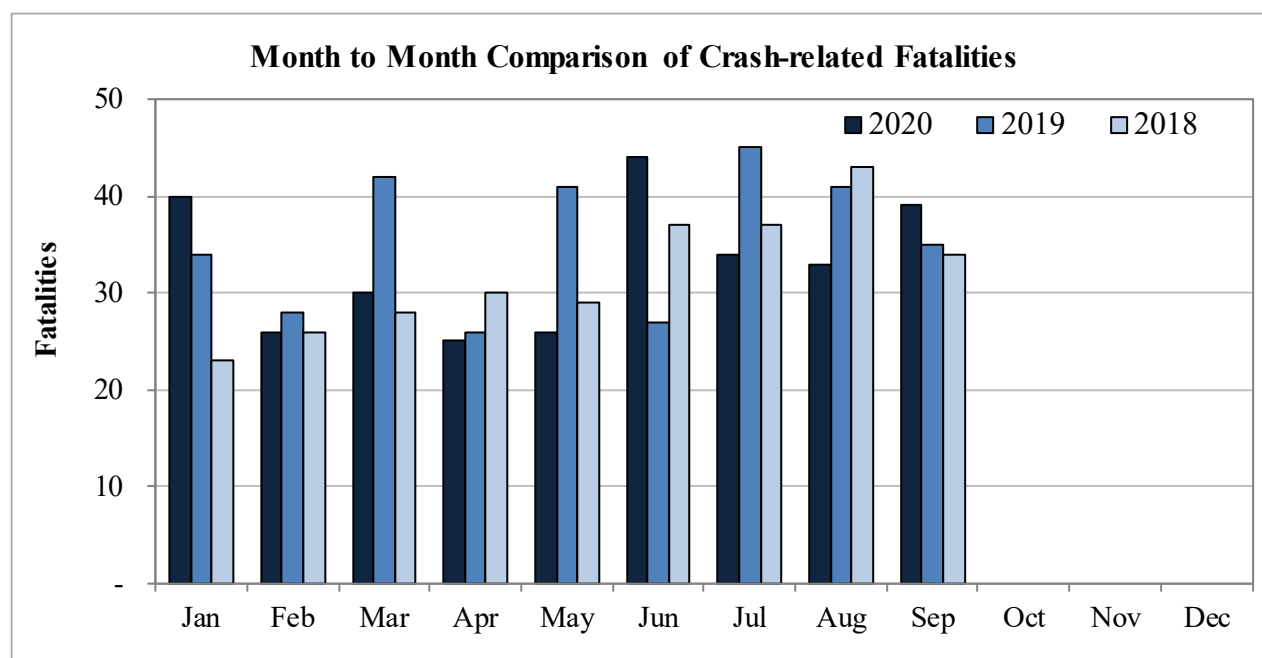


New Mexico Monthly Traffic Fatality Report, 2020

Produced for the New Mexico Department of Transportation, Traffic Safety Division, Traffic Records Bureau,
Under Contract No. 6093 by UNM Geospatial and Population Studies, Traffic Research Unit (TRU)

Fatalities by Month 2020, 2019, and 2018, Year to Date			
Month	2020	2019	2018
January	40	34	23
February	26	28	26
March	30	42	28
April	25	26	30
May	26	41	29
June	44	27	37
July	34	45	37
August	33	41	43
September	39	35	34
October	-	-	-
November	-	-	-
December	-	-	-
Total	297	319	287



Fatalities by Vehicle Type, 2020 to Date										
Month in 2020	Cars	Pickup Trucks	Semi Trucks, Buses	Vans, SUVs, Utility Vehicles	ATV (4W)	Motorcyclists	Pedestrians	Pedalcyclists	Vehicle Type Unknown or Other	Total Fatalities
January	11	10	-	8	-	-	11	-	-	40
February	15	2	-	1	-	3	4	1	-	26
March	10	6	-	4	-	-	10	-	-	30
April	4	1	1	4	-	4	10	1	-	25
May	9	2	-	6	-	9	-	-	-	26
June	14	7	2	6	1	6	7	1	-	44
July	8	7	-	6	3	4	3	3	-	34
August	14	4	1	6	1	3	3	1	-	33
September	5	6	1	4	3	12	7	1	-	39
October	-	-	-	-	-	-	-	-	-	-
November	-	-	-	-	-	-	-	-	-	-
December	-	-	-	-	-	-	-	-	-	-
Total	90	45	5	45	8	41	55	8	-	297

Fatalities by Alcohol Involvement ¹ , 2020 to Date				
Month in 2020	Alcohol-involved ¹	Not Alcohol-involved	Alcohol Unknown	Total Fatalities
January	12	28	-	40
February	7	19	-	26
March	8	22	-	30
April	5	20	-	25
May	12	14	-	26
June	9	35	-	44
July	7	27	-	34
August	6	27	-	33
September	2	37	-	39
October	-	-	-	-
November	-	-	-	-
December	-	-	-	-
Total	68	229	-	297

¹ All fatalities in alcohol-involved crashes.

Alcohol-involved ¹ Fatalities			
Month	2020	2019	2018
January	12	17	10
February	7	9	10
March	8	13	10
April	5	8	15
May	12	19	11
June	9	10	16
July	7	21	17
August	6	20	10
September	2	14	12
October	-	-	-
November	-	-	-
December	-	-	-
Total	68	131	111

¹ All fatalities in alcohol-involved crashes.

Fatalities Under 21, 2020 to Date	
Age	Fatalities
1	-
2	-
3	-
4	1
5	1
6	-
7	-
8	-
9	-
10	1
11	-
12	3
13	-
14	1
15	1
16	7
17	3
18	11
19	4
20	1
Total	34

Month in 2020	Total Fatalities, to Date	Alcohol-involved ¹ Fatalities, 2020 to Date			
		Motorcyclist Fatalities	Percent Motorcyclist Fatalities	Pedestrian Fatalities	Percent Pedestrian Fatalities
January	40	-	0.0%	5	12.5%
February	26	-	0.0%	3	11.5%
March	30	-	0.0%	1	3.3%
April	25	-	0.0%	1	4.0%
May	26	3	11.5%	-	0.0%
June	44	-	0.0%	-	0.0%
July	34	2	5.9%	-	0.0%
August	33	1	3.0%	-	0.0%
September	39	-	0.0%	-	0.0%
October	-	-	-	-	-
November	-	-	-	-	-
December	-	-	-	-	-
Total	297	6	2.0%	10	3.4%

¹ All fatalities in alcohol-involved crashes.

Alcohol-involved ¹ Fatalities, 2020 to Date		
Alcohol-involved	68	23%
Not Alcohol-involved	229	77%
Alcohol Unknown	-	-
Total	297	100%

¹ All fatalities in alcohol-involved crashes.

Motorcyclist/4W Helmet Usage, 2020 to Date	
Helmet Usage	Fatalities
Yes	13
No	36
Unknown	-
Total	49

Fatalities by Vehicle ¹ Occupant Seat Belt Usage, 2020 to Date				
Restraint	Yes	No	Unknown	Total
Seat Belt	61	119	-	180

¹ Total vehicle occupant fatalities. Excludes motorcyclist, 4W/ATV, semi truck, pedestrian and pedalcyclist fatalities.

Senior (65+) Fatalities, Year to Date	
Year	Fatalities
2020	39
2019	46
2018	45

Fatalities by Residency and Location, 2020 to Date				
Location	New Mexico Resident	Non-Resident	Unknown Residency	Total
Rural	98	42	-	140
Urban	147	6	4	157
Unknown	-	-	-	-
Total	245	48	4	297

Month to Month Comparison of Fatalities by Alcohol Involvement, Year to Date												
Month	2020 Fatalities				2019 Fatalities				2018 Fatalities			
	Alcohol-involved ¹			Total	Alcohol-involved ¹			Total	Alcohol-involved ¹			Total
	Yes	No	Unk		Yes	No	Unk		Yes	No	Unk	
January	12	28	-	40	17	17	-	34	10	13	-	23
February	7	19	-	26	9	19	-	28	10	16	-	26
March	8	22	-	30	13	29	-	42	10	18	-	28
April	5	20	-	25	8	18	-	26	15	15	-	30
May	12	14	-	26	19	22	-	41	11	18	-	29
June	9	35	-	44	10	17	-	27	16	21	-	37
July	7	27	-	34	21	24	-	45	17	20	-	37
August	6	27	-	33	20	21	-	41	10	33	-	43
September	2	37	-	39	14	21	-	35	12	22	-	34
October	-	-	-	-	-	-	-	-	-	-	-	-
November	-	-	-	-	-	-	-	-	-	-	-	-
December	-	-	-	-	-	-	-	-	-	-	-	-
Total	68	229	-	297	131	188	-	319	111	176	-	287

¹ Identifies whether the fatality resulted from an alcohol-involved crash.

Month to Month Comparison of Fatalities by Seat Belt Usage, Year to Date												
Month	2020 Fatalities				2019 Fatalities				2018 Fatalities			
	Seat Belt ¹			Total ²	Seat Belt ¹			Total ²	Seat Belt ¹			Total ²
	Yes	No	Unk		Yes	No	Unk		Yes	No	Unk	
January	11	18	-	29	8	8	-	16	6	11	-	17
February	6	12	-	18	5	15	-	20	6	12	-	18
March	8	12	-	20	9	14	-	23	7	6	-	13
April	3	6	-	9	11	7	-	18	5	12	-	17
May	8	9	-	17	10	13	-	23	5	10	-	15
June	7	20	-	27	11	5	-	16	13	12	-	25
July	9	12	-	21	15	12	-	27	8	11	-	19
August	5	19	-	24	9	21	-	30	13	11	-	24
September	4	11	-	15	10	12	-	22	8	11	-	19
October	-	-	-	-	-	-	-	-	-	-	-	-
November	-	-	-	-	-	-	-	-	-	-	-	-
December	-	-	-	-	-	-	-	-	-	-	-	-
Total	61	119	-	180	88	107	-	195	71	96	-	167

¹ Identifies whether a vehicle occupant was belted (Yes), unbelted (No), or belt usage was not reported (Unk).

² Total vehicle occupant fatalities. Excludes motorcyclist, 4W/ATV, semi truck, pedestrian and pedalcyclist fatalities.

Fatalities by County and Month, 2020 to Date														
County	Jan.	Feb.	Mar.	Apr.	May	Jun.	Jul.	Aug.	Sep.	Oct.	Nov.	Dec.	2020 Total, to Date	2019 Total, to Date
Bernalillo	10	8	6	12	8	12	14	11	8	-	-	-	89	74
Catron	-	-	-	-	-	-	-	-	-	-	-	-	-	-
Chaves	1	1	2	-	-	1	-	1	1	-	-	-	7	5
Cibola	2	1	3	-	1	3	-	-	1	-	-	-	11	12
Colfax	-	-	-	2	-	-	-	-	-	-	-	-	2	5
Curry	-	-	-	-	-	2	2	-	2	-	-	-	6	5
De Baca	-	-	-	-	-	-	-	-	-	-	-	-	-	-
Doña Ana	1	4	5	1	3	-	1	1	3	-	-	-	19	25
Eddy	3	2	1	1	-	-	-	1	2	-	-	-	10	13
Grant	2	-	1	-	1	2	1	-	1	-	-	-	8	2
Guadalupe	-	-	-	-	-	1	-	-	1	-	-	-	2	8
Harding	-	-	-	-	-	-	-	-	-	-	-	-	-	-
Hidalgo	-	-	-	-	-	-	-	1	-	-	-	-	1	8
Lea	2	1	2	1	-	-	-	3	3	-	-	-	12	20
Lincoln	-	-	-	-	1	-	1	-	1	-	-	-	3	4
Los Alamos	-	-	-	-	-	-	-	-	-	-	-	-	-	-
Luna	-	-	1	2	-	1	2	-	-	-	-	-	6	10
McKinley	2	2	1	-	4	3	1	-	3	-	-	-	16	25
Mora	1	-	-	-	-	-	-	-	-	-	-	-	1	3
Otero	-	-	-	1	-	1	1	-	1	-	-	-	4	8
Quay	-	-	-	-	-	-	-	-	-	-	-	-	-	1
Rio Arriba	-	-	-	-	2	5	2	4	1	-	-	-	14	10
Roosevelt	-	-	-	-	-	-	-	-	-	-	-	-	-	3
San Juan	2	2	3	2	1	3	2	2	2	-	-	-	19	22
San Miguel	2	1	2	-	1	1	-	1	-	-	-	-	8	2
Sandoval	3	-	-	-	1	1	-	1	1	-	-	-	7	12
Santa Fe	6	3	2	1	-	2	4	3	4	-	-	-	25	13
Sierra	-	-	-	-	-	-	1	-	-	-	-	-	1	1
Socorro	2	-	-	-	-	2	-	2	-	-	-	-	6	6
Taos	-	-	1	1	1	4	1	1	1	-	-	-	10	5
Torrance	-	1	-	-	-	-	1	1	1	-	-	-	4	8
Union	1	-	-	-	-	-	-	-	-	-	-	-	1	1
Valencia	-	-	-	1	2	-	-	-	2	-	-	-	5	8
Total	40	26	30	25	26	44	34	33	39	-	-	-	297	319

Fatalities by County Relating to Alcohol, Belt Use, and Under 21 BAC, 2020 to Date							
County	Alcohol-involved Fatalities ¹		Unbelted Fatalities		Under 21 (15-20) with a BAC ²		Total Fatalities
	Count	Percent ³	Count	Percent ³	Count	Percent ³	
Bernalillo	23	25.8%	35	39.3%	2	2.2%	89
Catron	-	-	-	-	-	-	-
Chaves	1	14.3%	1	14.3%	-	0.0%	7
Cibola	1	9.1%	4	36.4%	-	0.0%	11
Colfax	1	50.0%	1	50.0%	-	0.0%	2
Curry	-	0.0%	3	50.0%	-	0.0%	6
De Baca	-	-	-	-	-	-	-
Doña Ana	5	26.3%	7	36.8%	-	0.0%	19
Eddy	-	0.0%	6	60.0%	-	0.0%	10
Grant	-	0.0%	3	37.5%	-	0.0%	8
Guadalupe	-	0.0%	1	50.0%	-	0.0%	2
Harding	-	-	-	-	-	-	-
Hidalgo	-	0.0%	-	0.0%	-	0.0%	1
Lea	-	0.0%	5	41.7%	-	0.0%	12
Lincoln	1	33.3%	2	66.7%	-	0.0%	3
Los Alamos	-	-	-	-	-	-	-
Luna	1	16.7%	3	50.0%	-	0.0%	6
McKinley	8	50.0%	9	56.3%	1	6.3%	16
Mora	-	0.0%	1	100.0%	-	0.0%	1
Otero	2	50.0%	-	0.0%	-	0.0%	4
Quay	-	-	-	-	-	-	-
Rio Arriba	1	7.1%	7	50.0%	-	0.0%	14
Roosevelt	-	-	-	-	-	-	-
San Juan	7	36.8%	3	15.8%	-	0.0%	19
San Miguel	2	25.0%	4	50.0%	-	0.0%	8
Sandoval	1	14.3%	2	28.6%	1	14.3%	7
Santa Fe	7	28.0%	8	32.0%	1	4.0%	25
Sierra	-	0.0%	1	100.0%	-	0.0%	1
Socorro	-	0.0%	3	50.0%	-	0.0%	6
Taos	6	60.0%	5	50.0%	-	0.0%	10
Torrance	-	0.0%	2	50.0%	-	0.0%	4
Union	1	100.0%	1	100.0%	1	100.0%	1
Valencia	-	0.0%	2	40.0%	-	0.0%	5
Total	68	22.9%	119	40.1%	6	2.0%	297

¹ All fatalities in alcohol-involved crashes.

² Fatalities under 21 with a reported BAC (Blood Alcohol Content) above zero.

³ Percentage based on total fatalities in the county.

Fatalities by Maintenance District and Month, 2020 to Date													
District	Jan.	Feb.	Mar.	Apr.	May	Jun.	Jul.	Aug.	Sep.	Oct.	Nov.	Dec.	Total
District 1	5	4	7	3	4	5	5	4	4	-	-	-	41
District 2	6	4	5	3	1	4	4	5	10	-	-	-	42
District 3	13	8	6	13	11	13	14	11	11	-	-	-	100
District 4	4	1	2	2	1	2	-	1	1	-	-	-	14
District 5	8	6	6	4	4	14	10	11	9	-	-	-	72
District 6	4	3	4	-	5	6	1	1	4	-	-	-	28
Total	40	26	30	25	26	44	34	33	39	-	-	-	297

Fatalities by Maintenance District Relating to Alcohol, Belt Use, and Under 21 BAC, 2020 to Date							
District	Alcohol-involved Fatalities ¹		Unbelted Fatalities		Under 21 (15-20) Fatalities with a BAC ²		Total Fatalities
	Count	Percent ³	Count	Percent ³	Count	Percent ³	
District 1	6	14.6%	17	41.5%	-	0.0%	41
District 2	4	9.5%	17	40.5%	-	0.0%	42
District 3	24	24.0%	39	39.0%	3	3.0%	100
District 4	4	28.6%	8	57.1%	1	7.1%	14
District 5	21	29.2%	25	34.7%	1	1.4%	72
District 6	9	32.1%	13	46.4%	1	3.6%	28
Total	68	22.9%	119	40.1%	6	2.0%	297

¹ All fatalities in alcohol-involved crashes.

² Fatalities under 21 with a reported BAC (Blood Alcohol Content) above zero.

³ Percentage based on total fatalities in the district