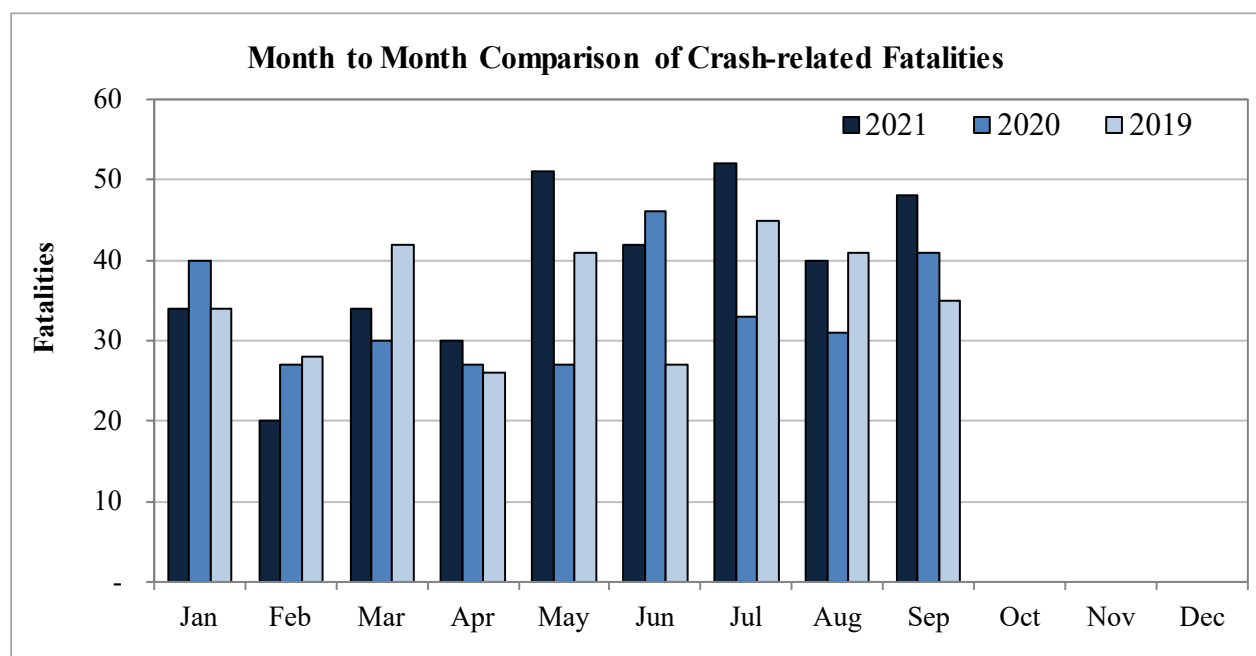


New Mexico Monthly Traffic Fatality Report, 2021

Produced for the New Mexico Department of Transportation, Traffic Safety Division, Traffic Records Bureau,
Under Contract No. 6093 by UNM Geospatial and Population Studies, Traffic Research Unit (TRU)

Fatalities by Month 2021, 2020, and 2019, 2021 to Date			
Month	2021	2020	2019
January	34	40	34
February	20	27	28
March	34	30	42
April	30	27	26
May	51	27	41
June	42	46	27
July	52	33	45
August	40	31	41
September	48	41	35
October	-	-	-
November	-	-	-
December	-	-	-
Total	351	302	319



Fatalities by Vehicle Type, 2021 to Date										
Month in 2021	Cars	Pickup Trucks	Semi Trucks, Buses	Vans, SUVs, Utility Vehicles	ATV (4W)	Motorcyclists	Pedestrians	Pedalcyclists	Vehicle Type Unknown or Other	Total Fatalities
January	9	7	1	6	-	1	10	-	-	34
February	4	5	2	2	-	1	5	1	-	20
March	8	11	-	3	-	6	5	1	-	34
April	13	-	-	8	-	5	4	-	-	30
May	16	10	1	9	1	5	9	-	-	51
June	11	7	4	6	3	6	5	-	-	42
July	16	8	2	9	2	5	9	-	1	52
August	11	4	1	8	-	5	10	1	-	40
September	13	5	3	11	-	6	10	-	-	48
October	-	-	-	-	-	-	-	-	-	-
November	-	-	-	-	-	-	-	-	-	-
December	-	-	-	-	-	-	-	-	-	-
Total	101	57	14	62	6	40	67	3	1	351

Fatalities by Alcohol Involvement ¹ , 2021 to Date				
Month in 2021	Alcohol-involved ¹	Not Alcohol-involved	Alcohol Unknown	Total Fatalities
January	7	27	-	34
February	5	15	-	20
March	9	25	-	34
April	6	24	-	30
May	16	35	-	51
June	6	36	-	42
July	9	43	-	52
August	3	37	-	40
September	10	38	-	48
October	-	-	-	-
November	-	-	-	-
December	-	-	-	-
Total	71	280	-	351

¹ All fatalities in alcohol-involved crashes.

Alcohol-involved ¹ Fatalities, 2021 to Date			
Month	2021	2020	2019
January	7	16	17
February	5	9	9
March	9	15	14
April	6	7	8
May	16	15	19
June	6	15	10
July	9	10	21
August	3	13	20
September	10	17	14
October	-	-	-
November	-	-	-
December	-	-	-
Total	71	117	132

¹ All fatalities in alcohol-involved crashes.

Fatalities Under 21, 2021 to Date	
Age	Fatalities
1	3
2	1
3	1
4	1
5	1
6	1
7	1
8	-
9	-
10	-
11	3
12	1
13	1
14	1
15	3
16	1
17	8
18	10
19	6
20	3
Total	46

Month in 2021	Total Fatalities, to Date	Alcohol-involved ¹ Fatalities, 2021 to Date			
		Motorcyclist Fatalities	Percent Motorcyclist Fatalities	Pedestrian Fatalities	Percent Pedestrian Fatalities
January	34	1	2.9%	1	2.9%
February	20	-	0.0%	2	10.0%
March	34	1	2.9%	-	0.0%
April	30	-	0.0%	1	3.3%
May	51	1	2.0%	2	3.9%
June	42	1	2.4%	-	0.0%
July	52	-	0.0%	-	0.0%
August	40	-	0.0%	1	2.5%
September	48	1	2.1%	3	6.3%
October	-	-	-	-	-
November	-	-	-	-	-
December	-	-	-	-	-
Total	351	5	1.4%	10	2.8%

¹ All fatalities in alcohol-involved crashes.

Alcohol-involved ¹ Fatalities, 2021 to Date		
Alcohol-involved	71	20%
Not Alcohol-involved	280	80%
Alcohol Unknown	-	-
Total	351	100%

¹ All fatalities in alcohol-involved crashes.

Motorcyclist/4W Helmet Usage, 2021 to Date	
Helmet Usage	Fatalities
Yes	9
No	36
Unknown	1
Total	46

Fatalities by Vehicle ¹ Occupant Seat Belt Usage, 2021 to Date				
Restraint	Yes	No	Unknown	Total
Seat Belt	75	143	2	220

¹ Total vehicle occupant fatalities. Excludes motorcyclist, 4W/ATV, semi truck, pedestrian and pedalcyclist fatalities.

Senior (65+) Fatalities 2021 to Date	
Year	Fatalities
2021	41
2020	39
2019	46

Fatalities by Residency and Location, 2021 to Date				
Location	New Mexico Resident	Non-Resident	Unknown Residency	Total
Rural	100	58	-	158
Urban	167	23	3	193
Unknown	-	-	-	-
Total	267	81	3	351

Month to Month Comparison of Fatalities by Alcohol Involvement, 2021 to Date												
Month	2021 Fatalities				2020 Fatalities				2019 Fatalities			
	Alcohol-involved ¹			Total	Alcohol-involved ¹			Total	Alcohol-involved ¹			Total
	Yes	No	Unk		Yes	No	Unk		Yes	No	Unk	
January	7	27	-	34	16	24	-	40	17	17	-	34
February	5	15	-	20	9	18	-	27	9	19	-	28
March	9	25	-	34	15	15	-	30	14	28	-	42
April	6	24	-	30	7	20	-	27	8	18	-	26
May	16	35	-	51	15	12	-	27	19	22	-	41
June	6	36	-	42	15	31	-	46	10	17	-	27
July	9	43	-	52	10	23	-	33	21	24	-	45
August	3	37	-	40	13	18	-	31	20	21	-	41
September	10	38	-	48	17	24	-	41	14	21	-	35
October	-	-	-	-	-	-	-	-	-	-	-	-
November	-	-	-	-	-	-	-	-	-	-	-	-
December	-	-	-	-	-	-	-	-	-	-	-	-
Total	71	280	-	351	117	185	-	302	132	187	-	319

¹ Identifies whether the fatality resulted from an alcohol-involved crash.

Month to Month Comparison of Fatalities by Seat Belt Usage, 2021 to Date												
Month	2021 Fatalities				2020 Fatalities				2019 Fatalities			
	Seat Belt ¹			Total ²	Seat Belt ¹			Total ²	Seat Belt ¹			Total ²
	Yes	No	Unk		Yes	No	Unk		Yes	No	Unk	
January	9	13	-	22	13	16	-	29	8	8	-	16
February	2	9	-	11	6	13	-	19	5	15	-	20
March	7	15	-	22	8	12	-	20	9	14	-	23
April	12	9	-	21	3	8	-	11	11	7	-	18
May	10	24	1	35	7	11	-	18	10	13	-	23
June	11	13	-	24	10	19	-	29	11	5	-	16
July	8	24	1	33	9	13	-	22	15	12	-	27
August	6	17	-	23	5	18	-	23	9	21	-	30
September	10	19	-	29	5	11	-	16	10	12	-	22
October	-	-	-	-	-	-	-	-	-	-	-	-
November	-	-	-	-	-	-	-	-	-	-	-	-
December	-	-	-	-	-	-	-	-	-	-	-	-
Total	75	143	2	220	66	121	-	187	88	107	-	195

¹ Identifies whether a vehicle occupant was belted (Yes), unbelted (No), or belt usage was not reported (Unk).

² Total vehicle occupant fatalities. Excludes motorcyclist, 4W/ATV, semi truck, pedestrian and pedalcyclist fatalities.

Fatalities by County and Month, 2021 to Date														
County	Jan.	Feb.	Mar.	Apr.	May	Jun.	Jul.	Aug.	Sep.	Oct.	Nov.	Dec.	2021 Total, to Date	2020 Total, to Date
Bernalillo	8	5	8	8	15	14	11	13	17	-	-	-	99	84
Catron	-	-	-	-	-	-	-	-	-	-	-	-	-	-
Chaves	1	-	-	2	-	2	-	1	-	-	-	-	6	7
Cibola	1	-	-	1	-	1	2	5	-	-	-	-	10	12
Colfax	1	-	-	2	-	-	-	-	-	-	-	-	3	2
Curry	1	-	-	-	5	-	-	1	-	-	-	-	7	6
De Baca	-	-	-	-	-	-	-	-	-	-	-	-	-	-
Doña Ana	2	2	-	2	1	1	-	2	3	-	-	-	13	19
Eddy	1	1	1	2	1	1	1	1	-	-	-	-	9	10
Grant	-	1	1	-	2	-	-	1	4	-	-	-	9	8
Guadalupe	-	1	-	-	-	1	-	1	-	-	-	-	3	3
Harding	-	-	-	-	-	-	-	-	-	-	-	-	-	-
Hidalgo	-	1	-	-	-	-	-	-	2	-	-	-	3	2
Lea	3	-	1	-	2	1	2	1	3	-	-	-	13	10
Lincoln	-	-	2	-	-	1	-	-	1	-	-	-	4	3
Los Alamos	-	-	-	-	1	-	-	-	-	-	-	-	1	-
Luna	-	-	1	-	4	1	3	4	1	-	-	-	14	6
McKinley	3	2	2	-	-	6	8	-	4	-	-	-	25	19
Mora	-	1	-	-	-	-	1	1	-	-	-	-	3	1
Otero	-	-	1	1	3	1	-	2	-	-	-	-	8	5
Quay	-	-	-	-	2	-	-	-	2	-	-	-	4	-
Rio Arriba	2	-	-	-	3	-	1	-	-	-	-	-	6	14
Roosevelt	-	1	1	-	-	-	-	1	-	-	-	-	3	1
San Juan	3	1	3	2	3	5	7	1	3	-	-	-	28	18
San Miguel	-	-	-	-	1	-	-	-	-	-	-	-	1	7
Sandoval	3	1	3	1	1	4	2	1	-	-	-	-	16	9
Santa Fe	4	-	2	1	1	-	5	1	3	-	-	-	17	25
Sierra	-	1	2	1	1	1	1	-	1	-	-	-	8	1
Socorro	1	-	1	4	2	-	1	1	-	-	-	-	10	7
Taos	-	-	2	2	2	1	-	1	2	-	-	-	10	11
Torrance	-	-	2	-	-	1	2	1	1	-	-	-	7	4
Union	-	-	-	-	-	-	2	-	-	-	-	-	2	1
Valencia	-	2	1	1	1	-	3	-	1	-	-	-	9	7
Total	34	20	34	30	51	42	52	40	48	-	-	-	351	302

Fatalities by County Relating to Alcohol, Belt Use, and Under 21 BAC, 2021 to Date							
County	Alcohol-involved Fatalities ¹		Unbelted Fatalities		Under 21 (15-20) with a BAC ²		Total Fatalities
	Count	Percent ³	Count	Percent ³	Count	Percent ³	
Bernalillo	17	17.2%	25	25.3%	-	0.0%	99
Catron	-	-	-	-	-	-	-
Chaves	2	33.3%	3	50.0%	-	0.0%	6
Cibola	-	0.0%	1	10.0%	-	0.0%	10
Colfax	1	33.3%	-	0.0%	-	0.0%	3
Curry	1	14.3%	2	28.6%	1	14.3%	7
De Baca	-	-	-	-	-	-	-
Doña Ana	4	30.8%	8	61.5%	-	0.0%	13
Eddy	3	33.3%	6	66.7%	-	0.0%	9
Grant	1	11.1%	2	22.2%	-	0.0%	9
Guadalupe	-	0.0%	3	100.0%	-	0.0%	3
Harding	-	-	-	-	-	-	-
Hidalgo	-	0.0%	-	0.0%	-	0.0%	3
Lea	-	0.0%	6	46.2%	-	0.0%	13
Lincoln	2	50.0%	2	50.0%	-	0.0%	4
Los Alamos	-	0.0%	-	0.0%	-	0.0%	1
Luna	1	7.1%	9	64.3%	-	0.0%	14
McKinley	9	36.0%	12	48.0%	-	0.0%	25
Mora	1	33.3%	1	33.3%	-	0.0%	3
Otero	3	37.5%	5	62.5%	-	0.0%	8
Quay	3	75.0%	2	50.0%	-	0.0%	4
Rio Arriba	-	0.0%	2	33.3%	-	0.0%	6
Roosevelt	-	0.0%	2	66.7%	-	0.0%	3
San Juan	9	32.1%	15	53.6%	-	0.0%	28
San Miguel	-	0.0%	1	100.0%	-	0.0%	1
Sandoval	9	56.3%	7	43.8%	-	0.0%	16
Santa Fe	1	5.9%	7	41.2%	-	0.0%	17
Sierra	-	0.0%	5	62.5%	-	0.0%	8
Socorro	3	30.0%	3	30.0%	-	0.0%	10
Taos	1	10.0%	5	50.0%	-	0.0%	10
Torrance	-	0.0%	3	42.9%	-	0.0%	7
Union	-	0.0%	2	100.0%	-	0.0%	2
Valencia	-	0.0%	4	44.4%	-	0.0%	9
Total	71	20.2%	143	40.7%	1	0.3%	351

¹ All fatalities in alcohol-involved crashes.

² Fatalities under 21 with a reported BAC (Blood Alcohol Content) above zero.

³ Percentage based on total fatalities in the county.

Fatalities by Maintenance District and Month, 2021 to Date													
District	Jan.	Feb.	Mar.	Apr.	May	Jun.	Jul.	Aug.	Sep.	Oct.	Nov.	Dec.	Total
District 1	3	5	5	7	10	3	5	8	11	-	-	-	57
District 2	6	2	6	5	11	6	3	7	4	-	-	-	50
District 3	10	8	12	9	16	17	16	14	18	-	-	-	120
District 4	1	2	-	2	3	1	3	2	2	-	-	-	16
District 5	9	1	9	5	10	7	15	4	9	-	-	-	69
District 6	5	2	2	2	1	8	10	5	4	-	-	-	39
Total	34	20	34	30	51	42	52	40	48	-	-	-	351

Fatalities by Maintenance District Relating to Alcohol, Belt Use, and Under 21 BAC, 2021 to Date							
District	Alcohol-involved Fatalities ¹		Unbelted Fatalities		Under 21 (15-20) Fatalities with a BAC ²		Total Fatalities
	Count	Percent ³	Count	Percent ³	Count	Percent ³	
District 1	9	15.8%	27	47.4%	-	0.0%	57
District 2	11	22.0%	26	52.0%	1	2.0%	50
District 3	24	20.0%	34	28.3%	-	0.0%	120
District 4	5	31.3%	9	56.3%	-	0.0%	16
District 5	11	15.9%	32	46.4%	-	0.0%	69
District 6	11	28.2%	15	38.5%	-	0.0%	39
Total	71	20.2%	143	40.7%	1	0.3%	351

¹ All fatalities in alcohol-involved crashes.

² Fatalities under 21 with a reported BAC (Blood Alcohol Content) above zero.

³ Percentage based on total fatalities in the district