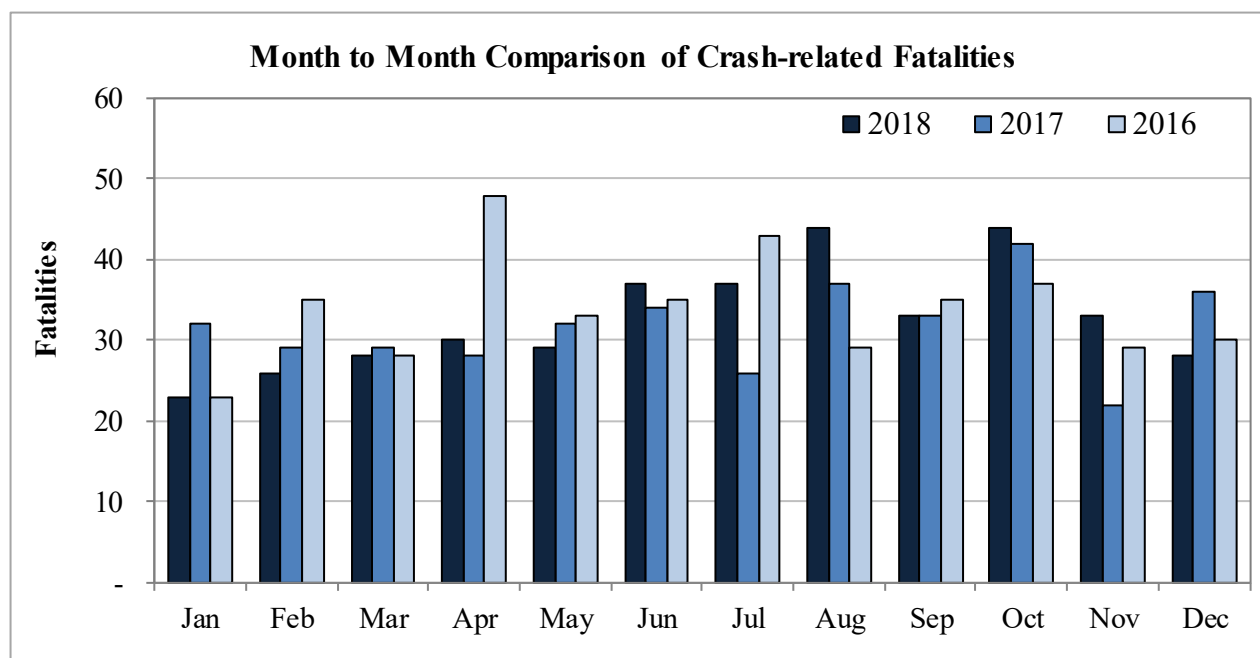


New Mexico Monthly Traffic Fatality Report, 2018

Produced for the New Mexico Department of Transportation, Traffic Safety Division, Traffic Records Bureau,
Under Contract No. 6093 by UNM Geospatial and Population Studies, Traffic Research Unit (TRU)

Fatalities by Month 2018, 2017, and 2016			
Month	2018	2017	2016
January	23	32	23
February	26	29	35
March	28	29	28
April	30	28	48
May	29	32	33
June	37	34	35
July	37	26	43
August	44	37	29
September	33	33	35
October	44	42	37
November	33	22	29
December	28	36	30
Total	392	380	405



Fatalities by Vehicle Type, 2018										
Month in 2018	Cars	Pickup Trucks	Semi Trucks, Buses	Vans, SUVs, Utility Vehicles	ATV (4W)	Motorcyclists	Pedestrians	Pedalcyclists	Vehicle Type Unknown or Other	Total Fatalities
January	8	6	-	3	-	1	5	-	-	23
February	9	4	-	5	-	-	8	-	-	26
March	7	5	-	1	-	5	10	-	-	28
April	7	7	-	3	-	6	7	-	-	30
May	6	2	-	7	-	7	7	-	-	29
June	10	7	1	8	-	3	6	2	-	37
July	10	5	3	4	1	6	6	2	-	37
August	8	10	9	7	-	6	3	1	-	44
September	8	5	1	5	-	5	9	-	-	33
October	14	6	1	6	1	3	10	3	-	44
November	8	4	-	8	-	3	7	3	-	33
December	8	3	3	6	-	2	6	-	-	28
Total	103	64	18	63	2	47	84	11	-	392

Fatalities by Alcohol Involvement ¹ , 2018				
Month in 2018	Alcohol-involved ¹	Not Alcohol-involved	Alcohol Unknown	Total Fatalities
January	10	13	-	23
February	10	16	-	26
March	10	18	-	28
April	15	15	-	30
May	11	18	-	29
June	16	21	-	37
July	17	20	-	37
August	10	34	-	44
September	12	21	-	33
October	15	29	-	44
November	13	20	-	33
December	13	15	-	28
Total	152	240	-	392

¹ All fatalities in alcohol-involved crashes.

Alcohol-involved ¹ Fatalities			
Month	2018	2017	2016
January	10	15	11
February	10	14	13
March	10	12	8
April	15	15	20
May	11	13	13
June	16	7	17
July	17	9	19
August	10	9	9
September	12	12	14
October	15	20	19
November	13	9	14
December	13	12	14
Total	152	147	171

¹ All fatalities in alcohol-involved crashes.

Fatalities Under 21, 2018	
Age	Fatalities
1	2
2	-
3	-
4	-
5	3
6	2
7	-
8	-
9	1
10	3
11	-
12	3
13	-
14	2
15	1
16	5
17	3
18	1
19	9
20	9
Total	44

Month in 2018	Total Fatalities, 2018	Alcohol-involved ¹ Fatalities, 2018			
		Motorcyclist Fatalities	Percent Motorcyclist Fatalities	Pedestrian Fatalities	Percent Pedestrian Fatalities
January	23	-	0.0%	3	13.0%
February	26	-	0.0%	2	7.7%
March	28	1	3.6%	5	17.9%
April	30	2	6.7%	6	20.0%
May	29	3	10.3%	3	10.3%
June	37	2	5.4%	6	16.2%
July	37	3	8.1%	4	10.8%
August	44	1	2.3%	1	2.3%
September	33	1	3.0%	4	12.1%
October	44	2	4.5%	4	9.1%
November	33	-	0.0%	3	9.1%
December	28	1	3.6%	5	17.9%
Total	392	16	4.1%	46	11.7%

¹ All fatalities in alcohol-involved crashes.

Alcohol-involved ¹ Fatalities, 2018		
Alcohol-involved	152	38.8%
Not Alcohol-involved	240	61.2%
Alcohol Unknown	0	0.0%
Total	392	100%

¹ All fatalities in alcohol-involved crashes.

Motorcyclist/4W Helmet Usage, 2018	
Helmet Usage	Fatalities
Yes	19
No	28
Unknown	2
Total	49

Fatalities by Vehicle ¹ Occupant Seat Belt Usage, 2018				
Restraint	Yes	No	Unknown	Total
Seat Belt	95	135	-	230

¹ Total vehicle occupant fatalities. Excludes motorcyclist, 4W/ATV, semi truck, pedestrian and pedalcyclist fatalities.

Senior (65+) Fatalities	
Year	Fatalities
2018	61
2017	57
2016	60

Fatalities by Residency and Location, 2018				
Location	New Mexico Resident	Non-Resident	Unknown Residency	Total
Rural	173	70	1	244
Urban	133	13	2	148
Unknown	-	-	-	-
Total	306	83	3	392

Month to Month Comparison of Fatalities by Alcohol Involvement, 2018, 2017 and 2016												
Month	2018 Fatalities				2017 Fatalities				2016 Fatalities			
	Alcohol-involved ¹			Total	Alcohol-involved ¹			Total	Alcohol-involved ¹			Total
	Yes	No	Unk		Yes	No	Unk		Yes	No	Unk	
January	10	13	-	23	15	17	-	32	11	12	-	23
February	10	16	-	26	14	15	-	29	13	22	-	35
March	10	18	-	28	12	17	-	29	8	20	-	28
April	15	15	-	30	15	13	-	28	20	28	-	48
May	11	18	-	29	13	19	-	32	13	20	-	33
June	16	21	-	37	7	27	-	34	17	18	-	35
July	17	20	-	37	9	17	-	26	19	24	-	43
August	10	34	-	44	9	28	-	37	9	20	-	29
September	12	21	-	33	12	21	-	33	14	21	-	35
October	15	29	-	44	20	22	-	42	19	18	-	37
November	13	20	-	33	9	13	-	22	14	15	-	29
December	13	15	-	28	12	24	-	36	14	16	-	30
Total	152	240	-	392	147	233	-	380	171	234	-	405

¹ Identifies whether the fatality resulted from an alcohol-involved crash.

Month to Month Comparison of Fatalities by Seat Belt Usage, 2018, 2017 and 2016												
Month	2018 Fatalities				2017 Fatalities				2016 Fatalities			
	Seat Belt ¹			Total ²	Seat Belt ¹			Total ²	Seat Belt ¹			Total ²
	Yes	No	Unk		Yes	No	Unk		Yes	No	Unk	
January	6	11	-	17	8	14	-	22	8	5	-	13
February	6	12	-	18	7	8	-	15	4	21	1	26
March	7	6	-	13	12	9	-	21	11	11	-	22
April	5	12	-	17	8	9	-	17	14	14	-	28
May	5	10	-	15	12	15	-	27	7	13	-	20
June	13	12	-	25	11	10	-	21	9	13	-	22
July	8	11	-	19	5	8	1	14	14	19	-	33
August	14	11	-	25	10	9	1	20	13	8	-	21
September	7	11	-	18	9	11	-	20	14	7	-	21
October	9	17	-	26	11	11	-	22	5	14	-	19
November	12	8	-	20	5	6	-	11	9	10	-	19
December	3	14	-	17	11	10	-	21	12	12	-	24
Total	95	135	-	230	109	120	2	231	120	147	1	268

¹ Identifies whether a vehicle occupant was belted (Yes), unbelted (No), or belt usage was not reported (Unk).

² Total vehicle occupant fatalities. Excludes motorcyclist, 4W/ATV, semi truck, pedestrian and pedalcyclist fatalities.

Fatalities by County and Month, 2018														
County	Jan.	Feb.	Mar.	Apr.	May	Jun.	Jul.	Aug.	Sep.	Oct.	Nov.	Dec.	2018 Total	2017 Total
Bernalillo	4	6	8	6	7	13	10	7	6	10	10	7	94	90
Catron	1	-	-	-	1	-	2	-	1	1	-	-	6	1
Chaves	-	-	-	2	2	1	-	1	4	2	2	1	15	6
Cibola	-	-	-	-	-	1	-	2	2	1	-	-	6	13
Colfax	-	-	1	-	-	2	-	-	1	-	1	-	5	4
Curry	-	1	2	-	-	-	-	2	-	-	1	1	7	4
De Baca	-	-	-	-	-	-	-	-	-	-	1	-	1	-
Doña Ana	1	1	2	-	2	-	2	1	2	1	1	2	15	29
Eddy	1	2	1	1	2	1	-	3	2	-	3	1	17	17
Grant	-	-	-	-	-	-	-	-	-	-	-	1	1	10
Guadalupe	-	-	-	-	-	-	-	1	-	-	1	3	5	9
Harding	-	-	-	-	-	-	-	-	-	-	-	-	-	-
Hidalgo	-	-	-	-	-	-	1	-	-	-	-	-	1	12
Lea	5	-	3	4	1	2	3	-	3	4	3	-	28	16
Lincoln	-	-	-	-	-	-	1	1	-	2	-	-	4	6
Los Alamos	-	-	-	-	-	-	-	-	-	-	-	-	-	-
Luna	1	-	-	-	-	-	-	1	-	3	1	-	6	2
McKinley	1	2	3	6	2	5	4	9	1	4	1	3	41	30
Mora	-	-	-	-	-	-	-	-	-	-	1	-	1	2
Otero	-	2	-	1	1	1	-	1	2	-	-	-	8	6
Quay	-	-	-	-	-	-	-	-	-	-	-	-	-	2
Rio Arriba	1	-	1	1	1	3	2	2	2	-	-	1	14	8
Roosevelt	-	-	1	-	-	-	-	1	-	-	-	-	2	6
San Juan	3	4	-	2	5	-	4	4	-	5	3	3	33	35
San Miguel	2	-	1	-	1	1	-	-	-	1	-	-	6	3
Sandoval	1	2	3	2	1	1	4	2	-	6	1	1	24	17
Santa Fe	2	2	1	2	1	3	1	1	1	-	1	3	18	16
Sierra	-	-	-	1	-	-	-	-	-	-	-	-	1	7
Socorro	-	-	-	-	1	-	-	-	-	-	1	-	2	2
Taos	-	1	-	1	1	1	-	-	2	1	1	1	9	9
Torrance	-	2	-	-	-	-	2	5	3	2	-	-	14	5
Union	-	-	-	-	-	-	-	-	1	-	-	-	1	1
Valencia	-	1	1	1	-	2	1	-	-	1	-	-	7	12
Total	23	26	28	30	29	37	37	44	33	44	33	28	392	380

Fatalities by County Relating to Alcohol, Belt Use, and Under 21 BAC, 2018							
County	Alcohol-involved Fatalities ¹		Unbelted Fatalities		Under 21 (15-20) with a BAC ²		Total Fatalities
	Count	Percent ³	Count	Percent ³	Count	Percent ³	
Bernalillo	40	42.6%	17	18.1%	1	1.1%	94
Catron	5	83.3%	3	50.0%	-	0.0%	6
Chaves	4	26.7%	7	46.7%	-	0.0%	15
Cibola	1	16.7%	1	16.7%	-	0.0%	6
Colfax	4	80.0%	3	60.0%	-	0.0%	5
Curry	1	14.3%	2	28.6%	-	0.0%	7
De Baca	-	0.0%	-	0.0%	-	0.0%	1
Doña Ana	4	26.7%	5	33.3%	1	6.7%	15
Eddy	2	11.8%	7	41.2%	-	0.0%	17
Grant	1	100.0%	1	100.0%	-	0.0%	1
Guadalupe	-	0.0%	1	20.0%	-	0.0%	5
Harding	-	-	-	-	-	-	-
Hidalgo	-	0.0%	-	0.0%	-	0.0%	1
Lea	11	39.3%	10	35.7%	3	10.7%	28
Lincoln	1	25.0%	2	50.0%	-	0.0%	4
Los Alamos	-	-	-	-	-	-	-
Luna	-	0.0%	2	33.3%	-	0.0%	6
McKinley	15	36.6%	16	39.0%	-	0.0%	41
Mora	-	0.0%	-	0.0%	-	0.0%	1
Otero	1	12.5%	4	50.0%	-	0.0%	8
Quay	-	-	-	-	-	-	-
Rio Arriba	7	50.0%	11	78.6%	-	0.0%	14
Roosevelt	1	50.0%	-	0.0%	-	0.0%	2
San Juan	21	63.6%	19	57.6%	3	0.0%	33
San Miguel	2	33.3%	3	50.0%	1	0.0%	6
Sandoval	11	45.8%	10	41.7%	-	0.0%	24
Santa Fe	7	38.9%	2	11.1%	-	0.0%	18
Sierra	1	100.0%	-	0.0%	-	0.0%	1
Socorro	-	0.0%	-	0.0%	-	0.0%	2
Taos	6	66.7%	4	44.4%	-	0.0%	9
Torrance	3	21.4%	3	21.4%	-	0.0%	14
Union	1	100.0%	-	0.0%	-	0.0%	1
Valencia	2	28.6%	2	28.6%	-	0.0%	7
Total	152	38.8%	135	34.4%	9	2.3%	392

¹ All fatalities in alcohol-involved crashes.

² Fatalities under 21 with a reported BAC (Blood Alcohol Content) above zero.

³ Percentage based on total fatalities in the county.

Fatalities by Maintenance District and Month, 2018													
District	Jan.	Feb.	Mar.	Apr.	May	Jun.	Jul.	Aug.	Sep.	Oct.	Nov.	Dec.	Total
District 1	2	1	2	1	3	-	3	2	2	4	3	3	26
District 2	6	5	7	8	6	5	4	9	11	8	10	3	82
District 3	5	7	11	9	8	16	15	9	6	16	11	7	120
District 4	2	-	2	-	1	3	-	1	2	1	3	3	18
District 5	6	8	2	6	8	7	9	12	8	8	4	6	84
District 6	2	5	4	6	3	6	6	11	4	7	2	6	62
Total	23	26	28	30	29	37	37	44	33	44	33	28	392

Fatalities by Maintenance District Relating to Alcohol, Belt Use, and Under 21 BAC, 2018							
District	Alcohol-involved Fatalities ¹		Unbelted Fatalities		Under 21 (15-20) Fatalities with a BAC ²		Total Fatalities
	Count	Percent ³	Count	Percent ³	Count	Percent ³	
District 1	6	23.1%	8	30.8%	1	3.8%	26
District 2	21	25.6%	32	39.0%	3	3.7%	82
District 3	51	42.5%	25	20.8%	1	0.8%	120
District 4	7	38.9%	7	38.9%	1	5.6%	18
District 5	41	48.8%	37	44.0%	3	3.6%	84
District 6	26	41.9%	26	41.9%	-	0.0%	62
Total	152	38.8%	135	34.4%	9	2.3%	392

¹ All fatalities in alcohol-involved crashes.

² Fatalities under 21 with a reported BAC (Blood Alcohol Content) above zero.

³ Percentage based on total fatalities in the district