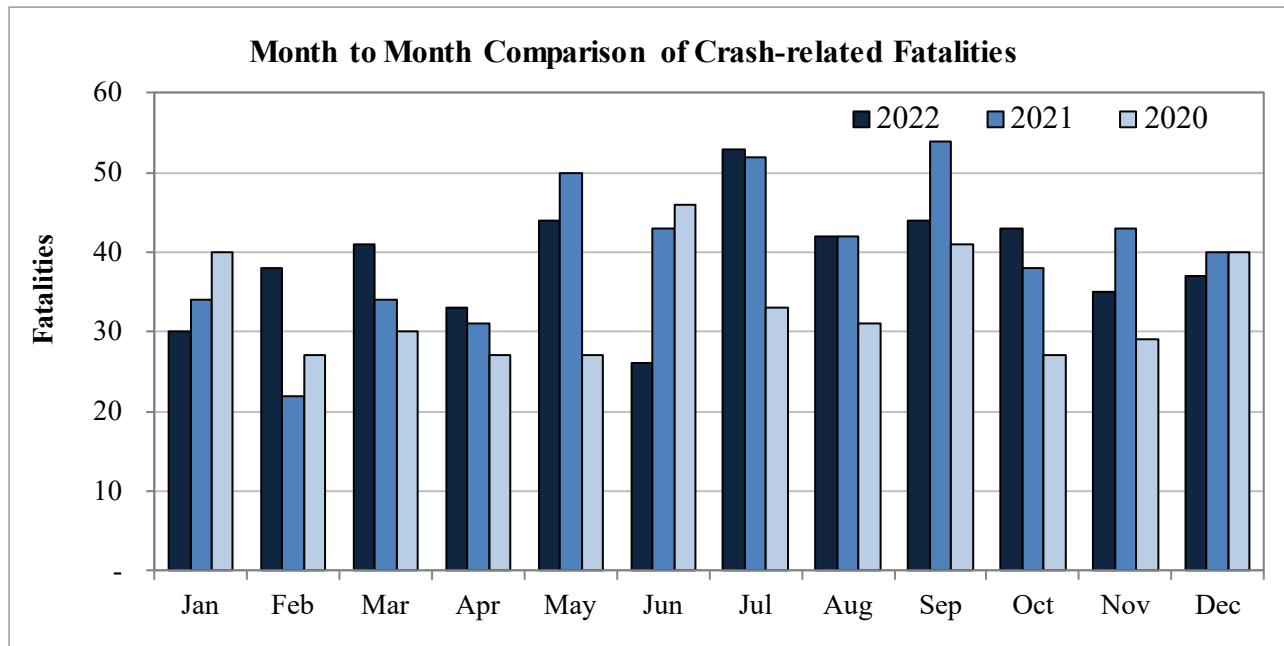


## New Mexico Monthly Traffic Fatality Report, 2022

Produced for the New Mexico Department of Transportation, Traffic Safety Division, Traffic Records Bureau,  
Under Contract No. 6380 by UNM Geospatial and Population Studies, Traffic Research Unit (TRU)

Fatalities by Month 2022, 2021, 2020			
Month	2022	2021	2020
January	30	34	40
February	38	22	27
March	41	34	30
April	33	31	27
May	44	50	27
June	26	43	46
July	53	52	33
August	42	42	31
September	44	54	41
October	43	38	27
November	35	43	29
December	37	40	40
<b>Total</b>	<b>466</b>	<b>483</b>	<b>398</b>



Fatalities by Vehicle Type, 2022										
Month in 2022	Cars	Pickup Trucks	Semi Trucks, Buses	Vans, SUVs, Utility Vehicles	ATV (4W)	Motorcyclists	Pedestrians	Pedalcyclists	Vehicle Type Unknown or Other	Total Fatalities
January	7	3	-	6	-	2	11	1	-	30
February	5	7	4	10	1	2	9	-	-	38
March	16	7	-	4	-	6	8	-	-	41
April	7	10	1	9	-	3	3	-	-	33
May	10	5	3	11	2	9	3	-	1	44
June	4	2	1	8	-	3	8	-	-	26
July	22	7	2	11	-	6	4	1	-	53
August	8	5	-	12	-	8	8	1	-	42
September	10	6	2	9	1	9	5	1	1	44
October	6	10	1	5	-	5	16	-	-	43
November	12	4	6	4	-	-	9	-	-	35
December	9	4	2	11	-	1	10	-	-	37
<b>Total</b>	<b>116</b>	<b>70</b>	<b>22</b>	<b>100</b>	<b>4</b>	<b>54</b>	<b>94</b>	<b>4</b>	<b>2</b>	<b>466</b>

Fatalities by Alcohol Involvement <sup>1</sup> , 2022				
Month in 2022	Alcohol-involved <sup>1</sup>	Not Alcohol-involved	Alcohol Unknown	Total Fatalities
January	12	18	-	30
February	16	22	-	38
March	20	21	-	41
April	13	20	-	33
May	15	29	-	44
June	9	17	-	26
July	16	37	-	53
August	17	25	-	42
September	14	30	-	44
October	17	26	-	43
November	9	26	-	35
December	18	19	-	37
<b>Total</b>	<b>176</b>	<b>290</b>	<b>-</b>	<b>466</b>

Alcohol-involved Fatalities <sup>1</sup> , 2022			
Month	2022	2021	2020
January	12	13	16
February	16	11	9
March	20	17	15
April	13	12	7
May	15	17	15
June	9	10	15
July	16	19	10
August	17	14	13
September	14	23	17
October	17	9	11
November	9	19	12
December	18	14	5
<b>Total</b>	<b>176</b>	<b>178</b>	<b>145</b>

<sup>1</sup> All fatalities in alcohol-involved crashes.

<sup>1</sup> All fatalities in alcohol-involved crashes.

Fatalities Under 21, 2022	
Age	Fatalities
1	2
2	-
3	-
4	1
5	1
6	2
7	-
8	-
9	1
10	1
11	-
12	-
13	-
14	-
15	2
16	5
17	6
18	13
19	12
20	9
<b>Total</b>	<b>55</b>

Month in 2022	Total Fatalities, 2022	Alcohol-involved Fatalities <sup>1</sup> , 2022			
		Motorcyclist Fatalities	Percent Motorcyclist Fatalities	Pedestrian Fatalities	Percent Pedestrian Fatalities
January	30	-	0.0%	6	20.0%
February	38	1	2.6%	5	13.2%
March	41	1	2.4%	6	14.6%
April	33	1	3.0%	2	6.1%
May	44	3	6.8%	2	4.5%
June	26	1	3.8%	1	3.8%
July	53	2	3.8%	-	0.0%
August	42	4	9.5%	3	7.1%
September	44	3	6.8%	1	2.3%
October	43	1	2.3%	8	18.6%
November	35	-	0.0%	2	5.7%
December	37	-	0.0%	4	10.8%
<b>Total</b>	<b>466</b>	<b>17</b>	<b>3.6%</b>	<b>40</b>	<b>8.6%</b>

<sup>1</sup> All fatalities in alcohol-involved crashes.

Alcohol-involved Fatalities <sup>1</sup> , 2022		
Alcohol-involved	176	38%
Not Alcohol-involved	290	62%
Alcohol Unknown	-	-
<b>Total</b>	<b>466</b>	<b>100%</b>

<sup>1</sup> All fatalities in alcohol-involved crashes.

Motorcyclist Helmet Usage <sup>1</sup> , 2022	
Helmet Usage	Fatalities
Yes	25
No	29
Unknown	-
<b>Total</b>	<b>54</b>

<sup>1</sup> Excludes 4W/ATV.

Fatalities by Vehicle <sup>1</sup> Occupant Seat Belt Usage, 2022				
Restraint	Yes	No	Unknown	Total
Seat Belt	106	180	-	286

<sup>1</sup> Total vehicle occupant fatalities. Excludes motorcyclist, 4W/ATV, semi truck, pedestrian and pedalcyclist fatalities.

Senior (65+) Fatalities 2022	
Year	Fatalities
2022	68
2021	60
2020	57

Fatalities by Residency and Location, 2022				
Location	New Mexico Resident	Non-Resident	Unknown Residency	Total
Rural	168	95	2	265
Urban	194	6	1	201
Unknown	-	-	-	-
<b>Total</b>	<b>362</b>	<b>101</b>	<b>3</b>	<b>466</b>

Month to Month Comparison of Fatalities by Alcohol Involvement, 2022												
Month	2022 Fatalities				2021 Fatalities				2020 Fatalities			
	Alcohol-involved <sup>1</sup>			Total	Alcohol-involved <sup>1</sup>			Total	Alcohol-involved <sup>1</sup>			Total
	Yes	No	Unk		Yes	No	Unk		Yes	No	Unk	
January	12	18	-	30	13	21	-	34	16	24	-	40
February	16	22	-	38	11	11	-	22	9	18	-	27
March	20	21	-	41	17	17	-	34	15	15	-	30
April	13	20	-	33	12	19	-	31	7	20	-	27
May	15	29	-	44	17	33	-	50	15	12	-	27
June	9	17	-	26	10	33	-	43	15	31	-	46
July	16	37	-	53	19	33	-	52	10	23	-	33
August	17	25	-	42	14	28	-	42	13	18	-	31
September	14	30	-	44	23	31	-	54	17	24	-	41
October	17	26	-	43	9	29	-	38	11	16	-	27
November	9	26	-	35	19	24	-	43	12	17	-	29
December	18	19	-	37	14	26	-	40	5	35	-	40
<b>Total</b>	<b>176</b>	<b>290</b>	<b>-</b>	<b>466</b>	<b>178</b>	<b>305</b>	<b>-</b>	<b>483</b>	<b>145</b>	<b>253</b>	<b>-</b>	<b>398</b>

<sup>1</sup> Identifies whether the fatality resulted from an alcohol-involved crash.

Month to Month Comparison of Fatalities by Seat Belt Usage, 2022												
Month	2022 Fatalities				2021 Fatalities				2020 Fatalities			
	Seat Belt <sup>1</sup>			Total <sup>2</sup>	Seat Belt <sup>1</sup>			Total <sup>2</sup>	Seat Belt <sup>1</sup>			Total <sup>2</sup>
	Yes	No	Unk		Yes	No	Unk		Yes	No	Unk	
January	4	12	-	16	10	13	-	23	13	16	-	29
February	9	13	-	22	2	10	-	12	6	13	-	19
March	12	15	-	27	8	14	-	22	8	12	-	20
April	11	15	-	26	12	9	-	21	3	8	-	11
May	5	21	-	26	12	21	-	33	7	11	-	18
June	7	7	-	14	11	14	-	25	10	19	-	29
July	14	26	-	40	10	23	-	33	9	13	-	22
August	6	19	-	25	4	18	-	22	5	18	-	23
September	10	15	-	25	10	20	-	30	5	11	-	16
October	8	13	-	21	11	12	-	23	7	6	-	13
November	11	9	-	20	5	14	-	19	6	9	-	15
December	9	15	-	24	8	16	-	24	6	23	-	29
<b>Total</b>	<b>106</b>	<b>180</b>	<b>-</b>	<b>286</b>	<b>103</b>	<b>184</b>	<b>-</b>	<b>287</b>	<b>85</b>	<b>159</b>	<b>-</b>	<b>244</b>

<sup>1</sup> Identifies whether a vehicle occupant was belted (Yes), unbelted (No), or belt usage was not reported (Unk).

<sup>2</sup> Total vehicle occupant fatalities. Excludes motorcyclist, 4W/ATV, semi truck, pedestrian and pedalcyclist fatalities.

Fatalities by County and Month, 2022														
County	Jan.	Feb.	Mar.	Apr.	May	Jun.	Jul.	Aug.	Sep.	Oct.	Nov.	Dec.	2022 Total	2021 Total
Bernalillo	6	8	13	8	11	9	10	11	14	7	5	7	109	143
Catron	-	-	1	-	-	-	-	-	-	-	1	2	4	-
Chaves	1	-	-	2	1	-	-	-	6	2	2	1	15	7
Cibola	2	-	2	-	1	1	4	4	-	1	1	-	16	23
Colfax	-	-	1	-	-	1	-	1	-	-	-	-	3	5
Curry	-	-	-	2	1	-	-	1	-	-	1	1	6	9
De Baca	-	-	-	-	-	-	-	-	-	-	-	-	-	1
Doña Ana	3	1	4	3	2	2	4	1	1	3	2	3	29	16
Eddy	-	2	1	2	3	1	4	1	3	1	-	-	18	14
Grant	-	1	-	-	-	-	1	1	-	-	-	-	3	10
Guadalupe	1	4	-	-	-	-	3	1	-	2	1	-	12	7
Harding	-	-	-	-	-	-	-	-	-	-	-	-	-	-
Hidalgo	1	-	-	-	-	-	1	-	-	-	-	-	2	3
Lea	3	-	2	3	2	-	1	3	2	2	2	1	21	14
Lincoln	-	-	1	-	1	-	-	-	-	-	-	-	2	3
Los Alamos	-	-	-	-	-	-	-	-	-	-	-	-	-	3
Luna	-	-	2	-	4	2	-	-	3	3	1	-	15	22
McKinley	1	5	4	3	5	1	2	2	1	5	1	4	34	32
Mora	1	-	-	-	-	-	3	-	-	1	4	1	10	4
Otero	-	-	2	-	1	1	-	-	1	2	3	1	11	15
Quay	-	2	-	-	2	-	1	2	-	1	3	-	11	8
Rio Arriba	3	-	-	-	-	1	5	2	-	2	-	1	14	6
Roosevelt	2	1	-	-	1	-	2	4	1	-	1	-	12	4
San Juan	1	2	3	1	1	2	1	2	2	2	1	1	19	34
San Miguel	-	-	1	-	-	1	-	1	-	2	1	1	7	2
Sandoval	1	4	1	1	2	-	3	-	3	2	2	2	21	19
Santa Fe	2	1	2	4	-	2	3	2	4	3	-	2	25	22
Sierra	-	-	-	-	2	-	-	-	-	-	-	-	2	9
Socorro	-	4	-	2	-	-	4	2	-	1	1	-	14	13
Taos	-	-	-	-	-	2	-	-	-	1	-	5	8	13
Torrance	-	-	-	1	2	-	-	1	3	-	1	1	9	9
Union	-	-	1	-	-	-	-	-	-	-	-	1	2	2
Valencia	2	3	-	1	2	-	1	-	-	-	1	2	12	11
<b>Total</b>	<b>30</b>	<b>38</b>	<b>41</b>	<b>33</b>	<b>44</b>	<b>26</b>	<b>53</b>	<b>42</b>	<b>44</b>	<b>43</b>	<b>35</b>	<b>37</b>	<b>466</b>	<b>483</b>

Fatalities by County Relating to Alcohol, Belt Use, and Under 21 BAC, 2022							
County	Alcohol-involved Fatalities <sup>1</sup>		Unbelted Fatalities		Under 21 (15-20) with a BAC <sup>2</sup>		Total Fatalities
	Count	Percent <sup>3</sup>	Count	Percent <sup>3</sup>	Count	Percent <sup>3</sup>	
Bernalillo	45	41.3%	35	32.1%	3	2.8%	109
Catron	4	100.0%	3	75.0%	-	0.0%	4
Chaves	6	40.0%	8	53.3%	-	0.0%	15
Cibola	7	43.8%	7	43.8%	1	6.3%	16
Colfax	-	0.0%	-	0.0%	-	0.0%	3
Curry	1	16.7%	3	50.0%	-	0.0%	6
De Baca	-	-	-	-	-	-	-
Doña Ana	10	34.5%	5	17.2%	-	0.0%	29
Eddy	3	16.7%	10	55.6%	-	0.0%	18
Grant	1	33.3%	-	0.0%	-	0.0%	3
Guadalupe	2	16.7%	4	33.3%	-	0.0%	12
Harding	-	-	-	-	-	-	-
Hidalgo	1	50.0%	1	50.0%	-	0.0%	2
Lea	5	23.8%	6	28.6%	-	0.0%	21
Lincoln	-	0.0%	-	0.0%	-	0.0%	2
Los Alamos	-	-	-	-	-	-	-
Luna	4	26.7%	6	40.0%	1	6.7%	15
McKinley	17	50.0%	12	35.3%	1	2.9%	34
Mora	4	40.0%	5	50.0%	-	0.0%	10
Otero	4	36.4%	8	72.7%	-	0.0%	11
Quay	2	18.2%	3	27.3%	-	0.0%	11
Rio Arriba	6	42.9%	8	57.1%	-	0.0%	14
Roosevelt	7	58.3%	7	58.3%	-	0.0%	12
San Juan	14	73.7%	4	21.1%	-	0.0%	19
San Miguel	1	14.3%	2	28.6%	-	0.0%	7
Sandoval	9	42.9%	14	66.7%	1	4.8%	21
Santa Fe	10	40.0%	6	24.0%	-	0.0%	25
Sierra	1	50.0%	1	50.0%	-	0.0%	2
Socorro	2	14.3%	7	50.0%	-	0.0%	14
Taos	5	62.5%	6	75.0%	-	0.0%	8
Torrance	1	11.1%	4	44.4%	-	0.0%	9
Union	1	50.0%	1	50.0%	-	0.0%	2
Valencia	3	25.0%	4	33.3%	-	0.0%	12
<b>Total</b>	<b>176</b>	<b>37.8%</b>	<b>180</b>	<b>38.6%</b>	<b>7</b>	<b>1.5%</b>	<b>466</b>

<sup>1</sup> All fatalities in alcohol-involved crashes.

<sup>2</sup> Fatalities under 21 with a reported BAC (Blood Alcohol Content) above zero.

<sup>3</sup> Percentage based on total fatalities in the county.

Fatalities by Maintenance District and Month, 2022													
District	Jan.	Feb.	Mar.	Apr.	May	Jun.	Jul.	Aug.	Sep.	Oct.	Nov.	Dec.	Total
District 1	4	6	6	5	8	4	10	4	4	7	4	3	65
District 2	6	3	6	9	10	2	7	9	13	7	9	4	85
District 3	9	15	14	9	15	9	14	11	16	8	7	11	138
District 4	2	6	3	-	2	2	7	5	-	6	9	3	45
District 5	6	3	5	6	3	7	9	7	9	8	2	10	75
District 6	3	5	7	4	6	2	6	6	2	7	4	6	58
<b>Total</b>	<b>30</b>	<b>38</b>	<b>41</b>	<b>33</b>	<b>44</b>	<b>26</b>	<b>53</b>	<b>42</b>	<b>44</b>	<b>43</b>	<b>35</b>	<b>37</b>	<b>466</b>

Fatalities by Maintenance District Relating to Alcohol, Belt Use, and Under 21 BAC, 2022							
District	Alcohol-involved Fatalities <sup>1</sup>		Unbelted Fatalities		Under 21 (15-20) Fatalities with a BAC <sup>2</sup>		Total Fatalities
	Count	Percent <sup>3</sup>	Count	Percent <sup>3</sup>	Count	Percent <sup>3</sup>	
District 1	19	29.2%	20	30.8%	1	1.5%	65
District 2	26	30.6%	42	49.4%	-	0.0%	85
District 3	54	39.1%	50	36.2%	4	2.9%	138
District 4	10	22.2%	15	33.3%	-	0.0%	45
District 5	36	48.0%	28	37.3%	-	0.0%	75
District 6	31	53.4%	25	43.1%	2	3.4%	58
<b>Total</b>	<b>176</b>	<b>37.8%</b>	<b>180</b>	<b>38.6%</b>	<b>7</b>	<b>1.5%</b>	<b>466</b>

<sup>1</sup> All fatalities in alcohol-involved crashes.

<sup>2</sup> Fatalities under 21 with a reported BAC (Blood Alcohol Content) above zero.

<sup>3</sup> Percentage based on total fatalities in the district

Motorcycle <sup>1</sup> Fatalities by County and Month, 2022														
County	Jan.	Feb.	Mar.	Apr.	May	Jun.	Jul.	Aug.	Sep.	Oct.	Nov.	Dec.	2022 Total	2021 Total
Bernalillo	-	1	2	2	3	2	1	1	6	2	1	-	21	27
Catron	-	-	1	-	-	-	-	-	-	-	-	-	1	-
Chaves	-	-	-	-	-	-	-	-	-	-	-	-	-	-
Cibola	-	-	-	-	-	-	-	-	-	-	-	-	-	3
Colfax	-	-	-	-	-	-	-	-	-	-	-	-	-	-
Curry	-	-	-	-	1	-	-	-	-	-	-	-	1	-
De Baca	-	-	-	-	-	-	-	-	-	-	-	-	-	-
Doña Ana	-	1	2	-	1	-	-	-	-	1	-	-	5	-
Eddy	-	-	-	-	1	-	-	-	-	-	-	-	1	2
Grant	-	-	-	-	-	-	-	1	-	-	-	-	1	-
Guadalupe	-	-	-	-	-	-	-	-	-	-	-	-	-	-
Harding	-	-	-	-	-	-	-	-	-	-	-	-	-	-
Hidalgo	-	-	-	-	-	-	-	-	-	-	-	-	-	-
Lea	-	-	-	-	-	-	1	1	1	-	-	-	3	-
Lincoln	-	-	1	-	-	-	-	-	-	-	-	-	1	1
Los Alamos	-	-	-	-	-	-	-	-	-	-	-	-	-	1
Luna	-	-	-	-	1	-	-	-	1	-	-	-	2	1
McKinley	-	-	-	-	-	-	-	1	-	-	-	-	1	1
Mora	-	-	-	-	-	-	-	-	-	-	-	-	-	-
Otero	-	-	-	-	-	-	-	-	-	1	-	-	1	3
Quay	-	-	-	-	-	-	1	-	-	-	-	-	1	2
Rio Arriba	1	-	-	-	-	-	-	-	-	-	-	-	1	1
Roosevelt	-	-	-	-	-	-	-	1	-	-	-	-	1	-
San Juan	-	-	-	-	-	1	1	-	-	-	-	-	2	3
San Miguel	-	-	-	-	-	-	-	1	-	-	-	-	1	-
Sandoval	1	-	-	-	1	-	-	-	-	-	-	-	2	2
Santa Fe	-	-	-	1	-	-	1	2	1	-	-	-	5	2
Sierra	-	-	-	-	1	-	-	-	-	-	-	-	1	1
Socorro	-	-	-	-	-	-	-	-	-	1	-	-	1	1
Taos	-	-	-	-	-	-	-	-	-	-	-	-	-	1
Torrance	-	-	-	-	-	-	-	-	-	-	-	-	-	1
Union	-	-	-	-	-	-	-	-	-	-	-	-	-	-
Valencia	-	-	-	-	-	-	1	-	-	-	-	-	1	2
<b>Total</b>	<b>2</b>	<b>2</b>	<b>6</b>	<b>3</b>	<b>9</b>	<b>3</b>	<b>6</b>	<b>8</b>	<b>9</b>	<b>5</b>	<b>1</b>	<b>-</b>	<b>54</b>	<b>55</b>

<sup>1</sup> The term motorcycle includes motorized scooters and mopeds, but excludes 4W/ATVs.



Motorcycle <sup>1</sup> Fatalities by County Relating to Alcohol, Helmet Use, and Age, 2022							
County	Alcohol-involved Fatalities <sup>2</sup>		Unhelmeted Fatalities		Fatalities Under Age 30 (Ages 15-29)		Total Fatalities
	Count	Percent <sup>3</sup>	Count	Percent <sup>3</sup>	Count	Percent <sup>3</sup>	
Bernalillo	5	23.8%	11	52.4%	1	4.8%	21
Catron	1	100.0%	1	100.0%	-	0.0%	1
Chaves	-	-	-	-	-	-	-
Cibola	-	-	-	-	-	-	-
Colfax	-	-	-	-	-	-	-
Curry	-	0.0%	-	0.0%	-	0.0%	1
De Baca	-	-	-	-	-	-	-
Doña Ana	1	20.0%	2	40.0%	-	0.0%	5
Eddy	-	0.0%	-	0.0%	-	0.0%	1
Grant	1	100.0%	1	100.0%	-	0.0%	1
Guadalupe	-	-	-	-	-	-	-
Harding	-	-	-	-	-	-	-
Hidalgo	-	-	-	-	-	-	-
Lea	2	66.7%	2	66.7%	1	33.3%	3
Lincoln	-	0.0%	1	100.0%	-	0.0%	1
Los Alamos	-	-	-	-	-	-	-
Luna	2	100.0%	1	50.0%	1	50.0%	2
McKinley	-	0.0%	-	0.0%	-	0.0%	1
Mora	-	-	-	-	-	-	-
Otero	1	100.0%	-	0.0%	-	0.0%	1
Quay	-	0.0%	1	100.0%	-	0.0%	1
Rio Arriba	-	0.0%	1	100.0%	-	0.0%	1
Roosevelt	1	100.0%	1	100.0%	1	100.0%	1
San Juan	1	50.0%	1	50.0%	-	0.0%	2
San Miguel	-	0.0%	1	100.0%	-	0.0%	1
Sandoval	-	0.0%	2	100.0%	-	0.0%	2
Santa Fe	1	20.0%	2	40.0%	1	20.0%	5
Sierra	-	0.0%	-	0.0%	-	0.0%	1
Socorro	-	0.0%	-	0.0%	-	0.0%	1
Taos	-	-	-	-	-	-	-
Torrance	-	-	-	-	-	-	-
Union	-	-	-	-	-	-	-
Valencia	1	100.0%	1	100.0%	1	100.0%	1
<b>Total</b>	<b>17</b>	<b>31.5%</b>	<b>29</b>	<b>53.7%</b>	<b>6</b>	<b>11.1%</b>	<b>54</b>

<sup>1</sup> The term motorcycle includes motorized scooters and mopeds, but excludes 4W/ATVs.

<sup>2</sup> All motorcycle fatalities in alcohol-involved crashes.

<sup>3</sup> Percentage based on total motorcycle fatalities in the county.