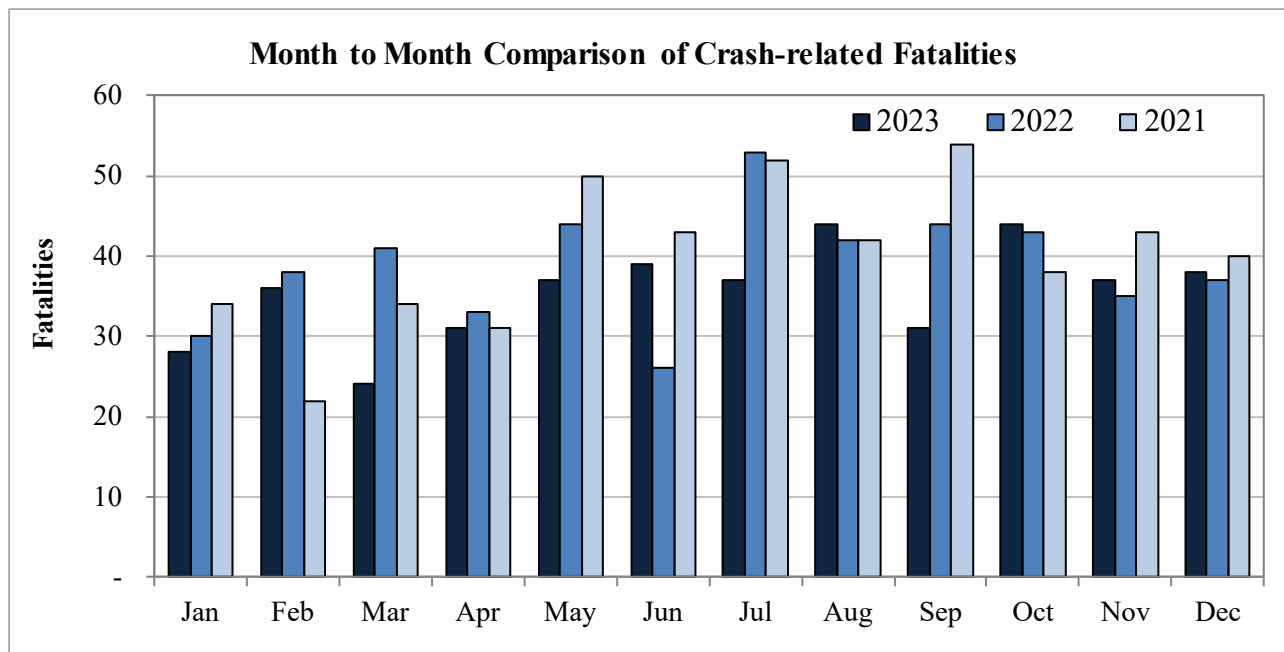


New Mexico Monthly Traffic Fatality Report, 2023

Produced for the New Mexico Department of Transportation, Traffic Safety Division, Traffic Records Bureau,
Under Contract No. 6380 by UNM Geospatial and Population Studies, Traffic Research Unit (TRU)

Fatalities by Month 2023, 2022, 2021 Year to Date			
Month	2023	2022	2021
January	28	30	34
February	36	38	22
March	24	41	34
April	31	33	31
May	37	44	50
June	39	26	43
July	37	53	52
August	44	42	42
September	31	44	54
October	44	43	38
November	37	35	43
December	38	37	40
Total	426	466	483



Fatalities by Vehicle Type, 2023 to Date										
Month in 2023	Cars	Pickup Trucks	Semi Trucks, Buses	Vans, SUVs, Utility Vehicles	ATV (4W)	Motorcyclists	Pedestrians	Pedalcyclists	Vehicle Type Unknown or Other	Total Fatalities
January	13	2	2	2	-	3	5	-	1	28
February	11	2	2	3	-	4	14	-	-	36
March	7	2	2	2	-	2	9	-	-	24
April	5	6	1	11	-	4	4	-	-	31
May	8	7	3	4	-	7	7	1	-	37
June	10	6	2	7	-	6	5	3	-	39
July	9	1	3	7	-	7	7	3	-	37
August	13	3	5	8	-	6	8	1	-	44
September	5	-	4	5	-	7	9	1	-	31
October	13	3	7	6	-	3	12	-	-	44
November	8	4	4	7	-	4	10	-	-	37
December	12	2	3	7	-	2	11	1	-	38
Total	114	38	38	69	-	55	101	10	1	426

Fatalities by Alcohol Involvement ¹ , 2023 to Date				
Month in 2023	Alcohol-involved ¹	Not Alcohol-involved	Alcohol Unknown	Total Fatalities
January	8	20	-	28
February	12	24	-	36
March	9	15	-	24
April	12	19	-	31
May	12	25	-	37
June	7	32	-	39
July	6	31	-	37
August	6	38	-	44
September	7	24	-	31
October	6	38	-	44
November	5	32	-	37
December	7	31	-	38
Total	97	329	-	426

Alcohol-involved Fatalities ¹ , 2023 to Date			
Month	2023	2022	2021
January	8	12	13
February	12	16	11
March	9	20	17
April	12	13	12
May	12	15	17
June	7	9	10
July	6	16	19
August	6	17	14
September	7	14	23
October	6	17	9
November	5	9	19
December	7	18	14
Total	97	176	178

¹ All fatalities in alcohol-involved crashes.

¹ All fatalities in alcohol-involved crashes.

Fatalities Under 21, 2023 to Date	
Age	Fatalities
1	2
2	1
3	-
4	1
5	-
6	-
7	1
8	-
9	-
10	-
11	-
12	-
13	-
14	2
15	-
16	4
17	3
18	7
19	9
20	10
Total	40

Month in 2023	Total Fatalities, 2023 to Date	Alcohol-involved Fatalities ¹ , 2023 to Date			
		Motorcyclist Fatalities	Percent Motorcyclist Fatalities	Pedestrian Fatalities	Percent Pedestrian Fatalities
January	28	-	0.0%	3	10.7%
February	36	-	0.0%	7	19.4%
March	24	-	0.0%	5	20.8%
April	31	2	6.5%	1	3.2%
May	37	1	2.7%	2	5.4%
June	39	-	0.0%	4	10.3%
July	37	1	2.7%	2	5.4%
August	44	-	0.0%	2	4.5%
September	31	1	3.2%	1	3.2%
October	44	-	0.0%	1	2.3%
November	37	-	0.0%	3	8.1%
December	38	1	2.6%	-	0.0%
Total	426	6	1.4%	31	7.3%

¹ All fatalities in alcohol-involved crashes.

Alcohol-involved Fatalities ¹ , 2023 to Date		
Alcohol-involved	97	23%
Not Alcohol-involved	329	77%
Alcohol Unknown	-	-
Total	426	100%

¹ All fatalities in alcohol-involved crashes.

Motorcyclist Helmet Usage ¹ , 2023 to Date	
Helmet Usage	Fatalities
Yes	22
No	32
Unknown	1
Total	55

¹ Excludes 4W/ATV.

Fatalities by Vehicle ¹ Occupant Seat Belt Usage, 2023 to Date				
Restraint	Yes	No	Unknown	Total
Seat Belt	75	144	2	221

¹ Total vehicle occupant fatalities. Excludes motorcyclist, 4W/ATV, semi truck, pedestrian and pedalcyclist fatalities.

Senior (65+) Fatalities, 2023 to Date	
Year	Fatalities
2023	71
2022	68
2021	60

Fatalities by Residency and Location, 2023 to Date				
Location	New Mexico Resident	Non-Resident	Unknown Residency	Total
Rural	183	48	1	232
Urban	179	14	1	194
Unknown	-	-	-	-
Total	362	62	2	426

Month to Month Comparison of Fatalities by Alcohol Involvement, 2023 to Date												
Month	2023 Fatalities				2022 Fatalities				2021 Fatalities			
	Alcohol-involved ¹			Total	Alcohol-involved ¹			Total	Alcohol-involved ¹			Total
	Yes	No	Unk		Yes	No	Unk		Yes	No	Unk	
January	8	20	-	28	12	18	-	30	13	21	-	34
February	12	24	-	36	16	22	-	38	11	11	-	22
March	9	15	-	24	20	21	-	41	17	17	-	34
April	12	19	-	31	13	20	-	33	12	19	-	31
May	12	25	-	37	15	29	-	44	17	33	-	50
June	7	32	-	39	9	17	-	26	10	33	-	43
July	6	31	-	37	16	37	-	53	19	33	-	52
August	6	38	-	44	17	25	-	42	14	28	-	42
September	7	24	-	31	14	30	-	44	23	31	-	54
October	6	38	-	44	17	26	-	43	9	29	-	38
November	5	32	-	37	9	26	-	35	19	24	-	43
December	7	31	-	38	18	19	-	37	14	26	-	40
Total	97	329	-	426	176	290	-	466	178	305	-	483

¹ Identifies whether the fatality resulted from an alcohol-involved crash.

Month to Month Comparison of Fatalities by Seat Belt Usage, 2023 to Date												
Month	2023 Fatalities				2022 Fatalities				2021 Fatalities			
	Seat Belt ¹			Total ²	Seat Belt ¹			Total ²	Seat Belt ¹			Total ²
	Yes	No	Unk		Yes	No	Unk		Yes	No	Unk	
January	5	12	-	17	4	12	-	16	10	13	-	23
February	5	11	-	16	9	13	-	22	2	10	-	12
March	5	5	1	11	12	15	-	27	8	14	-	22
April	8	14	-	22	11	15	-	26	12	9	-	21
May	4	14	1	19	5	21	-	26	12	21	-	33
June	8	15	-	23	7	7	-	14	11	14	-	25
July	7	10	-	17	14	26	-	40	10	23	-	33
August	11	13	-	24	6	19	-	25	4	18	-	22
September	1	9	-	10	10	15	-	25	10	20	-	30
October	8	14	-	22	8	13	-	21	11	12	-	23
November	5	14	-	19	11	9	-	20	5	14	-	19
December	8	13	-	21	9	15	-	24	8	16	-	24
Total	75	144	2	221	106	180	-	286	103	184	-	287

¹ Identifies whether a vehicle occupant was belted (Yes), unbelted (No), or belt usage was not reported (Unk).

² Total vehicle occupant fatalities. Excludes motorcyclist, 4W/ATV, semi truck, pedestrian and pedalcyclist fatalities.

Fatalities by County and Month, 2023 To Date														
County	Jan.	Feb.	Mar.	Apr.	May	Jun.	Jul.	Aug.	Sep.	Oct.	Nov.	Dec.	2023 Total, to Date	2022 Total, to Date
Bernalillo	10	14	8	10	6	9	12	13	11	11	5	7	116	109
Catron	-	-	-	-	-	-	-	-	1	-	1	-	2	4
Chaves	-	-	-	-	1	1	-	1	1	1	1	-	6	15
Cibola	1	2	-	1	-	2	3	1	1	3	1	-	15	16
Colfax	-	-	-	-	2	1	-	1	-	-	-	1	5	3
Curry	-	-	1	-	1	-	-	-	1	-	2	2	7	6
De Baca	-	-	-	-	-	-	-	-	-	-	-	-	-	-
Doña Ana	6	4	-	1	2	3	2	2	2	4	3	3	32	29
Eddy	1	-	1	1	4	-	3	3	1	-	4	-	18	18
Grant	-	-	1	3	-	1	-	-	-	-	1	-	6	3
Guadalupe	-	-	-	-	-	-	1	2	-	1	1	2	7	12
Harding	-	-	-	-	1	-	-	-	-	-	-	-	1	-
Hidalgo	-	-	1	-	-	-	-	-	-	-	1	-	2	2
Lea	2	3	-	-	2	1	1	2	-	3	1	3	18	21
Lincoln	-	-	-	1	1	3	1	2	-	-	-	1	9	2
Los Alamos	-	-	-	-	-	-	-	-	-	-	-	-	-	-
Luna	-	-	3	-	-	2	1	2	1	1	2	-	12	15
McKinley	3	2	4	3	1	3	-	3	2	2	-	4	27	34
Mora	-	-	-	-	-	2	-	3	-	-	1	-	6	10
Otero	-	2	2	-	1	-	1	1	1	3	2	1	14	11
Quay	-	1	-	-	2	-	-	-	1	1	-	1	6	11
Rio Arriba	-	-	-	-	-	2	3	-	2	2	-	5	14	14
Roosevelt	1	-	-	1	-	-	-	-	-	-	-	-	2	12
San Juan	2	3	1	-	4	-	2	2	-	1	3	2	20	19
San Miguel	1	-	-	1	3	-	1	1	1	-	-	2	10	7
Sandoval	-	-	1	-	-	3	-	1	-	2	2	-	9	21
Santa Fe	1	1	-	-	1	3	1	3	3	1	1	1	16	25
Sierra	-	-	1	4	-	-	-	-	-	-	-	-	5	2
Socorro	-	1	-	3	1	-	1	-	-	5	-	-	11	14
Taos	-	-	-	1	1	-	-	-	1	-	-	1	4	8
Torrance	-	2	-	-	-	1	4	1	-	2	4	1	15	9
Union	-	-	-	-	-	-	-	-	-	-	-	1	1	2
Valencia	-	1	-	1	3	2	-	-	1	1	1	-	10	12
Total	28	36	24	31	37	39	37	44	31	44	37	38	426	466

Fatalities by County Relating to Alcohol, Belt Use, and Under 21 BAC, 2023 to Date							
County	Alcohol-involved Fatalities ¹		Unbelted Fatalities		Under 21 (15-20) with a BAC ²		Total Fatalities
	Count	Percent ³	Count	Percent ³	Count	Percent ³	
Bernalillo	27	23.3%	32	27.6%	-	0.0%	116
Catron	-	0.0%	1	50.0%	-	0.0%	2
Chaves	2	33.3%	4	66.7%	-	0.0%	6
Cibola	2	13.3%	1	6.7%	-	0.0%	15
Colfax	2	40.0%	3	60.0%	-	0.0%	5
Curry	-	0.0%	1	14.3%	-	0.0%	7
De Baca	-	-	-	-	-	-	-
Doña Ana	6	18.8%	11	34.4%	-	0.0%	32
Eddy	3	16.7%	6	33.3%	-	0.0%	18
Grant	3	50.0%	3	50.0%	-	0.0%	6
Guadalupe	-	0.0%	2	28.6%	-	0.0%	7
Harding	1	100.0%	1	100.0%	-	0.0%	1
Hidalgo	-	0.0%	1	50.0%	-	0.0%	2
Lea	3	16.7%	5	27.8%	-	0.0%	18
Lincoln	-	0.0%	6	66.7%	-	0.0%	9
Los Alamos	-	-	-	-	-	-	-
Luna	1	8.3%	3	25.0%	-	0.0%	12
McKinley	12	44.4%	9	33.3%	-	0.0%	27
Mora	-	0.0%	4	66.7%	-	0.0%	6
Otero	1	7.1%	4	28.6%	-	0.0%	14
Quay	1	16.7%	3	50.0%	-	0.0%	6
Rio Arriba	2	14.3%	5	35.7%	-	0.0%	14
Roosevelt	1	50.0%	-	0.0%	-	0.0%	2
San Juan	8	40.0%	5	25.0%	-	0.0%	20
San Miguel	6	60.0%	5	50.0%	-	0.0%	10
Sandoval	2	22.2%	2	22.2%	-	0.0%	9
Santa Fe	7	43.8%	4	25.0%	-	0.0%	16
Sierra	1	20.0%	5	100.0%	-	0.0%	5
Socorro	4	36.4%	6	54.5%	-	0.0%	11
Taos	1	25.0%	2	50.0%	-	0.0%	4
Torrance	-	0.0%	5	33.3%	-	0.0%	15
Union	-	0.0%	1	100.0%	-	0.0%	1
Valencia	1	10.0%	4	40.0%	-	0.0%	10
Total	97	22.8%	144	33.8%	-	0.0%	426

¹ All fatalities in alcohol-involved crashes.

² Fatalities under 21 with a reported BAC (Blood Alcohol Content) above zero.

³ Percentage based on total fatalities in the county.

Fatalities by County and Vehicle Type, 2023 to Date										
County	Cars	Pickup Trucks	Semi Trucks, Buses	Vans, SUVs, Utility Vehicles	ATV (4W)	Motorcyclists	Pedestrians	Pedalcyclists	Vehicle Type Unknown or Other	Total Fatalities
Bernalillo	34	2	3	9	-	15	50	3	-	116
Catron	-	1	-	-	-	1	-	-	-	2
Chaves	4	1	-	-	-	-	1	-	-	6
Cibola	6	-	6	1	-	1	1	-	-	15
Colfax	2	1	1	-	-	-	1	-	-	5
Curry	2	1	-	-	-	1	3	-	-	7
De Baca	-	-	-	-	-	-	-	-	-	-
Doña Ana	9	2	1	6	-	4	6	4	-	32
Eddy	2	1	6	3	-	4	1	1	-	18
Grant	-	5	-	-	-	-	1	-	-	6
Guadalupe	2	1	1	2	-	1	-	-	-	7
Harding	-	-	-	1	-	-	-	-	-	1
Hidalgo	-	1	-	1	-	-	-	-	-	2
Lea	3	5	1	4	-	1	4	-	-	18
Lincoln	3	2	-	2	-	2	-	-	-	9
Los Alamos	-	-	-	-	-	-	-	-	-	-
Luna	3	1	6	1	-	-	1	-	-	12
McKinley	9	4	2	6	-	-	6	-	-	27
Mora	-	2	-	3	-	1	-	-	-	6
Otero	7	-	-	1	-	4	2	-	-	14
Quay	1	1	2	2	-	-	-	-	-	6
Rio Arriba	2	-	2	4	-	2	3	1	-	14
Roosevelt	2	-	-	-	-	-	-	-	-	2
San Juan	6	1	-	2	-	4	6	-	1	20
San Miguel	1	3	-	1	-	2	2	1	-	10
Sandoval	-	1	1	2	-	2	3	-	-	9
Santa Fe	4	-	1	3	-	2	6	-	-	16
Sierra	-	1	-	4	-	-	-	-	-	5
Socorro	5	1	-	3	-	1	1	-	-	11
Taos	-	-	1	2	-	1	-	-	-	4
Torrance	5	-	4	3	-	-	3	-	-	15
Union	1	-	-	-	-	-	-	-	-	1
Valencia	1	-	-	3	-	6	-	-	-	10
Total	114	38	38	69	-	55	101	10	1	426

Motorcycle ¹ Fatalities by County and Month, 2023 to Date														
County	Jan.	Feb.	Mar.	Apr.	May	Jun.	Jul.	Aug.	Sep.	Oct.	Nov.	Dec.	2023 Total, to Date	2022 Total, to Date
Bernalillo	2	2	-	3	-	1	2	2	2	-	1	-	15	21
Catron	-	-	-	-	-	-	-	-	1	-	-	-	1	1
Chaves	-	-	-	-	-	-	-	-	-	-	-	-	-	-
Cibola	-	-	-	-	-	1	-	-	-	-	-	-	1	-
Colfax	-	-	-	-	-	-	-	-	-	-	-	-	-	-
Curry	-	-	-	-	-	-	-	-	-	-	1	-	1	1
De Baca	-	-	-	-	-	-	-	-	-	-	-	-	-	-
Doña Ana	-	-	-	-	1	-	1	-	-	1	-	1	4	5
Eddy	-	-	-	-	1	-	-	2	-	-	1	-	4	1
Grant	-	-	-	-	-	-	-	-	-	-	-	-	-	1
Guadalupe	-	-	-	-	-	-	-	1	-	-	-	-	1	-
Harding	-	-	-	-	-	-	-	-	-	-	-	-	-	-
Hidalgo	-	-	-	-	-	-	-	-	-	-	-	-	-	-
Lea	-	-	-	-	-	-	-	-	-	-	-	1	1	3
Lincoln	-	-	-	-	-	-	1	1	-	-	-	-	2	1
Los Alamos	-	-	-	-	-	-	-	-	-	-	-	-	-	-
Luna	-	-	-	-	-	-	-	-	-	-	-	-	-	2
McKinley	-	-	-	-	-	-	-	-	-	-	-	-	-	1
Mora	-	-	-	-	-	1	-	-	-	-	-	-	1	-
Otero	-	-	1	-	1	-	-	-	-	1	1	-	4	1
Quay	-	-	-	-	-	-	-	-	-	-	-	-	-	1
Rio Arriba	-	-	-	-	-	-	1	-	1	-	-	-	2	1
Roosevelt	-	-	-	-	-	-	-	-	-	-	-	-	-	1
San Juan	1	1	-	-	1	-	1	-	-	-	-	-	4	2
San Miguel	-	-	-	-	-	-	1	-	1	-	-	-	2	1
Sandoval	-	-	1	-	-	1	-	-	-	-	-	-	2	2
Santa Fe	-	-	-	-	-	1	-	-	1	-	-	-	2	5
Sierra	-	-	-	-	-	-	-	-	-	-	-	-	-	1
Socorro	-	-	-	-	-	-	-	-	-	1	-	-	1	1
Taos	-	-	-	-	1	-	-	-	-	-	-	-	1	-
Torrance	-	-	-	-	-	-	-	-	-	-	-	-	-	-
Union	-	-	-	-	-	-	-	-	-	-	-	-	-	-
Valencia	-	1	-	1	2	1	-	-	1	-	-	-	6	1
Total	3	4	2	4	7	6	7	6	7	3	4	2	55	54

¹ The term motorcycle includes motorized scooters and mopeds, but excludes 4W/ATVs.

Motorcycle ¹ Fatalities by County Relating to Alcohol, Helmet Use, and Age, 2023 to Date							
County	Alcohol-involved Fatalities ²		Unhelmeted Fatalities		Fatalities Under Age 30 (Ages 15-29)		Total Fatalities
	Count	Percent ³	Count	Percent ³	Count	Percent ³	
Bernalillo	2	13.3%	11	73.3%	2	13.3%	15
Catron	-	0.0%	1	100.0%	-	0.0%	1
Chaves	-	-	-	-	-	-	-
Cibola	-	0.0%	1	100.0%	-	0.0%	1
Colfax	-	-	-	-	-	-	-
Curry	-	0.0%	1	100.0%	-	0.0%	1
De Baca	-	-	-	-	-	-	-
Doña Ana	1	25.0%	2	50.0%	-	0.0%	4
Eddy	1	25.0%	-	0.0%	1	25.0%	4
Grant	-	-	-	-	-	-	-
Guadalupe	-	0.0%	1	100.0%	-	0.0%	1
Harding	-	-	-	-	-	-	-
Hidalgo	-	-	-	-	-	-	-
Lea	-	0.0%	-	0.0%	-	0.0%	1
Lincoln	-	0.0%	-	0.0%	-	0.0%	2
Los Alamos	-	-	-	-	-	-	-
Luna	-	-	-	-	-	-	-
McKinley	-	-	-	-	-	-	-
Mora	-	0.0%	1	100.0%	-	0.0%	1
Otero	-	0.0%	-	0.0%	-	0.0%	4
Quay	-	-	-	-	-	-	-
Rio Arriba	-	0.0%	2	100.0%	-	0.0%	2
Roosevelt	-	-	-	-	-	-	-
San Juan	2	50.0%	3	75.0%	1	25.0%	4
San Miguel	-	0.0%	-	0.0%	-	0.0%	2
Sandoval	-	0.0%	1	50.0%	-	0.0%	2
Santa Fe	1	50.0%	1	50.0%	-	0.0%	2
Sierra	-	-	-	-	-	-	-
Socorro	-	0.0%	1	100.0%	-	0.0%	1
Taos	-	0.0%	1	100.0%	-	0.0%	1
Torrance	-	-	-	-	-	-	-
Union	-	-	-	-	-	-	-
Valencia	1	16.7%	5	83.3%	-	0.0%	6
Total	8	14.5%	32	58.2%	4	7.3%	55

¹ The term motorcycle includes motorized scooters and mopeds, but excludes 4W/ATVs.

² All motorcycle fatalities in alcohol-involved crashes.

³ Percentage based on total motorcycle fatalities in the county.

Fatalities by Maintenance District and Month, 2023 to Date													
District	Jan.	Feb.	Mar.	Apr.	May	Jun.	Jul.	Aug.	Sep.	Oct.	Nov.	Dec.	Total
District 1	6	5	6	11	3	6	4	4	3	10	7	3	68
District 2	4	5	4	3	10	5	6	9	4	7	10	7	74
District 3	10	15	9	11	9	11	12	14	12	14	8	7	132
District 4	1	1	-	1	8	3	2	7	2	2	2	7	36
District 5	3	6	1	1	6	6	10	6	6	6	8	10	69
District 6	4	4	4	4	1	8	3	4	4	5	2	4	47
Total	28	36	24	31	37	39	37	44	31	44	37	38	426

Fatalities by Maintenance District Relating to Alcohol, Belt Use, and Under 21 BAC, 2023 to Date							
District	Alcohol-involved Fatalities ¹		Unbelted Fatalities		Under 21 (15-20) Fatalities with a BAC ²		Total Fatalities
	Count	Percent ³	Count	Percent ³	Count	Percent ³	
District 1	15	22.1%	29	42.6%	-	0.0%	68
District 2	10	13.5%	26	35.1%	-	0.0%	74
District 3	29	22.0%	38	28.8%	-	0.0%	132
District 4	10	27.8%	19	52.8%	-	0.0%	36
District 5	18	26.1%	21	30.4%	-	0.0%	69
District 6	15	31.9%	11	23.4%	-	0.0%	47
Total	97	22.8%	144	33.8%	-	0.0%	426

¹ All fatalities in alcohol-involved crashes.

² Fatalities under 21 with a reported BAC (Blood Alcohol Content) above zero.

³ Percentage based on total fatalities in the district