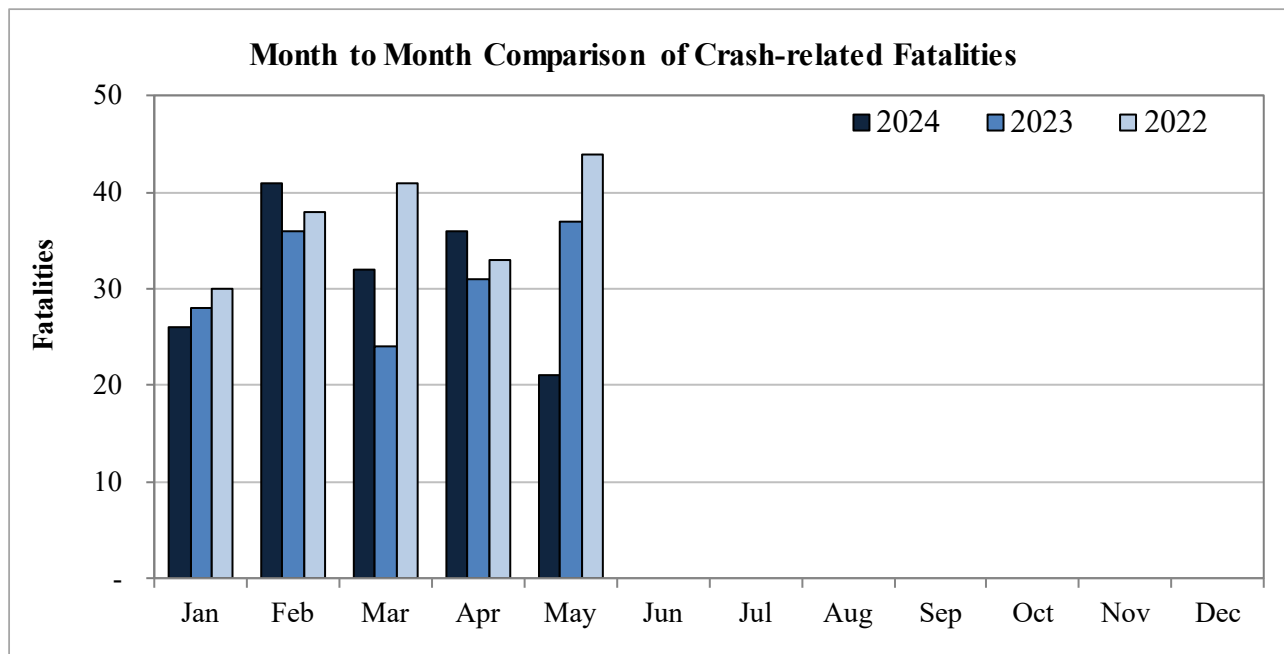


## New Mexico Monthly Traffic Fatality Report, 2024

Produced for the New Mexico Department of Transportation, Traffic Safety Division, Traffic Records Bureau,  
Under Contract No. 6380 by UNM Geospatial and Population Studies, Traffic Research Unit (TRU)

Fatalities by Month 2024, 2023, 2022 Year to Date			
Month	2024	2023	2022
January	26	28	30
February	41	36	38
March	32	24	41
April	36	31	33
May	21	37	44
June	-	-	-
July	-	-	-
August	-	-	-
September	-	-	-
October	-	-	-
November	-	-	-
December	-	-	-
<b>Total</b>	<b>156</b>	<b>156</b>	<b>186</b>



Fatalities by Vehicle Type, 2024 to Date										
Month in 2024	Cars	Pickup Trucks	Semi Trucks, Buses	Vans, SUVs, Utility Vehicles	ATV (4W)	Motorcyclists	Pedestrians	Pedalcyclists	Vehicle Type Unknown or Other	Total Fatalities
January	7	2	4	4	-	-	9	-	-	26
February	13	9	-	4	-	4	10	1	-	41
March	7	3	3	4	-	6	8	-	1	32
April	16	1	1	6	-	5	5	1	1	36
May	5	-	-	1	-	6	8	1	-	21
June	-	-	-	-	-	-	-	-	-	-
July	-	-	-	-	-	-	-	-	-	-
August	-	-	-	-	-	-	-	-	-	-
September	-	-	-	-	-	-	-	-	-	-
October	-	-	-	-	-	-	-	-	-	-
November	-	-	-	-	-	-	-	-	-	-
December	-	-	-	-	-	-	-	-	-	-
<b>Total</b>	<b>48</b>	<b>15</b>	<b>8</b>	<b>19</b>	<b>-</b>	<b>21</b>	<b>40</b>	<b>3</b>	<b>2</b>	<b>156</b>

Fatalities by Alcohol Involvement <sup>1</sup> , 2024 to Date				
Month in 2024	Alcohol-involved <sup>1</sup>	Not Alcohol-involved	Alcohol Unknown	Total Fatalities
January	1	25	-	26
February	5	36	-	41
March	6	26	-	32
April	6	30	-	36
May	5	16	-	21
June	-	-	-	-
July	-	-	-	-
August	-	-	-	-
September	-	-	-	-
October	-	-	-	-
November	-	-	-	-
December	-	-	-	-
<b>Total</b>	<b>23</b>	<b>133</b>	<b>-</b>	<b>156</b>

Alcohol-involved Fatalities <sup>1</sup> , 2024 to Date			
Month	2024	2023	2022
January	1	8	12
February	5	12	16
March	6	9	20
April	6	12	13
May	5	12	15
June	-	-	-
July	-	-	-
August	-	-	-
September	-	-	-
October	-	-	-
November	-	-	-
December	-	-	-
<b>Total</b>	<b>23</b>	<b>53</b>	<b>76</b>

<sup>1</sup> All fatalities in alcohol-involved crashes.

<sup>1</sup> All fatalities in alcohol-involved crashes.

Fatalities Under 21, 2024 to Date	
Age	Fatalities
1	2
2	-
3	-
4	1
5	-
6	-
7	-
8	-
9	1
10	-
11	-
12	-
13	1
14	-
15	-
16	-
17	-
18	-
19	4
20	3
<b>Total</b>	<b>12</b>

Month in 2024	Total Fatalities, 2024 to Date	Alcohol-involved Fatalities <sup>1</sup> , 2024 to Date			
		Motorcyclist Fatalities	Percent Motorcyclist Fatalities	Pedestrian Fatalities	Percent Pedestrian Fatalities
January	26	-	0.0%	-	0.0%
February	41	-	0.0%	-	0.0%
March	32	-	0.0%	2	6.3%
April	36	-	0.0%	-	0.0%
May	21	1	4.8%	1	4.8%
June	-	-	-	-	-
July	-	-	-	-	-
August	-	-	-	-	-
September	-	-	-	-	-
October	-	-	-	-	-
November	-	-	-	-	-
December	-	-	-	-	-
<b>Total</b>	<b>156</b>	<b>1</b>	<b>0.6%</b>	<b>3</b>	<b>1.9%</b>

<sup>1</sup> All fatalities in alcohol-involved crashes.

Alcohol-involved Fatalities <sup>1</sup> , 2024 to Date		
Alcohol-involved	23	15%
Not Alcohol-involved	133	85%
Alcohol Unknown	-	-
<b>Total</b>	<b>156</b>	<b>100%</b>

<sup>1</sup> All fatalities in alcohol-involved crashes.

Motorcyclist Helmet Usage <sup>1</sup> , 2024 to Date	
Helmet Usage	Fatalities
Yes	5
No	16
Unknown	-
<b>Total</b>	<b>21</b>

<sup>1</sup> Excludes 4W/ATV.

Fatalities by Vehicle <sup>1</sup> Occupant Seat Belt Usage, 2024 to Date				
Restraint	Yes	No	Unknown	Total
Seat Belt	21	59	2	82

<sup>1</sup> Total vehicle occupant fatalities. Excludes motorcyclist, 4W/ATV, semi truck, pedestrian and pedalcyclist fatalities.

Senior (65+) Fatalities, 2024 to Date	
Year	Fatalities
2024	27
2023	29
2022	20

Fatalities by Residency and Location, 2024 to Date				
Location	New Mexico Resident	Non-Resident	Unknown Residency	Total
Rural	63	18	7	88
Urban	59	1	8	68
Unknown	-	-	-	-
<b>Total</b>	<b>122</b>	<b>19</b>	<b>15</b>	<b>156</b>

Month to Month Comparison of Fatalities by Alcohol Involvement, 2024 to Date												
Month	2024 Fatalities				2023 Fatalities				2022 Fatalities			
	Alcohol-involved <sup>1</sup>			Total	Alcohol-involved <sup>1</sup>			Total	Alcohol-involved <sup>1</sup>			Total
	Yes	No	Unk		Yes	No	Unk		Yes	No	Unk	
January	1	25	-	26	8	20	-	28	12	18	-	30
February	5	36	-	41	12	24	-	36	16	22	-	38
March	6	26	-	32	9	15	-	24	20	21	-	41
April	6	30	-	36	12	19	-	31	13	20	-	33
May	5	16	-	21	12	25	-	37	15	29	-	44
June	-	-	-	-	-	-	-	-	-	-	-	-
July	-	-	-	-	-	-	-	-	-	-	-	-
August	-	-	-	-	-	-	-	-	-	-	-	-
September	-	-	-	-	-	-	-	-	-	-	-	-
October	-	-	-	-	-	-	-	-	-	-	-	-
November	-	-	-	-	-	-	-	-	-	-	-	-
December	-	-	-	-	-	-	-	-	-	-	-	-
<b>Total</b>	<b>23</b>	<b>133</b>	<b>-</b>	<b>156</b>	<b>53</b>	<b>103</b>	<b>-</b>	<b>156</b>	<b>76</b>	<b>110</b>	<b>-</b>	<b>186</b>

<sup>1</sup> Identifies whether the fatality resulted from an alcohol-involved crash.

Month to Month Comparison of Fatalities by Seat Belt Usage, 2024 to Date												
Month	2024 Fatalities				2023 Fatalities				2022 Fatalities			
	Seat Belt <sup>1</sup>			Total <sup>2</sup>	Seat Belt <sup>1</sup>			Total <sup>2</sup>	Seat Belt <sup>1</sup>			Total <sup>2</sup>
	Yes	No	Unk		Yes	No	Unk		Yes	No	Unk	
January	6	7	-	13	5	12	-	17	4	12	-	16
February	6	20	-	26	5	11	-	16	9	13	-	22
March	4	9	1	14	5	5	1	11	12	15	-	27
April	5	18	-	23	8	14	-	22	11	15	-	26
May	-	5	1	6	4	14	1	19	5	21	-	26
June	-	-	-	-	-	-	-	-	-	-	-	-
July	-	-	-	-	-	-	-	-	-	-	-	-
August	-	-	-	-	-	-	-	-	-	-	-	-
September	-	-	-	-	-	-	-	-	-	-	-	-
October	-	-	-	-	-	-	-	-	-	-	-	-
November	-	-	-	-	-	-	-	-	-	-	-	-
December	-	-	-	-	-	-	-	-	-	-	-	-
<b>Total</b>	<b>21</b>	<b>59</b>	<b>2</b>	<b>82</b>	<b>27</b>	<b>56</b>	<b>2</b>	<b>85</b>	<b>41</b>	<b>76</b>	<b>-</b>	<b>117</b>

<sup>1</sup> Identifies whether a vehicle occupant was belted (Yes), unbelted (No), or belt usage was not reported (Unk).

<sup>2</sup> Total vehicle occupant fatalities. Excludes motorcyclist, 4W/ATV, semi truck, pedestrian and pedalcyclist fatalities.

Fatalities by County and Month, 2024 To Date														
County	Jan.	Feb.	Mar.	Apr.	May	Jun.	Jul.	Aug.	Sep.	Oct.	Nov.	Dec.	2024 Total, to Date	2023 Total, to Date
Bernalillo	8	13	13	9	7	-	-	-	-	-	-	-	50	48
Catron	-	-	1	-	-	-	-	-	-	-	-	-	1	-
Chaves	-	3	2	3	-	-	-	-	-	-	-	-	8	1
Cibola	1	-	-	1	-	-	-	-	-	-	-	-	2	4
Colfax	-	1	-	-	-	-	-	-	-	-	-	-	1	2
Curry	-	2	-	-	1	-	-	-	-	-	-	-	3	2
De Baca	1	-	-	-	-	-	-	-	-	-	-	-	1	-
Doña Ana	3	2	3	1	3	-	-	-	-	-	-	-	12	13
Eddy	1	2	1	2	1	-	-	-	-	-	-	-	7	7
Grant	-	1	1	1	-	-	-	-	-	-	-	-	3	4
Guadalupe	2	1	-	3	-	-	-	-	-	-	-	-	6	-
Harding	-	-	-	-	-	-	-	-	-	-	-	-	-	1
Hidalgo	-	1	-	-	-	-	-	-	-	-	-	-	1	1
Lea	2	1	2	1	2	-	-	-	-	-	-	-	8	7
Lincoln	-	-	-	-	-	-	-	-	-	-	-	-	-	2
Los Alamos	-	1	-	-	-	-	-	-	-	-	-	-	1	-
Luna	1	-	-	-	-	-	-	-	-	-	-	-	1	3
McKinley	1	-	1	2	1	-	-	-	-	-	-	-	5	13
Mora	-	-	-	-	-	-	-	-	-	-	-	-	-	-
Otero	-	-	1	1	1	-	-	-	-	-	-	-	3	5
Quay	-	-	1	-	-	-	-	-	-	-	-	-	1	3
Rio Arriba	1	2	1	1	1	-	-	-	-	-	-	-	6	-
Roosevelt	-	-	-	-	1	-	-	-	-	-	-	-	1	2
San Juan	1	5	2	2	1	-	-	-	-	-	-	-	11	10
San Miguel	1	-	-	-	1	-	-	-	-	-	-	-	2	5
Sandoval	-	1	1	1	-	-	-	-	-	-	-	-	3	1
Santa Fe	2	2	1	2	-	-	-	-	-	-	-	-	7	3
Sierra	-	-	-	-	-	-	-	-	-	-	-	-	-	5
Socorro	-	1	-	3	-	-	-	-	-	-	-	-	4	5
Taos	1	-	1	1	-	-	-	-	-	-	-	-	3	2
Torrance	-	1	-	1	1	-	-	-	-	-	-	-	3	2
Union	-	-	-	-	-	-	-	-	-	-	-	-	-	-
Valencia	-	1	-	1	-	-	-	-	-	-	-	-	2	5
<b>Total</b>	<b>26</b>	<b>41</b>	<b>32</b>	<b>36</b>	<b>21</b>	<b>-</b>	<b>-</b>	<b>-</b>	<b>-</b>	<b>-</b>	<b>-</b>	<b>-</b>	<b>156</b>	<b>156</b>

Fatalities by County Relating to Alcohol, Belt Use, and Under 21 BAC, 2024 to Date							
County	Alcohol-involved Fatalities <sup>1</sup>		Unbelted Fatalities		Under 21 (15-20) with a BAC <sup>2</sup>		Total Fatalities
	Count	Percent <sup>3</sup>	Count	Percent <sup>3</sup>	Count	Percent <sup>3</sup>	
Bernalillo	6	12.0%	13	26.0%	-	0.0%	50
Catron	-	0.0%	1	100.0%	-	0.0%	1
Chaves	-	0.0%	5	62.5%	-	0.0%	8
Cibola	-	0.0%	1	50.0%	-	0.0%	2
Colfax	-	0.0%	-	0.0%	-	0.0%	1
Curry	-	0.0%	-	0.0%	-	0.0%	3
De Baca	-	0.0%	1	100.0%	-	0.0%	1
Doña Ana	3	25.0%	4	33.3%	-	0.0%	12
Eddy	1	14.3%	3	42.9%	-	0.0%	7
Grant	1	33.3%	1	33.3%	-	0.0%	3
Guadalupe	-	0.0%	3	50.0%	-	0.0%	6
Harding	-	-	-	-	-	-	-
Hidalgo	-	0.0%	-	0.0%	-	0.0%	1
Lea	-	0.0%	4	50.0%	-	0.0%	8
Lincoln	-	-	-	-	-	-	-
Los Alamos	-	0.0%	1	100.0%	-	0.0%	1
Luna	-	0.0%	-	0.0%	-	0.0%	1
McKinley	2	40.0%	3	60.0%	-	0.0%	5
Mora	-	-	-	-	-	-	-
Otero	-	0.0%	2	66.7%	-	0.0%	3
Quay	-	0.0%	-	0.0%	-	0.0%	1
Rio Arriba	1	16.7%	2	33.3%	-	0.0%	6
Roosevelt	-	0.0%	-	0.0%	-	0.0%	1
San Juan	4	36.4%	6	54.5%	-	0.0%	11
San Miguel	-	0.0%	-	0.0%	-	0.0%	2
Sandoval	-	0.0%	-	0.0%	-	0.0%	3
Santa Fe	3	42.9%	3	42.9%	-	0.0%	7
Sierra	-	-	-	-	-	-	-
Socorro	-	0.0%	2	50.0%	-	0.0%	4
Taos	1	33.3%	2	66.7%	-	0.0%	3
Torrance	1	33.3%	1	33.3%	-	0.0%	3
Union	-	-	-	-	-	-	-
Valencia	-	0.0%	1	50.0%	-	0.0%	2
<b>Total</b>	<b>23</b>	<b>14.7%</b>	<b>59</b>	<b>37.8%</b>	<b>-</b>	<b>0.0%</b>	<b>156</b>

<sup>1</sup> All fatalities in alcohol-involved crashes.

<sup>2</sup> Fatalities under 21 with a reported BAC (Blood Alcohol Content) above zero.

<sup>3</sup> Percentage based on total fatalities in the county.

Fatalities by County and Vehicle Type, 2024 to Date										
County	Cars	Pickup Trucks	Semi Trucks, Buses	Vans, SUVs, Utility Vehicles	ATV (4W)	Motorcyclists	Pedestrians	Pedalcyclists	Vehicle Type Unknown or Other	Total Fatalities
Bernalillo	15	2	2	3	-	7	20	1	-	50
Catron	1	-	-	-	-	-	-	-	-	1
Chaves	2	3	-	-	-	1	2	-	-	8
Cibola	1	-	1	-	-	-	-	-	-	2
Colfax	-	1	-	-	-	-	-	-	-	1
Curry	-	-	-	-	-	-	3	-	-	3
De Baca	-	-	-	1	-	-	-	-	-	1
Doña Ana	2	1	1	2	-	2	3	1	-	12
Eddy	4	-	-	-	-	2	1	-	-	7
Grant	1	1	-	-	-	1	-	-	-	3
Guadalupe	3	-	1	1	-	-	-	-	1	6
Harding	-	-	-	-	-	-	-	-	-	-
Hidalgo	-	-	-	1	-	-	-	-	-	1
Lea	2	3	-	1	-	1	1	-	-	8
Lincoln	-	-	-	-	-	-	-	-	-	-
Los Alamos	1	-	-	-	-	-	-	-	-	1
Luna	-	-	1	-	-	-	-	-	-	1
McKinley	1	-	-	2	-	-	1	-	1	5
Mora	-	-	-	-	-	-	-	-	-	-
Otero	2	-	1	-	-	-	-	-	-	3
Quay	-	-	-	-	-	-	1	-	-	1
Rio Arriba	-	1	-	2	-	1	2	-	-	6
Roosevelt	-	-	-	-	-	1	-	-	-	1
San Juan	5	-	-	1	-	1	4	-	-	11
San Miguel	1	-	-	-	-	1	-	-	-	2
Sandoval	-	-	-	1	-	2	-	-	-	3
Santa Fe	2	2	-	1	-	-	1	1	-	7
Sierra	-	-	-	-	-	-	-	-	-	-
Socorro	2	-	-	2	-	-	-	-	-	4
Taos	2	-	-	1	-	-	-	-	-	3
Torrance	-	1	1	-	-	-	1	-	-	3
Union	-	-	-	-	-	-	-	-	-	-
Valencia	1	-	-	-	-	1	-	-	-	2
<b>Total</b>	<b>48</b>	<b>15</b>	<b>8</b>	<b>19</b>	<b>-</b>	<b>21</b>	<b>40</b>	<b>3</b>	<b>2</b>	<b>156</b>

Motorcycle <sup>1</sup> Fatalities by County and Month, 2024 to Date														
County	Jan.	Feb.	Mar.	Apr.	May	Jun.	Jul.	Aug.	Sep.	Oct.	Nov.	Dec.	2024 Total, to Date	2023 Total, to Date
Bernalillo	-	3	3	1	-	-	-	-	-	-	-	-	7	7
Catron	-	-	-	-	-	-	-	-	-	-	-	-	-	-
Chaves	-	-	-	1	-	-	-	-	-	-	-	-	1	-
Cibola	-	-	-	-	-	-	-	-	-	-	-	-	-	-
Colfax	-	-	-	-	-	-	-	-	-	-	-	-	-	-
Curry	-	-	-	-	-	-	-	-	-	-	-	-	-	-
De Baca	-	-	-	-	-	-	-	-	-	-	-	-	-	-
Doña Ana	-	-	-	-	2	-	-	-	-	-	-	-	2	1
Eddy	-	1	-	-	1	-	-	-	-	-	-	-	2	1
Grant	-	-	1	-	-	-	-	-	-	-	-	-	1	-
Guadalupe	-	-	-	-	-	-	-	-	-	-	-	-	-	-
Harding	-	-	-	-	-	-	-	-	-	-	-	-	-	-
Hidalgo	-	-	-	-	-	-	-	-	-	-	-	-	-	-
Lea	-	-	1	-	-	-	-	-	-	-	-	-	1	-
Lincoln	-	-	-	-	-	-	-	-	-	-	-	-	-	-
Los Alamos	-	-	-	-	-	-	-	-	-	-	-	-	-	-
Luna	-	-	-	-	-	-	-	-	-	-	-	-	-	-
McKinley	-	-	-	-	-	-	-	-	-	-	-	-	-	-
Mora	-	-	-	-	-	-	-	-	-	-	-	-	-	-
Otero	-	-	-	-	-	-	-	-	-	-	-	-	-	2
Quay	-	-	-	-	-	-	-	-	-	-	-	-	-	-
Rio Arriba	-	-	-	1	-	-	-	-	-	-	-	-	1	-
Roosevelt	-	-	-	-	1	-	-	-	-	-	-	-	1	-
San Juan	-	-	-	-	1	-	-	-	-	-	-	-	1	3
San Miguel	-	-	-	-	1	-	-	-	-	-	-	-	1	-
Sandoval	-	-	1	1	-	-	-	-	-	-	-	-	2	1
Santa Fe	-	-	-	-	-	-	-	-	-	-	-	-	-	-
Sierra	-	-	-	-	-	-	-	-	-	-	-	-	-	-
Socorro	-	-	-	-	-	-	-	-	-	-	-	-	-	-
Taos	-	-	-	-	-	-	-	-	-	-	-	-	-	1
Torrance	-	-	-	-	-	-	-	-	-	-	-	-	-	-
Union	-	-	-	-	-	-	-	-	-	-	-	-	-	-
Valencia	-	-	-	1	-	-	-	-	-	-	-	-	1	4
<b>Total</b>	-	<b>4</b>	<b>6</b>	<b>5</b>	<b>6</b>	-	-	-	-	-	-	-	<b>21</b>	<b>20</b>

<sup>1</sup> The term motorcycle includes motorized scooters and mopeds, but excludes 4W/ATVs.



Motorcycle <sup>1</sup> Fatalities by County Relating to Alcohol, Helmet Use, and Age, 2024 to Date							
County	Alcohol-involved Fatalities <sup>2</sup>		Unhelmeted Fatalities		Fatalities Under Age 30 (Ages 15-29)		Total Fatalities
	Count	Percent <sup>3</sup>	Count	Percent <sup>3</sup>	Count	Percent <sup>3</sup>	
Bernalillo	-	0.0%	6	85.7%	-	0.0%	7
Catron	-	-	-	-	-	-	-
Chaves	-	0.0%	1	100.0%	-	0.0%	1
Cibola	-	-	-	-	-	-	-
Colfax	-	-	-	-	-	-	-
Curry	-	-	-	-	-	-	-
De Baca	-	-	-	-	-	-	-
Doña Ana	1	50.0%	2	100.0%	-	0.0%	2
Eddy	-	0.0%	1	50.0%	-	0.0%	2
Grant	-	0.0%	1	100.0%	-	0.0%	1
Guadalupe	-	-	-	-	-	-	-
Harding	-	-	-	-	-	-	-
Hidalgo	-	-	-	-	-	-	-
Lea	-	0.0%	1	100.0%	-	0.0%	1
Lincoln	-	-	-	-	-	-	-
Los Alamos	-	-	-	-	-	-	-
Luna	-	-	-	-	-	-	-
McKinley	-	-	-	-	-	-	-
Mora	-	-	-	-	-	-	-
Otero	-	-	-	-	-	-	-
Quay	-	-	-	-	-	-	-
Rio Arriba	-	0.0%	-	0.0%	-	0.0%	1
Roosevelt	-	0.0%	1	100.0%	-	0.0%	1
San Juan	-	0.0%	1	100.0%	-	0.0%	1
San Miguel	-	0.0%	-	0.0%	-	0.0%	1
Sandoval	-	0.0%	1	50.0%	-	0.0%	2
Santa Fe	-	-	-	-	-	-	-
Sierra	-	-	-	-	-	-	-
Socorro	-	-	-	-	-	-	-
Taos	-	-	-	-	-	-	-
Torrance	-	-	-	-	-	-	-
Union	-	-	-	-	-	-	-
Valencia	-	0.0%	1	100.0%	-	0.0%	1
<b>Total</b>	<b>1</b>	<b>0.0%</b>	<b>16</b>	<b>0.0%</b>	<b>-</b>	<b>0.0%</b>	<b>21</b>

<sup>1</sup> The term motorcycle includes motorized scooters and mopeds, but excludes 4W/ATVs.

<sup>2</sup> All motorcycle fatalities in alcohol-involved crashes.

<sup>3</sup> Percentage based on total motorcycle fatalities in the county.

Fatalities by Maintenance District and Month, 2024 to Date													
District	Jan.	Feb.	Mar.	Apr.	May	Jun.	Jul.	Aug.	Sep.	Oct.	Nov.	Dec.	Total
District 1	4	5	4	5	3	-	-	-	-	-	-	-	21
District 2	4	8	6	7	6	-	-	-	-	-	-	-	31
District 3	8	15	14	11	7	-	-	-	-	-	-	-	55
District 4	3	2	1	3	1	-	-	-	-	-	-	-	10
District 5	5	11	5	7	3	-	-	-	-	-	-	-	31
District 6	2	-	2	3	1	-	-	-	-	-	-	-	8
<b>Total</b>	<b>26</b>	<b>41</b>	<b>32</b>	<b>36</b>	<b>21</b>	<b>-</b>	<b>-</b>	<b>-</b>	<b>-</b>	<b>-</b>	<b>-</b>	<b>-</b>	<b>156</b>

Fatalities by Maintenance District Relating to Alcohol, Belt Use, and Under 21 BAC, 2024 to Date							
District	Alcohol-involved Fatalities <sup>1</sup>		Unbelted Fatalities		Under 21 (15-20) Fatalities with a BAC <sup>2</sup>		Total Fatalities
	Count	Percent <sup>3</sup>	Count	Percent <sup>3</sup>	Count	Percent <sup>3</sup>	
District 1	4	19.0%	7	33.3%	-	0.0%	21
District 2	1	3.2%	15	48.4%	-	0.0%	31
District 3	6	10.9%	14	25.5%	-	0.0%	55
District 4	-	0.0%	3	30.0%	-	0.0%	10
District 5	10	32.3%	15	48.4%	-	0.0%	31
District 6	2	25.0%	5	62.5%	-	0.0%	8
<b>Total</b>	<b>23</b>	<b>14.7%</b>	<b>59</b>	<b>37.8%</b>	<b>-</b>	<b>0.0%</b>	<b>156</b>

<sup>1</sup> All fatalities in alcohol-involved crashes.

<sup>2</sup> Fatalities under 21 with a reported BAC (Blood Alcohol Content) above zero.

<sup>3</sup> Percentage based on total fatalities in the district