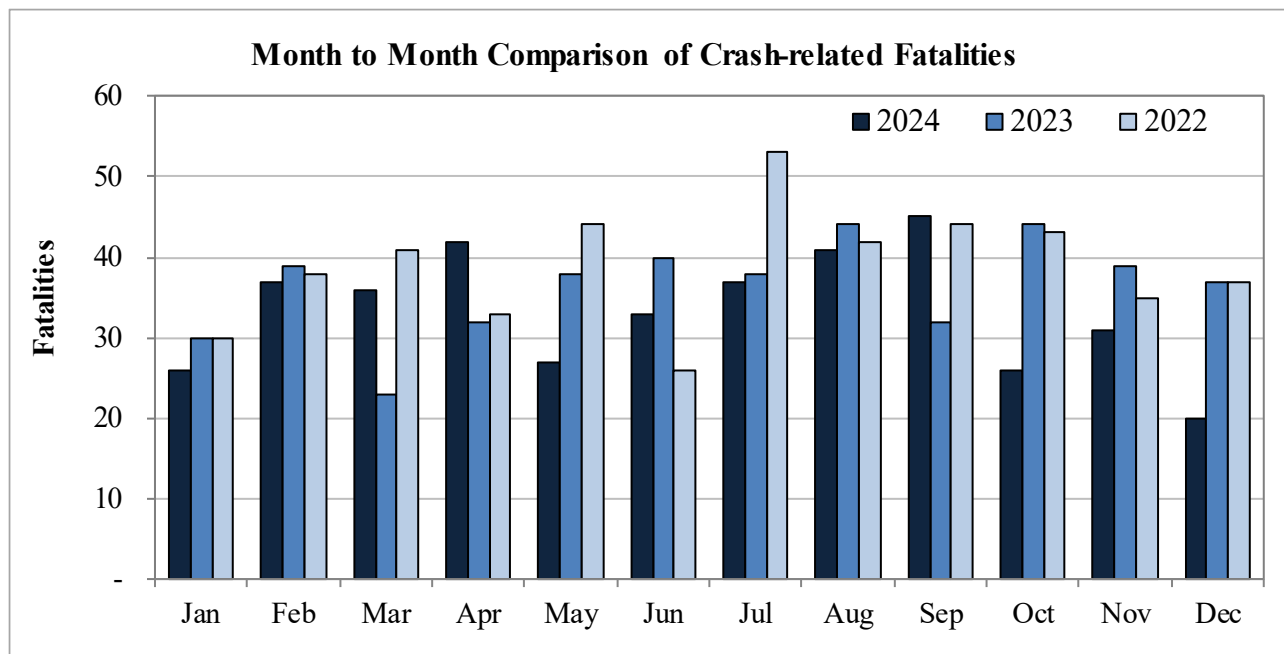


New Mexico Monthly Traffic Fatality Report, 2024

Produced for the New Mexico Department of Transportation, Traffic Safety Division, Traffic Records Bureau,
Under Contract No. 6380 by UNM Geospatial and Population Studies, Traffic Research Unit (TRU)

Fatalities by Month 2024, 2023, 2022 Year to Date			
Month	2024	2023	2022
January	26	30	30
February	37	39	38
March	36	23	41
April	42	32	33
May	27	38	44
June	33	40	26
July	37	38	53
August	41	44	42
September	45	32	44
October	26	44	43
November	31	39	35
December	20	37	37
Total	401	436	466



Fatalities by Vehicle Type, 2024 to Date										
Month in 2024	Cars	Pickup Trucks	Semi Trucks, Buses	Vans, SUVs, Utility Vehicles	ATV (4W)	Motorcyclists	Pedestrians	Pedalcyclists	RVs	Total Fatalities
January	7	4	2	4	-	-	8	1	-	26
February	10	10	-	3	-	4	9	1	-	37
March	10	3	3	5	-	6	8	-	1	36
April	17	2	-	6	-	7	8	1	1	42
May	7	-	-	1	-	6	11	2	-	27
June	12	8	1	4	-	4	3	1	-	33
July	11	7	3	4	-	5	7	-	-	37
August	10	5	2	6	1	7	10	-	-	41
September	17	7	2	6	-	4	9	-	-	45
October	10	2	1	4	-	2	7	-	-	26
November	10	2	2	3	-	3	10	1	-	31
December	7	5	1	4	-	1	2	-	-	20
Total	128	55	17	50	1	49	92	7	2	401

Fatalities by Alcohol Involvement ¹ , 2024 to Date				
Month in 2024	Alcohol-involved ¹	Not Alcohol-involved	Alcohol Unknown	Total Fatalities
January	10	16	-	26
February	8	29	-	37
March	12	24	-	36
April	7	35	-	42
May	8	19	-	27
June	10	23	-	33
July	11	26	-	37
August	8	33	-	41
September	7	38	-	45
October	4	22	-	26
November	6	25	-	31
December	3	17	-	20
Total	94	307	-	401

Alcohol-involved Fatalities ¹ , 2024 to Date			
Month	2024	2023	2022
January	10	8	12
February	8	14	16
March	12	9	20
April	7	14	13
May	8	17	15
June	10	14	9
July	11	13	16
August	8	19	17
September	7	9	14
October	4	13	17
November	6	12	9
December	3	16	18
Total	94	158	176

¹ All fatalities in alcohol-involved crashes.

¹ All fatalities in alcohol-involved crashes.

Fatalities Under 21, 2024 to Date	
Age	Fatalities
1	2
2	-
3	1
4	1
5	-
6	-
7	-
8	1
9	1
10	-
11	-
12	-
13	1
14	1
15	1
16	5
17	5
18	5
19	12
20	7
Total	43

Month in 2024	Total Fatalities, 2024 to Date	Alcohol-involved Fatalities ¹ , 2024 to Date			
		Motorcyclist Fatalities	Percent Motorcyclist Fatalities	Pedestrian Fatalities	Percent Pedestrian Fatalities
January	26	-	0.0%	5	19.2%
February	37	-	0.0%	2	5.4%
March	36	2	5.6%	4	11.1%
April	42	-	0.0%	-	0.0%
May	27	1	3.7%	2	7.4%
June	33	1	3.0%	-	0.0%
July	37	1	2.7%	4	10.8%
August	41	-	0.0%	-	0.0%
September	45	-	0.0%	1	2.2%
October	26	-	0.0%	1	3.8%
November	31	-	0.0%	2	6.5%
December	20	-	0.0%	-	0.0%
Total	401	5	1.2%	21	5.2%

¹ All fatalities in alcohol-involved crashes.

Alcohol-involved Fatalities ¹ , 2024 to Date		
Alcohol-involved	94	23%
Not Alcohol-involved	307	77%
Alcohol Unknown	-	-
Total	401	100%

¹ All fatalities in alcohol-involved crashes.

Motorcyclist Helmet Usage ¹ , 2024 to Date	
Helmet Usage	Fatalities
Yes	16
No	33
Unknown	-
Total	49

¹ Excludes 4W/ATV.

Fatalities by Vehicle ¹ Occupant Seat Belt Usage, 2024 to Date				
Restraint	Yes	No	Unknown	Total
Seat Belt	74	158	1	233

¹ Total vehicle occupant fatalities. Excludes motorcyclist, 4W/ATV, semi truck, pedestrian and pedalcyclist fatalities.

Senior (65+) Fatalities, 2024 to Date	
Year	Fatalities
2024	63
2023	73
2022	68

Fatalities by Residency and Location, 2024 to Date				
Location	New Mexico Resident	Non-Resident	Unknown Residency	Total
Rural	152	70	3	225
Urban	153	15	7	175
Unknown	1	-	-	1
Total	306	85	10	401

Month to Month Comparison of Fatalities by Alcohol Involvement, 2024 to Date												
Month	2024 Fatalities				2023 Fatalities				2022 Fatalities			
	Alcohol-involved ¹			Total	Alcohol-involved ¹			Total	Alcohol-involved ¹			Total
	Yes	No	Unk		Yes	No	Unk		Yes	No	Unk	
January	10	16	-	26	8	22	-	30	12	18	-	30
February	8	29	-	37	14	25	-	39	16	22	-	38
March	12	24	-	36	9	14	-	23	20	21	-	41
April	7	35	-	42	14	18	-	32	13	20	-	33
May	8	19	-	27	17	21	-	38	15	29	-	44
June	10	23	-	33	14	26	-	40	9	17	-	26
July	11	26	-	37	13	25	-	38	16	37	-	53
August	8	33	-	41	19	25	-	44	17	25	-	42
September	7	38	-	45	9	23	-	32	14	30	-	44
October	4	22	-	26	13	31	-	44	17	26	-	43
November	6	25	-	31	12	27	-	39	9	26	-	35
December	3	17	-	20	16	21	-	37	18	19	-	37
Total	94	307	-	401	158	278	-	436	176	290	-	466

¹ Identifies whether the fatality resulted from an alcohol-involved crash.

Month to Month Comparison of Fatalities by Seat Belt Usage, 2024 to Date												
Month	2024 Fatalities				2023 Fatalities				2022 Fatalities			
	Seat Belt ¹			Total ²	Seat Belt ¹			Total ²	Seat Belt ¹			Total ²
	Yes	No	Unk		Yes	No	Unk		Yes	No	Unk	
January	6	9	-	15	8	11	-	19	4	12	-	16
February	7	16	-	23	6	11	-	17	9	13	-	22
March	5	13	-	18	5	4	1	10	12	15	-	27
April	6	19	-	25	8	15	-	23	11	15	-	26
May	-	8	-	8	3	18	-	21	5	21	-	26
June	7	17	-	24	8	15	-	23	7	7	-	14
July	7	15	-	22	8	10	-	18	14	26	-	40
August	8	12	1	21	11	13	-	24	6	19	-	25
September	9	21	-	30	1	10	-	11	10	15	-	25
October	9	7	-	16	7	16	-	23	8	13	-	21
November	4	11	-	15	9	13	-	22	11	9	-	20
December	6	10	-	16	9	15	-	24	9	15	-	24
Total	74	158	1	233	83	151	1	235	106	180	-	286

¹ Identifies whether a vehicle occupant was belted (Yes), unbelted (No), or belt usage was not reported (Unk).

² Total vehicle occupant fatalities. Excludes motorcyclist, 4W/ATV, semi truck, pedestrian and pedalcyclist fatalities.

Fatalities by County and Month, 2024 To Date														
County	Jan.	Feb.	Mar.	Apr.	May	Jun.	Jul.	Aug.	Sep.	Oct.	Nov.	Dec.	2024 Total, to Date	2023 Total, to Date
Bernalillo	8	12	14	11	10	8	11	12	12	6	9	5	118	114
Catron	-	-	1	-	-	-	-	-	-	-	-	-	1	2
Chaves	-	3	2	3	-	1	2	-	1	1	-	1	14	8
Cibola	1	-	-	1	-	1	1	-	-	-	-	-	4	16
Colfax	-	1	-	-	-	1	2	-	1	-	-	-	5	5
Curry	-	2	-	-	1	-	-	-	-	-	-	-	3	7
De Baca	1	-	-	-	-	-	-	-	-	-	-	-	1	-
Doña Ana	2	1	3	1	3	-	3	5	3	-	1	1	23	32
Eddy	1	2	2	2	1	-	1	3	2	1	4	1	20	18
Grant	-	1	1	1	-	-	-	-	-	2	2	-	7	6
Guadalupe	2	1	-	3	-	1	-	1	-	-	1	-	9	7
Harding	-	-	-	-	-	-	-	-	-	-	-	-	-	2
Hidalgo	-	1	-	-	-	-	-	-	1	-	-	-	2	2
Lea	2	1	2	2	2	6	1	3	6	2	3	1	31	18
Lincoln	1	-	-	-	-	2	-	-	2	2	-	-	7	10
Los Alamos	-	1	-	-	-	-	-	-	1	-	-	-	2	-
Luna	1	-	-	-	-	-	-	1	-	-	1	-	3	11
McKinley	1	-	1	2	1	-	1	3	1	-	1	1	12	29
Mora	-	-	-	-	-	1	1	-	-	-	-	-	2	6
Otero	-	-	2	1	1	1	2	1	1	-	1	1	11	13
Quay	-	-	1	-	-	1	-	1	-	1	-	-	4	5
Rio Arriba	1	1	1	1	1	1	1	-	1	-	1	1	10	15
Roosevelt	-	-	-	-	1	-	1	-	-	-	-	1	3	2
San Juan	1	3	2	2	1	-	4	1	3	3	-	1	21	20
San Miguel	1	-	-	1	1	1	2	-	2	-	1	-	9	9
Sandoval	-	2	1	1	-	1	1	3	1	-	1	-	11	13
Santa Fe	2	2	1	2	1	1	-	-	2	3	3	-	17	15
Sierra	-	-	-	-	-	1	2	-	1	-	-	-	4	5
Socorro	-	1	1	3	1	4	-	2	-	-	1	1	14	12
Taos	1	-	1	1	-	1	-	2	-	1	-	1	8	4
Torrance	-	1	-	1	1	-	1	2	3	3	-	2	14	15
Union	-	-	-	-	-	-	-	-	-	-	-	-	-	1
Valencia	-	1	-	3	1	-	-	1	1	1	1	2	11	14
Total	26	37	36	42	27	33	37	41	45	26	31	20	401	436

Fatalities by County Relating to Alcohol, Belt Use, and Under 21 BAC, 2024 to Date							
County	Alcohol-involved Fatalities ¹		Unbelted Fatalities		Under 21 (15-20) with a BAC ²		Total Fatalities
	Count	Percent ³	Count	Percent ³	Count	Percent ³	
Bernalillo	22	18.6%	37	31.4%	-	0.0%	118
Catron	-	0.0%	1	100.0%	-	0.0%	1
Chaves	3	21.4%	6	42.9%	-	0.0%	14
Cibola	2	50.0%	4	100.0%	-	0.0%	4
Colfax	-	0.0%	3	60.0%	-	0.0%	5
Curry	1	33.3%	-	0.0%	-	0.0%	3
De Baca	1	100.0%	1	100.0%	-	0.0%	1
Doña Ana	7	30.4%	8	34.8%	-	0.0%	23
Eddy	4	20.0%	10	50.0%	-	0.0%	20
Grant	1	14.3%	2	28.6%	-	0.0%	7
Guadalupe	1	11.1%	3	33.3%	-	0.0%	9
Harding	-	-	-	-	-	-	-
Hidalgo	-	0.0%	-	0.0%	-	0.0%	2
Lea	5	16.1%	13	41.9%	-	0.0%	31
Lincoln	2	28.6%	5	71.4%	-	0.0%	7
Los Alamos	-	0.0%	1	50.0%	-	0.0%	2
Luna	-	0.0%	1	33.3%	-	0.0%	3
McKinley	6	50.0%	6	50.0%	-	0.0%	12
Mora	1	50.0%	2	100.0%	-	0.0%	2
Otero	1	9.1%	5	45.5%	-	0.0%	11
Quay	2	50.0%	1	25.0%	-	0.0%	4
Rio Arriba	4	40.0%	4	40.0%	-	0.0%	10
Roosevelt	-	0.0%	-	0.0%	-	0.0%	3
San Juan	8	38.1%	11	52.4%	-	0.0%	21
San Miguel	4	44.4%	3	33.3%	-	0.0%	9
Sandoval	1	9.1%	5	45.5%	-	0.0%	11
Santa Fe	5	29.4%	5	29.4%	-	0.0%	17
Sierra	1	25.0%	2	50.0%	-	0.0%	4
Socorro	4	28.6%	7	50.0%	-	0.0%	14
Taos	2	25.0%	4	50.0%	-	0.0%	8
Torrance	4	28.6%	6	42.9%	-	0.0%	14
Union	-	-	-	-	-	-	-
Valencia	2	18.2%	2	18.2%	-	0.0%	11
Total	94	23.4%	158	39.4%	-	0.0%	401

¹ All fatalities in alcohol-involved crashes.

² Fatalities under 21 with a reported BAC (Blood Alcohol Content) above zero.

³ Percentage based on total fatalities in the county.

Fatalities by County and Vehicle Type, 2024 to Date

County	Cars	Pickup Trucks	Semi Trucks, Buses	Vans, SUVs, Utility Vehicles	ATV (4W)	Motorcyclists	Pedestrians	Pedalcyclists	RVs	Total Fatalities
Bernalillo	36	10	2	7	-	12	48	3	-	118
Catron	1	-	-	-	-	-	-	-	-	1
Chaves	3	3	1	2	-	1	4	-	-	14
Cibola	3	1	-	-	-	-	-	-	-	4
Colfax	2	3	-	-	-	-	-	-	-	5
Curry	-	-	-	-	-	-	3	-	-	3
De Baca	-	-	-	1	-	-	-	-	-	1
Doña Ana	4	3	-	5	1	4	5	1	-	23
Eddy	12	-	1	3	-	3	1	-	-	20
Grant	4	1	1	-	-	1	-	-	-	7
Guadalupe	3	-	1	3	-	1	1	-	-	9
Harding	-	-	-	-	-	-	-	-	-	-
Hidalgo	-	-	-	1	-	-	1	-	-	2
Lea	8	9	3	3	-	7	1	-	-	31
Lincoln	5	-	-	2	-	-	-	-	-	7
Los Alamos	1	-	-	1	-	-	-	-	-	2
Luna	1	-	1	-	-	-	-	1	-	3
McKinley	3	1	-	4	-	1	3	-	-	12
Mora	2	-	-	-	-	-	-	-	-	2
Otero	4	-	3	2	-	1	1	-	-	11
Quay	-	1	1	-	-	1	1	-	-	4
Rio Arriba	1	4	-	1	-	2	2	-	-	10
Roosevelt	1	-	-	-	-	1	1	-	-	3
San Juan	6	5	-	1	-	4	5	-	-	21
San Miguel	3	3	-	-	-	1	2	-	-	9
Sandoval	4	2	-	1	-	2	2	-	-	11
Santa Fe	5	3	-	1	-	-	6	2	-	17
Sierra	2	-	2	-	-	-	-	-	-	4
Socorro	2	4	1	4	-	1	1	-	1	14
Taos	3	1	-	3	-	1	-	-	-	8
Torrance	5	1	-	4	-	1	2	-	1	14
Union	-	-	-	-	-	-	-	-	-	-
Valencia	4	-	-	1	-	4	2	-	-	11
Total	128	55	17	50	1	49	92	7	2	401

Motorcycle ¹ Fatalities by County and Month, 2024 to Date														
County	Jan.	Feb.	Mar.	Apr.	May	Jun.	Jul.	Aug.	Sep.	Oct.	Nov.	Dec.	2024 Total, to Date	2023 Total, to Date
Bernalillo	-	3	3	1	-	1	2	-	1	-	1	-	12	14
Catron	-	-	-	-	-	-	-	-	-	-	-	-	-	1
Chaves	-	-	-	1	-	-	-	-	-	-	-	-	1	-
Cibola	-	-	-	-	-	-	-	-	-	-	-	-	-	1
Colfax	-	-	-	-	-	-	-	-	-	-	-	-	-	-
Curry	-	-	-	-	-	-	-	-	-	-	-	-	-	1
De Baca	-	-	-	-	-	-	-	-	-	-	-	-	-	-
Doña Ana	-	-	-	-	2	-	-	2	-	-	-	-	4	4
Eddy	-	1	-	-	1	-	-	1	-	-	-	-	3	4
Grant	-	-	1	-	-	-	-	-	-	-	-	-	1	-
Guadalupe	-	-	-	-	-	-	-	1	-	-	-	-	1	1
Harding	-	-	-	-	-	-	-	-	-	-	-	-	-	-
Hidalgo	-	-	-	-	-	-	-	-	-	-	-	-	-	-
Lea	-	-	1	1	-	1	1	-	1	1	-	1	7	1
Lincoln	-	-	-	-	-	-	-	-	-	-	-	-	-	2
Los Alamos	-	-	-	-	-	-	-	-	-	-	-	-	-	-
Luna	-	-	-	-	-	-	-	-	-	-	-	-	-	-
McKinley	-	-	-	-	-	-	-	-	1	-	-	-	1	-
Mora	-	-	-	-	-	-	-	-	-	-	-	-	-	1
Otero	-	-	-	-	-	-	1	-	-	-	-	-	1	4
Quay	-	-	-	-	-	1	-	-	-	-	-	-	1	-
Rio Arriba	-	-	-	1	-	1	-	-	-	-	-	-	2	2
Roosevelt	-	-	-	-	1	-	-	-	-	-	-	-	1	-
San Juan	-	-	-	-	1	-	1	1	1	-	-	-	4	4
San Miguel	-	-	-	-	1	-	-	-	-	-	-	-	1	2
Sandoval	-	-	1	1	-	-	-	-	-	-	-	-	2	2
Santa Fe	-	-	-	-	-	-	-	-	-	-	-	-	-	2
Sierra	-	-	-	-	-	-	-	-	-	-	-	-	-	-
Socorro	-	-	-	-	-	-	-	-	-	-	1	-	1	1
Taos	-	-	-	-	-	-	-	1	-	-	-	-	1	1
Torrance	-	-	-	-	-	-	-	1	-	-	-	-	1	-
Union	-	-	-	-	-	-	-	-	-	-	-	-	-	-
Valencia	-	-	-	2	-	-	-	-	-	1	1	-	4	7
Total	-	4	6	7	6	4	5	7	4	2	3	1	49	55

¹ The term motorcycle includes motorized scooters and mopeds, but excludes 4W/ATVs.

Motorcycle ¹ Fatalities by County Relating to Alcohol, Helmet Use, and Age, 2024 to Date							
County	Alcohol-involved Fatalities ²		Unhelmeted Fatalities		Fatalities Under Age 30 (Ages 15-29)		Total Fatalities
	Count	Percent ³	Count	Percent ³	Count	Percent ³	
Bernalillo	4	33.3%	10	83.3%	3	25.0%	12
Catron	-	-	-	-	-	-	-
Chaves	-	0.0%	1	100.0%	-	0.0%	1
Cibola	-	-	-	-	-	-	-
Colfax	-	-	-	-	-	-	-
Curry	-	-	-	-	-	-	-
De Baca	-	-	-	-	-	-	-
Doña Ana	1	25.0%	2	50.0%	-	0.0%	4
Eddy	-	0.0%	1	33.3%	-	0.0%	3
Grant	-	0.0%	-	0.0%	-	0.0%	1
Guadalupe	-	0.0%	1	100.0%	-	0.0%	1
Harding	-	-	-	-	-	-	-
Hidalgo	-	-	-	-	-	-	-
Lea	-	0.0%	4	57.1%	-	0.0%	7
Lincoln	-	-	-	-	-	-	-
Los Alamos	-	-	-	-	-	-	-
Luna	-	-	-	-	-	-	-
McKinley	-	0.0%	-	0.0%	-	0.0%	1
Mora	-	-	-	-	-	-	-
Otero	-	0.0%	1	100.0%	-	0.0%	1
Quay	1	100.0%	1	100.0%	-	0.0%	1
Rio Arriba	-	0.0%	1	50.0%	-	0.0%	2
Roosevelt	-	0.0%	1	100.0%	-	0.0%	1
San Juan	-	0.0%	3	75.0%	-	0.0%	4
San Miguel	-	0.0%	1	100.0%	-	0.0%	1
Sandoval	-	0.0%	1	50.0%	-	0.0%	2
Santa Fe	-	-	-	-	-	-	-
Sierra	-	-	-	-	-	-	-
Socorro	-	0.0%	1	100.0%	-	0.0%	1
Taos	-	0.0%	1	100.0%	-	0.0%	1
Torrance	-	0.0%	-	0.0%	-	0.0%	1
Union	-	-	-	-	-	-	-
Valencia	-	0.0%	3	75.0%	-	0.0%	4
Total	6	0.0%	33	0.0%	-	0.0%	49

¹ The term motorcycle includes motorized scooters and mopeds, but excludes 4W/ATVs.

² All motorcycle fatalities in alcohol-involved crashes.

³ Percentage based on total motorcycle fatalities in the county.

Fatalities by Maintenance District and Month, 2024 to Date													
District	Jan.	Feb.	Mar.	Apr.	May	Jun.	Jul.	Aug.	Sep.	Oct.	Nov.	Dec.	Total
District 1	3	4	5	5	4	5	5	8	5	2	5	2	53
District 2	5	8	8	8	6	10	7	7	12	6	8	5	90
District 3	8	14	15	15	11	9	12	16	14	7	11	7	139
District 4	3	2	1	4	1	5	5	2	3	1	2	-	29
District 5	5	8	5	7	4	3	6	5	10	10	4	5	72
District 6	2	1	2	3	1	1	2	3	1	-	1	1	18
Total	26	37	36	42	27	33	37	41	45	26	31	20	401

Fatalities by Maintenance District Relating to Alcohol, Belt Use, and Under 21 BAC, 2024 to Date							
District	Alcohol-involved Fatalities ¹		Unbelted Fatalities		Under 21 (15-20) Fatalities with a BAC ²		Total Fatalities
	Count	Percent ³	Count	Percent ³	Count	Percent ³	
District 1	13	24.5%	20	37.7%	-	0.0%	53
District 2	17	18.9%	40	44.4%	-	0.0%	90
District 3	25	18.0%	43	30.9%	-	0.0%	139
District 4	8	27.6%	12	41.4%	-	0.0%	29
District 5	23	31.9%	31	43.1%	-	0.0%	72
District 6	8	44.4%	12	66.7%	-	0.0%	18
Total	94	23.4%	158	39.4%	-	0.0%	401

¹ All fatalities in alcohol-involved crashes.

² Fatalities under 21 with a reported BAC (Blood Alcohol Content) above zero.

³ Percentage based on total fatalities in the district