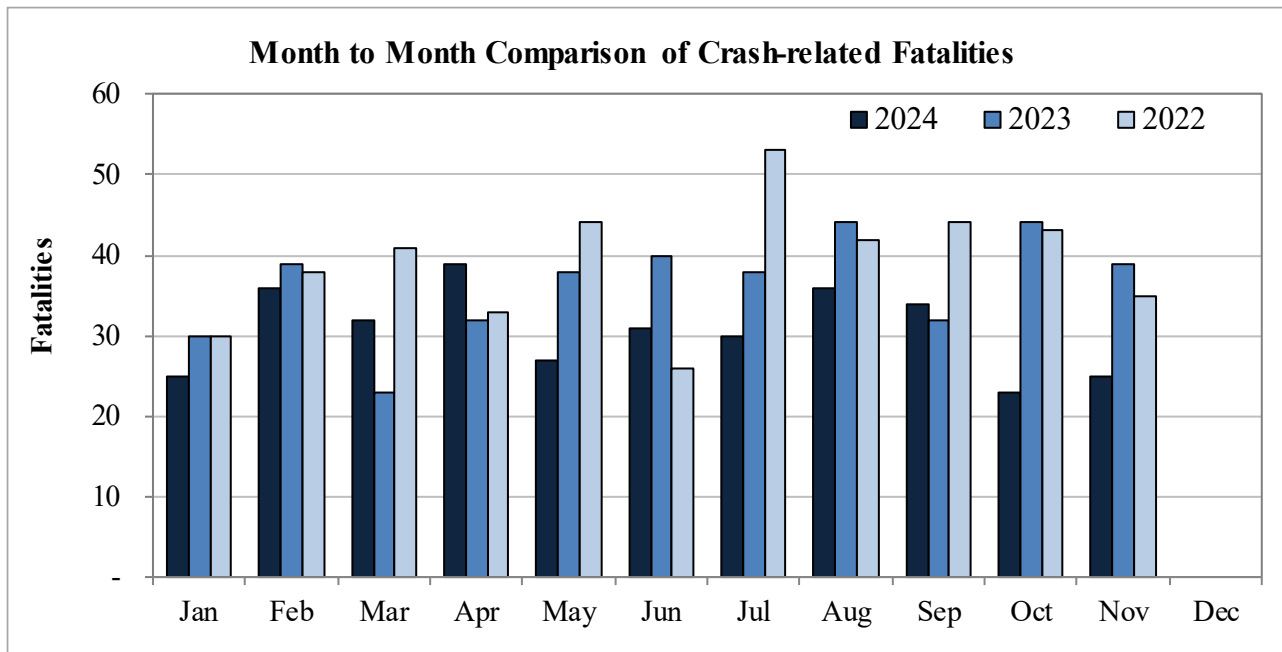


New Mexico Monthly Traffic Fatality Report, 2024

Produced for the New Mexico Department of Transportation, Traffic Safety Division, Traffic Records Bureau,
Under Contract No. 6380 by UNM Geospatial and Population Studies, Traffic Research Unit (TRU)

Fatalities by Month 2024, 2023, 2022 Year to Date			
Month	2024	2023	2022
January	25	30	30
February	36	39	38
March	32	23	41
April	39	32	33
May	27	38	44
June	31	40	26
July	30	38	53
August	36	44	42
September	34	32	44
October	23	44	43
November	25	39	35
December	-	-	-
Total	338	399	429



Fatalities by Vehicle Type, 2024 to Date										
Month in 2024	Cars	Pickup Trucks	Semi Trucks, Buses	Vans, SUVs, Utility Vehicles	ATV (4W)	Motorcyclists	Pedestrians	Pedalcyclists	Vehicle Type Unknown or Other	Total Fatalities
January	7	4	2	4	-	-	8	-	-	25
February	10	9	-	3	-	4	9	1	-	36
March	7	3	3	5	-	6	8	-	-	32
April	17	1	-	6	-	7	6	1	1	39
May	7	-	-	1	-	6	11	2	-	27
June	12	8	1	3	-	4	2	1	-	31
July	10	4	3	3	-	4	6	-	-	30
August	8	4	1	5	1	8	9	-	-	36
September	15	5	2	5	-	1	6	-	-	34
October	11	2	1	2	-	1	5	-	1	23
November	10	2	2	1	-	2	8	-	-	25
December	-	-	-	-	-	-	-	-	-	-
Total	114	42	15	38	1	43	78	5	2	338

Fatalities by Alcohol Involvement ¹ , 2024 to Date				
Month in 2024	Alcohol-involved ¹	Not Alcohol-involved	Alcohol Unknown	Total Fatalities
January	10	15	-	25
February	8	28	-	36
March	12	20	-	32
April	7	32	-	39
May	8	19	-	27
June	10	21	-	31
July	8	22	-	30
August	5	31	-	36
September	6	28	-	34
October	2	21	-	23
November	4	21	-	25
December	-	-	-	-
Total	80	258	-	338

Alcohol-involved Fatalities ¹ , 2024 to Date			
Month	2024	2023	2022
January	10	8	12
February	8	14	16
March	12	9	20
April	7	14	13
May	8	17	15
June	10	14	9
July	8	13	16
August	5	19	17
September	6	9	14
October	2	13	17
November	4	12	9
December	-	-	-
Total	80	142	158

¹ All fatalities in alcohol-involved crashes.

¹ All fatalities in alcohol-involved crashes.

Fatalities Under 21, 2024 to Date	
Age	Fatalities
1	2
2	-
3	1
4	1
5	-
6	-
7	-
8	-
9	1
10	-
11	-
12	-
13	1
14	1
15	-
16	4
17	3
18	5
19	10
20	7
Total	36

Month in 2024	Total Fatalities, 2024 to Date	Alcohol-involved Fatalities ¹ , 2024 to Date			
		Motorcyclist Fatalities	Percent Motorcyclist Fatalities	Pedestrian Fatalities	Percent Pedestrian Fatalities
January	25	-	0.0%	5	20.0%
February	36	-	0.0%	2	5.6%
March	32	2	6.3%	4	12.5%
April	39	-	0.0%	-	0.0%
May	27	1	3.7%	2	7.4%
June	31	1	3.2%	-	0.0%
July	30	1	3.3%	4	13.3%
August	36	-	0.0%	-	0.0%
September	34	-	0.0%	-	0.0%
October	23	-	0.0%	-	0.0%
November	25	-	0.0%	1	4.0%
December	-	-	-	-	-
Total	338	5	1.5%	18	5.3%

¹ All fatalities in alcohol-involved crashes.

Alcohol-involved Fatalities ¹ , 2024 to Date		
Alcohol-involved	80	24%
Not Alcohol-involved	258	76%
Alcohol Unknown	-	-
Total	338	100%

¹ All fatalities in alcohol-involved crashes.

Motorcyclist Helmet Usage ¹ , 2024 to Date	
Helmet Usage	Fatalities
Yes	13
No	30
Unknown	-
Total	43

¹ Excludes 4W/ATV.

Fatalities by Vehicle ¹ Occupant Seat Belt Usage, 2024 to Date				
Restraint	Yes	No	Unknown	Total
Seat Belt	65	128	1	194

¹ Total vehicle occupant fatalities. Excludes motorcyclist, 4W/ATV, semi truck, pedestrian and pedalcyclist fatalities.

Senior (65+) Fatalities, 2024 to Date	
Year	Fatalities
2024	54
2023	65
2022	63

Fatalities by Residency and Location, 2024 to Date				
Location	New Mexico Resident	Non-Resident	Unknown Residency	Total
Rural	124	62	4	190
Urban	128	14	5	147
Unknown	1	-	-	1
Total	253	76	9	338

Month to Month Comparison of Fatalities by Alcohol Involvement, 2024 to Date												
Month	2024 Fatalities				2023 Fatalities				2022 Fatalities			
	Alcohol-involved ¹			Total	Alcohol-involved ¹			Total	Alcohol-involved ¹			Total
	Yes	No	Unk		Yes	No	Unk		Yes	No	Unk	
January	10	15	-	25	8	22	-	30	12	18	-	30
February	8	28	-	36	14	25	-	39	16	22	-	38
March	12	20	-	32	9	14	-	23	20	21	-	41
April	7	32	-	39	14	18	-	32	13	20	-	33
May	8	19	-	27	17	21	-	38	15	29	-	44
June	10	21	-	31	14	26	-	40	9	17	-	26
July	8	22	-	30	13	25	-	38	16	37	-	53
August	5	31	-	36	19	25	-	44	17	25	-	42
September	6	28	-	34	9	23	-	32	14	30	-	44
October	2	21	-	23	13	31	-	44	17	26	-	43
November	4	21	-	25	12	27	-	39	9	26	-	35
December	-	-	-	-	-	-	-	-	-	-	-	-
Total	80	258	-	338	142	257	-	399	158	271	-	429

¹ Identifies whether the fatality resulted from an alcohol-involved crash.

Month to Month Comparison of Fatalities by Seat Belt Usage, 2024 to Date												
Month	2024 Fatalities				2023 Fatalities				2022 Fatalities			
	Seat Belt ¹			Total ²	Seat Belt ¹			Total ²	Seat Belt ¹			Total ²
	Yes	No	Unk		Yes	No	Unk		Yes	No	Unk	
January	6	9	-	15	8	11	-	19	4	12	-	16
February	7	15	-	22	6	11	-	17	9	13	-	22
March	4	11	-	15	5	4	1	10	12	15	-	27
April	6	18	-	24	8	15	-	23	11	15	-	26
May	-	8	-	8	3	18	-	21	5	21	-	26
June	6	17	-	23	8	15	-	23	7	7	-	14
July	6	11	-	17	8	10	-	18	14	26	-	40
August	6	10	1	17	11	13	-	24	6	19	-	25
September	8	17	-	25	1	10	-	11	10	15	-	25
October	11	4	-	15	7	16	-	23	8	13	-	21
November	5	8	-	13	9	13	-	22	11	9	-	20
December	-	-	-	-	-	-	-	-	-	-	-	-
Total	65	128	1	194	74	136	1	211	97	165	-	262

¹ Identifies whether a vehicle occupant was belted (Yes), unbelted (No), or belt usage was not reported (Unk).

² Total vehicle occupant fatalities. Excludes motorcyclist, 4W/ATV, semi truck, pedestrian and pedalcyclist fatalities.

Fatalities by County and Month, 2024 To Date														
County	Jan.	Feb.	Mar.	Apr.	May	Jun.	Jul.	Aug.	Sep.	Oct.	Nov.	Dec.	2024 Total, to Date	2023 Total, to Date
Bernalillo	8	12	13	9	10	7	9	12	9	5	7	-	101	107
Catron	-	-	1	-	-	-	-	-	-	-	-	-	1	2
Chaves	-	3	2	3	-	1	2	-	1	1	-	-	13	8
Cibola	1	-	-	1	-	1	1	-	-	-	-	-	4	16
Colfax	-	1	-	-	-	1	2	-	-	-	-	-	4	4
Curry	-	2	-	-	1	-	-	-	-	-	-	-	3	5
De Baca	1	-	-	-	-	-	-	-	-	-	-	-	1	-
Doña Ana	2	1	3	1	3	-	3	5	1	-	1	-	20	29
Eddy	1	2	1	2	1	-	-	2	2	1	3	-	15	18
Grant	-	1	1	1	-	-	-	-	-	2	1	-	6	6
Guadalupe	2	1	-	3	-	1	-	1	-	-	1	-	9	5
Harding	-	-	-	-	-	-	-	-	-	-	-	-	-	2
Hidalgo	-	1	-	-	-	-	-	-	1	-	-	-	2	2
Lea	2	1	2	2	2	6	-	2	5	2	3	-	27	15
Lincoln	1	-	-	-	-	2	-	-	2	2	-	-	7	9
Los Alamos	-	1	-	-	-	-	-	-	1	-	-	-	2	-
Luna	1	-	-	-	-	-	-	1	-	-	1	-	3	11
McKinley	1	-	1	2	1	-	1	1	-	-	1	-	8	25
Mora	-	-	-	-	-	1	1	-	-	-	-	-	2	6
Otero	-	-	1	1	1	1	2	-	-	-	1	-	7	12
Quay	-	-	1	-	-	1	-	1	-	1	-	-	4	4
Rio Arriba	1	1	1	1	1	1	-	-	1	-	1	-	8	10
Roosevelt	-	-	-	-	1	-	1	-	-	-	-	-	2	2
San Juan	1	3	2	2	1	-	4	1	2	2	-	-	18	18
San Miguel	1	-	-	1	1	1	1	-	2	-	1	-	8	8
Sandoval	-	1	1	1	-	1	-	3	1	-	-	-	8	12
Santa Fe	1	2	1	2	1	1	-	-	2	3	3	-	16	15
Sierra	-	-	-	-	-	1	2	-	1	-	-	-	4	5
Socorro	-	1	-	3	1	3	-	2	-	-	1	-	11	12
Taos	1	-	1	1	-	1	-	2	-	1	-	-	7	3
Torrance	-	1	-	1	1	-	1	2	3	3	-	-	12	14
Union	-	-	-	-	-	-	-	-	-	-	-	-	-	-
Valencia	-	1	-	2	1	-	-	1	-	-	-	-	5	14
Total	25	36	32	39	27	31	30	36	34	23	25	-	338	399

Fatalities by County Relating to Alcohol, Belt Use, and Under 21 BAC, 2024 to Date							
County	Alcohol-involved Fatalities ¹		Unbelted Fatalities		Under 21 (15-20) with a BAC ²		Total Fatalities
	Count	Percent ³	Count	Percent ³	Count	Percent ³	
Bernalillo	21	20.8%	29	28.7%	-	0.0%	101
Catron	-	0.0%	1	100.0%	-	0.0%	1
Chaves	3	23.1%	5	38.5%	-	0.0%	13
Cibola	2	50.0%	4	100.0%	-	0.0%	4
Colfax	-	0.0%	2	50.0%	-	0.0%	4
Curry	1	33.3%	-	0.0%	-	0.0%	3
De Baca	1	100.0%	1	100.0%	-	0.0%	1
Doña Ana	7	35.0%	7	35.0%	-	0.0%	20
Eddy	3	20.0%	7	46.7%	-	0.0%	15
Grant	1	16.7%	1	16.7%	-	0.0%	6
Guadalupe	1	11.1%	3	33.3%	-	0.0%	9
Harding	-	-	-	-	-	-	-
Hidalgo	-	0.0%	-	0.0%	-	0.0%	2
Lea	3	11.1%	12	44.4%	-	0.0%	27
Lincoln	2	28.6%	3	42.9%	-	0.0%	7
Los Alamos	-	0.0%	1	50.0%	-	0.0%	2
Luna	-	0.0%	1	33.3%	-	0.0%	3
McKinley	2	25.0%	5	62.5%	-	0.0%	8
Mora	1	50.0%	2	100.0%	-	0.0%	2
Otero	1	14.3%	3	42.9%	-	0.0%	7
Quay	2	50.0%	1	25.0%	-	0.0%	4
Rio Arriba	3	37.5%	2	25.0%	-	0.0%	8
Roosevelt	-	0.0%	-	0.0%	-	0.0%	2
San Juan	7	38.9%	10	55.6%	-	0.0%	18
San Miguel	4	50.0%	2	25.0%	-	0.0%	8
Sandoval	-	0.0%	3	37.5%	-	0.0%	8
Santa Fe	5	31.3%	5	31.3%	-	0.0%	16
Sierra	1	25.0%	2	50.0%	-	0.0%	4
Socorro	4	36.4%	6	54.5%	-	0.0%	11
Taos	1	14.3%	4	57.1%	-	0.0%	7
Torrance	4	33.3%	4	33.3%	-	0.0%	12
Union	-	-	-	-	-	-	-
Valencia	-	0.0%	2	40.0%	-	0.0%	5
Total	80	23.7%	128	37.9%	-	0.0%	338

¹ All fatalities in alcohol-involved crashes.

² Fatalities under 21 with a reported BAC (Blood Alcohol Content) above zero.

³ Percentage based on total fatalities in the county.

Fatalities by County and Vehicle Type, 2024 to Date										
County	Cars	Pickup Trucks	Semi Trucks, Buses	Vans, SUVs, Utility Vehicles	ATV (4W)	Motorcyclists	Pedestrians	Pedalcyclists	Vehicle Type Unknown or Other	Total Fatalities
Bernalillo	33	4	2	7	-	12	40	3	-	101
Catron	1	-	-	-	-	-	-	-	-	1
Chaves	3	3	1	1	-	1	4	-	-	13
Cibola	3	1	-	-	-	-	-	-	-	4
Colfax	2	2	-	-	-	-	-	-	-	4
Curry	-	-	-	-	-	-	3	-	-	3
De Baca	-	-	-	1	-	-	-	-	-	1
Doña Ana	3	3	-	5	1	4	3	1	-	20
Eddy	9	-	-	1	-	4	1	-	-	15
Grant	3	1	1	-	-	1	-	-	-	6
Guadalupe	4	-	1	2	-	1	1	-	-	9
Harding	-	-	-	-	-	-	-	-	-	-
Hidalgo	-	-	-	1	-	-	1	-	-	2
Lea	8	8	3	3	-	4	1	-	-	27
Lincoln	6	-	-	1	-	-	-	-	-	7
Los Alamos	1	-	-	1	-	-	-	-	-	2
Luna	1	-	1	-	-	-	1	-	-	3
McKinley	1	1	-	3	-	-	3	-	-	8
Mora	2	-	-	-	-	-	-	-	-	2
Otero	4	-	2	-	-	1	-	-	-	7
Quay	-	1	1	-	-	1	1	-	-	4
Rio Arriba	1	2	-	1	-	2	2	-	-	8
Roosevelt	-	-	-	-	-	1	1	-	-	2
San Juan	5	5	-	1	-	3	4	-	-	18
San Miguel	3	2	-	-	-	1	2	-	-	8
Sandoval	3	1	-	1	-	2	1	-	-	8
Santa Fe	5	3	-	1	-	-	6	1	-	16
Sierra	2	-	2	-	-	-	-	-	-	4
Socorro	2	3	1	3	-	1	1	-	-	11
Taos	3	1	-	2	-	1	-	-	-	7
Torrance	3	1	-	3	-	1	2	-	2	12
Union	-	-	-	-	-	-	-	-	-	-
Valencia	3	-	-	-	-	2	-	-	-	5
Total	114	42	15	38	1	43	78	5	2	338

Motorcycle ¹ Fatalities by County and Month, 2024 to Date														
County	Jan.	Feb.	Mar.	Apr.	May	Jun.	Jul.	Aug.	Sep.	Oct.	Nov.	Dec.	2024 Total, to Date	2023 Total, to Date
Bernalillo	-	3	3	1	-	1	2	-	1	-	1	-	12	14
Catron	-	-	-	-	-	-	-	-	-	-	-	-	-	1
Chaves	-	-	-	1	-	-	-	-	-	-	-	-	1	-
Cibola	-	-	-	-	-	-	-	-	-	-	-	-	-	1
Colfax	-	-	-	-	-	-	-	-	-	-	-	-	-	-
Curry	-	-	-	-	-	-	-	-	-	-	-	-	-	1
De Baca	-	-	-	-	-	-	-	-	-	-	-	-	-	-
Doña Ana	-	-	-	-	2	-	-	2	-	-	-	-	4	3
Eddy	-	1	-	-	1	-	-	2	-	-	-	-	4	4
Grant	-	-	1	-	-	-	-	-	-	-	-	-	1	-
Guadalupe	-	-	-	-	-	-	-	1	-	-	-	-	1	1
Harding	-	-	-	-	-	-	-	-	-	-	-	-	-	-
Hidalgo	-	-	-	-	-	-	-	-	-	-	-	-	-	-
Lea	-	-	1	1	-	1	-	-	-	1	-	-	4	-
Lincoln	-	-	-	-	-	-	-	-	-	-	-	-	-	2
Los Alamos	-	-	-	-	-	-	-	-	-	-	-	-	-	-
Luna	-	-	-	-	-	-	-	-	-	-	-	-	-	-
McKinley	-	-	-	-	-	-	-	-	-	-	-	-	-	-
Mora	-	-	-	-	-	-	-	-	-	-	-	-	-	1
Otero	-	-	-	-	-	-	1	-	-	-	-	-	1	4
Quay	-	-	-	-	-	1	-	-	-	-	-	-	1	-
Rio Arriba	-	-	-	1	-	1	-	-	-	-	-	-	2	2
Roosevelt	-	-	-	-	1	-	-	-	-	-	-	-	1	-
San Juan	-	-	-	-	1	-	1	1	-	-	-	-	3	4
San Miguel	-	-	-	-	1	-	-	-	-	-	-	-	1	2
Sandoval	-	-	1	1	-	-	-	-	-	-	-	-	2	2
Santa Fe	-	-	-	-	-	-	-	-	-	-	-	-	-	2
Sierra	-	-	-	-	-	-	-	-	-	-	-	-	-	-
Socorro	-	-	-	-	-	-	-	-	-	-	1	-	1	1
Taos	-	-	-	-	-	-	-	1	-	-	-	-	1	1
Torrance	-	-	-	-	-	-	-	1	-	-	-	-	1	-
Union	-	-	-	-	-	-	-	-	-	-	-	-	-	-
Valencia	-	-	-	2	-	-	-	-	-	-	-	-	2	7
Total	-	4	6	7	6	4	4	8	1	1	2	-	43	53

¹ The term motorcycle includes motorized scooters and mopeds, but excludes 4W/ATVs.

Motorcycle ¹ Fatalities by County Relating to Alcohol, Helmet Use, and Age, 2024 to Date							
County	Alcohol-involved Fatalities ²		Unhelmeted Fatalities		Fatalities Under Age 30 (Ages 15-29)		Total Fatalities
	Count	Percent ³	Count	Percent ³	Count	Percent ³	
Bernalillo	4	33.3%	10	83.3%	3	25.0%	12
Catron	-	-	-	-	-	-	-
Chaves	-	0.0%	1	100.0%	-	0.0%	1
Cibola	-	-	-	-	-	-	-
Colfax	-	-	-	-	-	-	-
Curry	-	-	-	-	-	-	-
De Baca	-	-	-	-	-	-	-
Doña Ana	1	25.0%	2	50.0%	-	0.0%	4
Eddy	-	0.0%	2	50.0%	-	0.0%	4
Grant	-	0.0%	-	0.0%	-	0.0%	1
Guadalupe	-	0.0%	1	100.0%	-	0.0%	1
Harding	-	-	-	-	-	-	-
Hidalgo	-	-	-	-	-	-	-
Lea	-	0.0%	2	50.0%	-	0.0%	4
Lincoln	-	-	-	-	-	-	-
Los Alamos	-	-	-	-	-	-	-
Luna	-	-	-	-	-	-	-
McKinley	-	-	-	-	-	-	-
Mora	-	-	-	-	-	-	-
Otero	-	0.0%	1	100.0%	-	0.0%	1
Quay	1	100.0%	1	100.0%	-	0.0%	1
Rio Arriba	-	0.0%	1	50.0%	-	0.0%	2
Roosevelt	-	0.0%	1	100.0%	-	0.0%	1
San Juan	-	0.0%	2	66.7%	-	0.0%	3
San Miguel	-	0.0%	1	100.0%	-	0.0%	1
Sandoval	-	0.0%	1	50.0%	-	0.0%	2
Santa Fe	-	-	-	-	-	-	-
Sierra	-	-	-	-	-	-	-
Socorro	-	0.0%	1	100.0%	-	0.0%	1
Taos	-	0.0%	1	100.0%	-	0.0%	1
Torrance	-	0.0%	-	0.0%	-	0.0%	1
Union	-	-	-	-	-	-	-
Valencia	-	0.0%	2	100.0%	-	0.0%	2
Total	6	0.0%	30	0.0%	-	0.0%	43

¹ The term motorcycle includes motorized scooters and mopeds, but excludes 4W/ATVs.

² All motorcycle fatalities in alcohol-involved crashes.

³ Percentage based on total motorcycle fatalities in the county.

Fatalities by Maintenance District and Month, 2024 to Date													
District	Jan.	Feb.	Mar.	Apr.	May	Jun.	Jul.	Aug.	Sep.	Oct.	Nov.	Dec.	Total
District 1	3	4	4	5	4	4	5	8	3	2	4	-	46
District 2	5	8	6	8	6	10	5	4	10	6	7	-	75
District 3	8	14	14	12	11	8	9	16	10	5	7	-	114
District 4	3	2	1	4	1	5	4	2	2	1	2	-	27
District 5	4	8	5	7	4	3	5	5	9	9	4	-	63
District 6	2	-	2	3	1	1	2	1	-	-	1	-	13
Total	25	36	32	39	27	31	30	36	34	23	25	-	338

Fatalities by Maintenance District Relating to Alcohol, Belt Use, and Under 21 BAC, 2024 to Date							
District	Alcohol-involved Fatalities ¹		Unbelted Fatalities		Under 21 (15-20) Fatalities with a BAC ²		Total Fatalities
	Count	Percent ³	Count	Percent ³	Count	Percent ³	
District 1	13	28.3%	17	37.0%	-	0.0%	46
District 2	14	18.7%	31	41.3%	-	0.0%	75
District 3	21	18.4%	34	29.8%	-	0.0%	114
District 4	8	29.6%	10	37.0%	-	0.0%	27
District 5	20	31.7%	26	41.3%	-	0.0%	63
District 6	4	30.8%	10	76.9%	-	0.0%	13
Total	80	23.7%	128	37.9%	-	0.0%	338

¹ All fatalities in alcohol-involved crashes.

² Fatalities under 21 with a reported BAC (Blood Alcohol Content) above zero.

³ Percentage based on total fatalities in the district