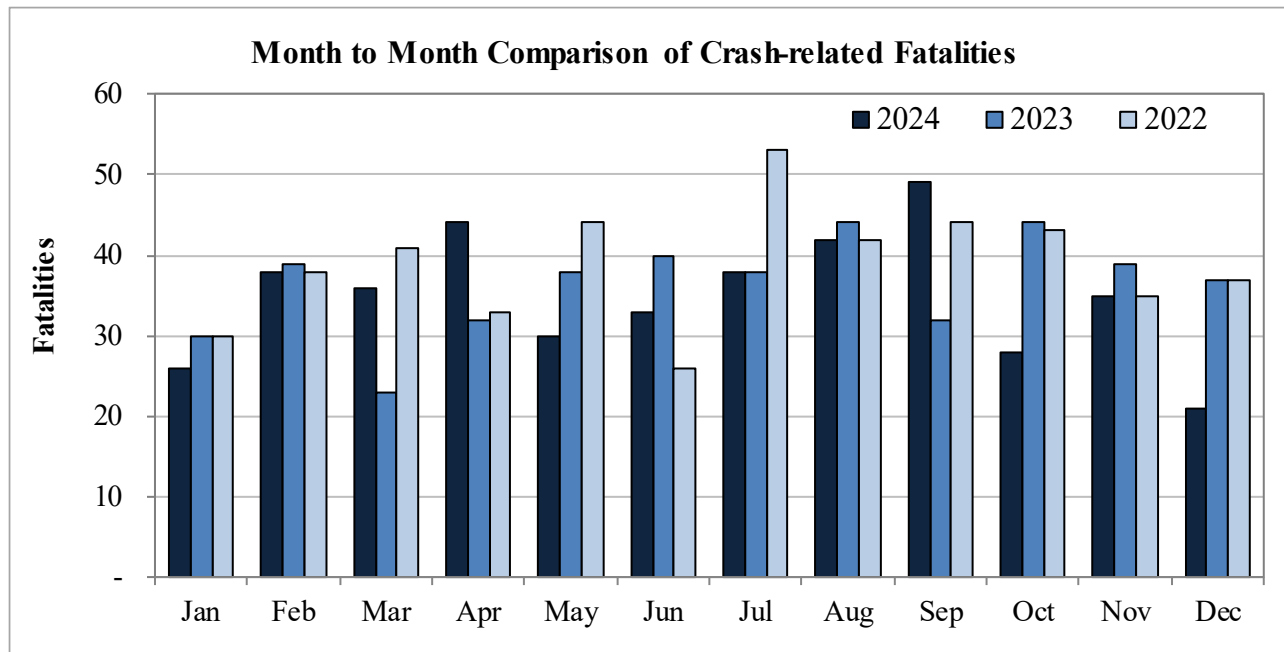


## New Mexico Monthly Traffic Fatality Report, 2024

Produced for the New Mexico Department of Transportation, Traffic Safety Division, Traffic Records Bureau,  
Under Contract No. 6380 by UNM Geospatial and Population Studies, Traffic Research Unit (TRU)

Fatalities by Month 2024, 2023, 2022			
Month	2024	2023	2022
January	26	30	30
February	38	39	38
March	36	23	41
April	44	32	33
May	30	38	44
June	33	40	26
July	38	38	53
August	42	44	42
September	49	32	44
October	28	44	43
November	35	39	35
December	21	37	37
<b>Total</b>	<b>420</b>	<b>436</b>	<b>466</b>



Fatalities by Vehicle Type, 2024										
Month in 2024	Cars	Pickup Trucks	Semi Trucks, Buses	Vans, SUVs, Utility Vehicles	ATV (4W)	Motorcyclists	Pedestrians	Pedalcyclists	RVs	Total Fatalities
January	7	4	2	4	-	-	8	1	-	26
February	11	10	-	3	-	4	9	1	-	38
March	10	3	3	5	-	6	8	-	1	36
April	17	2	-	6	1	8	8	1	1	44
May	7	-	-	3	-	7	11	2	-	30
June	12	8	1	4	-	4	3	1	-	33
July	11	8	3	4	-	5	7	-	-	38
August	11	6	1	6	1	7	10	-	-	42
September	18	8	2	7	-	4	10	-	-	49
October	9	5	1	4	-	2	7	-	-	28
November	11	2	2	6	-	3	10	1	-	35
December	7	6	1	4	-	1	2	-	-	21
<b>Total</b>	<b>131</b>	<b>62</b>	<b>16</b>	<b>56</b>	<b>2</b>	<b>51</b>	<b>93</b>	<b>7</b>	<b>2</b>	<b>420</b>

Fatalities by Alcohol Involvement <sup>1</sup> , 2024				
Month in 2024	Alcohol-involved <sup>1</sup>	Not Alcohol-involved	Alcohol Unknown	Total Fatalities
January	10	16	-	26
February	9	29	-	38
March	12	24	-	36
April	7	37	-	44
May	8	22	-	30
June	10	23	-	33
July	11	27	-	38
August	10	32	-	42
September	8	41	-	49
October	7	21	-	28
November	6	29	-	35
December	3	18	-	21
<b>Total</b>	<b>101</b>	<b>319</b>	<b>-</b>	<b>420</b>

<sup>1</sup> All fatalities in alcohol-involved crashes.

Alcohol-involved Fatalities <sup>1</sup> , 2024			
Month	2024	2023	2022
January	10	8	12
February	9	14	16
March	12	9	20
April	7	14	13
May	8	17	15
June	10	14	9
July	11	13	16
August	10	19	17
September	8	9	14
October	7	13	17
November	6	12	9
December	3	16	18
<b>Total</b>	<b>101</b>	<b>158</b>	<b>176</b>

<sup>1</sup> All fatalities in alcohol-involved crashes.

Fatalities Under 21, 2024	
Age	Fatalities
1	4
2	-
3	1
4	1
5	-
6	1
7	-
8	1
9	1
10	-
11	-
12	-
13	1
14	1
15	2
16	5
17	5
18	5
19	12
20	8
<b>Total</b>	<b>48</b>

Month in 2024	Total Fatalities, 2024	Alcohol-involved Fatalities <sup>1</sup> , 2024			
		Motorcyclist Fatalities	Percent Motorcyclist Fatalities	Pedestrian Fatalities	Percent Pedestrian Fatalities
January	26	-	0.0%	5	19.2%
February	38	-	0.0%	2	5.3%
March	36	2	5.6%	4	11.1%
April	44	-	0.0%	-	0.0%
May	30	1	3.3%	2	6.7%
June	33	1	3.0%	-	0.0%
July	38	1	2.6%	4	10.5%
August	42	1	2.4%	-	0.0%
September	49	-	0.0%	1	2.0%
October	28	-	0.0%	1	3.6%
November	35	-	0.0%	2	5.7%
December	21	-	0.0%	-	0.0%
<b>Total</b>	<b>420</b>	<b>6</b>	<b>1.4%</b>	<b>21</b>	<b>5.0%</b>

<sup>1</sup> All fatalities in alcohol-involved crashes.

Alcohol-involved Fatalities <sup>1</sup> , 2024		
Alcohol-involved	101	24%
Not Alcohol-involved	319	76%
Alcohol Unknown	-	-
<b>Total</b>	<b>420</b>	<b>100%</b>

<sup>1</sup> All fatalities in alcohol-involved crashes.

Motorcyclist Helmet Usage <sup>1</sup> , 2024	
Helmet Usage	Fatalities
Yes	16
No	35
Unknown	-
<b>Total</b>	<b>51</b>

<sup>1</sup> Excludes 4W/ATV.

Fatalities by Vehicle <sup>1</sup> Occupant Seat Belt Usage, 2024				
Restraint	Yes	No	Unknown	Total
Seat Belt	80	168	1	249

<sup>1</sup> Total vehicle occupant fatalities. Excludes motorcyclist, 4W/ATV, semi truck, pedestrian and pedalcyclist fatalities.

Senior (65+) Fatalities, 2024	
Year	Fatalities
2024	65
2023	73
2022	68

Fatalities by Residency and Location, 2024				
Location	New Mexico Resident	Non-Resident	Unknown Residency	Total
Rural	163	68	3	234
Urban	165	15	6	186
Unknown	-	-	-	-
<b>Total</b>	<b>328</b>	<b>83</b>	<b>9</b>	<b>420</b>

Month to Month Comparison of Fatalities by Alcohol Involvement, 2024												
Month	2024 Fatalities				2023 Fatalities				2022 Fatalities			
	Alcohol-involved <sup>1</sup>			Total	Alcohol-involved <sup>1</sup>			Total	Alcohol-involved <sup>1</sup>			Total
	Yes	No	Unk		Yes	No	Unk		Yes	No	Unk	
January	10	16	-	26	8	22	-	30	12	18	-	30
February	9	29	-	38	14	25	-	39	16	22	-	38
March	12	24	-	36	9	14	-	23	20	21	-	41
April	7	37	-	44	14	18	-	32	13	20	-	33
May	8	22	-	30	17	21	-	38	15	29	-	44
June	10	23	-	33	14	26	-	40	9	17	-	26
July	11	27	-	38	13	25	-	38	16	37	-	53
August	10	32	-	42	19	25	-	44	17	25	-	42
September	8	41	-	49	9	23	-	32	14	30	-	44
October	7	21	-	28	13	31	-	44	17	26	-	43
November	6	29	-	35	12	27	-	39	9	26	-	35
December	3	18	-	21	16	21	-	37	18	19	-	37
<b>Total</b>	<b>101</b>	<b>319</b>	<b>-</b>	<b>420</b>	<b>158</b>	<b>278</b>	<b>-</b>	<b>436</b>	<b>176</b>	<b>290</b>	<b>-</b>	<b>466</b>

<sup>1</sup> Identifies whether the fatality resulted from an alcohol-involved crash.

Month to Month Comparison of Fatalities by Seat Belt Usage, 2024												
Month	2024 Fatalities				2023 Fatalities				2022 Fatalities			
	Seat Belt <sup>1</sup>			Total <sup>2</sup>	Seat Belt <sup>1</sup>			Total <sup>2</sup>	Seat Belt <sup>1</sup>			Total <sup>2</sup>
	Yes	No	Unk		Yes	No	Unk		Yes	No	Unk	
January	6	9	-	15	8	11	-	19	4	12	-	16
February	7	17	-	24	6	11	-	17	9	13	-	22
March	5	13	-	18	5	4	1	10	12	15	-	27
April	6	19	-	25	8	15	-	23	11	15	-	26
May	-	10	-	10	3	18	-	21	5	21	-	26
June	7	17	-	24	8	15	-	23	7	7	-	14
July	7	16	-	23	8	10	-	18	14	26	-	40
August	9	13	1	23	11	13	-	24	6	19	-	25
September	12	21	-	33	1	10	-	11	10	15	-	25
October	9	9	-	18	7	16	-	23	8	13	-	21
November	6	13	-	19	9	13	-	22	11	9	-	20
December	6	11	-	17	9	15	-	24	9	15	-	24
<b>Total</b>	<b>80</b>	<b>168</b>	<b>1</b>	<b>249</b>	<b>83</b>	<b>151</b>	<b>1</b>	<b>235</b>	<b>106</b>	<b>180</b>	<b>-</b>	<b>286</b>

<sup>1</sup> Identifies whether a vehicle occupant was belted (Yes), unbelted (No), or belt usage was not reported (Unk).

<sup>2</sup> Total vehicle occupant fatalities. Excludes motorcyclist, 4W/ATV, semi truck, pedestrian and pedalcyclist fatalities.

Fatalities by County and Month, 2024														
County	Jan.	Feb.	Mar.	Apr.	May	Jun.	Jul.	Aug.	Sep.	Oct.	Nov.	Dec.	2024 Total	2023 Total
Bernalillo	8	13	14	13	11	8	11	12	12	6	9	5	122	114
Catron	-	-	1	-	-	-	-	-	-	-	-	-	1	2
Chaves	-	3	2	3	-	1	2	-	1	1	-	1	14	8
Cibola	1	-	-	1	-	1	1	-	-	2	-	-	6	16
Colfax	-	1	-	-	-	1	2	-	1	-	-	-	5	5
Curry	-	2	-	-	1	-	-	-	-	-	-	-	3	7
De Baca	1	-	-	-	-	-	-	-	-	-	-	-	1	-
Doña Ana	2	1	3	1	3	-	3	5	3	-	1	1	23	32
Eddy	1	2	2	2	1	-	1	3	2	1	4	1	20	18
Grant	-	1	1	1	-	-	-	-	-	2	2	-	7	6
Guadalupe	2	1	-	3	-	1	-	1	-	-	1	1	10	7
Harding	-	-	-	-	-	-	-	-	-	-	-	-	-	2
Hidalgo	-	1	-	-	-	-	-	-	1	-	-	-	2	2
Lea	2	1	2	2	2	6	1	3	6	2	3	1	31	18
Lincoln	1	-	-	-	-	2	-	-	2	2	-	-	7	10
Los Alamos	-	1	-	-	-	-	-	-	1	-	-	-	2	-
Luna	1	-	-	-	-	-	-	1	-	-	1	-	3	11
McKinley	1	-	1	2	1	-	2	4	5	-	1	1	18	29
Mora	-	-	-	-	-	1	1	-	-	-	-	-	2	6
Otero	-	-	2	1	1	1	2	1	1	-	1	1	11	13
Quay	-	-	1	-	-	1	-	1	-	1	-	-	4	5
Rio Arriba	1	1	1	1	1	1	1	-	1	-	1	1	10	15
Roosevelt	-	-	-	-	1	-	1	-	-	-	-	1	3	2
San Juan	1	4	2	2	2	-	4	1	3	3	-	1	23	20
San Miguel	1	-	-	1	1	1	2	-	2	-	1	-	9	9
Sandoval	-	1	1	1	-	1	1	3	1	-	5	-	14	13
Santa Fe	2	2	1	2	2	1	-	-	2	3	3	-	18	15
Sierra	-	-	-	-	-	1	2	-	1	-	-	-	4	5
Socorro	-	1	1	3	1	4	-	2	-	-	1	1	14	12
Taos	1	-	1	1	-	1	-	2	-	1	-	1	8	4
Torrance	-	1	-	1	1	-	1	2	3	3	-	2	14	15
Union	-	-	-	-	-	-	-	-	-	-	-	-	-	1
Valencia	-	1	-	3	1	-	-	1	1	1	1	2	11	14
<b>Total</b>	<b>26</b>	<b>38</b>	<b>36</b>	<b>44</b>	<b>30</b>	<b>33</b>	<b>38</b>	<b>42</b>	<b>49</b>	<b>28</b>	<b>35</b>	<b>21</b>	<b>420</b>	<b>436</b>

Fatalities by County Relating to Alcohol, Belt Use, and Under 21 BAC, 2024							
County	Alcohol-involved Fatalities <sup>1</sup>		Unbelted Fatalities		Under 21 (15-20) with a BAC <sup>2</sup>		Total Fatalities
	Count	Percent <sup>3</sup>	Count	Percent <sup>3</sup>	Count	Percent <sup>3</sup>	
Bernalillo	22	18.0%	37	30.3%	-	0.0%	122
Catron	-	0.0%	1	100.0%	-	0.0%	1
Chaves	3	21.4%	6	42.9%	-	0.0%	14
Cibola	4	66.7%	6	100.0%	-	0.0%	6
Colfax	-	0.0%	3	60.0%	-	0.0%	5
Curry	1	33.3%	-	0.0%	-	0.0%	3
De Baca	1	100.0%	1	100.0%	-	0.0%	1
Doña Ana	7	30.4%	8	34.8%	-	0.0%	23
Eddy	4	20.0%	10	50.0%	-	0.0%	20
Grant	1	14.3%	2	28.6%	-	0.0%	7
Guadalupe	1	10.0%	4	40.0%	-	0.0%	10
Harding	-	-	-	-	-	-	-
Hidalgo	-	0.0%	-	0.0%	-	0.0%	2
Lea	5	16.1%	13	41.9%	-	0.0%	31
Lincoln	2	28.6%	5	71.4%	-	0.0%	7
Los Alamos	-	0.0%	1	50.0%	-	0.0%	2
Luna	-	0.0%	1	33.3%	-	0.0%	3
McKinley	7	38.9%	10	55.6%	-	0.0%	18
Mora	1	50.0%	2	100.0%	-	0.0%	2
Otero	1	9.1%	5	45.5%	-	0.0%	11
Quay	2	50.0%	1	25.0%	-	0.0%	4
Rio Arriba	4	40.0%	4	40.0%	-	0.0%	10
Roosevelt	-	0.0%	-	0.0%	-	0.0%	3
San Juan	9	39.1%	13	56.5%	-	0.0%	23
San Miguel	4	44.4%	3	33.3%	-	0.0%	9
Sandoval	1	7.1%	6	42.9%	-	0.0%	14
Santa Fe	5	27.8%	6	33.3%	-	0.0%	18
Sierra	1	25.0%	2	50.0%	-	0.0%	4
Socorro	4	28.6%	7	50.0%	-	0.0%	14
Taos	4	50.0%	4	50.0%	-	0.0%	8
Torrance	5	35.7%	5	35.7%	-	0.0%	14
Union	-	-	-	-	-	-	-
Valencia	2	18.2%	2	18.2%	-	0.0%	11
<b>Total</b>	<b>101</b>	<b>24.0%</b>	<b>168</b>	<b>40.0%</b>	<b>-</b>	<b>0.0%</b>	<b>420</b>

<sup>1</sup> All fatalities in alcohol-involved crashes.

<sup>2</sup> Fatalities under 21 with a reported BAC (Blood Alcohol Content) above zero.

<sup>3</sup> Percentage based on total fatalities in the county.

Fatalities by County and Vehicle Type, 2024										
County	Cars	Pickup Trucks	Semi Trucks, Buses	Vans, SUVs, Utility Vehicles	ATV (4W)	Motorcyclists	Pedestrians	Pedalcyclists	RVs	Total Fatalities
Bernalillo	37	10	2	7	1	14	48	3	-	122
Catron	1	-	-	-	-	-	-	-	-	1
Chaves	3	3	1	2	-	1	4	-	-	14
Cibola	3	3	-	-	-	-	-	-	-	6
Colfax	2	3	-	-	-	-	-	-	-	5
Curry	-	-	-	-	-	-	3	-	-	3
De Baca	-	-	-	1	-	-	-	-	-	1
Doña Ana	4	3	-	5	1	4	5	1	-	23
Eddy	13	-	1	2	-	3	1	-	-	20
Grant	4	1	1	-	-	1	-	-	-	7
Guadalupe	4	-	1	3	-	1	1	-	-	10
Harding	-	-	-	-	-	-	-	-	-	-
Hidalgo	-	-	-	1	-	-	1	-	-	2
Lea	8	9	3	3	-	7	1	-	-	31
Lincoln	5	-	-	2	-	-	-	-	-	7
Los Alamos	1	-	-	1	-	-	-	-	-	2
Luna	1	-	1	-	-	-	-	1	-	3
McKinley	4	3	-	6	-	1	4	-	-	18
Mora	2	-	-	-	-	-	-	-	-	2
Otero	4	-	3	2	-	1	1	-	-	11
Quay	-	1	1	-	-	1	1	-	-	4
Rio Arriba	1	4	-	1	-	2	2	-	-	10
Roosevelt	1	-	-	-	-	1	1	-	-	3
San Juan	7	5	-	2	-	4	5	-	-	23
San Miguel	3	3	-	-	-	1	2	-	-	9
Sandoval	4	2	-	4	-	2	2	-	-	14
Santa Fe	5	3	-	2	-	-	6	2	-	18
Sierra	2	-	2	-	-	-	-	-	-	4
Socorro	3	4	-	4	-	1	1	-	1	14
Taos	2	2	-	3	-	1	-	-	-	8
Torrance	4	2	-	4	-	1	2	-	1	14
Union	-	-	-	-	-	-	-	-	-	-
Valencia	3	1	-	1	-	4	2	-	-	11
<b>Total</b>	<b>131</b>	<b>62</b>	<b>16</b>	<b>56</b>	<b>2</b>	<b>51</b>	<b>93</b>	<b>7</b>	<b>2</b>	<b>420</b>

Motorcycle <sup>1</sup> Fatalities by County and Month, 2024														
County	Jan.	Feb.	Mar.	Apr.	May	Jun.	Jul.	Aug.	Sep.	Oct.	Nov.	Dec.	2024 Total	2023 Total
Bernalillo	-	3	3	2	1	1	2	-	1	-	1	-	14	14
Catron	-	-	-	-	-	-	-	-	-	-	-	-	-	1
Chaves	-	-	-	1	-	-	-	-	-	-	-	-	1	-
Cibola	-	-	-	-	-	-	-	-	-	-	-	-	-	1
Colfax	-	-	-	-	-	-	-	-	-	-	-	-	-	-
Curry	-	-	-	-	-	-	-	-	-	-	-	-	-	1
De Baca	-	-	-	-	-	-	-	-	-	-	-	-	-	-
Doña Ana	-	-	-	-	2	-	-	2	-	-	-	-	4	4
Eddy	-	1	-	-	1	-	-	1	-	-	-	-	3	4
Grant	-	-	1	-	-	-	-	-	-	-	-	-	1	-
Guadalupe	-	-	-	-	-	-	-	1	-	-	-	-	1	1
Harding	-	-	-	-	-	-	-	-	-	-	-	-	-	-
Hidalgo	-	-	-	-	-	-	-	-	-	-	-	-	-	-
Lea	-	-	1	1	-	1	1	-	1	1	-	1	7	1
Lincoln	-	-	-	-	-	-	-	-	-	-	-	-	-	2
Los Alamos	-	-	-	-	-	-	-	-	-	-	-	-	-	-
Luna	-	-	-	-	-	-	-	-	-	-	-	-	-	-
McKinley	-	-	-	-	-	-	-	-	1	-	-	-	1	-
Mora	-	-	-	-	-	-	-	-	-	-	-	-	-	1
Otero	-	-	-	-	-	-	1	-	-	-	-	-	1	4
Quay	-	-	-	-	-	1	-	-	-	-	-	-	1	-
Rio Arriba	-	-	-	1	-	1	-	-	-	-	-	-	2	2
Roosevelt	-	-	-	-	1	-	-	-	-	-	-	-	1	-
San Juan	-	-	-	-	1	-	1	1	1	-	-	-	4	4
San Miguel	-	-	-	-	1	-	-	-	-	-	-	-	1	2
Sandoval	-	-	1	1	-	-	-	-	-	-	-	-	2	2
Santa Fe	-	-	-	-	-	-	-	-	-	-	-	-	-	2
Sierra	-	-	-	-	-	-	-	-	-	-	-	-	-	-
Socorro	-	-	-	-	-	-	-	-	-	-	1	-	1	1
Taos	-	-	-	-	-	-	-	1	-	-	-	-	1	1
Torrance	-	-	-	-	-	-	-	1	-	-	-	-	1	-
Union	-	-	-	-	-	-	-	-	-	-	-	-	-	-
Valencia	-	-	-	2	-	-	-	-	-	1	1	-	4	7
<b>Total</b>	-	4	6	8	7	4	5	7	4	2	3	1	51	55

<sup>1</sup> The term motorcycle includes motorized scooters and mopeds, but excludes 4W/ATVs.



Motorcycle <sup>1</sup> Fatalities by County Relating to Alcohol, Helmet Use, and Age, 2024							
County	Alcohol-involved Fatalities <sup>2</sup>		Unhelmeted Fatalities		Fatalities Under Age 30 (Ages 15-29)		Total Fatalities
	Count	Percent <sup>3</sup>	Count	Percent <sup>3</sup>	Count	Percent <sup>3</sup>	
<b>Bernalillo</b>	4	28.6%	12	85.7%	3	21.4%	14
<b>Catron</b>	-	-	-	-	-	-	-
<b>Chaves</b>	-	0.0%	1	100.0%	-	0.0%	1
<b>Cibola</b>	-	-	-	-	-	-	-
<b>Colfax</b>	-	-	-	-	-	-	-
<b>Curry</b>	-	-	-	-	-	-	-
<b>De Baca</b>	-	-	-	-	-	-	-
<b>Doña Ana</b>	1	25.0%	2	50.0%	-	0.0%	4
<b>Eddy</b>	-	0.0%	1	33.3%	-	0.0%	3
<b>Grant</b>	-	0.0%	-	0.0%	-	0.0%	1
<b>Guadalupe</b>	-	0.0%	1	100.0%	-	0.0%	1
<b>Harding</b>	-	-	-	-	-	-	-
<b>Hidalgo</b>	-	-	-	-	-	-	-
<b>Lea</b>	-	0.0%	4	57.1%	-	0.0%	7
<b>Lincoln</b>	-	-	-	-	-	-	-
<b>Los Alamos</b>	-	-	-	-	-	-	-
<b>Luna</b>	-	-	-	-	-	-	-
<b>McKinley</b>	-	0.0%	-	0.0%	-	0.0%	1
<b>Mora</b>	-	-	-	-	-	-	-
<b>Otero</b>	-	0.0%	1	100.0%	-	0.0%	1
<b>Quay</b>	1	100.0%	1	100.0%	-	0.0%	1
<b>Rio Arriba</b>	-	0.0%	1	50.0%	-	0.0%	2
<b>Roosevelt</b>	-	0.0%	1	100.0%	-	0.0%	1
<b>San Juan</b>	-	0.0%	3	75.0%	-	0.0%	4
<b>San Miguel</b>	-	0.0%	1	100.0%	-	0.0%	1
<b>Sandoval</b>	-	0.0%	1	50.0%	-	0.0%	2
<b>Santa Fe</b>	-	-	-	-	-	-	-
<b>Sierra</b>	-	-	-	-	-	-	-
<b>Socorro</b>	-	0.0%	1	100.0%	-	0.0%	1
<b>Taos</b>	1	100.0%	1	100.0%	-	0.0%	1
<b>Torrance</b>	-	0.0%	-	0.0%	-	0.0%	1
<b>Union</b>	-	-	-	-	-	-	-
<b>Valencia</b>	-	0.0%	3	75.0%	-	0.0%	4
<b>Total</b>	<b>7</b>	<b>0.0%</b>	<b>35</b>	<b>0.0%</b>	<b>-</b>	<b>0.0%</b>	<b>51</b>

<sup>1</sup> The term motorcycle includes motorized scooters and mopeds, but excludes 4W/ATVs.

<sup>2</sup> All motorcycle fatalities in alcohol-involved crashes.

<sup>3</sup> Percentage based on total motorcycle fatalities in the county.

Fatalities by Maintenance District and Month, 2024													
District	Jan.	Feb.	Mar.	Apr.	May	Jun.	Jul.	Aug.	Sep.	Oct.	Nov.	Dec.	Total
District 1	3	4	5	5	4	5	5	8	5	2	5	2	53
District 2	5	8	8	8	6	10	7	7	12	6	8	5	90
District 3	8	15	15	17	12	9	12	16	14	7	15	7	147
District 4	3	2	1	4	1	5	5	2	3	1	2	1	30
District 5	5	9	5	7	6	3	6	5	10	10	4	5	75
District 6	2	-	2	3	1	1	3	4	5	2	1	1	25
<b>Total</b>	<b>26</b>	<b>38</b>	<b>36</b>	<b>44</b>	<b>30</b>	<b>33</b>	<b>38</b>	<b>42</b>	<b>49</b>	<b>28</b>	<b>35</b>	<b>21</b>	<b>420</b>

Fatalities by Maintenance District Relating to Alcohol, Belt Use, and Under 21 BAC, 2024							
District	Alcohol-involved Fatalities <sup>1</sup>		Unbelted Fatalities		Under 21 (15-20) Fatalities with a BAC <sup>2</sup>		Total Fatalities
	Count	Percent <sup>3</sup>	Count	Percent <sup>3</sup>	Count	Percent <sup>3</sup>	
District 1	13	24.5%	20	37.7%	-	0.0%	53
District 2	17	18.9%	40	44.4%	-	0.0%	90
District 3	25	17.0%	45	30.6%	-	0.0%	147
District 4	8	26.7%	13	43.3%	-	0.0%	30
District 5	27	36.0%	33	44.0%	-	0.0%	75
District 6	11	44.0%	17	68.0%	-	0.0%	25
<b>Total</b>	<b>101</b>	<b>24.0%</b>	<b>168</b>	<b>40.0%</b>	<b>-</b>	<b>0.0%</b>	<b>420</b>

<sup>1</sup> All fatalities in alcohol-involved crashes.

<sup>2</sup> Fatalities under 21 with a reported BAC (Blood Alcohol Content) above zero.

<sup>3</sup> Percentage based on total fatalities in the district