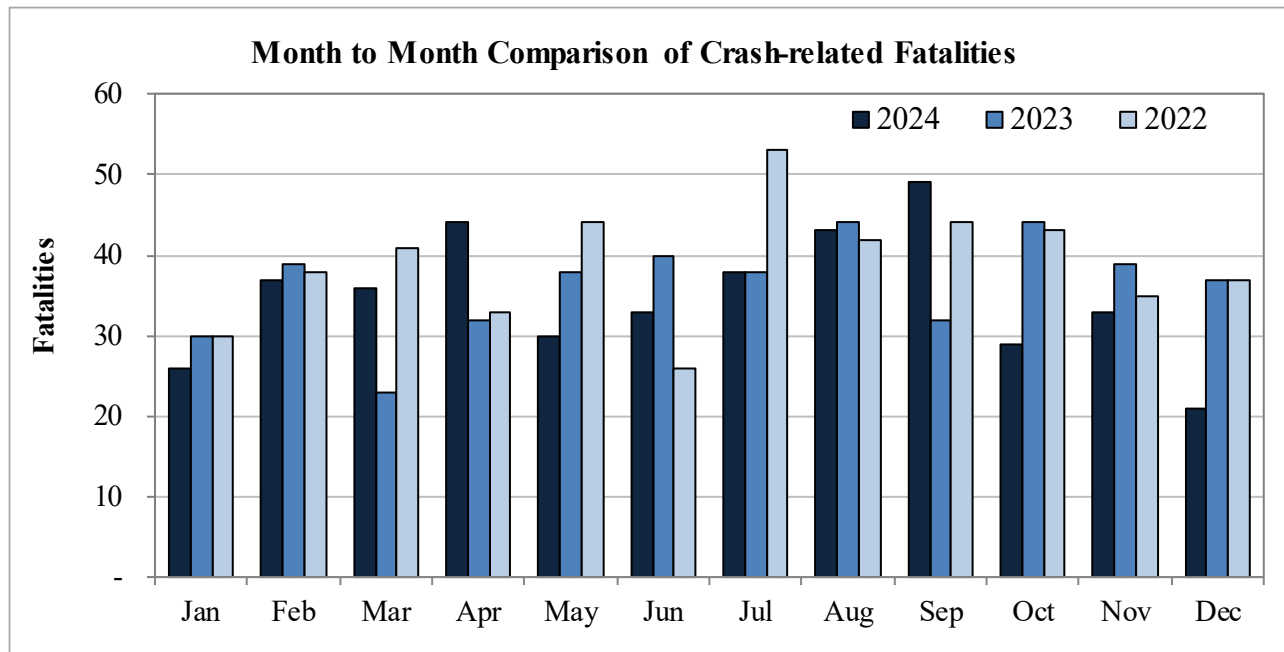


New Mexico Monthly Traffic Fatality Report, 2024

Produced for the New Mexico Department of Transportation, Traffic Safety Division, Traffic Records Bureau,
Under Contract No. 6380 by UNM Geospatial and Population Studies, Traffic Research Unit (TRU)

Fatalities by Month 2024, 2023, 2022			
Month	2024	2023	2022
January	26	30	30
February	37	39	38
March	36	23	41
April	44	32	33
May	30	38	44
June	33	40	26
July	38	38	53
August	43	44	42
September	49	32	44
October	29	44	43
November	33	39	35
December	21	37	37
Total	419	436	466



Fatalities by Vehicle Type, 2024										
Month in 2024	Cars	Pickup Trucks	Semi Trucks, Buses	Vans, SUVs, Utility Vehicles	ATV (4W)	Motorcyclists	Pedestrians	Pedalcyclists	RVs	Total Fatalities
January	7	4	2	4	-	-	8	1	-	26
February	8	11	-	4	-	4	9	1	-	37
March	9	3	3	5	-	6	9	-	1	36
April	16	2	-	7	1	8	8	1	1	44
May	7	-	-	3	-	7	11	2	-	30
June	12	9	1	3	-	4	3	1	-	33
July	11	8	3	4	-	5	7	-	-	38
August	11	7	1	6	1	7	10	-	-	43
September	17	8	2	7	-	5	10	-	-	49
October	10	5	1	4	-	2	7	-	-	29
November	8	2	2	8	-	3	9	1	-	33
December	6	6	1	5	-	1	2	-	-	21
Total	122	65	16	60	2	52	93	7	2	419

Fatalities by Alcohol Involvement ¹ , 2024				
Month in 2024	Alcohol-involved ¹	Not Alcohol-involved	Alcohol Unknown	Total Fatalities
January	10	16	-	26
February	10	27	-	37
March	12	24	-	36
April	8	36	-	44
May	9	21	-	30
June	13	20	-	33
July	15	23	-	38
August	15	28	-	43
September	9	40	-	49
October	8	21	-	29
November	5	28	-	33
December	3	18	-	21
Total	117	302	-	419

¹ All fatalities in alcohol-involved crashes.

Alcohol-involved Fatalities ¹ , 2024			
Month	2024	2023	2022
January	10	8	12
February	10	14	16
March	12	9	20
April	8	14	13
May	9	17	15
June	13	14	9
July	15	13	16
August	15	19	17
September	9	9	14
October	8	13	17
November	5	12	9
December	3	16	18
Total	117	158	176

¹ All fatalities in alcohol-involved crashes.

Fatalities Under 21, 2024	
Age	Fatalities
1	4
2	-
3	1
4	1
5	-
6	1
7	-
8	1
9	1
10	-
11	-
12	-
13	1
14	1
15	2
16	5
17	5
18	4
19	12
20	8
Total	47

Month in 2024	Total Fatalities, 2024	Alcohol-involved Fatalities ¹ , 2024			
		Motorcyclist Fatalities	Percent Motorcyclist Fatalities	Pedestrian Fatalities	Percent Pedestrian Fatalities
January	26	-	0.0%	5	19.2%
February	37	-	0.0%	2	5.4%
March	36	2	5.6%	5	13.9%
April	44	-	0.0%	-	0.0%
May	30	1	3.3%	3	10.0%
June	33	2	6.1%	-	0.0%
July	38	2	5.3%	5	13.2%
August	43	1	2.3%	3	7.0%
September	49	1	2.0%	1	2.0%
October	29	-	0.0%	2	6.9%
November	33	-	0.0%	2	6.1%
December	21	-	0.0%	-	0.0%
Total	419	9	2.1%	28	6.7%

¹ All fatalities in alcohol-involved crashes.

Alcohol-involved Fatalities ¹ , 2024		
Alcohol-involved	117	28%
Not Alcohol-involved	302	72%
Alcohol Unknown	-	-
Total	419	100%

¹ All fatalities in alcohol-involved crashes.

Motorcyclist Helmet Usage ¹ , 2024	
Helmet Usage	Fatalities
Yes	17
No	35
Unknown	-
Total	52

¹ Excludes 4W/ATV.

Fatalities by Vehicle ¹ Occupant Seat Belt Usage, 2024				
Restraint	Yes	No	Unknown	Total
Seat Belt	84	162	1	247

¹ Total vehicle occupant fatalities. Excludes motorcyclist, 4W/ATV, semi truck, pedestrian and pedalcyclist fatalities.

Senior (65+) Fatalities, 2024	
Year	Fatalities
2024	66
2023	73
2022	68

Fatalities by Residency and Location, 2024				
Location	New Mexico Resident	Non-Resident	Unknown Residency	Total
Rural	161	71	-	232
Urban	168	13	-	181
Unknown	-	-	-	-
Total	329	84	-	413

Month to Month Comparison of Fatalities by Alcohol Involvement, 2024												
Month	2024 Fatalities				2023 Fatalities				2022 Fatalities			
	Alcohol-involved ¹			Total	Alcohol-involved ¹			Total	Alcohol-involved ¹			Total
	Yes	No	Unk		Yes	No	Unk		Yes	No	Unk	
January	10	16	-	26	8	22	-	30	12	18	-	30
February	10	27	-	37	14	25	-	39	16	22	-	38
March	12	24	-	36	9	14	-	23	20	21	-	41
April	8	36	-	44	14	18	-	32	13	20	-	33
May	9	21	-	30	17	21	-	38	15	29	-	44
June	13	20	-	33	14	26	-	40	9	17	-	26
July	15	23	-	38	13	25	-	38	16	37	-	53
August	15	28	-	43	19	25	-	44	17	25	-	42
September	9	40	-	49	9	23	-	32	14	30	-	44
October	8	21	-	29	13	31	-	44	17	26	-	43
November	5	28	-	33	12	27	-	39	9	26	-	35
December	3	18	-	21	16	21	-	37	18	19	-	37
Total	117	302	-	419	158	278	-	436	176	290	-	466

¹ Identifies whether the fatality resulted from an alcohol-involved crash.

Month to Month Comparison of Fatalities by Seat Belt Usage, 2024												
Month	2024 Fatalities				2023 Fatalities				2022 Fatalities			
	Seat Belt ¹			Total ²	Seat Belt ¹			Total ²	Seat Belt ¹			Total ²
	Yes	No	Unk		Yes	No	Unk		Yes	No	Unk	
January	6	9	-	15	8	11	-	19	4	12	-	16
February	7	16	-	23	6	11	-	17	9	13	-	22
March	5	12	-	17	5	4	1	10	12	15	-	27
April	6	19	-	25	8	15	-	23	11	15	-	26
May	-	10	-	10	3	18	-	21	5	21	-	26
June	7	17	-	24	8	15	-	23	7	7	-	14
July	8	15	-	23	8	10	-	18	14	26	-	40
August	10	13	1	24	11	13	-	24	6	19	-	25
September	12	20	-	32	1	10	-	11	10	15	-	25
October	9	10	-	19	7	16	-	23	8	13	-	21
November	8	10	-	18	9	13	-	22	11	9	-	20
December	6	11	-	17	9	15	-	24	9	15	-	24
Total	84	162	1	247	83	151	1	235	106	180	-	286

¹ Identifies whether a vehicle occupant was belted (Yes), unbelted (No), or belt usage was not reported (Unk).

² Total vehicle occupant fatalities. Excludes motorcyclist, 4W/ATV, semi truck, pedestrian and pedalcyclist fatalities.

Fatalities by County and Month, 2024														
County	Jan.	Feb.	Mar.	Apr.	May	Jun.	Jul.	Aug.	Sep.	Oct.	Nov.	Dec.	2024 Total	2023 Total
Bernalillo	8	12	14	13	11	8	11	12	12	6	8	5	120	114
Catron	-	-	1	-	-	-	-	-	-	-	-	-	1	2
Chaves	-	3	2	3	-	1	2	-	1	1	-	1	14	8
Cibola	1	-	-	1	-	1	1	-	-	2	-	-	6	16
Colfax	-	1	-	-	-	1	2	-	1	-	-	-	5	5
Curry	-	2	-	-	1	-	-	-	-	-	-	-	3	7
De Baca	1	-	-	-	-	-	-	1	-	-	-	-	2	-
Doña Ana	2	1	3	1	3	-	3	5	3	-	1	1	23	32
Eddy	1	2	2	2	1	-	1	3	2	1	3	1	19	18
Grant	-	1	1	1	-	-	-	-	-	2	2	-	7	6
Guadalupe	2	1	-	3	-	1	-	1	-	-	1	1	10	7
Harding	-	-	-	-	-	-	-	-	-	-	-	-	-	2
Hidalgo	-	1	-	-	-	-	-	-	1	1	-	-	3	2
Lea	2	1	2	2	2	6	1	3	6	2	3	1	31	18
Lincoln	1	-	-	-	-	2	-	-	2	2	-	-	7	10
Los Alamos	-	1	-	-	-	-	-	-	1	-	-	-	2	-
Luna	1	-	-	-	-	-	-	1	-	-	1	-	3	11
McKinley	1	-	1	2	1	-	2	4	5	-	1	1	18	29
Mora	-	-	-	-	-	1	1	-	-	-	-	-	2	6
Otero	-	-	2	1	1	1	2	1	1	-	1	1	11	13
Quay	-	-	1	-	-	1	-	1	-	1	-	-	4	5
Rio Arriba	1	1	1	1	1	1	1	-	1	-	1	1	10	15
Roosevelt	-	-	-	-	1	-	1	-	-	-	-	1	3	2
San Juan	1	3	2	2	2	-	4	1	3	3	-	1	22	20
San Miguel	1	-	-	1	1	1	2	-	2	-	1	-	9	9
Sandoval	-	2	1	1	-	1	1	3	1	-	5	-	15	13
Santa Fe	2	2	1	2	2	1	-	-	2	3	3	-	18	15
Sierra	-	-	-	-	-	1	2	-	1	-	-	-	4	5
Socorro	-	1	1	3	1	4	-	2	-	-	1	1	14	12
Taos	1	-	1	1	-	1	-	2	-	1	-	1	8	4
Torrance	-	1	-	1	1	-	1	2	3	3	-	2	14	15
Union	-	-	-	-	-	-	-	-	-	-	-	-	-	1
Valencia	-	1	-	3	1	-	-	1	1	1	1	2	11	14
Total	26	37	36	44	30	33	38	43	49	29	33	21	419	436

Fatalities by County Relating to Alcohol, Belt Use, and Under 21 BAC, 2024							
County	Alcohol-involved Fatalities ¹		Unbelted Fatalities		Under 21 (15-20) with a BAC ²		Total Fatalities
	Count	Percent ³	Count	Percent ³	Count	Percent ³	
Bernalillo	29	24.2%	34	28.3%	1	0.8%	120
Catron	-	0.0%	1	100.0%	-	0.0%	1
Chaves	4	28.6%	6	42.9%	-	0.0%	14
Cibola	4	66.7%	6	100.0%	-	0.0%	6
Colfax	-	0.0%	3	60.0%	-	0.0%	5
Curry	1	33.3%	-	0.0%	-	0.0%	3
De Baca	1	50.0%	2	100.0%	-	0.0%	2
Doña Ana	7	30.4%	8	34.8%	-	0.0%	23
Eddy	4	21.1%	8	42.1%	-	0.0%	19
Grant	1	14.3%	2	28.6%	-	0.0%	7
Guadalupe	1	10.0%	4	40.0%	-	0.0%	10
Harding	-	-	-	-	-	-	-
Hidalgo	-	0.0%	-	0.0%	-	0.0%	3
Lea	6	19.4%	13	41.9%	-	0.0%	31
Lincoln	2	28.6%	5	71.4%	-	0.0%	7
Los Alamos	-	0.0%	1	50.0%	-	0.0%	2
Luna	-	0.0%	1	33.3%	-	0.0%	3
McKinley	7	38.9%	10	55.6%	-	0.0%	18
Mora	1	50.0%	2	100.0%	-	0.0%	2
Otero	1	9.1%	5	45.5%	-	0.0%	11
Quay	2	50.0%	1	25.0%	-	0.0%	4
Rio Arriba	5	50.0%	4	40.0%	-	0.0%	10
Roosevelt	1	33.3%	-	0.0%	1	33.3%	3
San Juan	11	50.0%	11	50.0%	2	0.0%	22
San Miguel	4	44.4%	3	33.3%	-	0.0%	9
Sandoval	1	6.7%	7	46.7%	-	0.0%	15
Santa Fe	5	27.8%	6	33.3%	-	0.0%	18
Sierra	2	50.0%	2	50.0%	-	0.0%	4
Socorro	4	28.6%	6	42.9%	-	0.0%	14
Taos	5	62.5%	4	50.0%	-	0.0%	8
Torrance	6	42.9%	5	35.7%	-	0.0%	14
Union	-	-	-	-	-	-	-
Valencia	2	18.2%	2	18.2%	-	0.0%	11
Total	117	27.9%	162	38.7%	4	1.0%	419

¹ All fatalities in alcohol-involved crashes.

² Fatalities under 21 with a reported BAC (Blood Alcohol Content) above zero.

³ Percentage based on total fatalities in the county.

Fatalities by County and Vehicle Type, 2024

County	Cars	Pickup Trucks	Semi Trucks, Buses	Vans, SUVs, Utility Vehicles	ATV (4W)	Motorcyclists	Pedestrians	Pedalcyclists	RVs	Total Fatalities
Bernalillo	31	12	2	9	1	14	48	3	-	120
Catron	1	-	-	-	-	-	-	-	-	1
Chaves	3	3	1	2	-	1	4	-	-	14
Cibola	3	3	-	-	-	-	-	-	-	6
Colfax	2	3	-	-	-	-	-	-	-	5
Curry	-	-	-	-	-	-	3	-	-	3
De Baca	-	1	-	1	-	-	-	-	-	2
Doña Ana	4	3	-	5	1	4	5	1	-	23
Eddy	11	-	1	2	-	4	1	-	-	19
Grant	4	1	1	-	-	1	-	-	-	7
Guadalupe	4	-	1	3	-	1	1	-	-	10
Harding	-	-	-	-	-	-	-	-	-	-
Hidalgo	1	-	-	1	-	-	1	-	-	3
Lea	8	9	3	3	-	7	1	-	-	31
Lincoln	5	-	-	2	-	-	-	-	-	7
Los Alamos	1	-	-	1	-	-	-	-	-	2
Luna	1	-	1	-	-	-	-	1	-	3
McKinley	4	3	-	6	-	1	4	-	-	18
Mora	2	-	-	-	-	-	-	-	-	2
Otero	4	-	3	2	-	1	1	-	-	11
Quay	-	1	1	-	-	1	1	-	-	4
Rio Arriba	1	4	-	1	-	2	2	-	-	10
Roosevelt	1	-	-	-	-	1	1	-	-	3
San Juan	6	5	-	2	-	4	5	-	-	22
San Miguel	3	3	-	-	-	1	2	-	-	9
Sandoval	4	2	-	5	-	2	2	-	-	15
Santa Fe	5	3	-	2	-	-	6	2	-	18
Sierra	2	-	2	-	-	-	-	-	-	4
Socorro	3	4	-	4	-	1	1	-	1	14
Taos	2	2	-	3	-	1	-	-	-	8
Torrance	3	2	-	5	-	1	2	-	1	14
Union	-	-	-	-	-	-	-	-	-	-
Valencia	3	1	-	1	-	4	2	-	-	11
Total	122	65	16	60	2	52	93	7	2	419

Motorcycle ¹ Fatalities by County and Month, 2024														
County	Jan.	Feb.	Mar.	Apr.	May	Jun.	Jul.	Aug.	Sep.	Oct.	Nov.	Dec.	2024 Total	2023 Total
Bernalillo	-	3	3	2	1	1	2	-	1	-	1	-	14	14
Catron	-	-	-	-	-	-	-	-	-	-	-	-	-	1
Chaves	-	-	-	1	-	-	-	-	-	-	-	-	1	-
Cibola	-	-	-	-	-	-	-	-	-	-	-	-	-	1
Colfax	-	-	-	-	-	-	-	-	-	-	-	-	-	-
Curry	-	-	-	-	-	-	-	-	-	-	-	-	-	1
De Baca	-	-	-	-	-	-	-	-	-	-	-	-	-	-
Doña Ana	-	-	-	-	2	-	-	2	-	-	-	-	4	4
Eddy	-	1	-	-	1	-	-	1	1	-	-	-	4	4
Grant	-	-	1	-	-	-	-	-	-	-	-	-	1	-
Guadalupe	-	-	-	-	-	-	-	1	-	-	-	-	1	1
Harding	-	-	-	-	-	-	-	-	-	-	-	-	-	-
Hidalgo	-	-	-	-	-	-	-	-	-	-	-	-	-	-
Lea	-	-	1	1	-	1	1	-	1	1	-	1	7	1
Lincoln	-	-	-	-	-	-	-	-	-	-	-	-	-	2
Los Alamos	-	-	-	-	-	-	-	-	-	-	-	-	-	-
Luna	-	-	-	-	-	-	-	-	-	-	-	-	-	-
McKinley	-	-	-	-	-	-	-	-	1	-	-	-	1	-
Mora	-	-	-	-	-	-	-	-	-	-	-	-	-	1
Otero	-	-	-	-	-	-	1	-	-	-	-	-	1	4
Quay	-	-	-	-	-	1	-	-	-	-	-	-	1	-
Rio Arriba	-	-	-	1	-	1	-	-	-	-	-	-	2	2
Roosevelt	-	-	-	-	1	-	-	-	-	-	-	-	1	-
San Juan	-	-	-	-	1	-	1	1	1	-	-	-	4	4
San Miguel	-	-	-	-	1	-	-	-	-	-	-	-	1	2
Sandoval	-	-	1	1	-	-	-	-	-	-	-	-	2	2
Santa Fe	-	-	-	-	-	-	-	-	-	-	-	-	-	2
Sierra	-	-	-	-	-	-	-	-	-	-	-	-	-	-
Socorro	-	-	-	-	-	-	-	-	-	-	1	-	1	1
Taos	-	-	-	-	-	-	-	1	-	-	-	-	1	1
Torrance	-	-	-	-	-	-	-	1	-	-	-	-	1	-
Union	-	-	-	-	-	-	-	-	-	-	-	-	-	-
Valencia	-	-	-	2	-	-	-	-	-	1	1	-	4	7
Total	-	4	6	8	7	4	5	7	5	2	3	1	52	55

¹ The term motorcycle includes motorized scooters and mopeds, but excludes 4W/ATVs.

Motorcycle ¹ Fatalities by County Relating to Alcohol, Helmet Use, and Age, 2024							
County	Alcohol-involved Fatalities ²		Unhelmeted Fatalities		Fatalities Under Age 30 (Ages 15-29)		Total Fatalities
	Count	Percent ³	Count	Percent ³	Count	Percent ³	
Bernalillo	6	42.9%	11	78.6%	4	28.6%	14
Catron	-	-	-	-	-	-	-
Chaves	-	0.0%	1	100.0%	-	0.0%	1
Cibola	-	-	-	-	-	-	-
Colfax	-	-	-	-	-	-	-
Curry	-	-	-	-	-	-	-
De Baca	-	-	-	-	-	-	-
Doña Ana	1	25.0%	2	50.0%	-	0.0%	4
Eddy	1	25.0%	2	50.0%	1	25.0%	4
Grant	-	0.0%	-	0.0%	-	0.0%	1
Guadalupe	-	0.0%	1	100.0%	-	0.0%	1
Harding	-	-	-	-	-	-	-
Hidalgo	-	-	-	-	-	-	-
Lea	-	0.0%	4	57.1%	-	0.0%	7
Lincoln	-	-	-	-	-	-	-
Los Alamos	-	-	-	-	-	-	-
Luna	-	-	-	-	-	-	-
McKinley	-	0.0%	-	0.0%	-	0.0%	1
Mora	-	-	-	-	-	-	-
Otero	-	0.0%	1	100.0%	-	0.0%	1
Quay	1	100.0%	1	100.0%	-	0.0%	1
Rio Arriba	-	0.0%	1	50.0%	-	0.0%	2
Roosevelt	-	0.0%	1	100.0%	-	0.0%	1
San Juan	-	0.0%	3	75.0%	-	0.0%	4
San Miguel	-	0.0%	1	100.0%	-	0.0%	1
Sandoval	-	0.0%	1	50.0%	-	0.0%	2
Santa Fe	-	-	-	-	-	-	-
Sierra	-	-	-	-	-	-	-
Socorro	-	0.0%	1	100.0%	-	0.0%	1
Taos	1	100.0%	1	100.0%	-	0.0%	1
Torrance	-	0.0%	-	0.0%	-	0.0%	1
Union	-	-	-	-	-	-	-
Valencia	-	0.0%	3	75.0%	-	0.0%	4
Total	10	0.0%	35	0.0%	-	0.0%	52

¹ The term motorcycle includes motorized scooters and mopeds, but excludes 4W/ATVs.

² All motorcycle fatalities in alcohol-involved crashes.

³ Percentage based on total motorcycle fatalities in the county.

Fatalities by Maintenance District and Month, 2024													
District	Jan.	Feb.	Mar.	Apr.	May	Jun.	Jul.	Aug.	Sep.	Oct.	Nov.	Dec.	Total
District 1	3	4	5	5	4	5	5	8	5	3	5	2	54
District 2	5	8	8	8	6	10	7	8	12	6	7	5	90
District 3	8	14	15	17	12	9	12	15	14	7	14	7	144
District 4	3	2	1	4	1	5	5	2	3	1	2	1	30
District 5	5	8	5	7	6	3	6	5	10	10	4	5	74
District 6	2	1	2	3	1	1	3	5	5	2	1	1	27
Total	26	37	36	44	30	33	38	43	49	29	33	21	419

Fatalities by Maintenance District Relating to Alcohol, Belt Use, and Under 21 BAC, 2024							
District	Alcohol-involved Fatalities ¹		Unbelted Fatalities		Under 21 (15-20) Fatalities with a BAC ²		Total Fatalities
	Count	Percent ³	Count	Percent ³	Count	Percent ³	
District 1	14	25.9%	19	35.2%	-	0.0%	54
District 2	20	22.2%	39	43.3%	1	1.1%	90
District 3	32	22.2%	42	29.2%	1	0.7%	144
District 4	8	26.7%	13	43.3%	-	0.0%	30
District 5	32	43.2%	31	41.9%	2	2.7%	74
District 6	11	40.7%	18	66.7%	-	0.0%	27
Total	117	27.9%	162	38.7%	4	1.0%	419

¹ All fatalities in alcohol-involved crashes.

² Fatalities under 21 with a reported BAC (Blood Alcohol Content) above zero.

³ Percentage based on total fatalities in the district