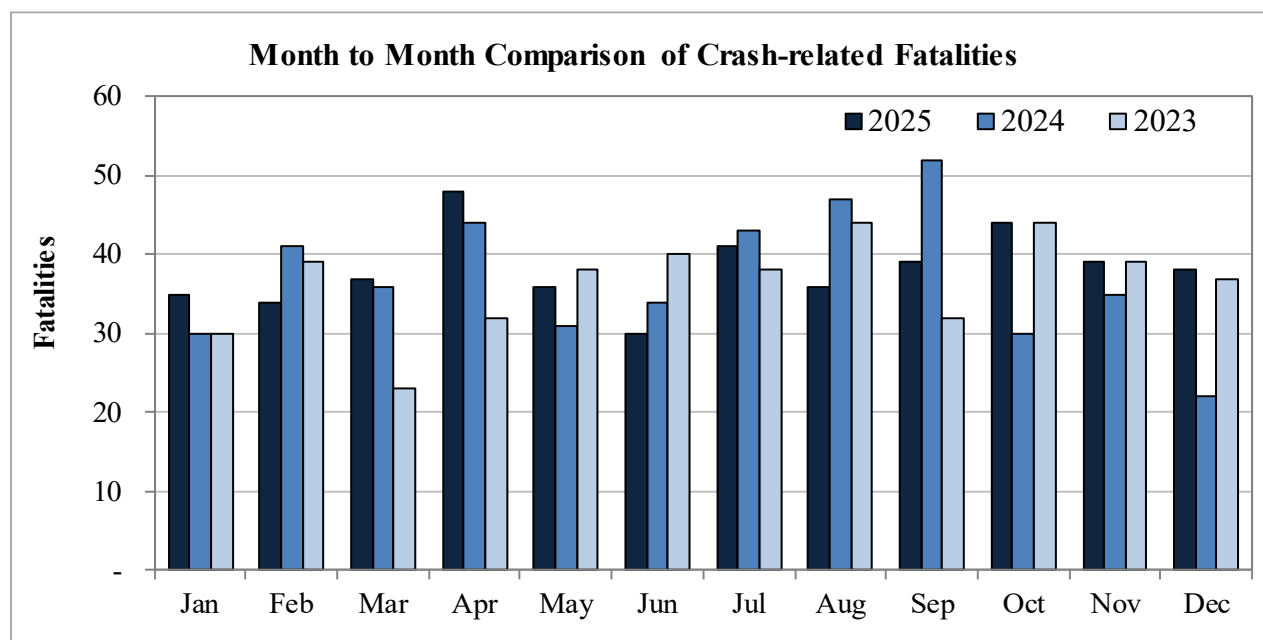


New Mexico Monthly Traffic Fatality Report, 2025

Produced for the New Mexico Department of Transportation, Traffic Safety Division, Traffic Records Bureau,
Under Contract No. 6380 by UNM Geospatial and Population Studies, Traffic Research Unit (TRU)

Fatalities by Month 2025, 2024, 2023 Year to Date			
Month	2025	2024	2023
January	35	30	30
February	34	41	39
March	37	36	23
April	48	44	32
May	36	31	38
June	30	34	40
July	41	43	38
August	36	47	44
September	39	52	32
October	44	30	44
November	39	35	39
December	38	22	37
Total	457	445	436



Fatalities by Vehicle Type, 2025 to Date										
Month in 2025	Cars	Pickup Trucks	Semi Trucks, Buses	Vans, SUVs, Utility Vehicles	ATV (4W)	Motorcyclists	Pedestrians	Pedalcyclists	RVs	Total Fatalities
January	10	7	1	8	-	2	5	2	-	35
February	6	6	2	5	1	3	9	2	-	34
March	6	6	3	7	-	9	5	-	1	37
April	11	6	2	11	2	8	5	3	-	48
May	12	6	1	4	-	10	3	-	-	36
June	9	4	4	3	1	4	4	1	-	30
July	7	4	2	7	-	5	13	2	1	41
August	11	8	1	6	-	6	3	1	-	36
September	14	6	-	7	-	4	7	-	1	39
October	8	3	2	9	1	8	11	1	1	44
November	10	4	1	4	-	5	14	1	-	39
December	11	5	2	5	-	5	9	-	1	38
Total	115	65	21	76	5	69	88	13	5	457

Fatalities by Alcohol Involvement ¹ , 2025 to Date				
Month in 2025	Alcohol-involved ¹	Not Alcohol-involved	Alcohol Unknown	Total Fatalities
January	8	27	-	35
February	9	25	-	34
March	8	29	-	37
April	15	33	-	48
May	18	18	-	36
June	7	23	-	30
July	11	30	-	41
August	11	25	-	36
September	8	31	-	39
October	14	30	-	44
November	14	25	-	39
December	9	29	-	38
Total	132	325	-	457

¹ All fatalities in alcohol-involved crashes.

Alcohol-involved Fatalities ¹ , 2025 to Date			
Month	2025	2024	2023
January	8	12	8
February	9	15	14
March	8	13	9
April	15	14	14
May	18	13	17
June	7	18	14
July	11	22	13
August	11	21	19
September	8	20	9
October	14	11	13
November	14	11	12
December	9	8	16
Total	132	178	158

¹ All fatalities in alcohol-involved crashes.

Fatalities Under 21, 2025 to Date	
Age	Fatalities
1	1
2	1
3	-
4	-
5	-
6	-
7	-
8	-
9	-
10	-
11	-
12	2
13	-
14	1
15	4
16	5
17	6
18	9
19	14
20	10
Total	53

Month in 2025	Total Fatalities, 2025 to Date	Alcohol-involved Fatalities ¹ , 2025 to Date			
		Motorcyclist Fatalities	Percent Motorcyclist Fatalities	Pedestrian Fatalities	Percent Pedestrian Fatalities
January	35	-	0.0%	3	8.6%
February	34	-	0.0%	4	11.8%
March	37	-	0.0%	1	2.7%
April	48	4	8.3%	1	2.1%
May	36	3	8.3%	2	5.6%
June	30	1	3.3%	-	0.0%
July	41	1	2.4%	5	12.2%
August	36	1	2.8%	1	2.8%
September	39	1	2.6%	1	2.6%
October	44	1	2.3%	5	11.4%
November	39	-	0.0%	5	12.8%
December	38	-	0.0%	1	2.6%
Total	457	12	2.6%	29	6.3%

¹ All fatalities in alcohol-involved crashes.

Alcohol-involved Fatalities ¹ , 2025 to Date		
Alcohol-involved	132	29%
Not Alcohol-involved	325	71%
Alcohol Unknown	-	-
Total	457	100%

¹ All fatalities in alcohol-involved crashes.

Motorcyclist Helmet Usage ¹ , 2025 to Date	
Helmet Usage	Fatalities
Yes	34
No	35
Unknown	-
Total	69

¹ Excludes 4W/ATV.

Fatalities by Vehicle ¹ Occupant Seat Belt Usage, 2025 to Date				
Restraint	Yes	No	Unknown	Total
Seat Belt	114	138	4	256

¹ Total vehicle occupant fatalities. Excludes motorcyclist, 4W/ATV, semi truck, pedestrian and pedalcyclist fatalities.

Senior (65+) Fatalities, 2025 to Date	
Year	Fatalities
2025	82
2024	74
2023	73

Fatalities by Residency and Location, 2025 to Date				
Location	New Mexico Resident	Non-Resident	Unknown Residency	Total
Rural	177	80	-	257
Urban	176	16	5	197
Unknown	3	-	-	3
Total	356	96	5	457

Month to Month Comparison of Fatalities by Alcohol Involvement, 2025 to Date												
Month	2025 Fatalities				2024 Fatalities				2023 Fatalities			
	Alcohol-involved ¹			Total	Alcohol-involved ¹			Total	Alcohol-involved ¹			Total
	Yes	No	Unk		Yes	No	Unk		Yes	No	Unk	
January	8	27	-	35	12	18	-	30	8	22	-	30
February	9	25	-	34	15	26	-	41	14	25	-	39
March	8	29	-	37	13	23	-	36	9	14	-	23
April	15	33	-	48	14	30	-	44	14	18	-	32
May	18	18	-	36	13	18	-	31	17	21	-	38
June	7	23	-	30	18	16	-	34	14	26	-	40
July	11	30	-	41	22	21	-	43	13	25	-	38
August	11	25	-	36	21	26	-	47	19	25	-	44
September	8	31	-	39	20	32	-	52	9	23	-	32
October	14	30	-	44	11	19	-	30	13	31	-	44
November	14	25	-	39	11	24	-	35	12	27	-	39
December	9	29	-	38	8	14	-	22	16	21	-	37
Total	132	325	-	457	178	267	-	445	158	278	-	436

¹ Identifies whether the fatality resulted from an alcohol-involved crash.

Month to Month Comparison of Fatalities by Seat Belt Usage, 2025 to Date												
Month	2025 Fatalities				2024 Fatalities				2023 Fatalities			
	Seat Belt ¹			Total ²	Seat Belt ¹			Total ²	Seat Belt ¹			Total ²
	Yes	No	Unk		Yes	No	Unk		Yes	No	Unk	
January	15	10	-	25	7	9	-	16	8	11	-	19
February	3	14	-	17	7	18	-	25	6	11	-	17
March	6	13	-	19	5	12	-	17	5	4	1	10
April	14	14	-	28	9	16	-	25	8	15	-	23
May	7	15	-	22	-	11	-	11	3	18	-	21
June	9	7	-	16	8	16	-	24	8	15	-	23
July	9	9	-	18	8	17	-	25	8	10	-	18
August	10	13	2	25	10	14	-	24	11	13	-	24
September	12	15	-	27	13	18	-	31	1	10	-	11
October	8	12	-	20	11	8	-	19	7	16	-	23
November	6	10	2	18	8	10	-	18	9	13	-	22
December	15	6	-	21	6	11	-	17	9	15	-	24
Total	114	138	4	256	92	160	-	252	83	151	1	235

¹ Identifies whether a vehicle occupant was belted (Yes), unbelted (No), or belt usage was not reported (Unk).

² Total vehicle occupant fatalities. Excludes motorcyclist, 4W/ATV, semi truck, pedestrian and pedalcyclist fatalities.

Fatalities by County and Month, 2025 To Date														
County	Jan.	Feb.	Mar.	Apr.	May	Jun.	Jul.	Aug.	Sep.	Oct.	Nov.	Dec.	2025 Total, to Date	2024 Total, to Date
Bernalillo	5	11	9	8	8	9	15	9	11	12	10	6	113	122
Catron	-	-	-	-	-	-	-	-	-	-	-	1	1	1
Chaves	1	1	-	1	1	1	2	-	1	1	1	-	10	14
Cibola	1	-	3	1	-	1	2	1	2	-	1	-	12	8
Colfax	-	-	-	-	-	-	-	-	-	-	-	-	-	5
Curry	-	1	-	-	-	-	-	-	-	2	-	3	6	3
De Baca	-	-	-	-	-	-	-	-	-	-	-	-	-	2
Doña Ana	3	2	1	5	3	2	2	3	3	4	5	2	35	25
Eddy	-	-	4	4	3	1	-	1	3	4	1	-	21	21
Grant	-	2	-	1	2	-	-	-	-	1	1	1	8	7
Guadalupe	1	-	1	1	-	3	-	1	2	1	-	-	10	11
Harding	-	-	-	-	-	-	-	-	-	-	1	-	1	-
Hidalgo	-	1	-	-	-	1	-	-	-	-	2	-	4	3
Lea	7	-	1	6	-	2	1	4	-	-	1	3	25	31
Lincoln	2	1	-	1	-	-	-	2	-	2	-	-	8	7
Los Alamos	-	-	-	-	-	-	-	-	-	-	-	-	-	2
Luna	2	-	3	1	2	2	-	-	1	1	-	1	13	3
McKinley	4	5	2	1	3	-	5	-	5	3	2	8	38	20
Mora	-	-	-	2	-	-	-	-	1	1	-	1	5	2
Otero	-	1	-	-	1	-	2	1	3	2	1	1	12	13
Quay	1	-	1	-	1	1	1	-	-	-	-	-	5	4
Rio Arriba	-	1	2	4	1	-	-	2	2	1	1	-	14	11
Roosevelt	-	1	1	-	1	-	-	1	-	2	-	-	6	4
San Juan	3	-	1	3	3	-	5	2	3	1	5	3	29	25
San Miguel	-	3	1	2	-	2	-	1	-	-	1	3	13	9
Sandoval	1	-	1	2	1	2	2	1	-	2	1	-	13	20
Santa Fe	1	3	1	2	-	3	1	1	-	1	1	2	16	18
Sierra	1	-	1	1	-	-	-	-	-	-	-	-	3	4
Socorro	1	-	-	-	2	-	-	3	-	-	1	-	7	15
Taos	-	1	2	-	3	-	-	1	-	2	1	-	10	9
Torrance	-	-	-	1	-	-	2	1	1	1	1	1	8	14
Union	1	-	-	-	-	-	-	1	-	-	-	-	2	1
Valencia	-	-	2	1	1	-	1	-	1	-	1	2	9	11
Total	35	34	37	48	36	30	41	36	39	44	39	38	457	445

Fatalities by County Relating to Alcohol, Belt Use, and Under 21 BAC, 2025 to Date							
County	Alcohol-involved Fatalities ¹		Unbelted Fatalities		Under 21 (15-20) with a BAC ²		Total Fatalities
	Count	Percent ³	Count	Percent ³	Count	Percent ³	
Bernalillo	26	23.0%	19	16.8%	3	2.7%	113
Catron	1	100.0%	1	100.0%	-	0.0%	1
Chaves	3	30.0%	4	40.0%	1	10.0%	10
Cibola	5	41.7%	6	50.0%	-	0.0%	12
Colfax	-	-	-	-	-	-	-
Curry	1	16.7%	2	33.3%	-	0.0%	6
De Baca	-	-	-	-	-	-	-
Doña Ana	11	31.4%	16	45.7%	-	0.0%	35
Eddy	6	28.6%	6	28.6%	1	4.8%	21
Grant	-	0.0%	1	12.5%	-	0.0%	8
Guadalupe	-	0.0%	3	30.0%	-	0.0%	10
Harding	-	0.0%	-	0.0%	-	0.0%	1
Hidalgo	-	0.0%	2	50.0%	-	0.0%	4
Lea	6	24.0%	6	24.0%	1	4.0%	25
Lincoln	2	25.0%	2	25.0%	-	0.0%	8
Los Alamos	-	-	-	-	-	-	-
Luna	1	7.7%	3	23.1%	-	0.0%	13
McKinley	14	36.8%	17	44.7%	-	0.0%	38
Mora	-	0.0%	1	20.0%	-	0.0%	5
Otero	5	41.7%	4	33.3%	-	0.0%	12
Quay	1	20.0%	-	0.0%	-	0.0%	5
Rio Arriba	6	42.9%	7	50.0%	-	0.0%	14
Roosevelt	3	50.0%	5	83.3%	-	0.0%	6
San Juan	17	58.6%	6	20.7%	4	13.8%	29
San Miguel	4	30.8%	5	38.5%	-	0.0%	13
Sandoval	5	38.5%	4	30.8%	-	0.0%	13
Santa Fe	4	25.0%	4	25.0%	-	0.0%	16
Sierra	-	0.0%	2	66.7%	-	0.0%	3
Socorro	3	42.9%	2	28.6%	-	0.0%	7
Taos	4	40.0%	3	30.0%	-	0.0%	10
Torrance	2	25.0%	3	37.5%	-	0.0%	8
Union	-	0.0%	1	50.0%	-	0.0%	2
Valencia	2	22.2%	3	33.3%	1	11.1%	9
Total	132	28.9%	138	30.2%	11	2.4%	457

¹ All fatalities in alcohol-involved crashes.

² Fatalities under 21 with a reported BAC (Blood Alcohol Content) above zero.

³ Percentage based on total fatalities in the county.

Fatalities by County and Vehicle Type, 2025 to Date										
County	Cars	Pickup Trucks	Semi Trucks, Buses	Vans, SUVs, Utility Vehicles	ATV (4W)	Motorcyclists	Pedestrians	Pedalcyclists	RVs	Total Fatalities
Bernalillo	18	4	-	14	-	32	39	6	-	113
Catron	-	1	-	-	-	-	-	-	-	1
Chaves	5	1	-	3	1	-	-	-	-	10
Cibola	3	2	1	3	1	-	2	-	-	12
Colfax	-	-	-	-	-	-	-	-	-	-
Curry	1	2	-	-	-	2	-	1	-	6
De Baca	-	-	-	-	-	-	-	-	-	-
Doña Ana	9	2	2	10	-	2	9	1	-	35
Eddy	2	6	-	3	-	5	4	-	1	21
Grant	3	-	2	1	1	-	1	-	-	8
Guadalupe	2	2	4	1	-	-	1	-	-	10
Harding	-	-	1	-	-	-	-	-	-	1
Hidalgo	2	1	1	-	-	-	-	-	-	4
Lea	7	9	3	4	-	1	1	-	-	25
Lincoln	5	1	-	1	1	-	-	-	-	8
Los Alamos	-	-	-	-	-	-	-	-	-	-
Luna	6	2	1	2	-	-	1	-	1	13
McKinley	7	10	2	8	-	3	6	-	2	38
Mora	1	-	-	2	1	-	1	-	-	5
Otero	2	4	-	-	-	2	4	-	-	12
Quay	-	1	1	2	-	-	1	-	-	5
Rio Arriba	3	3	1	2	-	2	2	1	-	14
Roosevelt	4	-	-	2	-	-	-	-	-	6
San Juan	8	4	-	3	-	5	6	3	-	29
San Miguel	6	-	-	5	-	1	1	-	-	13
Sandoval	5	1	-	1	-	5	1	-	-	13
Santa Fe	4	2	-	3	-	1	5	1	-	16
Sierra	1	1	-	1	-	-	-	-	-	3
Socorro	3	1	-	2	-	-	1	-	-	7
Taos	2	2	-	1	-	4	1	-	-	10
Torrance	1	3	1	1	-	-	1	-	1	8
Union	1	-	-	-	-	1	-	-	-	2
Valencia	4	-	1	1	-	3	-	-	-	9
Total	115	65	21	76	5	69	88	13	5	457

Motorcycle ¹ Fatalities by County and Month, 2025 to Date														
County	Jan.	Feb.	Mar.	Apr.	May	Jun.	Jul.	Aug.	Sep.	Oct.	Nov.	Dec.	2025 Total, to Date	2024 Total, to Date
Bernalillo	2	3	5	4	3	3	-	3	1	4	3	1	32	17
Catron	-	-	-	-	-	-	-	-	-	-	-	-	-	-
Chaves	-	-	-	-	-	-	-	-	-	-	-	-	-	1
Cibola	-	-	-	-	-	-	-	-	-	-	-	-	-	-
Colfax	-	-	-	-	-	-	-	-	-	-	-	-	-	-
Curry	-	-	-	-	-	-	-	-	-	1	-	1	2	-
De Baca	-	-	-	-	-	-	-	-	-	-	-	-	-	-
Doña Ana	-	-	-	1	-	-	-	-	1	-	-	-	2	4
Eddy	-	-	1	1	1	-	-	1	-	1	-	-	5	4
Grant	-	-	-	-	-	-	-	-	-	-	-	-	-	1
Guadalupe	-	-	-	-	-	-	-	-	-	-	-	-	-	1
Harding	-	-	-	-	-	-	-	-	-	-	-	-	-	-
Hidalgo	-	-	-	-	-	-	-	-	-	-	-	-	-	-
Lea	-	-	-	-	-	-	1	-	-	-	-	-	1	7
Lincoln	-	-	-	-	-	-	-	-	-	-	-	-	-	-
Los Alamos	-	-	-	-	-	-	-	-	-	-	-	-	-	-
Luna	-	-	-	-	-	-	-	-	-	-	-	-	-	-
McKinley	-	-	-	-	2	-	1	-	-	-	-	-	3	1
Mora	-	-	-	-	-	-	-	-	-	-	-	-	-	-
Otero	-	-	-	-	1	-	-	-	-	-	-	1	2	1
Quay	-	-	-	-	-	-	-	-	-	-	-	-	-	1
Rio Arriba	-	-	-	-	-	-	-	1	1	-	-	-	2	2
Roosevelt	-	-	-	-	-	-	-	-	-	-	-	-	-	1
San Juan	-	-	1	-	-	-	1	-	1	-	2	-	5	4
San Miguel	-	-	-	1	-	-	-	-	-	-	-	-	1	1
Sandoval	-	-	-	1	1	1	2	-	-	-	-	-	5	3
Santa Fe	-	-	-	-	-	-	-	-	-	-	-	1	1	-
Sierra	-	-	-	-	-	-	-	-	-	-	-	-	-	-
Socorro	-	-	-	-	-	-	-	-	-	-	-	-	-	2
Taos	-	-	-	-	2	-	-	-	-	2	-	-	4	1
Torrance	-	-	-	-	-	-	-	-	-	-	-	-	-	1
Union	-	-	-	-	-	-	-	1	-	-	-	-	1	-
Valencia	-	-	2	-	-	-	-	-	-	-	-	1	3	4
Total	2	3	9	8	10	4	5	6	4	8	5	5	69	57

¹ The term motorcycle includes motorized scooters and mopeds, but excludes 4W/ATVs.

Motorcycle ¹ Fatalities by County Relating to Alcohol, Helmet Use, and Age, 2025 to Date							
County	Alcohol-involved Fatalities ²		Unhelmeted Fatalities		Fatalities Under Age 30 (Ages 15-29)		Total Fatalities
	Count	Percent ³	Count	Percent ³	Count	Percent ³	
Bernalillo	3	9.4%	15	46.9%	2	6.3%	32
Catron	-	-	-	-	-	-	-
Chaves	-	-	-	-	-	-	-
Cibola	-	-	-	-	-	-	-
Colfax	-	-	-	-	-	-	-
Curry	-	0.0%	1	50.0%	-	0.0%	2
De Baca	-	-	-	-	-	-	-
Doña Ana	2	100.0%	1	50.0%	-	0.0%	2
Eddy	-	0.0%	2	40.0%	-	0.0%	5
Grant	-	-	-	-	-	-	-
Guadalupe	-	-	-	-	-	-	-
Harding	-	-	-	-	-	-	-
Hidalgo	-	-	-	-	-	-	-
Lea	-	0.0%	1	100.0%	-	0.0%	1
Lincoln	-	-	-	-	-	-	-
Los Alamos	-	-	-	-	-	-	-
Luna	-	-	-	-	-	-	-
McKinley	-	0.0%	3	100.0%	-	0.0%	3
Mora	-	-	-	-	-	-	-
Otero	1	50.0%	-	0.0%	-	0.0%	2
Quay	-	-	-	-	-	-	-
Rio Arriba	1	50.0%	1	50.0%	-	0.0%	2
Roosevelt	-	-	-	-	-	-	-
San Juan	1	20.0%	2	40.0%	1	20.0%	5
San Miguel	1	100.0%	1	100.0%	-	0.0%	1
Sandoval	2	40.0%	2	40.0%	-	0.0%	5
Santa Fe	-	0.0%	1	100.0%	-	0.0%	1
Sierra	-	-	-	-	-	-	-
Socorro	-	-	-	-	-	-	-
Taos	1	25.0%	2	50.0%	-	0.0%	4
Torrance	-	-	-	-	-	-	-
Union	-	0.0%	1	100.0%	-	0.0%	1
Valencia	-	0.0%	2	66.7%	-	0.0%	3
Total	12	0.0%	35	0.0%	3	0.0%	69

¹ The term motorcycle includes motorized scooters and mopeds, but excludes 4W/ATVs.

² All motorcycle fatalities in alcohol-involved crashes.

³ Percentage based on total motorcycle fatalities in the county.

Fatalities by Maintenance District and Month, 2025 to Date													
District	Jan.	Feb.	Mar.	Apr.	May	Jun.	Jul.	Aug.	Sep.	Oct.	Nov.	Dec.	Total
District 1	7	5	5	8	9	5	2	6	4	6	9	4	70
District 2	10	5	6	12	6	4	5	9	7	13	4	7	88
District 3	6	11	12	10	10	11	17	9	12	14	12	8	132
District 4	3	3	3	5	1	6	1	3	3	2	2	4	36
District 5	4	5	6	10	7	3	8	7	6	6	9	6	77
District 6	5	5	5	3	3	1	8	2	7	3	3	9	54
Total	35	34	37	48	36	30	41	36	39	44	39	38	457

Fatalities by Maintenance District Relating to Alcohol, Belt Use, and Under 21 BAC, 2025 to Date							
District	Alcohol-involved Fatalities ¹		Unbelted Fatalities		Under 21 (15-20) Fatalities with a BAC ²		Total Fatalities
	Count	Percent ³	Count	Percent ³	Count	Percent ³	
District 1	15	21.4%	26	37.1%	-	0.0%	70
District 2	26	29.5%	29	33.0%	3	3.4%	88
District 3	32	24.2%	25	18.9%	4	3.0%	132
District 4	5	13.9%	10	27.8%	-	0.0%	36
District 5	33	42.9%	23	29.9%	4	5.2%	77
District 6	21	38.9%	25	46.3%	-	0.0%	54
Total	132	28.9%	138	30.2%	11	2.4%	457

¹ All fatalities in alcohol-involved crashes.

² Fatalities under 21 with a reported BAC (Blood Alcohol Content) above zero.

³ Percentage based on total fatalities in the district