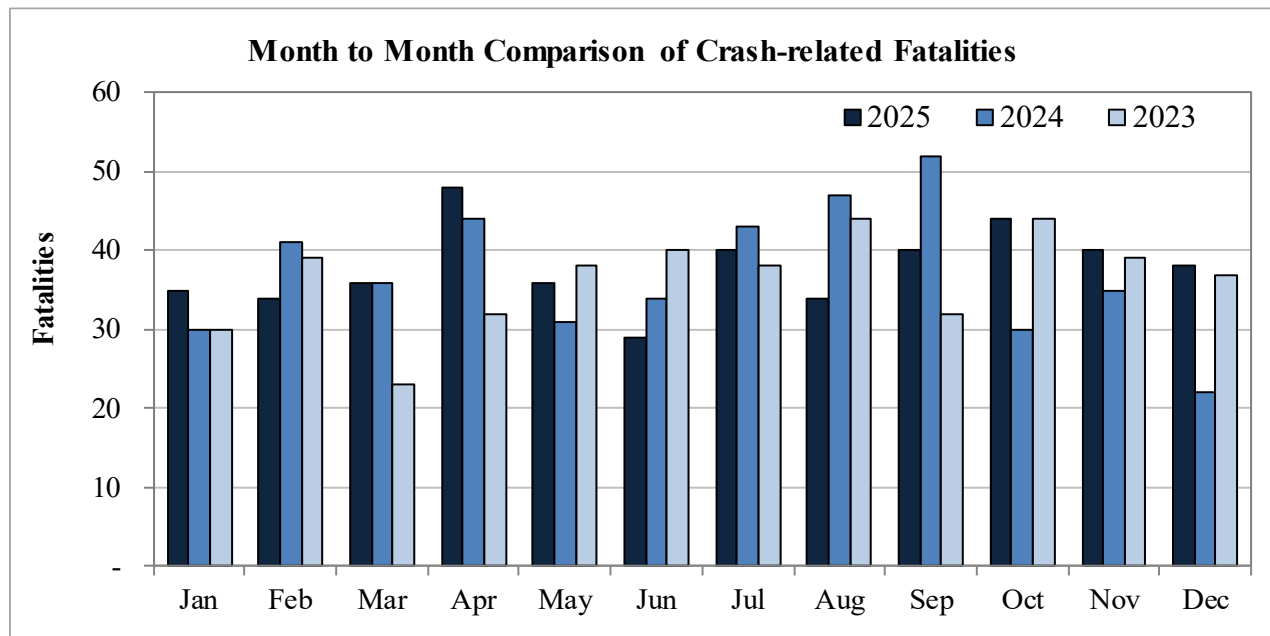


New Mexico Monthly Traffic Fatality Report, 2025

Produced for the New Mexico Department of Transportation, Traffic Safety Division, Traffic Records Bureau,
Under Contract No. 6380 by UNM Geospatial and Population Studies, Traffic Research Unit (TRU)

Fatalities by Month 2025, 2024, 2023 Year to Date			
Month	2025	2024	2023
January	35	30	30
February	34	41	39
March	36	36	23
April	48	44	32
May	36	31	38
June	29	34	40
July	40	43	38
August	34	47	44
September	40	52	32
October	44	30	44
November	40	35	39
December	38	22	37
Total	454	445	436



Fatalities by Vehicle Type, 2025 to Date										
Month in 2025	Cars	Pickup Trucks	Semi Trucks, Buses	Vans, SUVs, Utility Vehicles	ATV (4W)	Motorcyclists	Pedestrians	Pedalcyclists	RVs	Total Fatalities
January	13	7	1	5	-	2	5	2	-	35
February	5	6	2	6	1	2	9	3	-	34
March	4	6	3	8	1	9	5	-	-	36
April	11	6	2	11	2	8	5	3	-	48
May	9	6	1	7	-	10	3	-	-	36
June	8	4	4	4	1	4	3	1	-	29
July	6	4	2	8	-	5	12	2	1	40
August	10	8	1	5	-	6	3	1	-	34
September	12	7	-	9	-	4	8	-	-	40
October	8	4	2	9	1	8	11	1	-	44
November	9	4	1	6	-	5	14	1	-	40
December	10	5	2	6	-	5	10	-	-	38
Total	105	67	21	84	6	68	88	14	1	454

Fatalities by Alcohol Involvement ¹ , 2025 to Date				
Month in 2025	Alcohol-involved ¹	Not Alcohol-involved	Alcohol Unknown	Total Fatalities
January	10	25	-	35
February	16	18	-	34
March	15	21	-	36
April	15	33	-	48
May	17	19	-	36
June	7	22	-	29
July	11	29	-	40
August	11	23	-	34
September	13	27	-	40
October	14	30	-	44
November	16	24	-	40
December	10	28	-	38
Total	155	299	-	454

¹ All fatalities in alcohol-involved crashes.

Alcohol-involved Fatalities ¹ , 2025 to Date			
Month	2025	2024	2023
January	10	12	8
February	16	15	14
March	15	13	9
April	15	14	14
May	17	13	17
June	7	18	14
July	11	22	13
August	11	21	19
September	13	20	9
October	14	11	13
November	16	11	12
December	10	8	16
Total	155	178	158

¹ All fatalities in alcohol-involved crashes.

Fatalities Under 21, 2025 to Date	
Age	Fatalities
1	1
2	-
3	-
4	-
5	-
6	-
7	-
8	-
9	-
10	-
11	-
12	2
13	-
14	1
15	4
16	5
17	6
18	9
19	14
20	9
Total	51

Month in 2025	Total Fatalities, 2025 to Date	Alcohol-involved Fatalities ¹ , 2025 to Date			
		Motorcyclist Fatalities	Percent Motorcyclist Fatalities	Pedestrian Fatalities	Percent Pedestrian Fatalities
January	35	-	0.0%	3	8.6%
February	34	-	0.0%	4	11.8%
March	36	5	13.9%	1	2.8%
April	48	4	8.3%	1	2.1%
May	36	2	5.6%	2	5.6%
June	29	1	3.4%	-	0.0%
July	40	1	2.5%	5	12.5%
August	34	1	2.9%	1	2.9%
September	40	1	2.5%	2	5.0%
October	44	1	2.3%	5	11.4%
November	40	1	2.5%	5	12.5%
December	38	-	0.0%	2	5.3%
Total	454	17	3.7%	31	6.8%

¹ All fatalities in alcohol-involved crashes.

Alcohol-involved Fatalities ¹ , 2025 to Date		
Alcohol-involved	155	34%
Not Alcohol-involved	299	66%
Alcohol Unknown	-	-
Total	454	100%

¹ All fatalities in alcohol-involved crashes.

Motorcyclist Helmet Usage ¹ , 2025 to Date	
Helmet Usage	Fatalities
Yes	37
No	31
Unknown	-
Total	68

¹ Excludes 4W/ATV.

Fatalities by Vehicle ¹ Occupant Seat Belt Usage, 2025 to Date				
Restraint	Yes	No	Unknown	Total
Seat Belt	120	134	2	256

¹ Total vehicle occupant fatalities. Excludes motorcyclist, 4W/ATV, semi truck, pedestrian and pedalcyclist fatalities.

Alcohol-involved Fatalities ¹ , 2025 to Date			
Month	2025	2024	2023
January	10	12	8
February	16	15	14
March	15	13	9
April	15	14	14
May	17	13	17
June	7	18	14
July	11	22	13
August	11	21	19
September	13	20	9
October	14	11	13
November	16	11	12
December	10	8	16
Total	155	178	158

¹ All fatalities in alcohol-involved crashes.

Fatalities by Residency and Location, 2025 to Date				
Location	New Mexico Resident	Non-Resident	Unknown Residency	Total
Rural	176	82	-	258
Urban	178	16	1	195
Unknown	1	-	-	1
Total	355	98	1	454

Month to Month Comparison of Fatalities by Alcohol Involvement, 2025 to Date												
Month	2025 Fatalities				2024 Fatalities				2023 Fatalities			
	Alcohol-involved ¹			Total	Alcohol-involved ¹			Total	Alcohol-involved ¹			Total
	Yes	No	Unk		Yes	No	Unk		Yes	No	Unk	
January	10	25	-	35	12	18	-	30	8	22	-	30
February	16	18	-	34	15	26	-	41	14	25	-	39
March	15	21	-	36	13	23	-	36	9	14	-	23
April	15	33	-	48	14	30	-	44	14	18	-	32
May	17	19	-	36	13	18	-	31	17	21	-	38
June	7	22	-	29	18	16	-	34	14	26	-	40
July	11	29	-	40	22	21	-	43	13	25	-	38
August	11	23	-	34	21	26	-	47	19	25	-	44
September	13	27	-	40	20	32	-	52	9	23	-	32
October	14	30	-	44	11	19	-	30	13	31	-	44
November	16	24	-	40	11	24	-	35	12	27	-	39
December	10	28	-	38	8	14	-	22	16	21	-	37
Total	155	299	-	454	178	267	-	445	158	278	-	436

¹ Identifies whether the fatality resulted from an alcohol-involved crash.

Month to Month Comparison of Fatalities by Seat Belt Usage, 2025 to Date												
Month	2025 Fatalities				2024 Fatalities				2023 Fatalities			
	Seat Belt ¹			Total ²	Seat Belt ¹			Total ²	Seat Belt ¹			Total ²
	Yes	No	Unk		Yes	No	Unk		Yes	No	Unk	
January	15	10	-	25	7	9	-	16	8	11	-	19
February	3	14	-	17	7	18	-	25	6	11	-	17
March	5	13	-	18	5	12	-	17	5	4	1	10
April	13	15	-	28	9	16	-	25	8	15	-	23
May	7	15	-	22	-	11	-	11	3	18	-	21
June	10	6	-	16	8	16	-	24	8	15	-	23
July	11	7	-	18	8	17	-	25	8	10	-	18
August	11	10	2	23	10	14	-	24	11	13	-	24
September	12	16	-	28	13	18	-	31	1	10	-	11
October	9	12	-	21	11	8	-	19	7	16	-	23
November	9	10	-	19	8	10	-	18	9	13	-	22
December	15	6	-	21	6	11	-	17	9	15	-	24
Total	120	134	2	256	92	160	-	252	83	151	1	235

¹ Identifies whether a vehicle occupant was belted (Yes), unbelted (No), or belt usage was not reported (Unk).

² Total vehicle occupant fatalities. Excludes motorcyclist, 4W/ATV, semi truck, pedestrian and pedalcyclist fatalities.

Fatalities by County and Month, 2025 To Date														
County	Jan.	Feb.	Mar.	Apr.	May	Jun.	Jul.	Aug.	Sep.	Oct.	Nov.	Dec.	2025 Total, to Date	2024 Total, to Date
Bernalillo	5	11	9	8	8	7	14	9	12	12	10	6	111	122
Catron	-	-	-	-	-	-	-	-	-	-	-	1	1	1
Chaves	1	1	-	-	1	1	2	-	1	1	1	-	9	14
Cibola	1	-	3	1	-	1	2	1	2	-	1	-	12	8
Colfax	-	-	-	-	-	-	-	-	-	-	-	-	-	5
Curry	-	1	-	-	-	-	-	-	-	2	-	3	6	3
De Baca	-	-	-	1	-	-	-	-	-	-	-	-	1	2
Doña Ana	3	2	1	5	3	2	2	3	3	4	5	2	35	25
Eddy	-	-	3	4	3	1	-	1	3	4	1	-	20	21
Grant	-	-	-	1	2	-	-	-	-	1	1	1	6	7
Guadalupe	1	-	1	1	-	3	-	1	2	1	-	-	10	11
Harding	-	-	-	-	-	-	-	-	-	-	1	-	1	-
Hidalgo	-	3	-	-	-	1	-	-	-	-	2	-	6	3
Lea	7	-	1	6	-	2	1	4	-	-	1	3	25	31
Lincoln	2	1	-	1	-	-	-	1	-	2	-	-	7	7
Los Alamos	-	-	-	-	-	-	-	-	-	-	-	-	-	2
Luna	2	-	3	1	2	2	-	-	1	1	-	1	13	3
McKinley	4	5	2	1	3	-	5	-	5	3	2	8	38	20
Mora	-	-	-	2	-	-	-	-	1	1	-	1	5	2
Otero	-	1	-	-	1	-	2	1	3	2	1	1	12	13
Quay	1	-	1	-	1	1	1	-	-	-	-	-	5	4
Rio Arriba	-	1	2	4	1	-	-	2	2	1	1	-	14	11
Roosevelt	-	1	1	-	1	-	-	1	-	2	-	-	6	4
San Juan	3	-	1	3	3	-	5	2	3	1	5	3	29	25
San Miguel	-	3	1	2	-	2	-	1	-	-	1	3	13	9
Sandoval	1	-	1	3	1	2	2	1	-	2	1	-	14	20
Santa Fe	1	3	1	1	-	4	1	-	-	1	1	2	15	18
Sierra	1	-	1	1	-	-	-	-	-	-	-	-	3	4
Socorro	1	-	-	-	2	-	-	3	-	-	1	-	7	15
Taos	-	1	2	-	3	-	-	1	-	2	2	-	11	9
Torrance	-	-	-	1	-	-	2	1	1	1	1	1	8	14
Union	1	-	-	-	-	-	-	1	-	-	-	-	2	1
Valencia	-	-	2	1	1	-	1	-	1	-	1	2	9	11
Total	35	34	36	48	36	29	40	34	40	44	40	38	454	445

Fatalities by County Relating to Alcohol, Belt Use, and Under 21 BAC, 2025 to Date							
County	Alcohol-involved Fatalities ¹		Unbelted Fatalities		Under 21 (15-20) with a BAC ²		Total Fatalities
	Count	Percent ³	Count	Percent ³	Count	Percent ³	
Bernalillo	35	31.5%	16	14.4%	6	5.4%	111
Catron	1	100.0%	1	100.0%	-	0.0%	1
Chaves	3	33.3%	3	33.3%	1	11.1%	9
Cibola	5	41.7%	6	50.0%	-	0.0%	12
Colfax	-	-	-	-	-	-	-
Curry	1	16.7%	2	33.3%	-	0.0%	6
De Baca	-	0.0%	1	100.0%	-	0.0%	1
Doña Ana	13	37.1%	15	42.9%	-	0.0%	35
Eddy	5	25.0%	6	30.0%	-	0.0%	20
Grant	-	0.0%	1	16.7%	-	0.0%	6
Guadalupe	-	0.0%	3	30.0%	-	0.0%	10
Harding	-	0.0%	-	0.0%	-	0.0%	1
Hidalgo	-	0.0%	2	33.3%	-	0.0%	6
Lea	7	28.0%	7	28.0%	1	4.0%	25
Lincoln	2	28.6%	2	28.6%	-	0.0%	7
Los Alamos	-	-	-	-	-	-	-
Luna	1	7.7%	3	23.1%	-	0.0%	13
McKinley	18	47.4%	18	47.4%	-	0.0%	38
Mora	-	0.0%	1	20.0%	-	0.0%	5
Otero	4	33.3%	4	33.3%	-	0.0%	12
Quay	1	20.0%	-	0.0%	1	20.0%	5
Rio Arriba	5	35.7%	6	42.9%	-	0.0%	14
Roosevelt	3	50.0%	5	83.3%	-	0.0%	6
San Juan	19	65.5%	6	20.7%	4	13.8%	29
San Miguel	4	30.8%	4	30.8%	-	0.0%	13
Sandoval	7	50.0%	5	35.7%	-	0.0%	14
Santa Fe	3	20.0%	3	20.0%	-	0.0%	15
Sierra	-	0.0%	2	66.7%	-	0.0%	3
Socorro	4	57.1%	2	28.6%	-	0.0%	7
Taos	5	45.5%	3	27.3%	-	0.0%	11
Torrance	2	25.0%	3	37.5%	-	0.0%	8
Union	1	50.0%	1	50.0%	-	0.0%	2
Valencia	6	66.7%	3	33.3%	1	11.1%	9
Total	155	34.1%	134	29.5%	14	3.1%	454

¹ All fatalities in alcohol-involved crashes.

² Fatalities under 21 with a reported BAC (Blood Alcohol Content) above zero.

³ Percentage based on total fatalities in the county.

Fatalities by County and Vehicle Type, 2025 to Date										
County	Cars	Pickup Trucks	Semi Trucks, Buses	Vans, SUVs, Utility Vehicles	ATV (4W)	Motorcyclists	Pedestrians	Pedalcyclists	RVs	Total Fatalities
Bernalillo	13	5	-	17	-	31	38	7	-	111
Catron	-	1	-	-	-	-	-	-	-	1
Chaves	5	-	-	3	1	-	-	-	-	9
Cibola	5	2	1	1	1	-	2	-	-	12
Colfax	-	-	-	-	-	-	-	-	-	-
Curry	1	2	-	-	-	2	-	1	-	6
De Baca	-	1	-	-	-	-	-	-	-	1
Doña Ana	9	3	2	9	-	2	9	1	-	35
Eddy	1	6	-	3	1	5	4	-	-	20
Grant	1	-	-	3	1	-	1	-	-	6
Guadalupe	2	2	4	1	-	-	1	-	-	10
Harding	-	-	1	-	-	-	-	-	-	1
Hidalgo	2	1	3	-	-	-	-	-	-	6
Lea	9	9	3	2	-	1	1	-	-	25
Lincoln	5	1	-	-	1	-	-	-	-	7
Los Alamos	-	-	-	-	-	-	-	-	-	-
Luna	6	2	1	3	-	-	1	-	-	13
McKinley	4	10	2	12	-	3	7	-	-	38
Mora	1	-	-	2	1	-	1	-	-	5
Otero	2	4	-	-	-	2	4	-	-	12
Quay	-	1	1	2	-	-	1	-	-	5
Rio Arriba	3	3	1	2	-	2	2	1	-	14
Roosevelt	4	-	-	2	-	-	-	-	-	6
San Juan	7	4	-	4	-	5	6	3	-	29
San Miguel	5	-	-	6	-	1	1	-	-	13
Sandoval	5	2	-	1	-	5	1	-	-	14
Santa Fe	4	1	-	3	-	1	5	1	-	15
Sierra	1	1	-	1	-	-	-	-	-	3
Socorro	3	1	-	2	-	-	1	-	-	7
Taos	1	2	-	3	-	4	1	-	-	11
Torrance	1	3	1	1	-	-	1	-	1	8
Union	1	-	-	-	-	1	-	-	-	2
Valencia	4	-	1	1	-	3	-	-	-	9
Total	105	67	21	84	6	68	88	14	1	454

Motorcycle ¹ Fatalities by County and Month, 2025 to Date														
County	Jan.	Feb.	Mar.	Apr.	May	Jun.	Jul.	Aug.	Sep.	Oct.	Nov.	Dec.	2025 Total, to Date	2024 Total, to Date
Bernalillo	2	2	5	4	3	3	-	3	1	4	3	1	31	17
Catron	-	-	-	-	-	-	-	-	-	-	-	-	-	-
Chaves	-	-	-	-	-	-	-	-	-	-	-	-	-	1
Cibola	-	-	-	-	-	-	-	-	-	-	-	-	-	-
Colfax	-	-	-	-	-	-	-	-	-	-	-	-	-	-
Curry	-	-	-	-	-	-	-	-	-	1	-	1	2	-
De Baca	-	-	-	-	-	-	-	-	-	-	-	-	-	-
Doña Ana	-	-	-	1	-	-	-	-	1	-	-	-	2	4
Eddy	-	-	1	1	1	-	-	1	-	1	-	-	5	4
Grant	-	-	-	-	-	-	-	-	-	-	-	-	-	1
Guadalupe	-	-	-	-	-	-	-	-	-	-	-	-	-	1
Harding	-	-	-	-	-	-	-	-	-	-	-	-	-	-
Hidalgo	-	-	-	-	-	-	-	-	-	-	-	-	-	-
Lea	-	-	-	-	-	-	1	-	-	-	-	-	1	7
Lincoln	-	-	-	-	-	-	-	-	-	-	-	-	-	-
Los Alamos	-	-	-	-	-	-	-	-	-	-	-	-	-	-
Luna	-	-	-	-	-	-	-	-	-	-	-	-	-	-
McKinley	-	-	-	-	2	-	1	-	-	-	-	-	3	1
Mora	-	-	-	-	-	-	-	-	-	-	-	-	-	-
Otero	-	-	-	-	1	-	-	-	-	-	-	1	2	1
Quay	-	-	-	-	-	-	-	-	-	-	-	-	-	1
Rio Arriba	-	-	-	-	-	-	-	1	1	-	-	-	2	2
Roosevelt	-	-	-	-	-	-	-	-	-	-	-	-	-	1
San Juan	-	-	1	-	-	-	1	-	1	-	2	-	5	4
San Miguel	-	-	-	1	-	-	-	-	-	-	-	-	1	1
Sandoval	-	-	-	1	1	1	2	-	-	-	-	-	5	3
Santa Fe	-	-	-	-	-	-	-	-	-	-	-	1	1	-
Sierra	-	-	-	-	-	-	-	-	-	-	-	-	-	-
Socorro	-	-	-	-	-	-	-	-	-	-	-	-	-	2
Taos	-	-	-	-	2	-	-	-	-	2	-	-	4	1
Torrance	-	-	-	-	-	-	-	-	-	-	-	-	-	1
Union	-	-	-	-	-	-	-	1	-	-	-	-	1	-
Valencia	-	-	2	-	-	-	-	-	-	-	-	1	3	4
Total	2	2	9	8	10	4	5	6	4	8	5	5	68	57

¹ The term motorcycle includes motorized scooters and mopeds, but excludes 4W/ATVs.

Motorcycle ¹ Fatalities by County Relating to Alcohol, Helmet Use, and Age, 2025 to Date							
County	Alcohol-involved Fatalities ²		Unhelmeted Fatalities		Fatalities Under Age 30 (Ages 15-29)		Total Fatalities
	Count	Percent ³	Count	Percent ³	Count	Percent ³	
Bernalillo	5	16.1%	12	38.7%	3	9.7%	31
Catron	-	-	-	-	-	-	-
Chaves	-	-	-	-	-	-	-
Cibola	-	-	-	-	-	-	-
Colfax	-	-	-	-	-	-	-
Curry	-	0.0%	1	50.0%	-	0.0%	2
De Baca	-	-	-	-	-	-	-
Doña Ana	2	100.0%	1	50.0%	-	0.0%	2
Eddy	-	0.0%	2	40.0%	-	0.0%	5
Grant	-	-	-	-	-	-	-
Guadalupe	-	-	-	-	-	-	-
Harding	-	-	-	-	-	-	-
Hidalgo	-	-	-	-	-	-	-
Lea	-	0.0%	1	100.0%	-	0.0%	1
Lincoln	-	-	-	-	-	-	-
Los Alamos	-	-	-	-	-	-	-
Luna	-	-	-	-	-	-	-
McKinley	-	0.0%	2	66.7%	-	0.0%	3
Mora	-	-	-	-	-	-	-
Otero	-	0.0%	-	0.0%	-	0.0%	2
Quay	-	-	-	-	-	-	-
Rio Arriba	1	50.0%	1	50.0%	-	0.0%	2
Roosevelt	-	-	-	-	-	-	-
San Juan	3	60.0%	2	40.0%	2	40.0%	5
San Miguel	1	100.0%	1	100.0%	-	0.0%	1
Sandoval	2	40.0%	2	40.0%	-	0.0%	5
Santa Fe	-	0.0%	1	100.0%	-	0.0%	1
Sierra	-	-	-	-	-	-	-
Socorro	-	-	-	-	-	-	-
Taos	1	25.0%	2	50.0%	-	0.0%	4
Torrance	-	-	-	-	-	-	-
Union	-	0.0%	1	100.0%	-	0.0%	1
Valencia	2	66.7%	2	66.7%	-	0.0%	3
Total	17	0.0%	31	0.0%	5	0.0%	68

¹ The term motorcycle includes motorized scooters and mopeds, but excludes 4W/ATVs.

² All motorcycle fatalities in alcohol-involved crashes.

³ Percentage based on total motorcycle fatalities in the county.

Fatalities by Maintenance District and Month, 2025 to Date													
District	Jan.	Feb.	Mar.	Apr.	May	Jun.	Jul.	Aug.	Sep.	Oct.	Nov.	Dec.	Total
District 1	7	5	5	8	9	5	2	6	4	6	9	4	70
District 2	10	5	5	12	6	4	5	8	7	13	4	7	86
District 3	6	11	12	11	10	9	16	9	13	14	12	8	131
District 4	3	3	3	5	1	6	1	3	3	2	2	4	36
District 5	4	5	6	9	7	4	8	6	6	6	10	6	77
District 6	5	5	5	3	3	1	8	2	7	3	3	9	54
Total	35	34	36	48	36	29	40	34	40	44	40	38	454

Fatalities by Maintenance District Relating to Alcohol, Belt Use, and Under 21 BAC, 2025 to Date							
District	Alcohol-involved Fatalities ¹		Unbelted Fatalities		Under 21 (15-20) Fatalities with a BAC ²		Total Fatalities
	Count	Percent ³	Count	Percent ³	Count	Percent ³	
District 1	18	25.7%	25	35.7%	-	0.0%	70
District 2	25	29.1%	30	34.9%	2	2.3%	86
District 3	47	35.9%	23	17.6%	7	5.3%	131
District 4	6	16.7%	9	25.0%	1	2.8%	36
District 5	34	44.2%	21	27.3%	4	5.2%	77
District 6	25	46.3%	26	48.1%	-	0.0%	54
Total	155	34.1%	134	29.5%	14	3.1%	454

¹ All fatalities in alcohol-involved crashes.

² Fatalities under 21 with a reported BAC (Blood Alcohol Content) above zero.

³ Percentage based on total fatalities in the district