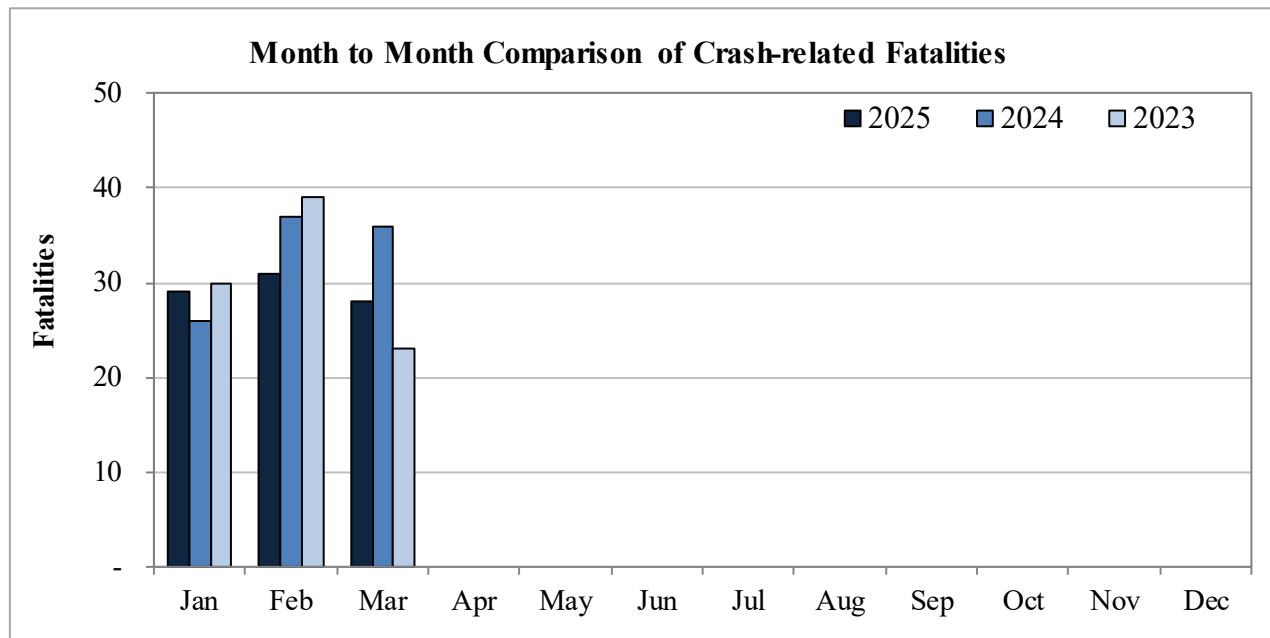


New Mexico Monthly Traffic Fatality Report, 2025

Produced for the New Mexico Department of Transportation, Traffic Safety Division, Traffic Records Bureau,
Under Contract No. 6380 by UNM Geospatial and Population Studies, Traffic Research Unit (TRU)

Fatalities by Month 2025, 2024, 2023 Year to Date			
Month	2025	2024	2023
January	29	26	30
February	31	37	39
March	28	36	23
April	-	-	-
May	-	-	-
June	-	-	-
July	-	-	-
August	-	-	-
September	-	-	-
October	-	-	-
November	-	-	-
December	-	-	-
Total	88	99	92



Fatalities by Vehicle Type, 2025 to Date										
Month in 2025	Cars	Pickup Trucks	Semi Trucks, Buses	Vans, SUVs, Utility Vehicles	ATV (4W)	Motorcyclists	Pedestrians	Pedalcyclists	RVs	Total Fatalities
January	9	5	1	7	-	2	3	2	-	29
February	6	5	2	4	1	3	8	2	-	31
March	7	1	1	5	1	9	4	-	-	28
April	-	-	-	-	-	-	-	-	-	-
May	-	-	-	-	-	-	-	-	-	-
June	-	-	-	-	-	-	-	-	-	-
July	-	-	-	-	-	-	-	-	-	-
August	-	-	-	-	-	-	-	-	-	-
September	-	-	-	-	-	-	-	-	-	-
October	-	-	-	-	-	-	-	-	-	-
November	-	-	-	-	-	-	-	-	-	-
December	-	-	-	-	-	-	-	-	-	-
Total	22	11	4	16	2	14	15	4	-	88

Fatalities by Alcohol Involvement ¹ , 2025 to Date				
Month in 2025	Alcohol-involved ¹	Not Alcohol-involved	Alcohol Unknown	Total Fatalities
January	3	26	-	29
February	6	25	-	31
March	1	27	-	28
April	-	-	-	-
May	-	-	-	-
June	-	-	-	-
July	-	-	-	-
August	-	-	-	-
September	-	-	-	-
October	-	-	-	-
November	-	-	-	-
December	-	-	-	-
Total	10	78	-	88

¹ All fatalities in alcohol-involved crashes.

Alcohol-involved Fatalities ¹ , 2025 to Date			
Month	2025	2024	2023
January	3	10	8
February	6	10	14
March	1	12	9
April	-	-	-
May	-	-	-
June	-	-	-
July	-	-	-
August	-	-	-
September	-	-	-
October	-	-	-
November	-	-	-
December	-	-	-
Total	10	32	31

¹ All fatalities in alcohol-involved crashes.

Fatalities Under 21, 2025 to Date	
Age	Fatalities
1	-
2	-
3	-
4	-
5	-
6	-
7	-
8	-
9	-
10	-
11	-
12	-
13	-
14	-
15	1
16	2
17	-
18	3
19	1
20	1
Total	8

Month in 2025	Total Fatalities, 2025 to Date	Alcohol-involved Fatalities ¹ , 2025 to Date			
		Motorcyclist Fatalities	Percent Motorcyclist Fatalities	Pedestrian Fatalities	Percent Pedestrian Fatalities
January	29	-	0.0%	-	0.0%
February	31	-	0.0%	2	6.5%
March	28	-	0.0%	-	0.0%
April	-	-	-	-	-
May	-	-	-	-	-
June	-	-	-	-	-
July	-	-	-	-	-
August	-	-	-	-	-
September	-	-	-	-	-
October	-	-	-	-	-
November	-	-	-	-	-
December	-	-	-	-	-
Total	88	-	0.0%	2	2.3%

¹ All fatalities in alcohol-involved crashes.

Alcohol-involved Fatalities ¹ , 2025 to Date		
Alcohol-involved	10	11%
Not Alcohol-involved	78	89%
Alcohol Unknown	-	-
Total	88	100%

¹ All fatalities in alcohol-involved crashes.

Motorcyclist Helmet Usage ¹ , 2025 to Date	
Helmet Usage	Fatalities
Yes	4
No	10
Unknown	-
Total	14

¹ Excludes 4W/ATV.

Fatalities by Vehicle ¹ Occupant Seat Belt Usage, 2025 to Date				
Restraint	Yes	No	Unknown	Total
Seat Belt	22	27	-	49

¹ Total vehicle occupant fatalities. Excludes motorcyclist, 4W/ATV, semi truck, pedestrian and pedalcyclist fatalities.

Senior (65+) Fatalities, 2025 to Date	
Year	Fatalities
2025	14
2024	16
2023	20

Fatalities by Residency and Location, 2025 to Date				
Location	New Mexico Resident	Non-Resident	Unknown Residency	Total
Rural	34	15	-	49
Urban	36	3	-	39
Unknown	-	-	-	-
Total	70	18	-	88

Month to Month Comparison of Fatalities by Alcohol Involvement, 2025 to Date												
Month	2025 Fatalities				2024 Fatalities				2023 Fatalities			
	Alcohol-involved ¹			Total	Alcohol-involved ¹			Total	Alcohol-involved ¹			Total
	Yes	No	Unk		Yes	No	Unk		Yes	No	Unk	
January	3	26	-	29	10	16	-	26	8	22	-	30
February	6	25	-	31	10	27	-	37	14	25	-	39
March	1	27	-	28	12	24	-	36	9	14	-	23
April	-	-	-	-	-	-	-	-	-	-	-	-
May	-	-	-	-	-	-	-	-	-	-	-	-
June	-	-	-	-	-	-	-	-	-	-	-	-
July	-	-	-	-	-	-	-	-	-	-	-	-
August	-	-	-	-	-	-	-	-	-	-	-	-
September	-	-	-	-	-	-	-	-	-	-	-	-
October	-	-	-	-	-	-	-	-	-	-	-	-
November	-	-	-	-	-	-	-	-	-	-	-	-
December	-	-	-	-	-	-	-	-	-	-	-	-
Total	10	78	-	88	32	67	-	99	31	61	-	92

¹ Identifies whether the fatality resulted from an alcohol-involved crash.

Month to Month Comparison of Fatalities by Seat Belt Usage, 2025 to Date												
Month	2025 Fatalities				2024 Fatalities				2023 Fatalities			
	Seat Belt ¹			Total ²	Seat Belt ¹			Total ²	Seat Belt ¹			Total ²
	Yes	No	Unk		Yes	No	Unk		Yes	No	Unk	
January	15	6	-	21	6	9	-	15	8	11	-	19
February	4	11	-	15	7	16	-	23	6	11	-	17
March	3	10	-	13	5	12	-	17	5	4	1	10
April	-	-	-	-	-	-	-	-	-	-	-	-
May	-	-	-	-	-	-	-	-	-	-	-	-
June	-	-	-	-	-	-	-	-	-	-	-	-
July	-	-	-	-	-	-	-	-	-	-	-	-
August	-	-	-	-	-	-	-	-	-	-	-	-
September	-	-	-	-	-	-	-	-	-	-	-	-
October	-	-	-	-	-	-	-	-	-	-	-	-
November	-	-	-	-	-	-	-	-	-	-	-	-
December	-	-	-	-	-	-	-	-	-	-	-	-
Total	22	27	-	49	18	37	-	55	19	26	1	46

¹ Identifies whether a vehicle occupant was belted (Yes), unbelted (No), or belt usage was not reported (Unk).

² Total vehicle occupant fatalities. Excludes motorcyclist, 4W/ATV, semi truck, pedestrian and pedalcyclist fatalities.

Fatalities by County and Month, 2025 To Date														
County	Jan.	Feb.	Mar.	Apr.	May	Jun.	Jul.	Aug.	Sep.	Oct.	Nov.	Dec.	2025 Total, to Date	2024 Total, to Date
Bernalillo	4	10	9	-	-	-	-	-	-	-	-	-	23	34
Catron	-	-	-	-	-	-	-	-	-	-	-	-	-	1
Chaves	1	1	-	-	-	-	-	-	-	-	-	-	2	5
Cibola	-	-	2	-	-	-	-	-	-	-	-	-	2	1
Colfax	-	-	-	-	-	-	-	-	-	-	-	-	-	1
Curry	-	1	-	-	-	-	-	-	-	-	-	-	1	2
De Baca	-	-	-	-	-	-	-	-	-	-	-	-	-	1
Doña Ana	3	2	-	-	-	-	-	-	-	-	-	-	5	6
Eddy	-	-	3	-	-	-	-	-	-	-	-	-	3	5
Grant	-	3	-	-	-	-	-	-	-	-	-	-	3	2
Guadalupe	1	-	1	-	-	-	-	-	-	-	-	-	2	3
Harding	-	-	-	-	-	-	-	-	-	-	-	-	-	-
Hidalgo	-	-	-	-	-	-	-	-	-	-	-	-	-	1
Lea	6	-	-	-	-	-	-	-	-	-	-	-	6	5
Lincoln	1	1	-	-	-	-	-	-	-	-	-	-	2	1
Los Alamos	-	-	-	-	-	-	-	-	-	-	-	-	-	1
Luna	2	-	3	-	-	-	-	-	-	-	-	-	5	1
McKinley	3	5	1	-	-	-	-	-	-	-	-	-	9	2
Mora	-	-	-	-	-	-	-	-	-	-	-	-	-	-
Otero	-	1	-	-	-	-	-	-	-	-	-	-	1	2
Quay	1	-	-	-	-	-	-	-	-	-	-	-	1	1
Rio Arriba	-	-	1	-	-	-	-	-	-	-	-	-	1	3
Roosevelt	-	1	1	-	-	-	-	-	-	-	-	-	2	-
San Juan	2	-	1	-	-	-	-	-	-	-	-	-	3	6
San Miguel	-	2	-	-	-	-	-	-	-	-	-	-	2	1
Sandoval	1	-	1	-	-	-	-	-	-	-	-	-	2	3
Santa Fe	1	3	1	-	-	-	-	-	-	-	-	-	5	5
Sierra	1	-	1	-	-	-	-	-	-	-	-	-	2	-
Socorro	1	-	-	-	-	-	-	-	-	-	-	-	1	2
Taos	-	1	1	-	-	-	-	-	-	-	-	-	2	2
Torrance	-	-	-	-	-	-	-	-	-	-	-	-	-	1
Union	1	-	-	-	-	-	-	-	-	-	-	-	1	-
Valencia	-	-	2	-	-	-	-	-	-	-	-	-	2	1
Total	29	31	28	-	-	-	-	-	-	-	-	-	88	99

Fatalities by County Relating to Alcohol, Belt Use, and Under 21 BAC, 2025 to Date							
County	Alcohol-involved Fatalities ¹		Unbelted Fatalities		Under 21 (15-20) with a BAC ²		Total Fatalities
	Count	Percent ³	Count	Percent ³	Count	Percent ³	
Bernalillo	-	0.0%	3	13.0%	-	0.0%	23
Catron	-	-	-	-	-	-	-
Chaves	-	0.0%	1	50.0%	-	0.0%	2
Cibola	-	0.0%	1	50.0%	-	0.0%	2
Colfax	-	-	-	-	-	-	-
Curry	-	0.0%	1	100.0%	-	0.0%	1
De Baca	-	-	-	-	-	-	-
Doña Ana	-	0.0%	4	80.0%	-	0.0%	5
Eddy	1	33.3%	-	0.0%	-	0.0%	3
Grant	-	0.0%	-	0.0%	-	0.0%	3
Guadalupe	-	0.0%	1	50.0%	-	0.0%	2
Harding	-	-	-	-	-	-	-
Hidalgo	-	-	-	-	-	-	-
Lea	-	0.0%	1	16.7%	-	0.0%	6
Lincoln	-	0.0%	-	0.0%	-	0.0%	2
Los Alamos	-	-	-	-	-	-	-
Luna	-	0.0%	1	20.0%	-	0.0%	5
McKinley	2	22.2%	5	55.6%	-	0.0%	9
Mora	-	-	-	-	-	-	-
Otero	1	100.0%	-	0.0%	-	0.0%	1
Quay	-	0.0%	-	0.0%	-	0.0%	1
Rio Arriba	-	0.0%	1	100.0%	-	0.0%	1
Roosevelt	-	0.0%	2	100.0%	-	0.0%	2
San Juan	2	66.7%	1	33.3%	-	0.0%	3
San Miguel	-	0.0%	2	100.0%	-	0.0%	2
Sandoval	1	50.0%	1	50.0%	-	0.0%	2
Santa Fe	2	40.0%	-	0.0%	-	0.0%	5
Sierra	-	0.0%	1	50.0%	-	0.0%	2
Socorro	-	0.0%	-	0.0%	-	0.0%	1
Taos	1	50.0%	-	0.0%	-	0.0%	2
Torrance	-	-	-	-	-	-	-
Union	-	0.0%	1	100.0%	-	0.0%	1
Valencia	-	0.0%	-	0.0%	-	0.0%	2
Total	10	11.4%	27	30.7%	-	0.0%	88

¹ All fatalities in alcohol-involved crashes.

² Fatalities under 21 with a reported BAC (Blood Alcohol Content) above zero.

³ Percentage based on total fatalities in the county.

Fatalities by County and Vehicle Type, 2025 to Date										
County	Cars	Pickup Trucks	Semi Trucks, Buses	Vans, SUVs, Utility Vehicles	ATV (4W)	Motorcyclists	Pedestrians	Pedalcyclists	RVs	Total Fatalities
Bernalillo	2	-	-	1	-	10	7	3	-	23
Catron	-	-	-	-	-	-	-	-	-	-
Chaves	2	-	-	-	-	-	-	-	-	2
Cibola	1	-	-	1	-	-	-	-	-	2
Colfax	-	-	-	-	-	-	-	-	-	-
Curry	-	1	-	-	-	-	-	-	-	1
De Baca	-	-	-	-	-	-	-	-	-	-
Doña Ana	1	-	-	3	-	-	-	1	-	5
Eddy	-	-	-	-	1	1	1	-	-	3
Grant	-	-	2	-	-	-	1	-	-	3
Guadalupe	1	-	-	1	-	-	-	-	-	2
Harding	-	-	-	-	-	-	-	-	-	-
Hidalgo	-	-	-	-	-	-	-	-	-	-
Lea	2	-	1	3	-	-	-	-	-	6
Lincoln	1	-	-	-	1	-	-	-	-	2
Los Alamos	-	-	-	-	-	-	-	-	-	-
Luna	-	2	1	1	-	-	1	-	-	5
McKinley	3	4	-	1	-	-	1	-	-	9
Mora	-	-	-	-	-	-	-	-	-	-
Otero	1	-	-	-	-	-	-	-	-	1
Quay	-	-	-	1	-	-	-	-	-	1
Rio Arriba	1	-	-	-	-	-	-	-	-	1
Roosevelt	2	-	-	-	-	-	-	-	-	2
San Juan	-	2	-	-	-	1	-	-	-	3
San Miguel	-	-	-	2	-	-	-	-	-	2
Sandoval	2	-	-	-	-	-	-	-	-	2
Santa Fe	-	1	-	1	-	-	3	-	-	5
Sierra	-	1	-	1	-	-	-	-	-	2
Socorro	1	-	-	-	-	-	-	-	-	1
Taos	1	-	-	-	-	-	1	-	-	2
Torrance	-	-	-	-	-	-	-	-	-	-
Union	1	-	-	-	-	-	-	-	-	1
Valencia	-	-	-	-	-	2	-	-	-	2
Total	22	11	4	16	2	14	15	4	-	88

Motorcycle ¹ Fatalities by County and Month, 2025 to Date														
County	Jan.	Feb.	Mar.	Apr.	May	Jun.	Jul.	Aug.	Sep.	Oct.	Nov.	Dec.	2025 Total, to Date	2024 Total, to Date
Bernalillo	2	3	5	-	-	-	-	-	-	-	-	-	10	6
Catron	-	-	-	-	-	-	-	-	-	-	-	-	-	-
Chaves	-	-	-	-	-	-	-	-	-	-	-	-	-	-
Cibola	-	-	-	-	-	-	-	-	-	-	-	-	-	-
Colfax	-	-	-	-	-	-	-	-	-	-	-	-	-	-
Curry	-	-	-	-	-	-	-	-	-	-	-	-	-	-
De Baca	-	-	-	-	-	-	-	-	-	-	-	-	-	-
Doña Ana	-	-	-	-	-	-	-	-	-	-	-	-	-	-
Eddy	-	-	1	-	-	-	-	-	-	-	-	-	1	1
Grant	-	-	-	-	-	-	-	-	-	-	-	-	-	1
Guadalupe	-	-	-	-	-	-	-	-	-	-	-	-	-	-
Harding	-	-	-	-	-	-	-	-	-	-	-	-	-	-
Hidalgo	-	-	-	-	-	-	-	-	-	-	-	-	-	-
Lea	-	-	-	-	-	-	-	-	-	-	-	-	-	1
Lincoln	-	-	-	-	-	-	-	-	-	-	-	-	-	-
Los Alamos	-	-	-	-	-	-	-	-	-	-	-	-	-	-
Luna	-	-	-	-	-	-	-	-	-	-	-	-	-	-
McKinley	-	-	-	-	-	-	-	-	-	-	-	-	-	-
Mora	-	-	-	-	-	-	-	-	-	-	-	-	-	-
Otero	-	-	-	-	-	-	-	-	-	-	-	-	-	-
Quay	-	-	-	-	-	-	-	-	-	-	-	-	-	-
Rio Arriba	-	-	-	-	-	-	-	-	-	-	-	-	-	-
Roosevelt	-	-	-	-	-	-	-	-	-	-	-	-	-	-
San Juan	-	-	1	-	-	-	-	-	-	-	-	-	1	-
San Miguel	-	-	-	-	-	-	-	-	-	-	-	-	-	-
Sandoval	-	-	-	-	-	-	-	-	-	-	-	-	-	1
Santa Fe	-	-	-	-	-	-	-	-	-	-	-	-	-	-
Sierra	-	-	-	-	-	-	-	-	-	-	-	-	-	-
Socorro	-	-	-	-	-	-	-	-	-	-	-	-	-	-
Taos	-	-	-	-	-	-	-	-	-	-	-	-	-	-
Torrance	-	-	-	-	-	-	-	-	-	-	-	-	-	-
Union	-	-	-	-	-	-	-	-	-	-	-	-	-	-
Valencia	-	-	2	-	-	-	-	-	-	-	-	-	2	-
Total	2	3	9	-	-	-	-	-	-	-	-	-	14	10

¹ The term motorcycle includes motorized scooters and mopeds, but excludes 4W/ATVs.

Motorcycle ¹ Fatalities by County Relating to Alcohol, Helmet Use, and Age, 2025 to Date							
County	Alcohol-involved Fatalities ²		Unhelmeted Fatalities		Fatalities Under Age 30 (Ages 15-29)		Total Fatalities
	Count	Percent ³	Count	Percent ³	Count	Percent ³	
Bernalillo	-	0.0%	7	70.0%	-	0.0%	10
Catron	-	-	-	-	-	-	-
Chaves	-	-	-	-	-	-	-
Cibola	-	-	-	-	-	-	-
Colfax	-	-	-	-	-	-	-
Curry	-	-	-	-	-	-	-
De Baca	-	-	-	-	-	-	-
Doña Ana	-	-	-	-	-	-	-
Eddy	-	0.0%	-	0.0%	-	0.0%	1
Grant	-	-	-	-	-	-	-
Guadalupe	-	-	-	-	-	-	-
Harding	-	-	-	-	-	-	-
Hidalgo	-	-	-	-	-	-	-
Lea	-	-	-	-	-	-	-
Lincoln	-	-	-	-	-	-	-
Los Alamos	-	-	-	-	-	-	-
Luna	-	-	-	-	-	-	-
McKinley	-	-	-	-	-	-	-
Mora	-	-	-	-	-	-	-
Otero	-	-	-	-	-	-	-
Quay	-	-	-	-	-	-	-
Rio Arriba	-	-	-	-	-	-	-
Roosevelt	-	-	-	-	-	-	-
San Juan	-	0.0%	1	100.0%	-	0.0%	1
San Miguel	-	-	-	-	-	-	-
Sandoval	-	-	-	-	-	-	-
Santa Fe	-	-	-	-	-	-	-
Sierra	-	-	-	-	-	-	-
Socorro	-	-	-	-	-	-	-
Taos	-	-	-	-	-	-	-
Torrance	-	-	-	-	-	-	-
Union	-	-	-	-	-	-	-
Valencia	-	0.0%	2	100.0%	-	0.0%	2
Total	-	0.0%	10	0.0%	-	0.0%	14

¹ The term motorcycle includes motorized scooters and mopeds, but excludes 4W/ATVs.

² All motorcycle fatalities in alcohol-involved crashes.

³ Percentage based on total motorcycle fatalities in the county.

Fatalities by Maintenance District and Month, 2025 to Date													
District	Jan.	Feb.	Mar.	Apr.	May	Jun.	Jul.	Aug.	Sep.	Oct.	Nov.	Dec.	Total
District 1	7	5	4	-	-	-	-	-	-	-	-	-	16
District 2	8	5	4	-	-	-	-	-	-	-	-	-	17
District 3	5	10	12	-	-	-	-	-	-	-	-	-	27
District 4	3	2	1	-	-	-	-	-	-	-	-	-	6
District 5	3	4	4	-	-	-	-	-	-	-	-	-	11
District 6	3	5	3	-	-	-	-	-	-	-	-	-	11
Total	29	31	28	-	-	-	-	-	-	-	-	-	88

Fatalities by Maintenance District Relating to Alcohol, Belt Use, and Under 21 BAC, 2025 to Date							
District	Alcohol-involved Fatalities ¹		Unbelted Fatalities		Under 21 (15-20) Fatalities with a BAC ²		Total Fatalities
	Count	Percent ³	Count	Percent ³	Count	Percent ³	
District 1	-	0.0%	6	37.5%	-	0.0%	16
District 2	2	11.8%	5	29.4%	-	0.0%	17
District 3	1	3.7%	4	14.8%	-	0.0%	27
District 4	-	0.0%	4	66.7%	-	0.0%	6
District 5	5	45.5%	2	18.2%	-	0.0%	11
District 6	2	18.2%	6	54.5%	-	0.0%	11
Total	10	11.4%	27	30.7%	-	0.0%	88

¹ All fatalities in alcohol-involved crashes.

² Fatalities under 21 with a reported BAC (Blood Alcohol Content) above zero.

³ Percentage based on total fatalities in the district