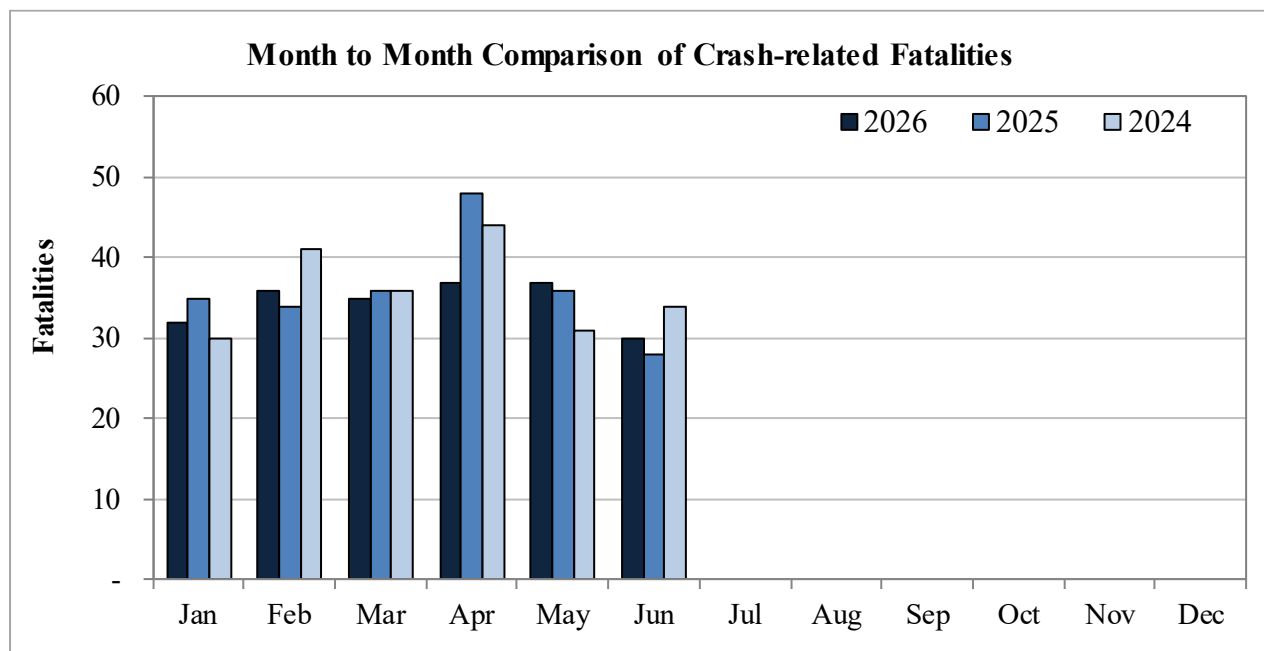


New Mexico Monthly Traffic Fatality Report, 2026

Produced for the New Mexico Department of Transportation, Traffic Safety Division, Traffic Records Bureau,
Under Contract No. 6380 by UNM Geospatial and Population Studies, Traffic Research Unit (TRU)

Fatalities by Month 2026, 2025, 2024 Year to Date			
Month	2026	2025	2024
January	32	35	30
February	36	34	41
March	35	36	36
April	37	48	44
May	37	36	31
June	30	28	34
July	-	-	-
August	-	-	-
September	-	-	-
October	-	-	-
November	-	-	-
December	-	-	-
Total	207	217	216



Fatalities by Vehicle Type, 2026 to Date										
Month in 2026	Cars	Pickup Trucks	Semi Trucks, Buses	Vans, SUVs, Utility Vehicles	ATV (4W)	Motorcyclists	Pedestrians	Pedalcyclists	RVs	Total Fatalities
January	8	6	1	9	-	1	6	1	-	32
February	6	7	2	8	-	5	8	-	-	36
March	9	3	2	11	-	5	5	-	-	35
April	5	8	-	3	1	8	10	2	-	37
May	6	4	1	3	2	12	7	2	-	37
June	10	2	1	3	-	9	2	3	-	30
July	-	-	-	-	-	-	-	-	-	-
August	-	-	-	-	-	-	-	-	-	-
September	-	-	-	-	-	-	-	-	-	-
October	-	-	-	-	-	-	-	-	-	-
November	-	-	-	-	-	-	-	-	-	-
December	-	-	-	-	-	-	-	-	-	-
Total	44	30	7	37	3	40	38	8	-	207

Fatalities by Alcohol Involvement ¹ , 2026 to Date				
Month in 2026	Alcohol-involved ¹	Not Alcohol-involved	Alcohol Unknown	Total Fatalities
January	10	22	-	32
February	11	25	-	36
March	12	23	-	35
April	10	27	-	37
May	8	29	-	37
June	6	24	-	30
July	-	-	-	-
August	-	-	-	-
September	-	-	-	-
October	-	-	-	-
November	-	-	-	-
December	-	-	-	-
Total	57	150	-	207

Alcohol-involved Fatalities ¹ , 2026 to Date			
Month	2026	2025	2024
January	10	10	12
February	11	16	15
March	12	15	13
April	10	15	14
May	8	17	13
June	6	7	18
July	-	-	-
August	-	-	-
September	-	-	-
October	-	-	-
November	-	-	-
December	-	-	-
Total	57	80	85

¹ All fatalities in alcohol-involved crashes.

¹ All fatalities in alcohol-involved crashes.

Fatalities Under 21, 2026 to Date	
Age	Fatalities
1	1
2	-
3	-
4	1
5	-
6	-
7	-
8	-
9	-
10	-
11	-
12	-
13	-
14	-
15	4
16	1
17	2
18	5
19	5
20	7
Total	26

Month in 2026	Total Fatalities, 2026 to Date	Alcohol-involved Fatalities ¹ , 2026 to Date			
		Motorcyclist Fatalities	Percent Motorcyclist Fatalities	Pedestrian Fatalities	Percent Pedestrian Fatalities
January	32	-	0.0%	2	6.3%
February	36	1	2.8%	2	5.6%
March	35	-	0.0%	1	2.9%
April	37	1	2.7%	5	13.5%
May	37	4	10.8%	-	0.0%
June	30	1	3.3%	-	0.0%
July	-	-	-	-	-
August	-	-	-	-	-
September	-	-	-	-	-
October	-	-	-	-	-
November	-	-	-	-	-
December	-	-	-	-	-
Total	207	7	3.4%	10	4.8%

¹ All fatalities in alcohol-involved crashes.

Alcohol-involved Fatalities ¹ , 2026 to Date		
Alcohol-involved	57	28%
Not Alcohol-involved	150	72%
Alcohol Unknown	-	-
Total	207	100%

¹ All fatalities in alcohol-involved crashes.

Motorcyclist Helmet Usage ¹ , 2026 to Date	
Helmet Usage	Fatalities
Yes	25
No	15
Unknown	-
Total	40

¹ Excludes 4W/ATV.

Fatalities by Vehicle ¹ Occupant Seat Belt Usage, 2026 to Date				
Restraint	Yes	No	Unknown	Total
Seat Belt	50	59	2	111

¹ Total vehicle occupant fatalities. Excludes motorcyclist, 4W/ATV, semi truck, pedestrian and pedalcyclist fatalities.

Senior (65+) Fatalities, 2026 to Date	
Year	Fatalities
2026	41
2025	39
2024	39

Fatalities by Residency and Location, 2026 to Date				
Location	New Mexico Resident	Non-Resident	Unknown Residency	Total
Rural	77	42	-	119
Urban	81	5	1	87
Unknown	-	1	-	1
Total	158	48	1	207

Month to Month Comparison of Fatalities by Alcohol Involvement, 2026 to Date												
Month	2026				2025				2024			
	Alcohol-involved ¹			Total	Alcohol-involved ¹			Total	Alcohol-involved ¹			Total
	Yes	No	Unk		Yes	No	Unk		Yes	No	Unk	
January	10	22	-	32	10	25	-	35	12	18	-	30
February	11	25	-	36	16	18	-	34	15	26	-	41
March	12	23	-	35	15	21	-	36	13	23	-	36
April	10	27	-	37	15	33	-	48	14	30	-	44
May	8	29	-	37	17	19	-	36	13	18	-	31
June	6	24	-	30	7	21	-	28	18	16	-	34
July	-	-	-	-	-	-	-	-	-	-	-	-
August	-	-	-	-	-	-	-	-	-	-	-	-
September	-	-	-	-	-	-	-	-	-	-	-	-
October	-	-	-	-	-	-	-	-	-	-	-	-
November	-	-	-	-	-	-	-	-	-	-	-	-
December	-	-	-	-	-	-	-	-	-	-	-	-
Total	57	150	-	207	80	137	-	217	85	131	-	216

¹ Identifies whether the fatality resulted from an alcohol-involved crash.

Month to Month Comparison of Fatalities by Seat Belt Usage, 2026 to Date												
Month	2026 Fatalities				2025 Fatalities				2024 Fatalities			
	Seat Belt ¹			Total ²	Seat Belt ¹			Total ²	Seat Belt ¹			Total ²
	Yes	No	Unk		Yes	No	Unk		Yes	No	Unk	
January	10	13	-	23	15	10	-	25	7	9	-	16
February	11	10	-	21	3	14	-	17	7	18	-	25
March	9	14	-	23	5	13	-	18	5	12	-	17
April	8	8	-	16	13	15	-	28	9	16	-	25
May	5	7	1	13	7	15	-	22	-	11	-	11
June	7	7	1	15	10	6	-	16	8	16	-	24
July	-	-	-	-	-	-	-	-	-	-	-	-
August	-	-	-	-	-	-	-	-	-	-	-	-
September	-	-	-	-	-	-	-	-	-	-	-	-
October	-	-	-	-	-	-	-	-	-	-	-	-
November	-	-	-	-	-	-	-	-	-	-	-	-
December	-	-	-	-	-	-	-	-	-	-	-	-
Total	50	59	2	111	53	73	-	126	36	82	-	118

¹ Identifies whether a vehicle occupant was belted (Yes), unbelted (No), or belt usage was not reported (Unk).

² Total vehicle occupant fatalities. Excludes motorcyclist, 4W/ATV, semi truck, pedestrian and pedalcyclist fatalities.

Fatalities by County and Month, 2026 To Date														
County	Jan.	Feb.	Mar.	Apr.	May	Jun.	Jul.	Aug.	Sep.	Oct.	Nov.	Dec.	2026 Total, to Date	2025 Total, to Date
Bernalillo	4	5	8	8	9	8	-	-	-	-	-	-	42	47
Catron	-	1	1	1	-	-	-	-	-	-	-	-	3	-
Chaves	-	4	2	5	1	1	-	-	-	-	-	-	13	4
Cibola	3	1	1	-	1	-	-	-	-	-	-	-	6	6
Colfax	-	-	-	-	-	-	-	-	-	-	-	-	-	-
Curry	2	1	2	-	-	1	-	-	-	-	-	-	6	1
De Baca	-	-	-	-	-	1	-	-	-	-	-	-	1	1
Doña Ana	1	2	1	4	4	1	-	-	-	-	-	-	13	16
Eddy	1	2	2	1	1	3	-	-	-	-	-	-	10	11
Grant	-	-	-	-	-	-	-	-	-	-	-	-	-	3
Guadalupe	-	1	2	-	1	-	-	-	-	-	-	-	4	6
Harding	-	-	-	-	-	-	-	-	-	-	-	-	-	-
Hidalgo	2	-	-	-	-	-	-	-	-	-	-	-	2	4
Lea	5	4	3	2	1	1	-	-	-	-	-	-	16	16
Lincoln	-	-	1	-	1	-	-	-	-	-	-	-	2	4
Los Alamos	-	-	1	-	-	-	-	-	-	-	-	-	1	-
Luna	1	-	-	1	1	3	-	-	-	-	-	-	6	10
McKinley	-	5	2	1	2	2	-	-	-	-	-	-	12	15
Mora	-	-	-	-	-	-	-	-	-	-	-	-	-	2
Otero	3	-	2	2	2	1	-	-	-	-	-	-	10	2
Quay	-	-	1	-	1	2	-	-	-	-	-	-	4	4
Rio Arriba	2	-	2	-	1	-	-	-	-	-	-	-	5	8
Roosevelt	-	-	1	-	-	-	-	-	-	-	-	-	1	3
San Juan	2	3	1	5	-	2	-	-	-	-	-	-	13	10
San Miguel	-	-	-	-	-	-	-	-	-	-	-	-	-	8
Sandoval	-	1	-	2	2	2	-	-	-	-	-	-	7	8
Santa Fe	2	2	1	3	3	-	-	-	-	-	-	-	11	10
Sierra	-	1	-	-	-	-	-	-	-	-	-	-	1	3
Socorro	1	-	-	1	1	-	-	-	-	-	-	-	3	3
Taos	-	1	-	-	3	1	-	-	-	-	-	-	5	6
Torrance	1	-	1	-	-	-	-	-	-	-	-	-	2	1
Union	-	-	-	-	-	-	-	-	-	-	-	-	-	1
Valencia	2	2	-	1	2	1	-	-	-	-	-	-	8	4
Total	32	36	35	37	37	30	-	-	-	-	-	-	207	217

Fatalities by County Relating to Alcohol, Belt Use, and Under 21 BAC, 2026 to Date							
County	Alcohol-involved Fatalities ¹		Unbelted Fatalities		Under 21 (15-20) with a BAC ²		Total Fatalities
	Count	Percent ³	Count	Percent ³	Count	Percent ³	
Bernalillo	10	23.8%	8	19.0%	2	4.8%	42
Catron	-	0.0%	1	33.3%	-	0.0%	3
Chaves	2	15.4%	4	30.8%	1	7.7%	13
Cibola	-	0.0%	3	50.0%	-	0.0%	6
Colfax	-	-	-	-	-	-	-
Curry	5	83.3%	3	50.0%	2	33.3%	6
De Baca	-	0.0%	-	0.0%	-	0.0%	1
Doña Ana	4	30.8%	6	46.2%	-	0.0%	13
Eddy	2	20.0%	3	30.0%	-	0.0%	10
Grant	-	-	-	-	-	-	-
Guadalupe	-	0.0%	1	25.0%	-	0.0%	4
Harding	-	-	-	-	-	-	-
Hidalgo	-	0.0%	-	0.0%	-	0.0%	2
Lea	5	31.3%	4	25.0%	-	0.0%	16
Lincoln	1	50.0%	1	50.0%	-	0.0%	2
Los Alamos	-	0.0%	-	0.0%	-	0.0%	1
Luna	-	0.0%	2	33.3%	-	0.0%	6
McKinley	6	50.0%	5	41.7%	1	8.3%	12
Mora	-	-	-	-	-	-	-
Otero	1	10.0%	5	50.0%	-	0.0%	10
Quay	-	0.0%	1	25.0%	-	0.0%	4
Rio Arriba	1	20.0%	-	0.0%	-	0.0%	5
Roosevelt	-	0.0%	-	0.0%	-	0.0%	1
San Juan	8	61.5%	-	0.0%	1	7.7%	13
San Miguel	-	-	-	-	-	-	-
Sandoval	1	14.3%	-	0.0%	-	0.0%	7
Santa Fe	7	63.6%	5	45.5%	1	9.1%	11
Sierra	-	0.0%	-	0.0%	-	0.0%	1
Socorro	-	0.0%	2	66.7%	-	0.0%	3
Taos	2	40.0%	-	0.0%	-	0.0%	5
Torrance	1	50.0%	2	100.0%	-	0.0%	2
Union	-	-	-	-	-	-	-
Valencia	1	12.5%	3	37.5%	-	0.0%	8
Total	57	27.5%	59	28.5%	8	3.9%	207

¹ All fatalities in alcohol-involved crashes.

² Fatalities under 21 with a reported BAC (Blood Alcohol Content) above zero.

³ Percentage based on total fatalities in the county.

Fatalities by County and Vehicle Type, 2026 to Date										
County	Cars	Pickup Trucks	Semi Trucks, Buses	Vans, SUVs, Utility Vehicles	ATV (4W)	Motorcyclists	Pedestrians	Pedalcyclists	RVs	Total Fatalities
Bernalillo	5	3	-	6	-	12	13	3	-	42
Catron	-	-	-	2	1	-	-	-	-	3
Chaves	3	4	-	2	-	2	2	-	-	13
Cibola	2	-	-	2	1	1	-	-	-	6
Colfax	-	-	-	-	-	-	-	-	-	-
Curry	4	-	-	1	-	1	-	-	-	6
De Baca	-	-	1	-	-	-	-	-	-	1
Doña Ana	1	5	-	1	-	3	1	2	-	13
Eddy	1	3	1	1	-	2	2	-	-	10
Grant	-	-	-	-	-	-	-	-	-	-
Guadalupe	-	1	-	2	-	1	-	-	-	4
Harding	-	-	-	-	-	-	-	-	-	-
Hidalgo	2	-	-	-	-	-	-	-	-	2
Lea	4	5	1	2	-	1	2	1	-	16
Lincoln	-	1	-	-	-	-	1	-	-	2
Los Alamos	-	-	-	-	-	-	1	-	-	1
Luna	3	1	-	-	-	2	-	-	-	6
McKinley	2	1	1	3	-	1	4	-	-	12
Mora	-	-	-	-	-	-	-	-	-	-
Otero	3	2	-	3	-	1	1	-	-	10
Quay	1	-	1	1	-	1	-	-	-	4
Rio Arriba	1	-	2	-	-	1	1	-	-	5
Roosevelt	-	-	-	-	-	1	-	-	-	1
San Juan	3	-	-	1	-	2	7	-	-	13
San Miguel	-	-	-	-	-	-	-	-	-	-
Sandoval	3	-	-	1	-	3	-	-	-	7
Santa Fe	2	1	-	3	-	2	2	1	-	11
Sierra	-	1	-	-	-	-	-	-	-	1
Socorro	1	-	-	1	-	1	-	-	-	3
Taos	-	-	-	1	1	1	1	1	-	5
Torrance	-	-	-	2	-	-	-	-	-	2
Union	-	-	-	-	-	-	-	-	-	-
Valencia	3	2	-	2	-	1	-	-	-	8
Total	44	30	7	37	3	40	38	8	-	207

Motorcycle ¹ Fatalities by County and Month, 2026 to Date														
County	Jan.	Feb.	Mar.	Apr.	May	Jun.	Jul.	Aug.	Sep.	Oct.	Nov.	Dec.	2026 Total, to Date	2025 Total, to Date
Bernalillo	-	-	2	4	3	3	-	-	-	-	-	-	12	18
Catron	-	-	-	-	-	-	-	-	-	-	-	-	-	-
Chaves	-	-	-	2	-	-	-	-	-	-	-	-	2	-
Cibola	-	1	-	-	-	-	-	-	-	-	-	-	1	-
Colfax	-	-	-	-	-	-	-	-	-	-	-	-	-	-
Curry	-	1	-	-	-	-	-	-	-	-	-	-	1	-
De Baca	-	-	-	-	-	-	-	-	-	-	-	-	-	-
Doña Ana	-	-	-	1	2	-	-	-	-	-	-	-	3	1
Eddy	-	1	-	-	-	1	-	-	-	-	-	-	2	3
Grant	-	-	-	-	-	-	-	-	-	-	-	-	-	-
Guadalupe	-	-	1	-	-	-	-	-	-	-	-	-	1	-
Harding	-	-	-	-	-	-	-	-	-	-	-	-	-	-
Hidalgo	-	-	-	-	-	-	-	-	-	-	-	-	-	-
Lea	-	-	-	-	-	1	-	-	-	-	-	-	1	-
Lincoln	-	-	-	-	-	-	-	-	-	-	-	-	-	-
Los Alamos	-	-	-	-	-	-	-	-	-	-	-	-	-	-
Luna	1	-	-	-	-	1	-	-	-	-	-	-	2	-
McKinley	-	-	-	-	1	-	-	-	-	-	-	-	1	2
Mora	-	-	-	-	-	-	-	-	-	-	-	-	-	-
Otero	-	-	-	-	1	-	-	-	-	-	-	-	1	1
Quay	-	-	-	-	1	-	-	-	-	-	-	-	1	-
Rio Arriba	-	-	1	-	-	-	-	-	-	-	-	-	1	-
Roosevelt	-	-	1	-	-	-	-	-	-	-	-	-	1	-
San Juan	-	-	-	-	-	2	-	-	-	-	-	-	2	1
San Miguel	-	-	-	-	-	-	-	-	-	-	-	-	-	1
Sandoval	-	1	-	-	2	-	-	-	-	-	-	-	3	3
Santa Fe	-	1	-	-	1	-	-	-	-	-	-	-	2	-
Sierra	-	-	-	-	-	-	-	-	-	-	-	-	-	-
Socorro	-	-	-	1	-	-	-	-	-	-	-	-	1	-
Taos	-	-	-	-	1	-	-	-	-	-	-	-	1	2
Torrance	-	-	-	-	-	-	-	-	-	-	-	-	-	-
Union	-	-	-	-	-	-	-	-	-	-	-	-	-	-
Valencia	-	-	-	-	-	1	-	-	-	-	-	-	1	2
Total	1	5	5	8	12	9	-	-	-	-	-	-	40	34

¹ The term motorcycle includes motorized scooters and mopeds, but excludes 4W/ATVs.

Motorcycle ¹ Fatalities by County Relating to Alcohol, Helmet Use, and Age, 2026 to Date							
County	Alcohol-involved Fatalities ²		Unhelmeted Fatalities		Fatalities Under Age 30 (Ages 15-29)		Total Fatalities
	Count	Percent ³	Count	Percent ³	Count	Percent ³	
Bernalillo	3	25.0%	2	16.7%	2	16.7%	12
Catron	-	-	-	-	-	-	-
Chaves	-	0.0%	1	50.0%	-	0.0%	2
Cibola	-	0.0%	1	100.0%	-	0.0%	1
Colfax	-	-	-	-	-	-	-
Curry	-	0.0%	-	0.0%	-	0.0%	1
De Baca	-	-	-	-	-	-	-
Doña Ana	-	0.0%	1	33.3%	-	0.0%	3
Eddy	-	0.0%	-	0.0%	-	0.0%	2
Grant	-	-	-	-	-	-	-
Guadalupe	-	0.0%	1	100.0%	-	0.0%	1
Harding	-	-	-	-	-	-	-
Hidalgo	-	-	-	-	-	-	-
Lea	-	0.0%	-	0.0%	-	0.0%	1
Lincoln	-	-	-	-	-	-	-
Los Alamos	-	-	-	-	-	-	-
Luna	-	0.0%	1	50.0%	-	0.0%	2
McKinley	1	100.0%	-	0.0%	-	0.0%	1
Mora	-	-	-	-	-	-	-
Otero	-	0.0%	-	0.0%	-	0.0%	1
Quay	-	0.0%	1	100.0%	-	0.0%	1
Rio Arriba	-	0.0%	-	0.0%	-	0.0%	1
Roosevelt	-	0.0%	-	0.0%	-	0.0%	1
San Juan	-	0.0%	1	50.0%	-	0.0%	2
San Miguel	-	-	-	-	-	-	-
Sandoval	1	33.3%	3	100.0%	1	33.3%	3
Santa Fe	2	100.0%	1	50.0%	-	0.0%	2
Sierra	-	-	-	-	-	-	-
Socorro	-	0.0%	1	100.0%	-	0.0%	1
Taos	-	0.0%	-	0.0%	-	0.0%	1
Torrance	-	-	-	-	-	-	-
Union	-	-	-	-	-	-	-
Valencia	-	0.0%	1	100.0%	-	0.0%	1
Total	7	0.0%	15	0.0%	3	0.0%	40

¹ The term motorcycle includes motorized scooters and mopeds, but excludes 4W/ATVs.

² All motorcycle fatalities in alcohol-involved crashes.

³ Percentage based on total motorcycle fatalities in the county.

Fatalities by Maintenance District and Month, 2026 to Date													
District	Jan.	Feb.	Mar.	Apr.	May	Jun.	Jul.	Aug.	Sep.	Oct.	Nov.	Dec.	Total
District 1	5	3	1	6	6	4	-	-	-	-	-	-	25
District 2	11	11	13	10	6	8	-	-	-	-	-	-	59
District 3	6	8	8	10	12	11	-	-	-	-	-	-	55
District 4	-	1	3	-	2	2	-	-	-	-	-	-	8
District 5	7	6	6	8	7	3	-	-	-	-	-	-	37
District 6	3	7	4	3	4	2	-	-	-	-	-	-	23
Total	32	36	35	37	37	30	-	-	-	-	-	-	207

Fatalities by Maintenance District Relating to Alcohol, Belt Use, and Under 21 BAC, 2026 to Date							
District	Alcohol-involved Fatalities ¹		Unbelted Fatalities		Under 21 (15-20) Fatalities with a BAC ²		Total Fatalities
	Count	Percent ³	Count	Percent ³	Count	Percent ³	
District 1	4	16.0%	10	40.0%	-	0.0%	25
District 2	16	27.1%	20	33.9%	3	5.1%	59
District 3	12	21.8%	11	20.0%	2	3.6%	55
District 4	-	0.0%	2	25.0%	-	0.0%	8
District 5	19	51.4%	7	18.9%	2	5.4%	37
District 6	6	26.1%	9	39.1%	1	4.3%	23
Total	57	27.5%	59	28.5%	8	3.9%	207

¹ All fatalities in alcohol-involved crashes.

² Fatalities under 21 with a reported BAC (Blood Alcohol Content) above zero.

³ Percentage based on total fatalities in the district