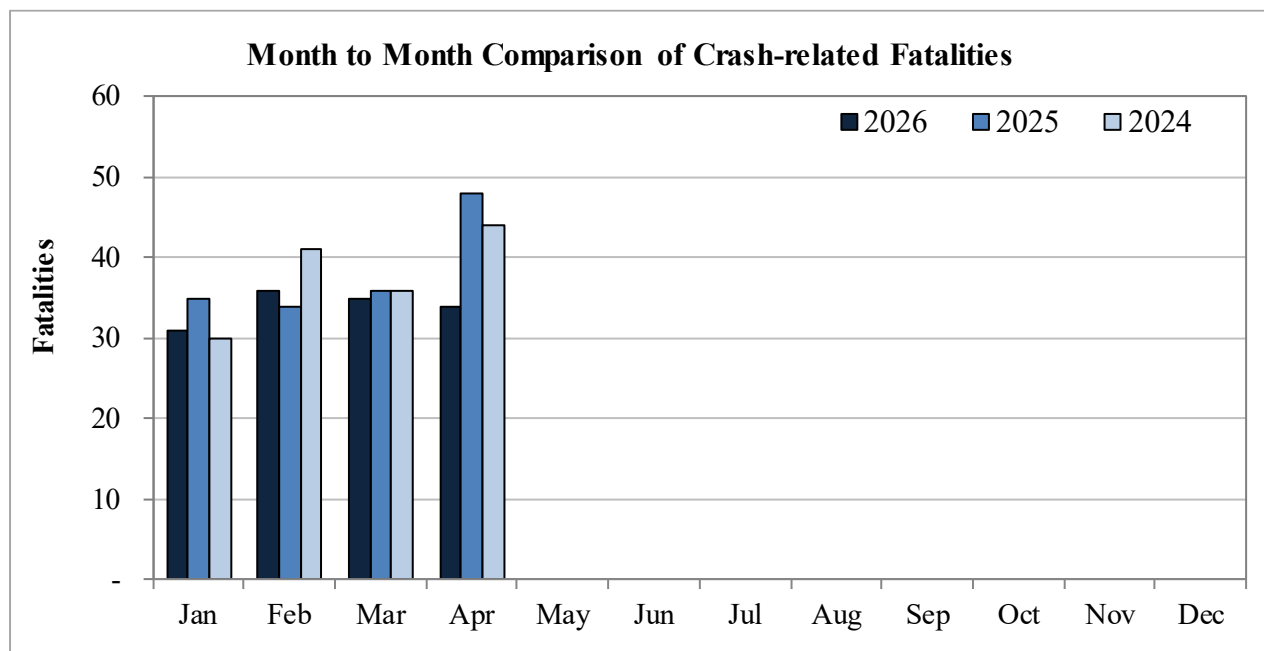


New Mexico Monthly Traffic Fatality Report, 2026

Produced for the New Mexico Department of Transportation, Traffic Safety Division, Traffic Records Bureau,
Under Contract No. 6380 by UNM Geospatial and Population Studies, Traffic Research Unit (TRU)

Fatalities by Month 2026, 2025, 2024 Year to Date			
Month	2026	2025	2024
January	31	35	30
February	36	34	41
March	35	36	36
April	34	48	44
May	-	-	-
June	-	-	-
July	-	-	-
August	-	-	-
September	-	-	-
October	-	-	-
November	-	-	-
December	-	-	-
Total	136	153	151



Fatalities by Vehicle Type, 2026 to Date										
Month in 2026	Cars	Pickup Trucks	Semi Trucks, Buses	Vans, SUVs, Utility Vehicles	ATV (4W)	Motorcyclists	Pedestrians	Pedalcyclists	RVs	Total Fatalities
January	7	7	-	9	-	1	6	1	-	31
February	6	6	3	8	-	5	8	-	-	36
March	10	3	2	10	-	5	5	-	-	35
April	6	7	-	1	1	6	9	2	2	34
May	-	-	-	-	-	-	-	-	-	-
June	-	-	-	-	-	-	-	-	-	-
July	-	-	-	-	-	-	-	-	-	-
August	-	-	-	-	-	-	-	-	-	-
September	-	-	-	-	-	-	-	-	-	-
October	-	-	-	-	-	-	-	-	-	-
November	-	-	-	-	-	-	-	-	-	-
December	-	-	-	-	-	-	-	-	-	-
Total	29	23	5	28	1	17	28	3	2	136

Fatalities by Alcohol Involvement ¹ , 2026 to Date				
Month in 2026	Alcohol-involved ¹	Not Alcohol-involved	Alcohol Unknown	Total Fatalities
January	10	21	-	31
February	11	25	-	36
March	12	23	-	35
April	4	30	-	34
May	-	-	-	-
June	-	-	-	-
July	-	-	-	-
August	-	-	-	-
September	-	-	-	-
October	-	-	-	-
November	-	-	-	-
December	-	-	-	-
Total	37	99	-	136

¹ All fatalities in alcohol-involved crashes.

Alcohol-involved Fatalities ¹ , 2026 to Date			
Month	2026	2025	2024
January	10	10	12
February	11	16	15
March	12	15	13
April	4	15	14
May	-	-	-
June	-	-	-
July	-	-	-
August	-	-	-
September	-	-	-
October	-	-	-
November	-	-	-
December	-	-	-
Total	37	56	54

¹ All fatalities in alcohol-involved crashes.

Fatalities Under 21, 2026 to Date	
Age	Fatalities
1	1
2	-
3	-
4	1
5	-
6	-
7	-
8	-
9	-
10	-
11	-
12	-
13	-
14	-
15	3
16	1
17	1
18	2
19	2
20	6
Total	17

Month in 2026	Total Fatalities, 2026 to Date	Alcohol-involved Fatalities ¹ , 2026 to Date			
		Motorcyclist Fatalities	Percent Motorcyclist Fatalities	Pedestrian Fatalities	Percent Pedestrian Fatalities
January	31	-	0.0%	2	6.5%
February	36	1	2.8%	2	5.6%
March	35	-	0.0%	1	2.9%
April	34	-	0.0%	1	2.9%
May	-	-	-	-	-
June	-	-	-	-	-
July	-	-	-	-	-
August	-	-	-	-	-
September	-	-	-	-	-
October	-	-	-	-	-
November	-	-	-	-	-
December	-	-	-	-	-
Total	136	1	0.7%	6	4.4%

¹ All fatalities in alcohol-involved crashes.

Fatalities by County and Vehicle Type, 2026 to Date										
County	Cars	Pickup Trucks	Semi Trucks/Buses	Non-Semi Trucks/Utility Vehicles	ATV (4W)	Motorcyclists	Pedestrians	Pedalcyclists	RVs	Total Fatalities
Albuquerque	4	3	1	2	1	5	6	-	-	22
Carson	2	4	-	2	-	2	-	-	-	11
Cibola	2	-	-	2	-	1	-	-	-	5
Clayton	-	-	-	1	-	-	-	-	-	1
Corral	2	-	-	1	-	1	-	-	-	5
Del Norte	1	-	-	1	-	1	-	-	-	3
Doña Ana	1	4	-	1	-	1	2	1	-	10
Edley	-	-	1	-	-	-	-	-	1	2
Grant	-	-	-	2	-	1	-	-	-	3
Grantsville	-	-	-	2	-	1	-	-	-	3
Hatch	-	-	-	1	-	-	-	-	-	1
Hidalgo	2	2	-	2	-	-	2	1	-	10
King	-	-	-	-	-	-	-	-	-	0
Lincoln	-	1	-	-	-	-	-	-	-	1
Los Alamos	-	-	-	-	-	-	1	-	-	1
Luna	1	-	-	-	-	1	-	-	-	2
Mohave	-	1	1	2	-	-	4	-	-	8
Mora	1	2	-	3	-	-	-	-	-	6
Osage	-	-	-	-	-	-	-	-	-	0
Quay	-	-	1	-	-	-	1	-	-	2
Rio Arriba	-	-	-	-	-	-	1	-	-	1
Roosevelt	-	-	-	-	-	-	1	-	-	1
Santa Fe	2	-	-	-	-	-	2	-	-	4
Santa Rita	2	1	-	2	-	1	1	-	-	7
Sandoval	-	-	-	-	-	-	1	-	-	1
Santa Rosa	1	1	-	-	-	-	-	-	-	2
Socorro	1	-	-	1	-	-	-	-	-	2
Tanque	-	-	-	-	-	-	-	-	-	0
Torrance	-	-	-	2	-	-	-	-	-	2
Union	-	-	-	-	-	-	-	-	-	0
Valencia	2	2	-	2	-	-	-	-	-	6
Total	29	23	6	28	1	17	28	3	2	136

Motorcyclist Helmet Usage ¹ , 2026 to Date	
Helmet Usage	Fatalities
Yes	14
No	3
Unknown	-
Total	17

Fatalities by Vehicle ¹ Occupant Seat Belt Usage, 2026 to Date				
Restraint	Yes	No	Unknown	Total
Seat Belt	36	44	-	80

¹ Total vehicle occupant fatalities. Excludes motorcyclist, 4W/ATV, semi truck, pedestrian and pedalcyclist fatalities.

¹ Excludes 4W/ATV.

Senior (65+) Fatalities, 2026 to Date	
Year	Fatalities
2026	22
2025	29
2024	27

Fatalities by County and Vehicle Type, 2026 to Date										
County	Cars	Pickup Trucks	Semi Trucks/Buses	Non-Semi Trucks/Utility Vehicles	ATV (4W)	Motorcyclists	Pedestrians	Pedalcyclists	RVs	Total Fatalities
Albuquerque	4	3	1	2	1	5	6	-	-	22
Carson	2	4	-	2	-	2	-	-	-	11
Cibola	2	-	-	2	-	1	-	-	-	5
Clayton	-	-	-	1	-	-	-	-	-	1
Corral	2	-	-	1	-	1	-	-	-	5
Del Norte	1	-	-	1	-	1	-	-	-	3
Doña Ana	1	4	-	1	-	1	2	1	-	10
Edley	1	-	1	-	-	-	-	-	1	2
Grant	-	-	-	2	-	1	-	-	-	3
Grantsville	-	-	-	2	-	1	-	-	-	3
Hatch	-	-	-	1	-	-	-	-	-	1
Hidalgo	2	2	-	2	-	-	2	1	-	10
King	-	-	-	-	-	-	-	-	-	0
Lincoln	-	1	-	-	-	-	-	-	-	1
Los Alamos	-	-	-	-	-	-	1	-	-	1
Luna	1	-	-	-	-	1	-	-	-	2
Mohave	-	1	1	2	-	-	4	-	-	8
Mora	1	2	-	3	-	-	-	-	-	6
Osage	-	-	-	-	-	-	-	-	-	0
Quay	-	-	-	-	-	-	-	-	-	0
Rio Arriba	-	-	-	-	-	-	1	-	-	1
Roosevelt	-	-	-	-	-	-	1	-	-	1
Santa Fe	2	-	-	-	-	-	2	-	-	4
Santa Rita	2	1	-	2	-	1	1	-	-	7
Sandoval	-	-	-	-	-	-	1	-	-	1
Santa Rosa	1	1	-	-	-	-	-	-	-	2
Socorro	1	-	-	1	-	-	-	-	-	2
Tanque	-	-	-	-	-	-	-	-	-	0
Torrance	-	-	-	2	-	-	-	-	-	2
Union	-	-	-	-	-	-	-	-	-	0
Valencia	2	2	-	2	-	-	-	-	-	6
Total	29	23	6	28	1	17	28	3	2	136

Month to Month Comparison of Fatalities by Alcohol Involvement, 2026 to Date												
Month	2026				2025				2024			
	Alcohol-involved ¹			Total	Alcohol-involved ¹			Total	Alcohol-involved ¹			Total
	Yes	No	Unk		Yes	No	Unk		Yes	No	Unk	
January	10	21	-	31	10	25	-	35	12	18	-	30
February	11	25	-	36	16	18	-	34	15	26	-	41
March	12	23	-	35	15	21	-	36	13	23	-	36
April	4	30	-	34	15	33	-	48	14	30	-	44
May	-	-	-	-	-	-	-	-	-	-	-	-
June	-	-	-	-	-	-	-	-	-	-	-	-
July	-	-	-	-	-	-	-	-	-	-	-	-
August	-	-	-	-	-	-	-	-	-	-	-	-
September	-	-	-	-	-	-	-	-	-	-	-	-
October	-	-	-	-	-	-	-	-	-	-	-	-
November	-	-	-	-	-	-	-	-	-	-	-	-
December	-	-	-	-	-	-	-	-	-	-	-	-
Total	37	99	-	136	56	97	-	153	54	97	-	151

¹ Identifies whether the fatality resulted from an alcohol-involved crash.

Month to Month Comparison of Fatalities by Seat Belt Usage, 2026 to Date												
Month	2026 Fatalities				2025 Fatalities				2024 Fatalities			
	Seat Belt ¹			Total ²	Seat Belt ¹			Total ²	Seat Belt ¹			Total ²
	Yes	No	Unk		Yes	No	Unk		Yes	No	Unk	
January	10	13	-	23	15	10	-	25	7	9	-	16
February	10	10	-	20	3	14	-	17	7	18	-	25
March	9	14	-	23	5	13	-	18	5	12	-	17
April	7	7	-	14	13	15	-	28	9	16	-	25
May	-	-	-	-	-	-	-	-	-	-	-	-
June	-	-	-	-	-	-	-	-	-	-	-	-
July	-	-	-	-	-	-	-	-	-	-	-	-
August	-	-	-	-	-	-	-	-	-	-	-	-
September	-	-	-	-	-	-	-	-	-	-	-	-
October	-	-	-	-	-	-	-	-	-	-	-	-
November	-	-	-	-	-	-	-	-	-	-	-	-
December	-	-	-	-	-	-	-	-	-	-	-	-
Total	36	44	-	80	36	52	-	88	28	55	-	83

¹ Identifies whether a vehicle occupant was belted (Yes), unbelted (No), or belt usage was not reported (Unk).

² Total vehicle occupant fatalities. Excludes motorcyclist, 4W/ATV, semi truck, pedestrian and pedalcyclist fatalities.

Fatalities by County and Month, 2026 To Date														
County	Jan.	Feb.	Mar.	Apr.	May	Jun.	Jul.	Aug.	Sep.	Oct.	Nov.	Dec.	2026 Total, to Date	2025 Total, to Date
Bernalillo	4	6	8	7	-	-	-	-	-	-	-	-	25	33
Catron	-	1	1	1	-	-	-	-	-	-	-	-	3	-
Chaves	-	4	2	5	-	-	-	-	-	-	-	-	11	2
Cibola	3	1	1	-	-	-	-	-	-	-	-	-	5	5
Colfax	-	-	-	-	-	-	-	-	-	-	-	-	-	-
Curry	2	1	2	-	-	-	-	-	-	-	-	-	5	1
De Baca	-	-	-	-	-	-	-	-	-	-	-	-	-	1
Doña Ana	1	2	1	4	-	-	-	-	-	-	-	-	8	11
Eddy	1	2	2	1	-	-	-	-	-	-	-	-	6	7
Grant	-	-	-	-	-	-	-	-	-	-	-	-	-	1
Guadalupe	-	1	2	-	-	-	-	-	-	-	-	-	3	3
Harding	-	-	-	-	-	-	-	-	-	-	-	-	-	-
Hidalgo	2	-	-	-	-	-	-	-	-	-	-	-	2	3
Lea	5	3	3	2	-	-	-	-	-	-	-	-	13	14
Lincoln	-	-	1	-	-	-	-	-	-	-	-	-	1	4
Los Alamos	-	-	1	-	-	-	-	-	-	-	-	-	1	-
Luna	1	-	-	1	-	-	-	-	-	-	-	-	2	6
McKinley	-	5	2	1	-	-	-	-	-	-	-	-	8	12
Mora	-	-	-	-	-	-	-	-	-	-	-	-	-	2
Otero	3	-	2	1	-	-	-	-	-	-	-	-	6	1
Quay	-	-	1	-	-	-	-	-	-	-	-	-	1	2
Rio Arriba	1	-	2	-	-	-	-	-	-	-	-	-	3	7
Roosevelt	-	-	1	-	-	-	-	-	-	-	-	-	1	2
San Juan	2	3	1	5	-	-	-	-	-	-	-	-	11	7
San Miguel	-	-	-	-	-	-	-	-	-	-	-	-	-	6
Sandoval	-	1	-	2	-	-	-	-	-	-	-	-	3	4
Santa Fe	2	2	1	3	-	-	-	-	-	-	-	-	8	7
Sierra	-	1	-	-	-	-	-	-	-	-	-	-	1	3
Socorro	1	-	-	-	-	-	-	-	-	-	-	-	1	1
Taos	-	1	-	-	-	-	-	-	-	-	-	-	1	3
Torrance	1	-	1	-	-	-	-	-	-	-	-	-	2	1
Union	-	-	-	-	-	-	-	-	-	-	-	-	-	1
Valencia	2	2	-	1	-	-	-	-	-	-	-	-	5	3
Total	31	36	35	34	-	-	-	-	-	-	-	-	136	153

Fatalities by County Relating to Alcohol, Belt Use, and Under 21 BAC, 2026 to Date							
County	Alcohol-involved Fatalities ¹		Unbelted Fatalities		Under 21 (15-20) with a BAC ²		Total Fatalities
	Count	Percent ³	Count	Percent ³	Count	Percent ³	
Bernalillo	6	24.0%	7	28.0%	1	4.0%	25
Catron	-	0.0%	1	33.3%	-	0.0%	3
Chaves	2	18.2%	4	36.4%	1	9.1%	11
Cibola	-	0.0%	3	60.0%	-	0.0%	5
Colfax	-	-	-	-	-	-	-
Curry	4	80.0%	3	60.0%	1	20.0%	5
De Baca	-	-	-	-	-	-	-
Doña Ana	4	50.0%	5	62.5%	-	0.0%	8
Eddy	1	16.7%	-	0.0%	-	0.0%	6
Grant	-	-	-	-	-	-	-
Guadalupe	-	0.0%	1	33.3%	-	0.0%	3
Harding	-	-	-	-	-	-	-
Hidalgo	-	0.0%	-	0.0%	-	0.0%	2
Lea	4	30.8%	3	23.1%	-	0.0%	13
Lincoln	1	100.0%	1	100.0%	-	0.0%	1
Los Alamos	-	0.0%	-	0.0%	-	0.0%	1
Luna	-	0.0%	-	0.0%	-	0.0%	2
McKinley	3	37.5%	3	37.5%	1	12.5%	8
Mora	-	-	-	-	-	-	-
Otero	-	0.0%	3	50.0%	-	0.0%	6
Quay	-	0.0%	-	0.0%	-	0.0%	1
Rio Arriba	1	33.3%	-	0.0%	-	0.0%	3
Roosevelt	-	0.0%	-	0.0%	-	0.0%	1
San Juan	3	27.3%	-	0.0%	1	9.1%	11
San Miguel	-	-	-	-	-	-	-
Sandoval	-	0.0%	-	0.0%	-	0.0%	3
Santa Fe	6	75.0%	5	62.5%	1	12.5%	8
Sierra	-	0.0%	-	0.0%	-	0.0%	1
Socorro	-	0.0%	1	100.0%	-	0.0%	1
Taos	1	100.0%	-	0.0%	-	0.0%	1
Torrance	1	50.0%	2	100.0%	-	0.0%	2
Union	-	-	-	-	-	-	-
Valencia	-	0.0%	2	40.0%	-	0.0%	5
Total	37	27.2%	44	32.4%	6	4.4%	136

¹ All fatalities in alcohol-involved crashes.

² Fatalities under 21 with a reported BAC (Blood Alcohol Content) above zero.

³ Percentage based on total fatalities in the county.

Fatalities by County and Vehicle Type, 2026 to Date										
County	Cars	Pickup Trucks	Semi Trucks, Buses	Vans, SUVs, Utility Vehicles	ATV (4W)	Motorcyclists	Pedestrians	Pedalcyclists	RVs	Total Fatalities
Bernalillo	4	3	1	4	-	5	8	-	-	25
Catron	-	-	-	2	1	-	-	-	-	3
Chaves	2	4	-	1	-	2	2	-	-	11
Cibola	2	-	-	2	-	1	-	-	-	5
Colfax	-	-	-	-	-	-	-	-	-	-
Curry	3	-	-	1	-	1	-	-	-	5
De Baca	-	-	-	-	-	-	-	-	-	-
Doña Ana	1	4	-	1	-	1	-	1	-	8
Eddy	1	-	1	-	-	1	2	-	1	6
Grant	-	-	-	-	-	-	-	-	-	-
Guadalupe	-	-	-	2	-	1	-	-	-	3
Harding	-	-	-	-	-	-	-	-	-	-
Hidalgo	2	-	-	-	-	-	-	-	-	2
Lea	3	5	-	2	-	-	2	1	-	13
Lincoln	-	1	-	-	-	-	-	-	-	1
Los Alamos	-	-	-	-	-	-	1	-	-	1
Luna	1	-	-	-	-	1	-	-	-	2
McKinley	-	1	1	2	-	-	4	-	-	8
Mora	-	-	-	-	-	-	-	-	-	-
Otero	1	2	-	3	-	-	-	-	-	6
Quay	-	-	1	-	-	-	-	-	-	1
Rio Arriba	-	-	1	-	-	1	1	-	-	3
Roosevelt	-	-	-	-	-	1	-	-	-	1
San Juan	2	-	-	1	-	-	7	-	1	11
San Miguel	-	-	-	-	-	-	-	-	-	-
Sandoval	2	-	-	-	-	1	-	-	-	3
Santa Fe	2	1	-	2	-	1	1	1	-	8
Sierra	-	1	-	-	-	-	-	-	-	1
Socorro	1	-	-	-	-	-	-	-	-	1
Taos	-	-	-	1	-	-	-	-	-	1
Torrance	-	-	-	2	-	-	-	-	-	2
Union	-	-	-	-	-	-	-	-	-	-
Valencia	2	1	-	2	-	-	-	-	-	5
Total	29	23	5	28	1	17	28	3	2	136

Motorcycle ¹ Fatalities by County and Month, 2026 to Date														
County	Jan.	Feb.	Mar.	Apr.	May	Jun.	Jul.	Aug.	Sep.	Oct.	Nov.	Dec.	2026 Total, to Date	2025 Total, to Date
Bernalillo	-	-	2	3	-	-	-	-	-	-	-	-	5	13
Catron	-	-	-	-	-	-	-	-	-	-	-	-	-	-
Chaves	-	-	-	2	-	-	-	-	-	-	-	-	2	-
Cibola	-	1	-	-	-	-	-	-	-	-	-	-	1	-
Colfax	-	-	-	-	-	-	-	-	-	-	-	-	-	-
Curry	-	1	-	-	-	-	-	-	-	-	-	-	1	-
De Baca	-	-	-	-	-	-	-	-	-	-	-	-	-	-
Doña Ana	-	-	-	1	-	-	-	-	-	-	-	-	1	1
Eddy	-	1	-	-	-	-	-	-	-	-	-	-	1	2
Grant	-	-	-	-	-	-	-	-	-	-	-	-	-	-
Guadalupe	-	-	1	-	-	-	-	-	-	-	-	-	1	-
Harding	-	-	-	-	-	-	-	-	-	-	-	-	-	-
Hidalgo	-	-	-	-	-	-	-	-	-	-	-	-	-	-
Lea	-	-	-	-	-	-	-	-	-	-	-	-	-	-
Lincoln	-	-	-	-	-	-	-	-	-	-	-	-	-	-
Los Alamos	-	-	-	-	-	-	-	-	-	-	-	-	-	-
Luna	1	-	-	-	-	-	-	-	-	-	-	-	1	-
McKinley	-	-	-	-	-	-	-	-	-	-	-	-	-	-
Mora	-	-	-	-	-	-	-	-	-	-	-	-	-	-
Otero	-	-	-	-	-	-	-	-	-	-	-	-	-	-
Quay	-	-	-	-	-	-	-	-	-	-	-	-	-	-
Rio Arriba	-	-	1	-	-	-	-	-	-	-	-	-	1	-
Roosevelt	-	-	1	-	-	-	-	-	-	-	-	-	1	-
San Juan	-	-	-	-	-	-	-	-	-	-	-	-	-	1
San Miguel	-	-	-	-	-	-	-	-	-	-	-	-	-	1
Sandoval	-	1	-	-	-	-	-	-	-	-	-	-	1	1
Santa Fe	-	1	-	-	-	-	-	-	-	-	-	-	1	-
Sierra	-	-	-	-	-	-	-	-	-	-	-	-	-	-
Socorro	-	-	-	-	-	-	-	-	-	-	-	-	-	-
Taos	-	-	-	-	-	-	-	-	-	-	-	-	-	-
Torrance	-	-	-	-	-	-	-	-	-	-	-	-	-	-
Union	-	-	-	-	-	-	-	-	-	-	-	-	-	-
Valencia	-	-	-	-	-	-	-	-	-	-	-	-	-	2
Total	1	5	5	6	-	-	-	-	-	-	-	-	17	21

¹ The term motorcycle includes motorized scooters and mopeds, but excludes 4W/ATVs.

Motorcycle ¹ Fatalities by County Relating to Alcohol, Helmet Use, and Age, 2026 to Date							
County	Alcohol-involved Fatalities ²		Unhelmeted Fatalities		Fatalities Under Age 30 (Ages 15-29)		Total Fatalities
	Count	Percent ³	Count	Percent ³	Count	Percent ³	
Bernalillo	-	0.0%	-	0.0%	-	0.0%	5
Catron	-	-	-	-	-	-	-
Chaves	-	0.0%	-	0.0%	-	0.0%	2
Cibola	-	0.0%	-	0.0%	-	0.0%	1
Colfax	-	-	-	-	-	-	-
Curry	-	0.0%	-	0.0%	-	0.0%	1
De Baca	-	-	-	-	-	-	-
Doña Ana	-	0.0%	-	0.0%	-	0.0%	1
Eddy	-	0.0%	-	0.0%	-	0.0%	1
Grant	-	-	-	-	-	-	-
Guadalupe	-	0.0%	1	100.0%	-	0.0%	1
Harding	-	-	-	-	-	-	-
Hidalgo	-	-	-	-	-	-	-
Lea	-	-	-	-	-	-	-
Lincoln	-	-	-	-	-	-	-
Los Alamos	-	-	-	-	-	-	-
Luna	-	0.0%	-	0.0%	-	0.0%	1
McKinley	-	-	-	-	-	-	-
Mora	-	-	-	-	-	-	-
Otero	-	-	-	-	-	-	-
Quay	-	-	-	-	-	-	-
Rio Arriba	-	0.0%	-	0.0%	-	0.0%	1
Roosevelt	-	0.0%	-	0.0%	-	0.0%	1
San Juan	-	-	-	-	-	-	-
San Miguel	-	-	-	-	-	-	-
Sandoval	-	0.0%	1	100.0%	-	0.0%	1
Santa Fe	1	100.0%	1	100.0%	-	0.0%	1
Sierra	-	-	-	-	-	-	-
Socorro	-	-	-	-	-	-	-
Taos	-	-	-	-	-	-	-
Torrance	-	-	-	-	-	-	-
Union	-	-	-	-	-	-	-
Valencia	-	-	-	-	-	-	-
Total	1	0.0%	3	0.0%	-	0.0%	17

¹ The term motorcycle includes motorized scooters and mopeds, but excludes 4W/ATVs.

² All motorcycle fatalities in alcohol-involved crashes.

³ Percentage based on total motorcycle fatalities in the county.

Fatalities by Maintenance District and Month, 2026 to Date													
District	Jan.	Feb.	Mar.	Apr.	May	Jun.	Jul.	Aug.	Sep.	Oct.	Nov.	Dec.	Total
District 1	5	3	1	5	-	-	-	-	-	-	-	-	14
District 2	11	10	13	9	-	-	-	-	-	-	-	-	43
District 3	6	9	8	9	-	-	-	-	-	-	-	-	32
District 4	-	1	3	-	-	-	-	-	-	-	-	-	4
District 5	6	6	6	8	-	-	-	-	-	-	-	-	26
District 6	3	7	4	3	-	-	-	-	-	-	-	-	17
Total	31	36	35	34	-	-	-	-	-	-	-	-	136

Fatalities by Maintenance District Relating to Alcohol, Belt Use, and Under 21 BAC, 2026 to Date							
District	Alcohol-involved Fatalities ¹		Unbelted Fatalities		Under 21 (15-20) Fatalities with a BAC ²		Total Fatalities
	Count	Percent ³	Count	Percent ³	Count	Percent ³	
District 1	4	28.6%	6	42.9%	-	0.0%	14
District 2	12	27.9%	14	32.6%	2	4.7%	43
District 3	6	18.8%	9	28.1%	1	3.1%	32
District 4	-	0.0%	1	25.0%	-	0.0%	4
District 5	12	46.2%	7	26.9%	2	7.7%	26
District 6	3	17.6%	7	41.2%	1	5.9%	17
Total	37	27.2%	44	32.4%	6	4.4%	136

¹ All fatalities in alcohol-involved crashes.

² Fatalities under 21 with a reported BAC (Blood Alcohol Content) above zero.

³ Percentage based on total fatalities in the district