



Traffic-related Crashes and Deaths

Jessica Bloom, Research Scientist III

Robert Rhatigan, Director

University of New Mexico, Geospatial and Population Studies

August 21, 2023

Presentation to the Transportation Infrastructure Revenue Subcommittee (TIRS)

Data on Traffic-related Crashes and Deaths

NMDOT Crash Database

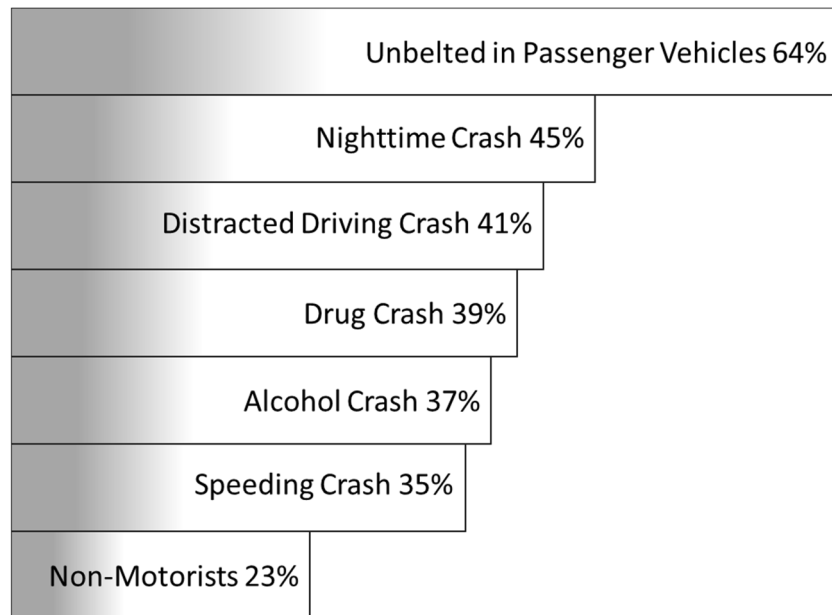
- Crashes reported by law enforcement involving a motor vehicle
- Involves a fatality, injury or >\$500 in damages
- On public roadways (excludes private property, and minor, non-injury crashes)
- Fatal crashes exclude suicide, natural death (e.g. heart attack), and homicide
- Not based on a survey or sampling

UNM Geospatial and Population Studies

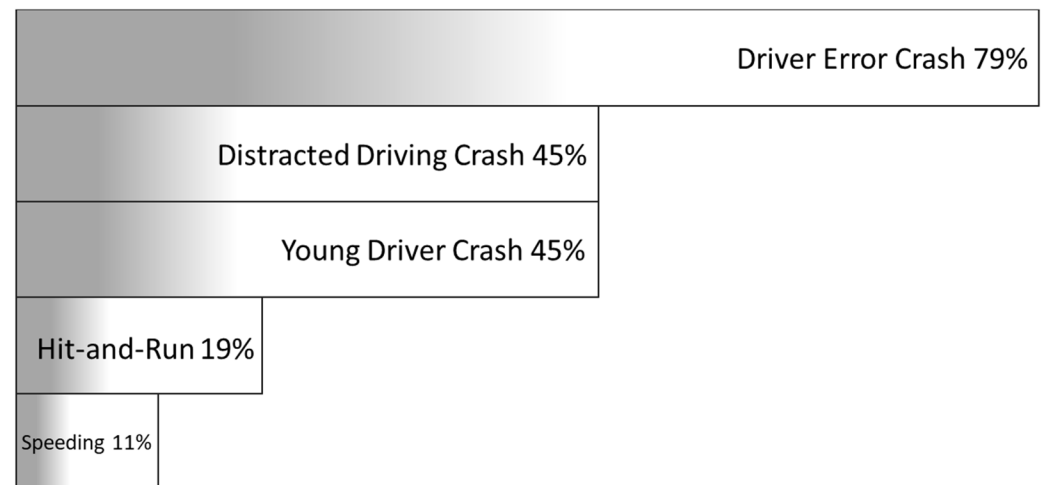
- Maintain NMDOT's statewide crash database (1978 to present)
- Crash data entry and analysis
 - Compile crash reports into a database
 - Improve data quality: Geocode, clean, and standardize
 - Perform crash trend analysis for NMDOT
 - Produce regular and ad-hoc reports, including statistics for each community in NM
- Most requested crash statistics: gps.unm.edu

Common Characteristics of New Mexico Crashes in 2021

Crash-related Deaths

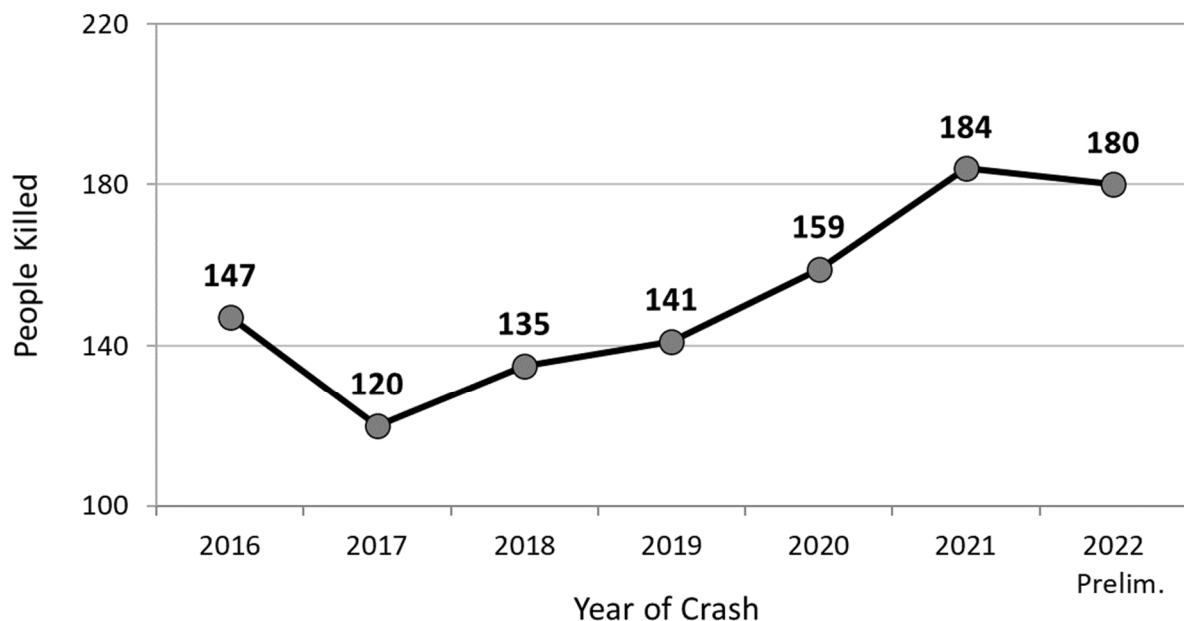


All Crashes



*These are not necessarily behaviors of the person killed.

Unbelted People Killed in Crashes in New Mexico



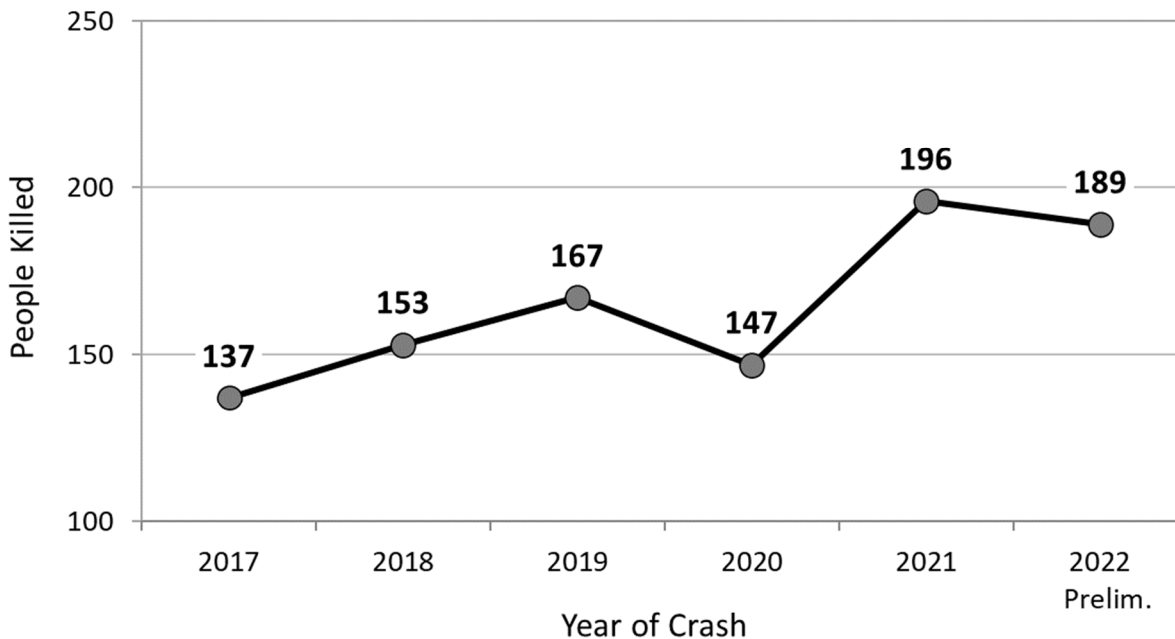
Unbelted

These are the number unbelted people killed in passenger vehicles (passenger cars, vans, SUVs, and pickups) in crashes in New Mexico.

Typically, 70% occur on rural roadways, but urban roadways saw a record-high number of unbelted fatalities in 2020 and 2022.

2006 was the last time NM had more than 180 unbelted fatalities.

People Killed in Distracted-Driving Crashes in New Mexico



Distracted

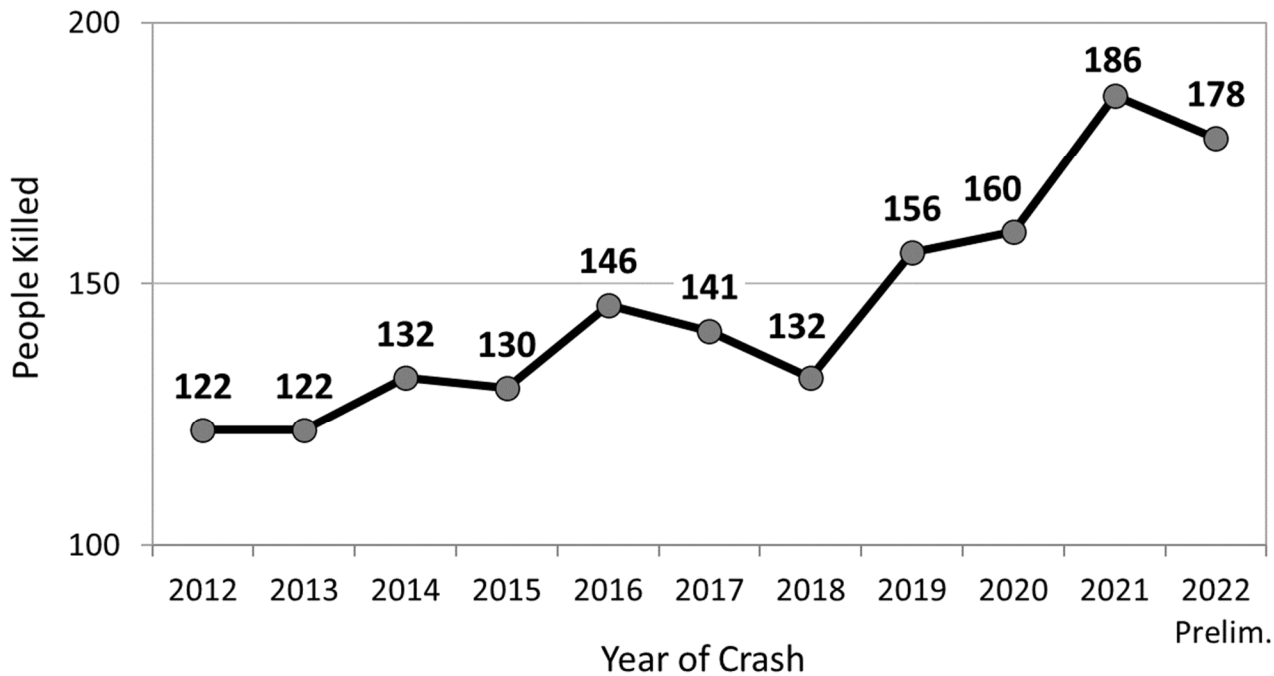
These are the number of people killed in distracted driving crashes in New Mexico. They account for 41% of all people killed in crashes in 2021.

- 48% rural non-Interstate
- 39% urban
- 13% rural Interstate

“Texting” specifically is reported in very few crashes. Instead, many are reported with “driver inattention” as a contributing factor.

Speeding

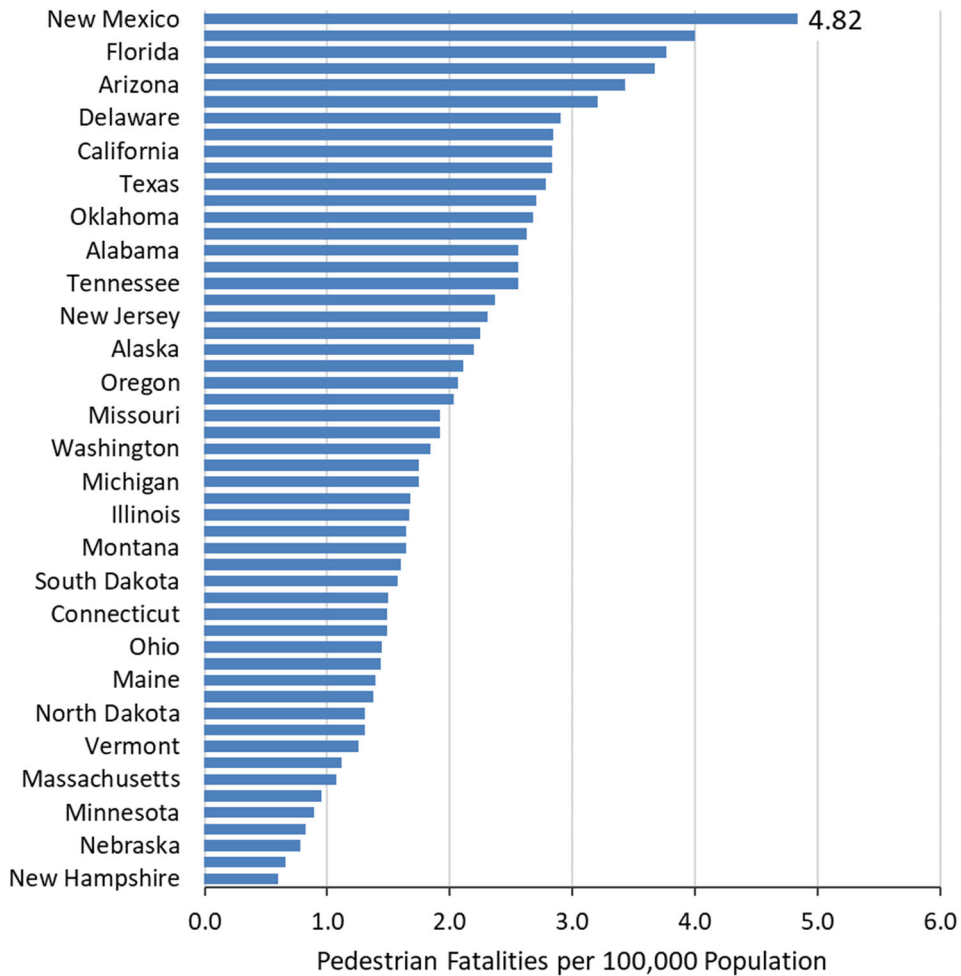
People Killed in Speeding-related Crashes in New Mexico



These are the number people killed in speeding-related crashes in New Mexico.

52% rural roadways
48% urban roadways

2021 State Pedestrian Fatality Rates

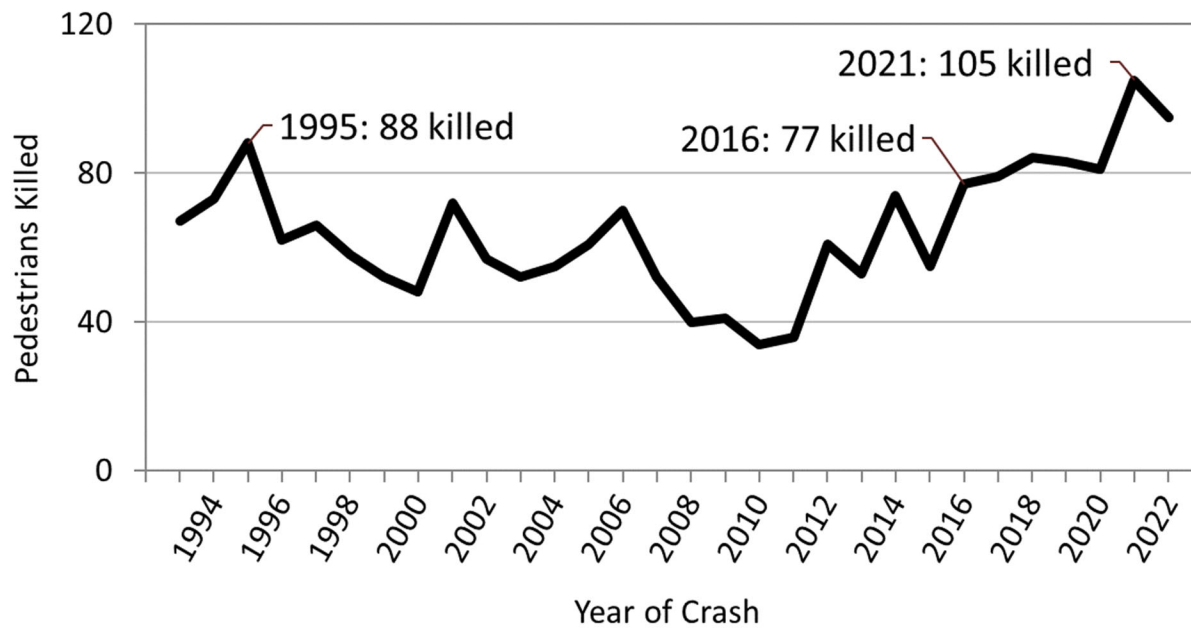


Pedestrian Fatality Rates

New Mexico has the highest pedestrian fatality rate in the country.

Albuquerque has the second highest pedestrian fatality rate compared to other cities with populations above 500,000.

Pedestrians Killed in Crashes in New Mexico



Pedestrians

These are the number pedestrians killed in crashes in New Mexico.

70% on urban roadways

1995 was the last time NM had more than 80 pedestrians killed in crashes.