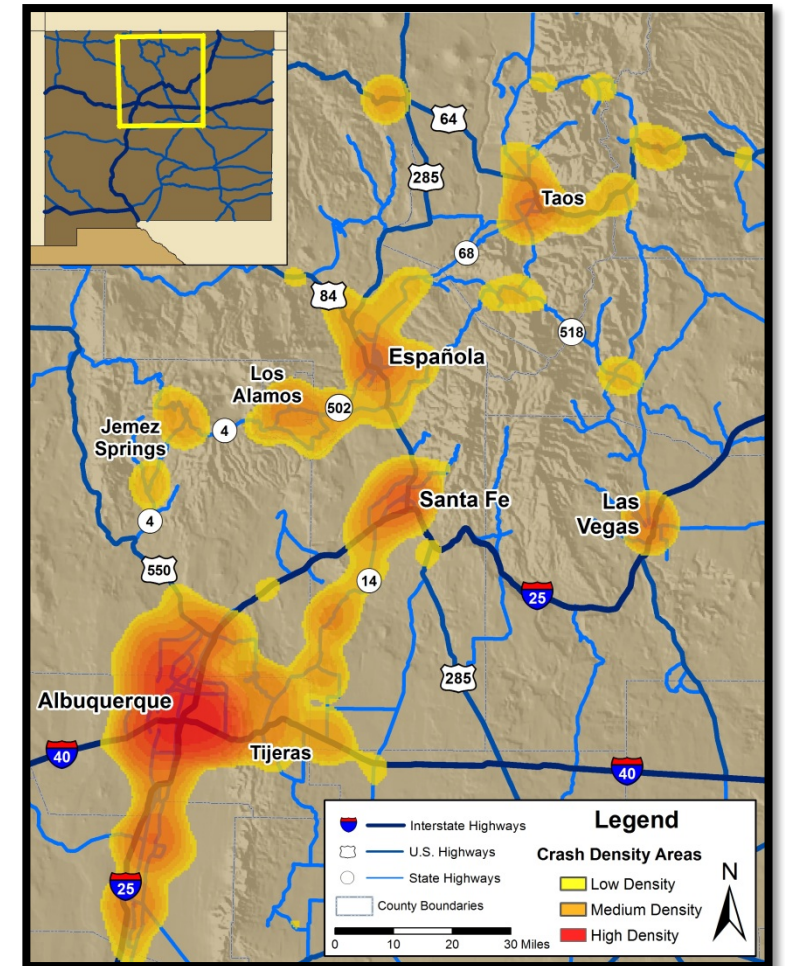
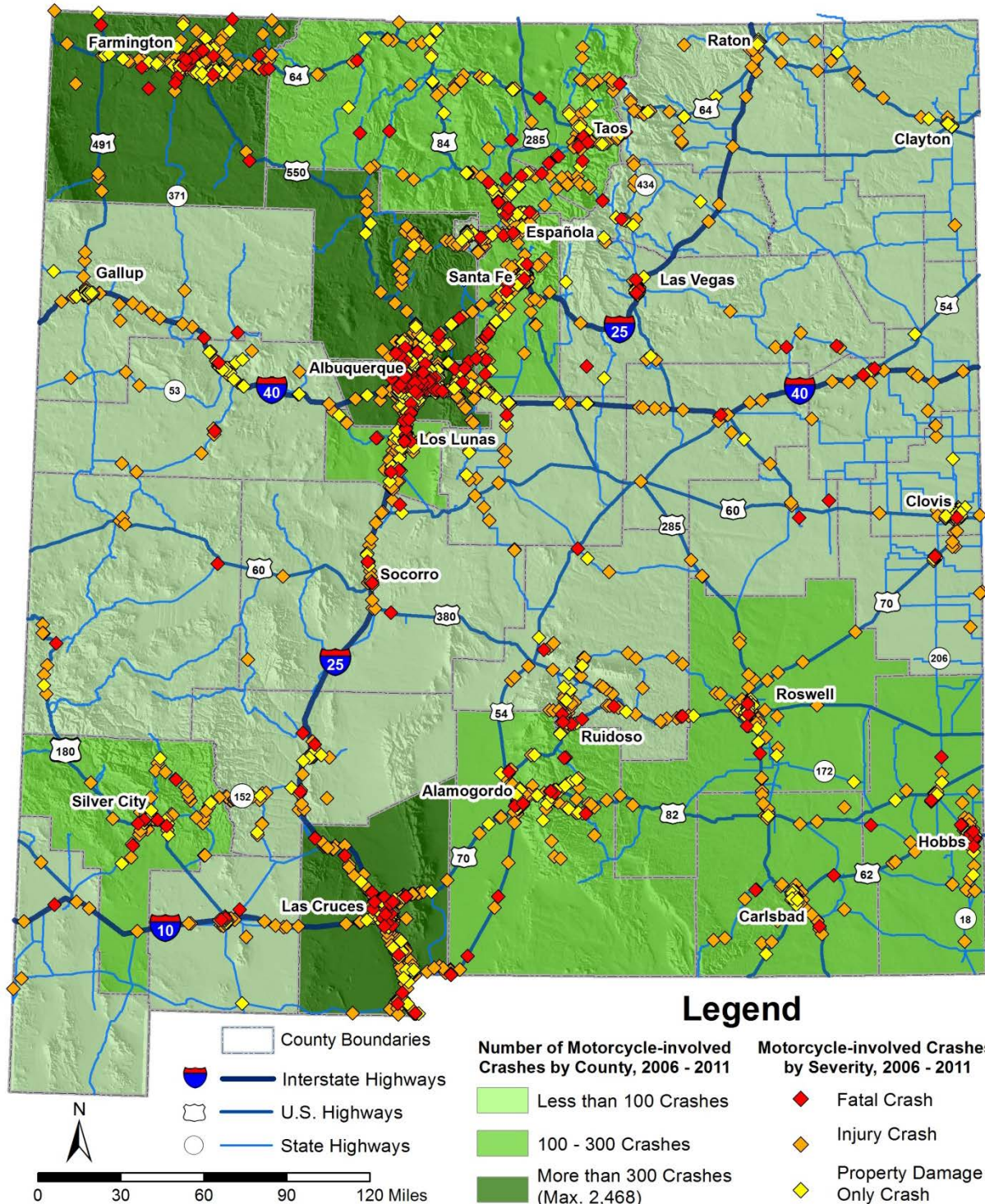


Motorcycle-involved Crashes in New Mexico, 2006 - 2011

From 2006 – 2011 the New Mexico Department of Transportation reported 7,936 motorcycle crashes. Of the total, 284 motorcycle crashes resulted in a fatality and 5,788 motorcycle crashes resulted in some form of an injury. The map on the left shows the locations of motorcycle crashes by the maximum severity of injury sustained in the crash. The green shading indicates motorcycle crash volume by county in New Mexico. The top five counties with the highest number of motorcycle crashes from 2006 – 2011 were Bernalillo (2,468), Doña Ana (621), San Juan (361), Sandoval (331) and Otero (211) County.

Motorcycle-involved Crash Density Map for North Central New Mexico, 2006 – 2011

The map on the right is a region in New Mexico that has one of the highest concentrations of motorcycle crashes. This region contains some of the most populated cities in the state however it also has many rural roadways. Many of these rural, non-interstate, roadways have a high concentration of motorcycle crashes. For example New Mexico State Highways 14, 502, and 4 have a higher density of motorcycle crashes than portions of Interstate 25 or 40.



Source: NMDOT Crash file, 2006 – 2011. The 2011 data are preliminary. Of the 7,936 motorcycle crashes only 5,881 were able to be geocoded. Produced for New Mexico DOT, Traffic Safety Division under contract #CO5579 by UNM, GPS, Traffic Safety Research Unit.