

Alamogordo Community Report, 2001

Demographics

In 2001, there were 25,461 licensed drivers in Alamogordo. Of these, there were 12,798 females and 12,663 males. The population of Alamogordo was 35,582. The total number of crashes in 2001 was 672, yielding a crash rate of 19 per thousand people (Total number of crashes 672 divided by total population 35,582 times 1,000). The corresponding rate for the state was 27 per thousand people.

General Crash Information

Since 1992 the number of crashes has shown no consistent pattern. Fatal and injury crashes have also shown no consistent pattern since 1992. Belt usage (as a percentage) has increased from last year, while belt usage in crashes involving visible and incapacitating injuries has also increased. There were two fatalities in the seven intersections with the most crashes in 2001. Of these intersections, four involve First Street.

Alcohol-related Crash Information

Information about alcohol-involved crashes is included in all sections of this report. Of the 158 people convicted of DWI in Alamogordo, 55 percent were first-time DWI convictions (Number of first convictions 87 divided by the total number of people convicted 158 times 100). The corresponding percent for the state is 57.

Crash Specifics

Crashes involving other vehicles were the most common class, accounting for 77 percent of all crashes. Crashes involving other vehicles and a pedestrian resulted in fatalities. Passenger cars were the vehicle type most often involved in crashes, accounting for 56 percent of all vehicles in crashes. Pickups accounted for 22 percent of vehicles involved in crashes. Together these two vehicle types comprised 77 percent of the vehicles involved in injury crashes. The three most common top contributing factors were failing to yield, following too close, and driver inattention. There were three fatal crashes in 2001. The most common top contributing factor for the fatal crashes was failing to yield.

People in Crashes

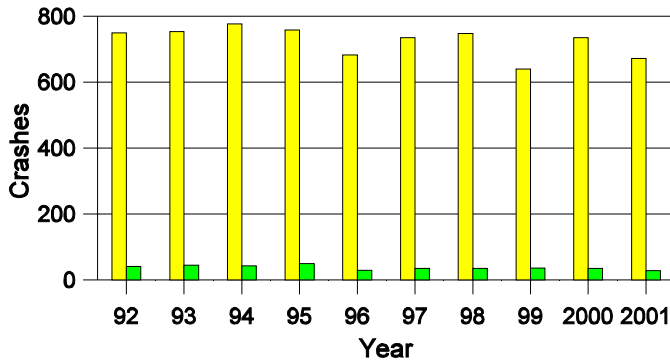
Overall, males were 52 percent of drivers in crashes, although they account for only 50 percent of licensed drivers in Alamogordo. There were fewer pedestrians involved in crashes than last year. In 2001, no 'teenagers' or young adults were killed in crashes in Alamogordo. Statewide 19 percent of alcohol-involved drivers were under 21; in Alamogordo 15 percent were under 21.

Note: The 1999 crash file contains 15% fewer crashes than the 1998 file. This may be due to problems implementing the new system after the old system failed, or to under reporting. Care should be used in interpreting differences between 1999 and other years in this report.

- Location of arrest/conviction was determined by police agency/court location, not driver residence.
- Crashes and drivers were counted by the city of occurrence/residence.
- Population was counted according to the Census definition. The most current city population data is from 2000.
- Young adults are people between the ages of 20 and 24.
- 'Teenagers' are people between the ages of 15 and 19.
- Tables only include variable values for which there are data.

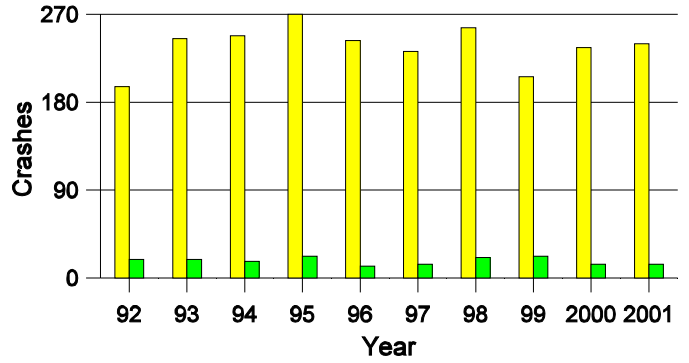
Crashes in Alamogordo

by Alcohol Involvement



Fatal and Injury Crashes in Alamogordo

by Alcohol Involvement



Passenger Vehicle Seatbelt Usage and Injuries in Alamogordo, 1999-2001

Injury Level	2001		2000		1999	
	Total	No Belt	Total	No Belt	Total	No Belt
Killed	1	0	0	0	3	0
Incapacitating injury	36	0	40	3	37	4
Visible injury	44	2	49	2	46	1
Complaint of injury	250	7	202	1	172	5
Unhurt	1,491	25	1,635	31	1,413	25
Total	1,822	34	1,926	37	1,671	35

The Seven Intersections in Alamogordo with the Most Crashes, 2001

Intersection	Crashes			People	
	Total	Fatal	Injury	Killed	Injured
10th St @ White Sands Blvd	14	0	3	0	6
1st St @ Florida Ave	17	1	6	1	10
1st St @ Maryland Ave	17	0	9	0	12
1st St @ New York Ave	16	0	7	0	12
1st St @ White Sands Blvd	23	1	11	1	14
New York Ave @ White Sands Blvd	13	0	5	0	8
US 54 South @ US 70-82 West	28	0	11	0	21

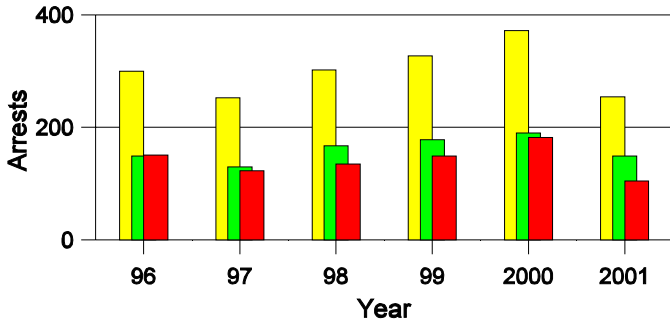
**Lifetime DWI Convictions for Drivers
Convicted of DWI Violations in Alamogordo, 2001**

Convictions	Since 1997	Since 1971
1st	124	87
2nd	31	42
3rd	3	16
4th	0	8
5th	0	3
6th	0	0
7th	0	0
8th	0	1
9th	0	0
10 or more	0	1
Total	158	158

Convictions are counts of people convicted of DWI by 7/2002 for violations in 2001 in Alamogordo.
Convictions are not comparable to arrests.

DWI Arrests in Alamogordo

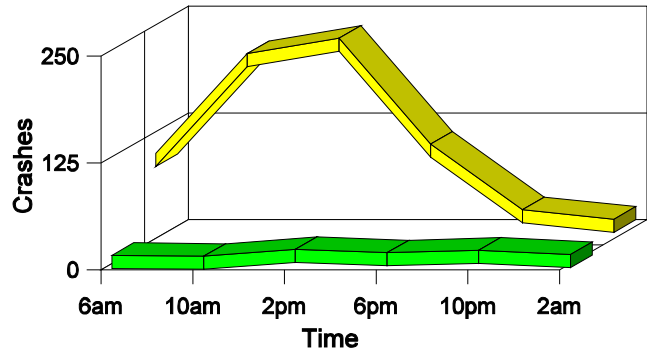
Showing First Arrests and Repeat Offenders



■ Total DWI Arrests
■ First DWI Arrests
■ Repeat DWI Arrests

Crashes in Alamogordo

by Hour and Alcohol Involvement



■ All Crashes
■ Alcohol-involved Crashes

Crashes in Alamogordo by Class, 2001

Class	Crashes				People		
	Total	% of Total	Fatal	% of Fatal	Injury	Killed	Injured
Other vehicle	520	77	2	67	197	2	310
Pedestrian	5	1	1	33	3	1	3
Fixed object	41	6	0	0	12	0	16
Parked vehicle	80	12	0	0	11	0	14
Overturn	7	1	0	0	5	0	7
Other non-collision	7	1	0	0	3	0	4
Pedalcyclist	6	1	0	0	6	0	7
Animal	2	0	0	0	0	0	0
Other object	4	1	0	0	0	0	0
Total	672	100	3	100	237	3	361

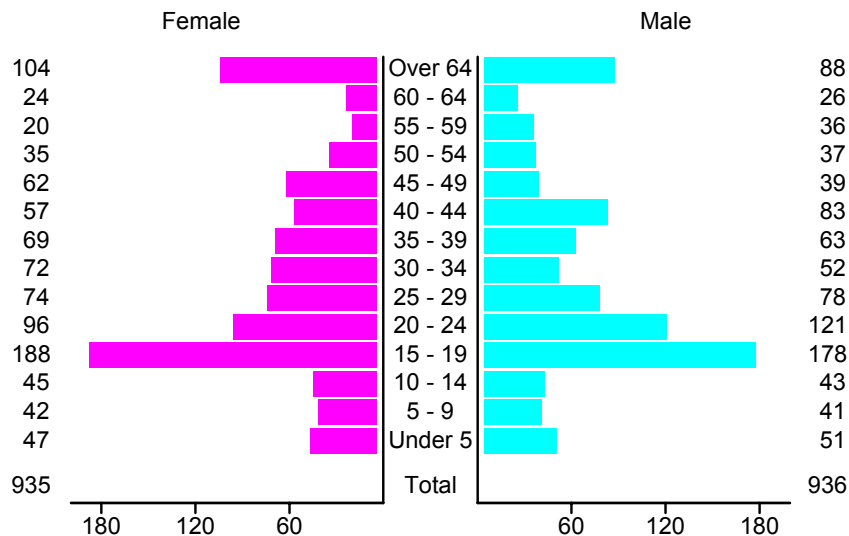
Crashes in Alamogordo by Vehicle Type, 2001

Vehicle Type	Vehicles				People		
	Total	% of Total	Fatal	% of Fatal	Injury	Killed	Injured
Passenger car	749	56	3	43	271	1	231
Pickup	291	22	1	14	104	0	48
Semi	14	1	0	0	0	0	0
Bus	1	0	0	0	0	0	0
Motorcycle	23	2	1	14	18	1	18
Pedalcyclist	6	0	0	0	6	0	5
Pedestrian	5	0	1	14	3	1	3
Van/4 WD	201	15	1	14	80	0	55
Other	6	0	0	0	0	0	0
Unknown	33	2	0	0	2	0	1
Total	1,329	100	7	100	484	3	361

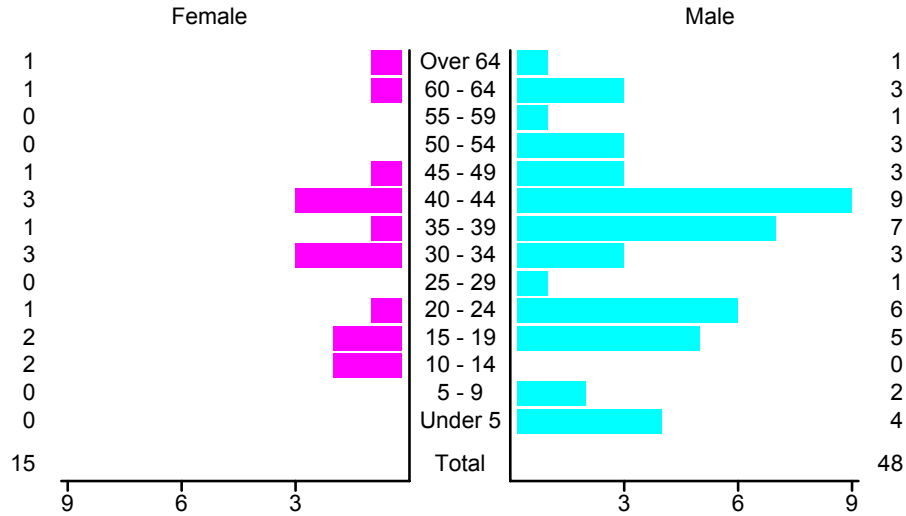
Crashes in Alamogordo by Top Contributing Factor, 2001

Contributing Factor	Crashes				People		
	Total	% of Total	Fatal	% of Fatal	Injury	Killed	Injured
Alcohol involvement	28	4	0	0	14	0	19
Passing a red light	30	4	0	0	17	0	25
Failing to yield	228	34	2	67	93	2	147
Excessive speed	16	2	0	0	7	0	10
Driving left of center	13	2	0	0	3	0	3
Following too close	123	18	0	0	55	0	87
Improper turning	41	6	0	0	10	0	15
Improper overtaking	9	1	0	0	0	0	0
Improper backing	44	7	0	0	5	0	5
Mechanical defect	8	1	0	0	3	0	5
Driver inattention	88	13	0	0	19	0	31
Improper driving	9	1	0	0	4	0	5
Other	35	5	1	33	7	1	9
Total	672	100	3	100	237	3	361

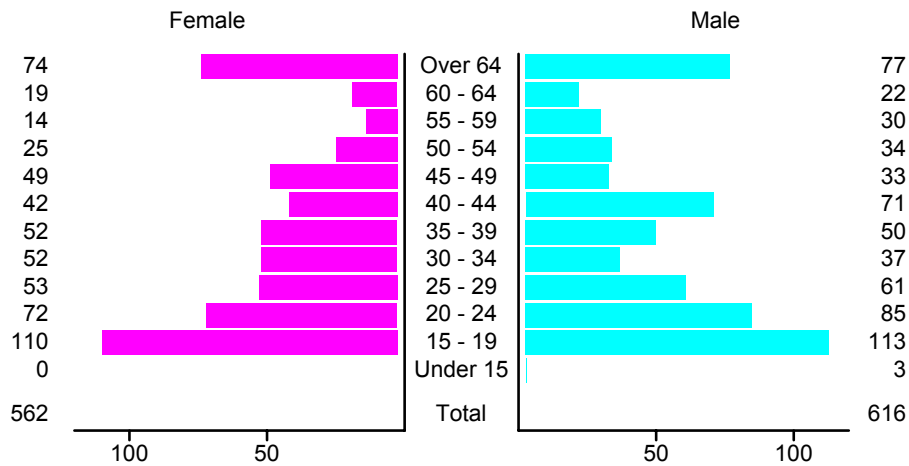
People in Crashes by Age and Sex in Alamogordo, 2001



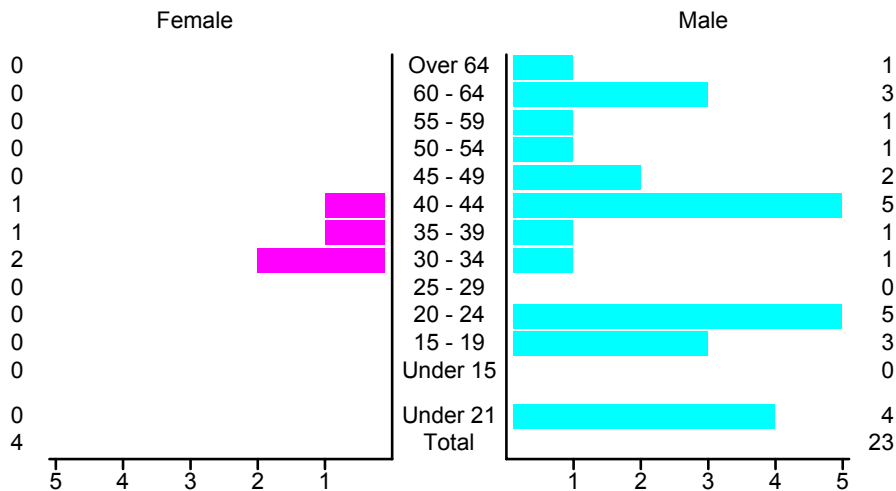
People in Alcohol-Involved Crashes in Alamogordo, 2001 by Age and Sex



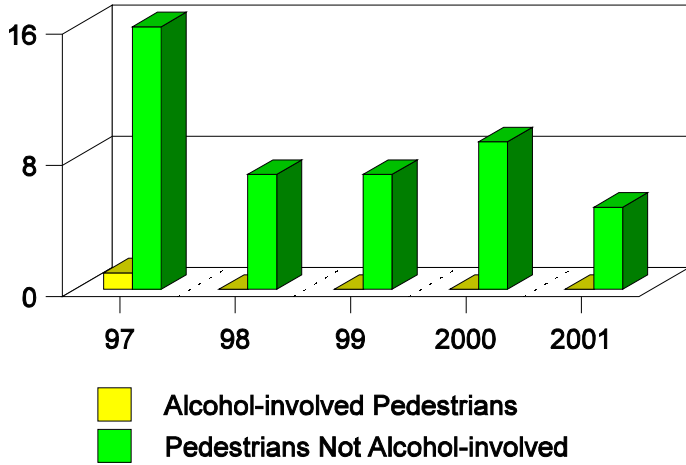
Drivers in Crashes by Age and Sex in Alamogordo, 2001



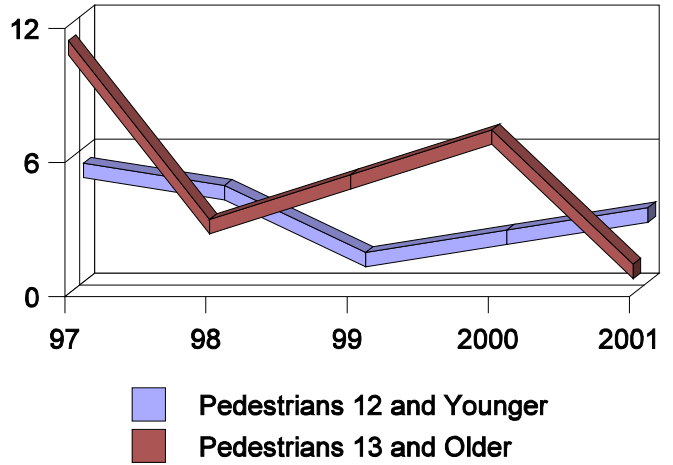
Alcohol-Involved Drivers in Crashes in Alamogordo, 2001 by Age and Sex



**Pedestrian in Crashes in Alamogordo
by Pedestrian Alcohol-involvement, 1997-2001**



**Pedestrian in Crashes in Alamogordo
by Age Group, 1997-2001**



'Teenagers' and Young Adults in Crashes in Alamogordo by Vehicle Type, 2001

Vehicle	'Teenage' Drivers			Young Adult Drivers		
	Total	Fatal	Injury	Total	Fatal	Injury
Passenger car	157	1	60	106	0	48
Pickup	46	0	17	26	0	11
Motorcycle	3	0	2	5	0	3
Pedalcyclist	0	0	0	0	0	0
Van/4 WD	15	0	8	20	1	7
Unknown	2	0	1	1	0	0
Total	223	1	88	158	1	69

'Teenagers' and Young Adults Killed and Injured in Crashes by Year in Alamogordo, 1992-2001

Year	'Teenagers'				Young Adults			
	All Crashes		Alcohol Crashes		All Crashes		Alcohol Crashes	
	Killed	Injured	Killed	Injured	Killed	Injured	Killed	Injured
2001	0	61	0	3	0	47	0	0
2000	0	66	0	5	0	30	0	3
1999	1	50	0	4	0	38	0	7
1998	0	57	0	6	0	43	0	6
1997	0	71	0	6	0	27	0	1
1996	0	68	0	2	0	35	0	2
1995	0	51	0	5	0	57	0	7
1994	0	59	0	6	0	49	0	5
1993	0	56	0	2	1	41	0	2
1992	0	48	0	8	0	42	0	8