

Bernalillo County Report, 2001

Demographics

In 2001, there were 12,773 licensed drivers in Bernalillo County. Of these, there were 6,291 females and 6,482 males. The population in Bernalillo County was 108,071. The total number of crashes in 2001 was 297, yielding a crash rate of three per thousand people (The total number of crashes 297 divided by the population 108,071 multiplied by 1,000). The corresponding rate for the state was 27 per thousand people.

General Crash Information

Since 1992 the number of crashes has shown no consistent pattern. Fatal and injury crashes have also shown no consistent pattern since 1992. Belt usage (as a percentage) has stayed about the same as last year, while belt usage in crashes involving visible and incapacitating injuries has increased.

Alcohol-related Crash Information

Information about alcohol-involved crashes is included in all sections of this report. Of the 356 people convicted of DWI in Bernalillo County in 2001, 56 percent were first-time DWI convictions (Number of first convictions 200 divided by the total number of people convicted 356 multiplied by 100). The corresponding percentage for the state was 57.

Crash Specifics

Crashes involving other vehicles were the most common class, accounting for 36 percent of all crashes. Crashes involving overturns were the most common crash class which resulted in fatalities. Passenger cars were the vehicle type most often involved in crashes, accounting for 39 percent of all vehicles in crashes. Pickups accounted for 22 percent of vehicles involved in crashes. Together these two vehicle types comprised 60 percent of the vehicles involved in injury crashes. The two most common top contributing factors were excessive speed and driver inattention. There were six fatal crashes in 2001. The most common top contributing factor for the fatal crashes was driving left of center.

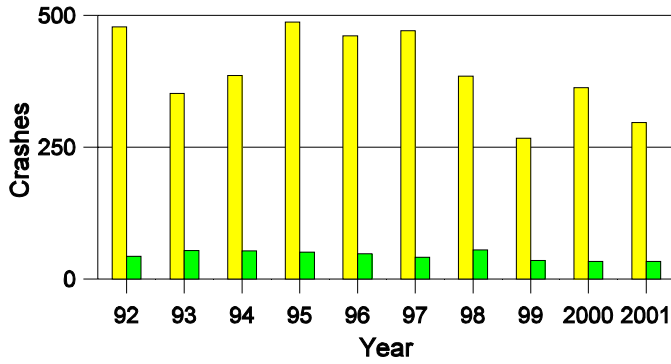
People in Crashes

Overall, males were 67 percent of drivers in crashes, although they account for only 51 percent of licensed drivers in Bernalillo County. There were more pedestrians involved in crashes this year than last year. In 2001, no 'teenagers' and one young adult were killed in crashes in Bernalillo County. Statewide 19 percent of alcohol-involved drivers were under 21; in Bernalillo County 14 percent were under 21.

Note: The 1999 crash file contains 15% fewer crashes than the 1998 file. This may be due to problems implementing the new system after the old system failed, or to under reporting. Care should be used in interpreting differences between 1999 and other years in this report.

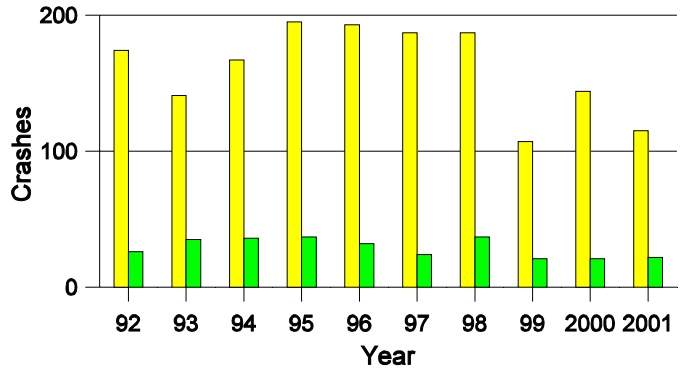
- Crashes in cities with a population greater than 4,000 are not included in this report.
- Location of arrest/conviction was determined by police agency/court location, not driver residence.
- Crashes and drivers were counted by the city of occurrence/residence.
- Population was counted according to the Census definition, using 2000 estimates.
- Young adults are people between the ages of 20 and 24.
- 'Teenagers' are people between the ages of 15 and 19.
- Tables only include variable values for which there are data.

Crashes in Bernalillo County by Alcohol Involvement



■ All Crashes
■ Alcohol-involved Crashes

Fatal and Injury Crashes in Bernalillo County by Alcohol Involvement



■ All Fatal and Injury Crashes
■ Alcohol-involved Fatal and Injury Crashes

Passenger Vehicle Seatbelt Usage and Injuries in Bernalillo County, 1999-2001

Injury Level	2001		2000		1999	
	Total	No Belt	Total	No Belt	Total	No Belt
Killed	4	2	3	2	7	4
Incapacitating injury	28	1	26	8	42	11
Visible injury	52	4	46	5	43	2
Complaint of injury	52	5	87	3	48	3
Unhurt	417	8	512	11	385	8
Total	553	20	674	29	525	28

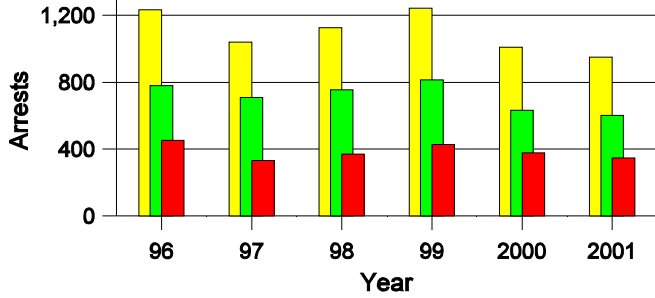
Lifetime DWI Convictions for Drivers Convicted of DWI Violations in Bernalillo County, 2001

Convictions	Since 1997	Since 1971
1st	270	200
2nd	74	84
3rd	10	35
4th	2	24
5th	0	8
6th	0	2
7th	0	1
8th	0	0
9th	0	1
10 or more	0	1
Total	356	356

Convictions are counts of people convicted of DWI by 7/2002 for violations in 2001 in Bernalillo County. Convictions are not comparable to arrests.

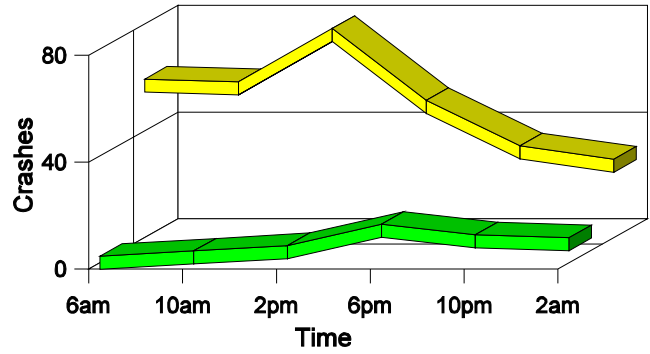
DWI Arrests in Bernalillo County

Showing First Arrests and Repeat Offenders



Crashes in Bernalillo County

by Hour and Alcohol Involvement



Crashes in Bernalillo County by Class, 2001

Class	Crashes					People	
	Total	% of Total	Fatal	% of Fatal	Injury	Killed	Injured
Other vehicle	107	36	0	0	33	0	57
Pedestrian	4	1	0	0	4	0	7
Fixed object	70	24	1	17	21	1	24
Veh. on other roadway	3	1	1	17	0	1	0
Parked vehicle	13	4	0	0	7	0	15
Overturn	62	21	3	50	31	4	47
Other non-collision	23	8	0	0	8	0	8
Animal	10	3	0	0	3	0	4
Other object	5	2	1	17	2	1	6
Total	297	100	6	100	109	7	168

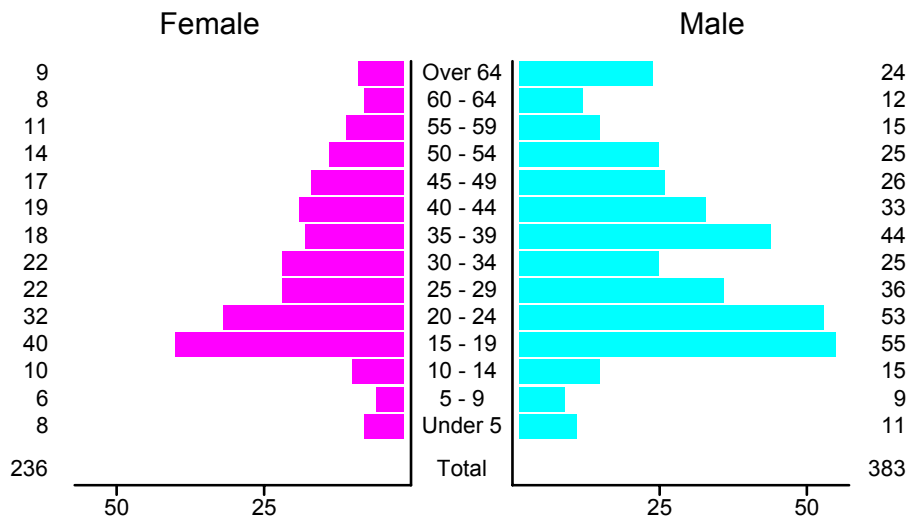
Crashes in Bernalillo County by Vehicle Type, 2001

Vehicle Type	Vehicles					People	
	Total	% of Total	Fatal	% of Fatal	Injury	Killed	Injured
Passenger car	180	39	2	20	69	1	85
Pickup	102	22	1	10	32	1	23
Semi	43	9	1	10	16	0	8
Motorcycle	14	3	1	10	13	1	14
Pedestrian	8	2	3	30	5	1	7
Van/4 WD	89	20	2	20	31	3	30
Other	6	1	0	0	1	0	0
Unknown	14	3	0	0	2	0	1
Total	456	100	10	100	169	7	168

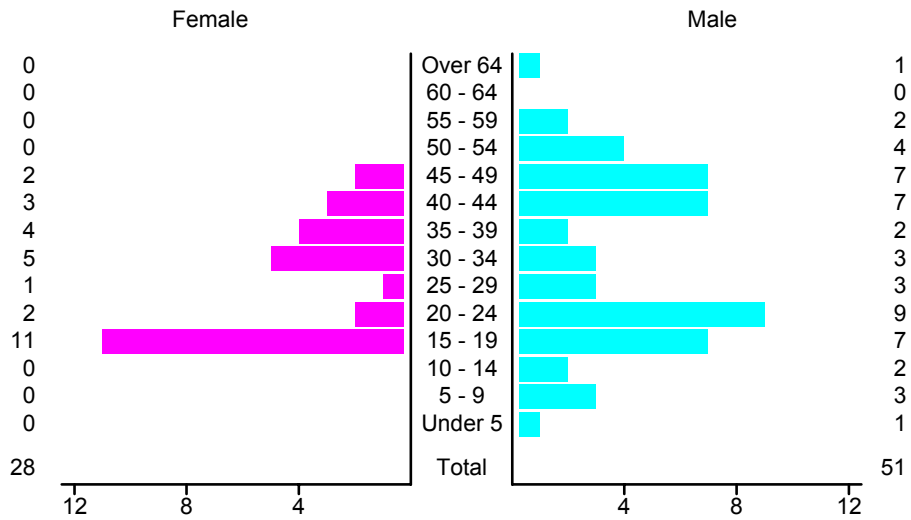
Crashes in Bernalillo County by Top Contributing Factor, 2001

Contributing Factor	Crashes				People		
	Total	% of Total	Fatal	% of Fatal	Injury	Killed	Injured
Alcohol involvement	33	11	1	17	21	1	36
Passing a red light	4	1	0	0	2	0	5
Failing to yield	19	6	0	0	8	0	13
Excessive speed	60	20	0	0	20	0	31
Driving left of center	14	5	2	33	6	2	9
Following too close	19	6	0	0	4	0	9
Improper turning	6	2	0	0	2	0	3
Improper overtaking	6	2	0	0	2	0	2
Improper backing	4	1	0	0	1	0	1
Mechanical defect	16	5	0	0	3	0	5
Driver inattention	40	13	1	17	13	1	15
Improper driving	10	3	1	17	5	2	7
Other	66	22	1	17	22	1	32
Total	297	100	6	100	109	7	168

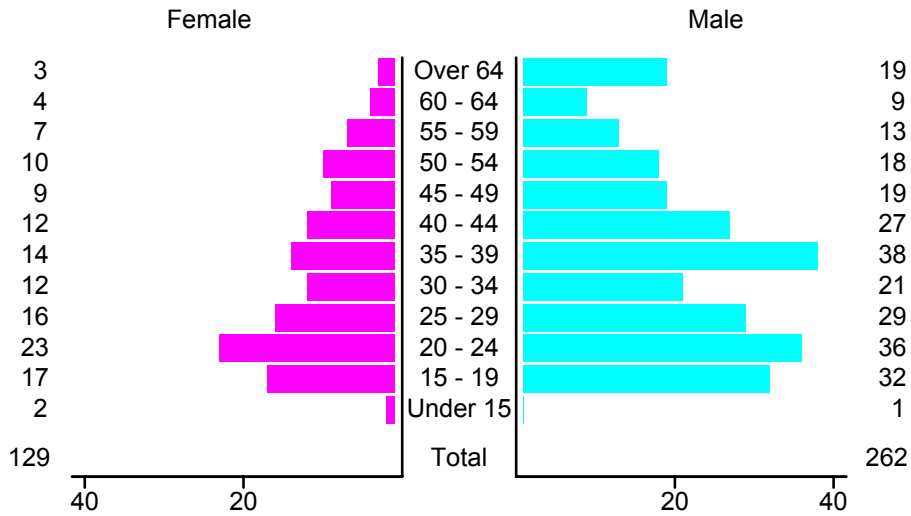
People in Crashes by Age and Sex in Bernalillo County, 2001



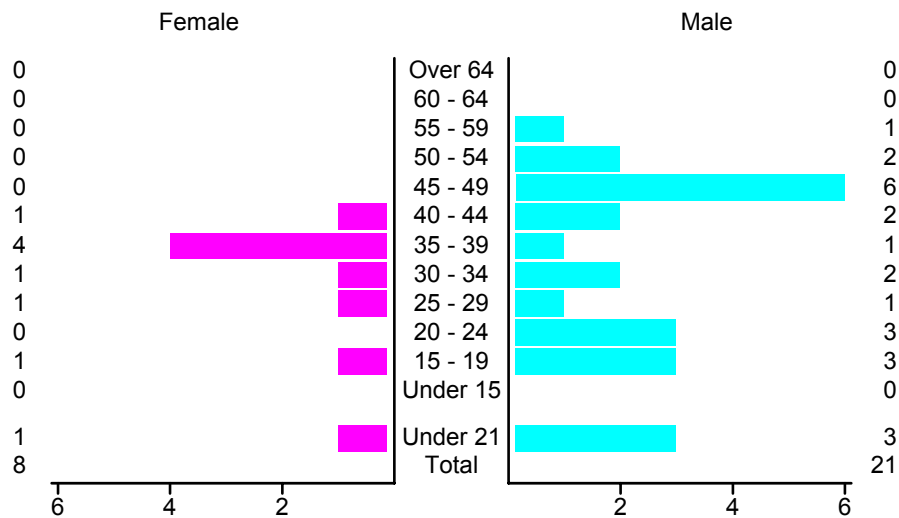
People in Alcohol-Involved Crashes in Bernalillo County, 2001 by Age and Sex



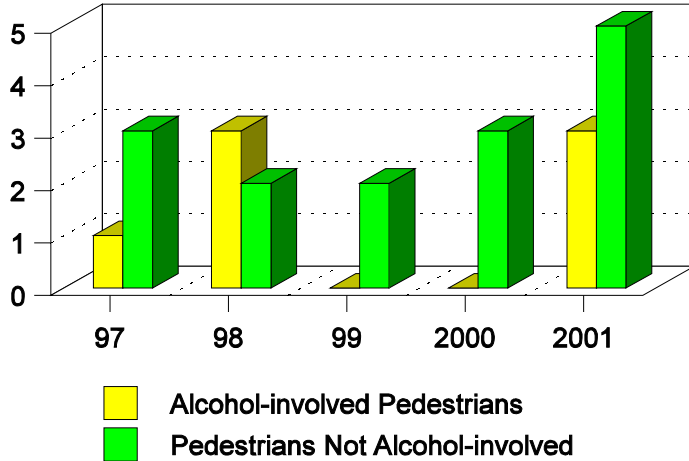
Drivers in Crashes by Age and Sex in Bernalillo County, 2001



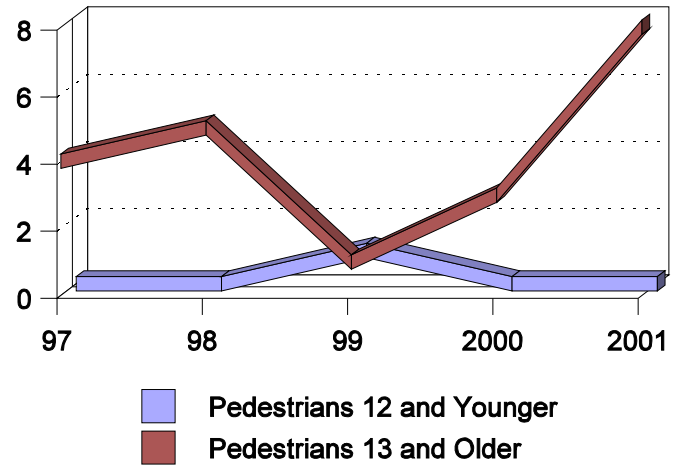
Alcohol-Involved Drivers in Crashes in Bernalillo County, 2001 by Age and Sex



**Pedestrians in Crashes in Bernalillo County
by Pedestrian Alcohol-involvement, 1997-2001**



**Pedestrians in Crashes in Bernalillo County
by Age Group, 1997-2001**



'Teenagers' and Young Adults in Crashes in Bernalillo County by Vehicle Type, 2001

Vehicle	'Teenage' Drivers			Young Adult Drivers		
	Total	Fatal	Injury	Total	Fatal	Injury
Passenger car	37	1	17	33	1	12
Pickup	7	0	0	8	0	0
Semi	0	0	0	3	0	2
Motorcycle	0	0	0	2	0	2
Pedestrian	0	0	0	3	2	1
Van/4 WD	5	0	3	13	0	6
Total	49	1	20	62	3	23

'Teenagers' and Young Adults in Crashes in Bernalillo County, 1992-2001

Year	'Teenagers'				Young Adults			
	All Crashes		Alcohol Crashes		All Crashes		Alcohol Crashes	
	Killed	Injured	Killed	Injured	Killed	Injured	Killed	Injured
2001	0	34	0	11	1	14	1	4
2000	1	36	0	3	0	27	0	4
1999	0	21	0	3	1	20	1	4
1998	4	40	2	4	2	24	0	4
1997	2	38	1	8	4	32	1	2
1996	1	51	0	4	0	35	0	9
1995	3	49	0	8	3	38	0	7
1994	0	40	0	15	2	30	1	7
1993	0	22	0	4	3	27	2	8
1992	1	43	0	6	2	39	2	9