

Española Community Report, 2001

Demographics

In 2001, there were 10,823 licensed drivers in Española. Of these, there were 5,574 females and 5,249 males. The population of Española was 9,688. The total number of crashes in 2001 was 712, yielding a crash rate of 73 per thousand people (Total number of crashes 712 divided by total population 9,688 times 1,000). The corresponding rate for the state was 27 per thousand people.

General Crash Information

Since 1992 the number of crashes has shown no consistent pattern. Fatal and injury crashes have also shown no consistent pattern since 1992. Belt usage (as a percentage) has increased from last year, while belt usage in crashes involving visible and incapacitating injuries has also increased. There were no fatalities in the seven intersections with the most crashes in 2001. Of these intersections, five involve Riverside Drive/ NM 68.

Alcohol-related Crash Information

Information about alcohol-involved crashes is included in all sections of this report. Of the 90 people convicted of DWI in Española, 46 percent were first-time DWI convictions (Number of first convictions 41 divided by the total number of people convicted 90 times 100). The corresponding percent for the state is 57.

Crash Specifics

Crashes involving other vehicles were the most common class, accounting for 89 percent of all crashes. A crash involving a pedestrian resulted in a fatality. Passenger cars were the vehicle type most often involved in crashes, accounting for 60 percent of all vehicles in crashes. Pickups accounted for 24 percent of vehicles involved in crashes. Together these two vehicle types comprised 85 percent of the vehicles involved in injury crashes. The three most common top contributing factors were following too close, failing to yield, and driver inattention. There was one fatal crash in 2001. The top contributing factor for the fatal crash was 'other'.

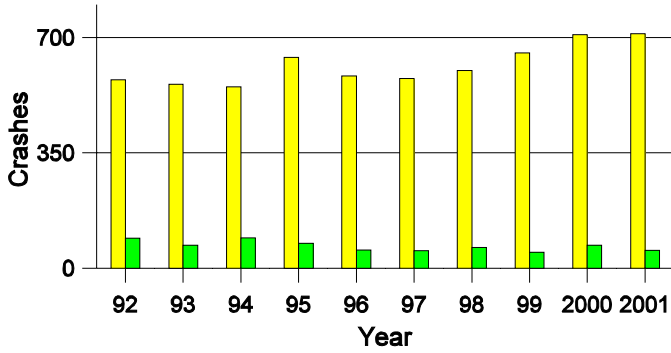
People in Crashes

Overall, males were 54 percent of drivers in crashes, although they account for only 48 percent of licensed drivers in Española. There were two pedestrians in crashes. In 2001, no 'teenagers' or young adults were killed in crashes in Española. Statewide 19 percent of alcohol-involved drivers were under 21; in Española 28 percent were under 21.

Note: The 1999 crash file contains 15% fewer crashes than the 1998 file. This may be due to problems implementing the new system after the old system failed, or to under reporting. Care should be used in interpreting differences between 1999 and other years in this report.

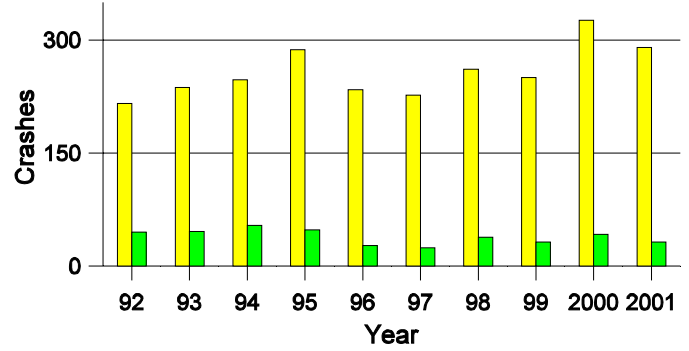
- Location of arrest/conviction was determined by police agency/court location, not driver residence.
- Crashes and drivers were counted by the city of occurrence/residence.
- Population was counted according to the Census definition. The most current city population data is from 2000.
- Young adults are people between the ages of 20 and 24.
- 'Teenagers' are people between the ages of 15 and 19.
- Tables only include variable values for which there are data.

Crashes in Española by Alcohol Involvement



■ All Crashes
■ Alcohol-involved Crashes

Fatal and Injury Crashes in Española by Alcohol Involvement



■ All Fatal and Injury Crashes
■ Alcohol-involved Fatal and Injury Crashes

Passenger Vehicle Seatbelt Usage and Injuries in Española, 1999-2001

Injury Level	2001		2000		1999	
	Total	No Belt	Total	No Belt	Total	No Belt
Killed	0	0	4	3	5	3
Incapacitating injury	14	2	27	4	24	4
Visible injury	54	8	66	14	61	12
Complaint of injury	383	13	361	15	298	13
Unhurt	1,490	24	1,409	21	1,424	28
Total	1,941	47	1,867	57	1,812	60

The Seven Intersections in Española with the Most Crashes, 2001

Intersection	Crashes			People	
	Total	Fatal	Injury	Killed	Injured
Fairview Ln @ Riverside Dr - NM 68	30	0	9	0	14
La Joya St @ Riverside Dr - NM 68	17	0	5	0	12
NM 584 @ Onate St US 84/285	14	0	7	0	14
NM 584 @ Riverside Dr - NM 68	34	0	11	0	13
NM 584 @ US 84/285 (to Santa Fe)	15	0	6	0	13
Riverside Dr - NM 68 @ Santa Cruz Rd NM 76	27	0	11	0	22
Riverside Dr - NM 68 @ US 84/285 (to Santa Fe)	15	0	9	0	17

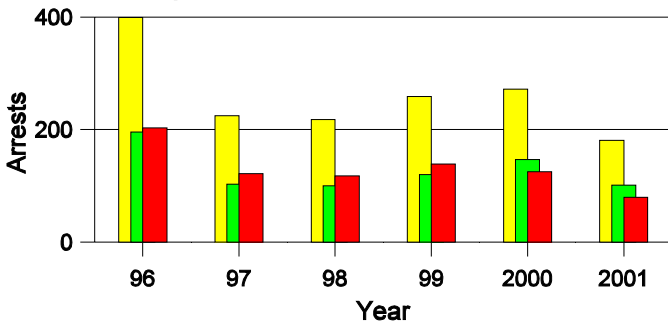
**Lifetime DWI Convictions for Drivers
Convicted of DWI Violations in Española, 2001**

Convictions	Since 1997	Since 1971
1st	54	41
2nd	23	18
3rd	11	22
4th	2	5
5th	0	4
6th	0	0
7th	0	0
8th	0	0
9th	0	0
10 or more	0	0
Total	90	90

Convictions are counts of people convicted of DWI by 7/2002 for violations in 2001 in Española.
Convictions are not comparable to arrests.

DWI Arrests in Española

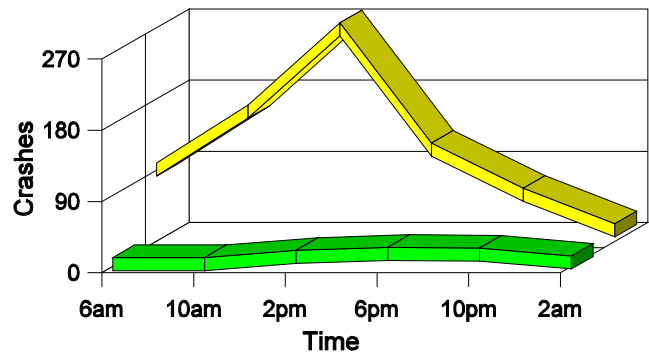
Showing First Arrests and Repeat Offenders



■ Total DWI Arrests
■ First DWI Arrests
■ Repeat DWI Arrests

Crashes in Española

by Hour and Alcohol Involvement



■ All Crashes
■ Alcohol-involved Crashes

Crashes in Española by Class, 2001

Class	Crashes					People	
	Total	% of Total	Fatal	% of Fatal	Injury	Killed	Injured
Other vehicle	634	89	0	0	261	0	437
Pedestrian	2	0	1	100	1	1	3
Fixed object	38	5	0	0	12	0	17
Veh. on other roadway	3	0	0	0	1	0	1
Parked vehicle	12	2	0	0	1	0	2
Overturn	12	2	0	0	9	0	14
Other non-collision	7	1	0	0	3	0	4
Pedalcyclist	1	0	0	0	1	0	1
Animal	1	0	0	0	0	0	0
Other object	2	0	0	0	0	0	0
Total	712	100	1	100	289	1	479

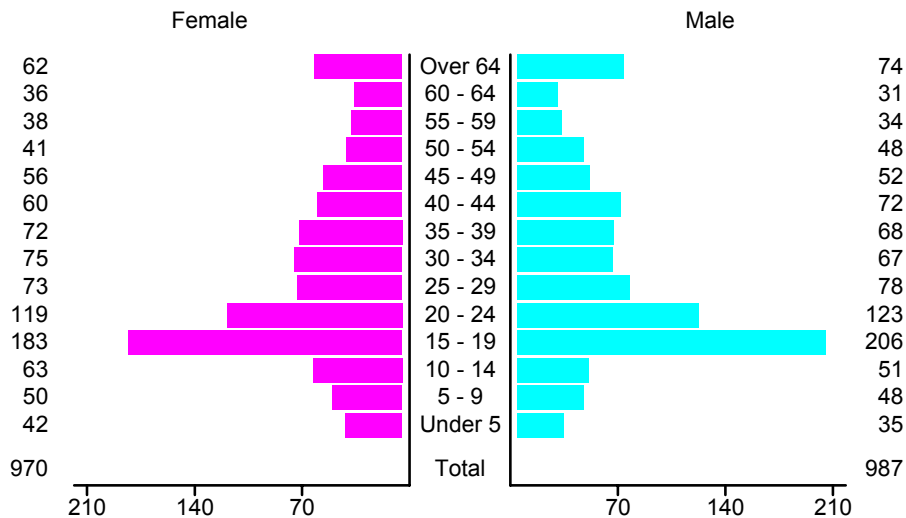
Crashes in Española by Vehicle Type, 2001

Vehicle Type	Vehicles				People		
	Total	% of Total	Fatal	% of Fatal	Injury	Killed	Injured
Passenger car	842	60	1	50	350	0	333
Pickup	343	24	0	0	145	0	101
Semi	6	0	0	0	2	0	0
Bus	3	0	0	0	1	0	1
Motorcycle	18	1	0	0	16	0	16
Pedalcyclist	1	0	0	0	1	0	1
Pedestrian	2	0	1	50	1	1	1
Van/4 WD	140	10	0	0	48	0	24
Other	6	0	0	0	3	0	0
Unknown	54	4	0	0	17	0	2
Total	1,415	100	2	100	584	1	479

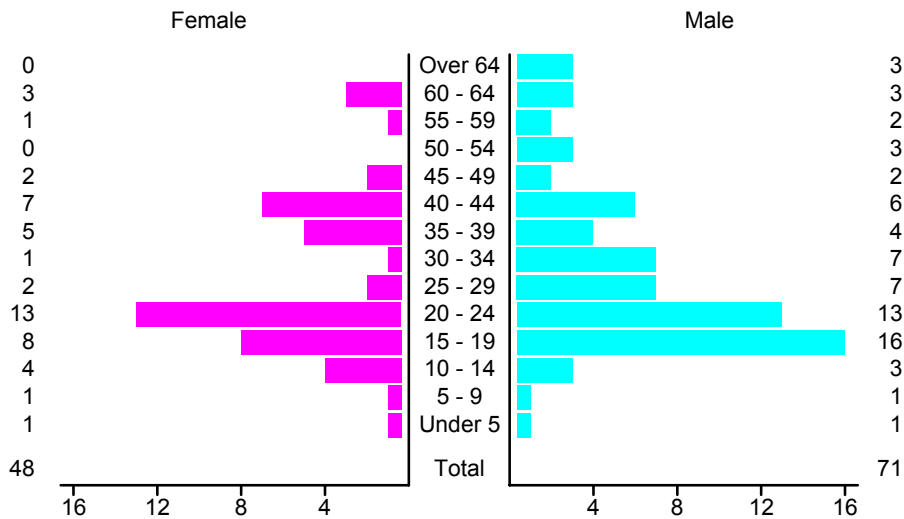
Crashes in Española by Top Contributing Factor, 2001

Contributing Factor	Crashes				People		
	Total	% of Total	Fatal	% of Fatal	Injury	Killed	Injured
Alcohol involvement	54	8	0	0	32	0	58
Passing a red light	20	3	0	0	9	0	18
Failing to yield	172	24	0	0	75	0	129
Excessive speed	74	10	0	0	27	0	51
Driving left of center	13	2	0	0	7	0	14
Following too close	183	26	0	0	77	0	116
Improper turning	29	4	0	0	9	0	16
Improper overtaking	8	1	0	0	1	0	2
Improper backing	17	2	0	0	0	0	0
Inop. traffic control	2	0	0	0	2	0	6
Mechanical defect	6	1	0	0	3	0	3
Driver inattention	86	12	0	0	33	0	48
Improper driving	14	2	0	0	6	0	7
Other	34	5	1	100	8	1	11
Total	712	100	1	100	289	1	479

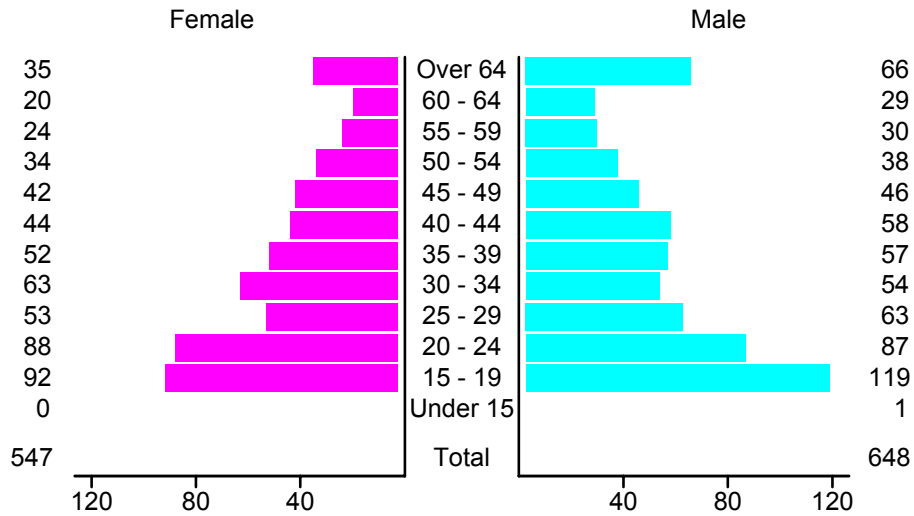
People in Crashes by Age and Sex in Española, 2001



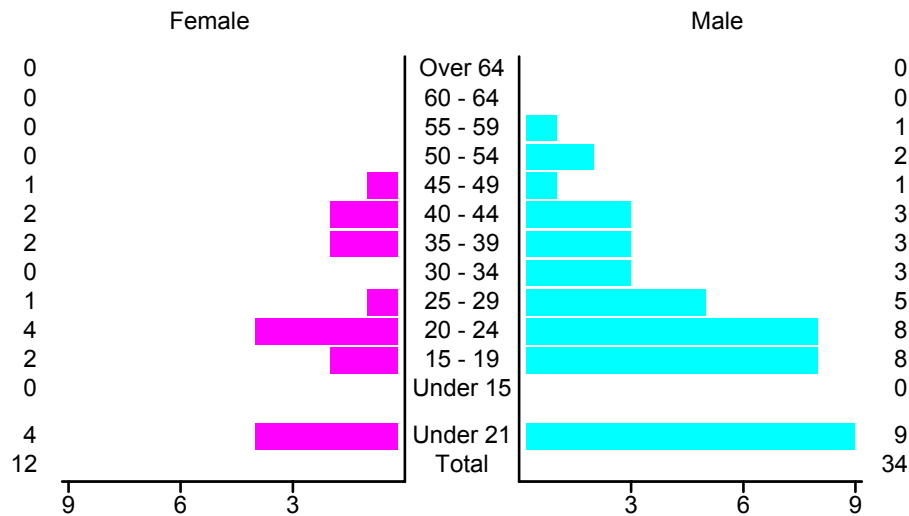
People in Alcohol-Involved Crashes in Española, 2001 by Age and Sex



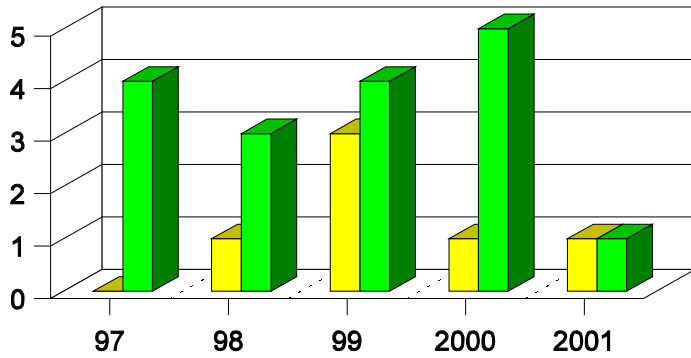
Drivers in Crashes by Age and Sex in Española 2001



Alcohol-Involved Drivers in Crashes in Española, 2001 by Age and Sex

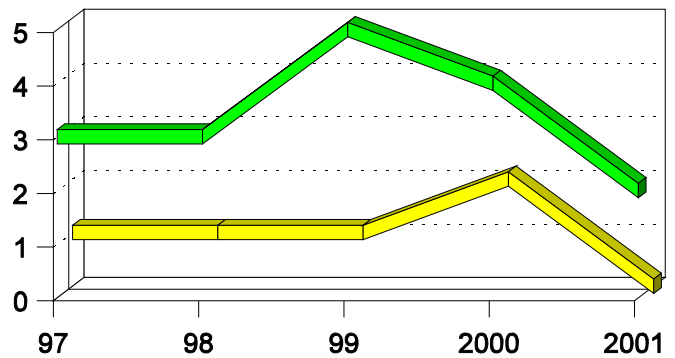


**Pedestrian in Crashes in Española
by Pedestrian Alcohol-involvement, 1997-2001**



■ Alcohol-involved Pedestrians
■ Pedestrians Not Alcohol-involved

**Pedestrian in Crashes in Española
by Age Group, 1997-2001**



■ Pedestrians 12 and Younger
■ Pedestrians 13 and Older

'Teenagers' and Young Adults in Crashes in Española by Vehicle Type, 2001

Vehicle	'Teenage' Drivers			Young Adult Drivers		
	Total	Fatal	Injury	Total	Fatal	Injury
Passenger car	157	0	77	122	1	56
Pickup	39	0	13	41	0	20
Semi	0	0	0	1	0	0
Motorcycle	1	0	1	2	0	2
Van/4 WD	14	0	3	9	0	6
Total	211	0	94	175	1	84

'Teenagers' and Young Adults Killed and Injured in Crashes by Year in Española, 1992-2001

Year	'Teenagers'				Young Adults			
	All Crashes		Alcohol Crashes		All Crashes		Alcohol Crashes	
	Killed	Injured	Killed	Injured	Killed	Injured	Killed	Injured
2001	0	96	0	13	0	56	0	14
2000	1	80	0	15	2	57	0	10
1999	1	65	1	7	0	53	0	9
1998	0	62	0	8	1	54	0	5
1997	1	45	1	10	0	43	0	8
1996	3	74	3	11	2	45	2	7
1995	0	122	0	21	0	62	0	9
1994	0	63	0	16	0	48	0	15
1993	0	66	0	12	0	55	0	12
1992	0	60	0	15	0	57	0	17