

Grant County Report, 2001

Demographics

In 2001, there were 8,827 licensed drivers in Grant County. Of these, there were 4,313 females and 4,514 males. The population in Grant County was 20,457. The total number of crashes in 2001 was 315, yielding a crash rate of 15 per thousand people (The total number of crashes 315 divided by the population 20,457 multiplied by 1,000). The corresponding rate for the state was 27 per thousand people.

General Crash Information

Since 1992 the number of crashes has shown no consistent pattern. Fatal and injury crashes have also shown no consistent pattern since 1992. Belt usage (as a percentage) has stayed about the same as last year, while belt usage in crashes involving visible and incapacitating injuries has decreased.

Alcohol-related Crash Information

Information about alcohol-involved crashes is included in all sections of this report. Of the 106 people convicted of DWI in Grant County in 2001, 56 percent were first-time DWI convictions (Number of first convictions 59 divided by the total number of people convicted 106 multiplied by 100). The corresponding percentage for the state was 57.

Crash Specifics

Crashes involving other vehicles were the most common class, accounting for 28 percent of all crashes. Crashes involving overturns resulted in fatalities. Passenger cars were the vehicle type most often involved in crashes, accounting for 45 percent of all vehicles in crashes. Pickups accounted for 33 percent of vehicles involved in crashes. Together these two vehicle types comprised 74 percent of the vehicles involved in injury crashes. The two most common top contributing factors were excessive speed and driver inattention. There were three fatal crashes in 2001. The top contributing factors for the fatal crashes were alcohol involvement, and driver inattention.

People in Crashes

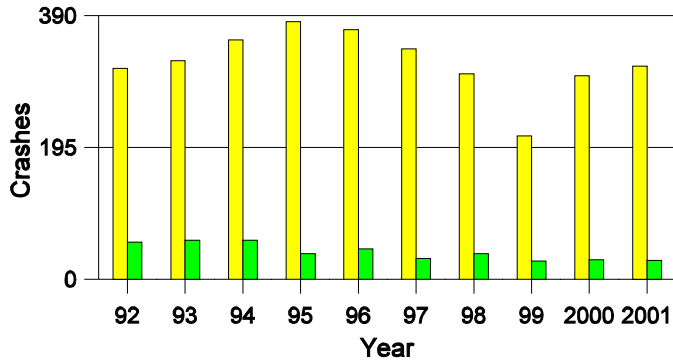
Overall, males were 62 percent of drivers in crashes, although they account for only 51 percent of licensed drivers in Grant County. There were no pedestrians involved in crashes. In 2001, no 'teenagers' or young adults were killed in crashes in Grant County. Statewide 19 percent of alcohol-involved drivers were under 21; in Grant County 40 percent were under 21.

Note: The 1999 crash file contains 15% fewer crashes than the 1998 file. This may be due to problems implementing the new system after the old system failed, or to under reporting. Care should be used in interpreting differences between 1999 and other years in this report.

- Crashes in cities with a population greater than 4,000 are not included in this report.
- Location of arrest/conviction was determined by police agency/court location, not driver residence.
- Crashes and drivers were counted by the city of occurrence/residence.
- Population was counted according to the Census definition, using 2000 estimates.
- Young adults are people between the ages of 20 and 24.
- 'Teenagers' are people between the ages of 15 and 19.
- Tables only include variable values for which there are data.

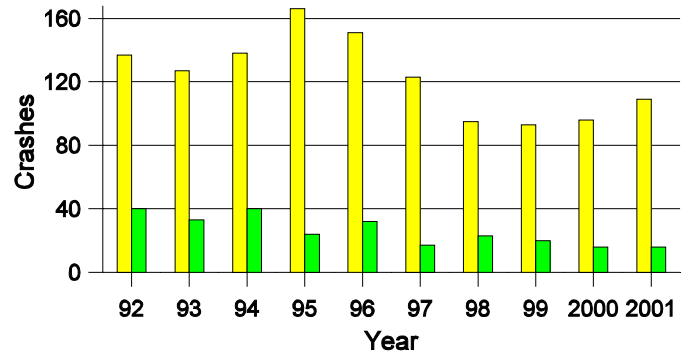
Crashes in Grant County

by Alcohol Involvement



Fatal and Injury Crashes in Grant County

by Alcohol Involvement



Passenger Vehicle Seatbelt Usage and Injuries in Grant County, 1999-2001

Injury Level	2001		2000		1999	
	Total	No Belt	Total	No Belt	Total	No Belt
Killed	2	2	2	2	8	5
Incapacitating injury	35	17	34	9	50	19
Visible injury	49	10	45	9	31	4
Complaint of injury	51	4	42	3	45	2
Unhurt	459	16	403	20	268	5
Total	596	49	526	43	402	35

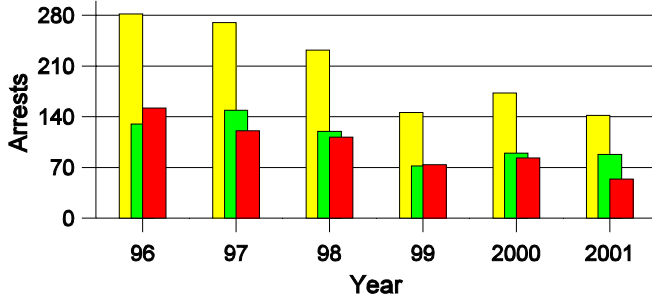
Lifetime DWI Convictions for Drivers Convicted of DWI Violations in Grant County, 2001

Convictions	Since 1997	Since 1971
1st	78	59
2nd	23	27
3rd	5	11
4th	0	2
5th	0	3
6th	0	2
7th	0	1
8th	0	0
9th	0	0
10 or more	0	1
Total	106	106

Convictions are counts of people convicted of DWI by 7/2002 for violations in 2001 in Grant County. Convictions are not comparable to arrests.

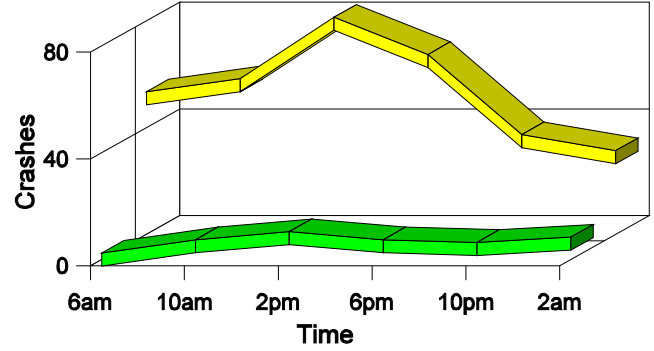
DWI Arrests in Grant County

Showing First Arrests and Repeat Offenders



Crashes in Grant County

by Hour and Alcohol Involvement



Crashes in Grant County by Class, 2001

Class	Crashes					People	
	Total	% of Total	Fatal	% of Fatal	Injury	Killed	Injured
Other vehicle	87	28	0	0	35	0	52
Fixed object	74	23	0	0	22	0	27
Parked vehicle	21	7	0	0	1	0	2
Overturn	61	19	3	100	36	3	61
Other non-collision	9	3	0	0	1	0	1
Animal	61	19	0	0	11	0	14
Other object	2	1	0	0	0	0	0
Total	315	100	3	100	106	3	157

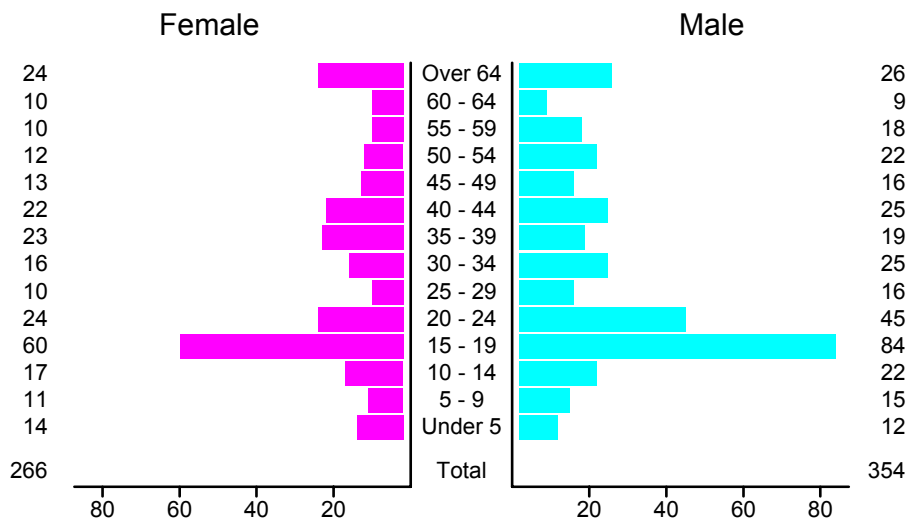
Crashes in Grant County by Vehicle Type, 2001

Vehicle Type	Vehicles					People	
	Total	% of Total	Fatal	% of Fatal	Injury	Killed	Injured
Passenger car	200	45	0	0	70	0	66
Pickup	149	33	0	0	39	0	39
Semi	12	3	0	0	3	0	1
Motorcycle	8	2	1	33	7	1	9
Van/4 WD	58	13	2	67	23	2	38
Other	11	2	0	0	5	0	4
Unknown	8	2	0	0	0	0	0
Total	446	100	3	100	147	3	157

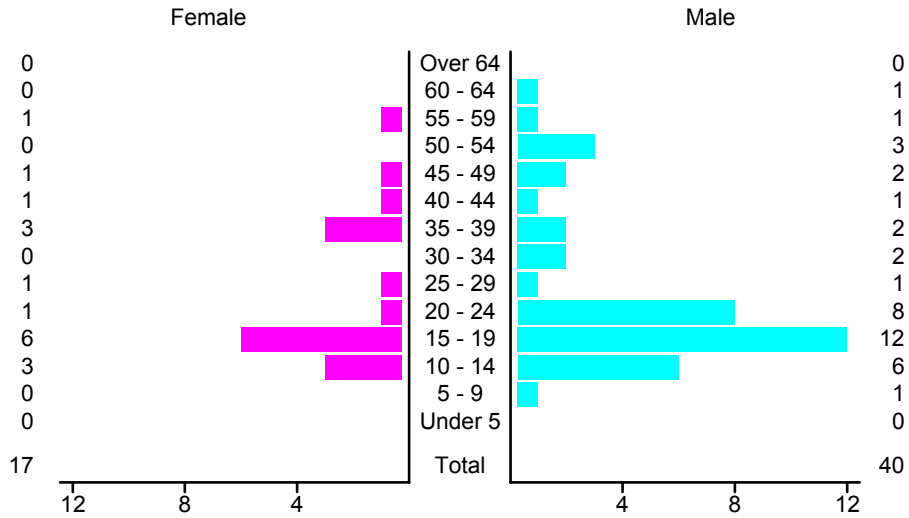
Crashes in Grant County by Top Contributing Factor, 2001

Contributing Factor	Crashes				People		
	Total	% of Total	Fatal	% of Fatal	Injury	Killed	Injured
Alcohol involvement	28	9	2	67	14	2	30
Passing a red light	7	2	0	0	3	0	4
Failing to yield	14	4	0	0	5	0	7
Excessive speed	68	22	0	0	27	0	42
Driving left of center	12	4	0	0	6	0	10
Following too close	17	5	0	0	10	0	11
Improper turning	5	2	0	0	1	0	2
Improper overtaking	2	1	0	0	1	0	2
Improper backing	12	4	0	0	0	0	0
Mechanical defect	8	3	0	0	3	0	5
Driver inattention	51	16	1	33	19	1	23
Improper driving	9	3	0	0	4	0	4
Other	82	26	0	0	13	0	17
Total	315	100	3	100	106	3	157

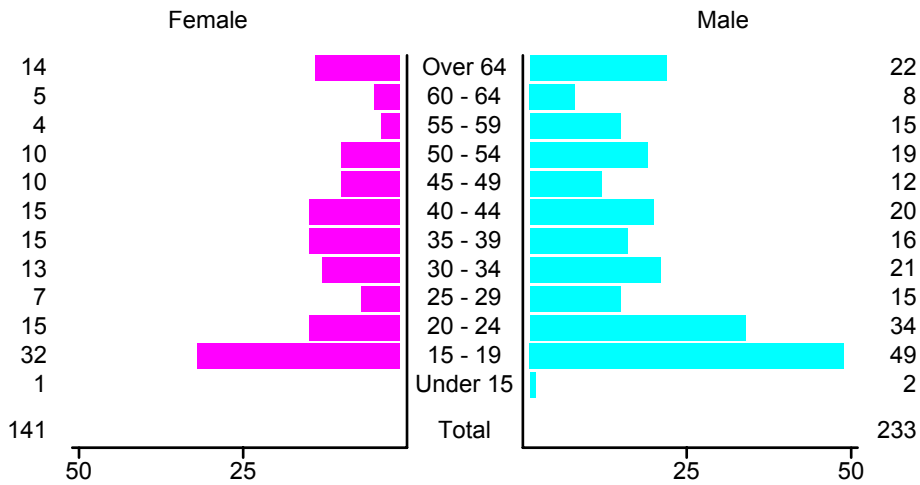
People in Crashes by Age and Sex in Grant County, 2001



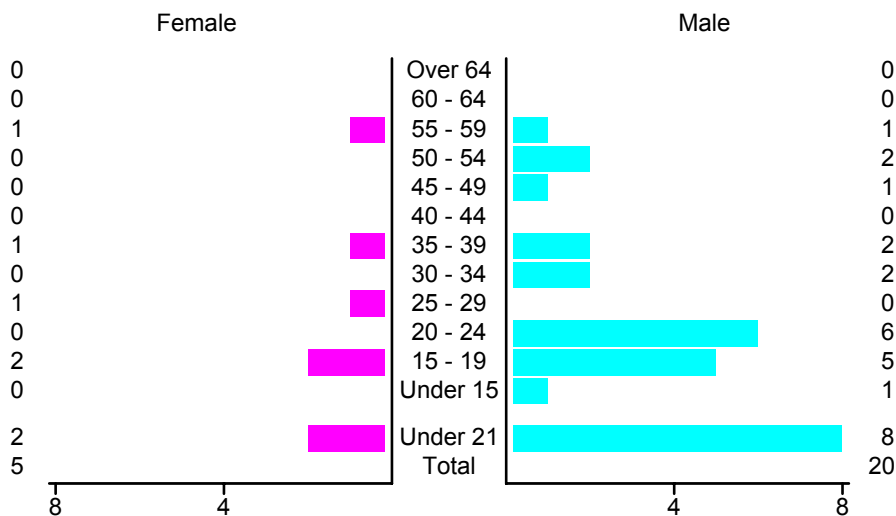
People in Alcohol-Involved Crashes in Grant County, 2001 by Age and Sex



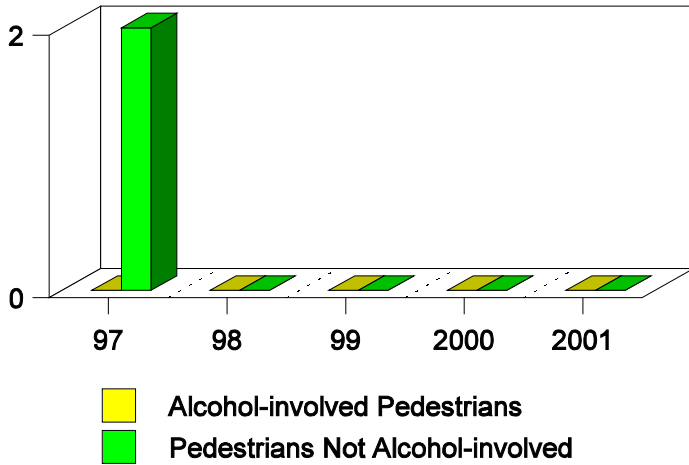
Drivers in Crashes by Age and Sex in Grant County, 2001



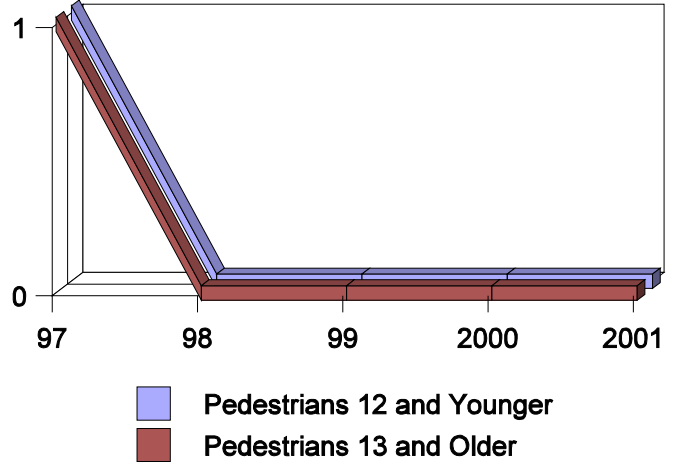
Alcohol-Involved Drivers in Crashes in Grant County, 2001 by Age and Sex



**Pedestrian Crashes in Grant County
by Pedestrian Alcohol-involvement, 1997-2001**



**Pedestrian Crashes in Grant County
by Age Group, 1997-2001**



'Teenagers' and Young Adults in Crashes in Grant County by Vehicle Type, 2001

Vehicle	'Teenage' Drivers			Young Adult Drivers		
	Total	Fatal	Injury	Total	Fatal	Injury
Passenger car	41	0	18	29	0	7
Pickup	30	0	10	16	0	4
Semi	0	0	0	1	0	0
Motorcycle	1	0	1	1	0	1
Van/4 WD	8	0	4	1	0	1
Other	1	0	1	1	0	1
Total	81	0	34	49	0	14

'Teenagers' and Young Adults in Crashes in Grant County, 1992-2001

Year	'Teenagers'				Young Adults			
	All Crashes		Alcohol Crashes		All Crashes		Alcohol Crashes	
	Killed	Injured	Killed	Injured	Killed	Injured	Killed	Injured
2001	0	36	0	11	0	18	0	8
2000	2	30	1	10	0	23	0	6
1999	2	21	1	10	3	21	1	1
1998	0	27	0	7	0	14	0	1
1997	2	41	0	2	1	28	0	5
1996	1	55	1	10	0	32	0	6
1995	1	58	0	8	1	33	0	14
1994	4	43	3	11	2	30	1	12
1993	1	44	0	13	0	26	0	17
1992	0	44	0	12	0	46	0	18