

Luna County Report, 2001

Demographics

In 2001, there were 1,412 licensed drivers in Luna County. Of these, there were 541 females and 871 males. The population in Luna County was 10,900. The total number of crashes in 2001 was 245, yielding a crash rate of 22 per thousand people (The total number of crashes 245 divided by the population 10,900 multiplied by 1,000). The corresponding rate for the state was 27 per thousand people.

General Crash Information

Since 1992 the number of crashes has shown no consistent pattern. Fatal and injury crashes have also shown no consistent pattern since 1992. Belt usage (as a percentage) has increased slightly from last year, while belt usage in crashes involving visible and incapacitating injuries has decreased.

Alcohol-related Crash Information

Information about alcohol-involved crashes is included in all sections of this report. Of the 69 people convicted of DWI in Luna County in 2001, 59 percent were first-time DWI convictions (Number of first convictions 41 divided by the total number of people convicted 69 multiplied by 100). The corresponding percentage for the state was 57.

Crash Specifics

Crashes involving other vehicles were the most common class, accounting for 29 percent of all crashes. Crashes involving overturns, an other vehicle, and a pedestrian resulted in fatalities. Passenger cars were the vehicle type most often involved in crashes, accounting for 36 percent of all vehicles in crashes. Pickups accounted for 27 percent of vehicles involved in crashes. Together these two vehicle types comprised 66 percent of the vehicles involved in injury crashes. The two most common top contributing factors were driver attention, and excessive speed. There were 10 fatal crashes in 2001. The two most common top contributing factors for the fatal crashes were driver inattention, and alcohol involvement.

People in Crashes

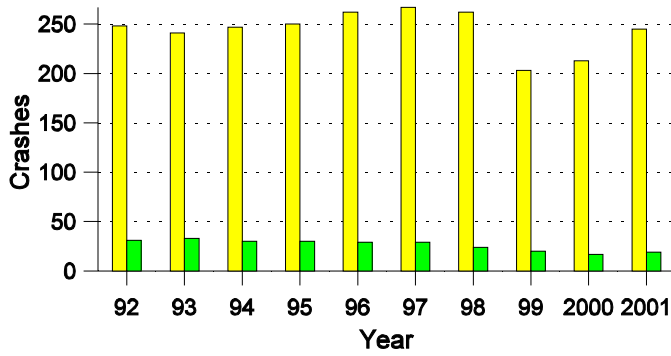
Overall, males were 73 percent of drivers in crashes, although they account for only 62 percent of licensed drivers in Luna County. Two pedestrians were involved in crashes in 2001. In 2001, one 'teenager' and two young adults were killed in crashes in Luna County. Statewide 19 percent of alcohol-involved drivers were under 21; in Luna County 39 percent were under 21.

Note: The 1999 crash file contains 15% fewer crashes than the 1998 file. This may be due to problems implementing the new system after the old system failed, or to under reporting. Care should be used in interpreting differences between 1999 and other years in this report.

- Crashes in cities with a population greater than 4,000 are not included in this report.
- Location of arrest/conviction was determined by police agency/court location, not driver residence.
- Crashes and drivers were counted by the city of occurrence/residence.
- Population was counted according to the Census definition, using 2000 estimates.
- Young adults are people between the ages of 20 and 24.
- 'Teenagers' are people between the ages of 15 and 19.
- Tables only include variable values for which there are data.

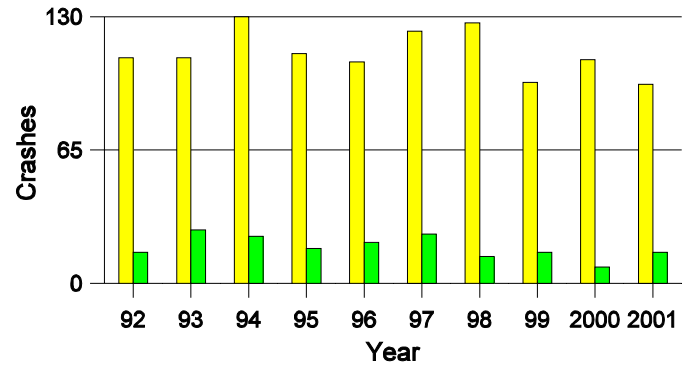
Crashes in Luna County

by Alcohol Involvement



Fatal and Injury Crashes in Luna County

by Alcohol Involvement



Passenger Vehicle Seatbelt Usage and Injuries in Luna County, 1999-2001

Injury Level	2001		2000		1999	
	Total	No Belt	Total	No Belt	Total	No Belt
Killed	8	4	4	4	13	10
Incapacitating injury	52	21	35	10	66	16
Visible injury	49	7	64	10	63	12
Complaint of injury	44	3	62	5	37	4
Unhurt	315	10	229	11	224	17
Total	468	45	394	40	403	59

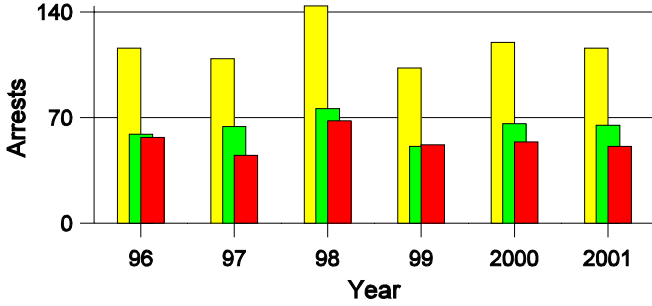
Lifetime DWI Convictions for Drivers Convicted of DWI Violations in Luna County, 2001

Convictions	Since 1997	Since 1971
1st	57	41
2nd	9	16
3rd	2	4
4th	1	5
5th	0	1
6th	0	1
7th	0	1
8th	0	0
9th	0	0
10 or more	0	0
Total	69	69

Convictions are counts of people convicted of DWI by 7/2002 for violations in 2001 in Luna County. Convictions are not comparable to arrests.

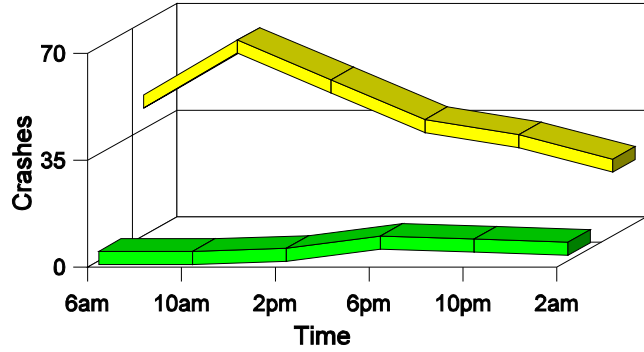
DWI Arrests in Luna County

Showing First Arrests and Repeat Offenders



Crashes in Luna County

by Hour and Alcohol Involvement



Crashes in Luna County by Class, 2001

Class	Crashes					People	
	Total	% of Total	Fatal	% of Fatal	Injury	Killed	Injured
Other vehicle	71	29	1	10	23	2	49
Pedestrian	2	1	1	10	1	1	1
Fixed object	53	22	0	0	17	0	26
Parked vehicle	4	2	0	0	0	0	0
Overturn	60	24	8	80	34	8	72
Other non-collision	28	11	0	0	7	0	17
Railroad train	1	0	0	0	1	0	2
Animal	16	7	0	0	3	0	3
Other object	10	4	0	0	1	0	1
Total	245	100	10	100	87	11	171

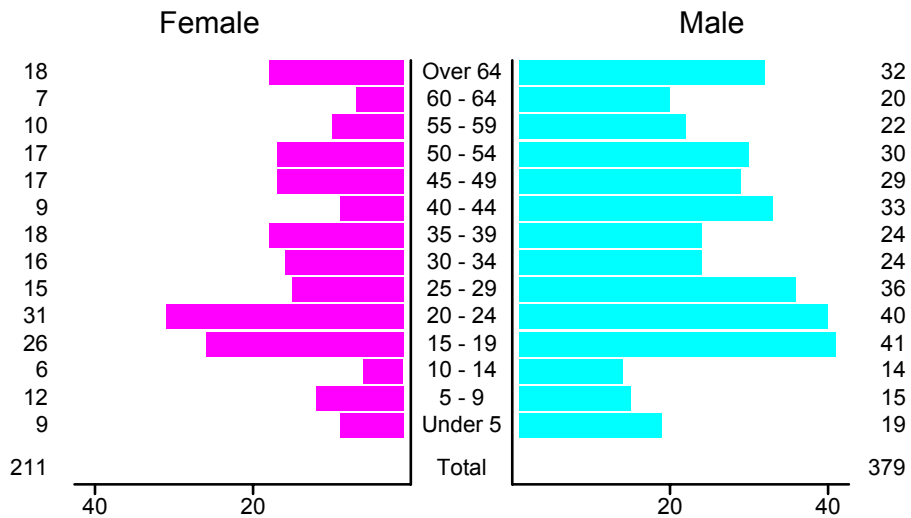
Crashes in Luna County by Vehicle Type, 2001

Vehicle Type	Vehicles					People	
	Total	% of Total	Fatal	% of Fatal	Injury	Killed	Injured
Passenger car	122	36	7	47	52	5	75
Pickup	91	27	1	7	25	0	28
Semi	53	16	2	13	14	1	13
Bus	4	1	0	0	1	0	1
Motorcycle	1	0	0	0	1	0	2
Pedestrian	2	1	1	7	1	1	1
Van/4 WD	45	13	4	27	20	4	50
Other	7	2	0	0	2	0	1
Unknown	10	3	0	0	1	0	0
Total	335	100	15	100	117	11	171

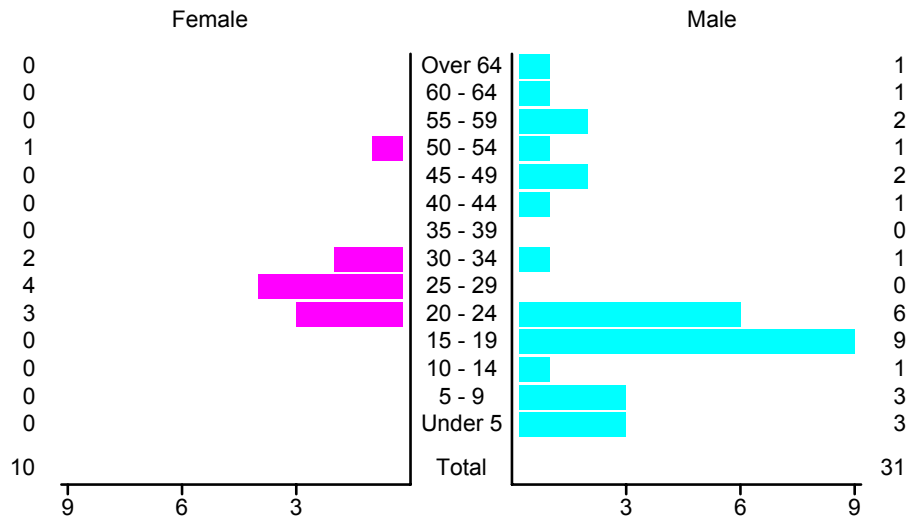
Crashes in Luna County by Top Contributing Factor, 2001

Contributing Factor	Crashes				People		
	Total	% of Total	Fatal	% of Fatal	Injury	Killed	Injured
Alcohol involvement	19	8	3	30	12	3	19
Passing a red light	4	2	0	0	3	0	5
Failing to yield	7	3	0	0	2	0	5
Excessive speed	38	16	1	10	15	2	33
Driving left of center	12	5	0	0	8	0	8
Following too close	8	3	0	0	1	0	1
Improper turning	7	3	0	0	2	0	8
Improper overtaking	5	2	0	0	0	0	0
Improper backing	4	2	0	0	1	0	1
Mechanical defect	21	9	0	0	6	0	10
Driver inattention	58	24	5	50	20	5	47
Improper driving	6	2	1	10	4	1	9
Other	56	23	0	0	13	0	25
Total	245	100	10	100	87	11	171

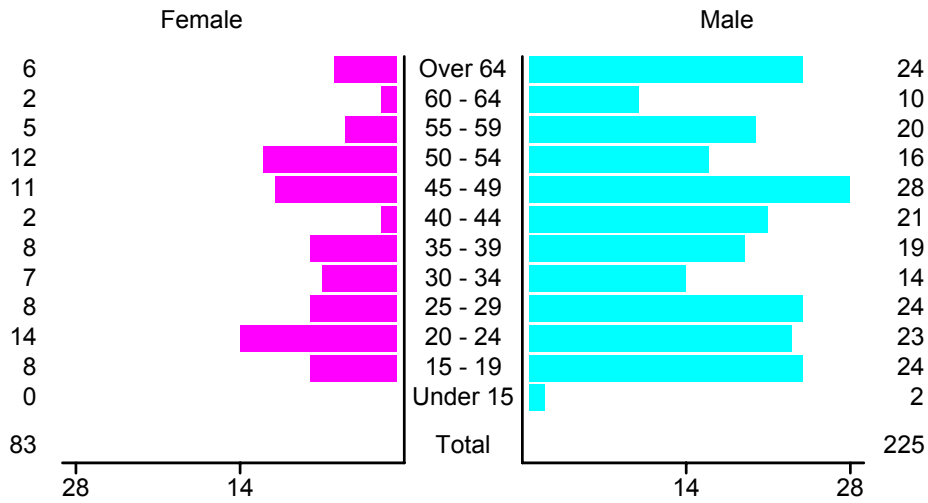
People in Crashes by Age and Sex in Luna County, 2001



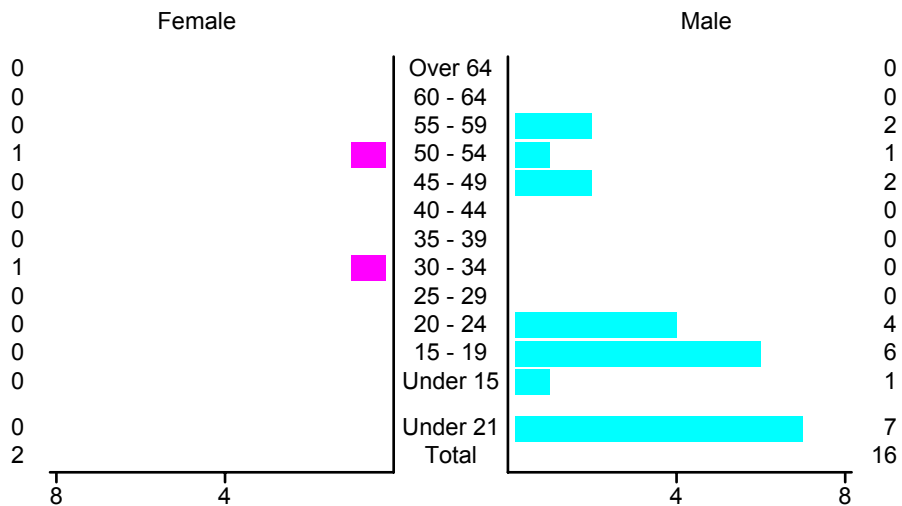
People in Alcohol-Involved Crashes in Luna County, 2001 by Age and Sex



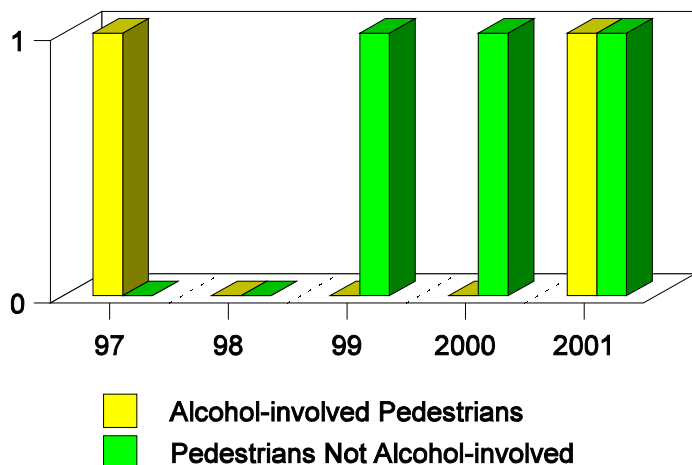
Drivers in Crashes by Age and Sex in Luna County, 2001



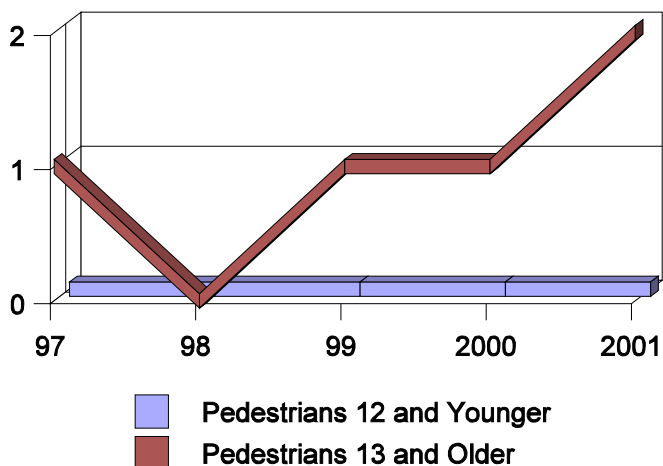
Alcohol-Involved Drivers in Crashes in Luna County, 2001 by Age and Sex



**Pedestrian Crashes in Luna County
by Pedestrian Alcohol-involvement, 1997-2001**



**Pedestrian Crashes in Luna County
by Age Group, 1997-2001**



'Teenagers' and Young Adults in Crashes in Luna County by Vehicle Type, 2001

Vehicle	'Teenage' Drivers			Young Adult Drivers		
	Total	Fatal	Injury	Total	Fatal	Injury
Passenger car	21	1	12	20	2	6
Pickup	9	0	1	9	0	3
Semi	0	0	0	3	0	3
Pedestrian	1	1	0	0	0	0
Van/4 WD	2	1	1	4	0	3
Other	0	0	0	1	0	0
Total	33	3	14	37	2	15

'Teenagers' and Young Adults in Crashes in Luna County, 1992-2001

Year	'Teenagers'				Young Adults			
	All Crashes		Alcohol Crashes		All Crashes		Alcohol Crashes	
	Killed	Injured	Killed	Injured	Killed	Injured	Killed	Injured
2001	1	21	0	4	2	22	0	3
2000	0	23	0	0	0	22	0	4
1999	0	32	0	3	1	27	1	1
1998	0	30	0	0	1	27	1	4
1997	3	37	0	11	1	27	1	4
1996	1	17	0	3	1	22	0	3
1995	1	28	1	7	2	19	0	4
1994	1	28	1	3	1	25	0	8
1993	0	22	0	5	1	27	1	7
1992	1	18	0	0	1	31	0	5