

# Otero County Report, 2001

## Demographics

In 2001, there were 12,978 licensed drivers in Otero County. Of these, there were 6,387 females and 6,591 males. The population in Otero County was 26,716. The total number of crashes in 2001 was 537, yielding a crash rate of 20 per thousand people (The total number of crashes 537 divided by the population 26,716 multiplied by 1,000). The corresponding rate for the state was 27 per thousand people.

## General Crash Information

Since 1992 the number of crashes has shown no consistent pattern. Fatal and injury crashes have also shown no consistent pattern since 1992. Belt usage (as a percentage) has increased from last year, while belt usage in crashes involving visible and incapacitating injuries has also increased.

## Alcohol-related Crash Information

Information about alcohol-involved crashes is included in all sections of this report. Of the 128 people convicted of DWI in Otero County in 2001, 59 percent were first-time DWI convictions (Number of first convictions 76 divided by the total number of people convicted 128 multiplied by 100). The corresponding percentage for the state was 57.

## Crash Specifics

Crashes involving other vehicles were the most common class, accounting for 30 percent of all crashes. Crashes involving overturns, fixed objects, and a pedestrian resulted in fatalities. Passenger cars were the vehicle type most often involved in crashes, accounting for 37 percent of all vehicles in crashes. Pickups accounted for 34 percent of vehicles involved in crashes. Together these two vehicle types comprised 63 percent of the vehicles involved in injury crashes. The two most common top contributing factors were, excessive speed and driver inattention. There were 11 fatal crashes in 2001. The most common top contributing factors for the fatal crashes were alcohol involvement, and excessive speed.

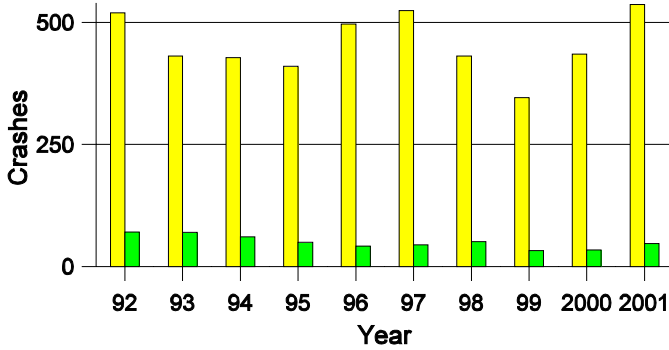
## People in Crashes

Overall, males were 69 percent of drivers in crashes, although they account for only 51 percent of licensed drivers in Otero County. Fewer pedestrians were involved in crashes than last year. In 2001, one 'teenager' and one young adult were killed in crashes in Otero County. Statewide 19 percent of alcohol-involved drivers were under 21; in Otero County 16 percent were under 21.

**Note:** The 1999 crash file contains 15% fewer crashes than the 1998 file. This may be due to problems implementing the new system after the old system failed, or to under reporting. Care should be used in interpreting differences between 1999 and other years in this report.

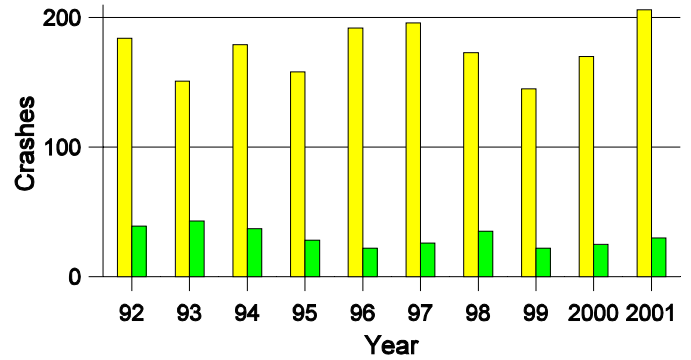
- Crashes in cities with a population greater than 4,000 are not included in this report.
- Location of arrest/conviction was determined by police agency/court location, not driver residence.
- Crashes and drivers were counted by the city of occurrence/residence.
- Population was counted according to the Census definition, using 2000 estimates.
- Young adults are people between the ages of 20 and 24.  
'Teenagers' are people between the ages of 15 and 19.
- Tables only include variable values for which there are data.

### Crashes in Otero County by Alcohol Involvement



■ All Crashes  
■ Alcohol-involved Crashes

### Fatal and Injury Crashes in Otero County by Alcohol Involvement



■ All Fatal and Injury Crashes  
■ Alcohol-involved Fatal and Injury Crashes

### Passenger Vehicle Seatbelt Usage and Injuries in Otero County, 1999-2001

Injury Level	2001		2000		1999	
	Total	No Belt	Total	No Belt	Total	No Belt
Killed	6	5	3	2	1	1
Incapacitating injury	73	12	59	10	46	8
Visible injury	79	11	67	15	64	11
Complaint of injury	101	7	106	4	88	11
Unhurt	738	18	652	24	487	15
<b>Total</b>	<b>997</b>	<b>53</b>	<b>887</b>	<b>55</b>	<b>686</b>	<b>46</b>

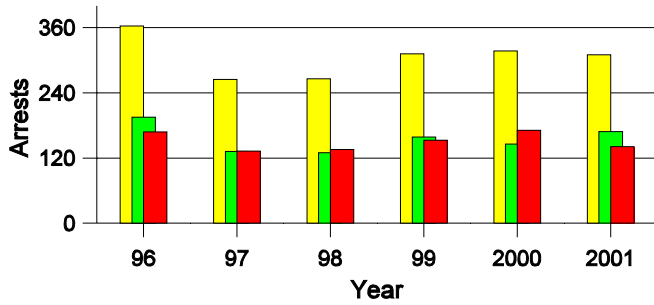
### Lifetime DWI Convictions for Drivers Convicted of DWI Violations in Otero County, 2001

Convictions	Since 1997	Since 1971
1st	97	76
2nd	26	25
3rd	5	18
4th	0	5
5th	0	3
6th	0	1
7th	0	0
8th	0	0
9th	0	0
10 or more	0	0
<b>Total</b>	<b>128</b>	<b>128</b>

Convictions are counts of people convicted of DWI by 7/2002 for violations in 2001 in Otero County.  
 Convictions are not comparable to arrests.

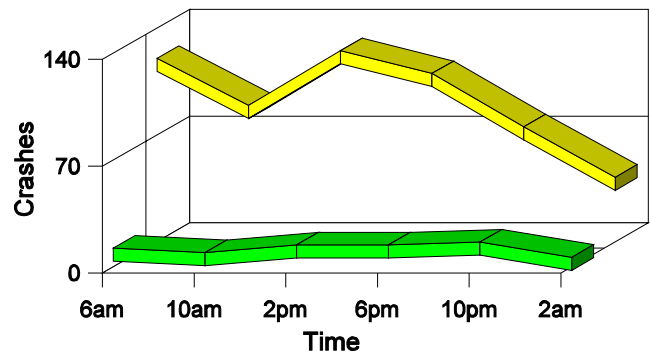
### DWI Arrests in Otero County

Showing First Arrests and Repeat Offenders



### Crashes in Otero County

by Hour and Alcohol Involvement



### Crashes in Otero County by Class, 2001

Class	Crashes				People		
	Total	% of Total	Fatal	% of Fatal	Injury	Killed	Injured
Other vehicle	159	30	0	0	65	0	130
Pedestrian	2	0	1	9	1	1	1
Fixed object	133	25	5	45	36	5	45
Parked vehicle	19	4	0	0	3	0	3
Overturn	93	17	5	45	61	5	101
Other non-collision	43	8	0	0	15	0	18
Pedalcyclist	3	1	0	0	3	0	3
Animal	73	14	0	0	10	0	11
Other object	12	2	0	0	1	0	2
<b>Total</b>	<b>537</b>	<b>100</b>	<b>11</b>	<b>100</b>	<b>195</b>	<b>11</b>	<b>314</b>

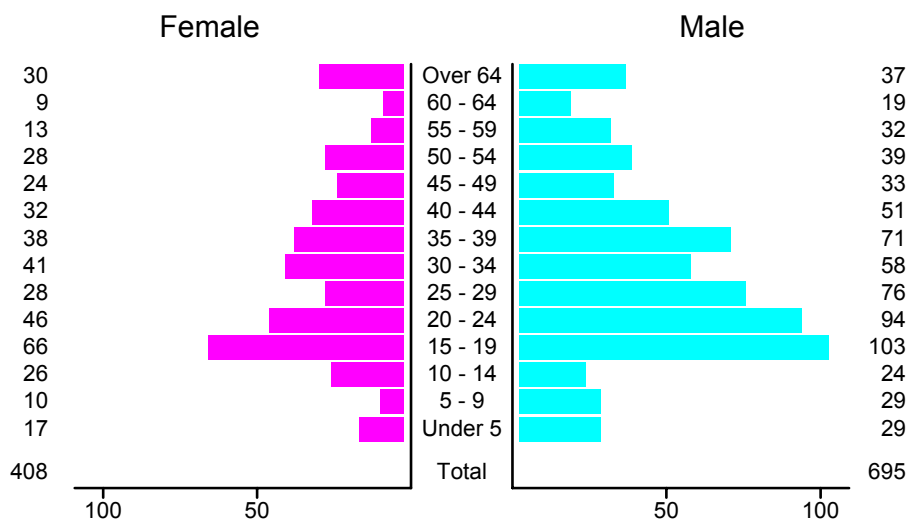
### Crashes in Otero County by Vehicle Type, 2001

Vehicle Type	Vehicles				People		
	Total	% of Total	Fatal	% of Fatal	Injury	Killed	Injured
Passenger car	281	37	4	33	97	3	118
Pickup	252	34	1	8	85	1	82
Semi	44	6	1	8	20	1	13
Bus	2	0	0	0	1	0	0
Motorcycle	30	4	2	17	25	2	27
Pedalcyclist	3	0	0	0	3	0	3
Pedestrian	2	0	1	8	1	1	1
Van/4 WD	118	16	2	17	54	2	69
Other	8	1	1	8	1	1	1
Unknown	12	2	0	0	1	0	0
<b>Total</b>	<b>752</b>	<b>100</b>	<b>12</b>	<b>100</b>	<b>288</b>	<b>11</b>	<b>314</b>

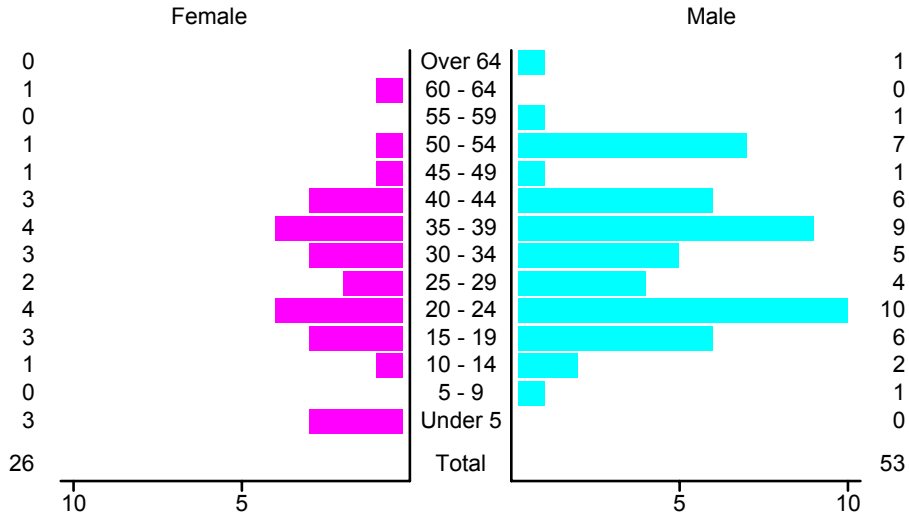
### Crashes in Otero County by Top Contributing Factor, 2001

Contributing Factor	Crashes				People		
	Total	% of Total	Fatal	% of Fatal	Injury	Killed	Injured
Alcohol involvement	45	8	5	45	23	5	38
Passing a red light	14	3	0	0	6	0	8
Failing to yield	19	4	0	0	7	0	13
Excessive speed	110	20	3	27	51	3	92
Driving left of center	30	6	2	18	12	2	27
Following too close	33	6	0	0	14	0	30
Improper turning	7	1	0	0	3	0	6
Improper overtaking	6	1	0	0	2	0	2
Improper backing	8	1	0	0	0	0	0
Inop. traffic control	1	0	0	0	1	0	3
Mechanical defect	17	3	0	0	4	0	5
Driver inattention	80	15	1	9	32	1	42
Improper driving	13	2	0	0	3	0	3
Other	154	29	0	0	37	0	45
<b>Total</b>	<b>537</b>	<b>100</b>	<b>11</b>	<b>100</b>	<b>195</b>	<b>11</b>	<b>314</b>

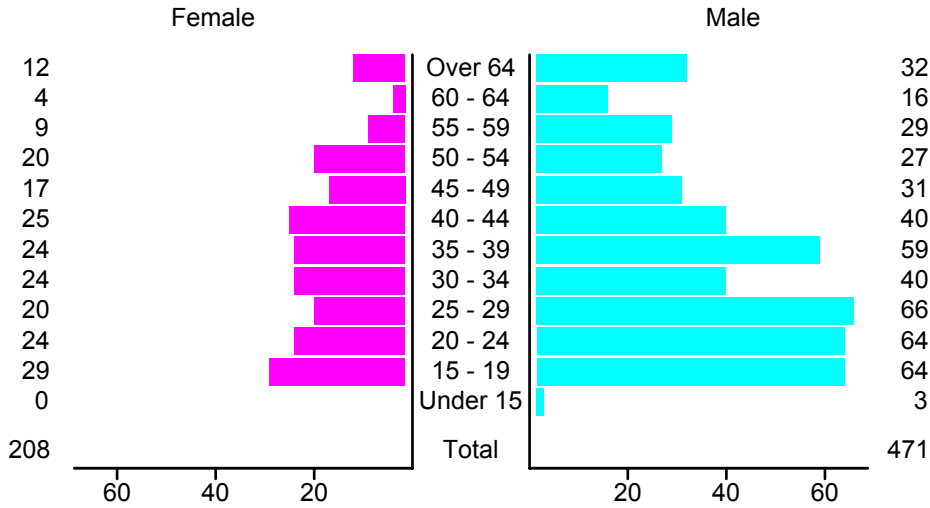
### People in Crashes by Age and Sex in Otero County, 2001



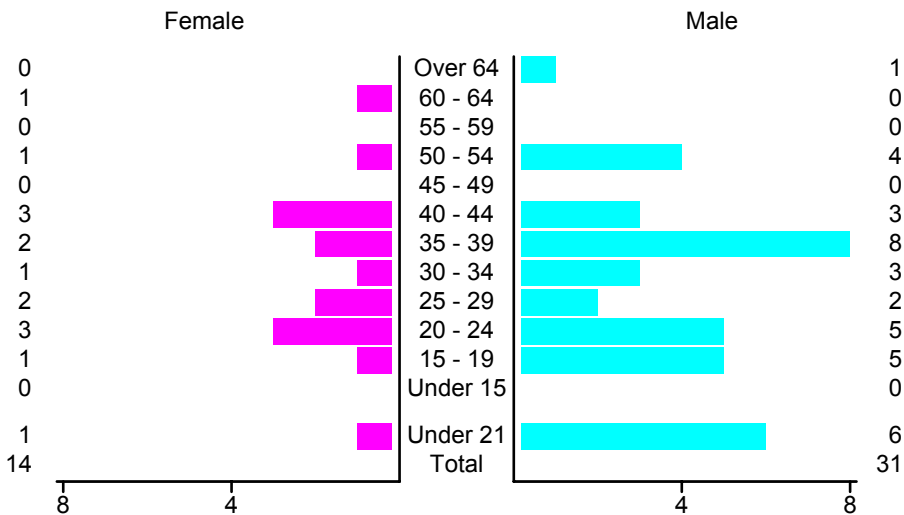
### People in Alcohol-Involved Crashes in Otero County, 2001 by Age and Sex



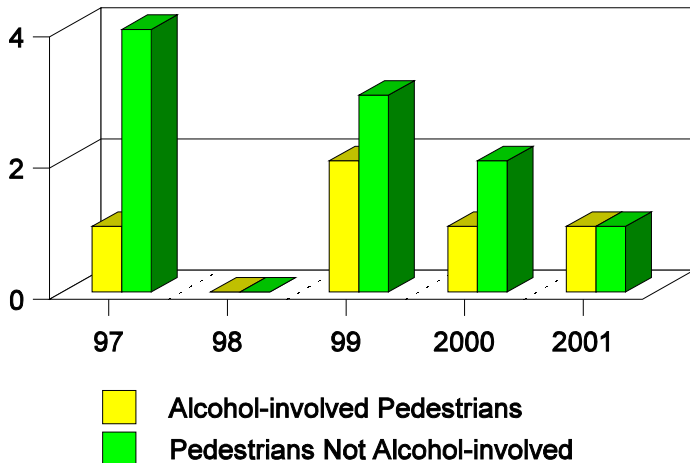
### Drivers in Crashes by Age and Sex in Otero County, 2001



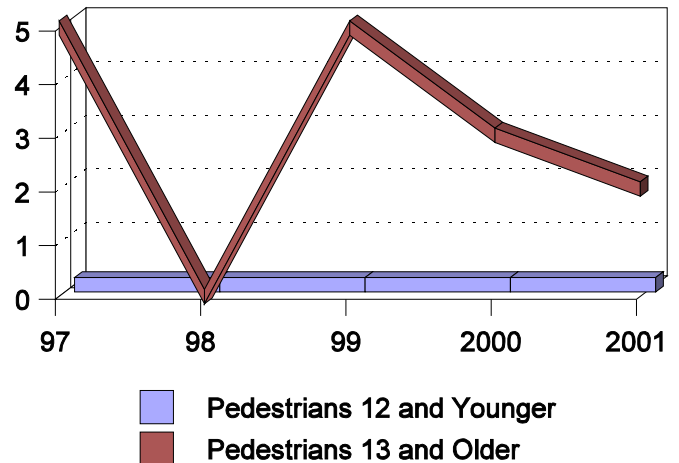
### Alcohol-Involved Drivers in Crashes in Otero County, 2001 by Age and Sex



**Pedestrian Crashes in Otero County  
by Pedestrian Alcohol-involvement, 1997-2001**



**Pedestrian Crashes in Otero County  
by Age Group, 1997-2001**



**'Teenagers' and Young Adults in Crashes in Otero County by Vehicle Type, 2001**

Vehicle	'Teenage' Drivers			Young Adult Drivers		
	Total	Fatal	Injury	Total	Fatal	Injury
Passenger car	53	2	24	43	1	14
Pickup	27	0	8	27	0	10
Semi	0	0	0	3	0	1
Motorcycle	2	0	2	3	0	2
Pedestrian	0	0	0	1	0	1
Van/4 WD	10	0	4	12	0	6
Unknown	1	0	0	0	0	0
<b>Total</b>	<b>93</b>	<b>2</b>	<b>38</b>	<b>89</b>	<b>1</b>	<b>34</b>

**'Teenagers' and Young Adults in Crashes in Otero County, 1992-2001**

Year	'Teenagers'				Young Adults			
	All Crashes		Alcohol Crashes		All Crashes		Alcohol Crashes	
	Killed	Injured	Killed	Injured	Killed	Injured	Killed	Injured
2001	1	55	0	4	1	36	0	15
2000	0	49	0	10	1	47	1	4
1999	0	52	0	3	0	23	0	8
1998	1	46	0	8	0	35	0	8
1997	2	55	1	3	1	49	1	4
1996	1	48	1	2	2	35	0	5
1995	3	44	0	5	2	36	2	9
1994	0	59	0	9	4	37	3	16
1993	0	43	0	9	2	38	0	9
1992	0	32	0	6	0	40	0	3