

San Juan County Report, 2001

Demographics

In 2001, there were 19,539 licensed drivers in San Juan County. Of these, there were 9,925 females and 9,614 males. The population in San Juan County was 63,162. The total number of crashes in 2001 was 882, yielding a crash rate of 14 per thousand people (The total number of crashes 882 divided by the population 63,162 multiplied by 1,000). The corresponding rate for the state was 27 per thousand people.

General Crash Information

Since 1992 the number of crashes has shown no consistent pattern. Fatal and injury crashes have also shown no consistent pattern since 1992. Belt usage (as a percentage) has increased from last year, while belt usage in crashes involving visible and incapacitating injuries has also increased.

Alcohol-related Crash Information

Information about alcohol-involved crashes is included in all sections of this report. Of the 414 people convicted of DWI in San Juan County in 2001, 43 percent were first-time DWI convictions (Number of first convictions 177 divided by the total number of people convicted 414 multiplied by 100). The corresponding percentage for the state was 57.

Crash Specifics

Crashes involving other vehicles were the most common class, accounting for 44 percent of all crashes. Crashes involving other vehicles, overturns, a fixed object, and an animal resulted in fatalities. Pickups were the vehicle type most often involved in crashes, accounting for 39 percent of all vehicles in crashes. Passengers accounted for 38 percent of vehicles involved in crashes. Together these two vehicle types comprised 76 percent of the vehicles involved in injury crashes. The three most common top contributing factors were excessive speed, alcohol involvement, and driver inattention. There were 10 fatal crashes in 2001. The most common top contributing factor for the fatal crashes was alcohol involvement.

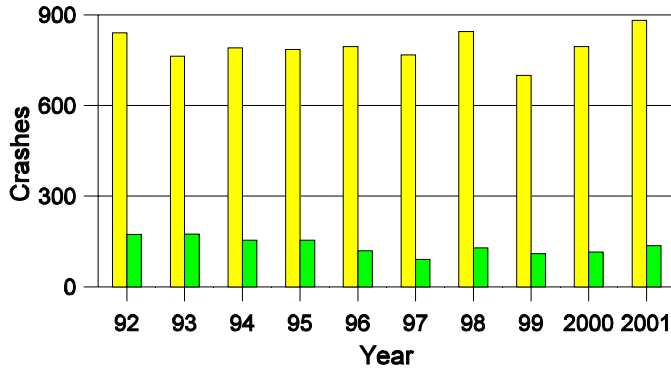
People in Crashes

Overall, males were 65 percent of drivers in crashes, although they account for only 49 percent of licensed drivers in San Juan County. All of the pedestrians involved in crashes were 13 years or older. In 2001, one 'teenager' and three young adults were killed in crashes in San Juan County. Statewide 19 percent of alcohol-involved drivers were under 21; in San Juan County 26 percent were under 21.

Note: The 1999 crash file contains 15% fewer crashes than the 1998 file. This may be due to problems implementing the new system after the old system failed, or to under reporting. Care should be used in interpreting differences between 1999 and other years in this report.

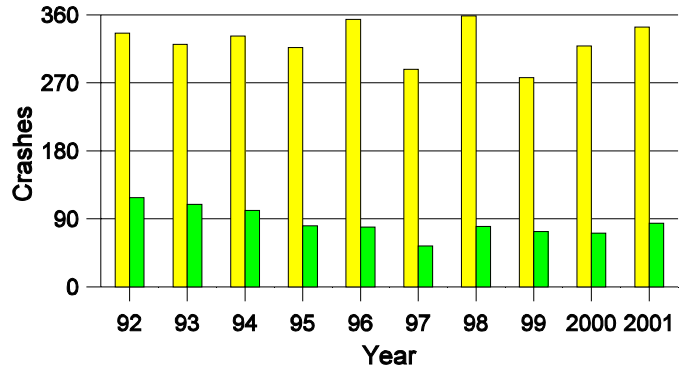
- Crashes in cities with a population greater than 4,000 are not included in this report.
- Location of arrest/conviction was determined by police agency/court location, not driver residence.
- Crashes and drivers were counted by the city of occurrence/residence.
- Population was counted according to the Census definition, using 2000 estimates.
- Young adults are people between the ages of 20 and 24.
- 'Teenagers' are people between the ages of 15 and 19.
- Tables only include variable values for which there are data.

**Crashes in San Juan County
by Alcohol Involvement**



All Crashes
 Alcohol-involved Crashes

**Fatal and Injury Crashes in San Juan County
by Alcohol Involvement**



All Fatal and Injury Crashes
 Alcohol-involved Fatal and Injury Crashes

Passenger Vehicle Seatbelt Usage and Injuries in San Juan County, 1999-2001

Injury Level	2001		2000		1999	
	Total	No Belt	Total	No Belt	Total	No Belt
Killed	13	9	4	1	8	5
Incapacitating injury	56	16	50	18	71	28
Visible injury	143	28	155	33	115	16
Complaint of injury	256	24	238	27	177	19
Unhurt	1,474	50	1,335	65	1,216	53
Total	1,942	127	1,782	144	1,587	121

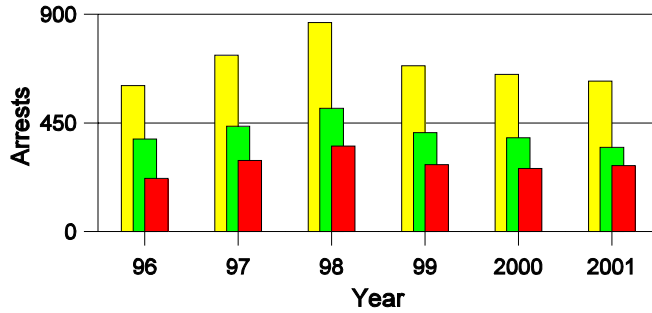
**Lifetime DWI Convictions for Drivers
Convicted of DWI Violations in San Juan County, 2001**

Convictions	Since 1997	Since 1971
1st	271	177
2nd	104	95
3rd	32	57
4th	7	36
5th	0	18
6th	0	9
7th	0	9
8th	0	6
9th	0	5
10 or more	0	2
Total	414	414

Convictions are counts of people convicted of DWI by 7/2002 for violations in 2001 in San Juan County. Convictions are not comparable to arrests.

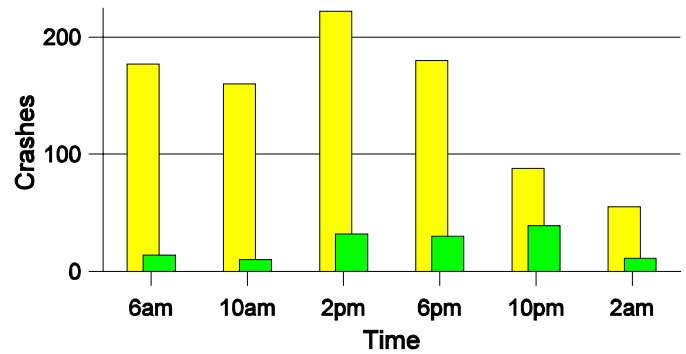
DWI Arrests in San Juan County

Showing First Arrests and Repeat Offenders



Crashes in San Juan County

by Hour and Alcohol Involvement



Crashes in San Juan County by Class, 2001

Class	Crashes				People		
	Total	% of Total	Fatal	% of Fatal	Injury	Killed	Injured
Other vehicle	392	44	5	50	170	8	297
Pedestrian	6	1	0	0	6	0	7
Fixed object	166	19	1	10	40	1	51
Veh. on other roadway	4	0	0	0	0	0	0
Parked vehicle	18	2	0	0	3	0	3
Overturn	162	18	3	30	95	4	127
Other non-collision	26	3	0	0	10	0	13
Pedalcyclist	1	0	0	0	1	0	1
Animal	100	11	1	10	9	1	14
Other object	7	1	0	0	0	0	0
Total	882	100	10	100	334	14	513

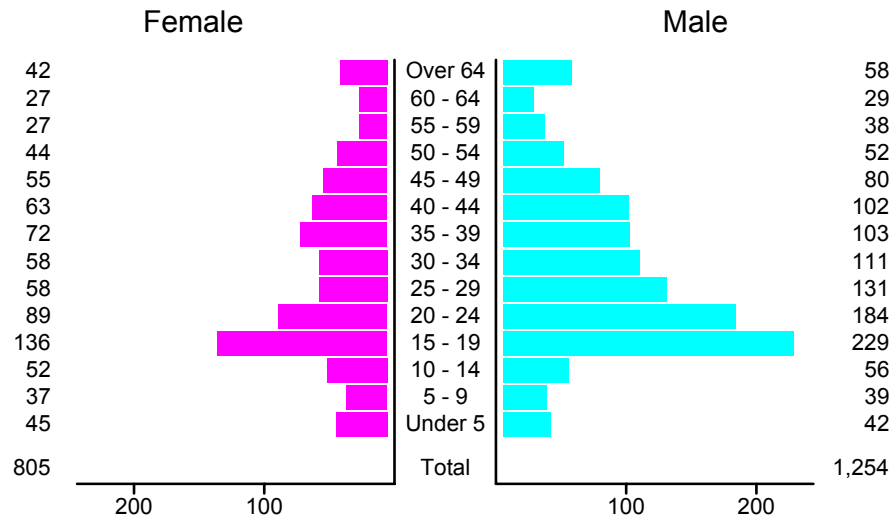
Crashes in San Juan County by Vehicle Type, 2001

Vehicle Type	Vehicles				People		
	Total	% of Total	Fatal	% of Fatal	Injury	Killed	Injured
Passenger car	514	38	6	40	212	9	233
Pickup	516	39	4	27	195	2	149
Semi	60	4	1	7	14	0	7
Bus	5	0	0	0	3	0	0
Motorcycle	18	1	1	7	15	1	18
Pedalcyclist	1	0	0	0	1	0	1
Pedestrian	6	0	0	0	6	0	6
Van/4 WD	186	14	3	20	82	2	95
Other	14	1	0	0	4	0	4
Unknown	20	1	0	0	4	0	0
Total	1,340	100	15	100	536	14	513

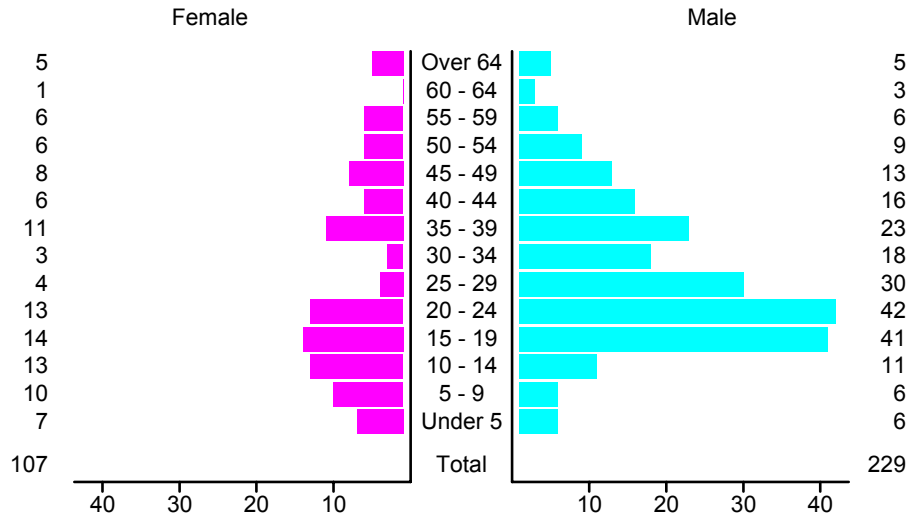
Crashes in San Juan County by Top Contributing Factor, 2001

Contributing Factor	Crashes				People		
	Total	% of Total	Fatal	% of Fatal	Injury	Killed	Injured
Alcohol involvement	136	15	6	60	78	10	135
Passing a red light	19	2	1	10	8	1	14
Failing to yield	74	8	0	0	36	0	64
Excessive speed	177	20	1	10	78	1	110
Driving left of center	20	2	1	10	7	1	12
Following too close	68	8	0	0	20	0	35
Improper turning	18	2	1	10	3	1	4
Improper overtaking	4	0	0	0	3	0	3
Improper backing	21	2	0	0	1	0	1
Inop. traffic control	1	0	0	0	0	0	0
Mechanical defect	21	2	0	0	5	0	5
Driver inattention	132	15	0	0	57	0	83
Improper driving	10	1	0	0	3	0	3
Other	181	21	0	0	35	0	44
Total	882	100	10	100	334	14	513

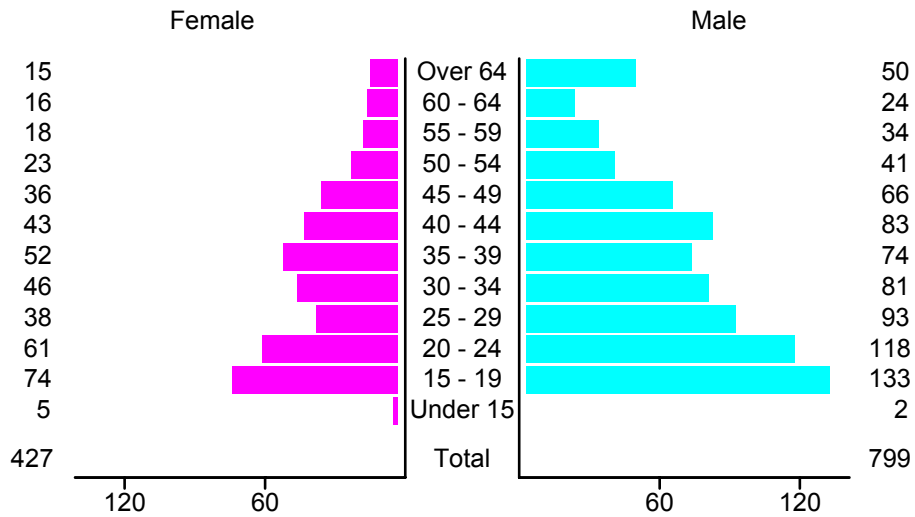
People in Crashes by Age and Sex in San Juan County, 2001



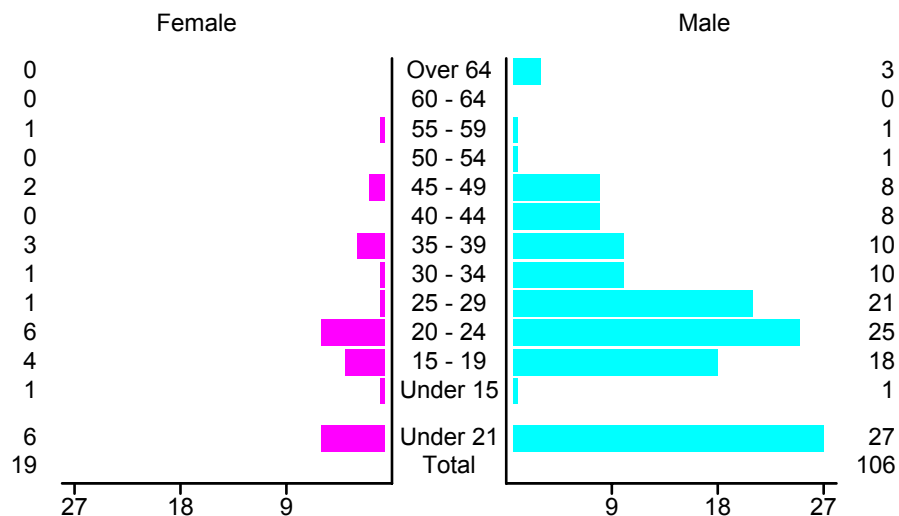
People in Alcohol-Involved Crashes in San Juan County, 2001 by Age and Sex



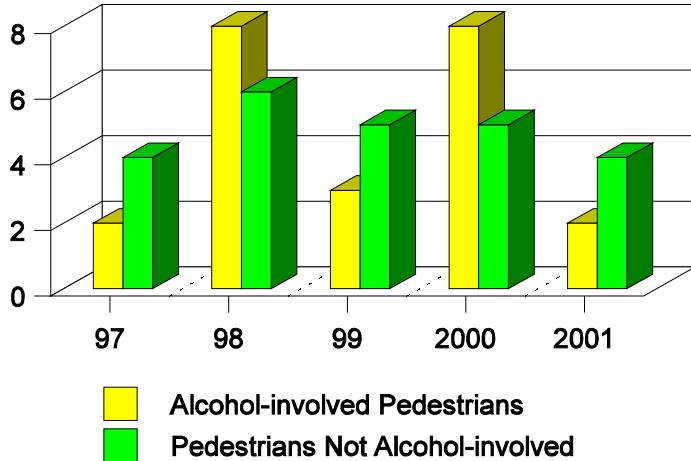
Drivers in Crashes by Age and Sex in San Juan County, 2001



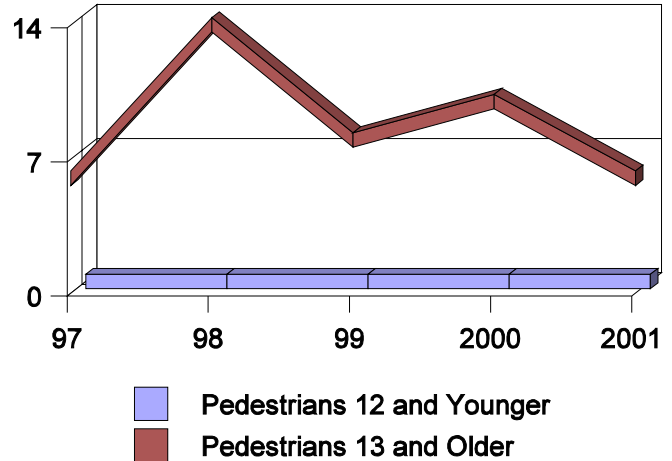
Alcohol-Involved Drivers in Crashes in San Juan County, 2001 by Age and Sex



**Pedestrian Crashes in San Juan County
by Pedestrian Alcohol-involvement, 1997-2001**



**Pedestrian Crashes in San Juan County
by Age Group, 1997-2001**



'Teenagers' and Young Adults in Crashes in San Juan County by Vehicle Type, 2001

Vehicle	'Teenage' Drivers			Young Adult Drivers		
	Total	Fatal	Injury	Total	Fatal	Injury
Passenger car	94	1	43	89	0	36
Pickup	80	0	28	64	1	25
Semi	1	0	0	2	0	0
Motorcycle	2	0	2	4	1	3
Pedestrian	0	0	0	0	0	0
Van/4 WD	30	0	22	16	1	5
Other	0	0	0	4	0	1
Total	207	1	95	179	3	70

'Teenagers' and Young Adults in Crashes in San Juan County, 1992-2001

Year	'Teenagers'				Young Adults			
	All Crashes		Alcohol Crashes		All Crashes		Alcohol Crashes	
	Killed	Injured	Killed	Injured	Killed	Injured	Killed	Injured
2001	1	112	1	27	3	66	2	15
2000	1	100	1	17	1	79	1	21
1999	1	98	0	18	0	60	0	18
1998	3	136	2	20	2	77	1	10
1997	1	105	1	20	2	60	2	19
1996	1	128	0	16	6	68	5	20
1995	3	115	2	14	0	67	0	27
1994	3	114	1	23	2	61	2	20
1993	1	100	1	30	0	60	0	36
1992	4	122	3	38	3	74	3	21