

Valencia County Report, 2001

Demographics

In 2001, there were 3,582 licensed drivers in Valencia County. Of these, there were 1,800 females and 1,782 males. The population in Valencia County in 2000 was 45,286. The total number of crashes in 2001 was 396, yielding a crash rate of 9 per thousand people (The total number of crashes 396 divided by the population 45,286 multiplied by 1,000). The corresponding rate for the state was 27 per thousand people.

General Crash Information

Since 1991 the number of crashes has shown no consistent pattern. Fatal and injury crashes have also shown no consistent pattern since 1991. Belt usage (as a percentage) declined from last year, particularly among people killed or sustaining visible injuries.

Alcohol-related Crash Information

Information about alcohol-involved crashes is included in all sections of this report. The number of alcohol-involved crashes has been gradually but steadily declining since 1995. Of the 97 people convicted of DWI in Valencia County in 2001, 45 percent were first-time DWI convictions (Number of first convictions 44 divided by the total number of people convicted 97 multiplied by 100). The corresponding percentage for the state was 57.

Crash Specifics

Crashes involving other vehicles were the most common class, accounting for 53 percent of all crashes. Crashes involving overturns and other vehicles were the most common crash classes which resulted in fatalities. Passenger cars were the vehicle type most often involved in crashes, accounting for 49 percent of all vehicles in crashes. Pickups accounted for 32 percent of vehicles involved in crashes. Together these two vehicle types comprised 84 percent of the vehicles involved in injury crashes. The two most common top contributing factors were driver inattention and excessive speed. There were 13 fatal crashes in 2001. The most common top contributing factor for the fatal crashes was driver inattention.

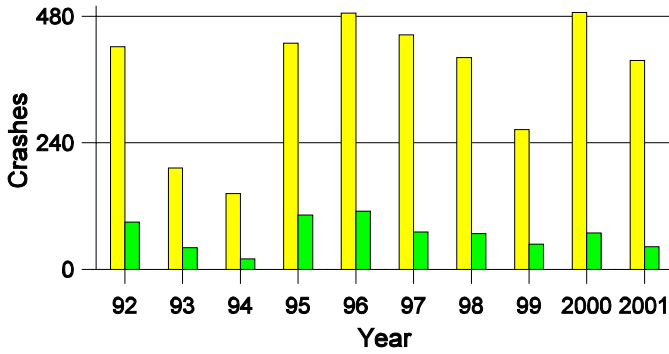
People in Crashes

Overall, males were 62 percent of drivers in crashes, although they account for only 50 percent of licensed drivers in Valencia County. There were four pedestrians involved in crashes. In 2001, one 'teenagers' and five young adults were killed in crashes in Valencia County. Statewide 19 percent of alcohol-involved drivers were under 21; in Valencia County 22 percent were under 21.

Note: The 1999 crash file contains 15% fewer crashes than the 1998 file. This may be due to problems implementing the new system after the old system failed, or to under reporting. Care should be used in interpreting differences between 1999 and other years in this report.

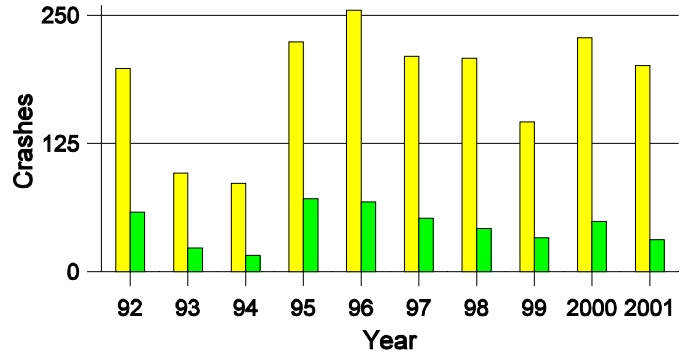
- Crashes in cities with a population greater than 4,000 are not included in this report.
- Location of arrest/conviction was determined by police agency/court location, not driver residence.
- Crashes and drivers were counted by the city of occurrence/residence.
- Population was counted according to the Census definition, using 2000 estimates.
- Young adults are people between the ages of 20 and 24.
'Teenagers' are people between the ages of 15 and 19.
- Tables only include variable values for which there are data.

**Crashes in Valencia County
by Alcohol Involvement**



All Crashes
 Alcohol-involved Crashes

**Fatal and Injury Crashes in Valencia County
by Alcohol Involvement**



All Fatal and Injury Crashes
 Alcohol-involved Fatal and Injury Crashes

Passenger Vehicle Seatbelt Usage and Injuries in Valencia County, 1999-2001

Injury Level	2001		2000		1999	
	Total	No Belt	Total	No Belt	Total	No Belt
Killed	11	8	5	3	13	7
Incapacitating injury	76	15	72	16	65	23
Visible injury	72	12	73	5	44	8
Complaint of injury	129	2	179	11	126	10
Unhurt	587	19	717	17	385	18
Total	875	56	1,046	52	633	66

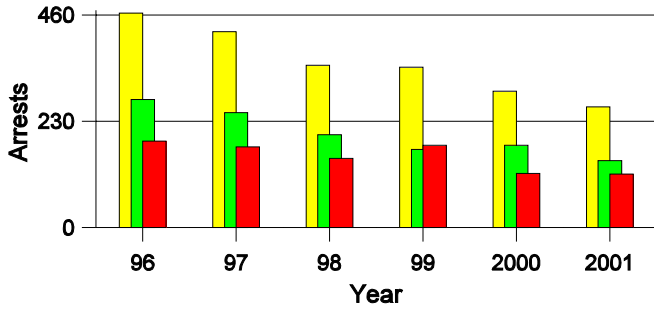
**Lifetime DWI Convictions for Drivers
Convicted of DWI Violations in Valencia County, 2001**

Convictions	Since 1997	Since 1971
1st	77	44
2nd	18	20
3rd	2	19
4th	0	7
5th	0	6
6th	0	1
7th	0	0
8th	0	0
9th	0	0
10 or more	0	0
Total	97	97

Convictions are counts of people convicted of DWI by 7/2002 for violations in 2001 in Valencia County. Convictions are not comparable to arrests.

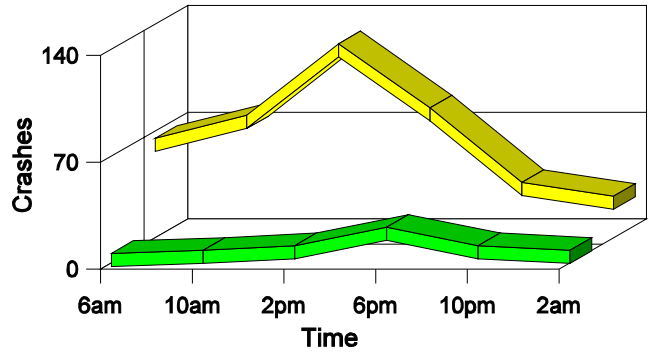
DWI Arrests in Valencia County

Showing First Arrests and Repeat Offenders



Crashes in Valencia County

by Hour and Alcohol Involvement



Crashes in Valencia County by Class, 2001

Class	Crashes					People	
	Total	% of Total	Fatal	% of Fatal	Injury	Killed	Injured
Other vehicle	211	53	3	23	103	3	205
Pedestrian	3	1	0	0	3	0	5
Fixed object	88	22	1	8	35	1	44
Veh. on other roadway	1	0	0	0	0	0	0
Parked vehicle	11	3	0	0	3	0	4
Overturn	68	17	8	62	41	8	70
Other non-collision	5	1	0	0	1	0	2
Pedalcyclist	1	0	0	0	1	0	1
Railroad train	1	0	1	8	0	1	0
Animal	4	1	0	0	1	0	1
Other object	3	1	0	0	0	0	0
Total	396	100	13	100	188	13	332

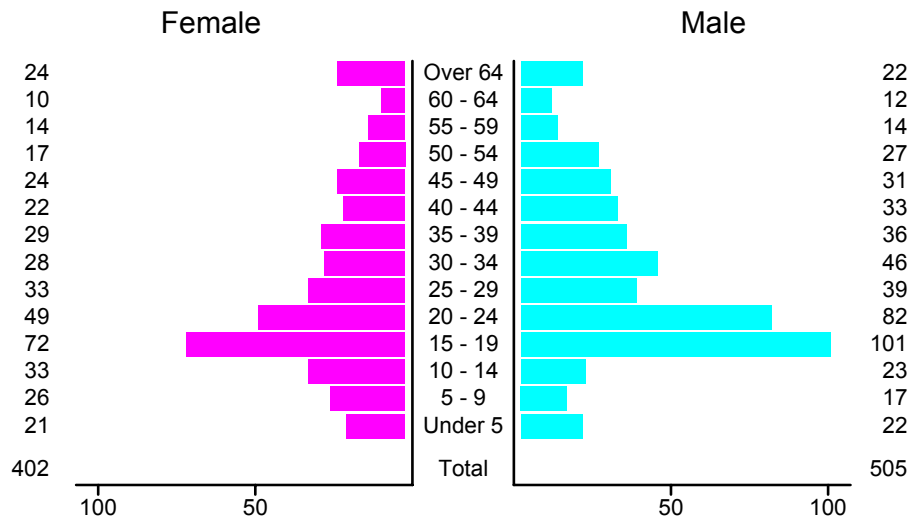
Crashes in Valencia County by Vehicle Type, 2001

Vehicle Type	Vehicles					People	
	Total	% of Total	Fatal	% of Fatal	Injury	Killed	Injured
Passenger car	324	49	6	35	164	5	181
Pickup	207	32	9	53	97	6	74
Semi	10	2	0	0	4	0	4
Bus	7	1	0	0	3	0	31
Motorcycle	6	1	0	0	5	0	6
Pedalcyclist	1	0	0	0	1	0	1
Pedestrian	4	1	0	0	4	0	4
Van/4 WD	71	11	1	6	30	1	30
Other	3	0	1	6	1	1	0
Unknown	24	4	0	0	3	0	1
Total	657	100	17	100	312	13	332

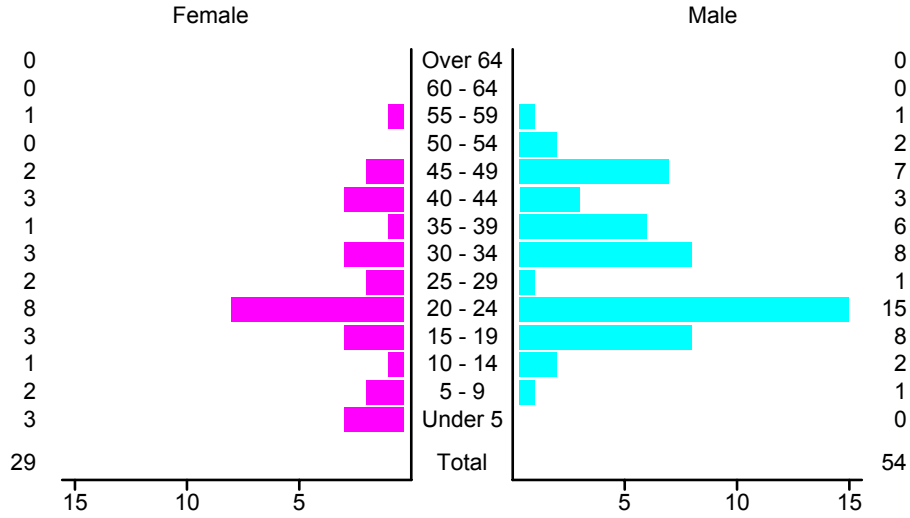
Crashes in Valencia County by Top Contributing Factor, 2001

Contributing Factor	Crashes					People	
	Total	% of Total	Fatal	% of Fatal	Injury	Killed	Injured
Alcohol involvement	42	11	2	15	28	2	51
Passing a red light	14	4	0	0	9	0	38
Failing to yield	44	11	1	8	25	1	39
Excessive speed	65	16	2	15	29	2	44
Driving left of center	20	5	1	8	7	1	11
Following too close	30	8	0	0	14	0	22
Improper turning	11	3	0	0	4	0	6
Improper overtaking	7	2	0	0	1	0	1
Improper backing	2	1	0	0	1	0	2
Mechanical defect	13	3	1	8	6	1	12
Driver inattention	104	26	4	31	48	4	84
Improper driving	13	3	0	0	3	0	3
Other	31	8	2	15	13	2	19
Total	396	100	13	100	188	13	332

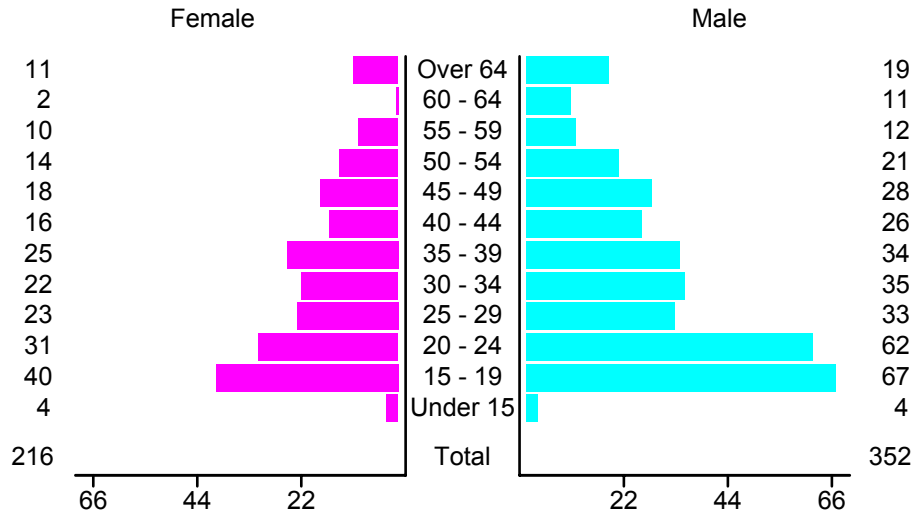
People in Crashes by Age and Sex in Valencia County, 2001



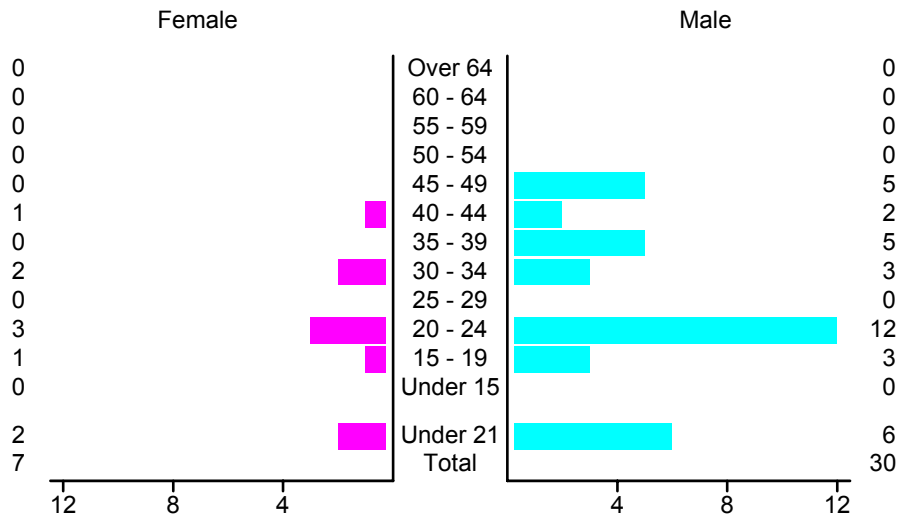
People in Alcohol-Involved Crashes in Valencia County, 2001 by Age and Sex



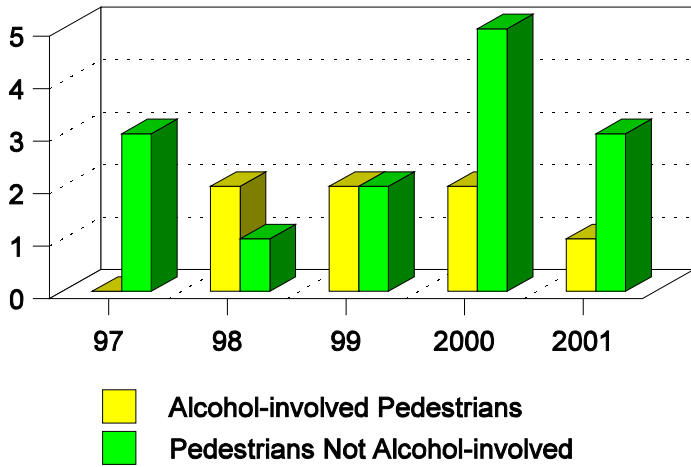
Drivers in Crashes by Age and Sex in Valencia County, 2001



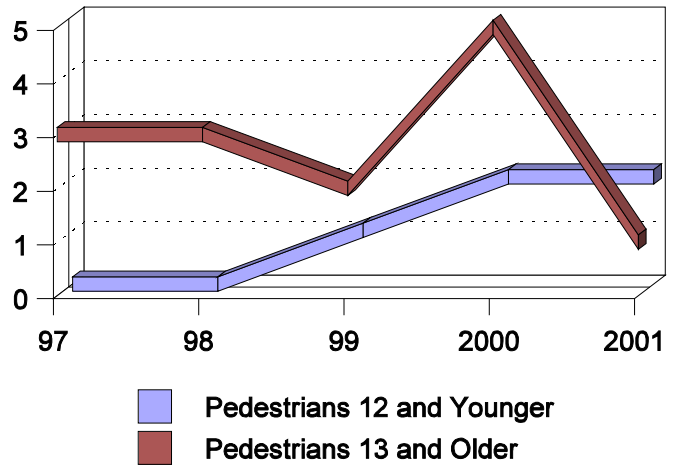
Alcohol-Involved Drivers in Crashes in Valencia County, 2001 by Age and Sex



**Pedestrian Crashes in Valencia County
by Pedestrian Alcohol-involvement, 1997-2001**



**Pedestrian Crashes in Valencia County
by Age Group, 1997-2001**



'Teenagers' and Young Adults in Crashes in Valencia County by Vehicle Type, 2001

Vehicle	'Teenage' Drivers			Young Adult Drivers		
	Total	Fatal	Injury	Total	Fatal	Injury
Passenger car	66	0	32	49	2	27
Pickup	31	2	10	35	4	17
Semi	0	0	0	1	0	0
Bus	0	0	0	1	0	1
Motorcycle	1	0	1	1	0	0
Van/4 WD	10	0	6	6	0	2
Total	108	2	49	93	6	47

'Teenagers' and Young Adults in Crashes in Valencia County, 1992-2001

Year	'Teenagers'				Young Adults			
	All Crashes		Alcohol Crashes		All Crashes		Alcohol Crashes	
	Killed	Injured	Killed	Injured	Killed	Injured	Killed	Injured
2001	1	46	1	6	5	49	1	9
2000	0	76	0	16	3	41	0	3
1999	2	42	2	2	1	31	0	12
1998	1	73	1	8	0	35	0	10
1997	0	84	0	17	0	42	0	20
1996	1	80	0	18	3	55	2	18
1995	1	61	1	15	3	46	2	2
1994	0	26	0	2	4	18	2	5
1993	4	33	1	4	2	20	0	18
1992	1	81	1	16	0	54	0	5