

Las Vegas Community Report, 2001

Demographics

In 2001, there were 12,355 licensed drivers in Las Vegas. Of these, there were 6,450 females and 5,905 males. The population of Las Vegas was 14,565. The total number of crashes in 2001 was 428, yielding a crash rate of 29 per thousand people (Total number of crashes 428 divided by total population 14,565 times 1,000). The corresponding rate for the state was 27 per thousand people.

General Crash Information

Since 1992 the number of crashes has shown no consistent pattern. Fatal and injury crashes have also shown no consistent pattern since 1992. Belt usage (as a percentage) decreased from last year, while belt usage in crashes involving visible and incapacitating injuries also decreased. There were no fatalities in the seven intersections with the most crashes in 2001. Of these intersections, four involve 7th Street.

Alcohol-related Crash Information

Information about alcohol-involved crashes is included in all sections of this report. Of the 66 people convicted of DWI in Las Vegas, 48 percent were first-time DWI convictions (Number of first convictions 32 divided by the total number of people convicted 66 times 100). The corresponding percent for the state is 57.

Crash Specifics

Crashes involving other vehicles were the most common class, accounting for 73 percent of all crashes. A crash involving an other vehicle resulted in a fatality. Passenger cars were the vehicle type most often involved in crashes, accounting for 53 percent of all vehicles in crashes. Pickups accounted for 27 percent of vehicles involved in crashes. Together these two vehicle types comprised 80 percent of the vehicles involved in injury crashes. The three most common top contributing factors were driver inattention, failing to yield and excessive speed. There was one fatal crash in 2001. The top contributing factor for the fatal crash was alcohol involvement.

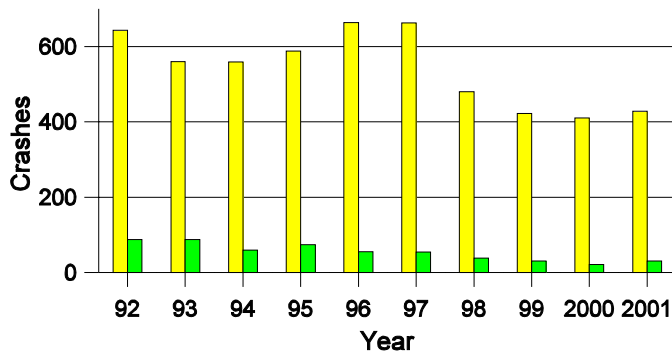
People in Crashes

Overall, males were 56 percent of drivers in crashes, although they account for only 48 percent of licensed drivers in Las Vegas. There were three pedestrians in crashes. In 2001, no 'teenagers' or young adults were killed in crashes in Las Vegas. Statewide 19 percent of alcohol-involved drivers were under 21; in Las Vegas 14 percent were under 21.

Note: The 1999 crash file contains 15% fewer crashes than the 1998 file. This may be due to problems implementing the new system after the old system failed, or to under reporting. Care should be used in interpreting differences between 1999 and other years in this report.

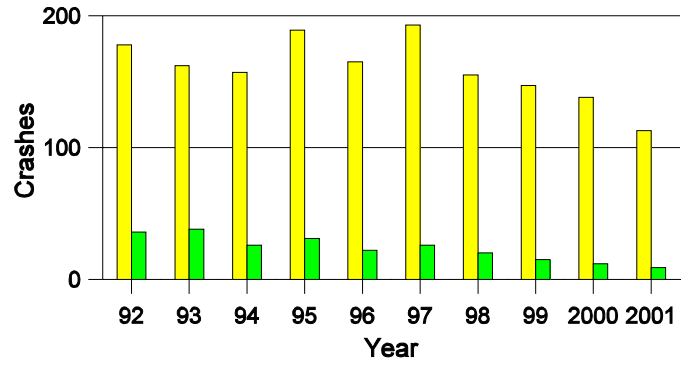
- Location of arrest/conviction was determined by police agency/court location, not driver residence.
- Crashes and drivers were counted by the city of occurrence/residence.
- Population was counted according to the Census definition. The most current city population data is 2000.
- Young adults are people between the ages of 20 and 24.
- 'Teenagers' are people between the ages of 15 and 19.
- Tables only include variable values for which there are data.

Crashes in Las Vegas by Alcohol Involvement



■ All Crashes
■ Alcohol-involved Crashes

Fatal and Injury Crashes in Las Vegas by Alcohol Involvement



■ All Fatal and Injury Crashes
■ Alcohol-involved Fatal and Injury Crashes

Passenger Vehicle Seatbelt Usage and Injuries in Las Vegas, 1999-2001

Injury Level	2001		2000		1999	
	Total	No Belt	Total	No Belt	Total	No Belt
Killed	1	0	0	0	0	0
Incapacitating injury	10	2	10	1	10	0
Visible injury	25	4	23	1	27	4
Complaint of injury	124	3	156	5	166	2
Unhurt	900	22	839	9	863	16
Total	1,060	31	1,028	16	1,066	22

The Seven Intersections in Las Vegas with the Most Crashes, 2001

Intersection	Crashes			People	
	Total	Fatal	Injury	Killed	Injured
6th St @ Mills Ave NM 329	6	0	3	0	3
7th St @ Legion Dr	8	0	4	0	6
7th St @ Mills Ave NM 329	14	0	8	0	11
7th St @ Mountain View Dr	7	0	2	0	5
7th St @ National Ave	7	0	4	0	4
Grand Ave (old US 85) @ Mills Ave NM 329	14	0	5	0	12
Grand Ave (old US 85) @ University Ave	11	0	2	0	5

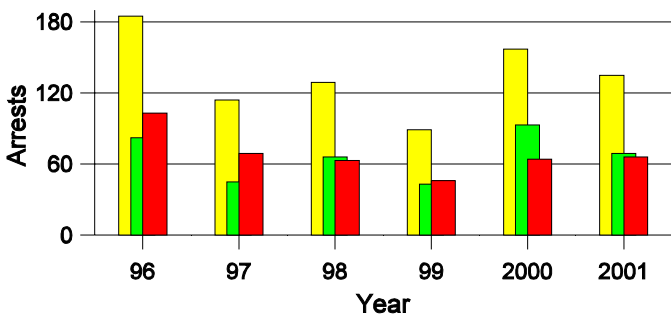
**Lifetime DWI Convictions for Drivers
Convicted of DWI Violations in Las Vegas, 2001**

Convictions	Since 1997	Since 1971
1st	47	32
2nd	13	16
3rd	5	9
4th	0	2
5th	1	3
6th	0	3
7th	0	0
8th	0	1
9th	0	0
10 or more	0	0
Total	66	66

Convictions are counts of people convicted of DWI by 7/2002 for violations in 2001 in Las Vegas.
Convictions are not comparable to arrests.

DWI Arrests in Las Vegas

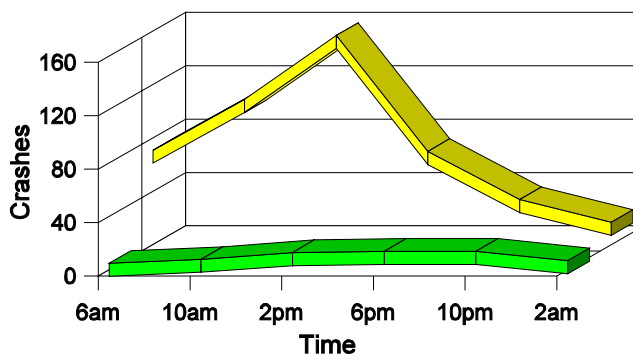
Showing First Arrests and Repeat Offenders



■ Total DWI Arrests
■ First DWI Arrests
■ Repeat DWI Arrests

Crashes in Las Vegas

by Hour and Alcohol Involvement



■ All Crashes
■ Alcohol-involved Crashes

Crashes in Las Vegas by Class, 2001

Class	Crashes				People		
	Total	% of Total	Fatal	% of Fatal	Injury	Killed	Injured
Other vehicle	314	73	1	100	93	1	155
Pedestrian	3	1	0	0	3	0	3
Fixed object	28	7	0	0	9	0	10
Veh. on other roadway	1	0	0	0	0	0	0
Parked vehicle	74	17	0	0	3	0	4
Overturn	4	1	0	0	2	0	4
Other non-collision	1	0	0	0	0	0	0
Pedalcyclist	3	1	0	0	2	0	2
Total	428	100	1	100	112	1	178

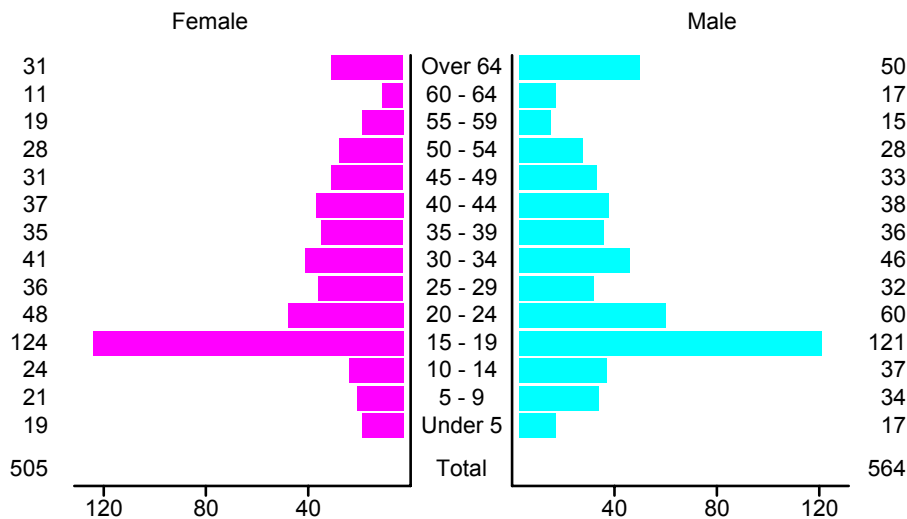
Crashes in Las Vegas by Vehicle Type, 2001

Vehicle Type	Vehicles					People	
	Total	% of Total	Fatal	% of Fatal	Injury	Killed	Injured
Passenger car	447	53	1	50	123	1	108
Pickup	232	27	0	0	55	0	37
Semi	11	1	0	0	2	0	0
Bus	4	0	0	0	1	0	1
Motorcycle	3	0	0	0	3	0	3
Pedalcyclist	3	0	0	0	2	0	1
Pedestrian	3	0	0	0	3	0	3
Van/4 WD	106	13	1	50	29	0	22
Other	4	0	0	0	0	0	0
Unknown	32	4	0	0	5	0	3
Total	845	100	2	100	223	1	178

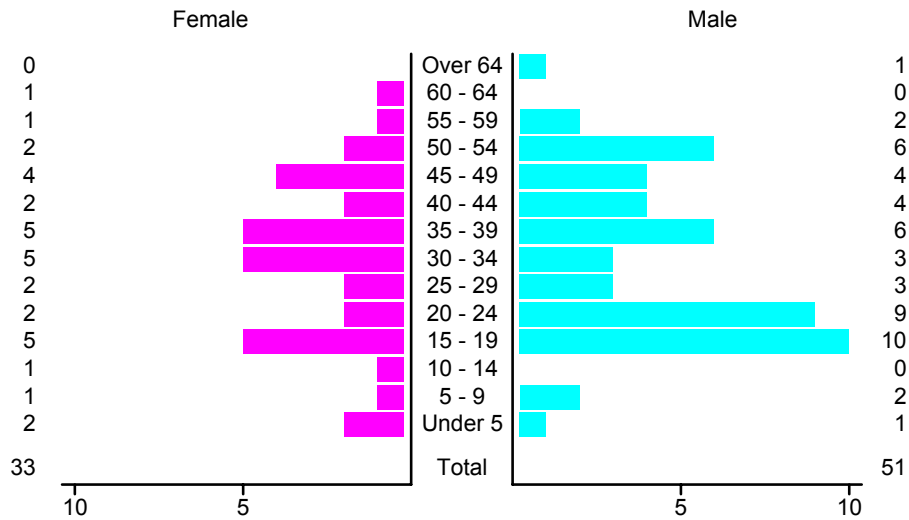
Crashes in Las Vegas by Top Contributing Factor, 2001

Contributing Factor	Crashes					People	
	Total	% of Total	Fatal	% of Fatal	Injury	Killed	Injured
Alcohol involvement	31	7	1	100	8	1	22
Passing a red light	20	5	0	0	7	0	13
Failing to yield	81	19	0	0	22	0	37
Excessive speed	41	10	0	0	12	0	18
Driving left of center	10	2	0	0	1	0	2
Following too close	31	7	0	0	14	0	21
Improper turning	11	3	0	0	4	0	8
Improper overtaking	5	1	0	0	1	0	5
Improper backing	23	5	0	0	0	0	0
Mechanical defect	7	2	0	0	3	0	3
Driver inattention	136	32	0	0	29	0	36
Improper driving	3	1	0	0	1	0	1
Other	29	7	0	0	10	0	12
Total	428	100	1	100	112	1	178

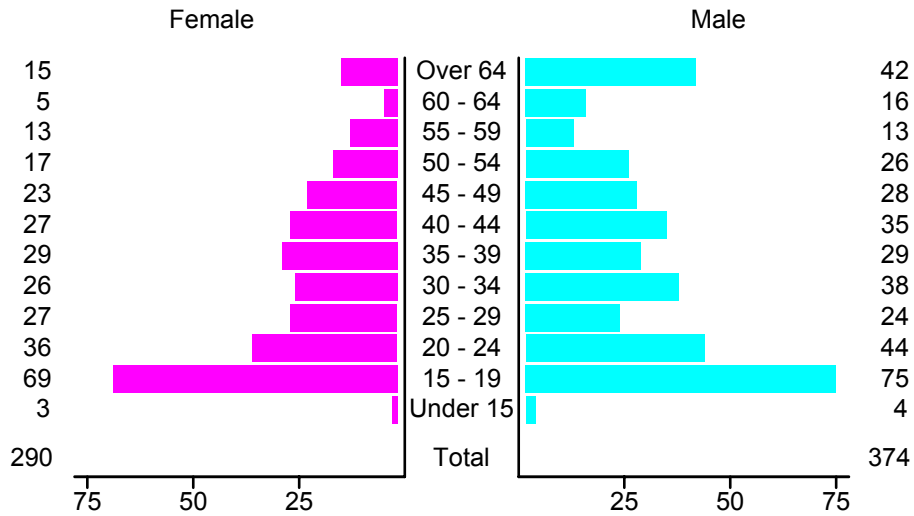
People in Crashes by Age and Sex in Las Vegas, 2001



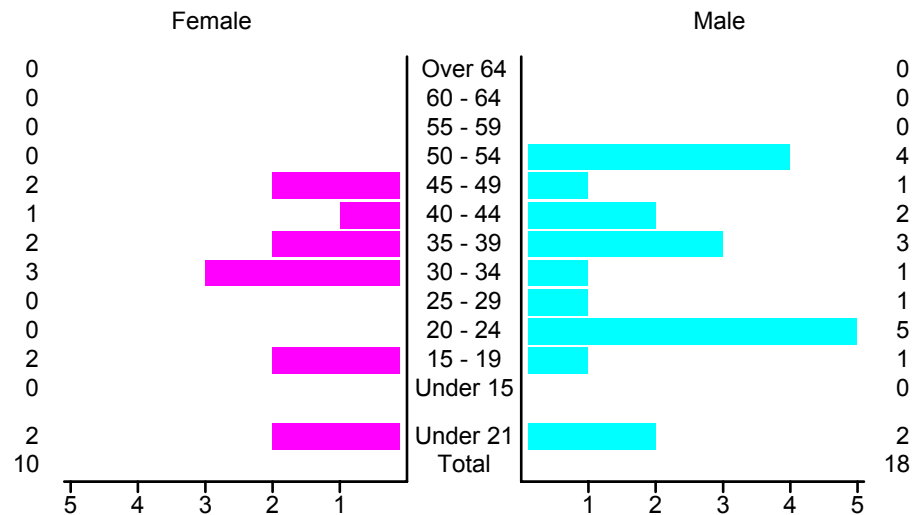
People in Alcohol-Involved Crashes in Las Vegas, 2001 by Age and Sex



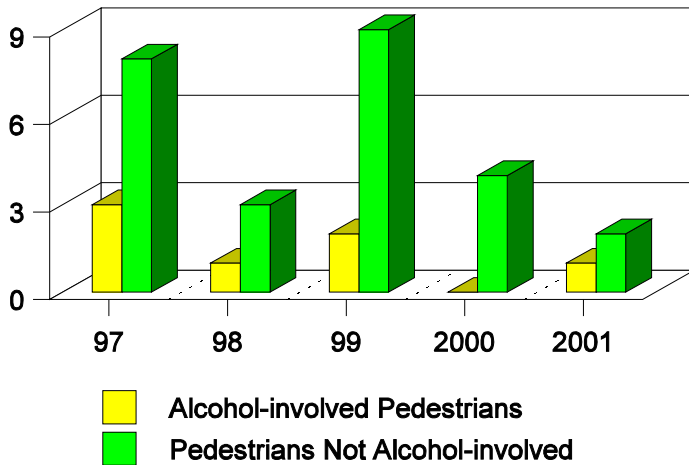
Drivers in Crashes by Age and Sex in Las Vegas, 2001



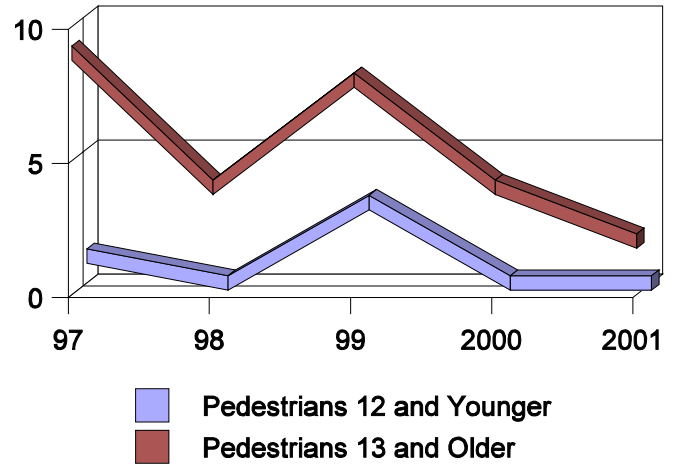
Alcohol-Involved Drivers in Crashes in Las Vegas, 2001 by Age and Sex



**Pedestrian in Crashes in Las Vegas
by Pedestrian Alcohol-involvement, 1997-2001**



**Pedestrian in Crashes in Las Vegas
by Age Group, 1997-2001**



'Teenagers' and Young Adults in Crashes in Las Vegas by Vehicle Type, 2001

Vehicle	'Teenage' Drivers			Young Adult Drivers		
	Total	Fatal	Injury	Total	Fatal	Injury
Passenger car	101	0	30	53	0	14
Pickup	25	0	8	19	0	3
Motorcycle	1	0	1	0	0	0
Van/4 WD	17	1	5	6	0	3
Unknown	1	0	1	3	0	2
Total	145	1	45	81	0	22

'Teenagers' and Young Adults Killed and Injured in Crashes by Year in Las Vegas, 1992-2001

Year	'Teenagers'				Young Adults			
	All Crashes		Alcohol Crashes		All Crashes		Alcohol Crashes	
	Killed	Injured	Killed	Injured	Killed	Injured	Killed	Injured
2001	0	37	0	3	0	19	0	2
2000	0	56	0	5	0	14	0	1
1999	0	54	0	2	0	20	0	4
1998	0	42	0	4	2	32	2	8
1997	0	51	0	8	0	50	0	10
1996	0	52	0	4	0	39	0	15
1995	0	45	0	5	0	44	0	8
1994	0	35	0	3	0	33	0	9
1993	0	29	0	1	0	27	0	6
1992	0	45	0	10	0	42	0	11