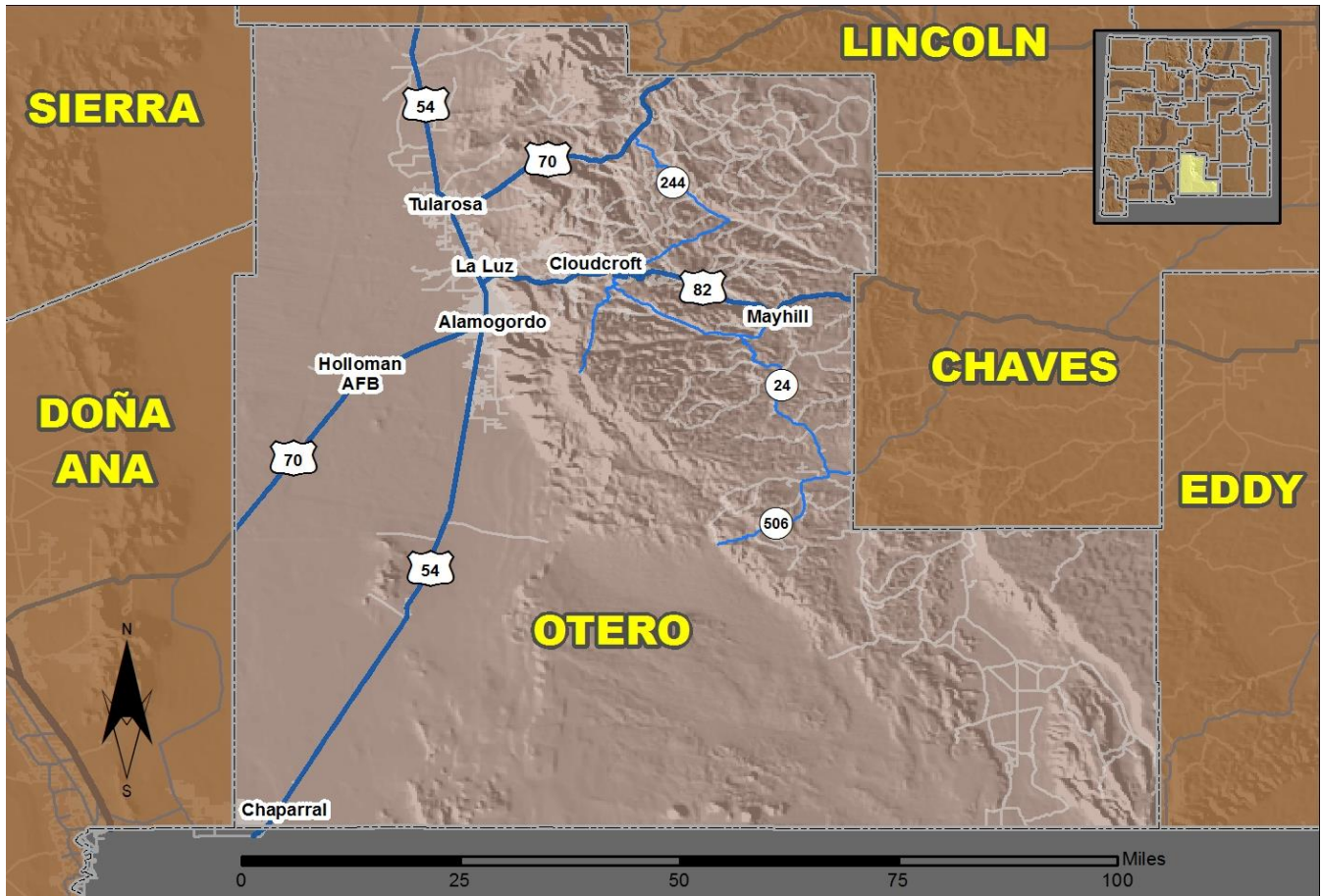


2017 Community Report

Alamogordo



Produced for the New Mexico Department of Transportation,
Traffic Safety Division, Traffic Records Bureau,
Under Contract 6093 by the University of New Mexico,
Geospatial and Population Studies, Traffic Research Unit

Distributed in compliance with New Mexico Statute 66-7-214
as a reference source regarding New Mexico traffic crashes

For the purposes of this report, data are compiled by the University of New Mexico, Geospatial and Population Studies, Traffic Research Unit (TRU), on behalf of the New Mexico Department of Transportation (NMDOT). Data in this report may differ from that in other data sources, such as the Federal Fatality Analysis Reporting System (FARS), due to the timing of publications and rules for how data are compiled and maintained in Federal vs. State databases. If you have questions regarding this report, please contact the Traffic Safety Division at 505-827-0427.

<http://tru.unm.edu/Crash-Reports/Community-Reports/>

Definitions

Aggravated DWI – A driver arrested for 1) driving with a BAC of 0.16 or higher, 2) driving under the influence of alcohol or drugs and causing bodily injury to a human being as a result, or 3) driving under the influence of alcohol or drugs and refusing to submit to a BAC test at the time of arrest for DWI.

Alcohol-involved Crash – A crash for which the Uniform Crash Report indicated that 1) a DWI citation was issued, 2) alcohol was a contributing factor, or 3) a person in control of a vehicle (including a pedestrian or pedalcyclist) was suspected of being under the influence of alcohol.

Alcohol-involved Driver – A person in control of a vehicle who was cited for DWI or indicated on the Uniform Crash Report as being either suspected or determined by testing to be under the influence of alcohol. There can be multiple alcohol-involved drivers in a single alcohol-involved crash.

Crash – A reported incident on a public roadway involving one or more motor vehicles that resulted in death, personal injury, or at least \$500 in property damage. Crashes on private property (such as a parking lot) are not included.

DWI Arrest (Citation) – In this report, a DWI arrest (a.k.a. a DWI citation) is a driver arrested for either DWI or aggravated DWI. New Mexico’s legal limit for presumption of driving while intoxicated (DWI) is 0.08 for non-commercial drivers older than 21 years of age, 0.04 for commercial vehicle drivers, and 0.02 for drivers younger than 21 years of age.

DWI Conviction – A driver convicted of driving under the intoxicating influence of alcohol, narcotics, or pathogenic drugs, including aggravated DWI.

Fatal Crash – A crash in which at least one person was killed. More than one person can be killed in a single fatal crash.

Fatalities – The number of people killed in a crash. The terms “killed” and “deaths” are synonymous with “fatalities.” A fatality is crash-related if it occurs at the time of the crash or if the person(s) involved in the crash dies within 30 days.

Injury Crash – A reported crash in which at least one person was injured. Injury crashes involve at least one suspected serious injury (Class A), suspected minor injury (Class B), or possible injury (Class C). Fatal crashes are not included.

Missing Data – An indication that the applicable field on the UCR form was left blank or contained an invalid code. Starting with crashes that occurred in 2012, improvements in the identification of missing data in the NMDOT crash database led to an increase in the reported amount of missing data.

Pedalcyclist – A person riding a mechanism of transport that is powered solely by pedals (a.k.a. bicyclist).

Pedestrian – A person on foot, walking, running, jogging, hiking, sitting or lying down who is involved in a motor vehicle traffic crash.

Sources

Crash Data – New Mexico Department of Transportation, Traffic Safety Division, Traffic Records Bureau, Traffic Crash Database, as of the report date below. Crash data are compiled using NMDOT Uniform Crash Reports (UCR), submitted by law enforcement agencies in the state, for any incident on a public roadway involving one or more motor vehicles that resulted in death, injury, or at least \$500 in property damage. These reports are processed by the NMDOT Traffic Records Bureau and analyzed by the University of New Mexico, Geospatial and Population Studies, Traffic Research Unit (TRU).

DWI Citation Tracking System (CTS) – New Mexico Taxation and Revenue Department (NM TRD), Motor Vehicle Division (MVD), DWI Citation Tracking System (CTS), as of February 2019. Repeat offenders are identified by the combination of account key, arrest date, and citation number. County data are based upon the county where the arrest took place. City data are based upon the city where the offender resides.

Urban Areas – New Mexico Department of Transportation, Asset Management and Planning, 2010 U.S. Census Urbanized Area Boundaries, NMDOT-Adjusted, and U.S. Census Urban Clusters, August 21, 2013. In crashes before 2013, “urban” was defined as a town or city with a population of at least 2,500 people.

**Table 1: Total Crashes and Alcohol-involved Crashes by
Crash Severity in Alamogordo, 2008-2017**

Year	Total Crashes				Alcohol-involved Crashes			
	Fatal	Injury	Property Damage Only	Total	Fatal	Injury	Property Damage Only	Total
2008	0	197	480	677	0	7	17	24
2009	1	217	484	702	0	7	16	23
2010	1	216	465	682	1	13	14	28
2011	3	214	541	758	1	15	18	34
2012	4	185	464	653	2	11	16	29
2013	2	192	489	683	0	14	19	33
2014	4	155	420	579	2	7	15	24
2015	4	175	457	636	0	12	12	24
2016	0	201	408	609	0	10	16	26
2017	2	214	427	643	1	9	12	22

**Figure 1: Alcohol-involved Fatal and Injury Crashes Compared with
Non-alcohol-involved Fatal and Injury Crashes in Alamogordo, 2008-2017**

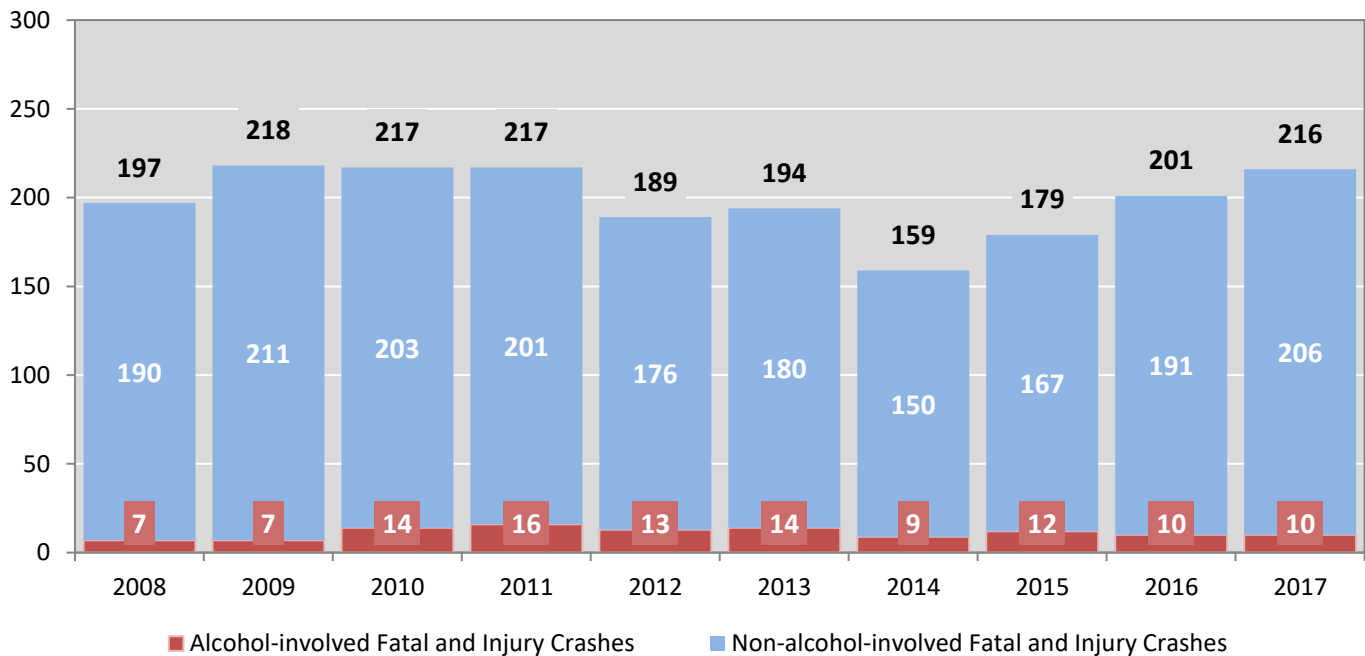


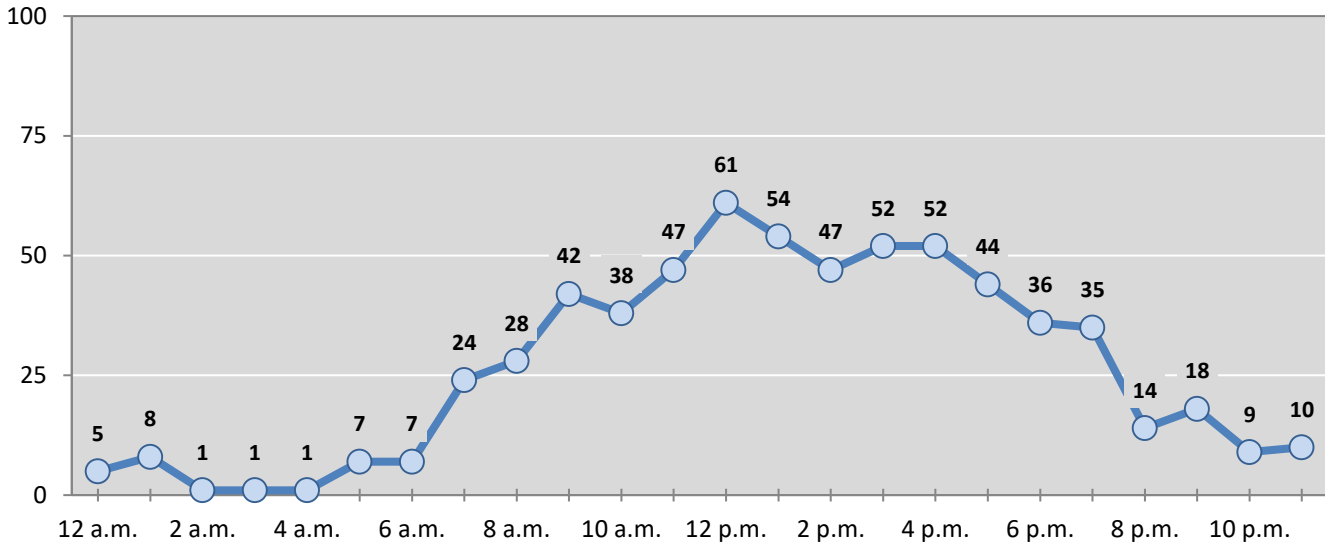
Table 2: Crashes by Month in Alamogordo, 2013-2017

Month	Crashes					5-Year Average
	2013	2014	2015	2016	2017	
January	52	48	54	48	42	49
February	53	45	54	56	52	52
March	63	63	51	68	61	61
April	54	68	50	55	50	55
May	69	58	59	52	64	60
June	65	47	62	52	52	56
July	49	41	58	46	53	49
August	52	47	50	34	55	48
September	45	57	63	55	55	55
October	63	33	58	41	55	50
November	57	14	38	39	51	40
December	61	58	39	63	53	55
Total Crashes	683	579	636	609	643	630

Table 3: Alcohol-involved Crashes by Month in Alamogordo, 2013-2017

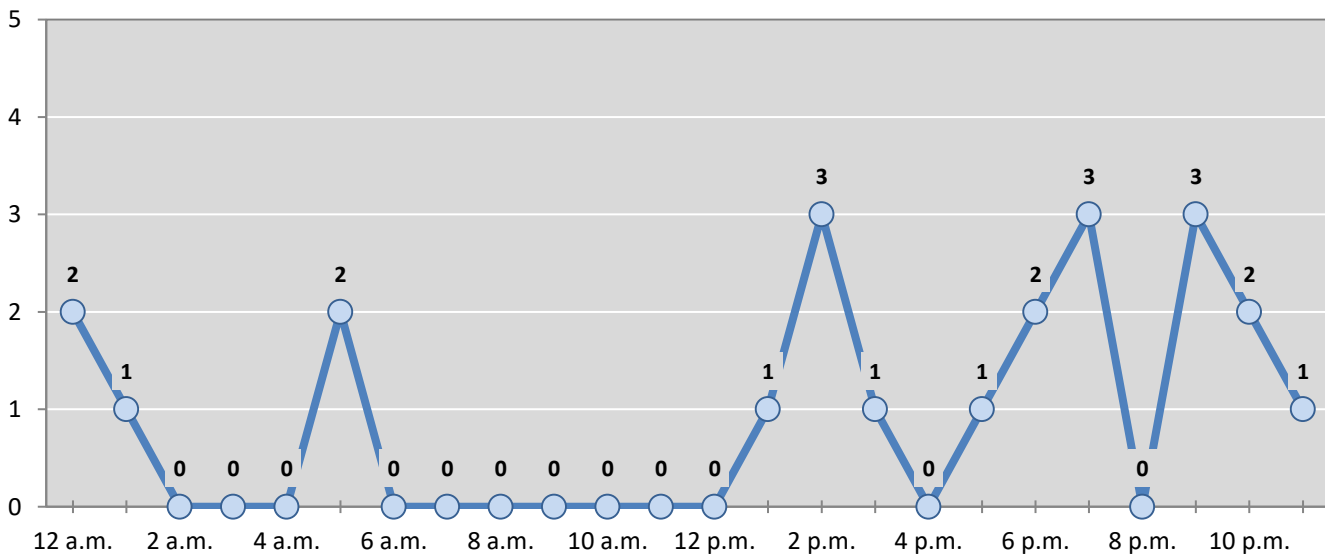
Month	Alcohol-involved Crashes					5-Year Average
	2013	2014	2015	2016	2017	
January	3	2	0	3	1	2
February	1	2	2	2	3	2
March	4	2	1	0	2	2
April	3	1	1	3	2	2
May	3	3	3	4	5	4
June	2	1	4	5	0	2
July	3	2	3	2	1	2
August	2	0	4	0	1	1
September	1	3	1	1	1	1
October	2	1	1	1	2	1
November	3	2	2	3	2	2
December	6	5	2	2	2	3
Total Crashes	33	24	24	26	22	26

Figure 2: Crashes by Hour in Alamogordo, 2017



* In 2017, Alamogordo had 2 crashes for which hour data were missing.

Figure 3: Alcohol-involved Crashes by Hour in Alamogordo, 2017



* In 2017, Alamogordo had 0 alcohol-involved crashes for which hour data were missing.

Table 4: Alcohol-involved Crashes by Day of Week in Alamogordo, 2013-2017

Day of Week	Alcohol-involved Crashes					5-Year Average
	2013	2014	2015	2016	2017	
Sunday	5	4	3	9	2	5
Monday	3	5	1	5	2	3
Tuesday	3	3	1	0	6	3
Wednesday	3	2	2	1	5	3
Thursday	5	1	4	5	2	3
Friday	3	5	6	2	3	4
Saturday	11	4	7	4	2	6
Total Crashes	33	24	24	26	22	26

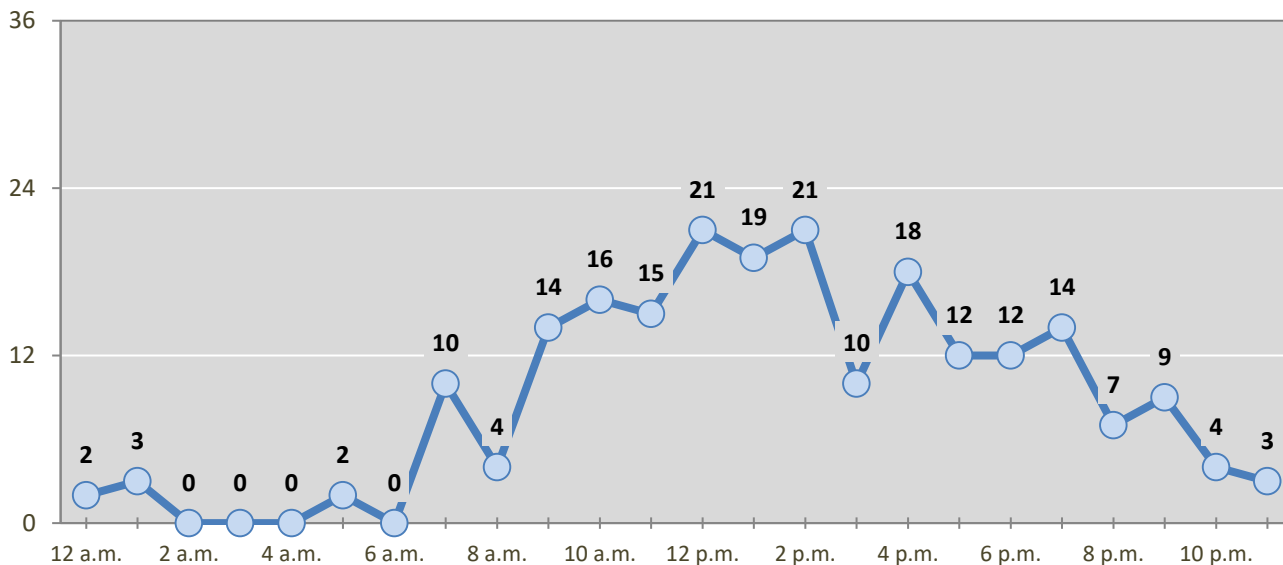
Table 5: Fatal and Injury Crashes by Day of Week in Alamogordo, 2013-2017

Day of Week	Fatal and Injury Crashes					5-Year Average
	2013	2014	2015	2016	2017	
Sunday	12	15	16	19	12	15
Monday	34	25	21	40	38	32
Tuesday	27	26	27	25	34	28
Wednesday	24	28	35	35	32	31
Thursday	28	18	31	28	29	27
Friday	40	26	34	30	43	35
Saturday	29	21	15	24	28	23
Total Crashes	194	159	179	201	216	190

Table 6: Pedestrian and Pedalcyclist Crashes by Day of Week in Alamogordo, 2013-2017

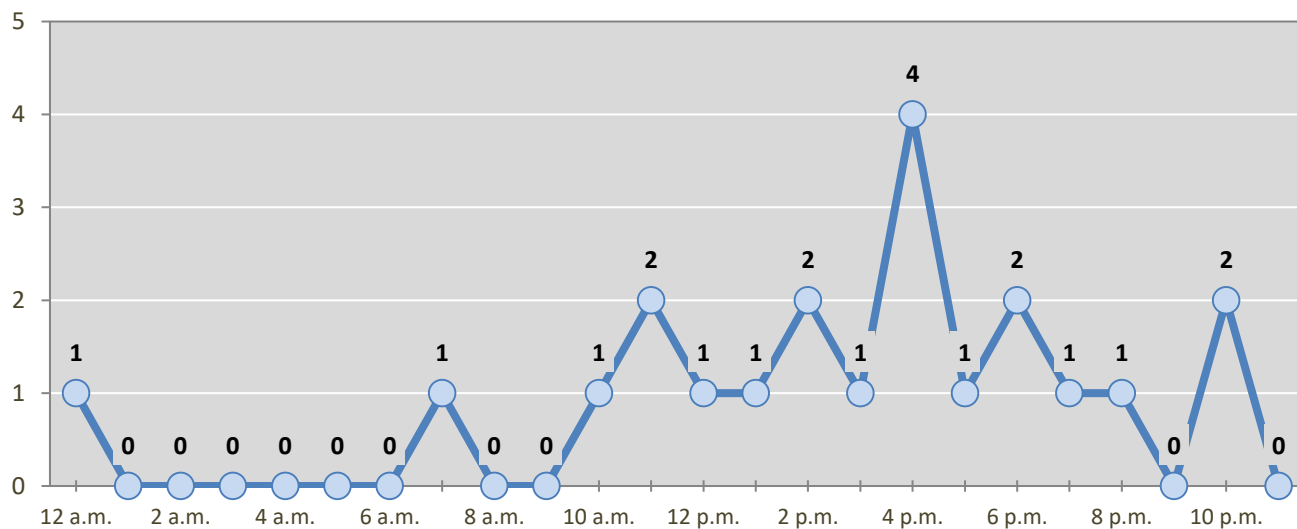
Day of Week	Pedestrian and Pedalcyclist Crashes					5-Year Average
	2013	2014	2015	2016	2017	
Sunday	0	2	1	0	0	1
Monday	1	3	1	4	6	3
Tuesday	2	2	6	0	4	3
Wednesday	1	4	2	1	1	2
Thursday	7	1	1	3	5	3
Friday	1	1	2	3	3	2
Saturday	2	1	1	2	2	2
Total Crashes	14	14	14	13	21	15

Figure 4: Fatal and Injury Crashes by Hour in Alamogordo, 2017



* In 2017, Alamogordo had 0 crashes for which hour data were missing.

Figure 5: Pedestrian and Pedalcyclist Crashes by Hour in Alamogordo, 2017



* In 2017, Alamogordo had 0 crashes for which hour data were missing.

Table 7: Severity of Injuries to People in Crashes by Rural and Urban Location in Alamogordo, 2017

Urban and Rural Locations by Alcohol-involvement	People in Crashes by Severity of Injuries					Total People
	Fatalities (Class K)	Suspected Serious Injuries (Class A)	Suspected Minor Injuries (Class B)	Possible Injuries (Class C)	No Apparent Injuries (Class O)	
People in Alcohol-involved Crashes	1	1	5	4	35	46
Urban	0	1	5	4	35	45
Rural Non-Interstate	1	0	0	0	0	1
Rural Interstate	0	0	0	0	0	0
People in Crashes	2	7	71	219	1,409	1,708
Urban	1	7	66	209	1,377	1,660
Rural Non-Interstate	1	0	5	10	32	48
Rural Interstate	0	0	0	0	0	0
Percent in Alcohol-involved Crashes	50%	14%	7%	2%	2%	3%

Table 8: Total Crashes by Roadway System and Crash Severity in Alamogordo, 2013-2017

Crash Severity by System	Crashes by Year					5-Year Average
	2013	2014	2015	2016	2017	
Total Rural Interstate	0	0	0	0	0	0
Fatal Crash	0	0	0	0	0	0
Injury Crash	0	0	0	0	0	0
Property Damage Only Crash	0	0	0	0	0	0
Total Rural Non-Interstate	34	23	22	15	22	23
Fatal Crash	2	2	1	0	1	1
Injury Crash	11	8	5	8	12	9
Property Damage Only Crash	21	13	16	7	9	13
Total Urban	649	556	614	594	621	607
Fatal Crash	0	2	3	0	1	1
Injury Crash	181	147	170	193	202	179
Property Damage Only Crash	468	407	441	401	418	427

Table 9: Total Crashes by Crash Classification in Alamogordo, 2013-2017

Crash Classification	Total Crashes by Year					5-Year Average
	2013	2014	2015	2016	2017	
Animal	5	5	1	4	5	4
Fixed Object	66	50	61	65	49	58
Other (Non-Collision)	6	6	10	9	9	8
Other (Object)	15	9	11	7	12	11
Other Vehicle	481	378	454	411	468	438
Overturn/Rollover	7	10	2	16	8	9
Parked Vehicle	73	92	63	77	65	74
Pedalcyclist	7	7	7	5	10	7
Pedestrian	7	7	7	9	11	8
Railroad Train	2	1	0	0	0	1
Rollover	0	0	11	1	2	3
Vehicle on Other Road	6	9	8	4	4	6
Missing Data	8	5	1	1	0	3
Total Crashes	683	579	636	609	643	630

Table 10: Vehicles in Crashes by Vehicle Type in Alamogordo, 2013-2017

Vehicle Type ¹	Vehicles in Crashes by Vehicle Type					5-Year Average
	2013	2014	2015	2016	2017	
Bus	4	1	0	5	2	2
Motorcycle	29	24	27	36	28	29
Passenger	627	556	592	584	612	594
Pedalcyclist	7	7	7	5	10	7
Pedestrian	7	7	7	8	11	8
Pickup	289	219	265	220	264	251
Semi	11	14	13	13	19	14
Van/SUV/4WD	233	229	253	228	260	241
Other Vehicle	22	9	4	5	0	8
Missing Data	70	58	48	46	37	52
Total Vehicles	1,299	1,124	1,216	1,150	1,243	1,206

¹ Pedestrians and pedalcyclists are counted as non-motorized vehicles, when involved in a crash with a motor vehicle. See Page 17 for data on drivers of non-motorized vehicles in crashes (i.e. pedestrians and pedalcyclists).

Table 11: Motor Vehicle Drivers in Crashes by Vehicle Type and Age Group in Alamogordo, 2017

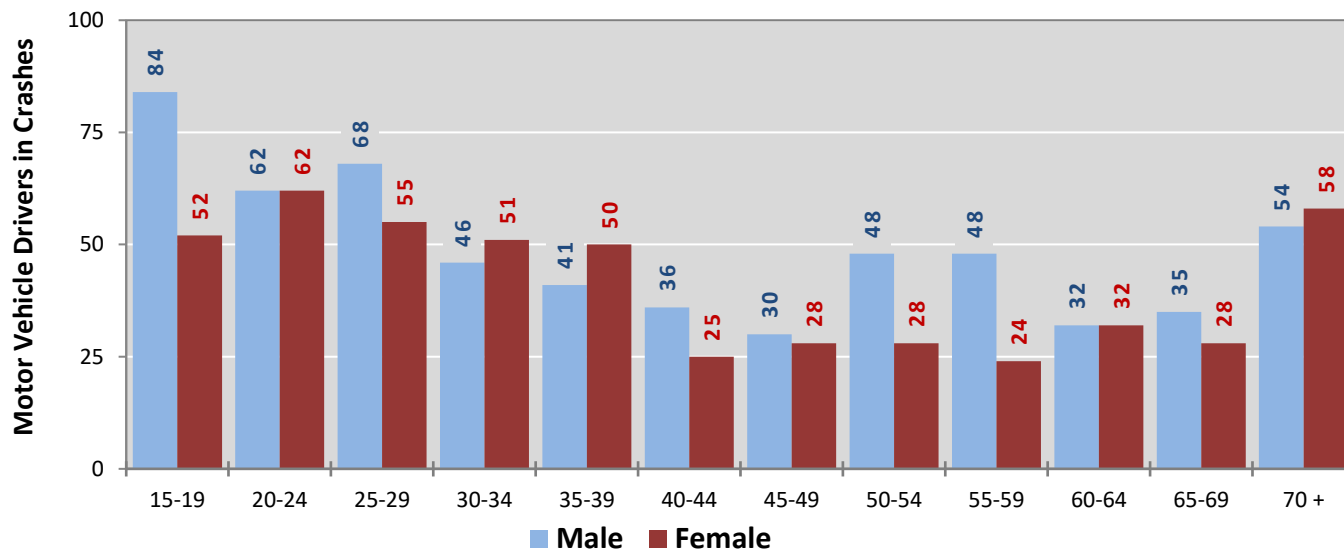
Age Groups	Motor Vehicle ¹ Drivers by Vehicle Type and Age Group								Total Drivers
	Bus	Motor-cycle	Passenger	Pickup	Semi	Van 4WD SUV	Other Vehicle	Missing Data	
15-19	0	5	83	19	0	29	0	0	136
20-24	0	2	82	21	0	19	0	0	124
25-29	0	5	68	19	1	30	0	0	123
30-34	0	5	39	19	3	31	0	0	97
35-39	0	1	45	17	2	26	0	0	91
40-44	0	0	21	21	1	18	0	0	61
45-49	1	1	30	16	0	10	0	0	58
50-54	0	1	36	26	2	11	0	0	76
55-59	0	3	24	21	3	20	0	1	72
60-64	0	1	30	10	3	20	0	0	64
65-69	0	2	29	21	0	11	0	1	64
70 +	1	1	64	21	0	25	0	0	112
Missing Data	0	1	61	33	4	10	0	35	144
Total Drivers	2	28	612	264	19	260	0	37	1,222

Table 12: Alcohol-involved Motor Vehicle Drivers in Crashes by Vehicle Type and Age Group in Alamogordo, 2017

Age Groups	Alcohol-involved Motor Vehicle ¹ Drivers by Vehicle Type and Age Group								Total Drivers
	Bus	Motor-cycle	Passenger	Pickup	Semi	Van 4WD SUV	Other Vehicle	Missing Data	
15-19	0	0	0	0	0	0	0	0	0
20-24	0	0	3	0	0	0	0	0	3
25-29	0	1	1	3	0	1	0	0	6
30-34	0	2	1	1	0	0	0	0	4
35-39	0	1	1	0	0	0	0	0	2
40-44	0	0	1	0	0	0	0	0	1
45-49	0	0	0	0	0	0	0	0	0
50-54	0	1	1	1	0	0	0	0	3
55-59	0	0	0	0	0	0	0	0	0
60-64	0	0	0	0	0	0	0	0	0
65-69	0	0	0	1	0	0	0	0	1
70 +	0	0	0	0	0	0	0	0	0
Missing Data	0	0	0	0	0	0	0	0	0
Total Drivers	0	5	8	6	0	1	0	0	20

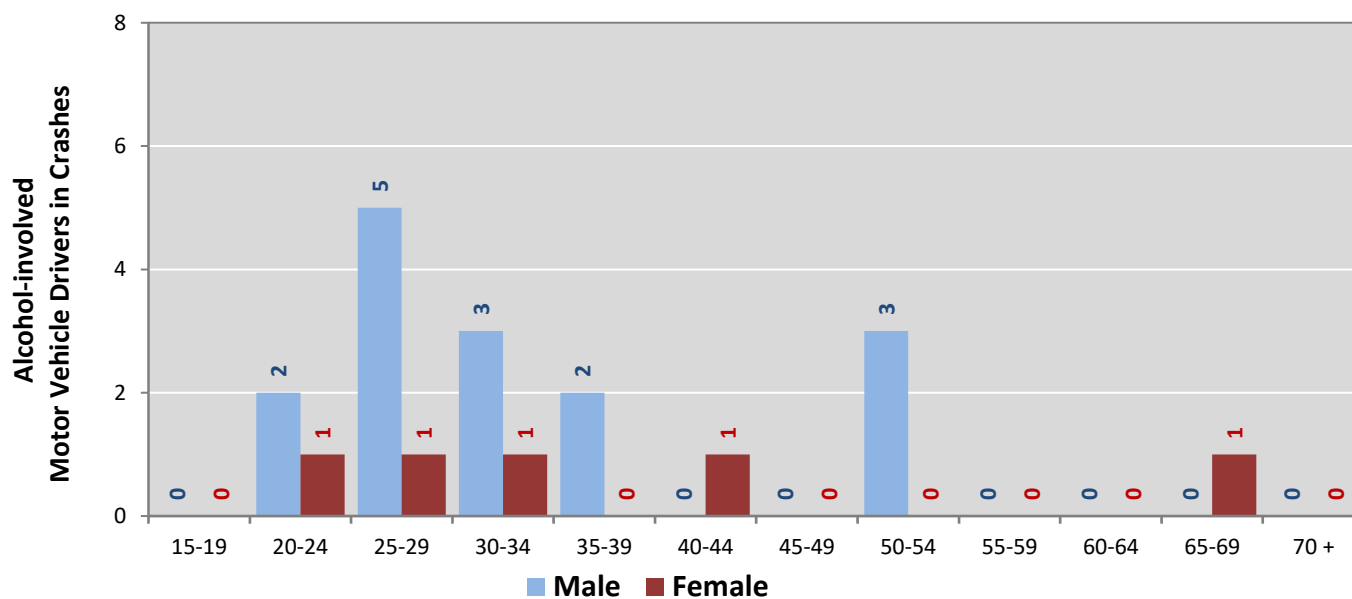
¹ See Page 17 for data on drivers of non-motorized vehicles in crashes (i.e. pedestrians and pedalcyclists).

Figure 6: Motor Vehicle Drivers in Crashes by Age Group and Sex in Alamogordo, 2017



* In 2017, Alamogordo had 145 drivers in crashes for which age or sex data were missing.

Figure 7: Alcohol-involved Motor Vehicle Drivers in Crashes by Age Group and Sex in Alamogordo, 2017



* In 2017, Alamogordo had 0 drivers in crashes for which age or sex data were missing.

**Table 13: Alcohol-involved Motor Vehicle Drivers Under 21
(Ages 15-20) in Crashes in Alamogordo, 2013-2017**

Age ¹	Year					5-Year Total
	2013	2014	2015	2016	2017	
15	0	0	0	0	0	0
16	0	0	0	1	0	1
17	0	1	2	1	0	4
18	1	1	0	0	0	2
19	2	0	1	0	0	3
20	1	0	0	0	1	2
Total Drivers	4	2	3	2	1	12

**Table 14: Motor Vehicle Drivers Under 21 (Ages 15-20) in Crashes
by Age, Sex and Alcohol-involvement in Alamogordo, 2017**

Age ¹	Total Drivers				Alcohol-involved Drivers			
	Sex		Total Drivers	Percent of Total	Sex		Total Drivers	Percent of Total
	Male	Female			Male	Female		
15	10	2	12	7%	0	0	0	0%
16	14	14	28	17%	0	0	0	0%
17	17	11	28	17%	0	0	0	0%
18	19	13	32	20%	0	0	0	0%
19	24	12	36	22%	0	0	0	0%
20	18	10	28	17%	1	0	1	100%
Total Drivers	102	62	164	100%	1	0	1	100%

¹ For analysis of drivers under age 21, when the driver age or sex are not identified on the crash report (typically hit-and-run drivers), the driver data are considered unreliable and are excluded from the analysis.

**Table 15: Frequency of Contributing Factors in Crashes
by Crash Severity in Alamogordo, 2017**

Contributing Factors	Frequency of Contributing Factor ¹ by Crash Severity			
	Frequency in Fatal Crashes	Frequency in Injury Crashes	Frequency in Property Damage Only Crashes	Frequency in All Crashes
Human	5	420	787	1,212
Driver Inattention	1	165	321	487
Failed to Yield Right of Way	0	67	96	163
Other Improper Driving	0	30	61	91
Following Too Closely	0	29	61	90
Made Improper Turn	0	27	51	78
Improper Backing	0	4	40	44
Passed Stop Sign	0	23	21	44
Disregarded Traffic Signal	0	22	19	41
Avoid No Contact - Vehicle	0	12	18	30
Excessive Speed	1	7	22	30
Alcohol Involved	1	9	12	22
Improper Lane Change	0	2	14	16
Improper Overtaking	0	1	13	14
Speed Too Fast for Conditions	0	6	8	14
Drove Left Of Center	0	2	11	13
Avoid No Contact - Other	0	1	8	9
Cell Phone	0	2	4	6
Pedestrian Error	1	3	1	5
High Speed Pursuit	0	2	2	4
Vehicle Skidded Before Brake	0	1	3	4
Drug Involved	1	1	1	3
Failed to Yield to Police Vehicle	0	2	0	2
Failed to Yield to Emergency Vehicle	0	1	0	1
Texting	0	1	0	1
Driverless Moving Vehicle	0	0	0	0
Vehicle	0	5	5	10
Inadequate Brakes	0	1	3	4
Other Mechanical Defect	0	3	1	4
Defective Tires	0	1	1	2
Defective Steering	0	0	0	0
Environment	0	4	0	4
Traffic Control Not Functioning	0	3	0	3
Road Defect	0	1	0	1
Low Visibility Due to Smoke	0	0	0	0
Other	0	195	376	571
None	0	180	360	540
Other - No Driver Error	0	15	16	31

¹ Multiple contributing factors may be reported for any vehicle in a crash.

Table 16: People in Crashes by Crash Classification and Severity of Injuries in Alamogordo, 2017

Crash Classification	People in Crashes by Severity of Injuries					Total People
	Fatalities (Class K)	Suspected Serious Injuries (Class A)	Suspected Minor Injuries (Class B)	Possible Injuries (Class C)	No Apparent Injuries (Class O)	
Animal	0	0	1	0	6	7
Fixed Object	1	1	3	9	55	69
Other (Non-Collision)	0	0	5	1	9	15
Other (Object)	0	1	3	1	8	13
Other Vehicle	0	3	45	191	1,157	1,396
Overturn/Rollover	0	0	2	3	5	10
Parked Vehicle	0	0	1	4	133	138
Pedalcyclist	0	0	8	1	12	21
Pedestrian	1	2	3	5	13	24
Railroad Train	0	0	0	0	0	0
Rollover	0	0	0	1	2	3
Vehicle on Other Road	0	0	0	3	9	12
Missing Data	0	0	0	0	0	0
Total People	2	7	71	219	1,409	1,708

**Table 17: Killed or Injured Unbelted People in Crashes
by Sex and Age Group in Alamogordo, 2017**

Age Groups	Unbelted People Killed or Injured ^{1,2}				Total People
	Male	Percent of Male	Female	Percent of Female	
0-4	0	0%	0	0%	0
5-9	0	0%	0	0%	0
10-14	1	17%	1	100%	2
15-19	2	33%	0	0%	2
20-24	0	0%	0	0%	0
25-29	0	0%	0	0%	0
30-34	1	17%	0	0%	1
35-39	0	0%	0	0%	0
40-44	0	0%	0	0%	0
45-49	0	0%	0	0%	0
50-54	1	17%	0	0%	1
55-59	0	0%	0	0%	0
60-64	1	17%	0	0%	1
65-69	0	0%	0	0%	0
70 +	0	0%	0	0%	0
Missing Data	0	0%	0	0%	0
Total People	6	100%	1	100%	7

¹ People injured are in one of three categories: suspected serious injury, suspected minor injury, or possible injury.

² Excludes people in or on buses, heavy trucks, motorcycles, or ATVs.

**Figure 8: Seatbelt Use by People in Crashes with Fatal or
Suspected Serious Injuries in Alamogordo, 2013-2017**

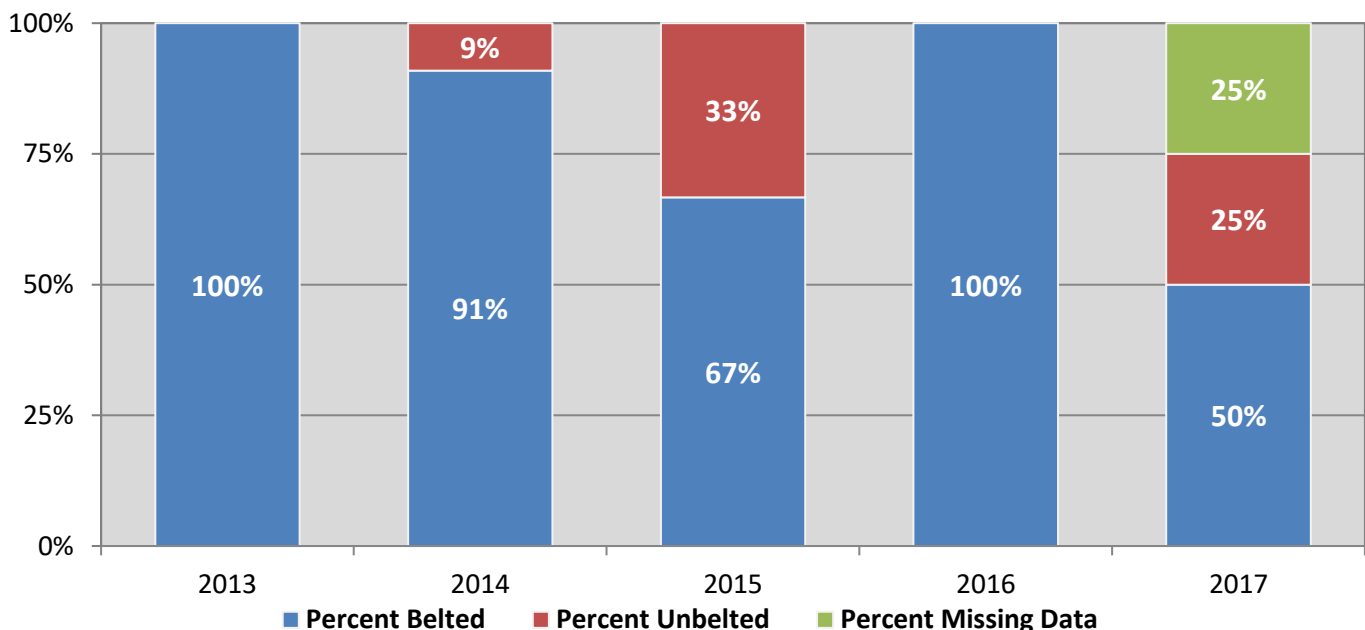
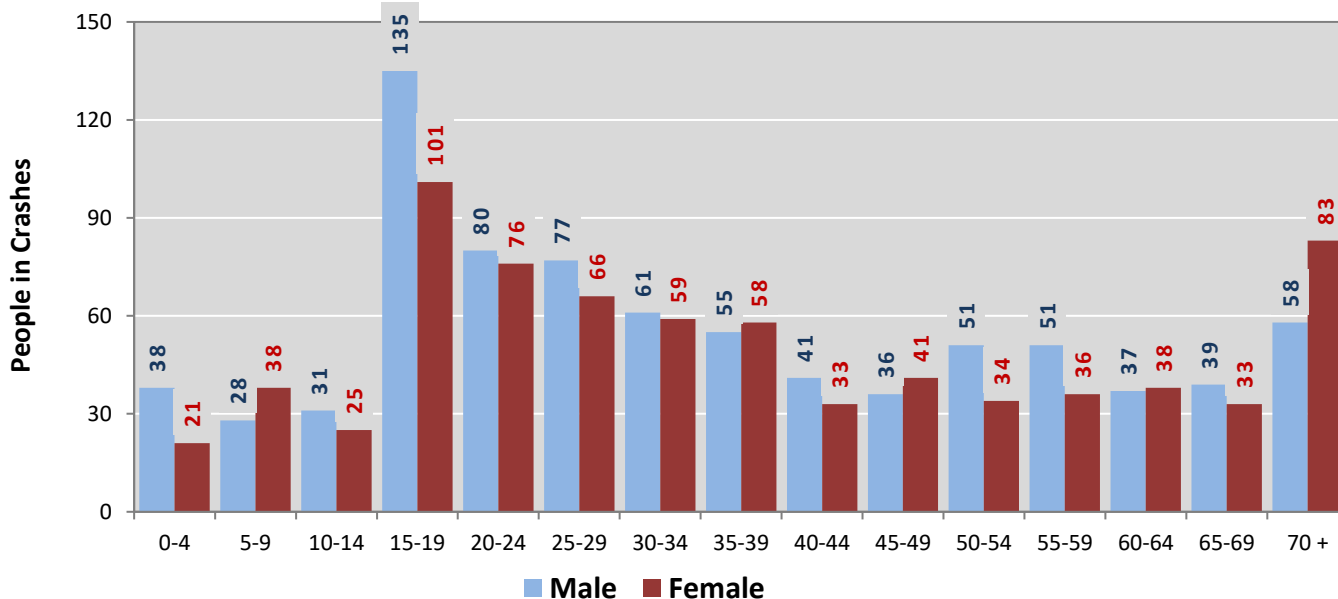
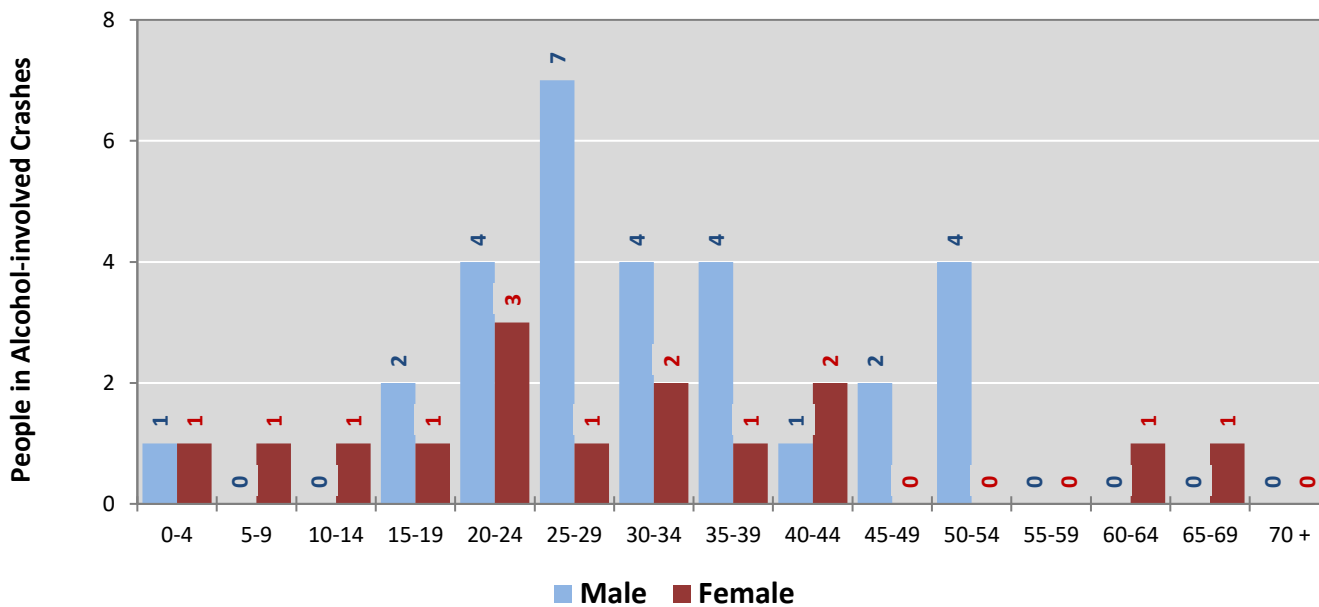


Figure 9: People in Crashes by Age Group and Sex in Alamogordo, 2017



* In 2017, Alamogordo had 148 people in crashes for which age or sex data were missing.

Figure 10: People in Alcohol-involved Crashes by Age Group and Sex in Alamogordo, 2017



* In 2017, Alamogordo had 2 people in alcohol-involved crashes for which age or sex data were missing.

**Table 18: Pedestrians and Pedalcyclists in Crashes
by Age Group in Alamogordo, 2013-2017**

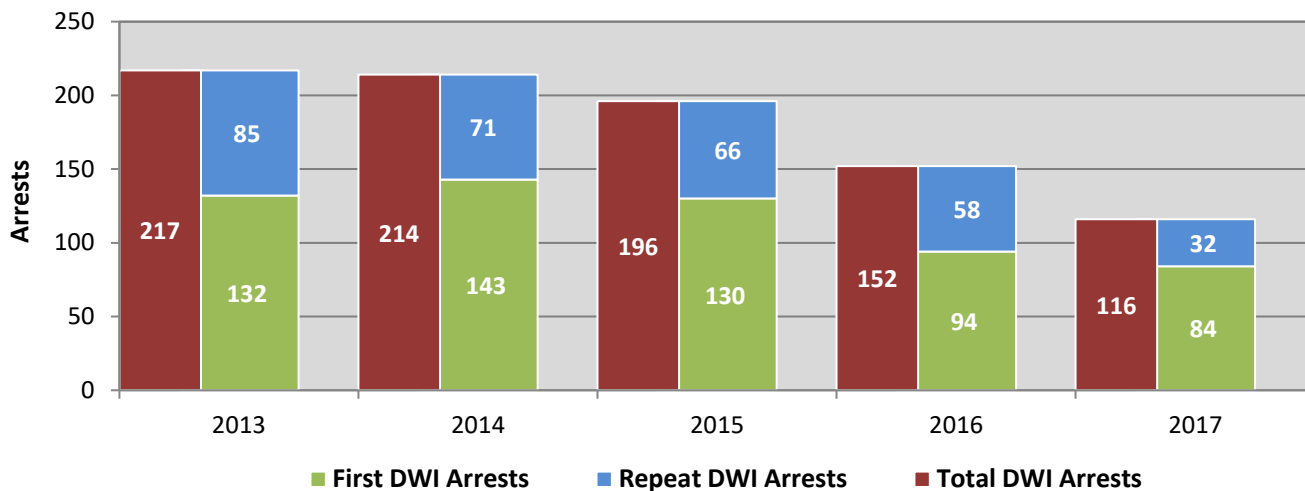
Age Groups	Pedestrians and Pedalcyclists ¹ in Crashes					5-Year Total People
	2013	2014	2015	2016	2017	
0-4	0	0	0	0	0	0
5-9	1	0	1	0	1	3
10-14	0	1	1	1	2	5
15-19	3	3	1	3	4	14
20-24	2	0	3	0	1	6
25-29	0	1	2	0	1	4
30-34	2	2	0	1	2	7
35-39	0	2	0	2	4	8
40-44	0	1	1	1	2	5
45-49	2	0	0	2	2	6
50-54	0	1	0	2	0	3
55-59	2	0	0	0	0	2
60-64	0	1	2	0	1	4
65-69	0	0	0	1	1	2
70 +	0	0	1	0	0	1
Missing Data	2	2	2	0	0	6
Total People	14	14	14	13	21	76

**Table 19: Pedestrians and Pedalcyclists in Crashes by Alcohol Involvement
and Severity of Injuries in Alamogordo, 2017**

Alcohol Involvement	Pedestrians and Pedalcyclists ¹ in Crashes					Total People
	Fatalities (Class K)	Suspected Serious Injuries (Class A)	Suspected Minor Injuries (Class B)	Possible Injuries (Class C)	No Apparent Injury (Class O)	
Total Pedalcyclists	0	0	8	1	1	10
Involved	0	0	0	0	1	1
Not Involved	0	0	8	1	0	9
Total Pedestrians	1	2	3	5	0	11
Involved	0	0	1	0	0	1
Not Involved	1	2	2	5	0	10
Total People	1	2	11	6	1	21

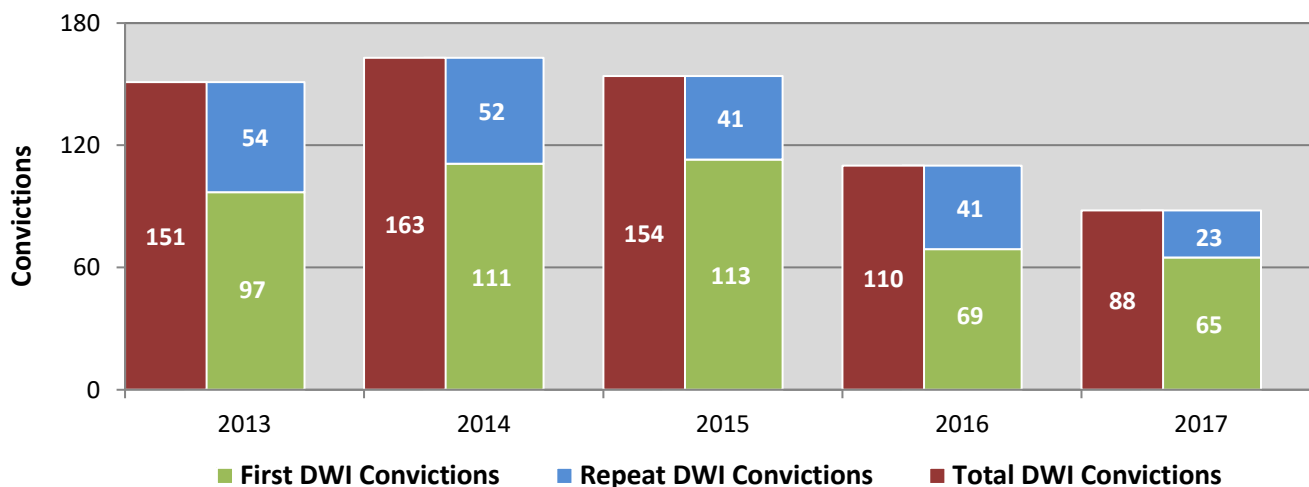
¹ Pedestrians and pedalcyclists are counted as non-motorized vehicles, when involved in a crash with a motor vehicle.

Figure 11: DWI Arrests of Alamogordo Residents Throughout the State, Showing First and Repeat DWI Arrests, 2013-2017



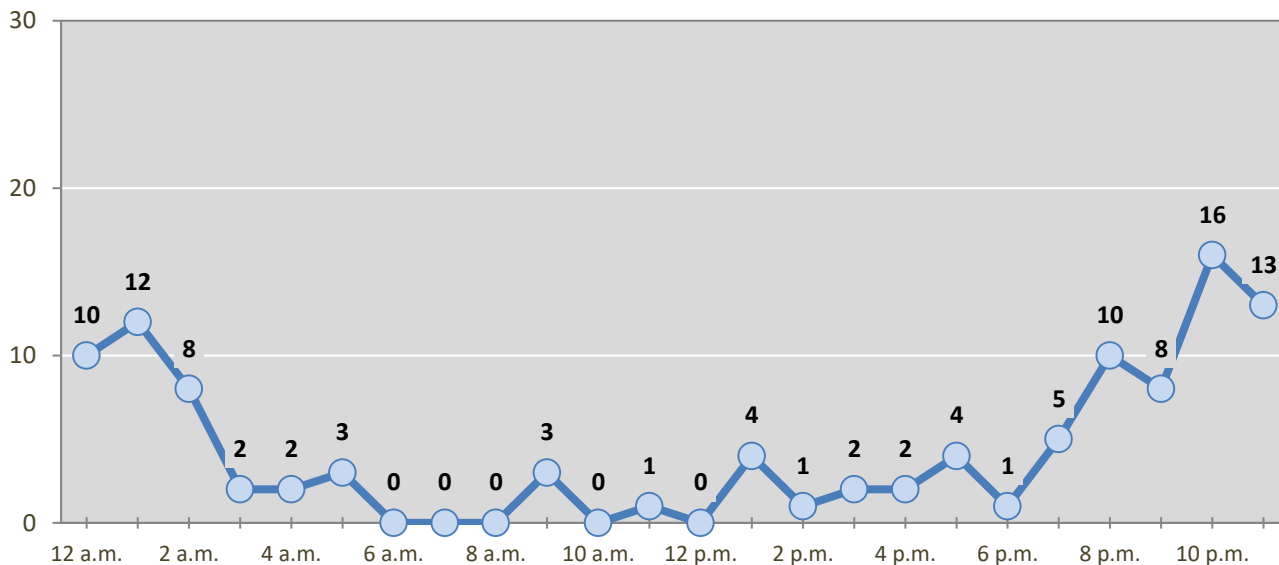
*Values are based upon the year of the arrest.

Figure 12: DWI Convictions of Alamogordo Residents Throughout the State, Showing First and Repeat DWI Convictions, 2013-2017



*Values are based upon the year of the conviction.

Figure 13: DWI Arrests by Hour of Alamogordo Residents Throughout the State, 2017



* In 2017, Alamogordo had 9 arrests for which hour data were missing.

Table 20: DWI Arrests by Day of Week of Alamogordo Residents Throughout the State, 2013-2017

Day of Week	Year					5-Year Average
	2013	2014	2015	2016	2017	
Sunday	49	54	47	30	20	40
Monday	17	24	13	15	11	16
Tuesday	20	16	13	13	15	15
Wednesday	20	19	26	11	12	18
Thursday	24	20	27	17	19	21
Friday	34	29	34	25	19	28
Saturday	53	52	36	41	20	40
Total Arrests	217	214	196	152	116	179

**Table 21: Driver First DWI Arrests by Age Group of Alamogordo Residents
Throughout the State, 2013-2017**

Age Groups	Driver First DWI Arrests ¹				
	2013	2014	2015	2016	2017
15-19	7	11	9	7	3
20-24	37	43	31	24	20
25-29	33	25	36	23	26
30-34	21	15	16	6	10
35-39	4	12	6	9	7
40-44	8	8	7	6	7
45-49	3	14	5	5	2
50-54	10	5	10	5	3
55-59	3	5	7	3	3
60-64	1	2	2	3	3
65-69	3	1	1	3	0
70 +	2	2	0	0	0
Missing Data	0	0	0	0	0
Total Drivers	132	143	130	94	84

¹Values are based upon the year of the arrest.

**Table 22: Driver Repeat DWI Arrests by Age Group of Alamogordo Residents
Throughout the State, 2013-2017**

Age Groups	Driver Repeat DWI Arrests ¹				
	2013	2014	2015	2016	2017
15-19	1	0	0	0	1
20-24	9	7	4	3	3
25-29	12	7	16	11	6
30-34	15	13	10	7	4
35-39	10	9	6	12	4
40-44	11	9	8	5	3
45-49	10	11	3	5	3
50-54	11	9	7	5	1
55-59	4	4	4	6	2
60-64	1	0	4	3	1
65-69	1	2	3	1	4
70 +	0	0	1	0	0
Missing Data	0	0	0	0	0
Total Drivers	85	71	66	58	32

¹Values are based upon the year of the arrest.

Table 23: Driver First DWI Convictions by Age Group of Alamogordo Residents Throughout the State, 2013-2017

Age Groups	Driver First DWI Convictions ¹				
	2013	2014	2015	2016	2017
15-19	5	10	4	2	4
20-24	26	38	29	20	11
25-29	23	22	25	15	22
30-34	15	11	11	10	8
35-39	5	4	9	5	7
40-44	9	7	7	2	5
45-49	4	7	8	4	0
50-54	6	5	9	4	4
55-59	1	3	7	4	1
60-64	1	2	0	2	1
65-69	1	2	2	1	2
70 +	1	0	2	0	0
Missing Data	0	0	0	0	0
Total Drivers	97	111	113	69	65

¹Values are based upon the year of the conviction.

Table 24: Driver Repeat DWI Convictions by Age Group of Alamogordo Residents Throughout the State, 2013-2017

Age Groups	Driver Repeat DWI Convictions ¹				
	2013	2014	2015	2016	2017
15-19	0	0	0	0	0
20-24	10	3	5	1	0
25-29	1	5	6	7	7
30-34	12	10	3	7	2
35-39	8	7	7	5	2
40-44	6	8	5	6	3
45-49	3	7	4	4	2
50-54	9	8	6	5	4
55-59	4	3	2	3	0
60-64	0	0	0	1	1
65-69	1	1	2	2	2
70 +	0	0	1	0	0
Missing Data	0	0	0	0	0
Total Drivers	54	52	41	41	23

¹Values are based upon the year of the conviction.

**Table 25: Court Disposition of DWI Arrests for the State
and of Alamogordo Residents Throughout the State, 2017**

Court Disposition of DWI Arrest ¹	Alamogordo	Statewide	Percent of Statewide
Total DWI Arrests	116	10,501	1.1%
DWI Arrests Resulting in Convictions	55	5,533	1.0%
DWI Arrests Resulting in Dismissals ²	4	1,426	0.3%
DWI Arrests Awaiting Disposition	57	3,542	1.6%

¹ These are the number of DWI arrests in 2017 and whether the case resulted in a conviction or dismissal, or is still awaiting court disposition, as reported in the NM MVD Citation Tracking System (CTS) as of February 2019.

² For this table, a very small number of "not guilty" rulings may be included in the category Dismissals.

**Table 26: Average Number of Days from Date of DWI Arrest to Date of Court Disposition
for the State and of Alamogordo Residents Throughout the State, 2017**

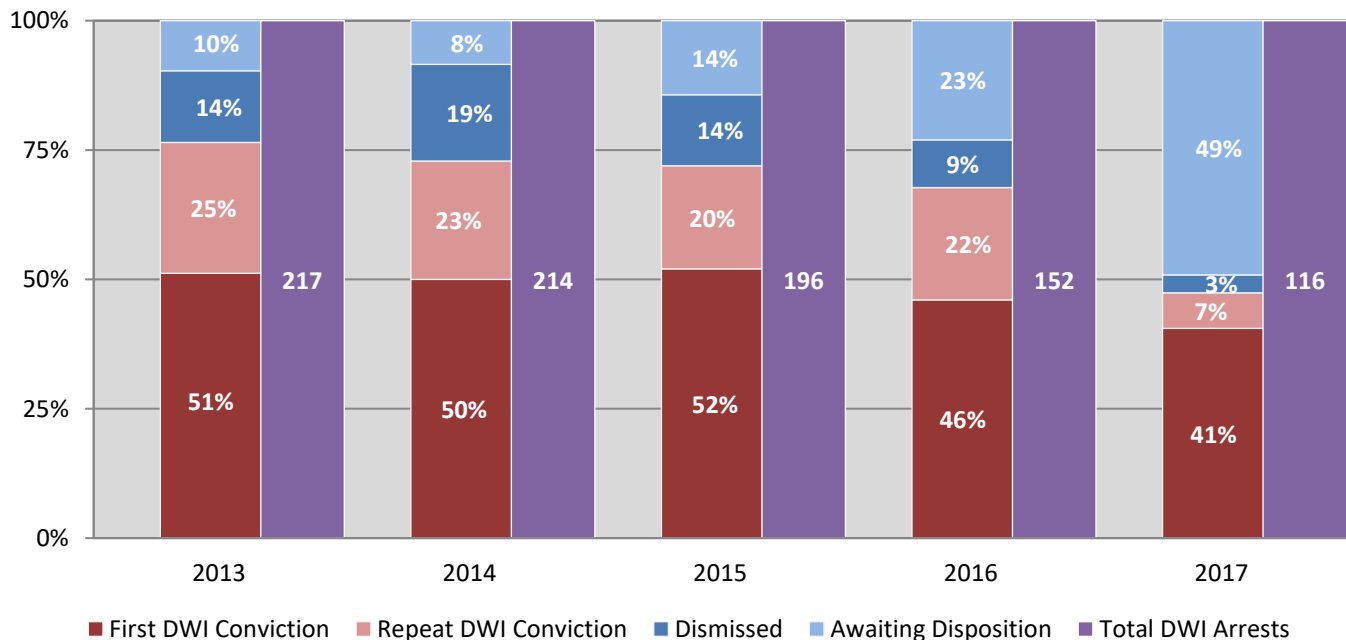
Court Disposition	Average Number of Days		Deviation from Statewide Average
	Alamogordo	Statewide	
DWI Conviction	75	166	-91
DWI Dismissal	213	175	38

**Table 27: Court Disposition of DWI Arrests of Alamogordo Residents
Throughout the State, 2013-2017**

Year of DWI Arrest ¹	Court Disposition				Total DWI Arrests
	First DWI Conviction	Repeat DWI Conviction	Dismissed	Awaiting Disposition	
2013	111	55	30	21	217
2014	107	49	40	18	214
2015	102	39	27	28	196
2016	70	33	14	35	152
2017	47	8	4	57	116

¹ Values are based upon the year of the arrest.

**Figure 14: Court Dispositions by Percentage of DWI Arrests of Alamogordo Residents
Throughout the State, 2013-2017**



*Table 27 contains the values used to calculate percentages shown in Figure 14.