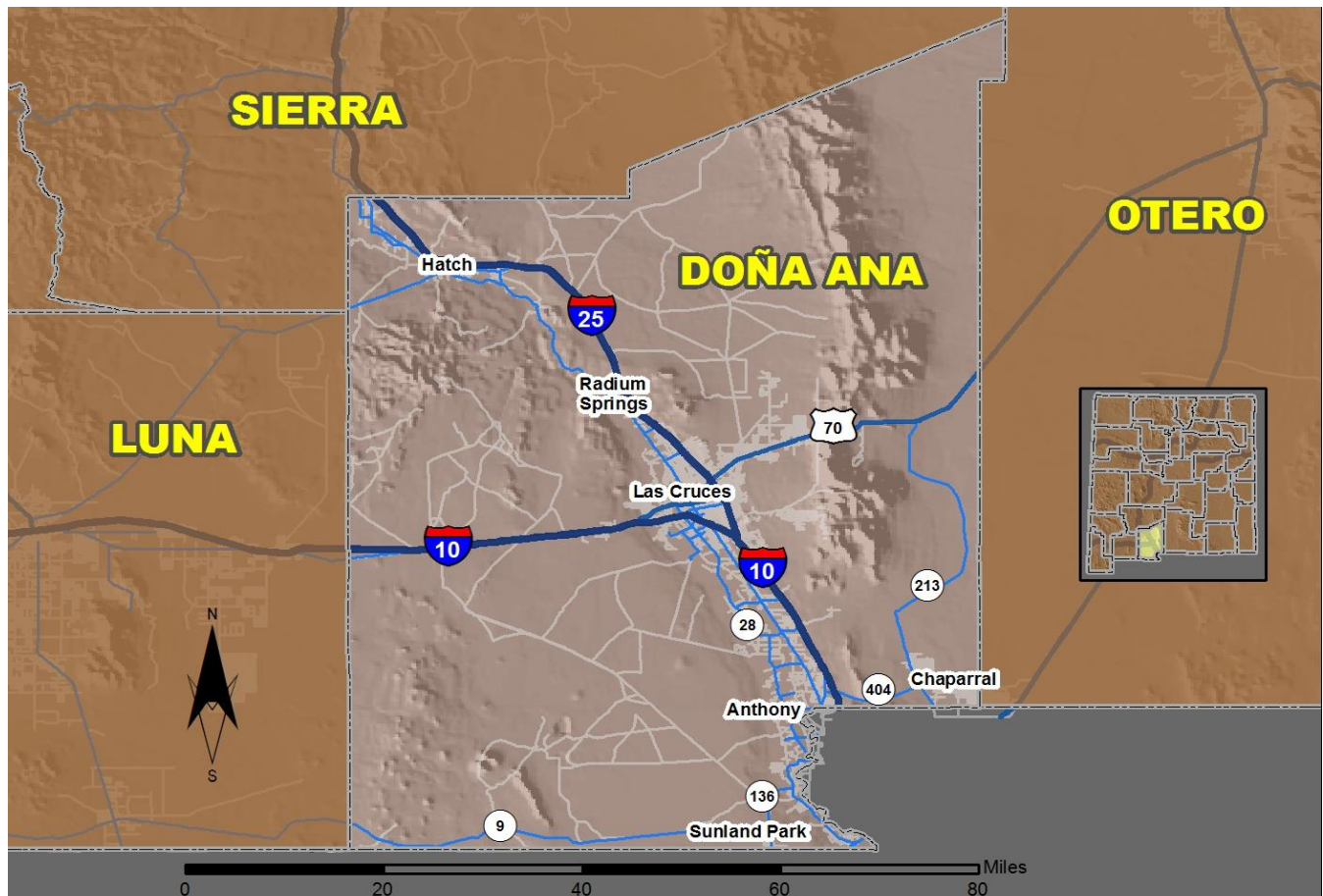


2017 Community Report

Las Cruces



Produced for the New Mexico Department of Transportation,
Traffic Safety Division, Traffic Records Bureau,
Under Contract 6093 by the University of New Mexico,
Geospatial and Population Studies, Traffic Research Unit

Distributed in compliance with New Mexico Statute 66-7-214
as a reference source regarding New Mexico traffic crashes

For the purposes of this report, data are compiled by the University of New Mexico, Geospatial and Population Studies, Traffic Research Unit (TRU), on behalf of the New Mexico Department of Transportation (NMDOT). Data in this report may differ from that in other data sources, such as the Federal Fatality Analysis Reporting System (FARS), due to the timing of publications and rules for how data are compiled and maintained in Federal vs. State databases. If you have questions regarding this report, please contact the Traffic Safety Division at 505-827-0427.

<http://tru.unm.edu/Crash-Reports/Community-Reports/>

Definitions

Aggravated DWI – A driver arrested for 1) driving with a BAC of 0.16 or higher, 2) driving under the influence of alcohol or drugs and causing bodily injury to a human being as a result, or 3) driving under the influence of alcohol or drugs and refusing to submit to a BAC test at the time of arrest for DWI.

Alcohol-involved Crash – A crash for which the Uniform Crash Report indicated that 1) a DWI citation was issued, 2) alcohol was a contributing factor, or 3) a person in control of a vehicle (including a pedestrian or pedalcyclist) was suspected of being under the influence of alcohol.

Alcohol-involved Driver – A person in control of a vehicle who was cited for DWI or indicated on the Uniform Crash Report as being either suspected or determined by testing to be under the influence of alcohol. There can be multiple alcohol-involved drivers in a single alcohol-involved crash.

Crash – A reported incident on a public roadway involving one or more motor vehicles that resulted in death, personal injury, or at least \$500 in property damage. Crashes on private property (such as a parking lot) are not included.

DWI Arrest (Citation) – In this report, a DWI arrest (a.k.a. a DWI citation) is a driver arrested for either DWI or aggravated DWI. New Mexico’s legal limit for presumption of driving while intoxicated (DWI) is 0.08 for non-commercial drivers older than 21 years of age, 0.04 for commercial vehicle drivers, and 0.02 for drivers younger than 21 years of age.

DWI Conviction – A driver convicted of driving under the intoxicating influence of alcohol, narcotics, or pathogenic drugs, including aggravated DWI.

Fatal Crash – A crash in which at least one person was killed. More than one person can be killed in a single fatal crash.

Fatalities – The number of people killed in a crash. The terms “killed” and “deaths” are synonymous with “fatalities.” A fatality is crash-related if it occurs at the time of the crash or if the person(s) involved in the crash dies within 30 days.

Injury Crash – A reported crash in which at least one person was injured. Injury crashes involve at least one suspected serious injury (Class A), suspected minor injury (Class B), or possible injury (Class C). Fatal crashes are not included.

Missing Data – An indication that the applicable field on the UCR form was left blank or contained an invalid code. Starting with crashes that occurred in 2012, improvements in the identification of missing data in the NMDOT crash database led to an increase in the reported amount of missing data.

Pedalcyclist – A person riding a mechanism of transport that is powered solely by pedals (a.k.a. bicyclist).

Pedestrian – A person on foot, walking, running, jogging, hiking, sitting or lying down who is involved in a motor vehicle traffic crash.

Sources

Crash Data – New Mexico Department of Transportation, Traffic Safety Division, Traffic Records Bureau, Traffic Crash Database, as of the report date below. Crash data are compiled using NMDOT Uniform Crash Reports (UCR), submitted by law enforcement agencies in the state, for any incident on a public roadway involving one or more motor vehicles that resulted in death, injury, or at least \$500 in property damage. These reports are processed by the NMDOT Traffic Records Bureau and analyzed by the University of New Mexico, Geospatial and Population Studies, Traffic Research Unit (TRU).

DWI Citation Tracking System (CTS) – New Mexico Taxation and Revenue Department (NM TRD), Motor Vehicle Division (MVD), DWI Citation Tracking System (CTS), as of February 2019. Repeat offenders are identified by the combination of account key, arrest date, and citation number. County data are based upon the county where the arrest took place. City data are based upon the city where the offender resides.

Urban Areas – New Mexico Department of Transportation, Asset Management and Planning, 2010 U.S. Census Urbanized Area Boundaries, NMDOT-Adjusted, and U.S. Census Urban Clusters, August 21, 2013. In crashes before 2013, “urban” was defined as a town or city with a population of at least 2,500 people.

**Table 1: Total Crashes and Alcohol-involved Crashes by
Crash Severity in Las Cruces, 2008-2017**

Year	Total Crashes				Alcohol-involved Crashes			
	Fatal	Injury	Property Damage Only	Total	Fatal	Injury	Property Damage Only	Total
2008	4	1,049	2,114	3,167	2	67	70	139
2009	7	989	2,204	3,200	3	73	75	151
2010	6	1,060	2,181	3,247	4	56	70	130
2011	2	1,066	2,287	3,355	1	73	77	151
2012	6	871	2,280	3,157	2	36	64	102
2013	4	963	2,244	3,211	2	57	58	117
2014	8	962	2,209	3,179	3	60	65	128
2015	8	1,046	2,504	3,558	4	43	78	125
2016	11	1,168	2,352	3,531	3	43	64	110
2017	13	1,180	2,363	3,556	4	52	76	132

**Figure 1: Alcohol-involved Fatal and Injury Crashes Compared with
Non-alcohol-involved Fatal and Injury Crashes in Las Cruces, 2008-2017**

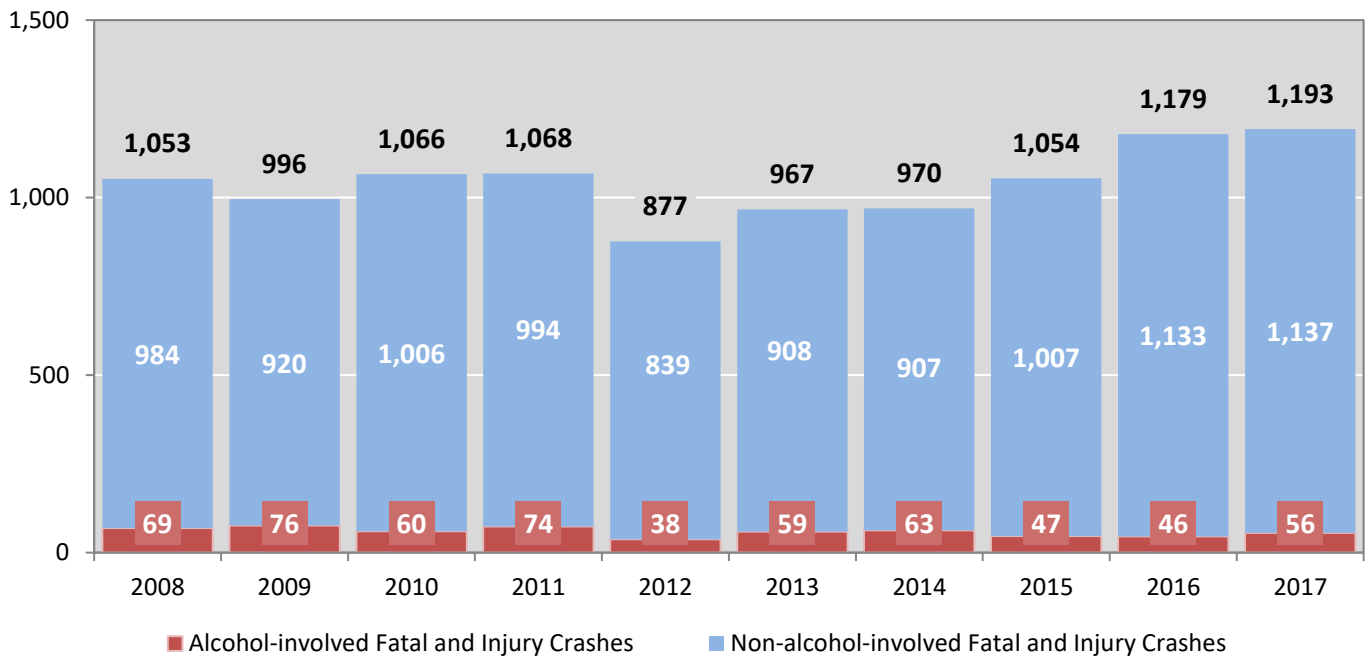


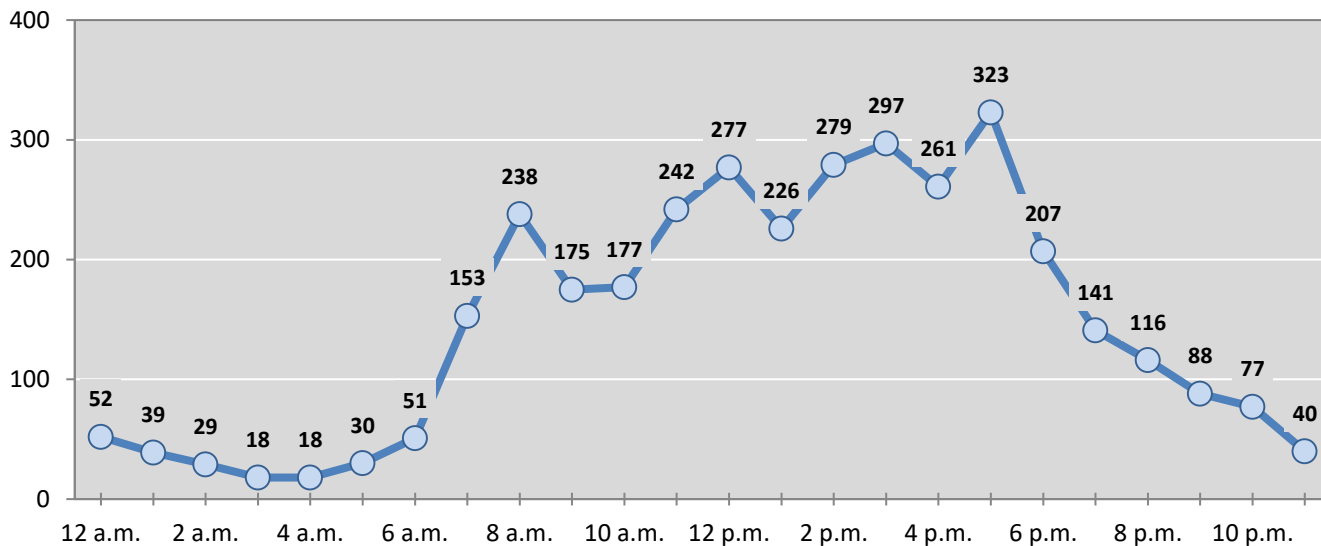
Table 2: Crashes by Month in Las Cruces, 2013-2017

Month	Crashes					5-Year Average
	2013	2014	2015	2016	2017	
January	252	242	283	275	258	262
February	201	236	293	278	267	255
March	300	244	267	306	309	285
April	273	277	289	321	337	299
May	264	261	289	298	311	285
June	205	274	225	226	222	230
July	237	245	272	253	252	252
August	274	283	302	327	291	295
September	331	306	307	293	324	312
October	320	304	360	331	351	333
November	298	214	312	289	338	290
December	256	293	359	334	296	308
Total Crashes	3,211	3,179	3,558	3,531	3,556	3,407

Table 3: Alcohol-involved Crashes by Month in Las Cruces, 2013-2017

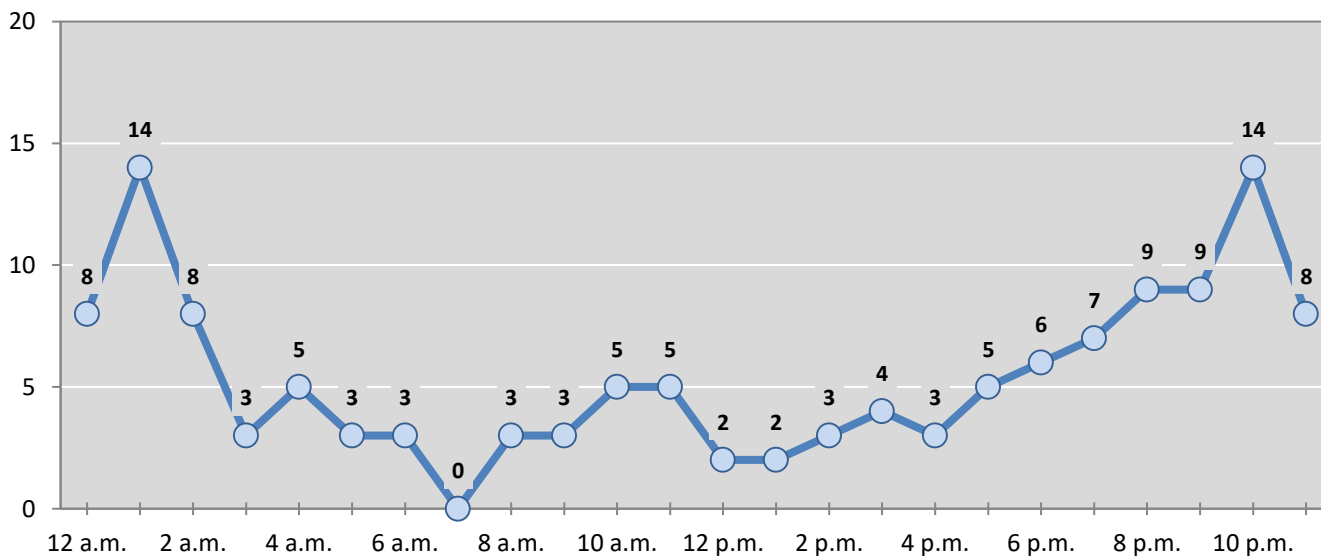
Month	Alcohol-involved Crashes					5-Year Average
	2013	2014	2015	2016	2017	
January	11	7	17	13	7	11
February	8	7	14	6	13	10
March	15	14	10	9	10	12
April	8	20	5	11	13	11
May	8	3	15	7	14	9
June	9	17	6	9	5	9
July	6	9	4	10	13	8
August	9	10	10	9	7	9
September	10	9	10	8	8	9
October	9	13	13	14	14	13
November	14	9	12	7	17	12
December	10	10	9	7	11	9
Total Crashes	117	128	125	110	132	122

Figure 2: Crashes by Hour in Las Cruces, 2017



* In 2017, Las Cruces had 2 crashes for which hour data were missing.

Figure 3: Alcohol-involved Crashes by Hour in Las Cruces, 2017



* In 2017, Las Cruces had 0 alcohol-involved crashes for which hour data were missing.

Table 4: Alcohol-involved Crashes by Day of Week in Las Cruces, 2013-2017

Day of Week	Alcohol-involved Crashes					5-Year Average
	2013	2014	2015	2016	2017	
Sunday	23	21	30	18	23	23
Monday	12	11	11	10	14	12
Tuesday	12	8	9	8	9	9
Wednesday	11	21	18	11	12	15
Thursday	13	15	13	11	18	14
Friday	19	21	22	24	24	22
Saturday	27	31	22	28	32	28
Total Crashes	117	128	125	110	132	122

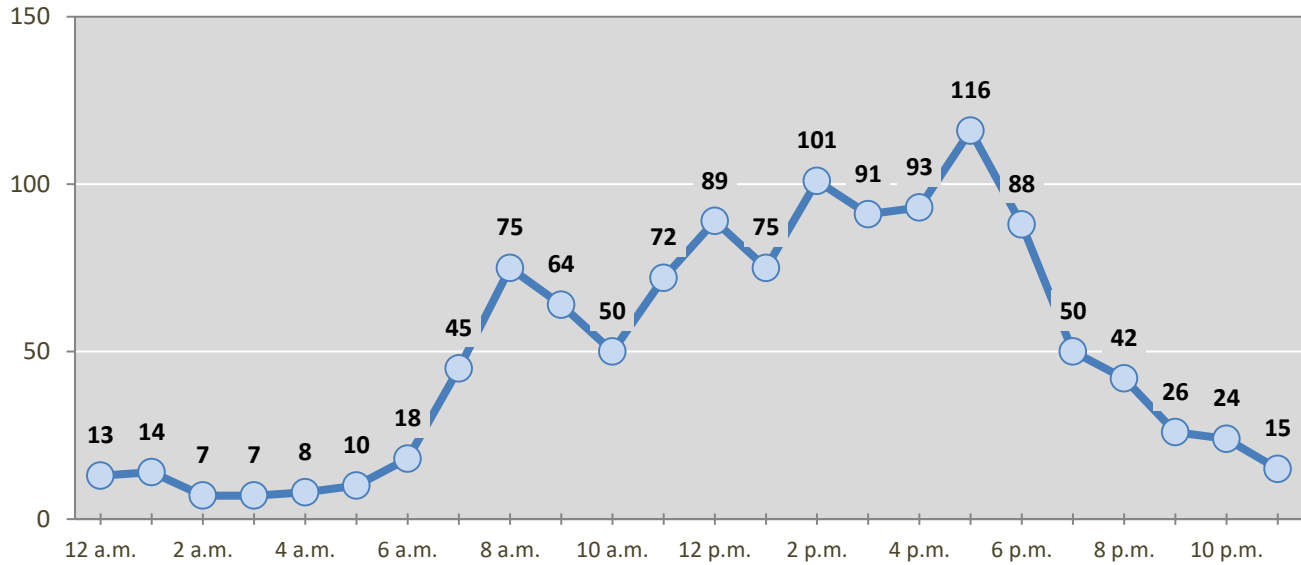
Table 5: Fatal and Injury Crashes by Day of Week in Las Cruces, 2013-2017

Day of Week	Fatal and Injury Crashes					5-Year Average
	2013	2014	2015	2016	2017	
Sunday	86	84	70	103	91	87
Monday	139	169	172	159	175	163
Tuesday	187	138	153	197	181	171
Wednesday	143	168	163	202	174	170
Thursday	136	143	180	190	208	171
Friday	173	167	201	193	229	193
Saturday	103	101	115	135	135	118
Total Crashes	967	970	1,054	1,179	1,193	1,073

Table 6: Pedestrian and Pedalcyclist Crashes by Day of Week in Las Cruces, 2013-2017

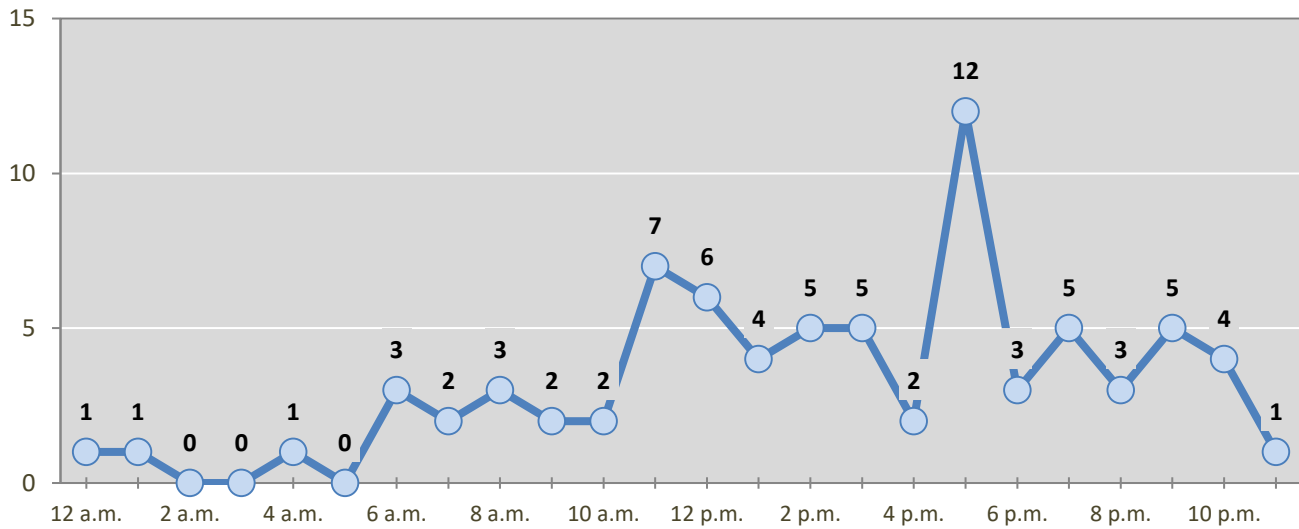
Day of Week	Pedestrian and Pedalcyclist Crashes					5-Year Average
	2013	2014	2015	2016	2017	
Sunday	4	7	2	8	2	5
Monday	12	12	17	9	15	13
Tuesday	12	10	17	15	17	14
Wednesday	9	14	12	19	12	13
Thursday	10	10	8	16	13	11
Friday	18	10	7	11	8	11
Saturday	7	9	10	6	10	8
Total Crashes	72	72	73	84	77	76

Figure 4: Fatal and Injury Crashes by Hour in Las Cruces, 2017



* In 2017, Las Cruces had 0 crashes for which hour data were missing.

Figure 5: Pedestrian and Pedalcyclist Crashes by Hour in Las Cruces, 2017



* In 2017, Las Cruces had 0 crashes for which hour data were missing.

Table 7: Severity of Injuries to People in Crashes by Rural and Urban Location in Las Cruces, 2017

Urban and Rural Locations by Alcohol-involvement	People in Crashes by Severity of Injuries					Total People
	Fatalities (Class K)	Suspected Serious Injuries (Class A)	Suspected Minor Injuries (Class B)	Possible Injuries (Class C)	No Apparent Injuries (Class O)	
People in Alcohol-involved Crashes	4	7	26	39	195	271
Urban	4	7	25	39	195	270
Rural Non-Interstate	0	0	1	0	0	1
Rural Interstate	0	0	0	0	0	0
People in Crashes	13	99	362	1,189	8,054	9,717
Urban	13	99	361	1,189	8,052	9,714
Rural Non-Interstate	0	0	1	0	2	3
Rural Interstate	0	0	0	0	0	0
Percent in Alcohol-involved Crashes	31%	7%	7%	3%	2%	3%

Table 8: Total Crashes by Roadway System and Crash Severity in Las Cruces, 2013-2017

Crash Severity by System	Crashes by Year					5-Year Average
	2013	2014	2015	2016	2017	
Total Rural Interstate	41	24	0	0	0	13
Fatal Crash	0	0	0	0	0	0
Injury Crash	14	7	0	0	0	4
Property Damage Only Crash	27	17	0	0	0	9
Total Rural Non-Interstate	43	48	0	0	2	18
Fatal Crash	1	0	0	0	0	0
Injury Crash	14	21	0	0	1	7
Property Damage Only Crash	28	27	0	0	1	11
Total Urban	3,127	3,107	3,558	3,531	3,554	3,375
Fatal Crash	3	8	8	11	13	9
Injury Crash	935	934	1,046	1,168	1,179	1,052
Property Damage Only Crash	2,189	2,165	2,504	2,352	2,362	2,314

Table 9: Total Crashes by Crash Classification in Las Cruces, 2013-2017

Crash Classification	Total Crashes by Year					5-Year Average
	2013	2014	2015	2016	2017	
Animal	8	6	9	14	5	8
Fixed Object	306	283	282	289	258	284
Other (Non-Collision)	25	24	19	40	30	28
Other (Object)	53	62	42	54	52	53
Other Vehicle	2,428	2,408	2,838	2,811	2,880	2,673
Overturn/Rollover	86	77	24	46	48	56
Parked Vehicle	172	178	189	144	194	175
Pedalcyclist	29	36	40	39	30	35
Pedestrian	44	41	32	45	47	42
Railroad Train	2	2	1	0	0	1
Rollover	0	3	38	15	8	13
Vehicle on Other Road	5	10	2	2	4	5
Missing Data	53	49	42	32	0	35
Total Crashes	3,211	3,179	3,558	3,531	3,556	3,407

Table 10: Vehicles in Crashes by Vehicle Type in Las Cruces, 2013-2017

Vehicle Type ¹	Vehicles in Crashes by Vehicle Type					5-Year Average
	2013	2014	2015	2016	2017	
Bus	17	12	21	16	33	20
Motorcycle	122	100	106	84	95	101
Passenger	3,227	3,513	4,143	4,090	3,970	3,789
Pedalcyclist	29	35	40	41	31	35
Pedestrian	44	39	35	47	52	43
Pickup	1,008	875	995	1,084	1,171	1,027
Semi	148	164	144	131	141	146
Van/SUV/4WD	1,011	942	1,048	1,166	1,277	1,089
Other Vehicle	42	22	54	14	8	28
Missing Data	374	288	354	228	228	294
Total Vehicles	6,022	5,990	6,940	6,901	7,006	6,572

¹ Pedestrians and pedalcyclists are counted as non-motorized vehicles, when involved in a crash with a motor vehicle. See Page 17 for data on drivers of non-motorized vehicles in crashes (i.e. pedestrians and pedalcyclists).

Table 11: Motor Vehicle Drivers in Crashes by Vehicle Type and Age Group in Las Cruces, 2017

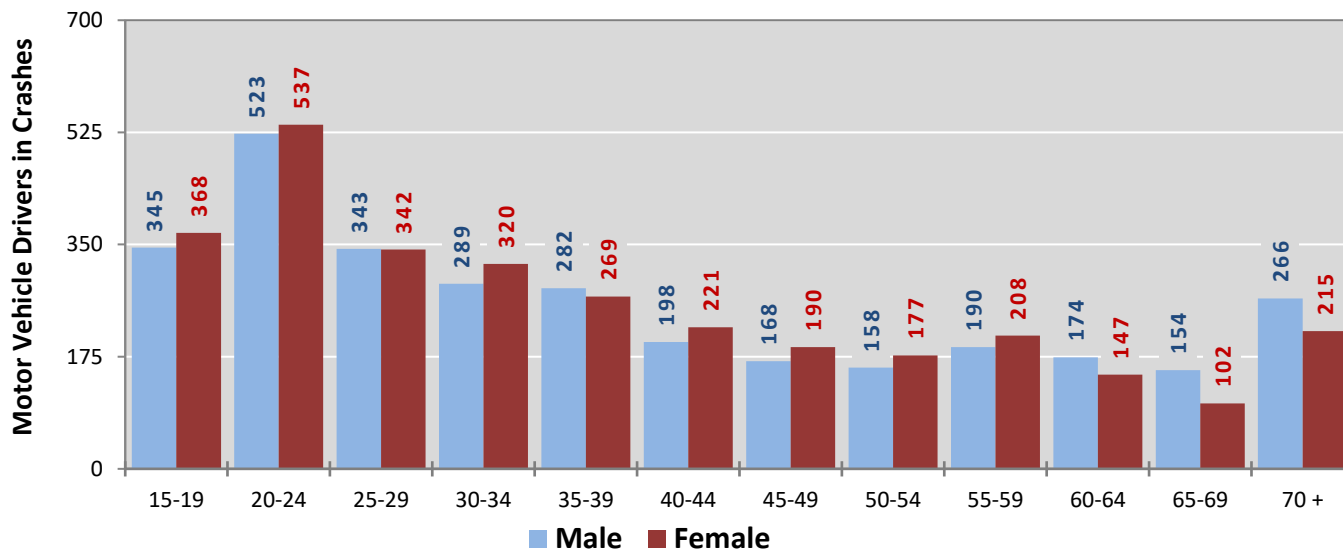
Age Groups	Motor Vehicle ¹ Drivers by Vehicle Type and Age Group								Total Drivers
	Bus	Motor-cycle	Passenger	Pickup	Semi	Van 4WD SUV	Other Vehicle	Missing Data	
15-19	0	3	512	111	5	78	0	4	713
20-24	0	24	749	142	7	130	0	8	1,060
25-29	0	8	447	100	11	116	0	4	686
30-34	2	14	321	115	5	147	0	5	609
35-39	1	9	294	99	17	126	1	5	552
40-44	2	6	231	66	16	94	1	3	419
45-49	1	4	182	71	16	80	0	5	359
50-54	4	4	155	75	12	83	0	2	335
55-59	10	9	203	63	25	88	0	0	398
60-64	8	5	156	69	10	72	1	0	321
65-69	1	4	135	51	3	61	1	1	257
70 +	3	1	264	99	4	109	1	0	481
Missing Data	1	4	321	110	10	93	3	191	733
Total Drivers	33	95	3,970	1,171	141	1,277	8	228	6,923

Table 12: Alcohol-involved Motor Vehicle Drivers in Crashes by Vehicle Type and Age Group in Las Cruces, 2017

Age Groups	Alcohol-involved Motor Vehicle ¹ Drivers by Vehicle Type and Age Group								Total Drivers
	Bus	Motor-cycle	Passenger	Pickup	Semi	Van 4WD SUV	Other Vehicle	Missing Data	
15-19	0	0	7	4	0	0	0	0	11
20-24	0	1	25	6	0	2	0	0	34
25-29	0	0	15	4	0	3	0	0	22
30-34	0	1	5	7	0	2	0	0	15
35-39	0	1	7	6	0	2	0	0	16
40-44	0	0	4	2	0	2	0	0	8
45-49	0	0	0	0	0	5	0	0	5
50-54	0	0	0	2	0	0	0	0	2
55-59	0	1	4	3	0	1	0	0	9
60-64	0	0	0	0	0	0	0	0	0
65-69	0	0	1	1	0	0	0	0	2
70 +	0	1	2	1	0	1	0	0	5
Missing Data	0	0	1	0	0	0	0	1	2
Total Drivers	0	5	71	36	0	18	0	1	131

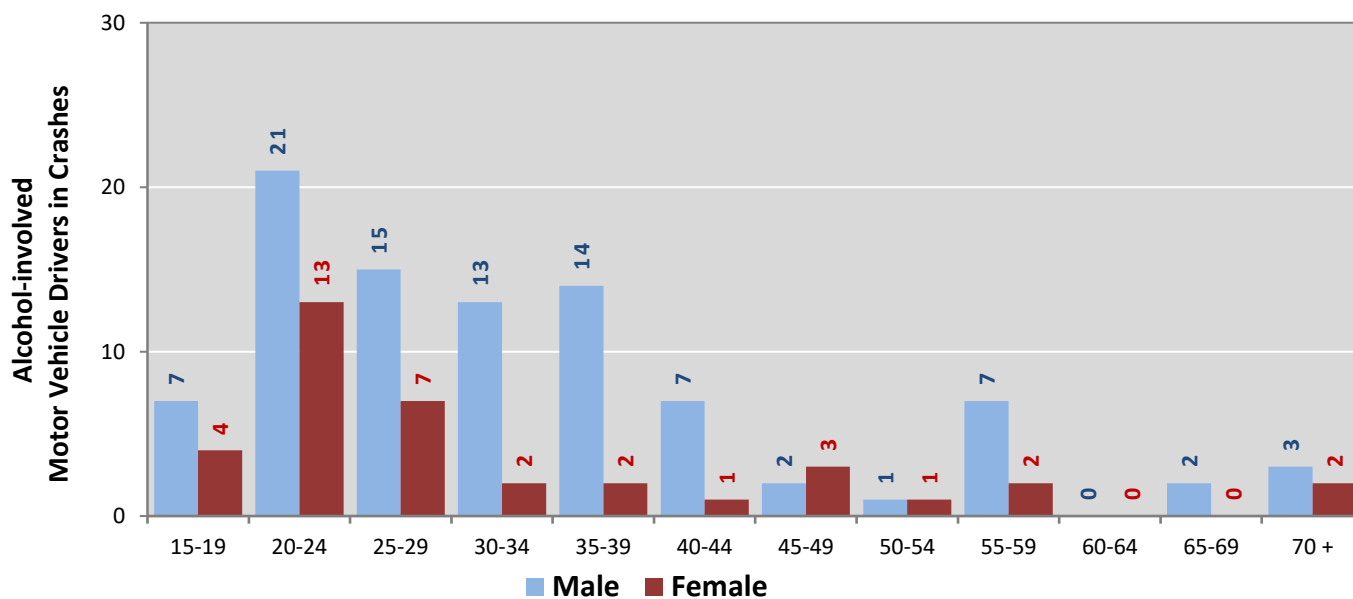
¹ See Page 17 for data on drivers of non-motorized vehicles in crashes (i.e. pedestrians and pedalcyclists).

Figure 6: Motor Vehicle Drivers in Crashes by Age Group and Sex in Las Cruces, 2017



* In 2017, Las Cruces had 737 drivers in crashes for which age or sex data were missing.

Figure 7: Alcohol-involved Motor Vehicle Drivers in Crashes by Age Group and Sex in Las Cruces, 2017



* In 2017, Las Cruces had 2 drivers in crashes for which age or sex data were missing.

**Table 13: Alcohol-involved Motor Vehicle Drivers Under 21
(Ages 15-20) in Crashes in Las Cruces, 2013-2017**

Age ¹	Year					5-Year Total
	2013	2014	2015	2016	2017	
15	0	0	0	0	0	0
16	0	0	2	1	1	4
17	1	0	3	1	2	7
18	1	2	1	6	2	12
19	4	6	2	0	6	18
20	9	10	3	3	5	30
Total Drivers	15	18	11	11	16	71

**Table 14: Motor Vehicle Drivers Under 21 (Ages 15-20) in Crashes
by Age, Sex and Alcohol-involvement in Las Cruces, 2017**

Age ¹	Total Drivers				Alcohol-involved Drivers			
	Sex		Total Drivers	Percent of Total	Sex		Total Drivers	Percent of Total
	Male	Female			Male	Female		
15	11	9	20	2%	0	0	0	0%
16	51	52	103	11%	1	0	1	6%
17	67	57	124	13%	1	1	2	13%
18	111	113	224	23%	0	2	2	13%
19	105	137	242	25%	5	1	6	38%
20	117	125	242	25%	3	2	5	31%
Total Drivers	462	493	955	100%	10	6	16	100%

¹ For analysis of drivers under age 21, when the driver age or sex are not identified on the crash report (typically hit-and-run drivers), the driver data are considered unreliable and are excluded from the analysis.

**Table 15: Frequency of Contributing Factors in Crashes
by Crash Severity in Las Cruces, 2017**

Contributing Factors	Frequency of Contributing Factor ¹ by Crash Severity			
	Frequency in Fatal Crashes	Frequency in Injury Crashes	Frequency in Property Damage Only Crashes	Frequency in All Crashes
Human	26	1,331	2,410	3,767
Driver Inattention	2	465	823	1,290
Failed to Yield Right of Way	1	216	309	526
Following Too Closely	0	123	220	343
Other Improper Driving	2	113	225	340
Made Improper Turn	0	50	110	160
Disregarded Traffic Signal	0	73	73	146
Improper Lane Change	0	17	125	142
Alcohol Involved	5	53	76	134
Avoid No Contact - Vehicle	0	37	93	130
Excessive Speed	4	48	49	101
Improper Backing	0	7	84	91
Speed Too Fast for Conditions	2	31	53	86
Drove Left Of Center	2	18	39	59
Passed Stop Sign	0	21	32	53
Improper Overtaking	1	9	34	44
Pedestrian Error	4	14	4	22
Drug Involved	1	9	12	22
Cell Phone	0	7	14	21
Avoid No Contact - Other	0	8	12	20
High Speed Pursuit	1	5	6	12
Driverless Moving Vehicle	0	3	6	9
Texting	0	2	3	5
Failed to Yield to Police Vehicle	1	0	3	4
Vehicle Skidded Before Brake	0	1	3	4
Failed to Yield to Emergency Vehicle	0	1	2	3
Vehicle	0	29	73	102
Inadequate Brakes	0	17	29	46
Other Mechanical Defect	0	6	26	32
Defective Tires	0	4	15	19
Defective Steering	0	2	3	5
Environment	0	2	10	12
Road Defect	0	2	8	10
Traffic Control Not Functioning	0	0	2	2
Low Visibility Due to Smoke	0	0	0	0
Other	6	1,187	2,149	3,342
None	6	1,034	1,880	2,920
Other - No Driver Error	0	153	269	422

¹ Multiple contributing factors may be reported for any vehicle in a crash.

Table 16: People in Crashes by Crash Classification and Severity of Injuries in Las Cruces, 2017

Crash Classification	People in Crashes by Severity of Injuries					Total People
	Fatalities (Class K)	Suspected Serious Injuries (Class A)	Suspected Minor Injuries (Class B)	Possible Injuries (Class C)	No Apparent Injuries (Class O)	
Animal	0	0	0	0	8	8
Fixed Object	1	14	38	31	264	348
Other (Non-Collision)	1	0	9	6	22	38
Other (Object)	0	2	4	10	70	86
Other Vehicle	5	71	245	1,108	7,123	8,552
Overturn/Rollover	1	3	17	8	41	70
Parked Vehicle	0	1	3	3	405	412
Pedalcyclist	0	2	19	7	41	69
Pedestrian	5	6	22	13	69	115
Railroad Train	0	0	0	0	0	0
Rollover	0	0	5	3	4	12
Vehicle on Other Road	0	0	0	0	7	7
Missing Data	0	0	0	0	0	0
Total People	13	99	362	1,189	8,054	9,717

**Table 17: Killed or Injured Unbelted People in Crashes
by Sex and Age Group in Las Cruces, 2017**

Age Groups	Unbelted People Killed or Injured ^{1,2}				Total People
	Male	Percent of Male	Female	Percent of Female	
0-4	0	0%	2	8%	2
5-9	1	8%	0	0%	1
10-14	0	0%	2	8%	2
15-19	1	8%	6	24%	7
20-24	3	23%	5	20%	8
25-29	2	15%	3	12%	5
30-34	0	0%	5	20%	5
35-39	1	8%	0	0%	1
40-44	2	15%	1	4%	3
45-49	0	0%	0	0%	0
50-54	2	15%	1	4%	3
55-59	1	8%	0	0%	1
60-64	0	0%	0	0%	0
65-69	0	0%	0	0%	0
70 +	0	0%	0	0%	0
Missing Data	0	0%	0	0%	0
Total People	13	100%	25	100%	38

¹ People injured are in one of three categories: suspected serious injury, suspected minor injury, or possible injury.

² Excludes people in or on buses, heavy trucks, motorcycles, or ATVs.

**Figure 8: Seatbelt Use by People in Crashes with Fatal or
Suspected Serious Injuries in Las Cruces, 2013-2017**

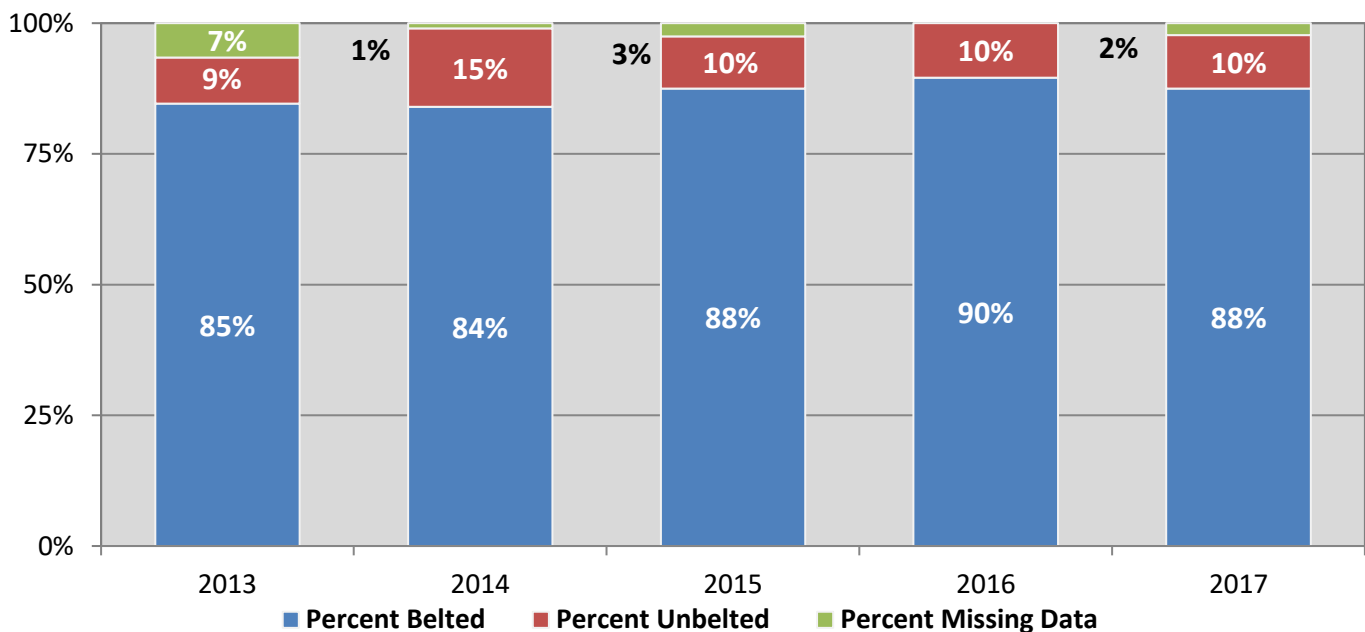
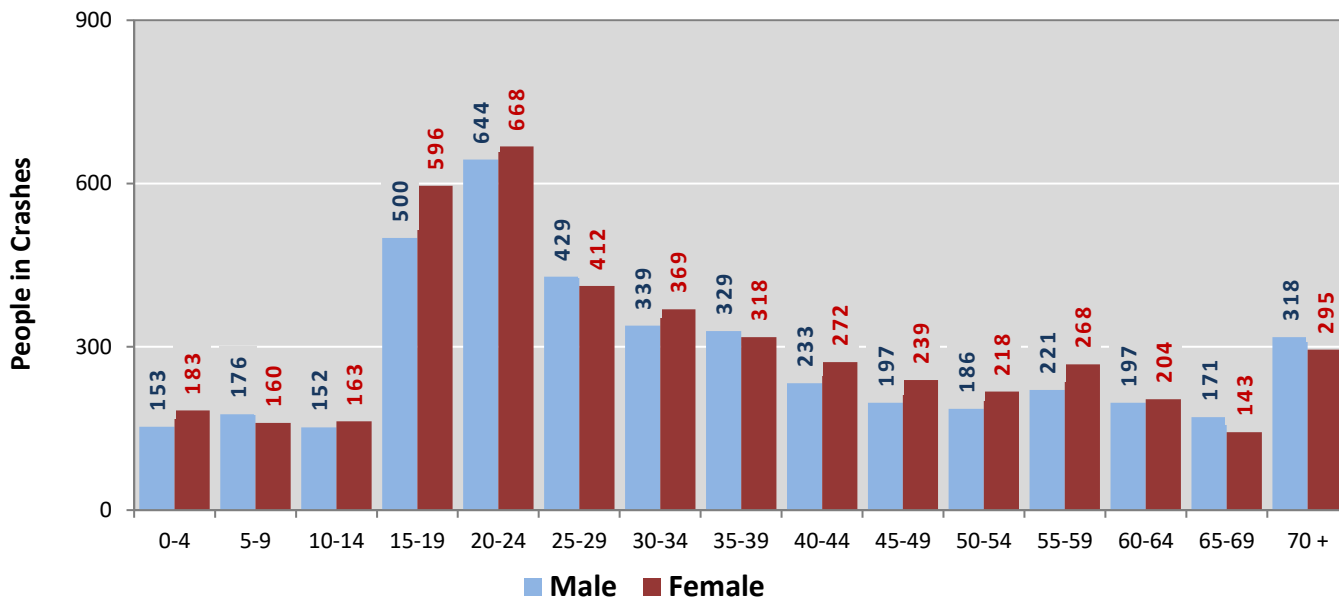
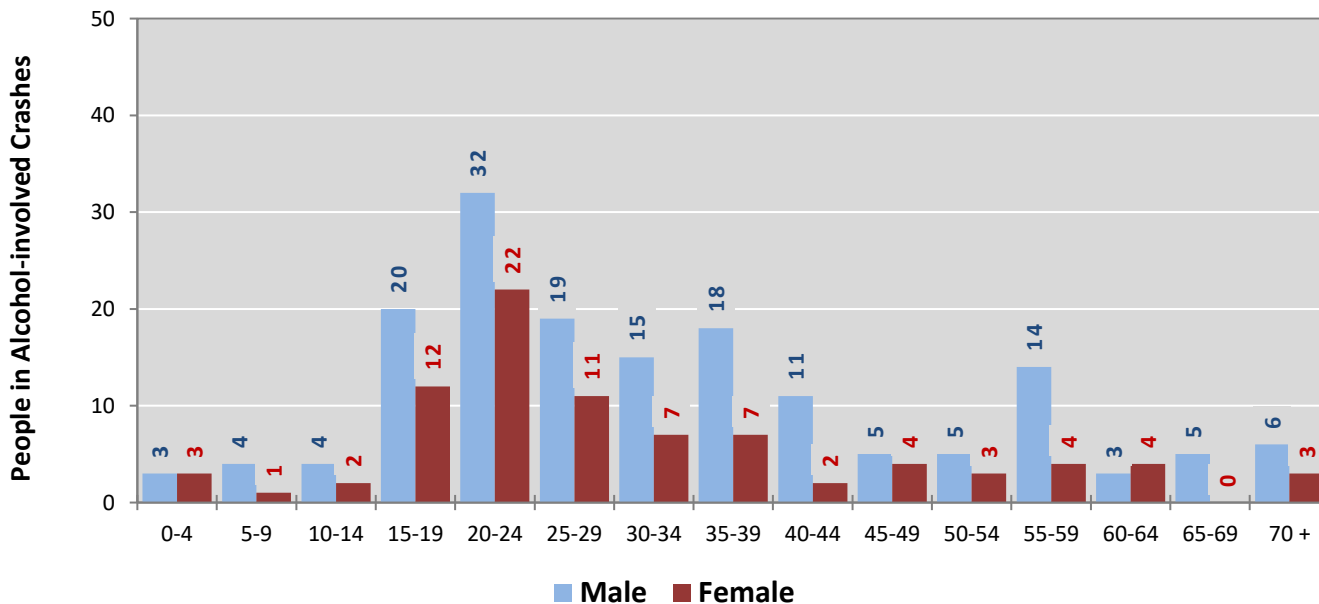


Figure 9: People in Crashes by Age Group and Sex in Las Cruces, 2017



* In 2017, Las Cruces had 964 people in crashes for which age or sex data were missing.

Figure 10: People in Alcohol-involved Crashes by Age Group and Sex in Las Cruces, 2017



* In 2017, Las Cruces had 22 people in alcohol-involved crashes for which age or sex data were missing.

**Table 18: Pedestrians and Pedalcyclists in Crashes
by Age Group in Las Cruces, 2013-2017**

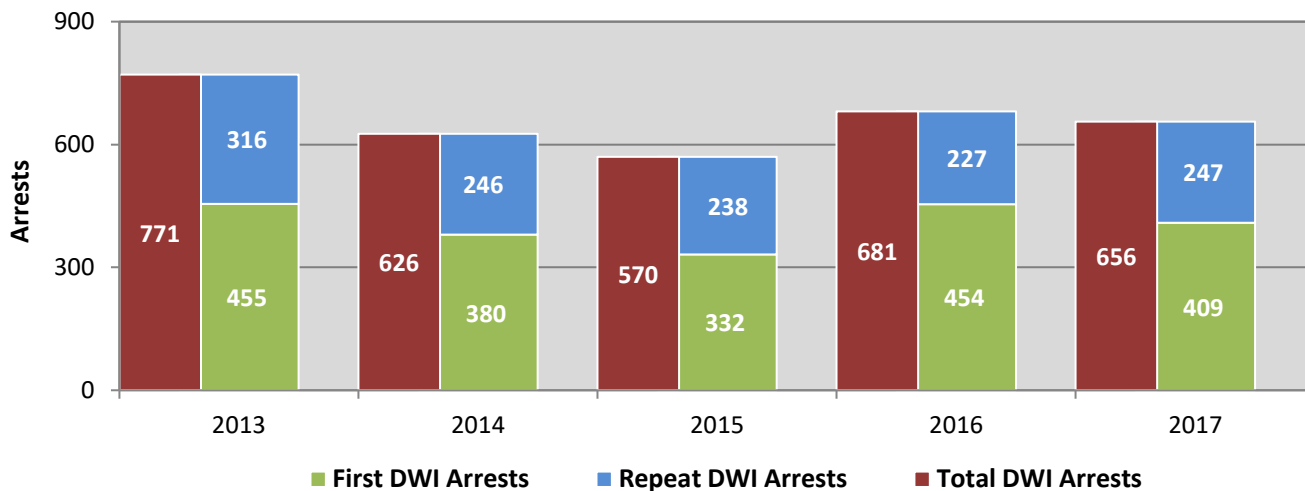
Age Groups	Pedestrians and Pedalcyclists ¹ in Crashes					5-Year Total People
	2013	2014	2015	2016	2017	
0-4	1	0	1	1	3	6
5-9	1	3	2	6	4	16
10-14	6	0	3	5	9	23
15-19	8	14	16	10	7	55
20-24	8	9	16	13	9	55
25-29	6	7	9	7	5	34
30-34	4	3	6	5	4	22
35-39	2	6	2	3	6	19
40-44	3	5	2	3	6	19
45-49	10	3	2	7	6	28
50-54	4	2	6	6	4	22
55-59	4	7	6	4	7	28
60-64	1	3	1	6	1	12
65-69	3	3	0	3	4	13
70 +	6	6	0	4	5	21
Missing Data	6	3	3	5	3	20
Total People	73	74	75	88	83	393

**Table 19: Pedestrians and Pedalcyclists in Crashes by Alcohol Involvement
and Severity of Injuries in Las Cruces, 2017**

Alcohol Involvement	Pedestrians and Pedalcyclists ¹ in Crashes					Total People
	Fatalities (Class K)	Suspected Serious Injuries (Class A)	Suspected Minor Injuries (Class B)	Possible Injuries (Class C)	No Apparent Injury (Class O)	
Total Pedalcyclists	0	2	19	7	3	31
Involved	0	0	0	0	0	0
Not Involved	0	2	19	7	3	31
Total Pedestrians	5	6	22	11	8	52
Involved	2	1	2	0	1	6
Not Involved	3	5	20	11	7	46
Total People	5	8	41	18	11	83

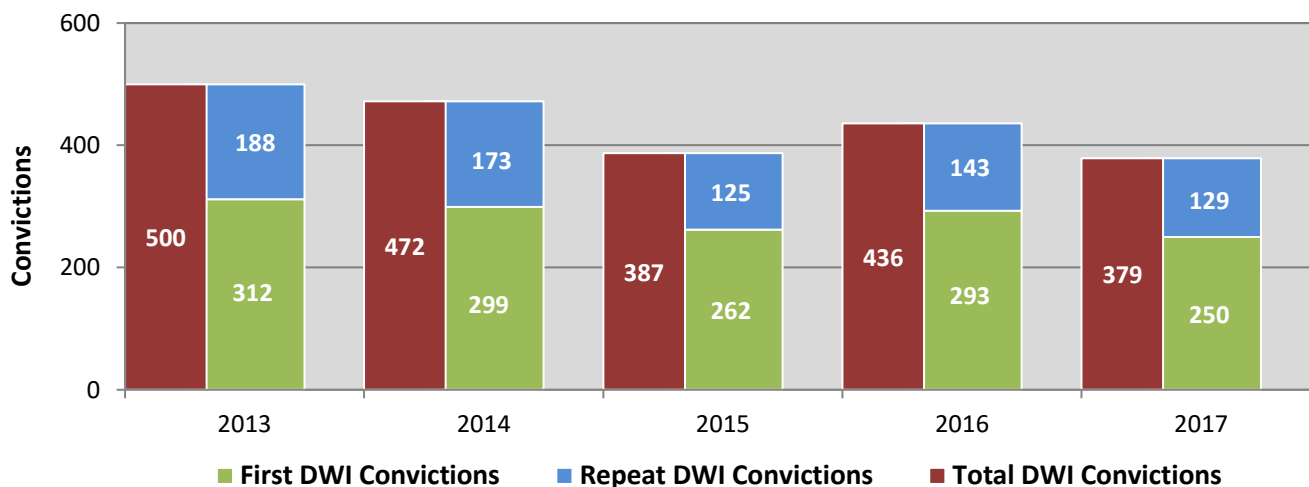
¹ Pedestrians and pedalcyclists are counted as non-motorized vehicles, when involved in a crash with a motor vehicle.

Figure 11: DWI Arrests of Las Cruces Residents Throughout the State, Showing First and Repeat DWI Arrests, 2013-2017



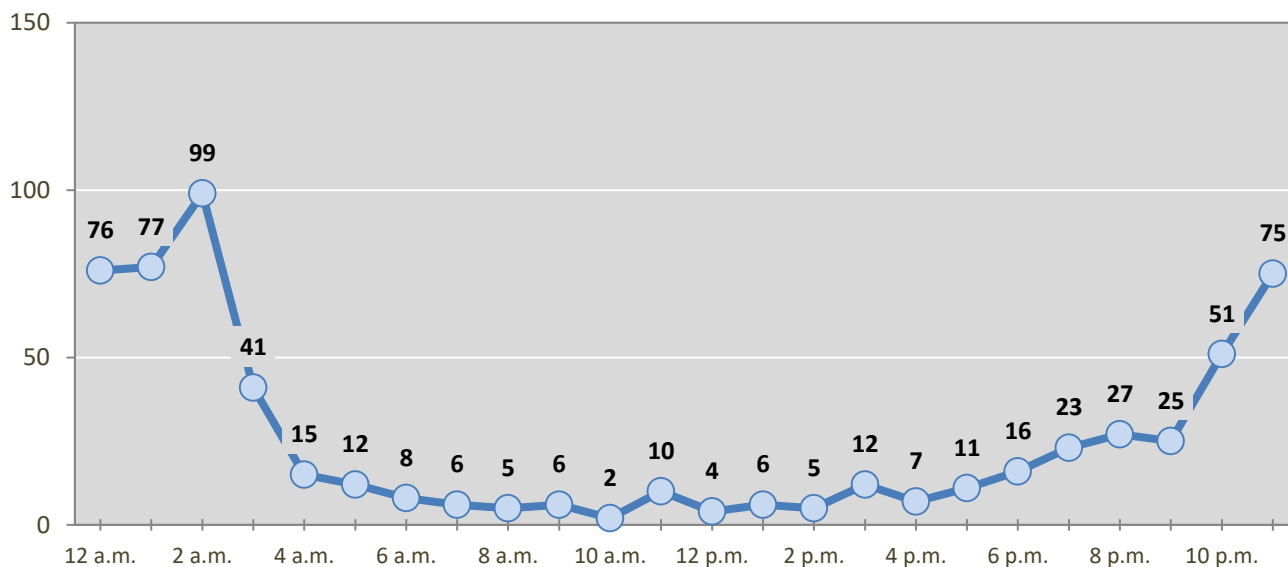
*Values are based upon the year of the arrest.

Figure 12: DWI Convictions of Las Cruces Residents Throughout the State, Showing First and Repeat DWI Convictions, 2013-2017



*Values are based upon the year of the conviction.

Figure 13: DWI Arrests by Hour of Las Cruces Residents Throughout the State, 2017



* In 2017, Las Cruces had 37 arrests for which hour data were missing.

Table 20: DWI Arrests by Day of Week of Las Cruces Residents Throughout the State, 2013-2017

Day of Week	Year					5-Year Average
	2013	2014	2015	2016	2017	
Sunday	159	142	126	138	140	141
Monday	68	47	54	67	62	60
Tuesday	61	59	39	58	60	55
Wednesday	98	85	70	62	50	73
Thursday	73	61	60	66	66	65
Friday	129	102	82	129	109	110
Saturday	183	130	139	161	169	156
Total Arrests	771	626	570	681	656	661

**Table 21: Driver First DWI Arrests by Age Group
of Las Cruces Residents Throughout the State, 2013-2017**

Age Groups	Driver First DWI Arrests ¹				
	2013	2014	2015	2016	2017
15-19	42	26	26	39	29
20-24	145	120	99	150	128
25-29	87	76	64	89	93
30-34	43	43	44	52	54
35-39	40	40	29	39	33
40-44	27	15	17	23	19
45-49	16	18	14	16	10
50-54	16	16	16	18	17
55-59	16	13	13	11	13
60-64	16	8	5	12	5
65-69	5	2	3	3	3
70 +	2	3	2	2	5
Missing Data	0	0	0	0	0
Total Drivers	455	380	332	454	409

¹ Values are based upon the year of the arrest.

**Table 22: Driver Repeat DWI Arrests by Age Group
of Las Cruces Residents Throughout the State, 2013-2017**

Age Groups	Driver Repeat DWI Arrests ¹				
	2013	2014	2015	2016	2017
15-19	2	2	3	0	2
20-24	33	32	22	27	25
25-29	73	47	39	39	49
30-34	45	39	42	47	56
35-39	45	29	35	35	33
40-44	38	27	25	23	18
45-49	32	15	23	24	27
50-54	20	20	23	14	14
55-59	14	16	17	14	17
60-64	5	10	7	0	5
65-69	7	5	1	3	1
70 +	2	4	1	1	0
Missing Data	0	0	0	0	0
Total Drivers	316	246	238	227	247

¹ Values are based upon the year of the arrest.

**Table 23: Driver First DWI Convictions by Age Group
of Las Cruces Residents Throughout the State, 2013-2017**

Age Groups	Driver First DWI Convictions ¹				
	2013	2014	2015	2016	2017
15-19	22	22	16	20	11
20-24	98	94	78	100	75
25-29	55	65	59	59	60
30-34	37	32	33	33	38
35-39	28	29	23	29	25
40-44	22	14	12	14	11
45-49	14	14	8	11	6
50-54	8	13	9	14	8
55-59	8	9	14	10	7
60-64	11	3	6	3	5
65-69	6	2	2	0	1
70 +	3	2	2	0	3
Missing Data	0	0	0	0	0
Total Drivers	312	299	262	293	250

¹Values are based upon the year of the conviction.

**Table 24: Driver Repeat DWI Convictions by Age Group
of Las Cruces Residents Throughout the State, 2013-2017**

Age Groups	Driver Repeat DWI Convictions ¹				
	2013	2014	2015	2016	2017
15-19	0	2	0	1	1
20-24	20	14	12	13	12
25-29	41	36	20	17	20
30-34	30	30	25	26	25
35-39	27	27	18	24	15
40-44	24	28	12	19	13
45-49	15	15	6	22	18
50-54	17	11	16	11	12
55-59	13	4	9	6	11
60-64	0	4	4	3	1
65-69	1	0	2	1	1
70 +	0	2	1	0	0
Missing Data	0	0	0	0	0
Total Drivers	188	173	125	143	129

¹Values are based upon the year of the conviction.

Table 25: Court Disposition of DWI Arrests for the State and of Las Cruces Residents Throughout the State, 2017

Court Disposition of DWI Arrest ¹	Las Cruces	Statewide	Percent of Statewide
Total DWI Arrests	656	10,501	6.2%
DWI Arrests Resulting in Convictions	381	5,533	6.9%
DWI Arrests Resulting in Dismissals ²	14	1,426	1.0%
DWI Arrests Awaiting Disposition	261	3,542	7.4%

¹ These are the number of DWI arrests in 2017 and whether the case resulted in a conviction or dismissal, or is still awaiting court disposition, as reported in the NM MVD Citation Tracking System (CTS) as of February 2019.

² For this table, a very small number of "not guilty" rulings may be included in the category Dismissals.

Table 26: Average Number of Days from Date of DWI Arrest to Date of Court Disposition for the State and of Las Cruces Residents Throughout the State, 2017

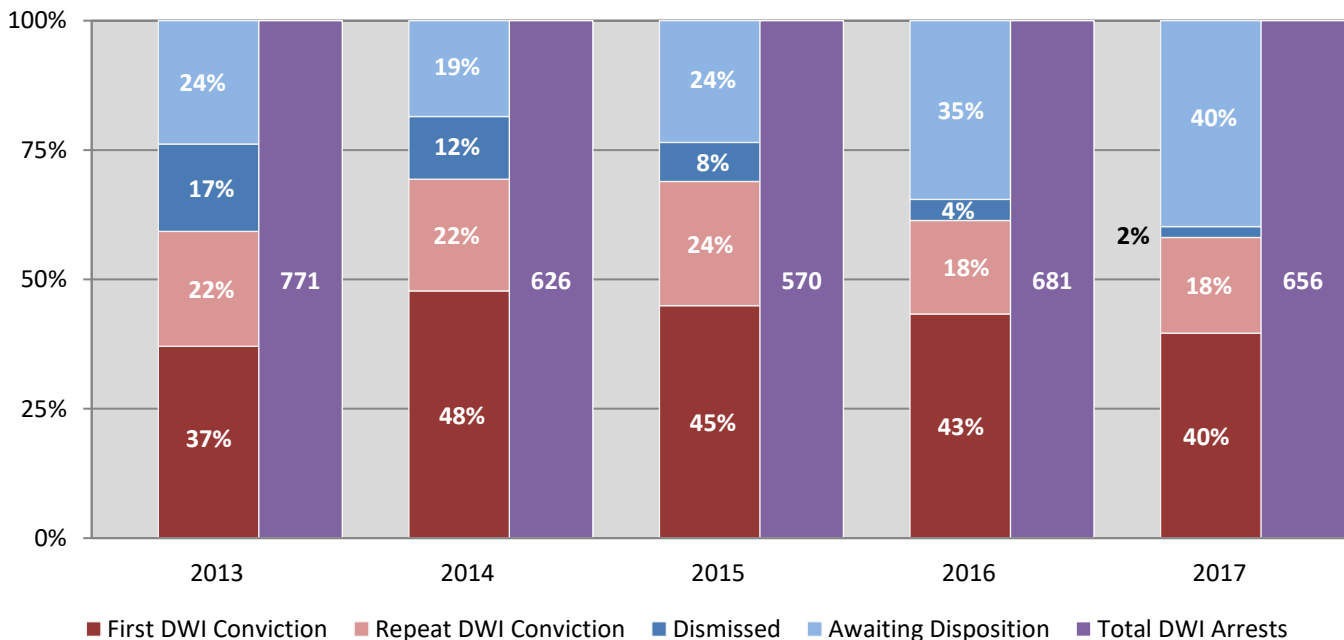
Court Disposition	Average Number of Days		Deviation from Statewide Average
	Las Cruces	Statewide	
DWI Conviction	180	166	14
DWI Dismissal	185	175	10

**Table 27: Court Disposition of DWI Arrests
of Las Cruces Residents Throughout the State, 2013-2017**

Year of DWI Arrest ¹	Court Disposition				Total DWI Arrests
	First DWI Conviction	Repeat DWI Conviction	Dismissed	Awaiting Disposition	
2013	286	171	130	184	771
2014	299	135	76	116	626
2015	256	137	43	134	570
2016	295	123	28	235	681
2017	260	121	14	261	656

¹ Values are based upon the year of the arrest.

**Figure 14: Court Dispositions by Percentage of DWI Arrests
of Las Cruces Residents Throughout the State, 2013-2017**



*Table 27 contains the values used to calculate percentages shown in Figure 14.