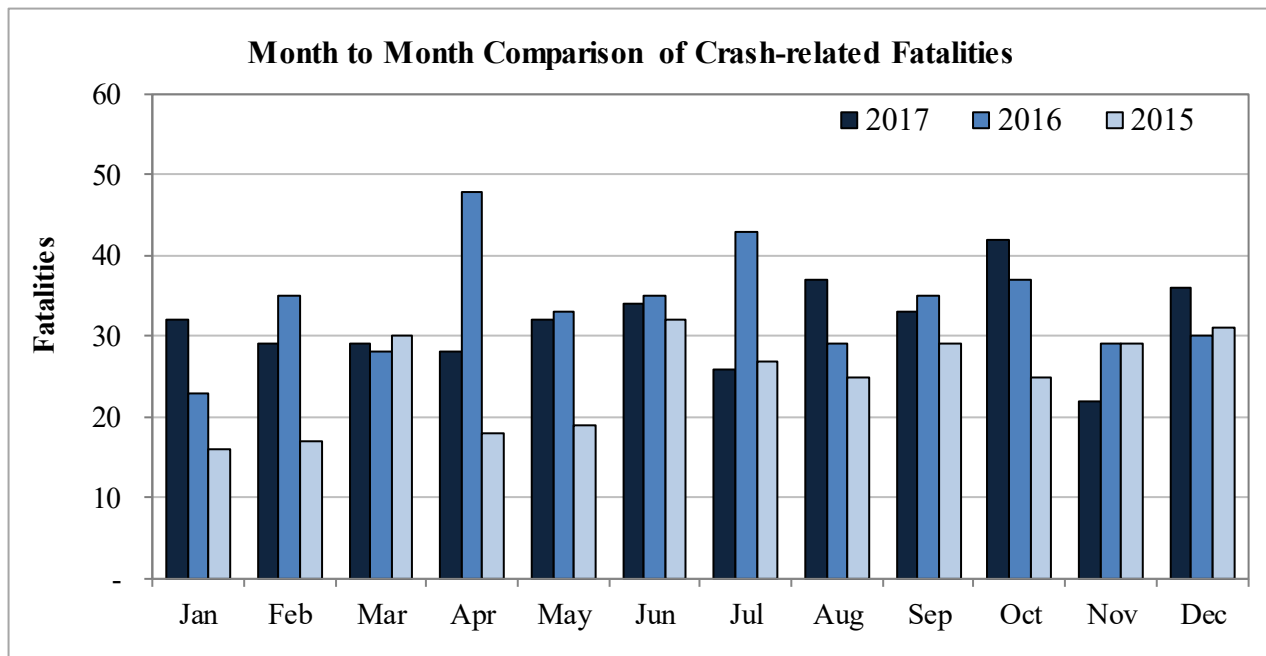


New Mexico Monthly Traffic Fatality Report, 2017

Produced for the New Mexico Department of Transportation, Traffic Safety Division, Traffic Records Bureau,
Under Contract No. 6093 by UNM Geospatial and Population Studies, Traffic Research Unit (TRU)

Fatalities by Month 2017, 2016 and 2015			
Month	2017	2016	2015
January	32	23	16
February	29	35	17
March	29	28	30
April	28	48	18
May	32	33	19
June	34	35	32
July	26	43	27
August	37	29	25
September	33	35	29
October	42	37	25
November	22	29	29
December	36	30	31
Total	380	405	298



Fatalities by Vehicle Type, 2017										
Month in 2017	Cars	Pickup Trucks	Semi Trucks	Vans, SUVs, Utility Vehicles	ATV (4W)	Motorcyclists	Pedestrians	Pedalcyclists	Vehicle Type Unknown or Other	Total Fatalities
January	10	7	2	5	-	2	6	-	-	32
February	9	2	1	4	-	6	7	-	-	29
March	8	6	-	7	-	6	2	-	-	29
April	6	4	1	7	2	3	5	-	-	28
May	10	6	1	11	-	1	3	-	-	32
June	3	9	2	9	-	2	9	-	-	34
July	4	5	1	5	-	5	5	1	-	26
August	7	4	1	9	-	7	9	-	-	37
September	10	4	-	6	-	7	6	-	-	33
October	9	7	-	6	-	7	12	1	-	42
November	3	7	-	1	1	4	6	-	-	22
December	9	9	2	3	1	3	9	-	-	36
Total	88	70	11	73	4	53	79	2	-	380

Fatalities by Alcohol Involvement ¹ , 2017				
Month	Alcohol-involved ¹	Not Alcohol-involved	Alcohol Unknown	Total Fatalities
January	15	17	-	32
February	14	15	-	29
March	12	17	-	29
April	15	13	-	28
May	13	19	-	32
June	7	27	-	34
July	9	17	-	26
August	9	28	-	37
September	12	21	-	33
October	20	22	-	42
November	9	13	-	22
December	12	24	-	36
Total	147	233	-	380

¹ All fatalities in alcohol-involved crashes.

Alcohol-involved ¹ Fatalities			
Month	2017	2016	2015
January	15	11	13
February	14	13	5
March	12	8	11
April	15	20	9
May	13	13	5
June	7	17	12
July	9	19	14
August	9	9	12
September	12	14	11
October	20	19	8
November	9	14	15
December	12	14	5
Total	147	171	120

¹ All fatalities in alcohol-involved crashes.

Fatalities Under 21, 2017	
Age	Fatalities
1	2
2	1
3	-
4	1
5	-
6	2
7	1
8	1
9	-
10	1
11	1
12	1
13	-
14	4
15	-
16	1
17	2
18	3
19	9
20	11
Total	41

Month in 2017	Total Fatalities	Alcohol-involved ¹ Fatalities, 2017			
		Motorcyclist Fatalities	Percent Motorcyclist Fatalities	Pedestrian Fatalities	Percent Pedestrian Fatalities
January	32	1	3.1%	4	12.5%
February	29	2	6.9%	5	17.2%
March	29	4	13.8%	1	3.4%
April	28	1	3.6%	2	7.1%
May	32	-	0.0%	2	6.3%
June	34	2	5.9%	2	5.9%
July	26	-	0.0%	4	15.4%
August	37	-	0.0%	5	13.5%
September	33	2	6.1%	3	9.1%
October	42	3	7.1%	10	23.8%
November	22	1	4.5%	4	18.2%
December	36	1	2.8%	-	0.0%
Total	380	17	4.5%	42	11.1%

¹ All fatalities in alcohol-involved crashes.

Alcohol-involved ¹ Fatalities, 2017		
Alcohol-involved	147	38.7%
Not Alcohol-involved	233	61.3%
Alcohol Unknown	-	0.0%
Total	380	100%

¹ All fatalities in alcohol-involved crashes.

Motorcyclist/4W Helmet Usage, 2017	
Helmet Usage	Fatalities
Yes	19
No	38
Unknown	-
Total	57

Fatalities by Vehicle ¹ Occupant Seat Belt Usage, 2017				
Restraint	Yes	No	Unknown	Total
Seat Belt	109	120	2	231

¹ Total vehicle occupant fatalities. Excludes motorcyclist, 4W/ATV, semi truck, pedestrian and pedalcyclist fatalities.

Senior (65+) Fatalities	
Year	Fatalities
2017	57
2016	60
2015	37

Fatalities by Residency and Location, 2017				
Location	New Mexico Resident	Non-Resident	Unknown Residency	Total
Rural	155	62	1	218
Urban	149	13	-	162
Unknown	-	-	-	-
Total	304	75	1	380

Month to Month Comparison of Fatalities by Alcohol Involvement, 2017, 2016 and 2015												
Month	2017 Fatalities				2016 Fatalities				2015 Fatalities			
	Alcohol-involved ¹			Total	Alcohol-involved ¹			Total	Alcohol-involved ¹			Total
	Yes	No	Unk		Yes	No	Unk		Yes	No	Unk	
January	15	17	-	32	11	12	-	23	13	3	-	16
February	14	15	-	29	13	22	-	35	5	12	-	17
March	12	17	-	29	8	20	-	28	11	19	-	30
April	15	13	-	28	20	28	-	48	9	9	-	18
May	13	19	-	32	13	20	-	33	5	14	-	19
June	7	27	-	34	17	18	-	35	12	20	-	32
July	9	17	-	26	19	24	-	43	14	13	-	27
August	9	28	-	37	9	20	-	29	12	13	-	25
September	12	21	-	33	14	21	-	35	11	18	-	29
October	20	22	-	42	19	18	-	37	8	17	-	25
November	9	13	-	22	14	15	-	29	15	14	-	29
December	12	24	-	36	14	16	-	30	5	26	-	31
Total	147	233	-	380	171	234	-	405	120	178	-	298

¹ Identifies whether the fatality resulted from an alcohol-involved crash.

Month to Month Comparison of Fatalities by Seat Belt Usage, 2017, 2016 and 2015												
Month	2017 Fatalities				2016 Fatalities				2015 Fatalities			
	Seat Belt ¹			Total ²	Seat Belt ¹			Total ²	Seat Belt ¹			Total ²
	Yes	No	Unk		Yes	No	Unk		Yes	No	Unk	
January	8	14	-	22	8	5	-	13	3	6	-	9
February	7	8	-	15	4	21	1	26	2	7	-	9
March	12	9	-	21	11	11	-	22	9	8	-	17
April	8	9	-	17	14	14	-	28	6	9	-	15
May	12	15	-	27	7	13	-	20	3	9	-	12
June	11	10	-	21	9	13	-	22	7	14	-	21
July	5	8	1	14	14	19	-	33	6	11	-	17
August	10	9	1	20	13	8	-	21	4	7	-	11
September	9	11	-	20	14	7	-	21	6	10	-	16
October	11	11	-	22	5	14	-	19	4	9	-	13
November	5	6	-	11	9	10	-	19	4	15	1	20
December	11	10	-	21	12	12	-	24	15	10	-	25
Total	109	120	2	231	120	147	1	268	69	115	1	185

¹ Identifies whether a vehicle occupant was belted (Yes), unbelted (No), or belt usage was not reported (Unk).

² Total vehicle occupant fatalities. Excludes motorcyclist, 4W/ATV, semi truck, pedestrian and pedalcyclist fatalities.

Fatalities by County and Month, 2017														
County	Jan.	Feb.	Mar.	Apr.	May	Jun.	Jul.	Aug.	Sep.	Oct.	Nov.	Dec.	2017 Total	2016 Total
Bernalillo	9	7	4	8	7	4	8	10	7	13	5	8	90	100
Catron	-	-	1	-	-	-	-	-	-	-	-	-	1	-
Chaves	-	2	-	-	-	1	-	2	1	-	-	-	6	14
Cibola	-	-	1	2	1	2	1	2	1	-	2	1	13	17
Colfax	1	-	-	-	-	-	3	-	-	-	-	-	4	5
Curry	1	-	-	-	-	-	-	1	-	2	-	-	4	7
De Baca	-	-	-	-	-	-	-	-	-	-	-	-	-	5
Doña Ana	2	3	2	1	3	2	2	2	2	3	2	5	29	24
Eddy	1	1	2	1	2	2	2	-	1	3	2	-	17	7
Grant	-	2	-	-	1	-	-	2	-	1	-	4	10	3
Guadalupe	-	1	-	1	-	2	-	4	1	-	-	-	9	12
Harding	-	-	-	-	-	-	-	-	-	-	-	-	-	2
Hidalgo	-	2	-	-	-	7	1	2	-	-	-	-	12	3
Lea	4	-	3	1	1	1	1	1	-	-	-	4	16	13
Lincoln	-	-	1	-	2	-	1	-	1	1	-	-	6	7
Los Alamos	-	-	-	-	-	-	-	-	-	-	-	-	-	-
Luna	-	1	-	-	-	-	1	-	-	-	-	-	2	12
McKinley	3	1	2	2	2	4	2	2	3	4	1	4	30	22
Mora	-	-	2	-	-	-	-	-	-	-	-	-	2	4
Otero	-	1	1	-	1	-	1	-	-	-	1	1	6	3
Quay	-	1	-	-	-	-	-	-	-	-	-	1	2	4
Rio Arriba	-	-	1	2	-	-	1	1	2	-	1	-	8	11
Roosevelt	-	-	2	1	1	-	-	-	1	-	-	1	6	5
San Juan	5	1	3	-	3	3	-	3	4	8	1	4	35	32
San Miguel	-	-	-	2	-	-	-	-	-	1	-	-	3	7
Sandoval	1	2	1	-	5	2	1	2	1	1	1	-	17	16
Santa Fe	2	1	1	5	2	1	-	1	1	1	1	-	16	23
Sierra	-	2	1	-	-	-	-	1	1	2	-	-	7	3
Socorro	-	-	-	-	-	-	-	-	1	1	-	-	2	16
Taos	-	-	-	1	-	1	1	1	3	-	1	1	9	8
Torrance	1	-	1	1	-	1	-	-	-	1	-	-	5	12
Union	-	-	-	-	-	-	-	-	-	-	1	-	1	1
Valencia	2	1	-	-	1	1	-	-	2	-	3	2	12	7
Total	32	29	29	28	32	34	26	37	33	42	22	36	380	405

Fatalities by County Relating to Alcohol, Belt Use, and Under 21 BAC, 2017							
County	Alcohol-involved Fatalities ¹		Unbelted Fatalities		Under 21 (15-20) with a BAC ²		Total Fatalities
	Count	Percent ³	Count	Percent ³	Count	Percent ³	
Bernalillo	37	41.1%	19	21.1%	1	1.1%	90
Catron	-	0.0%	1	100.0%	-	0.0%	1
Chaves	2	33.3%	3	50.0%	1	16.7%	6
Cibola	5	38.5%	7	53.8%	-	0.0%	13
Colfax	-	0.0%	-	0.0%	-	0.0%	4
Curry	1	25.0%	1	25.0%	-	0.0%	4
De Baca	-	-	-	-	-	-	-
Doña Ana	10	34.5%	9	31.0%	1	3.4%	29
Eddy	3	17.6%	10	58.8%	1	5.9%	17
Grant	4	40.0%	5	50.0%	-	0.0%	10
Guadalupe	1	11.1%	2	22.2%	1	11.1%	9
Harding	-	-	-	-	-	-	-
Hidalgo	-	0.0%	2	16.7%	-	0.0%	12
Lea	4	25.0%	7	43.8%	-	0.0%	16
Lincoln	2	33.3%	-	0.0%	-	0.0%	6
Los Alamos	-	-	-	-	-	-	-
Luna	1	50.0%	1	50.0%	-	0.0%	2
McKinley	22	73.3%	13	43.3%	-	0.0%	30
Mora	-	0.0%	-	0.0%	-	0.0%	2
Otero	4	66.7%	2	33.3%	-	0.0%	6
Quay	-	0.0%	1	50.0%	-	0.0%	2
Rio Arriba	4	50.0%	4	50.0%	-	0.0%	8
Roosevelt	1	16.7%	1	16.7%	-	0.0%	6
San Juan	19	54.3%	14	40.0%	-	0.0%	35
San Miguel	1	33.3%	-	0.0%	-	0.0%	3
Sandoval	8	47.1%	4	23.5%	-	0.0%	17
Santa Fe	9	56.3%	3	18.8%	-	0.0%	16
Sierra	2	28.6%	2	28.6%	-	0.0%	7
Socorro	-	0.0%	2	100.0%	-	0.0%	2
Taos	4	44.4%	1	11.1%	-	0.0%	9
Torrance	-	0.0%	1	20.0%	-	0.0%	5
Union	-	0.0%	1	100.0%	-	0.0%	1
Valencia	3	25.0%	4	33.3%	-	0.0%	12
Total	147	38.7%	120	31.6%	5	1.3%	380

¹ All fatalities in alcohol-involved crashes.

² Fatalities under 21 with a reported BAC (Blood Alcohol Content) above zero.

³ Percentage based on total fatalities in the county.

Fatalities by Maintenance District and Month, 2017													
District	Jan.	Feb.	Mar.	Apr.	May	Jun.	Jul.	Aug.	Sep.	Oct.	Nov.	Dec.	Total
District 1	2	10	3	1	4	9	4	7	4	7	2	9	62
District 2	6	4	9	3	7	4	5	4	4	6	3	6	61
District 3	11	10	5	8	8	6	9	11	10	14	8	10	110
District 4	1	2	2	3	-	2	3	4	1	1	1	1	21
District 5	6	2	4	9	5	6	2	6	9	7	4	5	65
District 6	6	1	6	4	8	7	3	5	5	7	4	5	61
Total	32	29	29	28	32	34	26	37	33	42	22	36	380

Fatalities by Maintenance District Relating to Alcohol, Belt Use, and Under 21 BAC, 2017							
District	Alcohol-involved Fatalities ¹		Unbelted Fatalities		Under 21 (15-20) Fatalities with a BAC ²		Total Fatalities
	Count	Percent ³	Count	Percent ³	Count	Percent ³	
District 1	17	27.4%	21	33.9%	1	1.6%	62
District 2	17	27.9%	24	39.3%	2	3.3%	61
District 3	42	38.2%	25	22.7%	1	0.9%	110
District 4	2	9.5%	4	19.0%	1	4.8%	21
District 5	31	47.7%	21	32.3%	-	0.0%	65
District 6	38	62.3%	25	41.0%	-	0.0%	61
Total	147	38.7%	120	31.6%	5	1.3%	380

¹ All fatalities in alcohol-involved crashes.

² Fatalities under 21 with a reported BAC (Blood Alcohol Content) above zero.

³ Percentage based on total fatalities in the district