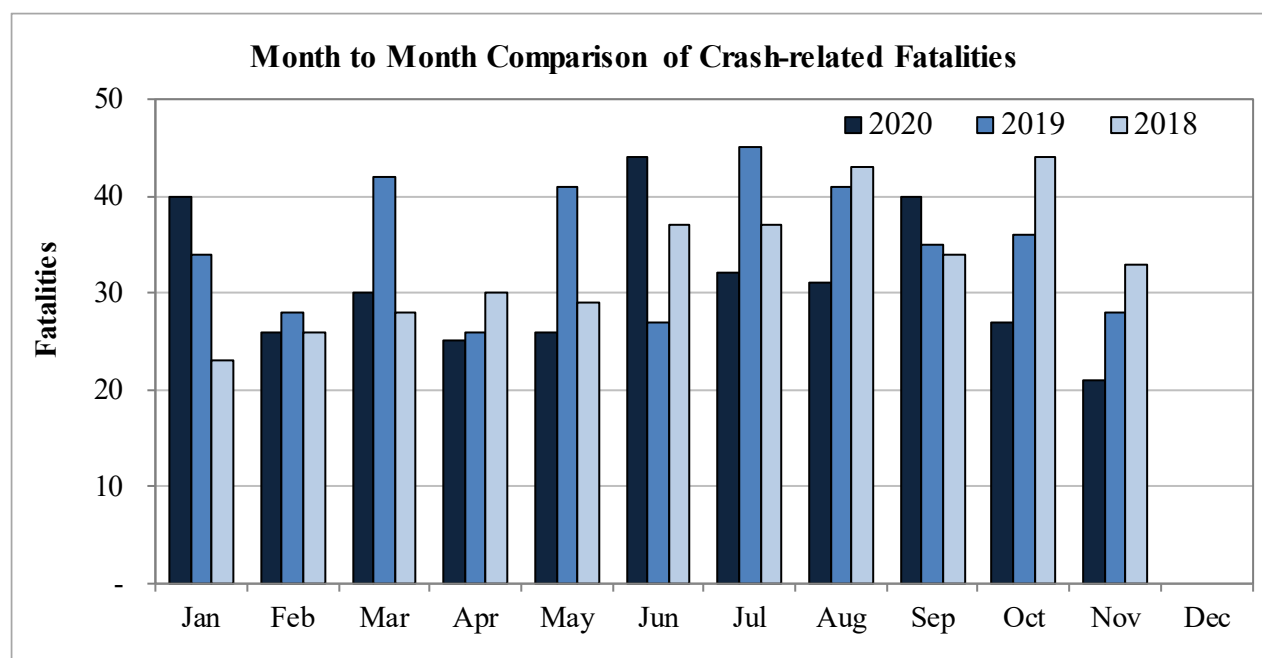


## New Mexico Monthly Traffic Fatality Report, 2020

Produced for the New Mexico Department of Transportation, Traffic Safety Division, Traffic Records Bureau,  
Under Contract No. 6093 by UNM Geospatial and Population Studies, Traffic Research Unit (TRU)

Fatalities by Month 2020, 2019, and 2018, Year to Date			
Month	2020	2019	2018
January	40	34	23
February	26	28	26
March	30	42	28
April	25	26	30
May	26	41	29
June	44	27	37
July	32	45	37
August	31	41	43
September	40	35	34
October	27	36	44
November	21	28	33
December	-	-	-
<b>Total</b>	<b>342</b>	<b>383</b>	<b>364</b>



Fatalities by Vehicle Type, 2020 to Date										
Month in 2020	Cars	Pickup Trucks	Semi Trucks, Buses	Vans, SUVs, Utility Vehicles	ATV (4W)	Motorcyclists	Pedestrians	Pedalcyclists	Vehicle Type Unknown or Other	Total Fatalities
January	8	11	-	10	-	-	11	-	-	40
February	13	3	-	2	-	3	4	1	-	26
March	10	6	-	4	-	-	10	-	-	30
April	4	-	1	5	-	4	10	1	-	25
May	8	2	-	7	-	9	-	-	-	26
June	11	8	2	8	1	6	7	1	-	44
July	8	8	-	5	3	4	2	2	-	32
August	13	4	1	6	1	2	3	1	-	31
September	6	6	1	4	3	12	7	1	-	40
October	7	5	2	1	-	5	7	-	-	27
November	6	4	1	-	-	1	9	-	-	21
December	-	-	-	-	-	-	-	-	-	-
<b>Total</b>	<b>94</b>	<b>57</b>	<b>8</b>	<b>52</b>	<b>8</b>	<b>46</b>	<b>70</b>	<b>7</b>	<b>-</b>	<b>342</b>

Fatalities by Alcohol Involvement <sup>1</sup> , 2020 to Date				
Month in 2020	Alcohol-involved <sup>1</sup>	Not Alcohol-involved	Alcohol Unknown	Total Fatalities
January	12	28	-	40
February	7	19	-	26
March	13	17	-	30
April	6	19	-	25
May	15	11	-	26
June	18	26	-	44
July	7	25	-	32
August	6	25	-	31
September	2	38	-	40
October	6	21	-	27
November	3	18	-	21
December	-	-	-	-
<b>Total</b>	<b>95</b>	<b>247</b>	<b>-</b>	<b>342</b>

<sup>1</sup> All fatalities in alcohol-involved crashes.

Alcohol-involved <sup>1</sup> Fatalities			
Month	2020	2019	2018
January	12	17	10
February	7	9	10
March	13	14	10
April	6	8	15
May	15	19	11
June	18	10	16
July	7	21	17
August	6	20	10
September	2	14	12
October	6	11	15
November	3	13	13
December	-	-	-
<b>Total</b>	<b>95</b>	<b>156</b>	<b>139</b>

<sup>1</sup> All fatalities in alcohol-involved crashes.

Fatalities Under 21, 2020 to Date	
Age	Fatalities
1	-
2	-
3	-
4	1
5	1
6	-
7	-
8	-
9	-
10	2
11	-
12	3
13	-
14	1
15	-
16	8
17	3
18	10
19	6
20	1
<b>Total</b>	<b>36</b>

Month in 2020	Total Fatalities, to Date	Alcohol-involved <sup>1</sup> Fatalities, 2020 to Date			
		Motorcyclist Fatalities	Percent Motorcyclist Fatalities	Pedestrian Fatalities	Percent Pedestrian Fatalities
January	40	-	0.0%	5	12.5%
February	26	-	0.0%	3	11.5%
March	30	-	0.0%	3	10.0%
April	25	-	0.0%	1	4.0%
May	26	4	15.4%	-	0.0%
June	44	2	4.5%	3	6.8%
July	32	2	6.3%	-	0.0%
August	31	1	3.2%	-	0.0%
September	40	-	0.0%	-	0.0%
October	27	2	7.4%	1	3.7%
November	21	-	0.0%	1	4.8%
December	-	-	-	-	-
<b>Total</b>	<b>342</b>	<b>11</b>	<b>3.2%</b>	<b>17</b>	<b>5.0%</b>

<sup>1</sup> All fatalities in alcohol-involved crashes.

Alcohol-involved <sup>1</sup> Fatalities, 2020 to Date		
Alcohol-involved	95	28%
Not Alcohol-involved	247	72%
Alcohol Unknown	-	-
<b>Total</b>	<b>342</b>	<b>100%</b>

<sup>1</sup> All fatalities in alcohol-involved crashes.

Motorcyclist/4W Helmet Usage, 2020 to Date	
Helmet Usage	Fatalities
Yes	17
No	37
Unknown	-
<b>Total</b>	<b>54</b>

Fatalities by Vehicle <sup>1</sup> Occupant Seat Belt Usage, 2020 to Date				
Restraint	Yes	No	Unknown	Total
Seat Belt	71	132	-	203

<sup>1</sup> Total vehicle occupant fatalities. Excludes motorcyclist, 4W/ATV, semi truck, pedestrian and pedalcyclist fatalities.

Senior (65+) Fatalities, Year to Date	
Year	Fatalities
2020	47
2019	52
2018	58

Fatalities by Residency and Location, 2020 to Date				
Location	New Mexico Resident	Non-Resident	Unknown Residency	Total
Rural	118	51	-	169
Urban	165	7	1	173
Unknown	-	-	-	-
<b>Total</b>	<b>283</b>	<b>58</b>	<b>1</b>	<b>342</b>

Month to Month Comparison of Fatalities by Alcohol Involvement, Year to Date												
Month	2020 Fatalities				2019 Fatalities				2018 Fatalities			
	Alcohol-involved <sup>1</sup>			Total	Alcohol-involved <sup>1</sup>			Total	Alcohol-involved <sup>1</sup>			Total
	Yes	No	Unk		Yes	No	Unk		Yes	No	Unk	
January	12	28	-	40	17	17	-	34	10	13	-	23
February	7	19	-	26	9	19	-	28	10	16	-	26
March	13	17	-	30	14	28	-	42	10	18	-	28
April	6	19	-	25	8	18	-	26	15	15	-	30
May	15	11	-	26	19	22	-	41	11	18	-	29
June	18	26	-	44	10	17	-	27	16	21	-	37
July	7	25	-	32	21	24	-	45	17	20	-	37
August	6	25	-	31	20	21	-	41	10	33	-	43
September	2	38	-	40	14	21	-	35	12	22	-	34
October	6	21	-	27	11	25	-	36	15	29	-	44
November	3	18	-	21	13	15	-	28	13	20	-	33
December	-	-	-	-	-	-	-	-	-	-	-	-
<b>Total</b>	<b>95</b>	<b>247</b>	<b>-</b>	<b>342</b>	<b>156</b>	<b>227</b>	<b>-</b>	<b>383</b>	<b>139</b>	<b>225</b>	<b>-</b>	<b>364</b>

<sup>1</sup> Identifies whether the fatality resulted from an alcohol-involved crash.

Month to Month Comparison of Fatalities by Seat Belt Usage, Year to Date												
Month	2020 Fatalities				2019 Fatalities				2018 Fatalities			
	Seat Belt <sup>1</sup>			Total <sup>2</sup>	Seat Belt <sup>1</sup>			Total <sup>2</sup>	Seat Belt <sup>1</sup>			Total <sup>2</sup>
	Yes	No	Unk		Yes	No	Unk		Yes	No	Unk	
January	12	17	-	29	8	8	-	16	6	11	-	17
February	6	12	-	18	5	15	-	20	6	12	-	18
March	8	12	-	20	9	14	-	23	7	6	-	13
April	3	6	-	9	11	7	-	18	5	12	-	17
May	8	9	-	17	10	13	-	23	5	10	-	15
June	10	17	-	27	11	5	-	16	13	12	-	25
July	9	12	-	21	15	12	-	27	8	11	-	19
August	4	19	-	23	9	21	-	30	13	11	-	24
September	3	13	-	16	10	12	-	22	8	11	-	19
October	5	8	-	13	10	7	-	17	9	17	-	26
November	3	7	-	10	6	8	-	14	12	8	-	20
December	-	-	-	-	-	-	-	-	-	-	-	-
<b>Total</b>	<b>71</b>	<b>132</b>	<b>-</b>	<b>203</b>	<b>104</b>	<b>122</b>	<b>-</b>	<b>226</b>	<b>92</b>	<b>121</b>	<b>-</b>	<b>213</b>

<sup>1</sup> Identifies whether a vehicle occupant was belted (Yes), unbelted (No), or belt usage was not reported (Unk).

<sup>2</sup> Total vehicle occupant fatalities. Excludes motorcyclist, 4W/ATV, semi truck, pedestrian and pedalcyclist fatalities.

Fatalities by County and Month, 2020 to Date														
County	Jan.	Feb.	Mar.	Apr.	May	Jun.	Jul.	Aug.	Sep.	Oct.	Nov.	Dec.	2020 Total, to Date	2019 Total, to Date
Bernalillo	10	8	6	12	8	12	13	9	8	4	6	-	96	95
Catron	-	-	-	-	-	-	-	-	-	1	-	-	1	-
Chaves	1	1	2	-	-	1	-	1	1	-	2	-	9	9
Cibola	2	1	3	-	1	3	-	-	1	-	-	-	11	16
Colfax	-	-	-	2	-	-	-	-	-	-	1	-	3	5
Curry	-	-	-	-	-	2	2	-	2	1	-	-	7	7
De Baca	-	-	-	-	-	-	-	-	-	-	-	-	-	2
Doña Ana	1	4	5	1	3	-	1	1	4	1	-	-	21	29
Eddy	3	2	1	1	-	-	-	1	2	-	-	-	10	13
Grant	2	-	1	-	1	2	1	-	1	-	-	-	8	2
Guadalupe	-	-	-	-	-	1	-	-	1	-	-	-	2	10
Harding	-	-	-	-	-	-	-	-	-	-	-	-	-	-
Hidalgo	-	-	-	-	-	-	-	1	-	-	1	-	2	8
Lea	2	1	2	1	-	-	-	1	3	-	1	-	11	25
Lincoln	-	-	-	-	1	-	1	-	1	-	-	-	3	4
Los Alamos	-	-	-	-	-	-	-	-	-	1	-	-	1	-
Luna	-	-	1	2	-	1	2	-	-	-	-	-	6	11
McKinley	2	2	1	-	4	3	1	-	3	2	2	-	20	25
Mora	1	-	-	-	-	-	-	-	-	-	-	-	1	5
Otero	-	-	-	1	-	1	1	-	1	-	-	-	4	9
Quay	-	-	-	-	-	-	-	-	-	2	-	-	2	2
Rio Arriba	-	-	-	-	2	5	2	4	1	1	-	-	15	11
Roosevelt	-	-	-	-	-	-	-	-	-	-	-	-	-	3
San Juan	2	2	3	2	1	3	1	2	2	2	1	-	21	30
San Miguel	2	1	2	-	1	1	-	1	-	1	-	-	9	3
Sandoval	3	-	-	-	1	1	-	1	1	2	1	-	10	13
Santa Fe	6	3	2	1	-	2	4	3	4	4	1	-	30	15
Sierra	-	-	-	-	-	-	1	-	-	-	-	-	1	1
Socorro	2	-	-	-	-	2	-	3	-	2	2	-	11	6
Taos	-	-	1	1	1	4	1	1	1	-	2	-	12	5
Torrance	-	1	-	-	-	-	1	1	1	1	-	-	5	8
Union	1	-	-	-	-	-	-	-	-	1	-	-	2	1
Valencia	-	-	-	1	2	-	-	1	2	1	1	-	8	10
<b>Total</b>	<b>40</b>	<b>26</b>	<b>30</b>	<b>25</b>	<b>26</b>	<b>44</b>	<b>32</b>	<b>31</b>	<b>40</b>	<b>27</b>	<b>21</b>	<b>-</b>	<b>342</b>	<b>383</b>

Fatalities by County Relating to Alcohol, Belt Use, and Under 21 BAC, 2020 to Date							
County	Alcohol-involved Fatalities <sup>1</sup>		Unbelted Fatalities		Under 21 (15-20) with a BAC <sup>2</sup>		Total Fatalities
	Count	Percent <sup>3</sup>	Count	Percent <sup>3</sup>	Count	Percent <sup>3</sup>	
Bernalillo	26	27.1%	35	36.5%	3	3.1%	96
Catron	-	0.0%	1	100.0%	-	0.0%	1
Chaves	2	22.2%	2	22.2%	-	0.0%	9
Cibola	2	18.2%	4	36.4%	-	0.0%	11
Colfax	1	33.3%	2	66.7%	-	0.0%	3
Curry	1	14.3%	3	42.9%	-	0.0%	7
De Baca	-	-	-	-	-	-	-
Doña Ana	7	33.3%	8	38.1%	-	0.0%	21
Eddy	-	0.0%	5	50.0%	-	0.0%	10
Grant	1	12.5%	3	37.5%	-	0.0%	8
Guadalupe	1	50.0%	1	50.0%	-	0.0%	2
Harding	-	-	-	-	-	-	-
Hidalgo	-	0.0%	-	0.0%	-	0.0%	2
Lea	1	9.1%	5	45.5%	-	0.0%	11
Lincoln	1	33.3%	2	66.7%	-	0.0%	3
Los Alamos	-	0.0%	1	100.0%	-	0.0%	1
Luna	2	33.3%	3	50.0%	-	0.0%	6
McKinley	8	40.0%	9	45.0%	-	0.0%	20
Mora	-	0.0%	1	100.0%	-	0.0%	1
Otero	3	75.0%	-	0.0%	-	0.0%	4
Quay	-	0.0%	-	0.0%	-	0.0%	2
Rio Arriba	3	20.0%	8	53.3%	-	0.0%	15
Roosevelt	-	-	-	-	-	-	-
San Juan	13	61.9%	4	19.0%	-	0.0%	21
San Miguel	3	33.3%	5	55.6%	-	0.0%	9
Sandoval	1	10.0%	2	20.0%	1	10.0%	10
Santa Fe	10	33.3%	10	33.3%	1	3.3%	30
Sierra	-	0.0%	1	100.0%	-	0.0%	1
Socorro	2	18.2%	5	45.5%	-	0.0%	11
Taos	6	50.0%	5	41.7%	-	0.0%	12
Torrance	-	0.0%	2	40.0%	-	0.0%	5
Union	1	50.0%	1	50.0%	1	50.0%	2
Valencia	-	0.0%	4	50.0%	-	0.0%	8
<b>Total</b>	<b>95</b>	<b>27.8%</b>	<b>132</b>	<b>38.6%</b>	<b>6</b>	<b>1.8%</b>	<b>342</b>

<sup>1</sup> All fatalities in alcohol-involved crashes.

<sup>2</sup> Fatalities under 21 with a reported BAC (Blood Alcohol Content) above zero.

<sup>3</sup> Percentage based on total fatalities in the county.

Fatalities by Maintenance District and Month, 2020 to Date													
District	Jan.	Feb.	Mar.	Apr.	May	Jun.	Jul.	Aug.	Sep.	Oct.	Nov.	Dec.	Total
District 1	5	4	7	3	4	5	5	5	5	3	3	-	49
District 2	6	4	5	3	1	4	4	3	10	1	3	-	44
District 3	12	8	6	13	11	13	13	10	11	6	7	-	110
District 4	4	1	2	2	1	2	-	1	1	4	1	-	19
District 5	8	6	6	4	4	14	9	11	9	10	4	-	85
District 6	5	3	4	-	5	6	1	1	4	3	3	-	35
<b>Total</b>	<b>40</b>	<b>26</b>	<b>30</b>	<b>25</b>	<b>26</b>	<b>44</b>	<b>32</b>	<b>31</b>	<b>40</b>	<b>27</b>	<b>21</b>	<b>-</b>	<b>342</b>

Fatalities by Maintenance District Relating to Alcohol, Belt Use, and Under 21 BAC, 2020 to Date							
District	Alcohol-involved Fatalities <sup>1</sup>		Unbelted Fatalities		Under 21 (15-20) Fatalities with a BAC <sup>2</sup>		Total Fatalities
	Count	Percent <sup>3</sup>	Count	Percent <sup>3</sup>	Count	Percent <sup>3</sup>	
District 1	12	24.5%	20	40.8%	-	0.0%	49
District 2	8	18.2%	17	38.6%	-	0.0%	44
District 3	27	24.5%	40	36.4%	4	3.6%	110
District 4	6	31.6%	10	52.6%	1	5.3%	19
District 5	32	37.6%	30	35.3%	1	1.2%	85
District 6	10	28.6%	15	42.9%	-	0.0%	35
<b>Total</b>	<b>95</b>	<b>27.8%</b>	<b>132</b>	<b>38.6%</b>	<b>6</b>	<b>1.8%</b>	<b>342</b>

<sup>1</sup> All fatalities in alcohol-involved crashes.

<sup>2</sup> Fatalities under 21 with a reported BAC (Blood Alcohol Content) above zero.

<sup>3</sup> Percentage based on total fatalities in the district