

New Mexico Motorcycle Crash Statistics, 2014 – 2018



New Mexico Department of Transportation

Traffic Safety Division
Traffic Records Bureau
P.O. Box 1149
Santa Fe, New Mexico 87504-1149
(505) 827-0427
<http://dot.state.nm.us/>

Produced for the New Mexico Department of Transportation,
Traffic Safety Division, Traffic Records Bureau, under Contract C06100
Produced by the University of New Mexico Geospatial and Population Studies,
Traffic Research Unit
<https://gps.unm.edu/tru>

Distributed in compliance with New Mexico Statute 66-7-214
as a reference source regarding New Mexico traffic crashes

Source:

Crash data are from the NMDOT Uniform Crash Reports (UCR), submitted by law enforcement agencies in the state, for any incident on a public roadway involving one or more motor vehicles that resulted in death, injury, or at least \$500 in property damage. These reports are processed by the NMDOT Traffic Records Program, and analyzed by the University of New Mexico, Geospatial and Population Studies (GPS), Traffic Research Unit (TRU).

The NMDOT Crash Database, as of June 30, 2020, was used for this report.

Disclaimer:

NMDOT crash data is protected by the federal mandate Title 23 U.S.C. Section 409, which forbids the discovery and admission into evidence of reports, data, or other information compiled or collected for activities required pursuant to Federal highway safety programs, or for the purpose of developing any highway safety construction improvement project, which may be implemented utilizing federal-aid highway funds, in tort litigation arising from occurrences at the locations addressed in such documents or data.

For the purposes of this report, data are compiled by the University of New Mexico, Geospatial and Population Studies, Traffic Research Unit (TRU), on behalf of the New Mexico Department of Transportation (NMDOT). Data in this report may differ from that in other data sources, such as the Federal Fatality Analysis Reporting System (FARS), due to the timing of publications and rules for how data are compiled and maintained in Federal vs. State databases. If you have questions regarding this report, please contact the Traffic Safety Division at 505-827-0427.

Executive Summary

Overall Patterns: Each of the past five years has seen about 1,100 crashes involving motorcycles or ATVS, about 2.5 percent of total crashes (Table 1). Deaths involving motorcycles or ATVs have ranged from 42 to 63, about 14 percent of total deaths in traffic crashes (Table 1).

Injuries: Just over half, 53 percent, of all people in motorcycle crashes have no apparent injuries (Class 0) (Table 2).

Timing: Motorcycle crashes are more frequent in warmer months, with at least 10 percent of crashes taking place in each month from May through September (Table 3). On the other hand, January and February each have only 4 percent of crashes (Table 3). More motorcycle crashes take place on Saturdays, which have 19 percent of crashes (Table 3). The late afternoon, from 4 p.m. to 6 p.m., sees more than 9 percent of motorcycle crashes each hour (Table 4). Motorcycle crashes are at a lull from 1 a.m. through 5 a.m., with less than 1 percent of crashes each hour (Table 4).

Alcohol and Drug Involvement: Of people on motorcycles in crashes in which the driver was involved with alcohol, 20 percent died (Table 5). The rate was worse with drugs. Of people on motorcycles in crashes in which the driver was involved with drugs, 64 percent died (Table 5).

Demographics: There were more than 10 times the number of motorcycles driven in crashes by males (4,720) than females (329) (Table 12). Ages 20 – 34 together had 37 percent of all motorcycle drivers in crashes.

Hit-and-Run Crashes: Among motorcycles in crashes, 10 percent were in hit-and-run crashes (Table 13).

Environmental Conditions: More than half, 56 percent, of people on motorcycles in crashes were in crashes in which there were no traffic control devices (Table 17).

Driver Action: Three-fourths of people on motorcycles in crashes were in crashes in which the motorcycle was going straight (Table 21).

Location: Albuquerque had 39 percent of people on motorcycles in crashes (Table 23). Bernalillo County had 41 percent of people on motorcycles in crashes (Table 24).

Missing Data: There is a large amount of missing data about road design dividers, 30 percent (Table 19); and road design, 23 percent (Table 20).

Table of Contents

1. Crashes and Fatalities Involving Motorcycles or ATVs, 2014 – 2018.....	8
2. People in Motorcycle Crashes by Severity of Injuries, 2014 – 2018.....	9
3. Crashes of Motorcycles or ATVs by Month and Day, 2014 – 2018.....	10
4. Crashes of Motorcycles and ATVs by Hour and Day of Week, 2013 – 2017.....	11
5. Motorcyclist Fatalities by Involvement of Motorcycle Driver with Alcohol or Drugs, 2014 – 2018..	12
6. People in Crashes on Motorcycles with Motorcycle Drivers Involved with Alcohol, by Severity of Injury, 2014 – 2018	12
7. People in Crashes on Motorcycles with Motorcycle Drivers Involved with Drugs, by Severity of Injury, 2014 – 2018	12
8. People in Crashes on Motorcycles with Motorcycle Drivers Involved with Alcohol or Drugs, by Driver Age, 2014 – 2018.....	13
9. People in Crashes on Motorcycles with Motorcycle Drivers Involved with Alcohol or Drugs by Driver Age and Driver Sex, 2014 – 2018	13
10. Motorcyclists in Alcohol-involved Crashes, 2014 – 2018	14
11. Motorcyclists in Drug-involved Crashes, 2014 – 2018.....	14
12. Motorcycles Drivers in Crashes, by Age Group and Sex, 2014 – 2018.....	15
13. Motorcycles in Crashes by Hit-and-Run, 2014 – 2018.....	16
14. People on Motorcycles in Crashes by Driver Injury Severity and Light Condition, 2014 – 2018...	16
15. People on Motorcycles in Crashes by Driver Injury Severity and Road Condition, 2014 – 2018...	17
16. People on Motorcycles in Crashes by Driver Injury Severity of Injuries and Road Surface, 2014 – 2018	17
17. People on Motorcycles in Crashes by Driver Injury Severity and Traffic Control Device, 2014 – 2018	17
18. People on Motorcycles in Crashes by Driver Injury Severity and Road Design Lanes, 2014 – 2018 .	18
19. People on Motorcycles in Crashes by Driver Injury Severity and Road Design Dividers, 2014 – 2018	18
20. People on Motorcycles in Crashes by Driver Injury Severity and Road Design, 2014 – 2018	18
21. People on Motorcycles in Crashes by Driver Injury Severity and Motorcycle Driver Action, 2014 – 2018	19
22. People on Motorcycles in Crashes by Driver Injury Severity and Agency, 2014 – 2018.....	19
23. People on Motorcycles in Crashes by Driver Injury Severity and City, 2014 – 2018	20
24. People on Motorcycles in Crashes by Driver Injury Severity and County, 2014 – 2018	21

Definitions

Alcohol-involved Crash – A crash for which the Uniform Crash Report (UCR) indicated that 1) a DWI citation was issued, 2) alcohol was a contributing factor, or 3) a person in control of a vehicle (including a pedestrian or pedalcyclist) was suspected of being under the influence of alcohol. Alcohol-involved crashes involve one or more alcohol-involved drivers.

Alcohol-involved Driver – A person in control of a motor vehicle who was cited for DWI or indicated on the Uniform Crash Report as either suspected or determined by testing to be under the influence of alcohol. A single alcohol-involved crash can involve multiple alcohol-involved drivers.

Crash – A reported incident on a public roadway involving one or more motor vehicles that resulted in death, personal injury, or at least \$500 in property damage. Crashes on private property (such as a parking lot) are not included.

Contributing Factor – Circumstance that helped bring about the crash. Reported in the Apparent Contributing Factors section of the crash report. Multiple contributing factors may be reported for any vehicle in a crash.

Driver – A person in control of a motor vehicle. Pedestrians and pedalcyclists are classified as drivers of non-motorized vehicles.

Drug-involved Crash – A crash for which the Uniform Crash Report indicated that 1) a DWI citation was issued, 2) a drug was a contributing factor, or 3) a person in control of a vehicle was suspected of being under the influence of drugs. Drug-involved crashes involve one or more drug-involved drivers.

Drug-involved Driver – A person in control of a motor vehicle who was cited for DWI or indicated on the Uniform Crash Report as either suspected or determined by testing to be under the influence of drugs. A single drug-involved crash can involve multiple drug-involved drivers.

Fatal Crash – A crash in which at least one person was killed. Note that more than one person can be killed in a single fatal crash.

Fatalities – The number of people killed in a crash. The terms *killed* and *deaths* are synonymous with *fatalities*. A fatality is crash related if it occurs at the time of the crash or if the person(s) involved in the crash dies within 30 days.

Injuries – The number of people injured in a crash, in contrast to the number of crashes in which people were injured. This includes Suspected Serious Injuries (Class A), Suspected Minor Injuries (Class B) and Possible Injuries (Class C). Counts consist of people injured but not killed.

Injury Crash – A reported crash in which at least one person was injured. Injury crashes involve at least one Suspected Serious Injury (Class A), Suspected Minor Injury (Class B) or Possible Injury (Class C). Fatal crashes are not included in this category.

Missing Data – An indication that the applicable field on the Uniform Crash Report form was left blank or contained an invalid code. Starting with crashes that occurred in 2012, improvements in the identification of missing data in the NMDOT crash database led to an increase in the reported amount of missing data.

Motorcycle – A motor vehicle having a seat or saddle and designed to travel on not more than three wheels.

Motorcyclist – A person riding a motorcycle.

Motorcycle Crash – A crash involves one or more motorcycles.

Motorcyclist in Alcohol- or Drug-involved Crash – A motorcyclist in a crash for which the Uniform Crash Report indicated that 1) a DWI citation was issued, 2) alcohol was a contributing factor, or 3) a person in control of a vehicle (including a pedestrian or pedalcyclist) was suspected of being under the influence of alcohol or drugs. Alcohol or drug-involved crashes involve one or more alcohol or drug-involved drivers.

Motorcyclist Involved with Alcohol or Drugs – A motorcyclist who was cited for DWI or indicated on the Uniform Crash Report as either suspected or determined by testing to be under the influence of alcohol or drugs. A single alcohol or drug-involved crash can involve multiple alcohol or drug-involved drivers.

Possible Injury – An injury reported or claimed which is not a fatal, Suspected Serious or Suspected Minor Injury. Possible injuries are those which are reported by the person or are indicated by his or her behavior, but no wounds or injuries are readily evident (a.k.a. Class C Injury, Complaint of Injury, or Non-visible Injury). Examples include momentary loss of consciousness, claim of injury, limping, or complaint of pain or nausea.

Property Damage Only Crash (PDO) – A reported crash on a public road that did not involve injuries or fatalities but resulted in more than \$500 in property damage only (a.k.a. a Class O crash).

Severity of Injury – The degree of injury to a person in a crash as described by the KABCO scale: *K* is for Killed, *ABC* indicate injuries (*A*=Suspected Serious Injury, *B*=Suspected Minor Injury, *C*=Possible Injury), and *O* indicates No Apparent Injuries (property damage only).

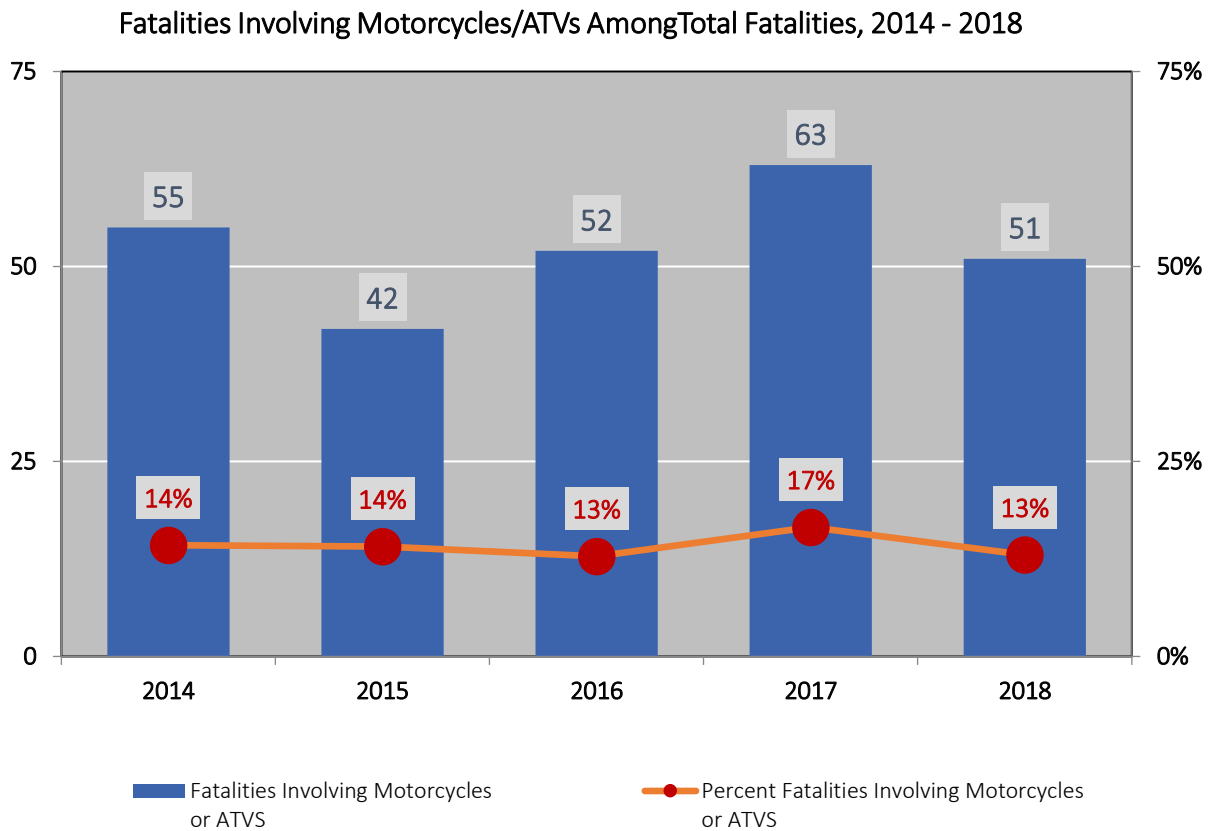
Suspected Minor Injury – A visible but not serious injury, such as abrasions, bruises and minor lacerations, as observed by the officer at the scene of the crash. Also known as a Class B Injury or a Visible Injury.

Suspected Serious Injury – An injury, other than a fatal injury, in which the person was carried from the scene of the crash or in which the injured person was unable to walk, drive or perform normal activities he or she was capable of performing before the injury occurred, as observed by the officer at the scene of the crash. Also known as a Class A Injury or an Incapacitating Injury.

Vehicle – A motorized car, truck, bus, van, or motorcycle (mechanically or electrically powered) for carrying or transporting persons or things. Pedestrians and pedalcyclists are counted as nonmotorized vehicles when in a crash with a motor vehicle.

1. Crashes and Fatalities Involving Motorcycles or ATVs, 2014 - 2018

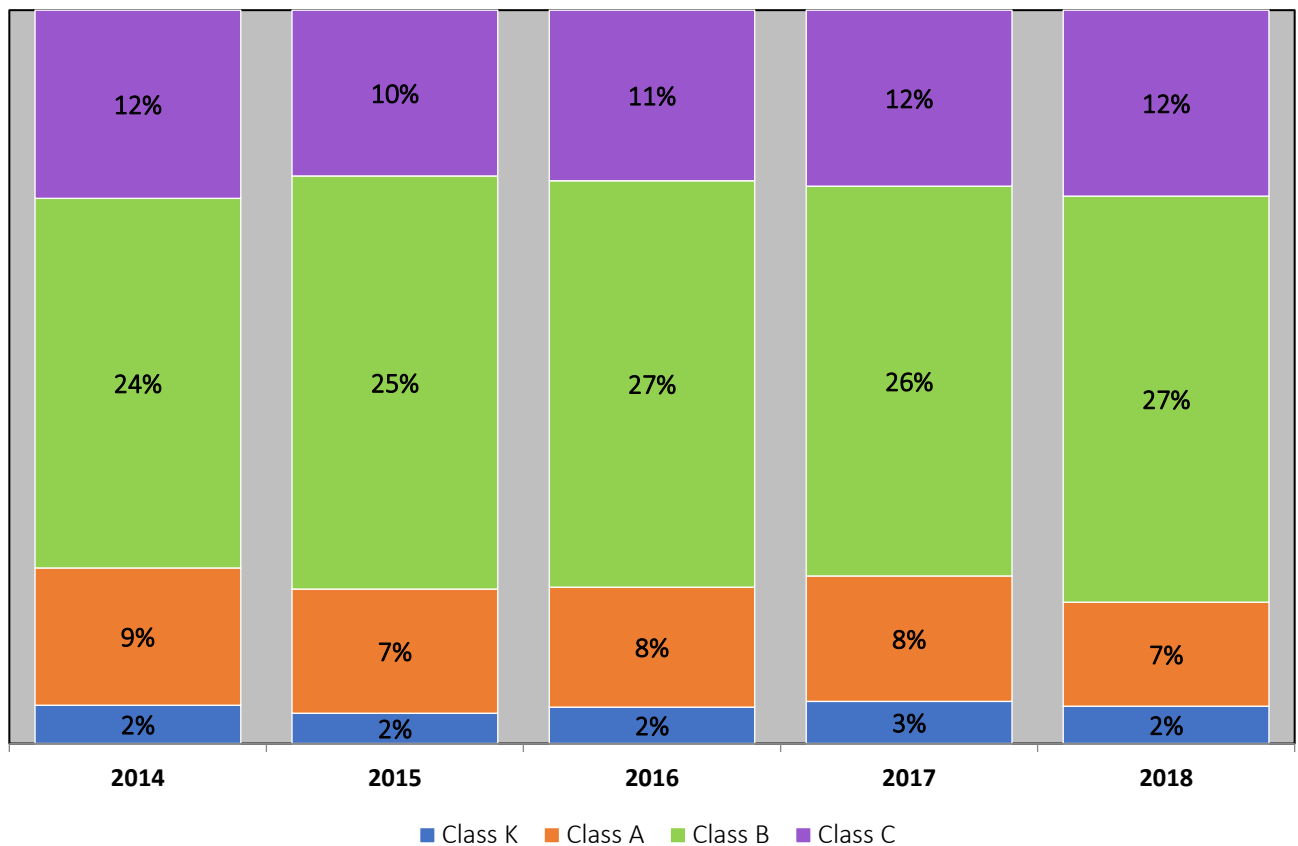
Year	Crashes			Fatalities		
	Motorcycle-involved Crashes	Total Crashes	Percent Motorcycle-involved	Motorcycle-involved Fatalities	Total Fatalities	Percent Motorcycle-involved
2014	1,134	40,690	2.8%	55	386	14%
2015	1,131	45,308	2.5%	42	298	14%
2016	1,118	45,071	2.5%	52	405	13%
2017	1,144	45,906	2.5%	63	380	17%
2018	1,064	46,786	2.3%	51	392	13%
Total	5,591	223,761	2.5%	263	1,861	14%



2. People in Motorcycle Crashes by Severity of Injuries, 2014 - 2018

Year	Fatalities (Class K)		Suspected Serious Injuries (Class A)		Suspected Minor Injuries (Class B)		Possible Injuries (Class C)		No Apparent Injuries (Class O)		Total	
	Count	Percent	Count	Percent	Count	Percent	Count	Percent	Count	Percent	Count	Percent
2014	55	2%	197	9%	530	24%	270	12%	1,155	52%	2,207	20%
2015	42	2%	171	7%	570	25%	229	10%	1,276	56%	2,288	21%
2016	52	2%	171	8%	579	27%	243	11%	1,126	52%	2,171	20%
2017	63	3%	187	8%	582	26%	263	12%	1,183	52%	2,278	21%
2018	51	2%	143	7%	557	27%	255	12%	1,082	52%	2,088	19%
Total	Count	263	869	2,818	1,260	5,822	11,032	100%				
	Percent	2%	8%	26%	11%	53%	100%					

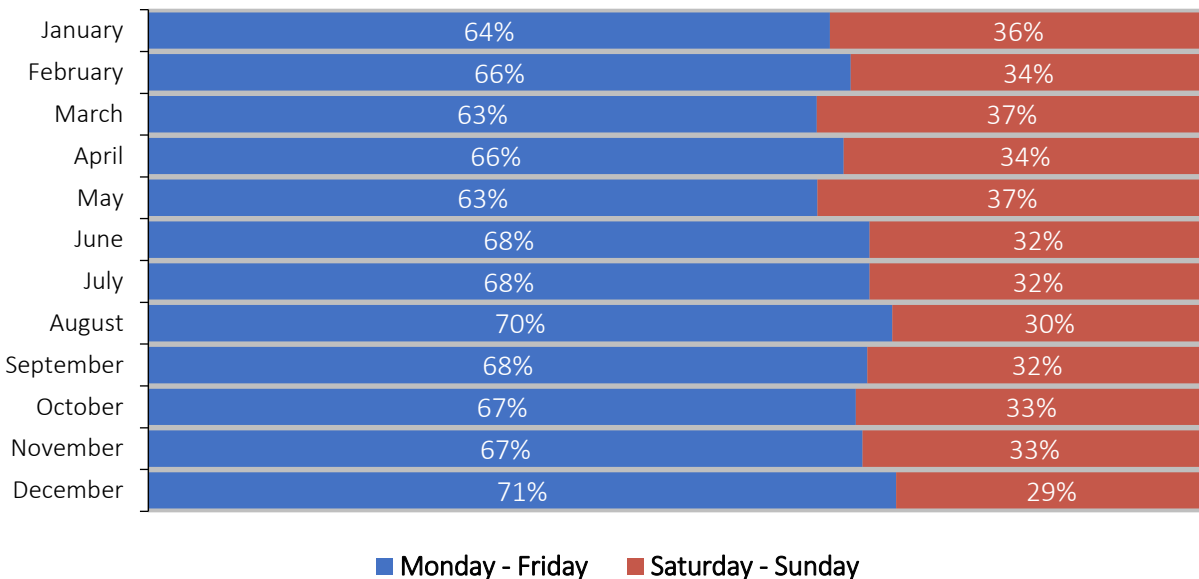
Percent of Injury Severity to People in Motorcycle Crashes, 2014 -2018



3. Crashes of Motorcycles or ATVs by Month and Day, 2014 - 2018

Month	Monday	Tuesday	Wednesday	Thursday	Friday	Saturday	Sunday	Total		
								Count	Percent	
January	28	33	26	23	33	47	32	222	4%	
February	32	31	60	31	57	62	45	318	6%	
March	59	48	61	66	85	107	79	505	9%	
April	40	55	69	70	59	80	73	446	8%	
May	74	69	80	76	93	127	101	620	11%	
June	67	63	82	84	87	100	79	562	10%	
July	75	92	81	72	95	109	85	609	11%	
August	68	73	101	80	92	104	71	589	11%	
September	94	68	56	90	116	124	76	624	11%	
October	70	61	54	84	80	93	80	522	9%	
November	50	52	45	47	53	59	60	366	7%	
December	23	18	30	32	44	28	33	208	4%	
Total	Count	680	663	745	755	894	1,040	814	5,591	100%
	Percent	12%	12%	13%	14%	16%	19%	15%	100%	

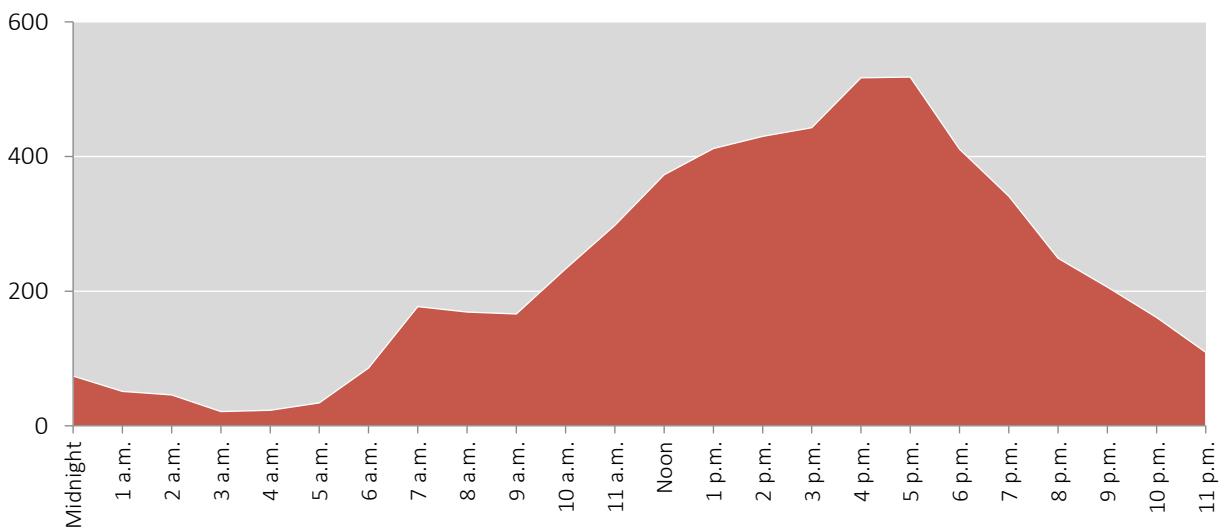
Weekday and Weekend Crashes of Motorcycles and ATVs, 2014 - 2018



4. Crashes of Motorcycles and ATVs by Hour and Day of Week, 2013 - 2017

Hour	Monday	Tuesday	Wednesday	Thursday	Friday	Saturday	Sunday	Total		
								Count	Percent	
Midnight	12	12	3	6	5	13	23	74	1.3%	
1 a.m.	4	6	4	4	7	19	7	51	0.9%	
2 a.m.	1	4	3	5	12	15	6	46	0.8%	
3 a.m.	2	3	2	2	0	6	6	21	0.4%	
4 a.m.	1	3	4	1	3	6	5	23	0.4%	
5 a.m.	11	7	3	7	2	2	2	34	0.6%	
6 a.m.	11	16	20	14	20	3	2	86	1.5%	
7 a.m.	27	25	35	35	32	14	9	177	3.2%	
8 a.m.	34	22	22	31	24	22	14	169	3.0%	
9 a.m.	28	17	14	23	21	41	22	166	3.0%	
10 a.m.	24	29	24	31	33	62	30	233	4.2%	
11 a.m.	39	29	42	38	48	58	44	298	5.3%	
Noon	37	32	56	53	66	71	58	373	6.7%	
1 p.m.	52	54	56	41	63	87	59	412	7.4%	
2 p.m.	50	43	47	50	62	100	78	430	7.7%	
3 p.m.	60	54	68	48	61	79	73	443	7.9%	
4 p.m.	62	68	51	89	70	86	91	517	9.2%	
5 p.m.	67	65	67	79	90	86	64	518	9.3%	
6 p.m.	39	43	68	53	75	74	59	411	7.4%	
7 p.m.	36	48	46	45	62	48	56	341	6.1%	
8 p.m.	29	26	42	36	44	38	34	249	4.5%	
9 p.m.	25	21	29	25	33	42	31	206	3.7%	
10 p.m.	13	20	16	24	35	29	24	161	2.9%	
11 p.m.	10	8	15	9	25	33	9	109	1.9%	
Invalid Code	5	7	5	4	1	4	7	33	0.6%	
Missing Data	1	1	3	2	0	2	1	10	0.2%	
Total	Count	680	663	745	755	894	1,040	814	5,591	100%
	Percent	12%	12%	13%	14%	16%	19%	15%		100%

Crashes of Motorcycles and ATVs by Hour, 2014 - 2018



5. Motorcyclist Fatalities by Involvement of Motorcycle Driver with Alcohol or Drugs, 2014 - 2018

Year	Alcohol-involved			Drug-involved		
	People Killed on Motorcycles on Which the Driver Was Involved with Alcohol	Motorcyclists on Motorcycles on Which the Driver Was Involved with Alcohol	Percent Killed	People Killed on Motorcycles on Which the Driver Was Involved with Drugs	Motorcyclists on Motorcycle on Which the Driver Was Involved with Drugs	Percent Killed
2014	21	83	25%	6	15	40%
2015	6	70	9%	3	5	60%
2016	13	68	19%	10	15	67%
2017	16	76	21%	13	17	76%
2018	16	60	27%	13	18	72%
Total	72	357	20%	45	70	64%

6. People in Crashes on Motorcycles with Motorcycle Drivers Involved with Alcohol, by Severity of Injury, 2014 - 2018

Year	Fatalities (Class K)		Suspected Serious Injuries (Class A)		Suspected Minor Injuries (Class B)		Possible Injuries (Class C)		No Apparent Injuries (Class O)		Total	
	Count	Percent	Count	Percent	Count	Percent	Count	Percent	Count	Percent	Count	Percent
2014	21	29%	12	20%	38	23%	8	28%	4	14%	83	23%
2015	6	8%	16	26%	37	22%	7	24%	4	14%	70	20%
2016	13	18%	13	21%	29	17%	4	14%	9	32%	68	19%
2017	16	22%	13	21%	34	20%	6	21%	7	25%	76	21%
2018	16	22%	7	11%	29	17%	4	14%	4	14%	60	17%
Total	Count	72	61		167		29		28		357	
	Percent	20%	17%		47%		8%		8%		100%	

7. People in Crashes on Motorcycles with Motorcycle Drivers Involved with Drugs, by Severity of Injury, 2014 - 2018

Year	Fatalities (Class K)		Suspected Serious Injuries (Class A)		Suspected Minor Injuries (Class B)		Possible Injuries (Class C)		No Apparent Injuries (Class O)		Total	
	Count	Percent	Count	Percent	Count	Percent	Count	Percent	Count	Percent	Count	Percent
2014	6	13%	1	14%	8	53%	0	0%	0	0%	15	21%
2015	3	7%	1	14%	1	7%	0	0%	0	0%	5	7%
2016	10	22%	3	43%	2	13%	0	0%	0	0%	15	21%
2017	13	29%	1	14%	1	7%	1	100%	1	50%	17	24%
2018	13	29%	1	14%	3	20%	0	0%	1	50%	18	26%
Total	Count	45	7		15		1		2		70	
	Percent	64%	10%		21%		1%		3%		100%	

8. People in Crashes on Motorcycles with Motorcycle Drivers Involved with Alcohol or Drugs, by Driver Age, 2014 - 2018

Age Group	People in Crashes on Motorcycles with Motorcycle Drivers Involved with Alcohol			People in Crashes on Motorcycles with Motorcycle Drivers Involved with Drugs			People on Motorcycles in Crashes		
	Fatalities	Total	Percent	Fatalities	Total	Percent	Fatalities	Total	Percent
<15	0	0	0%	0	0	0%	0	43	0%
15-19	0	3	0%	1	3	33%	9	379	2%
20-24	7	39	18%	9	14	64%	28	801	3%
25-29	7	49	14%	4	7	57%	26	672	4%
30-34	7	47	15%	5	9	56%	18	553	3%
35-39	5	37	14%	2	6	33%	18	459	4%
40-44	7	33	21%	1	1	100%	17	447	4%
45-49	4	31	13%	2	2	100%	17	446	4%
50-54	15	45	33%	7	10	70%	27	533	5%
55-59	13	42	31%	5	8	63%	29	464	6%
60-64	4	16	25%	4	4	100%	14	319	4%
65-69	2	4	50%	3	4	75%	13	205	6%
70-74	0	5	0%	0	0	0%	7	100	7%
75 +	0	0	0%	2	2	100%	4	53	8%
Missing Data	0	1	0%	0	0	0%	0	197	0%
Total	71	352	20%	45	70	64%	227	5,671	4%

9. People in Crashes on Motorcycles with Motorcycle Drivers Involved with Alcohol or Drugs by Driver Age and Driver Sex, 2014 - 2018

Age Group	People in Crashes on Motorcycles with Motorcycle Drivers Involved with Alcohol							People in Crashes on Motorcycles with Motorcycle Drivers Involved with Drugs						
	Male			Female			Missing Data	Male			Female			Missing Data
	Killed	Total	%	Killed	Total	%		Killed	Total	%	Killed	Total	%	
<15	0	0	0%	0	0	0%	0	0	0	0%	0	0	0%	0
15-19	0	3	0%	0	0	0%	0	1	3	33%	0	0	0%	0
20-24	7	38	18%	0	1	0%	0	9	14	64%	0	0	0%	0
25-29	7	49	14%	0	0	0%	0	4	7	57%	0	0	0%	0
30-34	7	47	15%	0	0	0%	0	5	9	56%	0	0	0%	0
35-39	5	36	14%	0	1	0%	0	2	6	33%	0	0	0%	0
40-44	7	30	23%	0	3	0%	0	1	1	100%	0	0	0%	0
45-49	4	31	13%	0	0	0%	0	2	2	100%	0	0	0%	0
50-54	14	41	34%	1	4	25%	0	7	10	70%	0	0	0%	0
55-59	13	38	34%	0	4	0%	0	5	8	63%	0	0	0%	0
60-64	4	16	25%	0	0	0%	0	4	4	100%	0	0	0%	0
65-69	2	4	50%	0	0	0%	0	3	4	75%	0	0	0%	0
70-74	0	4	0%	0	1	0%	0	0	0	0%	0	0	0%	0
75 +	0	0	0%	0	0	0%	0	2	2	100%	0	0	0%	0
Missing Data	0	0	0%	0	0	0%	1	0	0	0%	0	0	0%	0
Total	70	337	21%	1	14	7%	1	45	70	64%	0	0	0%	0

10. Motorcyclists in Alcohol-involved Crashes, 2014 - 2018

Year	Fatalities			Crashes			Alcohol		
	People Killed on Motorcycles with Alcohol-involved Motorcycle Drivers	People Killed on Motorcycles	Percent Killed with Alcohol-involved Motorcycle Drivers	People on Motorcycles with Alcohol-involved Motorcycle Drivers	Motorcycles Drivers in Crashes	Percent Alcohol-involved	People Killed on Motorcycles with Alcohol-involved Motorcycle Drivers	People on Motorcycles with Alcohol-involved Motorcycle Drivers	Percent Killed
2014	23	43	53%	91	1,006	9%	23	91	25%
2015	6	37	16%	72	1,006	7%	6	72	8%
2016	14	47	30%	65	1,081	6%	14	65	22%
2017	17	53	32%	78	1,113	7%	17	78	22%
2018	16	47	34%	59	1,008	6%	16	59	27%
Total	76	227	33%	365	5,214	7%	76	365	21%

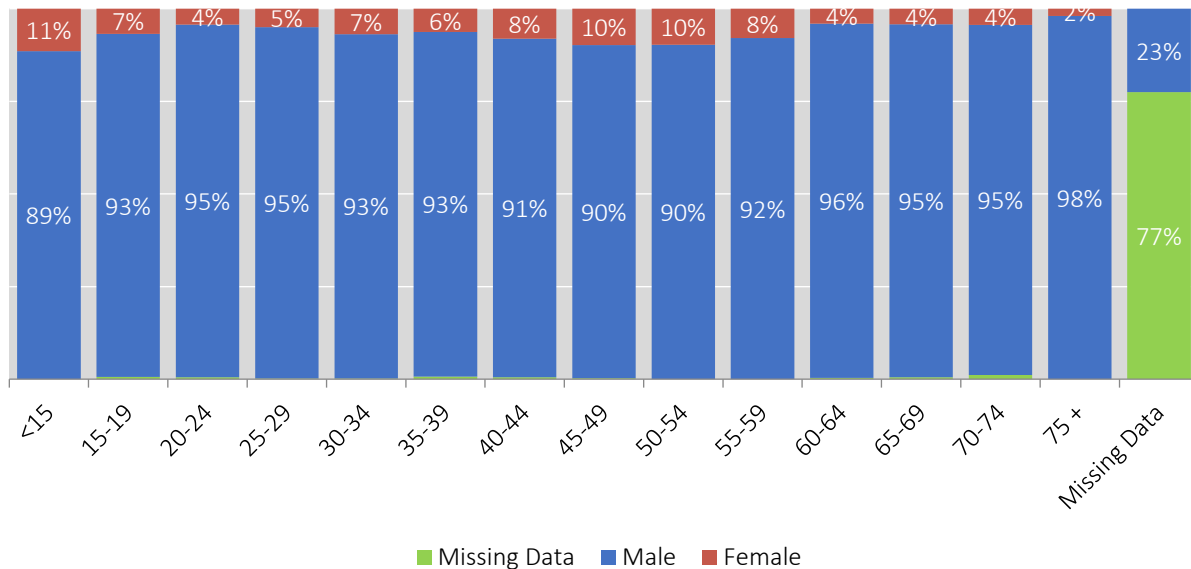
11. Motorcyclists in Drug-involved Crashes, 2014 - 2018

Year	Fatalities			Crashes			Drugs		
	People Killed on Motorcycles with Drug-involved Motorcycle Drivers	People Killed on Motorcycles	Percent Killed with Drug-involved Motorcycle Drivers	People on Motorcycles with Drug-involved Motorcycle Drivers	Motorcycles Drivers in Crashes	Percent Drug-involved	People Killed on Motorcycles with Drug-involved Motorcycle Drivers	People on Motorcycles with Drug-involved Motorcycle Drivers	Percent Killed
2014	8	43	19%	17	1,006	2%	8	17	47%
2015	3	37	8%	6	1,006	1%	3	6	50%
2016	10	47	21%	15	1,081	1%	10	15	67%
2017	13	53	25%	20	1,113	2%	13	20	65%
2018	13	47	28%	17	1,008	2%	13	17	76%
Total	47	227	21%	75	5,214	1%	47	75	63%

12. Motorcycles Drivers in Crashes, by Age Group and Sex, 2014 - 2018

Age Group	Male		Female		Missing Data		Total		
	Count	Percent	Count	Percent	Count	Percent	Count	Percent	
<15	31	89%	4	11%	0	0%	35	1%	
15-19	327	93%	24	7%	2	1%	353	7%	
20-24	729	95%	33	4%	4	1%	766	15%	
25-29	608	95%	32	5%	1	0%	641	12%	
30-34	475	93%	35	7%	1	0%	511	10%	
35-39	382	93%	26	6%	3	1%	411	8%	
40-44	361	91%	32	8%	2	1%	395	8%	
45-49	356	90%	39	10%	1	0%	396	8%	
50-54	434	90%	47	10%	0	0%	481	9%	
55-59	372	92%	32	8%	0	0%	404	8%	
60-64	283	96%	12	4%	1	0%	296	6%	
65-69	182	95%	8	4%	1	1%	191	4%	
70-74	86	95%	4	4%	1	1%	91	2%	
75 +	51	98%	1	2%	0	0%	52	1%	
Missing Data	43	23%	0	0%	148	77%	191	4%	
Total	Count	4,720	91%	329	6%	165	3%	5,214	100%
	Percent		91%		6%		3%		100%

Motorcycle Drivers in Crashes by Age Group and Sex, 2014 - 2018



13. Motorcycles in Crashes by Hit-and-Run, 2014 - 2018

Year	Hit-and-Run		Not a Hit-and-Run		Missing Data		Total	
	Count	Percent	Count	Percent	Count	Percent	Count	Percent
2014	76	14%	929	20%	1	100%	1,006	19%
2015	101	19%	905	19%	0	0%	1,006	19%
2016	117	22%	964	21%	0	0%	1,081	21%
2017	120	23%	993	21%	0	0%	1,113	21%
2018	116	22%	892	19%	0	0%	1,008	19%
Total	Count	530	4,683		1		5,214	100%
	Percent	10%	90%		0%		100%	

14. People on Motorcycles in Crashes by Driver Injury Severity and Light Condition, 2014 - 2018

Light Condition	Fatalities (Class K)		Suspected Serious Injuries (Class A)		Suspected Minor Injuries (Class B)		Possible Injuries (Class C)		No Apparent Injuries (Class O)		Total	
	Count	Percent	Count	Percent	Count	Percent	Count	Percent	Count	Percent	Count	Percent
Daylight	152	64%	527	71%	1,809	73%	710	77%	923	72%	4,121	73%
Dark-Lighted	32	13%	94	13%	363	15%	103	11%	177	14%	769	14%
Dark-Not Lighted	42	18%	75	10%	187	8%	63	7%	92	7%	459	8%
Dusk	8	3%	40	5%	84	3%	29	3%	45	4%	206	4%
Dawn	5	2%	4	1%	25	1%	13	1%	10	1%	57	1%
Other/Not Stated	0	0%	0	0%	4	0%	0	0%	3	0%	7	0%
Left Blank	0	0%	4	1%	11	0%	4	0%	30	2%	49	1%
Invalid Code	0	0%	1	0%	1	0%	0	0%	1	0%	3	0%
Total	Count	239	745		2,484		922		1,281		5,671	100%
	Percent	4%	13%		44%		16%		23%		100%	

15. People on Motorcycles in Crashes by Driver Injury Severity and Road Condition, 2014 - 2018

Road Condition	Fatalities (Class K)		Suspected Serious Injuries (Class A)		Suspected Minor Injuries (Class B)		Possible Injuries (Class C)		No Apparent Injuries (Class O)		Total	
	Count	Percent	Count	Percent	Count	Percent	Count	Percent	Count	Percent	Count	Percent
Dry	229	96%	706	95%	2,293	92%	844	92%	1,158	90%	5,230	92%
Wet	7	3%	21	3%	88	4%	34	4%	45	4%	195	3%
Loose Material	0	0%	16	2%	64	3%	25	3%	25	2%	130	2%
Ice	0	0%	0	0%	3	0%	4	0%	9	1%	16	0%
Standing or Moving Water	0	0%	0	0%	2	0%	3	0%	1	0%	6	0%
Snow	0	0%	0	0%	0	0%	0	0%	3	0%	3	0%
Slush	0	0%	0	0%	0	0%	1	0%	0	0%	1	0%
Other	0	0%	0	0%	11	0%	6	1%	2	0%	19	0%
Left Blank	3	1%	2	0%	23	1%	5	1%	38	3%	71	1%
Total	Count	239	745	2,484	922	1,281	5,671	100%				
	Percent	4%	13%	44%	16%	23%	100%					

16. People on Motorcycles in Crashes by Driver Injury Severity of Injuries and Road Surface, 2014 - 2018

Road Surface	Fatalities (Class K)		Suspected Serious Injuries (Class A)		Suspected Minor Injuries (Class B)		Possible Injuries (Class C)		No Apparent Injuries (Class O)		Total	
	Count	Percent	Count	Percent	Count	Percent	Count	Percent	Count	Percent	Count	Percent
Paved Center and Edge	184	79%	531	72%	1,690	69%	618	68%	797	65%	3,820	67%
Paved Unstriped	14	6%	66	9%	270	11%	86	9%	176	14%	612	11%
Paved Center Stripe	33	14%	118	16%	438	18%	169	19%	236	19%	994	18%
Unpaved	1	0%	23	3%	64	3%	37	4%	25	2%	150	3%
Invalid Code	0	0%	0	0%	0	0%	0	0%	1	0%	1	0%
Left Blank	7	3%	7	1%	22	1%	12	1%	46	4%	94	2%
Total	Count	232	738	2,462	910	1,235	5,671	100%				
	Percent	4%	13%	43%	16%	22%	100%					

17. People on Motorcycles in Crashes by Driver Injury Severity and Traffic Control Device, 2014 - 2018

Traffic Control Device	Fatalities (Class K)		Suspected Serious Injuries (Class A)		Suspected Minor Injuries (Class B)		Possible Injuries (Class C)		No Apparent Injuries (Class O)		Total	
	Count	Percent	Count	Percent	Count	Percent	Count	Percent	Count	Percent	Count	Percent
No Controls	129	54%	447	60%	1,502	60%	460	50%	616	48%	3,154	56%
Traffic Signals	38	16%	106	14%	382	15%	209	23%	299	23%	1,034	18%
Stop Sign	10	4%	32	4%	115	5%	40	4%	51	4%	248	4%
No Passing Zone	33	14%	79	11%	177	7%	63	7%	81	6%	433	8%
4-Way Stop	1	0%	2	0%	14	1%	7	1%	10	1%	34	1%
Yield Sign	1	0%	4	1%	12	0%	14	2%	12	1%	43	1%
RR Gate	0	0%	0	0%	7	0%	0	0%	1	0%	8	0%
Flashers	0	0%	2	0%	5	0%	0	0%	4	0%	11	0%
Other	22	9%	61	8%	246	10%	104	11%	139	11%	572	10%
Left Blank	5	2%	12	2%	24	1%	25	3%	68	5%	134	2%
Total	Count	239	745	2,484	922	1,281	5,671	100%				
	Percent	4%	13%	44%	16%	23%	100%					

18. People on Motorcycles in Crashes by Driver Injury Severity and Road Design Lanes, 2014 - 2018

Road Design Lanes	Fatalities (Class K)		Suspected Serious Injuries (Class A)		Suspected Minor Injuries (Class B)		Possible Injuries (Class C)		No Apparent Injuries (Class O)		Total	
	Count	Percent	Count	Percent	Count	Percent	Count	Percent	Count	Percent	Count	Percent
Two Lanes	113	47%	298	40%	1,086	44%	368	40%	526	41%	2,391	42%
One Lane	67	28%	218	29%	682	27%	246	27%	324	25%	1,537	27%
Three Lanes	36	15%	114	15%	341	14%	143	16%	172	13%	806	14%
Four+ Lanes	18	8%	87	12%	285	11%	115	12%	162	13%	667	12%
Left Blank	5	2%	28	4%	90	4%	50	5%	97	8%	270	5%
Total	Count	239	745	2,484	922	1,281	5,671	100%				
	Percent	4%	13%	44%	16%	23%	100%					

19. People on Motorcycles in Crashes by Driver Injury Severity and Road Design Dividers, 2014 - 2018

Road Design Divider	Fatalities (Class K)		Suspected Serious Injuries (Class A)		Suspected Minor Injuries (Class B)		Possible Injuries (Class C)		No Apparent Injuries (Class O)		Total	
	Count	Percent	Count	Percent	Count	Percent	Count	Percent	Count	Percent	Count	Percent
Painted Divider	86	36%	255	34%	852	34%	300	33%	364	28%	1,857	33%
Physical Divider	67	28%	215	29%	660	27%	261	28%	320	25%	1,523	27%
Undivided	15	6%	76	10%	298	12%	98	11%	118	9%	605	11%
Missing Data	71	30%	199	27%	674	27%	263	29%	479	37%	1,686	30%
Total	Count	239	745	2,484	922	1,281	5,671	100%				
	Percent	4%	13%	44%	16%	23%	100%					

20. People on Motorcycles in Crashes by Driver Injury Severity and Road Design, 2014 - 2018

Road Design	Fatalities (Class K)		Suspected Serious Injuries (Class A)		Suspected Minor Injuries (Class B)		Possible Injuries (Class C)		No Apparent Injuries (Class O)		Total	
	Count	Percent	Count	Percent	Count	Percent	Count	Percent	Count	Percent	Count	Percent
Full Access Control or Freeway	81	34%	255	34%	798	32%	259	28%	358	28%	1,751	31%
One-Way	17	7%	57	8%	163	7%	58	6%	88	7%	383	7%
Construction Zone	1	0%	9	1%	33	1%	12	1%	21	2%	76	1%
Ramp	4	2%	11	1%	40	2%	19	2%	7	1%	81	1%
Alley	1	0%	1	0%	5	0%	3	0%	0	0%	10	0%
Undeveloped	0	0%	13	2%	25	1%	15	2%	7	1%	60	1%
Other	82	34%	259	35%	863	35%	370	40%	432	34%	2,006	35%
Left Blank	53	22%	140	19%	557	22%	186	20%	368	29%	1,304	23%
Total	Count	239	745	2,484	922	1,281	5,671	100%				
	Percent	4%	13%	44%	16%	23%	100%					

21. People on Motorcycles in Crashes by Driver Injury Severity and Motorcycle Driver Action, 2014 – 2018

Driver Action	Fatalities (Class K)		Suspected Serious Injuries (Class A)		Suspected Minor Injuries (Class B)		Possible Injuries (Class C)		No Apparent Injuries (Class O)		Total	
	Count	Percent	Count	Percent	Count	Percent	Count	Percent	Count	Percent	Count	Percent
Going Straight	210	88%	611	82%	1,942	78%	654	71%	821	64%	4,238	75%
Left Turn	7	3%	39	5%	210	8%	66	7%	85	7%	407	7%
Right Turn	3	1%	22	3%	104	4%	64	7%	59	5%	252	4%
Overtaking Passing	1	0%	16	2%	41	2%	10	1%	23	2%	91	2%
Start In Traffic Lane	0	0%	2	0%	0	0%	2	0%	4	0%	8	0%
Parked	1	0%	0	0%	1	0%	2	0%	49	4%	53	1%
Stopped For Traffic	1	0%	4	1%	6	0%	28	3%	36	3%	75	1%
Backing	0	0%	0	0%	2	0%	0	0%	9	1%	11	0%
Slowing	2	1%	9	1%	33	1%	22	2%	27	2%	93	2%
Start From Park	0	0%	3	0%	6	0%	2	0%	0	0%	11	0%
Stopped for Signs or Signal	2	1%	5	1%	11	0%	32	3%	59	5%	109	2%
U-turn	0	0%	1	0%	10	0%	7	1%	5	0%	23	0%
Left Blank	12	5%	33	4%	118	5%	33	4%	104	8%	300	5%
Total	Count	239	745	2,484	922	1,281	5,671	100%				
	Percent	4%	13%	44%	16%	23%	100%					

22. People on Motorcycles in Crashes by Driver Injury Severity and Agency, 2014 – 2018

Law Enforcement Agency	Fatalities (Class K)		Suspected Serious Injuries (Class A)		Suspected Minor Injuries (Class B)		Possible Injuries (Class C)		No Apparent Injuries (Class O)		Total	
	Count	Percent	Count	Percent	Count	Percent	Count	Percent	Count	Percent	Count	Percent
Albuquerque Police Department	66	28%	282	38%	820	33%	318	34%	319	25%	1,805	32%
New Mexico State Police	68	28%	107	14%	283	11%	65	7%	125	10%	648	11%
Las Cruces Police Department	8	3%	36	5%	170	7%	49	5%	96	7%	359	6%
Bernalillo County Sheriff's Department	18	8%	45	6%	160	6%	57	6%	64	5%	344	6%
Santa Fe Police Department	7	3%	15	2%	85	3%	51	6%	49	4%	207	4%
Others	72	30%	260	35%	966	39%	382	41%	628	49%	2,308	41%
Total	Count	239	745	2,484	922	1,281	5,671	100%				
	Percent	4%	13%	44%	16%	23%	100%					

23. People on Motorcycles in Crashes by Driver Injury Severity and City, 2014 – 2018

Cities	Fatalities (Class K)		Suspected Serious Injuries (Class A)		Suspected Minor Injuries (Class B)		Possible Injuries (Class C)		No Apparent Injuries (Class O)		Total	
	Count	Percent	Count	Percent	Count	Percent	Count	Percent	Count	Percent	Count	Percent
Albuquerque	74	31%	313	42%	946	38%	379	41%	479	37%	2,191	38.6%
Las Cruces	12	5%	45	6%	204	8%	65	7%	115	9%	441	7.8%
Santa Fe	7	3%	18	2%	105	4%	54	6%	57	4%	241	4.2%
Rio Rancho	1	0%	17	2%	74	3%	29	3%	31	2%	152	2.7%
Farmington	3	1%	22	3%	60	2%	20	2%	36	3%	141	2.5%
Alamogordo	3	1%	10	1%	62	2%	21	2%	37	3%	133	2.3%
Carlsbad	3	1%	10	1%	44	2%	20	2%	38	3%	115	2.0%
Roswell	3	1%	9	1%	43	2%	19	2%	34	3%	108	1.9%
Clovis	3	1%	11	1%	36	1%	20	2%	30	2%	100	1.8%
Hobbs	4	2%	5	1%	46	2%	11	1%	23	2%	89	1.6%
Ruidoso	1	0%	4	1%	21	1%	15	2%	15	1%	56	1.0%
Gallup	1	0%	4	1%	24	1%	7	1%	15	1%	51	0.9%
Los Lunas	0	0%	4	1%	19	1%	9	1%	9	1%	41	0.7%
Española	0	0%	4	1%	17	1%	6	1%	14	1%	41	0.7%
Las Vegas	0	0%	0	0%	23	1%	4	0%	10	1%	37	0.7%
Taos	2	1%	2	0%	13	1%	7	1%	9	1%	33	0.6%
Silver City	0	0%	3	0%	16	1%	4	0%	8	1%	31	0.5%
Artesia	2	1%	5	1%	14	1%	3	0%	4	0%	28	0.5%
Bernalillo	0	0%	0	0%	11	0%	9	1%	8	1%	28	0.5%
Deming	1	0%	1	0%	15	1%	1	0%	7	1%	25	0.4%
Truth or Consequences	1	0%	3	0%	10	0%	4	0%	4	0%	22	0.4%
Aztec	2	1%	4	1%	13	1%	1	0%	2	0%	22	0.4%
Belen	2	1%	1	0%	9	0%	1	0%	6	0%	19	0.3%
Grants	1	0%	4	1%	2	0%	3	0%	8	1%	18	0.3%
Los Alamos	0	0%	4	1%	7	0%	2	0%	3	0%	16	0.3%
Cloudcroft	0	0%	1	0%	10	0%	1	0%	4	0%	16	0.3%
Chaparral	0	0%	3	0%	8	0%	2	0%	2	0%	15	0.3%
Lovington	1	0%	1	0%	7	0%	1	0%	5	0%	15	0.3%
Edgewood	0	0%	2	0%	7	0%	5	1%	1	0%	15	0.3%
La Mesa	0	0%	2	0%	6	0%	1	0%	5	0%	14	0.2%
Rural and Other Cities	112	47%	233	31%	612	25%	198	21%	262	20%	1,417	25.0%
Total	Count	239	745	2,484	922	1,281	5,671	100%				
	Percent	4%	13%	44%	16%	23%						

24. People on Motorcycles in Crashes by Driver Injury Severity and County, 2014 - 2018

County	Fatalities (Class K)	Suspected Serious Injuries (Class A)	Suspected Minor Injuries (Class B)	Possible Injuries (Class C)	No Apparent Injuries (Class O)	Total		
						Count	Percent	
Bernalillo	84	328	995	397	506	2,310	41%	
Catron	1	2	1	3	3	10	0%	
Chaves	7	15	57	20	39	138	2%	
Cibola	5	8	26	9	22	70	1%	
Colfax	5	15	25	9	16	70	1%	
Curry	5	14	42	23	36	120	2%	
De Baca	0	0	2	1	0	3	0%	
Doña Ana	18	65	270	80	142	575	10%	
Eddy	10	22	71	24	53	180	3%	
Grant	1	12	49	13	18	93	2%	
Guadalupe	4	3	6	4	3	20	0%	
Harding	0	0	1	0	0	1	0%	
Hidalgo	2	2	1	1	2	8	0%	
Lea	9	9	64	13	33	128	2%	
Lincoln	5	13	46	16	23	103	2%	
Los Alamos	0	5	14	6	5	30	1%	
Luna	2	1	26	6	13	48	1%	
McKinley	1	10	40	16	19	86	2%	
Mora	1	5	18	4	1	29	1%	
Otero	4	21	104	36	53	218	4%	
Quay	2	5	4	1	2	14	0%	
Rio Arriba	5	27	40	7	22	101	2%	
Roosevelt	0	2	7	3	4	16	0%	
San Juan	12	46	103	30	46	237	4%	
San Miguel	1	2	33	8	11	55	1%	
Sandoval	9	33	123	48	49	262	5%	
Santa Fe	19	33	166	90	84	392	7%	
Sierra	5	4	24	5	7	45	1%	
Socorro	6	7	16	5	10	44	1%	
Taos	6	6	25	10	16	63	1%	
Torrance	2	3	10	8	5	28	0%	
Union	0	9	6	5	5	25	0%	
Valencia	8	18	69	21	32	148	3%	
Left Blank	0	0	0	0	1	1	0%	
Total	Count	239	745	2,484	922	1,281	5,671	100%
	Percent	11%	17%	32%	29%	10%	100%	