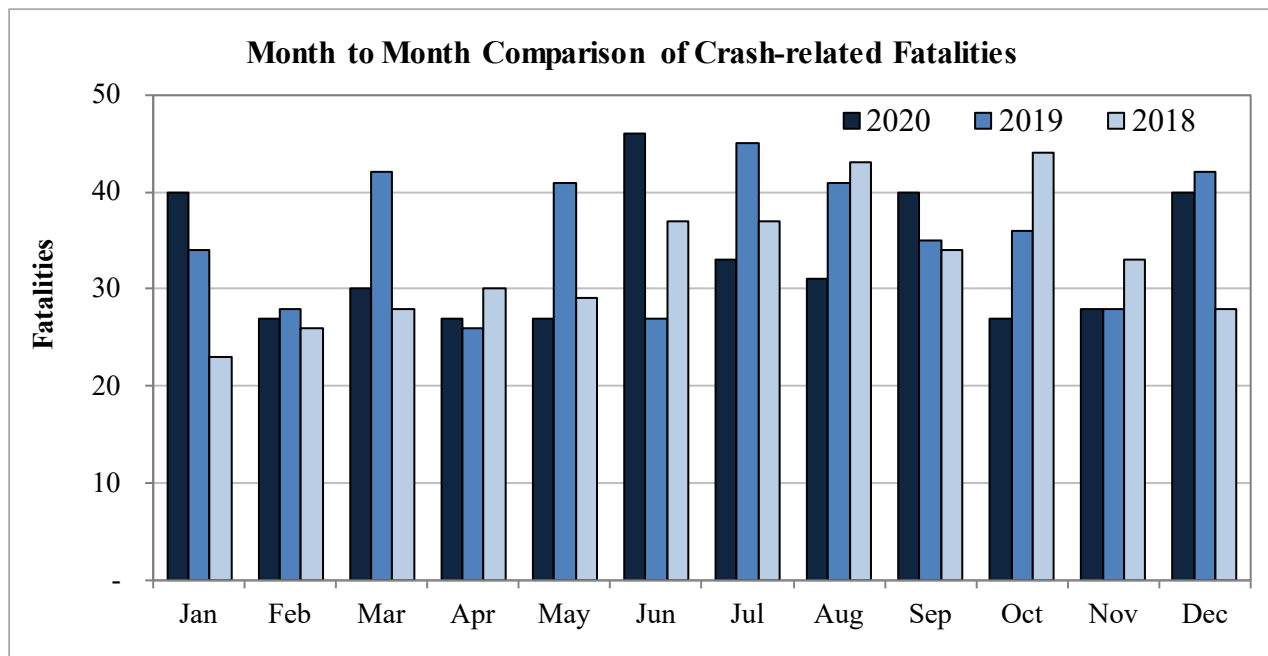


## New Mexico Monthly Traffic Fatality Report, 2020

Produced for the New Mexico Department of Transportation, Traffic Safety Division, Traffic Records Bureau,  
Under Contract No. 6093 by UNM Geospatial and Population Studies, Traffic Research Unit (TRU)

Fatalities by Month 2020, 2019, and 2018			
Month	2020	2019	2018
January	40	34	23
February	27	28	26
March	30	42	28
April	27	26	30
May	27	41	29
June	46	27	37
July	33	45	37
August	31	41	43
September	40	35	34
October	27	36	44
November	28	28	33
December	40	42	28
<b>Total</b>	<b>396</b>	<b>425</b>	<b>392</b>



Fatalities by Vehicle Type, 2020										
Month in 2020	Cars	Pickup Trucks	Semi Trucks, Buses	Vans, SUVs, Utility Vehicles	ATV (4W)	Motorcyclists	Pedestrians	Pedalcyclists	Vehicle Type Unknown or Other	Total Fatalities
January	9	9	-	11	-	-	11	-	-	40
February	14	3	-	2	-	3	4	1	-	27
March	8	6	-	6	-	-	10	-	-	30
April	5	1	1	5	-	4	10	1	-	27
May	8	3	-	7	-	9	-	-	-	27
June	11	10	2	8	1	6	7	1	-	46
July	6	10	-	6	3	4	2	2	-	33
August	12	5	1	6	1	2	3	1	-	31
September	6	5	1	5	3	12	7	1	-	40
October	8	3	2	3	-	4	7	-	-	27
November	8	4	1	3	-	2	10	-	-	28
December	11	7	2	11	-	-	8	1	-	40
<b>Total</b>	<b>106</b>	<b>66</b>	<b>10</b>	<b>73</b>	<b>8</b>	<b>46</b>	<b>79</b>	<b>8</b>	<b>-</b>	<b>396</b>

Fatalities by Alcohol Involvement <sup>1</sup> , 2020				
Month in 2020	Alcohol-involved <sup>1</sup>	Not Alcohol-involved	Alcohol Unknown	Total Fatalities
January	12	28	-	40
February	8	19	-	27
March	14	16	-	30
April	7	20	-	27
May	15	12	-	27
June	18	28	-	46
July	12	21	-	33
August	11	20	-	31
September	13	27	-	40
October	12	15	-	27
November	12	16	-	28
December	6	34	-	40
<b>Total</b>	<b>140</b>	<b>256</b>	<b>-</b>	<b>396</b>

<sup>1</sup> All fatalities in alcohol-involved crashes.

Alcohol-involved <sup>1</sup> Fatalities			
Month	2020	2019	2018
January	12	17	10
February	8	9	10
March	14	14	10
April	7	8	15
May	15	19	11
June	18	10	16
July	12	21	17
August	11	20	10
September	13	14	12
October	12	11	15
November	12	13	13
December	6	21	13
<b>Total</b>	<b>140</b>	<b>177</b>	<b>152</b>

<sup>1</sup> All fatalities in alcohol-involved crashes.

Fatalities Under 21, 2020	
Age	Fatalities
1	-
2	-
3	1
4	1
5	1
6	-
7	-
8	-
9	-
10	2
11	-
12	3
13	-
14	2
15	-
16	8
17	3
18	12
19	7
20	1
<b>Total</b>	<b>41</b>

Month in 2020	Total Fatalities, 2020	Alcohol-involved <sup>1</sup> Fatalities, 2020			
		Motorcyclist Fatalities	Percent Motorcyclist Fatalities	Pedestrian Fatalities	Percent Pedestrian Fatalities
January	40	-	0.0%	5	12.5%
February	27	-	0.0%	3	11.1%
March	30	-	0.0%	4	13.3%
April	27	-	0.0%	1	3.7%
May	27	4	14.8%	-	0.0%
June	46	2	4.3%	3	6.5%
July	33	2	6.1%	-	0.0%
August	31	1	3.2%	-	0.0%
September	40	4	10.0%	2	5.0%
October	27	3	11.1%	4	14.8%
November	28	-	0.0%	3	10.7%
December	40	-	0.0%	1	2.5%
<b>Total</b>	<b>396</b>	<b>16</b>	<b>4.0%</b>	<b>26</b>	<b>6.6%</b>

<sup>1</sup> All fatalities in alcohol-involved crashes.

Alcohol-involved <sup>1</sup> Fatalities, 2020		
Alcohol-involved	140	35%
Not Alcohol-involved	256	65%
Alcohol Unknown	-	-
<b>Total</b>	<b>396</b>	<b>100%</b>

<sup>1</sup> All fatalities in alcohol-involved crashes.

Motorcyclist/4W Helmet Usage, 2020	
Helmet Usage	Fatalities
Yes	19
No	35
Unknown	-
<b>Total</b>	<b>54</b>

Fatalities by Vehicle <sup>1</sup> Occupant Seat Belt Usage, 2020				
Restraint	Yes	No	Unknown	Total
Seat Belt	85	160	-	245

<sup>1</sup> Total vehicle occupant fatalities. Excludes motorcyclist, 4W/ATV, semi truck, pedestrian and pedalcyclist fatalities.

Senior (65+) Fatalities	
Year	Fatalities
2020	57
2019	57
2018	61

Fatalities by Residency and Location, 2020				
Location	New Mexico Resident	Non-Resident	Unknown Residency	Total
Rural	137	60	-	197
Urban	191	8	-	199
Unknown	-	-	-	-
<b>Total</b>	<b>328</b>	<b>68</b>	<b>-</b>	<b>396</b>

Month to Month Comparison of Fatalities by Alcohol Involvement												
Month	2020 Fatalities				2019 Fatalities				2018 Fatalities			
	Alcohol-involved <sup>1</sup>			Total	Alcohol-involved <sup>1</sup>			Total	Alcohol-involved <sup>1</sup>			Total
	Yes	No	Unk		Yes	No	Unk		Yes	No	Unk	
January	12	28	-	40	17	17	-	34	10	13	-	23
February	8	19	-	27	9	19	-	28	10	16	-	26
March	14	16	-	30	14	28	-	42	10	18	-	28
April	7	20	-	27	8	18	-	26	15	15	-	30
May	15	12	-	27	19	22	-	41	11	18	-	29
June	18	28	-	46	10	17	-	27	16	21	-	37
July	12	21	-	33	21	24	-	45	17	20	-	37
August	11	20	-	31	20	21	-	41	10	33	-	43
September	13	27	-	40	14	21	-	35	12	22	-	34
October	12	15	-	27	11	25	-	36	15	29	-	44
November	12	16	-	28	13	15	-	28	13	20	-	33
December	6	34	-	40	21	21	-	42	13	15	-	28
<b>Total</b>	<b>140</b>	<b>256</b>	<b>-</b>	<b>396</b>	<b>177</b>	<b>248</b>	<b>-</b>	<b>425</b>	<b>152</b>	<b>240</b>	<b>-</b>	<b>392</b>

<sup>1</sup> Identifies whether the fatality resulted from an alcohol-involved crash.

Month to Month Comparison of Fatalities by Seat Belt Usage												
Month	2020 Fatalities				2019 Fatalities				2018 Fatalities			
	Seat Belt <sup>1</sup>			Total <sup>2</sup>	Seat Belt <sup>1</sup>			Total <sup>2</sup>	Seat Belt <sup>1</sup>			Total <sup>2</sup>
	Yes	No	Unk		Yes	No	Unk		Yes	No	Unk	
January	13	16	-	29	8	8	-	16	6	11	-	17
February	6	13	-	19	5	15	-	20	6	12	-	18
March	8	12	-	20	9	14	-	23	7	6	-	13
April	3	8	-	11	11	7	-	18	5	12	-	17
May	7	11	-	18	10	13	-	23	5	10	-	15
June	10	19	-	29	11	5	-	16	13	12	-	25
July	9	13	-	22	15	12	-	27	8	11	-	19
August	5	18	-	23	9	21	-	30	13	11	-	24
September	5	11	-	16	10	12	-	22	8	11	-	19
October	7	7	-	14	10	7	-	17	9	17	-	26
November	6	9	-	15	6	8	-	14	12	8	-	20
December	6	23	-	29	10	19	-	29	3	14	-	17
<b>Total</b>	<b>85</b>	<b>160</b>	<b>-</b>	<b>245</b>	<b>114</b>	<b>141</b>	<b>-</b>	<b>255</b>	<b>95</b>	<b>135</b>	<b>-</b>	<b>230</b>

<sup>1</sup> Identifies whether a vehicle occupant was belted (Yes), unbelted (No), or belt usage was not reported (Unk).

<sup>2</sup> Total vehicle occupant fatalities. Excludes motorcyclist, 4W/ATV, semi truck, pedestrian and pedalcyclist fatalities.

Fatalities by County and Month, 2020														
County	Jan.	Feb.	Mar.	Apr.	May	Jun.	Jul.	Aug.	Sep.	Oct.	Nov.	Dec.	2020 Total	2019 Total
Bernalillo	10	8	6	12	8	12	12	9	7	5	9	11	109	104
Catron	-	-	-	-	-	-	-	-	-	1	-	-	1	-
Chaves	1	1	2	-	-	1	-	1	1	-	2	3	12	10
Cibola	2	1	3	1	1	3	-	-	1	-	-	3	15	16
Colfax	-	-	-	2	-	-	-	-	-	-	1	-	3	5
Curry	-	-	-	-	-	2	2	-	2	1	-	-	7	8
De Baca	-	-	-	-	-	-	-	-	-	-	-	-	-	2
Doña Ana	1	4	4	1	3	-	1	1	4	-	-	1	20	31
Eddy	3	2	1	1	-	-	-	1	2	-	-	-	10	16
Grant	2	-	1	-	1	2	1	-	1	-	-	1	9	3
Guadalupe	-	-	-	-	-	2	-	-	1	-	-	4	7	10
Harding	-	-	-	-	-	-	-	-	-	-	-	-	-	-
Hidalgo	-	-	1	-	-	-	-	1	-	-	1	-	3	9
Lea	2	1	2	1	-	-	-	1	3	-	2	2	14	26
Lincoln	-	-	-	-	1	-	1	-	1	-	-	1	4	7
Los Alamos	-	-	-	-	-	-	-	-	-	1	-	1	2	1
Luna	-	-	1	2	-	1	2	-	-	-	-	2	8	11
McKinley	2	2	1	-	5	5	1	-	3	2	3	-	24	26
Mora	1	-	-	-	-	-	-	-	-	-	-	-	1	5
Otero	-	-	-	1	-	1	1	-	1	-	1	-	5	11
Quay	-	-	-	-	-	-	-	-	-	2	-	1	3	2
Rio Arriba	-	-	-	-	2	5	2	4	1	1	-	1	16	12
Roosevelt	-	-	-	1	-	-	-	-	-	-	-	1	2	3
San Juan	2	2	3	2	1	3	1	2	2	2	1	2	23	37
San Miguel	2	1	2	-	1	-	-	1	-	1	-	-	8	4
Sandoval	3	1	-	-	1	1	-	1	2	2	2	1	14	17
Santa Fe	6	3	2	1	-	2	4	3	4	4	1	1	31	16
Sierra	-	-	-	-	-	-	1	-	-	1	-	-	2	1
Socorro	2	-	-	-	-	2	-	3	-	1	2	1	11	6
Taos	-	-	1	1	1	4	2	1	1	-	2	2	15	5
Torrance	-	1	-	-	-	-	1	1	1	1	-	1	6	9
Union	1	-	-	-	-	-	-	-	-	1	-	-	2	1
Valencia	-	-	-	1	2	-	1	1	2	1	1	-	9	11
<b>Total</b>	<b>40</b>	<b>27</b>	<b>30</b>	<b>27</b>	<b>27</b>	<b>46</b>	<b>33</b>	<b>31</b>	<b>40</b>	<b>27</b>	<b>28</b>	<b>40</b>	<b>396</b>	<b>425</b>

Fatalities by County Relating to Alcohol, Belt Use, and Under 21 BAC, 2020							
County	Alcohol-involved Fatalities <sup>1</sup>		Unbelted Fatalities		Under 21 (15-20) with a BAC <sup>2</sup>		Total Fatalities
	Count	Percent <sup>3</sup>	Count	Percent <sup>3</sup>	Count	Percent <sup>3</sup>	
Bernalillo	35	32.1%	39	35.8%	4	3.7%	109
Catron	-	0.0%	1	100.0%	-	0.0%	1
Chaves	2	16.7%	3	25.0%	-	0.0%	12
Cibola	3	20.0%	6	40.0%	-	0.0%	15
Colfax	2	66.7%	2	66.7%	-	0.0%	3
Curry	3	42.9%	3	42.9%	-	0.0%	7
De Baca	-	-	-	-	-	-	-
Doña Ana	9	45.0%	6	30.0%	-	0.0%	20
Eddy	2	20.0%	5	50.0%	-	0.0%	10
Grant	2	22.2%	3	33.3%	-	0.0%	9
Guadalupe	2	28.6%	5	71.4%	-	0.0%	7
Harding	-	-	-	-	-	-	-
Hidalgo	1	33.3%	1	33.3%	-	0.0%	3
Lea	3	21.4%	7	50.0%	1	7.1%	14
Lincoln	1	25.0%	3	75.0%	-	0.0%	4
Los Alamos	1	50.0%	1	50.0%	-	0.0%	2
Luna	2	25.0%	4	50.0%	-	0.0%	8
McKinley	12	50.0%	13	54.2%	-	0.0%	24
Mora	-	0.0%	1	100.0%	-	0.0%	1
Otero	3	60.0%	-	0.0%	-	0.0%	5
Quay	1	33.3%	1	33.3%	-	0.0%	3
Rio Arriba	7	43.8%	9	56.3%	-	0.0%	16
Roosevelt	-	0.0%	2	100.0%	-	0.0%	2
San Juan	15	65.2%	4	17.4%	-	0.0%	23
San Miguel	3	37.5%	5	62.5%	-	0.0%	8
Sandoval	2	14.3%	4	28.6%	1	7.1%	14
Santa Fe	13	41.9%	10	32.3%	1	3.2%	31
Sierra	-	0.0%	1	50.0%	-	0.0%	2
Socorro	2	18.2%	6	54.5%	-	0.0%	11
Taos	8	53.3%	7	46.7%	-	0.0%	15
Torrance	2	33.3%	2	33.3%	-	0.0%	6
Union	2	100.0%	1	50.0%	1	50.0%	2
Valencia	2	22.2%	5	55.6%	-	0.0%	9
<b>Total</b>	<b>140</b>	<b>35.4%</b>	<b>160</b>	<b>40.4%</b>	<b>8</b>	<b>2.0%</b>	<b>396</b>

<sup>1</sup> All fatalities in alcohol-involved crashes.

<sup>2</sup> Fatalities under 21 with a reported BAC (Blood Alcohol Content) above zero.

<sup>3</sup> Percentage based on total fatalities in the county.

Fatalities by Maintenance District and Month, 2020													
District	Jan.	Feb.	Mar.	Apr.	May	Jun.	Jul.	Aug.	Sep.	Oct.	Nov.	Dec.	Total
District 1	5	4	7	3	4	5	5	5	5	2	3	5	53
District 2	6	4	5	4	1	4	4	3	10	1	5	7	54
District 3	12	9	6	13	11	13	13	10	11	8	11	12	129
District 4	4	1	2	2	1	2	-	1	1	4	1	5	24
District 5	8	6	6	4	4	14	10	11	9	9	4	7	92
District 6	5	3	4	1	6	8	1	1	4	3	4	4	44
<b>Total</b>	<b>40</b>	<b>27</b>	<b>30</b>	<b>27</b>	<b>27</b>	<b>46</b>	<b>33</b>	<b>31</b>	<b>40</b>	<b>27</b>	<b>28</b>	<b>40</b>	<b>396</b>

Fatalities by Maintenance District Relating to Alcohol, Belt Use, and Under 21 BAC, 2020							
District	Alcohol-involved Fatalities <sup>1</sup>		Unbelted Fatalities		Under 21 (15-20) Fatalities with a BAC <sup>2</sup>		Total Fatalities
	Count	Percent <sup>3</sup>	Count	Percent <sup>3</sup>	Count	Percent <sup>3</sup>	
District 1	16	30.2%	21	39.6%	-	0.0%	53
District 2	14	25.9%	23	42.6%	1	1.9%	54
District 3	39	30.2%	47	36.4%	5	3.9%	129
District 4	10	41.7%	15	62.5%	1	4.2%	24
District 5	46	50.0%	33	35.9%	1	1.1%	92
District 6	15	34.1%	21	47.7%	-	0.0%	44
<b>Total</b>	<b>140</b>	<b>35.4%</b>	<b>160</b>	<b>40.4%</b>	<b>8</b>	<b>2.0%</b>	<b>396</b>

<sup>1</sup> All fatalities in alcohol-involved crashes.

<sup>2</sup> Fatalities under 21 with a reported BAC (Blood Alcohol Content) above zero.

<sup>3</sup> Percentage based on total fatalities in the district