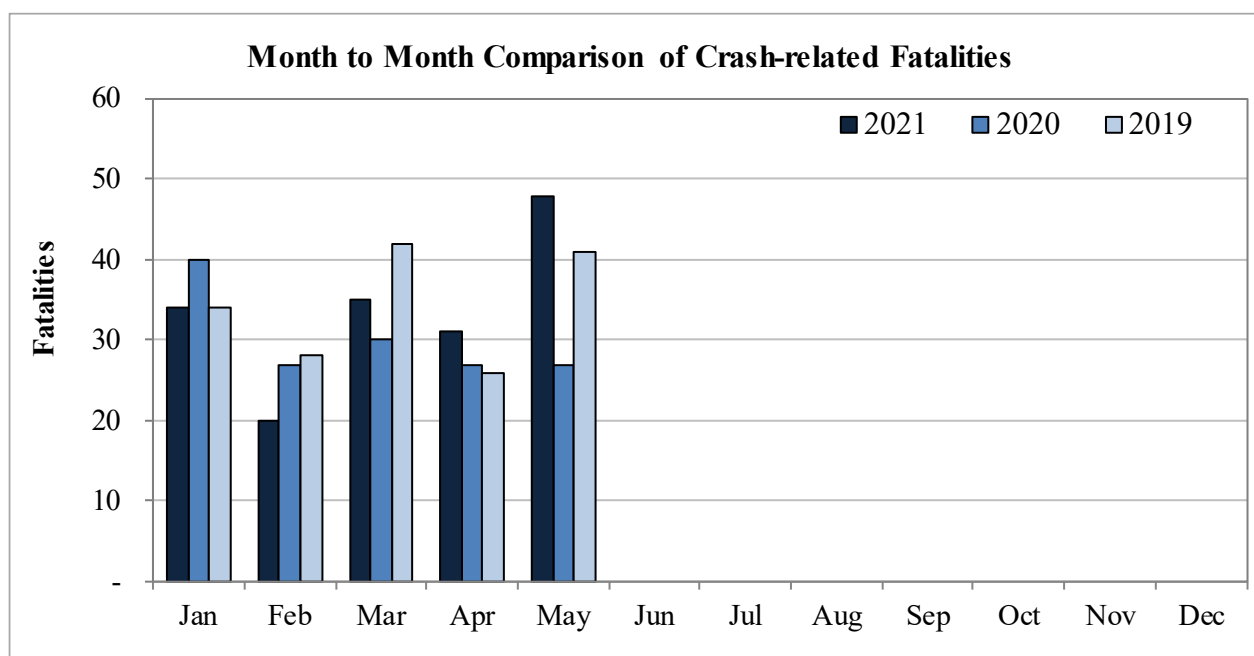


## New Mexico Monthly Traffic Fatality Report, 2021

Produced for the New Mexico Department of Transportation, Traffic Safety Division, Traffic Records Bureau,  
Under Contract No. 6093 by UNM Geospatial and Population Studies, Traffic Research Unit (TRU)

Fatalities by Month 2021, 2020, and 2019, 2021 to Date			
Month	2021	2020	2019
January	34	40	34
February	20	27	28
March	35	30	42
April	31	27	26
May	48	27	41
June	-	-	-
July	-	-	-
August	-	-	-
September	-	-	-
October	-	-	-
November	-	-	-
December	-	-	-
<b>Total</b>	<b>168</b>	<b>151</b>	<b>171</b>



Fatalities by Vehicle Type, 2021 to Date										
Month in 2021	Cars	Pickup Trucks	Semi Trucks, Buses	Vans, SUVs, Utility Vehicles	ATV (4W)	Motorcyclists	Pedestrians	Pedalcyclists	Vehicle Type Unknown or Other	Total Fatalities
January	9	7	1	6	-	1	10	-	-	34
February	4	5	2	2	-	1	5	1	-	20
March	8	10	1	3	-	6	6	1	-	35
April	13	-	-	8	-	5	5	-	-	31
May	18	9	1	7	-	4	7	-	2	48
June	-	-	-	-	-	-	-	-	-	-
July	-	-	-	-	-	-	-	-	-	-
August	-	-	-	-	-	-	-	-	-	-
September	-	-	-	-	-	-	-	-	-	-
October	-	-	-	-	-	-	-	-	-	-
November	-	-	-	-	-	-	-	-	-	-
December	-	-	-	-	-	-	-	-	-	-
<b>Total</b>	<b>52</b>	<b>31</b>	<b>5</b>	<b>26</b>	<b>-</b>	<b>17</b>	<b>33</b>	<b>2</b>	<b>2</b>	<b>168</b>

Fatalities by Alcohol Involvement <sup>1</sup> , 2021 to Date				
Month in 2021	Alcohol-involved <sup>1</sup>	Not Alcohol-involved	Alcohol Unknown	Total Fatalities
January	6	28	-	34
February	4	16	-	20
March	8	27	-	35
April	5	26	-	31
May	12	36	-	48
June	-	-	-	-
July	-	-	-	-
August	-	-	-	-
September	-	-	-	-
October	-	-	-	-
November	-	-	-	-
December	-	-	-	-
<b>Total</b>	<b>35</b>	<b>133</b>	<b>-</b>	<b>168</b>

<sup>1</sup> All fatalities in alcohol-involved crashes.

Alcohol-involved <sup>1</sup> Fatalities, 2021 to Date			
Month	2021	2020	2019
January	6	14	17
February	4	8	9
March	8	14	14
April	5	7	8
May	12	15	19
June	-	-	-
July	-	-	-
August	-	-	-
September	-	-	-
October	-	-	-
November	-	-	-
December	-	-	-
<b>Total</b>	<b>35</b>	<b>58</b>	<b>67</b>

<sup>1</sup> All fatalities in alcohol-involved crashes.

Fatalities Under 21, 2021 to Date	
Age	Fatalities
1	3
2	2
3	-
4	-
5	-
6	-
7	1
8	-
9	-
10	-
11	1
12	1
13	1
14	1
15	2
16	-
17	6
18	3
19	2
20	-
<b>Total</b>	<b>23</b>

Month in 2021	Total Fatalities, to Date	Alcohol-involved <sup>1</sup> Fatalities, 2021 to Date			
		Motorcyclist Fatalities	Percent Motorcyclist Fatalities	Pedestrian Fatalities	Percent Pedestrian Fatalities
January	34	1	2.9%	1	2.9%
February	20	-	0.0%	-	0.0%
March	35	1	2.9%	-	0.0%
April	31	-	0.0%	-	0.0%
May	48	-	0.0%	1	2.1%
June	-	-	0.0%	-	0.0%
July	-	-	0.0%	-	0.0%
August	-	-	0.0%	-	0.0%
September	-	-	0.0%	-	0.0%
October	-	-	0.0%	-	0.0%
November	-	-	0.0%	-	0.0%
December	-	-	0.0%	-	0.0%
<b>Total</b>	<b>168</b>	<b>2</b>	<b>1.2%</b>	<b>2</b>	<b>1.2%</b>

<sup>1</sup> All fatalities in alcohol-involved crashes.

Alcohol-involved <sup>1</sup> Fatalities, 2021 to Date		
Alcohol-involved	35	21%
Not Alcohol-involved	133	79%
Alcohol Unknown	-	-
<b>Total</b>	<b>168</b>	<b>100%</b>

<sup>1</sup> All fatalities in alcohol-involved crashes.

Motorcyclist/4W Helmet Usage, 2021 to Date	
Helmet Usage	Fatalities
Yes	1
No	16
Unknown	-
<b>Total</b>	<b>17</b>

Fatalities by Vehicle <sup>1</sup> Occupant Seat Belt Usage, 2021 to Date				
Restraint	Yes	No	Unknown	Total
Seat Belt	32	77	-	109

<sup>1</sup> Total vehicle occupant fatalities. Excludes motorcyclist, 4W/ATV, semi truck, pedestrian and pedalcyclist fatalities.

Senior (65+) Fatalities 2021 to Date	
Year	Fatalities
2021	19
2020	20
2019	27

Fatalities by Residency and Location, 2021 to Date				
Location	New Mexico Resident	Non-Resident	Unknown Residency	Total
Rural	52	27	-	79
Urban	80	9	-	89
Unknown	-	-	-	-
<b>Total</b>	<b>132</b>	<b>36</b>	<b>-</b>	<b>168</b>

Month to Month Comparison of Fatalities by Alcohol Involvement, 2021 to Date												
Month	2021 Fatalities				2020 Fatalities				2019 Fatalities			
	Alcohol-involved <sup>1</sup>			Total	Alcohol-involved <sup>1</sup>			Total	Alcohol-involved <sup>1</sup>			Total
	Yes	No	Unk		Yes	No	Unk		Yes	No	Unk	
January	6	28	-	34	14	26	-	40	17	17	-	34
February	4	16	-	20	8	19	-	27	9	19	-	28
March	8	27	-	35	14	16	-	30	14	28	-	42
April	5	26	-	31	7	20	-	27	8	18	-	26
May	12	36	-	48	15	12	-	27	19	22	-	41
June	-	-	-	-	-	-	-	-	-	-	-	-
July	-	-	-	-	-	-	-	-	-	-	-	-
August	-	-	-	-	-	-	-	-	-	-	-	-
September	-	-	-	-	-	-	-	-	-	-	-	-
October	-	-	-	-	-	-	-	-	-	-	-	-
November	-	-	-	-	-	-	-	-	-	-	-	-
December	-	-	-	-	-	-	-	-	-	-	-	-
<b>Total</b>	<b>35</b>	<b>133</b>	<b>-</b>	<b>168</b>	<b>58</b>	<b>93</b>	<b>-</b>	<b>151</b>	<b>67</b>	<b>104</b>	<b>-</b>	<b>171</b>

<sup>1</sup> Identifies whether the fatality resulted from an alcohol-involved crash.

Month to Month Comparison of Fatalities by Seat Belt Usage, 2021 to Date												
Month	2021 Fatalities				2020 Fatalities				2019 Fatalities			
	Seat Belt <sup>1</sup>			Total <sup>2</sup>	Seat Belt <sup>1</sup>			Total <sup>2</sup>	Seat Belt <sup>1</sup>			Total <sup>2</sup>
	Yes	No	Unk		Yes	No	Unk		Yes	No	Unk	
January	7	15	-	22	13	16	-	29	8	8	-	16
February	1	10	-	11	6	13	-	19	5	15	-	20
March	6	15	-	21	8	12	-	20	9	14	-	23
April	10	11	-	21	3	8	-	11	11	7	-	18
May	8	26	-	34	7	11	-	18	10	13	-	23
June	-	-	-	-	-	-	-	-	-	-	-	-
July	-	-	-	-	-	-	-	-	-	-	-	-
August	-	-	-	-	-	-	-	-	-	-	-	-
September	-	-	-	-	-	-	-	-	-	-	-	-
October	-	-	-	-	-	-	-	-	-	-	-	-
November	-	-	-	-	-	-	-	-	-	-	-	-
December	-	-	-	-	-	-	-	-	-	-	-	-
<b>Total</b>	<b>32</b>	<b>77</b>	<b>-</b>	<b>109</b>	<b>37</b>	<b>60</b>	<b>-</b>	<b>97</b>	<b>43</b>	<b>57</b>	<b>-</b>	<b>100</b>

<sup>1</sup> Identifies whether a vehicle occupant was belted (Yes), unbelted (No), or belt usage was not reported (Unk).

<sup>2</sup> Total vehicle occupant fatalities. Excludes motorcyclist, 4W/ATV, semi truck, pedestrian and pedalcyclist fatalities.

Fatalities by County and Month, 2021 to Date														
County	Jan.	Feb.	Mar.	Apr.	May	Jun.	Jul.	Aug.	Sep.	Oct.	Nov.	Dec.	2021 Total, to Date	2020 Total, to Date
Bernalillo	8	5	8	10	16	-	-	-	-	-	-	-	47	44
Catron	-	-	-	-	-	-	-	-	-	-	-	-	-	-
Chaves	1	-	-	2	-	-	-	-	-	-	-	-	3	4
Cibola	1	-	-	1	-	-	-	-	-	-	-	-	2	8
Colfax	1	-	-	2	-	-	-	-	-	-	-	-	3	2
Curry	1	-	-	-	4	-	-	-	-	-	-	-	5	-
De Baca	-	-	-	-	-	-	-	-	-	-	-	-	-	-
Doña Ana	2	2	-	2	1	-	-	-	-	-	-	-	7	13
Eddy	1	1	1	2	1	-	-	-	-	-	-	-	6	7
Grant	-	1	1	-	2	-	-	-	-	-	-	-	4	4
Guadalupe	-	1	-	-	-	-	-	-	-	-	-	-	1	-
Harding	-	-	-	-	-	-	-	-	-	-	-	-	-	-
Hidalgo	-	1	-	-	-	-	-	-	-	-	-	-	1	1
Lea	3	-	2	-	2	-	-	-	-	-	-	-	7	6
Lincoln	-	-	2	-	-	-	-	-	-	-	-	-	2	1
Los Alamos	-	-	-	-	1	-	-	-	-	-	-	-	1	-
Luna	-	-	1	-	4	-	-	-	-	-	-	-	5	3
McKinley	3	2	2	-	-	-	-	-	-	-	-	-	7	10
Mora	-	1	-	-	-	-	-	-	-	-	-	-	1	1
Otero	-	-	1	1	3	-	-	-	-	-	-	-	5	1
Quay	-	-	-	-	1	-	-	-	-	-	-	-	1	-
Rio Arriba	2	-	-	-	3	-	-	-	-	-	-	-	5	2
Roosevelt	-	1	1	-	-	-	-	-	-	-	-	-	2	1
San Juan	3	1	3	2	3	-	-	-	-	-	-	-	12	10
San Miguel	-	-	-	-	-	-	-	-	-	-	-	-	-	6
Sandoval	3	1	3	1	1	-	-	-	-	-	-	-	9	5
Santa Fe	4	-	3	1	1	-	-	-	-	-	-	-	9	12
Sierra	-	1	-	1	1	-	-	-	-	-	-	-	3	-
Socorro	1	-	1	3	1	-	-	-	-	-	-	-	6	2
Taos	-	-	2	2	2	-	-	-	-	-	-	-	6	3
Torrance	-	-	3	-	-	-	-	-	-	-	-	-	3	1
Union	-	-	-	-	-	-	-	-	-	-	-	-	-	1
Valencia	-	2	1	1	1	-	-	-	-	-	-	-	5	3
<b>Total</b>	<b>34</b>	<b>20</b>	<b>35</b>	<b>31</b>	<b>48</b>	<b>-</b>	<b>-</b>	<b>-</b>	<b>-</b>	<b>-</b>	<b>-</b>	<b>-</b>	<b>168</b>	<b>151</b>

Fatalities by County Relating to Alcohol, Belt Use, and Under 21 BAC, 2021 to Date							
County	Alcohol-involved Fatalities <sup>1</sup>		Unbelted Fatalities		Under 21 (15-20) with a BAC <sup>2</sup>		Total Fatalities
	Count	Percent <sup>3</sup>	Count	Percent <sup>3</sup>	Count	Percent <sup>3</sup>	
Bernalillo	10	21.3%	13	27.7%	-	0.0%	47
Catron	-	-	-	-	-	-	-
Chaves	2	66.7%	1	33.3%	-	0.0%	3
Cibola	-	0.0%	2	100.0%	-	0.0%	2
Colfax	1	33.3%	-	0.0%	-	0.0%	3
Curry	-	0.0%	2	40.0%	-	0.0%	5
De Baca	-	-	-	-	-	-	-
Doña Ana	2	28.6%	5	71.4%	-	0.0%	7
Eddy	2	33.3%	4	66.7%	-	0.0%	6
Grant	-	0.0%	1	25.0%	-	0.0%	4
Guadalupe	-	0.0%	1	100.0%	-	0.0%	1
Harding	-	-	-	-	-	-	-
Hidalgo	-	0.0%	-	0.0%	-	0.0%	1
Lea	-	0.0%	2	28.6%	-	0.0%	7
Lincoln	2	100.0%	2	100.0%	-	0.0%	2
Los Alamos	-	0.0%	-	0.0%	-	0.0%	1
Luna	-	0.0%	5	100.0%	-	0.0%	5
McKinley	3	42.9%	4	57.1%	-	0.0%	7
Mora	-	0.0%	1	100.0%	-	0.0%	1
Otero	3	60.0%	4	80.0%	-	0.0%	5
Quay	-	0.0%	-	0.0%	-	0.0%	1
Rio Arriba	-	0.0%	2	40.0%	-	0.0%	5
Roosevelt	-	0.0%	1	50.0%	-	0.0%	2
San Juan	2	16.7%	7	58.3%	-	0.0%	12
San Miguel	-	-	-	-	-	-	-
Sandoval	6	66.7%	6	66.7%	-	0.0%	9
Santa Fe	-	0.0%	5	55.6%	-	0.0%	9
Sierra	-	0.0%	1	33.3%	-	0.0%	3
Socorro	1	16.7%	2	33.3%	-	0.0%	6
Taos	1	16.7%	4	66.7%	-	0.0%	6
Torrance	-	0.0%	1	33.3%	-	0.0%	3
Union	-	-	-	-	-	-	-
Valencia	-	0.0%	1	20.0%	-	0.0%	5
<b>Total</b>	<b>35</b>	<b>20.8%</b>	<b>77</b>	<b>45.8%</b>	<b>-</b>	<b>0.0%</b>	<b>168</b>

<sup>1</sup> All fatalities in alcohol-involved crashes.

<sup>2</sup> Fatalities under 21 with a reported BAC (Blood Alcohol Content) above zero.

<sup>3</sup> Percentage based on total fatalities in the county.

Fatalities by Maintenance District and Month, 2021 to Date													
District	Jan.	Feb.	Mar.	Apr.	May	Jun.	Jul.	Aug.	Sep.	Oct.	Nov.	Dec.	Total
District 1	3	5	3	6	9	-	-	-	-	-	-	-	26
District 2	6	2	7	5	10	-	-	-	-	-	-	-	30
District 3	10	8	12	11	17	-	-	-	-	-	-	-	58
District 4	1	2	-	2	1	-	-	-	-	-	-	-	6
District 5	9	1	11	5	10	-	-	-	-	-	-	-	36
District 6	5	2	2	2	1	-	-	-	-	-	-	-	12
<b>Total</b>	<b>34</b>	<b>20</b>	<b>35</b>	<b>31</b>	<b>48</b>	<b>-</b>	<b>-</b>	<b>-</b>	<b>-</b>	<b>-</b>	<b>-</b>	<b>-</b>	<b>168</b>

Fatalities by Maintenance District Relating to Alcohol, Belt Use, and Under 21 BAC, 2021 to Date							
District	Alcohol-involved Fatalities <sup>1</sup>		Unbelted Fatalities		Under 21 (15-20) Fatalities with a BAC <sup>2</sup>		Total Fatalities
	Count	Percent <sup>3</sup>	Count	Percent <sup>3</sup>	Count	Percent <sup>3</sup>	
District 1	3	11.5%	14	53.8%	-	0.0%	26
District 2	9	30.0%	16	53.3%	-	0.0%	30
District 3	15	25.9%	18	31.0%	-	0.0%	58
District 4	1	16.7%	2	33.3%	-	0.0%	6
District 5	3	8.3%	19	52.8%	-	0.0%	36
District 6	4	33.3%	8	66.7%	-	0.0%	12
<b>Total</b>	<b>35</b>	<b>20.8%</b>	<b>77</b>	<b>45.8%</b>	<b>-</b>	<b>0.0%</b>	<b>168</b>

<sup>1</sup> All fatalities in alcohol-involved crashes.

<sup>2</sup> Fatalities under 21 with a reported BAC (Blood Alcohol Content) above zero.

<sup>3</sup> Percentage based on total fatalities in the district