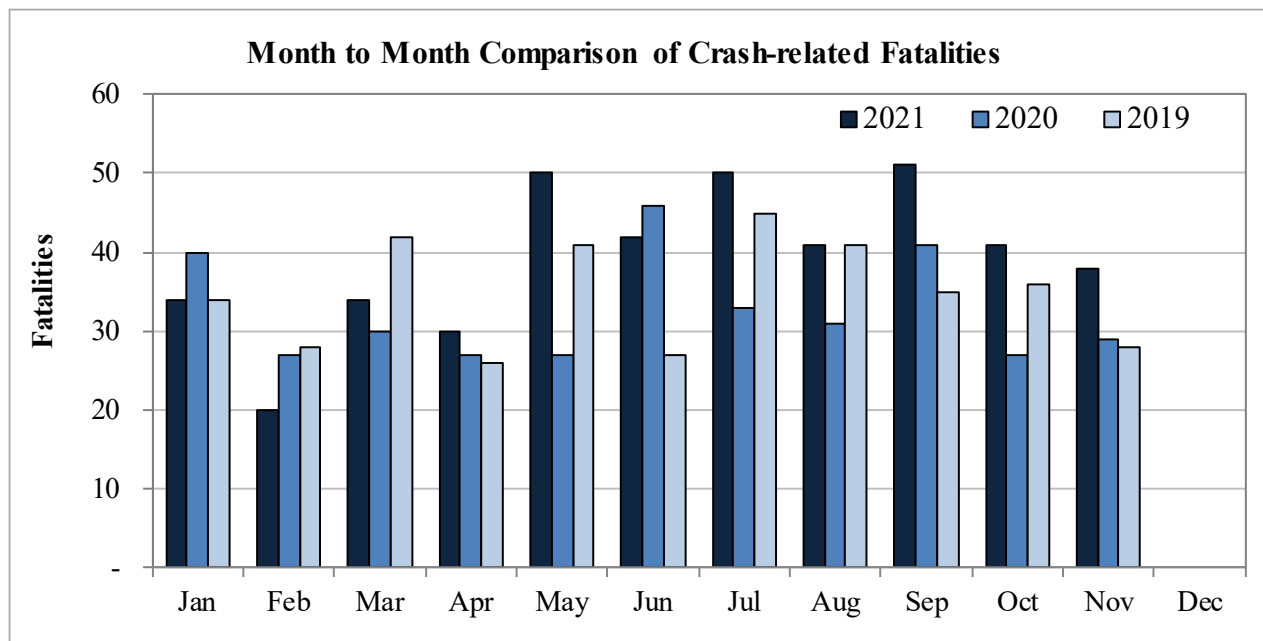


## New Mexico Monthly Traffic Fatality Report, 2021

Produced for the New Mexico Department of Transportation, Traffic Safety Division, Traffic Records Bureau,  
Under Contract No. 6093 by UNM Geospatial and Population Studies, Traffic Research Unit (TRU)

Fatalities by Month 2021, 2020, and 2019, 2021 to Date			
Month	2021	2020	2019
January	34	40	34
February	20	27	28
March	34	30	42
April	30	27	26
May	50	27	41
June	42	46	27
July	50	33	45
August	41	31	41
September	51	41	35
October	41	27	36
November	38	29	28
December	-	-	-
<b>Total</b>	<b>431</b>	<b>358</b>	<b>383</b>



Fatalities by Vehicle Type, 2021 to Date										
Month in 2021	Cars	Pickup Trucks	Semi Trucks, Buses	Vans, SUVs, Utility Vehicles	ATV (4W)	Motorcyclists	Pedestrians	Pedalcyclists	Vehicle Type Unknown or Other	Total Fatalities
January	9	7	1	6	-	1	10	-	-	34
February	4	5	2	2	-	1	5	1	-	20
March	8	11	-	3	-	6	5	1	-	34
April	13	-	-	8	-	5	4	-	-	30
May	16	10	1	8	1	5	8	-	1	50
June	11	7	4	6	3	6	5	-	-	42
July	15	8	2	9	2	4	9	1	-	50
August	10	4	1	9	-	4	10	1	2	41
September	14	4	3	10	-	8	12	-	-	51
October	9	7	1	8	1	4	9	1	1	41
November	6	7	4	2	1	6	11	1	-	38
December	-	-	-	-	-	-	-	-	-	-
<b>Total</b>	<b>115</b>	<b>70</b>	<b>19</b>	<b>71</b>	<b>8</b>	<b>50</b>	<b>88</b>	<b>6</b>	<b>4</b>	<b>431</b>

Fatalities by Alcohol Involvement <sup>1</sup> , 2021 to Date				
Month in 2021	Alcohol-involved <sup>1</sup>	Not Alcohol-involved	Alcohol Unknown	Total Fatalities
January	9	25	-	34
February	9	11	-	20
March	17	17	-	34
April	10	20	-	30
May	18	32	-	50
June	7	35	-	42
July	11	39	-	50
August	3	38	-	41
September	8	43	-	51
October	4	37	-	41
November	5	33	-	38
December	-	-	-	-
<b>Total</b>	<b>101</b>	<b>330</b>	<b>-</b>	<b>431</b>

<sup>1</sup> All fatalities in alcohol-involved crashes.

Alcohol-involved <sup>1</sup> Fatalities, 2021 to Date			
Month	2021	2020	2019
January	9	16	17
February	9	9	9
March	17	15	14
April	10	7	8
May	18	15	19
June	7	15	10
July	11	10	21
August	3	13	20
September	8	17	14
October	4	11	11
November	5	12	13
December	-	-	-
<b>Total</b>	<b>101</b>	<b>140</b>	<b>156</b>

<sup>1</sup> All fatalities in alcohol-involved crashes.

Fatalities Under 21, 2021 to Date	
Age	Fatalities
1	3
2	1
3	1
4	1
5	1
6	1
7	2
8	-
9	-
10	-
11	4
12	2
13	1
14	1
15	2
16	2
17	8
18	12
19	7
20	7
<b>Total</b>	<b>56</b>

Motorcyclist Helmet Usage <sup>1</sup> , 2021 to Date	
Helmet Usage	Fatalities
Yes	12
No	38
Unknown	-
<b>Total</b>	<b>50</b>

<sup>1</sup> Excludes 4W/ATV.

Senior (65+) Fatalities 2021 to Date	
Year	Fatalities
2021	53
2020	52
2019	52

Month in 2021	Total Fatalities, to Date	Alcohol-involved <sup>1</sup> Fatalities, 2021 to Date			
		Motorcyclist Fatalities	Percent Motorcyclist Fatalities	Pedestrian Fatalities	Percent Pedestrian Fatalities
January	34	1	2.9%	2	5.9%
February	20	-	0.0%	2	10.0%
March	34	2	5.9%	3	8.8%
April	30	2	0.0%	1	3.3%
May	50	1	2.0%	3	6.0%
June	42	1	2.4%	-	0.0%
July	50	-	0.0%	1	2.0%
August	41	-	0.0%	1	2.4%
September	51	1	2.0%	2	3.9%
October	41	-	0.0%	1	2.4%
November	38	-	0.0%	1	2.6%
December	-	-	-	-	-
<b>Total</b>	<b>431</b>	<b>8</b>	<b>1.9%</b>	<b>17</b>	<b>3.9%</b>

<sup>1</sup> All fatalities in alcohol-involved crashes.

Alcohol-involved <sup>1</sup> Fatalities, 2021 to Date		
Alcohol-involved	101	23%
Not Alcohol-involved	330	77%
Alcohol Unknown	-	-
<b>Total</b>	<b>431</b>	<b>100%</b>

<sup>1</sup> All fatalities in alcohol-involved crashes.

Fatalities by Vehicle <sup>1</sup> Occupant Seat Belt Usage, 2021 to Date				
Restraint	Yes	No	Unknown	Total
Seat Belt	82	173	1	256

<sup>1</sup> Total vehicle occupant fatalities. Excludes motorcyclist, 4W/ATV, semi truck, pedestrian and pedalcyclist fatalities.

Fatalities by Residency and Location, 2021 to Date				
Location	New Mexico Resident	Non-Resident	Unknown Residency	Total
Rural	119	67	1	187
Urban	218	26	-	244
Unknown	-	-	-	-
<b>Total</b>	<b>337</b>	<b>93</b>	<b>1</b>	<b>431</b>

Month to Month Comparison of Fatalities by Alcohol Involvement, 2021 to Date												
Month	2021 Fatalities				2020 Fatalities				2019 Fatalities			
	Alcohol-involved <sup>1</sup>			Total	Alcohol-involved <sup>1</sup>			Total	Alcohol-involved <sup>1</sup>			Total
	Yes	No	Unk		Yes	No	Unk		Yes	No	Unk	
January	9	25	-	34	16	24	-	40	17	17	-	34
February	9	11	-	20	9	18	-	27	9	19	-	28
March	17	17	-	34	15	15	-	30	14	28	-	42
April	10	20	-	30	7	20	-	27	8	18	-	26
May	18	32	-	50	15	12	-	27	19	22	-	41
June	7	35	-	42	15	31	-	46	10	17	-	27
July	11	39	-	50	10	23	-	33	21	24	-	45
August	3	38	-	41	13	18	-	31	20	21	-	41
September	8	43	-	51	17	24	-	41	14	21	-	35
October	4	37	-	41	11	16	-	27	11	25	-	36
November	5	33	-	38	12	17	-	29	13	15	-	28
December	-	-	-	-	-	-	-	-	-	-	-	-
<b>Total</b>	<b>101</b>	<b>330</b>	<b>-</b>	<b>431</b>	<b>140</b>	<b>218</b>	<b>-</b>	<b>358</b>	<b>156</b>	<b>227</b>	<b>-</b>	<b>383</b>

<sup>1</sup> Identifies whether the fatality resulted from an alcohol-involved crash.

Month to Month Comparison of Fatalities by Seat Belt Usage, 2021 to Date												
Month	2021 Fatalities				2020 Fatalities				2019 Fatalities			
	Seat Belt <sup>1</sup>			Total <sup>2</sup>	Seat Belt <sup>1</sup>			Total <sup>2</sup>	Seat Belt <sup>1</sup>			Total <sup>2</sup>
	Yes	No	Unk		Yes	No	Unk		Yes	No	Unk	
January	9	13	-	22	13	16	-	29	8	8	-	16
February	2	9	-	11	6	13	-	19	5	15	-	20
March	7	15	-	22	8	12	-	20	9	14	-	23
April	12	9	-	21	3	8	-	11	11	7	-	18
May	10	23	1	34	7	11	-	18	10	13	-	23
June	11	13	-	24	10	19	-	29	11	5	-	16
July	8	24	-	32	9	13	-	22	15	12	-	27
August	4	19	-	23	5	18	-	23	9	21	-	30
September	9	19	-	28	5	11	-	16	10	12	-	22
October	9	15	-	24	7	6	-	13	10	7	-	17
November	1	14	-	15	6	9	-	15	6	8	-	14
December	-	-	-	-	-	-	-	-	-	-	-	-
<b>Total</b>	<b>82</b>	<b>173</b>	<b>1</b>	<b>256</b>	<b>79</b>	<b>136</b>	<b>-</b>	<b>215</b>	<b>104</b>	<b>122</b>	<b>-</b>	<b>226</b>

<sup>1</sup> Identifies whether a vehicle occupant was belted (Yes), unbelted (No), or belt usage was not reported (Unk).

<sup>2</sup> Total vehicle occupant fatalities. Excludes motorcyclist, 4W/ATV, semi truck, pedestrian and pedalcyclist fatalities.

Fatalities by County and Month, 2021 to Date														
County	Jan.	Feb.	Mar.	Apr.	May	Jun.	Jul.	Aug.	Sep.	Oct.	Nov.	Dec.	2021 Total, to Date	2020 Total, to Date
Bernalillo	8	5	8	8	15	14	10	12	18	15	19	-	132	98
Catron	-	-	-	-	-	-	-	-	-	-	-	-	-	1
Chaves	1	-	-	2	-	2	-	1	-	-	-	-	6	9
Cibola	1	-	-	1	-	1	2	5	1	2	2	-	15	12
Colfax	1	-	-	2	-	-	-	-	-	1	1	-	5	3
Curry	1	-	-	-	5	-	-	1	-	1	-	-	8	7
De Baca	-	-	-	-	-	-	-	-	-	1	-	-	1	-
Doña Ana	2	2	-	2	1	1	-	3	3	-	-	-	14	19
Eddy	1	1	1	2	1	1	1	1	-	3	-	-	12	10
Grant	-	1	1	-	2	-	-	1	4	-	1	-	10	8
Guadalupe	-	1	-	-	-	1	-	1	-	-	2	-	5	3
Harding	-	-	-	-	-	-	-	-	-	-	-	-	-	-
Hidalgo	-	1	-	-	-	-	-	-	2	-	-	-	3	3
Lea	3	-	1	-	2	1	2	1	3	1	-	-	14	12
Lincoln	-	-	2	-	-	1	-	-	1	-	-	-	4	3
Los Alamos	-	-	-	-	1	-	-	-	1	-	1	-	3	1
Luna	-	-	1	-	4	1	3	4	3	1	1	-	18	6
McKinley	3	2	2	-	-	6	8	-	3	1	3	-	28	24
Mora	-	1	-	-	-	-	1	2	-	-	-	-	4	1
Otero	-	-	1	1	3	1	-	2	-	1	2	-	11	6
Quay	-	-	-	-	2	-	-	-	1	1	1	-	5	2
Rio Arriba	2	-	-	-	3	-	-	-	-	-	-	-	5	15
Roosevelt	-	1	1	-	-	-	-	1	-	1	-	-	4	1
San Juan	3	1	3	2	2	5	7	1	3	5	1	-	33	22
San Miguel	-	-	-	-	1	-	-	-	-	-	1	-	2	8
Sandoval	3	1	3	1	1	4	2	1	-	-	1	-	17	13
Santa Fe	4	-	2	1	1	-	5	1	3	2	1	-	20	30
Sierra	-	1	2	1	1	1	1	-	1	-	-	-	8	2
Socorro	1	-	1	4	2	-	1	1	-	-	-	-	10	10
Taos	-	-	2	2	2	1	-	1	2	2	1	-	13	13
Torrance	-	-	2	-	-	1	2	1	1	1	-	-	8	5
Union	-	-	-	-	-	-	2	-	-	-	-	-	2	2
Valencia	-	2	1	1	1	-	3	-	1	2	-	-	11	9
<b>Total</b>	<b>34</b>	<b>20</b>	<b>34</b>	<b>30</b>	<b>50</b>	<b>42</b>	<b>50</b>	<b>41</b>	<b>51</b>	<b>41</b>	<b>38</b>	<b>-</b>	<b>431</b>	<b>358</b>

Fatalities by County Relating to Alcohol, Belt Use, and Under 21 BAC, 2021 to Date							
County	Alcohol-involved Fatalities <sup>1</sup>		Unbelted Fatalities		Under 21 (15-20) with a BAC <sup>2</sup>		Total Fatalities
	Count	Percent <sup>3</sup>	Count	Percent <sup>3</sup>	Count	Percent <sup>3</sup>	
Bernalillo	25	18.9%	35	26.5%	-	0.0%	132
Catron	-	-	-	-	-	-	-
Chaves	2	33.3%	3	50.0%	-	0.0%	6
Cibola	2	13.3%	4	26.7%	-	0.0%	15
Colfax	1	20.0%	1	20.0%	-	0.0%	5
Curry	2	25.0%	3	37.5%	1	12.5%	8
De Baca	1	100.0%	-	0.0%	-	0.0%	1
Doña Ana	5	35.7%	9	64.3%	-	0.0%	14
Eddy	5	41.7%	7	58.3%	-	0.0%	12
Grant	1	10.0%	3	30.0%	-	0.0%	10
Guadalupe	1	20.0%	3	60.0%	-	0.0%	5
Harding	-	-	-	-	-	-	-
Hidalgo	-	0.0%	-	0.0%	-	0.0%	3
Lea	1	7.1%	6	42.9%	-	0.0%	14
Lincoln	2	50.0%	2	50.0%	-	0.0%	4
Los Alamos	-	0.0%	-	0.0%	-	0.0%	3
Luna	1	5.6%	11	61.1%	-	0.0%	18
McKinley	11	39.3%	13	46.4%	2	7.1%	28
Mora	2	50.0%	1	25.0%	-	0.0%	4
Otero	3	27.3%	7	63.6%	-	0.0%	11
Quay	2	40.0%	1	20.0%	-	0.0%	5
Rio Arriba	-	0.0%	2	40.0%	-	0.0%	5
Roosevelt	-	0.0%	3	75.0%	-	0.0%	4
San Juan	11	33.3%	17	51.5%	-	0.0%	33
San Miguel	-	0.0%	1	50.0%	-	0.0%	2
Sandoval	10	58.8%	7	41.2%	-	0.0%	17
Santa Fe	2	10.0%	7	35.0%	-	0.0%	20
Sierra	2	25.0%	5	62.5%	-	0.0%	8
Socorro	3	30.0%	3	30.0%	-	0.0%	10
Taos	4	30.8%	8	61.5%	-	0.0%	13
Torrance	1	12.5%	3	37.5%	-	0.0%	8
Union	-	0.0%	2	100.0%	-	0.0%	2
Valencia	1	9.1%	6	54.5%	-	0.0%	11
<b>Total</b>	<b>101</b>	<b>23.4%</b>	<b>173</b>	<b>40.1%</b>	<b>3</b>	<b>0.7%</b>	<b>431</b>

<sup>1</sup> All fatalities in alcohol-involved crashes.

<sup>2</sup> Fatalities under 21 with a reported BAC (Blood Alcohol Content) above zero.

<sup>3</sup> Percentage based on total fatalities in the county.

Fatalities by Maintenance District and Month, 2021 to Date													
District	Jan.	Feb.	Mar.	Apr.	May	Jun.	Jul.	Aug.	Sep.	Oct.	Nov.	Dec.	Total
District 1	3	5	5	7	10	3	5	9	13	1	2	-	63
District 2	6	2	6	5	11	6	3	7	4	8	2	-	60
District 3	10	8	12	10	17	18	15	13	19	17	20	-	159
District 4	1	2	-	2	3	1	3	3	1	2	5	-	23
District 5	9	1	9	5	9	7	14	4	10	10	4	-	82
District 6	5	2	2	1	-	7	10	5	4	3	5	-	44
<b>Total</b>	<b>34</b>	<b>20</b>	<b>34</b>	<b>30</b>	<b>50</b>	<b>42</b>	<b>50</b>	<b>41</b>	<b>51</b>	<b>41</b>	<b>38</b>	<b>-</b>	<b>431</b>

Fatalities by Maintenance District Relating to Alcohol, Belt Use, and Under 21 BAC, 2021 to Date							
District	Alcohol-involved Fatalities <sup>1</sup>		Unbelted Fatalities		Under 21 (15-20) Fatalities with a BAC <sup>2</sup>		Total Fatalities
	Count	Percent <sup>3</sup>	Count	Percent <sup>3</sup>	Count	Percent <sup>3</sup>	
District 1	12	19.0%	31	49.2%	-	0.0%	63
District 2	16	26.7%	31	51.7%	1	1.7%	60
District 3	36	22.6%	47	29.6%	-	0.0%	159
District 4	6	26.1%	9	39.1%	-	0.0%	23
District 5	18	22.0%	37	45.1%	-	0.0%	82
District 6	13	29.5%	18	40.9%	2	4.5%	44
<b>Total</b>	<b>101</b>	<b>23.4%</b>	<b>173</b>	<b>40.1%</b>	<b>3</b>	<b>0.7%</b>	<b>431</b>

<sup>1</sup> All fatalities in alcohol-involved crashes.

<sup>2</sup> Fatalities under 21 with a reported BAC (Blood Alcohol Content) above zero.

<sup>3</sup> Percentage based on total fatalities in the district

Motorcycle Fatalities by County and Month, 2021 to Date <sup>1</sup>														
County	Jan.	Feb.	Mar.	Apr.	May	Jun.	Jul.	Aug.	Sep.	Oct.	Nov.	Dec.	2021 Total, to Date	2020 Total, to Date
Bernalillo	1	-	2	3	2	4	4	2	4	1	3	-	26	13
Catron	-	-	-	-	-	-	-	-	-	-	-	-	-	-
Chaves	-	-	-	-	-	-	-	-	-	-	-	-	-	1
Cibola	-	-	-	-	-	-	-	-	1	1	-	-	2	1
Colfax	-	-	-	-	-	-	-	-	-	-	-	-	-	-
Curry	-	-	-	-	-	-	-	-	-	-	-	-	-	-
De Baca	-	-	-	-	-	-	-	-	-	-	-	-	-	-
Doña Ana	-	-	-	-	-	-	-	-	-	-	-	-	-	5
Eddy	-	-	-	-	-	-	-	-	-	1	-	-	1	-
Grant	-	-	-	-	-	-	-	-	-	-	-	-	-	1
Guadalupe	-	-	-	-	-	-	-	-	-	-	-	-	-	-
Harding	-	-	-	-	-	-	-	-	-	-	-	-	-	-
Hidalgo	-	-	-	-	-	-	-	-	-	-	-	-	-	-
Lea	-	-	-	-	-	-	-	-	-	-	-	-	-	-
Lincoln	-	-	-	-	-	1	-	-	1	-	-	-	2	1
Los Alamos	-	-	-	-	-	-	-	-	-	-	1	-	1	-
Luna	-	-	-	-	-	-	-	-	-	-	-	-	-	-
McKinley	-	-	-	-	-	-	-	-	-	-	-	-	-	2
Mora	-	-	-	-	-	-	-	-	-	-	-	-	-	-
Otero	-	-	1	-	-	-	-	1	-	-	-	-	2	2
Quay	-	-	-	-	1	-	-	-	-	1	-	-	2	-
Rio Arriba	-	-	-	-	1	-	-	-	-	-	-	-	1	3
Roosevelt	-	-	-	-	-	-	-	-	-	-	-	-	-	-
San Juan	-	-	-	-	1	1	-	-	1	-	-	-	3	4
San Miguel	-	-	-	-	-	-	-	-	-	-	-	-	-	-
Sandoval	-	-	-	1	-	-	-	-	-	-	1	-	2	4
Santa Fe	-	-	1	-	-	-	-	-	-	-	1	-	2	4
Sierra	-	-	-	1	-	-	-	-	-	-	-	-	1	-
Socorro	-	-	1	-	-	-	-	-	-	-	-	-	1	1
Taos	-	-	-	-	-	-	-	-	1	-	-	-	1	-
Torrance	-	-	-	-	-	-	-	1	-	-	-	-	1	-
Union	-	-	-	-	-	-	-	-	-	-	-	-	-	1
Valencia	-	1	1	-	-	-	-	-	-	-	-	-	2	3
<b>Total</b>	<b>1</b>	<b>1</b>	<b>6</b>	<b>5</b>	<b>5</b>	<b>6</b>	<b>4</b>	<b>4</b>	<b>8</b>	<b>4</b>	<b>6</b>	<b>-</b>	<b>50</b>	<b>46</b>

<sup>1</sup> The term motorcycle includes motorized scooters and mopeds, but excludes 4W/ATVs.



Motorcycle Fatalities by County Relating to Alcohol, Helmet Use, and Age, 2021 to Date <sup>1</sup>							
County	Alcohol-involved Fatalities <sup>2</sup>		Unhelmeted Fatalities		Fatalities Under Age 30 (Ages 15-29)		Total Fatalities
	Count	Percent <sup>3</sup>	Count	Percent <sup>3</sup>	Count	Percent <sup>3</sup>	
Bernalillo	5	19.2%	19	73.1%	13	50.0%	26
Catron	-	-	-	-	-	-	-
Chaves	-	-	-	-	-	-	-
Cibola	-	0.0%	1	50.0%	-	0.0%	2
Colfax	-	-	-	-	-	-	-
Curry	-	-	-	-	-	-	-
De Baca	-	-	-	-	-	-	-
Doña Ana	-	-	-	-	-	-	-
Eddy	-	0.0%	1	100.0%	-	0.0%	1
Grant	-	-	-	-	-	-	-
Guadalupe	-	-	-	-	-	-	-
Harding	-	-	-	-	-	-	-
Hidalgo	-	-	-	-	-	-	-
Lea	-	-	-	-	-	-	-
Lincoln	-	0.0%	2	100.0%	-	0.0%	2
Los Alamos	-	0.0%	-	0.0%	-	0.0%	1
Luna	-	-	-	-	-	-	-
McKinley	-	-	-	-	-	-	-
Mora	-	-	-	-	-	-	-
Otero	-	0.0%	1	50.0%	-	0.0%	2
Quay	1	50.0%	2	100.0%	1	50.0%	2
Rio Arriba	-	0.0%	1	100.0%	-	0.0%	1
Roosevelt	-	-	-	-	-	-	-
San Juan	-	0.0%	2	66.7%	-	0.0%	3
San Miguel	-	-	-	-	-	-	-
Sandoval	1	50.0%	1	50.0%	-	0.0%	2
Santa Fe	-	0.0%	2	100.0%	-	0.0%	2
Sierra	-	0.0%	1	100.0%	-	0.0%	1
Socorro	1	100.0%	1	100.0%	-	0.0%	1
Taos	-	0.0%	1	100.0%	-	0.0%	1
Torrance	-	0.0%	1	100.0%	-	0.0%	1
Union	-	-	-	-	-	-	-
Valencia	-	0.0%	2	100.0%	2	0.0%	2
<b>Total</b>	<b>8</b>	<b>16.0%</b>	<b>38</b>	<b>76.0%</b>	<b>16</b>	<b>32.0%</b>	<b>50</b>

<sup>1</sup> The term motorcycle includes motorized scooters and mopeds, but excludes 4W/ATVs.

<sup>2</sup> All motorcycle fatalities in alcohol-involved crashes.

<sup>3</sup> Percentage based on total motorcycle fatalities in the county.