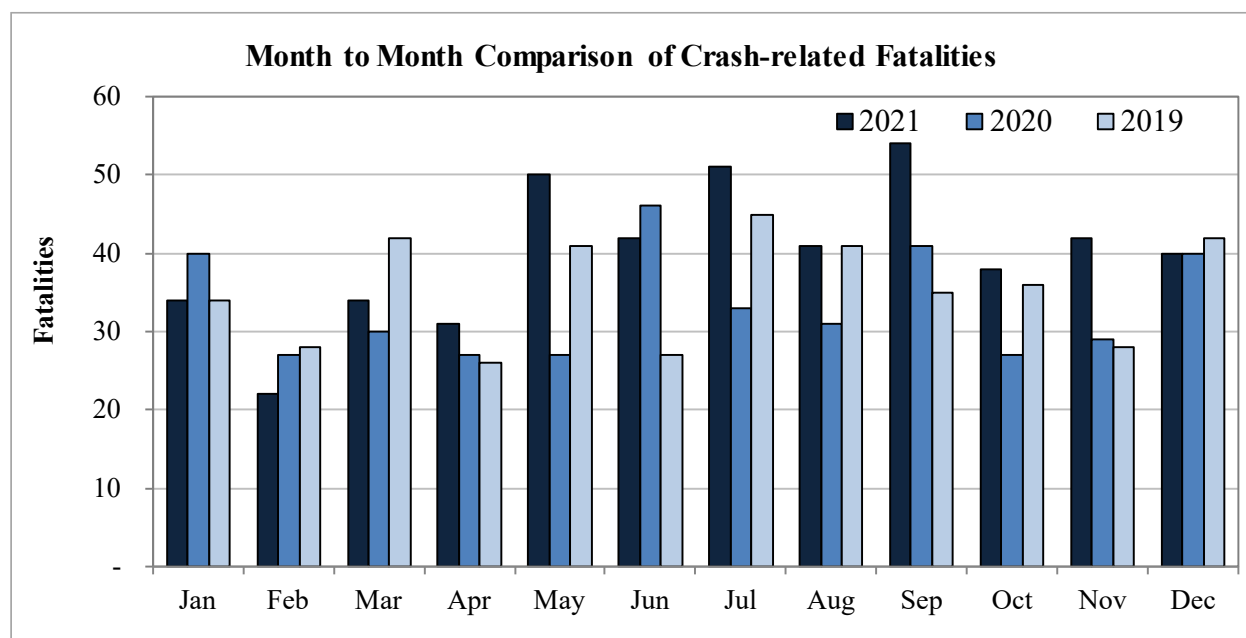


## New Mexico Monthly Traffic Fatality Report, 2021

Produced for the New Mexico Department of Transportation, Traffic Safety Division, Traffic Records Bureau,  
Under Contract No. 6093 by UNM Geospatial and Population Studies, Traffic Research Unit (TRU)

Fatalities by Month 2021, 2020, and 2019			
Month	2021	2020	2019
January	34	40	34
February	22	27	28
March	34	30	42
April	31	27	26
May	50	27	41
June	42	46	27
July	51	33	45
August	41	31	41
September	54	41	35
October	38	27	36
November	42	29	28
December	40	40	42
<b>Total</b>	<b>479</b>	<b>398</b>	<b>425</b>



Fatalities by Vehicle Type, 2021										
Month in 2021	Cars	Pickup Trucks	Semi Trucks, Buses	Vans, SUVs, Utility Vehicles	ATV (4W)	Motorcyclists	Pedestrians	Pedalcyclists	Vehicle Type Unknown or Other	Total Fatalities
January	9	8	-	6	-	1	10	-	-	34
February	4	6	2	2	-	1	6	1	-	22
March	8	11	-	3	-	6	5	1	-	34
April	13	-	-	8	-	5	5	-	-	31
May	15	10	2	8	1	5	8	-	1	50
June	11	7	4	6	3	6	5	-	-	42
July	14	9	2	9	2	5	9	1	-	51
August	10	4	1	9	-	4	10	1	2	41
September	16	4	3	10	-	9	12	-	-	54
October	7	8	1	8	-	4	9	1	-	38
November	8	8	4	2	1	6	12	1	-	42
December	10	7	1	7	-	3	12	-	-	40
<b>Total</b>	<b>125</b>	<b>82</b>	<b>20</b>	<b>78</b>	<b>7</b>	<b>55</b>	<b>103</b>	<b>6</b>	<b>3</b>	<b>479</b>

Fatalities by Alcohol Involvement <sup>1</sup> , 2021				
Month in 2021	Alcohol-involved <sup>1</sup>	Not Alcohol-involved	Alcohol Unknown	Total Fatalities
January	12	22	-	34
February	10	12	-	22
March	17	17	-	34
April	11	20	-	31
May	17	33	-	50
June	9	33	-	42
July	17	34	-	51
August	11	30	-	41
September	18	36	-	54
October	8	30	-	38
November	19	23	-	42
December	8	32	-	40
<b>Total</b>	<b>157</b>	<b>322</b>	<b>-</b>	<b>479</b>

Alcohol-involved <sup>1</sup> Fatalities, 2021			
Month	2021	2020	2019
January	12	16	16
February	10	9	9
March	17	15	14
April	11	7	8
May	17	15	19
June	9	15	10
July	17	10	21
August	11	13	20
September	18	17	14
October	8	11	11
November	19	12	13
December	8	5	21
<b>Total</b>	<b>157</b>	<b>145</b>	<b>176</b>

<sup>1</sup> All fatalities in alcohol-involved crashes.

<sup>1</sup> All fatalities in alcohol-involved crashes.

Fatalities Under 21, 2021	
Age	Fatalities
1	3
2	1
3	1
4	1
5	1
6	2
7	3
8	1
9	-
10	-
11	4
12	2
13	1
14	1
15	2
16	2
17	8
18	12
19	8
20	6
<b>Total</b>	<b>59</b>

Motorcyclist Helmet Usage <sup>1</sup> , 2021	
Helmet Usage	Fatalities
Yes	14
No	41
Unknown	-
<b>Total</b>	<b>55</b>

<sup>1</sup> Excludes 4W/ATV.

Senior (65+) Fatalities 2021	
Year	Fatalities
2021	60
2020	57
2019	57

Month in 2021	Total Fatalities, to Date	Alcohol-involved <sup>1</sup> Fatalities, 2021			
		Motorcyclist Fatalities	Percent Motorcyclist Fatalities	Pedestrian Fatalities	Percent Pedestrian Fatalities
January	34	-	0.0%	4	11.8%
February	22	-	0.0%	3	13.6%
March	34	2	5.9%	3	8.8%
April	31	2	0.0%	2	6.5%
May	50	1	2.0%	3	6.0%
June	42	1	2.4%	-	0.0%
July	51	1	2.0%	2	3.9%
August	41	-	0.0%	5	12.2%
September	54	3	5.6%	4	7.4%
October	38	-	0.0%	2	5.3%
November	42	3	7.1%	6	14.3%
December	40	1	0.0%	1	2.5%
<b>Total</b>	<b>479</b>	<b>14</b>	<b>2.9%</b>	<b>35</b>	<b>7.3%</b>

<sup>1</sup> All fatalities in alcohol-involved crashes.

Alcohol-involved <sup>1</sup> Fatalities, 2021		
Alcohol-involved	157	33%
Not Alcohol-involved	322	67%
Alcohol Unknown	-	-
<b>Total</b>	<b>479</b>	<b>100%</b>

<sup>1</sup> All fatalities in alcohol-involved crashes.

Fatalities by Vehicle <sup>1</sup> Occupant Seat Belt Usage, 2021				
Restraint	Yes	No	Unknown	Total
Seat Belt	92	193	-	285

<sup>1</sup> Total vehicle occupant fatalities. Excludes motorcyclist, 4W/ATV, semi truck, pedestrian and pedalcyclist fatalities.

Fatalities by Residency and Location, 2021				
Location	New Mexico Resident	Non-Resident	Unknown Residency	Total
Rural	134	73	2	209
Urban	243	27	-	270
Unknown	-	-	-	-
<b>Total</b>	<b>377</b>	<b>100</b>	<b>2</b>	<b>479</b>

Month to Month Comparison of Fatalities by Alcohol Involvement, 2021												
Month	2021 Fatalities				2020 Fatalities				2019 Fatalities			
	Alcohol-involved <sup>1</sup>			Total	Alcohol-involved <sup>1</sup>			Total	Alcohol-involved <sup>1</sup>			Total
	Yes	No	Unk		Yes	No	Unk		Yes	No	Unk	
January	12	22	-	34	16	24	-	40	16	17	1	34
February	10	12	-	22	9	18	-	27	9	19	-	28
March	17	17	-	34	15	15	-	30	14	28	-	42
April	11	20	-	31	7	20	-	27	8	18	-	26
May	17	33	-	50	15	12	-	27	19	22	-	41
June	9	33	-	42	15	31	-	46	10	17	-	27
July	17	34	-	51	10	23	-	33	21	24	-	45
August	11	30	-	41	13	18	-	31	20	21	-	41
September	18	36	-	54	17	24	-	41	14	21	-	35
October	8	30	-	38	11	16	-	27	11	25	-	36
November	19	23	-	42	12	17	-	29	13	15	-	28
December	8	32	-	40	5	35	-	40	21	21	-	42
<b>Total</b>	<b>157</b>	<b>322</b>	<b>-</b>	<b>479</b>	<b>145</b>	<b>253</b>	<b>-</b>	<b>398</b>	<b>176</b>	<b>248</b>	<b>1</b>	<b>425</b>

<sup>1</sup> Identifies whether the fatality resulted from an alcohol-involved crash.

Month to Month Comparison of Fatalities by Seat Belt Usage, 2021												
Month	2021 Fatalities				2020 Fatalities				2019 Fatalities			
	Seat Belt <sup>1</sup>			Total <sup>2</sup>	Seat Belt <sup>1</sup>			Total <sup>2</sup>	Seat Belt <sup>1</sup>			Total <sup>2</sup>
	Yes	No	Unk		Yes	No	Unk		Yes	No	Unk	
January	10	13	-	23	13	16	-	29	8	8	-	16
February	2	10	-	12	6	13	-	19	5	15	-	20
March	7	15	-	22	8	12	-	20	9	14	-	23
April	12	9	-	21	3	8	-	11	11	7	-	18
May	12	21	-	33	7	11	-	18	10	13	-	23
June	11	13	-	24	10	19	-	29	11	5	-	16
July	8	24	-	32	9	13	-	22	15	12	-	27
August	4	19	-	23	5	18	-	23	9	21	-	30
September	10	20	-	30	5	11	-	16	10	12	-	22
October	8	15	-	23	7	6	-	13	10	7	-	17
November	2	16	-	18	6	9	-	15	6	8	-	14
December	6	18	-	24	6	23	-	29	10	19	-	29
<b>Total</b>	<b>92</b>	<b>193</b>	<b>-</b>	<b>285</b>	<b>85</b>	<b>159</b>	<b>-</b>	<b>244</b>	<b>114</b>	<b>141</b>	<b>-</b>	<b>255</b>

<sup>1</sup> Identifies whether a vehicle occupant was belted (Yes), unbelted (No), or belt usage was not reported (Unk).

<sup>2</sup> Total vehicle occupant fatalities. Excludes motorcyclist, 4W/ATV, semi truck, pedestrian and pedalcyclist fatalities.

Fatalities by County and Month, 2021														
County	Jan.	Feb.	Mar.	Apr.	May	Jun.	Jul.	Aug.	Sep.	Oct.	Nov.	Dec.	2021 Total	2020 Total
Bernalillo	8	4	8	8	15	14	10	12	19	13	20	14	145	109
Catron	-	-	-	-	-	-	-	-	1	-	-	-	1	1
Chaves	1	-	-	2	-	2	-	1	-	-	-	2	8	12
Cibola	1	-	-	1	-	1	5	5	1	2	3	1	20	15
Colfax	1	-	-	2	-	-	-	-	-	1	1	-	5	3
Curry	1	-	-	-	5	-	-	1	-	1	-	1	9	7
De Baca	-	-	-	-	-	-	-	-	-	1	-	-	1	-
Doña Ana	2	2	-	2	1	1	-	3	3	-	-	2	16	20
Eddy	1	1	1	2	1	1	1	1	-	3	-	1	13	10
Grant	-	1	1	-	2	-	-	1	4	-	1	-	10	9
Guadalupe	-	1	-	-	-	1	-	1	-	-	2	2	7	7
Harding	-	-	-	-	-	-	-	-	-	-	-	-	-	-
Hidalgo	-	1	-	-	-	-	-	-	2	-	-	-	3	3
Lea	3	-	1	-	2	1	2	1	3	1	-	-	14	14
Lincoln	-	-	2	-	-	1	-	-	1	-	-	-	4	4
Los Alamos	-	-	-	-	1	-	-	-	1	-	1	-	3	2
Luna	-	1	1	-	4	1	3	4	3	1	1	3	22	8
McKinley	3	4	2	1	-	6	7	-	3	1	4	-	31	24
Mora	-	1	-	-	-	-	1	2	-	-	-	-	4	1
Otero	-	-	1	1	3	1	-	2	-	1	2	2	13	6
Quay	-	-	-	-	2	-	-	-	1	1	1	3	8	3
Rio Arriba	2	-	-	-	3	-	-	-	-	-	-	2	7	16
Roosevelt	-	1	1	-	-	-	-	1	-	1	-	-	4	2
San Juan	3	1	3	2	2	5	6	1	4	5	1	-	33	24
San Miguel	-	-	-	-	1	-	-	-	-	-	1	-	2	8
Sandoval	3	1	3	1	1	4	2	1	-	-	1	1	18	14
Santa Fe	4	-	2	1	1	-	5	1	3	1	1	2	21	31
Sierra	-	1	2	1	1	1	1	-	1	-	-	1	9	2
Socorro	1	-	1	4	2	-	1	1	-	-	-	2	12	11
Taos	-	-	2	2	2	1	-	1	2	2	1	-	13	15
Torrance	-	-	2	-	-	1	2	1	1	1	-	1	9	6
Union	-	-	-	-	-	-	2	-	-	-	-	-	2	2
Valencia	-	2	1	1	1	-	3	-	1	2	1	-	12	9
<b>Total</b>	<b>34</b>	<b>22</b>	<b>34</b>	<b>31</b>	<b>50</b>	<b>42</b>	<b>51</b>	<b>41</b>	<b>54</b>	<b>38</b>	<b>42</b>	<b>40</b>	<b>479</b>	<b>398</b>

Fatalities by County Relating to Alcohol, Belt Use, and Under 21 BAC, 2021							
County	Alcohol-involved Fatalities <sup>1</sup>		Unbelted Fatalities		Under 21 (15-20) with a BAC <sup>2</sup>		Total Fatalities
	Count	Percent <sup>3</sup>	Count	Percent <sup>3</sup>	Count	Percent <sup>3</sup>	
Bernalillo	40	27.6%	38	26.2%	1	0.7%	145
Catron	-	0.0%	-	0.0%	-	0.0%	1
Chaves	1	12.5%	4	50.0%	-	0.0%	8
Cibola	8	40.0%	9	45.0%	2	10.0%	20
Colfax	1	20.0%	1	20.0%	-	0.0%	5
Curry	2	22.2%	3	33.3%	1	11.1%	9
De Baca	-	0.0%	-	0.0%	-	0.0%	1
Doña Ana	6	37.5%	10	62.5%	1	6.3%	16
Eddy	7	53.8%	7	53.8%	-	0.0%	13
Grant	2	20.0%	3	30.0%	-	0.0%	10
Guadalupe	2	28.6%	4	57.1%	-	0.0%	7
Harding	-	-	-	-	-	-	-
Hidalgo	-	0.0%	-	0.0%	-	0.0%	3
Lea	3	21.4%	6	42.9%	-	0.0%	14
Lincoln	2	50.0%	2	50.0%	-	0.0%	4
Los Alamos	1	33.3%	-	0.0%	-	0.0%	3
Luna	7	31.8%	10	45.5%	-	0.0%	22
McKinley	13	41.9%	13	41.9%	-	0.0%	31
Mora	2	50.0%	1	25.0%	-	0.0%	4
Otero	4	30.8%	7	53.8%	-	0.0%	13
Quay	2	25.0%	4	50.0%	-	0.0%	8
Rio Arriba	-	0.0%	3	42.9%	-	0.0%	7
Roosevelt	-	0.0%	3	75.0%	-	0.0%	4
San Juan	18	54.5%	17	51.5%	-	0.0%	33
San Miguel	1	50.0%	1	50.0%	-	0.0%	2
Sandoval	11	61.1%	7	38.9%	-	0.0%	18
Santa Fe	5	23.8%	8	38.1%	-	0.0%	21
Sierra	2	22.2%	6	66.7%	-	0.0%	9
Socorro	3	25.0%	5	41.7%	-	0.0%	12
Taos	9	69.2%	8	61.5%	2	15.4%	13
Torrance	2	22.2%	4	44.4%	-	0.0%	9
Union	-	0.0%	2	100.0%	-	0.0%	2
Valencia	3	25.0%	7	58.3%	1	0.0%	12
<b>Total</b>	<b>157</b>	<b>32.8%</b>	<b>193</b>	<b>40.3%</b>	<b>8</b>	<b>1.7%</b>	<b>479</b>

<sup>1</sup> All fatalities in alcohol-involved crashes.

<sup>2</sup> Fatalities under 21 with a reported BAC (Blood Alcohol Content) above zero.

<sup>3</sup> Percentage based on total fatalities in the county.

Fatalities by Maintenance District and Month, 2021													
District	Jan.	Feb.	Mar.	Apr.	May	Jun.	Jul.	Aug.	Sep.	Oct.	Nov.	Dec.	Total
District 1	3	6	5	7	10	3	5	9	13	1	2	8	72
District 2	6	2	6	5	11	6	3	7	4	8	2	6	66
District 3	10	7	12	10	16	18	15	13	20	15	22	15	173
District 4	1	2	-	2	3	1	3	3	1	2	5	5	28
District 5	9	1	9	5	9	7	13	4	11	9	4	5	86
District 6	5	4	2	2	1	7	12	5	5	3	7	1	54
<b>Total</b>	<b>34</b>	<b>22</b>	<b>34</b>	<b>31</b>	<b>50</b>	<b>42</b>	<b>51</b>	<b>41</b>	<b>54</b>	<b>38</b>	<b>42</b>	<b>40</b>	<b>479</b>

Fatalities by Maintenance District Relating to Alcohol, Belt Use, and Under 21 BAC, 2021							
District	Alcohol-involved Fatalities <sup>1</sup>		Unbelted Fatalities		Under 21 (15-20) Fatalities with a BAC <sup>2</sup>		Total Fatalities
	Count	Percent <sup>3</sup>	Count	Percent <sup>3</sup>	Count	Percent <sup>3</sup>	
District 1	20	27.8%	34	47.2%	1	1.4%	72
District 2	19	28.8%	32	48.5%	1	1.5%	66
District 3	52	30.1%	50	28.9%	2	1.2%	173
District 4	8	28.6%	13	46.4%	-	0.0%	28
District 5	35	40.7%	40	46.5%	2	2.3%	86
District 6	23	42.6%	24	44.4%	2	3.7%	54
<b>Total</b>	<b>157</b>	<b>32.8%</b>	<b>193</b>	<b>40.3%</b>	<b>8</b>	<b>1.7%</b>	<b>479</b>

<sup>1</sup> All fatalities in alcohol-involved crashes.

<sup>2</sup> Fatalities under 21 with a reported BAC (Blood Alcohol Content) above zero.

<sup>3</sup> Percentage based on total fatalities in the district

Motorcycle Fatalities <sup>1</sup> by County and Month, 2021														
County	Jan.	Feb.	Mar.	Apr.	May	Jun.	Jul.	Aug.	Sep.	Oct.	Nov.	Dec.	2021 Total	2020 Total
Bernalillo	1	-	2	3	2	4	4	2	4	1	3	1	27	13
Catron	-	-	-	-	-	-	-	-	1	-	-	-	1	-
Chaves	-	-	-	-	-	-	-	-	-	-	-	-	-	1
Cibola	-	-	-	-	-	-	-	-	1	1	-	-	2	1
Colfax	-	-	-	-	-	-	-	-	-	-	-	-	-	-
Curry	-	-	-	-	-	-	-	-	-	-	-	-	-	-
De Baca	-	-	-	-	-	-	-	-	-	-	-	-	-	-
Doña Ana	-	-	-	-	-	-	-	-	-	-	-	-	-	5
Eddy	-	-	-	-	-	-	-	-	-	1	-	1	2	-
Grant	-	-	-	-	-	-	-	-	-	-	-	-	-	1
Guadalupe	-	-	-	-	-	-	-	-	-	-	-	-	-	-
Harding	-	-	-	-	-	-	-	-	-	-	-	-	-	-
Hidalgo	-	-	-	-	-	-	-	-	-	-	-	-	-	-
Lea	-	-	-	-	-	-	-	-	-	-	-	-	-	-
Lincoln	-	-	-	-	-	1	-	-	1	-	-	-	2	1
Los Alamos	-	-	-	-	-	-	-	-	-	-	1	-	1	-
Luna	-	-	-	-	-	-	-	-	-	-	-	1	1	-
McKinley	-	-	-	-	-	-	1	-	-	-	-	-	1	2
Mora	-	-	-	-	-	-	-	-	-	-	-	-	-	-
Otero	-	-	1	-	-	-	-	1	-	-	-	-	2	2
Quay	-	-	-	-	1	-	-	-	-	1	-	-	2	-
Rio Arriba	-	-	-	-	1	-	-	-	-	-	-	-	1	3
Roosevelt	-	-	-	-	-	-	-	-	-	-	-	-	-	-
San Juan	-	-	-	-	1	1	-	-	1	-	-	-	3	4
San Miguel	-	-	-	-	-	-	-	-	-	-	-	-	-	-
Sandoval	-	-	-	1	-	-	-	-	-	-	1	-	2	4
Santa Fe	-	-	1	-	-	-	-	-	-	-	1	-	2	4
Sierra	-	-	-	1	-	-	-	-	-	-	-	-	1	-
Socorro	-	-	1	-	-	-	-	-	-	-	-	-	1	1
Taos	-	-	-	-	-	-	-	-	1	-	-	-	1	-
Torrance	-	-	-	-	-	-	-	1	-	-	-	-	1	-
Union	-	-	-	-	-	-	-	-	-	-	-	-	-	1
Valencia	-	1	1	-	-	-	-	-	-	-	-	-	2	3
<b>Total</b>	<b>1</b>	<b>1</b>	<b>6</b>	<b>5</b>	<b>5</b>	<b>6</b>	<b>5</b>	<b>4</b>	<b>9</b>	<b>4</b>	<b>6</b>	<b>3</b>	<b>55</b>	<b>46</b>

<sup>1</sup> The term motorcycle includes motorized scooters and mopeds, but excludes 4W/ATVs.



Motorcycle Fatalities <sup>1</sup> by County Relating to Alcohol, Helmet Use, and Age, 2021							
County	Alcohol-involved Fatalities <sup>2</sup>		Unhelmeted Fatalities		Fatalities Under Age 30 (Ages 15-29)		Total Fatalities
	Count	Percent <sup>3</sup>	Count	Percent <sup>3</sup>	Count	Percent <sup>3</sup>	
Bernalillo	7	25.9%	19	70.4%	6	22.2%	27
Catron	-	0.0%	1	100.0%	-	0.0%	1
Chaves	-	-	-	-	-	-	-
Cibola	-	0.0%	1	50.0%	-	0.0%	2
Colfax	-	-	-	-	-	-	-
Curry	-	-	-	-	-	-	-
De Baca	-	-	-	-	-	-	-
Doña Ana	-	-	-	-	-	-	-
Eddy	1	50.0%	2	100.0%	-	0.0%	2
Grant	-	-	-	-	-	-	-
Guadalupe	-	-	-	-	-	-	-
Harding	-	-	-	-	-	-	-
Hidalgo	-	-	-	-	-	-	-
Lea	-	-	-	-	-	-	-
Lincoln	-	0.0%	2	100.0%	-	0.0%	2
Los Alamos	1	100.0%	-	0.0%	-	0.0%	1
Luna	-	0.0%	1	100.0%	-	0.0%	1
McKinley	-	0.0%	-	0.0%	-	0.0%	1
Mora	-	-	-	-	-	-	-
Otero	-	0.0%	1	50.0%	-	0.0%	2
Quay	1	50.0%	2	100.0%	1	50.0%	2
Rio Arriba	-	0.0%	1	100.0%	-	0.0%	1
Roosevelt	-	-	-	-	-	-	-
San Juan	1	33.3%	2	66.7%	-	0.0%	3
San Miguel	-	-	-	-	-	-	-
Sandoval	1	50.0%	1	50.0%	-	0.0%	2
Santa Fe	-	0.0%	2	100.0%	-	0.0%	2
Sierra	-	0.0%	1	100.0%	-	0.0%	1
Socorro	1	100.0%	1	100.0%	-	0.0%	1
Taos	1	100.0%	1	100.0%	-	0.0%	1
Torrance	-	0.0%	1	100.0%	-	0.0%	1
Union	-	-	-	-	-	-	-
Valencia	-	0.0%	2	100.0%	-	0.0%	2
<b>Total</b>	<b>14</b>	<b>25.5%</b>	<b>41</b>	<b>74.5%</b>	<b>7</b>	<b>12.7%</b>	<b>55</b>

<sup>1</sup> The term motorcycle includes motorized scooters and mopeds, but excludes 4W/ATVs.

<sup>2</sup> All motorcycle fatalities in alcohol-involved crashes.

<sup>3</sup> Percentage based on total motorcycle fatalities in the county.