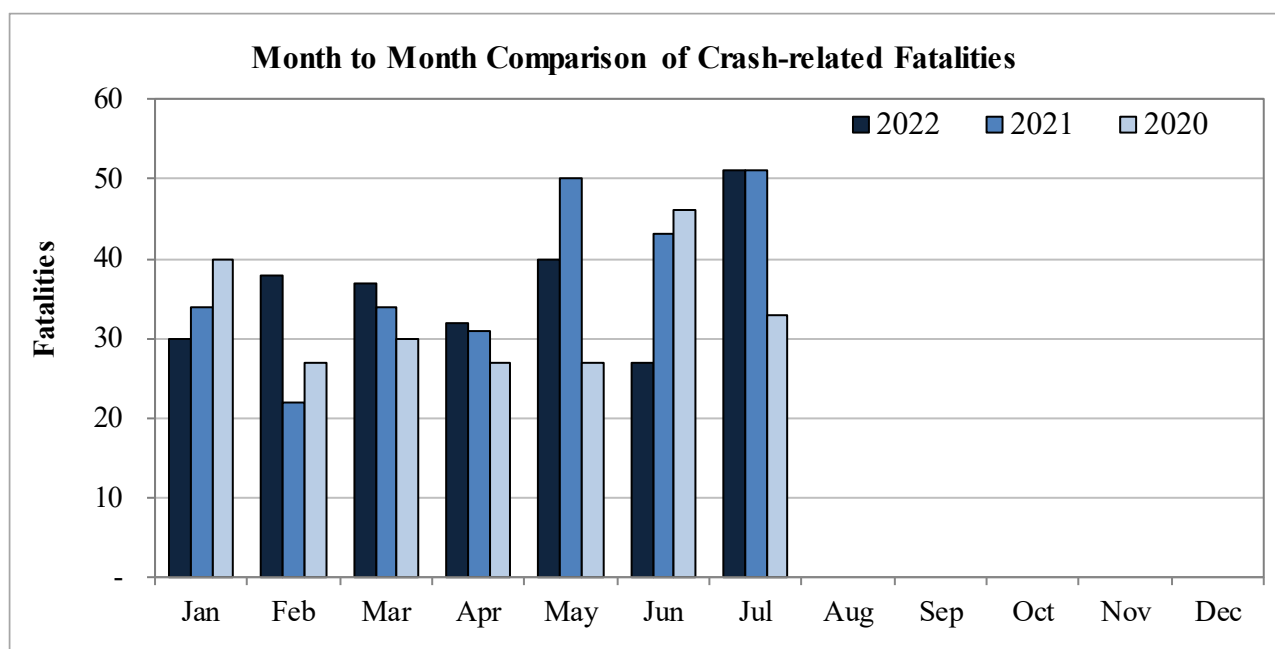


New Mexico Monthly Traffic Fatality Report, 2022

Produced for the New Mexico Department of Transportation, Traffic Safety Division, Traffic Records Bureau,
Under Contract No. 6093 by UNM Geospatial and Population Studies, Traffic Research Unit (TRU)

Fatalities by Month 2022, 2021, 2020 Year to Date			
Month	2022	2021	2020
January	30	34	40
February	38	22	27
March	37	34	30
April	32	31	27
May	40	50	27
June	27	43	46
July	51	51	33
August	-	-	-
September	-	-	-
October	-	-	-
November	-	-	-
December	-	-	-
Total	255	265	230



Fatalities by Vehicle Type, 2022 to Date										
Month in 2021	Cars	Pickup Trucks	Semi Trucks, Buses	Vans, SUVs, Utility Vehicles	ATV (4W)	Motorcyclists	Pedestrians	Pedalcyclists	Vehicle Type Unknown or Other	Total Fatalities
January	7	3	-	6	-	2	11	1	-	30
February	9	7	3	7	1	2	9	-	-	38
March	14	7	-	3	-	6	7	-	-	37
April	9	10	1	6	-	3	3	-	-	32
May	12	5	2	8	-	10	2	-	1	40
June	6	3	1	6	-	3	8	-	-	27
July	25	6	2	8	-	5	4	1	-	51
August	-	-	-	-	-	-	-	-	-	-
September	-	-	-	-	-	-	-	-	-	-
October	-	-	-	-	-	-	-	-	-	-
November	-	-	-	-	-	-	-	-	-	-
December	-	-	-	-	-	-	-	-	-	-
Total	82	41	9	44	1	31	44	2	1	255

Fatalities by Alcohol Involvement ¹ , 2022 to Date				
Month in 2022	Alcohol-involved ¹	Not Alcohol-involved	Alcohol Unknown	Total Fatalities
January	10	20	-	30
February	8	30	-	38
March	13	24	-	37
April	3	29	-	32
May	5	35	-	40
June	2	25	-	27
July	9	42	-	51
August	-	-	-	-
September	-	-	-	-
October	-	-	-	-
November	-	-	-	-
December	-	-	-	-
Total	50	205	-	255

¹ All fatalities in alcohol-involved crashes.

Alcohol-involved Fatalities ¹ , 2022 to Date			
Month	2022	2021	2020
January	10	12	16
February	8	11	9
March	13	17	15
April	3	12	7
May	5	18	15
June	2	10	15
July	9	19	10
August	-	-	-
September	-	-	-
October	-	-	-
November	-	-	-
December	-	-	-
Total	50	99	87

¹ All fatalities in alcohol-involved crashes.

Fatalities Under 21, 2022 to Date	
Age	Fatalities
1	1
2	-
3	-
4	1
5	1
6	1
7	-
8	-
9	1
10	1
11	-
12	-
13	-
14	-
15	-
16	1
17	3
18	9
19	7
20	6
Total	32

Month in 2022	Total Fatalities, to Date	Alcohol-involved Fatalities ¹ , 2022 to Date			
		Motorcyclist Fatalities	Percent Motorcyclist Fatalities	Pedestrian Fatalities	Percent Pedestrian Fatalities
January	30	-	0.0%	5	16.7%
February	38	1	0.0%	2	0.0%
March	37	1	0.0%	3	0.0%
April	32	-	0.0%	1	0.0%
May	40	1	0.0%	-	0.0%
June	27	-	0.0%	-	0.0%
July	51	1	0.0%	-	0.0%
August	-	-	0.0%	-	0.0%
September	-	-	0.0%	-	0.0%
October	-	-	0.0%	-	0.0%
November	-	-	0.0%	-	0.0%
December	-	-	0.0%	-	0.0%
Total	255	4	1.6%	11	4.3%

¹ All fatalities in alcohol-involved crashes.

Alcohol-involved Fatalities ¹ , 2022 to Date		
Alcohol-involved	50	20%
Not Alcohol-involved	205	80%
Alcohol Unknown	-	-
Total	255	100%

¹ All fatalities in alcohol-involved crashes.

Motorcyclist Helmet Usage ¹ , 2022 to Date	
Helmet Usage	Fatalities
Yes	11
No	20
Unknown	-
Total	31

¹ Excludes 4W/ATV.

Fatalities by Vehicle ¹ Occupant Seat Belt Usage, 2022 to Date				
Restraint	Yes	No	Unknown	Total
Seat Belt	58	108	1	167

¹ Total vehicle occupant fatalities. Excludes motorcyclist, 4W/ATV, semi truck, pedestrian and pedalcyclist fatalities.

Senior (65+) Fatalities 2022 to Date	
Year	Fatalities
2022	36
2021	30
2020	30

Fatalities by Residency and Location, 2022 to Date				
Location	New Mexico Resident	Non-Resident	Unknown Residency	Total
Rural	63	49	-	112
Urban	134	9	-	143
Unknown	-	-	-	-
Total	197	58	-	255

Month to Month Comparison of Fatalities by Alcohol Involvement, 2022 Year to Date												
Month	2022 Fatalities				2021 Fatalities				2020 Fatalities			
	Alcohol-involved ¹			Total	Alcohol-involved ¹			Total	Alcohol-involved ¹			Total
	Yes	No	Unk		Yes	No	Unk		Yes	No	Unk	
January	10	20	-	30	12	22	-	34	16	24	-	40
February	8	30	-	38	11	11	-	22	9	18	-	27
March	13	24	-	37	17	17	-	34	15	15	-	30
April	3	29	-	32	12	19	-	31	7	20	-	27
May	5	35	-	40	18	32	-	50	15	12	-	27
June	2	25	-	27	10	33	-	43	15	31	-	46
July	9	42	-	51	19	32	-	51	10	23	-	33
August	-	-	-	-	-	-	-	-	-	-	-	-
September	-	-	-	-	-	-	-	-	-	-	-	-
October	-	-	-	-	-	-	-	-	-	-	-	-
November	-	-	-	-	-	-	-	-	-	-	-	-
December	-	-	-	-	-	-	-	-	-	-	-	-
Total	50	205	-	255	99	166	-	265	87	143	-	230

¹ Identifies whether the fatality resulted from an alcohol-involved crash.

Month to Month Comparison of Fatalities by Seat Belt Usage, 2022 Year to Date												
Month	2022 Fatalities				2021 Fatalities				2020 Fatalities			
	Seat Belt ¹			Total ²	Seat Belt ¹			Total ²	Seat Belt ¹			Total ²
	Yes	No	Unk		Yes	No	Unk		Yes	No	Unk	
January	4	12	-	16	10	13	-	23	13	16	-	29
February	9	14	-	23	2	10	-	12	6	13	-	19
March	12	12	-	24	8	14	-	22	8	12	-	20
April	10	15	-	25	12	9	-	21	3	8	-	11
May	3	22	-	25	12	21	-	33	7	11	-	18
June	6	9	-	15	11	14	-	25	10	19	-	29
July	14	24	1	39	10	22	-	32	9	13	-	22
August	-	-	-	-	-	-	-	-	-	-	-	-
September	-	-	-	-	-	-	-	-	-	-	-	-
October	-	-	-	-	-	-	-	-	-	-	-	-
November	-	-	-	-	-	-	-	-	-	-	-	-
December	-	-	-	-	-	-	-	-	-	-	-	-
Total	58	108	1	167	65	103	-	168	56	92	-	148

¹ Identifies whether a vehicle occupant was belted (Yes), unbelted (No), or belt usage was not reported (Unk).

² Total vehicle occupant fatalities. Excludes motorcyclist, 4W/ATV, semi truck, pedestrian and pedalcyclist fatalities.

Fatalities by County and Month, 2022 to Date														
County	Jan.	Feb.	Mar.	Apr.	May	Jun.	Jul.	Aug.	Sep.	Oct.	Nov.	Dec.	2022 Total, to Date	2021 Total, to Date
Bernalillo	6	9	13	8	12	9	10	-	-	-	-	-	67	66
Catron	-	-	1	-	-	-	-	-	-	-	-	-	1	-
Chaves	1	-	-	2	1	-	-	-	-	-	-	-	4	5
Cibola	2	-	2	-	-	1	4	-	-	-	-	-	9	9
Colfax	-	-	1	-	-	1	-	-	-	-	-	-	2	3
Curry	-	-	-	2	1	-	-	-	-	-	-	-	3	6
De Baca	-	-	-	-	-	-	-	-	-	-	-	-	-	-
Doña Ana	3	1	4	3	1	2	4	-	-	-	-	-	18	8
Eddy	-	2	1	2	3	1	4	-	-	-	-	-	13	8
Grant	-	1	-	-	-	-	1	-	-	-	-	-	2	4
Guadalupe	1	4	-	-	-	-	3	-	-	-	-	-	8	2
Harding	-	-	-	-	-	-	-	-	-	-	-	-	-	-
Hidalgo	1	-	-	-	-	-	1	-	-	-	-	-	2	1
Lea	3	-	-	3	2	-	1	-	-	-	-	-	9	9
Lincoln	-	-	1	-	1	-	-	-	-	-	-	-	2	2
Los Alamos	-	-	-	-	-	-	-	-	-	-	-	-	-	1
Luna	-	-	2	-	4	1	1	-	-	-	-	-	8	10
McKinley	1	5	3	2	3	2	2	-	-	-	-	-	18	23
Mora	1	-	-	-	-	-	3	-	-	-	-	-	4	2
Otero	-	-	2	-	1	1	-	-	-	-	-	-	4	7
Quay	-	2	-	-	2	-	-	-	-	-	-	-	4	2
Rio Arriba	3	-	-	-	-	1	5	-	-	-	-	-	9	5
Roosevelt	2	1	-	-	1	-	2	-	-	-	-	-	6	2
San Juan	1	2	2	1	1	2	1	-	-	-	-	-	10	23
San Miguel	-	-	1	-	-	1	-	-	-	-	-	-	2	1
Sandoval	1	3	1	1	2	-	1	-	-	-	-	-	9	15
Santa Fe	2	1	2	4	-	3	3	-	-	-	-	-	15	13
Sierra	-	-	-	-	2	-	-	-	-	-	-	-	2	7
Socorro	-	4	-	2	-	-	4	-	-	-	-	-	10	10
Taos	-	-	-	1	-	2	-	-	-	-	-	-	3	7
Torrance	-	-	-	-	2	-	-	-	-	-	-	-	2	5
Union	-	-	1	-	-	-	-	-	-	-	-	-	1	2
Valencia	2	3	-	1	1	-	1	-	-	-	-	-	8	7
Total	30	38	37	32	40	27	51	-	-	-	-	-	255	265

Fatalities by County Relating to Alcohol, Belt Use, and Under 21 BAC, 2022 to Date							
County	Alcohol-involved Fatalities ¹		Unbelted Fatalities		Under 21 (15-20) with a BAC ²		Total Fatalities
	Count	Percent ³	Count	Percent ³	Count	Percent ³	
Bernalillo	13	19.4%	31	46.3%	-	0.0%	67
Catron	1	100.0%	-	0.0%	-	0.0%	1
Chaves	1	25.0%	2	50.0%	-	0.0%	4
Cibola	2	22.2%	2	22.2%	-	0.0%	9
Colfax	-	0.0%	-	0.0%	-	0.0%	2
Curry	-	0.0%	-	0.0%	-	0.0%	3
De Baca	-	-	-	-	-	-	-
Doña Ana	3	16.7%	3	16.7%	-	0.0%	18
Eddy	-	0.0%	8	61.5%	-	0.0%	13
Grant	-	0.0%	1	50.0%	-	0.0%	2
Guadalupe	-	0.0%	1	12.5%	-	0.0%	8
Harding	-	-	-	-	-	-	-
Hidalgo	1	50.0%	1	50.0%	-	0.0%	2
Lea	-	0.0%	5	55.6%	-	0.0%	9
Lincoln	-	0.0%	-	0.0%	-	0.0%	2
Los Alamos	-	-	-	-	-	-	-
Luna	2	25.0%	6	75.0%	-	0.0%	8
McKinley	5	27.8%	8	44.4%	-	0.0%	18
Mora	3	75.0%	1	25.0%	-	0.0%	4
Otero	1	25.0%	2	50.0%	-	0.0%	4
Quay	-	0.0%	-	0.0%	-	0.0%	4
Rio Arriba	3	33.3%	6	66.7%	-	0.0%	9
Roosevelt	-	0.0%	4	66.7%	-	0.0%	6
San Juan	3	30.0%	1	10.0%	-	0.0%	10
San Miguel	-	0.0%	-	0.0%	-	0.0%	2
Sandoval	2	22.2%	7	77.8%	-	0.0%	9
Santa Fe	5	33.3%	3	20.0%	-	0.0%	15
Sierra	1	50.0%	1	50.0%	-	0.0%	2
Socorro	1	10.0%	6	60.0%	-	0.0%	10
Taos	1	33.3%	2	66.7%	-	0.0%	3
Torrance	-	0.0%	2	100.0%	-	0.0%	2
Union	-	0.0%	-	0.0%	-	0.0%	1
Valencia	2	25.0%	4	50.0%	-	0.0%	8
Total	50	19.6%	107	42.0%	-	0.0%	255

¹ All fatalities in alcohol-involved crashes.

² Fatalities under 21 with a reported BAC (Blood Alcohol Content) above zero.

³ Percentage based on total fatalities in the county.

Fatalities by Maintenance District and Month, 2022 to Date													
District	Jan.	Feb.	Mar.	Apr.	May	Jun.	Jul.	Aug.	Sep.	Oct.	Nov.	Dec.	Total
District 1	4	6	6	5	7	3	11	-	-	-	-	-	42
District 2	6	3	4	9	10	2	7	-	-	-	-	-	41
District 3	9	15	14	9	15	9	12	-	-	-	-	-	83
District 4	2	6	3	-	2	2	6	-	-	-	-	-	21
District 5	6	3	4	6	3	8	9	-	-	-	-	-	39
District 6	3	5	6	3	3	3	6	-	-	-	-	-	29
Total	30	38	37	32	40	27	51	-	-	-	-	-	255

Fatalities by Maintenance District Relating to Alcohol, Belt Use, and Under 21 BAC, 2022 to Date							
District	Alcohol-involved Fatalities ¹		Unbelted Fatalities		Under 21 (15-20) Fatalities with a BAC ²		Total Fatalities
	Count	Percent ³	Count	Percent ³	Count	Percent ³	
District 1	8	19.0%	18	42.9%	-	0.0%	42
District 2	2	4.9%	22	53.7%	-	0.0%	41
District 3	17	20.5%	41	49.4%	-	0.0%	83
District 4	3	14.3%	2	9.5%	-	0.0%	21
District 5	12	30.8%	14	35.9%	-	0.0%	39
District 6	8	27.6%	11	37.9%	-	0.0%	29
Total	50	19.6%	108	42.4%	-	0.0%	255

¹ All fatalities in alcohol-involved crashes.

² Fatalities under 21 with a reported BAC (Blood Alcohol Content) above zero.

³ Percentage based on total fatalities in the district

Motorcycle Fatalities by County and Month, 2022 to Date ¹														
County	Jan.	Feb.	Mar.	Apr.	May	Jun.	Jul.	Aug.	Sep.	Oct.	Nov.	Dec.	2022 Total, to Date	2021 Total, to Date
Bernalillo	-	1	2	2	3	2	1	-	-	-	-	-	11	16
Catron	-	-	1	-	-	-	-	-	-	-	-	-	1	-
Chaves	-	-	-	-	-	-	-	-	-	-	-	-	-	-
Cibola	-	-	-	-	-	-	-	-	-	-	-	-	-	-
Colfax	-	-	-	-	-	-	-	-	-	-	-	-	-	-
Curry	-	-	-	-	1	-	-	-	-	-	-	-	1	-
De Baca	-	-	-	-	-	-	-	-	-	-	-	-	-	-
Doña Ana	-	1	2	-	1	-	-	-	-	-	-	-	4	-
Eddy	-	-	-	-	1	-	-	-	-	-	-	-	1	-
Grant	-	-	-	-	-	-	-	-	-	-	-	-	-	-
Guadalupe	-	-	-	-	-	-	-	-	-	-	-	-	-	-
Harding	-	-	-	-	-	-	-	-	-	-	-	-	-	-
Hidalgo	-	-	-	-	-	-	-	-	-	-	-	-	-	-
Lea	-	-	-	-	-	-	1	-	-	-	-	-	1	-
Lincoln	-	-	1	-	-	-	-	-	-	-	-	-	1	-
Los Alamos	-	-	-	-	-	-	-	-	-	-	-	-	-	-
Luna	-	-	-	-	1	-	-	-	-	-	-	-	1	-
McKinley	-	-	-	-	1	-	-	-	-	-	-	-	1	1
Mora	-	-	-	-	-	-	-	-	-	-	-	-	-	-
Otero	-	-	-	-	-	-	-	-	-	-	-	-	-	2
Quay	-	-	-	-	-	-	-	-	-	-	-	-	-	1
Rio Arriba	1	-	-	-	-	-	-	-	-	-	-	-	1	1
Roosevelt	-	-	-	-	-	-	-	-	-	-	-	-	-	-
San Juan	-	-	-	-	-	1	1	-	-	-	-	-	2	2
San Miguel	-	-	-	-	-	-	-	-	-	-	-	-	-	-
Sandoval	1	-	-	-	1	-	-	-	-	-	-	-	2	1
Santa Fe	-	-	-	1	-	-	1	-	-	-	-	-	2	1
Sierra	-	-	-	-	1	-	-	-	-	-	-	-	1	1
Socorro	-	-	-	-	-	-	-	-	-	-	-	-	-	1
Taos	-	-	-	-	-	-	-	-	-	-	-	-	-	-
Torrance	-	-	-	-	-	-	-	-	-	-	-	-	-	-
Union	-	-	-	-	-	-	-	-	-	-	-	-	-	-
Valencia	-	-	-	-	-	-	1	-	-	-	-	-	1	2
Total	2	2	6	3	10	3	5	-	-	-	-	-	31	29

¹ The term motorcycle includes motorized scooters and mopeds, but excludes 4W/ATVs.

Motorcycle ¹ Fatalities by County Relating to Alcohol, Helmet Use, and Age, 2022 to Date							
County	Alcohol-involved Fatalities ²		Unhelmeted Fatalities		Fatalities Under Age 30 (Ages 15-29)		Total Fatalities
	Count	Percent ³	Count	Percent ³	Count	Percent ³	
Bernalillo	1	9.1%	7	63.6%	1	9.1%	11
Catron	1	100.0%	1	100.0%	-	0.0%	1
Chaves	-	-	-	-	-	-	-
Cibola	-	-	-	-	-	-	-
Colfax	-	-	-	-	-	-	-
Curry	-	0.0%	-	0.0%	-	0.0%	1
De Baca	-	-	-	-	-	-	-
Doña Ana	-	0.0%	3	75.0%	-	0.0%	4
Eddy	-	0.0%	-	0.0%	-	0.0%	1
Grant	-	-	-	-	-	-	-
Guadalupe	-	-	-	-	-	-	-
Harding	-	-	-	-	-	-	-
Hidalgo	-	-	-	-	-	-	-
Lea	-	0.0%	1	100.0%	-	0.0%	1
Lincoln	-	0.0%	1	100.0%	-	0.0%	1
Los Alamos	-	-	-	-	-	-	-
Luna	-	0.0%	-	0.0%	-	0.0%	1
McKinley	1	100.0%	1	100.0%	1	100.0%	1
Mora	-	-	-	-	-	-	-
Otero	-	-	-	-	-	-	-
Quay	-	-	-	-	-	-	-
Rio Arriba	-	0.0%	1	100.0%	-	0.0%	1
Roosevelt	-	-	-	-	-	-	-
San Juan	-	0.0%	1	50.0%	-	0.0%	2
San Miguel	-	-	-	-	-	-	-
Sandoval	-	0.0%	2	100.0%	-	0.0%	2
Santa Fe	-	0.0%	1	50.0%	-	0.0%	2
Sierra	-	0.0%	-	0.0%	-	0.0%	1
Socorro	-	-	-	-	-	-	-
Taos	-	-	-	-	-	-	-
Torrance	-	-	-	-	-	-	-
Union	-	-	-	-	-	-	-
Valencia	1	100.0%	1	100.0%	1	100.0%	1
Total	4	12.9%	20	64.5%	3	9.7%	31

¹ The term motorcycle includes motorized scooters and mopeds, but excludes 4W/ATVs.

² All motorcycle fatalities in alcohol-involved crashes.

³ Percentage based on total motorcycle fatalities in the county.