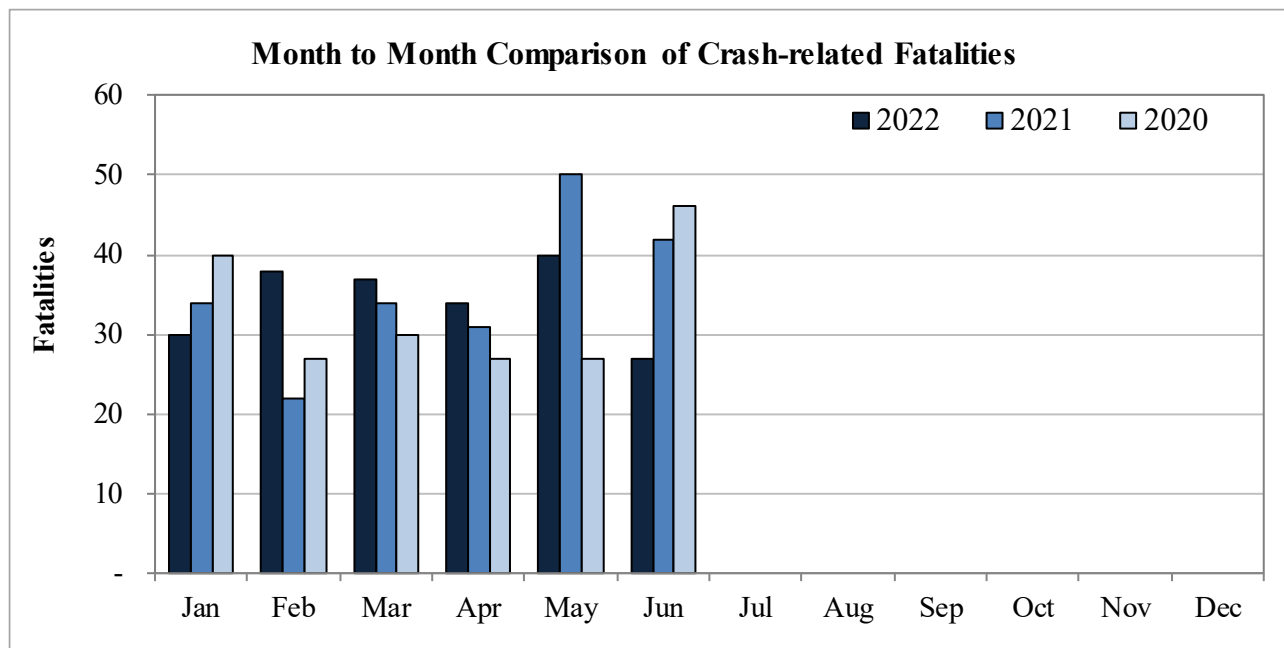


New Mexico Monthly Traffic Fatality Report, 2022

Produced for the New Mexico Department of Transportation, Traffic Safety Division, Traffic Records Bureau,
Under Contract No. 6093 by UNM Geospatial and Population Studies, Traffic Research Unit (TRU)

Fatalities by Month 2022, 2021, 2020 Year to Date			
Month	2022	2021	2020
January	30	34	40
February	38	22	27
March	37	34	30
April	34	31	27
May	40	50	27
June	27	42	46
July	-	-	-
August	-	-	-
September	-	-	-
October	-	-	-
November	-	-	-
December	-	-	-
Total	206	213	197



Fatalities by Vehicle Type, 2022 to Date										
Month in 2021	Cars	Pickup Trucks	Semi Trucks, Buses	Vans, SUVs, Utility Vehicles	ATV (4W)	Motorcyclists	Pedestrians	Pedalcyclists	Vehicle Type Unknown or Other	Total Fatalities
January	7	3	-	6	-	2	11	1	-	30
February	9	7	3	7	1	2	9	-	-	38
March	14	7	-	3	-	6	7	-	-	37
April	10	10	1	7	-	3	3	-	-	34
May	12	5	2	5	1	9	2	-	4	40
June	6	3	1	6	-	3	8	-	-	27
July	-	-	-	-	-	-	-	-	-	-
August	-	-	-	-	-	-	-	-	-	-
September	-	-	-	-	-	-	-	-	-	-
October	-	-	-	-	-	-	-	-	-	-
November	-	-	-	-	-	-	-	-	-	-
December	-	-	-	-	-	-	-	-	-	-
Total	58	35	7	34	2	25	40	1	4	206

Fatalities by Alcohol Involvement ¹ , 2022 to Date				
Month in 2022	Alcohol-involved ¹	Not Alcohol-involved	Alcohol Unknown	Total Fatalities
January	10	20	-	30
February	8	30	-	38
March	13	24	-	37
April	4	30	-	34
May	5	35	-	40
June	2	25	-	27
July	-	-	-	-
August	-	-	-	-
September	-	-	-	-
October	-	-	-	-
November	-	-	-	-
December	-	-	-	-
Total	42	164	-	206

Alcohol-involved Fatalities ¹ , 2022 to Date			
Month	2022	2021	2020
January	10	12	16
February	8	11	9
March	13	17	15
April	4	11	7
May	5	17	15
June	2	10	15
July	-	-	-
August	-	-	-
September	-	-	-
October	-	-	-
November	-	-	-
December	-	-	-
Total	42	78	77

¹ All fatalities in alcohol-involved crashes.

¹ All fatalities in alcohol-involved crashes.

Fatalities Under 21, 2022 to Date	
Age	Fatalities
1	1
2	-
3	-
4	-
5	-
6	1
7	-
8	-
9	-
10	1
11	-
12	-
13	-
14	-
15	-
16	-
17	3
18	7
19	6
20	5
Total	24

Month in 2022	Total Fatalities, to Date	Alcohol-involved Fatalities ¹ , 2022 to Date			
		Motorcyclist Fatalities	Percent Motorcyclist Fatalities	Pedestrian Fatalities	Percent Pedestrian Fatalities
January	30	-	0.0%	5	16.7%
February	38	1	0.0%	2	0.0%
March	37	1	0.0%	3	0.0%
April	34	-	0.0%	1	0.0%
May	40	-	0.0%	-	0.0%
June	27	-	0.0%	-	0.0%
July	-	-	0.0%	-	0.0%
August	-	-	0.0%	-	0.0%
September	-	-	0.0%	-	0.0%
October	-	-	0.0%	-	0.0%
November	-	-	0.0%	-	0.0%
December	-	-	0.0%	-	0.0%
Total	206	2	1.0%	11	5.3%

¹ All fatalities in alcohol-involved crashes.

Alcohol-involved Fatalities ¹ , 2022 to Date		
Alcohol-involved	42	20%
Not Alcohol-involved	164	80%
Alcohol Unknown	-	-
Total	206	100%

¹ All fatalities in alcohol-involved crashes.

Motorcyclist Helmet Usage ¹ , 2022 to Date	
Helmet Usage	Fatalities
Yes	8
No	17
Unknown	-
Total	25

¹ Excludes 4W/ATV.

Fatalities by Vehicle ¹ Occupant Seat Belt Usage, 2022 to Date				
Restraint	Yes	No	Unknown	Total
Seat Belt	42	85	-	127

¹ Total vehicle occupant fatalities. Excludes motorcyclist, 4W/ATV, semi truck, pedestrian and pedalcyclist fatalities.

Senior (65+) Fatalities 2022 to Date	
Year	Fatalities
2022	23
2021	24
2020	26

Fatalities by Residency and Location, 2022 to Date				
Location	New Mexico Resident	Non-Resident	Unknown Residency	Total
Rural	53	38	-	91
Urban	108	7	-	115
Unknown	-	-	-	-
Total	161	45	-	206

Month to Month Comparison of Fatalities by Alcohol Involvement, 2022 Year to Date												
Month	2022 Fatalities				2021 Fatalities				2020 Fatalities			
	Alcohol-involved ¹			Total	Alcohol-involved ¹			Total	Alcohol-involved ¹			Total
	Yes	No	Unk		Yes	No	Unk		Yes	No	Unk	
January	10	20	-	30	12	22	-	34	16	24	-	40
February	8	30	-	38	11	11	-	22	9	18	-	27
March	13	24	-	37	17	17	-	34	15	15	-	30
April	4	30	-	34	11	20	-	31	7	20	-	27
May	5	35	-	40	17	33	-	50	15	12	-	27
June	2	25	-	27	10	32	-	42	15	31	-	46
July	-	-	-	-	-	-	-	-	-	-	-	-
August	-	-	-	-	-	-	-	-	-	-	-	-
September	-	-	-	-	-	-	-	-	-	-	-	-
October	-	-	-	-	-	-	-	-	-	-	-	-
November	-	-	-	-	-	-	-	-	-	-	-	-
December	-	-	-	-	-	-	-	-	-	-	-	-
Total	42	164	-	206	78	135	-	213	77	120	-	197

¹ Identifies whether the fatality resulted from an alcohol-involved crash.

Month to Month Comparison of Fatalities by Seat Belt Usage, 2022 Year to Date												
Month	2022 Fatalities				2021 Fatalities				2020 Fatalities			
	Seat Belt ¹			Total ²	Seat Belt ¹			Total ²	Seat Belt ¹			Total ²
	Yes	No	Unk		Yes	No	Unk		Yes	No	Unk	
January	4	12	-	16	10	13	-	23	13	16	-	29
February	9	14	-	23	2	10	-	12	6	13	-	19
March	12	12	-	24	8	14	-	22	8	12	-	20
April	8	19	-	27	12	9	-	21	3	8	-	11
May	3	19	-	22	12	21	-	33	7	11	-	18
June	6	9	-	15	11	13	-	24	10	19	-	29
July	-	-	-	-	-	-	-	-	-	-	-	-
August	-	-	-	-	-	-	-	-	-	-	-	-
September	-	-	-	-	-	-	-	-	-	-	-	-
October	-	-	-	-	-	-	-	-	-	-	-	-
November	-	-	-	-	-	-	-	-	-	-	-	-
December	-	-	-	-	-	-	-	-	-	-	-	-
Total	42	85	-	127	55	80	-	135	47	79	-	126

¹ Identifies whether a vehicle occupant was belted (Yes), unbelted (No), or belt usage was not reported (Unk).

² Total vehicle occupant fatalities. Excludes motorcyclist, 4W/ATV, semi truck, pedestrian and pedalcyclist fatalities.

Fatalities by County and Month, 2022 to Date														
County	Jan.	Feb.	Mar.	Apr.	May	Jun.	Jul.	Aug.	Sep.	Oct.	Nov.	Dec.	2022 Total, to Date	2021 Total, to Date
Bernalillo	6	9	13	8	12	9	-	-	-	-	-	-	57	57
Catron	-	-	1	-	1	-	-	-	-	-	-	-	2	-
Chaves	1	-	-	2	1	-	-	-	-	-	-	-	4	5
Cibola	2	-	2	-	-	1	-	-	-	-	-	-	5	3
Colfax	-	-	1	-	-	1	-	-	-	-	-	-	2	3
Curry	-	-	-	2	-	-	-	-	-	-	-	-	2	6
De Baca	-	-	-	-	-	-	-	-	-	-	-	-	-	-
Doña Ana	3	1	4	3	1	2	-	-	-	-	-	-	14	8
Eddy	-	2	1	2	3	1	-	-	-	-	-	-	9	7
Grant	-	1	-	-	-	-	-	-	-	-	-	-	1	4
Guadalupe	1	4	-	-	-	-	-	-	-	-	-	-	5	2
Harding	-	-	-	-	-	-	-	-	-	-	-	-	-	-
Hidalgo	1	-	-	-	-	-	-	-	-	-	-	-	1	1
Lea	3	-	-	4	2	-	-	-	-	-	-	-	9	7
Lincoln	-	-	1	-	1	-	-	-	-	-	-	-	2	2
Los Alamos	-	-	-	-	-	-	-	-	-	-	-	-	-	1
Luna	-	-	2	-	4	1	-	-	-	-	-	-	7	7
McKinley	1	5	3	3	3	2	-	-	-	-	-	-	17	16
Mora	1	-	-	-	-	-	-	-	-	-	-	-	1	1
Otero	-	-	2	-	1	1	-	-	-	-	-	-	4	7
Quay	-	2	-	-	2	-	-	-	-	-	-	-	4	2
Rio Arriba	3	-	-	1	-	1	-	-	-	-	-	-	5	5
Roosevelt	2	1	-	-	1	-	-	-	-	-	-	-	4	2
San Juan	1	2	2	1	1	2	-	-	-	-	-	-	9	16
San Miguel	-	-	1	-	-	1	-	-	-	-	-	-	2	1
Sandoval	1	3	1	1	2	-	-	-	-	-	-	-	8	13
Santa Fe	2	1	2	3	-	3	-	-	-	-	-	-	11	8
Sierra	-	-	-	-	2	-	-	-	-	-	-	-	2	6
Socorro	-	4	-	2	-	-	-	-	-	-	-	-	6	9
Taos	-	-	-	1	-	2	-	-	-	-	-	-	3	7
Torrance	-	-	-	-	2	-	-	-	-	-	-	-	2	3
Union	-	-	1	-	-	-	-	-	-	-	-	-	1	-
Valencia	2	3	-	1	1	-	-	-	-	-	-	-	7	4
Total	30	38	37	34	40	27	-	-	-	-	-	-	206	213

Fatalities by County Relating to Alcohol, Belt Use, and Under 21 BAC, 2022 to Date							
County	Alcohol-involved Fatalities ¹		Unbelted Fatalities		Under 21 (15-20) with a BAC ²		Total Fatalities
	Count	Percent ³	Count	Percent ³	Count	Percent ³	
Bernalillo	12	21.1%	27	47.4%	-	0.0%	57
Catron	1	50.0%	-	0.0%	-	0.0%	2
Chaves	1	25.0%	2	50.0%	-	0.0%	4
Cibola	1	20.0%	1	20.0%	-	0.0%	5
Colfax	-	0.0%	-	0.0%	-	0.0%	2
Curry	-	0.0%	-	0.0%	-	0.0%	2
De Baca	-	-	-	-	-	-	-
Doña Ana	3	21.4%	2	14.3%	-	0.0%	14
Eddy	-	0.0%	6	66.7%	-	0.0%	9
Grant	-	0.0%	-	0.0%	-	0.0%	1
Guadalupe	-	0.0%	-	0.0%	-	0.0%	5
Harding	-	-	-	-	-	-	-
Hidalgo	1	100.0%	-	0.0%	-	0.0%	1
Lea	1	11.1%	6	66.7%	-	0.0%	9
Lincoln	-	0.0%	-	0.0%	-	0.0%	2
Los Alamos	-	-	-	-	-	-	-
Luna	2	28.6%	2	28.6%	-	0.0%	7
McKinley	4	23.5%	8	47.1%	-	0.0%	17
Mora	-	0.0%	1	100.0%	-	0.0%	1
Otero	1	25.0%	2	50.0%	-	0.0%	4
Quay	-	0.0%	-	0.0%	-	0.0%	4
Rio Arriba	2	40.0%	4	80.0%	-	0.0%	5
Roosevelt	-	0.0%	2	50.0%	-	0.0%	4
San Juan	3	33.3%	1	11.1%	-	0.0%	9
San Miguel	-	0.0%	-	0.0%	-	0.0%	2
Sandoval	2	25.0%	6	75.0%	-	0.0%	8
Santa Fe	4	36.4%	3	27.3%	-	0.0%	11
Sierra	1	50.0%	1	50.0%	-	0.0%	2
Socorro	1	16.7%	2	33.3%	-	0.0%	6
Taos	1	33.3%	2	66.7%	-	0.0%	3
Torrance	-	0.0%	2	100.0%	-	0.0%	2
Union	-	0.0%	-	0.0%	-	0.0%	1
Valencia	1	14.3%	4	57.1%	-	0.0%	7
Total	42	20.4%	84	40.8%	-	0.0%	206

¹ All fatalities in alcohol-involved crashes.

² Fatalities under 21 with a reported BAC (Blood Alcohol Content) above zero.

³ Percentage based on total fatalities in the county.

Fatalities by Maintenance District and Month, 2022 to Date													
District	Jan.	Feb.	Mar.	Apr.	May	Jun.	Jul.	Aug.	Sep.	Oct.	Nov.	Dec.	Total
District 1	4	6	6	5	7	3	-	-	-	-	-	-	31
District 2	6	3	4	10	10	2	-	-	-	-	-	-	35
District 3	9	15	14	9	15	9	-	-	-	-	-	-	71
District 4	2	6	3	-	2	2	-	-	-	-	-	-	15
District 5	6	3	4	6	3	8	-	-	-	-	-	-	30
District 6	3	5	6	4	3	3	-	-	-	-	-	-	24
Total	30	38	37	34	40	27	-	-	-	-	-	-	206

Fatalities by Maintenance District Relating to Alcohol, Belt Use, and Under 21 BAC, 2022 to Date							
District	Alcohol-involved Fatalities ¹		Unbelted Fatalities		Under 21 (15-20) Fatalities with a BAC ²		Total Fatalities
	Count	Percent ³	Count	Percent ³	Count	Percent ³	
District 1	8	25.8%	7	22.6%	-	0.0%	31
District 2	3	8.6%	19	54.3%	-	0.0%	35
District 3	15	21.1%	36	50.7%	-	0.0%	71
District 4	-	0.0%	1	6.7%	-	0.0%	15
District 5	10	33.3%	12	40.0%	-	0.0%	30
District 6	6	25.0%	10	41.7%	-	0.0%	24
Total	42	20.4%	85	41.3%	-	0.0%	206

¹ All fatalities in alcohol-involved crashes.

² Fatalities under 21 with a reported BAC (Blood Alcohol Content) above zero.

³ Percentage based on total fatalities in the district

Motorcycle Fatalities by County and Month, 2022 to Date ¹														
County	Jan.	Feb.	Mar.	Apr.	May	Jun.	Jul.	Aug.	Sep.	Oct.	Nov.	Dec.	2022 Total, to Date	2021 Total, to Date
Bernalillo	-	1	2	2	3	2	-	-	-	-	-	-	10	12
Catron	-	-	1	-	1	-	-	-	-	-	-	-	2	-
Chaves	-	-	-	-	-	-	-	-	-	-	-	-	-	-
Cibola	-	-	-	-	-	-	-	-	-	-	-	-	-	-
Colfax	-	-	-	-	-	-	-	-	-	-	-	-	-	-
Curry	-	-	-	-	-	-	-	-	-	-	-	-	-	-
De Baca	-	-	-	-	-	-	-	-	-	-	-	-	-	-
Doña Ana	-	1	2	-	1	-	-	-	-	-	-	-	4	-
Eddy	-	-	-	-	1	-	-	-	-	-	-	-	1	-
Grant	-	-	-	-	-	-	-	-	-	-	-	-	-	-
Guadalupe	-	-	-	-	-	-	-	-	-	-	-	-	-	-
Harding	-	-	-	-	-	-	-	-	-	-	-	-	-	-
Hidalgo	-	-	-	-	-	-	-	-	-	-	-	-	-	-
Lea	-	-	-	-	-	-	-	-	-	-	-	-	-	-
Lincoln	-	-	1	-	-	-	-	-	-	-	-	-	1	-
Los Alamos	-	-	-	-	-	-	-	-	-	-	-	-	-	-
Luna	-	-	-	-	1	-	-	-	-	-	-	-	1	-
McKinley	-	-	-	-	-	-	-	-	-	-	-	-	-	-
Mora	-	-	-	-	-	-	-	-	-	-	-	-	-	-
Otero	-	-	-	-	-	-	-	-	-	-	-	-	-	2
Quay	-	-	-	-	-	-	-	-	-	-	-	-	-	1
Rio Arriba	1	-	-	-	-	-	-	-	-	-	-	-	1	1
Roosevelt	-	-	-	-	-	-	-	-	-	-	-	-	-	-
San Juan	-	-	-	-	-	1	-	-	-	-	-	-	1	2
San Miguel	-	-	-	-	-	-	-	-	-	-	-	-	-	-
Sandoval	1	-	-	-	1	-	-	-	-	-	-	-	2	1
Santa Fe	-	-	-	1	-	-	-	-	-	-	-	-	1	1
Sierra	-	-	-	-	1	-	-	-	-	-	-	-	1	1
Socorro	-	-	-	-	-	-	-	-	-	-	-	-	-	1
Taos	-	-	-	-	-	-	-	-	-	-	-	-	-	-
Torrance	-	-	-	-	-	-	-	-	-	-	-	-	-	-
Union	-	-	-	-	-	-	-	-	-	-	-	-	-	-
Valencia	-	-	-	-	-	-	-	-	-	-	-	-	-	2
Total	2	2	6	3	9	3	-	-	-	-	-	-	25	24

¹ The term motorcycle includes motorized scooters and mopeds, but excludes 4W/ATVs.

Motorcycle ¹ Fatalities by County Relating to Alcohol, Helmet Use, and Age, 2022 to Date							
County	Alcohol-involved Fatalities ²		Unhelmeted Fatalities		Fatalities Under Age 30 (Ages 15-29)		Total Fatalities
	Count	Percent ³	Count	Percent ³	Count	Percent ³	
Bernalillo	1	10.0%	6	60.0%	1	10.0%	10
Catron	1	50.0%	2	100.0%	-	0.0%	2
Chaves	-	-	-	-	-	-	-
Cibola	-	-	-	-	-	-	-
Colfax	-	-	-	-	-	-	-
Curry	-	#DIV/0!	-	#DIV/0!	-	#DIV/0!	-
De Baca	-	-	-	-	-	-	-
Doña Ana	-	0.0%	3	75.0%	-	0.0%	4
Eddy	-	0.0%	-	0.0%	-	0.0%	1
Grant	-	-	-	-	-	-	-
Guadalupe	-	-	-	-	-	-	-
Harding	-	-	-	-	-	-	-
Hidalgo	-	-	-	-	-	-	-
Lea	-	-	-	-	-	-	-
Lincoln	-	0.0%	1	100.0%	-	0.0%	1
Los Alamos	-	-	-	-	-	-	-
Luna	-	0.0%	-	0.0%	-	0.0%	1
McKinley	-	-	-	-	-	-	-
Mora	-	-	-	-	-	-	-
Otero	-	-	-	-	-	-	-
Quay	-	-	-	-	-	-	-
Rio Arriba	-	0.0%	1	100.0%	-	0.0%	1
Roosevelt	-	-	-	-	-	-	-
San Juan	-	-	1	-	-	-	1
San Miguel	-	-	-	-	-	-	-
Sandoval	-	0.0%	2	100.0%	-	0.0%	2
Santa Fe	-	0.0%	1	100.0%	-	0.0%	1
Sierra	-	0.0%	-	0.0%	-	0.0%	1
Socorro	-	-	-	-	-	-	-
Taos	-	-	-	-	-	-	-
Torrance	-	-	-	-	-	-	-
Union	-	-	-	-	-	-	-
Valencia	-	-	-	-	-	-	-
Total	2	8.0%	17	68.0%	1	4.0%	25

¹ The term motorcycle includes motorized scooters and mopeds, but excludes 4W/ATVs.

² All motorcycle fatalities in alcohol-involved crashes.

³ Percentage based on total motorcycle fatalities in the county.