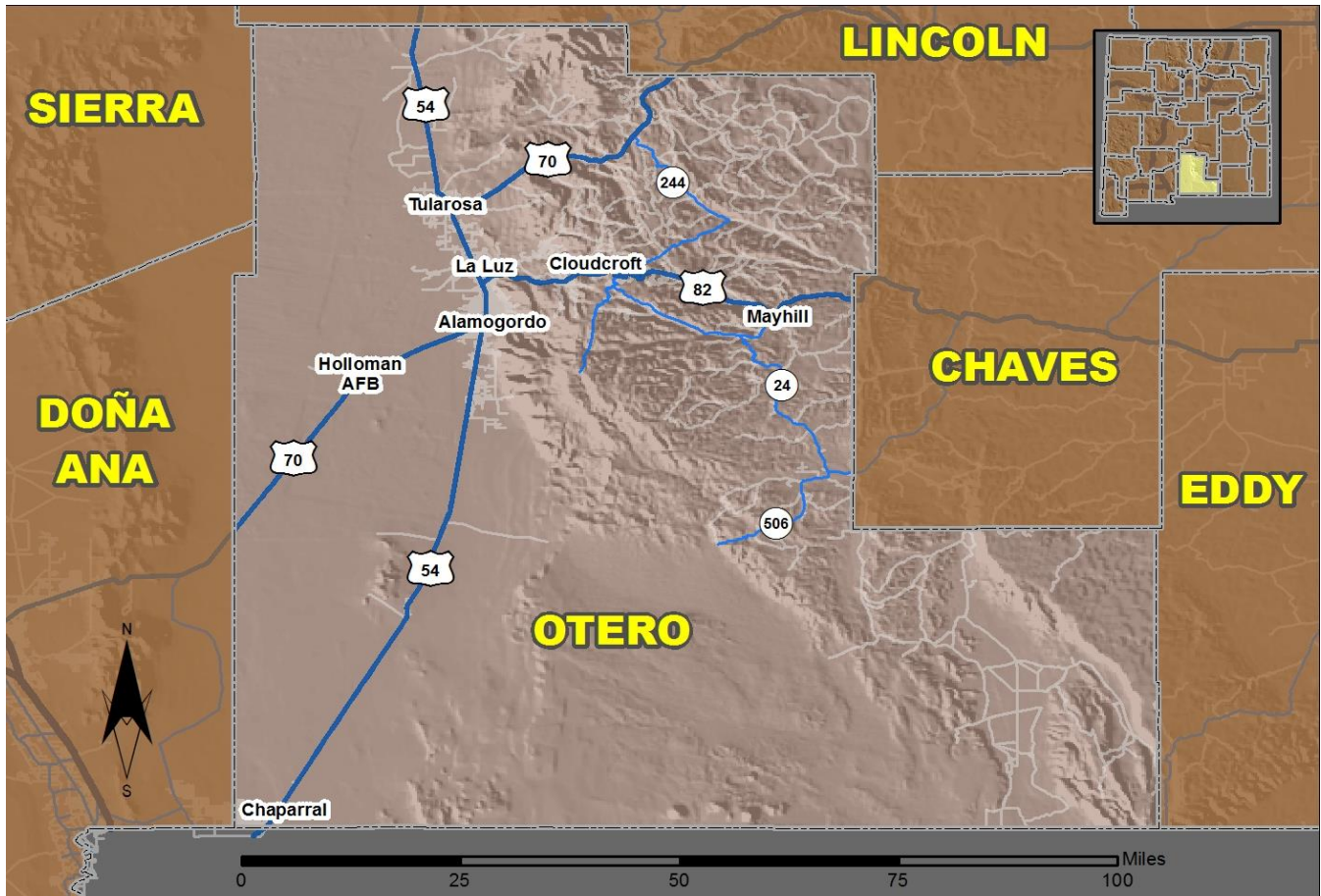


2016 Community Report

Alamogordo



Produced for the New Mexico Department of Transportation,
Traffic Safety Division, Traffic Records Bureau,
Under Contract 5801 by the University of New Mexico,
Geospatial and Population Studies, Traffic Research Unit

Distributed in compliance with New Mexico Statute 66-7-214
as a reference source regarding New Mexico traffic crashes

For the purposes of this report, data are compiled by the University of New Mexico, Geospatial and Population Studies, Traffic Research Unit (TRU), on behalf of the New Mexico Department of Transportation (NMDOT). Data in this report may differ from that in other data sources, such as the Federal Fatality Analysis Reporting System (FARS), due to the timing of publications and rules for how data are compiled and maintained in Federal vs. State databases. If you have questions regarding this report, please contact the Traffic Safety Division at 505-827-0427.

<http://tru.unm.edu/Crash-Reports/Community-Reports/>

Definitions

Aggravated DWI – A driver arrested for 1) driving with a BAC of 0.16 or higher, 2) driving under the influence of alcohol or drugs and causing bodily injury to a human being as a result, or 3) driving under the influence of alcohol or drugs and refusing to submit to a BAC test at the time of arrest for DWI.

Alcohol-involved Crash – A crash for which the Uniform Crash Report indicated that 1) a DWI citation was issued, 2) alcohol was a contributing factor, or 3) a person in control of a vehicle (including a pedestrian or pedalcyclist) was suspected of being under the influence of alcohol.

Alcohol-involved Driver – A person in control of a vehicle who was cited for DWI or indicated on the Uniform Crash Report as being either suspected or determined by testing to be under the influence of alcohol. There can be multiple alcohol-involved drivers in a single alcohol-involved crash.

Crash – A reported incident on a public roadway involving one or more motor vehicles that resulted in death, personal injury, or at least \$500 in property damage. Crashes on private property (such as a parking lot) are not included.

DWI Arrest (Citation) – In this report, a DWI arrest (a.k.a. a DWI citation) is a driver arrested for either DWI or aggravated DWI. New Mexico’s legal limit for presumption of driving while intoxicated (DWI) is 0.08 for non-commercial drivers older than 21 years of age, 0.04 for commercial vehicle drivers, and 0.02 for drivers younger than 21 years of age.

DWI Conviction – A driver convicted of driving under the intoxicating influence of alcohol, narcotics, or pathogenic drugs, including aggravated DWI.

Fatal Crash – A crash in which at least one person was killed. More than one person can be killed in a single fatal crash.

Fatalities – The number of people killed in a crash. The terms “killed” and “deaths” are synonymous with “fatalities.” A fatality is crash-related if it occurs at the time of the crash or if the person(s) involved in the crash dies within 30 days.

Injury Crash – A reported crash in which at least one person was injured. Injury crashes involve at least one suspected serious injury (Class A), suspected minor injury (Class B), or possible injury (Class C). Fatal crashes are not included.

Missing Data – An indication that the applicable field on the UCR form was left blank or contained an invalid code. Starting with crashes that occurred in 2012, improvements in the identification of missing data in the NMDOT crash database led to an increase in the reported amount of missing data.

Pedalcyclist – A person riding a mechanism of transport that is powered solely by pedals (a.k.a. bicyclist).

Pedestrian – A person on foot, walking, running, jogging, hiking, sitting or lying down who is involved in a motor vehicle traffic crash.

Sources

Crash Data – New Mexico Department of Transportation, Traffic Safety Division, Traffic Records Bureau, Traffic Crash Database, as of the report date below. Crash data are compiled using NMDOT Uniform Crash Reports (UCR), submitted by law enforcement agencies in the state, for any incident on a public roadway involving one or more motor vehicles that resulted in death, injury, or at least \$500 in property damage. These reports are processed by the NMDOT Traffic Records Bureau and analyzed by the University of New Mexico, Geospatial and Population Studies, Traffic Research Unit (TRU).

DWI Citation Tracking System (CTS) – New Mexico Taxation and Revenue Department (NM TRD), Motor Vehicle Division (MVD), DWI Citation Tracking System (CTS), as of December 2017. Repeat offenders are identified by the combination of account key, arrest date, and citation number. County data are based upon the county where the arrest took place. City data are based upon the city where the offender resides.

Urban Areas – New Mexico Department of Transportation, Asset Management and Planning, 2010 U.S. Census Urbanized Area Boundaries, NMDOT-Adjusted, and U.S. Census Urban Clusters, August 21, 2013. In crashes before 2013, “urban” was defined as a town or city with a population of at least 2,500 people.

**Table 1: Total Crashes and Alcohol-involved Crashes by
Crash Severity in Alamogordo, 2007-2016**

Year	Total Crashes				Alcohol-involved Crashes			
	Fatal	Injury	Property Damage Only	Total	Fatal	Injury	Property Damage Only	Total
2007	1	201	534	736	0	14	21	35
2008	0	197	480	677	0	7	17	24
2009	1	217	484	702	0	7	16	23
2010	1	216	465	682	1	13	14	28
2011	3	214	541	758	1	15	18	34
2012	4	185	464	653	2	11	16	29
2013	2	192	489	683	0	14	19	33
2014	4	155	420	579	2	7	15	24
2015	4	175	457	636	0	12	12	24
2016	0	201	408	609	0	10	16	26

**Figure 1: Alcohol-involved Fatal and Injury Crashes Compared with
Non-alcohol-involved Fatal and Injury Crashes in Alamogordo, 2007-2016**

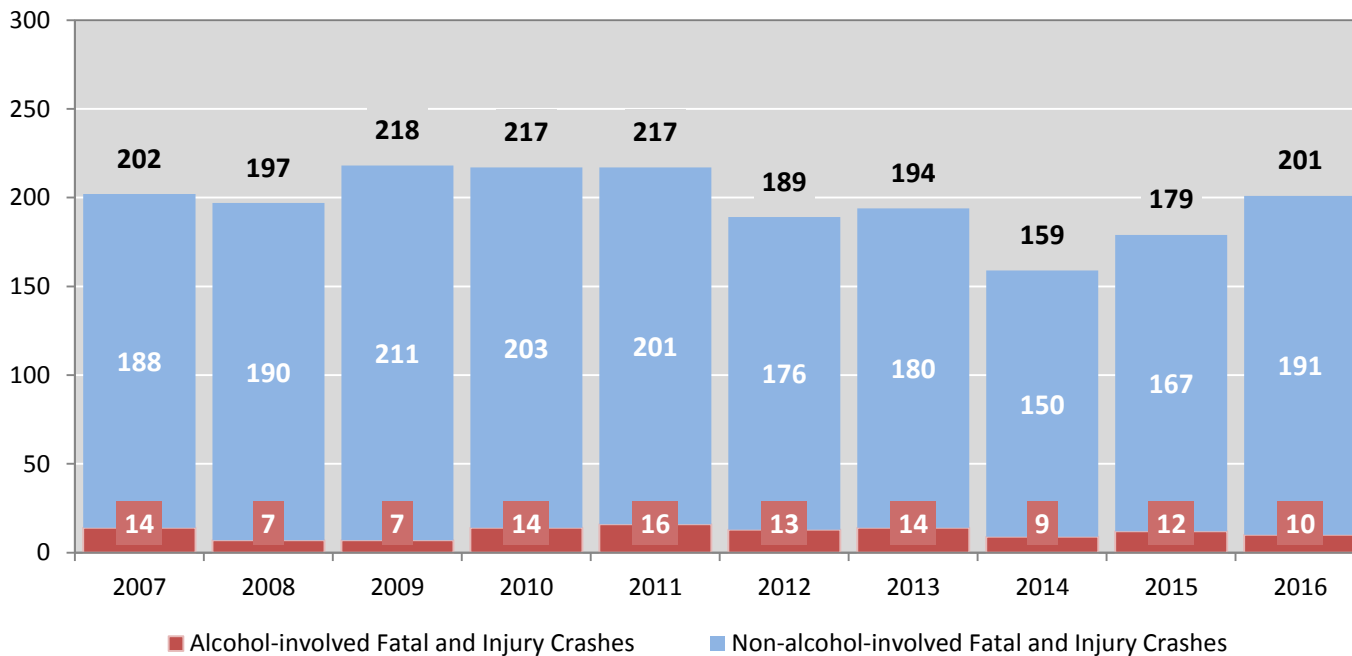


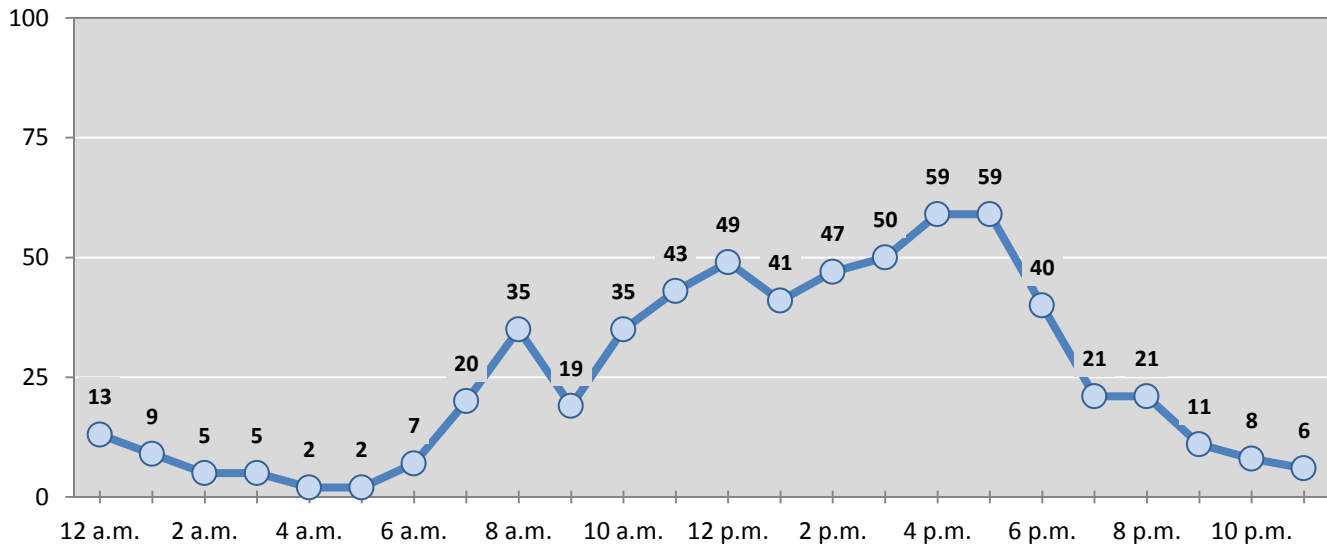
Table 2: Crashes by Month in Alamogordo, 2012-2016

Month	Crashes					5-Year Average
	2012	2013	2014	2015	2016	
January	55	52	48	54	48	51
February	53	53	45	54	56	52
March	43	63	63	51	68	58
April	70	54	68	50	55	59
May	59	69	58	59	52	59
June	51	65	47	62	52	55
July	50	49	41	58	46	49
August	72	52	47	50	34	51
September	56	45	57	63	55	55
October	47	63	33	58	41	48
November	48	57	14	38	39	39
December	49	61	58	39	63	54
Total Crashes	653	683	579	636	609	632

Table 3: Alcohol-involved Crashes by Month in Alamogordo, 2012-2016

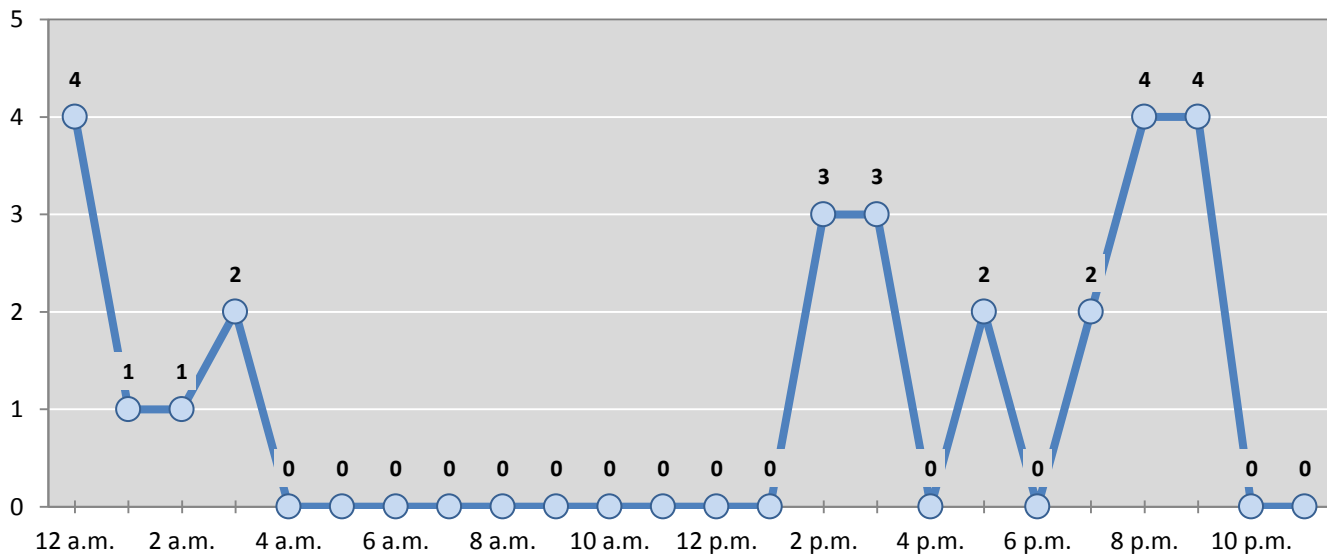
Month	Alcohol-involved Crashes					5-Year Average
	2012	2013	2014	2015	2016	
January	3	3	2	0	3	2
February	3	1	2	2	2	2
March	2	4	2	1	0	2
April	3	3	1	1	3	2
May	1	3	3	3	4	3
June	3	2	1	4	5	3
July	0	3	2	3	2	2
August	6	2	0	4	0	2
September	1	1	3	1	1	1
October	2	2	1	1	1	1
November	3	3	2	2	3	3
December	2	6	5	2	2	3
Total Crashes	29	33	24	24	26	27

Figure 2: Crashes by Hour in Alamogordo, 2016



* In 2016, Alamogordo had 2 crashes for which hour data were missing.

Figure 3: Alcohol-involved Crashes by Hour in Alamogordo, 2016



* In 2016, Alamogordo had 0 alcohol-involved crashes for which hour data were missing.

Table 4: Alcohol-involved Crashes by Day of Week in Alamogordo, 2012-2016

Day of Week	Alcohol-involved Crashes					5-Year Average
	2012	2013	2014	2015	2016	
Sunday	7	5	4	3	9	6
Monday	6	3	5	1	5	4
Tuesday	0	3	3	1	0	1
Wednesday	3	3	2	2	1	2
Thursday	3	5	1	4	5	4
Friday	2	3	5	6	2	4
Saturday	8	11	4	7	4	7
Total Crashes	29	33	24	24	26	27

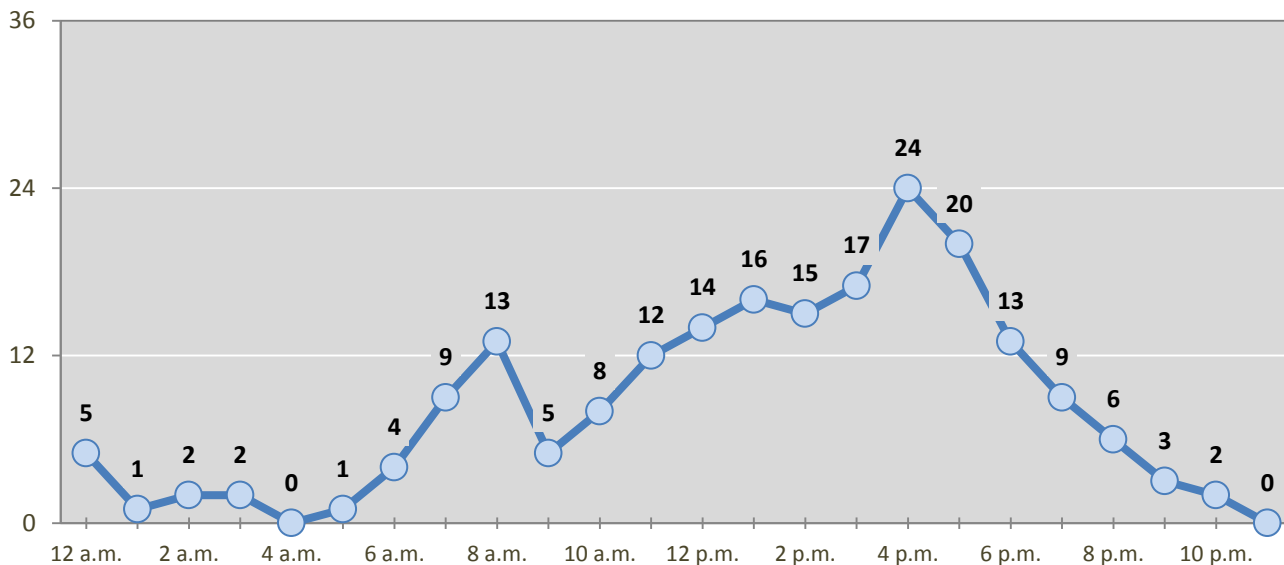
Table 5: Fatal and Injury Crashes by Day of Week in Alamogordo, 2012-2016

Day of Week	Fatal and Injury Crashes					5-Year Average
	2012	2013	2014	2015	2016	
Sunday	15	12	15	16	19	15
Monday	25	34	25	21	40	29
Tuesday	31	27	26	27	25	27
Wednesday	24	24	28	35	35	29
Thursday	32	28	18	31	28	27
Friday	41	40	26	34	30	34
Saturday	21	29	21	15	24	22
Total Crashes	189	194	159	179	201	184

Table 6: Pedestrian and Pedalcyclist Crashes by Day of Week in Alamogordo, 2012-2016

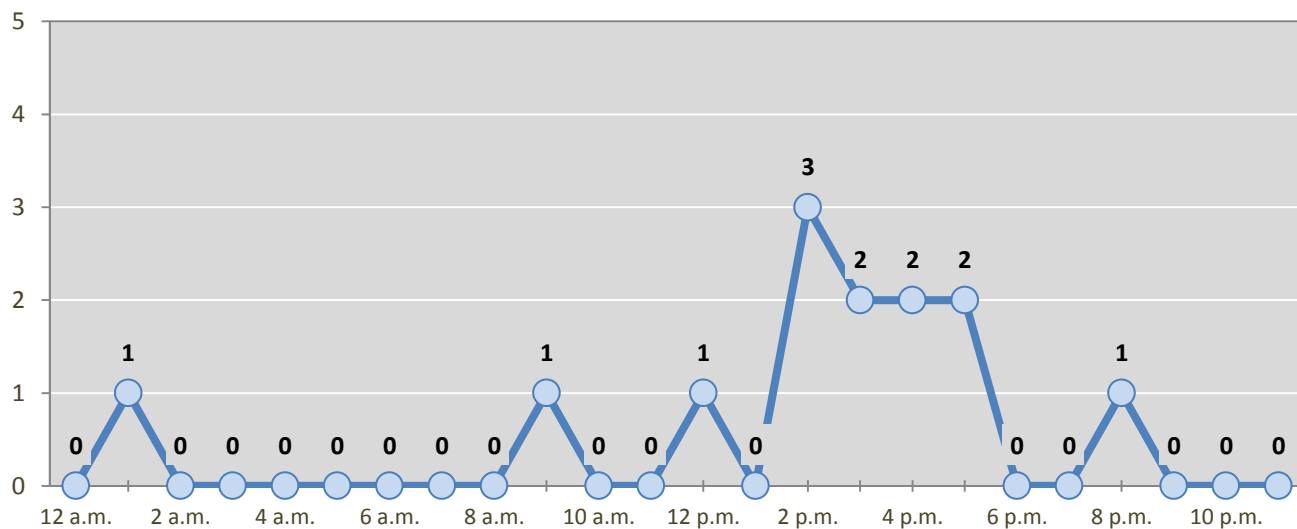
Day of Week	Pedestrian and Pedalcyclist Crashes					5-Year Average
	2012	2013	2014	2015	2016	
Sunday	1	0	2	1	0	1
Monday	3	1	3	1	4	2
Tuesday	1	2	2	6	0	2
Wednesday	2	1	4	2	1	2
Thursday	2	7	1	1	3	3
Friday	2	1	1	2	3	2
Saturday	2	2	1	1	2	2
Total Crashes	13	14	14	14	13	14

Figure 4: Fatal and Injury Crashes by Hour in Alamogordo, 2016



* In 2016, Alamogordo had 0 crashes for which hour data were missing.

Figure 5: Pedestrian and Pedalcyclist Crashes by Hour in Alamogordo, 2016



* In 2016, Alamogordo had 0 crashes for which hour data were missing.

Table 7: Severity of Injuries to People in Crashes by Rural and Urban Location in Alamogordo, 2016

Urban and Rural Locations by Alcohol-involvement	People in Crashes by Severity of Injuries					Total People
	Fatalities (Class K)	Suspected Serious Injuries (Class A)	Suspected Minor Injuries (Class B)	Possible Injuries (Class C)	No Apparent Injuries (Class O)	
People in Alcohol-involved Crashes	0	2	4	6	45	57
Urban	0	2	4	6	45	57
Rural Non-Interstate	0	0	0	0	0	0
Rural Interstate	0	0	0	0	0	0
People in Crashes	0	11	72	187	1,315	1,585
Urban	0	10	68	180	1,301	1,559
Rural Non-Interstate	0	1	4	7	14	26
Rural Interstate	0	0	0	0	0	0
Percent in Alcohol-involved Crashes	0%	18%	6%	3%	3%	4%

Table 8: Total Crashes by Roadway System and Crash Severity in Alamogordo, 2012-2016

Crash Severity by System	Crashes by Year					5-Year Average
	2012	2013	2014	2015	2016	
Total Rural Interstate	0	0	0	0	0	0
Fatal Crash	0	0	0	0	0	0
Injury Crash	0	0	0	0	0	0
Property Damage Only Crash	0	0	0	0	0	0
Total Rural Non-Interstate	3	34	23	22	15	19
Fatal Crash	2	2	2	1	0	1
Injury Crash	1	11	8	5	8	7
Property Damage Only Crash	0	21	13	16	7	11
Total Urban	650	649	556	614	594	612
Fatal Crash	2	0	2	3	0	1
Injury Crash	184	181	147	170	193	175
Property Damage Only Crash	464	468	407	441	401	436

Table 9: Total Crashes by Crash Classification in Alamogordo, 2012-2016

Crash Classification	Total Crashes by Year					5-Year Average
	2012	2013	2014	2015	2016	
Animal	5	5	6	1	4	4
Fixed Object	64	66	50	61	65	61
Other (Non-Collision)	14	6	6	10	9	9
Other (Object)	9	15	9	11	7	10
Other Vehicle	447	481	378	454	411	434
Overturn/Rollover	9	7	10	2	16	9
Parked Vehicle	72	73	92	63	77	75
Pedalcyclist	4	7	7	7	5	6
Pedestrian	11	7	7	7	9	8
Railroad Train	0	2	1	0	0	1
Rollover	0	0	0	11	1	2
Vehicle on Other Road	6	6	9	8	4	7
Missing Data	12	8	4	1	1	5
Total Crashes	653	683	579	636	609	632

Table 10: Vehicles in Crashes by Vehicle Type in Alamogordo, 2012-2016

Vehicle Type ¹	Vehicles in Crashes by Vehicle Type					5-Year Average
	2012	2013	2014	2015	2016	
Bus	2	4	1	0	5	2
Motorcycle	26	29	24	27	36	28
Passenger	627	627	556	592	584	597
Pedalcyclist	4	7	7	7	5	6
Pedestrian	9	7	7	7	8	8
Pickup	256	289	219	265	220	250
Semi	25	11	14	13	13	15
Van/SUV/4WD	228	233	229	253	228	234
Other Vehicle	11	22	9	4	5	10
Missing Data	60	70	58	48	46	56
Total Vehicles	1,248	1,299	1,124	1,216	1,150	1,207

¹ Pedestrians and pedalcyclists are counted as non-motorized vehicles, when involved in a crash with a motor vehicle. See Page 17 for data on drivers of non-motorized vehicles in crashes (i.e. pedestrians and pedalcyclists).

Table 11: Motor Vehicle Drivers in Crashes by Vehicle Type and Age Group in Alamogordo, 2016

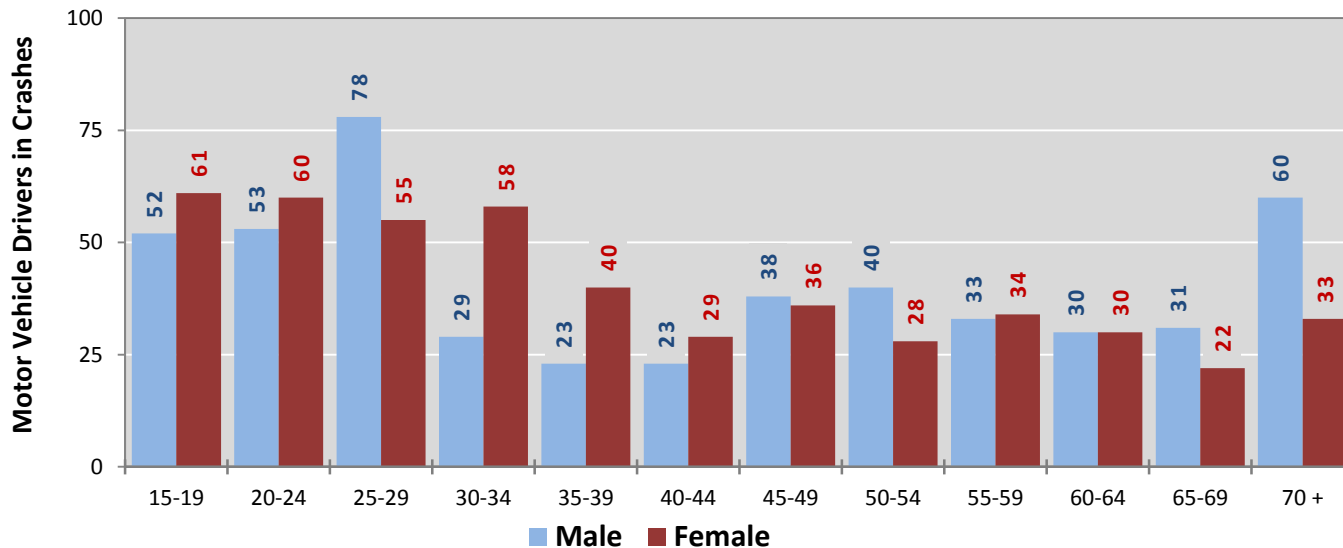
Age Groups	Motor Vehicle ¹ Drivers by Vehicle Type and Age Group								Total Drivers
	Bus	Motor-cycle	Passenger	Pickup	Semi	Van 4WD SUV	Other Vehicle	Missing Data	
15-19	0	5	66	25	0	16	1	0	113
20-24	1	1	79	15	0	17	0	0	113
25-29	0	8	78	23	1	21	1	1	133
30-34	1	4	49	14	1	18	0	0	87
35-39	1	1	30	8	2	21	0	0	63
40-44	0	3	21	11	2	14	0	1	52
45-49	0	3	32	16	3	19	1	0	74
50-54	0	2	25	18	2	19	1	1	68
55-59	1	2	34	18	1	10	1	0	67
60-64	0	4	27	10	0	19	0	0	60
65-69	0	1	26	12	0	14	0	0	53
70 +	1	2	53	19	0	18	0	0	93
Missing Data	0	0	64	31	1	22	0	43	161
Total Drivers	5	36	584	220	13	228	5	46	1,137

Table 12: Alcohol-involved Motor Vehicle Drivers in Crashes by Vehicle Type and Age Group in Alamogordo, 2016

Age Groups	Alcohol-involved Motor Vehicle ¹ Drivers by Vehicle Type and Age Group								Total Drivers
	Bus	Motor-cycle	Passenger	Pickup	Semi	Van 4WD SUV	Other Vehicle	Missing Data	
15-19	0	0	2	0	0	0	0	0	2
20-24	0	0	2	0	0	1	0	0	3
25-29	0	0	2	1	0	1	0	0	4
30-34	0	0	2	1	0	0	0	0	3
35-39	0	0	0	1	0	2	0	0	3
40-44	0	0	0	0	0	0	0	0	0
45-49	0	1	3	1	0	0	0	0	5
50-54	0	1	0	1	0	0	0	0	2
55-59	0	1	1	0	0	0	0	0	2
60-64	0	0	0	0	0	0	0	0	0
65-69	0	0	1	1	0	0	0	0	2
70 +	0	0	0	0	0	0	0	0	0
Missing Data	0	0	0	0	0	0	0	0	0
Total Drivers	0	3	13	6	0	4	0	0	26

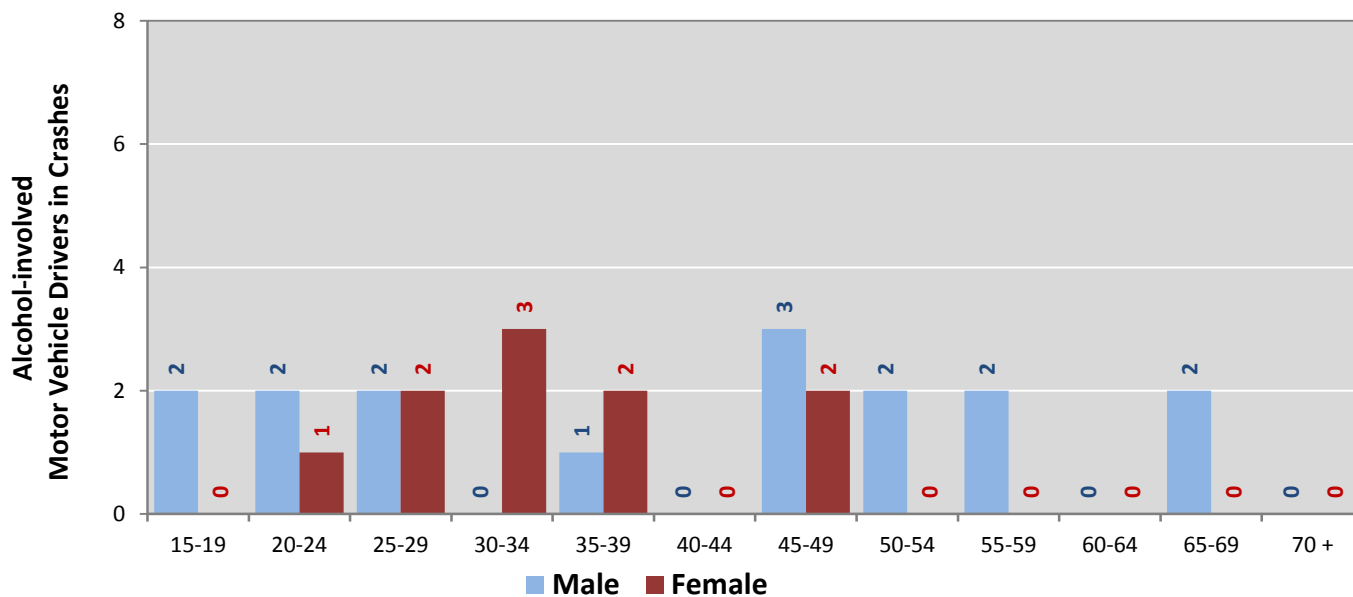
¹ See Page 17 for data on drivers of non-motorized vehicles in crashes (i.e. pedestrians and pedalcyclists).

Figure 6: Motor Vehicle Drivers in Crashes by Age Group and Sex in Alamogordo, 2016



* In 2016, Alamogordo had 161 drivers in crashes for which age or sex data were missing.

Figure 7: Alcohol-involved Motor Vehicle Drivers in Crashes by Age Group and Sex in Alamogordo, 2016



* In 2016, Alamogordo had 0 drivers in crashes for which age or sex data were missing.

**Table 13: Alcohol-involved Motor Vehicle Drivers Under 21
(Ages 15-20) in Crashes in Alamogordo, 2012-2016**

Age ¹	Year					5-Year Total
	2012	2013	2014	2015	2016	
15	0	0	0	0	0	0
16	1	0	0	0	1	2
17	0	0	1	2	1	4
18	1	1	1	0	0	3
19	0	2	0	1	0	3
20	0	1	0	0	0	1
Total Drivers	2	4	2	3	2	13

**Table 14: Motor Vehicle Drivers Under 21 (Ages 15-20) in Crashes
by Age, Sex and Alcohol-involvement in Alamogordo, 2016**

Age ¹	Total Drivers				Alcohol-involved Drivers			
	Sex		Total Drivers	Percent of Total	Sex		Total Drivers	Percent of Total
	Male	Female			Male	Female		
15	1	4	5	4%	0	0	0	0%
16	13	7	20	15%	1	0	1	50%
17	17	18	35	27%	1	0	1	50%
18	11	16	27	20%	0	0	0	0%
19	10	16	26	20%	0	0	0	0%
20	9	10	19	14%	0	0	0	0%
Total Drivers	61	71	132	100%	2	0	2	100%

¹ For analysis of drivers under age 21, when the driver age or sex are not identified on the crash report (typically hit-and-run drivers), the driver data are considered unreliable and are excluded from the analysis.

**Table 15: Frequency of Contributing Factors in Crashes
by Crash Severity in Alamogordo, 2016**

Contributing Factors	Frequency of Contributing Factor ¹ by Crash Severity			
	Frequency in Fatal Crashes	Frequency in Injury Crashes	Frequency in Property Damage Only Crashes	Frequency in All Crashes
Human	0	363	722	1,085
Driver Inattention	0	141	308	449
Failed to Yield Right of Way	0	64	82	146
Following Too Closely	0	29	50	79
Other Improper Driving	0	25	48	73
Made Improper Turn	0	19	41	60
Excessive Speed	0	18	30	48
Improper Backing	0	2	41	43
Passed Stop Sign	0	12	18	30
Alcohol Involved	0	10	16	26
Disregarded Traffic Signal	0	12	12	24
Avoid No Contact - Vehicle	0	7	16	23
Avoid No Contact - Other	0	2	14	16
Improper Overtaking	0	4	10	14
Drove Left Of Center	0	4	9	13
Improper Lane Change	0	3	8	11
Speed Too Fast for Conditions	0	4	5	9
Drug Involved	0	2	5	7
Vehicle Skidded Before Brake	0	3	2	5
Driverless Moving Vehicle	0	0	3	3
Failed to Yield to Emergency Vehicle	0	1	1	2
High Speed Pursuit	0	0	2	2
Cell Phone	0	0	1	1
Pedestrian Error	0	1	0	1
Failed to Yield to Police Vehicle	0	0	0	0
Texting	0	0	0	0
Vehicle	0	4	7	11
Inadequate Brakes	0	3	2	5
Other Mechanical Defect	0	0	4	4
Defective Steering	0	0	1	1
Defective Tires	0	1	0	1
Environment	0	1	0	1
Traffic Control Not Functioning	0	1	0	1
Low Visibility Due to Smoke	0	0	0	0
Road Defect	0	0	0	0
Other	0	181	328	509
None	0	167	311	478
Other - No Driver Error	0	14	17	31

¹ Multiple contributing factors may be reported for any vehicle in a crash.

Table 16: People in Crashes by Crash Classification and Severity of Injuries in Alamogordo, 2016

Crash Classification	People in Crashes by Severity of Injuries					Total People
	Fatalities (Class K)	Suspected Serious Injuries (Class A)	Suspected Minor Injuries (Class B)	Possible Injuries (Class C)	No Apparent Injuries (Class O)	
Animal	0	0	1	0	3	4
Fixed Object	0	0	3	10	74	87
Other (Non-Collision)	0	0	2	4	4	10
Other (Object)	0	0	0	0	16	16
Other Vehicle	0	9	40	165	1,006	1,220
Overturn/Rollover	0	0	10	4	13	27
Parked Vehicle	0	2	4	1	171	178
Pedalcyclist	0	0	5	0	6	11
Pedestrian	0	0	5	3	13	21
Railroad Train	0	0	0	0	0	0
Rollover	0	0	1	0	0	1
Vehicle on Other Road	0	0	1	0	7	8
Missing Data	0	0	0	0	2	2
Total People	0	11	72	187	1,315	1,585

**Table 17: Killed or Injured Unbelted People in Crashes
by Sex and Age Group in Alamogordo, 2016**

Age Groups	Unbelted People Killed or Injured ^{1,2}				Total People
	Male	Percent of Male	Female	Percent of Female	
0-4	0	0%	0	0%	0
5-9	1	33%	0	0%	1
10-14	0	0%	0	0%	0
15-19	0	0%	0	0%	0
20-24	0	0%	0	0%	0
25-29	1	33%	0	0%	1
30-34	0	0%	0	0%	0
35-39	0	0%	0	0%	0
40-44	0	0%	0	0%	0
45-49	0	0%	0	0%	0
50-54	0	0%	0	0%	0
55-59	1	33%	0	0%	1
60-64	0	0%	0	0%	0
65-69	0	0%	0	0%	0
70 +	0	0%	0	0%	0
Missing Data	0	0%	0	0%	0
Total People	3	100%	0	0%	3

¹ People injured are in one of three categories: suspected serious injury, suspected minor injury, or possible injury.

² Excludes people in or on buses, heavy trucks, motorcycles, or ATVs.

**Figure 8: Seatbelt Use by People in Crashes with Fatal or
Suspected Serious Injuries in Alamogordo, 2012-2016**

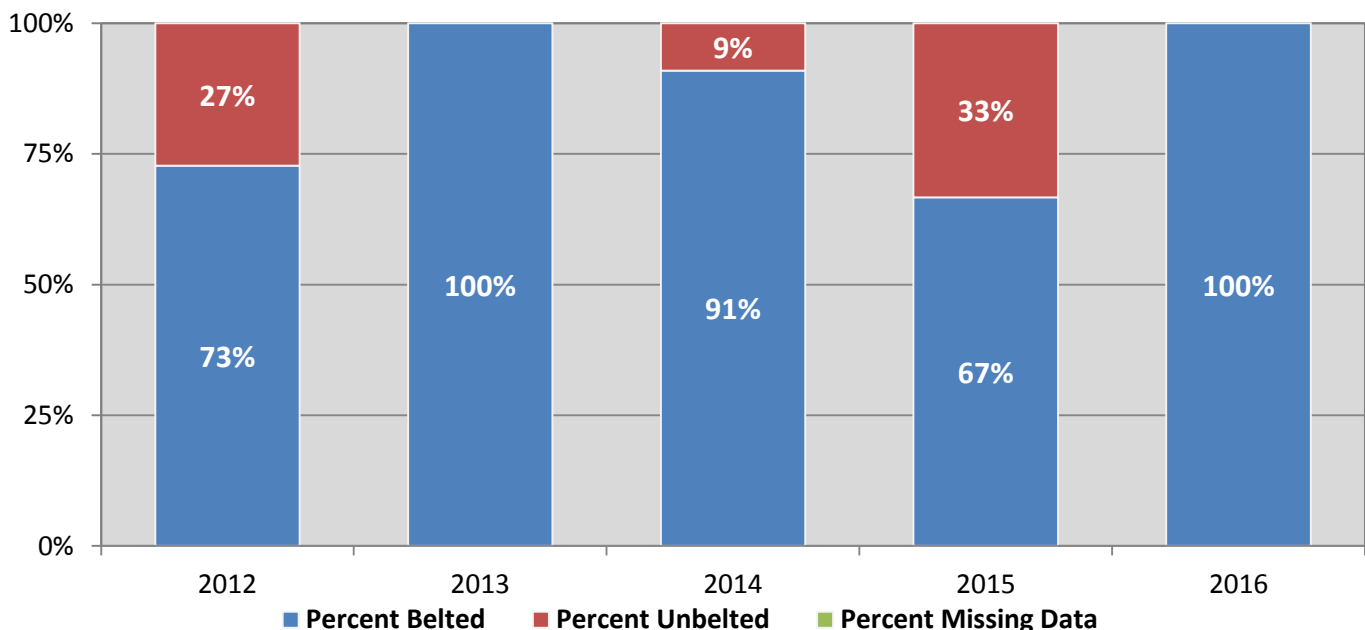
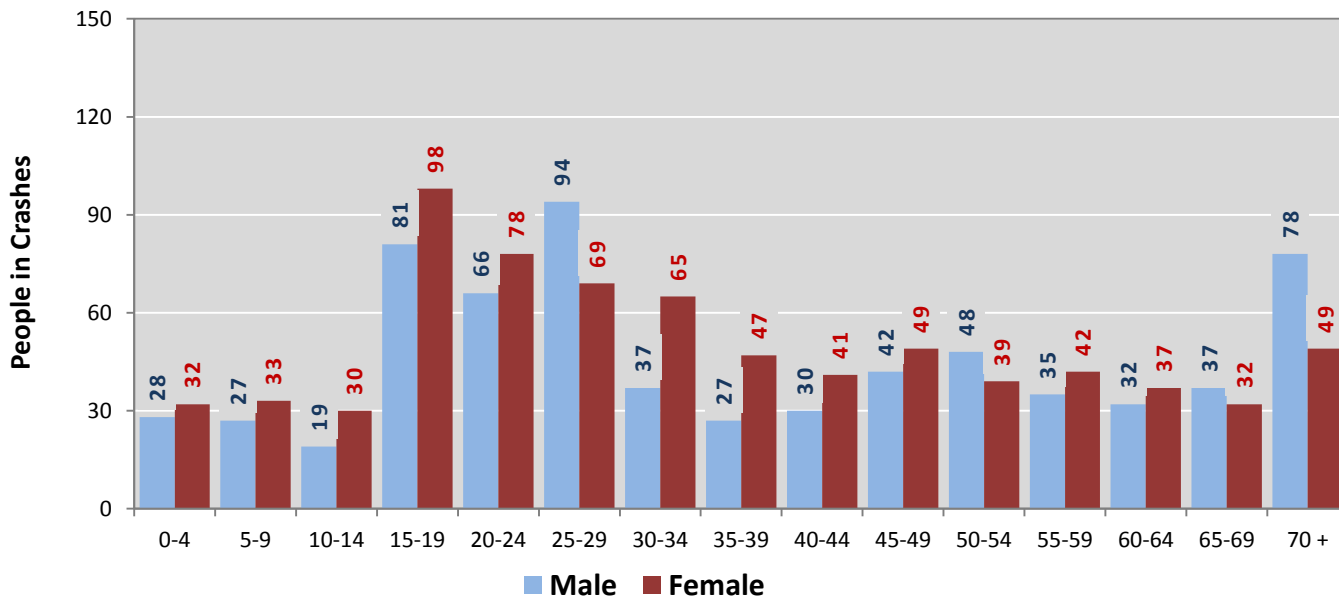
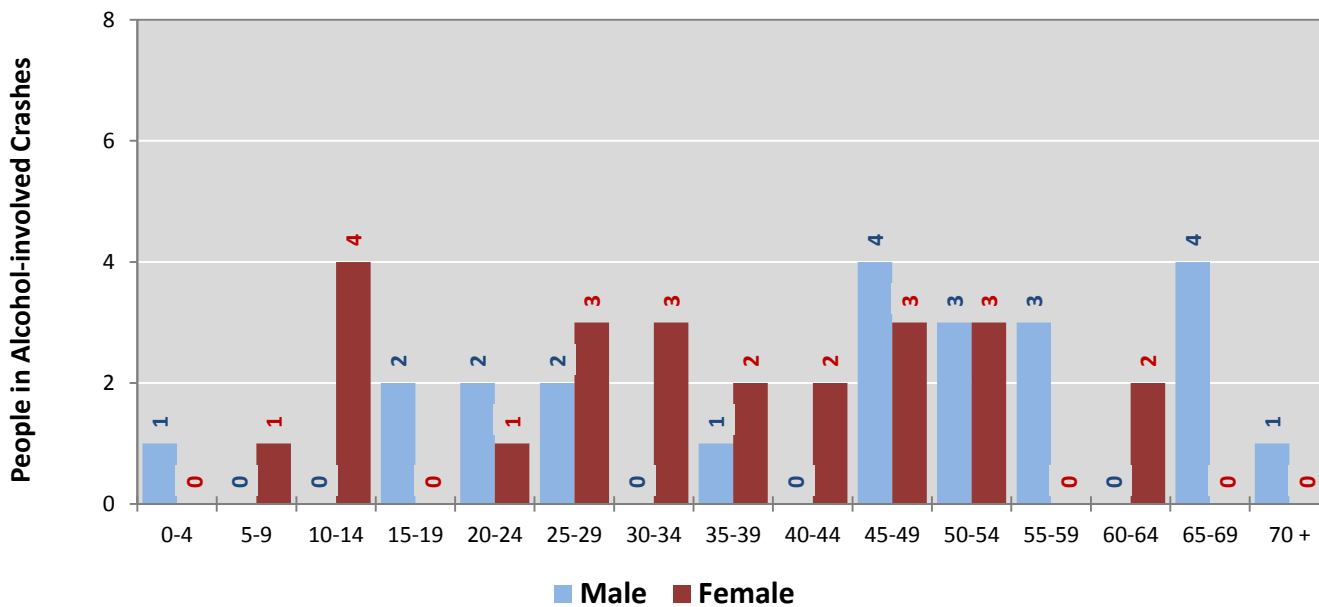


Figure 9: People in Crashes by Age Group and Sex in Alamogordo, 2016



* In 2016, Alamogordo had 163 people in crashes for which age or sex data were missing.

Figure 10: People in Alcohol-involved Crashes by Age Group and Sex in Alamogordo, 2016



* In 2016, Alamogordo had 10 people in alcohol-involved crashes for which age or sex data were missing.

**Table 18: Pedestrians and Pedalcyclists in Crashes
by Age Group in Alamogordo, 2012-2016**

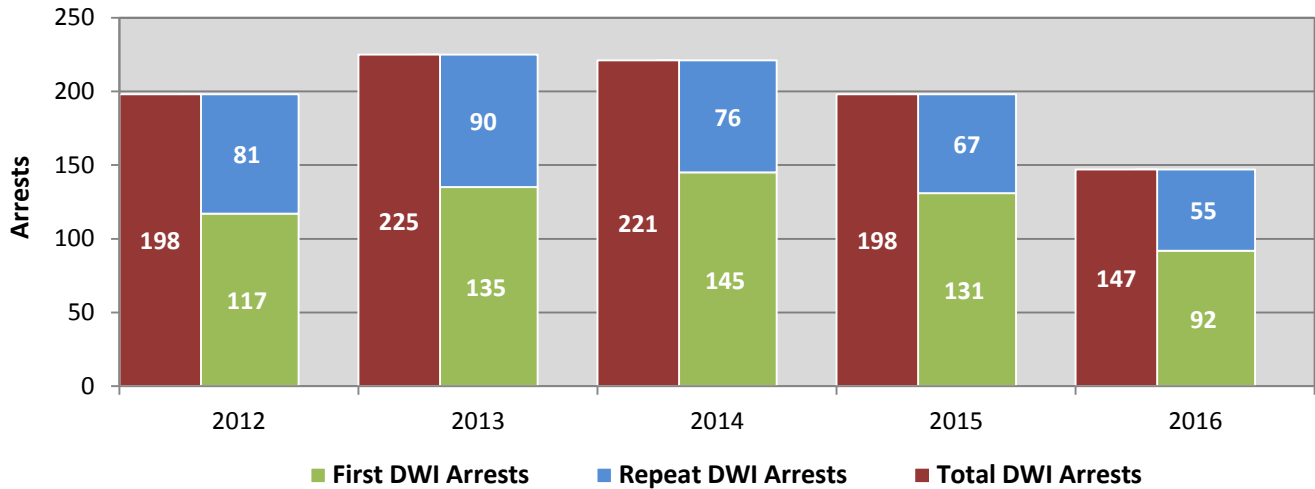
Age Groups	Pedestrians and Pedalcyclists ¹ in Crashes					5-Year Total People
	2012	2013	2014	2015	2016	
0-4	2	0	0	0	0	2
5-9	0	1	0	1	0	2
10-14	1	0	1	1	1	4
15-19	1	3	3	1	3	11
20-24	2	2	0	3	0	7
25-29	1	0	1	2	0	4
30-34	0	2	2	0	1	5
35-39	0	0	2	0	2	4
40-44	2	0	1	1	1	5
45-49	1	2	0	0	2	5
50-54	0	0	1	0	2	3
55-59	1	2	0	0	0	3
60-64	1	0	1	2	0	4
65-69	0	0	0	0	1	1
70 +	0	0	0	1	0	1
Missing Data	1	2	2	2	0	7
Total People	13	14	14	14	13	68

**Table 19: Pedestrians and Pedalcyclists in Crashes by Alcohol Involvement
and Severity of Injuries in Alamogordo, 2016**

Alcohol Involvement	Pedestrians and Pedalcyclists ¹ in Crashes					Total People
	Fatalities (Class K)	Suspected Serious Injuries (Class A)	Suspected Minor Injuries (Class B)	Possible Injuries (Class C)	No Apparent Injury (Class O)	
Total Pedalcyclists	0	0	5	0	0	5
Involved	0	0	0	0	0	0
Not Involved	0	0	5	0	0	5
Total Pedestrians	0	0	5	3	0	8
Involved	0	0	0	0	0	0
Not Involved	0	0	5	3	0	8
Total People	0	0	10	3	0	13

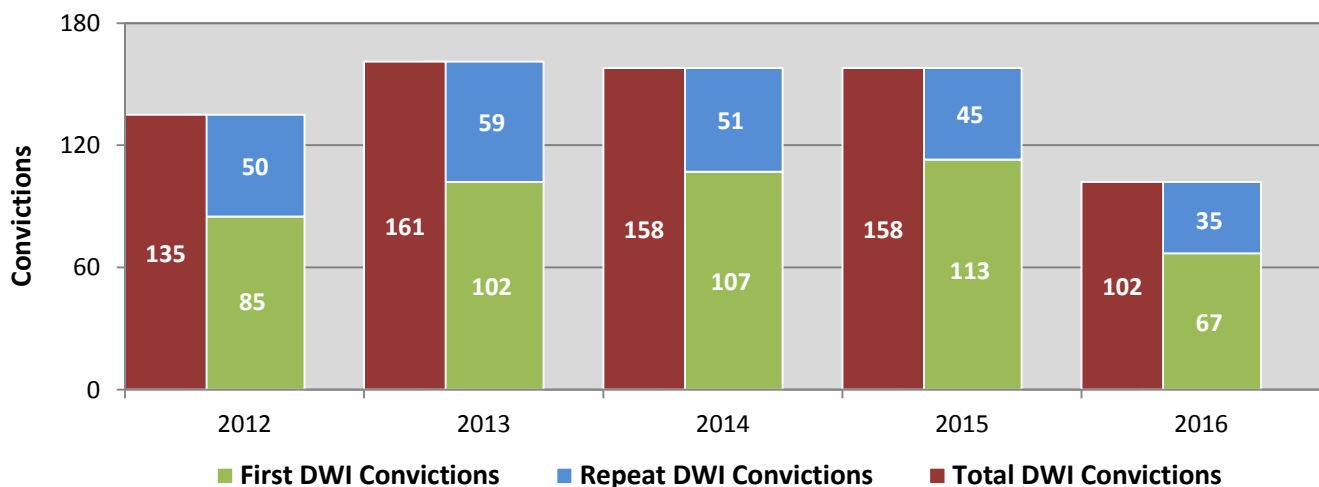
¹ Pedestrians and pedalcyclists are counted as non-motorized vehicles, when involved in a crash with a motor vehicle.

Figure 11: DWI Arrests of Alamogordo Residents Throughout the State, Showing First and Repeat DWI Arrests, 2012-2016



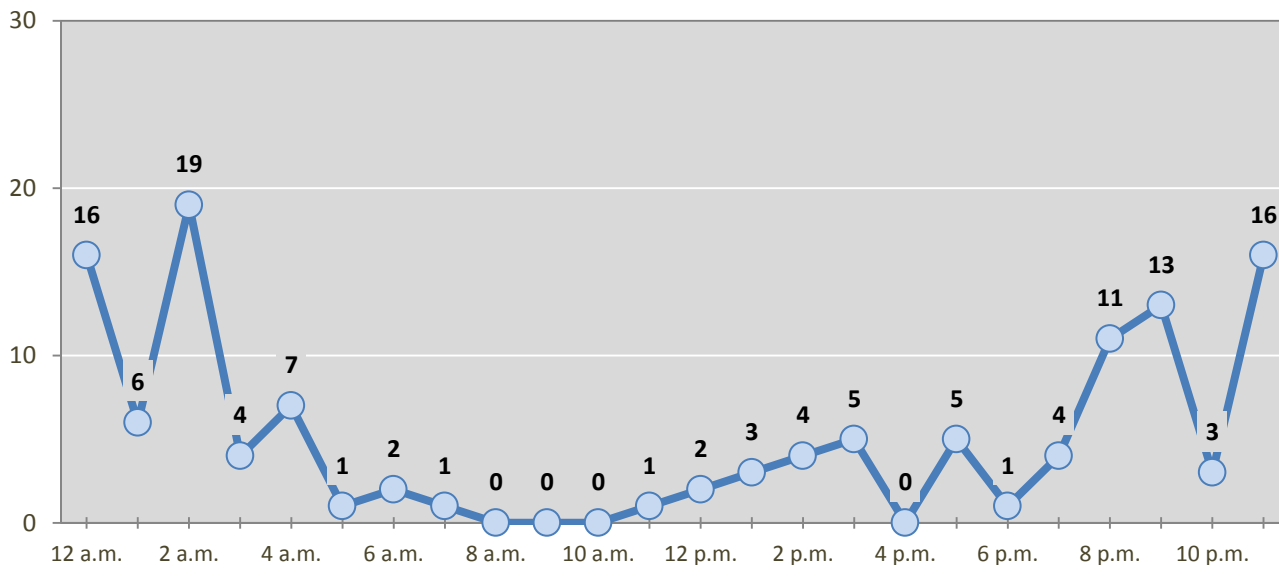
*Values are based upon the year of the arrest.

Figure 12: DWI Convictions of Alamogordo Residents Throughout the State, Showing First and Repeat DWI Convictions, 2012-2016



*Values are based upon the year of the conviction.

Figure 13: DWI Arrests by Hour of Alamogordo Residents Throughout the State, 2016



* In 2016, Alamogordo had 23 arrests for which hour data were missing.

Table 20: DWI Arrests by Day of Week of Alamogordo Residents Throughout the State, 2012-2016

Day of Week	Year					5-Year Average
	2012	2013	2014	2015	2016	
Sunday	46	50	55	49	27	45
Monday	16	17	25	13	16	17
Tuesday	11	20	15	13	13	14
Wednesday	24	21	19	27	11	20
Thursday	16	25	21	28	17	21
Friday	30	36	31	32	23	30
Saturday	55	56	55	36	40	48
Total Arrests	198	225	221	198	147	198

Table 21: Driver First DWI Arrests by Age Group of Alamogordo Residents Throughout the State, 2012-2016

Age Groups	Driver First DWI Arrests ¹				
	2012	2013	2014	2015	2016
15-19	9	9	12	7	5
20-24	34	37	43	32	22
25-29	26	28	25	34	22
30-34	17	23	15	14	5
35-39	2	6	12	6	8
40-44	11	10	8	5	6
45-49	5	3	14	5	5
50-54	4	10	4	8	5
55-59	4	3	5	7	2
60-64	3	1	2	2	3
65-69	1	3	1	1	3
70 +	0	1	2	0	0
Missing Data	1	1	2	10	6
Total Drivers	117	135	145	131	92

¹Values are based upon the year of the arrest.

Table 22: Driver Repeat DWI Arrests by Age Group of Alamogordo Residents Throughout the State, 2012-2016

Age Groups	Driver Repeat DWI Arrests ¹				
	2012	2013	2014	2015	2016
15-19	0	1	0	0	0
20-24	7	9	7	4	3
25-29	16	13	8	14	11
30-34	10	17	13	9	7
35-39	9	12	10	6	10
40-44	9	11	10	10	4
45-49	9	9	13	3	4
50-54	10	12	9	6	5
55-59	7	4	4	4	6
60-64	1	1	0	4	3
65-69	1	1	2	3	1
70 +	2	0	0	1	0
Missing Data	0	0	0	3	1
Total Drivers	81	90	76	67	55

¹Values are based upon the year of the arrest.

Table 23: Driver First DWI Convictions by Age Group of Alamogordo Residents Throughout the State, 2012-2016

Age Groups	Driver First DWI Convictions ¹				
	2012	2013	2014	2015	2016
15-19	4	6	11	4	1
20-24	27	24	36	29	19
25-29	23	22	17	25	14
30-34	10	18	11	8	10
35-39	3	7	4	9	5
40-44	6	10	7	5	2
45-49	2	4	7	8	4
50-54	5	6	5	7	3
55-59	1	1	3	7	4
60-64	4	1	2	0	2
65-69	0	1	2	2	1
70 +	0	1	0	2	0
Missing Data	0	1	2	7	2
Total Drivers	85	102	107	113	67

¹Values are based upon the year of the conviction.

Table 24: Driver Repeat DWI Convictions by Age Group of Alamogordo Residents Throughout the State, 2012-2016

Age Groups	Driver Repeat DWI Convictions ¹				
	2012	2013	2014	2015	2016
15-19	0	0	0	0	0
20-24	3	10	3	5	1
25-29	10	2	6	6	7
30-34	8	14	10	2	4
35-39	3	8	6	8	5
40-44	8	6	8	7	4
45-49	9	4	6	5	5
50-54	5	10	8	7	2
55-59	2	4	3	2	3
60-64	0	0	0	0	1
65-69	2	1	1	2	1
70 +	0	0	0	1	0
Missing Data	0	0	0	0	2
Total Drivers	50	59	51	45	35

¹Values are based upon the year of the conviction.

**Table 25: Court Disposition of DWI Arrests for the State
and of Alamogordo Residents Throughout the State, 2016**

Court Disposition of DWI Arrest ¹	Alamogordo	Statewide	Percent of Statewide
Total DWI Arrests	147	10,344	1.4%
DWI Arrests Resulting in Convictions	91	5,541	1.6%
DWI Arrests Resulting in Dismissals ²	13	1,512	0.9%
DWI Arrests Awaiting Disposition	43	3,291	1.3%

¹ These are the number of DWI arrests in 2016 and whether the case resulted in a conviction or dismissal, or is still awaiting court disposition, as reported in the NM MVD Citation Tracking System (CTS) as of December 2017.

² For this table, a very small number of "not guilty" rulings may be included in the category Dismissals.

**Table 26: Average Number of Days from Date of DWI Arrest to Date of Court Disposition
for the State and of Alamogordo Residents Throughout the State, 2016**

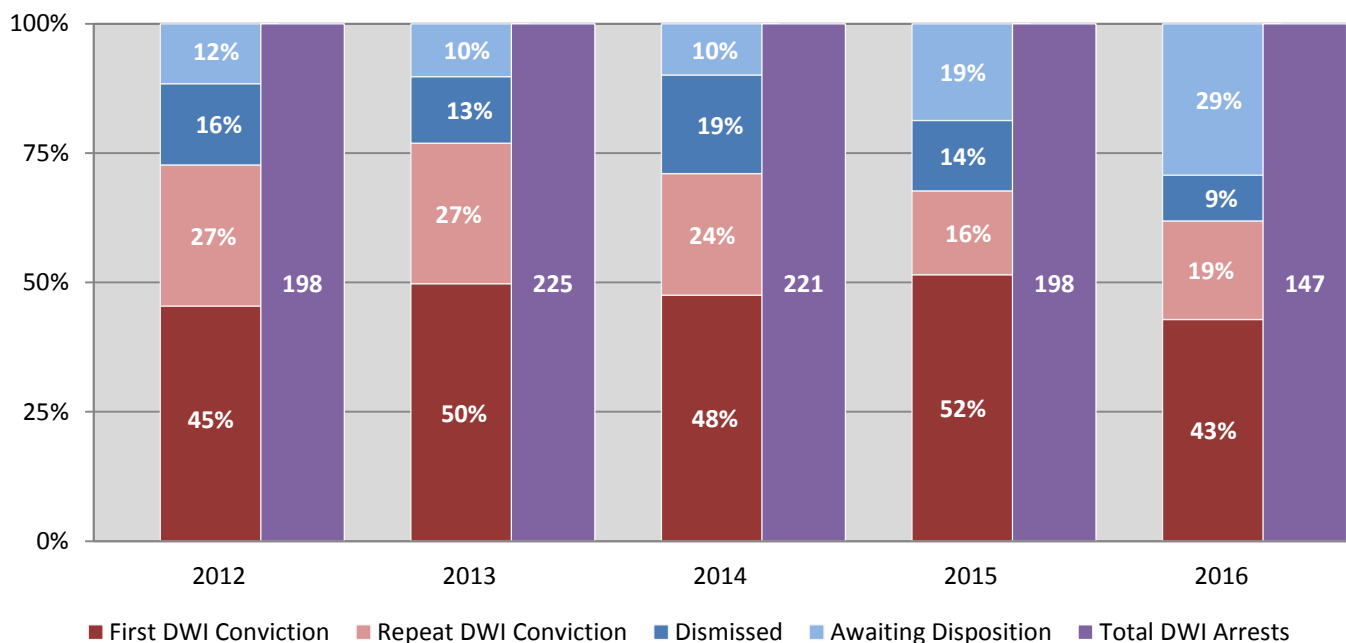
Court Disposition	Average Number of Days		Deviation from Statewide Average
	Alamogordo	Statewide	
DWI Conviction	113	157	-44
DWI Dismissal	200	179	21

Table 27: Court Disposition of DWI Arrests of Alamogordo Residents Throughout the State, 2012-2016

Year of DWI Arrest ¹	Court Disposition				Total DWI Arrests
	First DWI Conviction	Repeat DWI Conviction	Dismissed	Awaiting Disposition	
2012	90	54	31	23	198
2013	112	61	29	23	225
2014	105	52	42	22	221
2015	102	32	27	37	198
2016	63	28	13	43	147

¹ Values are based upon the year of the arrest.

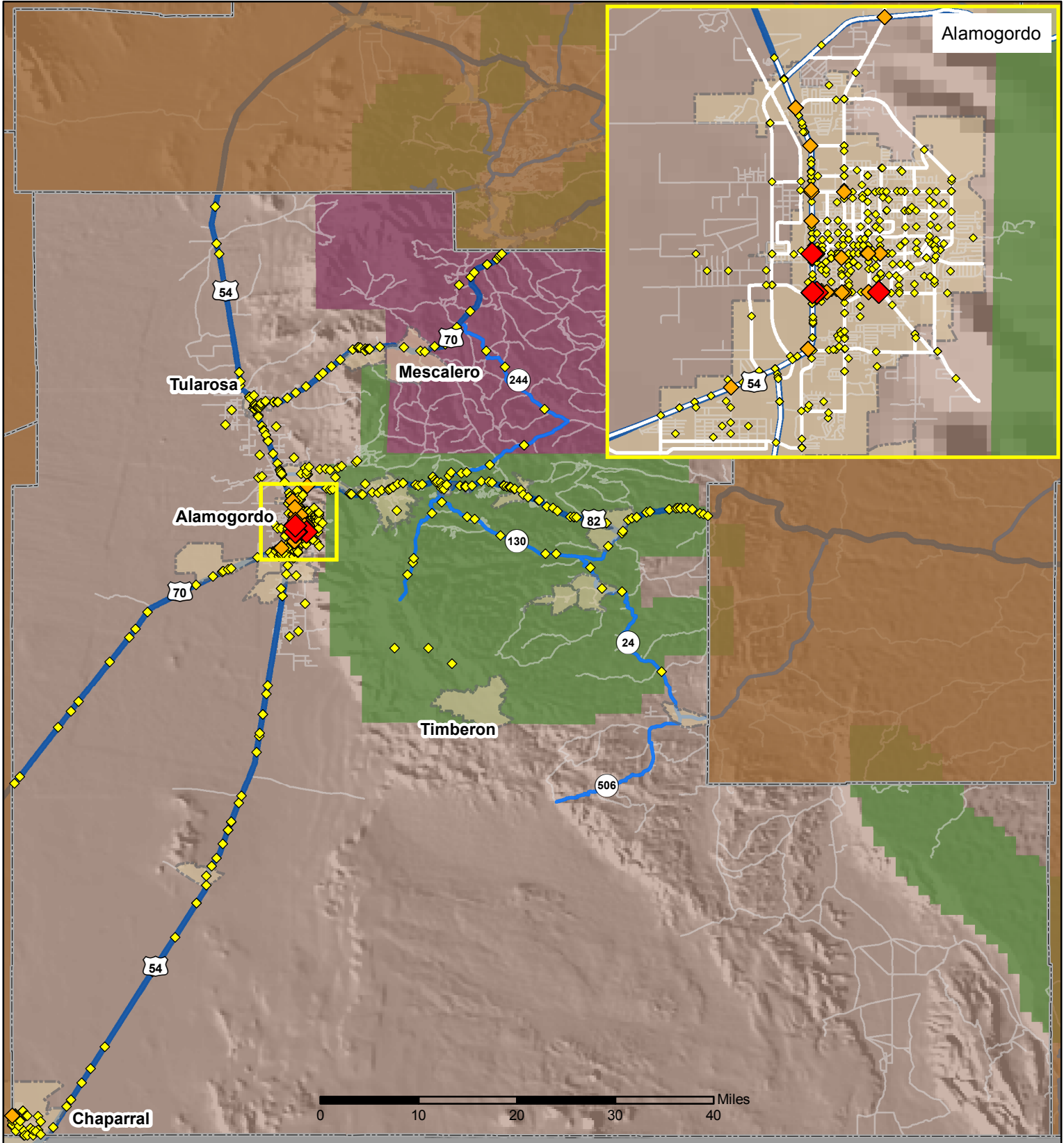
Figure 14: Court Dispositions by Percentage of DWI Arrests of Alamogordo Residents Throughout the State, 2012-2016



*Table 27 contains the values used to calculate percentages shown in Figure 14.

Crashes in Otero County, New Mexico, 2016

Map created by the Traffic Research Unit, Geospatial & Population Studies at UNM



Legend



- Forest & Wildlife Areas
- Reservations & Pueblos
- County Boundaries
- City Boundaries
- Interstate Highways
- U.S. Highways
- State Highways
- Streets & Roadways

Crashes 2016

- 1 - 4 Crashes
- 5 - 10 Crashes
- 11 - 18 Crashes

Data Source: NMDOT Crash File 2016
<http://tru.unm.edu> CO#5801 tru@unm.edu