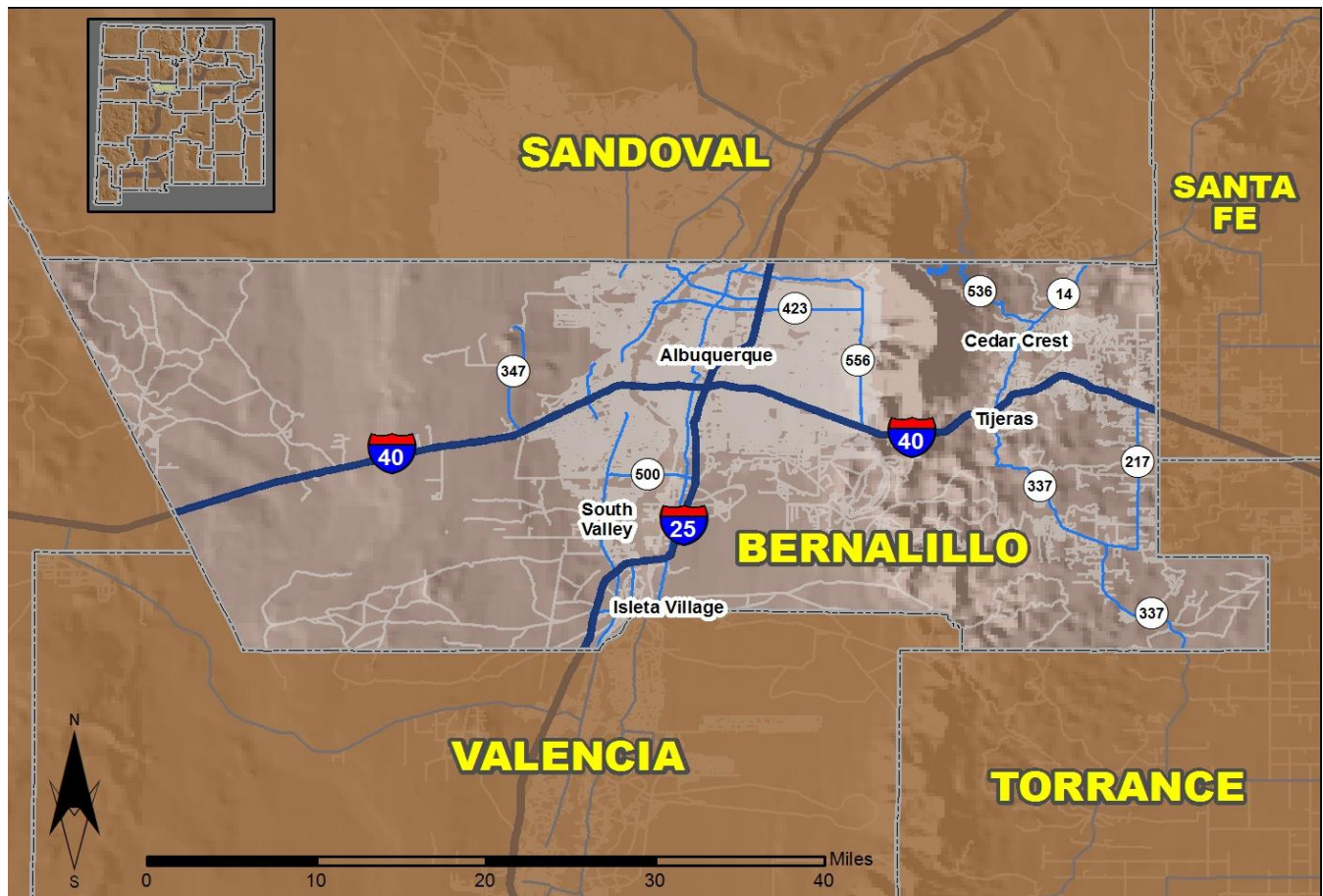


2016 Community Report

Albuquerque



Produced for the New Mexico Department of Transportation,
Traffic Safety Division, Traffic Records Bureau,
Under Contract 5801 by the University of New Mexico,
Geospatial and Population Studies, Traffic Research Unit

Distributed in compliance with New Mexico Statute 66-7-214
as a reference source regarding New Mexico traffic crashes

For the purposes of this report, data are compiled by the University of New Mexico, Geospatial and Population Studies, Traffic Research Unit (TRU), on behalf of the New Mexico Department of Transportation (NMDOT). Data in this report may differ from that in other data sources, such as the Federal Fatality Analysis Reporting System (FARS), due to the timing of publications and rules for how data are compiled and maintained in Federal vs. State databases. If you have questions regarding this report, please contact the Traffic Safety Division at 505-827-0427.

<http://tru.unm.edu/Crash-Reports/Community-Reports/>

Definitions

Aggravated DWI – A driver arrested for 1) driving with a BAC of 0.16 or higher, 2) driving under the influence of alcohol or drugs and causing bodily injury to a human being as a result, or 3) driving under the influence of alcohol or drugs and refusing to submit to a BAC test at the time of arrest for DWI.

Alcohol-involved Crash – A crash for which the Uniform Crash Report indicated that 1) a DWI citation was issued, 2) alcohol was a contributing factor, or 3) a person in control of a vehicle (including a pedestrian or pedalcyclist) was suspected of being under the influence of alcohol.

Alcohol-involved Driver – A person in control of a vehicle who was cited for DWI or indicated on the Uniform Crash Report as being either suspected or determined by testing to be under the influence of alcohol. There can be multiple alcohol-involved drivers in a single alcohol-involved crash.

Crash – A reported incident on a public roadway involving one or more motor vehicles that resulted in death, personal injury, or at least \$500 in property damage. Crashes on private property (such as a parking lot) are not included.

DWI Arrest (Citation) – In this report, a DWI arrest (a.k.a. a DWI citation) is a driver arrested for either DWI or aggravated DWI. New Mexico’s legal limit for presumption of driving while intoxicated (DWI) is 0.08 for non-commercial drivers older than 21 years of age, 0.04 for commercial vehicle drivers, and 0.02 for drivers younger than 21 years of age.

DWI Conviction – A driver convicted of driving under the intoxicating influence of alcohol, narcotics, or pathogenic drugs, including aggravated DWI.

Fatal Crash – A crash in which at least one person was killed. More than one person can be killed in a single fatal crash.

Fatalities – The number of people killed in a crash. The terms “killed” and “deaths” are synonymous with “fatalities.” A fatality is crash-related if it occurs at the time of the crash or if the person(s) involved in the crash dies within 30 days.

Injury Crash – A reported crash in which at least one person was injured. Injury crashes involve at least one suspected serious injury (Class A), suspected minor injury (Class B), or possible injury (Class C). Fatal crashes are not included.

Missing Data – An indication that the applicable field on the UCR form was left blank or contained an invalid code. Starting with crashes that occurred in 2012, improvements in the identification of missing data in the NMDOT crash database led to an increase in the reported amount of missing data.

Pedalcyclist – A person riding a mechanism of transport that is powered solely by pedals (a.k.a. bicyclist).

Pedestrian – A person on foot, walking, running, jogging, hiking, sitting or lying down who is involved in a motor vehicle traffic crash.

Sources

Crash Data – New Mexico Department of Transportation, Traffic Safety Division, Traffic Records Bureau, Traffic Crash Database, as of the report date below. Crash data are compiled using NMDOT Uniform Crash Reports (UCR), submitted by law enforcement agencies in the state, for any incident on a public roadway involving one or more motor vehicles that resulted in death, injury, or at least \$500 in property damage. These reports are processed by the NMDOT Traffic Records Bureau and analyzed by the University of New Mexico, Geospatial and Population Studies, Traffic Research Unit (TRU).

DWI Citation Tracking System (CTS) – New Mexico Taxation and Revenue Department (NM TRD), Motor Vehicle Division (MVD), DWI Citation Tracking System (CTS), as of December 2017. Repeat offenders are identified by the combination of account key, arrest date, and citation number. County data are based upon the county where the arrest took place. City data are based upon the city where the offender resides.

Urban Areas – New Mexico Department of Transportation, Asset Management and Planning, 2010 U.S. Census Urbanized Area Boundaries, NMDOT-Adjusted, and U.S. Census Urban Clusters, August 21, 2013. In crashes before 2013, “urban” was defined as a town or city with a population of at least 2,500 people.

Table 1: Total Crashes and Alcohol-involved Crashes by Crash Severity in Albuquerque, 2007-2016

Year	Total Crashes				Alcohol-involved Crashes			
	Fatal	Injury	Property Damage Only	Total	Fatal	Injury	Property Damage Only	Total
2007	55	5,505	15,391	20,951	27	328	411	766
2008	46	5,119	13,796	18,961	18	289	423	730
2009	45	5,050	13,207	18,302	18	308	475	801
2010	35	4,621	11,835	16,491	17	229	312	558
2011	36	4,866	12,132	17,034	14	288	352	654
2012	55	4,136	11,886	16,077	20	230	342	592
2013	45	4,463	11,466	15,974	23	238	305	566
2014	59	4,897	12,758	17,714	30	275	303	608
2015	52	5,656	13,484	19,192	30	278	345	653
2016	90	6,054	12,989	19,133	47	302	322	671

Figure 1: Alcohol-involved Fatal and Injury Crashes Compared with Non-alcohol-involved Fatal and Injury Crashes in Albuquerque, 2007-2016

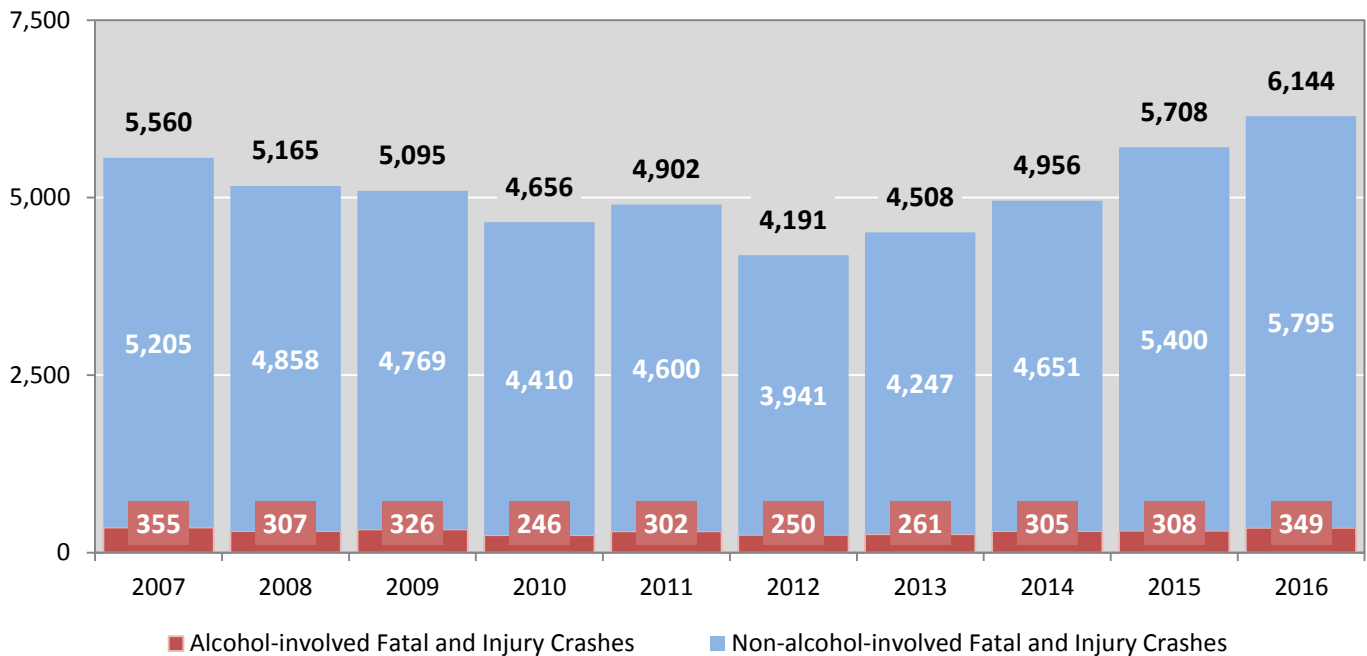


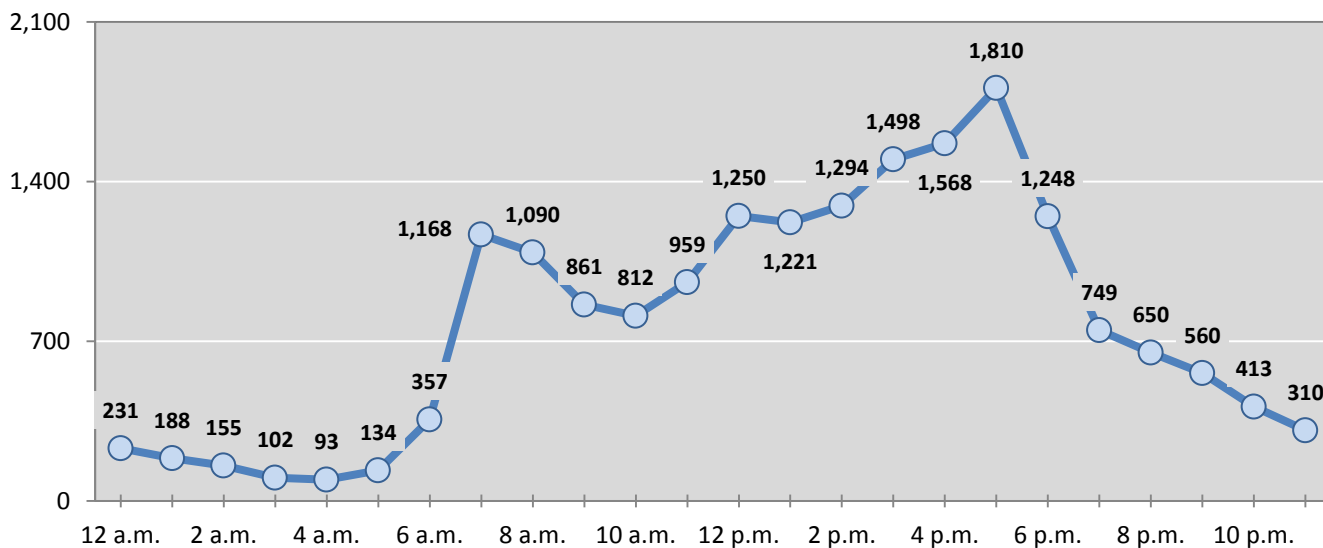
Table 2: Crashes by Month in Albuquerque, 2012-2016

Month	Crashes					5-Year Average
	2012	2013	2014	2015	2016	
January	1,281	1,290	1,386	1,531	1,329	1,363
February	646	1,216	1,380	1,652	1,480	1,275
March	770	1,260	1,518	1,614	1,566	1,346
April	1,487	1,106	1,383	1,555	1,383	1,383
May	1,565	1,234	1,502	1,584	1,596	1,496
June	1,534	1,247	1,398	1,561	1,415	1,431
July	1,456	1,322	1,456	1,554	1,390	1,436
August	1,636	1,526	1,484	1,471	1,801	1,584
September	1,027	1,549	1,622	1,676	1,759	1,527
October	1,484	1,759	1,478	1,764	1,866	1,670
November	1,595	1,331	1,543	1,587	1,749	1,561
December	1,596	1,134	1,564	1,643	1,799	1,547
Total Crashes	16,077	15,974	17,714	19,192	19,133	17,618

Table 3: Alcohol-involved Crashes by Month in Albuquerque, 2012-2016

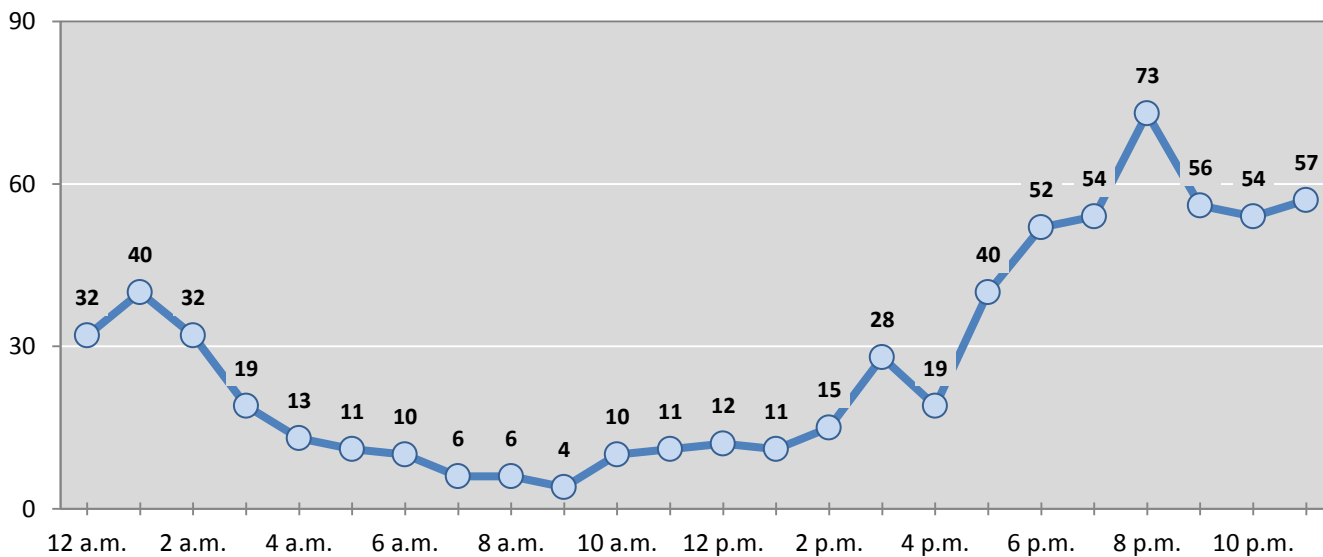
Month	Alcohol-involved Crashes					5-Year Average
	2012	2013	2014	2015	2016	
January	51	49	49	60	56	53
February	24	48	39	60	78	50
March	33	53	48	51	61	49
April	54	36	38	67	47	48
May	64	54	55	57	51	56
June	49	47	54	60	45	51
July	63	49	57	45	47	52
August	36	47	56	52	57	50
September	48	44	51	59	58	52
October	54	54	45	59	64	55
November	52	51	62	46	49	52
December	64	34	54	37	58	49
Total Crashes	592	566	608	653	671	618

Figure 2: Crashes by Hour in Albuquerque, 2016



* In 2016, Albuquerque had 412 crashes for which hour data were missing.

Figure 3: Alcohol-involved Crashes by Hour in Albuquerque, 2016



* In 2016, Albuquerque had 6 alcohol-involved crashes for which hour data were missing.

Table 4: Alcohol-involved Crashes by Day of Week in Albuquerque, 2012-2016

Day of Week	Alcohol-involved Crashes					5-Year Average
	2012	2013	2014	2015	2016	
Sunday	109	89	98	99	100	99
Monday	52	49	71	73	63	62
Tuesday	49	50	76	68	74	63
Wednesday	58	73	78	89	92	78
Thursday	82	82	60	89	94	81
Friday	84	90	100	102	112	98
Saturday	158	133	125	133	136	137
Total Crashes	592	566	608	653	671	618

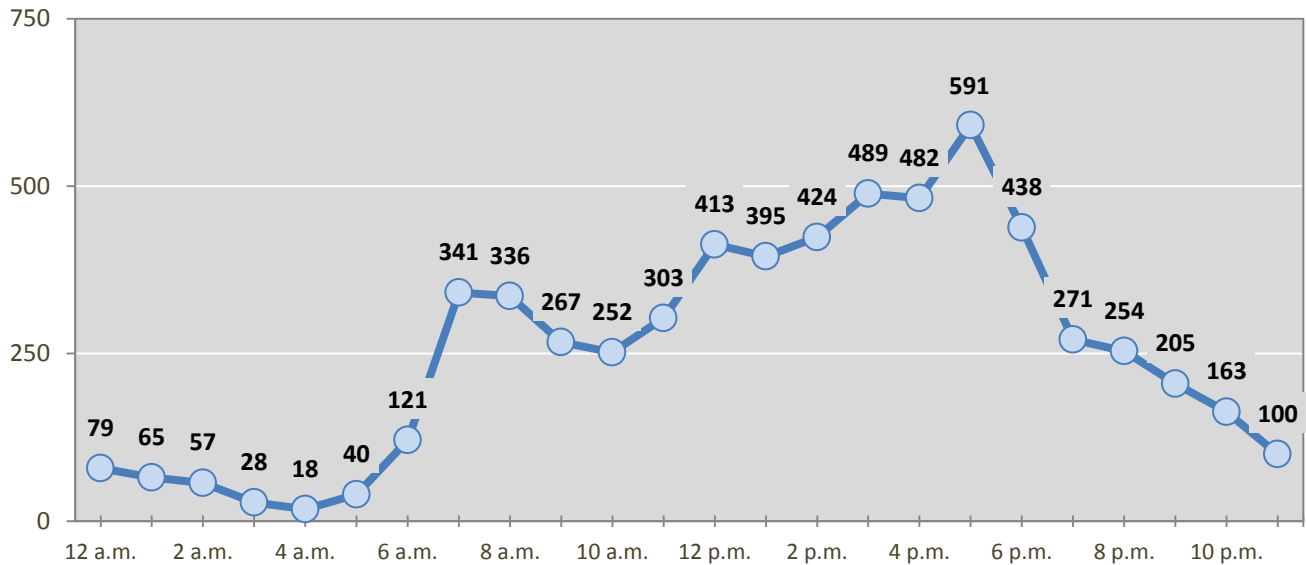
Table 5: Fatal and Injury Crashes by Day of Week in Albuquerque, 2012-2016

Day of Week	Fatal and Injury Crashes					5-Year Average
	2012	2013	2014	2015	2016	
Sunday	360	415	443	514	535	453
Monday	570	717	760	831	900	756
Tuesday	616	647	716	900	901	756
Wednesday	733	695	813	866	1,039	829
Thursday	630	697	791	856	946	784
Friday	766	788	829	972	1,027	876
Saturday	516	549	604	769	796	647
Total Crashes	4,191	4,508	4,956	5,708	6,144	5,101

Table 6: Pedestrian and Pedalcyclist Crashes by Day of Week in Albuquerque, 2012-2016

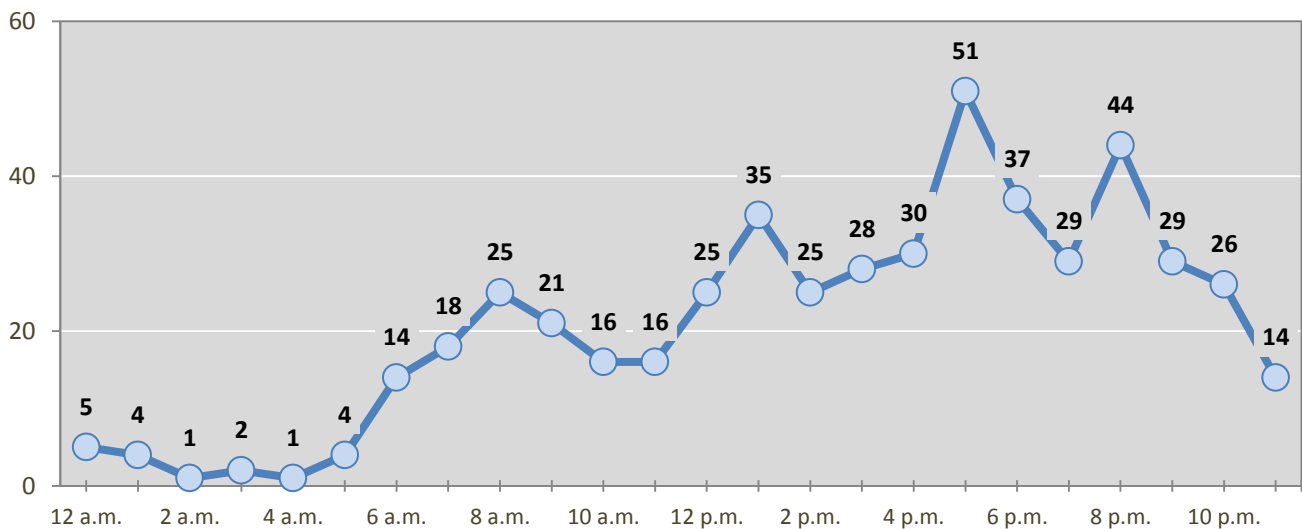
Day of Week	Pedestrian and Pedalcyclist Crashes					5-Year Average
	2012	2013	2014	2015	2016	
Sunday	32	43	39	44	35	39
Monday	59	45	66	77	82	66
Tuesday	49	63	74	93	94	75
Wednesday	64	66	71	64	89	71
Thursday	71	67	76	92	78	77
Friday	74	61	90	84	73	76
Saturday	64	45	49	49	50	51
Total Crashes	413	390	465	503	501	454

Figure 4: Fatal and Injury Crashes by Hour in Albuquerque, 2016



* In 2016, Albuquerque had 12 crashes for which hour data were missing.

Figure 5: Pedestrian and Pedalcyclist Crashes by Hour in Albuquerque, 2016



* In 2016, Albuquerque had 1 crashes for which hour data were missing.

Table 7: Severity of Injuries to People in Crashes by Rural and Urban Location in Albuquerque, 2016

Urban and Rural Locations by Alcohol-involvement	People in Crashes by Severity of Injuries					Total People
	Fatalities (Class K)	Suspected Serious Injuries (Class A)	Suspected Minor Injuries (Class B)	Possible Injuries (Class C)	No Apparent Injuries (Class O)	
People in Alcohol-involved Crashes	49	64	181	252	1,116	1,662
Urban	49	64	181	252	1,116	1,662
Rural Non-Interstate	0	0	0	0	0	0
Rural Interstate	0	0	0	0	0	0
People in Crashes	95	509	1,765	6,814	40,757	49,940
Urban	95	509	1,765	6,814	40,757	49,940
Rural Non-Interstate	0	0	0	0	0	0
Rural Interstate	0	0	0	0	0	0
Percent in Alcohol-involved Crashes	52%	13%	10%	4%	3%	3%

Table 8: Total Crashes by Roadway System and Crash Severity in Albuquerque, 2012-2016

Crash Severity by System	Crashes by Year					5-Year Average
	2012	2013	2014	2015	2016	
Total Rural Interstate	0	25	7	0	0	6
Fatal Crash	0	1	0	0	0	0
Injury Crash	0	6	1	0	0	1
Property Damage Only Crash	0	18	6	0	0	5
Total Rural Non-Interstate	5	16	7	0	0	6
Fatal Crash	0	0	0	0	0	0
Injury Crash	1	2	2	0	0	1
Property Damage Only Crash	4	14	5	0	0	5
Total Urban	16,072	15,933	17,700	19,192	19,133	17,606
Fatal Crash	55	44	59	52	90	60
Injury Crash	4,135	4,455	4,894	5,656	6,054	5,039
Property Damage Only Crash	11,882	11,434	12,747	13,484	12,989	12,507

Table 9: Total Crashes by Crash Classification in Albuquerque, 2012-2016

Crash Classification	Total Crashes by Year					5-Year Average
	2012	2013	2014	2015	2016	
Animal	19	17	17	16	25	19
Fixed Object	1,032	1,098	1,107	1,258	1,328	1,165
Other (Non-Collision)	132	116	118	100	126	118
Other (Object)	245	193	254	242	210	229
Other Vehicle	12,300	12,356	13,590	15,024	15,118	13,678
Overturn/Rollover	155	164	141	126	114	140
Parked Vehicle	1,122	936	1,011	812	664	909
Pedalcyclist	201	159	163	177	192	178
Pedestrian	237	236	296	328	312	282
Railroad Train	0	2	5	0	2	2
Rollover	0	0	4	82	58	29
Vehicle on Other Road	60	77	118	33	138	85
Missing Data	574	620	890	994	846	785
Total Crashes	16,077	15,974	17,714	19,192	19,133	17,618

Table 10: Vehicles in Crashes by Vehicle Type in Albuquerque, 2012-2016

Vehicle Type ¹	Vehicles in Crashes by Vehicle Type					5-Year Average
	2012	2013	2014	2015	2016	
Bus	187	179	204	198	259	205
Motorcycle	429	399	434	462	460	437
Passenger	16,039	16,369	17,259	20,366	22,544	18,515
Pedalcyclist	206	163	165	179	194	181
Pedestrian	221	239	312	333	334	288
Pickup	4,158	4,217	4,511	4,953	5,512	4,670
Semi	473	511	558	645	687	575
Van/SUV/4WD	4,293	4,390	4,895	5,013	5,796	4,877
Other Vehicle	1,436	1,679	493	823	100	906
Missing Data	4,208	3,481	6,099	5,557	2,661	4,401
Total Vehicles	31,650	31,627	34,930	38,529	38,547	35,057

¹ Pedestrians and pedalcyclists are counted as non-motorized vehicles, when involved in a crash with a motor vehicle. See Page 17 for data on drivers of non-motorized vehicles in crashes (i.e. pedestrians and pedalcyclists).

Table 11: Motor Vehicle Drivers in Crashes by Vehicle Type and Age Group in Albuquerque, 2016

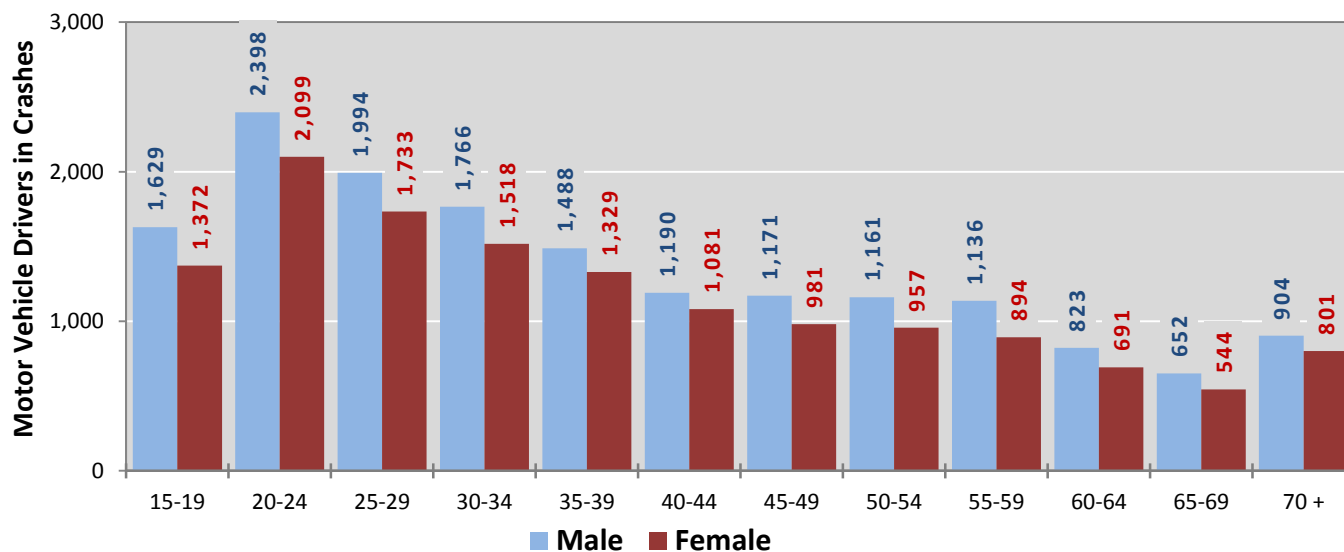
Age Groups	Motor Vehicle ¹ Drivers by Vehicle Type and Age Group								Total Drivers
	Bus	Motor-cycle	Passenger	Pickup	Semi	Van 4WD SUV	Other Vehicle	Missing Data	
15-19	0	43	2,305	331	8	344	7	77	3,115
20-24	13	83	3,506	453	26	455	10	119	4,665
25-29	29	68	2,596	445	60	555	8	94	3,855
30-34	11	52	2,102	505	82	583	5	79	3,419
35-39	16	33	1,665	480	77	580	6	64	2,921
40-44	21	23	1,393	381	54	410	6	66	2,354
45-49	25	31	1,231	418	75	380	6	57	2,223
50-54	35	43	1,185	396	69	390	5	63	2,186
55-59	59	28	1,152	396	70	353	6	32	2,096
60-64	31	14	818	319	40	307	4	38	1,571
65-69	5	11	739	209	18	221	3	33	1,239
70 +	2	4	1,187	233	8	298	7	47	1,786
Missing Data	12	27	2,665	946	100	920	27	1,892	6,589
Total Drivers	259	460	22,544	5,512	687	5,796	100	2,661	38,019

Table 12: Alcohol-involved Motor Vehicle Drivers in Crashes by Vehicle Type and Age Group in Albuquerque, 2016

Age Groups	Alcohol-involved Motor Vehicle ¹ Drivers by Vehicle Type and Age Group								Total Drivers
	Bus	Motor-cycle	Passenger	Pickup	Semi	Van 4WD SUV	Other Vehicle	Missing Data	
15-19	0	0	24	7	0	6	0	0	37
20-24	0	1	86	6	0	13	2	0	108
25-29	0	5	68	16	0	13	0	2	104
30-34	0	2	51	20	0	5	0	0	78
35-39	0	1	35	12	0	8	0	2	58
40-44	0	0	21	3	0	5	0	0	29
45-49	0	1	26	16	0	5	0	0	48
50-54	0	2	23	6	0	4	0	0	35
55-59	0	0	15	9	0	3	0	0	27
60-64	0	0	8	1	0	2	0	0	11
65-69	0	0	6	1	0	1	0	0	8
70 +	0	0	3	1	0	1	0	1	6
Missing Data	0	1	28	8	1	6	0	9	53
Total Drivers	0	13	394	106	1	72	2	14	602

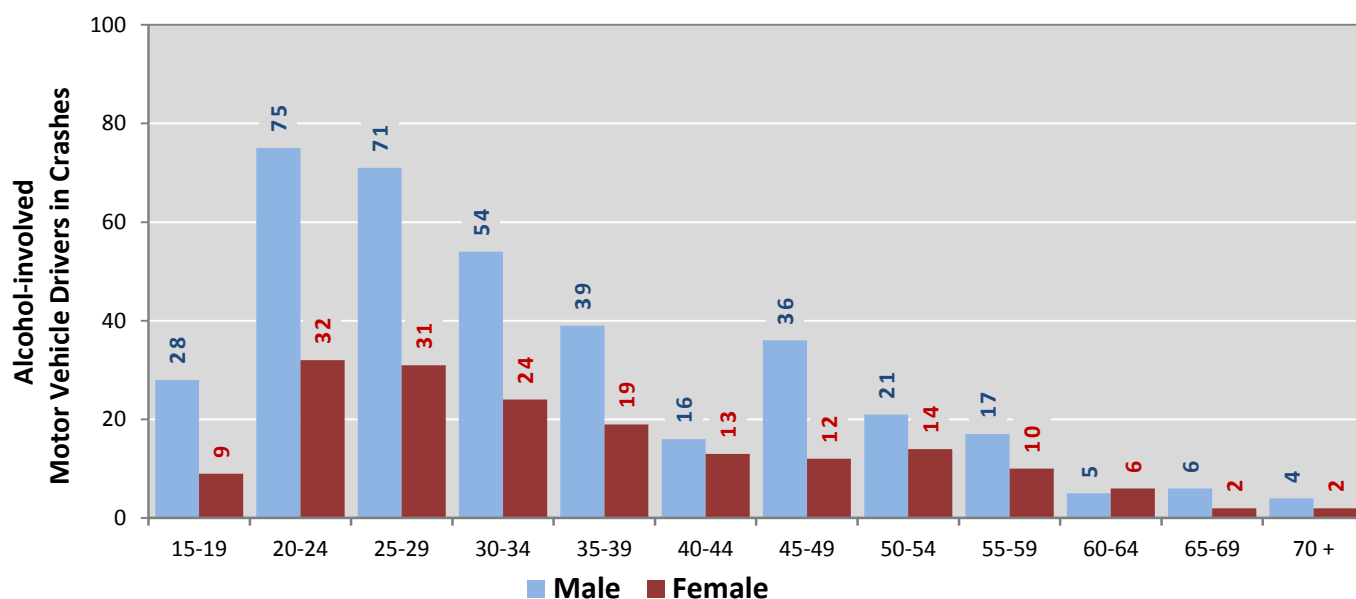
¹ See Page 17 for data on drivers of non-motorized vehicles in crashes (i.e. pedestrians and pedalcyclists).

Figure 6: Motor Vehicle Drivers in Crashes by Age Group and Sex in Albuquerque, 2016



* In 2016, Albuquerque had 7707 drivers in crashes for which age or sex data were missing.

Figure 7: Alcohol-involved Motor Vehicle Drivers in Crashes by Age Group and Sex in Albuquerque, 2016



* In 2016, Albuquerque had 56 drivers in crashes for which age or sex data were missing.

Table 13: Alcohol-involved Motor Vehicle Drivers Under 21 (Ages 15-20) in Crashes in Albuquerque, 2012-2016

Age ¹	Year					5-Year Total
	2012	2013	2014	2015	2016	
15	1	0	0	0	1	2
16	0	2	2	1	3	8
17	8	0	4	3	7	22
18	10	8	5	6	12	41
19	11	7	12	8	14	52
20	19	19	12	17	16	83
Total Drivers	49	36	35	35	53	208

Table 14: Motor Vehicle Drivers Under 21 (Ages 15-20) in Crashes by Age, Sex and Alcohol-involvement in Albuquerque, 2016

Age ¹	Total Drivers				Alcohol-involved Drivers			
	Sex		Total Drivers	Percent of Total	Sex		Total Drivers	Percent of Total
	Male	Female			Male	Female		
15	60	68	128	3%	0	1	1	2%
16	243	195	438	11%	2	1	3	6%
17	350	316	666	17%	6	1	7	13%
18	482	368	850	21%	10	2	12	23%
19	494	425	919	23%	10	4	14	26%
20	536	466	1002	25%	11	5	16	30%
Total Drivers	2,165	1,838	4,003	100%	39	14	53	100%

¹ For analysis of drivers under age 21, when the driver age or sex are not identified on the crash report (typically hit-and-run drivers), the driver data are considered unreliable and are excluded from the analysis.

**Table 15: Frequency of Contributing Factors in Crashes
by Crash Severity in Albuquerque, 2016**

Contributing Factors	Frequency of Contributing Factor ¹ by Crash Severity			
	Frequency in Fatal Crashes	Frequency in Injury Crashes	Frequency in Property Damage Only Crashes	Frequency in All Crashes
Human	221	10,274	19,294	29,789
Driver Inattention	36	4,013	7,089	11,138
Failed to Yield Right of Way	14	1,332	1,792	3,138
Following Too Closely	1	840	1,967	2,808
Other Improper Driving	12	581	1,256	1,849
Excessive Speed	27	574	1,057	1,658
Disregarded Traffic Signal	10	673	849	1,532
Made Improper Turn	1	283	888	1,172
Improper Lane Change	1	194	839	1,034
Avoid No Contact - Other	6	356	530	892
Speed Too Fast for Conditions	11	271	546	828
Avoid No Contact - Vehicle	5	212	483	700
Alcohol Involved	47	307	325	679
Improper Overtaking	1	103	480	584
Improper Backing	0	17	329	346
Passed Stop Sign	1	99	194	294
Drove Left Of Center	3	98	153	254
Cell Phone	0	56	176	232
Pedestrian Error	22	159	29	210
Vehicle Skidded Before Brake	1	30	128	159
Drug Involved	21	47	74	142
Failed to Yield to Police Vehicle	0	15	31	46
Driverless Moving Vehicle	0	3	40	43
Failed to Yield to Emergency Vehicle	0	3	20	23
High Speed Pursuit	0	5	15	20
Texting	1	3	4	8
Vehicle	3	203	420	626
Inadequate Brakes	1	88	206	295
Other Mechanical Defect	0	69	114	183
Defective Tires	2	29	52	83
Defective Steering	0	17	48	65
Environment	0	14	50	64
Traffic Control Not Functioning	0	9	21	30
Road Defect	0	5	20	25
Low Visibility Due to Smoke	0	0	9	9
Other	58	6,179	9,493	15,730
None	47	5,466	8,083	13,596
Other - No Driver Error	11	713	1,410	2,134

¹ Multiple contributing factors may be reported for any vehicle in a crash.

Table 16: People in Crashes by Crash Classification and Severity of Injuries in Albuquerque, 2016

Crash Classification	People in Crashes by Severity of Injuries					Total People
	Fatalities (Class K)	Suspected Serious Injuries (Class A)	Suspected Minor Injuries (Class B)	Possible Injuries (Class C)	No Apparent Injuries (Class O)	
Animal	0	0	1	2	28	31
Fixed Object	11	53	166	231	1,383	1,844
Other (Non-Collision)	0	4	34	16	141	195
Other (Object)	0	0	18	28	313	359
Other Vehicle	35	348	1,255	6,246	34,532	42,416
Overturn/Rollover	8	14	45	43	69	179
Parked Vehicle	0	4	13	20	1,381	1,418
Pedalcyclist	1	16	87	67	254	425
Pedestrian	34	56	114	126	420	750
Railroad Train	0	0	0	1	6	7
Rollover	6	12	30	18	27	93
Vehicle on Other Road	0	2	2	6	320	330
Missing Data	0	0	0	10	1,883	1,893
Total People	95	509	1,765	6,814	40,757	49,940

Table 17: Killed or Injured Unbelted People in Crashes by Sex and Age Group in Albuquerque, 2016

Age Groups	Unbelted People Killed or Injured ^{1,2}				Total People
	Male	Percent of Male	Female	Percent of Female	
0-4	6	7%	5	7%	11
5-9	4	5%	2	3%	6
10-14	6	7%	6	8%	12
15-19	11	13%	8	11%	19
20-24	19	22%	16	23%	35
25-29	17	20%	8	11%	25
30-34	3	3%	4	6%	7
35-39	6	7%	5	7%	11
40-44	3	3%	5	7%	8
45-49	3	3%	4	6%	7
50-54	2	2%	3	4%	5
55-59	2	2%	2	3%	4
60-64	1	1%	1	1%	2
65-69	1	1%	0	0%	1
70 +	1	1%	2	3%	3
Missing Data	2	2%	0	0%	2
Total People	87	100%	71	100%	158

¹ People injured are in one of three categories: suspected serious injury, suspected minor injury, or possible injury.

² Excludes people in or on buses, heavy trucks, motorcycles, or ATVs.

Figure 8: Seatbelt Use by People in Crashes with Fatal or Suspected Serious Injuries in Albuquerque, 2012-2016

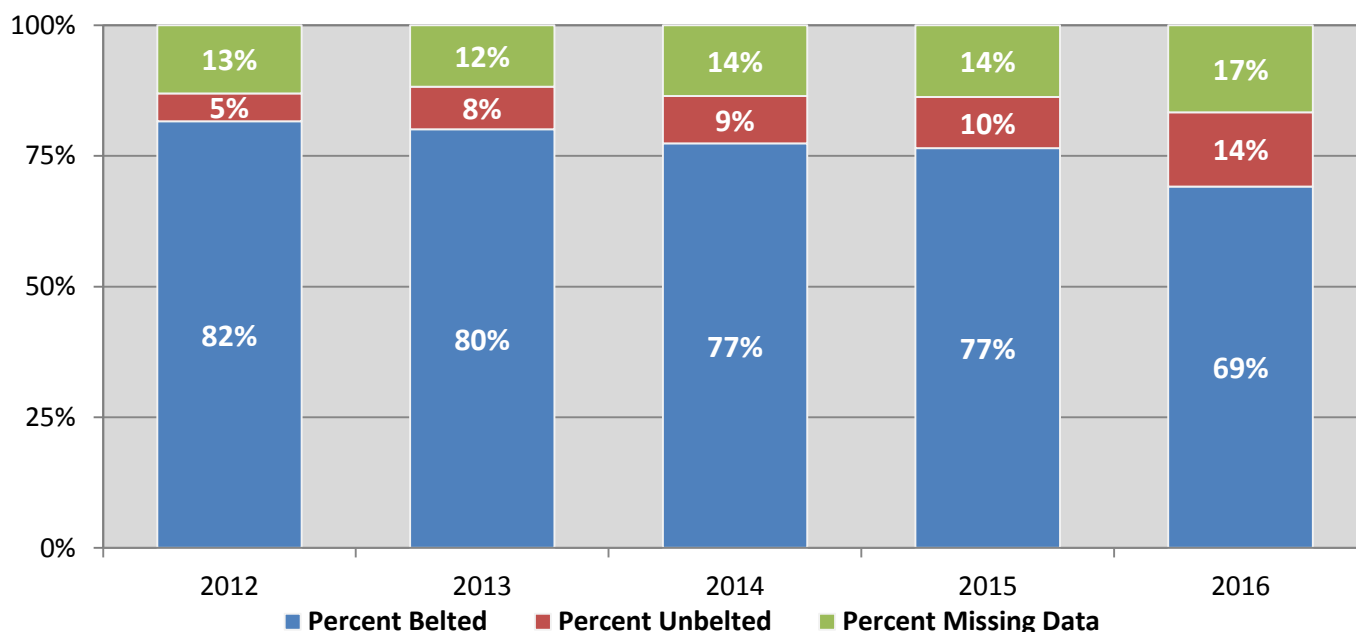
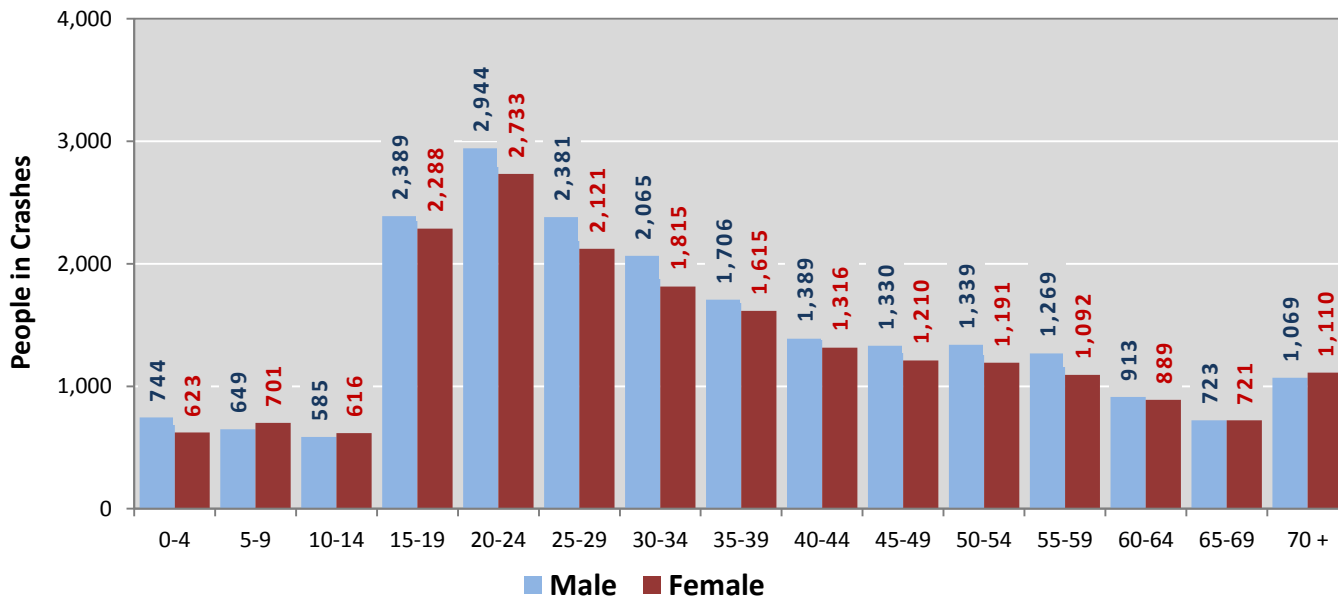
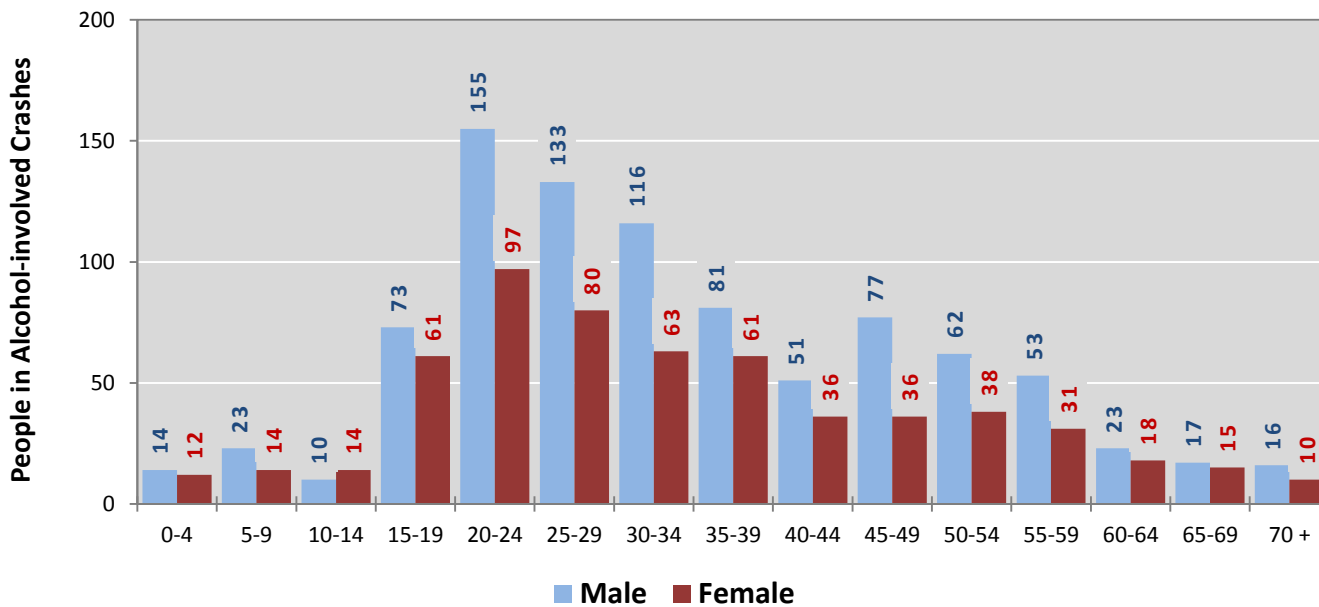


Figure 9: People in Crashes by Age Group and Sex in Albuquerque, 2016



* In 2016, Albuquerque had 8404 people in crashes for which age or sex data were missing.

Figure 10: People in Alcohol-involved Crashes by Age Group and Sex in Albuquerque, 2016



* In 2016, Albuquerque had 172 people in alcohol-involved crashes for which age or sex data were missing.

Table 18: Pedestrians and Pedalcyclists in Crashes by Age Group in Albuquerque, 2012-2016

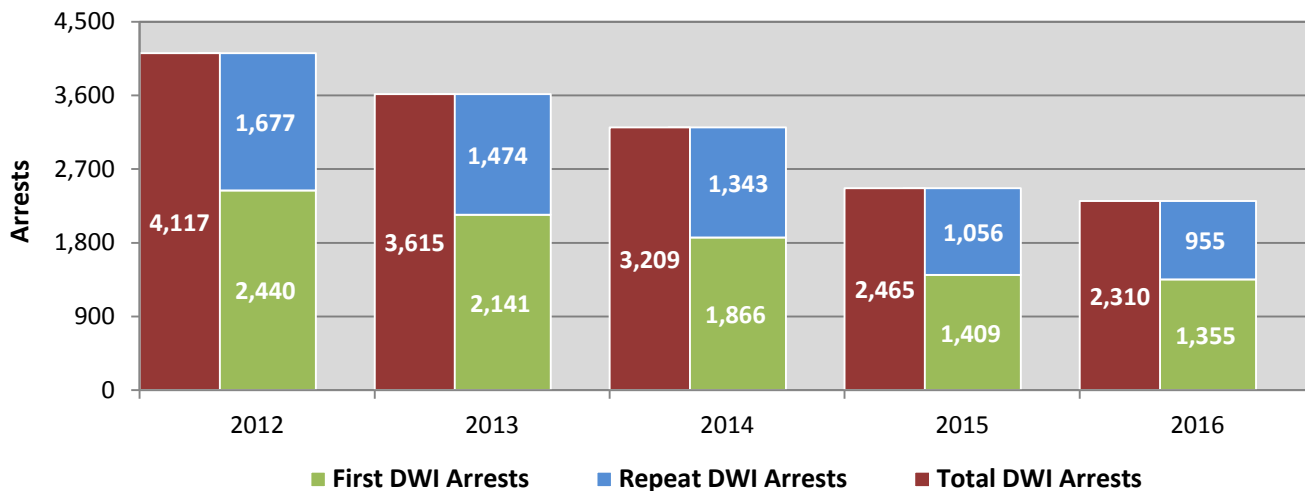
Age Groups	Pedestrians and Pedalcyclists ¹ in Crashes					5-Year Total People
	2012	2013	2014	2015	2016	
0-4	8	5	4	4	5	26
5-9	10	8	9	12	13	52
10-14	19	19	29	37	24	128
15-19	40	47	45	36	46	214
20-24	49	40	46	51	53	239
25-29	35	42	45	63	53	238
30-34	35	31	34	35	43	178
35-39	24	29	21	32	36	142
40-44	32	27	37	43	42	181
45-49	44	26	34	26	38	168
50-54	37	25	32	37	45	176
55-59	30	23	38	42	33	166
60-64	25	17	30	20	30	122
65-69	7	7	16	16	17	63
70 +	14	14	14	24	17	83
Missing Data	20	42	43	34	33	172
Total People	429	402	477	512	528	2,348

Table 19: Pedestrians and Pedalcyclists in Crashes by Alcohol Involvement and Severity of Injuries in Albuquerque, 2016

Alcohol Involvement	Pedestrians and Pedalcyclists ¹ in Crashes					Total People
	Fatalities (Class K)	Suspected Serious Injuries (Class A)	Suspected Minor Injuries (Class B)	Possible Injuries (Class C)	No Apparent Injury (Class O)	
Total Pedalcyclists	1	16	85	64	28	194
Involved	1	0	3	1	0	5
Not Involved	0	16	82	63	28	189
Total Pedestrians	33	54	110	113	24	334
Involved	20	14	21	16	2	73
Not Involved	13	40	89	97	22	261
Total People	34	70	195	177	52	528

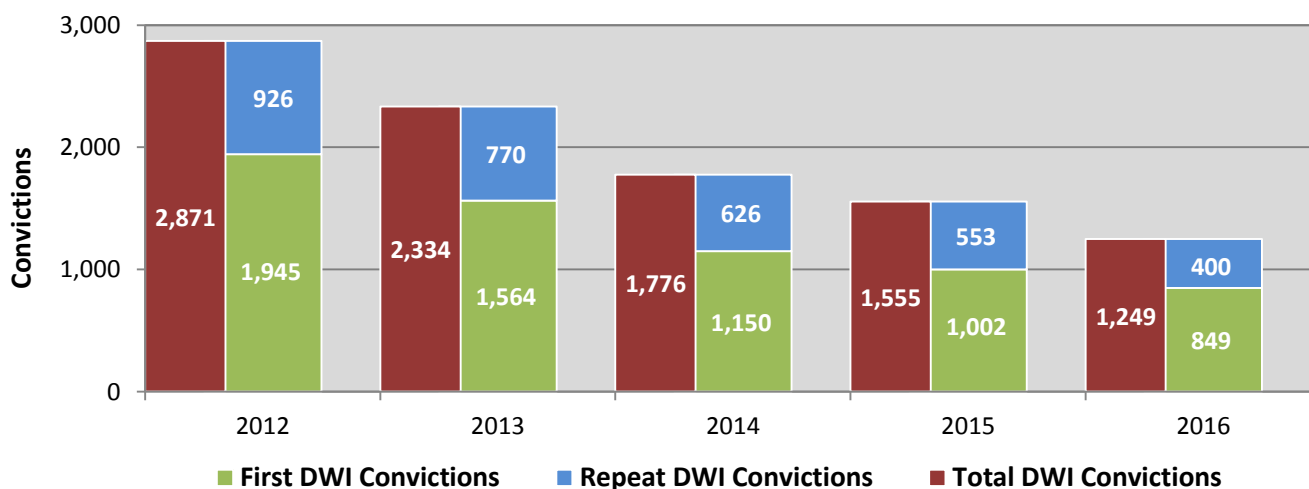
¹ Pedestrians and pedalcyclists are counted as non-motorized vehicles, when involved in a crash with a motor vehicle.

Figure 11: DWI Arrests of Albuquerque Residents Throughout the State, Showing First and Repeat DWI Arrests, 2012-2016



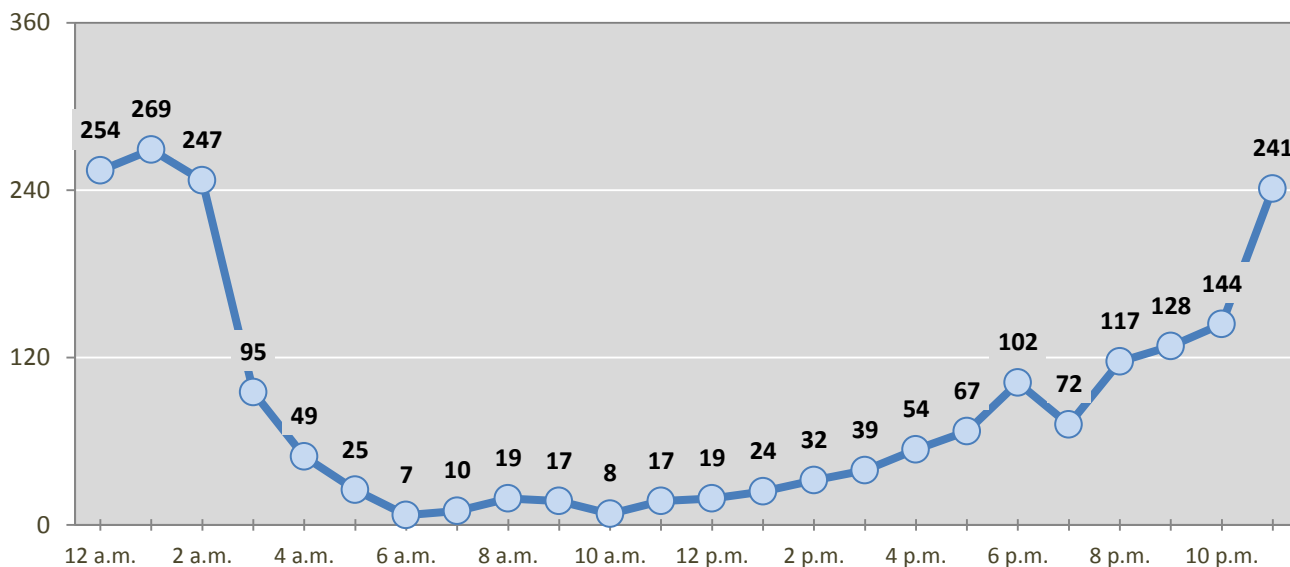
*Values are based upon the year of the arrest.

Figure 12: DWI Convictions of Albuquerque Residents Throughout the State, Showing First and Repeat DWI Convictions, 2012-2016



*Values are based upon the year of the conviction.

Figure 13: DWI Arrests by Hour of Albuquerque Residents Throughout the State, 2016



* In 2016, Albuquerque had 254 arrests for which hour data were missing.

Table 20: DWI Arrests by Day of Week of Albuquerque Residents Throughout the State, 2012-2016

Day of Week	Year					5-Year Average
	2012	2013	2014	2015	2016	
Sunday	807	702	590	473	406	596
Monday	253	214	212	142	183	201
Tuesday	270	246	244	175	149	217
Wednesday	422	326	279	270	236	307
Thursday	560	509	416	341	295	424
Friday	793	713	658	480	499	629
Saturday	1,012	905	810	584	542	771
Total Arrests	4,117	3,615	3,209	2,465	2,310	3,143

Table 21: Driver First DWI Arrests by Age Group of Albuquerque Residents Throughout the State, 2012-2016

Age Groups	Driver First DWI Arrests ¹				
	2012	2013	2014	2015	2016
15-19	187	112	115	88	86
20-24	747	661	549	420	414
25-29	480	455	384	299	290
30-34	339	289	255	195	183
35-39	201	199	162	111	117
40-44	153	132	128	66	73
45-49	113	108	88	86	63
50-54	94	75	73	41	46
55-59	55	50	50	39	35
60-64	31	26	23	19	10
65-69	22	16	13	13	11
70 +	11	10	7	3	2
Missing Data	7	8	19	29	25
Total Drivers	2,440	2,141	1,866	1,409	1,355

¹ Values are based upon the year of the arrest.

Table 22: Driver Repeat DWI Arrests by Age Group of Albuquerque Residents Throughout the State, 2012-2016

Age Groups	Driver Repeat DWI Arrests ¹				
	2012	2013	2014	2015	2016
15-19	11	13	5	4	3
20-24	167	167	123	104	69
25-29	317	269	237	198	148
30-34	278	284	239	188	194
35-39	234	173	190	142	148
40-44	209	185	144	130	102
45-49	188	124	126	91	99
50-54	133	134	129	93	88
55-59	75	53	78	54	66
60-64	35	40	36	30	15
65-69	15	14	10	12	13
70 +	7	9	9	5	8
Missing Data	8	9	17	5	2
Total Drivers	1,677	1,474	1,343	1,056	955

¹ Values are based upon the year of the arrest.

Table 23: Driver First DWI Convictions by Age Group of Albuquerque Residents Throughout the State, 2012-2016

Age Groups	Driver First DWI Convictions ¹				
	2012	2013	2014	2015	2016
15-19	109	71	39	52	39
20-24	599	450	369	300	249
25-29	404	336	261	215	180
30-34	282	224	162	149	116
35-39	165	135	96	95	83
40-44	114	124	70	57	47
45-49	98	80	48	51	45
50-54	71	62	44	29	26
55-59	49	34	27	22	25
60-64	22	26	14	13	14
65-69	17	15	10	4	10
70 +	9	4	4	3	2
Missing Data	6	3	6	12	13
Total Drivers	1,945	1,564	1,150	1,002	849

¹ Values are based upon the year of the conviction.

Table 24: Driver Repeat DWI Convictions by Age Group of Albuquerque Residents Throughout the State, 2012-2016

Age Groups	Driver Repeat DWI Convictions ¹				
	2012	2013	2014	2015	2016
15-19	4	5	3	0	2
20-24	94	65	43	40	27
25-29	160	147	111	97	68
30-34	140	112	124	94	83
35-39	142	110	86	68	53
40-44	113	110	71	75	38
45-49	145	85	51	60	49
50-54	61	60	81	58	33
55-59	31	39	33	35	31
60-64	18	21	15	11	10
65-69	7	7	3	5	2
70 +	5	3	3	3	3
Missing Data	6	6	2	7	1
Total Drivers	926	770	626	553	400

¹ Values are based upon the year of the conviction.

**Table 25: Court Disposition of DWI Arrests for the State
and of Albuquerque Residents Throughout the State, 2016**

Court Disposition of DWI Arrest ¹	Albuquerque	Statewide	Percent of Statewide
Total DWI Arrests	2,310	10,344	22.3%
DWI Arrests Resulting in Convictions	1,061	5,541	19.1%
DWI Arrests Resulting in Dismissals ²	597	1,512	39.5%
DWI Arrests Awaiting Disposition	652	3,291	19.8%

¹ These are the number of DWI arrests in 2016 and whether the case resulted in a conviction or dismissal, or is still awaiting court disposition, as reported in the NM MVD Citation Tracking System (CTS) as of December 2017.

² For this table, a very small number of "not guilty" rulings may be included in the category Dismissals.

**Table 26: Average Number of Days from Date of DWI Arrest to Date of Court Disposition
for the State and of Albuquerque Residents Throughout the State, 2016**

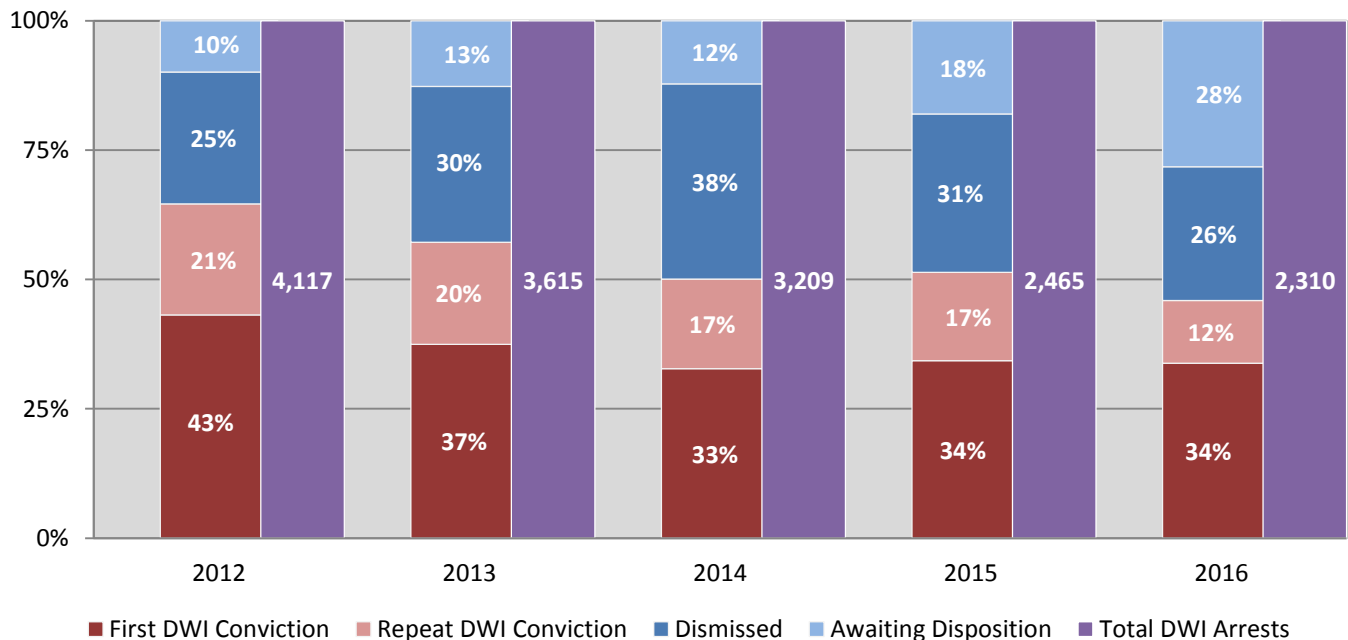
Court Disposition	Average Number of Days		Deviation from Statewide Average
	Albuquerque	Statewide	
DWI Conviction	197	157	40
DWI Dismissal	183	179	4

Table 27: Court Disposition of DWI Arrests of Albuquerque Residents Throughout the State, 2012-2016

Year of DWI Arrest ¹	Court Disposition				Total DWI Arrests
	First DWI Conviction	Repeat DWI Conviction	Dismissed	Awaiting Disposition	
2012	1,775	884	1,049	409	4,117
2013	1,354	713	1,089	459	3,615
2014	1,051	555	1,211	392	3,209
2015	846	420	754	445	2,465
2016	781	280	597	652	2,310

¹ Values are based upon the year of the arrest.

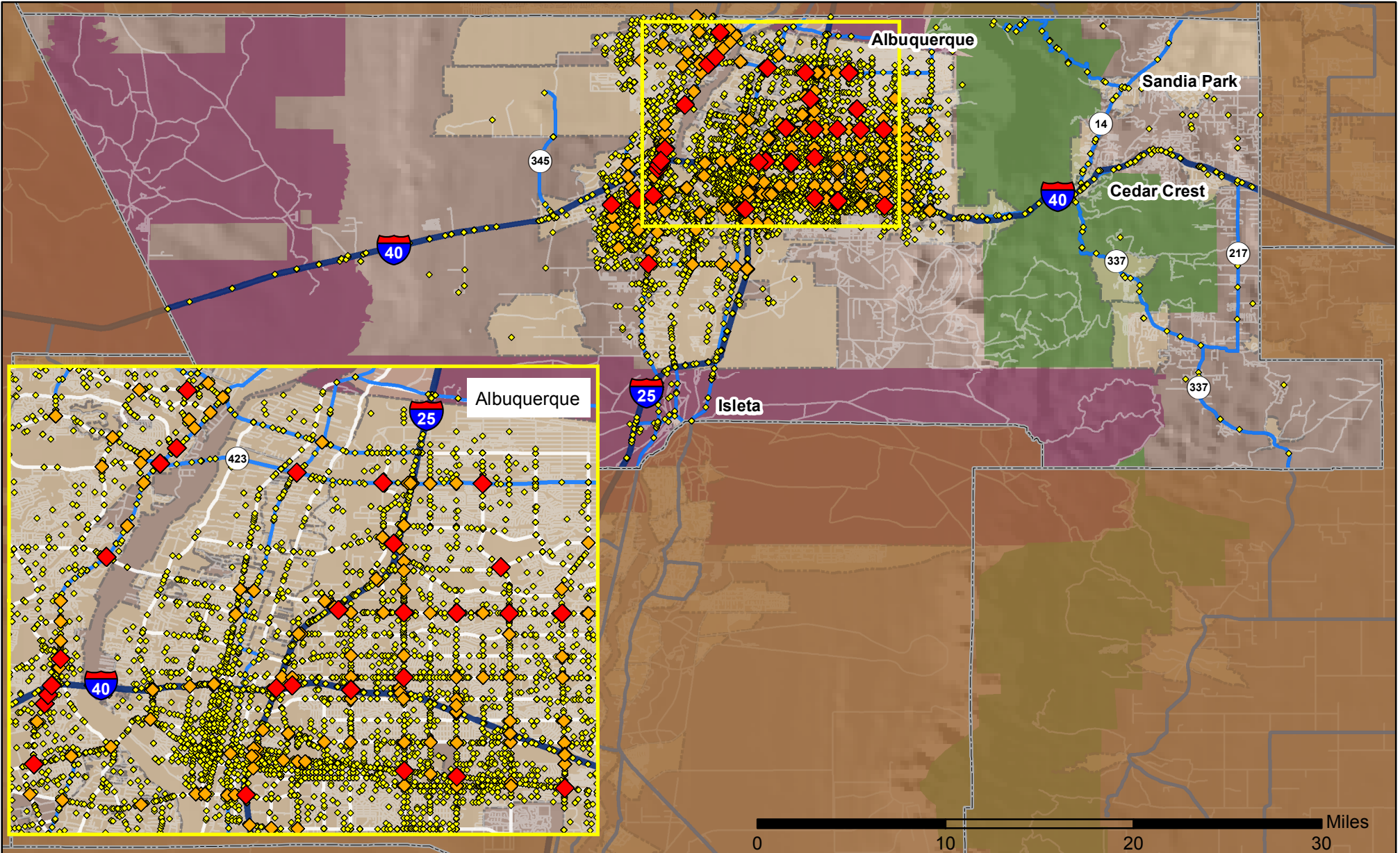
Figure 14: Court Dispositions by Percentage of DWI Arrests of Albuquerque Residents Throughout the State, 2012-2016



*Table 27 contains the values used to calculate percentages shown in Figure 14.

Crashes in Bernalillo County, New Mexico, 2016

Map created by the Traffic Research Unit, Geospatial & Population Studies at UNM



Legend

Data Source: NMDOT Crash File 2016
<http://tru.unm.edu> CO#5801 tru@unm.edu

- Forest & Wildlife Areas
- Reservations & Pueblos
- County Boundaries
- City Boundaries

- Interstate Highways
- U.S. Highways
- State Highways
- Streets & Roadways

- Crashes 2016**
- 1 - 20 Crashes
 - 21 - 50 Crashes
 - 51 - 158 Crashes

