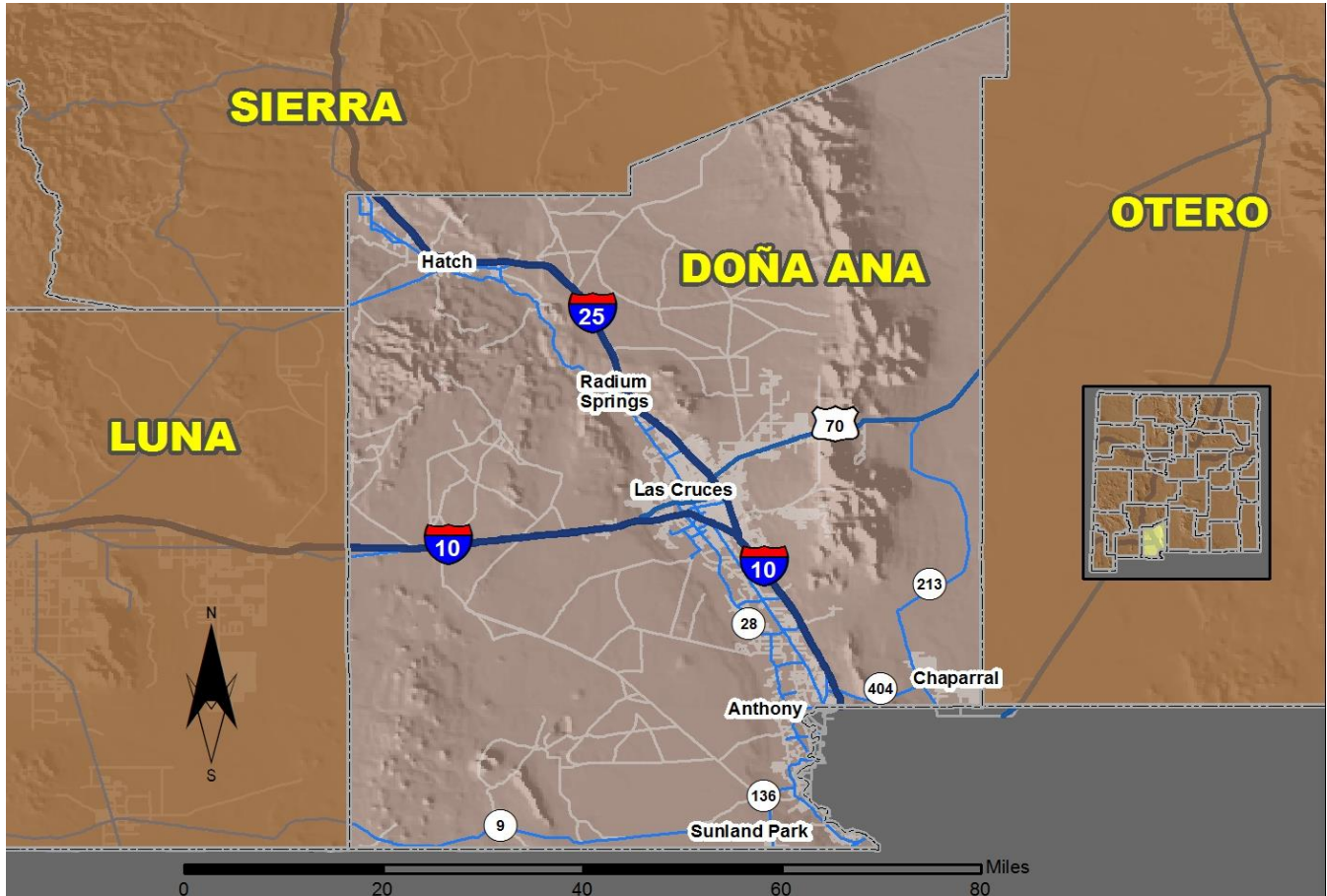


2016 Community Report

Las Cruces



Produced for the New Mexico Department of Transportation,
Traffic Safety Division, Traffic Records Bureau,
Under Contract 5801 by the University of New Mexico,
Geospatial and Population Studies, Traffic Research Unit

Distributed in compliance with New Mexico Statute 66-7-214
as a reference source regarding New Mexico traffic crashes

For the purposes of this report, data are compiled by the University of New Mexico, Geospatial and Population Studies, Traffic Research Unit (TRU), on behalf of the New Mexico Department of Transportation (NMDOT). Data in this report may differ from that in other data sources, such as the Federal Fatality Analysis Reporting System (FARS), due to the timing of publications and rules for how data are compiled and maintained in Federal vs. State databases. If you have questions regarding this report, please contact the Traffic Safety Division at 505-827-0427.

<http://tru.unm.edu/Crash-Reports/Community-Reports/>

Definitions

Aggravated DWI – A driver arrested for 1) driving with a BAC of 0.16 or higher, 2) driving under the influence of alcohol or drugs and causing bodily injury to a human being as a result, or 3) driving under the influence of alcohol or drugs and refusing to submit to a BAC test at the time of arrest for DWI.

Alcohol-involved Crash – A crash for which the Uniform Crash Report indicated that 1) a DWI citation was issued, 2) alcohol was a contributing factor, or 3) a person in control of a vehicle (including a pedestrian or pedalcyclist) was suspected of being under the influence of alcohol.

Alcohol-involved Driver – A person in control of a vehicle who was cited for DWI or indicated on the Uniform Crash Report as being either suspected or determined by testing to be under the influence of alcohol. There can be multiple alcohol-involved drivers in a single alcohol-involved crash.

Crash – A reported incident on a public roadway involving one or more motor vehicles that resulted in death, personal injury, or at least \$500 in property damage. Crashes on private property (such as a parking lot) are not included.

DWI Arrest (Citation) – In this report, a DWI arrest (a.k.a. a DWI citation) is a driver arrested for either DWI or aggravated DWI. New Mexico’s legal limit for presumption of driving while intoxicated (DWI) is 0.08 for non-commercial drivers older than 21 years of age, 0.04 for commercial vehicle drivers, and 0.02 for drivers younger than 21 years of age.

DWI Conviction – A driver convicted of driving under the intoxicating influence of alcohol, narcotics, or pathogenic drugs, including aggravated DWI.

Fatal Crash – A crash in which at least one person was killed. More than one person can be killed in a single fatal crash.

Fatalities – The number of people killed in a crash. The terms “killed” and “deaths” are synonymous with “fatalities.” A fatality is crash-related if it occurs at the time of the crash or if the person(s) involved in the crash dies within 30 days.

Injury Crash – A reported crash in which at least one person was injured. Injury crashes involve at least one suspected serious injury (Class A), suspected minor injury (Class B), or possible injury (Class C). Fatal crashes are not included.

Missing Data – An indication that the applicable field on the UCR form was left blank or contained an invalid code. Starting with crashes that occurred in 2012, improvements in the identification of missing data in the NMDOT crash database led to an increase in the reported amount of missing data.

Pedalcyclist – A person riding a mechanism of transport that is powered solely by pedals (a.k.a. bicyclist).

Pedestrian – A person on foot, walking, running, jogging, hiking, sitting or lying down who is involved in a motor vehicle traffic crash.

Sources

Crash Data – New Mexico Department of Transportation, Traffic Safety Division, Traffic Records Bureau, Traffic Crash Database, as of the report date below. Crash data are compiled using NMDOT Uniform Crash Reports (UCR), submitted by law enforcement agencies in the state, for any incident on a public roadway involving one or more motor vehicles that resulted in death, injury, or at least \$500 in property damage. These reports are processed by the NMDOT Traffic Records Bureau and analyzed by the University of New Mexico, Geospatial and Population Studies, Traffic Research Unit (TRU).

DWI Citation Tracking System (CTS) – New Mexico Taxation and Revenue Department (NM TRD), Motor Vehicle Division (MVD), DWI Citation Tracking System (CTS), as of December 2017. Repeat offenders are identified by the combination of account key, arrest date, and citation number. County data are based upon the county where the arrest took place. City data are based upon the city where the offender resides.

Urban Areas – New Mexico Department of Transportation, Asset Management and Planning, 2010 U.S. Census Urbanized Area Boundaries, NMDOT-Adjusted, and U.S. Census Urban Clusters, August 21, 2013. In crashes before 2013, “urban” was defined as a town or city with a population of at least 2,500 people.

**Table 1: Total Crashes and Alcohol-involved Crashes by
Crash Severity in Las Cruces, 2007-2016**

Year	Total Crashes				Alcohol-involved Crashes			
	Fatal	Injury	Property Damage Only	Total	Fatal	Injury	Property Damage Only	Total
2007	7	1,113	2,340	3,460	2	55	79	136
2008	4	1,049	2,114	3,167	2	67	70	139
2009	7	989	2,204	3,200	3	73	75	151
2010	6	1,060	2,181	3,247	4	56	70	130
2011	2	1,066	2,287	3,355	1	73	77	151
2012	6	871	2,280	3,157	2	36	64	102
2013	4	963	2,244	3,211	2	57	58	117
2014	8	962	2,209	3,179	3	60	65	128
2015	8	1,046	2,504	3,558	4	43	78	125
2016	11	1,168	2,352	3,531	3	43	64	110

**Figure 1: Alcohol-involved Fatal and Injury Crashes Compared with
Non-alcohol-involved Fatal and Injury Crashes in Las Cruces, 2007-2016**

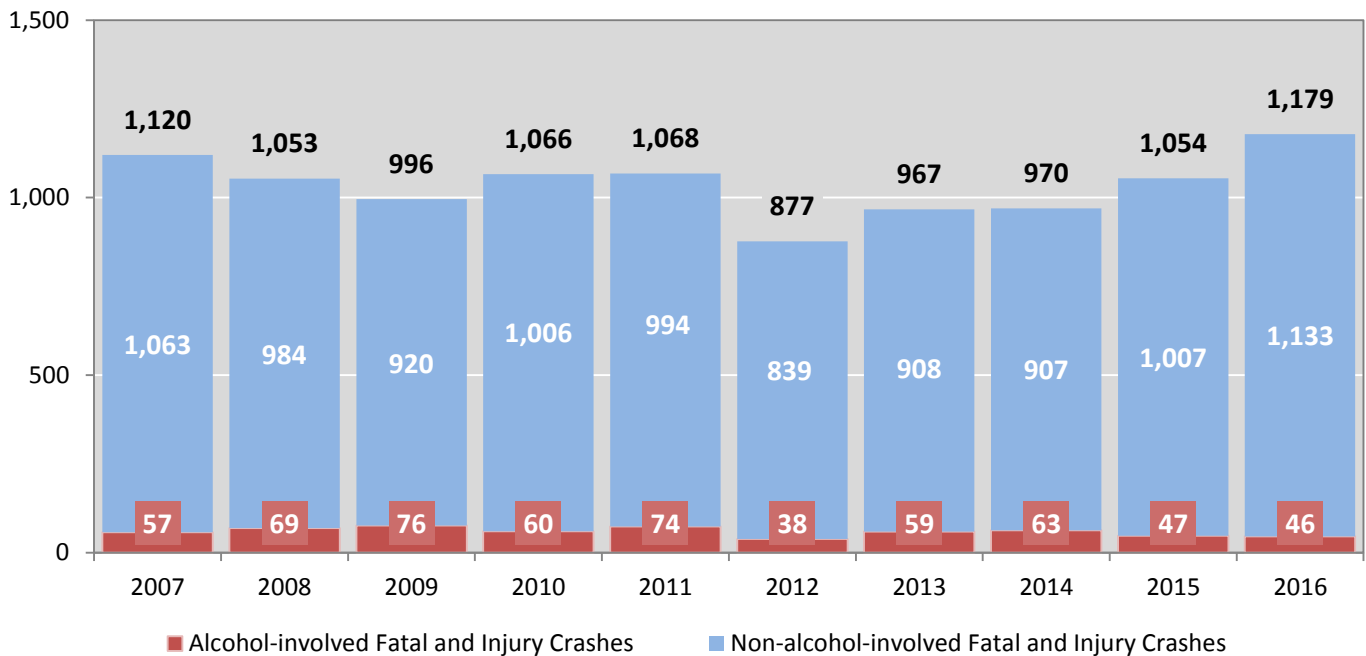


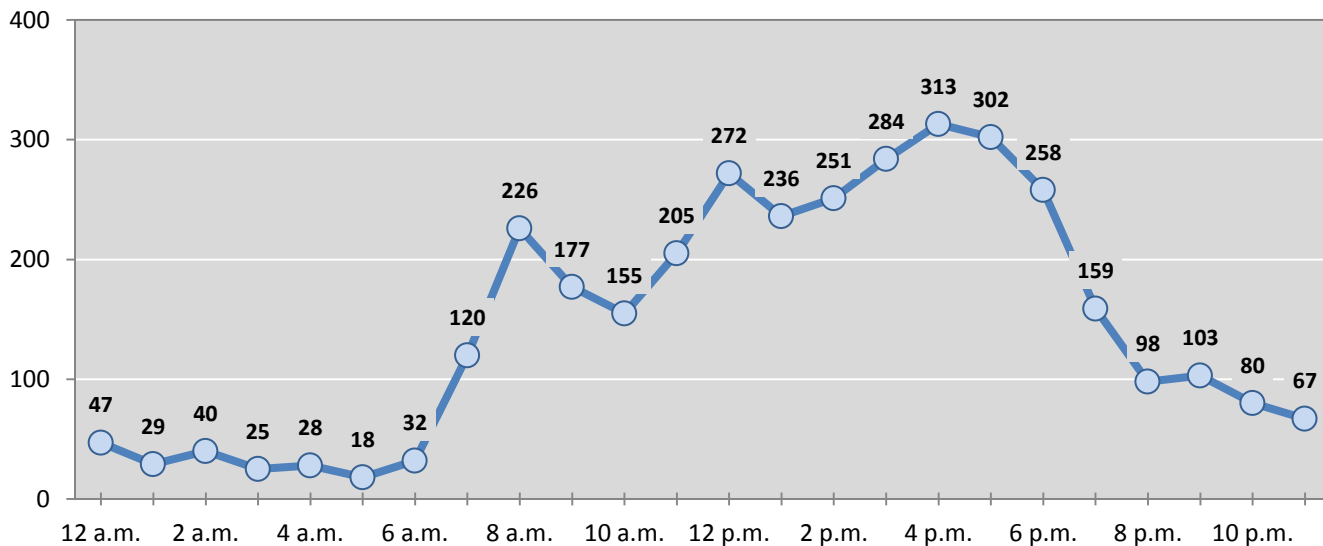
Table 2: Crashes by Month in Las Cruces, 2012-2016

Month	Crashes					5-Year Average
	2012	2013	2014	2015	2016	
January	250	252	242	283	275	260
February	221	201	236	293	278	246
March	292	300	244	267	306	282
April	294	273	277	289	321	291
May	229	264	261	289	298	268
June	225	205	274	225	226	231
July	224	237	245	272	253	246
August	245	274	283	302	327	286
September	292	331	306	307	293	306
October	344	320	304	360	331	332
November	272	298	214	312	289	277
December	269	256	293	359	334	302
Total Crashes	3,157	3,211	3,179	3,558	3,531	3,327

Table 3: Alcohol-involved Crashes by Month in Las Cruces, 2012-2016

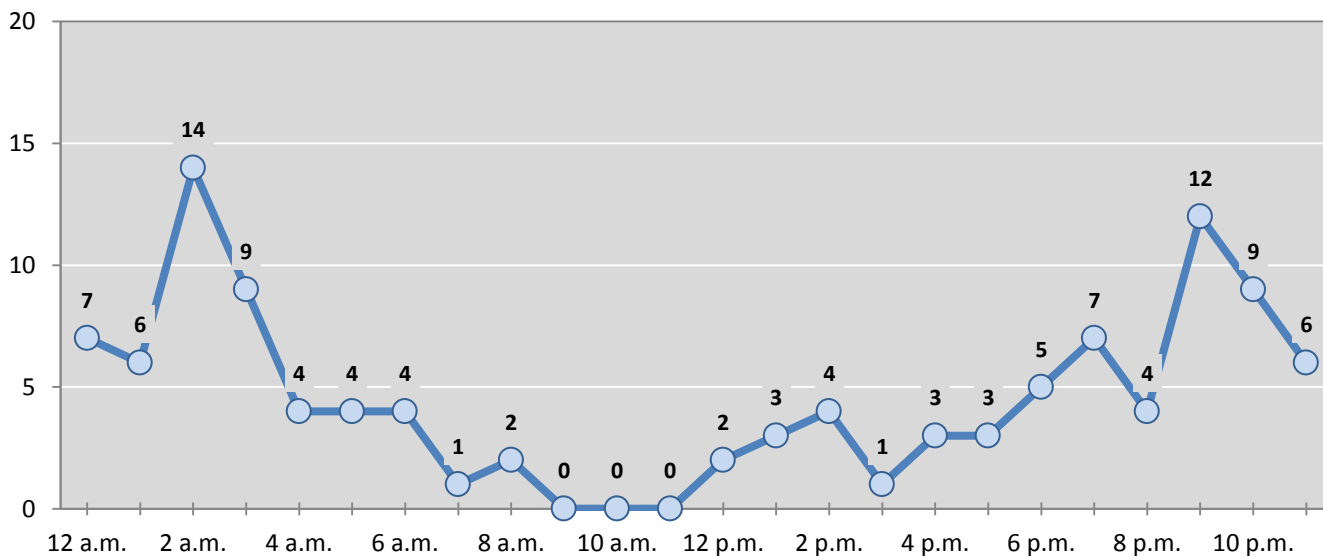
Month	Alcohol-involved Crashes					5-Year Average
	2012	2013	2014	2015	2016	
January	10	11	7	17	13	12
February	2	8	7	14	6	7
March	13	15	14	10	9	12
April	11	8	20	5	11	11
May	8	8	3	15	7	8
June	6	9	17	6	9	9
July	8	6	9	4	10	7
August	6	9	10	10	9	9
September	11	10	9	10	8	10
October	12	9	13	13	14	12
November	8	14	9	12	7	10
December	7	10	10	9	7	9
Total Crashes	102	117	128	125	110	116

Figure 2: Crashes by Hour in Las Cruces, 2016



* In 2016, Las Cruces had 6 crashes for which hour data were missing.

Figure 3: Alcohol-involved Crashes by Hour in Las Cruces, 2016



* In 2016, Las Cruces had 0 alcohol-involved crashes for which hour data were missing.

Table 4: Alcohol-involved Crashes by Day of Week in Las Cruces, 2012-2016

Day of Week	Alcohol-involved Crashes					5-Year Average
	2012	2013	2014	2015	2016	
Sunday	13	23	21	30	18	21
Monday	5	12	11	11	10	10
Tuesday	12	12	8	9	8	10
Wednesday	10	11	21	18	11	14
Thursday	11	13	15	13	11	13
Friday	18	19	21	22	24	21
Saturday	33	27	31	22	28	28
Total Crashes	102	117	128	125	110	116

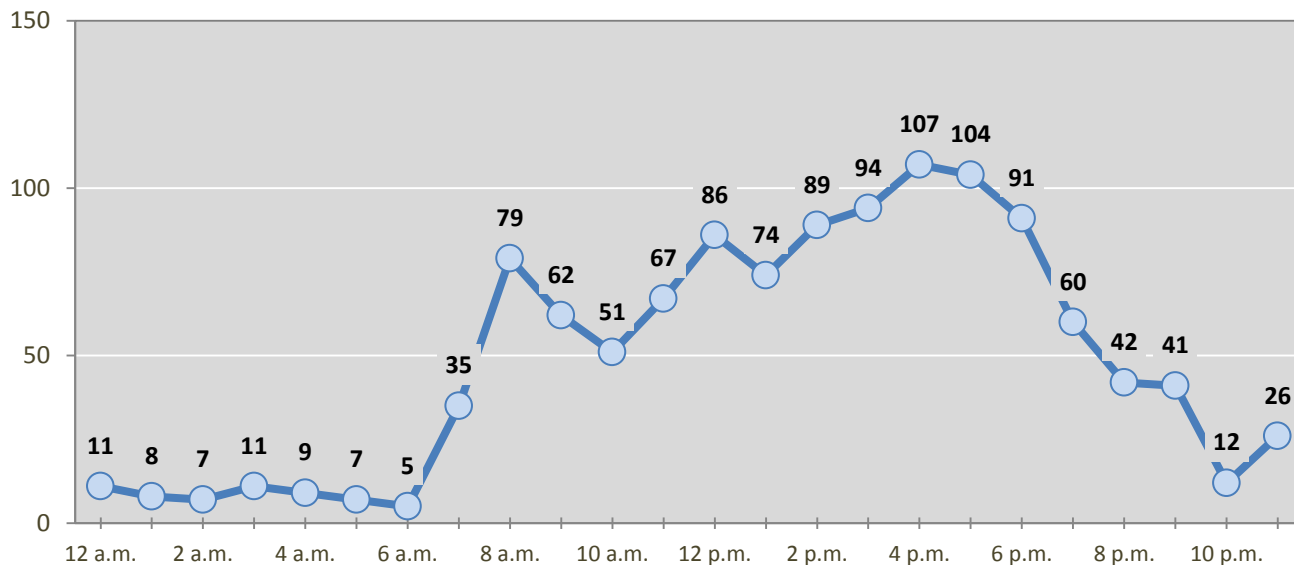
Table 5: Fatal and Injury Crashes by Day of Week in Las Cruces, 2012-2016

Day of Week	Fatal and Injury Crashes					5-Year Average
	2012	2013	2014	2015	2016	
Sunday	70	86	84	70	103	83
Monday	144	139	169	172	159	157
Tuesday	121	187	138	153	197	159
Wednesday	141	143	168	163	202	163
Thursday	140	136	143	180	190	158
Friday	161	173	167	201	193	179
Saturday	100	103	101	115	135	111
Total Crashes	877	967	970	1,054	1,179	1,009

Table 6: Pedestrian and Pedalcyclist Crashes by Day of Week in Las Cruces, 2012-2016

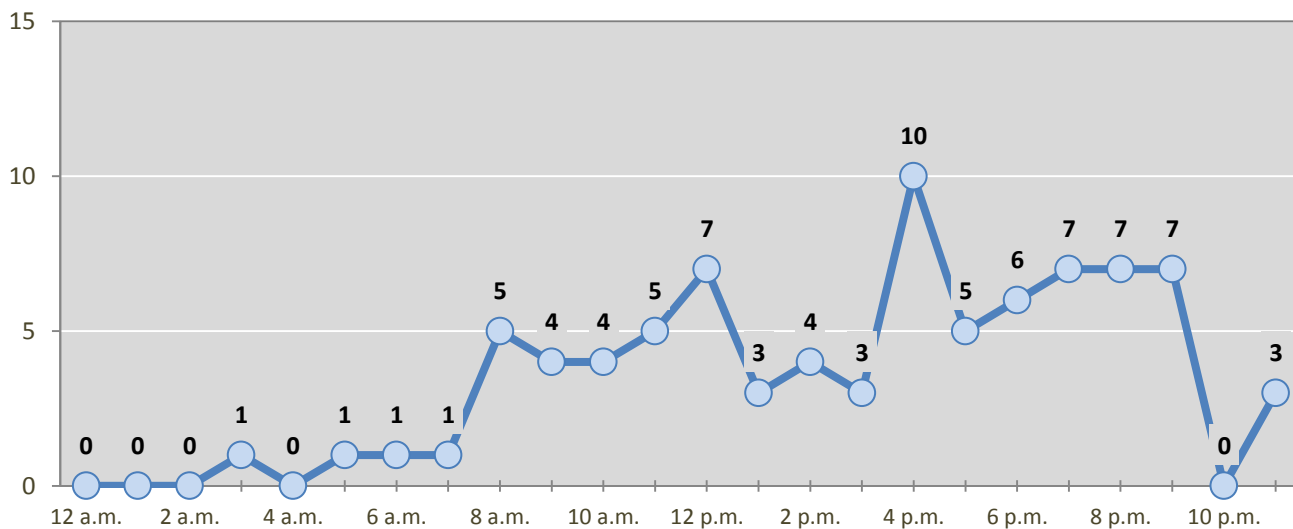
Day of Week	Pedestrian and Pedalcyclist Crashes					5-Year Average
	2012	2013	2014	2015	2016	
Sunday	2	4	7	2	8	5
Monday	8	12	12	17	9	12
Tuesday	9	12	10	17	15	13
Wednesday	7	9	14	12	19	12
Thursday	8	10	10	8	16	10
Friday	7	18	10	7	11	11
Saturday	6	7	9	10	6	8
Total Crashes	47	72	72	73	84	70

Figure 4: Fatal and Injury Crashes by Hour in Las Cruces, 2016



* In 2016, Las Cruces had 1 crashes for which hour data were missing.

Figure 5: Pedestrian and Pedalcyclist Crashes by Hour in Las Cruces, 2016



* In 2016, Las Cruces had 0 crashes for which hour data were missing.

Table 7: Severity of Injuries to People in Crashes by Rural and Urban Location in Las Cruces, 2016

Urban and Rural Locations by Alcohol-involvement	People in Crashes by Severity of Injuries					Total People
	Fatalities (Class K)	Suspected Serious Injuries (Class A)	Suspected Minor Injuries (Class B)	Possible Injuries (Class C)	No Apparent Injuries (Class O)	
People in Alcohol-involved Crashes	6	8	23	33	183	253
Urban	6	8	23	33	183	253
Rural Non-Interstate	0	0	0	0	0	0
Rural Interstate	0	0	0	0	0	0
People in Crashes	14	105	350	1,146	7,943	9,558
Urban	14	105	350	1,146	7,943	9,558
Rural Non-Interstate	0	0	0	0	0	0
Rural Interstate	0	0	0	0	0	0
Percent in Alcohol-involved Crashes	43%	8%	7%	3%	2%	3%

Table 8: Total Crashes by Roadway System and Crash Severity in Las Cruces, 2012-2016

Crash Severity by System	Crashes by Year					5-Year Average
	2012	2013	2014	2015	2016	
Total Rural Interstate	0	41	24	0	0	13
Fatal Crash	0	0	0	0	0	0
Injury Crash	0	14	7	0	0	4
Property Damage Only Crash	0	27	17	0	0	9
Total Rural Non-Interstate	0	43	48	0	0	18
Fatal Crash	0	1	0	0	0	0
Injury Crash	0	14	21	0	0	7
Property Damage Only Crash	0	28	27	0	0	11
Total Urban	3,157	3,127	3,107	3,558	3,531	3,296
Fatal Crash	6	3	8	8	11	7
Injury Crash	871	935	934	1,046	1,168	991
Property Damage Only Crash	2,280	2,189	2,165	2,504	2,352	2,298

Table 9: Total Crashes by Crash Classification in Las Cruces, 2012-2016

Crash Classification	Total Crashes by Year					5-Year Average
	2012	2013	2014	2015	2016	
Animal	8	9	6	10	14	9
Fixed Object	246	306	283	282	289	281
Other (Non-Collision)	41	25	24	19	40	30
Other (Object)	37	53	62	42	54	50
Other Vehicle	2,480	2,428	2,408	2,838	2,811	2,593
Overturn/Rollover	73	86	77	24	46	61
Parked Vehicle	165	172	178	189	144	170
Pedalcyclist	26	29	36	40	39	34
Pedestrian	21	44	41	32	45	37
Railroad Train	2	2	2	1	0	1
Rollover	0	0	3	38	15	11
Vehicle on Other Road	5	5	10	2	2	5
Missing Data	53	52	49	41	32	45
Total Crashes	3,157	3,211	3,179	3,558	3,531	3,327

Table 10: Vehicles in Crashes by Vehicle Type in Las Cruces, 2012-2016

Vehicle Type ¹	Vehicles in Crashes by Vehicle Type					5-Year Average
	2012	2013	2014	2015	2016	
Bus	23	17	12	21	16	18
Motorcycle	81	122	100	106	84	99
Passenger	3,349	3,227	3,513	4,143	4,090	3,664
Pedalcyclist	29	29	35	40	41	35
Pedestrian	18	44	39	35	47	37
Pickup	1,094	1,008	875	995	1,084	1,011
Semi	158	148	164	144	131	149
Van/SUV/4WD	948	1,011	942	1,048	1,166	1,023
Other Vehicle	42	42	22	54	14	35
Missing Data	246	374	288	354	228	298
Total Vehicles	5,988	6,022	5,990	6,940	6,901	6,368

¹ Pedestrians and pedalcyclists are counted as non-motorized vehicles, when involved in a crash with a motor vehicle. See Page 17 for data on drivers of non-motorized vehicles in crashes (i.e. pedestrians and pedalcyclists).

Table 11: Motor Vehicle Drivers in Crashes by Vehicle Type and Age Group in Las Cruces, 2016

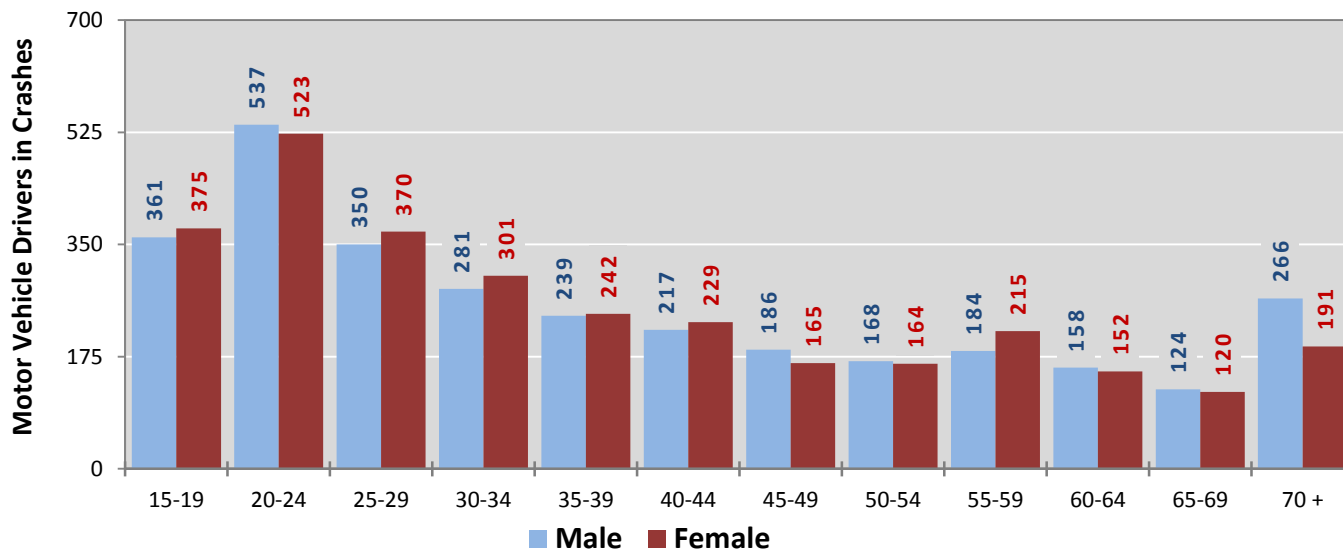
Age Groups	Motor Vehicle ¹ Drivers by Vehicle Type and Age Group								Total Drivers
	Bus	Motor-cycle	Passenger	Pickup	Semi	Van 4WD SUV	Other Vehicle	Missing Data	
15-19	0	6	555	92	5	76	1	2	737
20-24	0	20	764	132	13	128	1	2	1,060
25-29	1	7	486	104	11	102	2	8	721
30-34	0	7	346	100	12	113	1	4	583
35-39	2	11	259	66	13	125	1	4	481
40-44	2	5	242	82	15	96	2	2	446
45-49	0	7	194	73	12	65	0	2	353
50-54	5	3	175	74	10	62	1	2	332
55-59	2	5	202	79	13	96	0	2	399
60-64	3	4	164	61	8	69	1	0	310
65-69	0	4	144	42	1	50	0	3	244
70 +	0	1	272	74	4	101	4	1	457
Missing Data	1	4	287	105	14	83	0	196	690
Total Drivers	16	84	4,090	1,084	131	1,166	14	228	6,813

Table 12: Alcohol-involved Motor Vehicle Drivers in Crashes by Vehicle Type and Age Group in Las Cruces, 2016

Age Groups	Alcohol-involved Motor Vehicle ¹ Drivers by Vehicle Type and Age Group								Total Drivers
	Bus	Motor-cycle	Passenger	Pickup	Semi	Van 4WD SUV	Other Vehicle	Missing Data	
15-19	0	0	8	0	0	0	0	0	8
20-24	0	1	19	5	1	0	0	0	26
25-29	0	0	17	3	0	2	0	0	22
30-34	0	0	10	2	0	2	0	1	15
35-39	0	1	6	1	1	0	0	0	9
40-44	0	0	3	1	0	0	0	0	4
45-49	0	2	2	0	0	3	0	0	7
50-54	0	0	2	1	0	1	0	0	4
55-59	0	0	2	1	0	2	0	0	5
60-64	0	0	1	0	0	3	0	0	4
65-69	0	0	0	1	0	0	0	0	1
70 +	0	0	1	0	0	0	0	0	1
Missing Data	0	0	3	0	0	1	0	0	4
Total Drivers	0	4	74	15	2	14	0	1	110

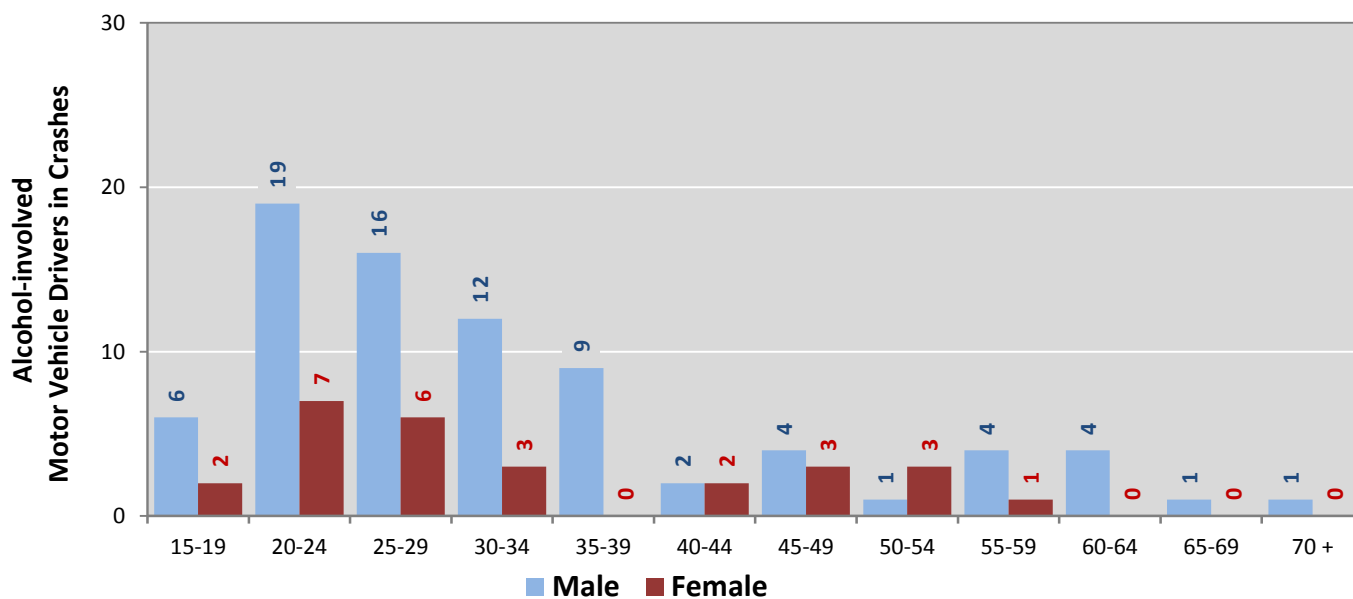
¹ See Page 17 for data on drivers of non-motorized vehicles in crashes (i.e. pedestrians and pedalcyclists).

Figure 6: Motor Vehicle Drivers in Crashes by Age Group and Sex in Las Cruces, 2016



* In 2016, Las Cruces had 695 drivers in crashes for which age or sex data were missing.

Figure 7: Alcohol-involved Motor Vehicle Drivers in Crashes by Age Group and Sex in Las Cruces, 2016



* In 2016, Las Cruces had 4 drivers in crashes for which age or sex data were missing.

**Table 13: Alcohol-involved Motor Vehicle Drivers Under 21
(Ages 15-20) in Crashes in Las Cruces, 2012-2016**

Age ¹	Year					5-Year Total
	2012	2013	2014	2015	2016	
15	0	0	0	0	0	0
16	1	0	0	2	1	4
17	0	1	0	3	1	5
18	1	1	2	1	6	11
19	9	4	6	2	0	21
20	6	9	10	3	3	31
Total Drivers	17	15	18	11	11	72

**Table 14: Motor Vehicle Drivers Under 21 (Ages 15-20) in Crashes
by Age, Sex and Alcohol-involvement in Las Cruces, 2016**

Age ¹	Total Drivers				Alcohol-involved Drivers			
	Sex		Total Drivers	Percent of Total	Sex		Total Drivers	Percent of Total
	Male	Female			Male	Female		
15	8	12	20	2%	0	0	0	0%
16	47	42	89	9%	1	0	1	9%
17	72	82	154	16%	1	0	1	9%
18	113	118	231	23%	4	2	6	55%
19	121	121	242	25%	0	0	0	0%
20	125	126	251	25%	3	0	3	27%
Total Drivers	486	501	987	100%	9	2	11	100%

¹ For analysis of drivers under age 21, when the driver age or sex are not identified on the crash report (typically hit-and-run drivers), the driver data are considered unreliable and are excluded from the analysis.

**Table 15: Frequency of Contributing Factors in Crashes
by Crash Severity in Las Cruces, 2016**

Contributing Factors	Frequency of Contributing Factor ¹ by Crash Severity			
	Frequency in Fatal Crashes	Frequency in Injury Crashes	Frequency in Property Damage Only Crashes	Frequency in All Crashes
Human	17	1,282	2,323	3,622
Driver Inattention	2	429	816	1,247
Failed to Yield Right of Way	0	239	333	572
Other Improper Driving	1	110	223	334
Following Too Closely	0	113	211	324
Made Improper Turn	0	42	96	138
Disregarded Traffic Signal	1	73	58	132
Improper Lane Change	0	19	109	128
Alcohol Involved	3	43	66	112
Excessive Speed	1	43	57	101
Avoid No Contact - Vehicle	2	36	52	90
Improper Backing	1	10	74	85
Avoid No Contact - Other	0	20	46	66
Passed Stop Sign	0	21	31	52
Drove Left Of Center	1	20	30	51
Improper Overtaking	0	9	41	50
Speed Too Fast for Conditions	1	19	27	47
Pedestrian Error	1	18	9	28
Drug Involved	2	9	11	22
Cell Phone	0	6	11	17
Driverless Moving Vehicle	0	0	9	9
Texting	0	1	4	5
Failed to Yield to Emergency Vehicle	1	0	3	4
Failed to Yield to Police Vehicle	0	0	3	3
High Speed Pursuit	0	1	2	3
Vehicle Skidded Before Brake	0	1	1	2
Vehicle	1	32	66	99
Inadequate Brakes	0	18	33	51
Other Mechanical Defect	0	10	15	25
Defective Tires	1	2	15	18
Defective Steering	0	2	3	5
Environment	0	2	1	3
Road Defect	0	2	1	3
Low Visibility Due to Smoke	0	0	0	0
Traffic Control Not Functioning	0	0	0	0
Other	8	1,172	2,129	3,309
None	7	1,092	1,932	3,031
Other - No Driver Error	1	80	197	278

¹ Multiple contributing factors may be reported for any vehicle in a crash.

Table 16: People in Crashes by Crash Classification and Severity of Injuries in Las Cruces, 2016

Crash Classification	People in Crashes by Severity of Injuries					Total People
	Fatalities (Class K)	Suspected Serious Injuries (Class A)	Suspected Minor Injuries (Class B)	Possible Injuries (Class C)	No Apparent Injuries (Class O)	
Animal	0	0	0	0	21	21
Fixed Object	1	6	45	43	296	391
Other (Non-Collision)	0	0	15	4	50	69
Other (Object)	0	0	7	3	88	98
Other Vehicle	8	79	213	1,040	6,910	8,250
Overturn/Rollover	0	4	19	15	36	74
Parked Vehicle	0	0	7	7	300	314
Pedalcyclist	0	4	20	7	62	93
Pedestrian	2	6	19	12	75	114
Railroad Train	0	0	0	0	0	0
Rollover	3	6	4	5	11	29
Vehicle on Other Road	0	0	0	1	6	7
Missing Data	0	0	1	9	88	98
Total People	14	105	350	1,146	7,943	9,558

**Table 17: Killed or Injured Unbelted People in Crashes
by Sex and Age Group in Las Cruces, 2016**

Age Groups	Unbelted People Killed or Injured ^{1,2}				Total People
	Male	Percent of Male	Female	Percent of Female	
0-4	1	5%	1	5%	2
5-9	1	5%	2	9%	3
10-14	2	11%	1	5%	3
15-19	1	5%	5	23%	6
20-24	3	16%	2	9%	5
25-29	3	16%	2	9%	5
30-34	1	5%	5	23%	6
35-39	1	5%	0	0%	1
40-44	2	11%	0	0%	2
45-49	0	0%	1	5%	1
50-54	0	0%	1	5%	1
55-59	1	5%	2	9%	3
60-64	0	0%	0	0%	0
65-69	1	5%	0	0%	1
70 +	2	11%	0	0%	2
Missing Data	0	0%	0	0%	0
Total People	19	100%	22	100%	41

¹ People injured are in one of three categories: suspected serious injury, suspected minor injury, or possible injury.

² Excludes people in or on buses, heavy trucks, motorcycles, or ATVs.

**Figure 8: Seatbelt Use by People in Crashes with Fatal or
Suspected Serious Injuries in Las Cruces, 2012-2016**

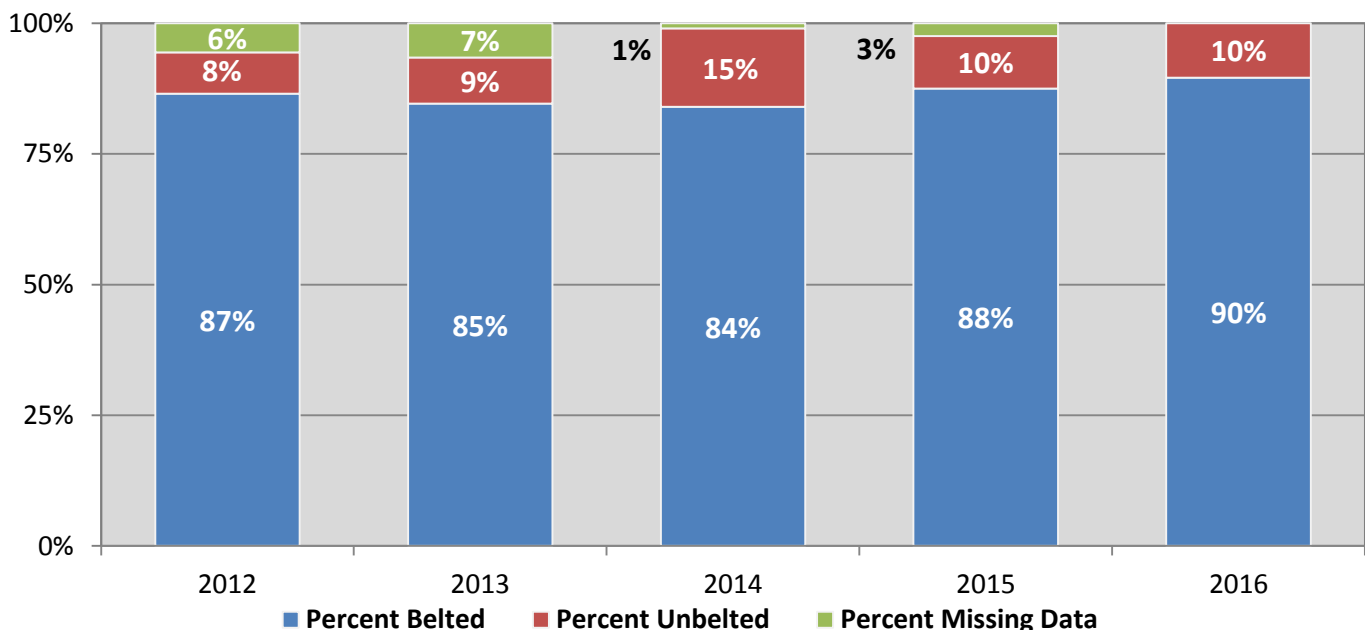
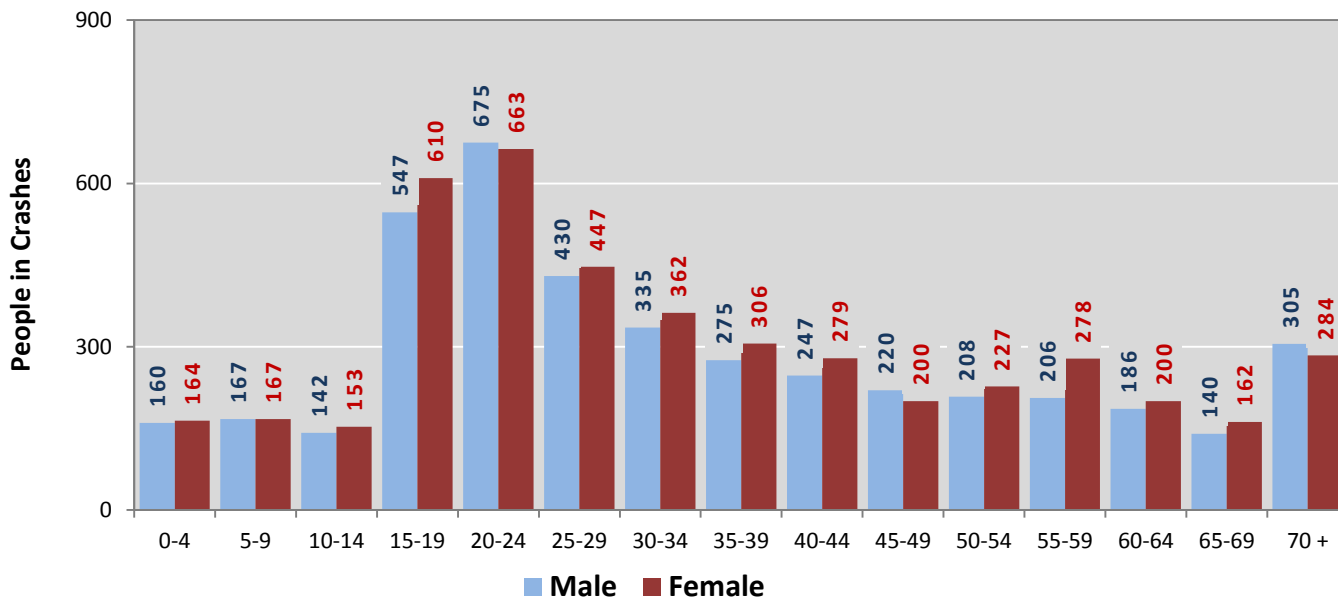
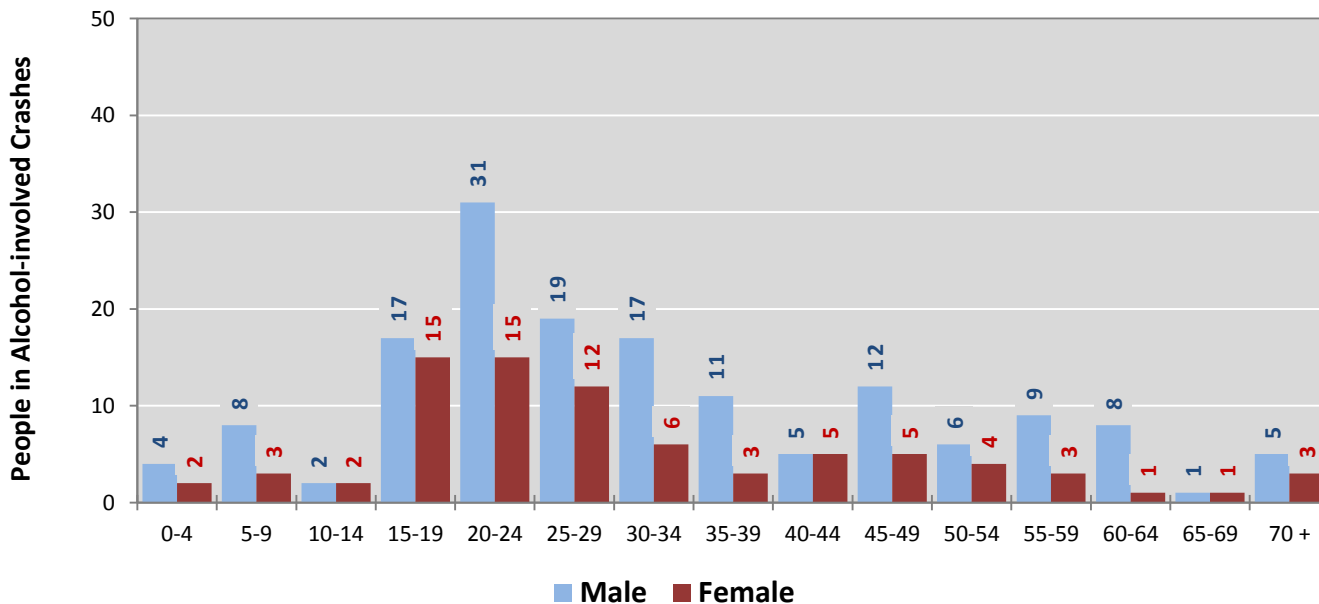


Figure 9: People in Crashes by Age Group and Sex in Las Cruces, 2016



* In 2016, Las Cruces had 813 people in crashes for which age or sex data were missing.

Figure 10: People in Alcohol-involved Crashes by Age Group and Sex in Las Cruces, 2016



* In 2016, Las Cruces had 18 people in alcohol-involved crashes for which age or sex data were missing.

**Table 18: Pedestrians and Pedalcyclists in Crashes
by Age Group in Las Cruces, 2012-2016**

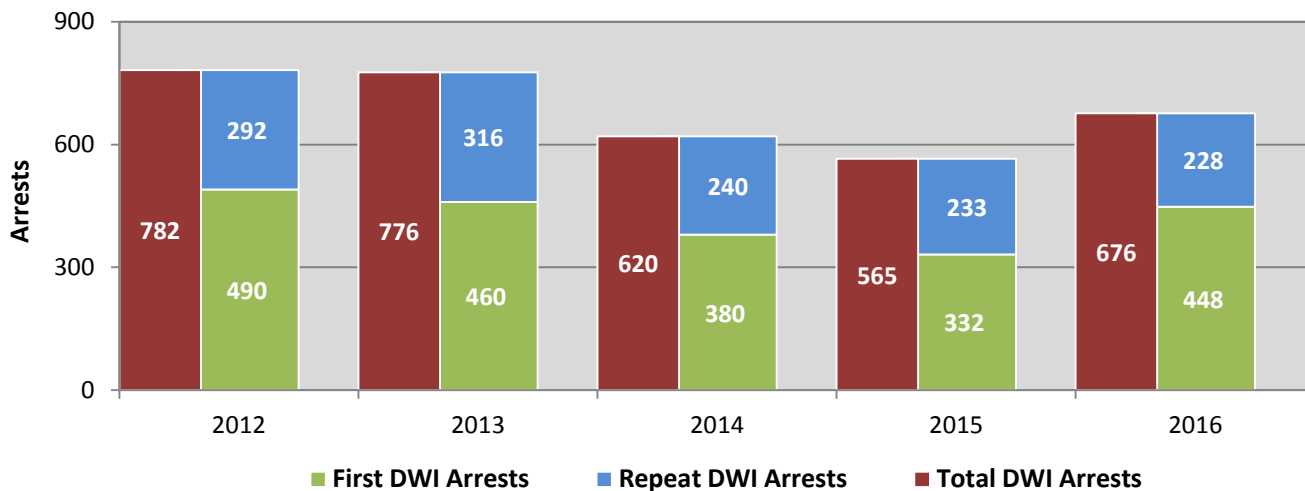
Age Groups	Pedestrians and Pedalcyclists ¹ in Crashes					5-Year Total People
	2012	2013	2014	2015	2016	
0-4	1	1	0	1	1	4
5-9	5	1	3	2	6	17
10-14	2	6	0	3	5	16
15-19	4	8	14	16	10	52
20-24	6	8	9	16	13	52
25-29	4	6	7	9	7	33
30-34	1	4	3	6	5	19
35-39	2	2	6	2	3	15
40-44	6	3	5	2	3	19
45-49	5	10	3	2	7	27
50-54	1	4	2	6	6	19
55-59	2	4	7	6	4	23
60-64	3	1	3	1	6	14
65-69	1	3	3	0	3	10
70 +	1	6	6	0	4	17
Missing Data	3	6	3	3	5	20
Total People	47	73	74	75	88	357

**Table 19: Pedestrians and Pedalcyclists in Crashes by Alcohol Involvement
and Severity of Injuries in Las Cruces, 2016**

Alcohol Involvement	Pedestrians and Pedalcyclists ¹ in Crashes					Total People
	Fatalities (Class K)	Suspected Serious Injuries (Class A)	Suspected Minor Injuries (Class B)	Possible Injuries (Class C)	No Apparent Injury (Class O)	
Total Pedalcyclists	0	4	20	6	11	41
Involved	0	0	0	1	0	1
Not Involved	0	4	20	5	11	40
Total Pedestrians	2	6	18	11	10	47
Involved	1	0	1	0	0	2
Not Involved	1	6	17	11	10	45
Total People	2	10	38	17	21	88

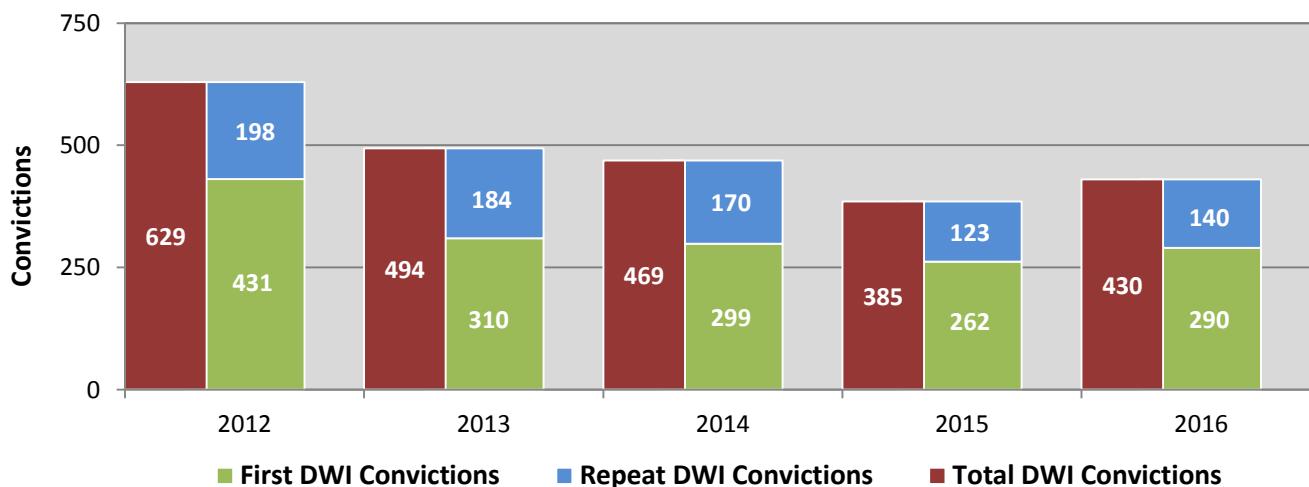
¹ Pedestrians and pedalcyclists are counted as non-motorized vehicles, when involved in a crash with a motor vehicle.

Figure 11: DWI Arrests of Las Cruces Residents Throughout the State, Showing First and Repeat DWI Arrests, 2012-2016



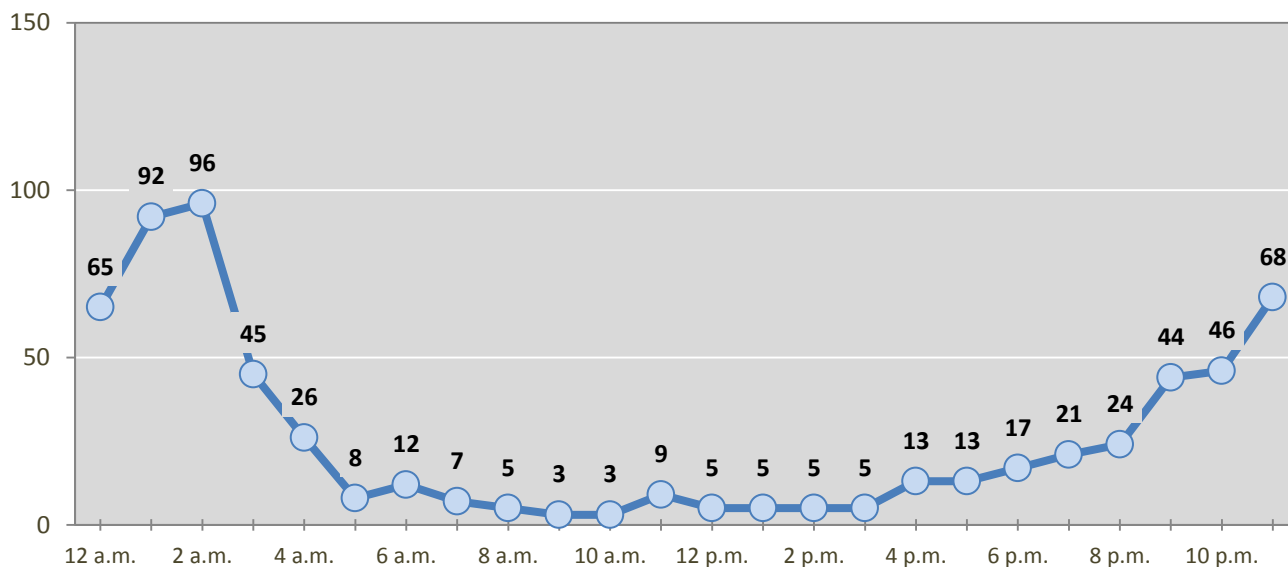
*Values are based upon the year of the arrest.

Figure 12: DWI Convictions of Las Cruces Residents Throughout the State, Showing First and Repeat DWI Convictions, 2012-2016



*Values are based upon the year of the conviction.

Figure 13: DWI Arrests by Hour of Las Cruces Residents Throughout the State, 2016



* In 2016, Las Cruces had 39 arrests for which hour data were missing.

Table 20: DWI Arrests by Day of Week of Las Cruces Residents Throughout the State, 2012-2016

Day of Week	Year					5-Year Average
	2012	2013	2014	2015	2016	
Sunday	150	164	140	124	135	143
Monday	46	66	46	54	70	56
Tuesday	60	61	60	39	57	55
Wednesday	104	101	83	72	61	84
Thursday	108	74	61	59	68	74
Friday	129	127	103	82	124	113
Saturday	185	183	127	135	161	158
Total Arrests	782	776	620	565	676	684

**Table 21: Driver First DWI Arrests by Age Group
of Las Cruces Residents Throughout the State, 2012-2016**

Age Groups	Driver First DWI Arrests ¹				
	2012	2013	2014	2015	2016
15-19	53	40	28	26	41
20-24	145	147	117	96	134
25-29	89	88	71	65	91
30-34	59	44	42	47	52
35-39	43	39	40	27	38
40-44	29	27	15	15	23
45-49	25	16	18	15	16
50-54	16	15	16	14	17
55-59	14	16	13	13	11
60-64	9	16	9	5	11
65-69	6	5	2	3	3
70 +	2	2	3	2	2
Missing Data	0	5	6	4	9
Total Drivers	490	460	380	332	448

¹ Values are based upon the year of the arrest.

**Table 22: Driver Repeat DWI Arrests by Age Group
of Las Cruces Residents Throughout the State, 2012-2016**

Age Groups	Driver Repeat DWI Arrests ¹				
	2012	2013	2014	2015	2016
15-19	0	2	2	3	0
20-24	40	34	29	24	24
25-29	62	71	49	37	38
30-34	52	46	37	38	49
35-39	38	43	29	35	37
40-44	33	37	27	24	23
45-49	28	33	15	24	24
50-54	15	21	20	22	14
55-59	16	14	15	17	13
60-64	5	5	10	7	0
65-69	2	7	4	1	3
70 +	0	2	3	1	1
Missing Data	1	1	0	0	2
Total Drivers	292	316	240	233	228

¹ Values are based upon the year of the arrest.

**Table 23: Driver First DWI Convictions by Age Group
of Las Cruces Residents Throughout the State, 2012-2016**

Age Groups	Driver First DWI Convictions ¹				
	2012	2013	2014	2015	2016
15-19	39	22	23	17	22
20-24	128	99	91	76	94
25-29	79	51	64	57	60
30-34	53	39	32	35	31
35-39	34	28	30	22	28
40-44	29	20	14	12	12
45-49	24	13	14	8	12
50-54	16	8	13	8	14
55-59	18	7	8	13	10
60-64	7	11	4	6	3
65-69	2	6	2	2	0
70 +	2	3	2	2	0
Missing Data	0	3	2	4	4
Total Drivers	431	310	299	262	290

¹Values are based upon the year of the conviction.

**Table 24: Driver Repeat DWI Convictions by Age Group
of Las Cruces Residents Throughout the State, 2012-2016**

Age Groups	Driver Repeat DWI Convictions ¹				
	2012	2013	2014	2015	2016
15-19	1	0	2	0	1
20-24	21	22	13	11	12
25-29	37	38	37	20	16
30-34	39	28	30	24	26
35-39	27	27	25	19	22
40-44	17	24	28	12	19
45-49	19	14	14	6	20
50-54	16	15	12	16	11
55-59	12	13	4	9	7
60-64	6	0	4	3	3
65-69	2	1	0	2	1
70 +	1	0	1	1	0
Missing Data	0	2	0	0	2
Total Drivers	198	184	170	123	140

¹Values are based upon the year of the conviction.

**Table 25: Court Disposition of DWI Arrests for the State
and of Las Cruces Residents Throughout the State, 2016**

Court Disposition of DWI Arrest ¹	Las Cruces	Statewide	Percent of Statewide
Total DWI Arrests	676	10,344	6.5%
DWI Arrests Resulting in Convictions	383	5,541	6.9%
DWI Arrests Resulting in Dismissals ²	26	1,512	1.7%
DWI Arrests Awaiting Disposition	267	3,291	8.1%

¹ These are the number of DWI arrests in 2016 and whether the case resulted in a conviction or dismissal, or is still awaiting court disposition, as reported in the NM MVD Citation Tracking System (CTS) as of December 2017.

² For this table, a very small number of "not guilty" rulings may be included in the category Dismissals.

**Table 26: Average Number of Days from Date of DWI Arrest to Date of Court Disposition
for the State and of Las Cruces Residents Throughout the State, 2016**

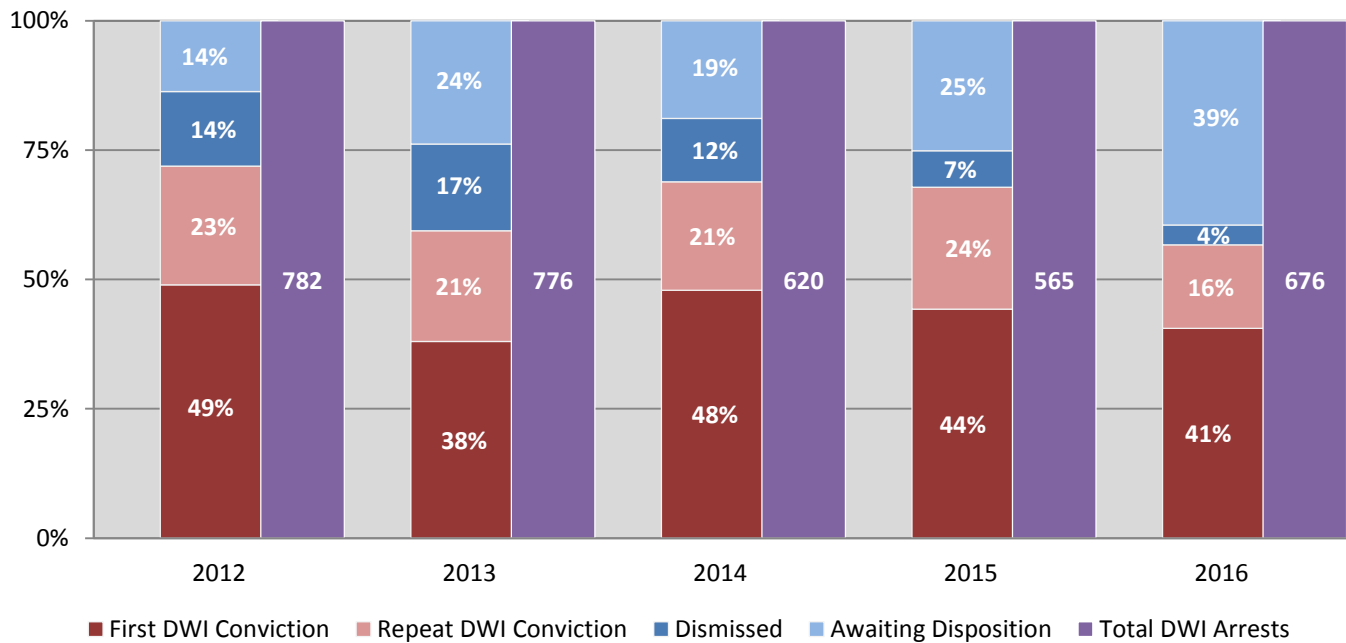
Court Disposition	Average Number of Days		Deviation from Statewide Average
	Las Cruces	Statewide	
DWI Conviction	168	157	11
DWI Dismissal	200	179	21

**Table 27: Court Disposition of DWI Arrests
of Las Cruces Residents Throughout the State, 2012-2016**

Year of DWI Arrest ¹	Court Disposition				Total DWI Arrests
	First DWI Conviction	Repeat DWI Conviction	Dismissed	Awaiting Disposition	
2012	383	179	113	107	782
2013	295	166	130	185	776
2014	297	130	76	117	620
2015	250	133	40	142	565
2016	274	109	26	267	676

¹ Values are based upon the year of the arrest.

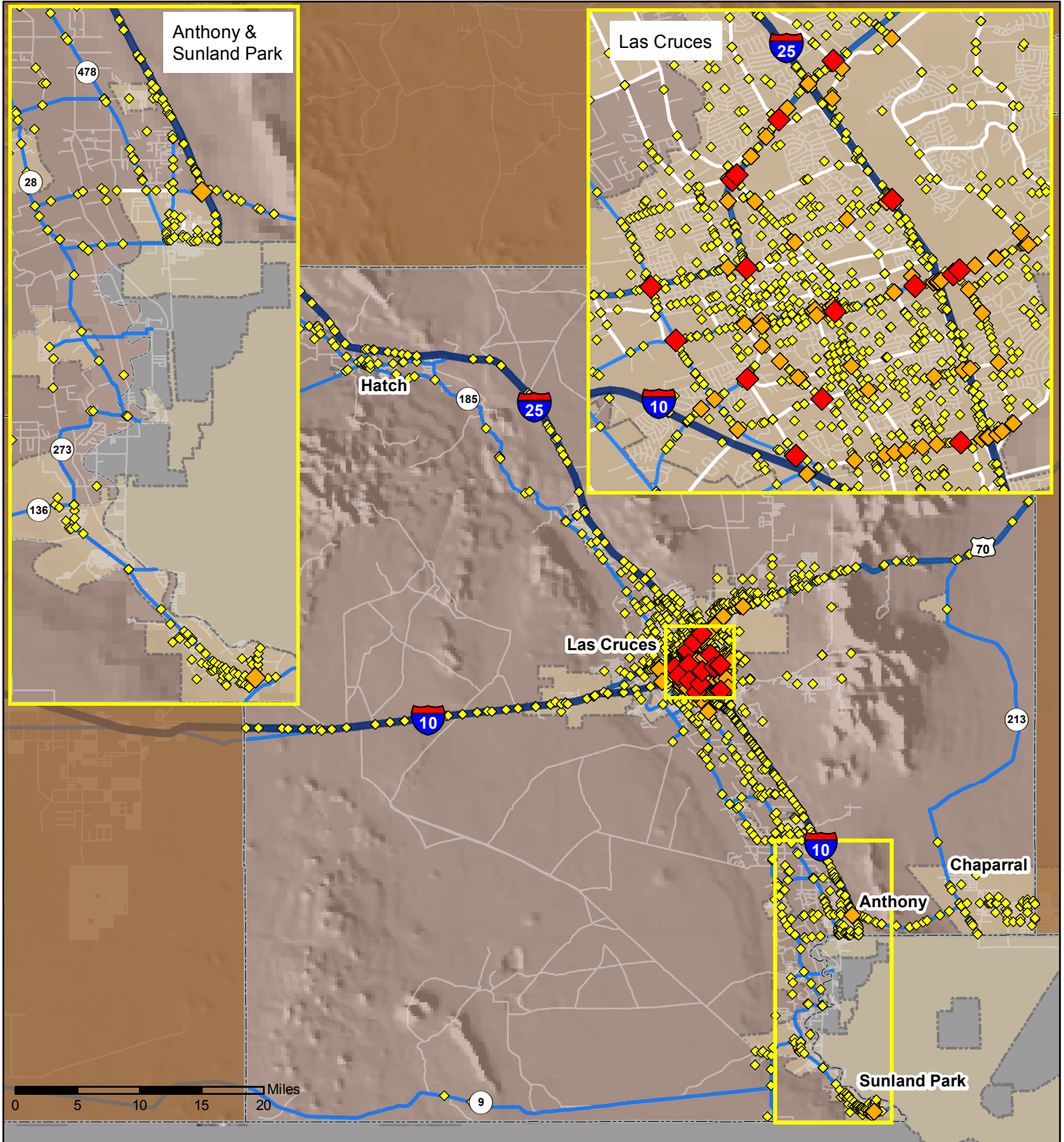
**Figure 14: Court Dispositions by Percentage of DWI Arrests
of Las Cruces Residents Throughout the State, 2012-2016**



*Table 27 contains the values used to calculate percentages shown in Figure 14.

Crashes in Doña Ana County, New Mexico, 2016

Map created by the Traffic Research Unit, Geospatial & Population Studies at UNM



Legend



- Forest & Wildlife Areas
- Reservations & Pueblos
- County Boundaries
- City Boundaries
- Interstate Highways
- U.S. Highways
- State Highways
- Streets & Roadways

Crashes 2016

- 1 - 8 Crashes
- 9 - 24 Crashes
- 25 - 52 Crashes

Data Source: NMDOT Crash File 2016
<http://tru.unm.edu> CO#5801 tru@unm.edu