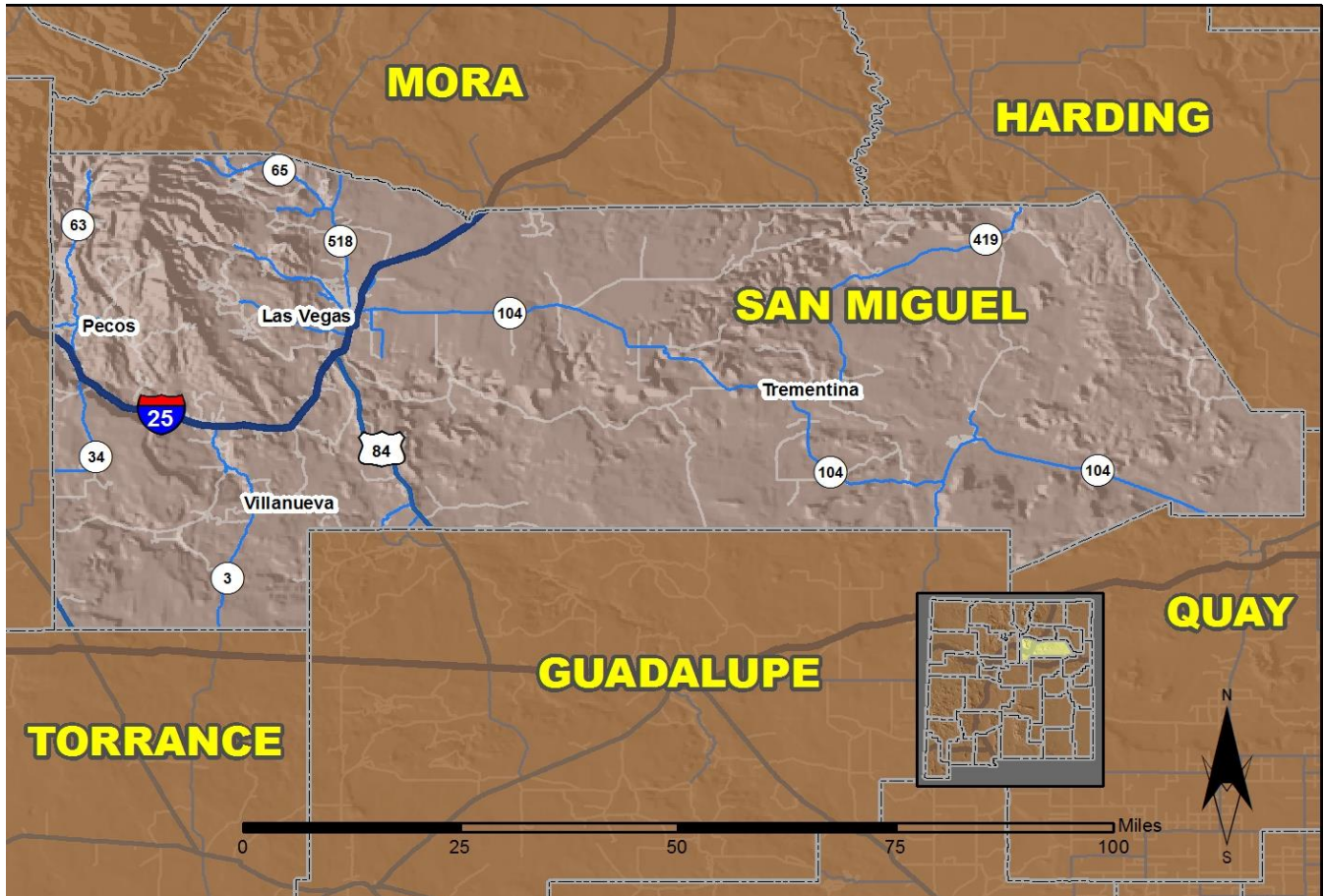


2016 Community Report

Las Vegas



Produced for the New Mexico Department of Transportation,
Traffic Safety Division, Traffic Records Bureau,
Under Contract 5801 by the University of New Mexico,
Geospatial and Population Studies, Traffic Research Unit

Distributed in compliance with New Mexico Statute 66-7-214
as a reference source regarding New Mexico traffic crashes

For the purposes of this report, data are compiled by the University of New Mexico, Geospatial and Population Studies, Traffic Research Unit (TRU), on behalf of the New Mexico Department of Transportation (NMDOT). Data in this report may differ from that in other data sources, such as the Federal Fatality Analysis Reporting System (FARS), due to the timing of publications and rules for how data are compiled and maintained in Federal vs. State databases. If you have questions regarding this report, please contact the Traffic Safety Division at 505-827-0427.

<http://tru.unm.edu/Crash-Reports/Community-Reports/>

Definitions

Aggravated DWI – A driver arrested for 1) driving with a BAC of 0.16 or higher, 2) driving under the influence of alcohol or drugs and causing bodily injury to a human being as a result, or 3) driving under the influence of alcohol or drugs and refusing to submit to a BAC test at the time of arrest for DWI.

Alcohol-involved Crash – A crash for which the Uniform Crash Report indicated that 1) a DWI citation was issued, 2) alcohol was a contributing factor, or 3) a person in control of a vehicle (including a pedestrian or pedalcyclist) was suspected of being under the influence of alcohol.

Alcohol-involved Driver – A person in control of a vehicle who was cited for DWI or indicated on the Uniform Crash Report as being either suspected or determined by testing to be under the influence of alcohol. There can be multiple alcohol-involved drivers in a single alcohol-involved crash.

Crash – A reported incident on a public roadway involving one or more motor vehicles that resulted in death, personal injury, or at least \$500 in property damage. Crashes on private property (such as a parking lot) are not included.

DWI Arrest (Citation) – In this report, a DWI arrest (a.k.a. a DWI citation) is a driver arrested for either DWI or aggravated DWI. New Mexico’s legal limit for presumption of driving while intoxicated (DWI) is 0.08 for non-commercial drivers older than 21 years of age, 0.04 for commercial vehicle drivers, and 0.02 for drivers younger than 21 years of age.

DWI Conviction – A driver convicted of driving under the intoxicating influence of alcohol, narcotics, or pathogenic drugs, including aggravated DWI.

Fatal Crash – A crash in which at least one person was killed. More than one person can be killed in a single fatal crash.

Fatalities – The number of people killed in a crash. The terms “killed” and “deaths” are synonymous with “fatalities.” A fatality is crash-related if it occurs at the time of the crash or if the person(s) involved in the crash dies within 30 days.

Injury Crash – A reported crash in which at least one person was injured. Injury crashes involve at least one suspected serious injury (Class A), suspected minor injury (Class B), or possible injury (Class C). Fatal crashes are not included.

Missing Data – An indication that the applicable field on the UCR form was left blank or contained an invalid code. Starting with crashes that occurred in 2012, improvements in the identification of missing data in the NMDOT crash database led to an increase in the reported amount of missing data.

Pedalcyclist – A person riding a mechanism of transport that is powered solely by pedals (a.k.a. bicyclist).

Pedestrian – A person on foot, walking, running, jogging, hiking, sitting or lying down who is involved in a motor vehicle traffic crash.

Sources

Crash Data – New Mexico Department of Transportation, Traffic Safety Division, Traffic Records Bureau, Traffic Crash Database, as of the report date below. Crash data are compiled using NMDOT Uniform Crash Reports (UCR), submitted by law enforcement agencies in the state, for any incident on a public roadway involving one or more motor vehicles that resulted in death, injury, or at least \$500 in property damage. These reports are processed by the NMDOT Traffic Records Bureau and analyzed by the University of New Mexico, Geospatial and Population Studies, Traffic Research Unit (TRU).

DWI Citation Tracking System (CTS) – New Mexico Taxation and Revenue Department (NM TRD), Motor Vehicle Division (MVD), DWI Citation Tracking System (CTS), as of December 2017. Repeat offenders are identified by the combination of account key, arrest date, and citation number. County data are based upon the county where the arrest took place. City data are based upon the city where the offender resides.

Urban Areas – New Mexico Department of Transportation, Asset Management and Planning, 2010 U.S. Census Urbanized Area Boundaries, NMDOT-Adjusted, and U.S. Census Urban Clusters, August 21, 2013. In crashes before 2013, “urban” was defined as a town or city with a population of at least 2,500 people.

**Table 1: Total Crashes and Alcohol-involved Crashes by
Crash Severity in Las Vegas, 2007-2016**

Year	Total Crashes				Alcohol-involved Crashes			
	Fatal	Injury	Property Damage Only	Total	Fatal	Injury	Property Damage Only	Total
2007	1	67	212	280	1	9	7	17
2008	5	70	209	284	3	11	11	25
2009	1	65	269	335	1	5	11	17
2010	2	64	239	305	1	6	13	20
2011	2	58	319	379	1	7	17	25
2012	3	53	251	307	3	4	15	22
2013	0	59	208	267	0	11	16	27
2014	1	77	246	324	1	8	9	18
2015	1	91	283	375	0	9	11	20
2016	1	87	249	337	1	5	9	15

**Figure 1: Alcohol-involved Fatal and Injury Crashes Compared with
Non-alcohol-involved Fatal and Injury Crashes in Las Vegas, 2007-2016**

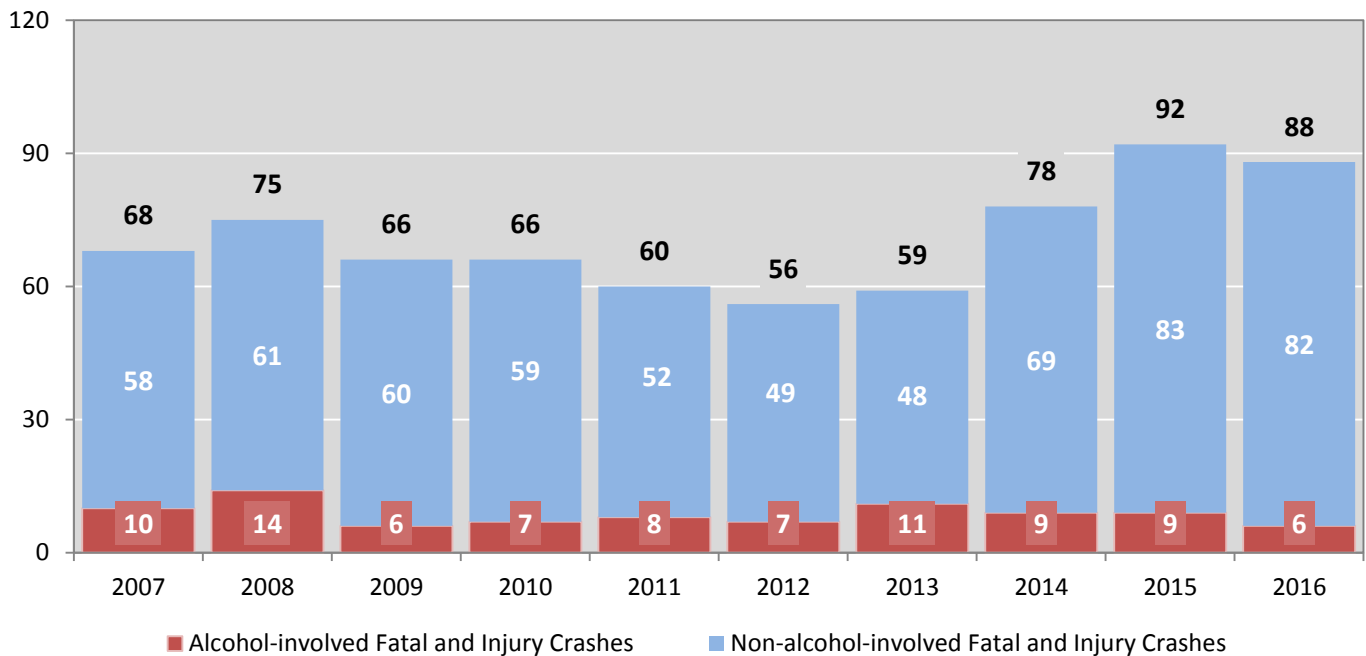


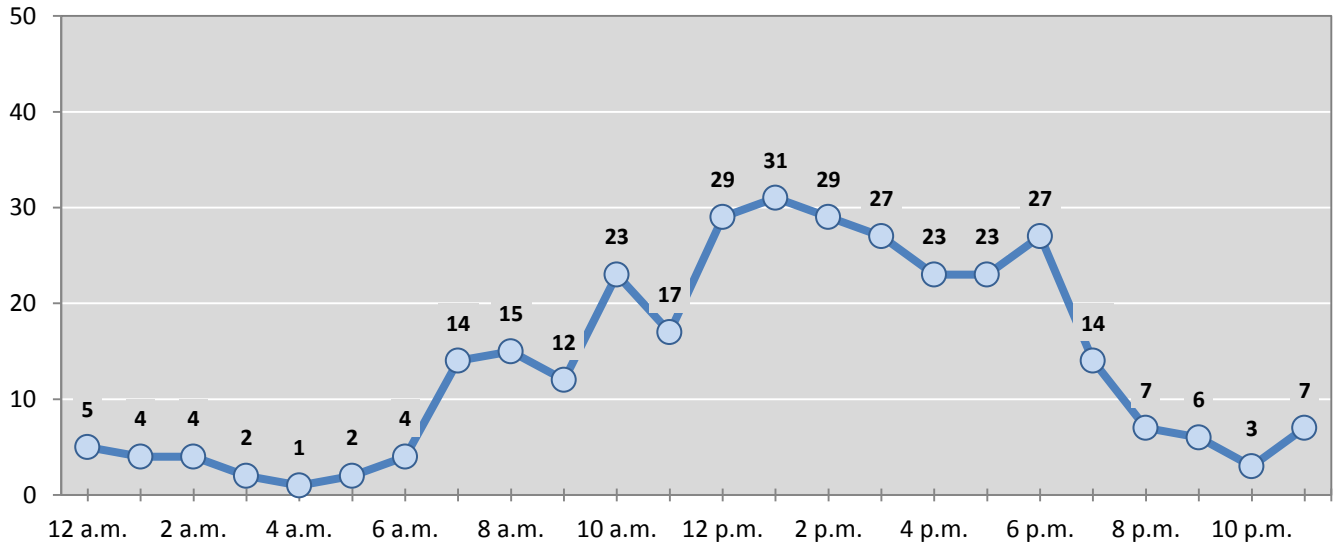
Table 2: Crashes by Month in Las Vegas, 2012-2016

Month	Crashes					5-Year Average
	2012	2013	2014	2015	2016	
January	21	22	21	36	33	27
February	15	21	20	25	30	22
March	20	19	29	38	29	27
April	36	16	28	24	21	25
May	30	27	32	24	29	28
June	31	20	26	25	23	25
July	23	26	23	30	29	26
August	21	25	15	24	27	22
September	24	32	23	45	33	31
October	34	26	33	23	33	30
November	23	13	43	41	18	28
December	29	20	31	40	32	30
Total Crashes	307	267	324	375	337	322

Table 3: Alcohol-involved Crashes by Month in Las Vegas, 2012-2016

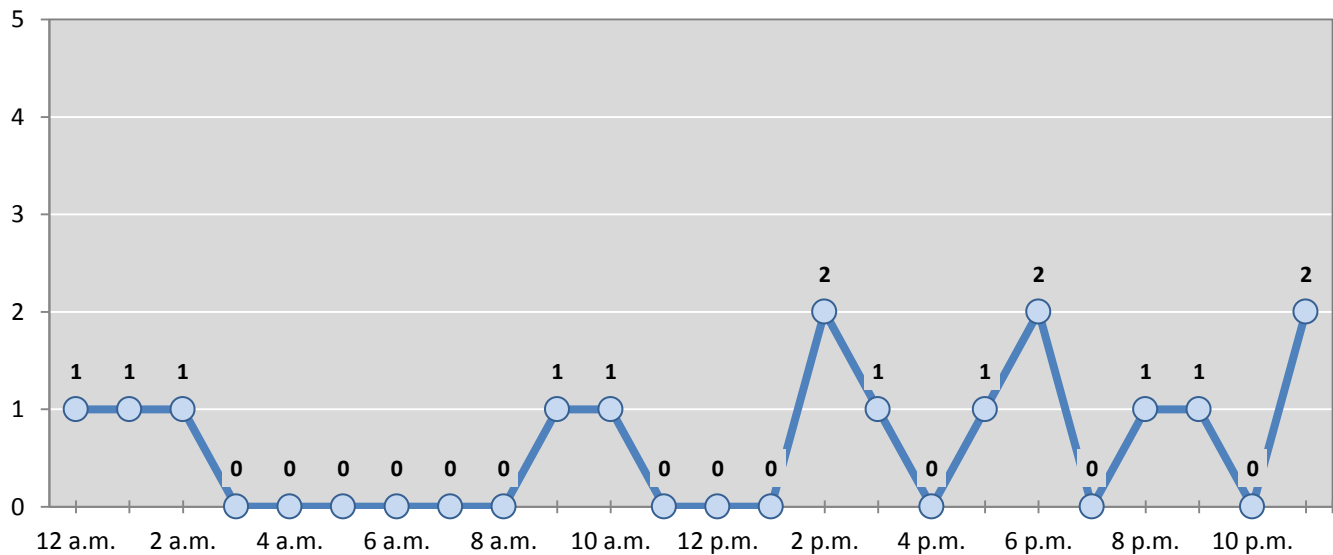
Month	Alcohol-involved Crashes					5-Year Average
	2012	2013	2014	2015	2016	
January	2	4	3	1	3	3
February	3	2	2	1	1	2
March	2	0	1	4	2	2
April	3	2	3	1	1	2
May	2	4	2	2	0	2
June	1	2	0	0	3	1
July	0	5	2	3	0	2
August	0	3	0	1	1	1
September	3	1	1	1	1	1
October	1	2	1	3	1	2
November	1	0	2	1	1	1
December	4	2	1	2	1	2
Total Crashes	22	27	18	20	15	20

Figure 2: Crashes by Hour in Las Vegas, 2016



* In 2016, Las Vegas had 8 crashes for which hour data were missing.

Figure 3: Alcohol-involved Crashes by Hour in Las Vegas, 2016



* In 2016, Las Vegas had 0 alcohol-involved crashes for which hour data were missing.

Table 4: Alcohol-involved Crashes by Day of Week in Las Vegas, 2012-2016

Day of Week	Alcohol-involved Crashes					5-Year Average
	2012	2013	2014	2015	2016	
Sunday	7	7	0	0	1	3
Monday	1	5	3	2	2	3
Tuesday	1	4	1	3	1	2
Wednesday	0	4	2	3	3	2
Thursday	1	2	4	3	3	3
Friday	12	3	2	5	3	5
Saturday	0	2	6	4	2	3
Total Crashes	22	27	18	20	15	20

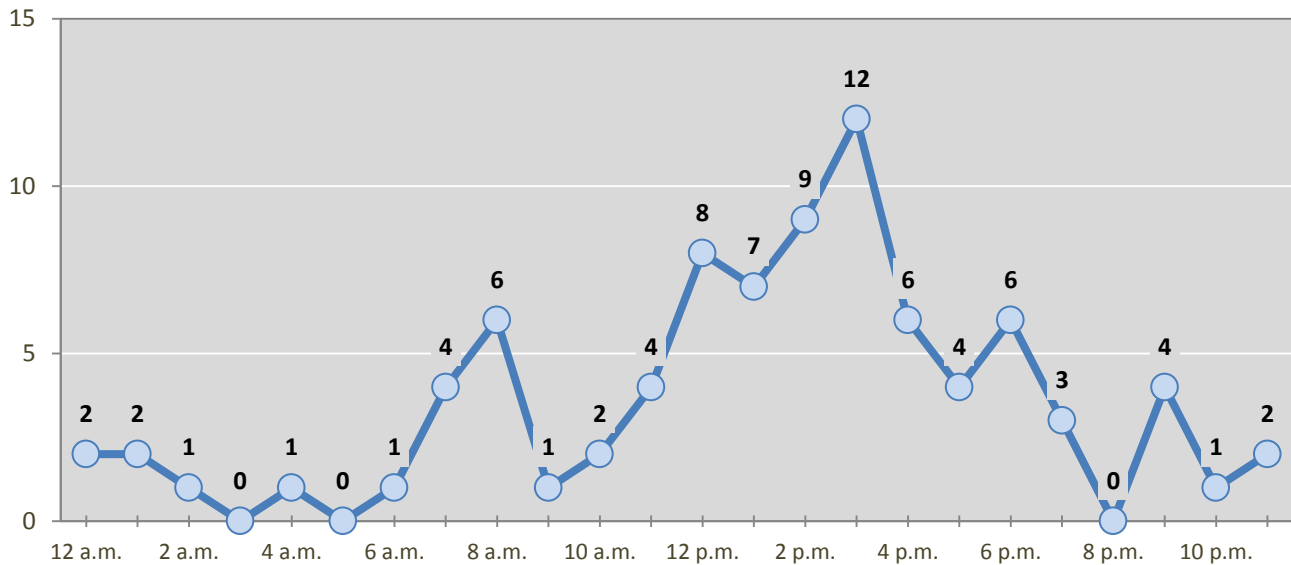
Table 5: Fatal and Injury Crashes by Day of Week in Las Vegas, 2012-2016

Day of Week	Fatal and Injury Crashes					5-Year Average
	2012	2013	2014	2015	2016	
Sunday	4	5	9	6	11	7
Monday	9	13	10	18	10	12
Tuesday	13	9	18	12	12	13
Wednesday	5	8	8	21	15	11
Thursday	9	11	7	14	12	11
Friday	12	10	16	14	16	14
Saturday	4	3	10	7	12	7
Total Crashes	56	59	78	92	88	75

Table 6: Pedestrian and Pedalcyclist Crashes by Day of Week in Las Vegas, 2012-2016

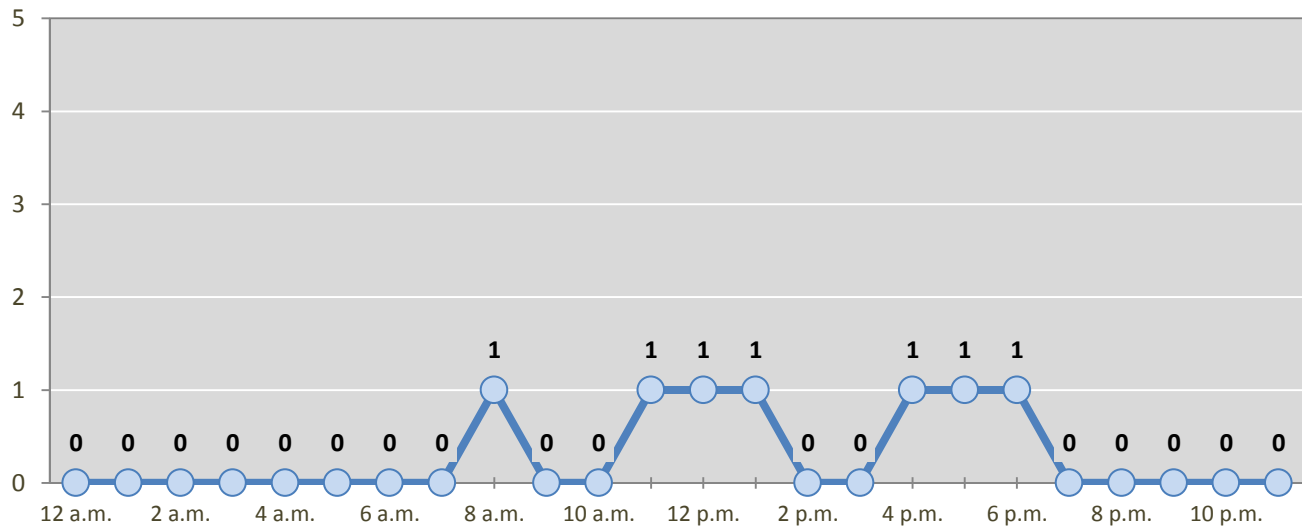
Day of Week	Pedestrian and Pedalcyclist Crashes					5-Year Average
	2012	2013	2014	2015	2016	
Sunday	0	1	1	0	1	1
Monday	2	2	0	1	0	1
Tuesday	3	1	0	1	0	1
Wednesday	1	3	2	0	2	2
Thursday	1	0	1	1	1	1
Friday	3	3	1	1	1	2
Saturday	1	0	1	0	2	1
Total Crashes	11	10	6	4	7	8

Figure 4: Fatal and Injury Crashes by Hour in Las Vegas, 2016



* In 2016, Las Vegas had 2 crashes for which hour data were missing.

Figure 5: Pedestrian and Pedalcyclist Crashes by Hour in Las Vegas, 2016



* In 2016, Las Vegas had 0 crashes for which hour data were missing.

Table 7: Severity of Injuries to People in Crashes by Rural and Urban Location in Las Vegas, 2016

Urban and Rural Locations by Alcohol-involvement	People in Crashes by Severity of Injuries					Total People
	Fatalities (Class K)	Suspected Serious Injuries (Class A)	Suspected Minor Injuries (Class B)	Possible Injuries (Class C)	No Apparent Injuries (Class O)	
People in Alcohol-involved Crashes	1	0	4	2	17	24
Urban	1	0	4	2	17	24
Rural Non-Interstate	0	0	0	0	0	0
Rural Interstate	0	0	0	0	0	0
People in Crashes	1	1	18	95	706	821
Urban	1	1	18	95	706	821
Rural Non-Interstate	0	0	0	0	0	0
Rural Interstate	0	0	0	0	0	0
Percent in Alcohol-involved Crashes	100%	0%	22%	2%	2%	3%

Table 8: Total Crashes by Roadway System and Crash Severity in Las Vegas, 2012-2016

Crash Severity by System	Crashes by Year					5-Year Average
	2012	2013	2014	2015	2016	
Total Rural Interstate	0	10	9	0	0	4
Fatal Crash	0	0	0	0	0	0
Injury Crash	0	4	7	0	0	2
Property Damage Only Crash	0	6	2	0	0	2
Total Rural Non-Interstate	0	15	18	0	0	7
Fatal Crash	0	0	1	0	0	0
Injury Crash	0	5	3	0	0	2
Property Damage Only Crash	0	10	14	0	0	5
Total Urban	307	242	297	375	337	312
Fatal Crash	3	0	0	1	1	1
Injury Crash	53	50	67	91	87	70
Property Damage Only Crash	251	192	230	283	249	241

Table 9: Total Crashes by Crash Classification in Las Vegas, 2012-2016

Crash Classification	Total Crashes by Year					5-Year Average
	2012	2013	2014	2015	2016	
Animal	3	5	9	6	5	6
Fixed Object	24	13	36	28	27	26
Other (Non-Collision)	3	2	5	2	3	3
Other (Object)	4	10	9	11	5	8
Other Vehicle	204	170	220	277	233	221
Overturn/Rollover	11	18	14	3	5	10
Parked Vehicle	36	29	15	24	20	25
Pedalcyclist	6	2	3	2	1	3
Pedestrian	7	7	3	3	6	5
Railroad Train	0	0	0	0	0	0
Rollover	0	0	0	3	2	1
Vehicle on Other Road	5	5	3	4	3	4
Missing Data	4	6	7	12	27	11
Total Crashes	307	267	324	375	337	322

Table 10: Vehicles in Crashes by Vehicle Type in Las Vegas, 2012-2016

Vehicle Type ¹	Vehicles in Crashes by Vehicle Type					5-Year Average
	2012	2013	2014	2015	2016	
Bus	1	3	6	0	2	2
Motorcycle	6	9	4	8	5	6
Passenger	282	224	258	334	305	281
Pedalcyclist	5	3	3	2	1	3
Pedestrian	7	8	3	2	7	5
Pickup	155	103	95	120	126	120
Semi	13	6	12	11	9	10
Van/SUV/4WD	73	62	97	88	110	86
Other Vehicle	10	25	29	49	8	24
Missing Data	27	53	99	103	69	70
Total Vehicles	579	496	606	717	642	608

¹ Pedestrians and pedalcyclists are counted as non-motorized vehicles, when involved in a crash with a motor vehicle. See Page 17 for data on drivers of non-motorized vehicles in crashes (i.e. pedestrians and pedalcyclists).

Table 11: Motor Vehicle Drivers in Crashes by Vehicle Type and Age Group in Las Vegas, 2016

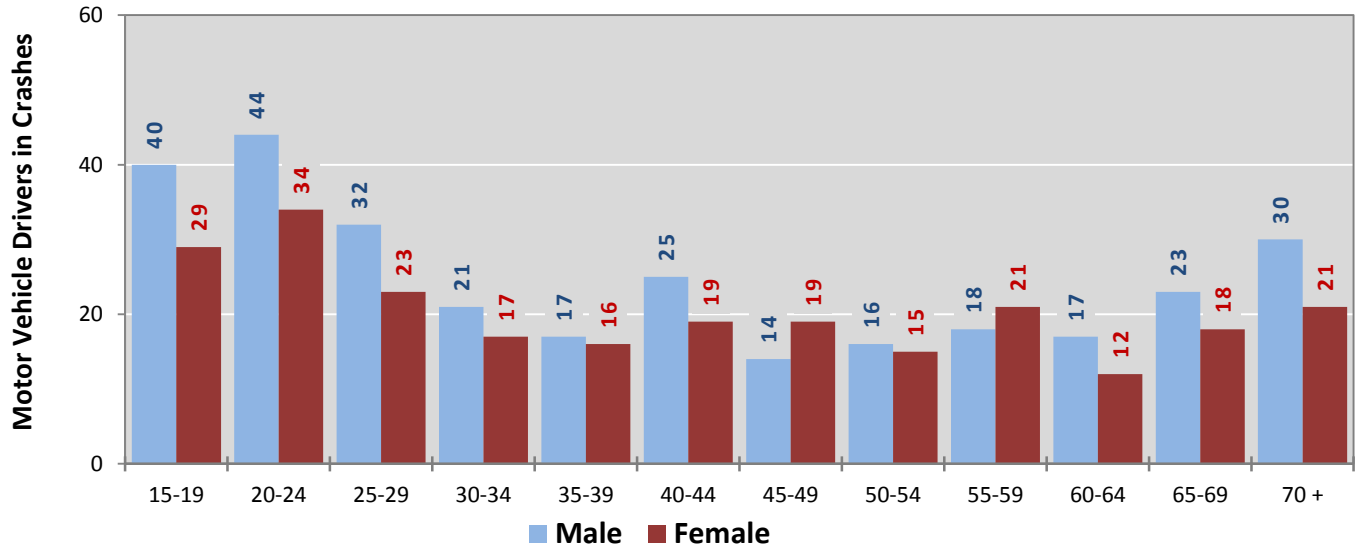
Age Groups	Motor Vehicle ¹ Drivers by Vehicle Type and Age Group								Total Drivers
	Bus	Motor-cycle	Passenger	Pickup	Semi	Van 4WD SUV	Other Vehicle	Missing Data	
15-19	0	1	33	14	0	10	5	6	69
20-24	0	0	50	11	0	9	0	8	78
25-29	0	2	30	13	0	9	0	1	55
30-34	0	1	25	5	1	6	0	0	38
35-39	0	0	12	6	0	13	0	2	33
40-44	0	1	19	12	2	9	0	2	45
45-49	1	0	16	9	0	1	1	5	33
50-54	0	0	9	9	1	10	0	2	31
55-59	0	0	17	7	4	8	0	3	39
60-64	0	0	17	5	0	5	1	1	29
65-69	1	0	17	10	0	10	0	3	41
70 +	0	0	25	12	0	8	1	5	51
Missing Data	0	0	35	13	1	12	0	31	92
Total Drivers	2	5	305	126	9	110	8	69	634

Table 12: Alcohol-involved Motor Vehicle Drivers in Crashes by Vehicle Type and Age Group in Las Vegas, 2016

Age Groups	Alcohol-involved Motor Vehicle ¹ Drivers by Vehicle Type and Age Group								Total Drivers
	Bus	Motor-cycle	Passenger	Pickup	Semi	Van 4WD SUV	Other Vehicle	Missing Data	
15-19	0	0	0	0	0	0	0	0	0
20-24	0	0	2	0	0	0	0	0	2
25-29	0	0	2	2	0	0	0	0	4
30-34	0	0	2	0	0	0	0	0	2
35-39	0	0	0	0	0	0	0	0	0
40-44	0	0	0	1	0	0	0	0	1
45-49	0	0	0	0	0	0	0	0	0
50-54	0	0	0	1	0	1	0	0	2
55-59	0	0	0	0	0	1	0	0	1
60-64	0	0	0	0	0	0	0	0	0
65-69	0	0	0	1	0	1	0	0	2
70 +	0	0	0	0	0	0	0	1	1
Missing Data	0	0	0	0	0	0	0	0	0
Total Drivers	0	0	6	5	0	3	0	1	15

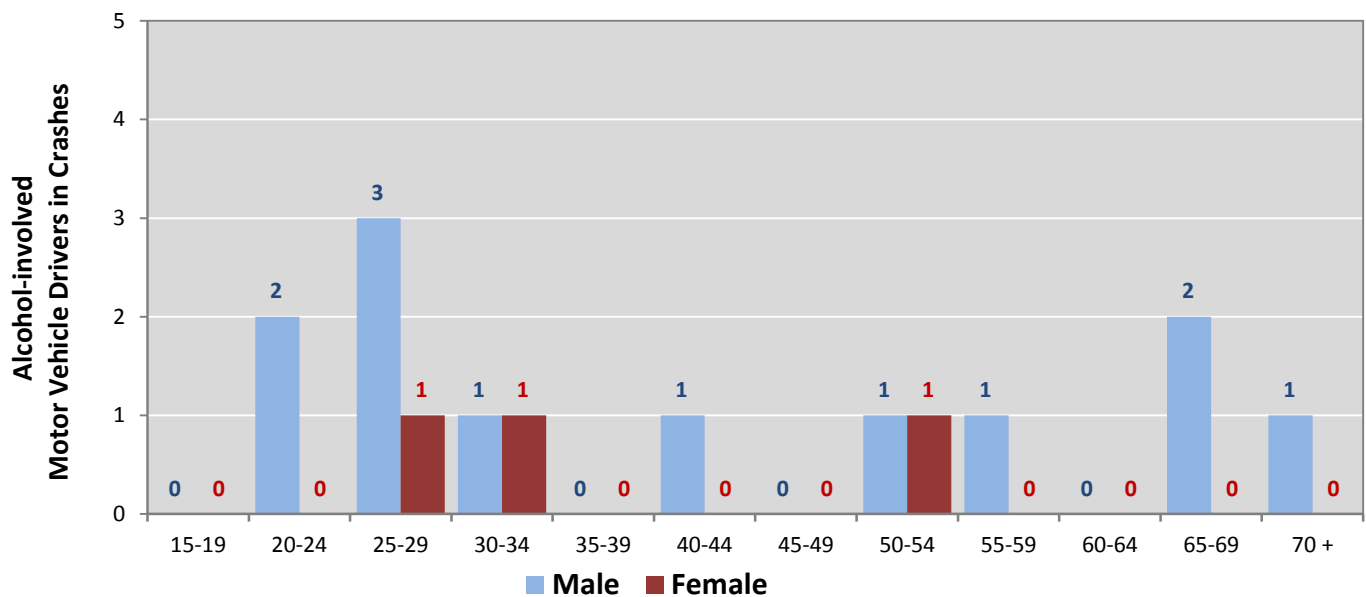
¹ See Page 17 for data on drivers of non-motorized vehicles in crashes (i.e. pedestrians and pedalcyclists).

Figure 6: Motor Vehicle Drivers in Crashes by Age Group and Sex in Las Vegas, 2016



* In 2016, Las Vegas had 93 drivers in crashes for which age or sex data were missing.

Figure 7: Alcohol-involved Motor Vehicle Drivers in Crashes by Age Group and Sex in Las Vegas, 2016



* In 2016, Las Vegas had 0 drivers in crashes for which age or sex data were missing.

**Table 13: Alcohol-involved Motor Vehicle Drivers Under 21
(Ages 15-20) in Crashes in Las Vegas, 2012-2016**

Age ¹	Year					5-Year Total
	2012	2013	2014	2015	2016	
15	0	0	0	0	0	0
16	0	0	0	0	0	0
17	3	0	1	0	0	4
18	0	0	0	0	0	0
19	1	0	0	2	0	3
20	0	3	0	2	1	6
Total Drivers	4	3	1	4	1	13

**Table 14: Motor Vehicle Drivers Under 21 (Ages 15-20) in Crashes
by Age, Sex and Alcohol-involvement in Las Vegas, 2016**

Age ¹	Total Drivers				Alcohol-involved Drivers			
	Sex		Total Drivers	Percent of Total	Sex		Total Drivers	Percent of Total
	Male	Female			Male	Female		
15	5	2	7	8%	0	0	0	0%
16	4	3	7	8%	0	0	0	0%
17	11	7	18	20%	0	0	0	0%
18	13	10	23	26%	0	0	0	0%
19	7	7	14	16%	0	0	0	0%
20	13	7	20	22%	1	0	1	100%
Total Drivers	53	36	89	100%	1	0	1	100%

¹ For analysis of drivers under age 21, when the driver age or sex are not identified on the crash report (typically hit-and-run drivers), the driver data are considered unreliable and are excluded from the analysis.

**Table 15: Frequency of Contributing Factors in Crashes
by Crash Severity in Las Vegas, 2016**

Contributing Factors	Frequency of Contributing Factor ¹ by Crash Severity			
	Frequency in Fatal Crashes	Frequency in Injury Crashes	Frequency in Property Damage Only Crashes	Frequency in All Crashes
Human	2	132	370	504
Driver Inattention	0	48	132	180
Failed to Yield Right of Way	0	23	44	67
Following Too Closely	0	14	41	55
Other Improper Driving	0	7	24	31
Excessive Speed	1	7	15	23
Improper Backing	0	1	19	20
Made Improper Turn	0	3	16	19
Speed Too Fast for Conditions	0	6	11	17
Alcohol Involved	1	5	9	15
Improper Overtaking	0	1	13	14
Passed Stop Sign	0	4	10	14
Avoid No Contact - Vehicle	0	4	8	12
Drove Left Of Center	0	3	6	9
Improper Lane Change	0	1	7	8
Disregarded Traffic Signal	0	1	6	7
Drug Involved	0	1	4	5
Vehicle Skidded Before Brake	0	0	3	3
Pedestrian Error	0	2	0	2
Avoid No Contact - Other	0	1	0	1
Driverless Moving Vehicle	0	0	1	1
Failed to Yield to Police Vehicle	0	0	1	1
Cell Phone	0	0	0	0
Failed to Yield to Emergency Vehicle	0	0	0	0
High Speed Pursuit	0	0	0	0
Texting	0	0	0	0
Vehicle	0	1	8	9
Inadequate Brakes	0	1	4	5
Defective Steering	0	0	2	2
Other Mechanical Defect	0	0	2	2
Defective Tires	0	0	0	0
Environment	0	1	1	2
Road Defect	0	0	1	1
Traffic Control Not Functioning	0	1	0	1
Low Visibility Due to Smoke	0	0	0	0
Other	0	76	220	296
None	0	48	148	196
Other - No Driver Error	0	28	72	100

¹ Multiple contributing factors may be reported for any vehicle in a crash.

Table 16: People in Crashes by Crash Classification and Severity of Injuries in Las Vegas, 2016

Crash Classification	People in Crashes by Severity of Injuries					Total People
	Fatalities (Class K)	Suspected Serious Injuries (Class A)	Suspected Minor Injuries (Class B)	Possible Injuries (Class C)	No Apparent Injuries (Class O)	
Animal	0	0	0	0	7	7
Fixed Object	0	1	2	5	29	37
Other (Non-Collision)	0	0	1	0	2	3
Other (Object)	0	0	0	0	8	8
Other Vehicle	0	0	5	68	535	608
Overturn/Rollover	0	0	4	2	4	10
Parked Vehicle	0	0	0	1	43	44
Pedalcyclist	0	0	0	1	1	2
Pedestrian	0	0	1	6	8	15
Railroad Train	0	0	0	0	0	0
Rollover	1	0	0	2	0	3
Vehicle on Other Road	0	0	4	0	7	11
Missing Data	0	0	1	10	62	73
Total People	1	1	18	95	706	821

**Table 17: Killed or Injured Unbelted People in Crashes
by Sex and Age Group in Las Vegas, 2016**

Age Groups	Unbelted People Killed or Injured ^{1,2}				Total People
	Male	Percent of Male	Female	Percent of Female	
0-4	0	0%	0	0%	0
5-9	0	0%	0	0%	0
10-14	0	0%	0	0%	0
15-19	0	0%	0	0%	0
20-24	2	100%	0	0%	2
25-29	0	0%	1	100%	1
30-34	0	0%	0	0%	0
35-39	0	0%	0	0%	0
40-44	0	0%	0	0%	0
45-49	0	0%	0	0%	0
50-54	0	0%	0	0%	0
55-59	0	0%	0	0%	0
60-64	0	0%	0	0%	0
65-69	0	0%	0	0%	0
70 +	0	0%	0	0%	0
Missing Data	0	0%	0	0%	0
Total People	2	100%	1	100%	3

¹ People injured are in one of three categories: suspected serious injury, suspected minor injury, or possible injury.

² Excludes people in or on buses, heavy trucks, motorcycles, or ATVs.

**Figure 8: Seatbelt Use by People in Crashes with Fatal or
Suspected Serious Injuries in Las Vegas, 2012-2016**

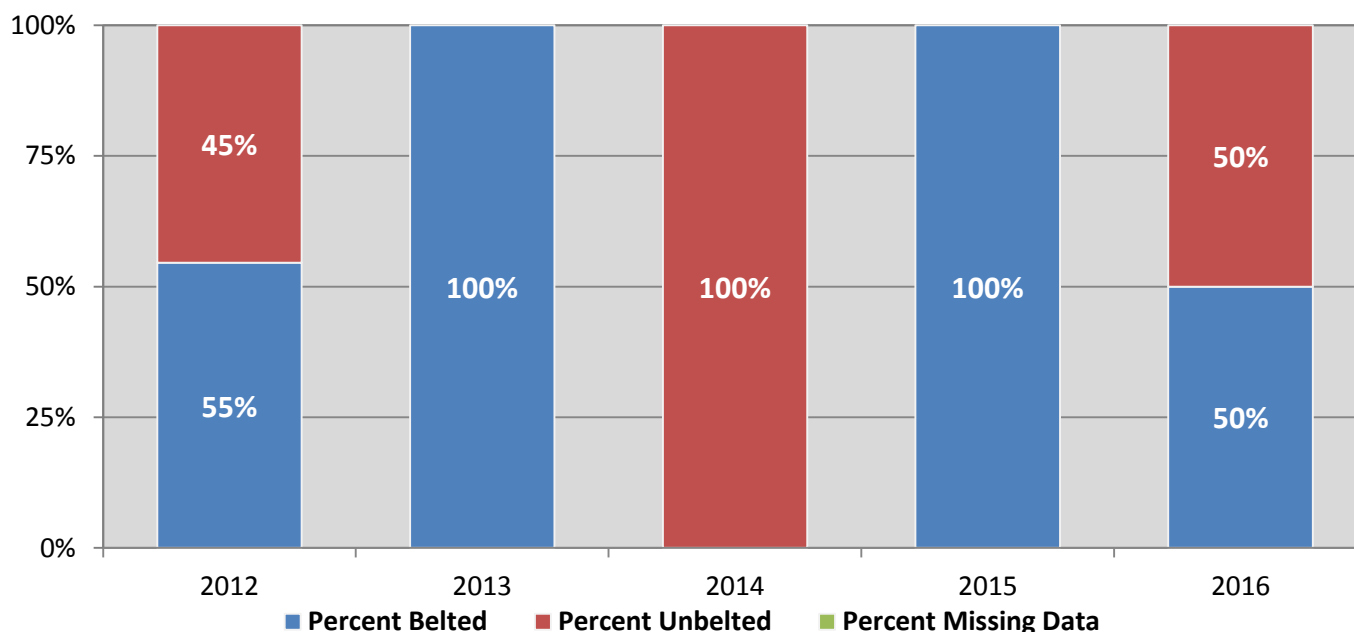
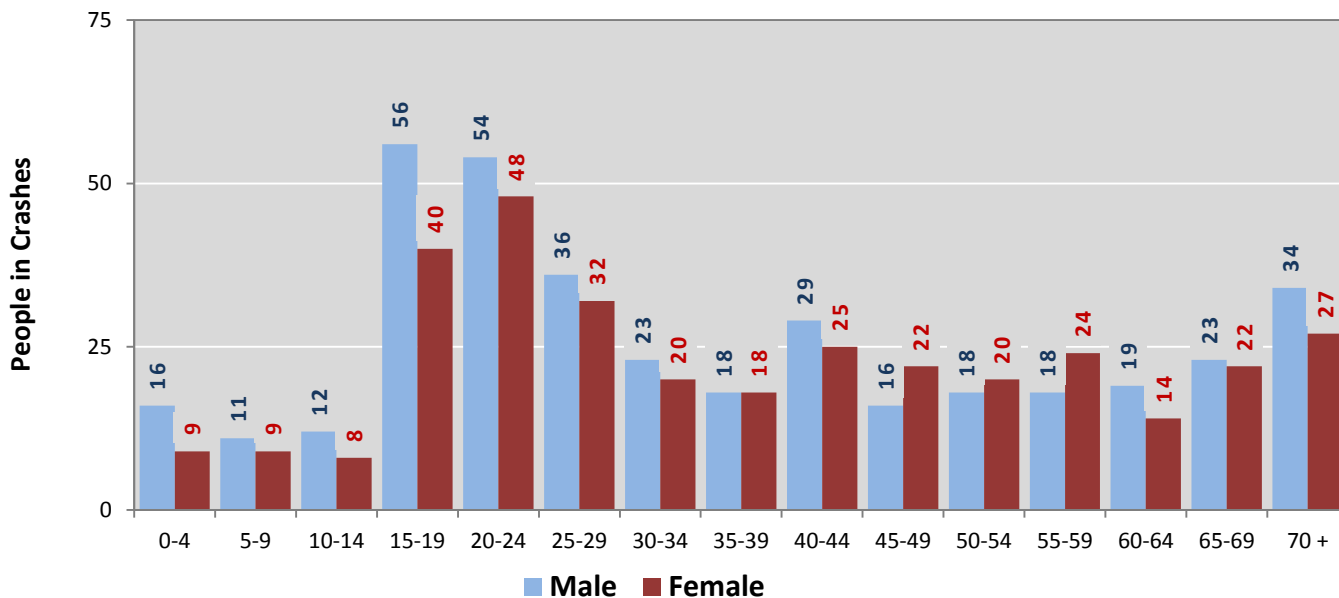
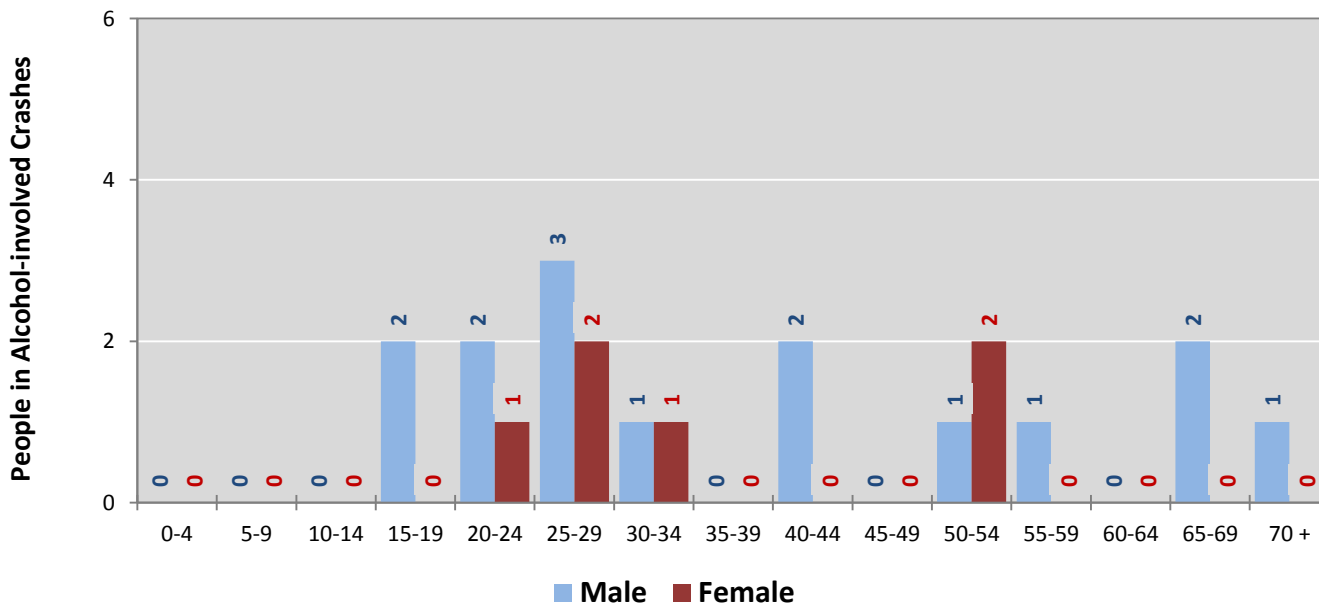


Figure 9: People in Crashes by Age Group and Sex in Las Vegas, 2016



* In 2016, Las Vegas had 100 people in crashes for which age or sex data were missing.

Figure 10: People in Alcohol-involved Crashes by Age Group and Sex in Las Vegas, 2016



* In 2016, Las Vegas had 3 people in alcohol-involved crashes for which age or sex data were missing.

**Table 18: Pedestrians and Pedalcyclists in Crashes
by Age Group in Las Vegas, 2012-2016**

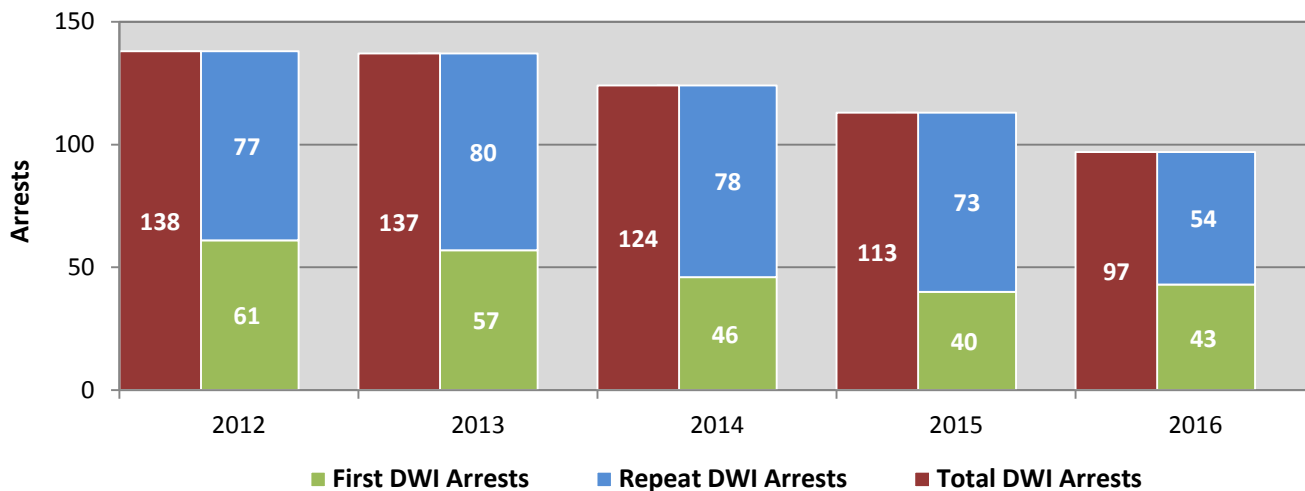
Age Groups	Pedestrians and Pedalcyclists ¹ in Crashes					5-Year Total People
	2012	2013	2014	2015	2016	
0-4	1	0	0	0	0	1
5-9	0	2	1	1	1	5
10-14	2	2	2	0	1	7
15-19	4	0	1	0	1	6
20-24	3	0	0	0	1	4
25-29	1	1	0	0	1	3
30-34	0	0	0	1	0	1
35-39	0	0	0	0	0	0
40-44	0	0	0	0	0	0
45-49	0	0	1	0	0	1
50-54	0	0	0	1	0	1
55-59	1	0	0	1	1	3
60-64	0	1	0	0	1	2
65-69	0	1	0	0	0	1
70 +	0	0	1	0	1	2
Missing Data	0	4	0	0	0	4
Total People	12	11	6	4	8	41

**Table 19: Pedestrians and Pedalcyclists in Crashes by Alcohol Involvement
and Severity of Injuries in Las Vegas, 2016**

Alcohol Involvement	Pedestrians and Pedalcyclists ¹ in Crashes					Total People
	Fatalities (Class K)	Suspected Serious Injuries (Class A)	Suspected Minor Injuries (Class B)	Possible Injuries (Class C)	No Apparent Injury (Class O)	
Total Pedalcyclists	0	0	0	1	0	1
Involved	0	0	0	0	0	0
Not Involved	0	0	0	1	0	1
Total Pedestrians	0	0	1	6	0	7
Involved	0	0	0	0	0	0
Not Involved	0	0	1	6	0	7
Total People	0	0	1	7	0	8

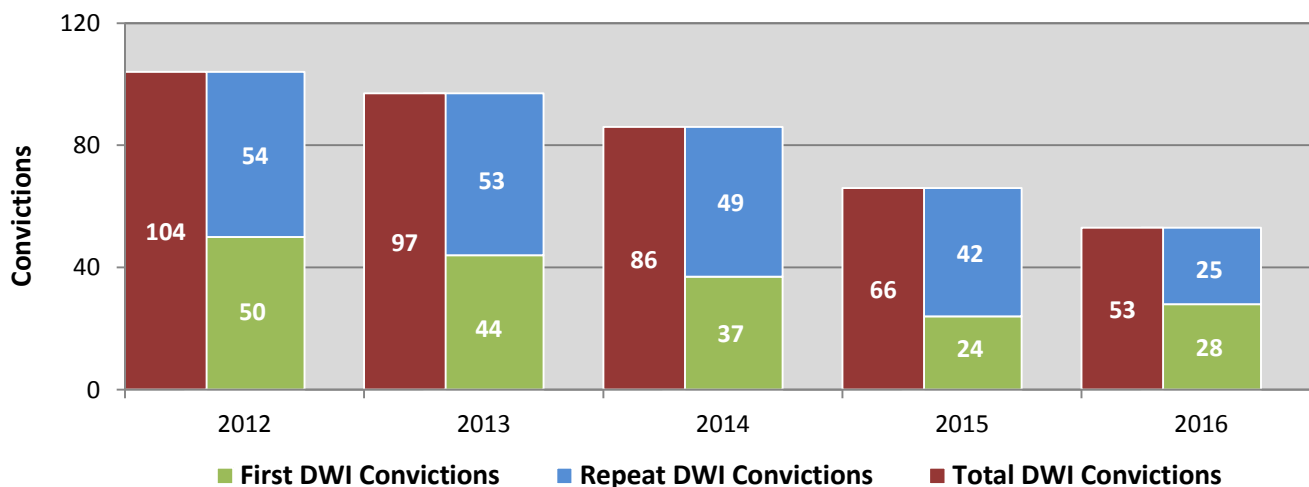
¹ Pedestrians and pedalcyclists are counted as non-motorized vehicles, when involved in a crash with a motor vehicle.

Figure 11: DWI Arrests of Las Vegas Residents Throughout the State, Showing First and Repeat DWI Arrests, 2012-2016



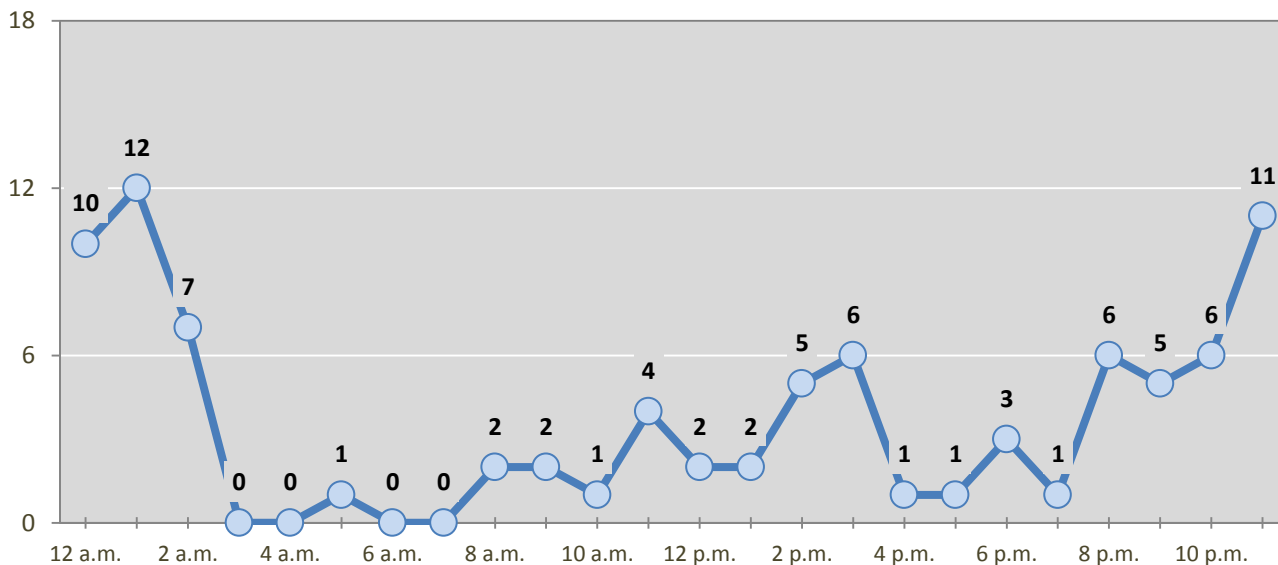
*Values are based upon the year of the arrest.

Figure 12: DWI Convictions of Las Vegas Residents Throughout the State, Showing First and Repeat DWI Convictions, 2012-2016



*Values are based upon the year of the conviction.

Figure 13: DWI Arrests by Hour of Las Vegas Residents Throughout the State, 2016



* In 2016, Las Vegas had 9 arrests for which hour data were missing.

Table 20: DWI Arrests by Day of Week of Las Vegas Residents Throughout the State, 2012-2016

Day of Week	Year					5-Year Average
	2012	2013	2014	2015	2016	
Sunday	25	22	21	19	19	21
Monday	14	20	10	17	14	15
Tuesday	14	16	9	14	7	12
Wednesday	13	11	16	9	10	12
Thursday	12	12	22	11	10	13
Friday	26	23	17	18	16	20
Saturday	34	33	29	25	21	28
Total Arrests	138	137	124	113	97	122

**Table 21: Driver First DWI Arrests by Age Group
of Las Vegas Residents Throughout the State, 2012-2016**

Age Groups	Driver First DWI Arrests ¹				
	2012	2013	2014	2015	2016
15-19	8	2	3	4	7
20-24	19	22	16	11	10
25-29	13	11	6	5	8
30-34	6	7	6	5	4
35-39	4	2	2	4	3
40-44	3	4	6	2	1
45-49	4	4	2	3	1
50-54	3	2	0	2	4
55-59	0	1	2	1	2
60-64	0	1	2	1	1
65-69	0	1	0	0	1
70 +	1	0	1	1	1
Missing Data	0	0	0	1	0
Total Drivers	61	57	46	40	43

¹Values are based upon the year of the arrest.

**Table 22: Driver Repeat DWI Arrests by Age Group
of Las Vegas Residents Throughout the State, 2012-2016**

Age Groups	Driver Repeat DWI Arrests ¹				
	2012	2013	2014	2015	2016
15-19	0	0	0	2	0
20-24	7	6	7	10	2
25-29	7	10	14	5	5
30-34	12	12	12	19	4
35-39	7	10	13	7	9
40-44	13	11	10	9	2
45-49	10	15	5	7	15
50-54	9	6	6	4	4
55-59	7	5	4	4	6
60-64	3	1	3	4	3
65-69	2	4	4	1	3
70 +	0	0	0	1	1
Missing Data	0	0	0	0	0
Total Drivers	77	80	78	73	54

¹Values are based upon the year of the arrest.

**Table 23: Driver First DWI Convictions by Age Group
of Las Vegas Residents Throughout the State, 2012-2016**

Age Groups	Driver First DWI Convictions ¹				
	2012	2013	2014	2015	2016
15-19	4	4	1	1	1
20-24	16	18	13	9	7
25-29	10	7	2	6	7
30-34	3	4	8	1	4
35-39	4	3	2	1	2
40-44	3	2	6	1	2
45-49	5	2	3	1	3
50-54	2	2	0	0	1
55-59	1	0	1	2	0
60-64	1	1	0	1	0
65-69	0	0	1	0	0
70 +	0	1	0	0	1
Missing Data	1	0	0	1	0
Total Drivers	50	44	37	24	28

¹Values are based upon the year of the conviction.

**Table 24: Driver Repeat DWI Convictions by Age Group
of Las Vegas Residents Throughout the State, 2012-2016**

Age Groups	Driver Repeat DWI Convictions ¹				
	2012	2013	2014	2015	2016
15-19	0	0	0	1	0
20-24	3	3	5	5	3
25-29	5	6	13	1	3
30-34	9	7	6	14	0
35-39	5	7	4	5	3
40-44	10	5	6	8	1
45-49	9	11	4	4	7
50-54	6	6	5	1	3
55-59	6	3	1	0	1
60-64	1	2	1	3	3
65-69	0	3	4	0	1
70 +	0	0	0	0	0
Missing Data	0	0	0	0	0
Total Drivers	54	53	49	42	25

¹Values are based upon the year of the conviction.

Table 25: Court Disposition of DWI Arrests for the State and of Las Vegas Residents Throughout the State, 2016

Court Disposition of DWI Arrest ¹	Las Vegas	Statewide	Percent of Statewide
Total DWI Arrests	97	10,344	0.9%
DWI Arrests Resulting in Convictions	48	5,541	0.9%
DWI Arrests Resulting in Dismissals ²	6	1,512	0.4%
DWI Arrests Awaiting Disposition	43	3,291	1.3%

¹ These are the number of DWI arrests in 2016 and whether the case resulted in a conviction or dismissal, or is still awaiting court disposition, as reported in the NM MVD Citation Tracking System (CTS) as of December 2017.

² For this table, a very small number of "not guilty" rulings may be included in the category Dismissals.

Table 26: Average Number of Days from Date of DWI Arrest to Date of Court Disposition for the State and of Las Vegas Residents Throughout the State, 2016

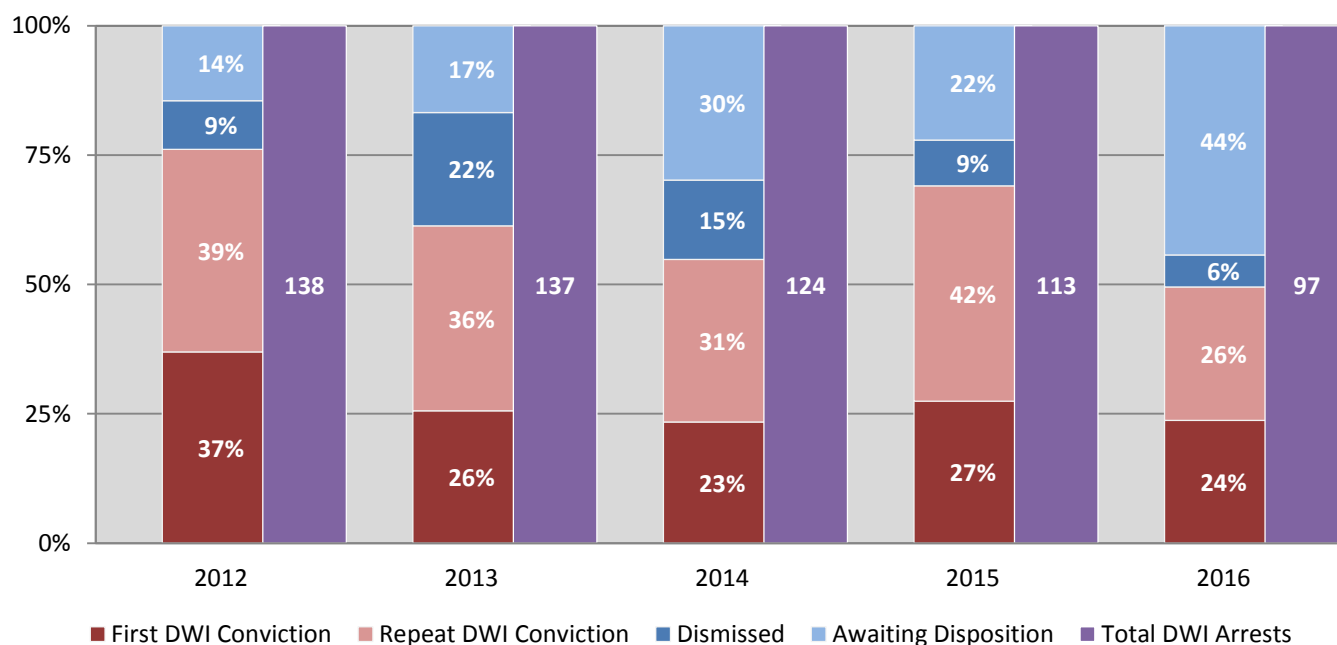
Court Disposition	Average Number of Days		Deviation from Statewide Average
	Las Vegas	Statewide	
DWI Conviction	155	157	-2
DWI Dismissal	174	179	-5

**Table 27: Court Disposition of DWI Arrests
of Las Vegas Residents Throughout the State, 2012-2016**

Year of DWI Arrest ¹	Court Disposition				Total DWI Arrests
	First DWI Conviction	Repeat DWI Conviction	Dismissed	Awaiting Disposition	
2012	51	54	13	20	138
2013	35	49	30	23	137
2014	29	39	19	37	124
2015	31	47	10	25	113
2016	23	25	6	43	97

¹Values are based upon the year of the arrest.

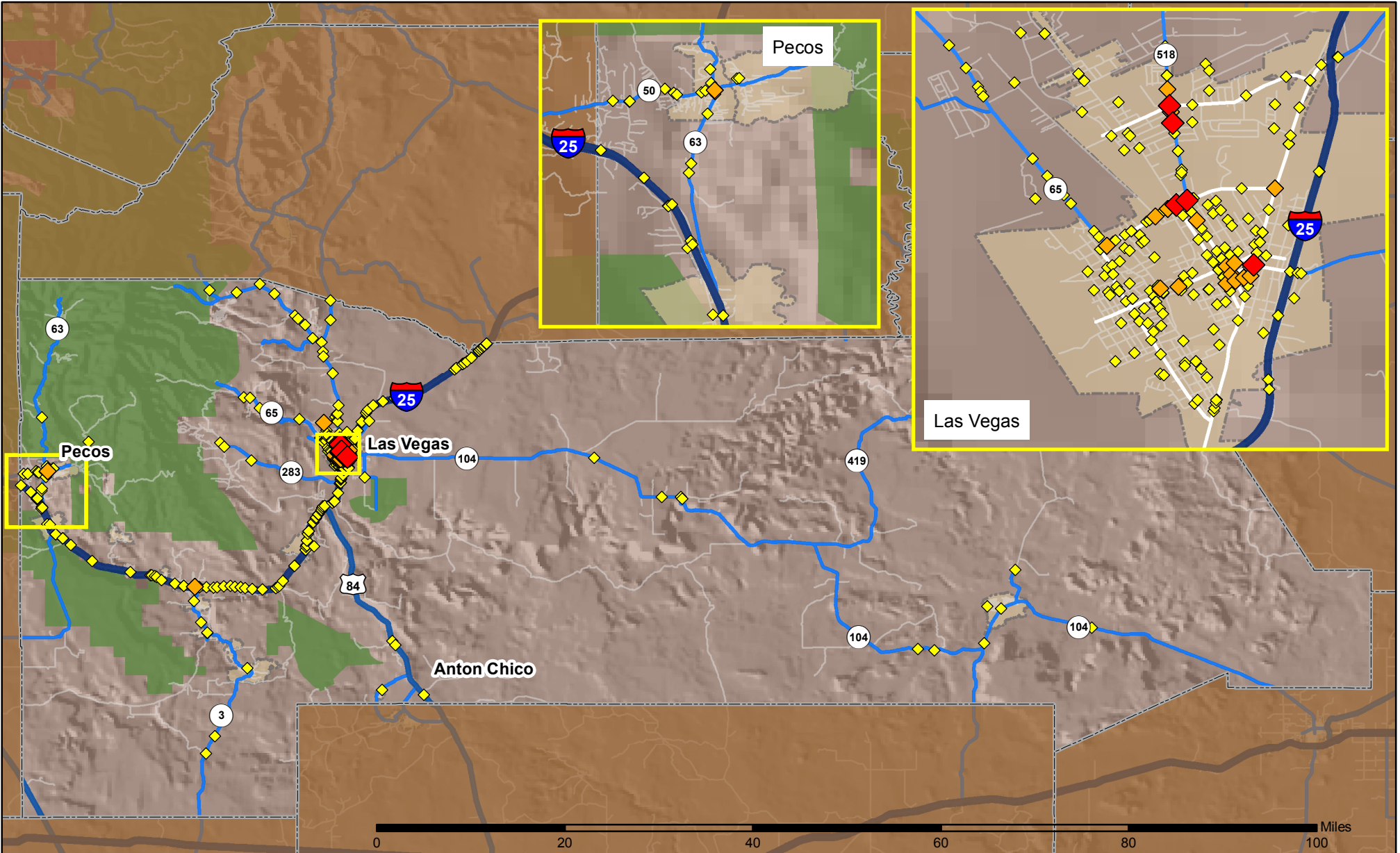
**Figure 14: Court Dispositions by Percentage of DWI Arrests
of Las Vegas Residents Throughout the State, 2012-2016**



*Table 27 contains the values used to calculate percentages shown in Figure 14.

Crashes in San Miguel County, New Mexico, 2016

Map created by the Traffic Research Unit, Geospatial & Population Studies at UNM



Legend

Data Source: NMDOT Crash File 2016
<http://tru.unm.edu> CO#5801 tru@unm.edu

- Forest & Wildlife Areas
- Reservations & Pueblos
- County Boundaries
- City Boundaries

- Interstate Highways
- U.S. Highways
- State Highways
- Streets & Roadways

Crashes 2016

- 1 - 2 Crashes
- 3 - 6 Crashes
- 7 - 14 Crashes