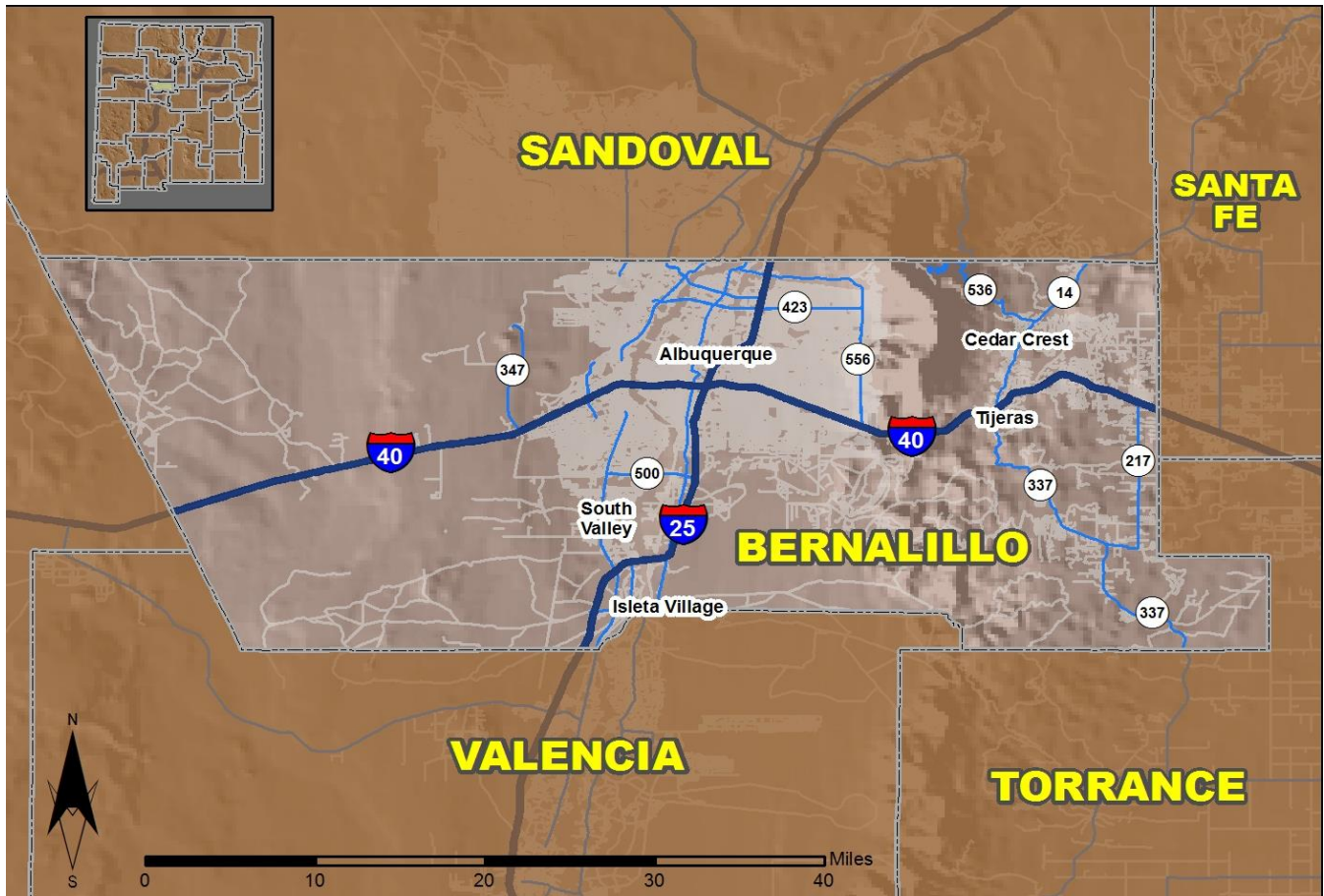


2016 Community Report

Bernalillo County



Produced for the New Mexico Department of Transportation,
Traffic Safety Division, Traffic Records Bureau,
Under Contract 5801 by the University of New Mexico,
Geospatial and Population Studies, Traffic Research Unit

Distributed in compliance with New Mexico Statute 66-7-214
as a reference source regarding New Mexico traffic crashes

For the purposes of this report, data are compiled by the University of New Mexico, Geospatial and Population Studies, Traffic Research Unit (TRU), on behalf of the New Mexico Department of Transportation (NMDOT). Data in this report may differ from that in other data sources, such as the Federal Fatality Analysis Reporting System (FARS), due to the timing of publications and rules for how data are compiled and maintained in Federal vs. State databases. If you have questions regarding this report, please contact the Traffic Safety Division at 505-827-0427.

<http://tru.unm.edu/Crash-Reports/Community-Reports/>

Definitions

Aggravated DWI – A driver arrested for 1) driving with a BAC of 0.16 or higher, 2) driving under the influence of alcohol or drugs and causing bodily injury to a human being as a result, or 3) driving under the influence of alcohol or drugs and refusing to submit to a BAC test at the time of arrest for DWI.

Alcohol-involved Crash – A crash for which the Uniform Crash Report indicated that 1) a DWI citation was issued, 2) alcohol was a contributing factor, or 3) a person in control of a vehicle (including a pedestrian or pedalcyclist) was suspected of being under the influence of alcohol.

Alcohol-involved Driver – A person in control of a vehicle who was cited for DWI or indicated on the Uniform Crash Report as being either suspected or determined by testing to be under the influence of alcohol. There can be multiple alcohol-involved drivers in a single alcohol-involved crash.

Crash – A reported incident on a public roadway involving one or more motor vehicles that resulted in death, personal injury, or at least \$500 in property damage. Crashes on private property (such as a parking lot) are not included.

DWI Arrest (Citation) – In this report, a DWI arrest (a.k.a. a DWI citation) is a driver arrested for either DWI or aggravated DWI. New Mexico’s legal limit for presumption of driving while intoxicated (DWI) is 0.08 for non-commercial drivers older than 21 years of age, 0.04 for commercial vehicle drivers, and 0.02 for drivers younger than 21 years of age.

DWI Conviction – A driver convicted of driving under the intoxicating influence of alcohol, narcotics, or pathogenic drugs, including aggravated DWI.

Fatal Crash – A crash in which at least one person was killed. More than one person can be killed in a single fatal crash.

Fatalities – The number of people killed in a crash. The terms “killed” and “deaths” are synonymous with “fatalities.” A fatality is crash-related if it occurs at the time of the crash or if the person(s) involved in the crash dies within 30 days.

Injury Crash – A reported crash in which at least one person was injured. Injury crashes involve at least one suspected serious injury (Class A), suspected minor injury (Class B), or possible injury (Class C). Fatal crashes are not included.

Missing Data – An indication that the applicable field on the UCR form was left blank or contained an invalid code. Starting with crashes that occurred in 2012, improvements in the identification of missing data in the NMDOT crash database led to an increase in the reported amount of missing data.

Pedalcyclist – A person riding a mechanism of transport that is powered solely by pedals (a.k.a. bicyclist).

Pedestrian – A person on foot, walking, running, jogging, hiking, sitting or lying down who is involved in a motor vehicle traffic crash.

Sources

Crash Data – New Mexico Department of Transportation, Traffic Safety Division, Traffic Records Bureau, Traffic Crash Database, as of the report date below. Crash data are compiled using NMDOT Uniform Crash Reports (UCR), submitted by law enforcement agencies in the state, for any incident on a public roadway involving one or more motor vehicles that resulted in death, injury, or at least \$500 in property damage. These reports are processed by the NMDOT Traffic Records Bureau and analyzed by the University of New Mexico, Geospatial and Population Studies, Traffic Research Unit (TRU).

DWI Citation Tracking System (CTS) – New Mexico Taxation and Revenue Department (NM TRD), Motor Vehicle Division (MVD), DWI Citation Tracking System (CTS), as of December 2017. Repeat offenders are identified by the combination of account key, arrest date, and citation number. County data are based upon the county where the arrest took place. City data are based upon the city where the offender resides.

Urban Areas – New Mexico Department of Transportation, Asset Management and Planning, 2010 U.S. Census Urbanized Area Boundaries, NMDOT-Adjusted, and U.S. Census Urban Clusters, August 21, 2013. In crashes before 2013, “urban” was defined as a town or city with a population of at least 2,500 people.

Table 1: Total Crashes and Alcohol-involved Crashes by Crash Severity in Bernalillo County, 2007-2016

Year	Total Crashes				Alcohol-involved Crashes			
	Fatal	Injury	Property Damage Only	Total	Fatal	Injury	Property Damage Only	Total
2007	66	5,612	15,622	21,300	30	334	419	783
2008	54	5,253	14,150	19,457	21	301	448	770
2009	55	5,174	13,487	18,716	20	325	501	846
2010	42	4,768	12,196	17,006	22	244	332	598
2011	40	4,991	12,415	17,446	15	302	364	681
2012	68	4,279	12,216	16,563	28	244	370	642
2013	49	4,545	11,721	16,315	25	249	320	594
2014	65	5,018	13,008	18,091	33	286	316	635
2015	59	5,785	13,740	19,584	31	288	356	675
2016	95	6,171	13,230	19,496	49	310	330	689

Figure 1: Alcohol-involved Fatal and Injury Crashes Compared with Non-alcohol-involved Fatal and Injury Crashes in Bernalillo County, 2007-2016

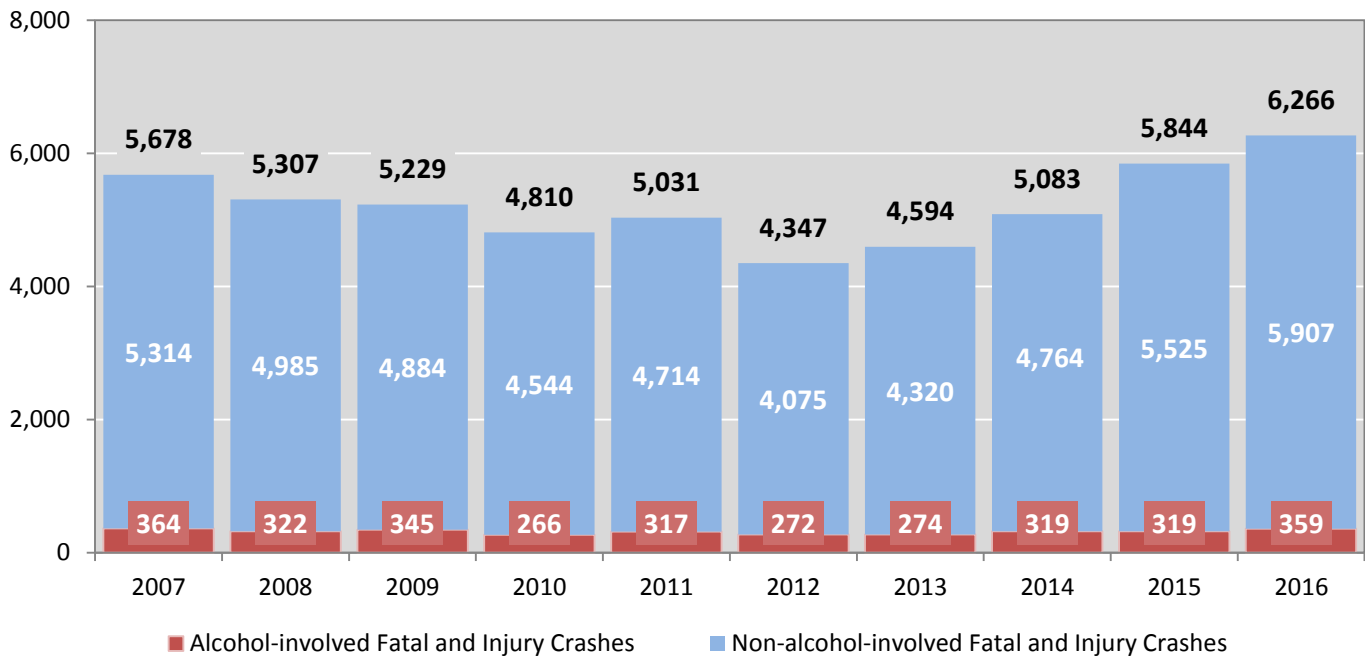


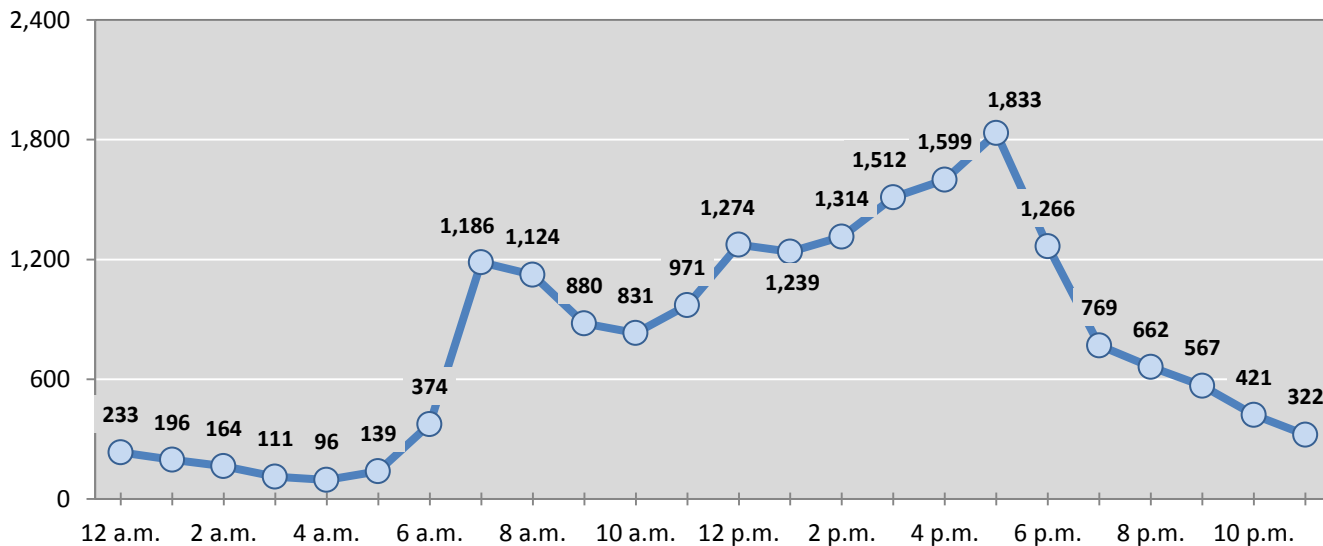
Table 2: Crashes by Month in Bernalillo County, 2012-2016

Month	Crashes					5-Year Average
	2012	2013	2014	2015	2016	
January	1,342	1,328	1,409	1,576	1,367	1,404
February	693	1,239	1,404	1,692	1,520	1,310
March	796	1,291	1,544	1,648	1,581	1,372
April	1,525	1,139	1,416	1,582	1,406	1,414
May	1,613	1,257	1,530	1,614	1,631	1,529
June	1,578	1,272	1,435	1,584	1,439	1,462
July	1,501	1,349	1,487	1,583	1,421	1,468
August	1,683	1,558	1,531	1,505	1,836	1,623
September	1,062	1,572	1,651	1,699	1,783	1,553
October	1,511	1,781	1,503	1,794	1,897	1,697
November	1,629	1,362	1,585	1,625	1,774	1,595
December	1,630	1,167	1,596	1,682	1,841	1,583
Total Crashes	16,563	16,315	18,091	19,584	19,496	18,010

Table 3: Alcohol-involved Crashes by Month in Bernalillo County, 2012-2016

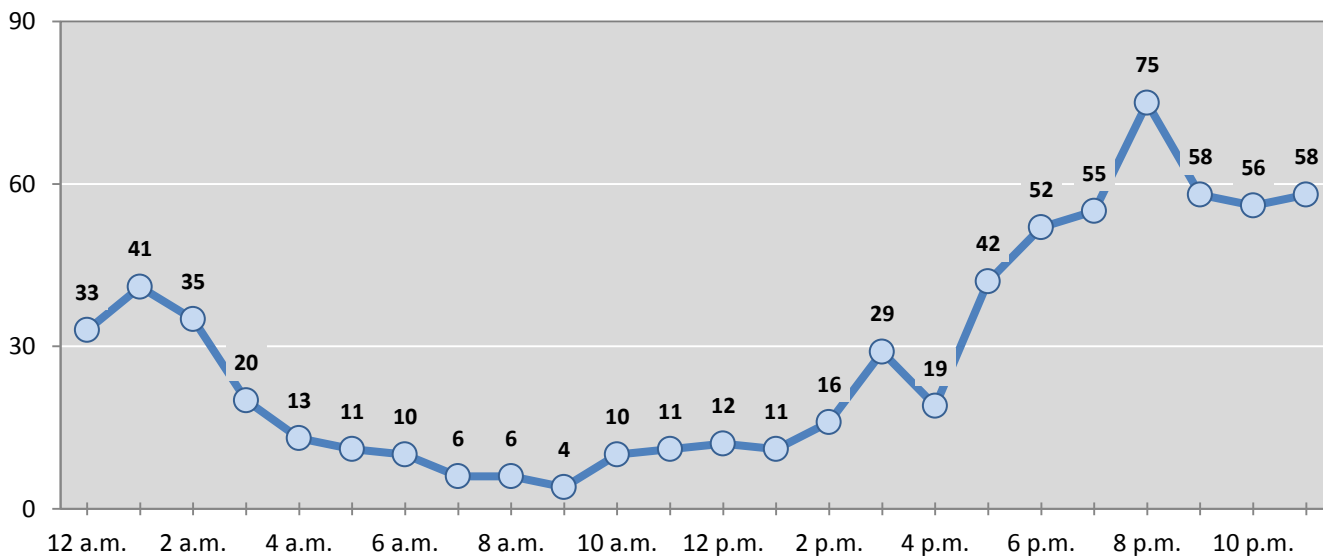
Month	Alcohol-involved Crashes					5-Year Average
	2012	2013	2014	2015	2016	
January	58	53	51	60	59	56
February	27	52	39	62	79	52
March	41	54	53	54	62	53
April	61	40	40	69	47	51
May	69	56	59	59	51	59
June	57	47	56	60	47	53
July	65	51	58	48	49	54
August	36	50	59	54	59	52
September	50	48	51	62	58	54
October	59	56	49	62	67	59
November	53	52	65	47	52	54
December	66	35	55	38	59	51
Total Crashes	642	594	635	675	689	647

Figure 2: Crashes by Hour in Bernalillo County, 2016



* In 2016, Bernalillo County had 413 crashes for which hour data were missing.

Figure 3: Alcohol-involved Crashes by Hour in Bernalillo County, 2016



* In 2016, Bernalillo County had 6 alcohol-involved crashes for which hour data were missing.

Table 4: Alcohol-involved Crashes by Day of Week in Bernalillo County, 2012-2016

Day of Week	Alcohol-involved Crashes					5-Year Average
	2012	2013	2014	2015	2016	
Sunday	121	95	104	106	102	106
Monday	56	50	77	75	64	64
Tuesday	53	55	77	69	78	66
Wednesday	62	76	81	90	95	81
Thursday	89	86	64	91	96	85
Friday	91	93	105	106	114	102
Saturday	170	139	127	138	140	143
Total Crashes	642	594	635	675	689	647

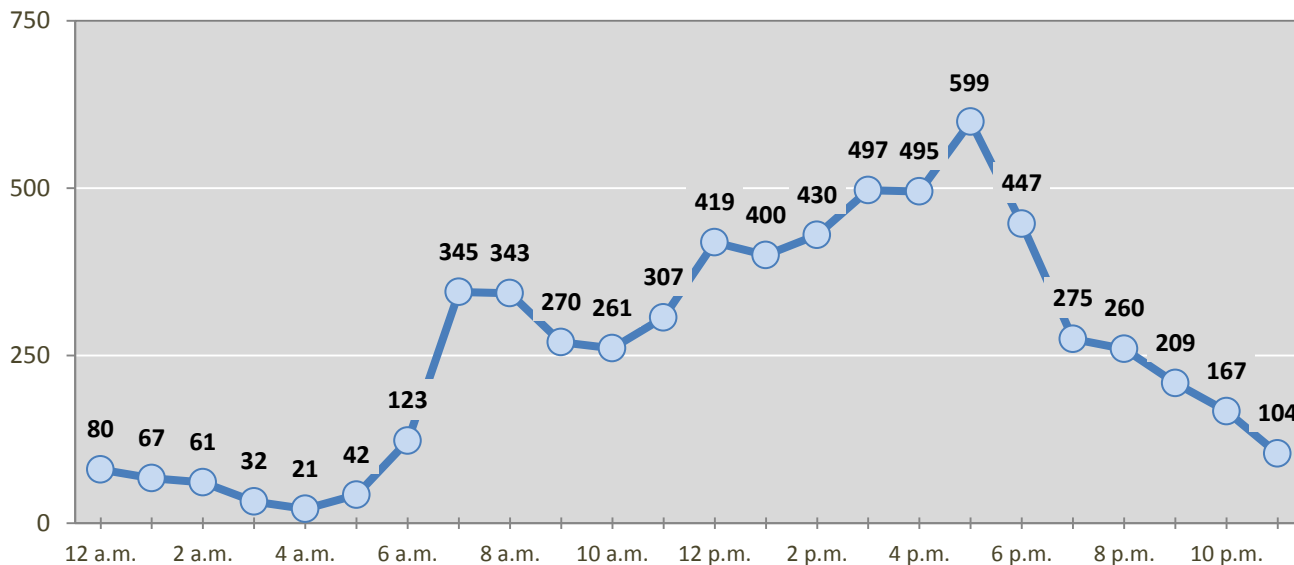
Table 5: Fatal and Injury Crashes by Day of Week in Bernalillo County, 2012-2016

Day of Week	Fatal and Injury Crashes					5-Year Average
	2012	2013	2014	2015	2016	
Sunday	378	431	459	534	555	471
Monday	593	731	781	850	918	775
Tuesday	631	656	731	914	924	771
Wednesday	753	707	831	882	1,053	845
Thursday	649	704	809	881	952	799
Friday	798	806	851	992	1,048	899
Saturday	545	559	621	791	816	666
Total Crashes	4,347	4,594	5,083	5,844	6,266	5,227

Table 6: Pedestrian and Pedalcyclist Crashes by Day of Week in Bernalillo County, 2012-2016

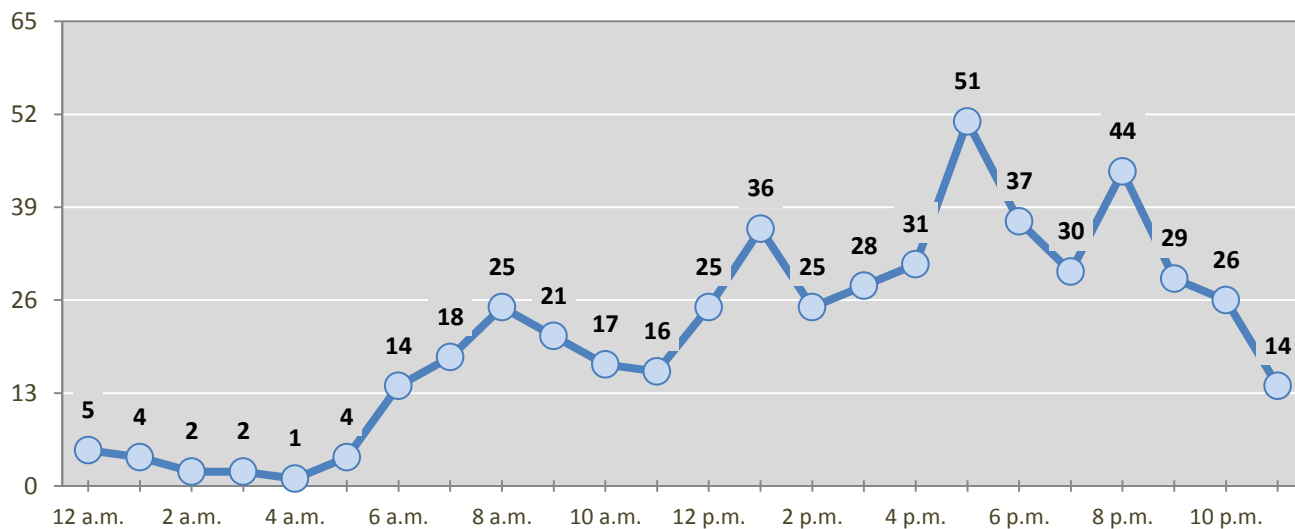
Day of Week	Pedestrian and Pedalcyclist Crashes					5-Year Average
	2012	2013	2014	2015	2016	
Sunday	33	44	39	45	36	39
Monday	59	45	67	77	82	66
Tuesday	49	64	74	94	94	75
Wednesday	65	66	72	64	92	72
Thursday	73	69	78	93	78	78
Friday	74	62	91	85	73	77
Saturday	65	45	49	52	51	52
Total Crashes	418	395	470	510	506	460

Figure 4: Fatal and Injury Crashes by Hour in Bernalillo County, 2016



* In 2016, Bernalillo County had 12 crashes for which hour data were missing.

Figure 5: Pedestrian and Pedalcyclist Crashes by Hour in Bernalillo County, 2016



* In 2016, Bernalillo County had 1 crashes for which hour data were missing.

Table 7: Severity of Injuries to People in Crashes by Rural and Urban Location in Bernalillo County, 2016

Urban and Rural Locations by Alcohol-involvement	People in Crashes by Severity of Injuries					Total People
	Fatalities (Class K)	Suspected Serious Injuries (Class A)	Suspected Minor Injuries (Class B)	Possible Injuries (Class C)	No Apparent Injuries (Class O)	
People in Alcohol-involved Crashes	51	65	185	257	1,142	1,700
Urban	50	64	182	253	1,118	1,667
Rural Non-Interstate	1	1	2	1	14	19
Rural Interstate	0	0	1	3	10	14
People in Crashes	100	524	1,817	6,921	41,389	50,751
Urban	96	517	1,788	6,861	41,006	50,268
Rural Non-Interstate	2	6	19	31	166	224
Rural Interstate	2	1	10	29	217	259
Percent in Alcohol-involved Crashes	51%	12%	10%	4%	3%	3%

Table 8: Total Crashes by Roadway System and Crash Severity in Bernalillo County, 2012-2016

Crash Severity by System	Crashes by Year					5-Year Average
	2012	2013	2014	2015	2016	
Total Rural Interstate	169	107	72	73	107	105
Fatal Crash	8	4	2	1	2	3
Injury Crash	58	23	23	25	28	31
Property Damage Only Crash	103	80	47	47	77	71
Total Rural Non-Interstate	294	162	154	148	112	174
Fatal Crash	5	1	3	3	2	3
Injury Crash	81	40	46	49	38	51
Property Damage Only Crash	208	121	105	96	72	120
Total Urban	16,100	16,046	17,865	19,363	19,277	17,730
Fatal Crash	55	44	60	55	91	61
Injury Crash	4,140	4,482	4,949	5,711	6,105	5,077
Property Damage Only Crash	11,905	11,520	12,856	13,597	13,081	12,592

Table 9: Total Crashes by Crash Classification in Bernalillo County, 2012-2016

Crash Classification	Total Crashes by Year					5-Year Average
	2012	2013	2014	2015	2016	
Animal	30	33	32	30	37	32
Fixed Object	1,115	1,178	1,198	1,346	1,429	1,253
Other (Non-Collision)	151	130	130	110	145	133
Other (Object)	271	210	275	264	227	249
Other Vehicle	12,530	12,496	13,752	15,193	15,294	13,853
Overturn/Rollover	216	209	194	162	138	184
Parked Vehicle	1,138	945	1,022	825	664	919
Pedalcyclist	203	160	164	180	195	180
Pedestrian	241	240	301	332	314	286
Railroad Train	0	2	5	0	2	2
Rollover	0	0	6	110	66	36
Vehicle on Other Road	63	78	120	33	139	87
Missing Data	605	634	892	999	846	795
Total Crashes	16,563	16,315	18,091	19,584	19,496	18,010

Table 10: Vehicles in Crashes by Vehicle Type in Bernalillo County, 2012-2016

Vehicle Type ¹	Vehicles in Crashes by Vehicle Type					5-Year Average
	2012	2013	2014	2015	2016	
Bus	190	180	205	198	260	207
Motorcycle	450	409	456	496	478	458
Passenger	16,350	16,574	17,516	20,619	22,792	18,770
Pedalcyclist	208	164	165	182	197	183
Pedestrian	224	244	317	337	336	292
Pickup	4,274	4,311	4,601	5,031	5,619	4,767
Semi	538	556	626	694	745	632
Van/SUV/4WD	4,380	4,478	4,966	5,097	5,892	4,963
Other Vehicle	1,497	1,709	511	878	115	942
Missing Data	4,279	3,519	6,149	5,603	2,679	4,446
Total Vehicles	32,390	32,144	35,512	39,135	39,113	35,659

¹ Pedestrians and pedalcyclists are counted as non-motorized vehicles, when involved in a crash with a motor vehicle. See Page 17 for data on drivers of non-motorized vehicles in crashes (i.e. pedestrians and pedalcyclists).

Table 11: Motor Vehicle Drivers in Crashes by Vehicle Type and Age Group in Bernalillo County, 2016

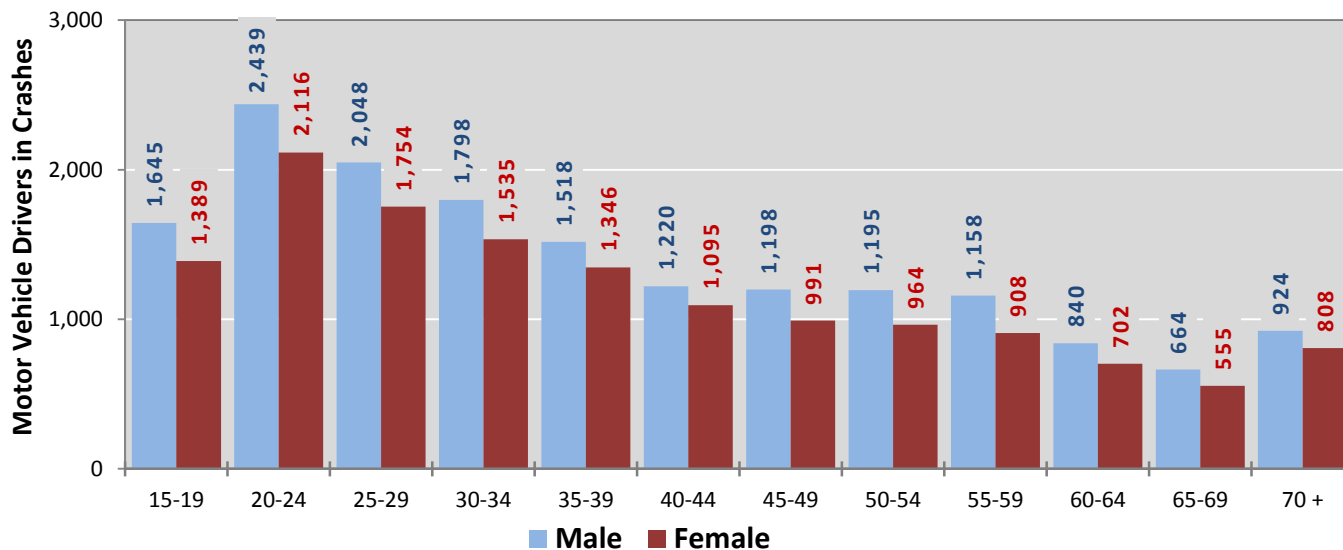
Age Groups	Motor Vehicle ¹ Drivers by Vehicle Type and Age Group								Total Drivers
	Bus	Motor-cycle	Passenger	Pickup	Semi	Van 4WD SUV	Other Vehicle	Missing Data	
15-19	0	45	2,328	333	8	349	8	77	3,148
20-24	13	90	3,541	460	28	462	11	119	4,724
25-29	30	71	2,634	454	66	571	10	94	3,930
30-34	11	53	2,126	512	86	595	5	80	3,468
35-39	16	33	1,681	490	83	593	8	64	2,968
40-44	21	24	1,410	385	63	421	7	67	2,398
45-49	25	32	1,241	432	82	383	8	58	2,261
50-54	35	43	1,200	406	79	392	8	64	2,227
55-59	59	28	1,167	407	73	359	7	32	2,132
60-64	31	15	830	326	43	311	5	38	1,599
65-69	5	11	752	215	19	224	3	33	1,262
70 +	2	4	1,198	242	8	305	7	47	1,813
Missing Data	12	29	2,684	957	107	927	28	1,906	6,650
Total Drivers	260	478	22,792	5,619	745	5,892	115	2,679	38,580

Table 12: Alcohol-involved Motor Vehicle Drivers in Crashes by Vehicle Type and Age Group in Bernalillo County, 2016

Age Groups	Alcohol-involved Motor Vehicle ¹ Drivers by Vehicle Type and Age Group								Total Drivers
	Bus	Motor-cycle	Passenger	Pickup	Semi	Van 4WD SUV	Other Vehicle	Missing Data	
15-19	0	0	24	8	0	6	0	0	38
20-24	0	1	88	6	0	14	2	0	111
25-29	0	5	70	16	0	14	0	2	107
30-34	0	2	53	20	0	5	0	0	80
35-39	0	1	36	12	0	9	0	2	60
40-44	0	0	22	3	0	5	0	0	30
45-49	0	1	26	16	0	5	0	0	48
50-54	0	2	24	6	0	4	0	0	36
55-59	0	0	16	10	0	3	0	0	29
60-64	0	0	9	1	0	2	0	0	12
65-69	0	0	7	1	0	1	0	0	9
70 +	0	0	3	1	0	1	0	1	6
Missing Data	0	1	28	8	1	6	0	9	53
Total Drivers	0	13	406	108	1	75	2	14	619

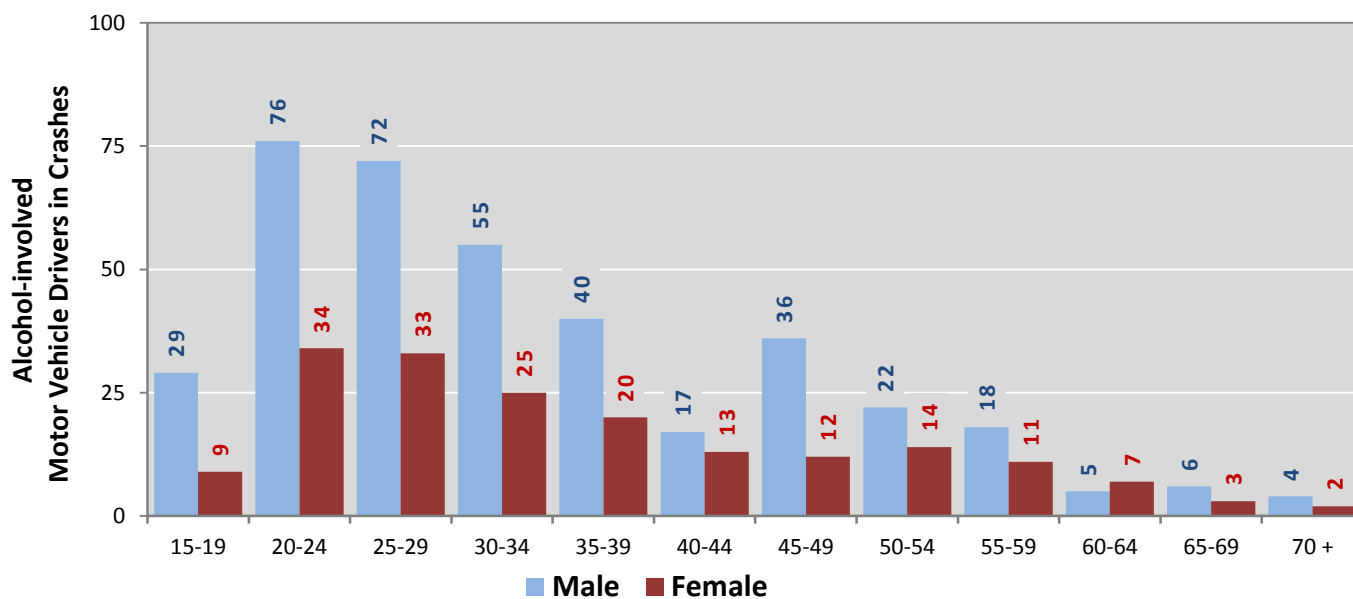
¹ See Page 17 for data on drivers of non-motorized vehicles in crashes (i.e. pedestrians and pedalcyclists).

Figure 6: Motor Vehicle Drivers in Crashes by Age Group and Sex in Bernalillo County, 2016



* In 2016, Bernalillo County had 7770 drivers in crashes for which age or sex data were missing.

Figure 7: Alcohol-involved Motor Vehicle Drivers in Crashes by Age Group and Sex in Bernalillo County, 2016



* In 2016, Bernalillo County had 56 drivers in crashes for which age or sex data were missing.

Table 13: Alcohol-involved Motor Vehicle Drivers Under 21 (Ages 15-20) in Crashes in Bernalillo County, 2012-2016

Age ¹	Year					5-Year Total
	2012	2013	2014	2015	2016	
15	1	0	0	0	1	2
16	0	2	2	1	3	8
17	9	0	4	3	7	23
18	11	8	5	7	13	44
19	14	7	12	8	14	55
20	19	19	13	18	16	85
Total Drivers	54	36	36	37	54	217

Table 14: Motor Vehicle Drivers Under 21 (Ages 15-20) in Crashes by Age, Sex and Alcohol-involvement in Bernalillo County, 2016

Age ¹	Total Drivers				Alcohol-involved Drivers			
	Sex		Total Drivers	Percent of Total	Sex		Total Drivers	Percent of Total
	Male	Female			Male	Female		
15	61	71	132	3%	0	1	1	2%
16	244	197	441	11%	2	1	3	6%
17	356	321	677	17%	6	1	7	13%
18	485	371	856	21%	11	2	13	24%
19	499	429	928	23%	10	4	14	26%
20	543	470	1013	25%	11	5	16	30%
Total Drivers	2,188	1,859	4,047	100%	40	14	54	100%

¹ For analysis of drivers under age 21, when the driver age or sex are not identified on the crash report (typically hit-and-run drivers), the driver data are considered unreliable and are excluded from the analysis.

**Table 15: Frequency of Contributing Factors in Crashes
by Crash Severity in Bernalillo County, 2016**

Contributing Factors	Frequency of Contributing Factor ¹ by Crash Severity			
	Frequency in Fatal Crashes	Frequency in Injury Crashes	Frequency in Property Damage Only Crashes	Frequency in All Crashes
Human	230	10,469	19,585	30,284
Driver Inattention	38	4,075	7,182	11,295
Failed to Yield Right of Way	14	1,339	1,802	3,155
Following Too Closely	2	852	1,979	2,833
Other Improper Driving	12	602	1,283	1,897
Excessive Speed	29	595	1,080	1,704
Disregarded Traffic Signal	10	675	850	1,535
Made Improper Turn	1	289	893	1,183
Improper Lane Change	1	196	849	1,046
Avoid No Contact - Other	6	362	546	914
Speed Too Fast for Conditions	11	288	580	879
Avoid No Contact - Vehicle	5	225	510	740
Alcohol Involved	49	315	333	697
Improper Overtaking	1	108	485	594
Improper Backing	0	17	340	357
Passed Stop Sign	1	99	195	295
Drove Left Of Center	5	107	157	269
Cell Phone	0	56	176	232
Pedestrian Error	22	159	29	210
Vehicle Skidded Before Brake	1	31	132	164
Drug Involved	21	49	74	144
Failed to Yield to Police Vehicle	0	15	31	46
Driverless Moving Vehicle	0	4	40	44
Failed to Yield to Emergency Vehicle	0	3	20	23
High Speed Pursuit	0	5	15	20
Texting	1	3	4	8
Vehicle	4	207	432	643
Inadequate Brakes	1	90	206	297
Other Mechanical Defect	0	70	119	189
Defective Tires	2	29	58	89
Defective Steering	1	18	49	68
Environment	0	15	56	71
Road Defect	0	6	26	32
Traffic Control Not Functioning	0	9	21	30
Low Visibility Due to Smoke	0	0	9	9
Other	63	6,243	9,644	15,950
None	50	5,510	8,183	13,743
Other - No Driver Error	13	733	1,461	2,207

¹ Multiple contributing factors may be reported for any vehicle in a crash.

Table 16: People in Crashes by Crash Classification and Severity of Injuries in Bernalillo County, 2016

Crash Classification	People in Crashes by Severity of Injuries					Total People
	Fatalities (Class K)	Suspected Serious Injuries (Class A)	Suspected Minor Injuries (Class B)	Possible Injuries (Class C)	No Apparent Injuries (Class O)	
Animal	0	0	1	4	42	47
Fixed Object	11	55	178	254	1,493	1,991
Other (Non-Collision)	0	4	38	20	171	233
Other (Object)	0	0	18	28	351	397
Other Vehicle	39	355	1,278	6,306	34,941	42,919
Overturn/Rollover	8	14	53	54	83	212
Parked Vehicle	0	4	13	20	1,381	1,418
Pedalcyclist	1	16	87	70	261	435
Pedestrian	35	57	114	126	422	754
Railroad Train	0	0	0	1	6	7
Rollover	6	16	34	22	34	112
Vehicle on Other Road	0	3	3	6	321	333
Missing Data	0	0	0	10	1,883	1,893
Total People	100	524	1,817	6,921	41,389	50,751

Table 17: Killed or Injured Unbelted People in Crashes by Sex and Age Group in Bernalillo County, 2016

Age Groups	Unbelted People Killed or Injured ^{1,2}				Total People
	Male	Percent of Male	Female	Percent of Female	
0-4	6	7%	5	7%	11
5-9	4	4%	2	3%	6
10-14	6	7%	6	8%	12
15-19	11	12%	9	12%	20
20-24	20	22%	16	22%	36
25-29	19	21%	9	12%	28
30-34	4	4%	4	5%	8
35-39	6	7%	5	7%	11
40-44	3	3%	5	7%	8
45-49	3	3%	4	5%	7
50-54	2	2%	4	5%	6
55-59	3	3%	2	3%	5
60-64	1	1%	1	1%	2
65-69	1	1%	0	0%	1
70 +	1	1%	2	3%	3
Missing Data	2	2%	0	0%	2
Total People	92	100%	74	100%	166

¹ People injured are in one of three categories: suspected serious injury, suspected minor injury, or possible injury.

² Excludes people in or on buses, heavy trucks, motorcycles, or ATVs.

Figure 8: Seatbelt Use by People in Crashes with Fatal or Suspected Serious Injuries in Bernalillo County, 2012-2016

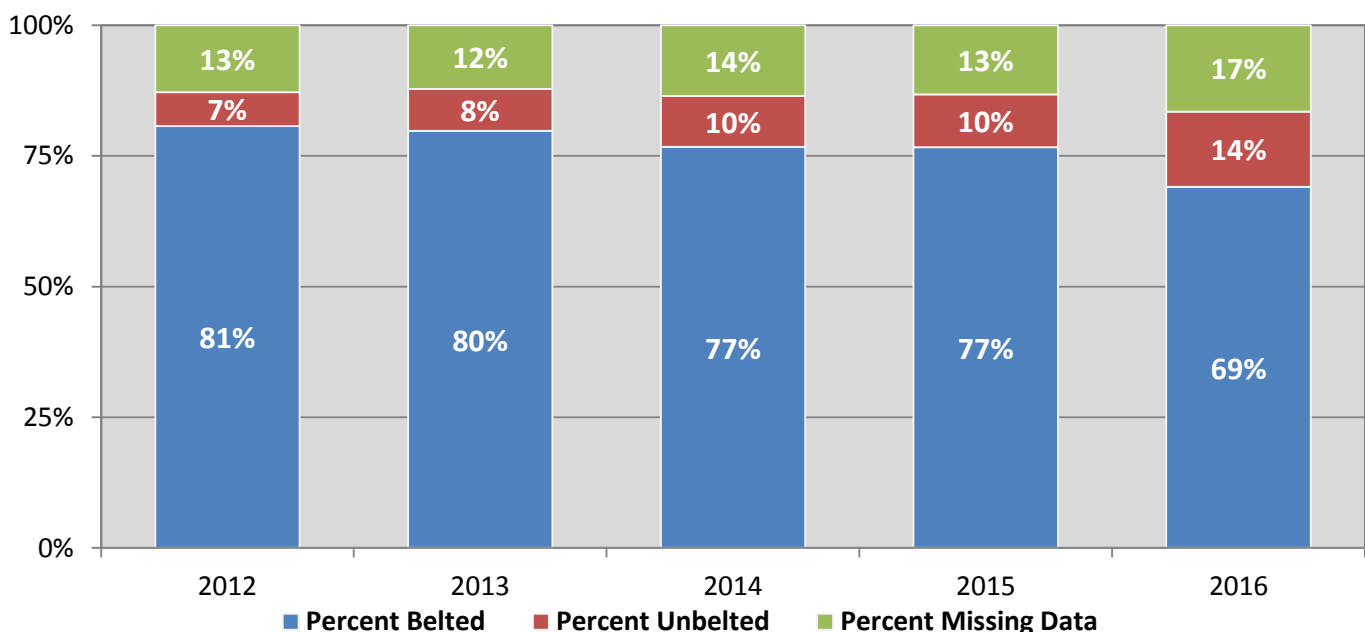
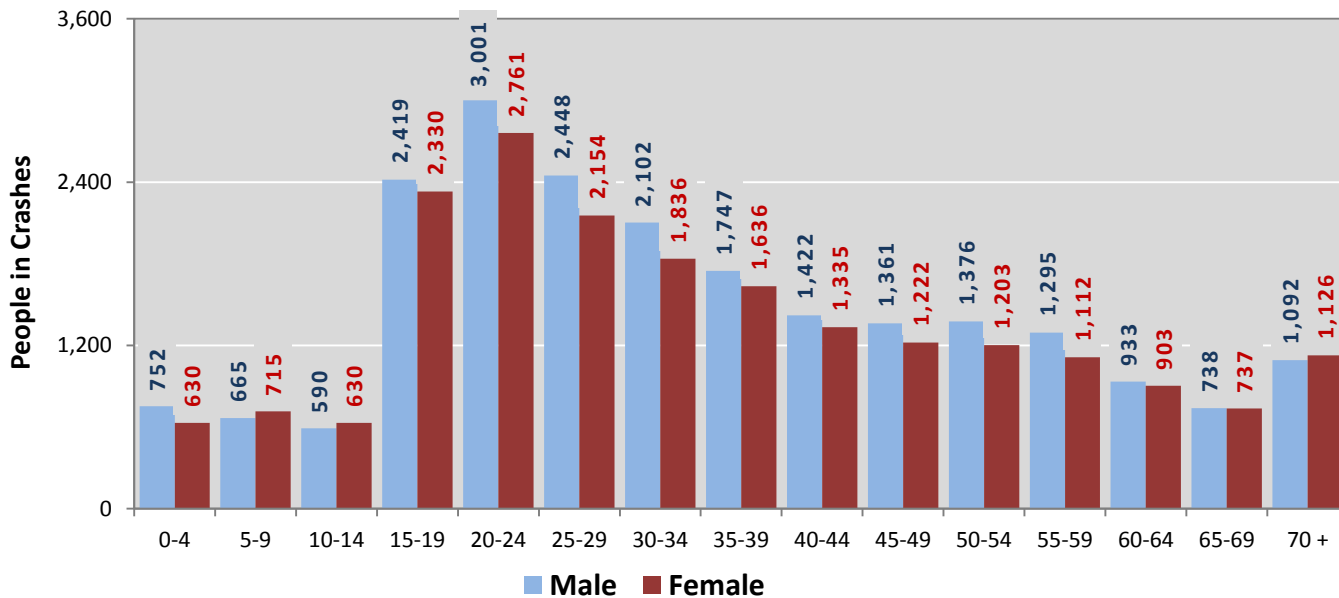
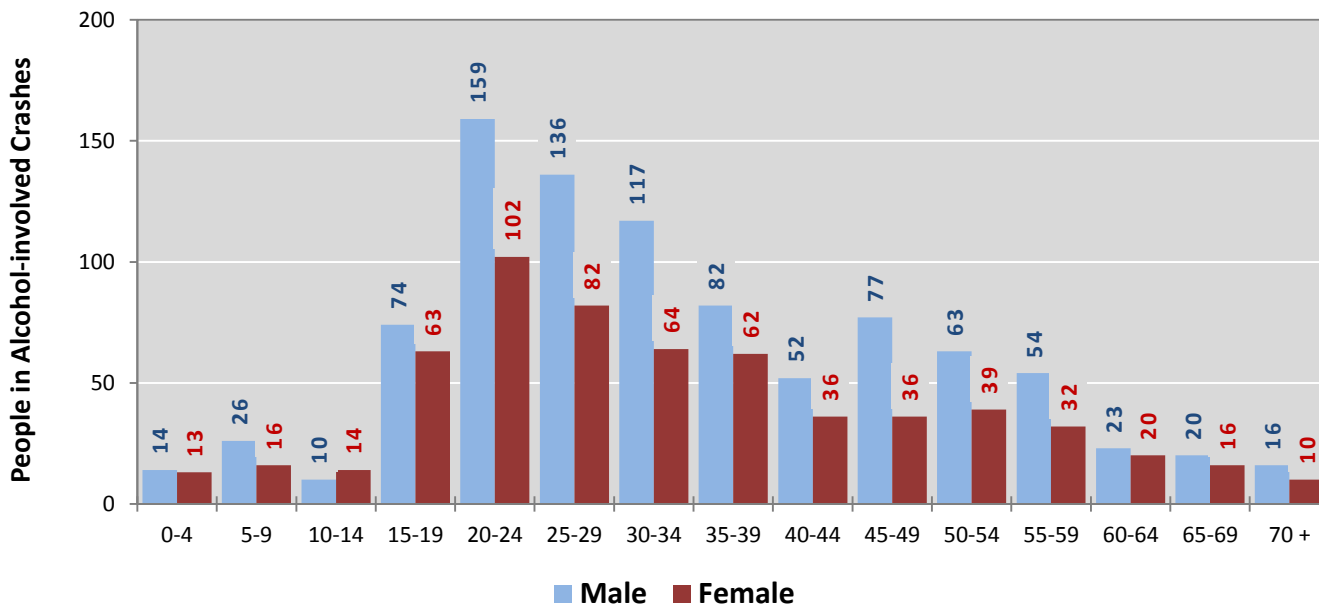


Figure 9: People in Crashes by Age Group and Sex in Bernalillo County, 2016



* In 2016, Bernalillo County had 8480 people in crashes for which age or sex data were missing.

Figure 10: People in Alcohol-involved Crashes by Age Group and Sex in Bernalillo County, 2016



* In 2016, Bernalillo County had 172 people in alcohol-involved crashes for which age or sex data were missing.

Table 18: Pedestrians and Pedalcyclists in Crashes by Age Group in Bernalillo County, 2012-2016

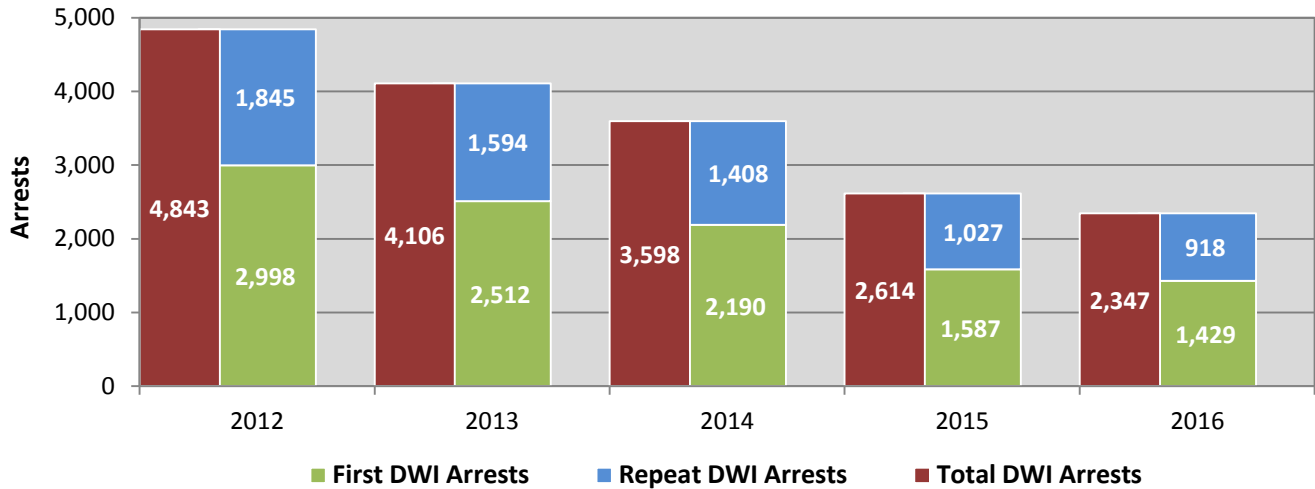
Age Groups	Pedestrians and Pedalcyclists ¹ in Crashes					5-Year Total People
	2012	2013	2014	2015	2016	
0-4	9	5	4	4	6	28
5-9	10	8	9	12	13	52
10-14	19	19	30	37	24	129
15-19	40	47	45	36	46	214
20-24	49	42	46	51	54	242
25-29	36	42	47	65	53	243
30-34	36	31	34	37	43	181
35-39	24	29	21	32	37	143
40-44	32	27	37	44	43	183
45-49	44	26	34	26	38	168
50-54	37	26	32	38	46	179
55-59	32	24	39	43	33	171
60-64	25	17	30	20	30	122
65-69	7	7	16	16	17	63
70 +	14	15	14	24	17	84
Missing Data	20	43	44	34	33	174
Total People	434	408	482	519	533	2,376

Table 19: Pedestrians and Pedalcyclists in Crashes by Alcohol Involvement and Severity of Injuries in Bernalillo County, 2016

Alcohol Involvement	Pedestrians and Pedalcyclists ¹ in Crashes					Total People
	Fatalities (Class K)	Suspected Serious Injuries (Class A)	Suspected Minor Injuries (Class B)	Possible Injuries (Class C)	No Apparent Injury (Class O)	
Total Pedalcyclists	1	16	85	67	28	197
Involved	1	0	3	1	0	5
Not Involved	0	16	82	66	28	192
Total Pedestrians	34	55	110	113	24	336
Involved	21	14	21	16	2	74
Not Involved	13	41	89	97	22	262
Total People	35	71	195	180	52	533

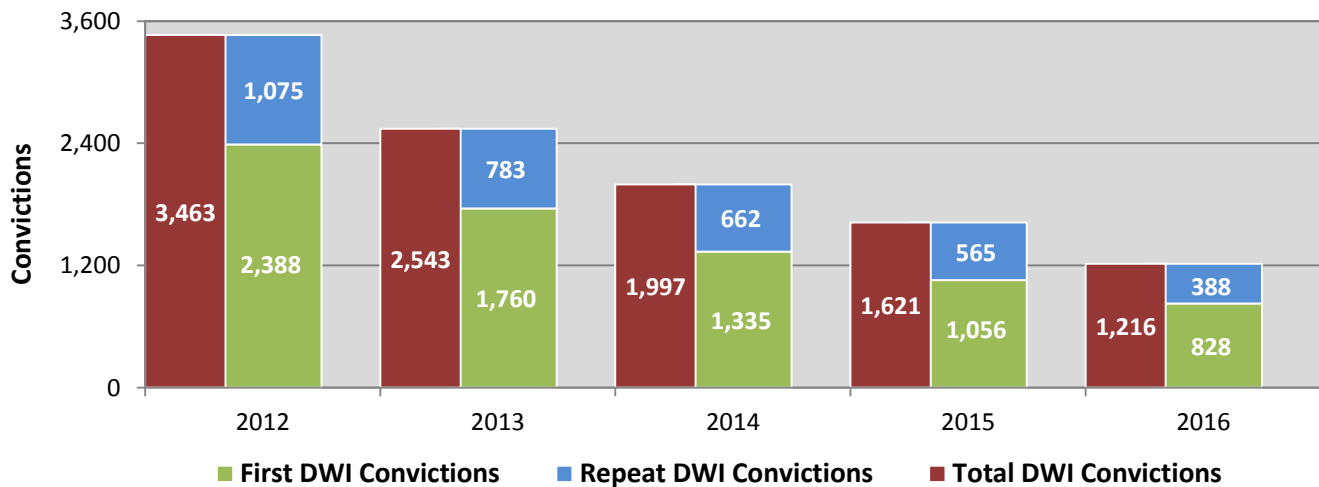
¹ Pedestrians and pedalcyclists are counted as non-motorized vehicles, when involved in a crash with a motor vehicle.

**Figure 11: DWI Arrests in Bernalillo County,
Showing First and Repeat DWI Arrests, 2012-2016**



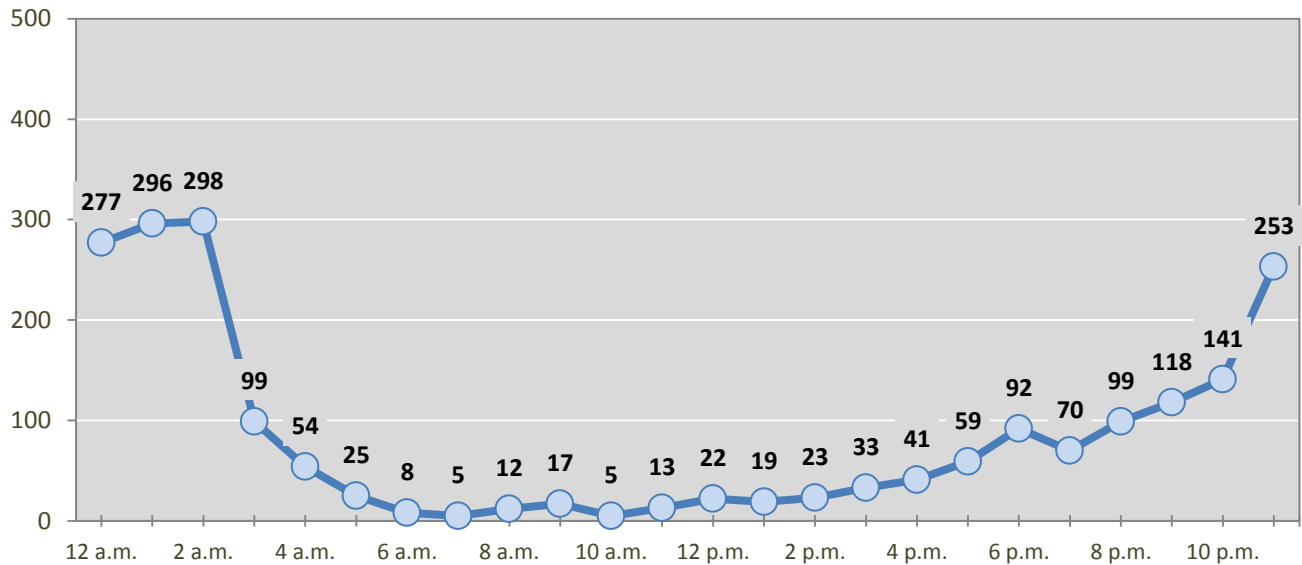
*Values are based upon the year of the arrest.

**Figure 12: DWI Convictions in Bernalillo County,
Showing First and Repeat DWI Convictions, 2012-2016**



*Values are based upon the year of the conviction.

Figure 13: DWI Arrests by Hour in Bernalillo County, 2016



* In 2016, Bernalillo County had 268 arrests for which hour data were missing.

Table 20: DWI Arrests by Day of Week in Bernalillo County, 2012-2016

Day of Week	Year					5-Year Average
	2012	2013	2014	2015	2016	
Sunday	973	777	663	481	413	661
Monday	252	228	207	150	169	201
Tuesday	313	245	248	185	142	227
Wednesday	469	361	306	275	245	331
Thursday	671	589	482	379	303	485
Friday	941	841	781	541	512	723
Saturday	1,224	1,065	911	603	563	873
Total Arrests	4,843	4,106	3,598	2,614	2,347	3,502

Table 21: Driver First DWI Arrests by Age Group in Bernalillo County, 2012-2016

Age Groups	Driver First DWI Arrests ¹				
	2012	2013	2014	2015	2016
15-19	223	127	113	90	86
20-24	975	793	678	487	439
25-29	598	543	454	333	320
30-34	415	343	302	227	174
35-39	235	222	187	128	121
40-44	175	155	136	78	79
45-49	132	126	97	90	65
50-54	104	88	99	49	50
55-59	66	51	56	35	38
60-64	35	28	27	18	16
65-69	20	17	10	15	10
70 +	12	13	10	4	3
Missing Data	8	6	21	33	28
Total Drivers	2,998	2,512	2,190	1,587	1,429

¹Values are based upon the year of the arrest.

Table 22: Driver Repeat DWI Arrests by Age Group in Bernalillo County, 2012-2016

Age Groups	Driver Repeat DWI Arrests ¹				
	2012	2013	2014	2015	2016
15-19	12	12	4	3	4
20-24	215	194	150	110	75
25-29	363	290	269	209	164
30-34	310	316	254	203	179
35-39	253	203	195	140	132
40-44	218	180	145	108	97
45-49	197	139	137	91	93
50-54	130	134	125	76	83
55-59	83	58	66	38	53
60-64	39	40	37	28	18
65-69	18	14	10	14	10
70 +	7	10	8	5	10
Missing Data	0	4	8	2	0
Total Drivers	1,845	1,594	1,408	1,027	918

¹Values are based upon the year of the arrest.

Table 23: Driver First DWI Convictions by Age Group in Bernalillo County, 2012-2016

Age Groups	Driver First DWI Convictions ¹				
	2012	2013	2014	2015	2016
15-19	137	73	43	57	34
20-24	780	563	418	332	243
25-29	519	378	333	230	182
30-34	319	244	191	154	108
35-39	203	152	106	92	84
40-44	133	124	72	53	46
45-49	105	85	54	52	44
50-54	77	60	54	36	27
55-59	58	37	27	18	22
60-64	29	26	19	10	14
65-69	15	11	9	4	8
70 +	9	4	5	4	2
Missing Data	4	3	4	14	14
Total Drivers	2,388	1,760	1,335	1,056	828

¹ Values are based upon the year of the conviction.

Table 24: Driver Repeat DWI Convictions by Age Group in Bernalillo County, 2012-2016

Age Groups	Driver Repeat DWI Convictions ¹				
	2012	2013	2014	2015	2016
15-19	5	6	4	1	2
20-24	116	76	62	49	28
25-29	197	154	110	104	69
30-34	169	126	134	111	86
35-39	153	110	85	68	53
40-44	137	99	78	67	37
45-49	154	86	62	65	40
50-54	74	59	77	52	32
55-59	33	35	30	28	26
60-64	21	20	14	10	8
65-69	8	9	3	6	3
70 +	6	2	3	1	4
Missing Data	2	1	0	3	0
Total Drivers	1,075	783	662	565	388

¹ Values are based upon the year of the conviction.

Table 25: Court Disposition of DWI Arrests for the State and Bernalillo County, 2016

Court Disposition of DWI Arrest ¹	Bernalillo County	Statewide	Percent of Statewide
Total DWI Arrests	2,347	10,344	23%
DWI Arrests Resulting in Convictions	992	5,541	18%
DWI Arrests Resulting in Dismissals ²	697	1,512	46%
DWI Arrests Awaiting Disposition	658	3,291	20%

¹ These are the number of DWI arrests in 2016 and whether the case resulted in a conviction or dismissal, or is still awaiting court disposition, as reported in the NM MVD Citation Tracking System (CTS) as of December 2017.

² For this table, a very small number of "not guilty" rulings may be included in the category Dismissals.

Table 26: Average Number of Days from Date of DWI Arrest to Date of Court Disposition for the State and Bernalillo County, 2016

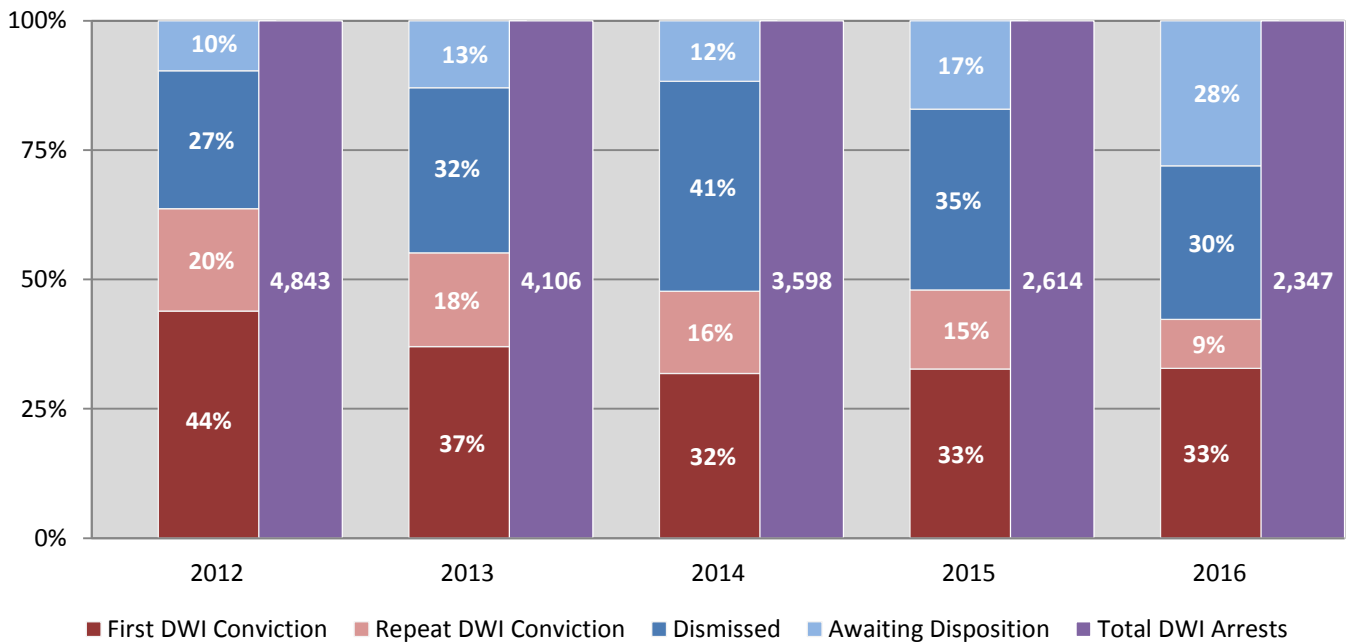
Court Disposition	Average Number of Days		Deviation from Statewide Average
	Bernalillo County	Statewide	
DWI Conviction	211	157	54
DWI Dismissal	184	179	5

Table 27: Court Disposition of DWI Arrests in Bernalillo County, 2012-2016

Year of DWI Arrest ¹	Court Disposition				Total DWI Arrests
	First DWI Conviction	Repeat DWI Conviction	Dismissed	Awaiting Disposition	
2012	2,124	959	1,290	470	4,843
2013	1,520	745	1,308	533	4,106
2014	1,146	571	1,459	422	3,598
2015	855	399	913	447	2,614
2016	770	222	697	658	2,347

¹ Values are based upon the year of the arrest.

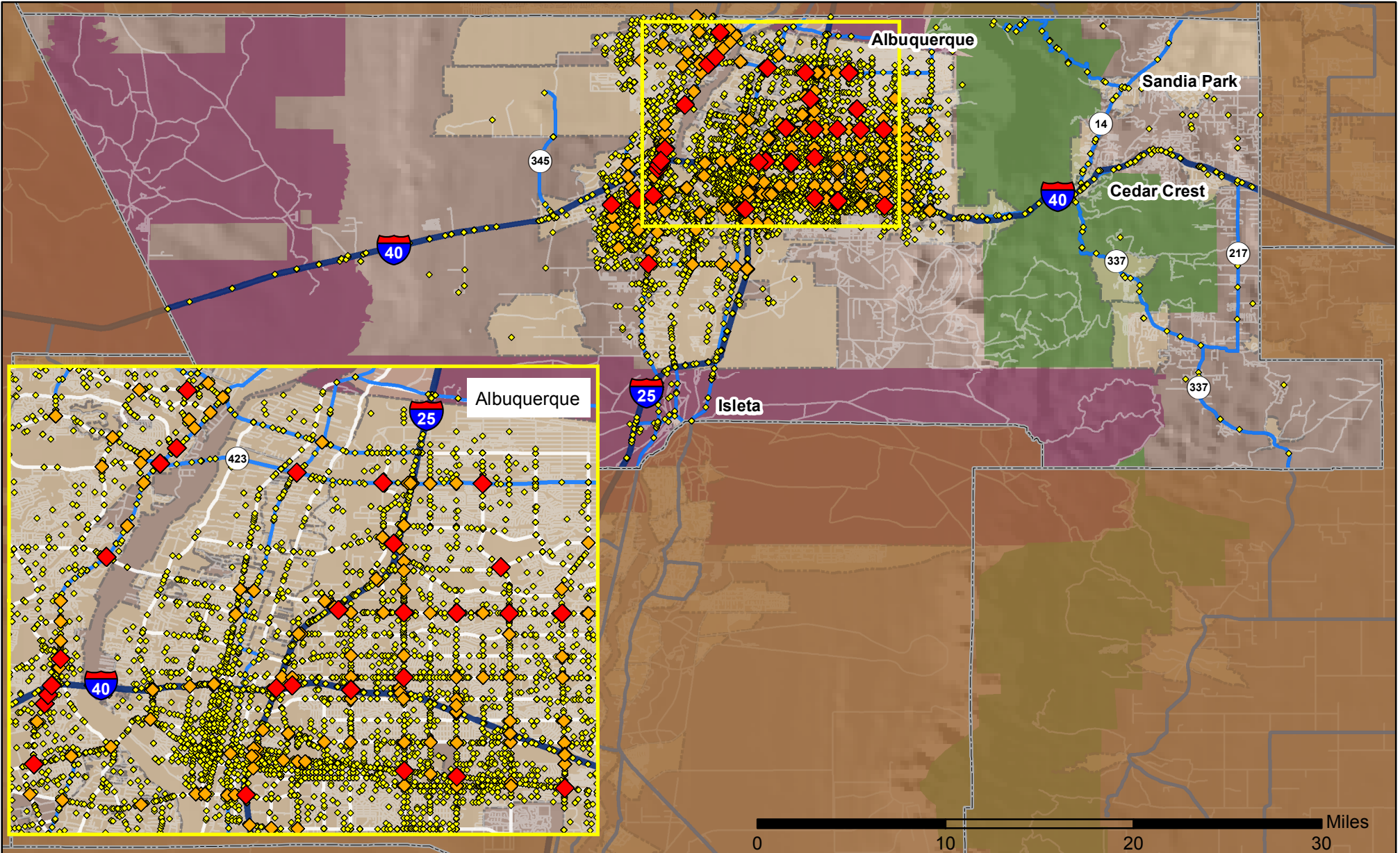
Figure 14: Court Dispositions by Percentage of DWI Arrests in Bernalillo County, 2012-2016



*Table 27 contains the values used to calculate percentages shown in Figure 14.

Crashes in Bernalillo County, New Mexico, 2016

Map created by the Traffic Research Unit, Geospatial & Population Studies at UNM



Legend

Data Source: NMDOT Crash File 2016
<http://tru.unm.edu> CO#5801 tru@unm.edu

- Forest & Wildlife Areas
- Reservations & Pueblos
- County Boundaries
- City Boundaries

- Interstate Highways
- U.S. Highways
- State Highways
- Streets & Roadways

Crashes 2016

- 1 - 20 Crashes
- 21 - 50 Crashes
- 51 - 158 Crashes