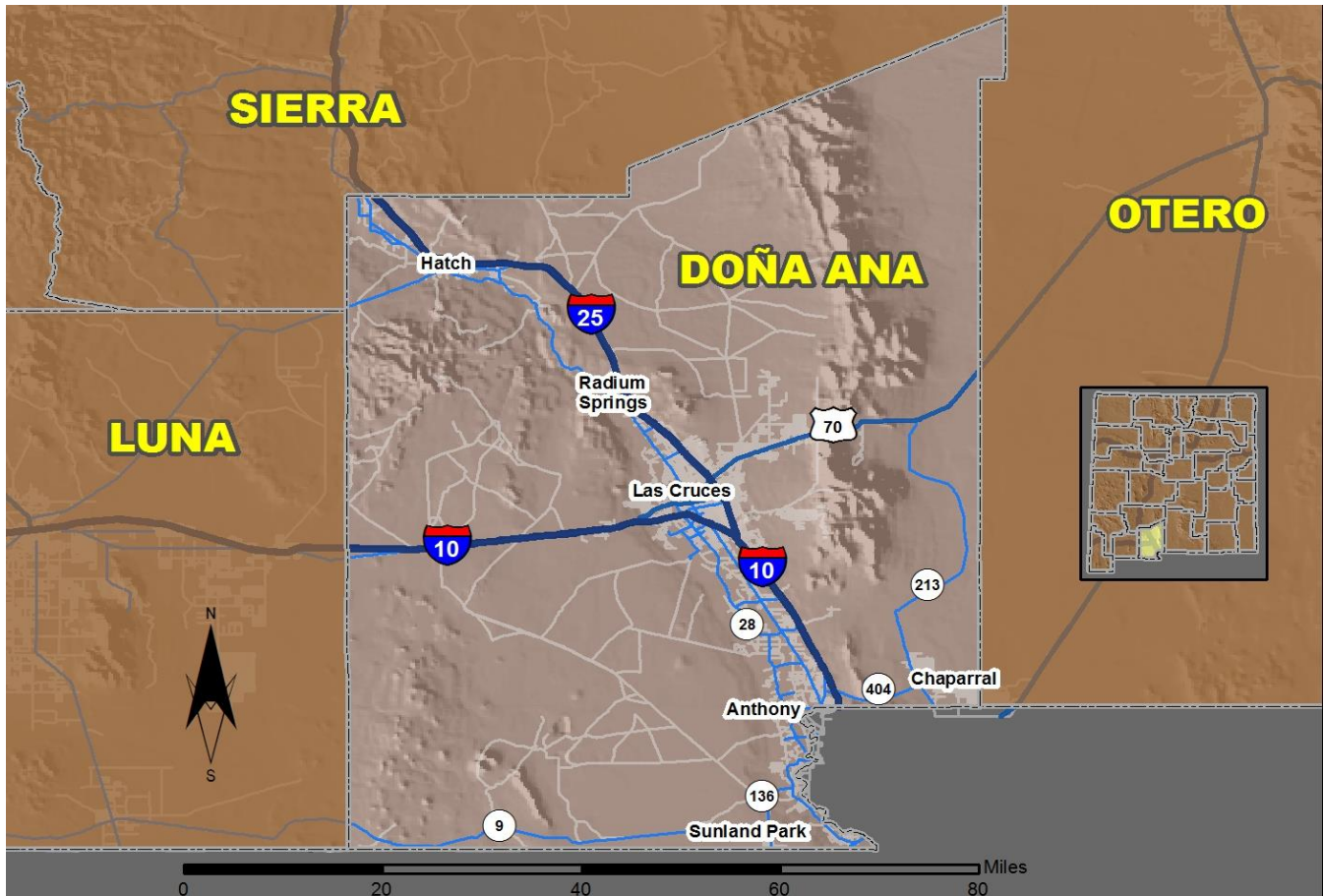


2016 Community Report

Doña Ana County



Produced for the New Mexico Department of Transportation,
Traffic Safety Division, Traffic Records Bureau,
Under Contract 5801 by the University of New Mexico,
Geospatial and Population Studies, Traffic Research Unit

Distributed in compliance with New Mexico Statute 66-7-214
as a reference source regarding New Mexico traffic crashes

For the purposes of this report, data are compiled by the University of New Mexico, Geospatial and Population Studies, Traffic Research Unit (TRU), on behalf of the New Mexico Department of Transportation (NMDOT). Data in this report may differ from that in other data sources, such as the Federal Fatality Analysis Reporting System (FARS), due to the timing of publications and rules for how data are compiled and maintained in Federal vs. State databases. If you have questions regarding this report, please contact the Traffic Safety Division at 505-827-0427.

<http://tru.unm.edu/Crash-Reports/Community-Reports/>

Definitions

Aggravated DWI – A driver arrested for 1) driving with a BAC of 0.16 or higher, 2) driving under the influence of alcohol or drugs and causing bodily injury to a human being as a result, or 3) driving under the influence of alcohol or drugs and refusing to submit to a BAC test at the time of arrest for DWI.

Alcohol-involved Crash – A crash for which the Uniform Crash Report indicated that 1) a DWI citation was issued, 2) alcohol was a contributing factor, or 3) a person in control of a vehicle (including a pedestrian or pedalcyclist) was suspected of being under the influence of alcohol.

Alcohol-involved Driver – A person in control of a vehicle who was cited for DWI or indicated on the Uniform Crash Report as being either suspected or determined by testing to be under the influence of alcohol. There can be multiple alcohol-involved drivers in a single alcohol-involved crash.

Crash – A reported incident on a public roadway involving one or more motor vehicles that resulted in death, personal injury, or at least \$500 in property damage. Crashes on private property (such as a parking lot) are not included.

DWI Arrest (Citation) – In this report, a DWI arrest (a.k.a. a DWI citation) is a driver arrested for either DWI or aggravated DWI. New Mexico’s legal limit for presumption of driving while intoxicated (DWI) is 0.08 for non-commercial drivers older than 21 years of age, 0.04 for commercial vehicle drivers, and 0.02 for drivers younger than 21 years of age.

DWI Conviction – A driver convicted of driving under the intoxicating influence of alcohol, narcotics, or pathogenic drugs, including aggravated DWI.

Fatal Crash – A crash in which at least one person was killed. More than one person can be killed in a single fatal crash.

Fatalities – The number of people killed in a crash. The terms “killed” and “deaths” are synonymous with “fatalities.” A fatality is crash-related if it occurs at the time of the crash or if the person(s) involved in the crash dies within 30 days.

Injury Crash – A reported crash in which at least one person was injured. Injury crashes involve at least one suspected serious injury (Class A), suspected minor injury (Class B), or possible injury (Class C). Fatal crashes are not included.

Missing Data – An indication that the applicable field on the UCR form was left blank or contained an invalid code. Starting with crashes that occurred in 2012, improvements in the identification of missing data in the NMDOT crash database led to an increase in the reported amount of missing data.

Pedalcyclist – A person riding a mechanism of transport that is powered solely by pedals (a.k.a. bicyclist).

Pedestrian – A person on foot, walking, running, jogging, hiking, sitting or lying down who is involved in a motor vehicle traffic crash.

Sources

Crash Data – New Mexico Department of Transportation, Traffic Safety Division, Traffic Records Bureau, Traffic Crash Database, as of the report date below. Crash data are compiled using NMDOT Uniform Crash Reports (UCR), submitted by law enforcement agencies in the state, for any incident on a public roadway involving one or more motor vehicles that resulted in death, injury, or at least \$500 in property damage. These reports are processed by the NMDOT Traffic Records Bureau and analyzed by the University of New Mexico, Geospatial and Population Studies, Traffic Research Unit (TRU).

DWI Citation Tracking System (CTS) – New Mexico Taxation and Revenue Department (NM TRD), Motor Vehicle Division (MVD), DWI Citation Tracking System (CTS), as of December 2017. Repeat offenders are identified by the combination of account key, arrest date, and citation number. County data are based upon the county where the arrest took place. City data are based upon the city where the offender resides.

Urban Areas – New Mexico Department of Transportation, Asset Management and Planning, 2010 U.S. Census Urbanized Area Boundaries, NMDOT-Adjusted, and U.S. Census Urban Clusters, August 21, 2013. In crashes before 2013, “urban” was defined as a town or city with a population of at least 2,500 people.

Table 1: Total Crashes and Alcohol-involved Crashes by Crash Severity in Doña Ana County, 2007-2016

Year	Total Crashes				Alcohol-involved Crashes			
	Fatal	Injury	Property Damage Only	Total	Fatal	Injury	Property Damage Only	Total
2007	22	1,344	2,758	4,124	5	89	105	199
2008	12	1,335	2,648	3,995	6	99	110	215
2009	24	1,297	2,816	4,137	13	118	129	260
2010	24	1,396	2,719	4,139	11	96	105	212
2011	14	1,343	2,820	4,177	4	109	122	235
2012	22	1,125	2,845	3,992	6	78	103	187
2013	14	1,150	2,649	3,813	6	88	93	187
2014	18	1,142	2,616	3,776	10	83	98	191
2015	17	1,272	2,978	4,267	5	79	111	195
2016	21	1,411	2,900	4,332	7	66	101	174

Figure 1: Alcohol-involved Fatal and Injury Crashes Compared with Non-alcohol-involved Fatal and Injury Crashes in Doña Ana County, 2007-2016

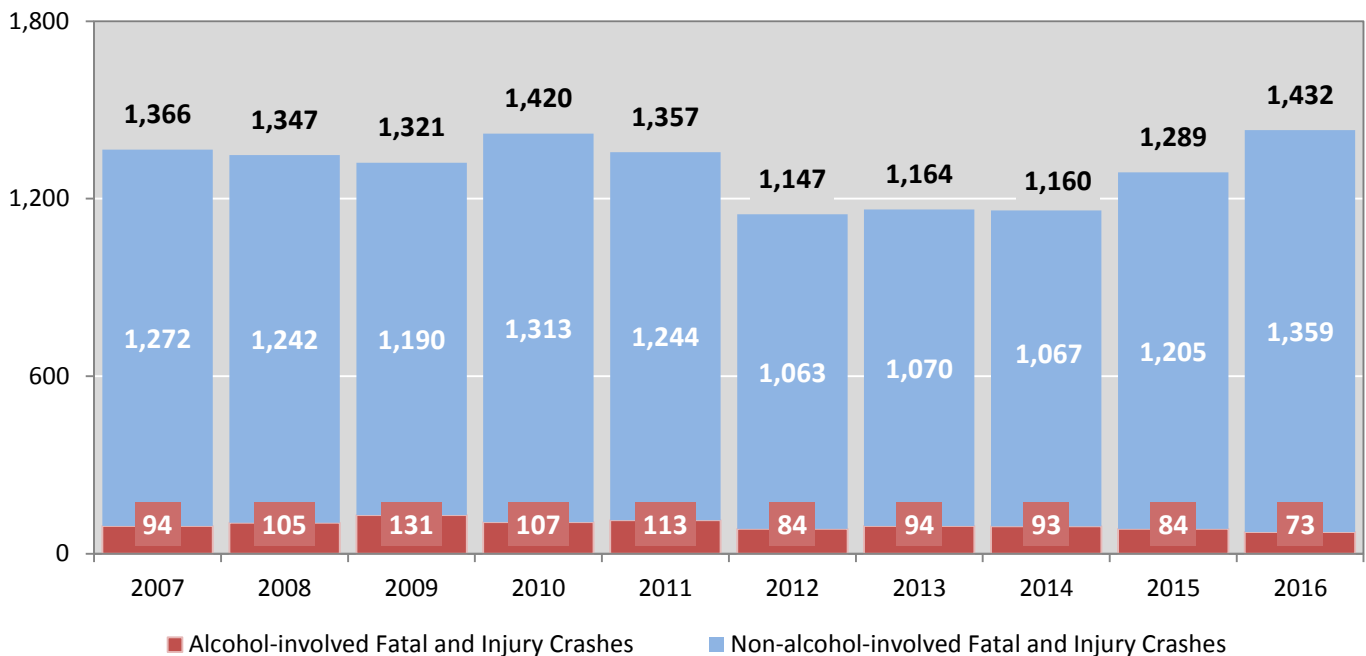


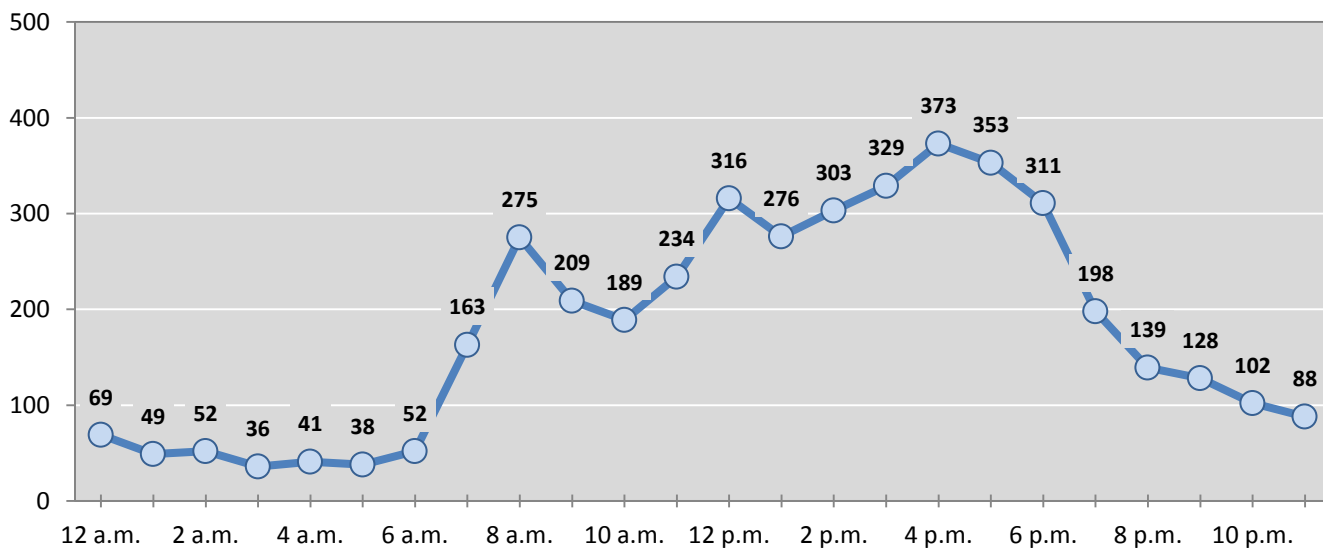
Table 2: Crashes by Month in Doña Ana County, 2012-2016

Month	Crashes					5-Year Average
	2012	2013	2014	2015	2016	
January	316	303	289	366	345	324
February	284	243	277	347	335	297
March	339	340	296	316	374	333
April	359	322	334	346	377	348
May	300	305	323	339	368	327
June	299	256	326	277	304	292
July	306	283	283	320	309	300
August	338	326	330	369	400	353
September	365	391	347	361	360	365
October	423	378	365	431	407	401
November	326	367	259	360	354	333
December	337	299	347	435	399	363
Total Crashes	3,992	3,813	3,776	4,267	4,332	4,036

Table 3: Alcohol-involved Crashes by Month in Doña Ana County, 2012-2016

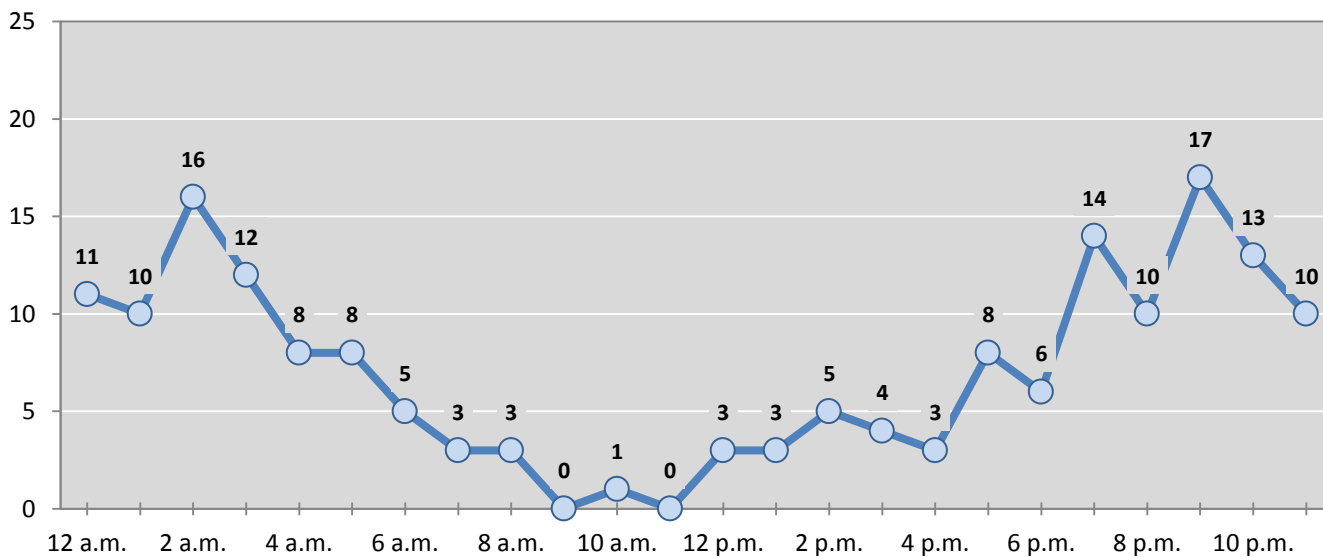
Month	Alcohol-involved Crashes					5-Year Average
	2012	2013	2014	2015	2016	
January	12	16	13	26	17	17
February	7	13	11	21	13	13
March	17	19	23	14	16	18
April	19	17	24	9	13	16
May	17	13	8	19	8	13
June	15	16	25	10	20	17
July	20	17	16	7	12	14
August	16	14	13	17	16	15
September	22	14	12	14	13	15
October	17	18	20	24	20	20
November	11	16	12	13	13	13
December	14	14	14	21	13	15
Total Crashes	187	187	191	195	174	187

Figure 2: Crashes by Hour in Doña Ana County, 2016



* In 2016, Doña Ana County had 9 crashes for which hour data were missing.

Figure 3: Alcohol-involved Crashes by Hour in Doña Ana County, 2016



* In 2016, Doña Ana County had 1 alcohol-involved crashes for which hour data were missing.

Table 4: Alcohol-involved Crashes by Day of Week in Doña Ana County, 2012-2016

Day of Week	Alcohol-involved Crashes					5-Year Average
	2012	2013	2014	2015	2016	
Sunday	38	42	32	43	30	37
Monday	9	19	14	17	17	15
Tuesday	19	18	16	11	15	16
Wednesday	17	15	27	25	17	20
Thursday	12	18	22	19	15	17
Friday	35	31	33	37	35	34
Saturday	57	44	47	43	45	47
Total Crashes	187	187	191	195	174	187

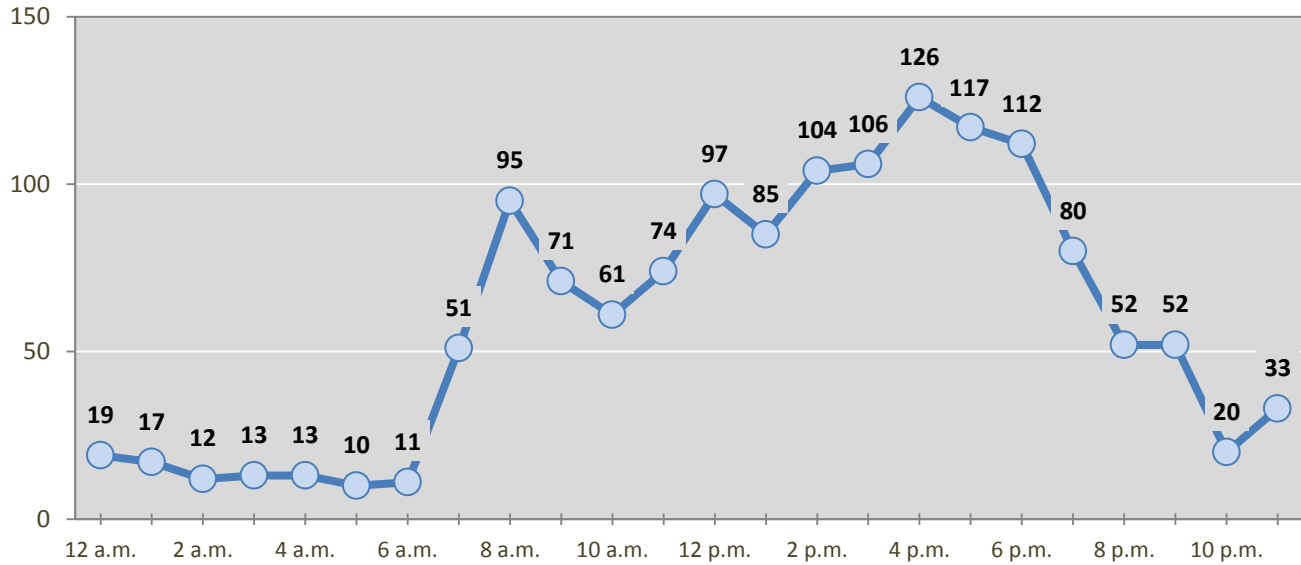
Table 5: Fatal and Injury Crashes by Day of Week in Doña Ana County, 2012-2016

Day of Week	Fatal and Injury Crashes					5-Year Average
	2012	2013	2014	2015	2016	
Sunday	107	121	115	111	141	119
Monday	180	164	197	203	195	188
Tuesday	149	207	161	178	230	185
Wednesday	174	170	192	188	242	193
Thursday	175	165	166	212	231	190
Friday	203	204	198	243	224	214
Saturday	159	133	131	154	169	149
Total Crashes	1,147	1,164	1,160	1,289	1,432	1,238

Table 6: Pedestrian and Pedalcyclist Crashes by Day of Week in Doña Ana County, 2012-2016

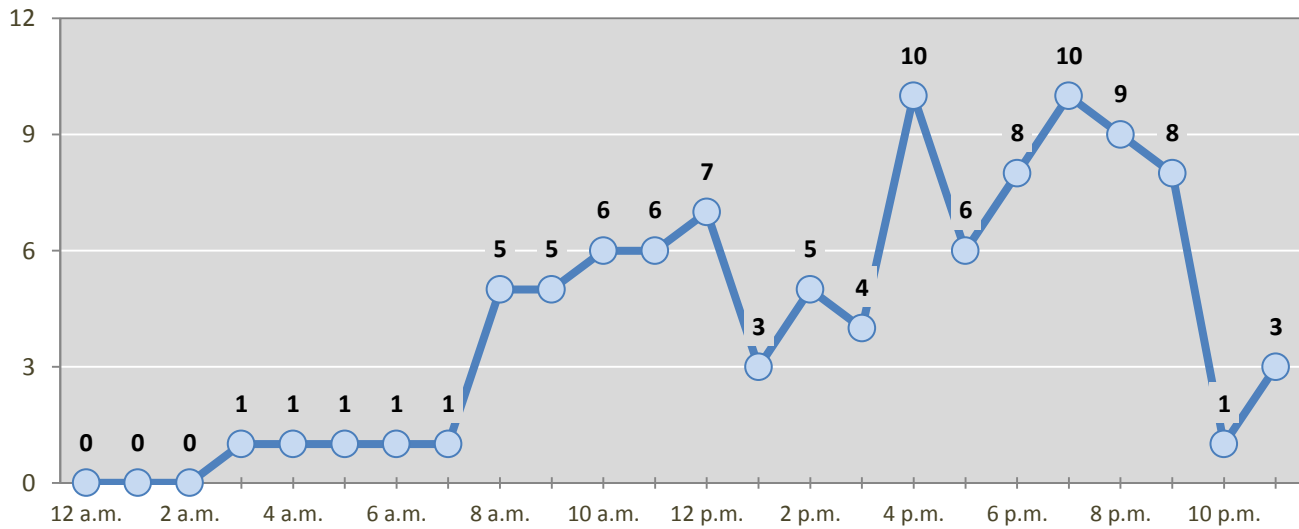
Day of Week	Pedestrian and Pedalcyclist Crashes					5-Year Average
	2012	2013	2014	2015	2016	
Sunday	3	5	9	4	13	7
Monday	10	14	12	18	14	14
Tuesday	11	14	12	17	15	14
Wednesday	10	10	15	13	21	14
Thursday	8	11	11	9	17	11
Friday	8	21	11	10	12	12
Saturday	9	8	9	12	9	9
Total Crashes	59	83	79	83	101	81

Figure 4: Fatal and Injury Crashes by Hour in Doña Ana County, 2016



* In 2016, Doña Ana County had 1 crashes for which hour data were missing.

Figure 5: Pedestrian and Pedalcyclist Crashes by Hour in Doña Ana County, 2016



* In 2016, Doña Ana County had 0 crashes for which hour data were missing.

Table 7: Severity of Injuries to People in Crashes by Rural and Urban Location in Doña Ana County, 2016

Urban and Rural Locations by Alcohol-involvement	People in Crashes by Severity of Injuries					Total People
	Fatalities (Class K)	Suspected Serious Injuries (Class A)	Suspected Minor Injuries (Class B)	Possible Injuries (Class C)	No Apparent Injuries (Class O)	
People in Alcohol-involved Crashes	10	10	39	46	273	378
Urban	10	9	27	41	238	325
Rural Non-Interstate	0	1	11	3	25	40
Rural Interstate	0	0	1	2	10	13
People in Crashes	24	119	471	1,342	9,326	11,282
Urban	19	110	408	1,265	8,802	10,604
Rural Non-Interstate	3	6	47	47	359	462
Rural Interstate	2	3	16	30	165	216
Percent in Alcohol-involved Crashes	42%	8%	8%	3%	3%	3%

Table 8: Total Crashes by Roadway System and Crash Severity in Doña Ana County, 2012-2016

Crash Severity by System	Crashes by Year					5-Year Average
	2012	2013	2014	2015	2016	
Total Rural Interstate	125	159	123	120	111	128
Fatal Crash	6	3	1	1	2	3
Injury Crash	39	47	39	39	35	40
Property Damage Only Crash	80	109	83	80	74	85
Total Rural Non-Interstate	393	334	224	193	239	277
Fatal Crash	10	6	5	4	3	6
Injury Crash	138	107	82	60	73	92
Property Damage Only Crash	245	221	137	129	163	179
Total Urban	3,474	3,320	3,429	3,954	3,982	3,631
Fatal Crash	6	5	12	12	16	10
Injury Crash	948	996	1,021	1,173	1,303	1,088
Property Damage Only Crash	2,520	2,319	2,396	2,769	2,663	2,533

Table 9: Total Crashes by Crash Classification in Doña Ana County, 2012-2016

Crash Classification	Total Crashes by Year					5-Year Average
	2012	2013	2014	2015	2016	
Animal	26	22	16	37	33	27
Fixed Object	378	432	379	394	448	406
Other (Non-Collision)	89	51	45	41	75	60
Other (Object)	69	79	103	80	81	82
Other Vehicle	2,878	2,716	2,713	3,188	3,221	2,943
Overturn/Rollover	182	168	149	61	108	134
Parked Vehicle	239	194	208	221	175	207
Pedalcyclist	31	34	38	47	46	39
Pedestrian	29	50	46	35	55	43
Railroad Train	2	2	3	3	0	2
Rollover	0	0	6	106	53	33
Vehicle on Other Road	8	11	15	7	5	9
Missing Data	61	54	55	47	32	50
Total Crashes	3,992	3,813	3,776	4,267	4,332	4,036

Table 10: Vehicles in Crashes by Vehicle Type in Doña Ana County, 2012-2016

Vehicle Type ¹	Vehicles in Crashes by Vehicle Type					5-Year Average
	2012	2013	2014	2015	2016	
Bus	26	18	17	25	21	21
Motorcycle	128	164	128	131	114	133
Passenger	3,965	3,655	3,974	4,648	4,798	4,208
Pedalcyclist	33	34	38	48	49	40
Pedestrian	26	52	44	38	57	43
Pickup	1,352	1,171	1,042	1,207	1,285	1,211
Semi	221	194	235	211	227	218
Van/SUV/4WD	1,116	1,143	1,085	1,226	1,323	1,179
Other Vehicle	96	88	43	117	32	75
Missing Data	371	442	371	432	266	376
Total Vehicles	7,334	6,961	6,977	8,083	8,172	7,505

¹ Pedestrians and pedalcyclists are counted as non-motorized vehicles, when involved in a crash with a motor vehicle. See Page 17 for data on drivers of non-motorized vehicles in crashes (i.e. pedestrians and pedalcyclists).

Table 11: Motor Vehicle Drivers in Crashes by Vehicle Type and Age Group in Doña Ana County, 2016

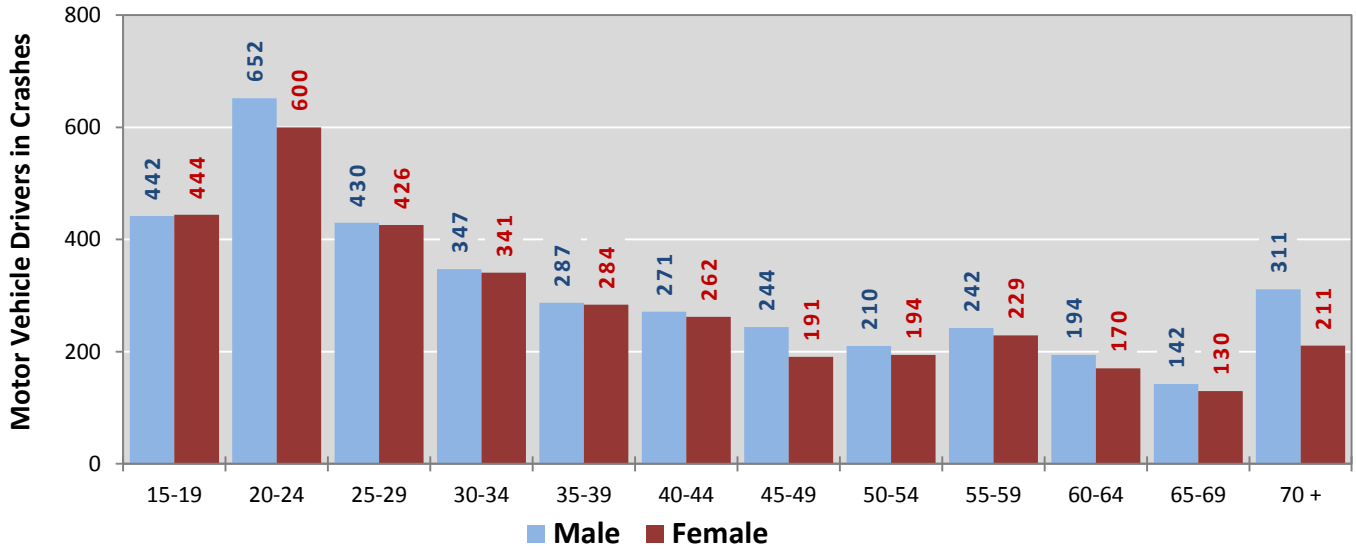
Age Groups	Motor Vehicle ¹ Drivers by Vehicle Type and Age Group								Total Drivers
	Bus	Motor-cycle	Passenger	Pickup	Semi	Van 4WD SUV	Other Vehicle	Missing Data	
15-19	0	9	663	117	5	88	3	2	887
20-24	0	26	896	158	17	150	2	5	1,254
25-29	1	10	577	122	15	119	5	8	857
30-34	0	10	404	112	23	132	4	4	689
35-39	2	14	314	78	22	136	2	4	572
40-44	2	7	280	93	32	113	4	2	533
45-49	1	8	230	90	29	76	1	2	437
50-54	5	5	208	89	20	73	1	3	404
55-59	3	8	232	96	25	105	1	2	472
60-64	5	5	196	69	16	72	2	0	365
65-69	0	4	157	48	2	57	1	3	272
70 +	0	2	308	90	5	110	4	3	522
Missing Data	2	6	333	123	16	92	2	228	802
Total Drivers	21	114	4,798	1,285	227	1,323	32	266	8,066

Table 12: Alcohol-involved Motor Vehicle Drivers in Crashes by Vehicle Type and Age Group in Doña Ana County, 2016

Age Groups	Alcohol-involved Motor Vehicle ¹ Drivers by Vehicle Type and Age Group								Total Drivers
	Bus	Motor-cycle	Passenger	Pickup	Semi	Van 4WD SUV	Other Vehicle	Missing Data	
15-19	0	0	13	1	0	0	0	0	14
20-24	0	2	28	9	1	1	0	0	41
25-29	0	1	24	3	1	4	0	0	33
30-34	0	0	14	2	0	2	0	1	19
35-39	0	2	9	2	1	1	0	0	15
40-44	0	1	5	2	0	0	0	0	8
45-49	0	2	4	1	0	4	0	0	11
50-54	0	0	2	1	0	1	0	0	4
55-59	0	0	4	2	0	3	0	0	9
60-64	0	0	2	2	0	3	0	0	7
65-69	0	0	0	1	0	0	0	0	1
70 +	0	0	1	0	0	0	0	0	1
Missing Data	0	0	5	1	0	2	0	0	8
Total Drivers	0	8	111	27	3	21	0	1	171

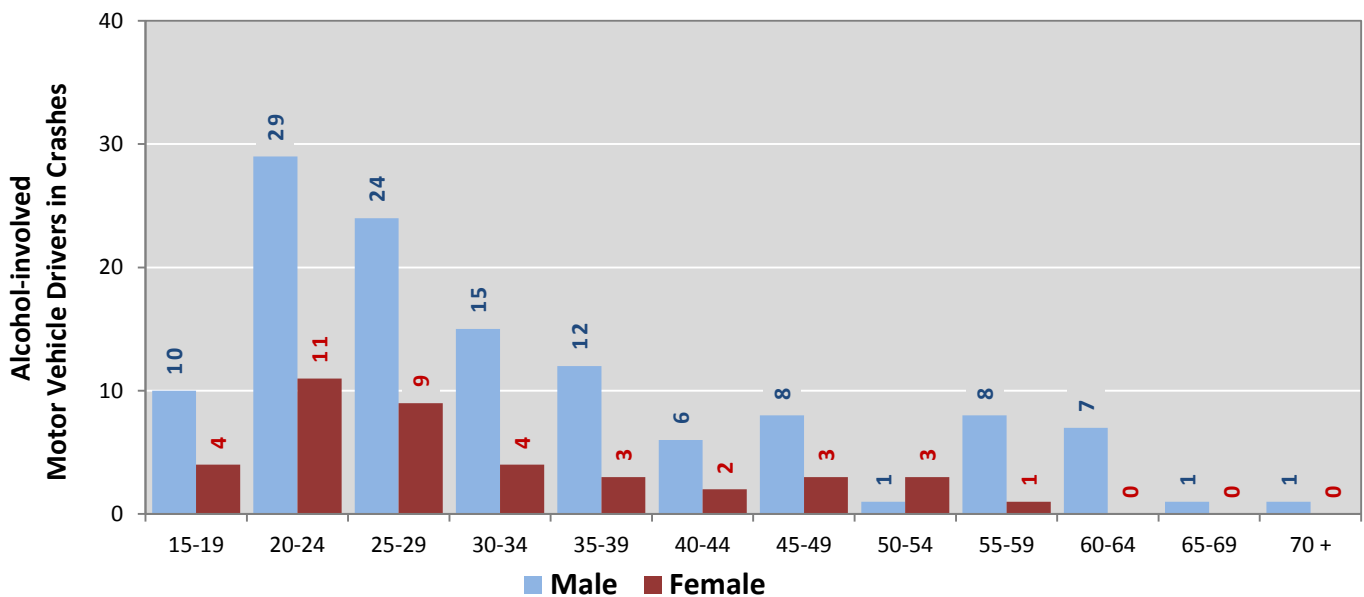
¹ See Page 17 for data on drivers of non-motorized vehicles in crashes (i.e. pedestrians and pedalcyclists).

Figure 6: Motor Vehicle Drivers in Crashes by Age Group and Sex in Doña Ana County, 2016



* In 2016, Doña Ana County had 812 drivers in crashes for which age or sex data were missing.

Figure 7: Alcohol-involved Motor Vehicle Drivers in Crashes by Age Group and Sex in Doña Ana County, 2016



* In 2016, Doña Ana County had 9 drivers in crashes for which age or sex data were missing.

Table 13: Alcohol-involved Motor Vehicle Drivers Under 21 (Ages 15-20) in Crashes in Doña Ana County, 2012-2016

Age ¹	Year					5-Year Total
	2012	2013	2014	2015	2016	
15	1	0	0	0	0	1
16	1	0	1	4	1	7
17	2	1	1	5	1	10
18	3	4	4	1	7	19
19	13	9	8	6	5	41
20	8	13	14	4	6	45
Total Drivers	28	27	28	20	20	123

Table 14: Motor Vehicle Drivers Under 21 (Ages 15-20) in Crashes by Age, Sex and Alcohol-involvement in Doña Ana County, 2016

Age ¹	Total Drivers				Alcohol-involved Drivers			
	Sex		Total Drivers	Percent of Total	Sex		Total Drivers	Percent of Total
	Male	Female			Male	Female		
15	9	13	22	2%	0	0	0	0%
16	56	49	105	9%	1	0	1	5%
17	85	108	193	16%	1	0	1	5%
18	149	133	282	24%	5	2	7	35%
19	143	141	284	24%	3	2	5	25%
20	149	144	293	25%	4	2	6	30%
Total Drivers	591	588	1,179	100%	14	6	20	100%

¹ For analysis of drivers under age 21, when the driver age or sex are not identified on the crash report (typically hit-and-run drivers), the driver data are considered unreliable and are excluded from the analysis.

**Table 15: Frequency of Contributing Factors in Crashes
by Crash Severity in Doña Ana County, 2016**

Contributing Factors	Frequency of Contributing Factor ¹ by Crash Severity			
	Frequency in Fatal Crashes	Frequency in Injury Crashes	Frequency in Property Damage Only Crashes	Frequency in All Crashes
Human	39	1,671	3,066	4,776
Driver Inattention	5	561	1,082	1,648
Failed to Yield Right of Way	0	270	377	647
Other Improper Driving	4	140	280	424
Following Too Closely	0	141	260	401
Alcohol Involved	7	66	103	176
Excessive Speed	4	65	104	173
Made Improper Turn	1	45	115	161
Improper Lane Change	0	26	123	149
Disregarded Traffic Signal	2	76	66	144
Avoid No Contact - Other	0	43	90	133
Avoid No Contact - Vehicle	3	48	78	129
Improper Backing	1	12	102	115
Drove Left Of Center	2	36	65	103
Speed Too Fast for Conditions	4	42	54	100
Passed Stop Sign	0	26	47	73
Improper Overtaking	1	17	53	71
Pedestrian Error	1	24	9	34
Drug Involved	3	14	13	30
Cell Phone	0	9	13	22
Driverless Moving Vehicle	0	0	11	11
Failed to Yield to Emergency Vehicle	1	1	6	8
High Speed Pursuit	0	5	3	8
Vehicle Skidded Before Brake	0	3	4	7
Texting	0	1	4	5
Failed to Yield to Police Vehicle	0	0	4	4
Vehicle	1	46	101	148
Inadequate Brakes	0	20	37	57
Defective Tires	1	9	36	46
Other Mechanical Defect	0	13	24	37
Defective Steering	0	4	4	8
Environment	0	3	4	7
Road Defect	0	3	4	7
Low Visibility Due to Smoke	0	0	0	0
Traffic Control Not Functioning	0	0	0	0
Other	12	1,323	2,488	3,823
None	10	1,203	2,169	3,382
Other - No Driver Error	2	120	319	441

¹ Multiple contributing factors may be reported for any vehicle in a crash.

Table 16: People in Crashes by Crash Classification and Severity of Injuries in Doña Ana County, 2016

Crash Classification	People in Crashes by Severity of Injuries					Total People
	Fatalities (Class K)	Suspected Serious Injuries (Class A)	Suspected Minor Injuries (Class B)	Possible Injuries (Class C)	No Apparent Injuries (Class O)	
Animal	0	0	2	0	54	56
Fixed Object	2	6	70	71	446	595
Other (Non-Collision)	0	0	19	9	89	117
Other (Object)	0	0	9	4	125	138
Other Vehicle	10	87	261	1,162	7,866	9,386
Overturn/Rollover	1	8	34	36	82	161
Parked Vehicle	0	0	9	10	369	388
Pedalcyclist	1	4	22	10	72	109
Pedestrian	4	6	24	16	87	137
Railroad Train	0	0	0	0	0	0
Rollover	6	8	20	14	37	85
Vehicle on Other Road	0	0	0	1	11	12
Missing Data	0	0	1	9	88	98
Total People	24	119	471	1,342	9,326	11,282

Table 17: Killed or Injured Unbelted People in Crashes by Sex and Age Group in Doña Ana County, 2016

Age Groups	Unbelted People Killed or Injured ^{1,2}				Total People
	Male	Percent of Male	Female	Percent of Female	
0-4	3	7%	1	3%	4
5-9	3	7%	2	6%	5
10-14	3	7%	1	3%	4
15-19	3	7%	9	27%	12
20-24	8	19%	4	12%	12
25-29	4	10%	2	6%	6
30-34	2	5%	7	21%	9
35-39	3	7%	1	3%	4
40-44	5	12%	0	0%	5
45-49	2	5%	2	6%	4
50-54	0	0%	1	3%	1
55-59	2	5%	2	6%	4
60-64	0	0%	0	0%	0
65-69	1	2%	1	3%	2
70 +	3	7%	0	0%	3
Missing Data	0	0%	0	0%	0
Total People	42	100%	33	100%	75

¹ People injured are in one of three categories: suspected serious injury, suspected minor injury, or possible injury.

² Excludes people in or on buses, heavy trucks, motorcycles, or ATVs.

Figure 8: Seatbelt Use by People in Crashes with Fatal or Suspected Serious Injuries in Doña Ana County, 2012-2016

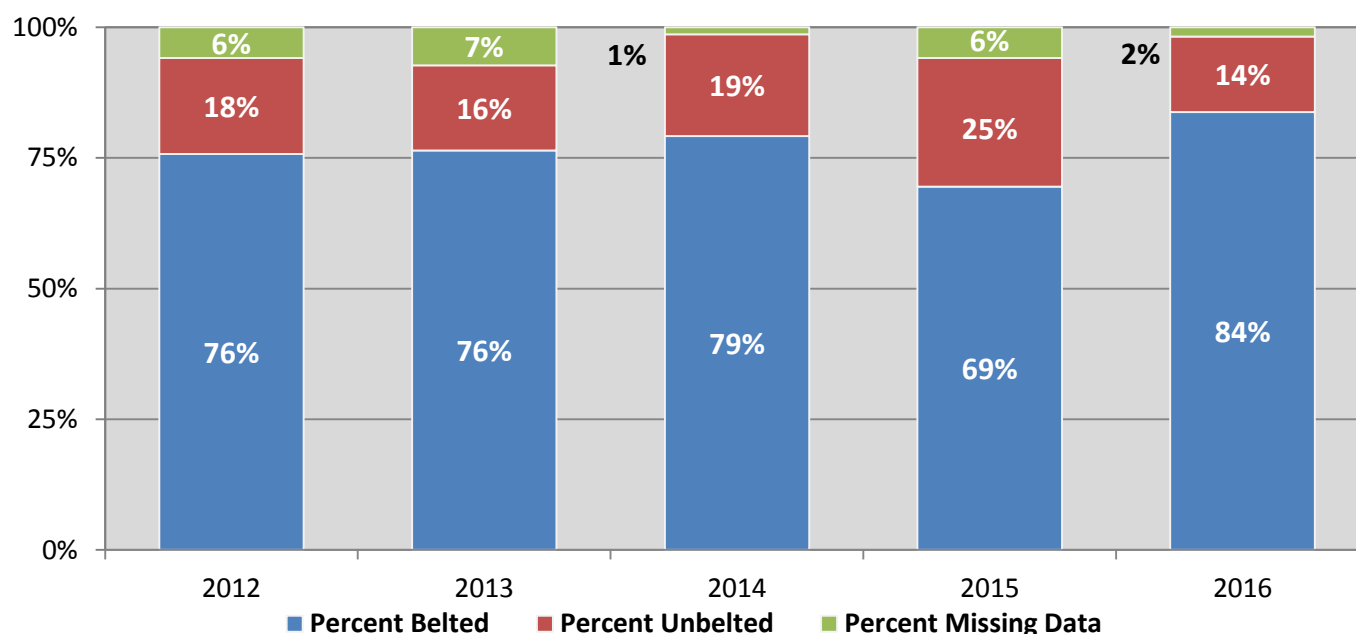
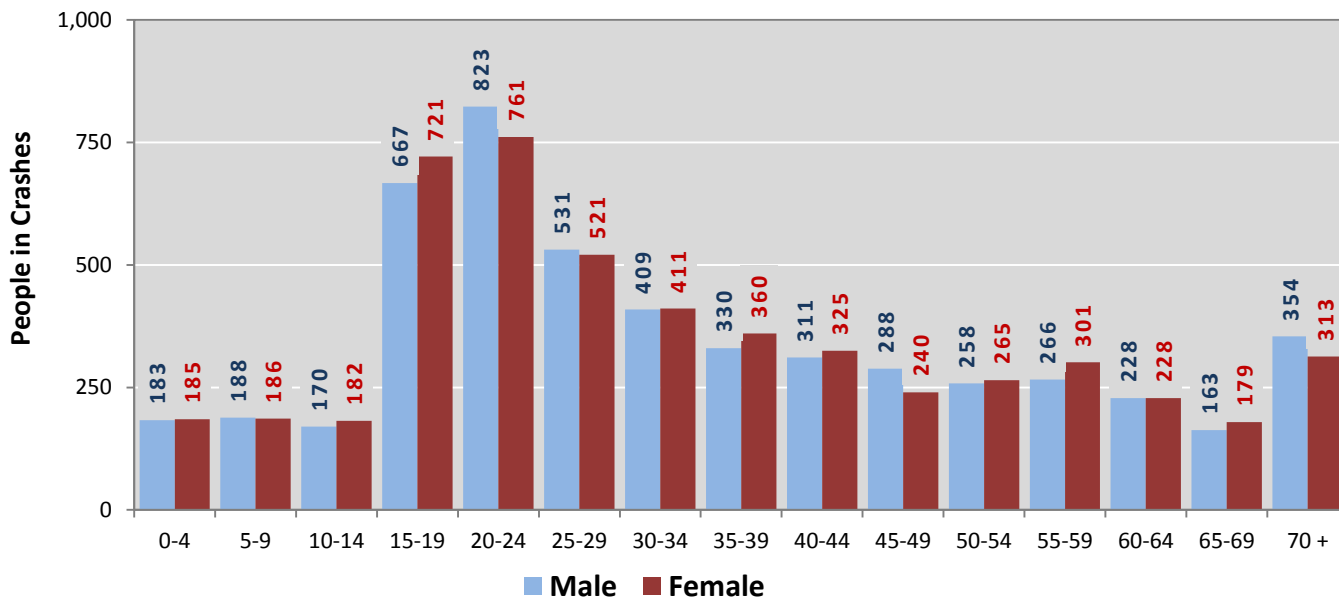
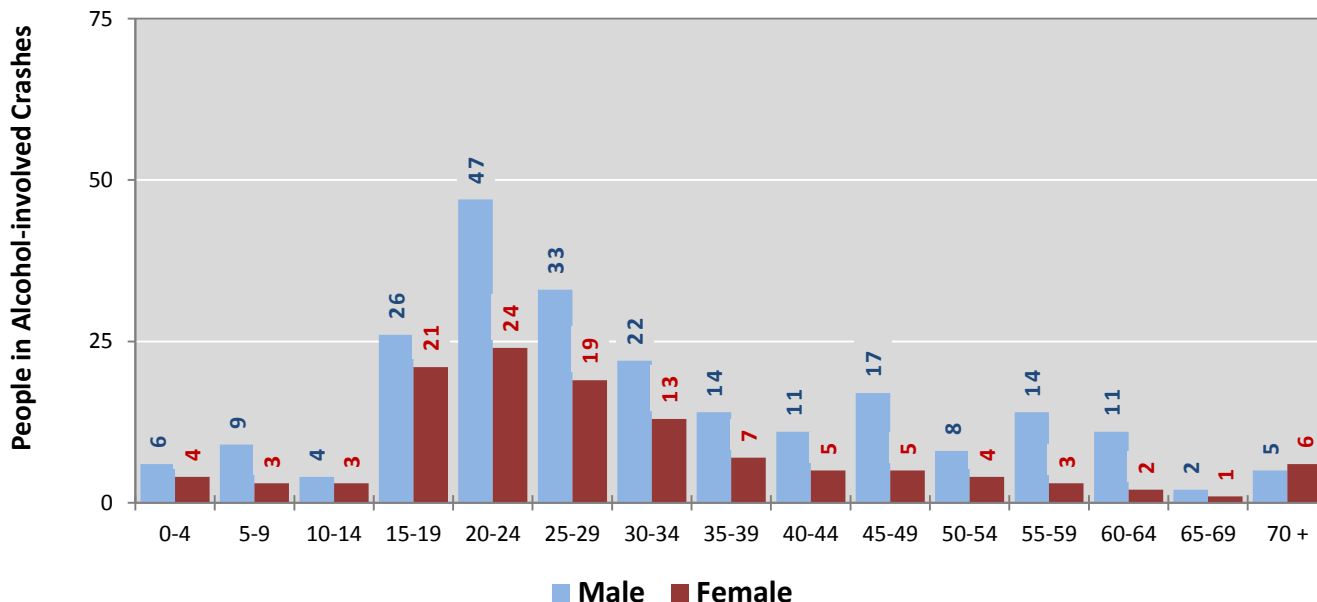


Figure 9: People in Crashes by Age Group and Sex in Doña Ana County, 2016



* In 2016, Doña Ana County had 935 people in crashes for which age or sex data were missing.

Figure 10: People in Alcohol-involved Crashes by Age Group and Sex in Doña Ana County, 2016



* In 2016, Doña Ana County had 29 people in alcohol-involved crashes for which age or sex data were missing.

Table 18: Pedestrians and Pedalcyclists in Crashes by Age Group in Doña Ana County, 2012-2016

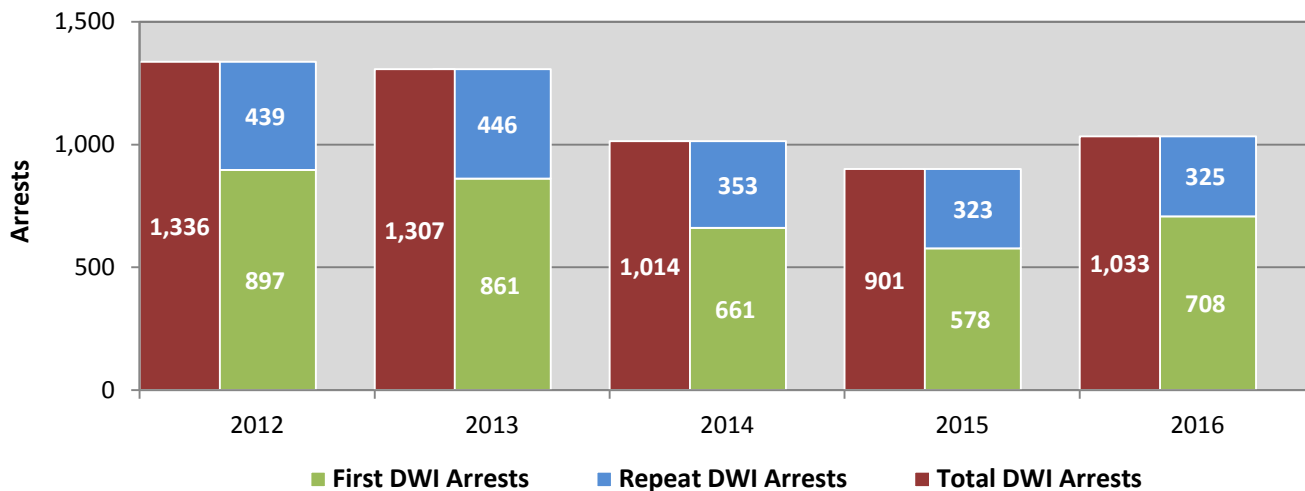
Age Groups	Pedestrians and Pedalcyclists ¹ in Crashes					5-Year Total People
	2012	2013	2014	2015	2016	
0-4	1	2	0	1	2	6
5-9	5	1	3	2	7	18
10-14	4	8	0	5	6	23
15-19	5	9	14	16	12	56
20-24	9	8	10	18	16	61
25-29	4	6	8	9	7	34
30-34	2	4	3	7	6	22
35-39	3	4	6	2	5	20
40-44	6	3	6	2	5	22
45-49	7	11	4	2	7	31
50-54	1	4	2	9	9	25
55-59	2	5	7	7	4	25
60-64	4	4	4	2	8	22
65-69	1	4	3	0	3	11
70 +	2	7	7	0	4	20
Missing Data	3	6	5	4	5	23
Total People	59	86	82	86	106	419

Table 19: Pedestrians and Pedalcyclists in Crashes by Alcohol Involvement and Severity of Injuries in Doña Ana County, 2016

Alcohol Involvement	Pedestrians and Pedalcyclists ¹ in Crashes					Total People
	Fatalities (Class K)	Suspected Serious Injuries (Class A)	Suspected Minor Injuries (Class B)	Possible Injuries (Class C)	No Apparent Injury (Class O)	
Total Pedalcyclists	1	4	22	9	13	49
Involved	0	0	0	1	0	1
Not Involved	1	4	22	8	13	48
Total Pedestrians	4	6	23	14	10	57
Involved	3	0	2	0	0	5
Not Involved	1	6	21	14	10	52
Total People	5	10	45	23	23	106

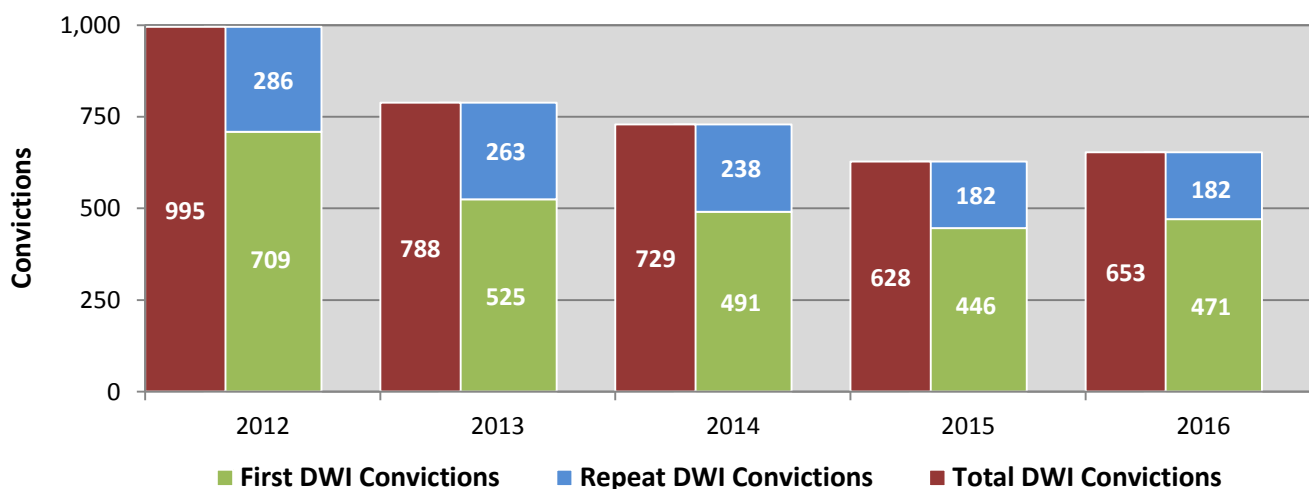
¹ Pedestrians and pedalcyclists are counted as non-motorized vehicles, when involved in a crash with a motor vehicle.

**Figure 11: DWI Arrests in Doña Ana County,
Showing First and Repeat DWI Arrests, 2012-2016**



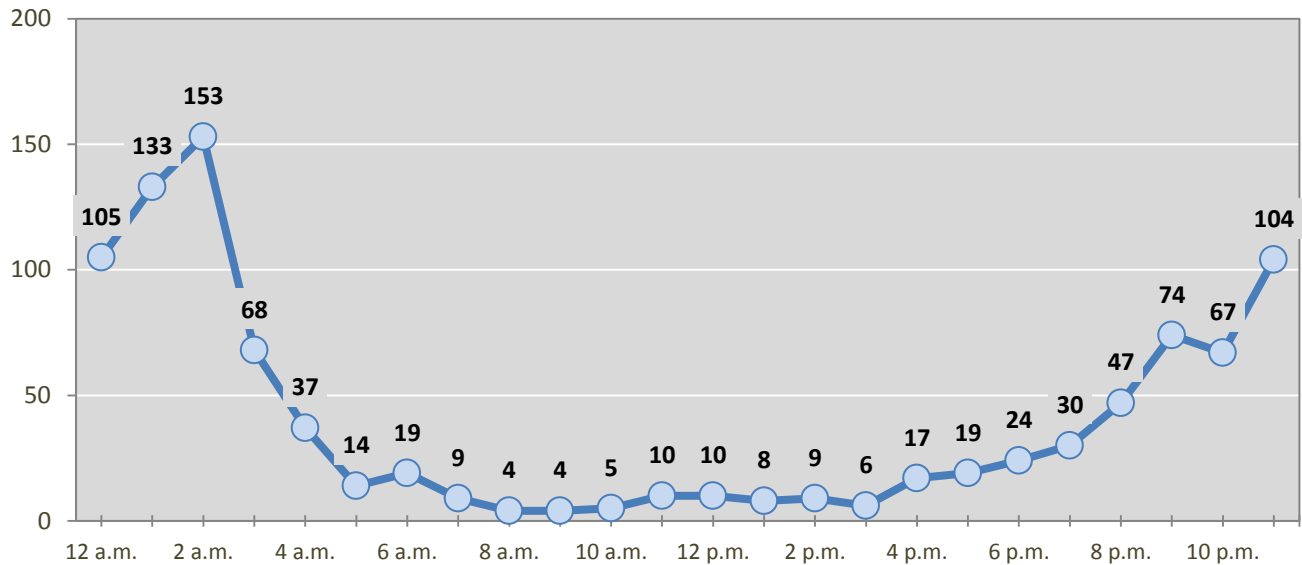
*Values are based upon the year of the arrest.

**Figure 12: DWI Convictions in Doña Ana County,
Showing First and Repeat DWI Convictions, 2012-2016**



*Values are based upon the year of the conviction.

Figure 13: DWI Arrests by Hour in Doña Ana County, 2016



* In 2016, Doña Ana County had 57 arrests for which hour data were missing.

Table 20: DWI Arrests by Day of Week in Doña Ana County, 2012-2016

Day of Week	Year					5-Year Average
	2012	2013	2014	2015	2016	
Sunday	262	279	227	215	230	243
Monday	89	109	75	77	101	90
Tuesday	100	92	79	56	84	82
Wednesday	151	136	116	99	89	118
Thursday	177	132	106	94	92	120
Friday	222	223	170	137	201	191
Saturday	335	336	241	223	236	274
Total Arrests	1,336	1,307	1,014	901	1,033	1,118

Table 21: Driver First DWI Arrests by Age Group in Doña Ana County, 2012-2016

Age Groups	Driver First DWI Arrests ¹				
	2012	2013	2014	2015	2016
15-19	87	72	51	38	68
20-24	260	267	199	177	202
25-29	162	170	115	101	145
30-34	102	98	73	78	73
35-39	82	75	71	45	62
40-44	70	56	28	41	44
45-49	53	33	36	31	29
50-54	27	32	36	24	35
55-59	23	25	20	18	19
60-64	17	18	15	11	12
65-69	7	8	4	6	7
70 +	3	2	5	2	3
Missing Data	4	5	8	6	9
Total Drivers	897	861	661	578	708

¹ Values are based upon the year of the arrest.

Table 22: Driver Repeat DWI Arrests by Age Group in Doña Ana County, 2012-2016

Age Groups	Driver Repeat DWI Arrests ¹				
	2012	2013	2014	2015	2016
15-19	3	7	3	3	2
20-24	63	41	44	35	34
25-29	75	83	63	58	58
30-34	89	72	59	42	51
35-39	48	49	43	53	48
40-44	52	62	38	33	31
45-49	40	52	25	26	38
50-54	30	39	30	34	24
55-59	21	20	19	19	22
60-64	11	10	15	9	5
65-69	5	7	8	4	5
70 +	0	2	4	4	2
Missing Data	2	2	2	3	5
Total Drivers	439	446	353	323	325

¹ Values are based upon the year of the arrest.

Table 23: Driver First DWI Convictions by Age Group in Doña Ana County, 2012-2016

Age Groups	Driver First DWI Convictions ¹				
	2012	2013	2014	2015	2016
15-19	63	39	29	27	32
20-24	214	157	149	148	148
25-29	114	97	98	82	88
30-34	94	60	54	53	54
35-39	54	44	57	39	44
40-44	56	47	25	20	28
45-49	44	28	18	23	24
50-54	24	17	28	16	26
55-59	24	10	17	14	15
60-64	11	11	9	11	5
65-69	4	8	2	6	2
70 +	4	3	2	3	1
Missing Data	3	4	3	4	4
Total Drivers	709	525	491	446	471

¹ Values are based upon the year of the conviction.

Table 24: Driver Repeat DWI Convictions by Age Group in Doña Ana County, 2012-2016

Age Groups	Driver Repeat DWI Convictions ¹				
	2012	2013	2014	2015	2016
15-19	4	1	1	2	1
20-24	29	31	19	18	13
25-29	52	43	45	29	26
30-34	53	49	42	32	28
35-39	32	37	25	24	33
40-44	26	35	38	21	22
45-49	34	23	24	12	23
50-54	23	23	23	24	17
55-59	19	15	8	8	7
60-64	9	2	8	5	5
65-69	4	2	2	4	3
70 +	1	0	2	3	0
Missing Data	0	2	1	0	4
Total Drivers	286	263	238	182	182

¹ Values are based upon the year of the conviction.

Table 25: Court Disposition of DWI Arrests for Doña Ana County and the State, 2016

Court Disposition of DWI Arrest ¹	Doña Ana County	Statewide	Percent of Statewide
Total DWI Arrests	1,033	10,344	10.0%
DWI Arrests Resulting in Convictions	564	5,541	10.2%
DWI Arrests Resulting in Dismissals ²	31	1,512	2.1%
DWI Arrests Awaiting Disposition	438	3,291	13.3%

¹ These are the number of DWI arrests in 2016 and whether the case resulted in a conviction or dismissal, or is still awaiting court disposition, as reported in the NM MVD Citation Tracking System (CTS) as of December 2017.

² For this table, a very small number of "not guilty" rulings may be included in the category Dismissals.

Table 26: Average Number of Days from Date of DWI Arrest to Date of Court Disposition in Doña Ana County and the State, 2016

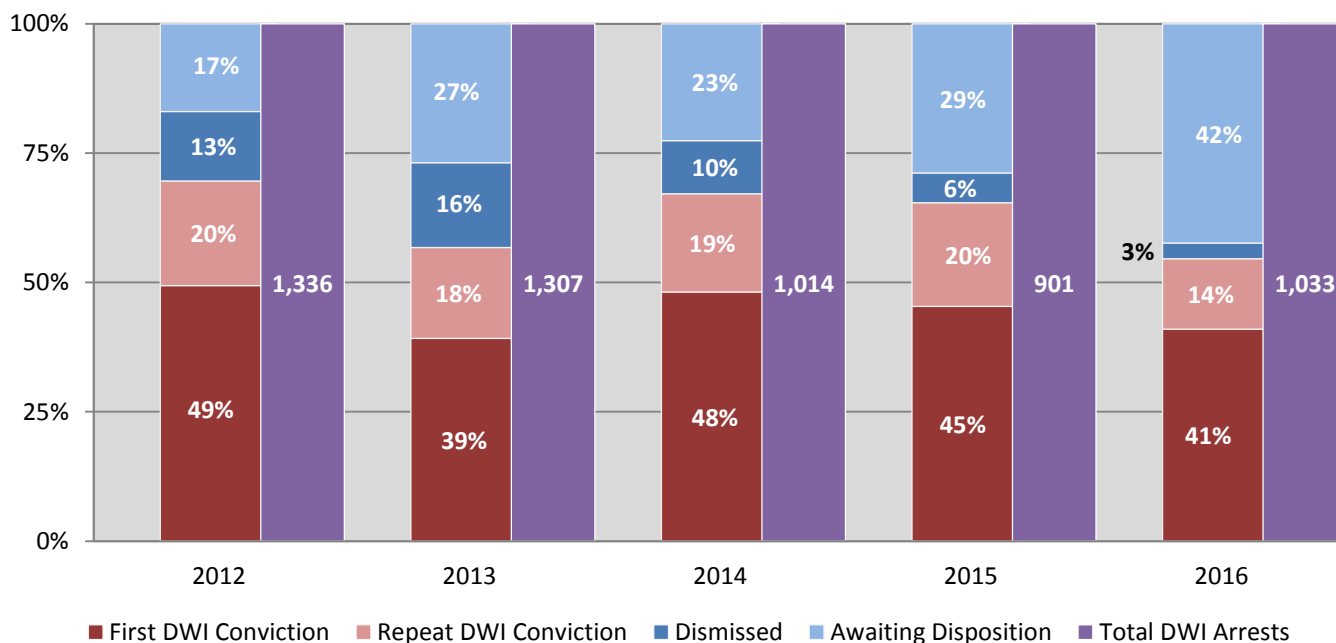
Court Disposition	Average Number of Days		Deviation from Statewide Average
	Doña Ana County	Statewide	
DWI Conviction	169	157	12
DWI Dismissal	194	179	15

Table 27: Court Disposition of DWI Arrests in Doña Ana County, 2012-2016

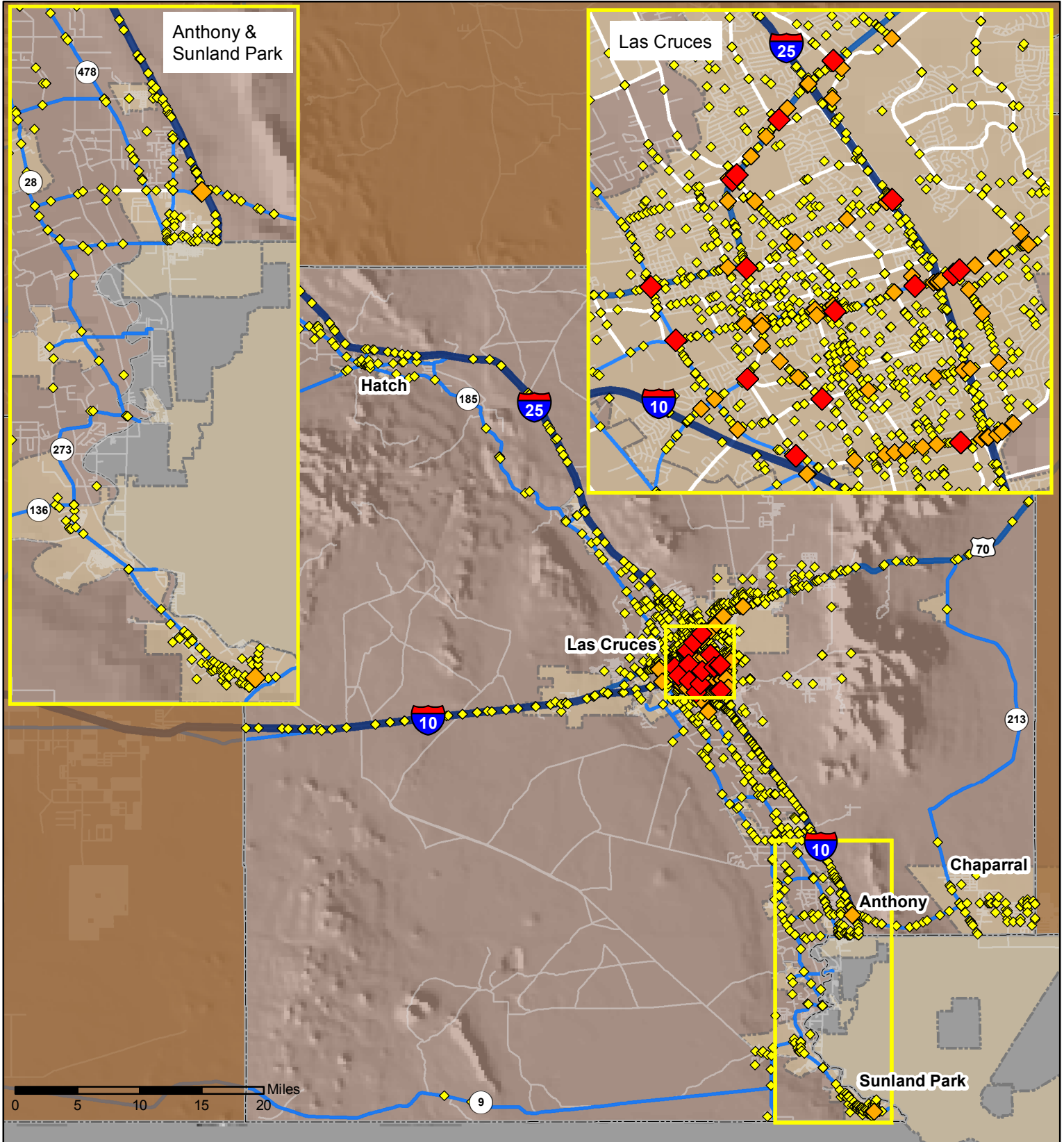
Year of DWI Arrest ¹	Court Disposition				Total DWI Arrests
	First DWI Conviction	Repeat DWI Conviction	Dismissed	Awaiting Disposition	
2012	660	270	179	227	1,336
2013	512	230	214	351	1,307
2014	488	193	104	229	1,014
2015	409	180	52	260	901
2016	423	141	31	438	1,033

¹ Values are based upon the year of the arrest.

Figure 14: Court Dispositions by Percentage of DWI Arrests in Doña Ana County, 2012-2016



*Table 27 contains the values used to calculate percentages shown in Figure 14.



Legend



- Forest & Wildlife Areas
- Reservations & Pueblos
- County Boundaries
- City Boundaries
- Interstate Highways
- U.S. Highways
- State Highways
- Streets & Roadways

Crashes 2016

- 1 - 8 Crashes
- 9 - 24 Crashes
- 25 - 52 Crashes