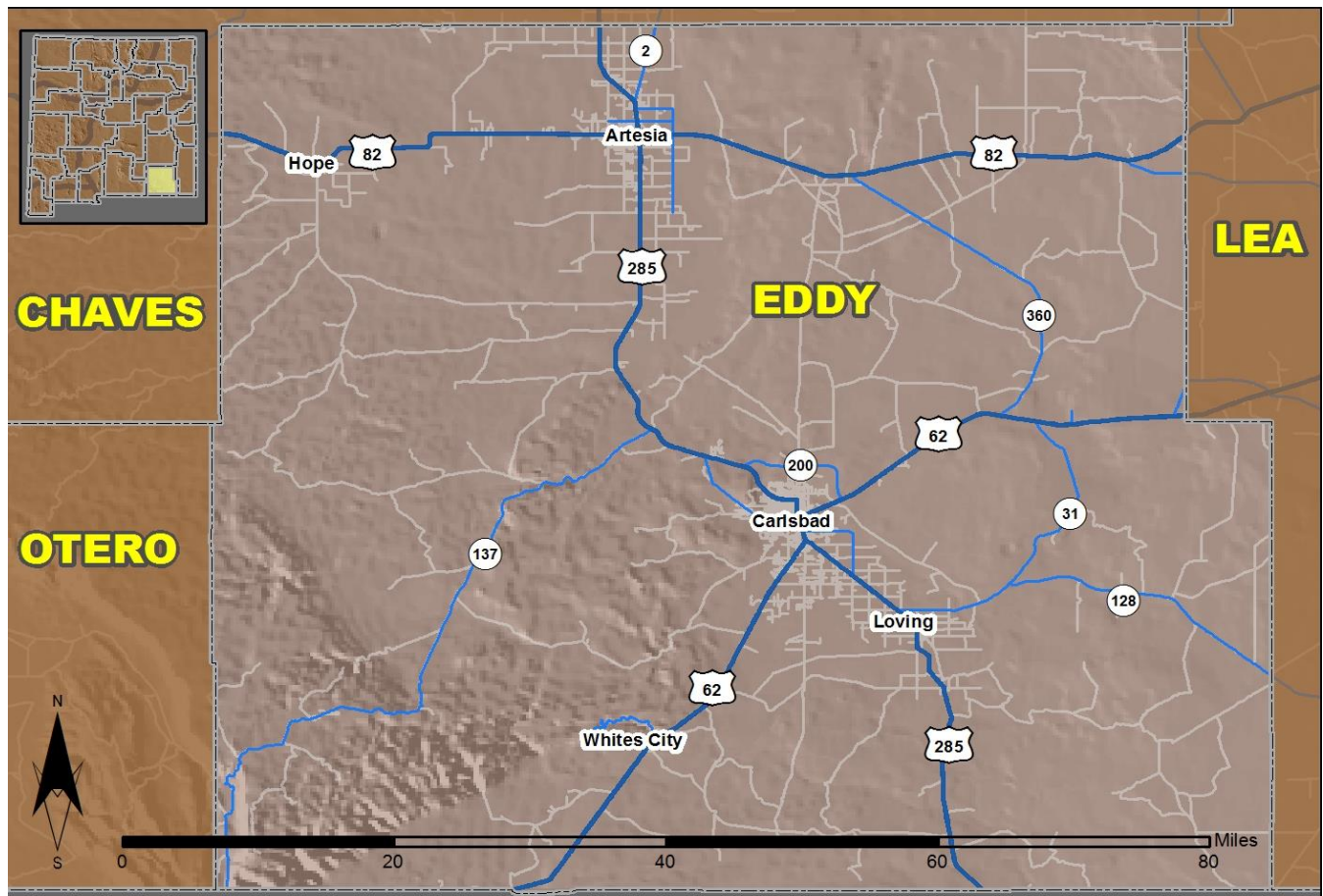


2016 Community Report

Eddy County



Produced for the New Mexico Department of Transportation,
Traffic Safety Division, Traffic Records Bureau,
Under Contract 5801 by the University of New Mexico,
Geospatial and Population Studies, Traffic Research Unit

Distributed in compliance with New Mexico Statute 66-7-214
as a reference source regarding New Mexico traffic crashes

For the purposes of this report, data are compiled by the University of New Mexico, Geospatial and Population Studies, Traffic Research Unit (TRU), on behalf of the New Mexico Department of Transportation (NMDOT). Data in this report may differ from that in other data sources, such as the Federal Fatality Analysis Reporting System (FARS), due to the timing of publications and rules for how data are compiled and maintained in Federal vs. State databases. If you have questions regarding this report, please contact the Traffic Safety Division at 505-827-0427.

<http://tru.unm.edu/Crash-Reports/Community-Reports/>

Definitions

Aggravated DWI – A driver arrested for 1) driving with a BAC of 0.16 or higher, 2) driving under the influence of alcohol or drugs and causing bodily injury to a human being as a result, or 3) driving under the influence of alcohol or drugs and refusing to submit to a BAC test at the time of arrest for DWI.

Alcohol-involved Crash – A crash for which the Uniform Crash Report indicated that 1) a DWI citation was issued, 2) alcohol was a contributing factor, or 3) a person in control of a vehicle (including a pedestrian or pedalcyclist) was suspected of being under the influence of alcohol.

Alcohol-involved Driver – A person in control of a vehicle who was cited for DWI or indicated on the Uniform Crash Report as being either suspected or determined by testing to be under the influence of alcohol. There can be multiple alcohol-involved drivers in a single alcohol-involved crash.

Crash – A reported incident on a public roadway involving one or more motor vehicles that resulted in death, personal injury, or at least \$500 in property damage. Crashes on private property (such as a parking lot) are not included.

DWI Arrest (Citation) – In this report, a DWI arrest (a.k.a. a DWI citation) is a driver arrested for either DWI or aggravated DWI. New Mexico’s legal limit for presumption of driving while intoxicated (DWI) is 0.08 for non-commercial drivers older than 21 years of age, 0.04 for commercial vehicle drivers, and 0.02 for drivers younger than 21 years of age.

DWI Conviction – A driver convicted of driving under the intoxicating influence of alcohol, narcotics, or pathogenic drugs, including aggravated DWI.

Fatal Crash – A crash in which at least one person was killed. More than one person can be killed in a single fatal crash.

Fatalities – The number of people killed in a crash. The terms “killed” and “deaths” are synonymous with “fatalities.” A fatality is crash-related if it occurs at the time of the crash or if the person(s) involved in the crash dies within 30 days.

Injury Crash – A reported crash in which at least one person was injured. Injury crashes involve at least one suspected serious injury (Class A), suspected minor injury (Class B), or possible injury (Class C). Fatal crashes are not included.

Missing Data – An indication that the applicable field on the UCR form was left blank or contained an invalid code. Starting with crashes that occurred in 2012, improvements in the identification of missing data in the NMDOT crash database led to an increase in the reported amount of missing data.

Pedalcyclist – A person riding a mechanism of transport that is powered solely by pedals (a.k.a. bicyclist).

Pedestrian – A person on foot, walking, running, jogging, hiking, sitting or lying down who is involved in a motor vehicle traffic crash.

Sources

Crash Data – New Mexico Department of Transportation, Traffic Safety Division, Traffic Records Bureau, Traffic Crash Database, as of the report date below. Crash data are compiled using NMDOT Uniform Crash Reports (UCR), submitted by law enforcement agencies in the state, for any incident on a public roadway involving one or more motor vehicles that resulted in death, injury, or at least \$500 in property damage. These reports are processed by the NMDOT Traffic Records Bureau and analyzed by the University of New Mexico, Geospatial and Population Studies, Traffic Research Unit (TRU).

DWI Citation Tracking System (CTS) – New Mexico Taxation and Revenue Department (NM TRD), Motor Vehicle Division (MVD), DWI Citation Tracking System (CTS), as of December 2017. Repeat offenders are identified by the combination of account key, arrest date, and citation number. County data are based upon the county where the arrest took place. City data are based upon the city where the offender resides.

Urban Areas – New Mexico Department of Transportation, Asset Management and Planning, 2010 U.S. Census Urbanized Area Boundaries, NMDOT-Adjusted, and U.S. Census Urban Clusters, August 21, 2013. In crashes before 2013, “urban” was defined as a town or city with a population of at least 2,500 people.

Table 1: Total Crashes and Alcohol-involved Crashes by Crash Severity in Eddy County, 2007-2016

Year	Total Crashes				Alcohol-involved Crashes			
	Fatal	Injury	Property Damage Only	Total	Fatal	Injury	Property Damage Only	Total
2007	9	331	798	1,138	1	20	25	46
2008	15	342	1,010	1,367	6	39	36	81
2009	15	309	884	1,208	6	30	30	66
2010	13	291	674	978	3	18	22	43
2011	7	262	607	876	1	19	15	35
2012	14	270	652	936	4	20	25	49
2013	11	304	846	1,161	2	17	25	44
2014	14	341	1,212	1,567	2	22	51	75
2015	9	369	1,212	1,590	1	26	37	64
2016	6	341	1,052	1,399	1	18	32	51

Figure 1: Alcohol-involved Fatal and Injury Crashes Compared with Non-alcohol-involved Fatal and Injury Crashes in Eddy County, 2007-2016

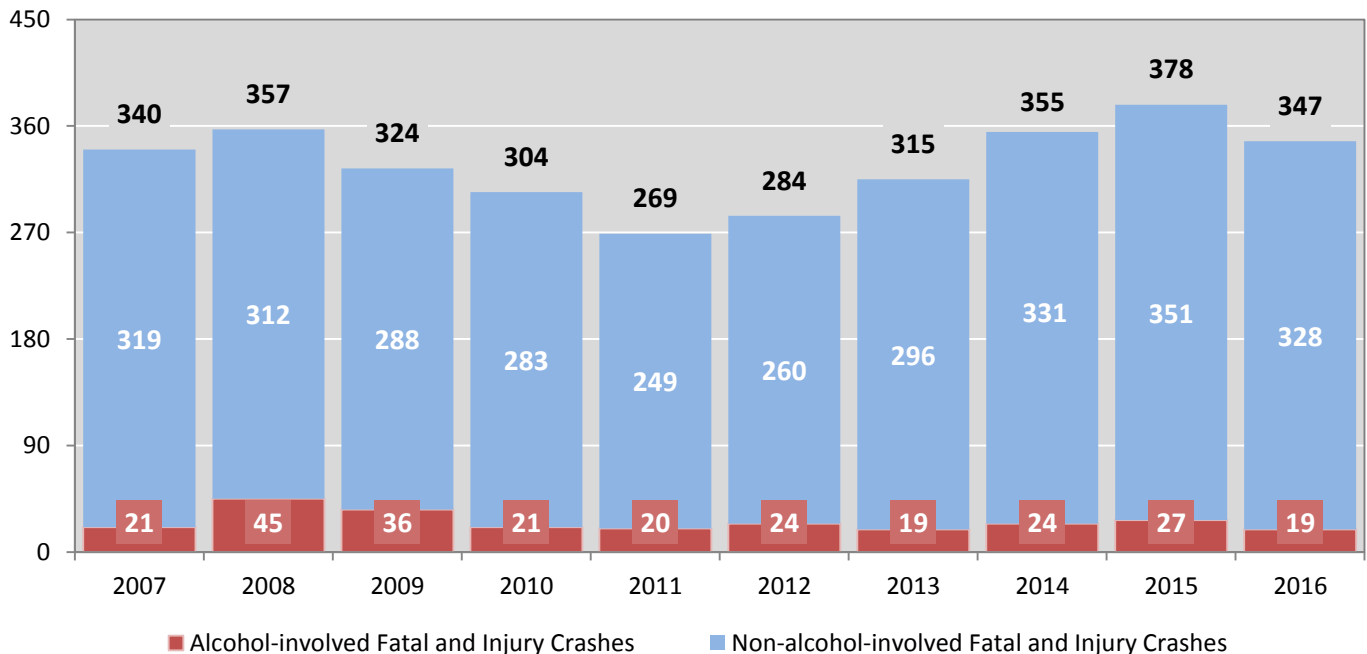


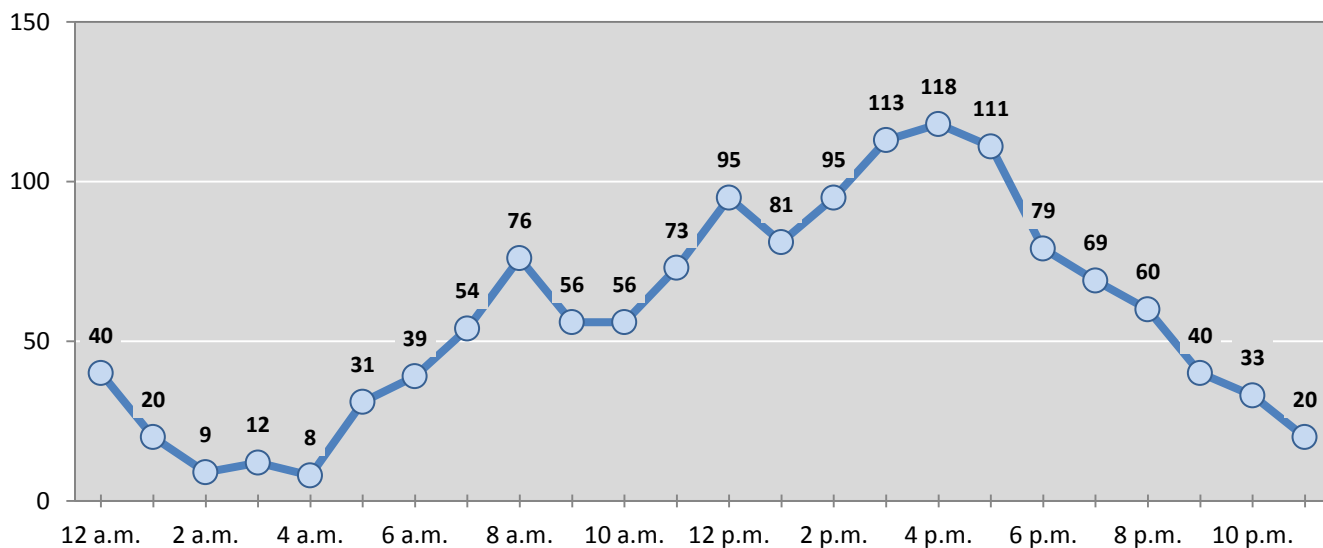
Table 2: Crashes by Month in Eddy County, 2012-2016

Month	Crashes					5-Year Average
	2012	2013	2014	2015	2016	
January	46	106	125	170	130	115
February	40	82	113	146	125	101
March	44	75	137	119	136	102
April	86	113	127	126	116	114
May	106	65	92	125	100	98
June	72	85	145	137	120	112
July	121	98	104	120	118	112
August	95	97	137	160	96	117
September	74	103	157	106	127	113
October	102	129	181	130	118	132
November	70	108	116	113	106	103
December	80	100	133	138	107	112
Total Crashes	936	1,161	1,567	1,590	1,399	1,331

Table 3: Alcohol-involved Crashes by Month in Eddy County, 2012-2016

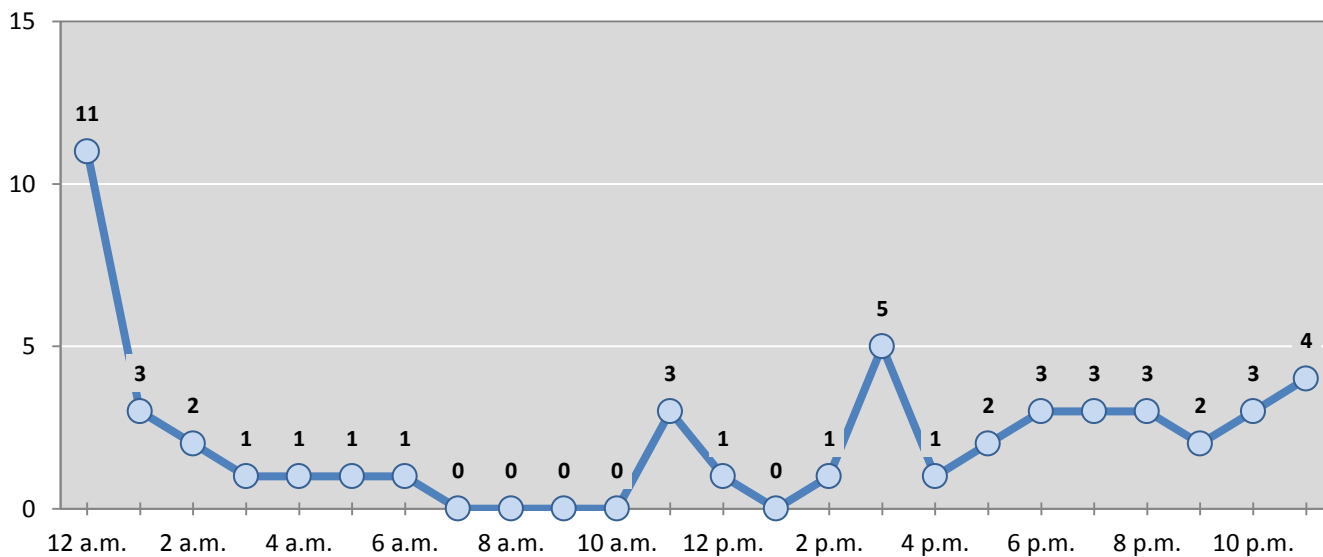
Month	Alcohol-involved Crashes					5-Year Average
	2012	2013	2014	2015	2016	
January	4	4	2	5	4	4
February	4	4	4	6	1	4
March	5	4	4	5	6	5
April	4	5	7	4	5	5
May	6	1	6	6	5	5
June	1	7	8	6	5	5
July	8	1	6	4	6	5
August	5	6	8	6	2	5
September	4	3	3	5	2	3
October	3	1	14	3	2	5
November	3	6	6	10	6	6
December	2	2	7	4	7	4
Total Crashes	49	44	75	64	51	57

Figure 2: Crashes by Hour in Eddy County, 2016



* In 2016, Eddy County had 11 crashes for which hour data were missing.

Figure 3: Alcohol-involved Crashes by Hour in Eddy County, 2016



* In 2016, Eddy County had 0 alcohol-involved crashes for which hour data were missing.

Table 4: Alcohol-involved Crashes by Day of Week in Eddy County, 2012-2016

Day of Week	Alcohol-involved Crashes					5-Year Average
	2012	2013	2014	2015	2016	
Sunday	6	11	15	17	10	12
Monday	4	0	10	7	6	5
Tuesday	5	2	7	6	7	5
Wednesday	11	7	8	4	4	7
Thursday	6	5	10	7	6	7
Friday	5	11	7	10	3	7
Saturday	12	8	18	13	15	13
Total Crashes	49	44	75	64	51	57

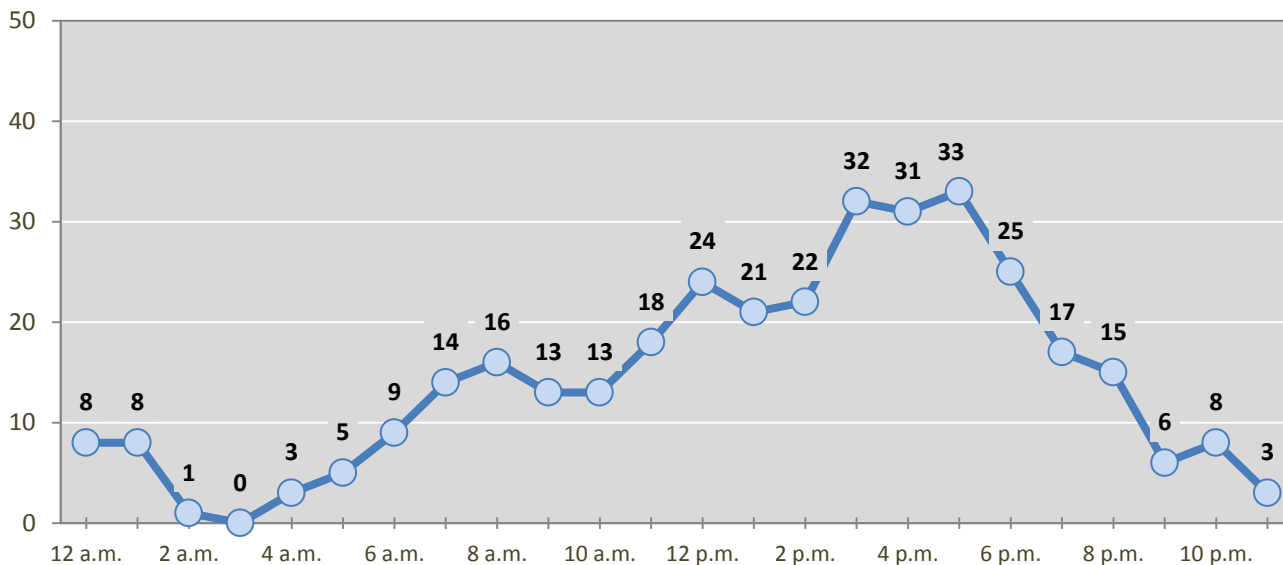
Table 5: Fatal and Injury Crashes by Day of Week in Eddy County, 2012-2016

Day of Week	Fatal and Injury Crashes					5-Year Average
	2012	2013	2014	2015	2016	
Sunday	24	30	36	37	33	32
Monday	48	46	65	42	67	54
Tuesday	49	54	50	79	47	56
Wednesday	51	43	55	46	66	52
Thursday	38	44	58	58	53	50
Friday	44	53	49	68	46	52
Saturday	30	45	42	48	35	40
Total Crashes	284	315	355	378	347	336

Table 6: Pedestrian and Pedalcyclist Crashes by Day of Week in Eddy County, 2012-2016

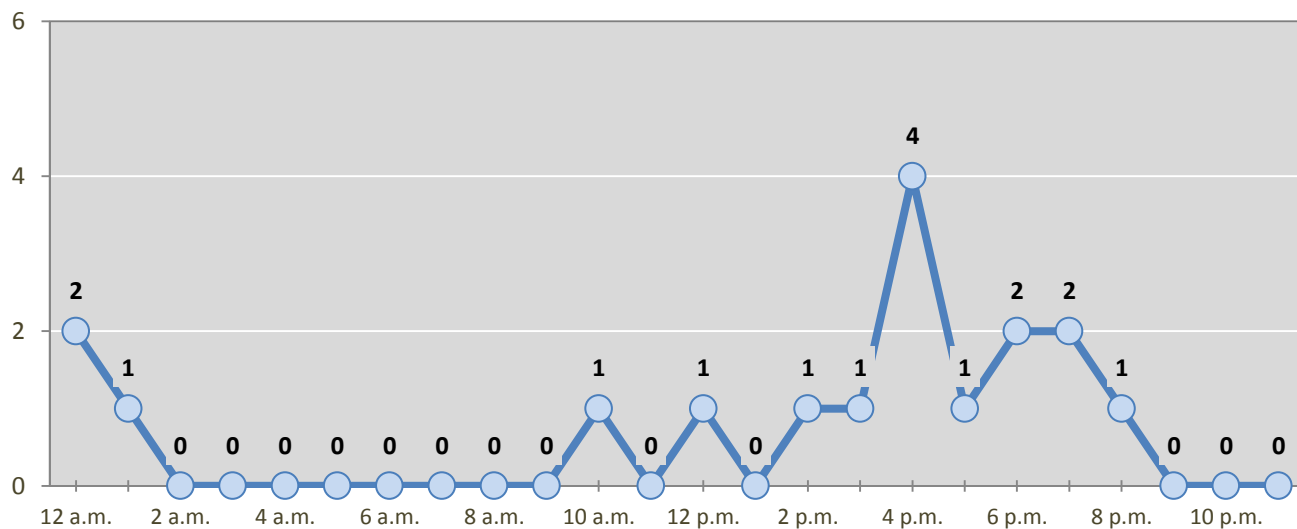
Day of Week	Pedestrian and Pedalcyclist Crashes					5-Year Average
	2012	2013	2014	2015	2016	
Sunday	1	2	3	3	3	2
Monday	1	4	4	1	2	2
Tuesday	3	1	1	6	4	3
Wednesday	4	3	5	4	3	4
Thursday	4	2	5	4	1	3
Friday	2	2	1	5	2	2
Saturday	0	1	1	3	2	1
Total Crashes	15	15	20	26	17	19

Figure 4: Fatal and Injury Crashes by Hour in Eddy County, 2016



* In 2016, Eddy County had 2 crashes for which hour data were missing.

Figure 5: Pedestrian and Pedalcyclist Crashes by Hour in Eddy County, 2016



* In 2016, Eddy County had 0 crashes for which hour data were missing.

Table 7: Severity of Injuries to People in Crashes by Rural and Urban Location in Eddy County, 2016

Urban and Rural Locations by Alcohol-involvement	People in Crashes by Severity of Injuries					Total People
	Fatalities (Class K)	Suspected Serious Injuries (Class A)	Suspected Minor Injuries (Class B)	Possible Injuries (Class C)	No Apparent Injuries (Class O)	
People in Alcohol-involved Crashes	1	3	18	7	76	105
Urban	0	1	16	5	58	80
Rural Non-Interstate	1	2	2	2	18	25
Rural Interstate	0	0	0	0	0	0
People in Crashes	7	26	88	364	2,919	3,404
Urban	2	20	61	318	2,466	2,867
Rural Non-Interstate	5	6	27	46	453	537
Rural Interstate	0	0	0	0	0	0
Percent in Alcohol-involved Crashes	14%	12%	20%	2%	3%	3%

Table 8: Total Crashes by Roadway System and Crash Severity in Eddy County, 2012-2016

Crash Severity by System	Crashes by Year					5-Year Average
	2012	2013	2014	2015	2016	
Total Rural Interstate	0	0	0	0	0	0
Fatal Crash	0	0	0	0	0	0
Injury Crash	0	0	0	0	0	0
Property Damage Only Crash	0	0	0	0	0	0
Total Rural Non-Interstate	184	179	434	379	296	294
Fatal Crash	11	7	13	6	4	8
Injury Crash	75	79	114	100	63	86
Property Damage Only Crash	98	93	307	273	229	200
Total Urban	752	982	1,133	1,211	1,103	1,037
Fatal Crash	3	4	1	3	2	3
Injury Crash	195	225	227	269	278	239
Property Damage Only Crash	554	753	905	939	823	795

Table 9: Total Crashes by Crash Classification in Eddy County, 2012-2016

Crash Classification	Total Crashes by Year					5-Year Average
	2012	2013	2014	2015	2016	
Animal	46	35	100	109	109	80
Fixed Object	100	109	187	184	169	150
Other (Non-Collision)	14	13	30	15	21	19
Other (Object)	20	31	34	36	17	28
Other Vehicle	577	738	911	972	855	811
Overturn/Rollover	67	78	109	34	56	69
Parked Vehicle	73	123	121	112	128	111
Pedalcyclist	7	6	12	9	6	8
Pedestrian	8	9	10	17	12	11
Railroad Train	0	1	6	1	0	2
Rollover	0	0	1	66	8	15
Vehicle on Other Road	14	14	25	23	18	19
Missing Data	10	4	21	12	0	9
Total Crashes	936	1,161	1,567	1,590	1,399	1,331

Table 10: Vehicles in Crashes by Vehicle Type in Eddy County, 2012-2016

Vehicle Type ¹	Vehicles in Crashes by Vehicle Type					5-Year Average
	2012	2013	2014	2015	2016	
Bus	7	3	8	2	3	5
Motorcycle	34	28	38	27	39	33
Passenger	592	659	756	868	811	737
Pedalcyclist	7	6	12	9	5	8
Pedestrian	8	10	8	18	14	12
Pickup	568	745	1,002	1,042	860	843
Semi	114	140	206	180	133	155
Van/SUV/4WD	272	380	524	504	468	430
Other Vehicle	7	21	10	28	33	20
Missing Data	73	162	204	144	105	138
Total Vehicles	1,682	2,154	2,768	2,822	2,471	2,379

¹ Pedestrians and pedalcyclists are counted as non-motorized vehicles, when involved in a crash with a motor vehicle. See Page 17 for data on drivers of non-motorized vehicles in crashes (i.e. pedestrians and pedalcyclists).

Table 11: Motor Vehicle Drivers in Crashes by Vehicle Type and Age Group in Eddy County, 2016

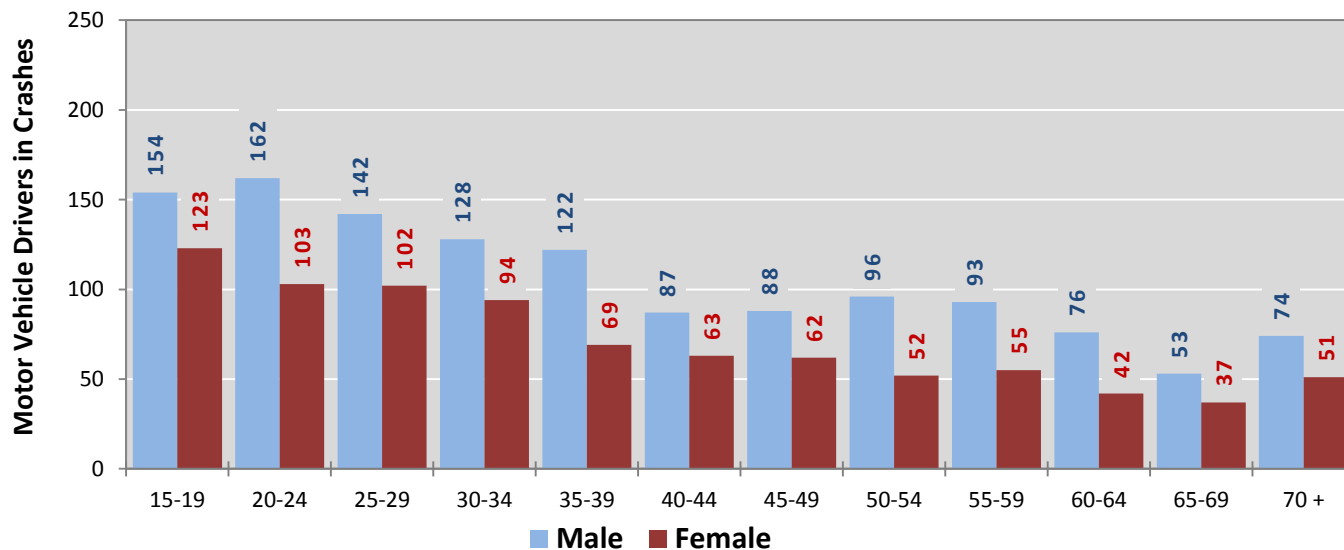
Age Groups	Motor Vehicle ¹ Drivers by Vehicle Type and Age Group								Total Drivers
	Bus	Motor-cycle	Passenger	Pickup	Semi	Van 4WD SUV	Other Vehicle	Missing Data	
15-19	0	0	139	98	0	40	3	0	280
20-24	0	5	127	86	5	40	3	2	268
25-29	0	4	86	82	13	59	4	3	251
30-34	0	7	64	88	11	51	4	1	226
35-39	0	7	54	67	13	50	4	0	195
40-44	0	2	50	52	19	27	3	0	153
45-49	1	2	50	47	28	27	2	0	157
50-54	1	5	37	61	12	29	2	1	148
55-59	1	2	33	71	13	35	0	0	155
60-64	0	3	41	49	5	22	1	1	122
65-69	0	1	24	38	5	24	1	0	93
70 +	0	1	51	41	2	29	2	0	126
Missing Data	0	0	55	80	7	35	4	97	278
Total Drivers	3	39	811	860	133	468	33	105	2,452

Table 12: Alcohol-involved Motor Vehicle Drivers in Crashes by Vehicle Type and Age Group in Eddy County, 2016

Age Groups	Alcohol-involved Motor Vehicle ¹ Drivers by Vehicle Type and Age Group								Total Drivers
	Bus	Motor-cycle	Passenger	Pickup	Semi	Van 4WD SUV	Other Vehicle	Missing Data	
15-19	0	0	1	1	0	1	1	0	4
20-24	0	0	1	5	0	1	1	0	8
25-29	0	0	4	2	1	2	0	0	9
30-34	0	2	1	2	0	1	0	0	6
35-39	0	1	2	1	0	0	0	0	4
40-44	0	0	3	3	0	0	0	0	6
45-49	0	0	0	1	0	1	0	0	2
50-54	0	2	1	0	0	0	0	0	3
55-59	0	0	0	2	0	0	0	0	2
60-64	0	1	0	0	0	0	0	0	1
65-69	0	0	0	3	0	0	0	0	3
70 +	0	0	2	0	0	0	0	0	2
Missing Data	0	0	0	1	0	0	0	0	1
Total Drivers	0	6	15	21	1	6	2	0	51

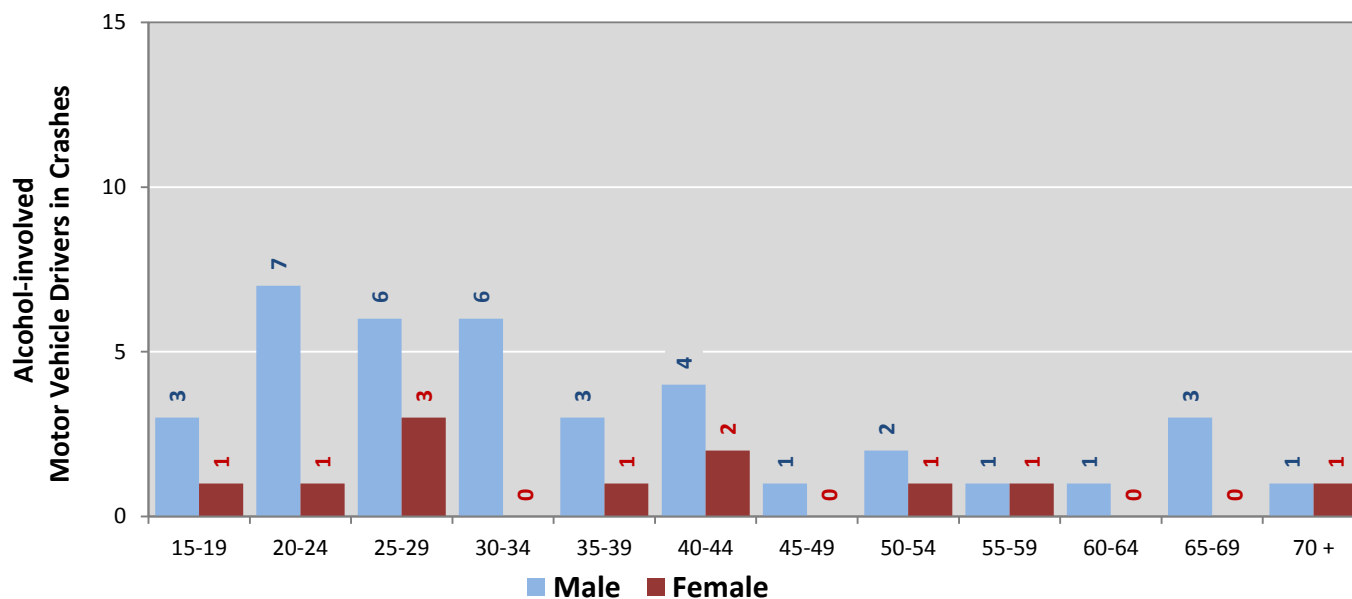
¹ See Page 17 for data on drivers of non-motorized vehicles in crashes (i.e. pedestrians and pedalcyclists).

Figure 6: Motor Vehicle Drivers in Crashes by Age Group and Sex in Eddy County, 2016



* In 2016, Eddy County had 324 drivers in crashes for which age or sex data were missing.

Figure 7: Alcohol-involved Motor Vehicle Drivers in Crashes by Age Group and Sex in Eddy County, 2016



* In 2016, Eddy County had 2 drivers in crashes for which age or sex data were missing.

Table 13: Alcohol-involved Motor Vehicle Drivers Under 21 (Ages 15-20) in Crashes in Eddy County, 2012-2016

Age ¹	Year					5-Year Total
	2012	2013	2014	2015	2016	
15	0	0	0	0	0	0
16	1	0	0	1	0	2
17	0	0	1	0	0	1
18	1	0	3	0	2	6
19	1	0	4	5	2	12
20	0	2	2	2	0	6
Total Drivers	3	2	10	8	4	27

Table 14: Motor Vehicle Drivers Under 21 (Ages 15-20) in Crashes by Age, Sex and Alcohol-involvement in Eddy County, 2016

Age ¹	Total Drivers				Alcohol-involved Drivers			
	Sex		Total Drivers	Percent of Total	Sex		Total Drivers	Percent of Total
	Male	Female			Male	Female		
15	7	14	21	7%	0	0	0	0%
16	37	19	56	18%	0	0	0	0%
17	37	43	80	25%	0	0	0	0%
18	36	27	63	20%	2	0	2	50%
19	37	20	57	18%	1	1	2	50%
20	16	22	38	12%	0	0	0	0%
Total Drivers	170	145	315	100%	3	1	4	100%

¹ For analysis of drivers under age 21, when the driver age or sex are not identified on the crash report (typically hit-and-run drivers), the driver data are considered unreliable and are excluded from the analysis.

**Table 15: Frequency of Contributing Factors in Crashes
by Crash Severity in Eddy County, 2016**

Contributing Factors	Frequency of Contributing Factor ¹ by Crash Severity			
	Frequency in Fatal Crashes	Frequency in Injury Crashes	Frequency in Property Damage Only Crashes	Frequency in All Crashes
Human	12	527	1,434	1,973
Driver Inattention	3	173	533	709
Failed to Yield Right of Way	1	90	145	236
Following Too Closely	1	60	122	183
Other Improper Driving	0	39	134	173
Improper Backing	0	7	95	102
Made Improper Turn	0	16	71	87
Excessive Speed	1	25	55	81
Passed Stop Sign	0	26	30	56
Disregarded Traffic Signal	0	20	32	52
Alcohol Involved	1	18	32	51
Drove Left Of Center	2	11	35	48
Improper Lane Change	0	2	35	37
Speed Too Fast for Conditions	0	9	28	37
Improper Overtaking	1	4	23	28
Avoid No Contact - Vehicle	0	8	18	26
Avoid No Contact - Other	1	4	14	19
Drug Involved	1	2	10	13
Cell Phone	0	3	9	12
Vehicle Skidded Before Brake	0	1	4	5
Failed to Yield to Emergency Vehicle	0	2	2	4
Failed to Yield to Police Vehicle	0	2	2	4
High Speed Pursuit	0	2	2	4
Texting	0	2	1	3
Driverless Moving Vehicle	0	0	2	2
Pedestrian Error	0	1	0	1
Vehicle	0	14	32	46
Other Mechanical Defect	0	6	18	24
Defective Tires	0	2	8	10
Inadequate Brakes	0	5	4	9
Defective Steering	0	1	2	3
Environment	0	0	1	1
Road Defect	0	0	1	1
Low Visibility Due to Smoke	0	0	0	0
Traffic Control Not Functioning	0	0	0	0
Other	2	289	849	1,140
None	1	251	757	1,009
Other - No Driver Error	1	38	92	131

¹ Multiple contributing factors may be reported for any vehicle in a crash.

Table 16: People in Crashes by Crash Classification and Severity of Injuries in Eddy County, 2016

Crash Classification	People in Crashes by Severity of Injuries					Total People
	Fatalities (Class K)	Suspected Serious Injuries (Class A)	Suspected Minor Injuries (Class B)	Possible Injuries (Class C)	No Apparent Injuries (Class O)	
Animal	0	0	1	8	155	164
Fixed Object	1	1	12	23	185	222
Other (Non-Collision)	0	2	2	0	29	33
Other (Object)	0	0	0	0	32	32
Other Vehicle	3	15	48	305	2,131	2,502
Overturn/Rollover	1	2	11	12	45	71
Parked Vehicle	0	0	2	10	263	275
Pedalcyclist	0	0	2	3	7	12
Pedestrian	0	2	5	2	21	30
Railroad Train	0	0	0	0	0	0
Rollover	2	4	5	0	2	13
Vehicle on Other Road	0	0	0	1	49	50
Missing Data	0	0	0	0	0	0
Total People	7	26	88	364	2,919	3,404

Table 17: Killed or Injured Unbelted People in Crashes by Sex and Age Group in Eddy County, 2016

Age Groups	Unbelted People Killed or Injured ^{1,2}				Total People
	Male	Percent of Male	Female	Percent of Female	
0-4	0	0%	0	0%	0
5-9	0	0%	1	14%	1
10-14	0	0%	0	0%	0
15-19	1	17%	1	14%	2
20-24	1	17%	3	43%	4
25-29	0	0%	0	0%	0
30-34	0	0%	0	0%	0
35-39	2	33%	1	14%	3
40-44	1	17%	0	0%	1
45-49	0	0%	0	0%	0
50-54	1	17%	0	0%	1
55-59	0	0%	0	0%	0
60-64	0	0%	0	0%	0
65-69	0	0%	1	14%	1
70 +	0	0%	0	0%	0
Missing Data	0	0%	0	0%	0
Total People	6	100%	7	100%	13

¹ People injured are in one of three categories: suspected serious injury, suspected minor injury, or possible injury.

² Excludes people in or on buses, heavy trucks, motorcycles, or ATVs.

Figure 8: Seatbelt Use by People in Crashes with Fatal or Suspected Serious Injuries in Eddy County, 2012-2016

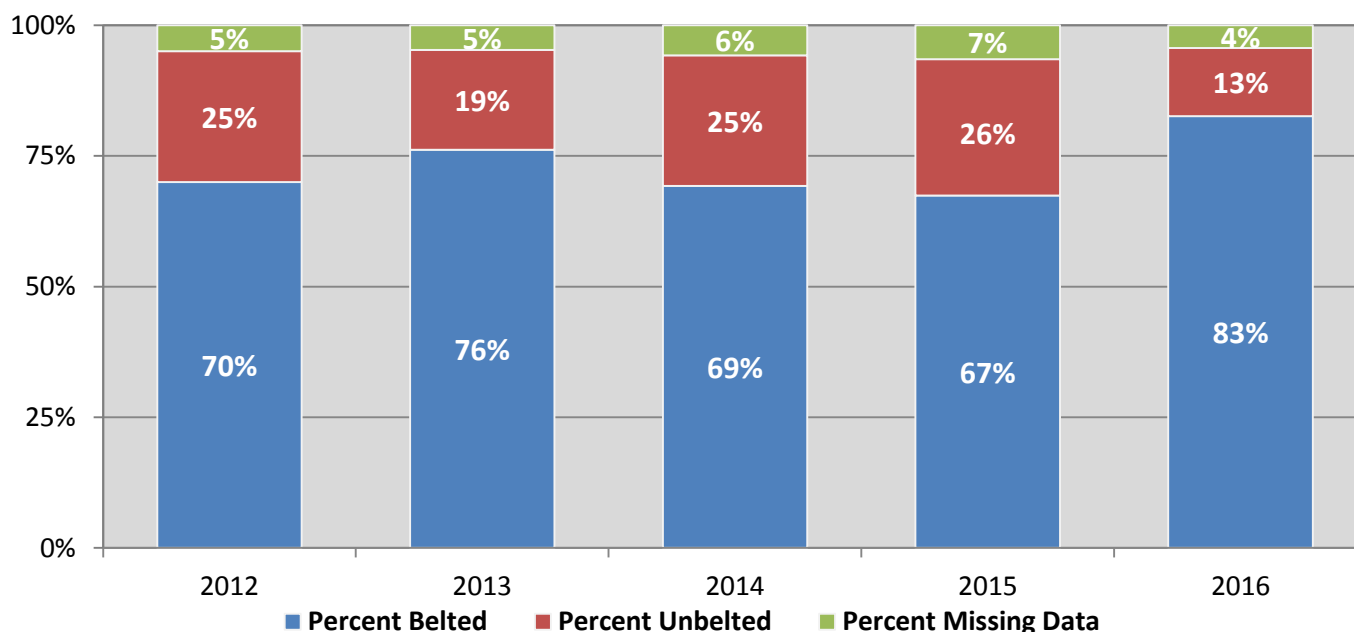
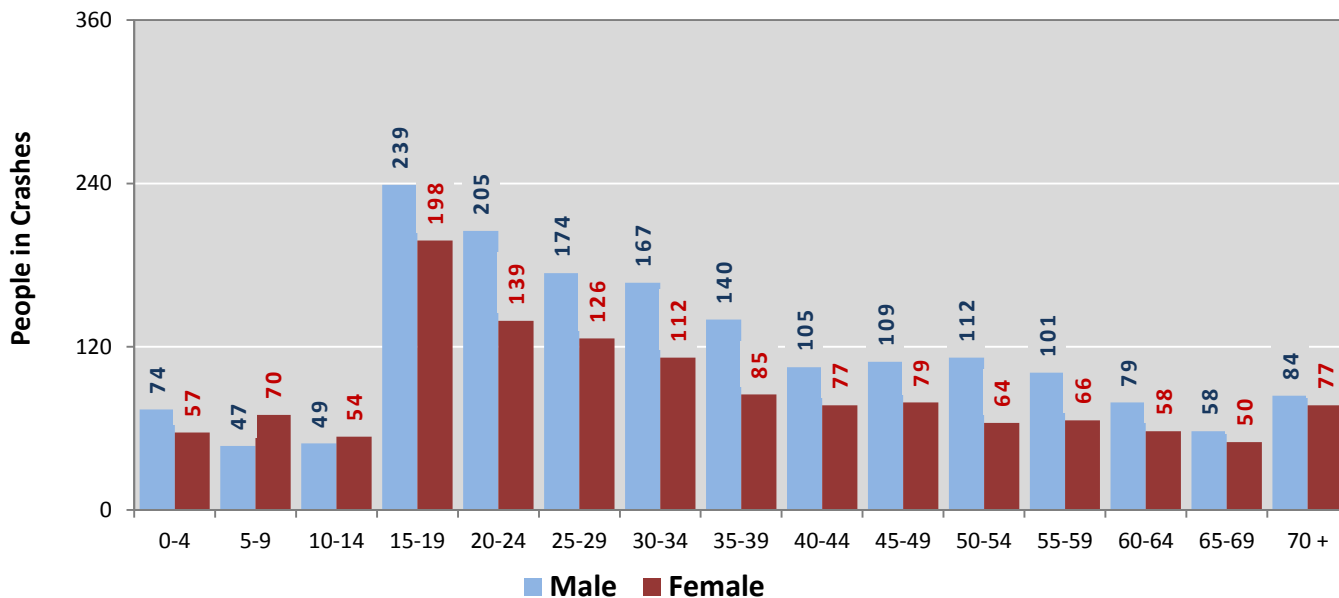
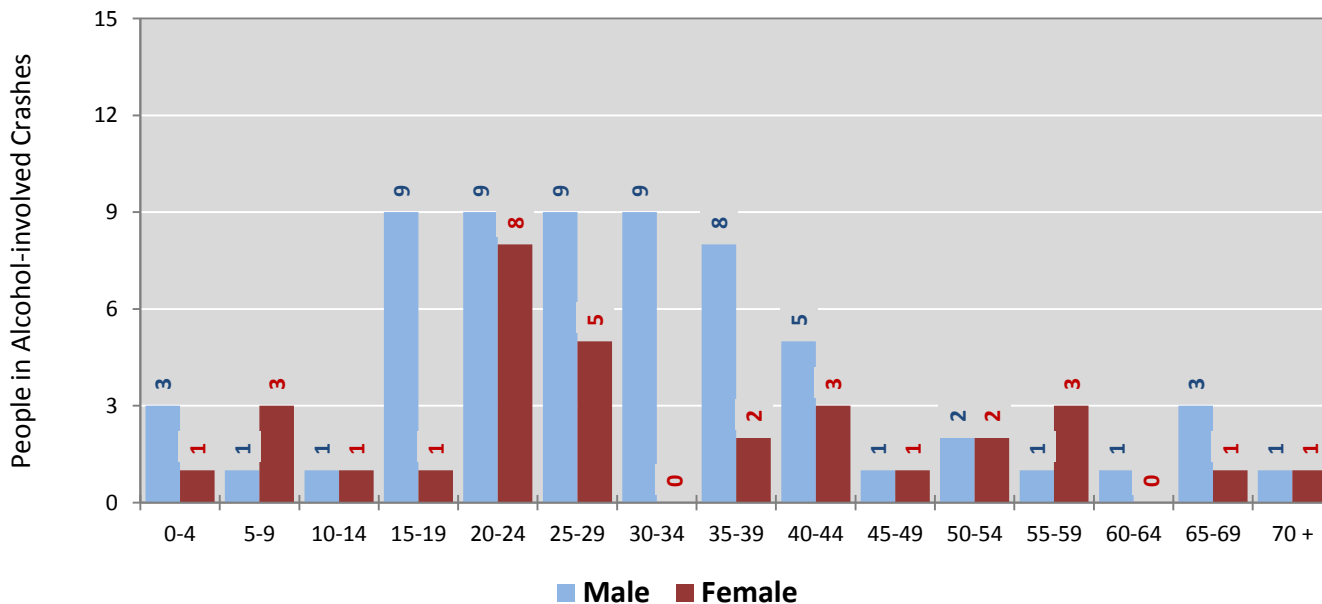


Figure 9: People in Crashes by Age Group and Sex in Eddy County, 2016



* In 2016, Eddy County had 349 people in crashes for which age or sex data were missing.

Figure 10: People in Alcohol-involved Crashes by Age Group and Sex in Eddy County, 2016



* In 2016, Eddy County had 10 people in alcohol-involved crashes for which age or sex data were missing.

Table 18: Pedestrians and Pedalcyclists in Crashes by Age Group in Eddy County, 2012-2016

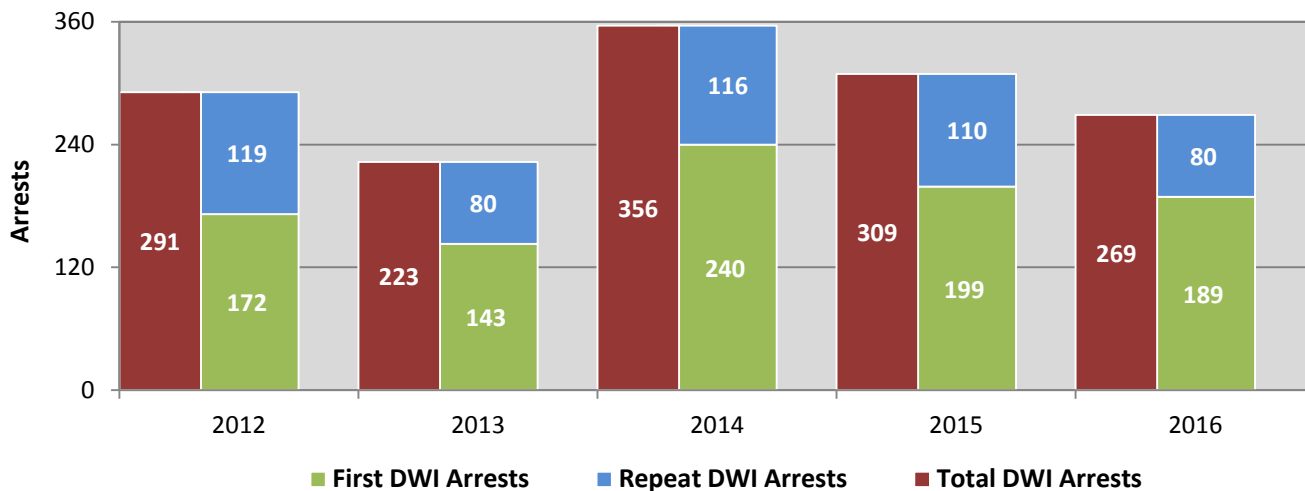
Age Groups	Pedestrians and Pedalcyclists ¹ in Crashes					5-Year Total People
	2012	2013	2014	2015	2016	
0-4	0	0	2	0	0	2
5-9	0	1	3	1	4	9
10-14	3	1	1	3	2	10
15-19	2	3	2	6	2	15
20-24	2	1	3	1	1	8
25-29	3	0	1	2	1	7
30-34	0	2	0	2	0	4
35-39	1	1	2	0	0	4
40-44	1	2	1	0	1	5
45-49	0	0	1	1	2	4
50-54	1	2	0	5	1	9
55-59	1	0	1	0	2	4
60-64	1	0	1	0	1	3
65-69	0	0	0	0	0	0
70 +	0	0	0	0	2	2
Missing Data	0	3	2	6	0	11
Total People	15	16	20	27	19	97

Table 19: Pedestrians and Pedalcyclists in Crashes by Alcohol Involvement and Severity of Injuries in Eddy County, 2016

Alcohol Involvement	Pedestrians and Pedalcyclists ¹ in Crashes					Total People
	Fatalities (Class K)	Suspected Serious Injuries (Class A)	Suspected Minor Injuries (Class B)	Possible Injuries (Class C)	No Apparent Injury (Class O)	
Total Pedalcyclists	0	0	2	2	1	5
Involved	0	0	0	0	0	0
Not Involved	0	0	2	2	1	5
Total Pedestrians	0	2	5	2	5	14
Involved	0	0	0	0	0	0
Not Involved	0	2	5	2	5	14
Total People	0	2	7	4	6	19

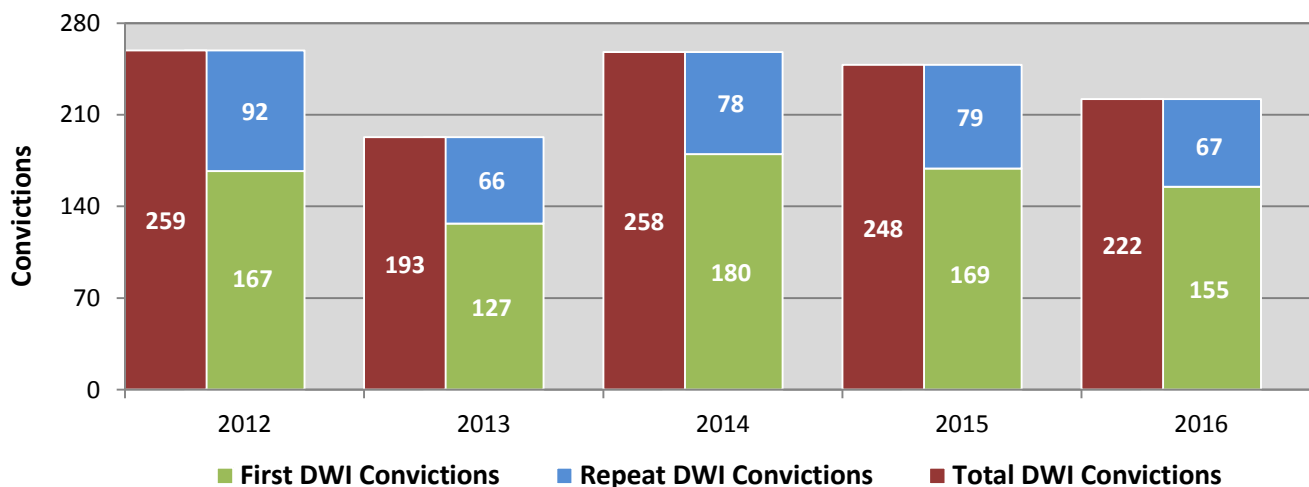
¹ Pedestrians and pedalcyclists are counted as non-motorized vehicles, when involved in a crash with a motor vehicle.

**Figure 11: DWI Arrests in Eddy County,
Showing First and Repeat DWI Arrests, 2012-2016**



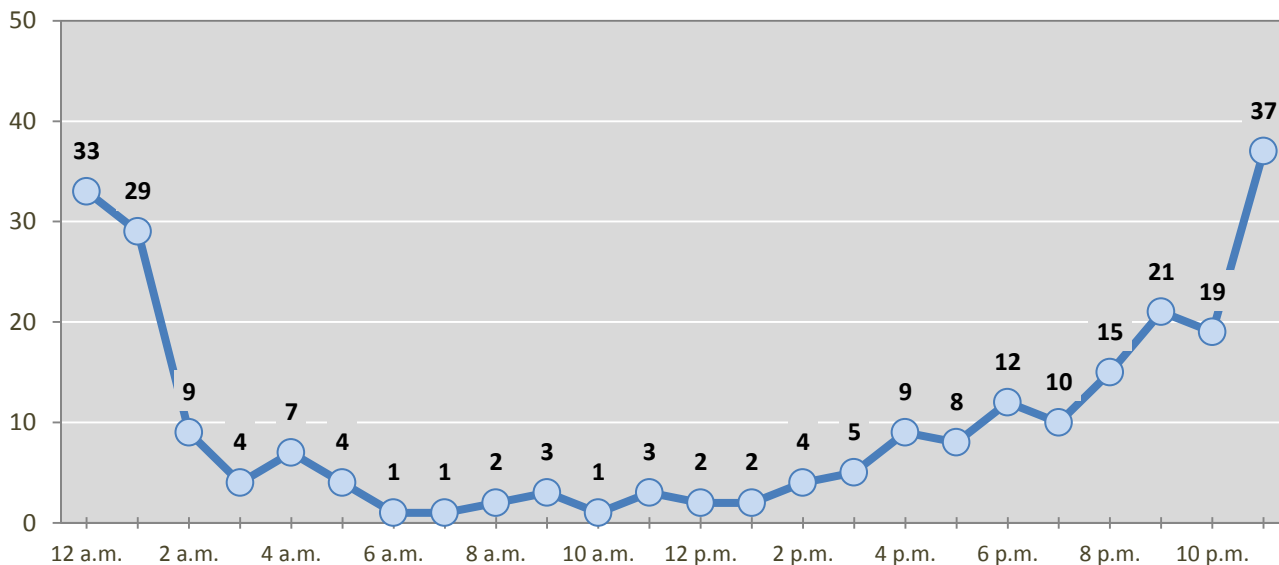
*Values are based upon the year of the arrest.

**Figure 12: DWI Convictions in Eddy County,
Showing First and Repeat DWI Convictions, 2012-2016**



*Values are based upon the year of the conviction.

Figure 13: DWI Arrests by Hour in Eddy County, 2016



* In 2016, Eddy County had 28 arrests for which hour data were missing.

Table 20: DWI Arrests by Day of Week in Eddy County, 2012-2016

Day of Week	Year					5-Year Average
	2012	2013	2014	2015	2016	
Sunday	62	47	74	81	67	66
Monday	23	7	39	23	26	24
Tuesday	20	15	29	29	25	24
Wednesday	32	18	26	19	29	25
Thursday	32	27	41	41	26	33
Friday	53	40	51	49	32	45
Saturday	69	69	96	67	64	73
Total Arrests	291	223	356	309	269	290

Table 21: Driver First DWI Arrests by Age Group in Eddy County, 2012-2016

Age Groups	Driver First DWI Arrests ¹				
	2012	2013	2014	2015	2016
15-19	16	9	11	21	19
20-24	43	39	49	40	37
25-29	27	24	46	36	30
30-34	19	15	43	31	21
35-39	19	18	22	22	19
40-44	17	13	21	16	13
45-49	13	9	15	13	15
50-54	6	7	13	9	9
55-59	6	4	13	5	5
60-64	2	2	2	2	2
65-69	4	0	2	0	3
70 +	0	1	1	0	0
Missing Data	0	2	2	4	16
Total Drivers	172	143	240	199	189

¹ Values are based upon the year of the arrest.

Table 22: Driver Repeat DWI Arrests by Age Group in Eddy County, 2012-2016

Age Groups	Driver Repeat DWI Arrests ¹				
	2012	2013	2014	2015	2016
15-19	1	0	0	1	0
20-24	8	11	12	8	3
25-29	12	16	23	14	13
30-34	16	11	23	19	17
35-39	14	9	17	11	9
40-44	16	11	13	13	12
45-49	17	8	10	13	10
50-54	16	8	9	16	6
55-59	11	3	4	8	6
60-64	5	1	2	3	2
65-69	2	2	2	1	2
70 +	1	0	1	2	0
Missing Data	0	0	0	1	0
Total Drivers	119	80	116	110	80

¹ Values are based upon the year of the arrest.

Table 23: Driver First DWI Convictions by Age Group in Eddy County, 2012-2016

Age Groups	Driver First DWI Convictions ¹				
	2012	2013	2014	2015	2016
15-19	15	7	11	9	16
20-24	44	35	38	34	31
25-29	21	23	30	37	30
30-34	19	14	32	29	20
35-39	16	15	15	13	19
40-44	16	11	19	17	8
45-49	11	9	12	10	11
50-54	14	5	10	8	5
55-59	4	5	9	9	2
60-64	3	1	1	0	2
65-69	4	0	2	1	1
70 +	0	1	0	0	0
Missing Data	0	1	1	2	10
Total Drivers	167	127	180	169	155

¹ Values are based upon the year of the conviction.

Table 24: Driver Repeat DWI Convictions by Age Group in Eddy County, 2012-2016

Age Groups	Driver Repeat DWI Convictions ¹				
	2012	2013	2014	2015	2016
15-19	3	0	0	1	0
20-24	11	8	7	6	4
25-29	9	6	18	11	11
30-34	11	11	12	14	11
35-39	7	11	14	9	5
40-44	11	9	7	8	12
45-49	9	10	9	7	11
50-54	16	3	5	17	4
55-59	7	4	4	2	3
60-64	4	1	2	1	3
65-69	2	3	0	1	2
70 +	2	0	0	1	1
Missing Data	0	0	0	1	0
Total Drivers	92	66	78	79	67

¹ Values are based upon the year of the conviction.

Table 25: Court Disposition of DWI Arrests for Eddy County and the State, 2016

Court Disposition of DWI Arrest ¹	Eddy County	Statewide	Percent of Statewide
Total DWI Arrests	269	10,344	2.6%
DWI Arrests Resulting in Convictions	176	5,541	3.2%
DWI Arrests Resulting in Dismissals ²	16	1,512	1.1%
DWI Arrests Awaiting Disposition	77	3,291	2.3%

¹ These are the number of DWI arrests in 2016 and whether the case resulted in a conviction or dismissal, or is still awaiting court disposition, as reported in the NM MVD Citation Tracking System (CTS) as of December 2017.

² For this table, a very small number of "not guilty" rulings may be included in the category Dismissals.

Table 26: Average Number of Days from Date of DWI Arrest to Date of Court Disposition in Eddy County and the State, 2016

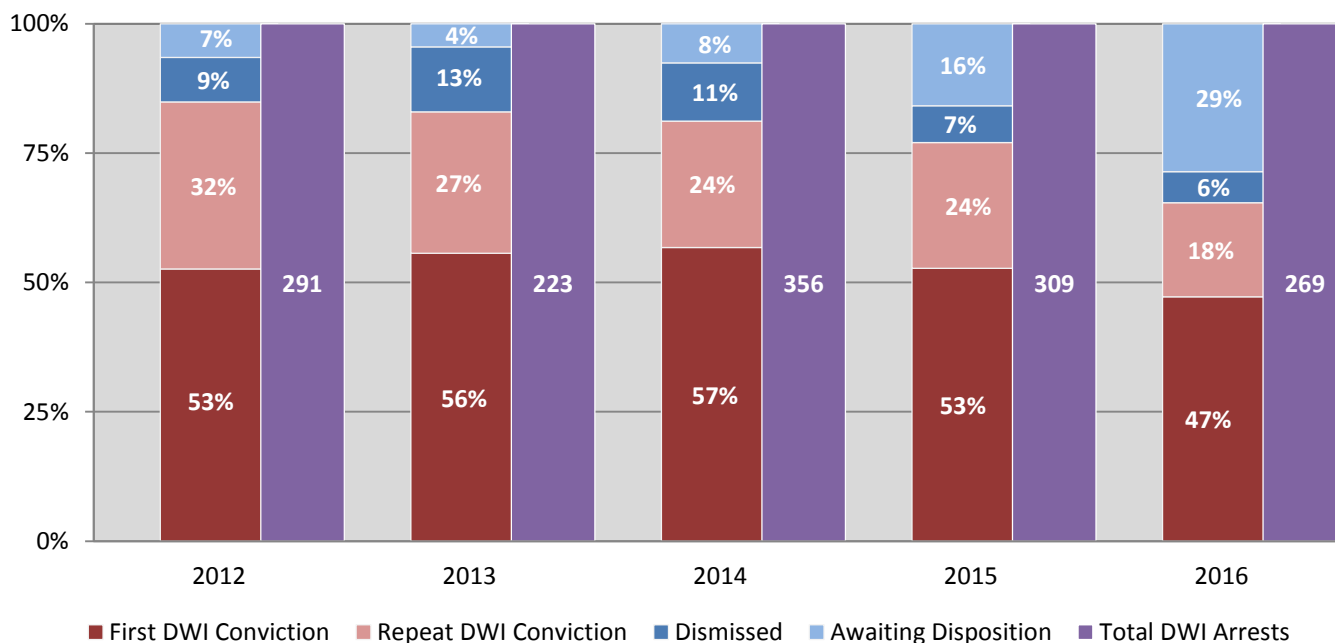
Court Disposition	Average Number of Days		Deviation from Statewide Average
	Eddy County	Statewide	
DWI Conviction	125	157	-32
DWI Dismissal	144	179	-35

Table 27: Court Disposition of DWI Arrests in Eddy County, 2012-2016

Year of DWI Arrest ¹	Court Disposition				Total DWI Arrests
	First DWI Conviction	Repeat DWI Conviction	Dismissed	Awaiting Disposition	
2012	153	94	25	19	291
2013	124	61	28	10	223
2014	202	87	40	27	356
2015	163	75	22	49	309
2016	127	49	16	77	269

¹ Values are based upon the year of the arrest.

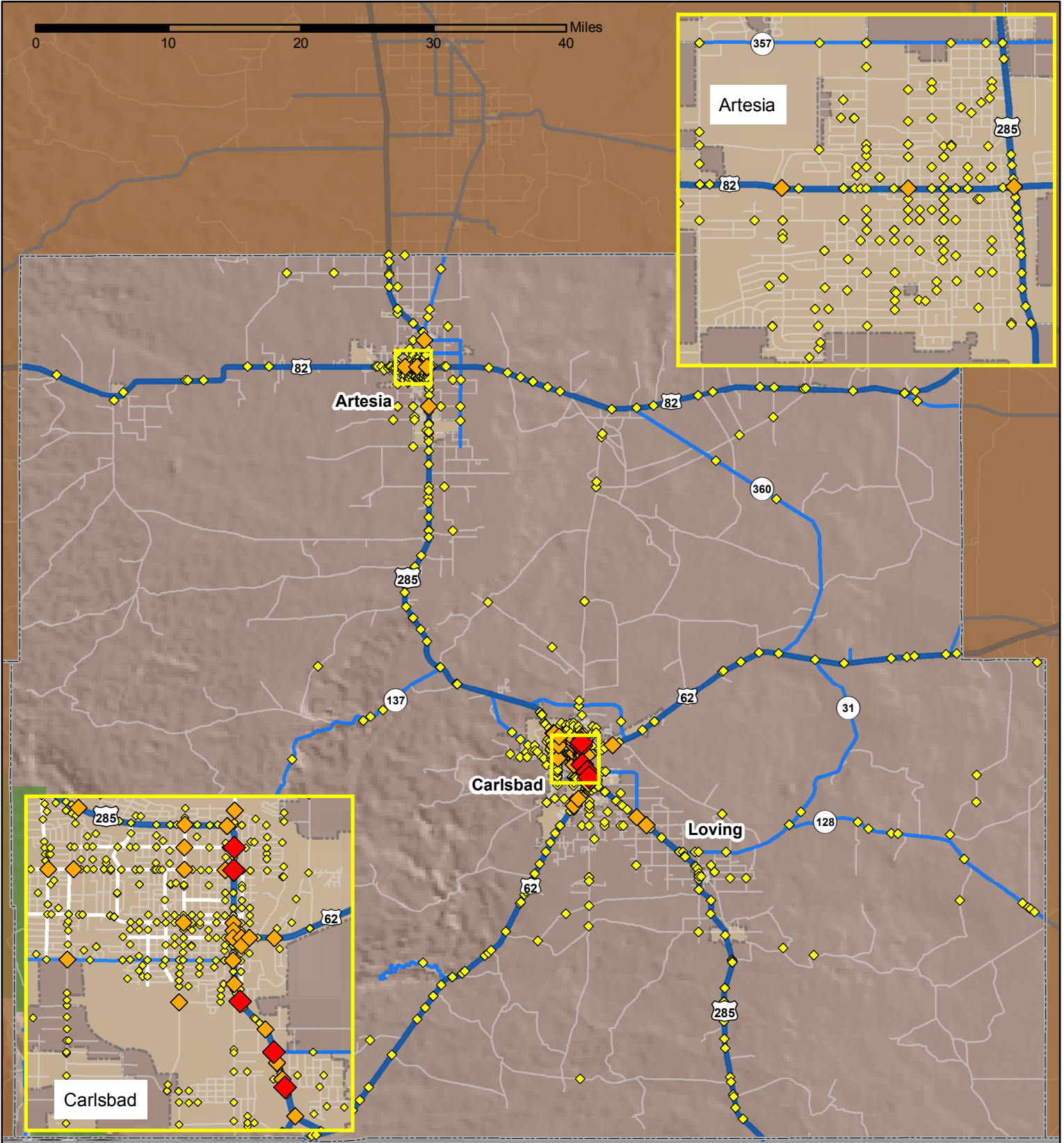
Figure 14: Court Dispositions by Percentage of DWI Arrests in Eddy County, 2012-2016



*Table 27 contains the values used to calculate percentages shown in Figure 14.

Crashes in Eddy County, New Mexico, 2016

Map created by the Traffic Research Unit, Geospatial & Population Studies at UNM



Legend

- Forest & Wildlife Areas
- Reservations & Pueblos
- County Boundaries
- City Boundaries
- Interstate Highways
- U.S. Highways
- State Highways
- Streets & Roadways

Crashes 2016

- 1 - 4 Crashes
- 5 - 11 Crashes
- 12 - 24 Crashes

