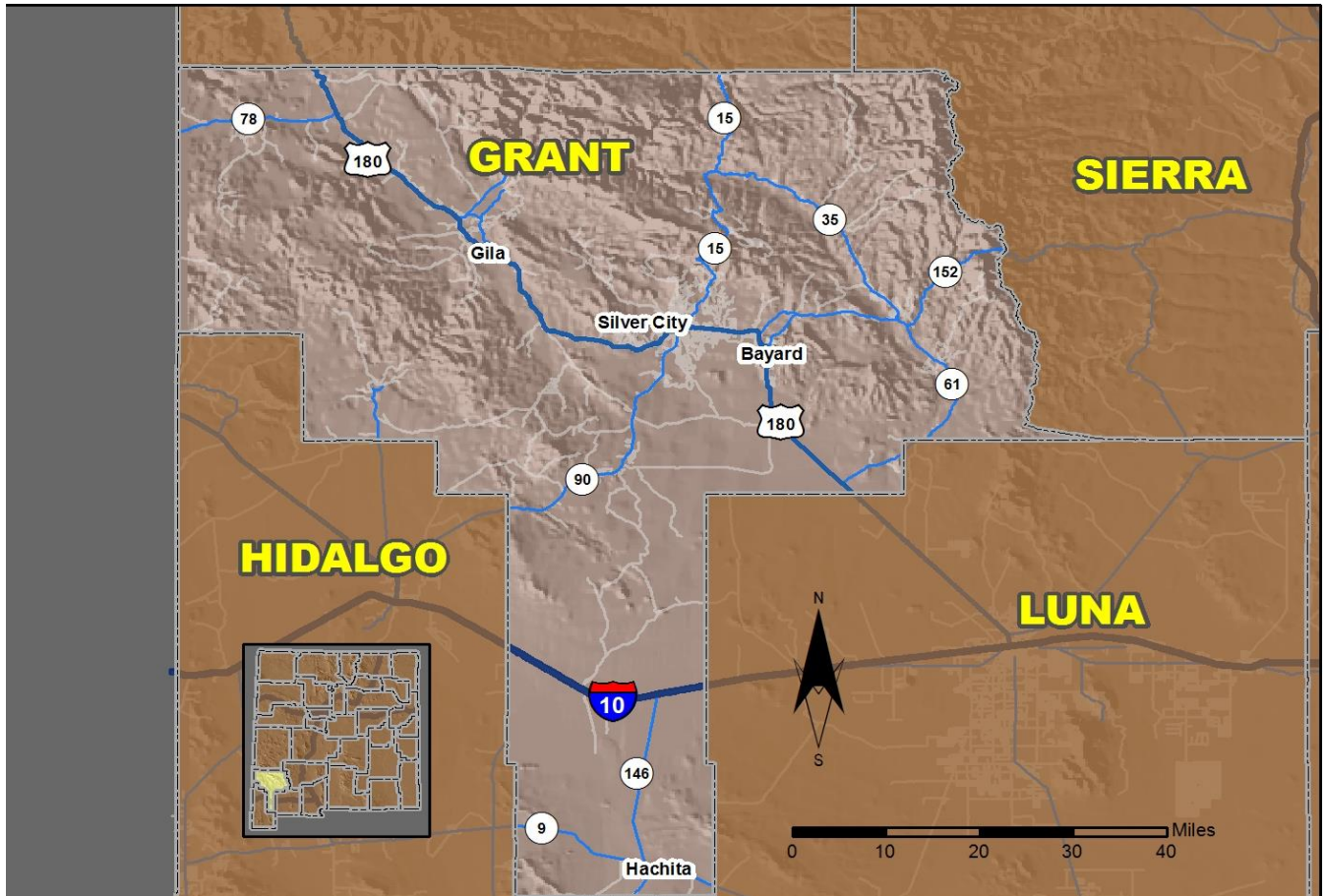


2016 Community Report

Grant County



Produced for the New Mexico Department of Transportation,
Traffic Safety Division, Traffic Records Bureau,
Under Contract 5801 by the University of New Mexico,
Geospatial and Population Studies, Traffic Research Unit

Distributed in compliance with New Mexico Statute 66-7-214
as a reference source regarding New Mexico traffic crashes

For the purposes of this report, data are compiled by the University of New Mexico, Geospatial and Population Studies, Traffic Research Unit (TRU), on behalf of the New Mexico Department of Transportation (NMDOT). Data in this report may differ from that in other data sources, such as the Federal Fatality Analysis Reporting System (FARS), due to the timing of publications and rules for how data are compiled and maintained in Federal vs. State databases. If you have questions regarding this report, please contact the Traffic Safety Division at 505-827-0427.

<http://tru.unm.edu/Crash-Reports/Community-Reports/>

Definitions

Aggravated DWI – A driver arrested for 1) driving with a BAC of 0.16 or higher, 2) driving under the influence of alcohol or drugs and causing bodily injury to a human being as a result, or 3) driving under the influence of alcohol or drugs and refusing to submit to a BAC test at the time of arrest for DWI.

Alcohol-involved Crash – A crash for which the Uniform Crash Report indicated that 1) a DWI citation was issued, 2) alcohol was a contributing factor, or 3) a person in control of a vehicle (including a pedestrian or pedalcyclist) was suspected of being under the influence of alcohol.

Alcohol-involved Driver – A person in control of a vehicle who was cited for DWI or indicated on the Uniform Crash Report as being either suspected or determined by testing to be under the influence of alcohol. There can be multiple alcohol-involved drivers in a single alcohol-involved crash.

Crash – A reported incident on a public roadway involving one or more motor vehicles that resulted in death, personal injury, or at least \$500 in property damage. Crashes on private property (such as a parking lot) are not included.

DWI Arrest (Citation) – In this report, a DWI arrest (a.k.a. a DWI citation) is a driver arrested for either DWI or aggravated DWI. New Mexico’s legal limit for presumption of driving while intoxicated (DWI) is 0.08 for non-commercial drivers older than 21 years of age, 0.04 for commercial vehicle drivers, and 0.02 for drivers younger than 21 years of age.

DWI Conviction – A driver convicted of driving under the intoxicating influence of alcohol, narcotics, or pathogenic drugs, including aggravated DWI.

Fatal Crash – A crash in which at least one person was killed. More than one person can be killed in a single fatal crash.

Fatalities – The number of people killed in a crash. The terms “killed” and “deaths” are synonymous with “fatalities.” A fatality is crash-related if it occurs at the time of the crash or if the person(s) involved in the crash dies within 30 days.

Injury Crash – A reported crash in which at least one person was injured. Injury crashes involve at least one suspected serious injury (Class A), suspected minor injury (Class B), or possible injury (Class C). Fatal crashes are not included.

Missing Data – An indication that the applicable field on the UCR form was left blank or contained an invalid code. Starting with crashes that occurred in 2012, improvements in the identification of missing data in the NMDOT crash database led to an increase in the reported amount of missing data.

Pedalcyclist – A person riding a mechanism of transport that is powered solely by pedals (a.k.a. bicyclist).

Pedestrian – A person on foot, walking, running, jogging, hiking, sitting or lying down who is involved in a motor vehicle traffic crash.

Sources

Crash Data – New Mexico Department of Transportation, Traffic Safety Division, Traffic Records Bureau, Traffic Crash Database, as of the report date below. Crash data are compiled using NMDOT Uniform Crash Reports (UCR), submitted by law enforcement agencies in the state, for any incident on a public roadway involving one or more motor vehicles that resulted in death, injury, or at least \$500 in property damage. These reports are processed by the NMDOT Traffic Records Bureau and analyzed by the University of New Mexico, Geospatial and Population Studies, Traffic Research Unit (TRU).

DWI Citation Tracking System (CTS) – New Mexico Taxation and Revenue Department (NM TRD), Motor Vehicle Division (MVD), DWI Citation Tracking System (CTS), as of December 2017. Repeat offenders are identified by the combination of account key, arrest date, and citation number. County data are based upon the county where the arrest took place. City data are based upon the city where the offender resides.

Urban Areas – New Mexico Department of Transportation, Asset Management and Planning, 2010 U.S. Census Urbanized Area Boundaries, NMDOT-Adjusted, and U.S. Census Urban Clusters, August 21, 2013. In crashes before 2013, “urban” was defined as a town or city with a population of at least 2,500 people.

Table 1: Total Crashes and Alcohol-involved Crashes by Crash Severity in Grant County, 2007-2016

Year	Total Crashes				Alcohol-involved Crashes			
	Fatal	Injury	Property Damage Only	Total	Fatal	Injury	Property Damage Only	Total
2007	9	187	485	681	3	18	21	42
2008	11	183	470	664	4	23	21	48
2009	1	139	423	563	1	17	15	33
2010	7	113	324	444	3	12	8	23
2011	4	147	378	529	2	17	13	32
2012	5	129	501	635	1	15	21	37
2013	5	159	434	598	1	19	15	35
2014	2	141	484	627	0	18	19	37
2015	3	140	462	605	1	13	18	32
2016	3	150	400	553	3	14	14	31

Figure 1: Alcohol-involved Fatal and Injury Crashes Compared with Non-alcohol-involved Fatal and Injury Crashes in Grant County, 2007-2016

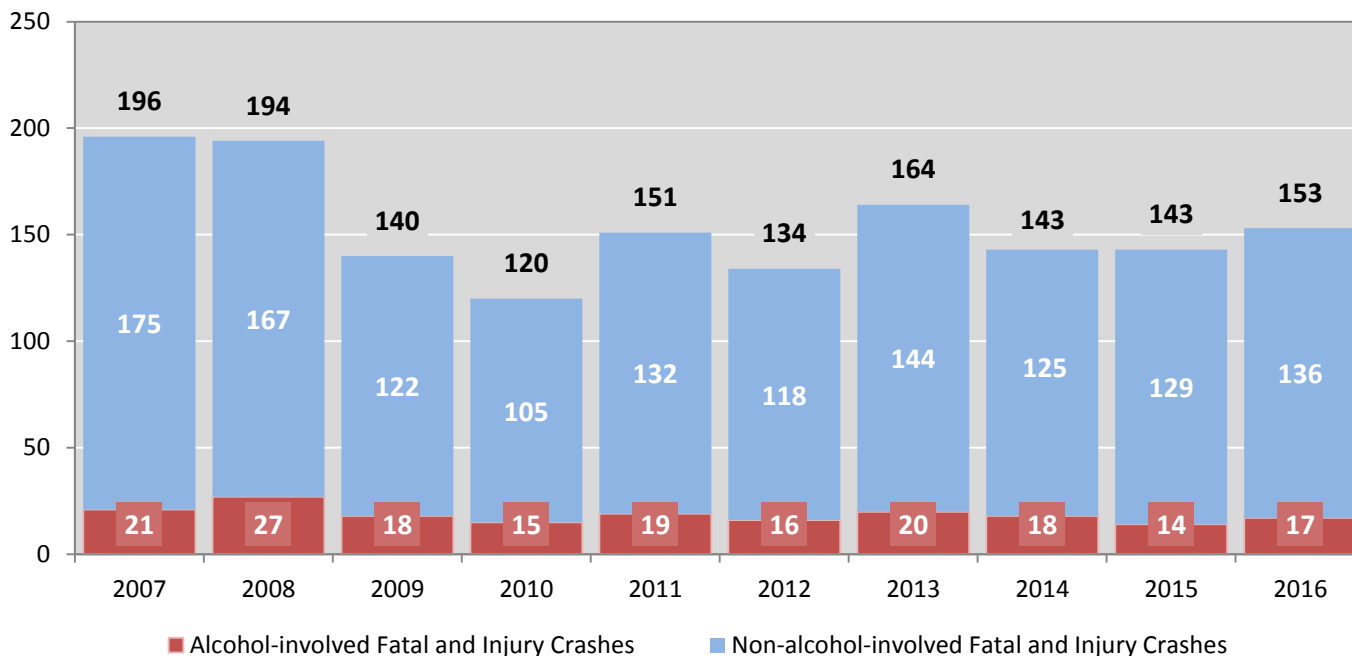


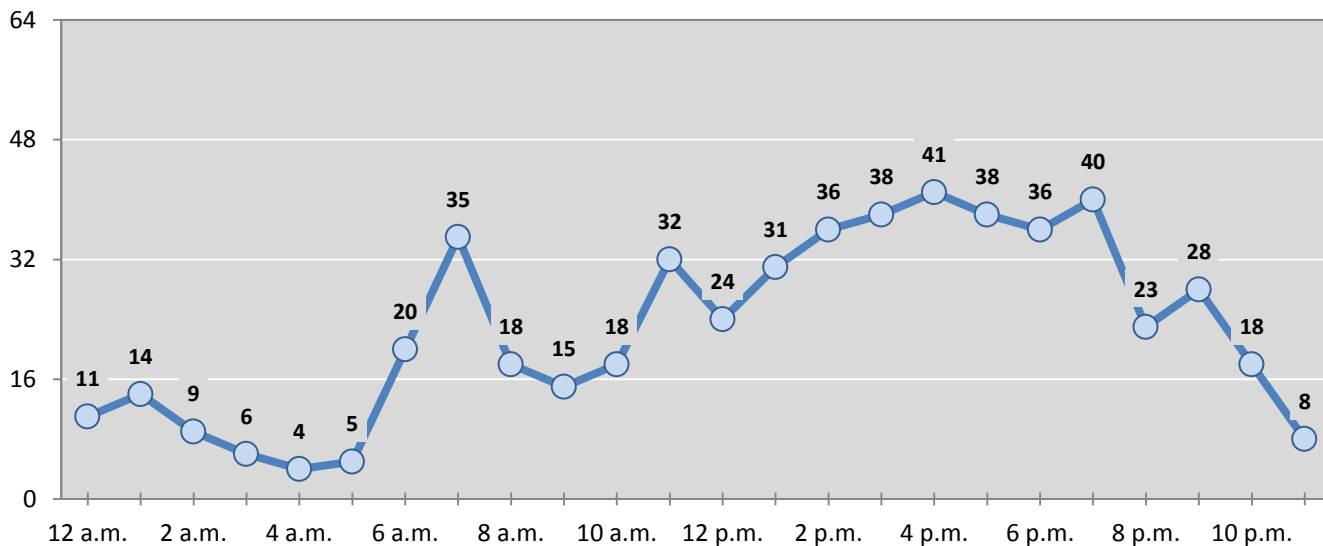
Table 2: Crashes by Month in Grant County, 2012-2016

Month	Crashes					5-Year Average
	2012	2013	2014	2015	2016	
January	30	53	51	40	47	44
February	31	40	40	45	49	41
March	51	45	40	51	54	48
April	40	71	81	41	53	57
May	44	63	45	44	24	44
June	65	48	54	57	38	52
July	76	38	43	35	54	49
August	69	49	53	44	41	51
September	56	46	59	58	53	54
October	64	61	55	65	51	59
November	49	37	51	54	49	48
December	60	47	55	71	40	55
Total Crashes	635	598	627	605	553	604

Table 3: Alcohol-involved Crashes by Month in Grant County, 2012-2016

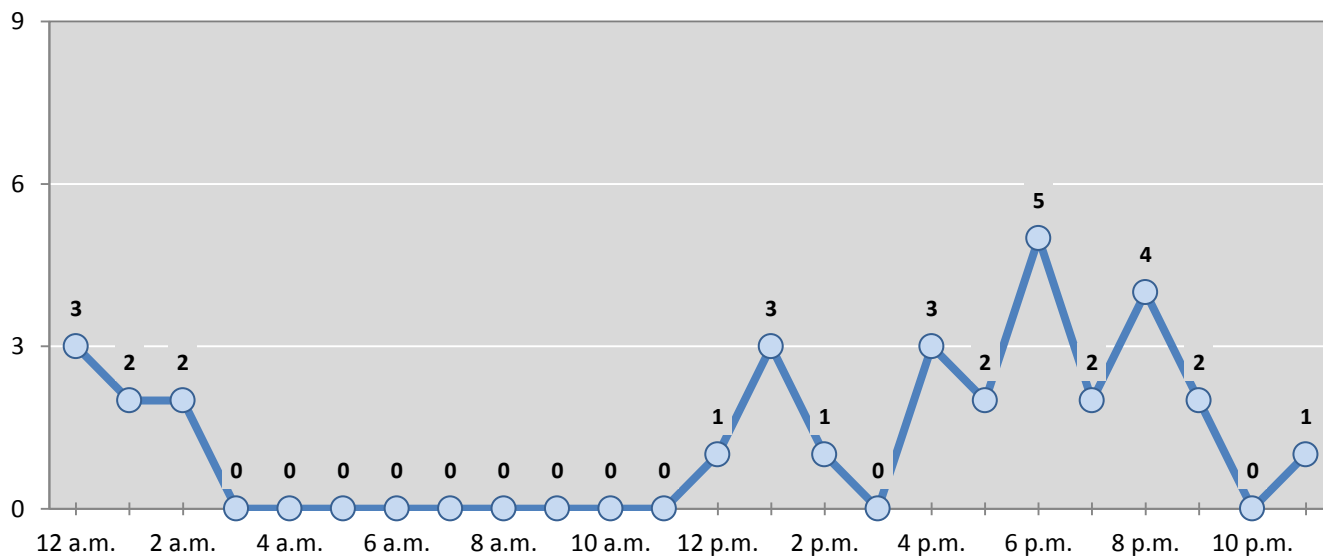
Month	Alcohol-involved Crashes					5-Year Average
	2012	2013	2014	2015	2016	
January	3	6	1	2	3	3
February	4	2	4	1	3	3
March	1	2	2	5	4	3
April	1	5	2	2	2	2
May	2	1	3	0	1	1
June	6	2	1	5	0	3
July	8	5	1	3	6	5
August	2	4	5	1	2	3
September	3	3	4	1	5	3
October	2	0	6	3	1	2
November	2	2	4	5	3	3
December	3	3	4	4	1	3
Total Crashes	37	35	37	32	31	34

Figure 2: Crashes by Hour in Grant County, 2016



* In 2016, Grant County had 5 crashes for which hour data were missing.

Figure 3: Alcohol-involved Crashes by Hour in Grant County, 2016



* In 2016, Grant County had 0 alcohol-involved crashes for which hour data were missing.

Table 4: Alcohol-involved Crashes by Day of Week in Grant County, 2012-2016

Day of Week	Alcohol-involved Crashes					5-Year Average
	2012	2013	2014	2015	2016	
Sunday	6	6	3	6	7	6
Monday	3	4	2	3	5	3
Tuesday	3	4	6	2	4	4
Wednesday	6	2	5	3	4	4
Thursday	7	6	8	6	3	6
Friday	7	5	7	6	4	6
Saturday	5	8	6	6	4	6
Total Crashes	37	35	37	32	31	34

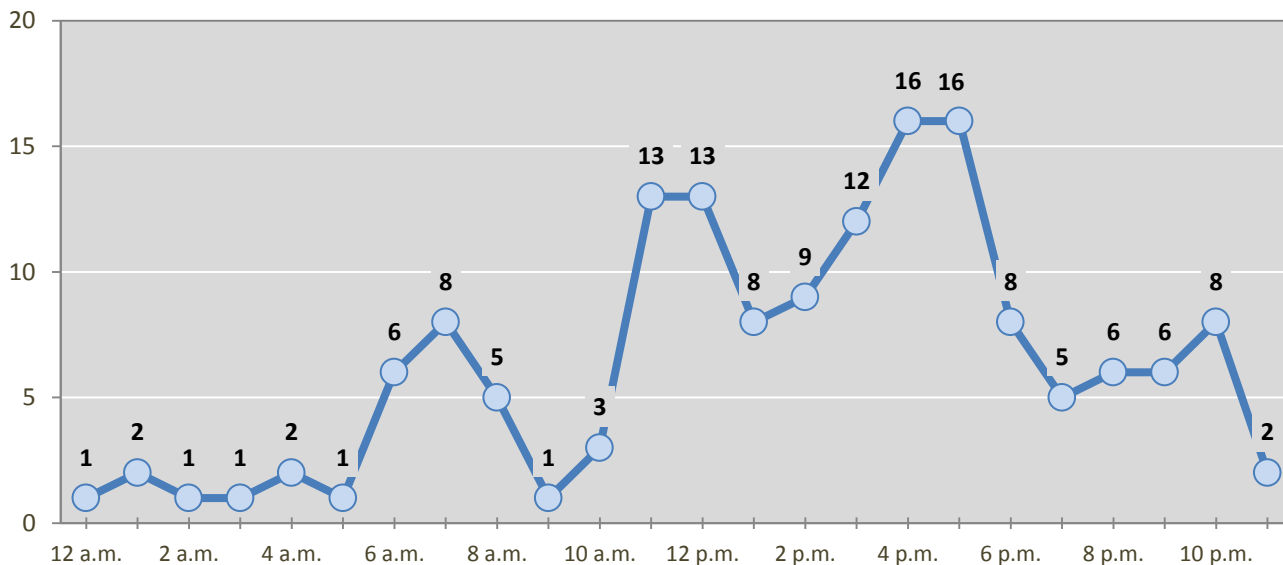
Table 5: Fatal and Injury Crashes by Day of Week in Grant County, 2012-2016

Day of Week	Fatal and Injury Crashes					5-Year Average
	2012	2013	2014	2015	2016	
Sunday	17	18	13	14	15	15
Monday	18	21	22	26	27	23
Tuesday	21	19	22	21	31	23
Wednesday	22	21	23	18	19	21
Thursday	15	30	22	28	24	24
Friday	25	24	23	16	23	22
Saturday	16	31	18	20	14	20
Total Crashes	134	164	143	143	153	147

Table 6: Pedestrian and Pedalcyclist Crashes by Day of Week in Grant County, 2012-2016

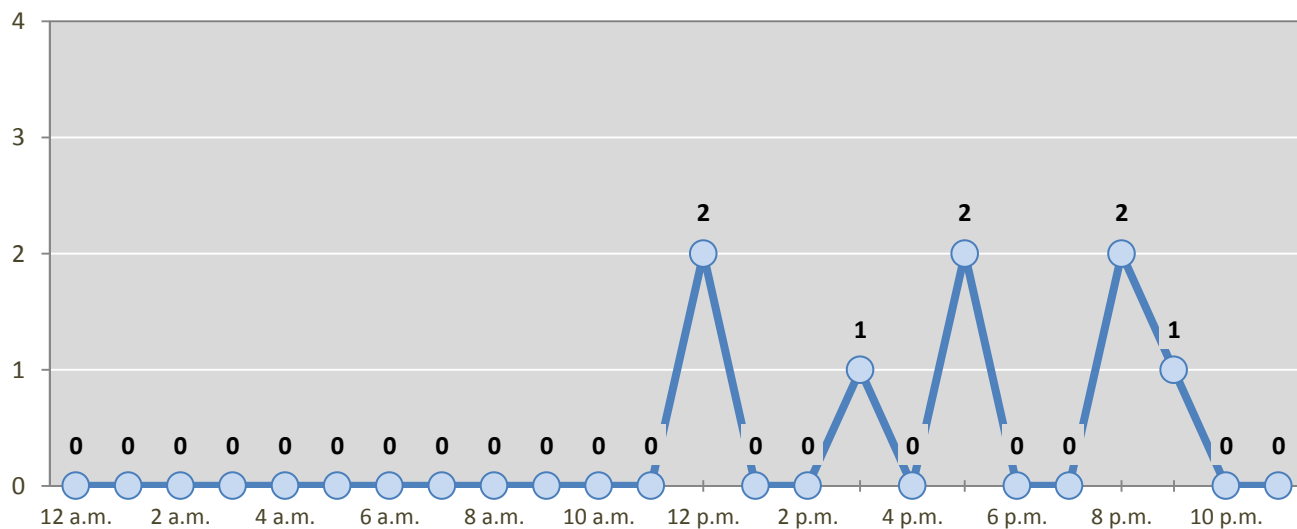
Day of Week	Pedestrian and Pedalcyclist Crashes					5-Year Average
	2012	2013	2014	2015	2016	
Sunday	1	0	0	0	3	1
Monday	0	1	2	2	1	1
Tuesday	1	3	2	2	1	2
Wednesday	3	4	3	1	1	2
Thursday	0	2	2	1	1	1
Friday	3	4	2	0	1	2
Saturday	2	4	1	1	0	2
Total Crashes	10	18	12	7	8	11

Figure 4: Fatal and Injury Crashes by Hour in Grant County, 2016



* In 2016, Grant County had 0 crashes for which hour data were missing.

Figure 5: Pedestrian and Pedalcyclist Crashes by Hour in Grant County, 2016



* In 2016, Grant County had 0 crashes for which hour data were missing.

Table 7: Severity of Injuries to People in Crashes by Rural and Urban Location in Grant County, 2016

Urban and Rural Locations by Alcohol-involvement	People in Crashes by Severity of Injuries					Total People
	Fatalities (Class K)	Suspected Serious Injuries (Class A)	Suspected Minor Injuries (Class B)	Possible Injuries (Class C)	No Apparent Injuries (Class O)	
People in Alcohol-involved Crashes	3	3	15	5	39	65
Urban	1	3	5	1	20	30
Rural Non-Interstate	2	0	10	4	19	35
Rural Interstate	0	0	0	0	0	0
People in Crashes	3	5	63	133	971	1,175
Urban	1	5	27	102	606	741
Rural Non-Interstate	2	0	30	24	322	378
Rural Interstate	0	0	6	7	43	56
Percent in Alcohol-involved Crashes	100%	60%	24%	4%	4%	6%

Table 8: Total Crashes by Roadway System and Crash Severity in Grant County, 2012-2016

Crash Severity by System	Crashes by Year					5-Year Average
	2012	2013	2014	2015	2016	
Total Rural Interstate	19	24	18	18	24	21
Fatal Crash	2	1	1	1	0	1
Injury Crash	6	7	6	4	7	6
Property Damage Only Crash	11	16	11	13	17	14
Total Rural Non-Interstate	190	185	239	218	214	209
Fatal Crash	3	3	1	1	2	2
Injury Crash	39	46	50	36	43	43
Property Damage Only Crash	148	136	188	181	169	164
Total Urban	426	389	370	369	315	374
Fatal Crash	0	1	0	1	1	1
Injury Crash	84	106	85	100	100	95
Property Damage Only Crash	342	282	285	268	214	278

Table 9: Total Crashes by Crash Classification in Grant County, 2012-2016

Crash Classification	Total Crashes by Year					5-Year Average
	2012	2013	2014	2015	2016	
Animal	125	121	134	140	138	132
Fixed Object	84	76	95	76	68	80
Other (Non-Collision)	15	12	14	8	24	15
Other (Object)	11	19	20	11	7	14
Other Vehicle	275	240	237	257	230	248
Overturn/Rollover	44	60	60	18	36	44
Parked Vehicle	61	42	48	56	36	49
Pedalcyclist	4	5	7	1	2	4
Pedestrian	6	13	5	6	6	7
Railroad Train	0	1	1	0	0	0
Rollover	0	0	0	25	6	6
Vehicle on Other Road	2	6	1	3	0	2
Missing Data	8	3	5	4	0	4
Total Crashes	635	598	627	605	553	604

Table 10: Vehicles in Crashes by Vehicle Type in Grant County, 2012-2016

Vehicle Type ¹	Vehicles in Crashes by Vehicle Type					5-Year Average
	2012	2013	2014	2015	2016	
Bus	1	3	4	2	0	2
Motorcycle	25	34	19	17	17	22
Passenger	423	304	356	344	342	354
Pedalcyclist	4	5	7	1	2	4
Pedestrian	6	14	5	7	8	8
Pickup	259	250	228	258	226	244
Semi	34	28	44	23	27	31
Van/SUV/4WD	141	139	180	174	168	160
Other Vehicle	48	71	33	77	18	49
Missing Data	68	74	85	48	40	63
Total Vehicles	1,009	922	961	951	848	938

¹ Pedestrians and pedalcyclists are counted as non-motorized vehicles, when involved in a crash with a motor vehicle. See Page 17 for data on drivers of non-motorized vehicles in crashes (i.e. pedestrians and pedalcyclists).

Table 11: Motor Vehicle Drivers in Crashes by Vehicle Type and Age Group in Grant County, 2016

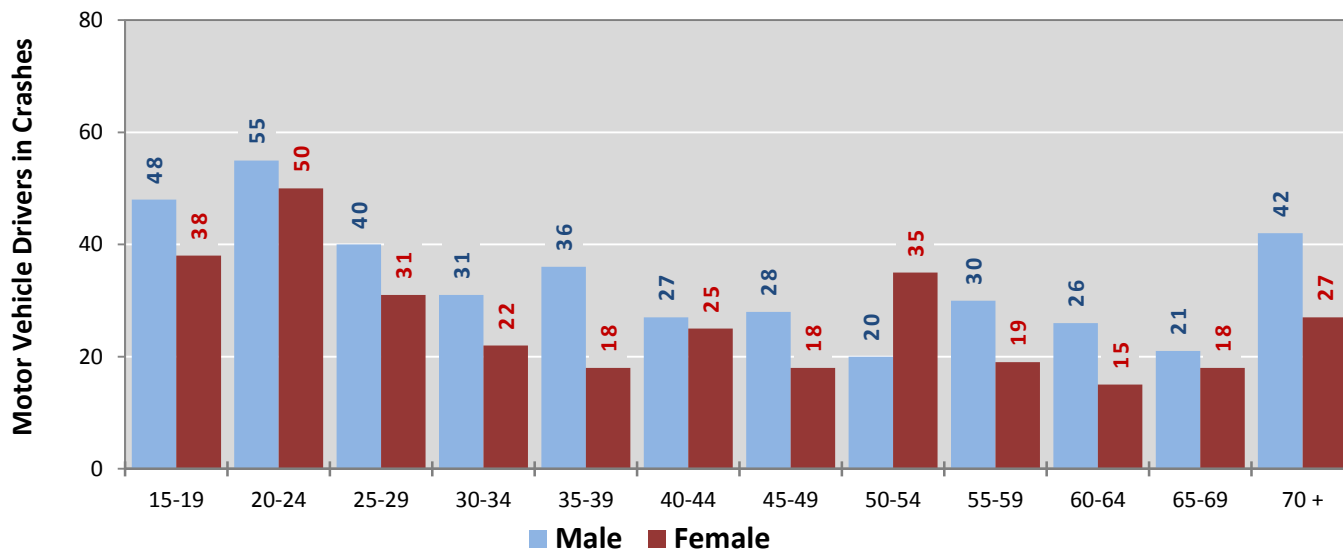
Age Groups	Motor Vehicle ¹ Drivers by Vehicle Type and Age Group								Total Drivers
	Bus	Motor-cycle	Passenger	Pickup	Semi	Van 4WD SUV	Other Vehicle	Missing Data	
15-19	0	2	39	27	0	17	1	0	86
20-24	0	3	61	23	2	13	3	0	105
25-29	0	0	38	16	2	13	1	1	71
30-34	0	2	23	12	2	13	1	0	53
35-39	0	3	19	13	3	16	1	0	55
40-44	0	2	22	11	5	12	0	0	52
45-49	0	1	10	16	6	12	0	1	46
50-54	0	0	15	23	2	13	2	0	55
55-59	0	3	20	12	2	12	0	0	49
60-64	0	0	10	19	3	8	1	0	41
65-69	0	0	15	11	0	10	3	0	39
70 +	0	0	30	20	0	16	2	1	69
Missing Data	0	1	40	23	0	13	3	37	117
Total Drivers	0	17	342	226	27	168	18	40	838

Table 12: Alcohol-involved Motor Vehicle Drivers in Crashes by Vehicle Type and Age Group in Grant County, 2016

Age Groups	Alcohol-involved Motor Vehicle ¹ Drivers by Vehicle Type and Age Group								Total Drivers
	Bus	Motor-cycle	Passenger	Pickup	Semi	Van 4WD SUV	Other Vehicle	Missing Data	
15-19	0	1	0	2	0	1	0	0	4
20-24	0	0	2	2	0	1	0	0	5
25-29	0	0	2	2	0	0	0	0	4
30-34	0	0	0	2	0	1	0	0	3
35-39	0	1	1	1	0	0	0	0	3
40-44	0	0	2	1	0	0	0	0	3
45-49	0	0	0	1	0	0	0	0	1
50-54	0	0	0	1	0	0	0	0	1
55-59	0	0	0	1	0	0	0	0	1
60-64	0	0	0	1	0	0	0	0	1
65-69	0	0	0	0	0	0	0	0	0
70 +	0	0	0	0	0	1	0	0	1
Missing Data	0	0	1	0	0	0	0	0	1
Total Drivers	0	2	8	14	0	4	0	0	28

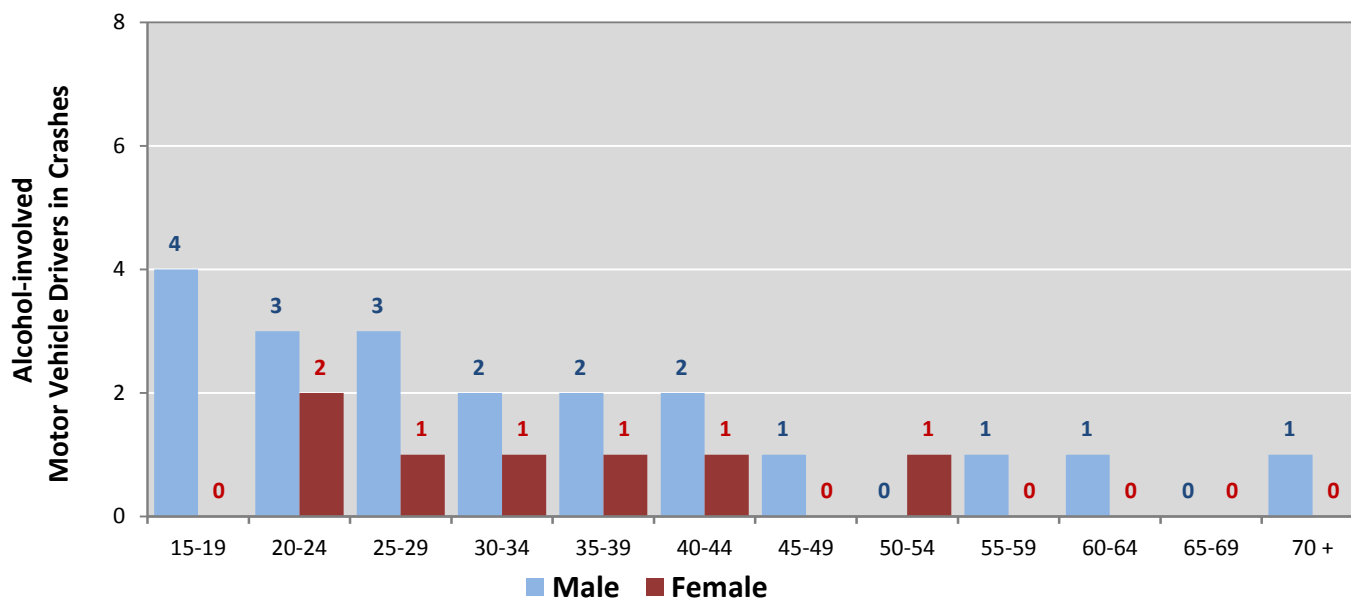
¹ See Page 17 for data on drivers of non-motorized vehicles in crashes (i.e. pedestrians and pedalcyclists).

Figure 6: Motor Vehicle Drivers in Crashes by Age Group and Sex in Grant County, 2016



* In 2016, Grant County had 118 drivers in crashes for which age or sex data were missing.

Figure 7: Alcohol-involved Motor Vehicle Drivers in Crashes by Age Group and Sex in Grant County, 2016



* In 2016, Grant County had 1 drivers in crashes for which age or sex data were missing.

Table 13: Alcohol-involved Motor Vehicle Drivers Under 21 (Ages 15-20) in Crashes in Grant County, 2012-2016

Age ¹	Year					5-Year Total
	2012	2013	2014	2015	2016	
15	0	0	0	0	0	0
16	0	0	0	1	1	2
17	0	0	0	0	1	1
18	2	4	3	0	1	10
19	1	2	0	0	1	4
20	1	1	0	1	1	4
Total Drivers	4	7	3	2	5	21

Table 14: Motor Vehicle Drivers Under 21 (Ages 15-20) in Crashes by Age, Sex and Alcohol-involvement in Grant County, 2016

Age ¹	Total Drivers				Alcohol-involved Drivers			
	Sex		Total Drivers	Percent of Total	Sex		Total Drivers	Percent of Total
	Male	Female			Male	Female		
15	3	1	4	4%	0	0	0	0%
16	11	10	21	20%	1	0	1	20%
17	15	11	26	25%	1	0	1	20%
18	9	10	19	18%	1	0	1	20%
19	10	6	16	15%	1	0	1	20%
20	8	12	20	19%	1	0	1	20%
Total Drivers	56	50	106	100%	5	0	5	100%

¹ For analysis of drivers under age 21, when the driver age or sex are not identified on the crash report (typically hit-and-run drivers), the driver data are considered unreliable and are excluded from the analysis.

**Table 15: Frequency of Contributing Factors in Crashes
by Crash Severity in Grant County, 2016**

Contributing Factors	Frequency of Contributing Factor ¹ by Crash Severity			
	Frequency in Fatal Crashes	Frequency in Injury Crashes	Frequency in Property Damage Only Crashes	Frequency in All Crashes
Human	7	200	346	553
Driver Inattention	2	67	109	178
Following Too Closely	0	25	31	56
Failed to Yield Right of Way	0	19	31	50
Other Improper Driving	0	16	34	50
Excessive Speed	1	23	23	47
Alcohol Involved	4	14	14	32
Speed Too Fast for Conditions	0	6	19	25
Avoid No Contact - Vehicle	0	9	10	19
Drove Left Of Center	0	10	9	19
Improper Backing	0	1	18	19
Made Improper Turn	0	1	14	15
Avoid No Contact - Other	0	2	8	10
Disregarded Traffic Signal	0	3	4	7
Improper Overtaking	0	0	7	7
Passed Stop Sign	0	1	4	5
Improper Lane Change	0	0	3	3
Driverless Moving Vehicle	0	0	2	2
Failed to Yield to Emergency Vehicle	0	1	1	2
Vehicle Skidded Before Brake	0	1	1	2
Cell Phone	0	0	1	1
Failed to Yield to Police Vehicle	0	0	1	1
High Speed Pursuit	0	0	1	1
Texting	0	1	0	1
Drug Involved	0	0	1	1
Pedestrian Error	0	0	0	0
Vehicle	0	6	8	14
Inadequate Brakes	0	4	2	6
Defective Tires	0	1	3	4
Other Mechanical Defect	0	1	2	3
Defective Steering	0	0	1	1
Environment	0	0	0	0
Low Visibility Due to Smoke	0	0	0	0
Road Defect	0	0	0	0
Traffic Control Not Functioning	0	0	0	0
Other	0	115	326	441
None	0	90	198	288
Other - No Driver Error	0	25	128	153

¹ Multiple contributing factors may be reported for any vehicle in a crash.

Table 16: People in Crashes by Crash Classification and Severity of Injuries in Grant County, 2016

Crash Classification	People in Crashes by Severity of Injuries					Total People
	Fatalities (Class K)	Suspected Serious Injuries (Class A)	Suspected Minor Injuries (Class B)	Possible Injuries (Class C)	No Apparent Injuries (Class O)	
Animal	0	0	3	6	212	221
Fixed Object	1	1	12	10	62	86
Other (Non-Collision)	0	1	7	3	30	41
Other (Object)	0	0	0	0	12	12
Other Vehicle	0	1	23	98	528	650
Overturn/Rollover	0	0	12	11	33	56
Parked Vehicle	0	0	2	1	78	81
Pedalcyclist	0	1	0	1	4	6
Pedestrian	2	1	1	2	7	13
Railroad Train	0	0	0	0	0	0
Rollover	0	0	3	1	5	9
Vehicle on Other Road	0	0	0	0	0	0
Missing Data	0	0	0	0	0	0
Total People	3	5	63	133	971	1,175

Table 17: Killed or Injured Unbelted People in Crashes by Sex and Age Group in Grant County, 2016

Age Groups	Unbelted People Killed or Injured ^{1,2}				Total People
	Male	Percent of Male	Female	Percent of Female	
0-4	0	0%	0	0%	0
5-9	0	0%	0	0%	0
10-14	0	0%	0	0%	0
15-19	2	50%	0	0%	2
20-24	0	0%	2	100%	2
25-29	1	25%	0	0%	1
30-34	0	0%	0	0%	0
35-39	0	0%	0	0%	0
40-44	0	0%	0	0%	0
45-49	0	0%	0	0%	0
50-54	0	0%	0	0%	0
55-59	0	0%	0	0%	0
60-64	1	25%	0	0%	1
65-69	0	0%	0	0%	0
70 +	0	0%	0	0%	0
Missing Data	0	0%	0	0%	0
Total People	4	100%	2	100%	6

¹ People injured are in one of three categories: suspected serious injury, suspected minor injury, or possible injury.

² Excludes people in or on buses, heavy trucks, motorcycles, or ATVs.

Figure 8: Seatbelt Use by People in Crashes with Fatal or Suspected Serious Injuries in Grant County, 2012-2016

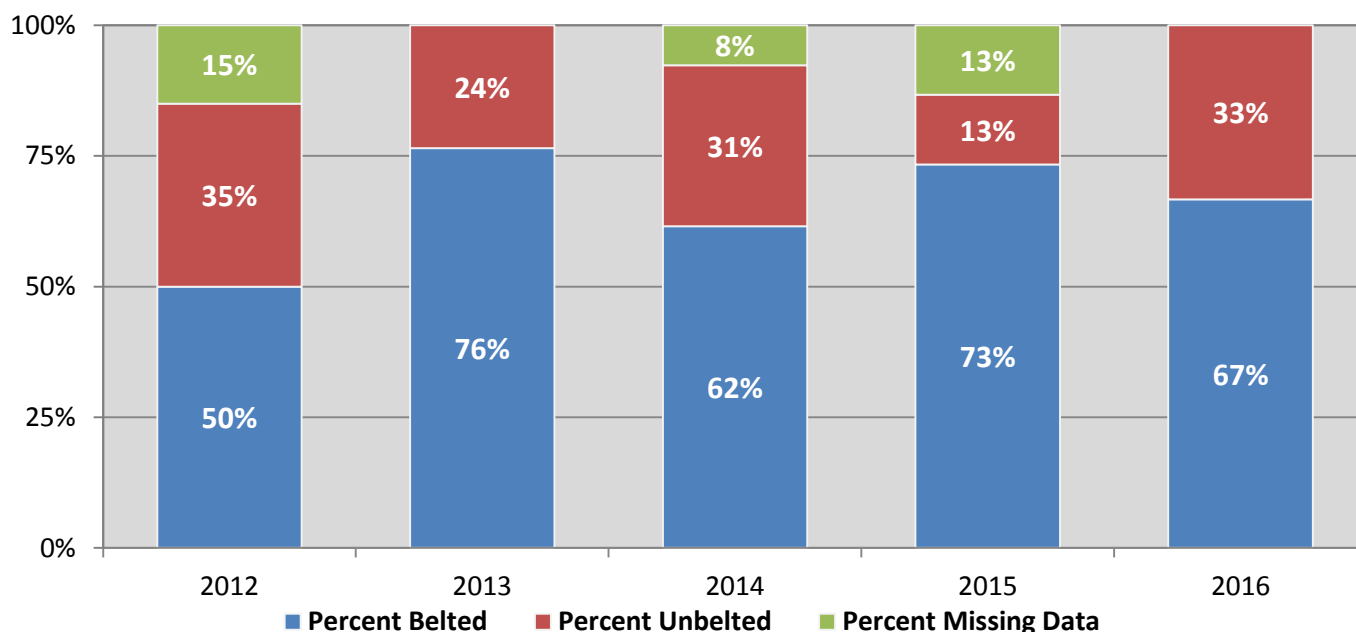
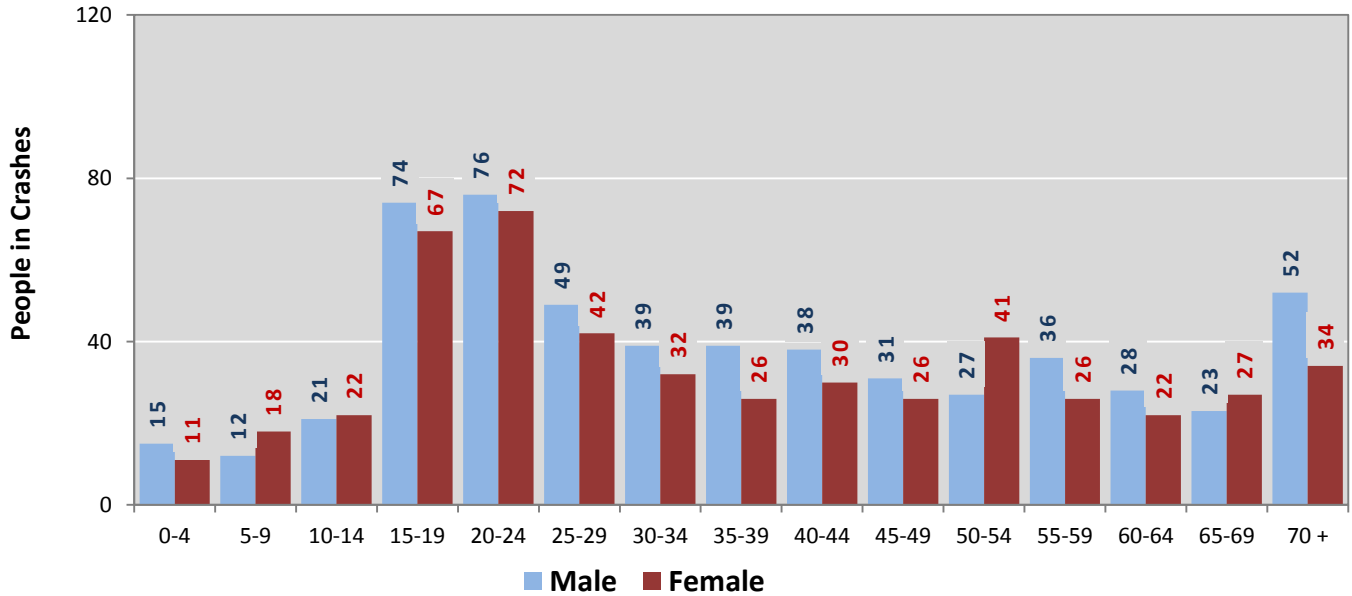
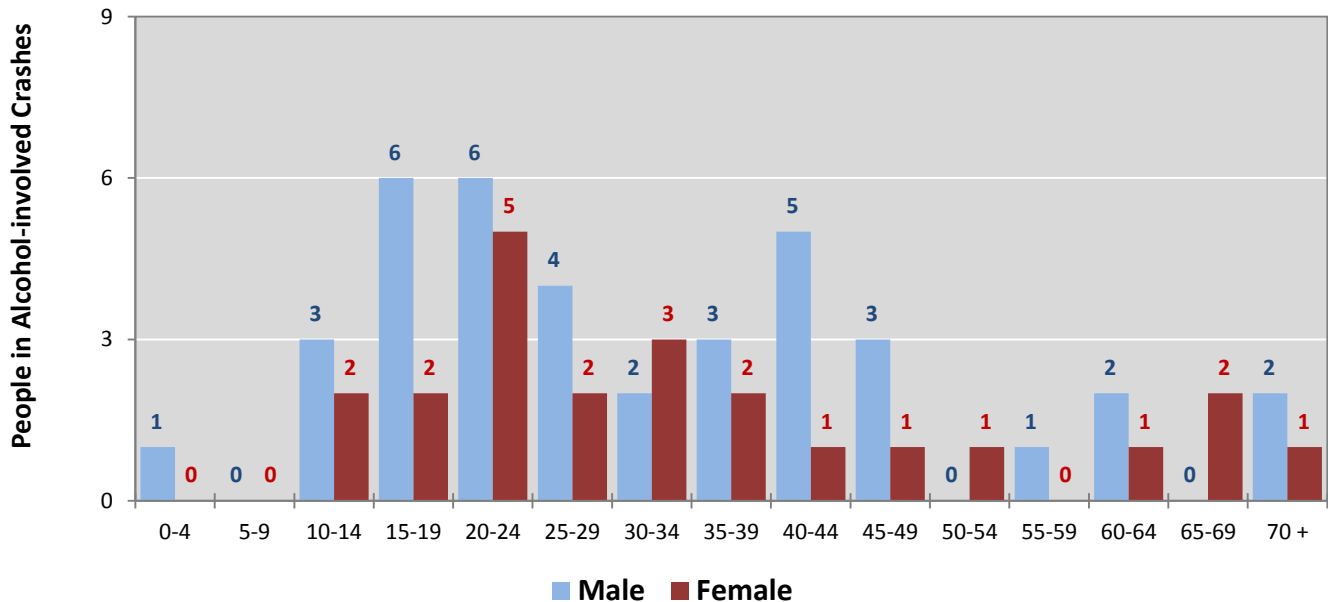


Figure 9: People in Crashes by Age Group and Sex in Grant County, 2016



* In 2016, Grant County had 119 people in crashes for which age or sex data were missing.

Figure 10: People in Alcohol-involved Crashes by Age Group and Sex in Grant County, 2016



* In 2016, Grant County had 4 people in alcohol-involved crashes for which age or sex data were missing.

Table 18: Pedestrians and Pedalcyclists in Crashes by Age Group in Grant County, 2012-2016

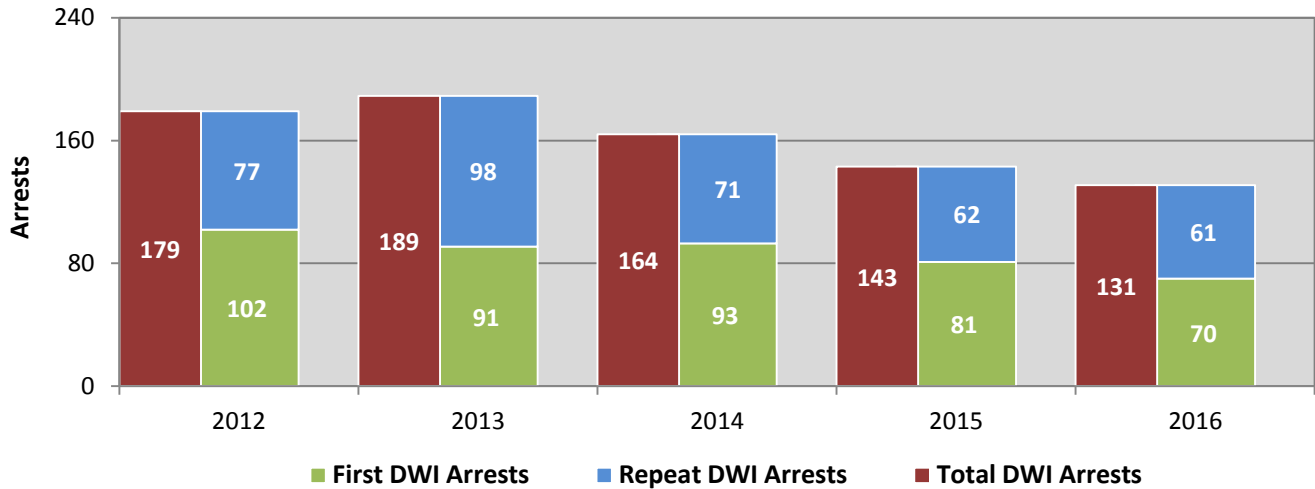
Age Groups	Pedestrians and Pedalcyclists ¹ in Crashes					5-Year Total People
	2012	2013	2014	2015	2016	
0-4	0	0	0	0	0	0
5-9	0	1	0	1	1	3
10-14	3	2	0	0	0	5
15-19	0	0	1	1	0	2
20-24	1	1	0	1	3	6
25-29	1	2	4	1	0	8
30-34	0	1	2	0	0	3
35-39	1	2	1	0	2	6
40-44	2	0	1	0	0	3
45-49	0	0	0	0	0	0
50-54	1	0	0	1	1	3
55-59	0	0	1	1	0	2
60-64	0	0	0	1	0	1
65-69	0	0	0	0	2	2
70 +	1	3	0	1	1	6
Missing Data	0	7	2	0	0	9
Total People	10	19	12	8	10	59

Table 19: Pedestrians and Pedalcyclists in Crashes by Alcohol Involvement and Severity of Injuries in Grant County, 2016

Alcohol Involvement	Pedestrians and Pedalcyclists ¹ in Crashes					Total People
	Fatalities (Class K)	Suspected Serious Injuries (Class A)	Suspected Minor Injuries (Class B)	Possible Injuries (Class C)	No Apparent Injury (Class O)	
Total Pedalcyclists	0	1	0	1	0	2
Involved	0	0	0	0	0	0
Not Involved	0	1	0	1	0	2
Total Pedestrians	2	1	1	2	2	8
Involved	2	1	1	0	0	4
Not Involved	0	0	0	2	2	4
Total People	2	2	1	3	2	10

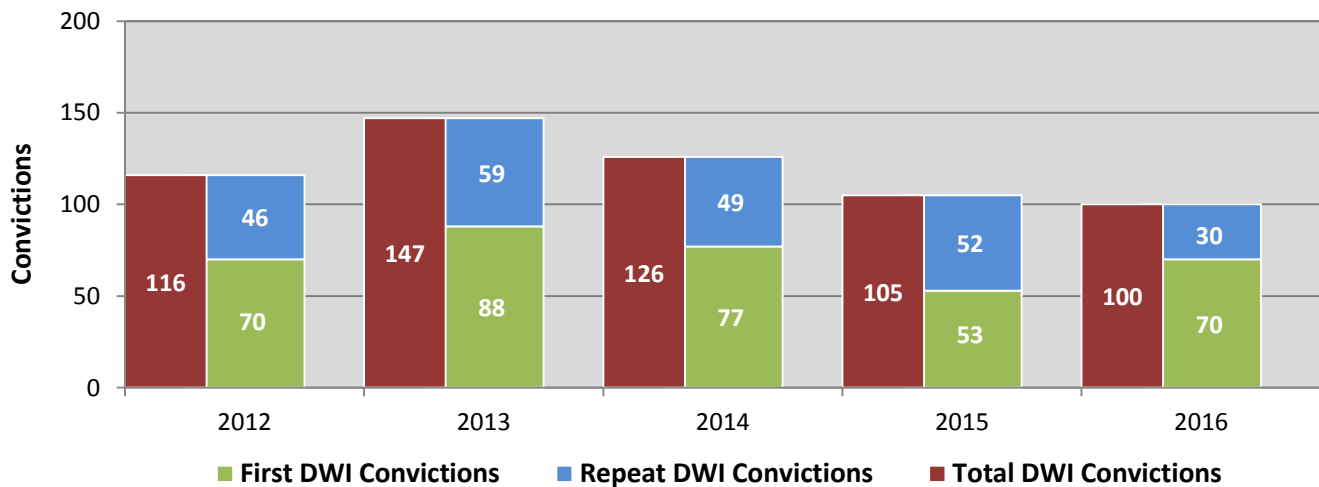
¹ Pedestrians and pedalcyclists are counted as non-motorized vehicles, when involved in a crash with a motor vehicle.

**Figure 11: DWI Arrests in Grant County,
Showing First and Repeat DWI Arrests, 2012-2016**



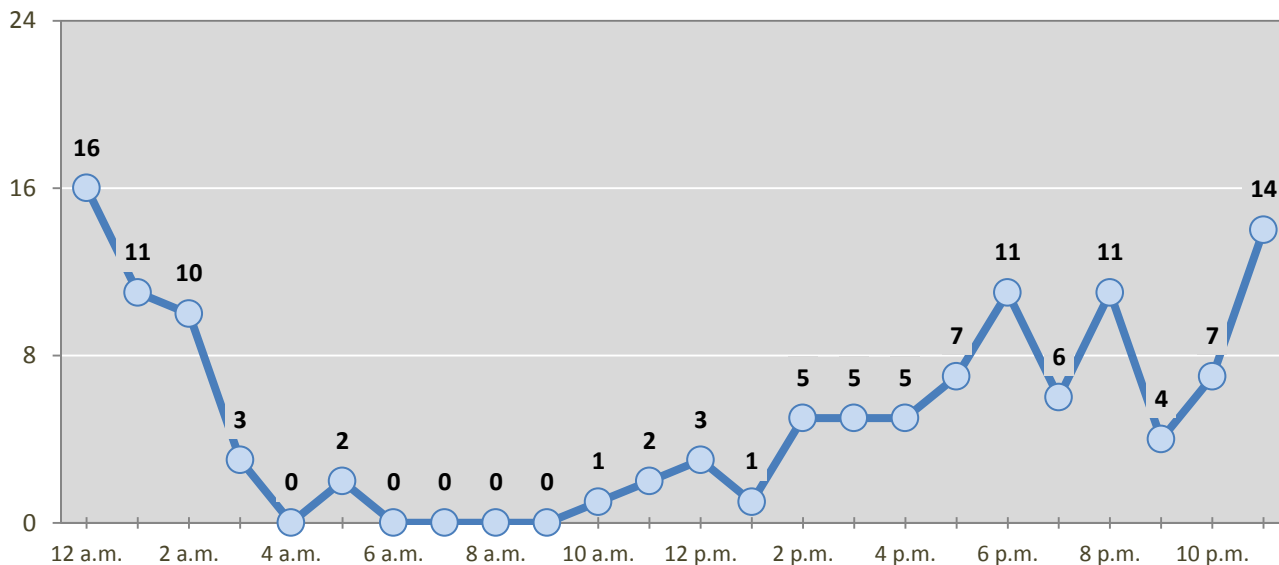
*Values are based upon the year of the arrest.

**Figure 12: DWI Convictions in Grant County,
Showing First and Repeat DWI Convictions, 2012-2016**



*Values are based upon the year of the conviction.

Figure 13: DWI Arrests by Hour in Grant County, 2016



* In 2016, Grant County had 7 arrests for which hour data were missing.

Table 20: DWI Arrests by Day of Week in Grant County, 2012-2016

Day of Week	Year					5-Year Average
	2012	2013	2014	2015	2016	
Sunday	32	31	28	34	25	30
Monday	17	16	19	8	14	15
Tuesday	13	20	19	11	14	15
Wednesday	20	22	17	15	11	17
Thursday	26	18	17	17	12	18
Friday	31	45	27	23	26	30
Saturday	40	37	37	35	29	36
Total Arrests	179	189	164	143	131	161

Table 21: Driver First DWI Arrests by Age Group in Grant County, 2012-2016

Age Groups	Driver First DWI Arrests ¹				
	2012	2013	2014	2015	2016
15-19	13	17	8	4	12
20-24	13	19	27	21	17
25-29	19	20	10	16	9
30-34	11	4	8	14	8
35-39	8	5	10	6	4
40-44	13	9	10	3	8
45-49	10	5	6	4	4
50-54	6	4	4	2	3
55-59	1	4	5	3	4
60-64	3	1	4	2	0
65-69	3	1	0	0	0
70 +	0	2	1	3	0
Missing Data	2	0	0	3	1
Total Drivers	102	91	93	81	70

¹ Values are based upon the year of the arrest.

Table 22: Driver Repeat DWI Arrests by Age Group in Grant County, 2012-2016

Age Groups	Driver Repeat DWI Arrests ¹				
	2012	2013	2014	2015	2016
15-19	1	0	0	0	1
20-24	4	14	8	3	4
25-29	9	18	13	11	7
30-34	12	12	11	10	2
35-39	16	13	7	9	11
40-44	5	9	10	6	10
45-49	9	6	5	7	9
50-54	9	14	10	4	5
55-59	6	8	3	6	3
60-64	4	3	1	3	6
65-69	2	1	2	1	3
70 +	0	0	1	1	0
Missing Data	0	0	0	1	0
Total Drivers	77	98	71	62	61

¹ Values are based upon the year of the arrest.

Table 23: Driver First DWI Convictions by Age Group in Grant County, 2012-2016

Age Groups	Driver First DWI Convictions ¹				
	2012	2013	2014	2015	2016
15-19	9	10	5	4	7
20-24	9	17	23	12	20
25-29	12	20	11	18	7
30-34	9	6	7	7	7
35-39	5	5	6	3	11
40-44	8	10	8	2	6
45-49	7	9	4	2	3
50-54	2	7	4	2	2
55-59	4	3	5	1	5
60-64	3	1	2	1	1
65-69	2	0	1	0	0
70 +	0	0	1	0	0
Missing Data	0	0	0	1	1
Total Drivers	70	88	77	53	70

¹ Values are based upon the year of the conviction.

Table 24: Driver Repeat DWI Convictions by Age Group in Grant County, 2012-2016

Age Groups	Driver Repeat DWI Convictions ¹				
	2012	2013	2014	2015	2016
15-19	1	0	0	0	0
20-24	1	4	4	3	3
25-29	6	9	10	10	3
30-34	11	8	6	11	1
35-39	4	13	5	5	4
40-44	5	5	8	7	3
45-49	6	4	3	4	7
50-54	6	9	8	7	3
55-59	4	6	1	3	3
60-64	1	1	1	1	1
65-69	1	0	3	1	1
70 +	0	0	0	0	1
Missing Data	0	0	0	0	0
Total Drivers	46	59	49	52	30

¹ Values are based upon the year of the conviction.

Table 25: Court Disposition of DWI Arrests for Grant County and the State, 2016

Court Disposition of DWI Arrest ¹	Grant County	Statewide	Percent of Statewide
Total DWI Arrests	131	10,344	1.3%
DWI Arrests Resulting in Convictions	92	5,541	1.7%
DWI Arrests Resulting in Dismissals ²	10	1,512	0.7%
DWI Arrests Awaiting Disposition	29	3,291	0.9%

¹ These are the number of DWI arrests in 2016 and whether the case resulted in a conviction or dismissal, or is still awaiting court disposition, as reported in the NM MVD Citation Tracking System (CTS) as of December 2017.

² For this table, a very small number of "not guilty" rulings may be included in the category Dismissals.

Table 26: Average Number of Days from Date of DWI Arrest to Date of Court Disposition in Grant County and the State, 2016

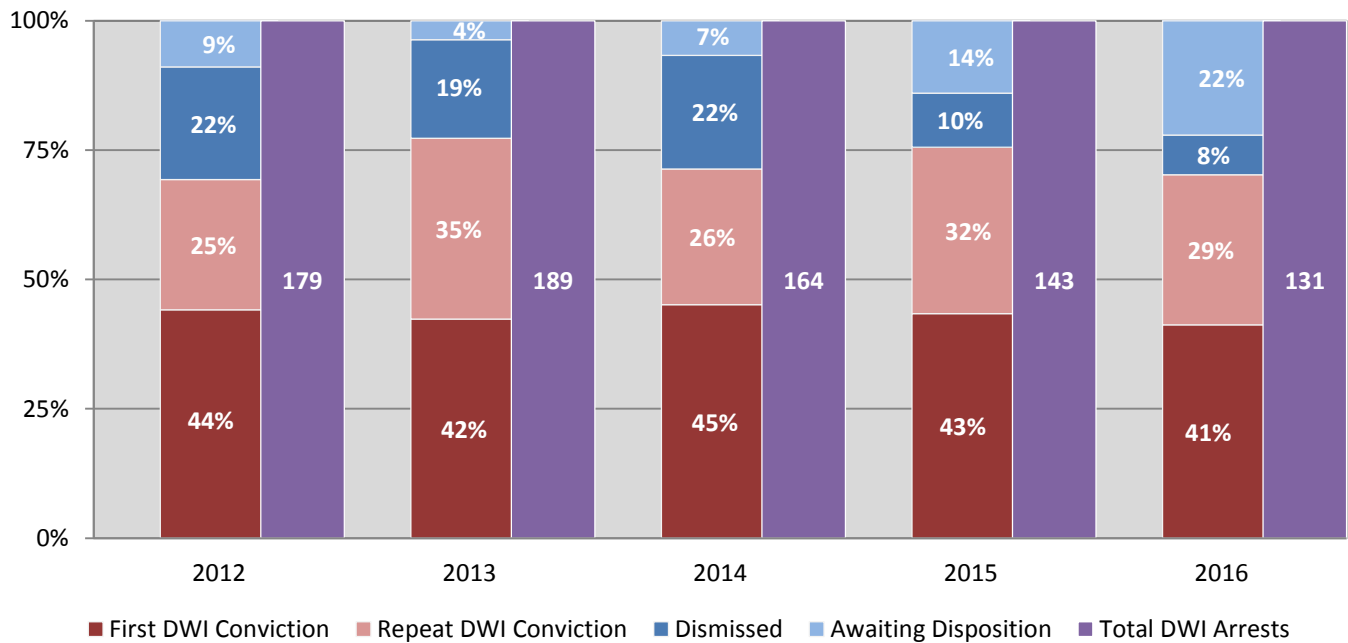
Court Disposition	Average Number of Days		Deviation from Statewide Average
	Grant County	Statewide	
DWI Conviction	145	157	-12
DWI Dismissal	154	179	-25

Table 27 Court Disposition of DWI Arrests in Grant County, 2012-2016

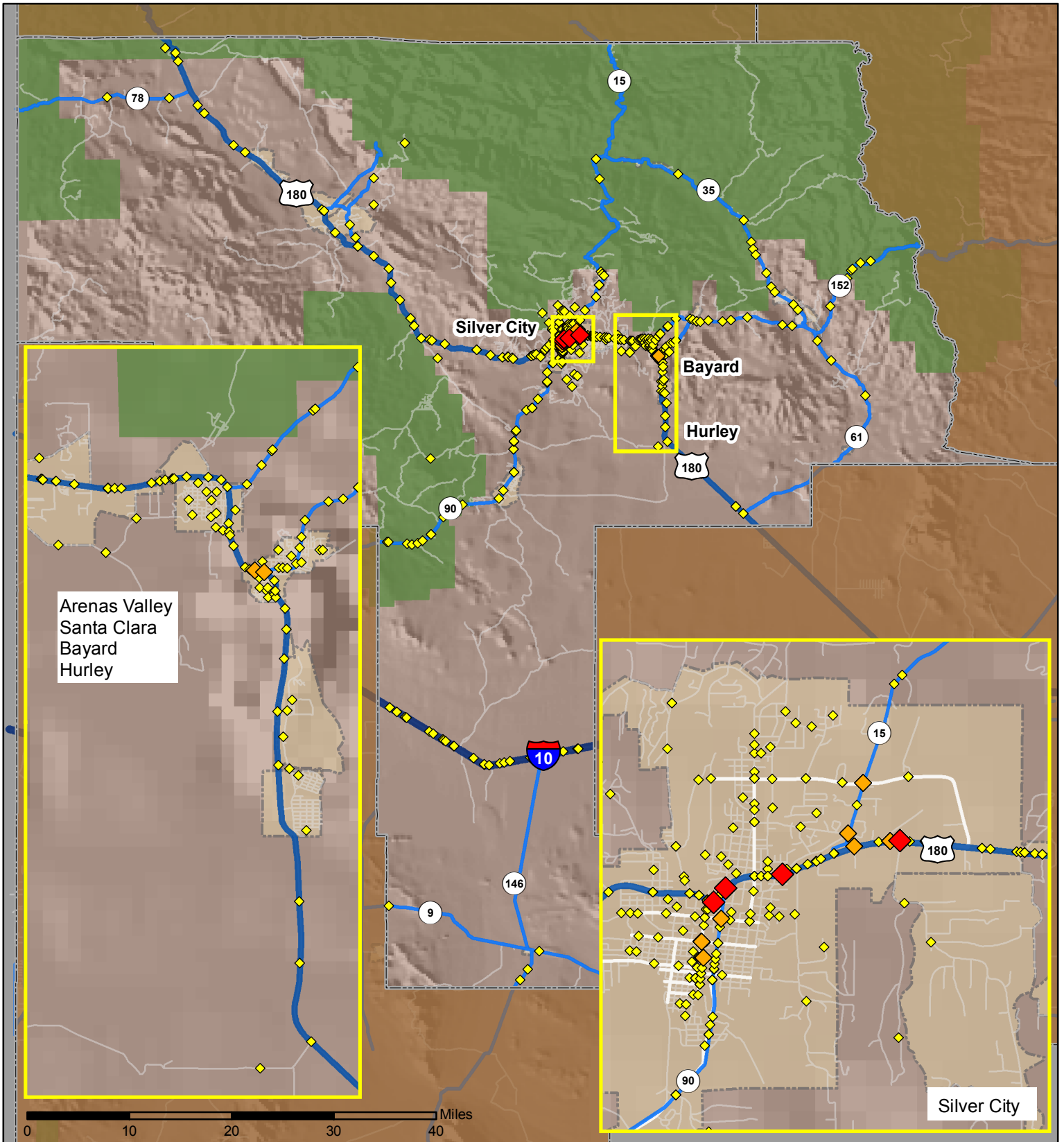
Year of DWI Arrest ¹	Court Disposition				Total DWI Arrests
	First DWI Conviction	Repeat DWI Conviction	Dismissed	Awaiting Disposition	
2012	79	45	39	16	179
2013	80	66	36	7	189
2014	74	43	36	11	164
2015	62	46	15	20	143
2016	54	38	10	29	131

¹ Values are based upon the year of the arrest.

Figure 14: Court Dispositions by Percentage of DWI Arrests in Grant County, 2012-2016



*Table 27 contains the values used to calculate percentages shown in Figure 14.



Legend



- | | |
|-------------------------|---------------------|
| Forest & Wildlife Areas | Interstate Highways |
| Reservations & Pueblos | U.S. Highways |
| County Boundaries | State Highways |
| City Boundaries | Streets & Roadways |

Crashes 2016

- 1 - 3 Crashes
- 4 - 6 Crashes
- 7 - 12 Crashes

Data Source: NMDOT Crash File 2016
<http://tru.unm.edu> CO#5801 tru@unm.edu