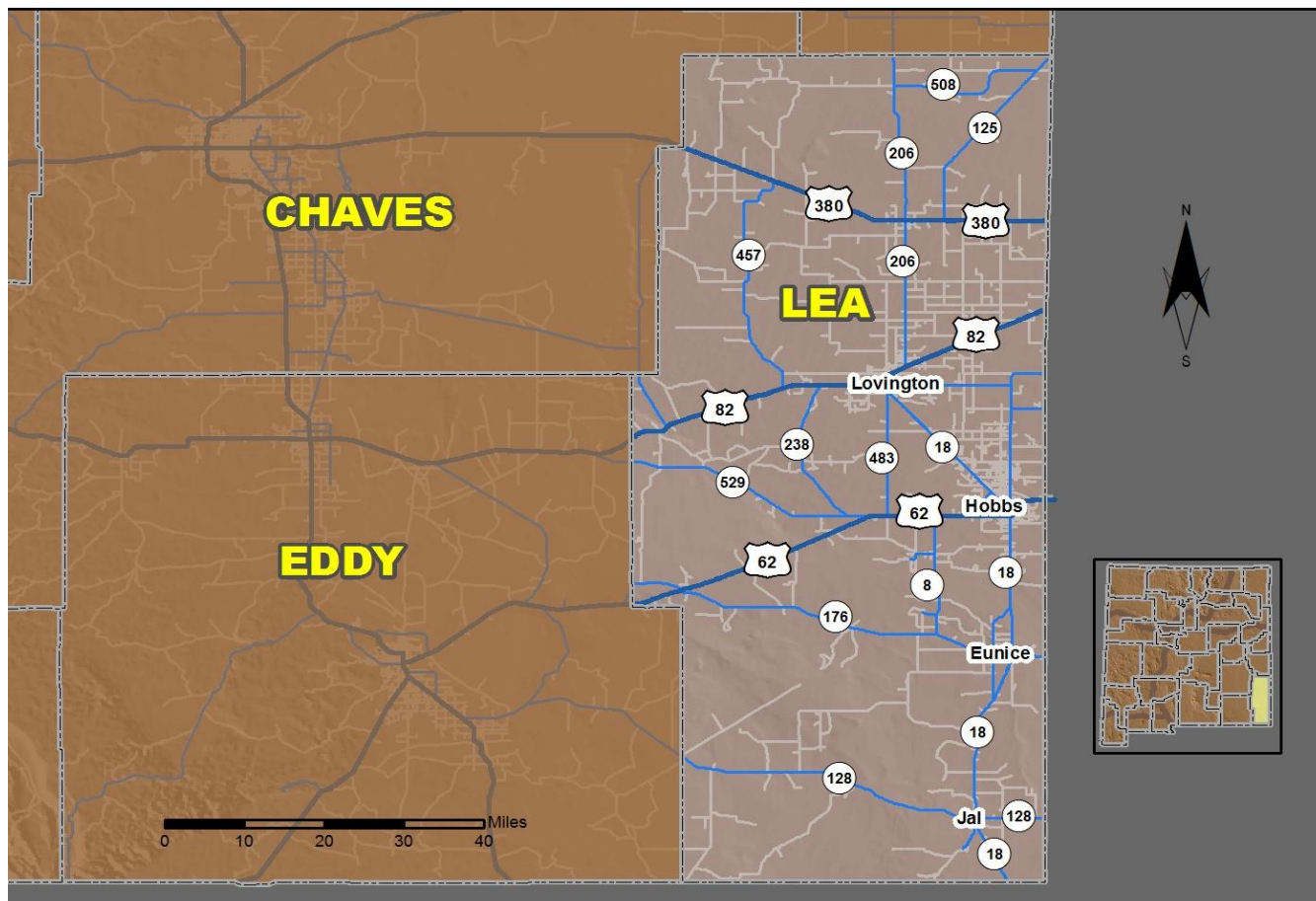


2016 Community Report

Lea County



Produced for the New Mexico Department of Transportation,
Traffic Safety Division, Traffic Records Bureau,
Under Contract 5801 by the University of New Mexico,
Geospatial and Population Studies, Traffic Research Unit

Distributed in compliance with New Mexico Statute 66-7-214
as a reference source regarding New Mexico traffic crashes

For the purposes of this report, data are compiled by the University of New Mexico, Geospatial and Population Studies, Traffic Research Unit (TRU), on behalf of the New Mexico Department of Transportation (NMDOT). Data in this report may differ from that in other data sources, such as the Federal Fatality Analysis Reporting System (FARS), due to the timing of publications and rules for how data are compiled and maintained in Federal vs. State databases. If you have questions regarding this report, please contact the Traffic Safety Division at 505-827-0427.

<http://tru.unm.edu/Crash-Reports/Community-Reports/>

Definitions

Aggravated DWI – A driver arrested for 1) driving with a BAC of 0.16 or higher, 2) driving under the influence of alcohol or drugs and causing bodily injury to a human being as a result, or 3) driving under the influence of alcohol or drugs and refusing to submit to a BAC test at the time of arrest for DWI.

Alcohol-involved Crash – A crash for which the Uniform Crash Report indicated that 1) a DWI citation was issued, 2) alcohol was a contributing factor, or 3) a person in control of a vehicle (including a pedestrian or pedalcyclist) was suspected of being under the influence of alcohol.

Alcohol-involved Driver – A person in control of a vehicle who was cited for DWI or indicated on the Uniform Crash Report as being either suspected or determined by testing to be under the influence of alcohol. There can be multiple alcohol-involved drivers in a single alcohol-involved crash.

Crash – A reported incident on a public roadway involving one or more motor vehicles that resulted in death, personal injury, or at least \$500 in property damage. Crashes on private property (such as a parking lot) are not included.

DWI Arrest (Citation) – In this report, a DWI arrest (a.k.a. a DWI citation) is a driver arrested for either DWI or aggravated DWI. New Mexico's legal limit for presumption of driving while intoxicated (DWI) is 0.08 for non-commercial drivers older than 21 years of age, 0.04 for commercial vehicle drivers, and 0.02 for drivers younger than 21 years of age.

DWI Conviction – A driver convicted of driving under the intoxicating influence of alcohol, narcotics, or pathogenic drugs, including aggravated DWI.

Fatal Crash – A crash in which at least one person was killed. More than one person can be killed in a single fatal crash.

Fatalities – The number of people killed in a crash. The terms "killed" and "deaths" are synonymous with "fatalities." A fatality is crash-related if it occurs at the time of the crash or if the person(s) involved in the crash dies within 30 days.

Injury Crash – A reported crash in which at least one person was injured. Injury crashes involve at least one suspected serious injury (Class A), suspected minor injury (Class B), or possible injury (Class C). Fatal crashes are not included.

Missing Data – An indication that the applicable field on the UCR form was left blank or contained an invalid code. Starting with crashes that occurred in 2012, improvements in the identification of missing data in the NMDOT crash database led to an increase in the reported amount of missing data.

Pedalcyclist – A person riding a mechanism of transport that is powered solely by pedals (a.k.a. bicyclist).

Pedestrian – A person on foot, walking, running, jogging, hiking, sitting or lying down who is involved in a motor vehicle traffic crash.

Sources

Crash Data – New Mexico Department of Transportation, Traffic Safety Division, Traffic Records Bureau, Traffic Crash Database, as of the report date below. Crash data are compiled using NMDOT Uniform Crash Reports (UCR), submitted by law enforcement agencies in the state, for any incident on a public roadway involving one or more motor vehicles that resulted in death, injury, or at least \$500 in property damage. These reports are processed by the NMDOT Traffic Records Bureau and analyzed by the University of New Mexico, Geospatial and Population Studies, Traffic Research Unit (TRU).

DWI Citation Tracking System (CTS) – New Mexico Taxation and Revenue Department (NM TRD), Motor Vehicle Division (MVD), DWI Citation Tracking System (CTS), as of December 2017. Repeat offenders are identified by the combination of account key, arrest date, and citation number. County data are based upon the county where the arrest took place. City data are based upon the city where the offender resides.

Urban Areas – New Mexico Department of Transportation, Asset Management and Planning, 2010 U.S. Census Urbanized Area Boundaries, NMDOT-Adjusted, and U.S. Census Urban Clusters, August 21, 2013. In crashes before 2013, "urban" was defined as a town or city with a population of at least 2,500 people.

Table 1: Total Crashes and Alcohol-involved Crashes by Crash Severity in Lea County, 2007-2016

Year	Total Crashes				Alcohol-involved Crashes			
	Fatal	Injury	Property Damage Only	Total	Fatal	Injury	Property Damage Only	Total
2007	13	375	1,115	1,503	5	32	34	71
2008	14	407	1,050	1,471	3	46	69	118
2009	12	359	888	1,259	3	35	45	83
2010	18	366	916	1,300	7	38	53	98
2011	11	400	1,036	1,447	6	32	45	83
2012	17	380	986	1,383	6	29	37	72
2013	11	421	851	1,283	4	20	32	56
2014	28	488	875	1,391	7	29	33	69
2015	12	316	692	1,020	4	28	18	50
2016	11	307	689	1,007	5	13	21	39

Figure 1: Alcohol-involved Fatal and Injury Crashes Compared with Non-alcohol-involved Fatal and Injury Crashes in Lea County, 2007-2016

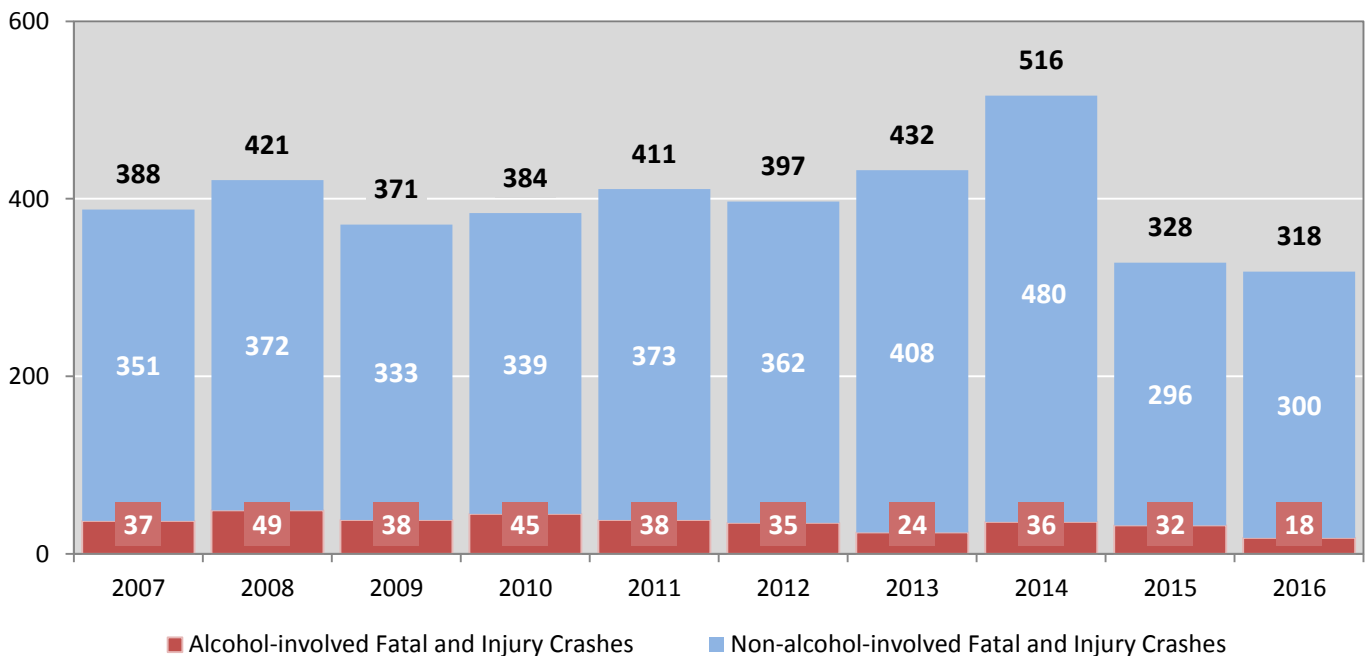


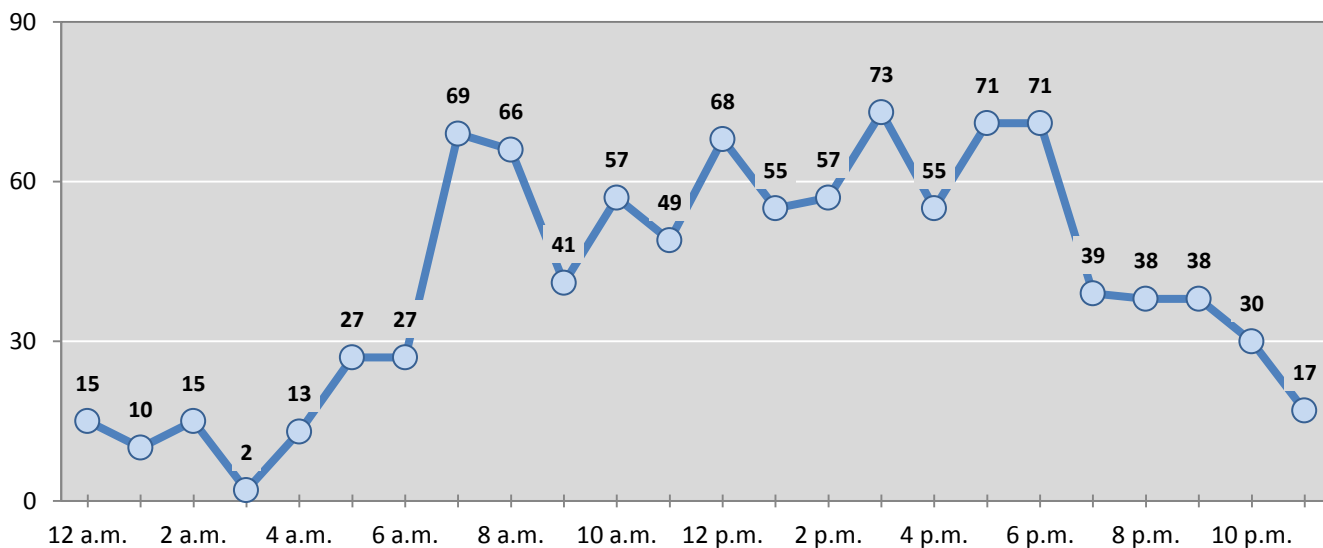
Table 2: Crashes by Month in Lea County, 2012-2016

Month	Crashes					5-Year Average
	2012	2013	2014	2015	2016	
January	125	99	95	132	88	108
February	109	87	123	86	85	98
March	81	84	114	93	91	93
April	103	79	107	102	77	94
May	121	93	108	46	82	90
June	113	100	122	96	73	101
July	122	105	91	97	64	96
August	136	131	101	62	83	103
September	111	112	116	44	88	94
October	127	118	136	88	91	112
November	106	150	123	92	97	114
December	129	125	155	82	88	116
Total Crashes	1,383	1,283	1,391	1,020	1,007	1,217

Table 3: Alcohol-involved Crashes by Month in Lea County, 2012-2016

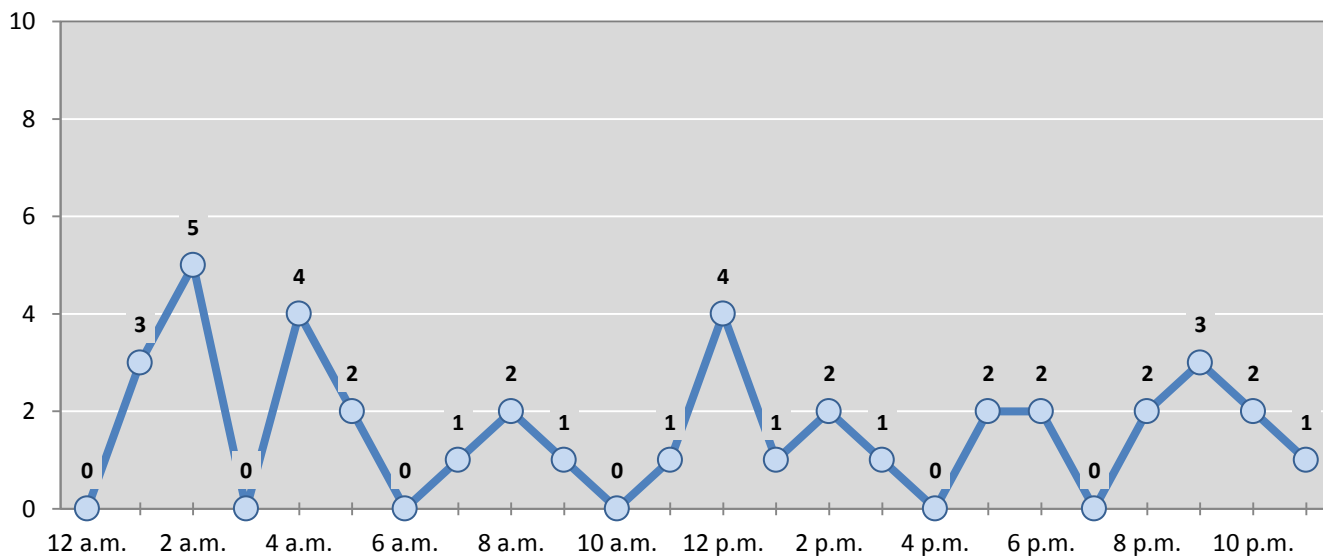
Month	Alcohol-involved Crashes					5-Year Average
	2012	2013	2014	2015	2016	
January	6	4	4	6	2	4
February	9	7	5	2	3	5
March	5	3	6	3	2	4
April	3	7	8	4	4	5
May	5	1	6	4	5	4
June	12	6	3	6	5	6
July	8	3	8	6	2	5
August	7	5	4	3	1	4
September	5	6	5	3	4	5
October	1	4	6	2	4	3
November	6	3	9	8	3	6
December	5	7	5	3	4	5
Total Crashes	72	56	69	50	39	57

Figure 2: Crashes by Hour in Lea County, 2016



* In 2016, Lea County had 4 crashes for which hour data were missing.

Figure 3: Alcohol-involved Crashes by Hour in Lea County, 2016



* In 2016, Lea County had 0 alcohol-involved crashes for which hour data were missing.

Table 4: Alcohol-involved Crashes by Day of Week in Lea County, 2012-2016

Day of Week	Alcohol-involved Crashes					5-Year Average
	2012	2013	2014	2015	2016	
Sunday	14	11	16	10	12	13
Monday	4	5	5	4	6	5
Tuesday	5	3	5	5	2	4
Wednesday	8	7	5	6	5	6
Thursday	8	3	11	11	4	7
Friday	14	8	11	5	0	8
Saturday	19	19	16	9	10	15
Total Crashes	72	56	69	50	39	57

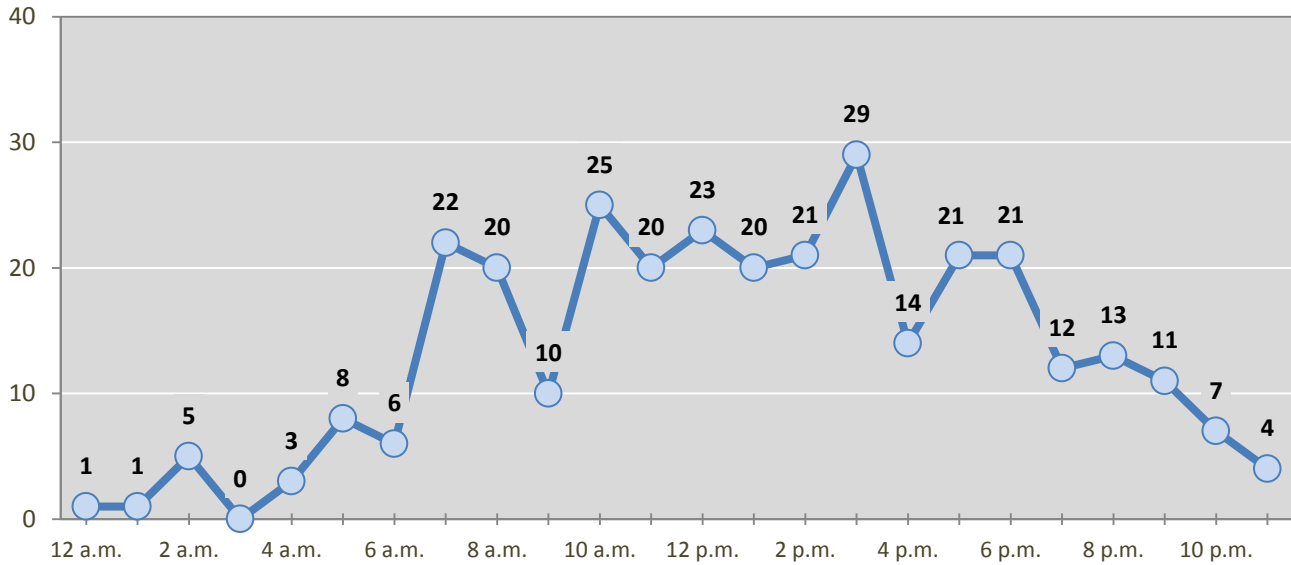
Table 5: Fatal and Injury Crashes by Day of Week in Lea County, 2012-2016

Day of Week	Fatal and Injury Crashes					5-Year Average
	2012	2013	2014	2015	2016	
Sunday	45	50	51	37	36	44
Monday	61	73	83	38	48	61
Tuesday	51	62	93	47	63	63
Wednesday	53	51	86	54	45	58
Thursday	63	64	67	58	36	58
Friday	71	78	71	54	52	65
Saturday	53	54	65	40	38	50
Total Crashes	397	432	516	328	318	398

Table 6: Pedestrian and Pedalcyclist Crashes by Day of Week in Lea County, 2012-2016

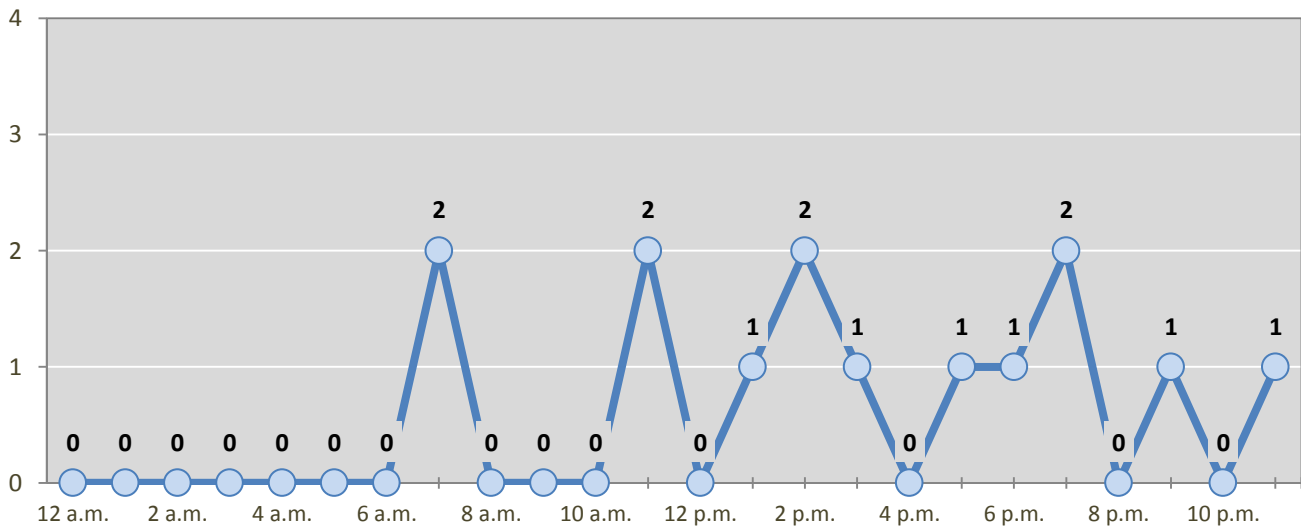
Day of Week	Pedestrian and Pedalcyclist Crashes					5-Year Average
	2012	2013	2014	2015	2016	
Sunday	1	3	2	1	2	2
Monday	2	1	4	0	3	2
Tuesday	4	5	1	1	5	3
Wednesday	3	3	5	1	1	3
Thursday	3	2	3	1	0	2
Friday	5	5	1	0	1	2
Saturday	2	3	5	3	2	3
Total Crashes	20	22	21	7	14	17

Figure 4: Fatal and Injury Crashes by Hour in Lea County, 2016



* In 2016, Lea County had 1 crashes for which hour data were missing.

Figure 5: Pedestrian and Pedalcyclist Crashes by Hour in Lea County, 2016



* In 2016, Lea County had 0 crashes for which hour data were missing.

Table 7: Severity of Injuries to People in Crashes by Rural and Urban Location in Lea County, 2016

Urban and Rural Locations by Alcohol-involvement	People in Crashes by Severity of Injuries					Total People
	Fatalities (Class K)	Suspected Serious Injuries (Class A)	Suspected Minor Injuries (Class B)	Possible Injuries (Class C)	No Apparent Injuries (Class O)	
People in Alcohol-involved Crashes	5	2	13	12	61	93
Urban	0	0	5	11	45	61
Rural Non-Interstate	5	2	8	1	16	32
Rural Interstate	0	0	0	0	0	0
People in Crashes	13	18	151	289	1,964	2,435
Urban	3	6	90	227	1,483	1,809
Rural Non-Interstate	10	12	61	62	481	626
Rural Interstate	0	0	0	0	0	0
Percent in Alcohol-involved Crashes	38%	11%	9%	4%	3%	4%

Table 8: Total Crashes by Roadway System and Crash Severity in Lea County, 2012-2016

Crash Severity by System	Crashes by Year					5-Year Average
	2012	2013	2014	2015	2016	
Total Rural Interstate	0	0	0	0	0	0
Fatal Crash	0	0	0	0	0	0
Injury Crash	0	0	0	0	0	0
Property Damage Only Crash	0	0	0	0	0	0
Total Rural Non-Interstate	255	301	469	468	340	367
Fatal Crash	12	7	24	9	9	12
Injury Crash	113	112	165	142	86	124
Property Damage Only Crash	130	182	280	317	245	231
Total Urban	1,128	982	922	552	667	851
Fatal Crash	5	4	4	3	2	4
Injury Crash	267	309	323	174	221	259
Property Damage Only Crash	856	669	595	375	444	588

Table 9: Total Crashes by Crash Classification in Lea County, 2012-2016

Crash Classification	Total Crashes by Year					5-Year Average
	2012	2013	2014	2015	2016	
Animal	49	43	57	63	72	57
Fixed Object	168	138	121	113	88	126
Other (Non-Collision)	21	20	25	13	32	22
Other (Object)	31	25	32	27	10	25
Other Vehicle	843	800	797	567	630	727
Overturn/Rollover	117	116	148	48	51	96
Parked Vehicle	89	74	84	51	70	74
Pedalcyclist	9	8	5	2	6	6
Pedestrian	12	14	16	5	8	11
Railroad Train	1	0	3	1	0	1
Rollover	0	0	1	101	24	25
Vehicle on Other Road	34	21	71	8	15	30
Missing Data	9	24	31	21	1	17
Total Crashes	1,383	1,283	1,391	1,020	1,007	1,217

Table 10: Vehicles in Crashes by Vehicle Type in Lea County, 2012-2016

Vehicle Type ¹	Vehicles in Crashes by Vehicle Type					5-Year Average
	2012	2013	2014	2015	2016	
Bus	7	4	3	1	4	4
Motorcycle	35	30	33	24	28	30
Passenger	924	760	584	429	642	668
Pedalcyclist	9	9	5	2	6	6
Pedestrian	11	15	17	5	8	11
Pickup	754	769	842	580	540	697
Semi	130	129	210	183	142	159
Van/SUV/4WD	420	415	369	267	311	356
Other Vehicle	15	25	4	13	4	12
Missing Data	157	171	446	245	89	222
Total Vehicles	2,462	2,327	2,513	1,749	1,774	2,165

¹ Pedestrians and pedalcyclists are counted as non-motorized vehicles, when involved in a crash with a motor vehicle. See Page 17 for data on drivers of non-motorized vehicles in crashes (i.e. pedestrians and pedalcyclists).

Table 11: Motor Vehicle Drivers in Crashes by Vehicle Type and Age Group in Lea County, 2016

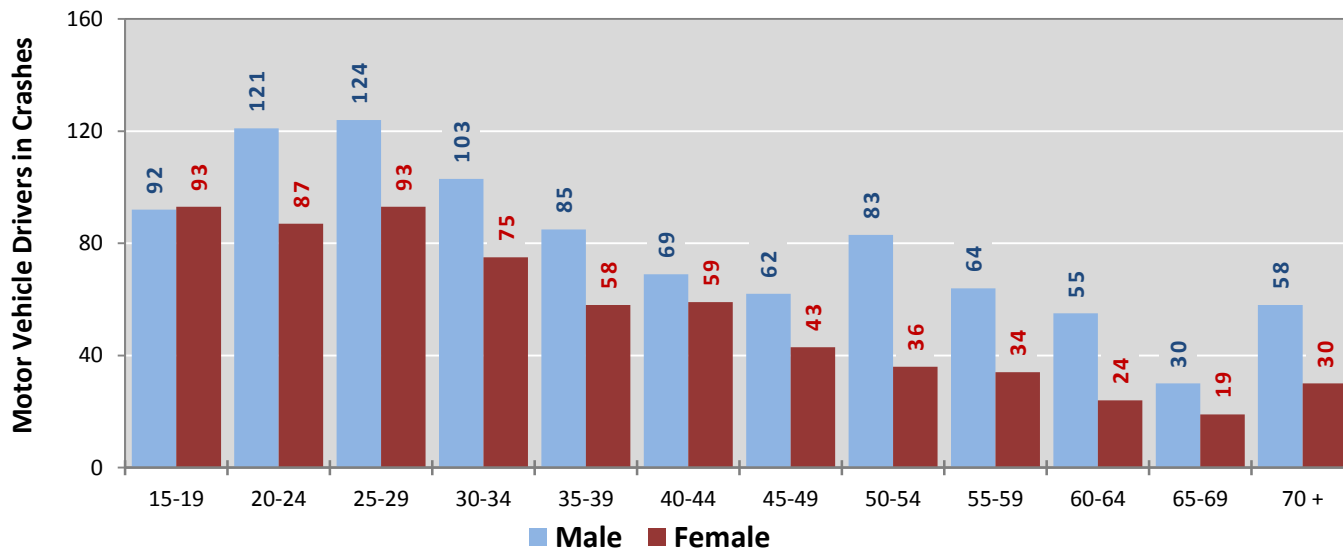
Age Groups	Motor Vehicle ¹ Drivers by Vehicle Type and Age Group								Total Drivers
	Bus	Motor-cycle	Passenger	Pickup	Semi	Van 4WD SUV	Other Vehicle	Missing Data	
15-19	0	4	97	46	0	30	0	8	185
20-24	0	6	97	62	9	26	1	7	208
25-29	0	3	89	65	17	39	0	4	217
30-34	0	1	56	62	12	43	1	3	178
35-39	0	3	44	42	19	30	0	5	143
40-44	2	3	42	38	18	25	0	0	128
45-49	0	1	27	36	21	18	0	2	105
50-54	1	1	32	39	20	22	1	3	119
55-59	1	2	26	36	14	17	1	1	98
60-64	0	2	24	31	7	13	0	2	79
65-69	0	0	13	20	0	14	0	2	49
70 +	0	0	36	31	0	18	0	3	88
Missing Data	0	2	59	32	5	16	0	49	163
Total Drivers	4	28	642	540	142	311	4	89	1,760

Table 12: Alcohol-involved Motor Vehicle Drivers in Crashes by Vehicle Type and Age Group in Lea County, 2016

Age Groups	Alcohol-involved Motor Vehicle ¹ Drivers by Vehicle Type and Age Group								Total Drivers
	Bus	Motor-cycle	Passenger	Pickup	Semi	Van 4WD SUV	Other Vehicle	Missing Data	
15-19	0	0	1	2	0	0	0	0	3
20-24	0	0	2	1	0	1	0	0	4
25-29	0	1	5	4	0	0	0	0	10
30-34	0	0	0	1	0	0	0	0	1
35-39	0	0	1	0	0	1	0	0	2
40-44	0	1	2	1	2	0	0	0	6
45-49	0	0	1	2	0	1	0	0	4
50-54	0	0	1	1	0	0	0	0	2
55-59	0	1	1	0	0	1	0	0	3
60-64	0	0	0	2	0	0	0	0	2
65-69	0	0	0	0	0	0	0	0	0
70 +	0	0	0	0	0	1	0	0	1
Missing Data	0	0	0	0	1	0	0	0	1
Total Drivers	0	3	14	14	3	5	0	0	39

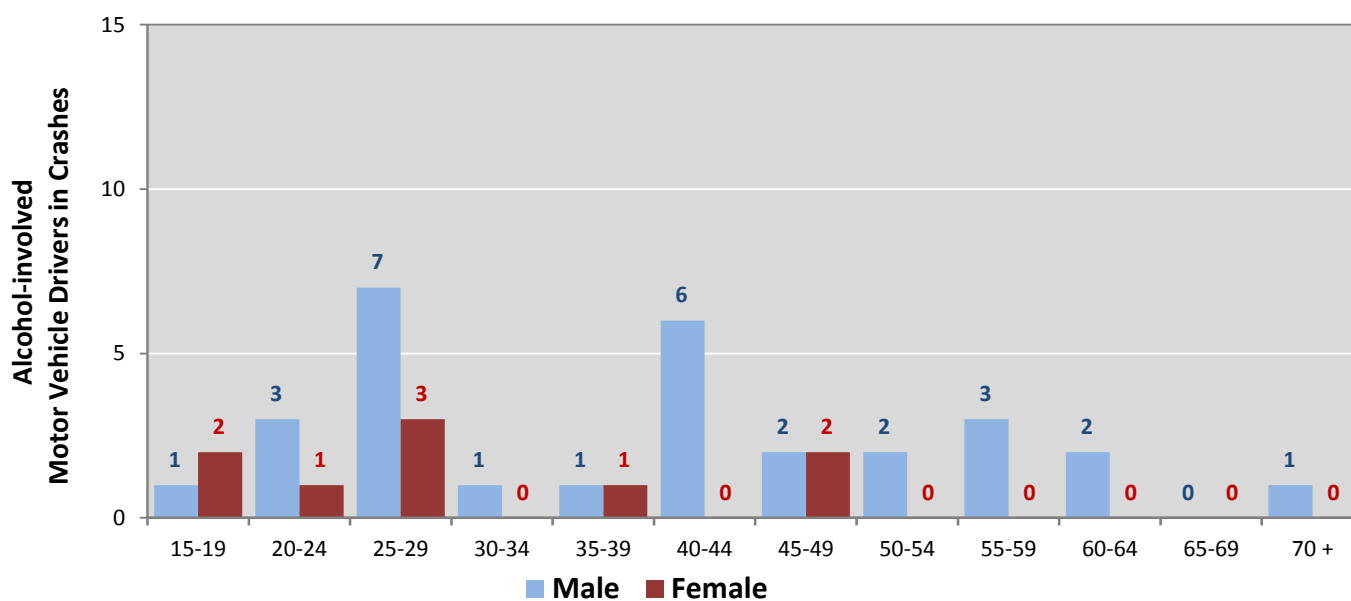
¹ See Page 17 for data on drivers of non-motorized vehicles in crashes (i.e. pedestrians and pedalcyclists).

Figure 6: Motor Vehicle Drivers in Crashes by Age Group and Sex in Lea County, 2016



* In 2016, Lea County had 163 drivers in crashes for which age or sex data were missing.

Figure 7: Alcohol-involved Motor Vehicle Drivers in Crashes by Age Group and Sex in Lea County, 2016



* In 2016, Lea County had 1 drivers in crashes for which age or sex data were missing.

Table 13: Alcohol-involved Motor Vehicle Drivers Under 21 (Ages 15-20) in Crashes in Lea County, 2012-2016

Age ¹	Year					5-Year Total
	2012	2013	2014	2015	2016	
15	1	0	0	0	0	1
16	1	1	0	0	0	2
17	3	0	0	0	2	5
18	0	1	1	1	0	3
19	4	3	1	0	1	9
20	5	5	4	1	1	16
Total Drivers	14	10	6	2	4	36

Table 14: Motor Vehicle Drivers Under 21 (Ages 15-20) in Crashes by Age, Sex and Alcohol-involvement in Lea County, 2016

Age ¹	Total Drivers				Alcohol-involved Drivers			
	Sex		Total Drivers	Percent of Total	Sex		Total Drivers	Percent of Total
	Male	Female			Male	Female		
15	9	6	15	7%	0	0	0	0%
16	16	14	30	14%	0	0	0	0%
17	23	23	46	21%	1	1	2	50%
18	29	22	51	23%	0	0	0	0%
19	15	28	43	19%	0	1	1	25%
20	23	14	37	17%	0	1	1	25%
Total Drivers	115	107	222	100%	1	3	4	100%

¹ For analysis of drivers under age 21, when the driver age or sex are not identified on the crash report (typically hit-and-run drivers), the driver data are considered unreliable and are excluded from the analysis.

**Table 15: Frequency of Contributing Factors in Crashes
by Crash Severity in Lea County, 2016**

Contributing Factors	Frequency of Contributing Factor ¹ by Crash Severity			
	Frequency in Fatal Crashes	Frequency in Injury Crashes	Frequency in Property Damage Only Crashes	Frequency in All Crashes
Human	25	424	800	1,249
Driver Inattention	3	133	243	379
Failed to Yield Right of Way	1	76	105	182
Following Too Closely	1	42	91	134
Other Improper Driving	3	37	68	108
Made Improper Turn	1	21	67	89
Improper Backing	0	4	44	48
Excessive Speed	5	23	18	46
Passed Stop Sign	1	19	25	45
Alcohol Involved	5	13	21	39
Disregarded Traffic Signal	0	13	19	32
Drove Left Of Center	2	9	16	27
Avoid No Contact - Vehicle	0	7	19	26
Speed Too Fast for Conditions	1	8	14	23
Improper Lane Change	0	2	15	17
Drug Involved	2	4	6	12
Improper Overtaking	0	2	9	11
Cell Phone	0	1	8	9
Avoid No Contact - Other	0	2	6	8
Pedestrian Error	0	5	0	5
Vehicle Skidded Before Brake	0	2	3	5
Texting	0	1	3	4
Driverless Moving Vehicle	0	0	0	0
Failed to Yield to Emergency Vehicle	0	0	0	0
Failed to Yield to Police Vehicle	0	0	0	0
High Speed Pursuit	0	0	0	0
Vehicle	0	6	31	37
Other Mechanical Defect	0	3	17	20
Defective Tires	0	2	9	11
Defective Steering	0	0	3	3
Inadequate Brakes	0	1	2	3
Environment	0	2	5	7
Road Defect	0	2	5	7
Low Visibility Due to Smoke	0	0	0	0
Traffic Control Not Functioning	0	0	0	0
Other	10	248	564	822
None	9	220	465	694
Other - No Driver Error	1	28	99	128

¹ Multiple contributing factors may be reported for any vehicle in a crash.

Table 16: People in Crashes by Crash Classification and Severity of Injuries in Lea County, 2016

Crash Classification	People in Crashes by Severity of Injuries					Total People
	Fatalities (Class K)	Suspected Serious Injuries (Class A)	Suspected Minor Injuries (Class B)	Possible Injuries (Class C)	No Apparent Injuries (Class O)	
Animal	0	0	6	7	94	107
Fixed Object	0	0	10	9	85	104
Other (Non-Collision)	0	0	1	2	36	39
Other (Object)	0	0	1	1	18	20
Other Vehicle	7	7	77	248	1,482	1,821
Overturn/Rollover	1	4	29	10	26	70
Parked Vehicle	0	0	3	1	144	148
Pedalcyclist	0	1	3	1	8	13
Pedestrian	0	1	3	4	12	20
Railroad Train	0	0	0	0	0	0
Rollover	5	5	17	4	20	51
Vehicle on Other Road	0	0	1	2	35	38
Missing Data	0	0	0	0	4	4
Total People	13	18	151	289	1,964	2,435

**Table 17: Killed or Injured Unbelted People in Crashes
by Sex and Age Group in Lea County, 2016**

Age Groups	Unbelted People Killed or Injured ^{1,2}				Total People
	Male	Percent of Male	Female	Percent of Female	
0-4	6	43%	0	0%	6
5-9	0	0%	2	20%	2
10-14	0	0%	0	0%	0
15-19	4	29%	0	0%	4
20-24	0	0%	2	20%	2
25-29	1	7%	0	0%	1
30-34	0	0%	2	20%	2
35-39	0	0%	2	20%	2
40-44	1	7%	1	10%	2
45-49	1	7%	0	0%	1
50-54	0	0%	0	0%	0
55-59	0	0%	1	10%	1
60-64	0	0%	0	0%	0
65-69	0	0%	0	0%	0
70 +	1	7%	0	0%	1
Missing Data	0	0%	0	0%	0
Total People	14	100%	10	100%	24

¹ People injured are in one of three categories: suspected serious injury, suspected minor injury, or possible injury.

² Excludes people in or on buses, heavy trucks, motorcycles, or ATVs.

**Figure 8: Seatbelt Use by People in Crashes with Fatal or
Suspected Serious Injuries in Lea County, 2012-2016**

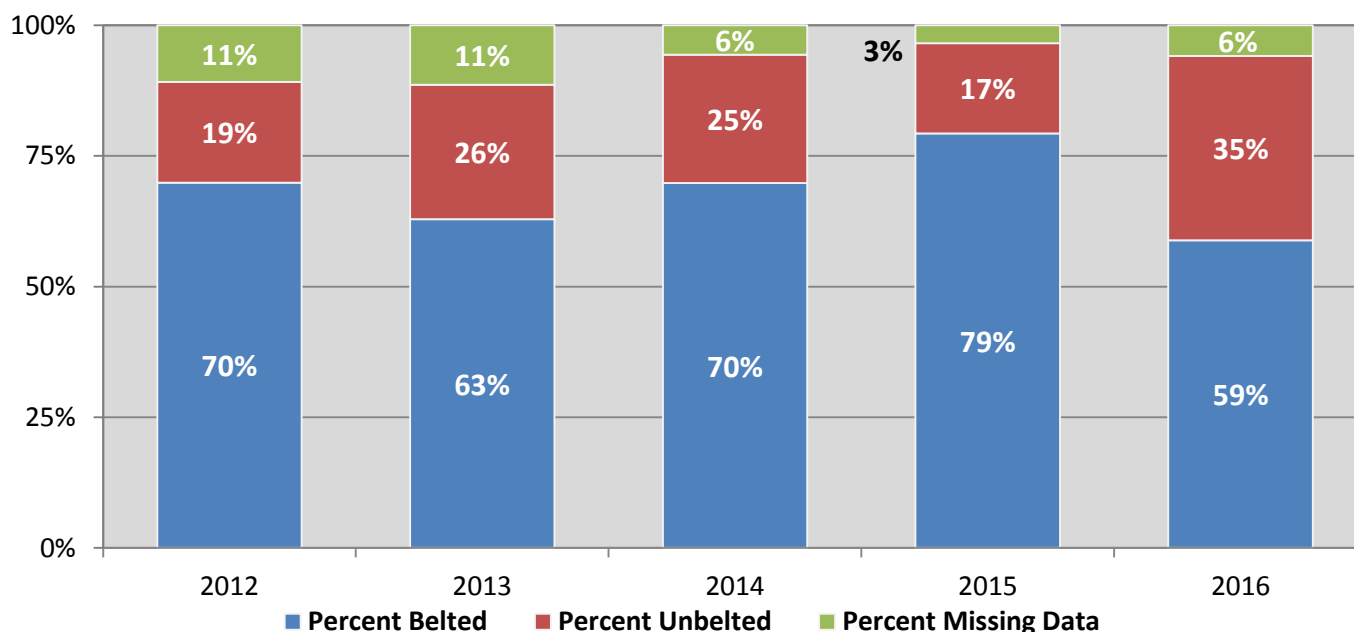
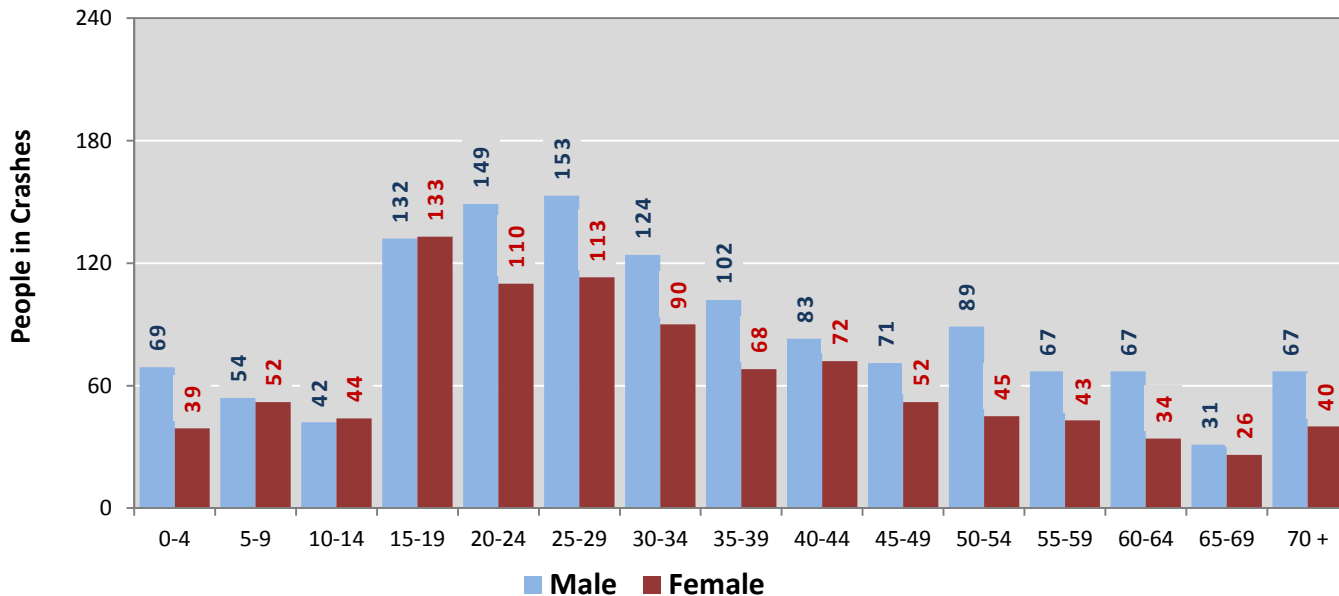
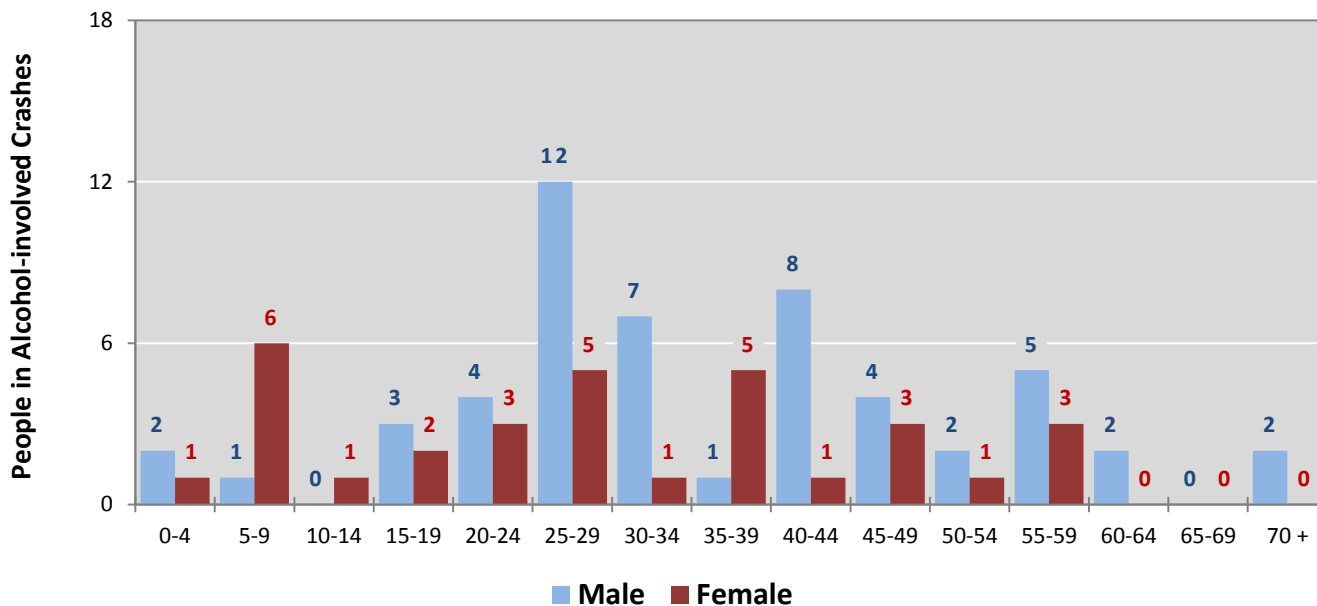


Figure 9: People in Crashes by Age Group and Sex in Lea County, 2016



* In 2016, Lea County had 174 people in crashes for which age or sex data were missing.

Figure 10: People in Alcohol-involved Crashes by Age Group and Sex in Lea County, 2016



* In 2016, Lea County had 8 people in alcohol-involved crashes for which age or sex data were missing.

Table 18: Pedestrians and Pedalcyclists in Crashes by Age Group in Lea County, 2012-2016

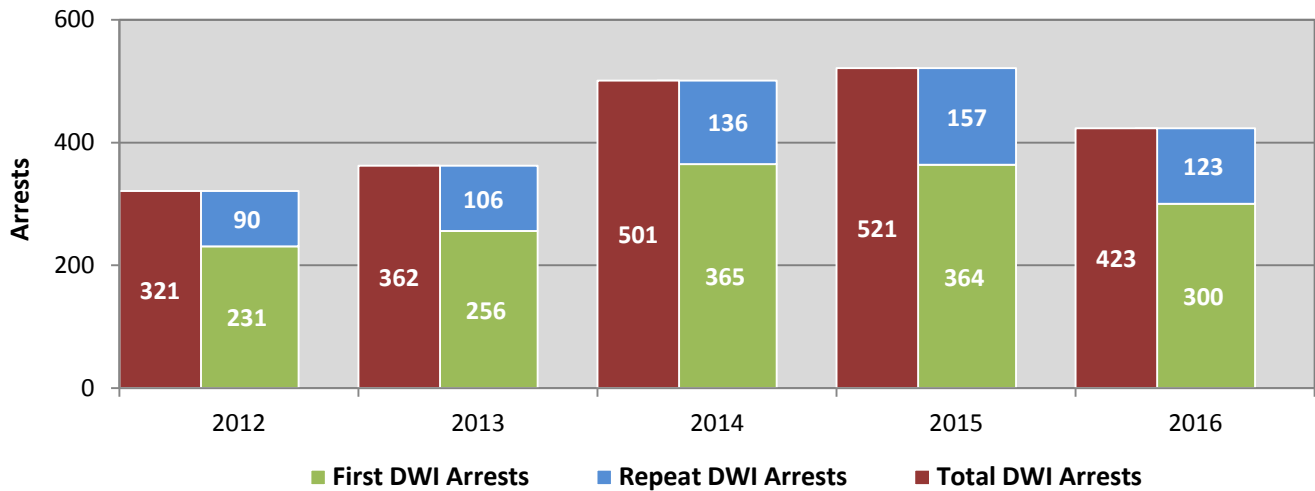
Age Groups	Pedestrians and Pedalcyclists ¹ in Crashes					5-Year Total People
	2012	2013	2014	2015	2016	
0-4	0	3	0	0	1	4
5-9	3	3	1	1	1	9
10-14	2	2	1	0	0	5
15-19	2	2	1	0	3	8
20-24	1	1	2	1	3	8
25-29	4	5	1	0	1	11
30-34	1	0	1	0	0	2
35-39	1	1	1	0	0	3
40-44	2	0	0	0	1	3
45-49	1	0	4	1	1	7
50-54	1	1	1	1	0	4
55-59	0	0	2	1	1	4
60-64	0	0	4	0	0	4
65-69	1	2	1	0	0	4
70 +	0	0	0	1	1	2
Missing Data	1	4	2	1	1	9
Total People	20	24	22	7	14	87

Table 19: Pedestrians and Pedalcyclists in Crashes by Alcohol Involvement and Severity of Injuries in Lea County, 2016

Alcohol Involvement	Pedestrians and Pedalcyclists ¹ in Crashes					Total People
	Fatalities (Class K)	Suspected Serious Injuries (Class A)	Suspected Minor Injuries (Class B)	Possible Injuries (Class C)	No Apparent Injury (Class O)	
Total Pedalcyclists	0	1	3	1	1	6
Involved	0	0	0	0	0	0
Not Involved	0	1	3	1	1	6
Total Pedestrians	0	1	2	4	1	8
Involved	0	0	0	0	0	0
Not Involved	0	1	2	4	1	8
Total People	0	2	5	5	2	14

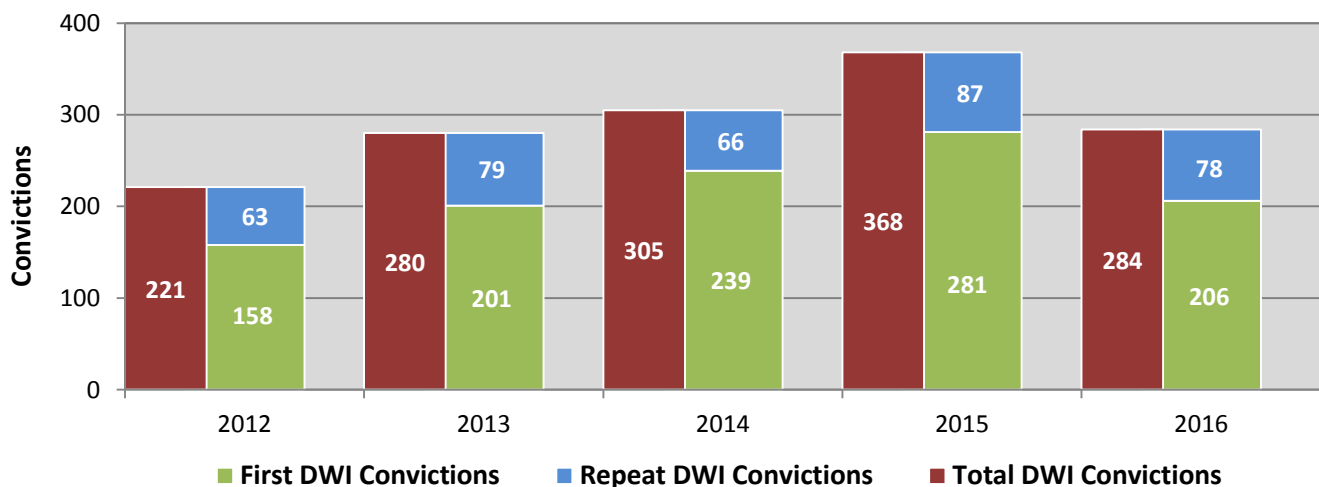
¹ Pedestrians and pedalcyclists are counted as non-motorized vehicles, when involved in a crash with a motor vehicle.

**Figure 11: DWI Arrests in Lea County,
Showing First and Repeat DWI Arrests, 2012-2016**



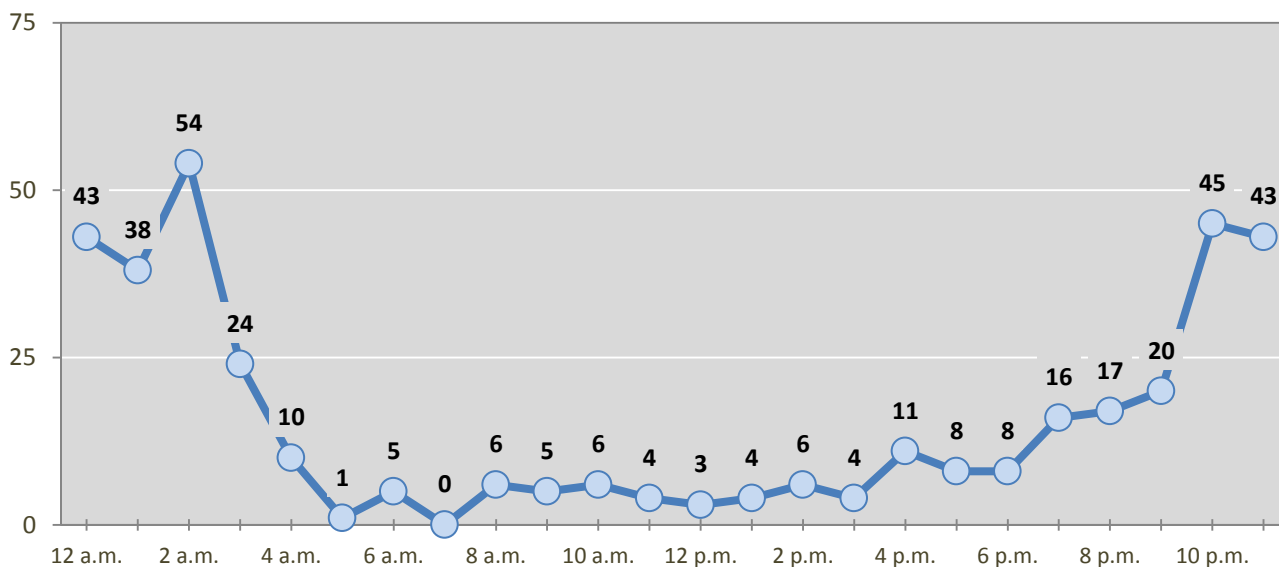
*Values are based upon the year of the arrest.

**Figure 12: DWI Convictions in Lea County,
Showing First and Repeat DWI Convictions, 2012-2016**



*Values are based upon the year of the conviction.

Figure 13: DWI Arrests by Hour in Lea County, 2016



* In 2016, Lea County had 42 arrests for which hour data were missing.

Table 20: DWI Arrests by Day of Week in Lea County, 2012-2016

Day of Week	Year					5-Year Average
	2012	2013	2014	2015	2016	
Sunday	85	101	128	139	98	110
Monday	20	34	36	52	36	36
Tuesday	14	20	38	38	34	29
Wednesday	17	30	36	47	43	35
Thursday	54	36	51	67	45	51
Friday	51	50	84	60	67	62
Saturday	80	91	128	118	100	103
Total Arrests	321	362	501	521	423	426

Table 21: Driver First DWI Arrests by Age Group in Lea County, 2012-2016

Age Groups	Driver First DWI Arrests ¹				
	2012	2013	2014	2015	2016
15-19	22	24	19	27	22
20-24	58	55	88	100	62
25-29	37	51	79	56	58
30-34	34	32	54	53	48
35-39	24	31	38	37	33
40-44	15	22	19	19	26
45-49	11	17	28	20	16
50-54	19	10	19	23	13
55-59	4	8	13	12	5
60-64	5	1	2	5	3
65-69	2	2	2	1	2
70 +	0	0	0	2	4
Missing Data	0	3	4	9	8
Total Drivers	231	256	365	364	300

¹ Values are based upon the year of the arrest.

Table 22: Driver Repeat DWI Arrests by Age Group in Lea County, 2012-2016

Age Groups	Driver Repeat DWI Arrests ¹				
	2012	2013	2014	2015	2016
15-19	0	0	1	2	1
20-24	6	12	14	21	12
25-29	9	23	25	27	16
30-34	17	17	25	24	19
35-39	13	14	23	18	15
40-44	12	6	14	12	18
45-49	11	14	14	18	10
50-54	13	10	11	8	14
55-59	8	6	5	15	11
60-64	0	2	4	9	6
65-69	0	1	0	2	1
70 +	0	0	0	1	0
Missing Data	1	1	0	0	0
Total Drivers	90	106	136	157	123

¹ Values are based upon the year of the arrest.

Table 23: Driver First DWI Convictions by Age Group in Lea County, 2012-2016

Age Groups	Driver First DWI Convictions ¹				
	2012	2013	2014	2015	2016
15-19	12	16	12	24	12
20-24	50	44	70	77	48
25-29	24	38	60	44	38
30-34	18	29	25	38	30
35-39	16	22	21	26	23
40-44	11	18	14	16	15
45-49	7	15	13	17	10
50-54	10	11	13	15	12
55-59	4	5	6	12	6
60-64	4	1	1	5	2
65-69	1	2	2	1	1
70 +	0	0	0	1	2
Missing Data	1	0	2	5	7
Total Drivers	158	201	239	281	206

¹ Values are based upon the year of the conviction.

Table 24: Driver Repeat DWI Convictions by Age Group in Lea County, 2012-2016

Age Groups	Driver Repeat DWI Convictions ¹				
	2012	2013	2014	2015	2016
15-19	0	0	0	1	0
20-24	9	3	10	12	8
25-29	4	11	6	11	11
30-34	11	14	12	18	12
35-39	5	12	10	9	12
40-44	7	11	8	9	7
45-49	9	10	6	9	5
50-54	12	9	9	5	9
55-59	2	7	4	7	8
60-64	2	1	1	6	4
65-69	0	0	0	0	2
70 +	1	0	0	0	0
Missing Data	1	1	0	0	0
Total Drivers	63	79	66	87	78

¹ Values are based upon the year of the conviction.

Table 25: Court Disposition of DWI Arrests for Lea County and the State, 2016

Court Disposition of DWI Arrest ¹	Lea County	Statewide	Percent of Statewide
Total DWI Arrests	423	10,344	4.1%
DWI Arrests Resulting in Convictions	234	5,541	4.2%
DWI Arrests Resulting in Dismissals ²	17	1,512	1.1%
DWI Arrests Awaiting Disposition	172	3,291	5.2%

¹ These are the number of DWI arrests in 2016 and whether the case resulted in a conviction or dismissal, or is still awaiting court disposition, as reported in the NM MVD Citation Tracking System (CTS) as of December 2017.

² For this table, a very small number of "not guilty" rulings may be included in the category Dismissals.

Table 26: Average Number of Days from Date of DWI Arrest to Date of Court Disposition in Lea County and the State, 2016

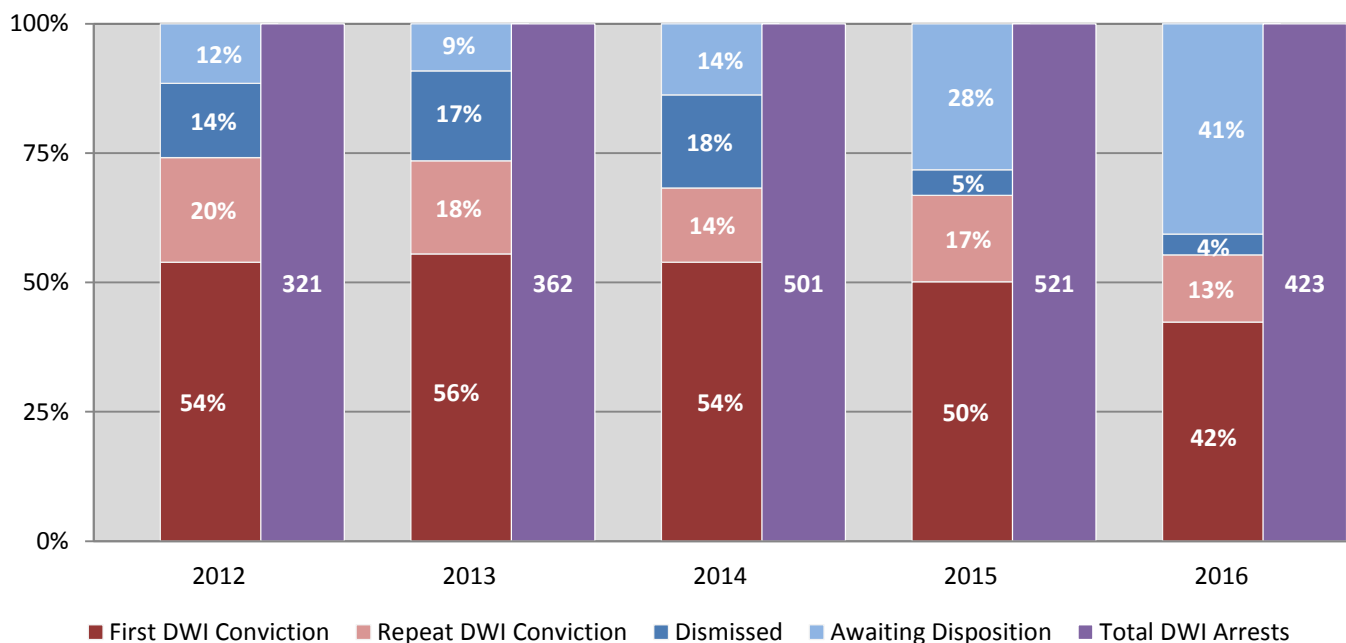
Court Disposition	Average Number of Days		Deviation from Statewide Average
	Lea County	Statewide	
DWI Conviction	107	157	-50
DWI Dismissal	212	179	33

Table 27: Court Disposition of DWI Arrests in Lea County, 2012-2016

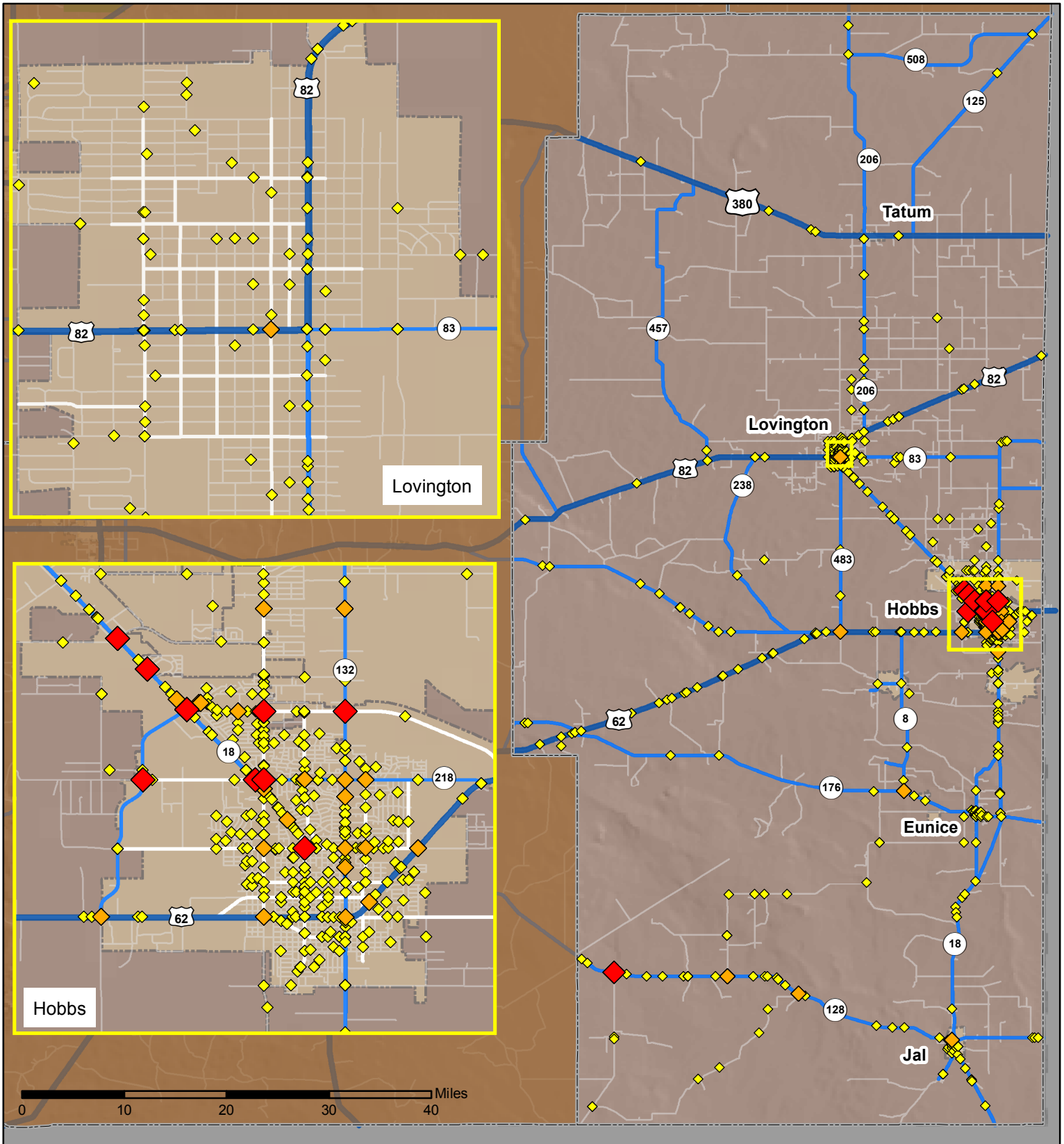
Year of DWI Arrest ¹	Court Disposition				Total DWI Arrests
	First DWI Conviction	Repeat DWI Conviction	Dismissed	Awaiting Disposition	
2012	173	65	46	37	321
2013	201	65	63	33	362
2014	270	72	90	69	501
2015	261	87	26	147	521
2016	179	55	17	172	423

¹ Values are based upon the year of the arrest.

Figure 14: Court Dispositions by Percentage of DWI Arrests in Lea County, 2012-2016



*Table 27 contains the values used to calculate percentages shown in Figure 14.



Legend



- Forest & Wildlife Areas
- Reservations & Pueblos
- County Boundaries
- City Boundaries
- Interstate Highways
- U.S. Highways
- State Highways
- Streets & Roadways

Crashes 2016

- 1 - 3 Crashes
- 4 - 6 Crashes
- 7 - 17 Crashes