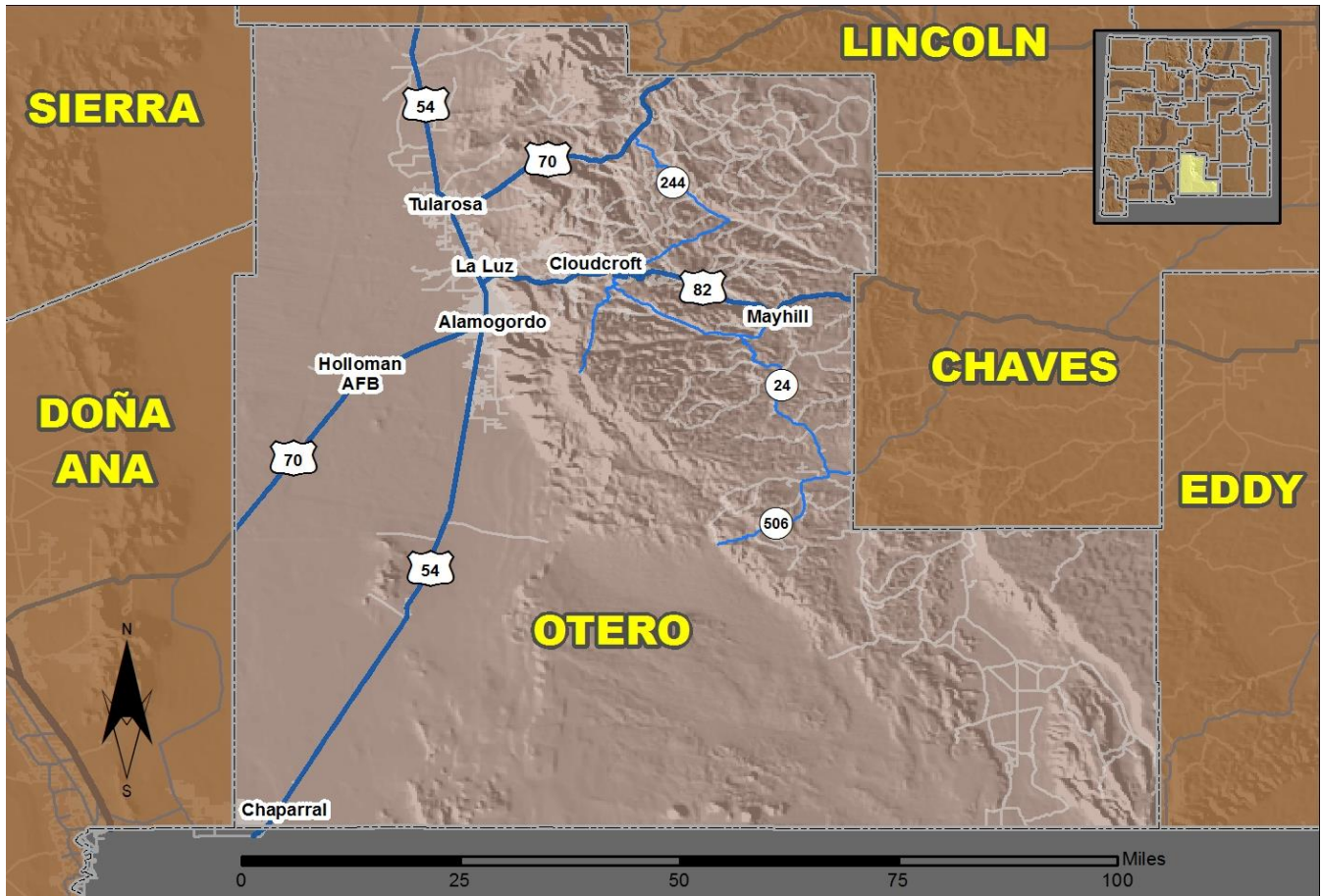


# 2016 Community Report

## Otero County



Produced for the New Mexico Department of Transportation,  
Traffic Safety Division, Traffic Records Bureau,  
Under Contract 5801 by the University of New Mexico,  
Geospatial and Population Studies, Traffic Research Unit

Distributed in compliance with New Mexico Statute 66-7-214  
as a reference source regarding New Mexico traffic crashes

For the purposes of this report, data are compiled by the University of New Mexico, Geospatial and Population Studies, Traffic Research Unit (TRU), on behalf of the New Mexico Department of Transportation (NMDOT). Data in this report may differ from that in other data sources, such as the Federal Fatality Analysis Reporting System (FARS), due to the timing of publications and rules for how data are compiled and maintained in Federal vs. State databases. If you have questions regarding this report, please contact the Traffic Safety Division at 505-827-0427.

<http://tru.unm.edu/Crash-Reports/Community-Reports/>

## Definitions

---

**Aggravated DWI** – A driver arrested for 1) driving with a BAC of 0.16 or higher, 2) driving under the influence of alcohol or drugs and causing bodily injury to a human being as a result, or 3) driving under the influence of alcohol or drugs and refusing to submit to a BAC test at the time of arrest for DWI.

**Alcohol-involved Crash** – A crash for which the Uniform Crash Report indicated that 1) a DWI citation was issued, 2) alcohol was a contributing factor, or 3) a person in control of a vehicle (including a pedestrian or pedalcyclist) was suspected of being under the influence of alcohol.

**Alcohol-involved Driver** – A person in control of a vehicle who was cited for DWI or indicated on the Uniform Crash Report as being either suspected or determined by testing to be under the influence of alcohol. There can be multiple alcohol-involved drivers in a single alcohol-involved crash.

**Crash** – A reported incident on a public roadway involving one or more motor vehicles that resulted in death, personal injury, or at least \$500 in property damage. Crashes on private property (such as a parking lot) are not included.

**DWI Arrest (Citation)** – In this report, a DWI arrest (a.k.a. a DWI citation) is a driver arrested for either DWI or aggravated DWI. New Mexico’s legal limit for presumption of driving while intoxicated (DWI) is 0.08 for non-commercial drivers older than 21 years of age, 0.04 for commercial vehicle drivers, and 0.02 for drivers younger than 21 years of age.

**DWI Conviction** – A driver convicted of driving under the intoxicating influence of alcohol, narcotics, or pathogenic drugs, including aggravated DWI.

**Fatal Crash** – A crash in which at least one person was killed. More than one person can be killed in a single fatal crash.

**Fatalities** – The number of people killed in a crash. The terms “killed” and “deaths” are synonymous with “fatalities.” A fatality is crash-related if it occurs at the time of the crash or if the person(s) involved in the crash dies within 30 days.

**Injury Crash** – A reported crash in which at least one person was injured. Injury crashes involve at least one suspected serious injury (Class A), suspected minor injury (Class B), or possible injury (Class C). Fatal crashes are not included.

**Missing Data** – An indication that the applicable field on the UCR form was left blank or contained an invalid code. Starting with crashes that occurred in 2012, improvements in the identification of missing data in the NMDOT crash database led to an increase in the reported amount of missing data.

**Pedalcyclist** – A person riding a mechanism of transport that is powered solely by pedals (a.k.a. bicyclist).

**Pedestrian** – A person on foot, walking, running, jogging, hiking, sitting or lying down who is involved in a motor vehicle traffic crash.

## Sources

---

**Crash Data** – New Mexico Department of Transportation, Traffic Safety Division, Traffic Records Bureau, Traffic Crash Database, as of the report date below. Crash data are compiled using NMDOT Uniform Crash Reports (UCR), submitted by law enforcement agencies in the state, for any incident on a public roadway involving one or more motor vehicles that resulted in death, injury, or at least \$500 in property damage. These reports are processed by the NMDOT Traffic Records Bureau and analyzed by the University of New Mexico, Geospatial and Population Studies, Traffic Research Unit (TRU).

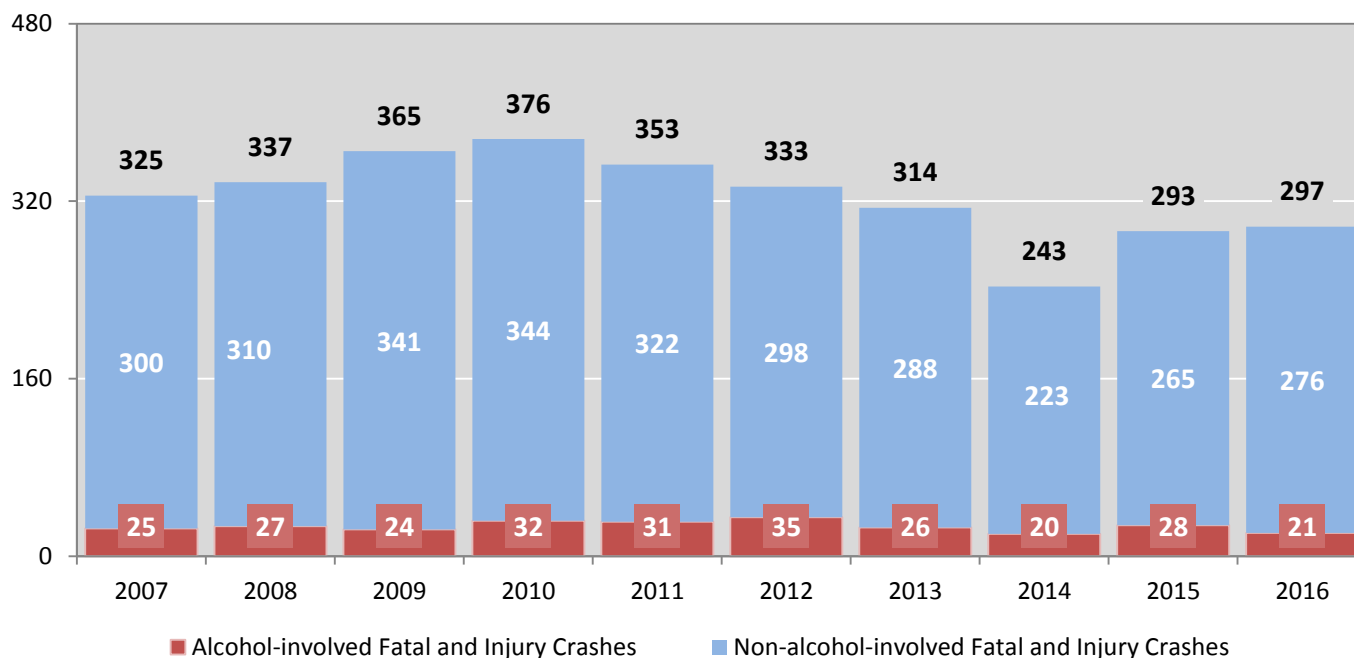
**DWI Citation Tracking System (CTS)** – New Mexico Taxation and Revenue Department (NM TRD), Motor Vehicle Division (MVD), DWI Citation Tracking System (CTS), as of December 2017. Repeat offenders are identified by the combination of account key, arrest date, and citation number. County data are based upon the county where the arrest took place. City data are based upon the city where the offender resides.

**Urban Areas** – New Mexico Department of Transportation, Asset Management and Planning, 2010 U.S. Census Urbanized Area Boundaries, NMDOT-Adjusted, and U.S. Census Urban Clusters, August 21, 2013. In crashes before 2013, “urban” was defined as a town or city with a population of at least 2,500 people.

**Table 1: Total Crashes and Alcohol-involved Crashes by Crash Severity in Otero County, 2007-2016**

Year	Total Crashes				Alcohol-involved Crashes			
	Fatal	Injury	Property Damage Only	Total	Fatal	Injury	Property Damage Only	Total
2007	6	319	761	<b>1,086</b>	1	24	33	<b>58</b>
2008	9	328	720	<b>1,057</b>	3	24	27	<b>54</b>
2009	8	357	739	<b>1,104</b>	3	21	31	<b>55</b>
2010	12	364	725	<b>1,101</b>	7	25	22	<b>54</b>
2011	12	341	812	<b>1,165</b>	7	24	38	<b>69</b>
2012	14	319	722	<b>1,055</b>	6	29	31	<b>66</b>
2013	7	307	658	<b>972</b>	2	24	26	<b>52</b>
2014	11	232	633	<b>876</b>	7	13	24	<b>44</b>
2015	10	283	688	<b>981</b>	2	26	20	<b>48</b>
2016	3	294	652	<b>949</b>	1	20	26	<b>47</b>

**Figure 1: Alcohol-involved Fatal and Injury Crashes Compared with Non-alcohol-involved Fatal and Injury Crashes in Otero County, 2007-2016**



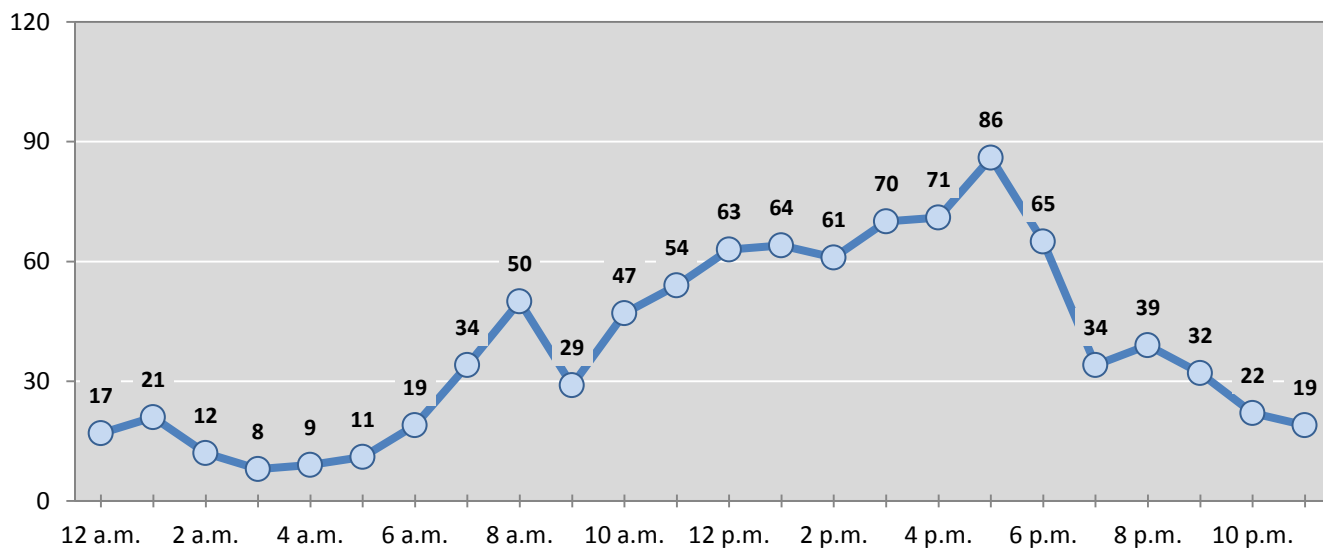
**Table 2: Crashes by Month in Otero County, 2012-2016**

Month	Crashes					5-Year Average
	2012	2013	2014	2015	2016	
January	79	75	65	86	81	<b>77</b>
February	76	79	69	79	78	<b>76</b>
March	68	92	81	72	93	<b>81</b>
April	91	84	89	68	88	<b>84</b>
May	95	88	87	83	71	<b>85</b>
June	93	91	81	95	81	<b>88</b>
July	91	71	66	83	86	<b>79</b>
August	104	76	71	78	63	<b>78</b>
September	98	72	79	92	76	<b>83</b>
October	81	89	62	89	70	<b>78</b>
November	88	76	41	73	78	<b>71</b>
December	91	79	85	83	84	<b>84</b>
<b>Total Crashes</b>	<b>1,055</b>	<b>972</b>	<b>876</b>	<b>981</b>	<b>949</b>	<b>967</b>

**Table 3: Alcohol-involved Crashes by Month in Otero County, 2012-2016**

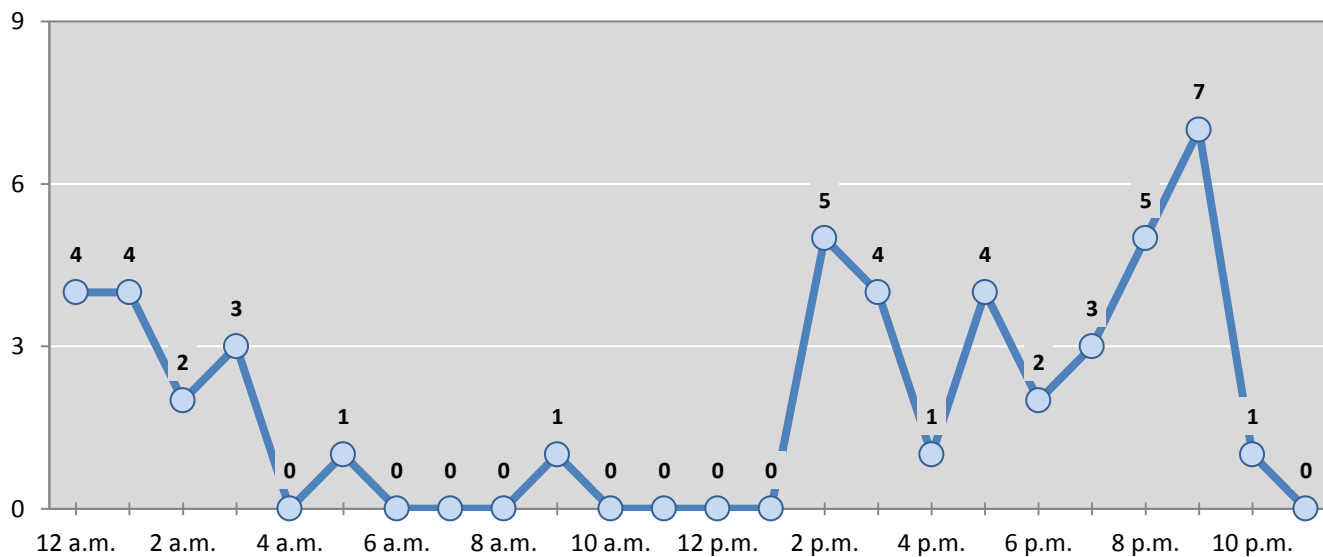
Month	Alcohol-involved Crashes					5-Year Average
	2012	2013	2014	2015	2016	
January	6	4	5	0	7	<b>4</b>
February	5	3	3	3	4	<b>4</b>
March	7	6	4	4	1	<b>4</b>
April	4	5	3	2	4	<b>4</b>
May	4	4	5	6	4	<b>5</b>
June	9	4	5	7	7	<b>6</b>
July	3	4	3	4	4	<b>4</b>
August	9	3	2	9	2	<b>5</b>
September	3	4	3	3	3	<b>3</b>
October	8	2	2	2	2	<b>3</b>
November	3	6	4	4	5	<b>4</b>
December	5	7	5	4	4	<b>5</b>
<b>Total Crashes</b>	<b>66</b>	<b>52</b>	<b>44</b>	<b>48</b>	<b>47</b>	<b>51</b>

**Figure 2: Crashes by Hour in Otero County, 2016**



\* In 2016, Otero County had 12 crashes for which hour data were missing.

**Figure 3: Alcohol-involved Crashes by Hour in Otero County, 2016**



\* In 2016, Otero County had 0 alcohol-involved crashes for which hour data were missing.

**Table 4: Alcohol-involved Crashes by Day of Week in Otero County, 2012-2016**

Day of Week	Alcohol-involved Crashes					5-Year Average
	2012	2013	2014	2015	2016	
Sunday	14	8	9	7	11	10
Monday	11	5	7	5	8	7
Tuesday	2	6	3	2	2	3
Wednesday	10	4	5	5	3	5
Thursday	7	8	3	9	8	7
Friday	5	6	6	8	5	6
Saturday	17	15	11	12	10	13
<b>Total Crashes</b>	<b>66</b>	<b>52</b>	<b>44</b>	<b>48</b>	<b>47</b>	<b>51</b>

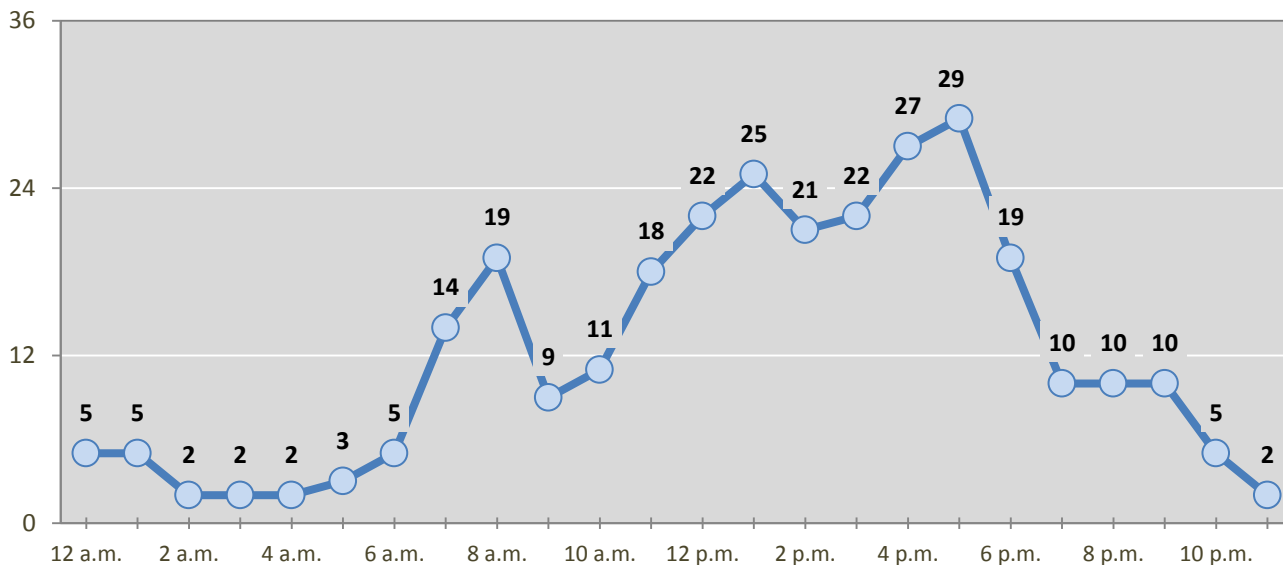
**Table 5: Fatal and Injury Crashes by Day of Week in Otero County, 2012-2016**

Day of Week	Fatal and Injury Crashes					5-Year Average
	2012	2013	2014	2015	2016	
Sunday	40	34	28	32	28	32
Monday	46	50	33	38	56	45
Tuesday	49	38	38	39	40	41
Wednesday	38	41	36	51	50	43
Thursday	49	39	31	49	35	41
Friday	64	60	40	47	49	52
Saturday	47	52	37	37	39	42
<b>Total Crashes</b>	<b>333</b>	<b>314</b>	<b>243</b>	<b>293</b>	<b>297</b>	<b>296</b>

**Table 6: Pedestrian and Pedalcyclist Crashes by Day of Week in Otero County, 2012-2016**

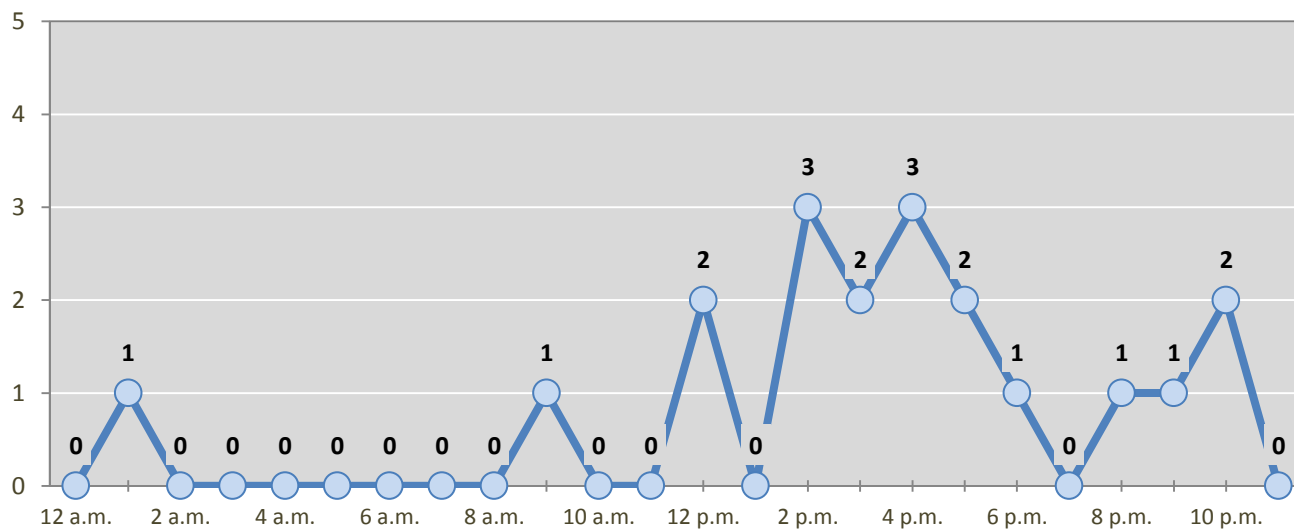
Day of Week	Pedestrian and Pedalcyclist Crashes					5-Year Average
	2012	2013	2014	2015	2016	
Sunday	1	0	3	1	0	1
Monday	3	1	3	2	7	3
Tuesday	1	2	2	6	1	2
Wednesday	2	2	4	4	2	3
Thursday	2	7	1	1	3	3
Friday	3	1	2	3	3	2
Saturday	2	2	2	1	3	2
<b>Total Crashes</b>	<b>14</b>	<b>15</b>	<b>17</b>	<b>18</b>	<b>19</b>	<b>17</b>

**Figure 4: Fatal and Injury Crashes by Hour in Otero County, 2016**



\* In 2016, Otero County had 0 crashes for which hour data were missing.

**Figure 5: Pedestrian and Pedalcyclist Crashes by Hour in Otero County, 2016**



\* In 2016, Otero County had 0 crashes for which hour data were missing.

**Table 7: Severity of Injuries to People in Crashes by Rural and Urban Location in Otero County, 2016**

Urban and Rural Locations by Alcohol-involvement	People in Crashes by Severity of Injuries					Total People
	Fatalities (Class K)	Suspected Serious Injuries (Class A)	Suspected Minor Injuries (Class B)	Possible Injuries (Class C)	No Apparent Injuries (Class O)	
<b>People in Alcohol-involved Crashes</b>	<b>1</b>	<b>4</b>	<b>8</b>	<b>20</b>	<b>74</b>	<b>107</b>
Urban	0	2	4	9	46	61
Rural Non-Interstate	1	2	4	11	28	46
Rural Interstate	0	0	0	0	0	0
<b>People in Crashes</b>	<b>3</b>	<b>22</b>	<b>123</b>	<b>268</b>	<b>1,865</b>	<b>2,281</b>
Urban	0	14	76	206	1,448	1,744
Rural Non-Interstate	3	8	47	62	417	537
Rural Interstate	0	0	0	0	0	0
<b>Percent in Alcohol-involved Crashes</b>	<b>33%</b>	<b>18%</b>	<b>7%</b>	<b>7%</b>	<b>4%</b>	<b>5%</b>

**Table 8: Total Crashes by Roadway System and Crash Severity in Otero County, 2012-2016**

Crash Severity by System	Crashes by Year					5-Year Average
	2012	2013	2014	2015	2016	
<b>Total Rural Interstate</b>	<b>7</b>	<b>0</b>	<b>1</b>	<b>0</b>	<b>0</b>	<b>1</b>
Fatal Crash	0	0	0	0	0	0
Injury Crash	2	0	0	0	0	0
Property Damage Only Crash	5	0	1	0	0	1
<b>Total Rural Non-Interstate</b>	<b>312</b>	<b>230</b>	<b>275</b>	<b>311</b>	<b>286</b>	<b>283</b>
Fatal Crash	12	5	8	6	3	7
Injury Crash	103	89	75	95	79	88
Property Damage Only Crash	197	136	192	210	204	188
<b>Total Urban</b>	<b>736</b>	<b>742</b>	<b>600</b>	<b>670</b>	<b>663</b>	<b>682</b>
Fatal Crash	2	2	3	4	0	2
Injury Crash	214	218	157	188	215	198
Property Damage Only Crash	520	522	440	478	448	482



**Table 9: Total Crashes by Crash Classification in Otero County, 2012-2016**

Crash Classification	Total Crashes by Year					5-Year Average
	2012	2013	2014	2015	2016	
Animal	74	61	74	69	90	74
Fixed Object	159	134	110	128	109	128
Other (Non-Collision)	37	23	20	25	19	25
Other (Object)	22	26	23	25	21	23
Other Vehicle	556	555	461	580	530	536
Overturn/Rollover	82	56	50	15	57	52
Parked Vehicle	83	81	98	69	86	83
Pedalcyclist	5	7	8	9	7	7
Pedestrian	12	8	9	9	13	10
Railroad Train	1	3	1	0	0	1
Rollover	0	0	2	42	11	11
Vehicle on Other Road	6	6	9	8	5	7
Missing Data	18	12	11	2	1	9
<b>Total Crashes</b>	<b>1,055</b>	<b>972</b>	<b>876</b>	<b>981</b>	<b>949</b>	<b>967</b>

**Table 10: Vehicles in Crashes by Vehicle Type in Otero County, 2012-2016**

Vehicle Type <sup>1</sup>	Vehicles in Crashes by Vehicle Type					5-Year Average
	2012	2013	2014	2015	2016	
Bus	6	4	3	1	6	4
Motorcycle	62	56	46	43	48	51
Passenger	838	786	698	778	804	781
Pedalcyclist	4	7	8	9	7	7
Pedestrian	10	8	9	9	12	10
Pickup	408	379	334	398	322	368
Semi	59	30	42	29	40	40
Van/SUV/4WD	298	294	291	347	327	311
Other Vehicle	16	29	10	20	10	17
Missing Data	86	88	84	73	60	78
<b>Total Vehicles</b>	<b>1,787</b>	<b>1,681</b>	<b>1,525</b>	<b>1,707</b>	<b>1,636</b>	<b>1,667</b>

<sup>1</sup> Pedestrians and pedalcyclists are counted as non-motorized vehicles, when involved in a crash with a motor vehicle. See Page 17 for data on drivers of non-motorized vehicles in crashes (i.e. pedestrians and pedalcyclists).

**Table 11: Motor Vehicle Drivers in Crashes by Vehicle Type and Age Group in Otero County, 2016**

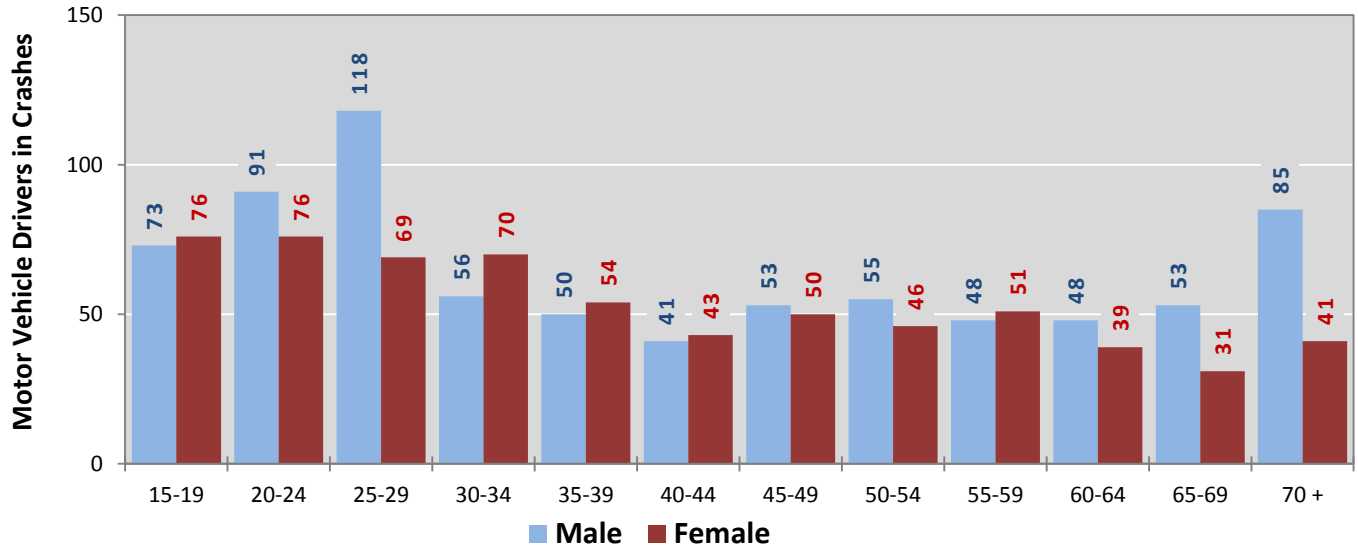
Age Groups	Motor Vehicle <sup>1</sup> Drivers by Vehicle Type and Age Group								Total Drivers
	Bus	Motor-cycle	Passenger	Pickup	Semi	Van 4WD SUV	Other Vehicle	Missing Data	
15-19	0	5	89	32	0	22	1	0	149
20-24	1	3	116	20	2	24	0	1	167
25-29	0	10	106	34	7	28	1	1	187
30-34	1	5	70	22	2	25	1	0	126
35-39	1	1	46	16	4	36	0	0	104
40-44	0	4	34	17	4	24	0	1	84
45-49	0	3	43	19	7	29	2	0	103
50-54	0	3	39	26	5	25	2	1	101
55-59	2	2	44	26	2	21	2	0	99
60-64	0	5	35	21	3	23	0	0	87
65-69	0	2	41	19	1	21	0	0	84
70 +	1	4	67	27	2	24	1	0	126
Missing Data	0	1	74	43	1	25	0	56	200
<b>Total Drivers</b>	<b>6</b>	<b>48</b>	<b>804</b>	<b>322</b>	<b>40</b>	<b>327</b>	<b>10</b>	<b>60</b>	<b>1,617</b>

**Table 12: Alcohol-involved Motor Vehicle Drivers in Crashes by Vehicle Type and Age Group in Otero County, 2016**

Age Groups	Alcohol-involved Motor Vehicle <sup>1</sup> Drivers by Vehicle Type and Age Group								Total Drivers
	Bus	Motor-cycle	Passenger	Pickup	Semi	Van 4WD SUV	Other Vehicle	Missing Data	
15-19	0	0	3	0	0	0	0	0	3
20-24	0	0	5	0	0	2	0	0	7
25-29	0	0	4	4	0	1	0	0	9
30-34	0	0	6	1	0	1	0	0	8
35-39	0	0	0	1	0	3	0	0	4
40-44	0	0	1	1	0	0	0	0	2
45-49	0	1	3	1	0	0	0	0	5
50-54	0	1	1	1	0	0	0	0	3
55-59	0	1	1	0	0	0	0	0	2
60-64	0	0	0	1	0	0	0	0	1
65-69	0	0	1	1	0	0	0	0	2
70 +	0	0	0	0	0	0	0	0	0
Missing Data	0	0	0	0	0	0	0	0	0
<b>Total Drivers</b>	<b>0</b>	<b>3</b>	<b>25</b>	<b>11</b>	<b>0</b>	<b>7</b>	<b>0</b>	<b>0</b>	<b>46</b>

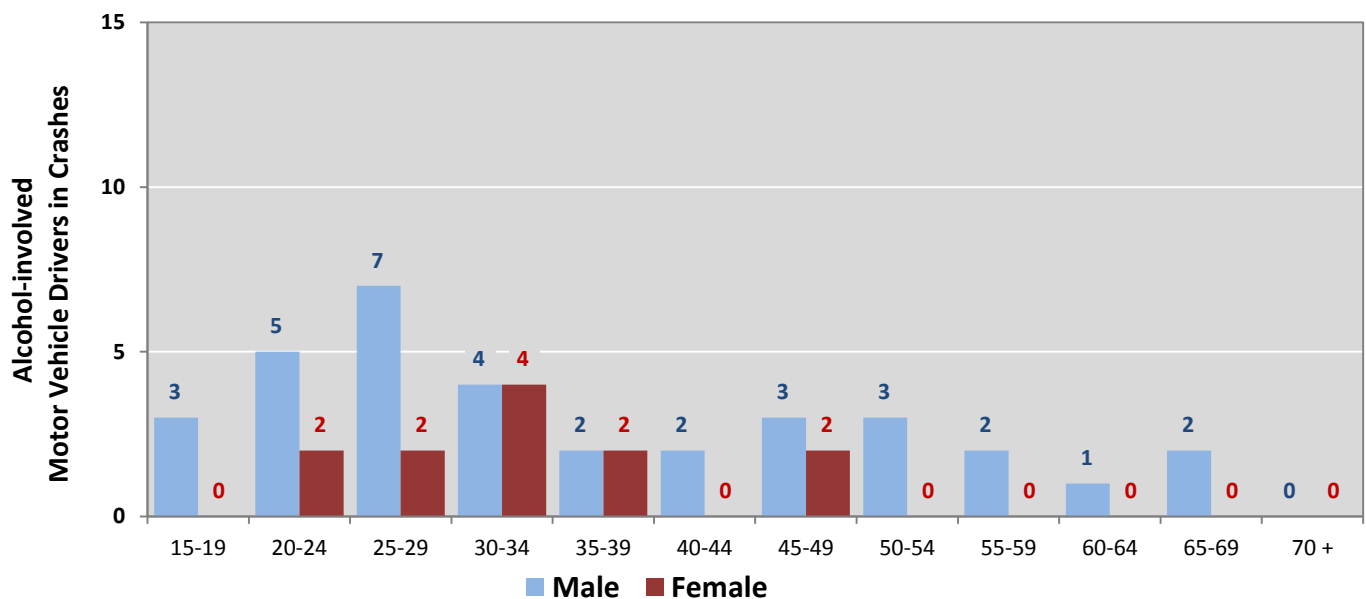
<sup>1</sup> See Page 17 for data on drivers of non-motorized vehicles in crashes (i.e. pedestrians and pedalcyclists).

**Figure 6: Motor Vehicle Drivers in Crashes by Age Group and Sex in Otero County, 2016**



\* In 2016, Otero County had 200 drivers in crashes for which age or sex data were missing.

**Figure 7: Alcohol-involved Motor Vehicle Drivers in Crashes by Age Group and Sex in Otero County, 2016**



\* In 2016, Otero County had 0 drivers in crashes for which age or sex data were missing.

**Table 13: Alcohol-involved Motor Vehicle Drivers Under 21 (Ages 15-20) in Crashes in Otero County, 2012-2016**

Age <sup>1</sup>	Year					5-Year Total
	2012	2013	2014	2015	2016	
15	0	0	0	0	0	0
16	1	0	0	0	2	3
17	1	0	1	2	1	5
18	2	2	1	2	0	7
19	1	2	1	1	0	5
20	0	1	0	2	1	4
<b>Total Drivers</b>	<b>5</b>	<b>5</b>	<b>3</b>	<b>7</b>	<b>4</b>	<b>24</b>

**Table 14: Motor Vehicle Drivers Under 21 (Ages 15-20) in Crashes by Age, Sex and Alcohol-involvement in Otero County, 2016**

Age <sup>1</sup>	Total Drivers				Alcohol-involved Drivers			
	Sex		Total Drivers	Percent of Total	Sex		Total Drivers	Percent of Total
	Male	Female			Male	Female		
15	3	4	7	4%	0	0	0	0%
16	19	10	29	17%	2	0	2	50%
17	20	21	41	24%	1	0	1	25%
18	19	23	42	24%	0	0	0	0%
19	12	18	30	17%	0	0	0	0%
20	12	13	25	14%	0	1	1	25%
<b>Total Drivers</b>	<b>85</b>	<b>89</b>	<b>174</b>	<b>100%</b>	<b>3</b>	<b>1</b>	<b>4</b>	<b>100%</b>

<sup>1</sup> For analysis of drivers under age 21, when the driver age or sex are not identified on the crash report (typically hit-and-run drivers), the driver data are considered unreliable and are excluded from the analysis.

**Table 15: Frequency of Contributing Factors in Crashes  
by Crash Severity in Otero County, 2016**

Contributing Factors	Frequency of Contributing Factor <sup>1</sup> by Crash Severity			
	Frequency in Fatal Crashes	Frequency in Injury Crashes	Frequency in Property Damage Only Crashes	Frequency in All Crashes
<b>Human</b>	<b>7</b>	<b>533</b>	<b>984</b>	<b>1,524</b>
Driver Inattention	1	191	381	573
Failed to Yield Right of Way	0	76	108	184
Excessive Speed	1	46	54	101
Following Too Closely	0	36	63	99
Other Improper Driving	0	34	59	93
Made Improper Turn	0	24	53	77
Improper Backing	0	2	47	49
Avoid No Contact - Vehicle	0	8	40	48
Alcohol Involved	1	20	26	47
Passed Stop Sign	0	18	21	39
Speed Too Fast for Conditions	0	16	22	38
Drove Left Of Center	0	13	19	32
Disregarded Traffic Signal	0	15	15	30
Avoid No Contact - Other	0	6	23	29
Improper Overtaking	1	10	17	28
Improper Lane Change	1	6	12	19
Drug Involved	1	2	8	11
Vehicle Skidded Before Brake	0	4	4	8
Pedestrian Error	1	3	1	5
Cell Phone	0	2	2	4
Driverless Moving Vehicle	0	0	4	4
Failed to Yield to Emergency Vehicle	0	1	1	2
Failed to Yield to Police Vehicle	0	0	2	2
High Speed Pursuit	0	0	2	2
Texting	0	0	0	0
<b>Vehicle</b>	<b>0</b>	<b>6</b>	<b>14</b>	<b>20</b>
Other Mechanical Defect	0	2	6	8
Inadequate Brakes	0	3	3	6
Defective Steering	0	0	3	3
Defective Tires	0	1	2	3
<b>Environment</b>	<b>0</b>	<b>1</b>	<b>1</b>	<b>2</b>
Low Visibility Due to Smoke	0	0	1	1
Traffic Control Not Functioning	0	1	0	1
Road Defect	0	0	0	0
<b>Other</b>	<b>1</b>	<b>230</b>	<b>493</b>	<b>724</b>
None	1	199	415	615
Other - No Driver Error	0	31	78	109

<sup>1</sup> Multiple contributing factors may be reported for any vehicle in a crash.

**Table 16: People in Crashes by Crash Classification and Severity of Injuries in Otero County, 2016**

Crash Classification	People in Crashes by Severity of Injuries					Total People
	Fatalities (Class K)	Suspected Serious Injuries (Class A)	Suspected Minor Injuries (Class B)	Possible Injuries (Class C)	No Apparent Injuries (Class O)	
Animal	0	1	5	3	122	131
Fixed Object	1	0	8	17	126	152
Other (Non-Collision)	0	0	3	5	16	24
Other (Object)	0	0	0	4	36	40
Other Vehicle	0	14	65	204	1,279	1,562
Overturn/Rollover	0	0	21	27	51	99
Parked Vehicle	0	2	4	1	188	195
Pedalcyclist	0	0	6	1	8	15
Pedestrian	1	1	6	5	24	37
Railroad Train	0	0	0	0	0	0
Rollover	1	4	4	1	5	15
Vehicle on Other Road	0	0	1	0	8	9
Missing Data	0	0	0	0	2	2
<b>Total People</b>	<b>3</b>	<b>22</b>	<b>123</b>	<b>268</b>	<b>1,865</b>	<b>2,281</b>

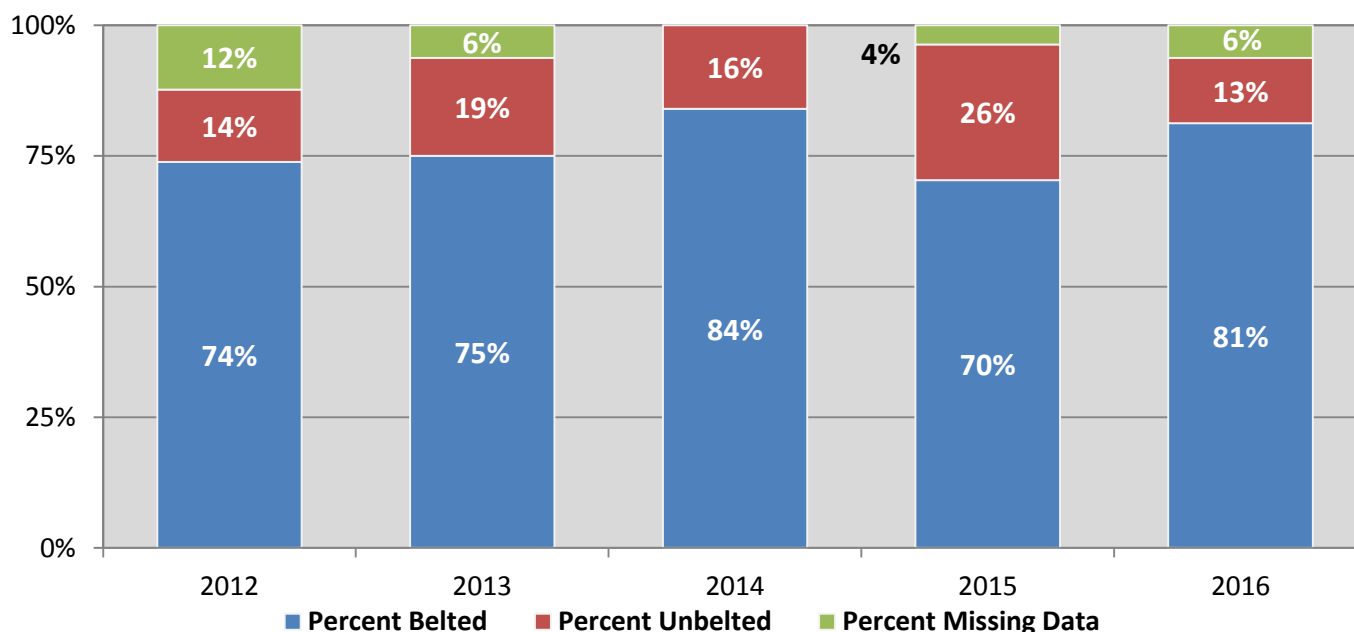
**Table 17: Killed or Injured Unbelted People in Crashes by Sex and Age Group in Otero County, 2016**

Age Groups	Unbelted People Killed or Injured <sup>1,2</sup>				Total People
	Male	Percent of Male	Female	Percent of Female	
0-4	0	0%	0	0%	0
5-9	1	17%	0	0%	1
10-14	0	0%	0	0%	0
15-19	1	17%	1	20%	2
20-24	0	0%	2	40%	2
25-29	2	33%	0	0%	2
30-34	0	0%	1	20%	1
35-39	1	17%	0	0%	1
40-44	0	0%	0	0%	0
45-49	0	0%	0	0%	0
50-54	0	0%	0	0%	0
55-59	1	17%	0	0%	1
60-64	0	0%	0	0%	0
65-69	0	0%	0	0%	0
70 +	0	0%	1	20%	1
Missing Data	0	0%	0	0%	0
<b>Total People</b>	<b>6</b>	<b>100%</b>	<b>5</b>	<b>100%</b>	<b>11</b>

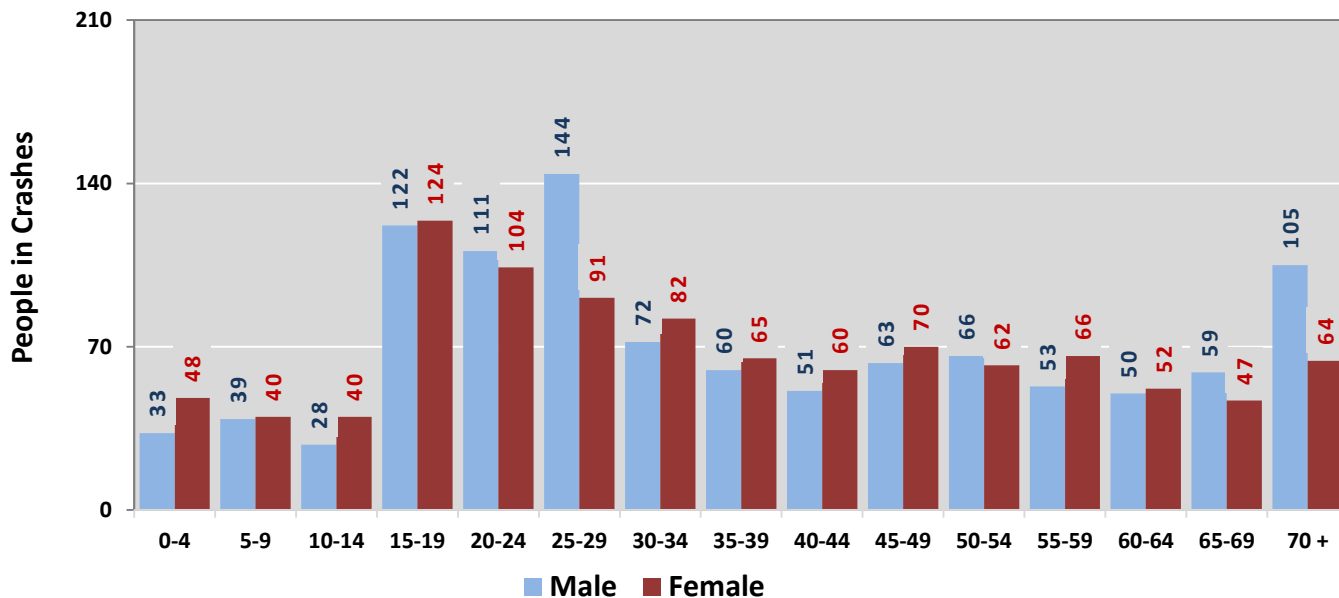
<sup>1</sup> People injured are in one of three categories: suspected serious injury, suspected minor injury, or possible injury.

<sup>2</sup> Excludes people in or on buses, heavy trucks, motorcycles, or ATVs.

**Figure 8: Seatbelt Use by People in Crashes with Fatal or Suspected Serious Injuries in Otero County, 2012-2016**

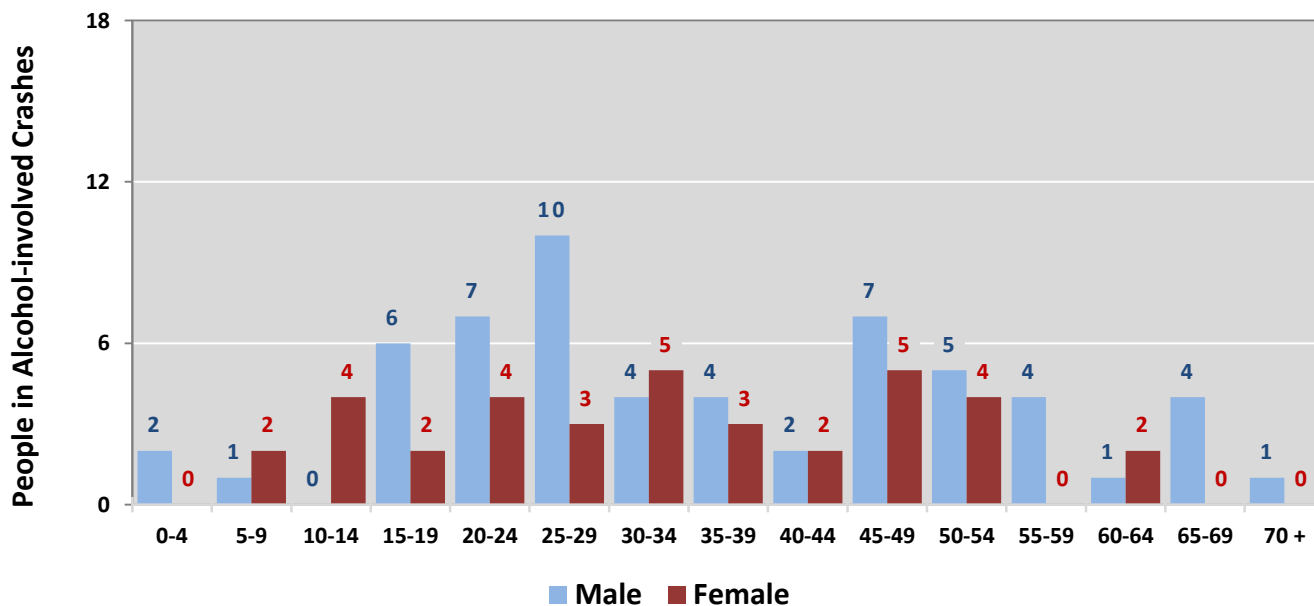


**Figure 9: People in Crashes by Age Group and Sex in Otero County, 2016**



\* In 2016, Otero County had 210 people in crashes for which age or sex data were missing.

**Figure 10: People in Alcohol-involved Crashes by Age Group and Sex in Otero County, 2016**



\* In 2016, Otero County had 13 people in alcohol-involved crashes for which age or sex data were missing.



**Table 18: Pedestrians and Pedalcyclists in Crashes by Age Group in Otero County, 2012-2016**

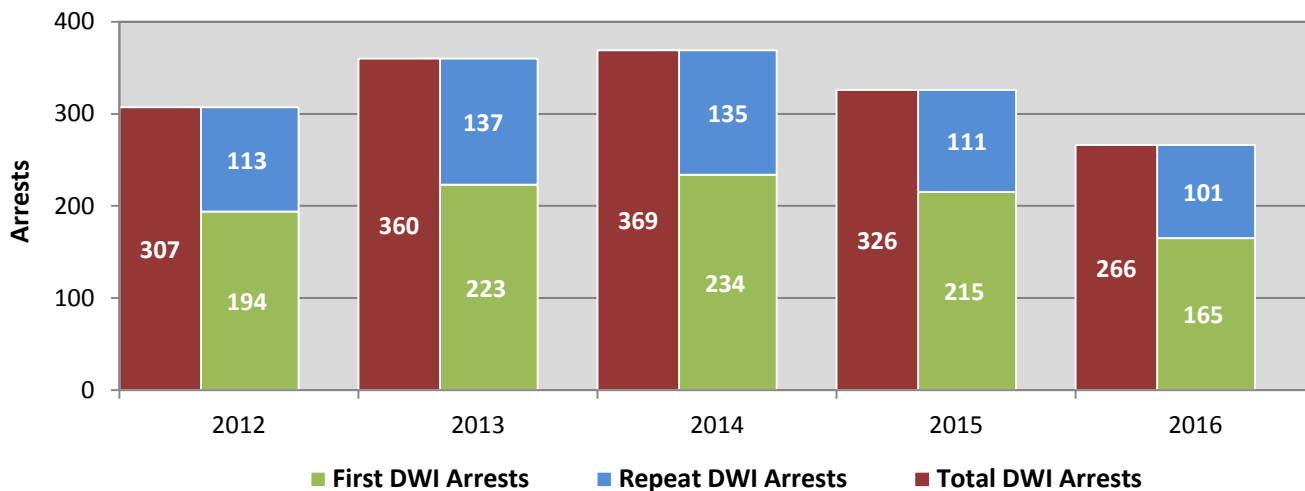
Age Groups	Pedestrians and Pedalcyclists <sup>1</sup> in Crashes					5-Year Total People
	2012	2013	2014	2015	2016	
0-4	2	0	0	0	0	2
5-9	0	1	0	1	0	2
10-14	1	0	1	1	2	5
15-19	1	3	4	2	4	14
20-24	2	2	0	3	0	7
25-29	1	0	1	3	0	5
30-34	1	2	2	0	1	6
35-39	0	0	3	0	2	5
40-44	2	0	1	2	1	6
45-49	1	2	0	0	3	6
50-54	0	0	1	1	3	5
55-59	1	2	1	0	0	4
60-64	1	0	1	2	0	4
65-69	0	0	0	0	1	1
70 +	0	0	0	1	0	1
Missing Data	1	3	2	2	2	10
<b>Total People</b>	<b>14</b>	<b>15</b>	<b>17</b>	<b>18</b>	<b>19</b>	<b>83</b>

**Table 19: Pedestrians and Pedalcyclists in Crashes by Alcohol Involvement and Severity of Injuries in Otero County, 2016**

Alcohol Involvement	Pedestrians and Pedalcyclists <sup>1</sup> in Crashes					Total People
	Fatalities (Class K)	Suspected Serious Injuries (Class A)	Suspected Minor Injuries (Class B)	Possible Injuries (Class C)	No Apparent Injury (Class O)	
<b>Total Pedalcyclists</b>	<b>0</b>	<b>0</b>	<b>6</b>	<b>1</b>	<b>0</b>	<b>7</b>
Involved	0	0	0	0	0	0
Not Involved	0	0	6	1	0	7
<b>Total Pedestrians</b>	<b>1</b>	<b>1</b>	<b>5</b>	<b>5</b>	<b>0</b>	<b>12</b>
Involved	1	0	0	0	0	1
Not Involved	0	1	5	5	0	11
<b>Total People</b>	<b>1</b>	<b>1</b>	<b>11</b>	<b>6</b>	<b>0</b>	<b>19</b>

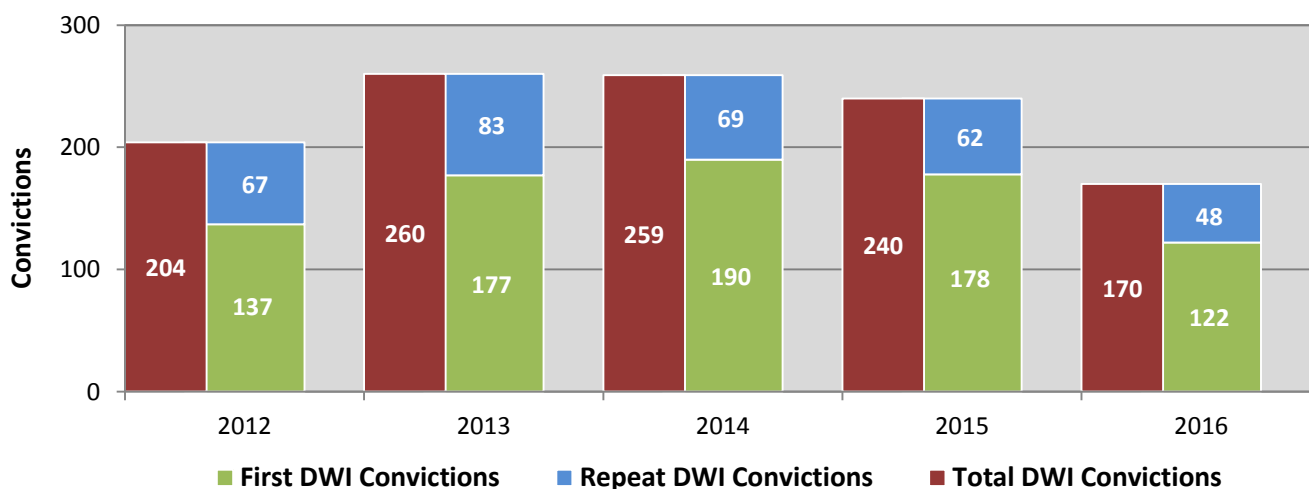
<sup>1</sup> Pedestrians and pedalcyclists are counted as non-motorized vehicles, when involved in a crash with a motor vehicle.

**Figure 11: DWI Arrests in Otero County,  
Showing First and Repeat DWI Arrests, 2012-2016**



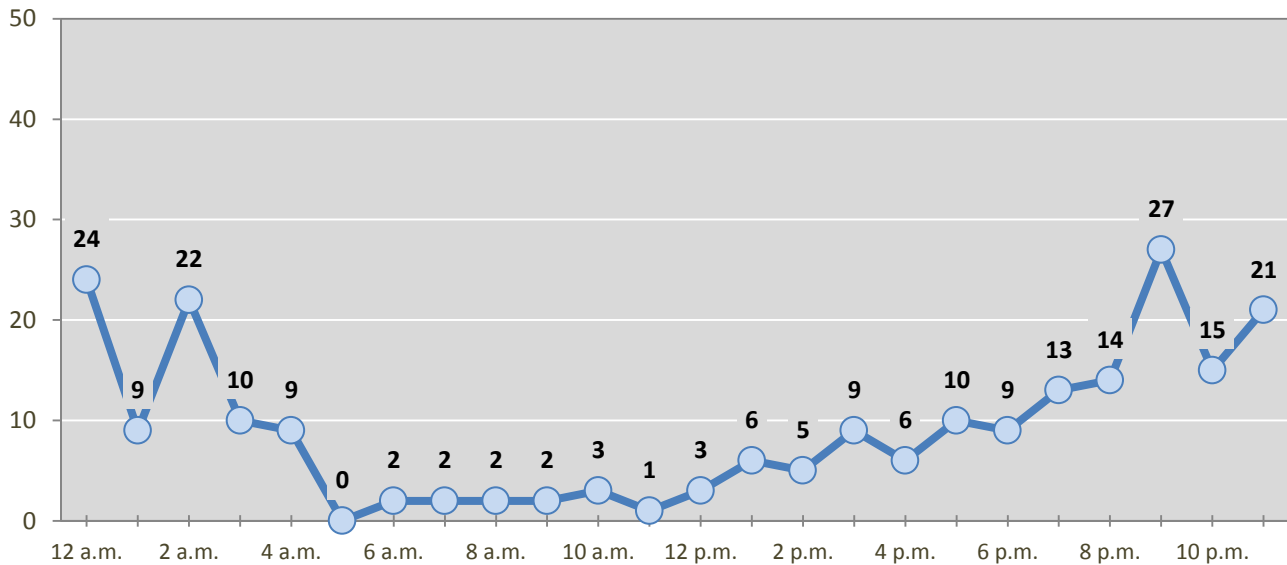
\*Values are based upon the year of the arrest.

**Figure 12: DWI Convictions in Otero County,  
Showing First and Repeat DWI Convictions, 2012-2016**



\*Values are based upon the year of the conviction.

**Figure 13: DWI Arrests by Hour in Otero County, 2016**



\* In 2016, Otero County had 42 arrests for which hour data were missing.

**Table 20: DWI Arrests by Day of Week in Otero County, 2012-2016**

Day of Week	Year					5-Year Average
	2012	2013	2014	2015	2016	
Sunday	70	76	84	68	48	69
Monday	31	31	44	28	29	33
Tuesday	21	42	32	22	21	28
Wednesday	36	34	35	40	25	34
Thursday	28	34	37	45	30	35
Friday	32	51	51	52	44	46
Saturday	89	92	86	71	69	81
<b>Total Arrests</b>	<b>307</b>	<b>360</b>	<b>369</b>	<b>326</b>	<b>266</b>	<b>326</b>

**Table 21: Driver First DWI Arrests by Age Group in Otero County, 2012-2016**

Age Groups	Driver First DWI Arrests <sup>1</sup>				
	2012	2013	2014	2015	2016
15-19	15	17	13	17	7
20-24	46	57	64	39	37
25-29	35	44	40	54	39
30-34	21	34	27	26	15
35-39	15	10	16	10	16
40-44	14	12	14	12	7
45-49	14	8	23	10	9
50-54	7	15	15	11	11
55-59	13	9	9	13	8
60-64	6	4	2	8	4
65-69	5	8	2	3	6
70 +	2	4	4	2	1
Missing Data	1	1	5	10	5
<b>Total Drivers</b>	<b>194</b>	<b>223</b>	<b>234</b>	<b>215</b>	<b>165</b>

<sup>1</sup> Values are based upon the year of the arrest.

**Table 22: Driver Repeat DWI Arrests by Age Group in Otero County, 2012-2016**

Age Groups	Driver Repeat DWI Arrests <sup>1</sup>				
	2012	2013	2014	2015	2016
15-19	1	2	2	0	0
20-24	6	14	10	5	6
25-29	20	12	10	17	17
30-34	12	18	20	16	13
35-39	12	15	18	12	15
40-44	14	20	19	18	11
45-49	15	18	20	11	11
50-54	15	18	18	11	8
55-59	9	11	8	5	11
60-64	4	6	4	8	4
65-69	1	2	4	5	2
70 +	4	1	1	1	2
Missing Data	0	0	1	2	1
<b>Total Drivers</b>	<b>113</b>	<b>137</b>	<b>135</b>	<b>111</b>	<b>101</b>

<sup>1</sup> Values are based upon the year of the arrest.

**Table 23: Driver First DWI Convictions by Age Group in Otero County, 2012-2016**

Age Groups	Driver First DWI Convictions <sup>1</sup>				
	2012	2013	2014	2015	2016
15-19	8	14	11	9	4
20-24	43	38	54	38	29
25-29	26	34	32	35	29
30-34	11	28	20	24	16
35-39	9	14	7	14	11
40-44	9	15	12	13	4
45-49	6	8	15	9	8
50-54	8	10	14	9	3
55-59	8	5	9	12	9
60-64	5	2	5	3	5
65-69	4	4	4	3	3
70 +	0	4	2	3	0
Missing Data	0	1	5	6	1
<b>Total Drivers</b>	<b>137</b>	<b>177</b>	<b>190</b>	<b>178</b>	<b>122</b>

<sup>1</sup> Values are based upon the year of the conviction.

**Table 24: Driver Repeat DWI Convictions by Age Group in Otero County, 2012-2016**

Age Groups	Driver Repeat DWI Convictions <sup>1</sup>				
	2012	2013	2014	2015	2016
15-19	0	1	0	0	0
20-24	2	11	4	5	2
25-29	12	7	6	9	8
30-34	10	13	11	3	7
35-39	7	8	9	12	6
40-44	10	14	9	10	7
45-49	11	8	12	7	6
50-54	7	12	10	9	5
55-59	4	5	3	1	4
60-64	2	2	4	1	1
65-69	2	1	1	4	1
70 +	0	1	0	1	0
Missing Data	0	0	0	0	1
<b>Total Drivers</b>	<b>67</b>	<b>83</b>	<b>69</b>	<b>62</b>	<b>48</b>

<sup>1</sup> Values are based upon the year of the conviction.

**Table 25: Court Disposition of DWI Arrests for Otero County and the State, 2016**

Court Disposition of DWI Arrest <sup>1</sup>	Otero County	Statewide	Percent of Statewide
Total DWI Arrests	266	10,344	2.6%
DWI Arrests Resulting in Convictions	143	5,541	2.6%
DWI Arrests Resulting in Dismissals <sup>2</sup>	27	1,512	1.8%
DWI Arrests Awaiting Disposition	96	3,291	2.9%

<sup>1</sup> These are the number of DWI arrests in 2016 and whether the case resulted in a conviction or dismissal, or is still awaiting court disposition, as reported in the NM MVD Citation Tracking System (CTS) as of December 2017.

<sup>2</sup> For this table, a very small number of "not guilty" rulings may be included in the category Dismissals.

**Table 26: Average Number of Days from Date of DWI Arrest to Date of Court Disposition in Otero County and the State, 2016**

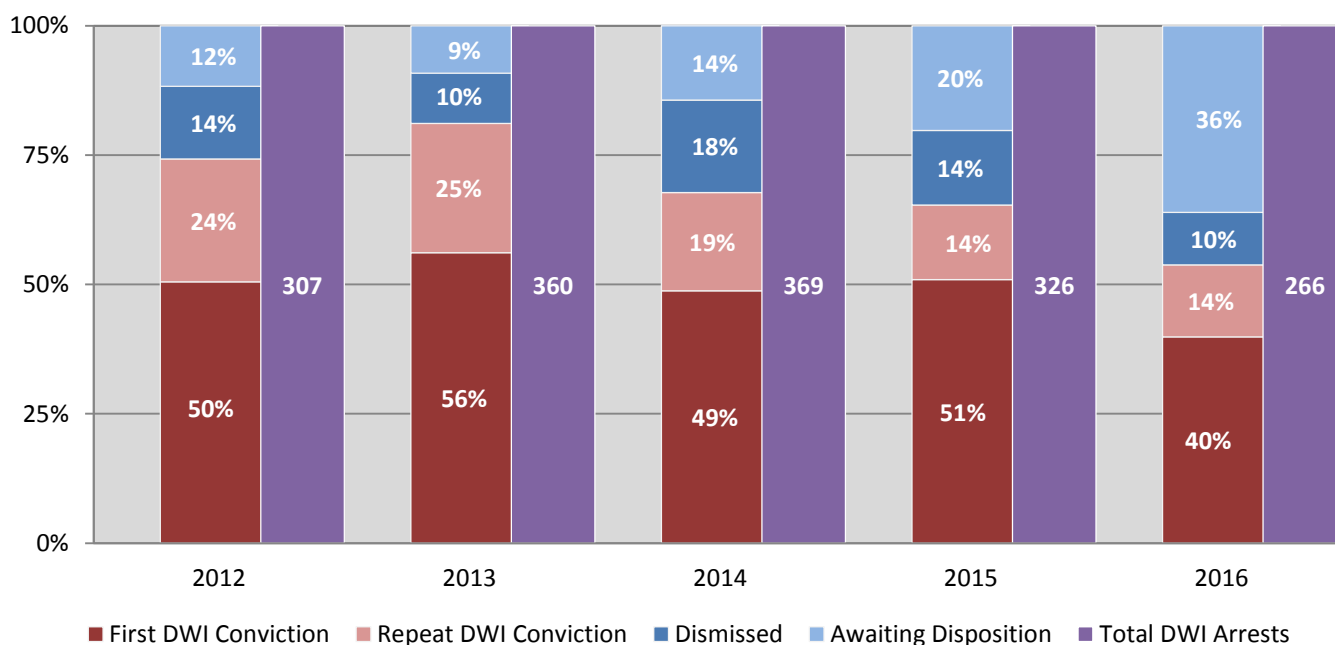
Court Disposition	Average Number of Days		Deviation from Statewide Average
	Otero County	Statewide	
DWI Conviction	110	157	-47
DWI Dismissal	161	179	-18

**Table 27: Court Disposition of DWI Arrests in Otero County, 2012-2016**

Year of DWI Arrest <sup>1</sup>	Court Disposition				Total DWI Arrests
	First DWI Conviction	Repeat DWI Conviction	Dismissed	Awaiting Disposition	
2012	155	73	43	36	307
2013	202	90	35	33	360
2014	180	70	66	53	369
2015	166	47	47	66	326
2016	106	37	27	96	266

<sup>1</sup> Values are based upon the year of the arrest.

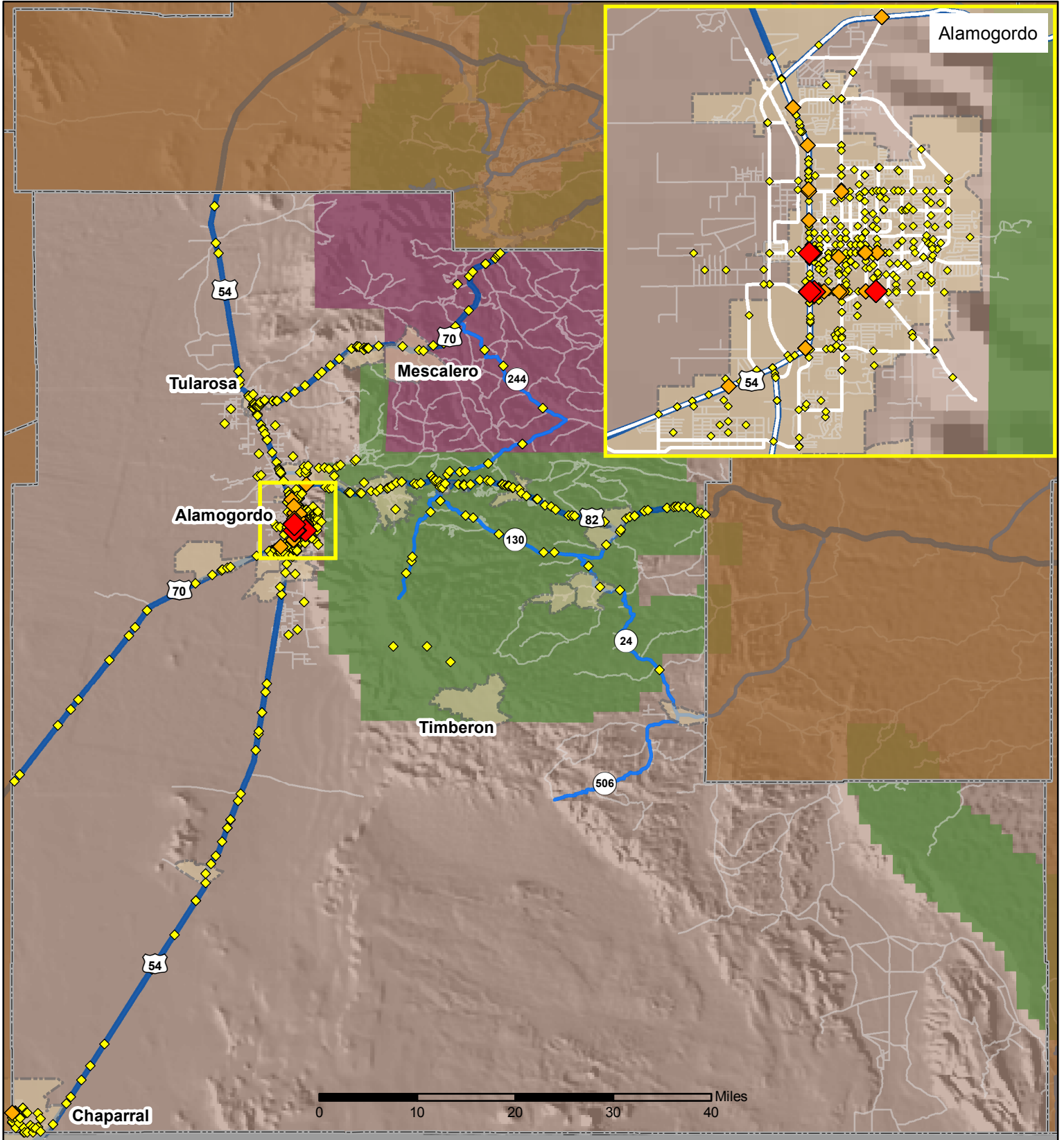
**Figure 14: Court Dispositions by Percentage of DWI Arrests in Otero County, 2012-2016**



\*Table 27 contains the values used to calculate percentages shown in Figure 14.

# Crashes in Otero County, New Mexico, 2016

Map created by the Traffic Research Unit, Geospatial & Population Studies at UNM



## Legend



- |                         |                     |
|-------------------------|---------------------|
| Forest & Wildlife Areas | Interstate Highways |
| Reservations & Pueblos  | U.S. Highways       |
| County Boundaries       | State Highways      |
| City Boundaries         | Streets & Roadways  |

## Crashes 2016

- 1 - 4 Crashes
- 5 - 10 Crashes
- 11 - 18 Crashes

Data Source: NMDOT Crash File 2016  
<http://tru.unm.edu> CO#5801 tru@unm.edu