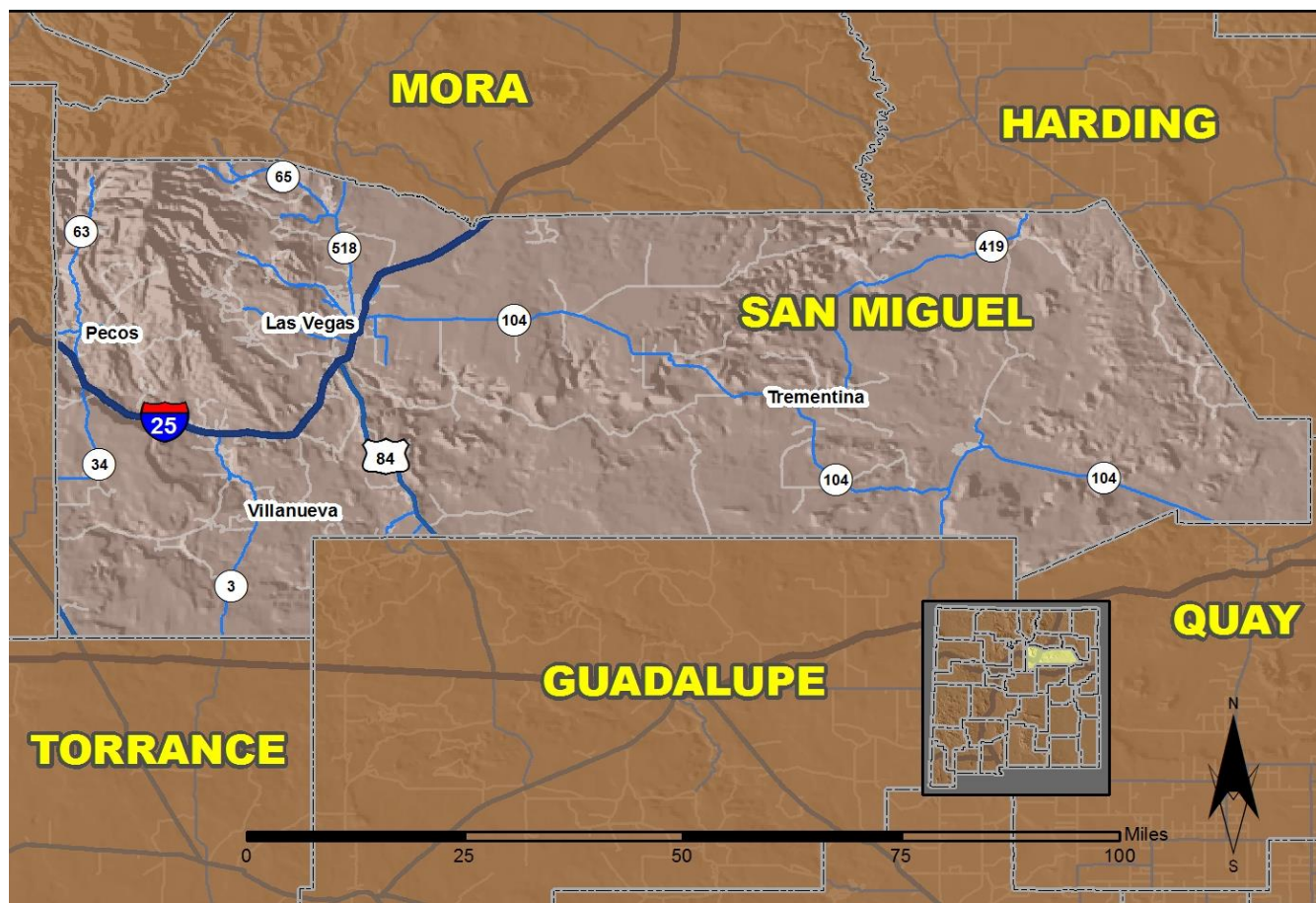


2016 Community Report

San Miguel County



Produced for the New Mexico Department of Transportation,
Traffic Safety Division, Traffic Records Bureau,
Under Contract 5801 by the University of New Mexico,
Geospatial and Population Studies, Traffic Research Unit

Distributed in compliance with New Mexico Statute 66-7-214
as a reference source regarding New Mexico traffic crashes

For the purposes of this report, data are compiled by the University of New Mexico, Geospatial and Population Studies, Traffic Research Unit (TRU), on behalf of the New Mexico Department of Transportation (NMDOT). Data in this report may differ from that in other data sources, such as the Federal Fatality Analysis Reporting System (FARS), due to the timing of publications and rules for how data are compiled and maintained in Federal vs. State databases. If you have questions regarding this report, please contact the Traffic Safety Division at 505-827-0427.

<http://tru.unm.edu/Crash-Reports/Community-Reports/>

Definitions

Aggravated DWI – A driver arrested for 1) driving with a BAC of 0.16 or higher, 2) driving under the influence of alcohol or drugs and causing bodily injury to a human being as a result, or 3) driving under the influence of alcohol or drugs and refusing to submit to a BAC test at the time of arrest for DWI.

Alcohol-involved Crash – A crash for which the Uniform Crash Report indicated that 1) a DWI citation was issued, 2) alcohol was a contributing factor, or 3) a person in control of a vehicle (including a pedestrian or pedalcyclist) was suspected of being under the influence of alcohol.

Alcohol-involved Driver – A person in control of a vehicle who was cited for DWI or indicated on the Uniform Crash Report as being either suspected or determined by testing to be under the influence of alcohol. There can be multiple alcohol-involved drivers in a single alcohol-involved crash.

Crash – A reported incident on a public roadway involving one or more motor vehicles that resulted in death, personal injury, or at least \$500 in property damage. Crashes on private property (such as a parking lot) are not included.

DWI Arrest (Citation) – In this report, a DWI arrest (a.k.a. a DWI citation) is a driver arrested for either DWI or aggravated DWI. New Mexico’s legal limit for presumption of driving while intoxicated (DWI) is 0.08 for non-commercial drivers older than 21 years of age, 0.04 for commercial vehicle drivers, and 0.02 for drivers younger than 21 years of age.

DWI Conviction – A driver convicted of driving under the intoxicating influence of alcohol, narcotics, or pathogenic drugs, including aggravated DWI.

Fatal Crash – A crash in which at least one person was killed. More than one person can be killed in a single fatal crash.

Fatalities – The number of people killed in a crash. The terms “killed” and “deaths” are synonymous with “fatalities.” A fatality is crash-related if it occurs at the time of the crash or if the person(s) involved in the crash dies within 30 days.

Injury Crash – A reported crash in which at least one person was injured. Injury crashes involve at least one suspected serious injury (Class A), suspected minor injury (Class B), or possible injury (Class C). Fatal crashes are not included.

Missing Data – An indication that the applicable field on the UCR form was left blank or contained an invalid code. Starting with crashes that occurred in 2012, improvements in the identification of missing data in the NMDOT crash database led to an increase in the reported amount of missing data.

Pedalcyclist – A person riding a mechanism of transport that is powered solely by pedals (a.k.a. bicyclist).

Pedestrian – A person on foot, walking, running, jogging, hiking, sitting or lying down who is involved in a motor vehicle traffic crash.

Sources

Crash Data – New Mexico Department of Transportation, Traffic Safety Division, Traffic Records Bureau, Traffic Crash Database, as of the report date below. Crash data are compiled using NMDOT Uniform Crash Reports (UCR), submitted by law enforcement agencies in the state, for any incident on a public roadway involving one or more motor vehicles that resulted in death, injury, or at least \$500 in property damage. These reports are processed by the NMDOT Traffic Records Bureau and analyzed by the University of New Mexico, Geospatial and Population Studies, Traffic Research Unit (TRU).

DWI Citation Tracking System (CTS) – New Mexico Taxation and Revenue Department (NM TRD), Motor Vehicle Division (MVD), DWI Citation Tracking System (CTS), as of December 2017. Repeat offenders are identified by the combination of account key, arrest date, and citation number. County data are based upon the county where the arrest took place. City data are based upon the city where the offender resides.

Urban Areas – New Mexico Department of Transportation, Asset Management and Planning, 2010 U.S. Census Urbanized Area Boundaries, NMDOT-Adjusted, and U.S. Census Urban Clusters, August 21, 2013. In crashes before 2013, “urban” was defined as a town or city with a population of at least 2,500 people.

Table 1: Total Crashes and Alcohol-involved Crashes by Crash Severity in San Miguel County, 2007-2016

Year	Total Crashes				Alcohol-involved Crashes			
	Fatal	Injury	Property Damage Only	Total	Fatal	Injury	Property Damage Only	Total
2007	6	77	227	310	2	12	8	22
2008	9	78	223	310	5	12	11	28
2009	7	101	340	448	3	12	15	30
2010	10	127	371	508	4	15	22	41
2011	7	136	463	606	4	22	21	47
2012	8	112	364	484	5	12	22	39
2013	5	100	288	393	2	17	19	38
2014	3	123	365	491	2	12	13	27
2015	4	157	409	570	0	15	17	32
2016	7	140	388	535	4	8	15	27

Figure 1: Alcohol-involved Fatal and Injury Crashes Compared to Non-alcohol-involved Fatal and Injury Crashes in San Miguel County, 2007-2016

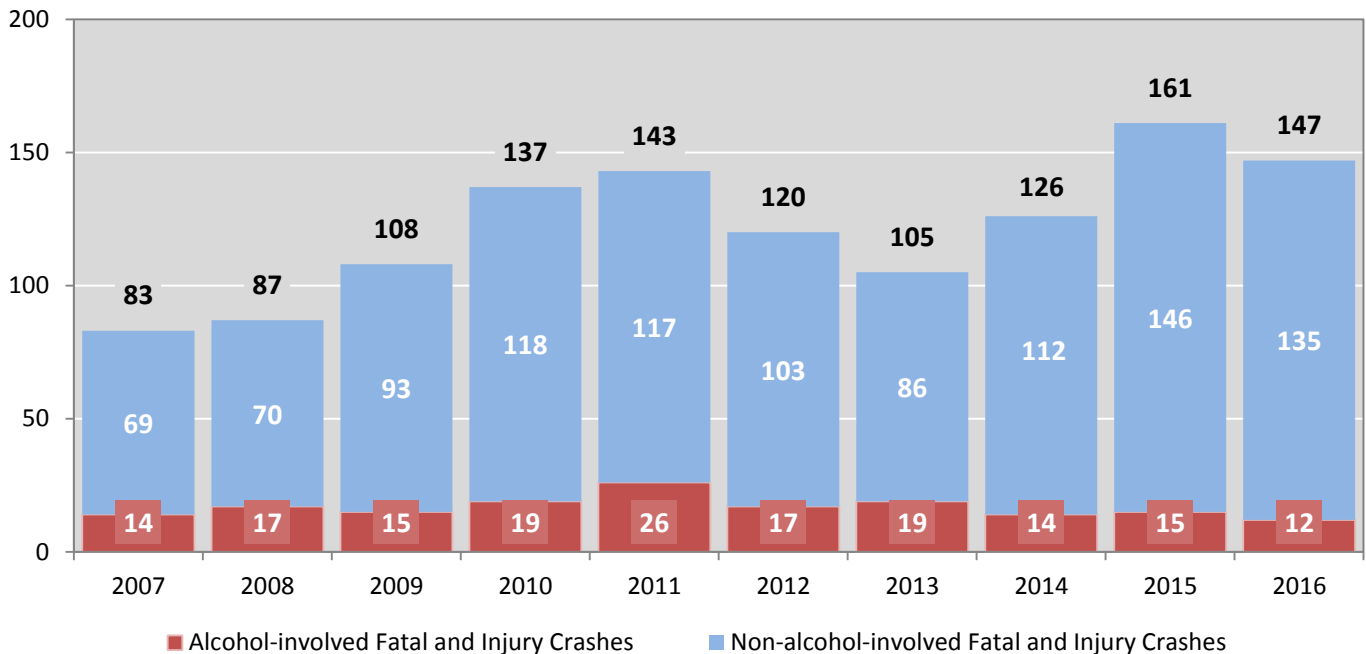


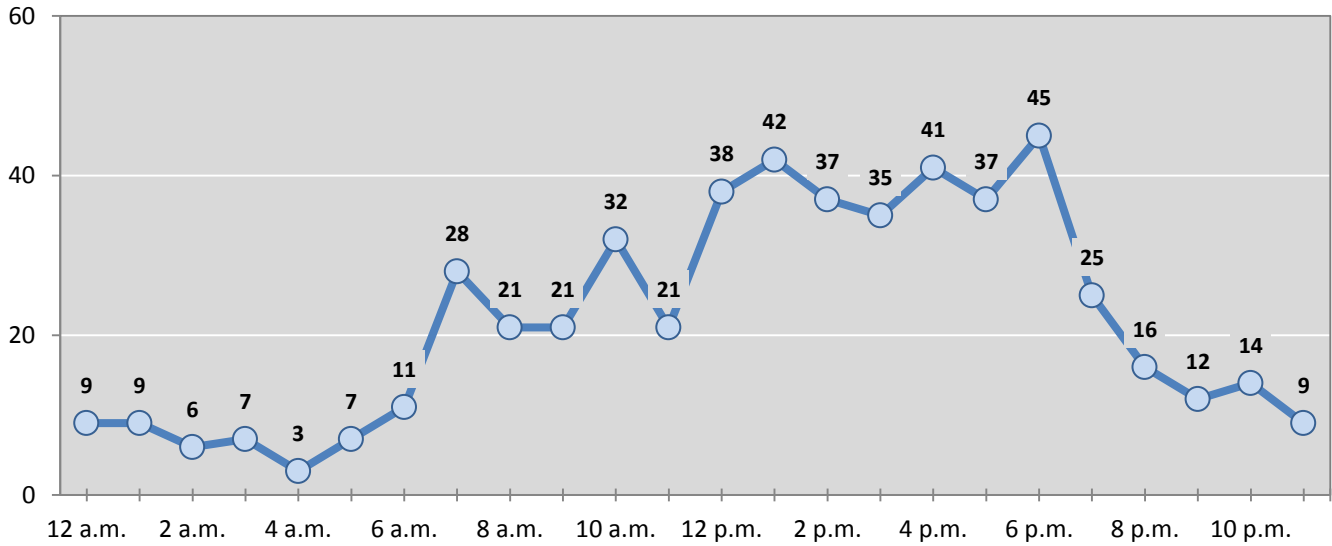
Table 2: Crashes by Month in San Miguel County, 2012-2016

Month	Crashes					5-Year Average
	2012	2013	2014	2015	2016	
January	37	32	35	49	51	41
February	38	31	28	49	51	39
March	33	24	42	56	42	39
April	53	26	39	35	33	37
May	43	32	44	31	43	39
June	51	29	40	40	43	41
July	34	39	42	47	52	43
August	35	38	37	39	38	37
September	37	45	37	60	48	45
October	43	39	46	44	45	43
November	31	31	55	54	29	40
December	49	27	46	66	60	50
Total Crashes	484	393	491	570	535	495

Table 3: Alcohol-involved Crashes by Month in San Miguel County, 2012-2016

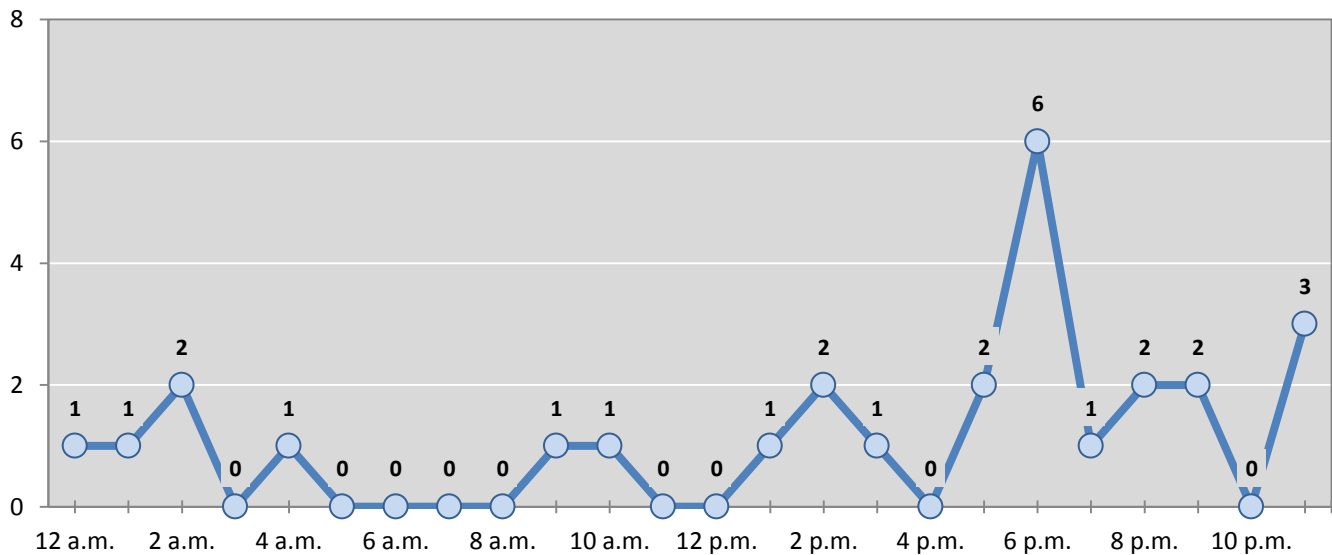
Month	Alcohol-involved Crashes					5-Year Average
	2012	2013	2014	2015	2016	
January	2	4	5	3	6	4
February	4	3	2	2	2	3
March	5	1	1	5	3	3
April	6	4	3	2	1	3
May	4	4	3	4	2	3
June	4	3	0	1	5	3
July	0	6	2	4	0	2
August	1	5	1	1	3	2
September	3	1	3	1	2	2
October	2	3	1	3	1	2
November	3	0	5	2	1	2
December	5	4	1	4	1	3
Total Crashes	39	38	27	32	27	33

Figure 2: Crashes by Hour in San Miguel County, 2016



* In 2016, San Miguel County had 9 crashes for which hour data were missing.

Figure 3: Alcohol-involved Crashes by Hour in San Miguel County, 2016



* In 2016, San Miguel County had 0 alcohol-involved crashes for which hour data were missing.

Table 4: Alcohol-involved Crashes by Day of Week in San Miguel County, 2012-2016

Day of Week	Alcohol-involved Crashes					5-Year Average
	2012	2013	2014	2015	2016	
Sunday	12	9	1	3	3	6
Monday	2	7	5	2	4	4
Tuesday	3	5	2	5	2	3
Wednesday	1	5	2	4	4	3
Thursday	3	3	6	4	3	4
Friday	12	4	5	7	7	7
Saturday	6	5	6	7	4	6
Total Crashes	39	38	27	32	27	33

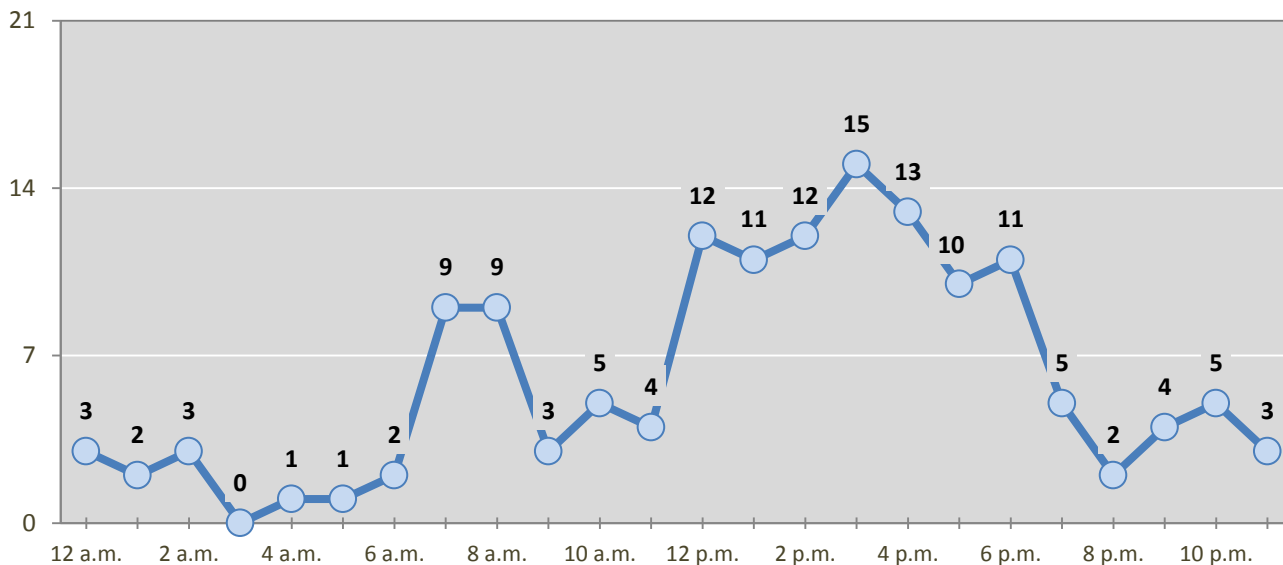
Table 5: Fatal and Injury Crashes by Day of Week in San Miguel County, 2012-2016

Day of Week	Fatal and Injury Crashes					5-Year Average
	2012	2013	2014	2015	2016	
Sunday	15	14	12	14	21	15
Monday	24	18	22	27	19	22
Tuesday	21	15	21	24	22	21
Wednesday	10	13	13	34	20	18
Thursday	18	17	13	19	23	18
Friday	20	19	26	23	20	22
Saturday	12	9	19	20	22	16
Total Crashes	120	105	126	161	147	132

Table 6: Pedestrian and Pedalcyclist Crashes by Day of Week in San Miguel County, 2012-2016

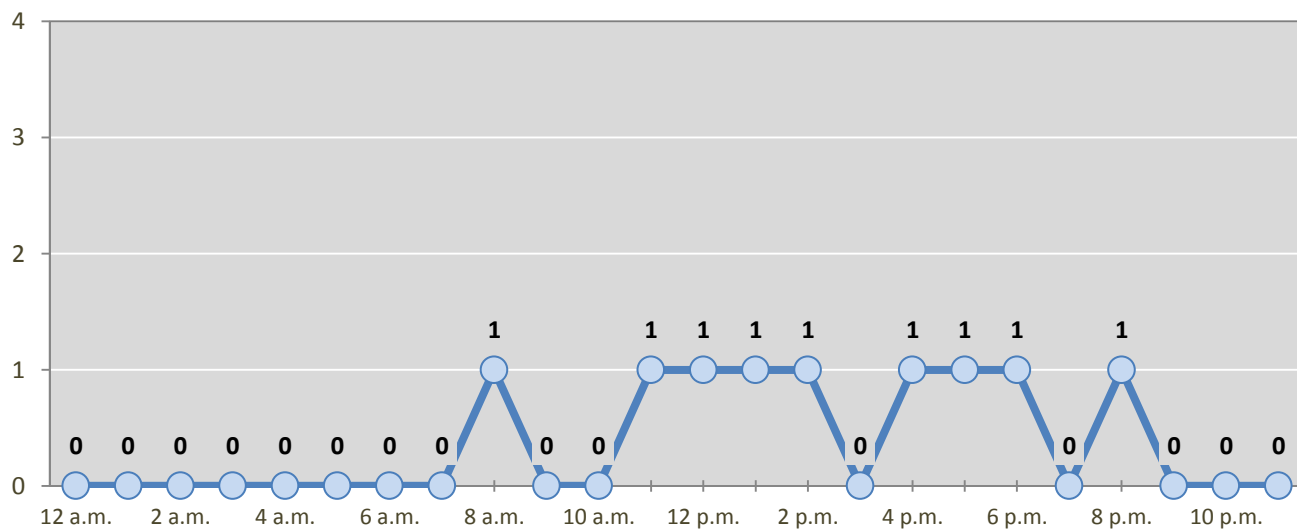
Day of Week	Pedestrian and Pedalcyclist Crashes					5-Year Average
	2012	2013	2014	2015	2016	
Sunday	0	1	1	0	2	1
Monday	2	2	0	2	0	1
Tuesday	3	1	0	1	0	1
Wednesday	1	3	2	0	2	2
Thursday	1	0	1	1	1	1
Friday	3	4	1	1	1	2
Saturday	1	0	1	1	3	1
Total Crashes	11	11	6	6	9	9

Figure 4: Fatal and Injury Crashes by Hour in San Miguel County, 2016



* In 2016, San Miguel County had 2 crashes for which hour data were missing.

Figure 5: Pedestrian and Pedalcyclist Crashes by Hour in San Miguel County, 2016



* In 2016, San Miguel County had 0 crashes for which hour data were missing.

Table 7: Severity of Injuries to People in Crashes by Rural and Urban Location in San Miguel County, 2016

Urban and Rural Locations by Alcohol-involvement	People in Crashes by Severity of Injuries					Total People
	Fatalities (Class K)	Suspected Serious Injuries (Class A)	Suspected Minor Injuries (Class B)	Possible Injuries (Class C)	No Apparent Injuries (Class O)	
People in Alcohol-involved Crashes	4	0	5	16	34	59
Urban	1	0	4	2	19	26
Rural Non-Interstate	1	0	1	9	5	16
Rural Interstate	2	0	0	5	10	17
People in Crashes	7	2	54	154	991	1,208
Urban	1	1	21	100	722	845
Rural Non-Interstate	1	1	13	20	113	148
Rural Interstate	5	0	20	34	156	215
Percent in Alcohol-involved Crashes	57%	0%	9%	10%	3%	5%

Table 8: Total Crashes by Roadway System and Crash Severity in San Miguel County, 2012-2016

Crash Severity by System	Crashes by Year					5-Year Average
	2012	2013	2014	2015	2016	
Total Rural Interstate	78	68	68	91	109	83
Fatal Crash	4	1	0	1	5	2
Injury Crash	32	26	28	32	31	30
Property Damage Only Crash	42	41	40	58	73	51
Total Rural Non-Interstate	71	74	126	89	79	88
Fatal Crash	1	4	3	1	1	2
Injury Crash	23	24	28	32	17	25
Property Damage Only Crash	47	46	95	56	61	61
Total Urban	335	251	297	390	347	324
Fatal Crash	3	0	0	2	1	1
Injury Crash	57	50	67	93	92	72
Property Damage Only Crash	275	201	230	295	254	251

Table 9: Total Crashes by Crash Classification in San Miguel County, 2012-2016

Crash Classification	Total Crashes by Year					5-Year Average
	2012	2013	2014	2015	2016	
Animal	32	26	53	34	47	38
Fixed Object	60	39	61	76	80	63
Other (Non-Collision)	9	7	8	6	4	7
Other (Object)	9	16	15	17	18	15
Other Vehicle	239	197	254	335	281	261
Overturn/Rollover	70	51	66	17	29	47
Parked Vehicle	42	32	15	27	23	28
Pedalcyclist	6	2	3	2	1	3
Pedestrian	7	8	3	5	8	6
Railroad Train	0	1	0	0	0	0
Rollover	0	0	0	32	13	9
Vehicle on Other Road	5	6	5	7	3	5
Missing Data	5	8	8	12	28	12
Total Crashes	484	393	491	570	535	495

Table 10: Vehicles in Crashes by Vehicle Type in San Miguel County, 2012-2016

Vehicle Type ¹	Vehicles in Crashes by Vehicle Type					5-Year Average
	2012	2013	2014	2015	2016	
Bus	1	3	7	1	3	3
Motorcycle	9	17	8	11	9	11
Passenger	381	290	332	425	414	368
Pedalcyclist	5	3	3	2	1	3
Pedestrian	7	9	3	4	9	6
Pickup	221	129	147	181	194	174
Semi	24	12	20	21	21	20
Van/SUV/4WD	108	94	147	150	164	133
Other Vehicle	13	36	32	71	16	34
Missing Data	36	60	109	116	73	79
Total Vehicles	805	653	808	982	904	830

¹ Pedestrians and pedalcyclists are counted as non-motorized vehicles, when involved in a crash with a motor vehicle. See Page 17 for data on drivers of non-motorized vehicles in crashes (i.e. pedestrians and pedalcyclists).

Table 11: Motor Vehicle Drivers in Crashes by Vehicle Type and Age Group in San Miguel County, 2016

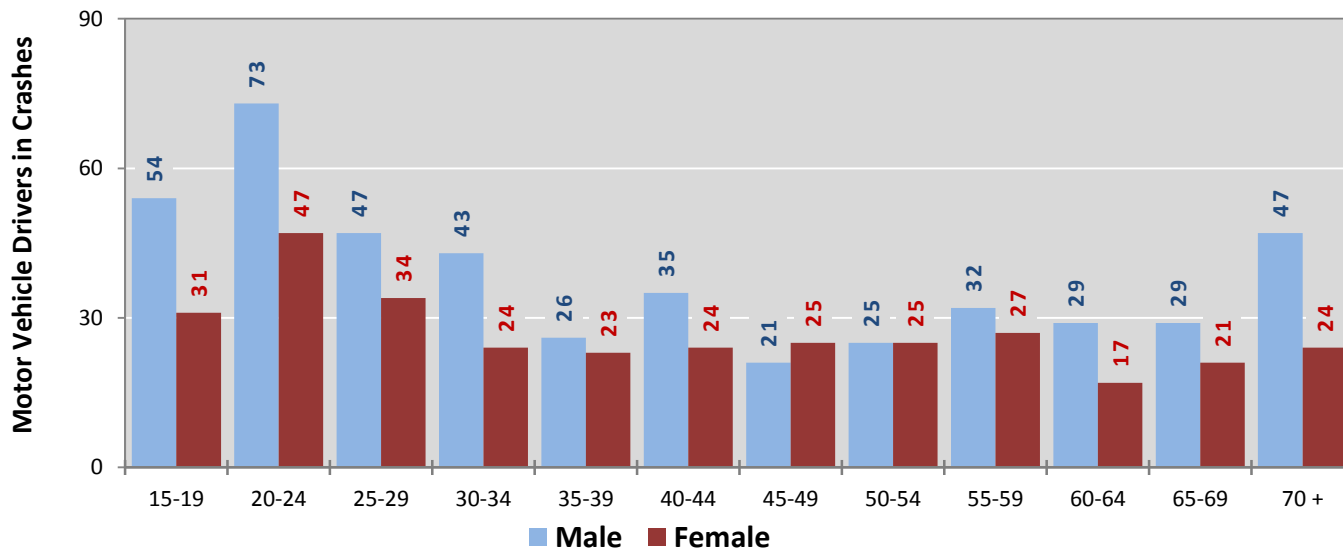
Age Groups	Motor Vehicle ¹ Drivers by Vehicle Type and Age Group								Total Drivers
	Bus	Motor-cycle	Passenger	Pickup	Semi	Van 4WD SUV	Other Vehicle	Missing Data	
15-19	0	1	42	18	1	11	5	7	85
20-24	0	0	73	25	1	13	1	8	121
25-29	0	2	44	16	0	17	1	1	81
30-34	0	2	39	13	2	11	0	1	68
35-39	0	0	23	7	1	17	0	2	50
40-44	1	1	21	16	5	13	1	2	60
45-49	1	0	21	10	1	6	2	5	46
50-54	0	0	16	13	3	14	2	2	50
55-59	0	1	24	14	4	13	0	3	59
60-64	0	2	23	11	1	7	1	1	46
65-69	1	0	20	13	0	13	0	3	50
70 +	0	0	28	21	0	14	3	5	71
Missing Data	0	0	40	17	2	15	0	33	107
Total Drivers	3	9	414	194	21	164	16	73	894

Table 12: Alcohol-involved Motor Vehicle Drivers in Crashes by Vehicle Type and Age Group in San Miguel County, 2016

Age Groups	Alcohol-involved Motor Vehicle ¹ Drivers by Vehicle Type and Age Group								Total Drivers
	Bus	Motor-cycle	Passenger	Pickup	Semi	Van 4WD SUV	Other Vehicle	Missing Data	
15-19	0	0	0	0	0	0	0	0	0
20-24	0	0	3	0	0	0	0	0	3
25-29	0	0	3	2	0	0	0	0	5
30-34	0	1	3	0	0	0	0	0	4
35-39	0	0	0	0	0	0	0	0	0
40-44	0	0	0	2	0	0	0	0	2
45-49	0	0	0	0	0	0	0	0	0
50-54	0	0	2	2	0	1	0	0	5
55-59	0	0	0	1	0	2	0	0	3
60-64	0	0	0	0	0	0	0	0	0
65-69	0	0	0	2	0	1	0	0	3
70 +	0	0	0	0	0	0	0	1	1
Missing Data	0	0	0	0	0	0	0	0	0
Total Drivers	0	1	11	9	0	4	0	1	26

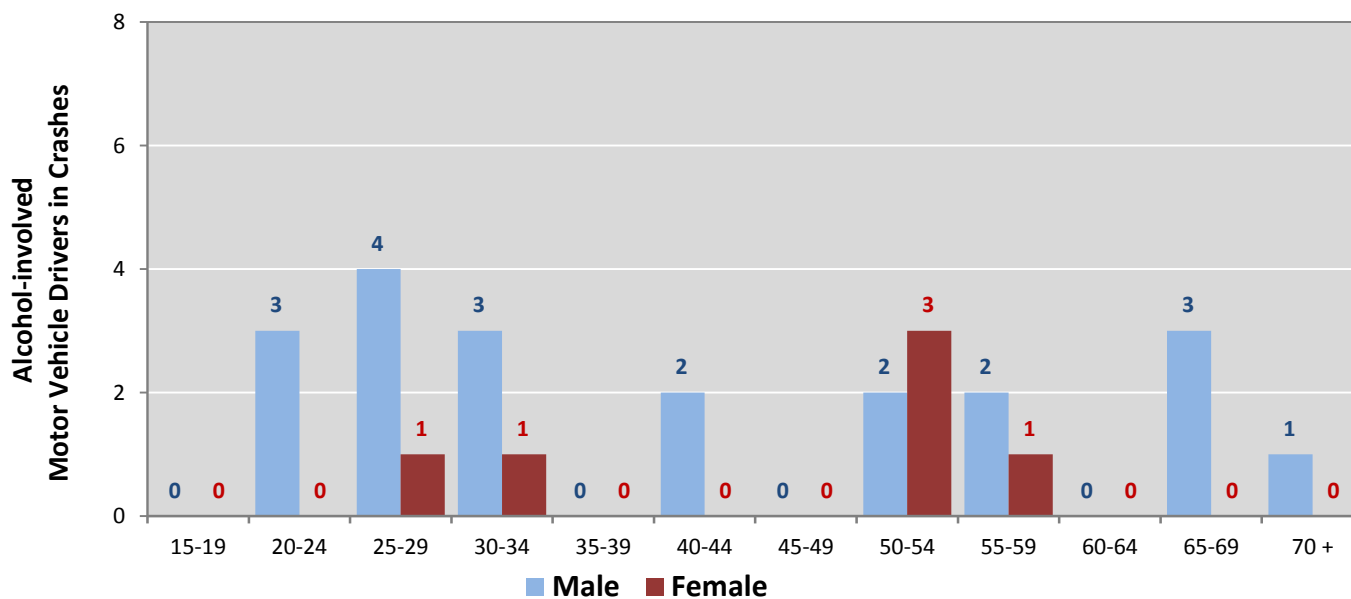
¹ See Page 17 for data on drivers of non-motorized vehicles in crashes (i.e. pedestrians and pedalcyclists).

Figure 6: Motor Vehicle Drivers in Crashes by Age Group and Sex in San Miguel County, 2016



* In 2016, San Miguel County had 111 drivers in crashes for which age or sex data were missing.

Figure 7: Alcohol-involved Motor Vehicle Drivers in Crashes by Age Group and Sex in San Miguel County, 2016



* In 2016, San Miguel County had 0 drivers in crashes for which age or sex data were missing.

Table 13: Alcohol-involved Motor Vehicle Drivers Under 21 (Ages 15-20) in Crashes in San Miguel County, 2012-2016

Age ¹	Year					5-Year Total
	2012	2013	2014	2015	2016	
15	0	0	0	0	0	0
16	0	0	0	0	0	0
17	4	1	1	0	0	6
18	0	0	0	0	0	0
19	2	0	0	3	0	5
20	0	3	0	2	1	6
Total Drivers	6	4	1	5	1	17

Table 14: Motor Vehicle Drivers Under 21 (Ages 15-20) in Crashes by Age, Sex and Alcohol-involvement in San Miguel County, 2016

Age ¹	Total Drivers				Alcohol-involved Drivers			
	Sex		Total Drivers	Percent of Total	Sex		Total Drivers	Percent of Total
	Male	Female			Male	Female		
15	5	2	7	6%	0	0	0	0%
16	7	3	10	9%	0	0	0	0%
17	15	7	22	20%	0	0	0	0%
18	16	10	26	24%	0	0	0	0%
19	11	9	20	18%	0	0	0	0%
20	18	7	25	23%	1	0	1	100%
Total Drivers	72	38	110	100%	1	0	1	100%

¹ For analysis of drivers under age 21, when the driver age or sex are not identified on the crash report (typically hit-and-run drivers), the driver data are considered unreliable and are excluded from the analysis.

**Table 15: Frequency of Contributing Factors in Crashes
by Crash Severity in San Miguel County, 2016**

Contributing Factors	Frequency of Contributing Factor ¹ by Crash Severity			
	Frequency in Fatal Crashes	Frequency in Injury Crashes	Frequency in Property Damage Only Crashes	Frequency in All Crashes
Human	15	205	495	715
Driver Inattention	2	72	177	251
Failed to Yield Right of Way	0	26	46	72
Following Too Closely	0	15	44	59
Other Improper Driving	2	17	32	51
Speed Too Fast for Conditions	0	15	30	45
Excessive Speed	2	13	26	41
Alcohol Involved	4	8	15	27
Avoid No Contact - Vehicle	1	4	19	24
Improper Backing	0	3	21	24
Made Improper Turn	0	6	17	23
Improper Overtaking	1	1	16	18
Drove Left Of Center	1	4	11	16
Passed Stop Sign	0	4	11	15
Avoid No Contact - Other	1	7	4	12
Improper Lane Change	0	3	7	10
Drug Involved	0	2	6	8
Disregarded Traffic Signal	0	1	6	7
Pedestrian Error	1	3	0	4
Vehicle Skidded Before Brake	0	0	4	4
Failed to Yield to Police Vehicle	0	1	1	2
Cell Phone	0	0	1	1
Driverless Moving Vehicle	0	0	1	1
Failed to Yield to Emergency Vehicle	0	0	0	0
High Speed Pursuit	0	0	0	0
Texting	0	0	0	0
Vehicle	0	2	13	15
Inadequate Brakes	0	1	4	5
Defective Tires	0	0	4	4
Defective Steering	0	0	3	3
Other Mechanical Defect	0	1	2	3
Environment	0	3	2	5
Road Defect	0	2	2	4
Traffic Control Not Functioning	0	1	0	1
Low Visibility Due to Smoke	0	0	0	0
Other	5	108	291	404
None	4	61	184	249
Other - No Driver Error	1	47	107	155

¹ Multiple contributing factors may be reported for any vehicle in a crash.

Table 16: People in Crashes by Crash Classification and Severity of Injuries in San Miguel County, 2016

Crash Classification	People in Crashes by Severity of Injuries					Total People
	Fatalities (Class K)	Suspected Serious Injuries (Class A)	Suspected Minor Injuries (Class B)	Possible Injuries (Class C)	No Apparent Injuries (Class O)	
Animal	0	0	4	4	65	73
Fixed Object	0	1	13	13	80	107
Other (Non-Collision)	0	0	1	0	3	4
Other (Object)	0	0	0	0	28	28
Other Vehicle	2	0	14	101	644	761
Overturn/Rollover	1	0	11	11	30	53
Parked Vehicle	0	0	0	2	49	51
Pedalcyclist	0	0	0	1	1	2
Pedestrian	1	0	1	7	15	24
Railroad Train	0	0	0	0	0	0
Rollover	3	1	5	5	5	19
Vehicle on Other Road	0	0	4	0	7	11
Missing Data	0	0	1	10	64	75
Total People	7	2	54	154	991	1,208

Table 17: Killed or Injured Unbelted People in Crashes by Sex and Age Group in San Miguel County, 2016

Age Groups	Unbelted People Killed or Injured ^{1,2}				Total People
	Male	Percent of Male	Female	Percent of Female	
0-4	1	25%	0	0%	1
5-9	0	0%	1	33%	1
10-14	0	0%	0	0%	0
15-19	0	0%	0	0%	0
20-24	2	50%	0	0%	2
25-29	0	0%	1	33%	1
30-34	1	25%	0	0%	1
35-39	0	0%	1	33%	1
40-44	0	0%	0	0%	0
45-49	0	0%	0	0%	0
50-54	0	0%	0	0%	0
55-59	0	0%	0	0%	0
60-64	0	0%	0	0%	0
65-69	0	0%	0	0%	0
70 +	0	0%	0	0%	0
Missing Data	0	0%	0	0%	0
Total People	4	100%	3	100%	7

¹ People injured are in one of three categories: suspected serious injury, suspected minor injury, or possible injury.

² Excludes people in or on buses, heavy trucks, motorcycles, or ATVs.

Figure 8: Seatbelt Use by People in Crashes with Fatal or Suspected Serious Injuries in San Miguel County, 2012-2016

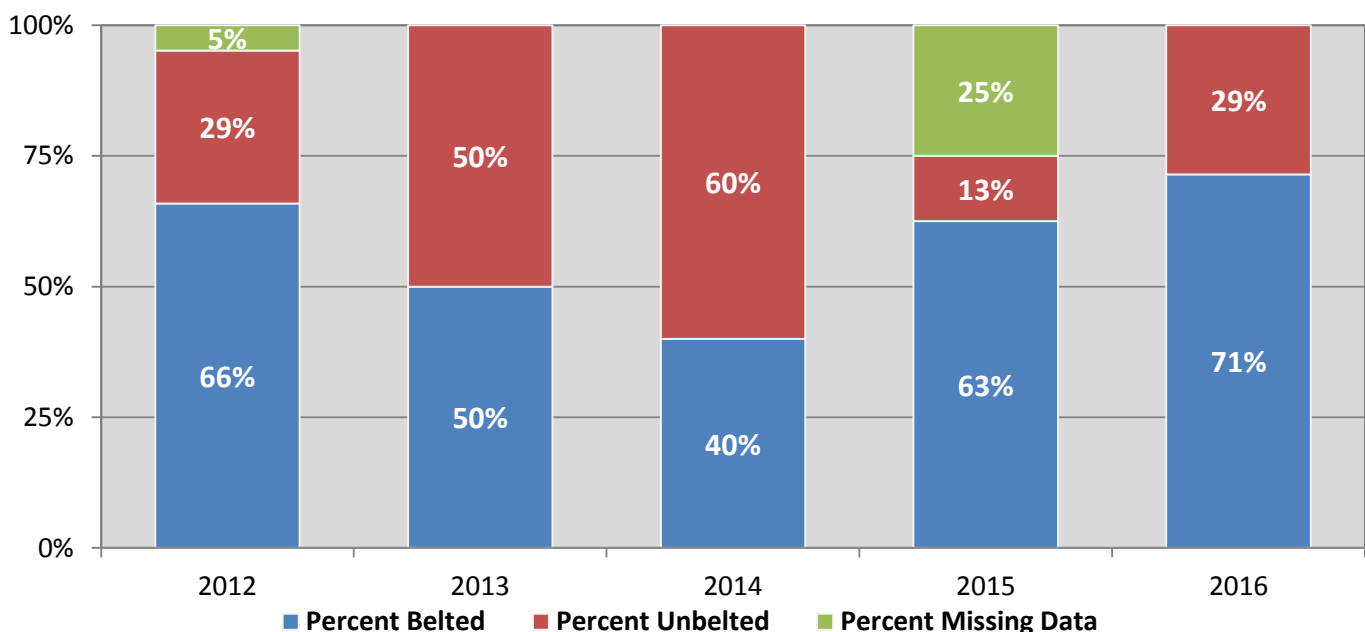
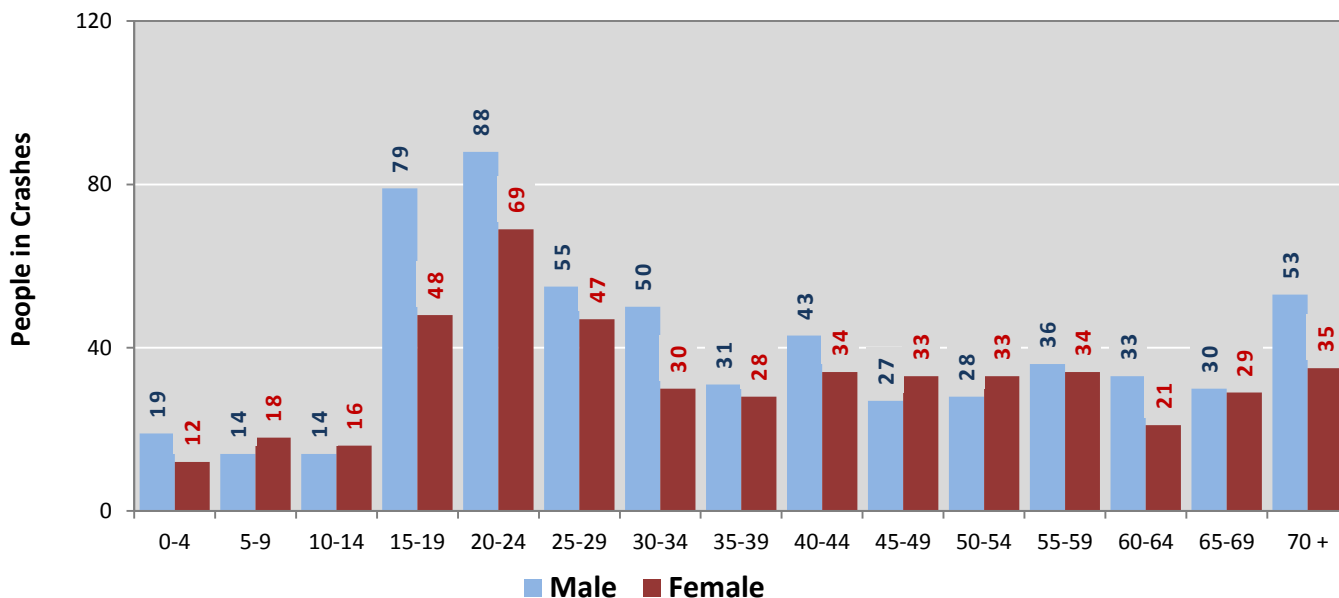
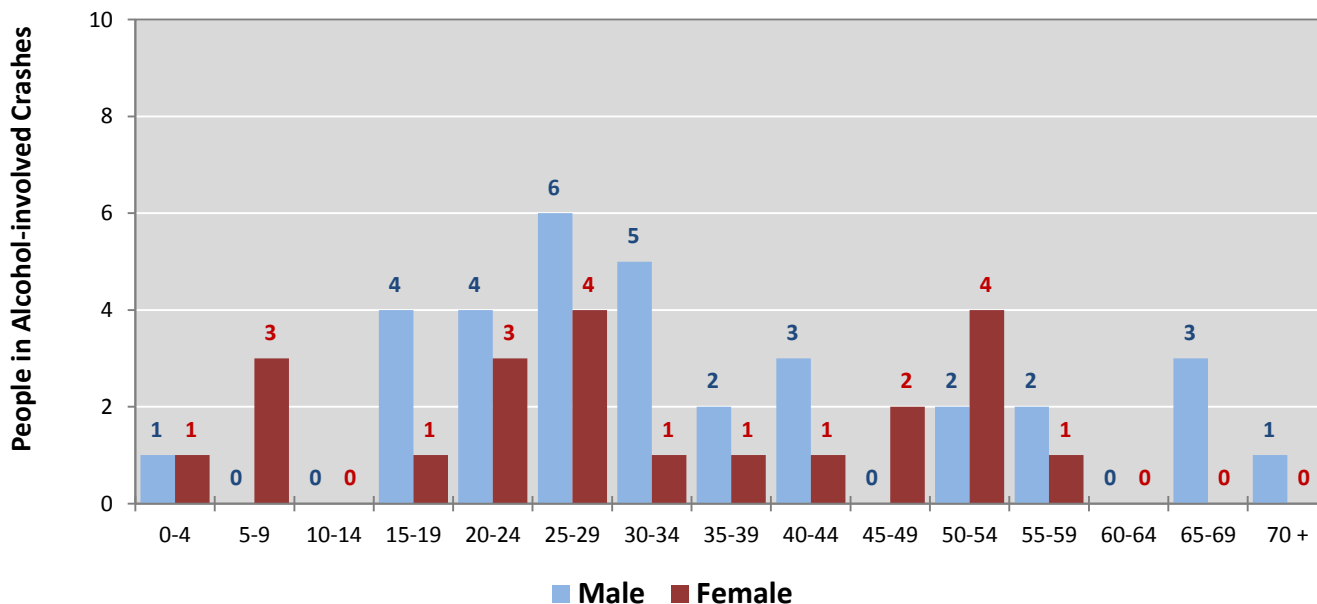


Figure 9: People in Crashes by Age Group and Sex in San Miguel County, 2016



* In 2016, San Miguel County had 121 people in crashes for which age or sex data were missing.

Figure 10: People in Alcohol-involved Crashes by Age Group and Sex in San Miguel County, 2016



* In 2016, San Miguel County had 4 people in alcohol-involved crashes for which age or sex data were missing.

Table 18: Pedestrians and Pedalcyclists in Crashes by Age Group in San Miguel County, 2012-2016

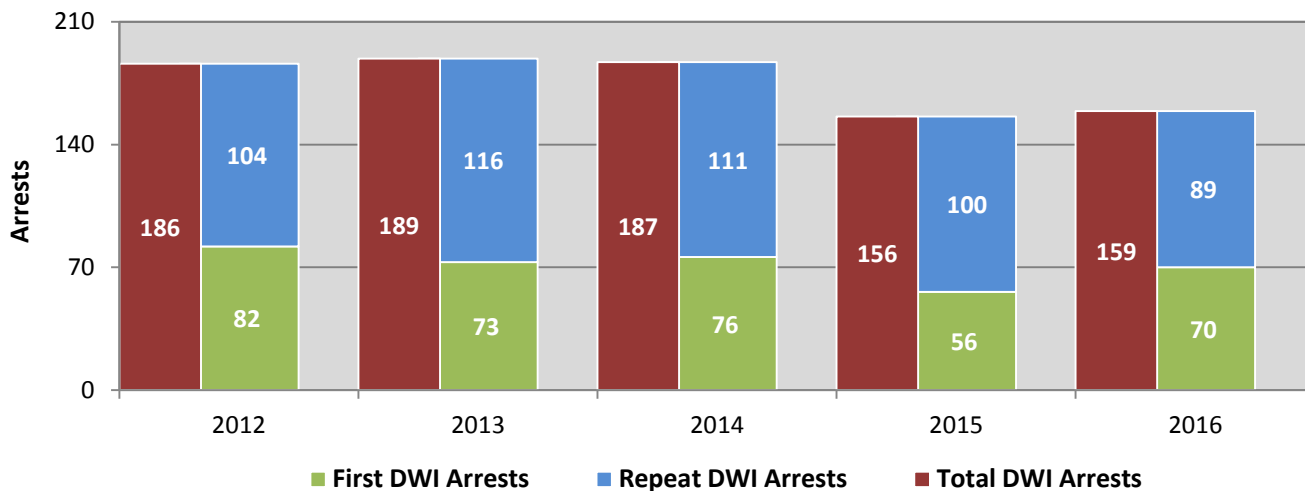
Age Groups	Pedestrians and Pedalcyclists ¹ in Crashes					5-Year Total People
	2012	2013	2014	2015	2016	
0-4	1	0	0	0	0	1
5-9	0	2	1	1	1	5
10-14	2	2	2	0	1	7
15-19	4	0	1	0	1	6
20-24	3	0	0	0	1	4
25-29	1	1	0	0	1	3
30-34	0	0	0	1	2	3
35-39	0	1	0	0	0	1
40-44	0	0	0	0	0	0
45-49	0	0	1	1	0	2
50-54	0	0	0	1	0	1
55-59	1	0	0	1	1	3
60-64	0	1	0	0	1	2
65-69	0	1	0	0	0	1
70 +	0	0	1	1	1	3
Missing Data	0	4	0	0	0	4
Total People	12	12	6	6	10	46

Table 19: Pedestrians and Pedalcyclists in Crashes by Alcohol Involvement and Severity of Injuries in San Miguel County, 2016

Alcohol Involvement	Pedestrians and Pedalcyclists ¹ in Crashes					Total People
	Fatalities (Class K)	Suspected Serious Injuries (Class A)	Suspected Minor Injuries (Class B)	Possible Injuries (Class C)	No Apparent Injury (Class O)	
Total Pedalcyclists	0	0	0	1	0	1
Involved	0	0	0	0	0	0
Not Involved	0	0	0	1	0	1
Total Pedestrians	1	0	1	6	1	9
Involved	1	0	0	0	0	1
Not Involved	0	0	1	6	1	8
Total People	1	0	1	7	1	10

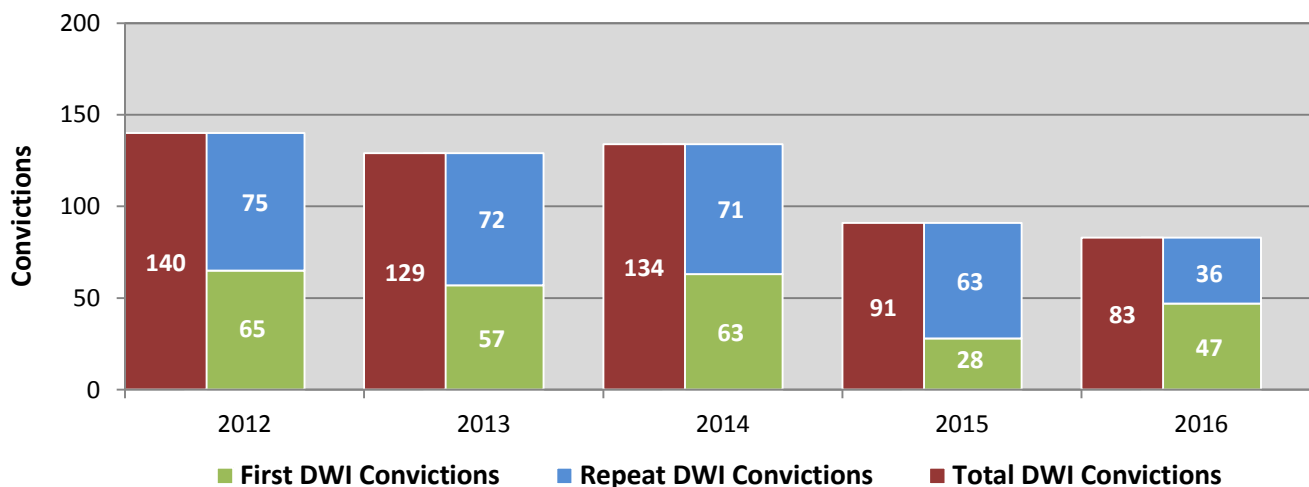
¹ Pedestrians and pedalcyclists are counted as non-motorized vehicles, when involved in a crash with a motor vehicle.

**Figure 11: DWI Arrests in San Miguel County,
Showing First and Repeat DWI Arrests, 2012-2016**



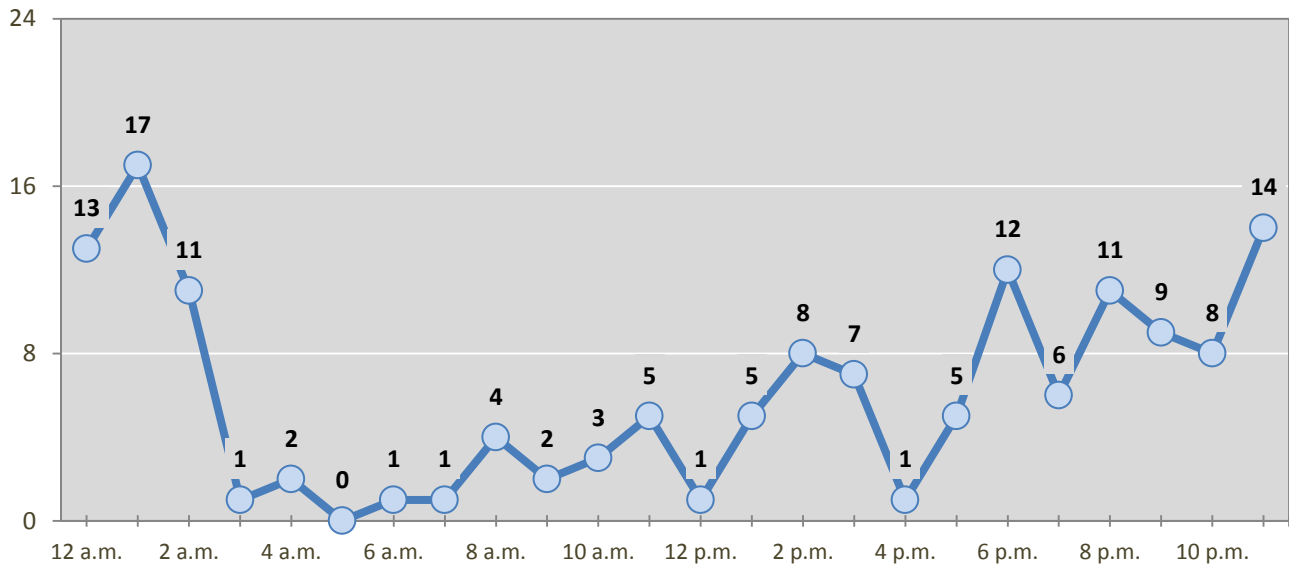
*Values are based upon the year of the arrest.

**Figure 12: DWI Convictions in San Miguel County,
Showing First and Repeat DWI Convictions, 2012-2016**



*Values are based upon the year of the conviction.

Figure 13: DWI Arrests by Hour in San Miguel County, 2016



* In 2016, San Miguel County had 12 arrests for which hour data were missing.

Table 20: DWI Arrests by Day of Week in San Miguel County, 2012-2016

Day of Week	Year					5-Year Average
	2012	2013	2014	2015	2016	
Sunday	35	34	24	22	30	29
Monday	17	19	23	19	16	19
Tuesday	22	24	14	20	9	18
Wednesday	17	14	20	15	19	17
Thursday	14	23	29	16	18	20
Friday	32	28	28	27	28	29
Saturday	49	47	49	37	39	44
Total Arrests	186	189	187	156	159	175

Table 21: Driver First DWI Arrests by Age Group in San Miguel County, 2012-2016

Age Groups	Driver First DWI Arrests ¹				
	2012	2013	2014	2015	2016
15-19	12	7	7	5	7
20-24	24	22	19	13	17
25-29	16	7	11	10	14
30-34	6	6	7	7	7
35-39	4	5	5	3	5
40-44	7	7	10	4	2
45-49	5	7	6	3	3
50-54	6	7	5	2	7
55-59	1	1	2	5	3
60-64	0	1	2	1	2
65-69	0	2	1	1	1
70 +	1	0	0	1	1
Missing Data	0	1	1	1	1
Total Drivers	82	73	76	56	70

¹ Values are based upon the year of the arrest.

Table 22: Driver Repeat DWI Arrests by Age Group in San Miguel County, 2012-2016

Age Groups	Driver Repeat DWI Arrests ¹				
	2012	2013	2014	2015	2016
15-19	0	0	0	2	0
20-24	7	9	8	10	4
25-29	10	13	19	8	14
30-34	15	15	14	18	8
35-39	12	15	16	10	9
40-44	12	15	12	12	8
45-49	16	18	9	11	16
50-54	20	13	13	9	8
55-59	7	10	9	9	11
60-64	3	2	5	5	3
65-69	2	6	6	3	4
70 +	0	0	0	3	4
Missing Data	0	0	0	0	0
Total Drivers	104	116	111	100	89

¹ Values are based upon the year of the arrest.

Table 23: Driver First DWI Convictions by Age Group in San Miguel County, 2012-2016

Age Groups	Driver First DWI Convictions ¹				
	2012	2013	2014	2015	2016
15-19	8	7	1	2	3
20-24	14	20	19	7	9
25-29	14	7	7	5	10
30-34	3	4	9	2	5
35-39	4	3	4	1	5
40-44	4	4	8	3	3
45-49	6	3	6	2	3
50-54	7	5	5	1	3
55-59	3	1	1	4	3
60-64	1	0	2	0	1
65-69	0	1	1	0	0
70 +	0	1	0	0	2
Missing Data	1	1	0	1	0
Total Drivers	65	57	63	28	47

¹ Values are based upon the year of the conviction.

Table 24: Driver Repeat DWI Convictions by Age Group in San Miguel County, 2012-2016

Age Groups	Driver Repeat DWI Convictions ¹				
	2012	2013	2014	2015	2016
15-19	0	0	0	1	0
20-24	3	5	6	5	3
25-29	9	6	15	6	6
30-34	10	8	11	13	1
35-39	6	10	7	6	2
40-44	13	6	7	10	2
45-49	13	12	6	9	8
50-54	11	12	8	5	4
55-59	7	6	4	3	6
60-64	3	3	3	4	3
65-69	0	4	4	1	1
70 +	0	0	0	0	0
Missing Data	0	0	0	0	0
Total Drivers	75	72	71	63	36

¹ Values are based upon the year of the conviction.

Table 25: Court Disposition of DWI Arrests for San Miguel County and the State, 2016

Court Disposition of DWI Arrest ¹	San Miguel County	Statewide	Percent of Statewide
Total DWI Arrests	159	10,344	1.5%
DWI Arrests Resulting in Convictions	81	5,541	1.5%
DWI Arrests Resulting in Dismissals ²	3	1,512	0.2%
DWI Arrests Awaiting Disposition	75	3,291	2.3%

¹ These are the number of DWI arrests in 2016 and whether the case resulted in a conviction or dismissal, or is still awaiting court disposition, as reported in the NM MVD Citation Tracking System (CTS) as of December 2017.

² For this table, a very small number of "not guilty" rulings may be included in the category Dismissals.

Table 26: Average Number of Days from Date of DWI Arrest to Date of Court Disposition in San Miguel County and the State, 2016

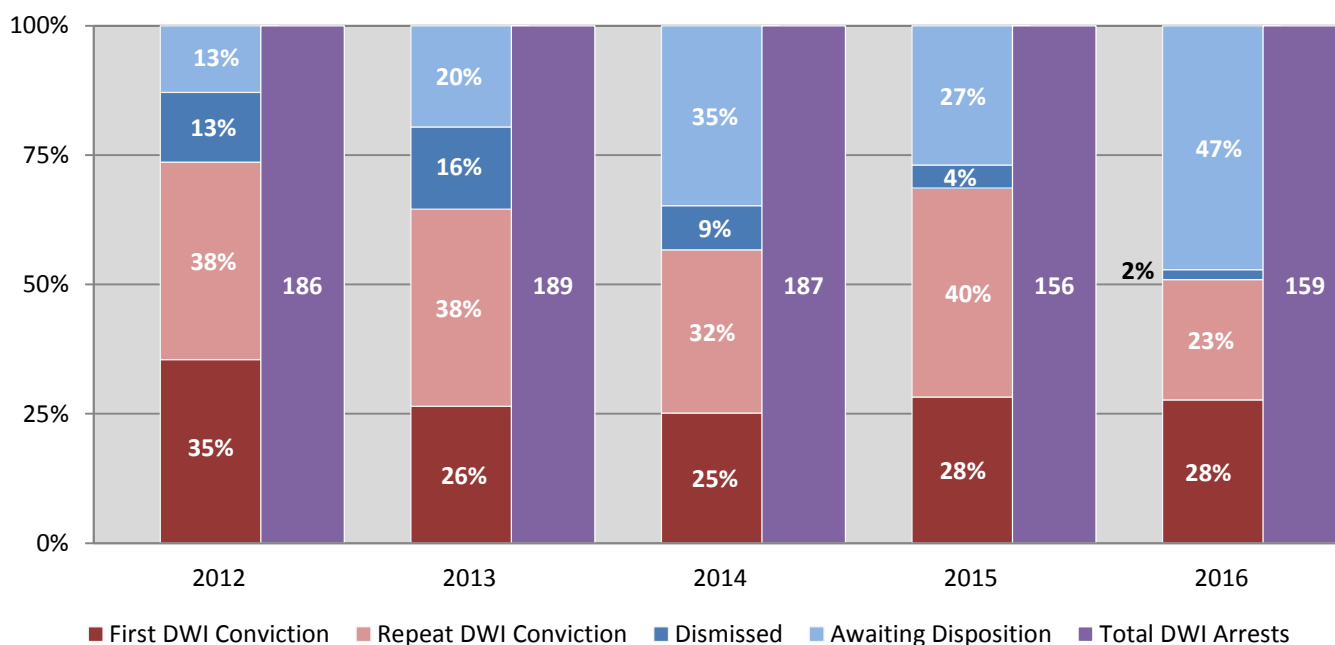
Court Disposition	Average Number of Days		Deviation from Statewide Average
	San Miguel County	Statewide	
DWI Conviction	152	157	-5
DWI Dismissal	205	179	26

Table 27: Court Disposition of DWI Arrests in San Miguel County, 2012-2016

Year of DWI Arrest ¹	Court Disposition				Total DWI Arrests
	First DWI Conviction	Repeat DWI Conviction	Dismissed	Awaiting Disposition	
2012	66	71	25	24	186
2013	50	72	30	37	189
2014	47	59	16	65	187
2015	44	63	7	42	156
2016	44	37	3	75	159

¹ Values are based upon the year of the arrest.

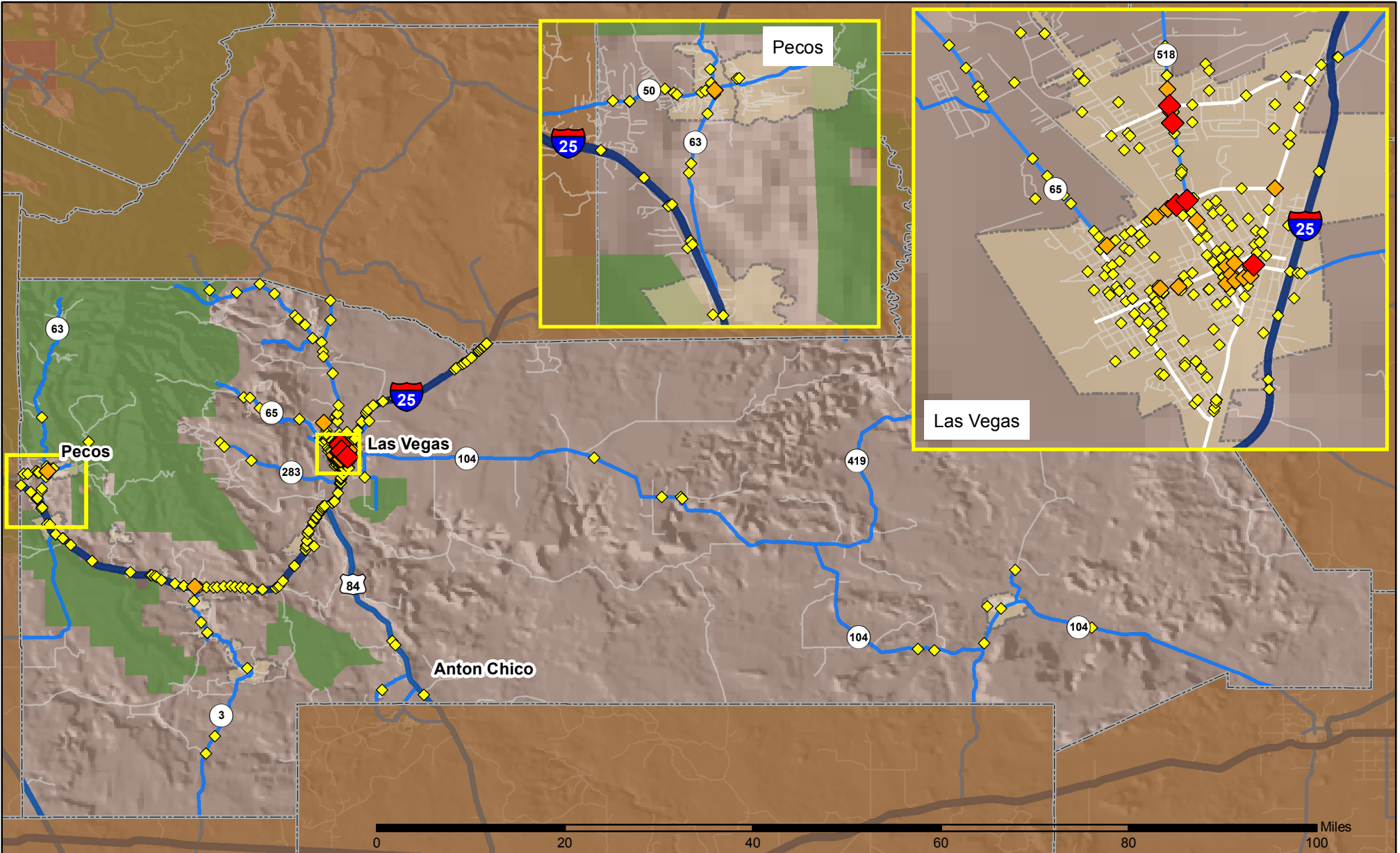
Figure 14: Court Dispositions by Percentage of DWI Arrests in San Miguel County, 2012-2016



*Table 27 contains the values used to calculate percentages shown in Figure 14.

Crashes in San Miguel County, New Mexico, 2016

Map created by the Traffic Research Unit, Geospatial & Population Studies at UNM



Legend

Data Source: NMDOT Crash File 2016
<http://tru.unm.edu> CO#5801 tru@unm.edu

- Forest & Wildlife Areas
- Reservations & Pueblos
- County Boundaries
- City Boundaries

- Interstate Highways
- U.S. Highways
- State Highways
- Streets & Roadways

Crashes 2016

- 1 - 2 Crashes
- 3 - 6 Crashes
- 7 - 14 Crashes