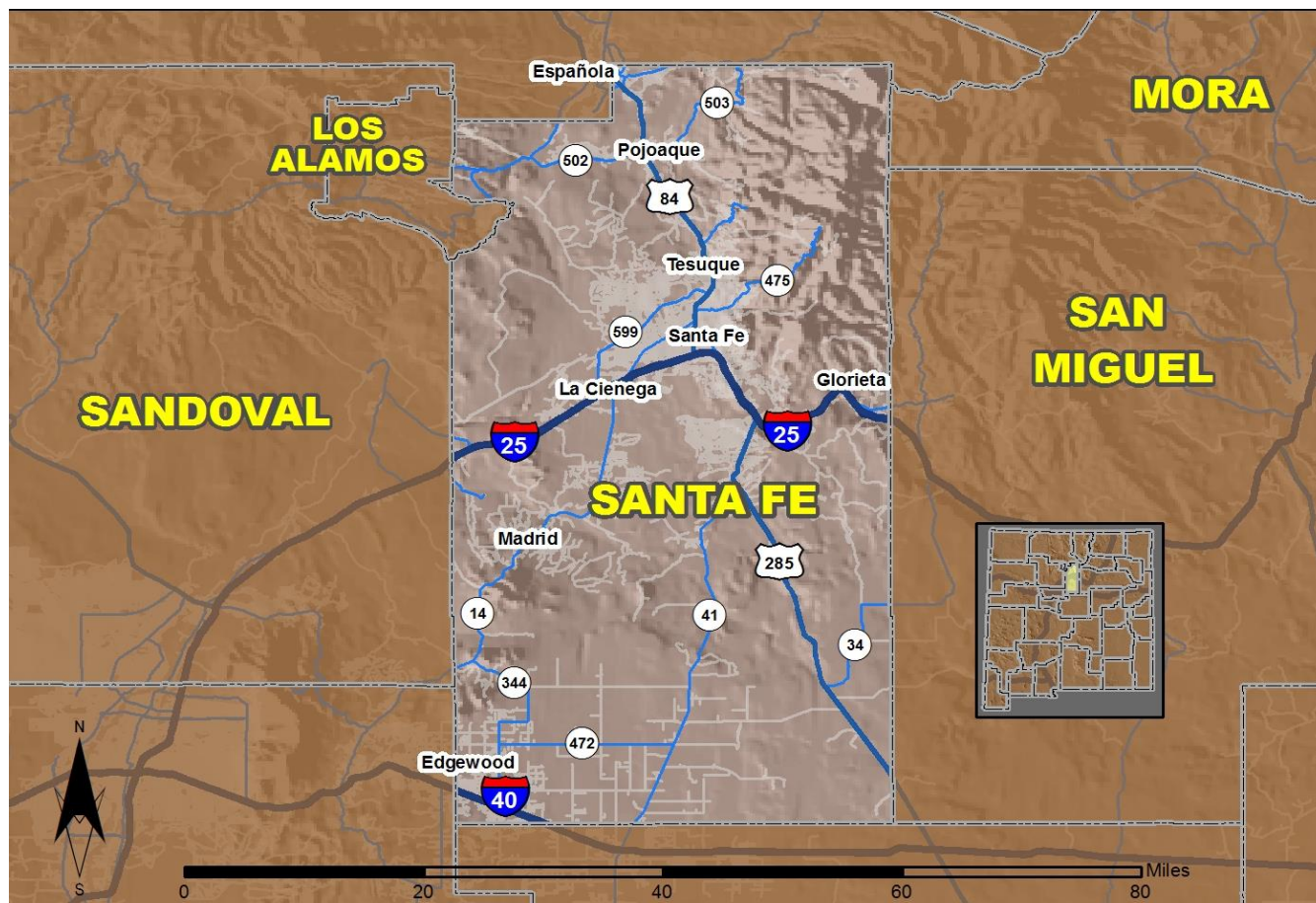


# 2016 Community Report

## Santa Fe County



Produced for the New Mexico Department of Transportation,  
Traffic Safety Division, Traffic Records Bureau,  
Under Contract 5801 by the University of New Mexico,  
Geospatial and Population Studies, Traffic Research Unit

Distributed in compliance with New Mexico Statute 66-7-214  
as a reference source regarding New Mexico traffic crashes

For the purposes of this report, data are compiled by the University of New Mexico, Geospatial and Population Studies, Traffic Research Unit (TRU), on behalf of the New Mexico Department of Transportation (NMDOT). Data in this report may differ from that in other data sources, such as the Federal Fatality Analysis Reporting System (FARS), due to the timing of publications and rules for how data are compiled and maintained in Federal vs. State databases. If you have questions regarding this report, please contact the Traffic Safety Division at 505-827-0427.

<http://tru.unm.edu/Crash-Reports/Community-Reports/>

## Definitions

---

**Aggravated DWI** – A driver arrested for 1) driving with a BAC of 0.16 or higher, 2) driving under the influence of alcohol or drugs and causing bodily injury to a human being as a result, or 3) driving under the influence of alcohol or drugs and refusing to submit to a BAC test at the time of arrest for DWI.

**Alcohol-involved Crash** – A crash for which the Uniform Crash Report indicated that 1) a DWI citation was issued, 2) alcohol was a contributing factor, or 3) a person in control of a vehicle (including a pedestrian or pedalcyclist) was suspected of being under the influence of alcohol.

**Alcohol-involved Driver** – A person in control of a vehicle who was cited for DWI or indicated on the Uniform Crash Report as being either suspected or determined by testing to be under the influence of alcohol. There can be multiple alcohol-involved drivers in a single alcohol-involved crash.

**Crash** – A reported incident on a public roadway involving one or more motor vehicles that resulted in death, personal injury, or at least \$500 in property damage. Crashes on private property (such as a parking lot) are not included.

**DWI Arrest (Citation)** – In this report, a DWI arrest (a.k.a. a DWI citation) is a driver arrested for either DWI or aggravated DWI. New Mexico’s legal limit for presumption of driving while intoxicated (DWI) is 0.08 for non-commercial drivers older than 21 years of age, 0.04 for commercial vehicle drivers, and 0.02 for drivers younger than 21 years of age.

**DWI Conviction** – A driver convicted of driving under the intoxicating influence of alcohol, narcotics, or pathogenic drugs, including aggravated DWI.

**Fatal Crash** – A crash in which at least one person was killed. More than one person can be killed in a single fatal crash.

**Fatalities** – The number of people killed in a crash. The terms “killed” and “deaths” are synonymous with “fatalities.” A fatality is crash-related if it occurs at the time of the crash or if the person(s) involved in the crash dies within 30 days.

**Injury Crash** – A reported crash in which at least one person was injured. Injury crashes involve at least one suspected serious injury (Class A), suspected minor injury (Class B), or possible injury (Class C). Fatal crashes are not included.

**Missing Data** – An indication that the applicable field on the UCR form was left blank or contained an invalid code. Starting with crashes that occurred in 2012, improvements in the identification of missing data in the NMDOT crash database led to an increase in the reported amount of missing data.

**Pedalcyclist** – A person riding a mechanism of transport that is powered solely by pedals (a.k.a. bicyclist).

**Pedestrian** – A person on foot, walking, running, jogging, hiking, sitting or lying down who is involved in a motor vehicle traffic crash.

## Sources

---

**Crash Data** – New Mexico Department of Transportation, Traffic Safety Division, Traffic Records Bureau, Traffic Crash Database, as of the report date below. Crash data are compiled using NMDOT Uniform Crash Reports (UCR), submitted by law enforcement agencies in the state, for any incident on a public roadway involving one or more motor vehicles that resulted in death, injury, or at least \$500 in property damage. These reports are processed by the NMDOT Traffic Records Bureau and analyzed by the University of New Mexico, Geospatial and Population Studies, Traffic Research Unit (TRU).

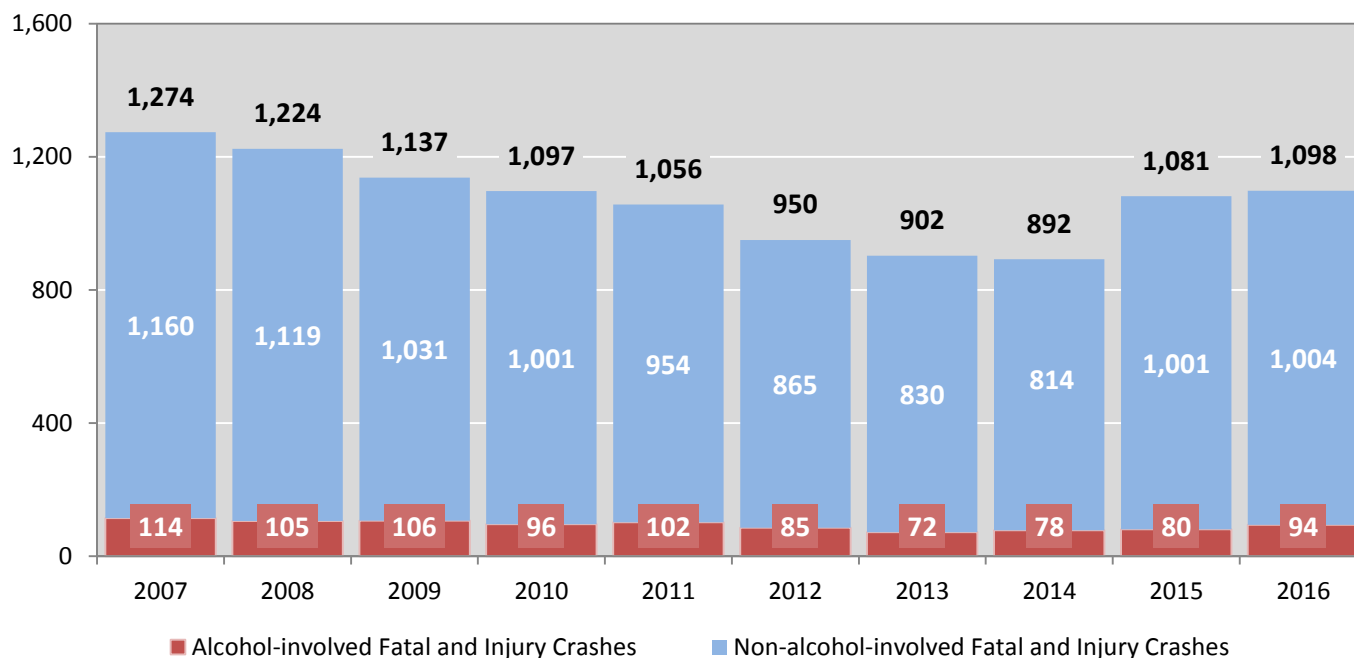
**DWI Citation Tracking System (CTS)** – New Mexico Taxation and Revenue Department (NM TRD), Motor Vehicle Division (MVD), DWI Citation Tracking System (CTS), as of December 2017. Repeat offenders are identified by the combination of account key, arrest date, and citation number. County data are based upon the county where the arrest took place. City data are based upon the city where the offender resides.

**Urban Areas** – New Mexico Department of Transportation, Asset Management and Planning, 2010 U.S. Census Urbanized Area Boundaries, NMDOT-Adjusted, and U.S. Census Urban Clusters, August 21, 2013. In crashes before 2013, “urban” was defined as a town or city with a population of at least 2,500 people.

**Table 1: Total Crashes and Alcohol-involved Crashes by Crash Severity in Santa Fe County, 2007-2016**

Year	Total Crashes				Alcohol-involved Crashes			
	Fatal	Injury	Property Damage Only	Total	Fatal	Injury	Property Damage Only	Total
2007	18	1,256	2,652	<b>3,926</b>	10	104	114	<b>228</b>
2008	14	1,210	2,539	<b>3,763</b>	6	99	128	<b>233</b>
2009	20	1,117	2,374	<b>3,511</b>	7	99	102	<b>208</b>
2010	22	1,075	2,222	<b>3,319</b>	17	79	96	<b>192</b>
2011	18	1,038	2,227	<b>3,283</b>	8	94	112	<b>214</b>
2012	18	932	2,029	<b>2,979</b>	7	78	87	<b>172</b>
2013	8	894	1,865	<b>2,767</b>	6	66	83	<b>155</b>
2014	17	875	1,933	<b>2,825</b>	7	71	94	<b>172</b>
2015	13	1,068	2,118	<b>3,199</b>	3	77	81	<b>161</b>
2016	20	1,078	2,074	<b>3,172</b>	8	86	85	<b>179</b>

**Figure 1: Alcohol-involved Fatal and Injury Crashes Compared to Non-alcohol-involved Fatal and Injury Crashes in Santa Fe County, 2007-2016**



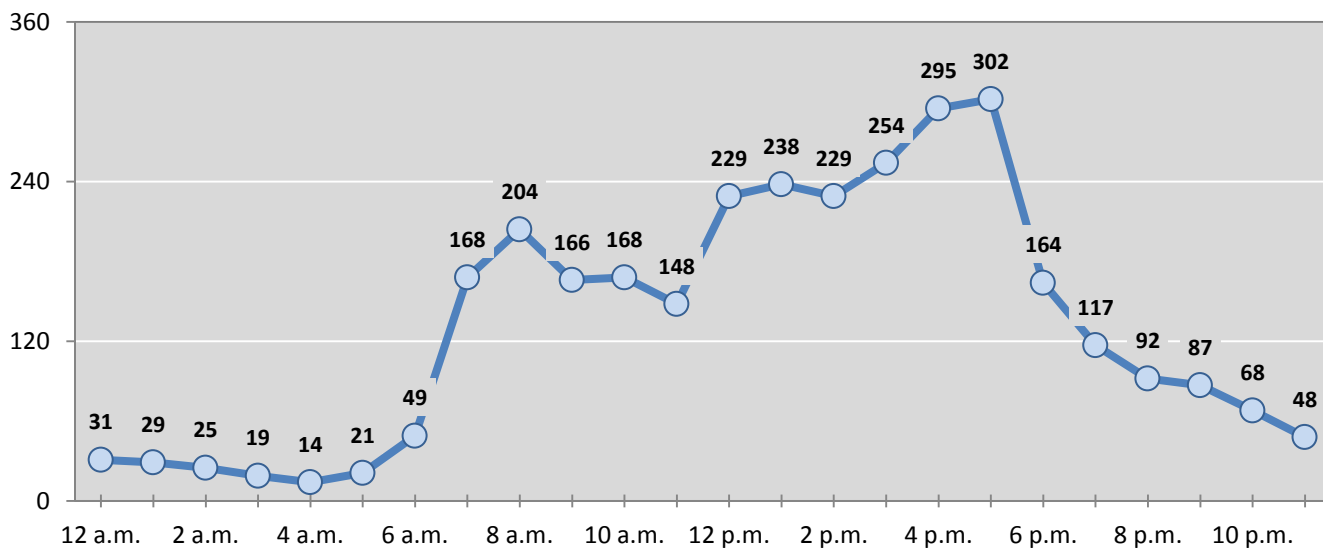
**Table 2: Crashes by Month in Santa Fe County, 2012-2016**

Month	Crashes					5-Year Average
	2012	2013	2014	2015	2016	
January	198	250	210	279	276	<b>243</b>
February	195	202	233	225	263	<b>224</b>
March	162	164	231	240	258	<b>211</b>
April	219	209	224	224	247	<b>225</b>
May	229	156	216	255	269	<b>225</b>
June	271	209	233	246	275	<b>247</b>
July	254	217	236	257	221	<b>237</b>
August	334	276	252	270	353	<b>297</b>
September	256	297	240	253	320	<b>273</b>
October	274	298	289	298	299	<b>292</b>
November	258	241	204	300	273	<b>255</b>
December	329	248	257	352	118	<b>261</b>
<b>Total Crashes</b>	<b>2,979</b>	<b>2,767</b>	<b>2,825</b>	<b>3,199</b>	<b>3,172</b>	<b>2,988</b>

**Table 3: Alcohol-involved Crashes by Month in Santa Fe County, 2012-2016**

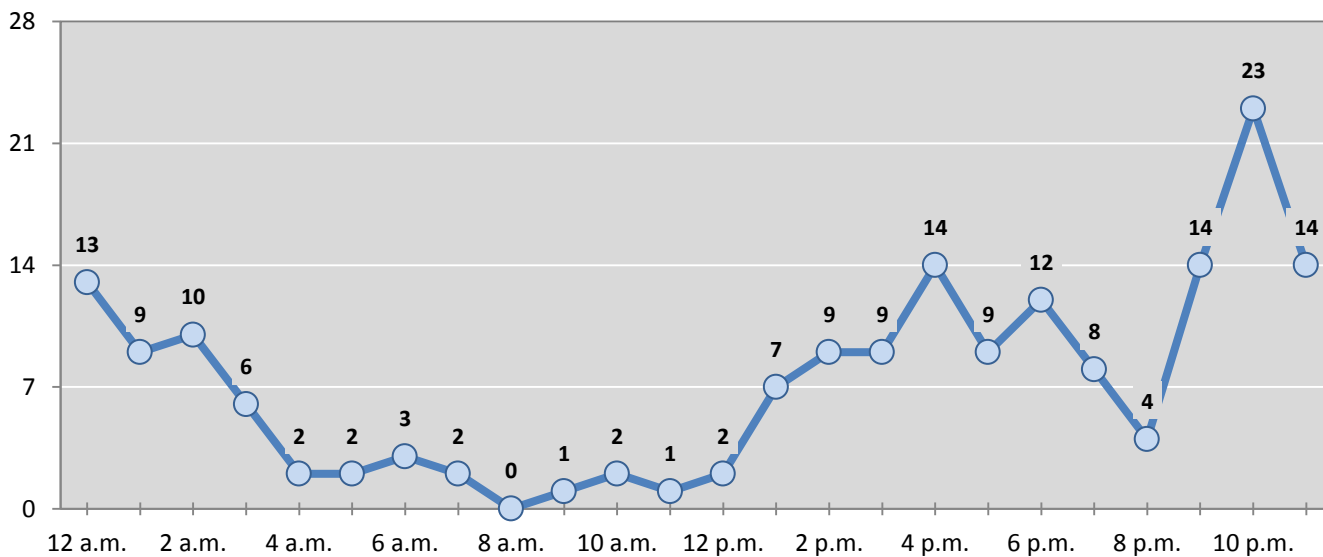
Month	Alcohol-involved Crashes					5-Year Average
	2012	2013	2014	2015	2016	
January	12	15	15	14	14	<b>14</b>
February	8	12	13	14	13	<b>12</b>
March	13	15	19	13	14	<b>15</b>
April	12	9	14	8	7	<b>10</b>
May	16	9	15	16	17	<b>15</b>
June	17	9	20	12	14	<b>14</b>
July	17	14	15	10	13	<b>14</b>
August	20	12	16	14	24	<b>17</b>
September	15	16	13	18	20	<b>16</b>
October	10	10	9	16	16	<b>12</b>
November	17	18	12	11	16	<b>15</b>
December	15	16	11	15	11	<b>14</b>
<b>Total Crashes</b>	<b>172</b>	<b>155</b>	<b>172</b>	<b>161</b>	<b>179</b>	<b>168</b>

**Figure 2: Crashes by Hour in Santa Fe County, 2016**



\* In 2016, Santa Fe County had 7 crashes for which hour data were missing.

**Figure 3: Alcohol-involved Crashes by Hour in Santa Fe County, 2016**



\* In 2016, Santa Fe County had 3 alcohol-involved crashes for which hour data were missing.

**Table 4: Alcohol-involved Crashes by Day of Week in Santa Fe County, 2012-2016**

Day of Week	Alcohol-involved Crashes					5-Year Average
	2012	2013	2014	2015	2016	
Sunday	35	25	34	26	22	<b>28</b>
Monday	15	15	20	24	22	<b>19</b>
Tuesday	19	23	23	23	19	<b>21</b>
Wednesday	15	27	18	18	17	<b>19</b>
Thursday	23	17	15	15	26	<b>19</b>
Friday	29	25	32	20	25	<b>26</b>
Saturday	36	23	30	35	48	<b>34</b>
<b>Total Crashes</b>	<b>172</b>	<b>155</b>	<b>172</b>	<b>161</b>	<b>179</b>	<b>168</b>

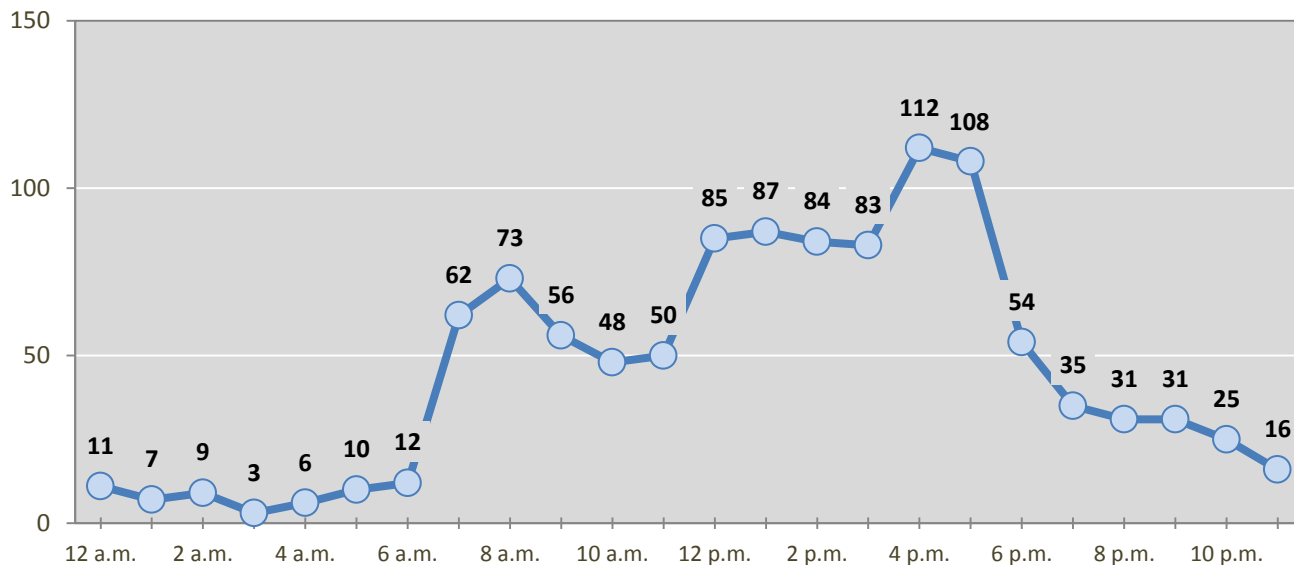
**Table 5: Fatal and Injury Crashes by Day of Week in Santa Fe County, 2012-2016**

Day of Week	Fatal and Injury Crashes					5-Year Average
	2012	2013	2014	2015	2016	
Sunday	119	78	100	106	92	<b>99</b>
Monday	145	127	125	178	155	<b>146</b>
Tuesday	124	151	139	177	167	<b>152</b>
Wednesday	154	148	115	153	183	<b>151</b>
Thursday	123	143	146	182	171	<b>153</b>
Friday	171	155	149	159	208	<b>168</b>
Saturday	114	100	118	126	122	<b>116</b>
<b>Total Crashes</b>	<b>950</b>	<b>902</b>	<b>892</b>	<b>1,081</b>	<b>1,098</b>	<b>985</b>

**Table 6: Pedestrian and Pedalcyclist Crashes by Day of Week in Santa Fe County, 2012-2016**

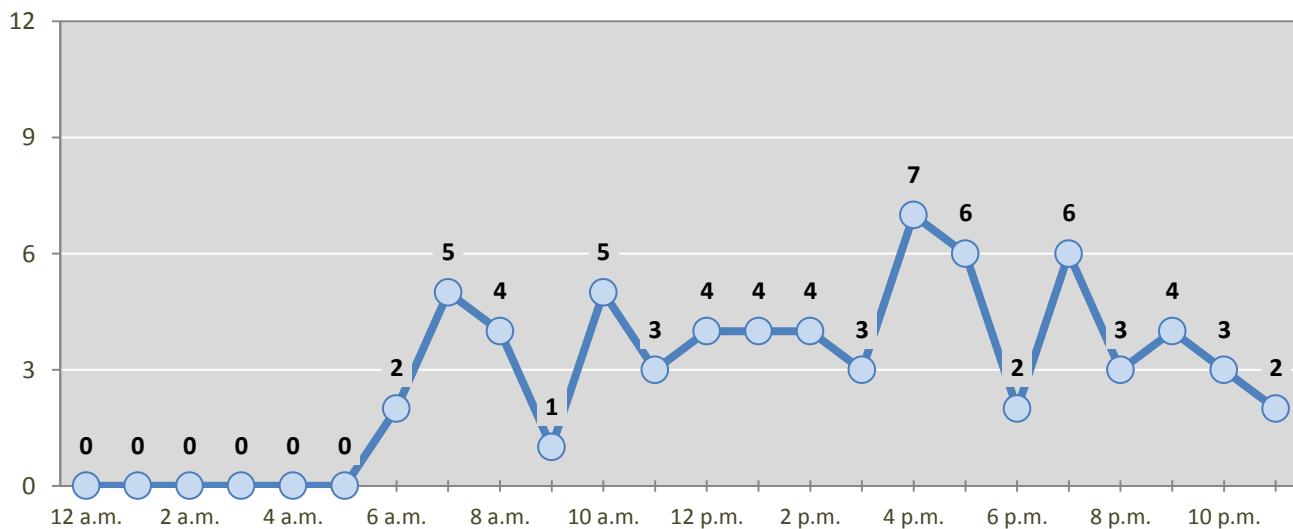
Day of Week	Pedestrian and Pedalcyclist Crashes					5-Year Average
	2012	2013	2014	2015	2016	
Sunday	5	4	9	8	5	<b>6</b>
Monday	14	11	6	15	8	<b>11</b>
Tuesday	14	5	14	17	15	<b>13</b>
Wednesday	17	8	8	8	12	<b>11</b>
Thursday	5	14	7	11	14	<b>10</b>
Friday	23	8	10	10	12	<b>13</b>
Saturday	7	10	6	13	2	<b>8</b>
<b>Total Crashes</b>	<b>85</b>	<b>60</b>	<b>60</b>	<b>82</b>	<b>68</b>	<b>71</b>

**Figure 4: Fatal and Injury Crashes by Hour in Santa Fe County, 2016**



\* In 2016, Santa Fe County had 0 crashes for which hour data were missing.

**Figure 5: Pedestrian and Pedalcyclist Crashes by Hour in Santa Fe County, 2016**



\* In 2016, Santa Fe County had 0 crashes for which hour data were missing.

**Table 7: Severity of Injuries to People in Crashes by Rural and Urban Location in Santa Fe County, 2016**

Urban and Rural Locations by Alcohol-involvement	People in Crashes by Severity of Injuries					Total People
	Fatalities (Class K)	Suspected Serious Injuries (Class A)	Suspected Minor Injuries (Class B)	Possible Injuries (Class C)	No Apparent Injuries (Class O)	
<b>People in Alcohol-involved Crashes</b>	<b>10</b>	<b>14</b>	<b>61</b>	<b>47</b>	<b>246</b>	<b>378</b>
Urban	6	8	36	36	186	272
Rural Non-Interstate	3	3	19	10	52	87
Rural Interstate	1	3	6	1	8	19
<b>People in Crashes</b>	<b>23</b>	<b>58</b>	<b>355</b>	<b>1,185</b>	<b>6,581</b>	<b>8,202</b>
Urban	12	32	215	1,008	5,569	6,836
Rural Non-Interstate	7	14	103	140	762	1,026
Rural Interstate	4	12	37	37	250	340
<b>Percent in Alcohol-involved Crashes</b>	<b>43%</b>	<b>24%</b>	<b>17%</b>	<b>4%</b>	<b>4%</b>	<b>5%</b>

**Table 8: Total Crashes by Roadway System and Crash Severity in Santa Fe County, 2012-2016**

Crash Severity by System	Crashes by Year					5-Year Average
	2012	2013	2014	2015	2016	
<b>Total Rural Interstate</b>	<b>142</b>	<b>92</b>	<b>106</b>	<b>169</b>	<b>150</b>	<b>132</b>
Fatal Crash	3	2	2	2	4	3
Injury Crash	39	26	27	49	46	37
Property Damage Only Crash	100	64	77	118	100	92
<b>Total Rural Non-Interstate</b>	<b>318</b>	<b>368</b>	<b>451</b>	<b>434</b>	<b>460</b>	<b>406</b>
Fatal Crash	6	0	5	3	6	4
Injury Crash	103	125	149	154	173	141
Property Damage Only Crash	209	243	297	277	281	261
<b>Total Urban</b>	<b>2,519</b>	<b>2,307</b>	<b>2,268</b>	<b>2,596</b>	<b>2,562</b>	<b>2,451</b>
Fatal Crash	9	6	10	8	10	9
Injury Crash	790	743	699	865	859	791
Property Damage Only Crash	1,720	1,558	1,559	1,723	1,693	1,651



**Table 9: Total Crashes by Crash Classification in Santa Fe County, 2012-2016**

Crash Classification	Total Crashes by Year					5-Year Average
	2012	2013	2014	2015	2016	
Animal	39	51	64	66	50	54
Fixed Object	359	353	361	443	414	386
Other (Non-Collision)	63	37	34	40	44	44
Other (Object)	69	52	58	63	44	57
Other Vehicle	2,071	1,965	2,008	2,261	2,339	2,129
Overturn/Rollover	142	122	131	53	67	103
Parked Vehicle	98	78	69	70	65	76
Pedalcyclist	47	28	23	38	38	35
Pedestrian	41	34	39	43	30	37
Railroad Train	0	2	1	0	0	1
Rollover	0	0	2	100	68	34
Vehicle on Other Road	16	17	14	14	12	15
Missing Data	34	28	21	8	1	18
<b>Total Crashes</b>	<b>2,979</b>	<b>2,767</b>	<b>2,825</b>	<b>3,199</b>	<b>3,172</b>	<b>2,988</b>

**Table 10: Vehicles in Crashes by Vehicle Type in Santa Fe County, 2012-2016**

Vehicle Type <sup>1</sup>	Vehicles in Crashes by Vehicle Type					5-Year Average
	2012	2013	2014	2015	2016	
Bus	28	25	24	25	29	26
Motorcycle	86	61	91	75	70	77
Passenger	2,675	2,411	2,255	3,225	3,497	2,813
Pedalcyclist	47	28	24	39	42	36
Pedestrian	39	34	38	46	31	38
Pickup	974	782	828	829	875	858
Semi	83	71	107	100	142	101
Van/SUV/4WD	842	1,030	991	1,066	1,153	1,016
Other Vehicle	348	293	138	198	25	200
Missing Data	320	346	666	318	70	344
<b>Total Vehicles</b>	<b>5,442</b>	<b>5,081</b>	<b>5,162</b>	<b>5,921</b>	<b>5,934</b>	<b>5,508</b>

<sup>1</sup> Pedestrians and pedalcyclists are counted as non-motorized vehicles, when involved in a crash with a motor vehicle. See Page 17 for data on drivers of non-motorized vehicles in crashes (i.e. pedestrians and pedalcyclists).

**Table 11: Motor Vehicle Drivers in Crashes by Vehicle Type and Age Group in Santa Fe County, 2016**

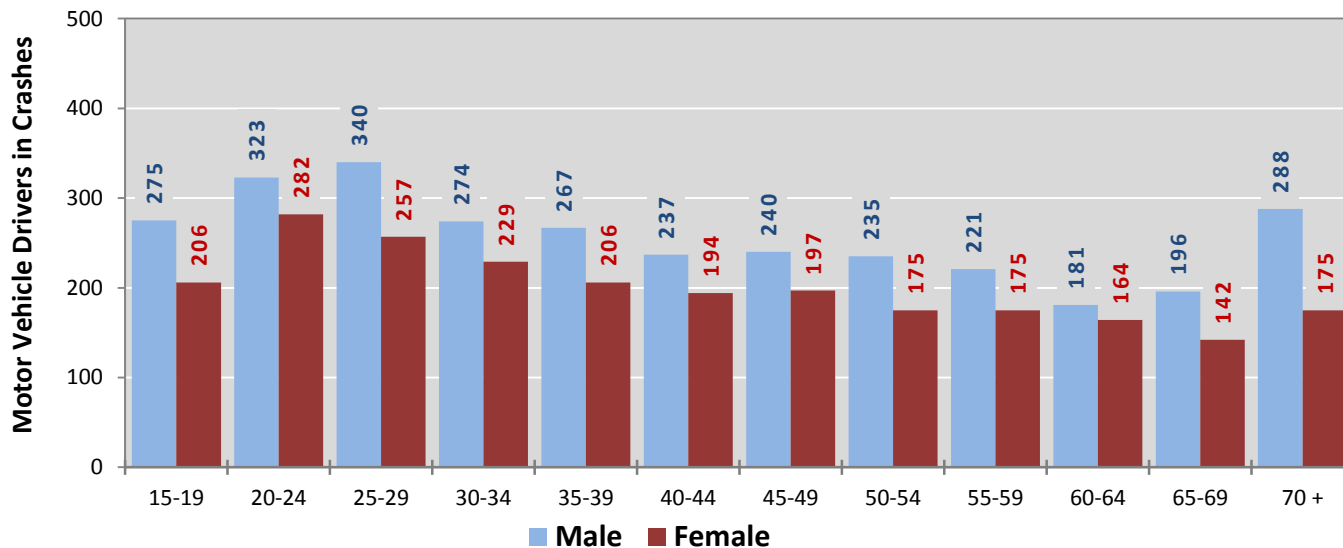
Age Groups	Motor Vehicle <sup>1</sup> Drivers by Vehicle Type and Age Group								Total Drivers
	Bus	Motor-cycle	Passenger	Pickup	Semi	Van 4WD SUV	Other Vehicle	Missing Data	
15-19	0	6	348	50	1	75	1	0	481
20-24	0	2	448	63	9	81	1	1	605
25-29	3	5	396	79	18	93	4	1	599
30-34	1	2	303	72	11	111	2	1	503
35-39	0	2	285	59	15	110	0	2	473
40-44	2	9	233	84	9	93	2	3	435
45-49	2	10	216	81	20	105	2	1	437
50-54	2	6	208	88	15	86	3	2	410
55-59	9	7	215	71	16	79	0	0	397
60-64	4	6	189	58	11	74	3	0	345
65-69	4	5	205	51	5	67	1	1	339
70 +	2	3	280	54	4	117	4	0	464
Missing Data	0	7	171	65	8	62	2	58	373
<b>Total Drivers</b>	<b>29</b>	<b>70</b>	<b>3,497</b>	<b>875</b>	<b>142</b>	<b>1,153</b>	<b>25</b>	<b>70</b>	<b>5,861</b>

**Table 12: Alcohol-involved Motor Vehicle Drivers in Crashes by Vehicle Type and Age Group in Santa Fe County, 2016**

Age Groups	Alcohol-involved Motor Vehicle <sup>1</sup> Drivers by Vehicle Type and Age Group								Total Drivers
	Bus	Motor-cycle	Passenger	Pickup	Semi	Van 4WD SUV	Other Vehicle	Missing Data	
15-19	0	0	8	0	0	1	0	0	9
20-24	0	0	21	3	0	2	0	0	26
25-29	0	0	20	4	0	7	0	0	31
30-34	0	0	15	2	0	6	0	0	23
35-39	0	0	15	7	0	5	0	0	27
40-44	0	0	5	6	0	5	0	0	16
45-49	0	2	7	1	0	3	0	0	13
50-54	0	0	3	3	0	1	0	0	7
55-59	0	0	4	3	0	1	0	0	8
60-64	0	0	1	2	0	2	0	0	5
65-69	0	0	2	0	0	0	0	0	2
70 +	0	0	3	0	0	1	0	0	4
Missing Data	0	0	4	1	0	0	0	0	5
<b>Total Drivers</b>	<b>0</b>	<b>2</b>	<b>108</b>	<b>32</b>	<b>0</b>	<b>34</b>	<b>0</b>	<b>0</b>	<b>176</b>

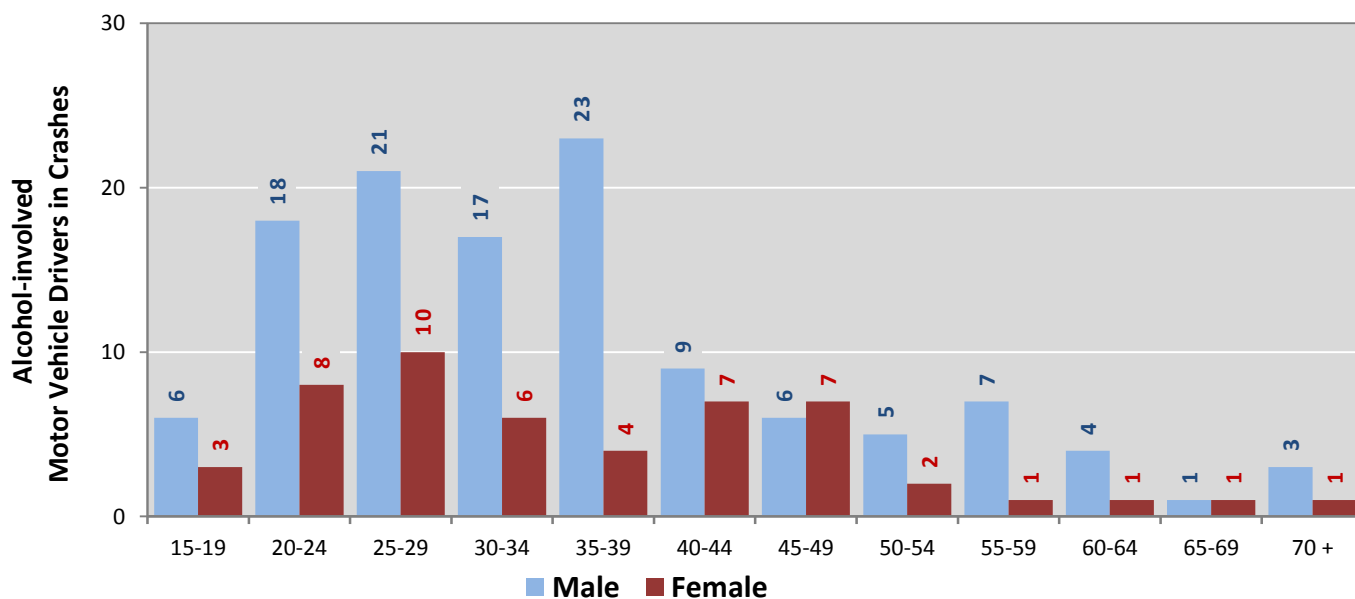
<sup>1</sup> See Page 17 for data on drivers of non-motorized vehicles in crashes (i.e. pedestrians and pedalcyclists).

**Figure 6: Motor Vehicle Drivers in Crashes by Age Group and Sex in Santa Fe County, 2016**



\* In 2016, Santa Fe County had 382 drivers in crashes for which age or sex data were missing.

**Figure 7: Alcohol-involved Motor Vehicle Drivers in Crashes by Age Group and Sex in Santa Fe County, 2016**



\* In 2016, Santa Fe County had 5 drivers in crashes for which age or sex data were missing.

**Table 13: Alcohol-involved Motor Vehicle Drivers Under 21 (Ages 15-20) in Crashes in Santa Fe County, 2012-2016**

Age <sup>1</sup>	Year					5-Year Total
	2012	2013	2014	2015	2016	
15	1	0	0	0	0	1
16	3	0	1	0	1	5
17	1	0	2	1	0	4
18	3	2	6	2	4	17
19	4	4	3	5	4	20
20	5	2	4	6	3	20
<b>Total Drivers</b>	<b>17</b>	<b>8</b>	<b>16</b>	<b>14</b>	<b>12</b>	<b>67</b>

**Table 14: Motor Vehicle Drivers Under 21 (Ages 15-20) in Crashes by Age, Sex and Alcohol-involvement in Santa Fe County, 2016**

Age <sup>1</sup>	Total Drivers				Alcohol-involved Drivers			
	Sex		Total Drivers	Percent of Total	Sex		Total Drivers	Percent of Total
	Male	Female			Male	Female		
15	7	4	11	2%	0	0	0	0%
16	53	41	94	15%	1	0	1	8%
17	60	46	106	17%	0	0	0	0%
18	71	52	123	20%	3	1	4	33%
19	84	63	147	24%	2	2	4	33%
20	65	66	131	21%	2	1	3	25%
<b>Total Drivers</b>	<b>340</b>	<b>272</b>	<b>612</b>	<b>100%</b>	<b>8</b>	<b>4</b>	<b>12</b>	<b>100%</b>

<sup>1</sup> For analysis of drivers under age 21, when the driver age or sex are not identified on the crash report (typically hit-and-run drivers), the driver data are considered unreliable and are excluded from the analysis.

**Table 15: Frequency of Contributing Factors in Crashes  
by Crash Severity in Santa Fe County, 2016**

Contributing Factors	Frequency of Contributing Factor <sup>1</sup> by Crash Severity			
	Frequency in Fatal Crashes	Frequency in Injury Crashes	Frequency in Property Damage Only Crashes	Frequency in All Crashes
<b>Human</b>	<b>37</b>	<b>1,568</b>	<b>2,600</b>	<b>4,205</b>
Driver Inattention	9	394	667	1,070
Following Too Closely	0	294	521	815
Failed to Yield Right of Way	1	217	310	528
Other Improper Driving	2	95	188	285
Excessive Speed	3	104	134	241
Alcohol Involved	8	86	86	180
Speed Too Fast for Conditions	1	62	106	169
Made Improper Turn	0	40	100	140
Avoid No Contact - Other	0	35	92	127
Improper Lane Change	0	17	94	111
Disregarded Traffic Signal	0	49	46	95
Avoid No Contact - Vehicle	3	34	43	80
Improper Backing	0	10	68	78
Drove Left Of Center	3	32	33	68
Improper Overtaking	1	18	45	64
Drug Involved	4	22	10	36
Passed Stop Sign	0	14	18	32
Cell Phone	0	9	11	20
Pedestrian Error	1	13	2	16
Vehicle Skidded Before Brake	1	7	8	16
High Speed Pursuit	0	6	6	12
Failed to Yield to Police Vehicle	0	4	5	9
Failed to Yield to Emergency Vehicle	0	4	2	6
Driverless Moving Vehicle	0	2	3	5
Texting	0	0	2	2
<b>Vehicle</b>	<b>2</b>	<b>54</b>	<b>53</b>	<b>109</b>
Other Mechanical Defect	1	24	16	41
Inadequate Brakes	0	19	15	34
Defective Tires	1	7	13	21
Defective Steering	0	4	9	13
<b>Environment</b>	<b>2</b>	<b>3</b>	<b>7</b>	<b>12</b>
Road Defect	0	2	5	7
Traffic Control Not Functioning	2	0	2	4
Low Visibility Due to Smoke	0	1	0	1
<b>Other</b>	<b>11</b>	<b>1,013</b>	<b>1,844</b>	<b>2,868</b>
None	11	897	1,585	2,493
Other - No Driver Error	0	116	259	375

<sup>1</sup> Multiple contributing factors may be reported for any vehicle in a crash.

**Table 16: People in Crashes by Crash Classification and Severity of Injuries in Santa Fe County, 2016**

Crash Classification	People in Crashes by Severity of Injuries					Total People
	Fatalities (Class K)	Suspected Serious Injuries (Class A)	Suspected Minor Injuries (Class B)	Possible Injuries (Class C)	No Apparent Injuries (Class O)	
Animal	0	0	1	2	78	81
Fixed Object	4	12	52	60	408	536
Other (Non-Collision)	0	0	11	7	45	63
Other (Object)	0	0	6	8	65	79
Other Vehicle	9	26	184	1,041	5,646	6,906
Overturn/Rollover	2	3	24	20	56	105
Parked Vehicle	0	0	8	1	141	150
Pedalcyclist	0	3	21	14	45	83
Pedestrian	1	3	12	13	41	70
Railroad Train	0	0	0	0	0	0
Rollover	7	11	33	16	33	100
Vehicle on Other Road	0	0	3	3	20	26
Missing Data	0	0	0	0	3	3
<b>Total People</b>	<b>23</b>	<b>58</b>	<b>355</b>	<b>1,185</b>	<b>6,581</b>	<b>8,202</b>

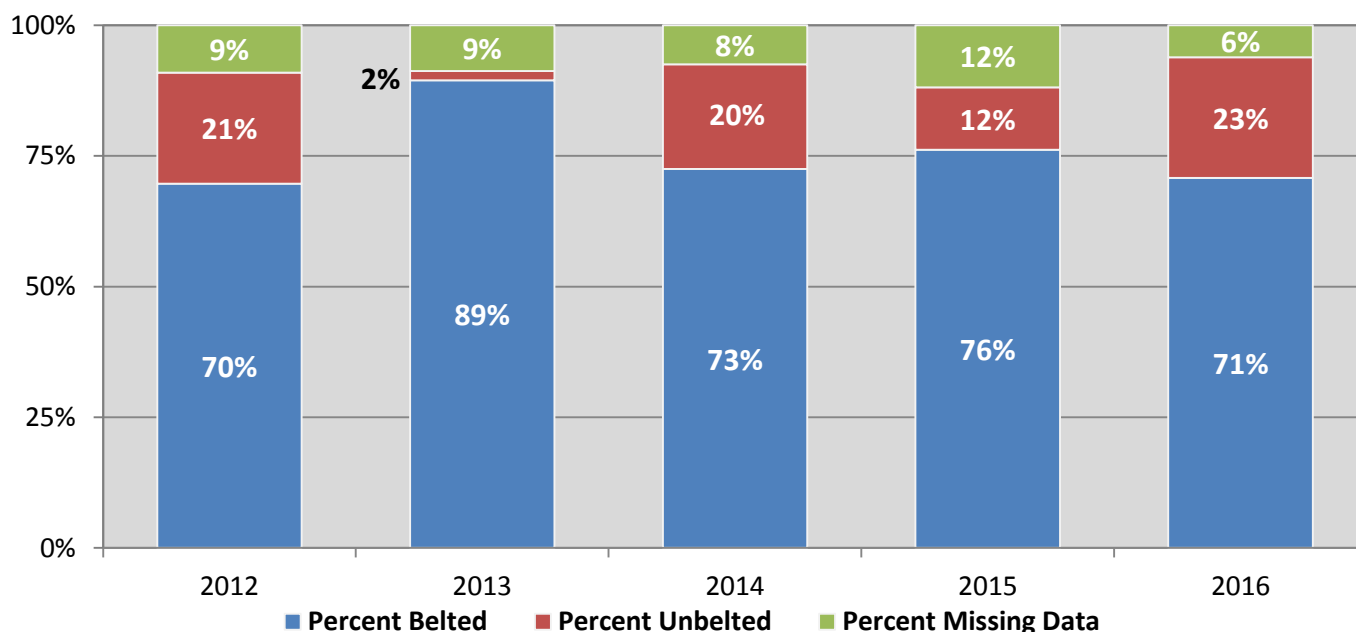
**Table 17: Killed or Injured Unbelted People in Crashes by Sex and Age Group in Santa Fe County, 2016**

Age Groups	Unbelted People Killed or Injured <sup>1,2</sup>				Total People
	Male	Percent of Male	Female	Percent of Female	
0-4	0	0%	0	0%	0
5-9	0	0%	0	0%	0
10-14	2	11%	1	5%	3
15-19	2	11%	5	24%	7
20-24	2	11%	2	10%	4
25-29	2	11%	4	19%	6
30-34	1	6%	2	10%	3
35-39	3	17%	2	10%	5
40-44	1	6%	1	5%	2
45-49	2	11%	0	0%	2
50-54	2	11%	0	0%	2
55-59	0	0%	2	10%	2
60-64	0	0%	0	0%	0
65-69	0	0%	2	10%	2
70 +	1	6%	0	0%	1
Missing Data	0	0%	0	0%	0
<b>Total People</b>	<b>18</b>	<b>100%</b>	<b>21</b>	<b>100%</b>	<b>39</b>

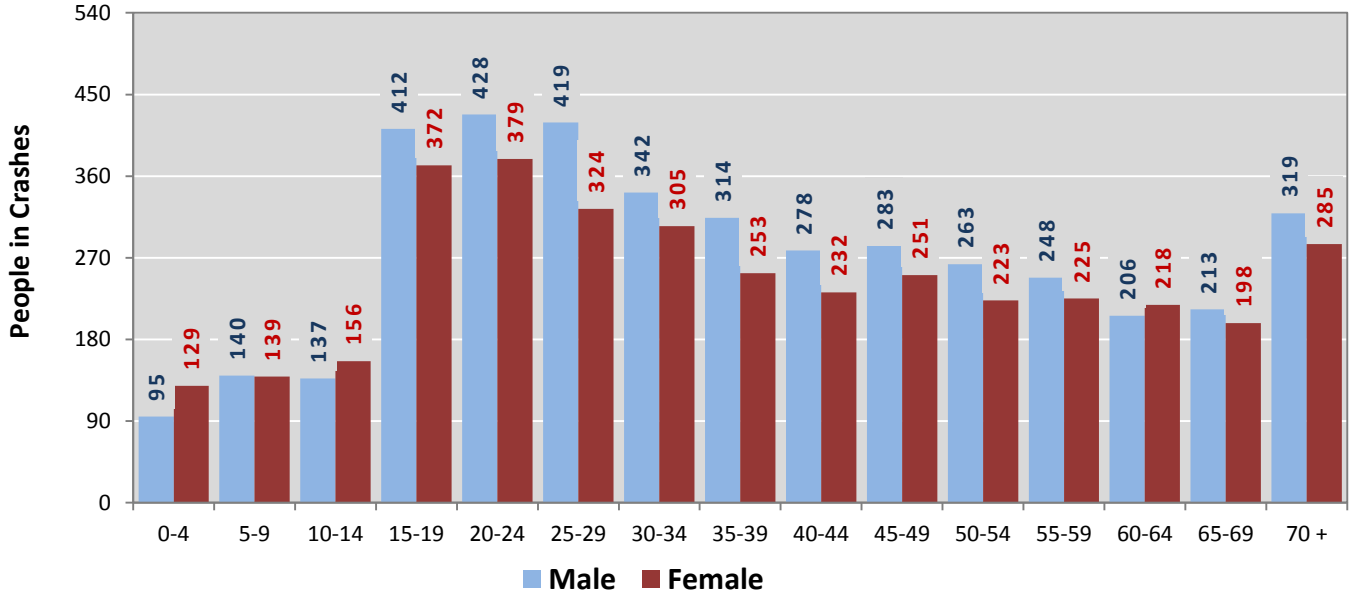
<sup>1</sup> People injured are in one of three categories: suspected serious injury, suspected minor injury, or possible injury.

<sup>2</sup> Excludes people in or on buses, heavy trucks, motorcycles, or ATVs.

**Figure 8: Seatbelt Use by People in Crashes with Fatal or Suspected Serious Injuries in Santa Fe County, 2012-2016**

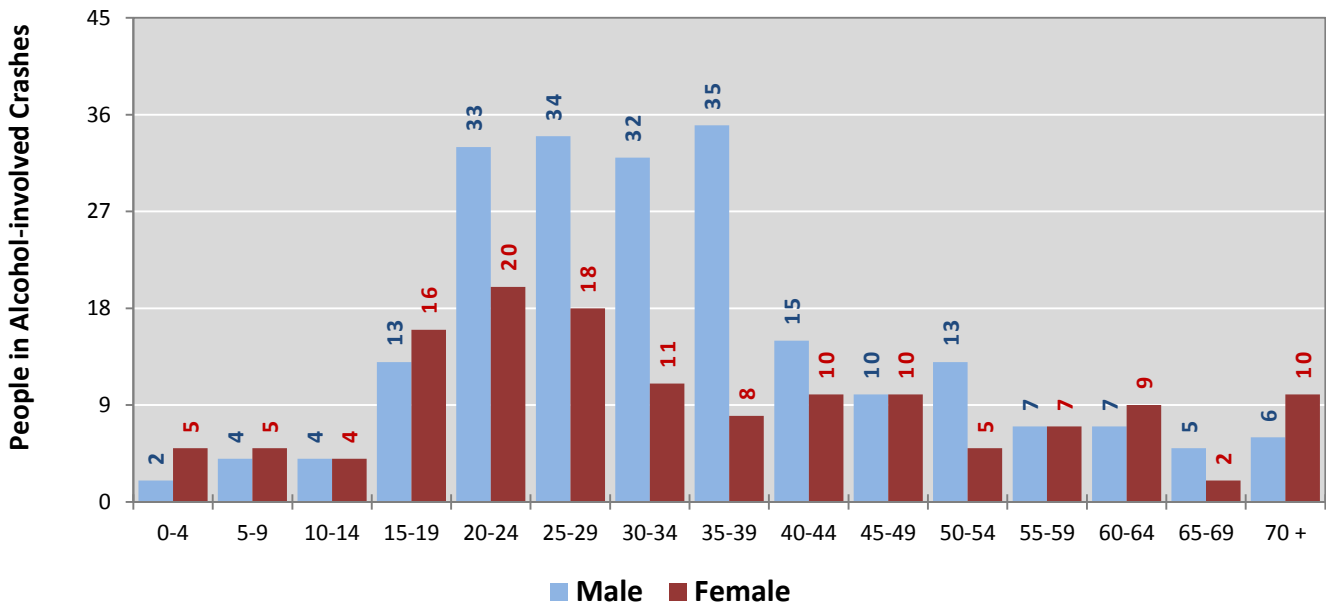


**Figure 9: People in Crashes by Age Group and Sex in Santa Fe County, 2016**



\* In 2016, Santa Fe County had 416 people in crashes for which age or sex data were missing.

**Figure 10: People in Alcohol-involved Crashes by Age Group and Sex in Santa Fe County, 2016**



\* In 2016, Santa Fe County had 18 people in alcohol-involved crashes for which age or sex data were missing.



**Table 18: Pedestrians and Pedalcyclists in Crashes by Age Group in Santa Fe County, 2012-2016**

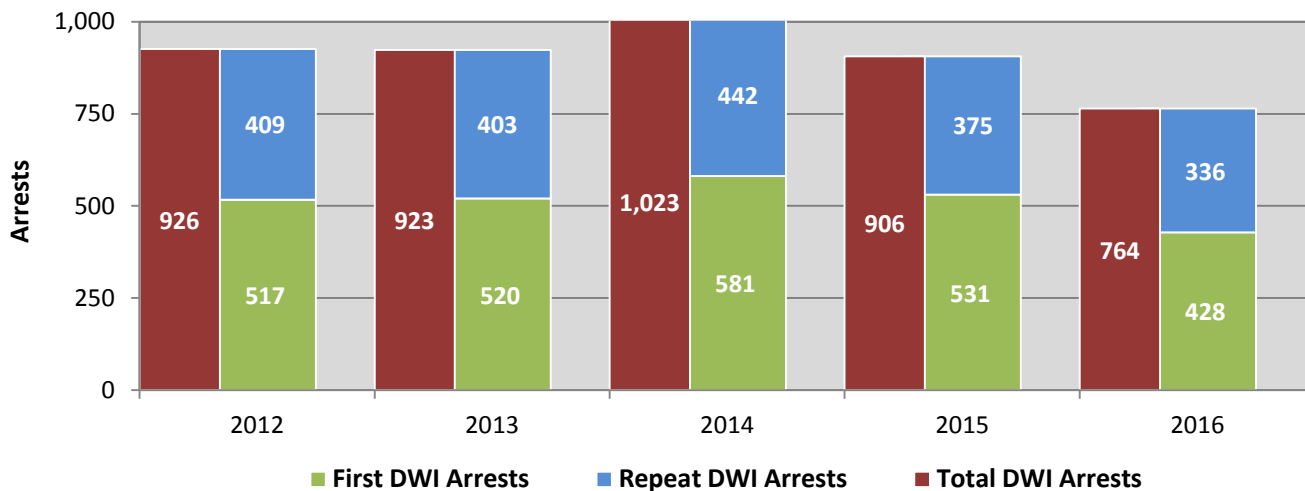
Age Groups	Pedestrians and Pedalcyclists <sup>1</sup> in Crashes					5-Year Total People
	2012	2013	2014	2015	2016	
0-4	0	1	1	1	2	5
5-9	2	1	2	1	1	7
10-14	9	1	1	2	1	14
15-19	3	3	2	9	5	22
20-24	9	4	3	8	9	33
25-29	7	9	6	8	5	35
30-34	2	4	3	10	6	25
35-39	9	3	4	6	9	31
40-44	6	3	3	5	3	20
45-49	9	9	10	5	8	41
50-54	9	10	6	5	7	37
55-59	5	2	7	7	9	30
60-64	4	4	8	9	2	27
65-69	6	2	4	1	2	15
70 +	4	2	1	6	3	16
Missing Data	4	4	1	2	1	12
<b>Total People</b>	<b>88</b>	<b>62</b>	<b>62</b>	<b>85</b>	<b>73</b>	<b>370</b>

**Table 19: Pedestrians and Pedalcyclists in Crashes by Alcohol Involvement and Severity of Injuries in Santa Fe County, 2016**

Alcohol Involvement	Pedestrians and Pedalcyclists <sup>1</sup> in Crashes					Total People
	Fatalities (Class K)	Suspected Serious Injuries (Class A)	Suspected Minor Injuries (Class B)	Possible Injuries (Class C)	No Apparent Injury (Class O)	
<b>Total Pedalcyclists</b>	<b>0</b>	<b>3</b>	<b>21</b>	<b>14</b>	<b>4</b>	<b>42</b>
Involved	0	0	0	0	0	0
Not Involved	0	3	21	14	4	42
<b>Total Pedestrians</b>	<b>1</b>	<b>3</b>	<b>12</b>	<b>13</b>	<b>2</b>	<b>31</b>
Involved	1	0	3	1	0	5
Not Involved	0	3	9	12	2	26
<b>Total People</b>	<b>1</b>	<b>6</b>	<b>33</b>	<b>27</b>	<b>6</b>	<b>73</b>

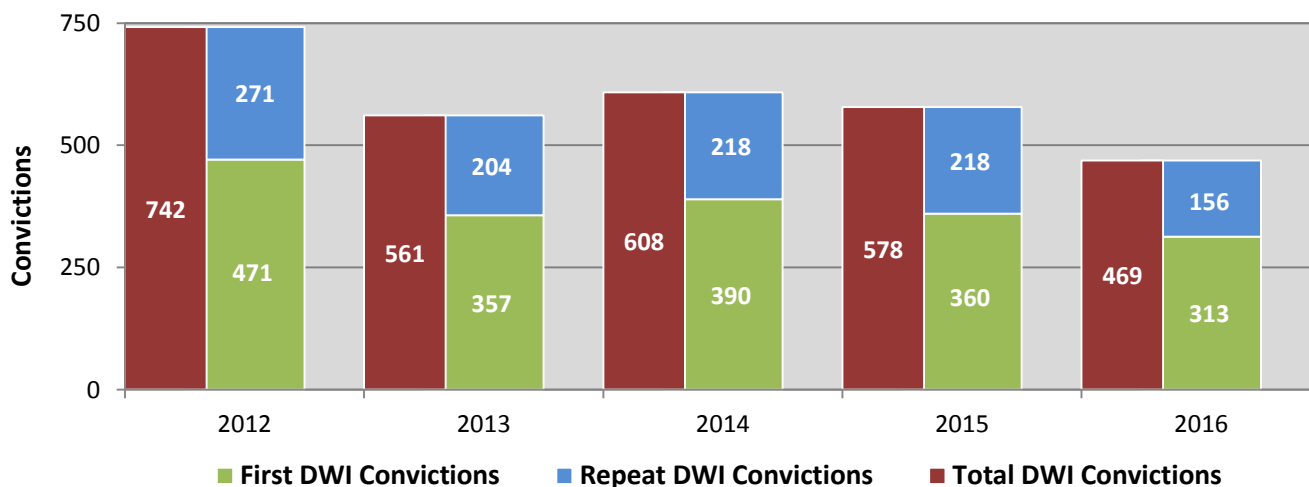
<sup>1</sup> Pedestrians and pedalcyclists are counted as non-motorized vehicles, when involved in a crash with a motor vehicle.

**Figure 11: DWI Arrests in Santa Fe County,  
Showing First and Repeat DWI Arrests, 2012-2016**



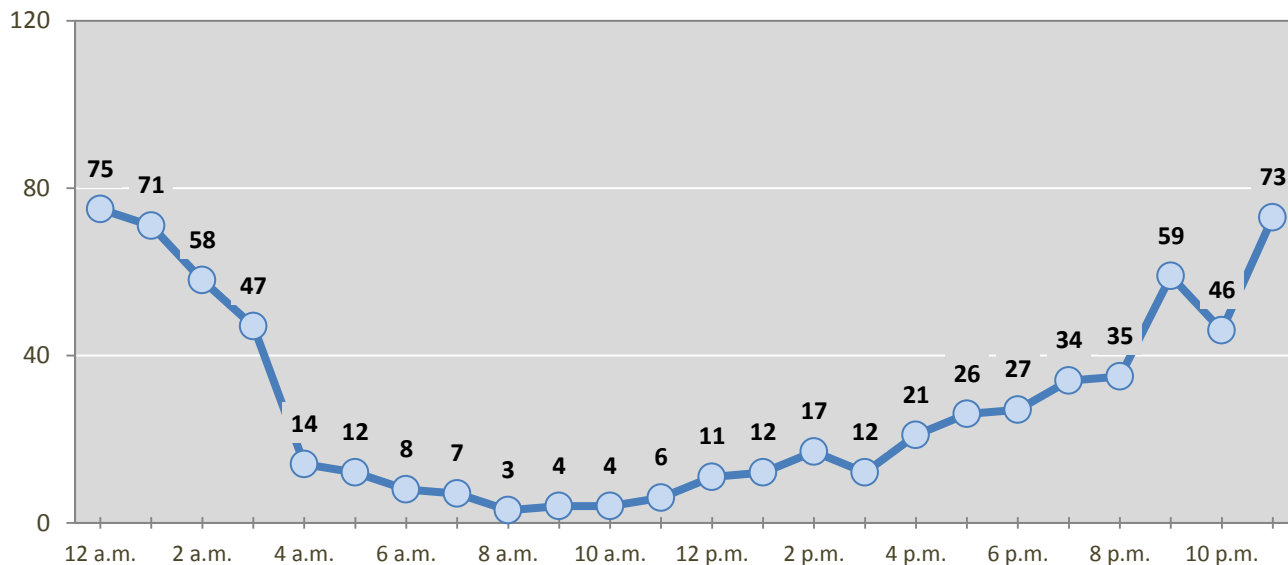
\*Values are based upon the year of the arrest.

**Figure 12: DWI Convictions in Santa Fe County,  
Showing First and Repeat DWI Convictions, 2012-2016**



\*Values are based upon the year of the conviction.

**Figure 13: DWI Arrests by Hour in Santa Fe County, 2016**



\* In 2016, Santa Fe County had 82 arrests for which hour data were missing.

**Table 20: DWI Arrests by Day of Week in Santa Fe County, 2012-2016**

Day of Week	Year					5-Year Average
	2012	2013	2014	2015	2016	
Sunday	190	160	216	180	131	175
Monday	93	95	124	107	73	98
Tuesday	67	92	89	95	70	83
Wednesday	92	97	86	79	86	88
Thursday	106	124	108	94	99	106
Friday	136	139	153	145	125	140
Saturday	242	216	247	206	180	218
<b>Total Arrests</b>	<b>926</b>	<b>923</b>	<b>1,023</b>	<b>906</b>	<b>764</b>	<b>908</b>

**Table 21: Driver First DWI Arrests by Age Group in Santa Fe County, 2012-2016**

Age Groups	Driver First DWI Arrests <sup>1</sup>				
	2012	2013	2014	2015	2016
15-19	45	41	32	32	21
20-24	112	123	127	102	90
25-29	81	90	114	105	86
30-34	78	85	65	69	55
35-39	50	50	61	39	40
40-44	38	37	55	39	31
45-49	40	29	32	47	26
50-54	31	30	42	29	21
55-59	21	19	24	22	19
60-64	10	7	11	18	12
65-69	6	5	4	13	10
70 +	3	2	7	4	7
Missing Data	2	2	7	12	10
<b>Total Drivers</b>	<b>517</b>	<b>520</b>	<b>581</b>	<b>531</b>	<b>428</b>

<sup>1</sup>Values are based upon the year of the arrest.

**Table 22: Driver Repeat DWI Arrests by Age Group in Santa Fe County, 2012-2016**

Age Groups	Driver Repeat DWI Arrests <sup>1</sup>				
	2012	2013	2014	2015	2016
15-19	6	6	4	3	2
20-24	35	32	28	35	26
25-29	61	60	68	52	46
30-34	71	51	70	58	59
35-39	48	47	69	65	61
40-44	57	50	60	46	34
45-49	42	62	59	34	36
50-54	35	46	35	35	33
55-59	24	24	26	24	22
60-64	19	11	14	11	9
65-69	10	10	7	7	3
70 +	0	3	0	4	3
Missing Data	1	1	2	1	2
<b>Total Drivers</b>	<b>409</b>	<b>403</b>	<b>442</b>	<b>375</b>	<b>336</b>

<sup>1</sup>Values are based upon the year of the arrest.

**Table 23: Driver First DWI Convictions by Age Group in Santa Fe County, 2012-2016**

Age Groups	Driver First DWI Convictions <sup>1</sup>				
	2012	2013	2014	2015	2016
15-19	30	26	16	14	12
20-24	105	69	95	97	55
25-29	86	68	75	61	62
30-34	66	62	49	45	50
35-39	47	33	42	23	30
40-44	34	29	36	32	27
45-49	36	27	21	34	23
50-54	27	18	25	18	23
55-59	26	14	12	15	8
60-64	9	5	10	10	8
65-69	4	4	3	4	6
70 +	0	1	1	2	2
Missing Data	1	1	5	5	7
<b>Total Drivers</b>	<b>471</b>	<b>357</b>	<b>390</b>	<b>360</b>	<b>313</b>

<sup>1</sup> Values are based upon the year of the conviction.

**Table 24: Driver Repeat DWI Convictions by Age Group in Santa Fe County, 2012-2016**

Age Groups	Driver Repeat DWI Convictions <sup>1</sup>				
	2012	2013	2014	2015	2016
15-19	1	2	0	1	0
20-24	15	13	12	11	12
25-29	47	27	35	32	21
30-34	47	27	24	40	26
35-39	39	34	36	34	25
40-44	37	33	34	25	17
45-49	33	28	34	26	18
50-54	25	20	20	21	20
55-59	10	9	9	18	9
60-64	13	5	9	3	5
65-69	4	4	5	4	1
70 +	0	1	0	2	1
Missing Data	0	1	0	1	1
<b>Total Drivers</b>	<b>271</b>	<b>204</b>	<b>218</b>	<b>218</b>	<b>156</b>

<sup>1</sup> Values are based upon the year of the conviction.

**Table 25: Court Disposition of DWI Arrests for Santa Fe County and the State, 2016**

Court Disposition of DWI Arrest <sup>1</sup>	Santa Fe County	Statewide	Percent of Statewide
Total DWI Arrests	764	10,344	<b>7.4%</b>
DWI Arrests Resulting in Convictions	372	5,541	<b>6.7%</b>
DWI Arrests Resulting in Dismissals <sup>2</sup>	168	1,512	<b>11.1%</b>
DWI Arrests Awaiting Disposition	224	3,291	<b>6.8%</b>

<sup>1</sup> These are the number of DWI arrests in 2016 and whether the case resulted in a conviction or dismissal, or is still awaiting court disposition, as reported in the NM MVD Citation Tracking System (CTS) as of December 2017.

<sup>2</sup> For this table, a very small number of "not guilty" rulings may be included in the category Dismissals.

**Table 26: Average Number of Days from Date of DWI Arrest to Date of Court Disposition in Santa Fe County and the State, 2016**

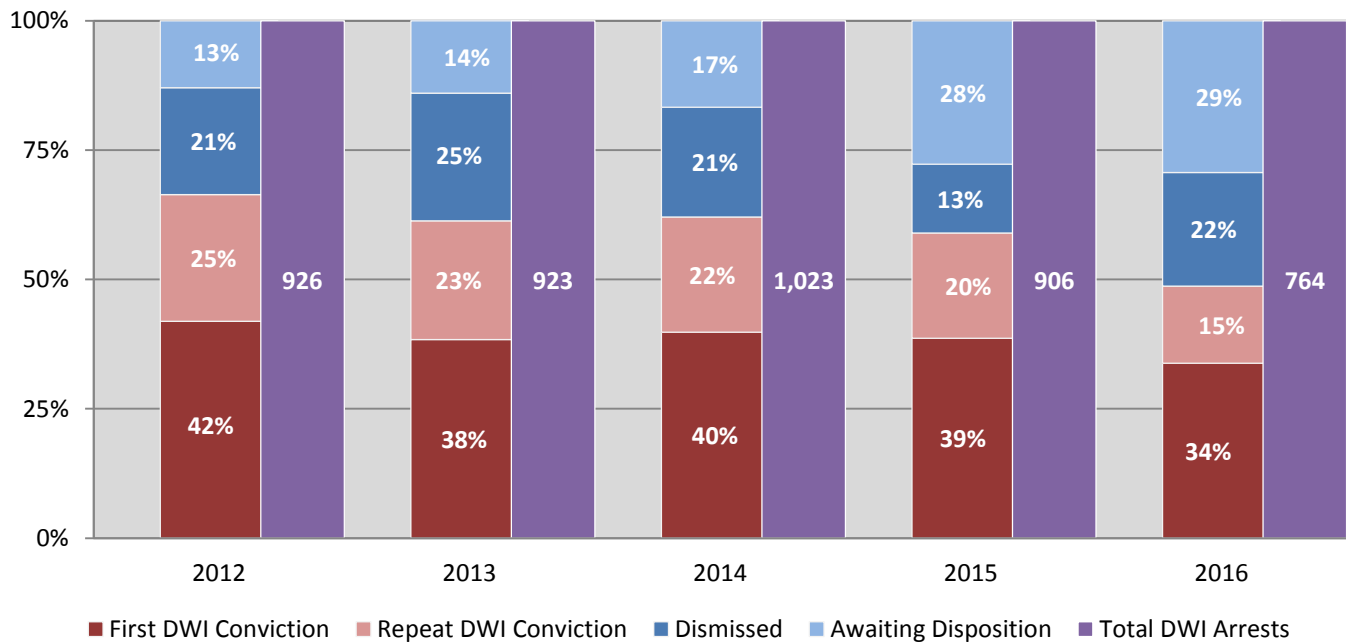
Court Disposition	Average Number of Days		Deviation from Statewide Average
	Santa Fe County	Statewide	
DWI Conviction	158	157	<b>1</b>
DWI Dismissal	154	179	<b>-25</b>

**Table 27: Court Disposition of DWI Arrests in Santa Fe County, 2012-2016**

Year of DWI Arrest <sup>1</sup>	Court Disposition				Total DWI Arrests
	First DWI Conviction	Repeat DWI Conviction	Dismissed	Awaiting Disposition	
2012	388	227	191	120	926
2013	354	212	228	129	923
2014	407	228	217	171	1,023
2015	350	184	121	251	906
2016	258	114	168	224	764

<sup>1</sup> Values are based upon the year of the arrest.

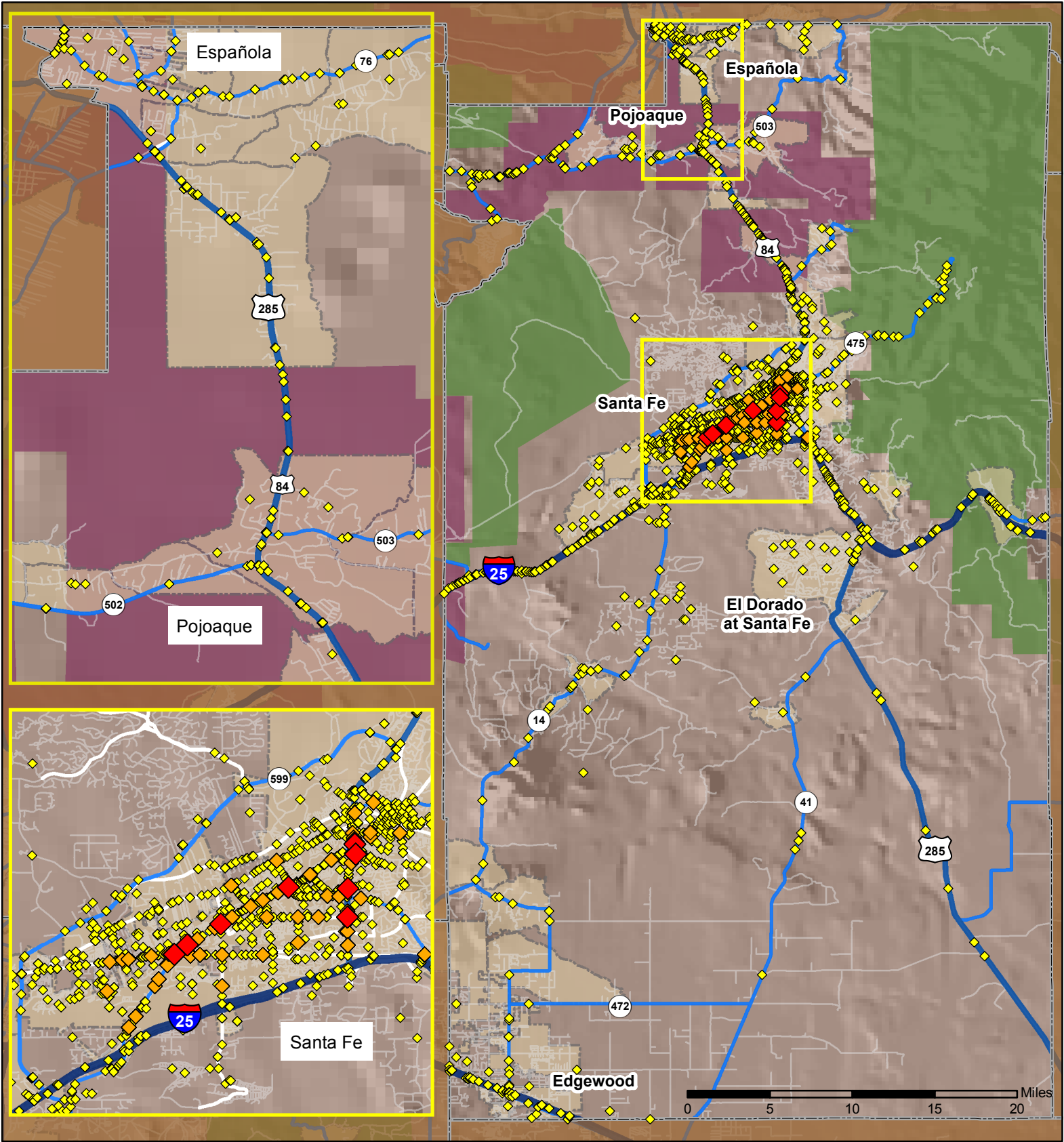
**Figure 14: Court Dispositions by Percentage of DWI Arrests in Santa Fe County, 2012-2016**



\*Table 27 contains the values used to calculate percentages shown in Figure 14.

# Crashes in Santa Fe County, New Mexico, 2016

Map created by the Traffic Research Unit, Geospatial & Population Studies at UNM



## Legend



- Forest & Wildlife Areas
- Reservations & Pueblos
- County Boundaries
- City Boundaries
- Interstate Highways
- U.S. Highways
- State Highways
- Streets & Roadways

## Crashes 2016

- 1 - 9 Crashes
- 10 - 25 Crashes
- 26 - 53 Crashes

Data Source: NMDOT Crash File 2016  
<http://tru.unm.edu> CO#5801 tru@unm.edu