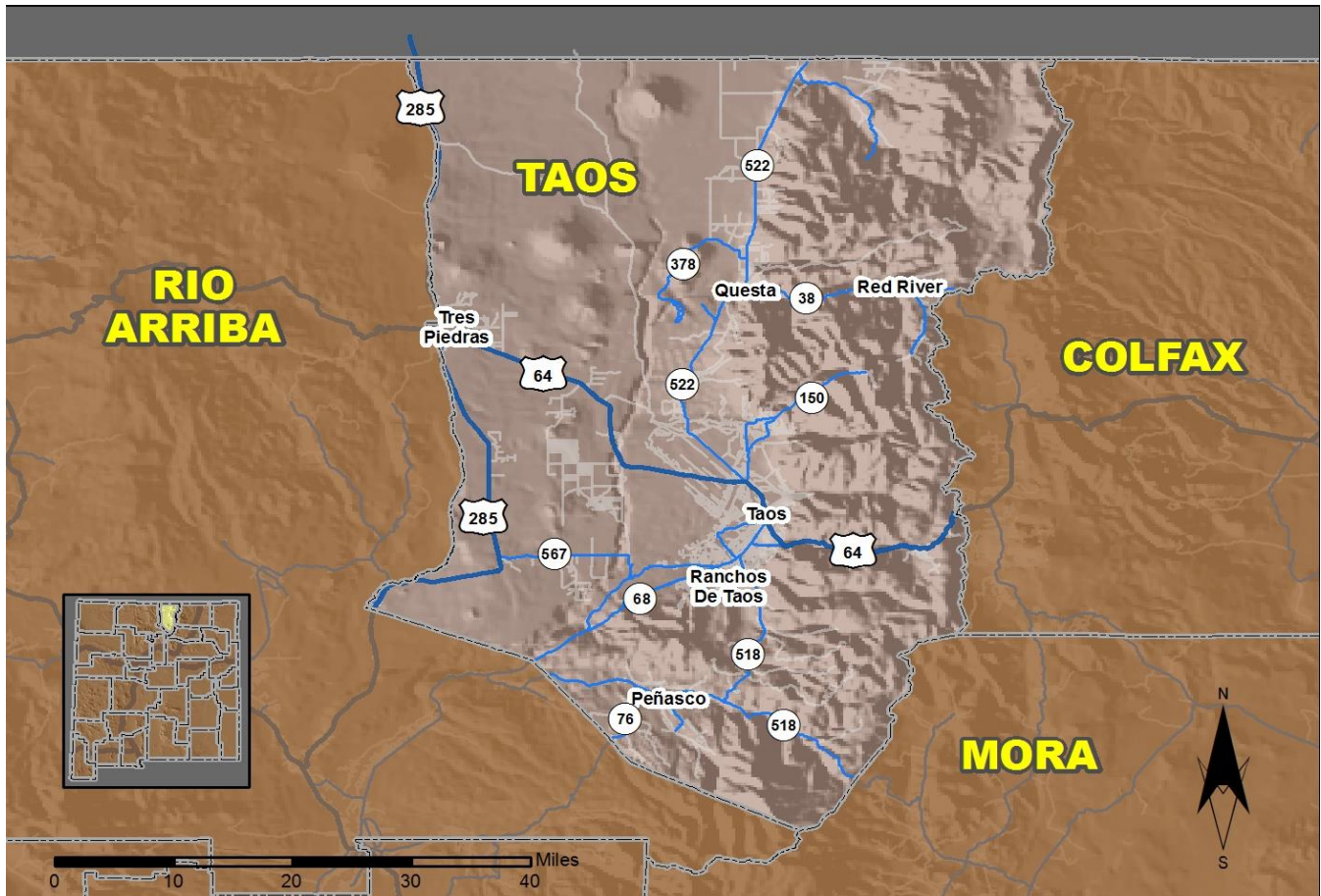


2016 Community Report

Taos County



Produced for the New Mexico Department of Transportation,
Traffic Safety Division, Traffic Records Bureau,
Under Contract 5801 by the University of New Mexico,
Geospatial and Population Studies, Traffic Research Unit

Distributed in compliance with New Mexico Statute 66-7-214
as a reference source regarding New Mexico traffic crashes

For the purposes of this report, data are compiled by the University of New Mexico, Geospatial and Population Studies, Traffic Research Unit (TRU), on behalf of the New Mexico Department of Transportation (NMDOT). Data in this report may differ from that in other data sources, such as the Federal Fatality Analysis Reporting System (FARS), due to the timing of publications and rules for how data are compiled and maintained in Federal vs. State databases. If you have questions regarding this report, please contact the Traffic Safety Division at 505-827-0427.

<http://tru.unm.edu/Crash-Reports/Community-Reports/>

Definitions

Aggravated DWI – A driver arrested for 1) driving with a BAC of 0.16 or higher, 2) driving under the influence of alcohol or drugs and causing bodily injury to a human being as a result, or 3) driving under the influence of alcohol or drugs and refusing to submit to a BAC test at the time of arrest for DWI.

Alcohol-involved Crash – A crash for which the Uniform Crash Report indicated that 1) a DWI citation was issued, 2) alcohol was a contributing factor, or 3) a person in control of a vehicle (including a pedestrian or pedalcyclist) was suspected of being under the influence of alcohol.

Alcohol-involved Driver – A person in control of a vehicle who was cited for DWI or indicated on the Uniform Crash Report as being either suspected or determined by testing to be under the influence of alcohol. There can be multiple alcohol-involved drivers in a single alcohol-involved crash.

Crash – A reported incident on a public roadway involving one or more motor vehicles that resulted in death, personal injury, or at least \$500 in property damage. Crashes on private property (such as a parking lot) are not included.

DWI Arrest (Citation) – In this report, a DWI arrest (a.k.a. a DWI citation) is a driver arrested for either DWI or aggravated DWI. New Mexico’s legal limit for presumption of driving while intoxicated (DWI) is 0.08 for non-commercial drivers older than 21 years of age, 0.04 for commercial vehicle drivers, and 0.02 for drivers younger than 21 years of age.

DWI Conviction – A driver convicted of driving under the intoxicating influence of alcohol, narcotics, or pathogenic drugs, including aggravated DWI.

Fatal Crash – A crash in which at least one person was killed. More than one person can be killed in a single fatal crash.

Fatalities – The number of people killed in a crash. The terms “killed” and “deaths” are synonymous with “fatalities.” A fatality is crash-related if it occurs at the time of the crash or if the person(s) involved in the crash dies within 30 days.

Injury Crash – A reported crash in which at least one person was injured. Injury crashes involve at least one suspected serious injury (Class A), suspected minor injury (Class B), or possible injury (Class C). Fatal crashes are not included.

Missing Data – An indication that the applicable field on the UCR form was left blank or contained an invalid code. Starting with crashes that occurred in 2012, improvements in the identification of missing data in the NMDOT crash database led to an increase in the reported amount of missing data.

Pedalcyclist – A person riding a mechanism of transport that is powered solely by pedals (a.k.a. bicyclist).

Pedestrian – A person on foot, walking, running, jogging, hiking, sitting or lying down who is involved in a motor vehicle traffic crash.

Sources

Crash Data – New Mexico Department of Transportation, Traffic Safety Division, Traffic Records Bureau, Traffic Crash Database, as of the report date below. Crash data are compiled using NMDOT Uniform Crash Reports (UCR), submitted by law enforcement agencies in the state, for any incident on a public roadway involving one or more motor vehicles that resulted in death, injury, or at least \$500 in property damage. These reports are processed by the NMDOT Traffic Records Bureau and analyzed by the University of New Mexico, Geospatial and Population Studies, Traffic Research Unit (TRU).

DWI Citation Tracking System (CTS) – New Mexico Taxation and Revenue Department (NM TRD), Motor Vehicle Division (MVD), DWI Citation Tracking System (CTS), as of December 2017. Repeat offenders are identified by the combination of account key, arrest date, and citation number. County data are based upon the county where the arrest took place. City data are based upon the city where the offender resides.

Urban Areas – New Mexico Department of Transportation, Asset Management and Planning, 2010 U.S. Census Urbanized Area Boundaries, NMDOT-Adjusted, and U.S. Census Urban Clusters, August 21, 2013. In crashes before 2013, “urban” was defined as a town or city with a population of at least 2,500 people.

Table 1: Total Crashes and Alcohol-involved Crashes by Crash Severity in Taos County, 2007-2016

Year	Total Crashes				Alcohol-involved Crashes			
	Fatal	Injury	Property Damage Only	Total	Fatal	Injury	Property Damage Only	Total
2007	11	158	330	499	5	23	14	42
2008	7	157	335	499	3	18	17	38
2009	8	231	514	753	6	30	28	64
2010	11	213	560	784	5	36	28	69
2011	7	210	483	700	5	29	30	64
2012	8	159	408	575	4	12	30	46
2013	6	77	289	372	3	6	11	20
2014	10	78	239	327	6	9	7	22
2015	2	81	274	357	2	9	5	16
2016	8	116	261	385	5	6	6	17

Figure 1: Alcohol-involved Fatal and Injury Crashes Compared to Non-alcohol-involved Fatal and Injury Crashes in Taos County, 2007-2016

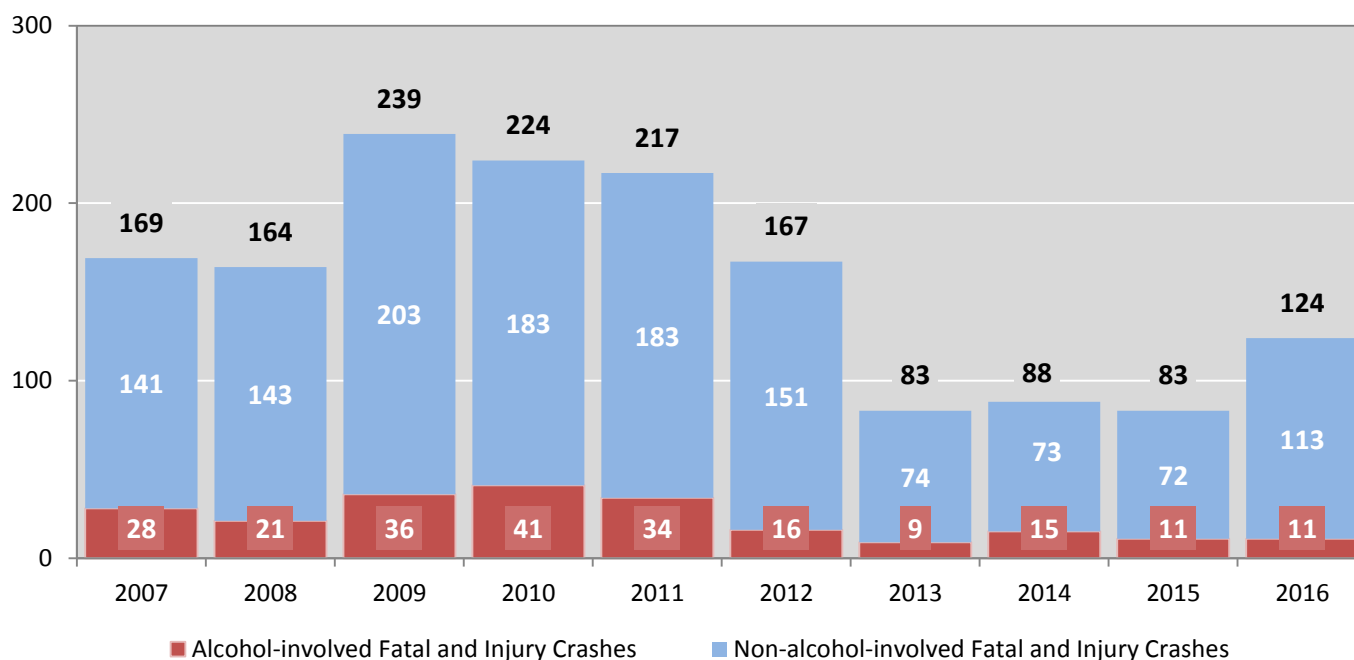


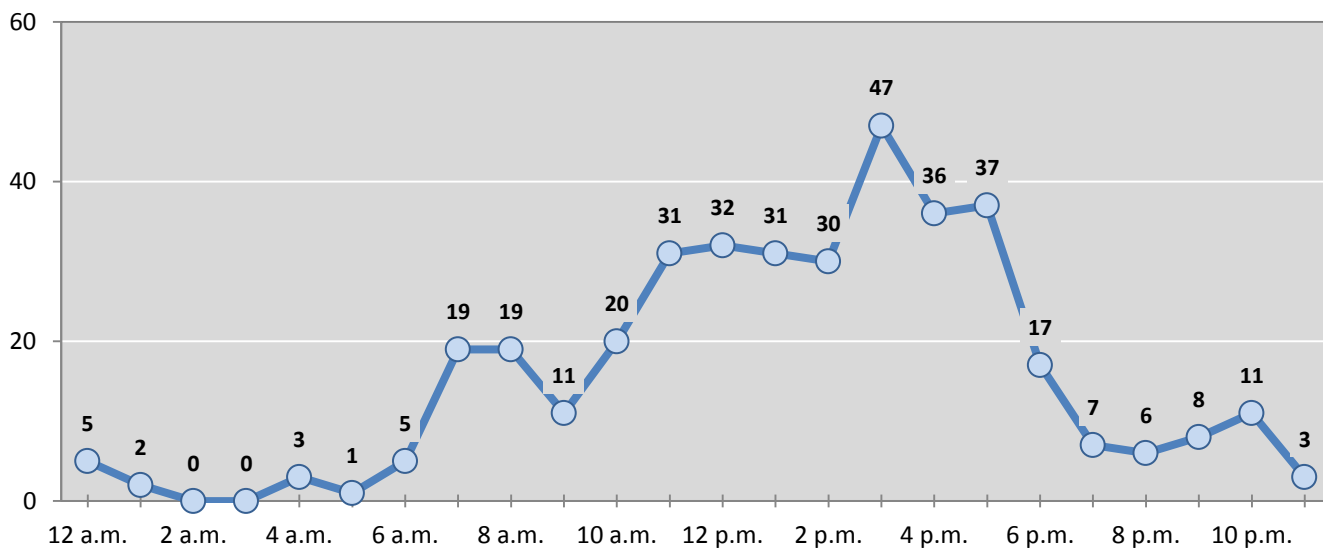
Table 2: Crashes by Month in Taos County, 2012-2016

Month	Crashes					5-Year Average
	2012	2013	2014	2015	2016	
January	71	40	36	27	40	43
February	44	24	19	24	33	29
March	42	23	29	29	28	30
April	53	24	13	18	30	28
May	43	19	10	16	18	21
June	63	22	26	44	29	37
July	64	44	28	32	32	40
August	56	34	30	27	35	36
September	29	33	31	34	30	31
October	35	34	31	41	41	36
November	33	36	34	28	27	32
December	42	39	40	37	42	40
Total Crashes	575	372	327	357	385	403

Table 3: Alcohol-involved Crashes by Month in Taos County, 2012-2016

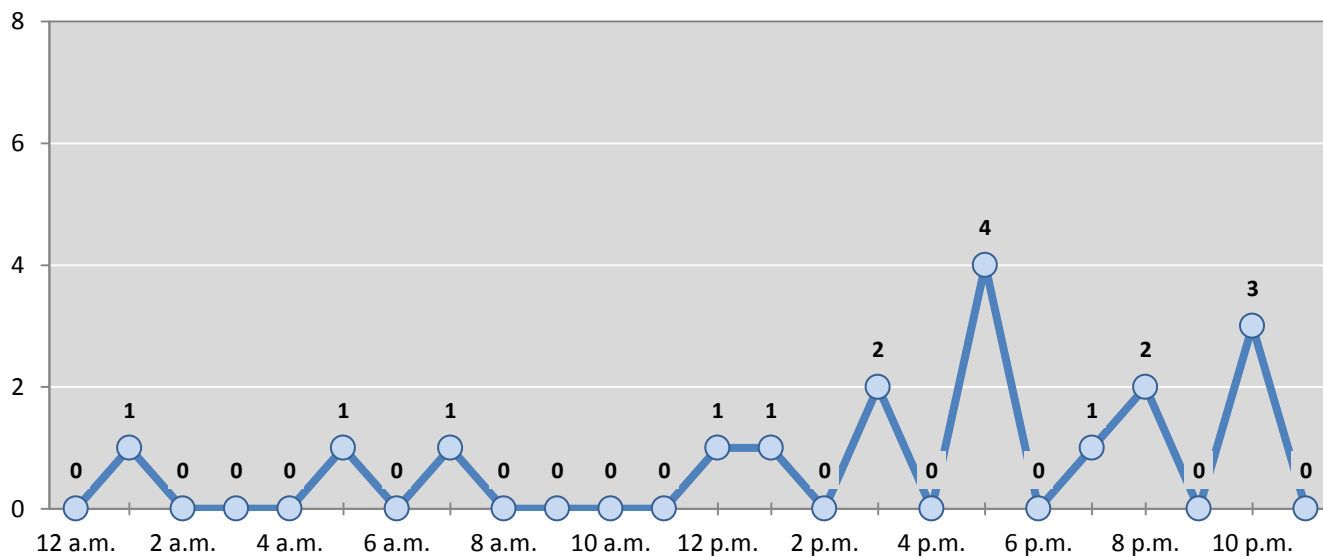
Month	Alcohol-involved Crashes					5-Year Average
	2012	2013	2014	2015	2016	
January	6	1	0	1	1	2
February	2	2	1	1	0	1
March	3	1	3	3	2	2
April	4	0	0	2	1	1
May	3	3	0	1	0	1
June	5	3	2	0	1	2
July	9	0	5	0	2	3
August	5	1	2	0	3	2
September	3	3	4	2	0	2
October	0	1	2	4	2	2
November	2	3	3	2	2	2
December	4	2	0	0	3	2
Total Crashes	46	20	22	16	17	24

Figure 2: Crashes by Hour in Taos County, 2016



* In 2016, Taos County had 4 crashes for which hour data were missing.

Figure 3: Alcohol-involved Crashes by Hour in Taos County, 2016



* In 2016, Taos County had 0 alcohol-involved crashes for which hour data were missing.

Table 4: Alcohol-involved Crashes by Day of Week in Taos County, 2012-2016

Day of Week	Alcohol-involved Crashes					5-Year Average
	2012	2013	2014	2015	2016	
Sunday	10	3	5	1	3	4
Monday	7	1	2	3	1	3
Tuesday	4	1	3	1	2	2
Wednesday	6	3	1	2	3	3
Thursday	7	5	5	0	1	4
Friday	3	1	3	4	5	3
Saturday	9	6	3	5	2	5
Total Crashes	46	20	22	16	17	24

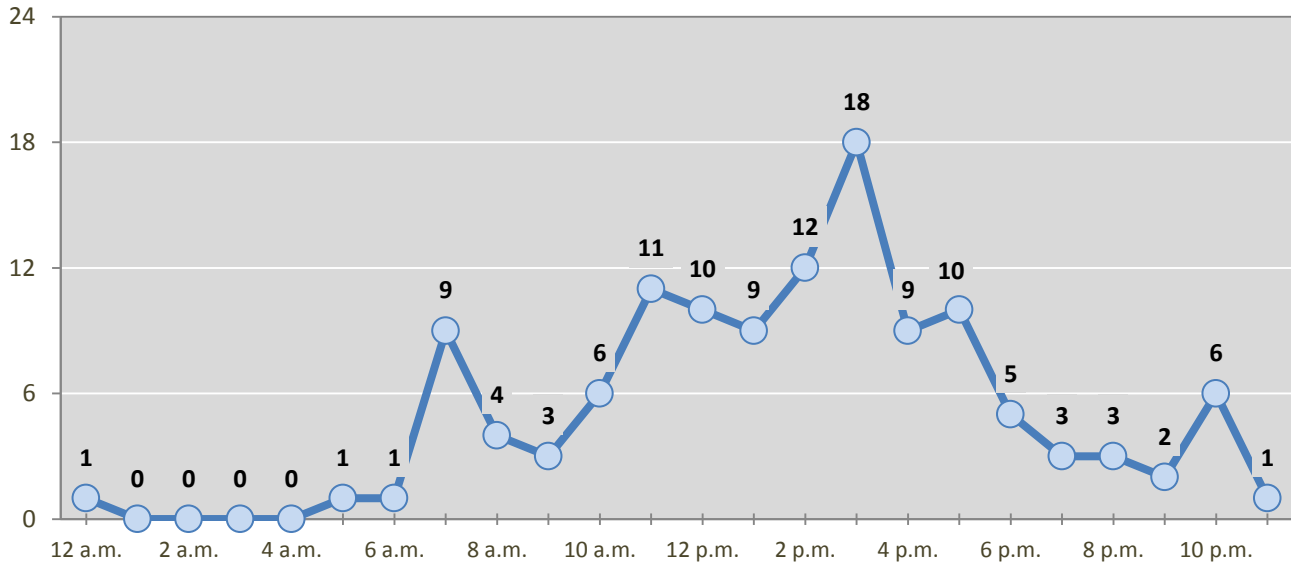
Table 5: Fatal and Injury Crashes by Day of Week in Taos County, 2012-2016

Day of Week	Fatal and Injury Crashes					5-Year Average
	2012	2013	2014	2015	2016	
Sunday	21	13	6	7	11	12
Monday	25	15	13	11	19	17
Tuesday	25	13	16	15	21	18
Wednesday	24	8	13	10	19	15
Thursday	20	10	15	12	25	16
Friday	20	15	13	13	13	15
Saturday	32	9	12	15	16	17
Total Crashes	167	83	88	83	124	109

Table 6: Pedestrian and Pedalcyclist Crashes by Day of Week in Taos County, 2012-2016

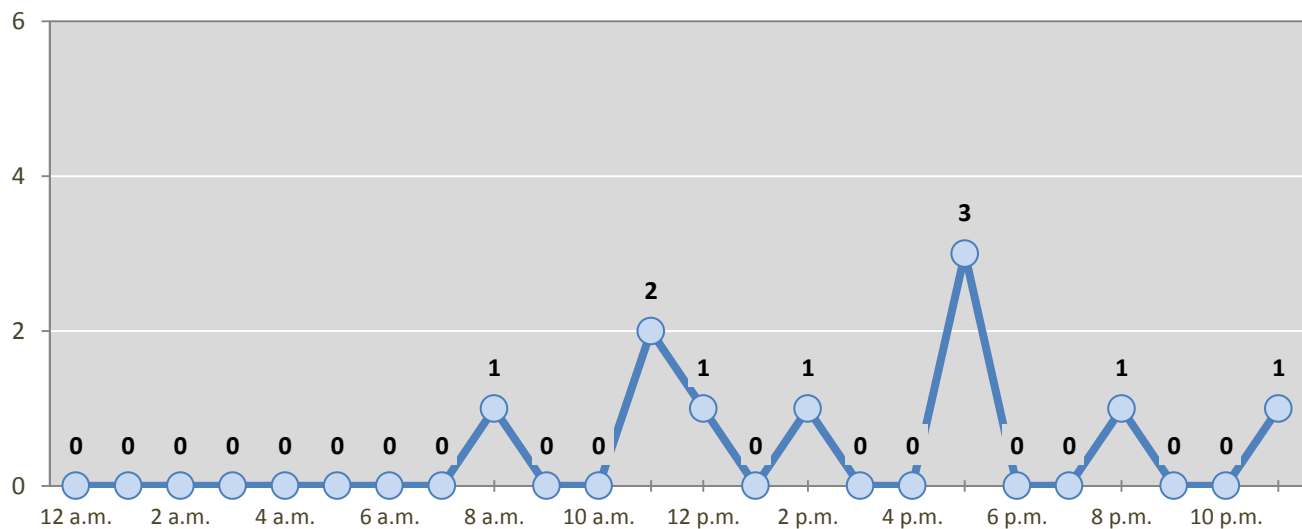
Day of Week	Pedestrian and Pedalcyclist Crashes					5-Year Average
	2012	2013	2014	2015	2016	
Sunday	1	0	0	1	0	0
Monday	1	2	1	0	1	1
Tuesday	0	1	2	2	2	1
Wednesday	0	2	2	3	1	2
Thursday	2	0	2	3	2	2
Friday	0	1	1	2	2	1
Saturday	1	1	0	1	2	1
Total Crashes	5	7	8	12	10	8

Figure 4: Fatal and Injury Crashes by Hour in Taos County, 2016



* In 2016, Taos County had 0 crashes for which hour data were missing.

Figure 5: Pedestrian and Pedalcyclist Crashes by Hour in Taos County, 2016



* In 2016, Taos County had 0 crashes for which hour data were missing.

Table 7: Severity of Injuries to People in Crashes by Rural and Urban Location in Taos County, 2016

Urban and Rural Locations by Alcohol-involvement	People in Crashes by Severity of Injuries					Total People
	Fatalities (Class K)	Suspected Serious Injuries (Class A)	Suspected Minor Injuries (Class B)	Possible Injuries (Class C)	No Apparent Injuries (Class O)	
People in Alcohol-involved Crashes	5	0	4	8	24	41
Urban	1	0	2	8	19	30
Rural Non-Interstate	4	0	2	0	5	11
Rural Interstate	0	0	0	0	0	0
People in Crashes	8	2	42	128	849	1,029
Urban	1	2	29	122	729	883
Rural Non-Interstate	7	0	13	6	120	146
Rural Interstate	0	0	0	0	0	0
Percent in Alcohol-involved Crashes	63%	0%	10%	6%	3%	4%

Table 8: Total Crashes by Roadway System and Crash Severity in Taos County, 2012-2016

Crash Severity by System	Crashes by Year					5-Year Average
	2012	2013	2014	2015	2016	
Total Rural Interstate	0	0	0	0	0	0
Fatal Crash	0	0	0	0	0	0
Injury Crash	0	0	0	0	0	0
Property Damage Only Crash	0	0	0	0	0	0
Total Rural Non-Interstate	239	84	77	75	79	110
Fatal Crash	8	4	5	2	7	5
Injury Crash	75	16	10	13	13	25
Property Damage Only Crash	156	64	62	60	59	80
Total Urban	336	288	250	282	306	293
Fatal Crash	0	2	5	0	1	2
Injury Crash	84	61	68	68	103	77
Property Damage Only Crash	252	225	177	214	202	214

Table 9: Total Crashes by Crash Classification in Taos County, 2012-2016

Crash Classification	Total Crashes by Year					5-Year Average
	2012	2013	2014	2015	2016	
Animal	35	30	19	24	19	25
Fixed Object	103	45	40	36	37	52
Other (Non-Collision)	11	2	6	2	3	5
Other (Object)	21	11	4	12	4	10
Other Vehicle	312	240	217	240	287	259
Overturn/Rollover	55	17	18	2	12	21
Parked Vehicle	18	9	13	13	6	12
Pedalcyclist	3	3	4	8	4	4
Pedestrian	3	4	4	4	6	4
Railroad Train	0	0	0	0	0	0
Rollover	0	0	0	11	5	3
Vehicle on Other Road	7	3	0	5	1	3
Missing Data	7	8	2	0	1	4
Total Crashes	575	372	327	357	385	403

Table 10: Vehicles in Crashes by Vehicle Type in Taos County, 2012-2016

Vehicle Type ¹	Vehicles in Crashes by Vehicle Type					5-Year Average
	2012	2013	2014	2015	2016	
Bus	4	2	4	4	6	4
Motorcycle	19	12	9	5	11	11
Passenger	387	264	178	225	331	277
Pedalcyclist	3	3	4	8	5	5
Pedestrian	2	4	4	5	6	4
Pickup	231	157	125	159	182	171
Semi	13	14	13	19	7	13
Van/SUV/4WD	173	134	176	165	137	157
Other Vehicle	32	14	10	26	9	18
Missing Data	69	48	65	32	28	48
Total Vehicles	933	652	588	648	722	709

¹ Pedestrians and pedalcyclists are counted as non-motorized vehicles, when involved in a crash with a motor vehicle. See Page 17 for data on drivers of non-motorized vehicles in crashes (i.e. pedestrians and pedalcyclists).

Table 11: Motor Vehicle Drivers in Crashes by Vehicle Type and Age Group in Taos County, 2016

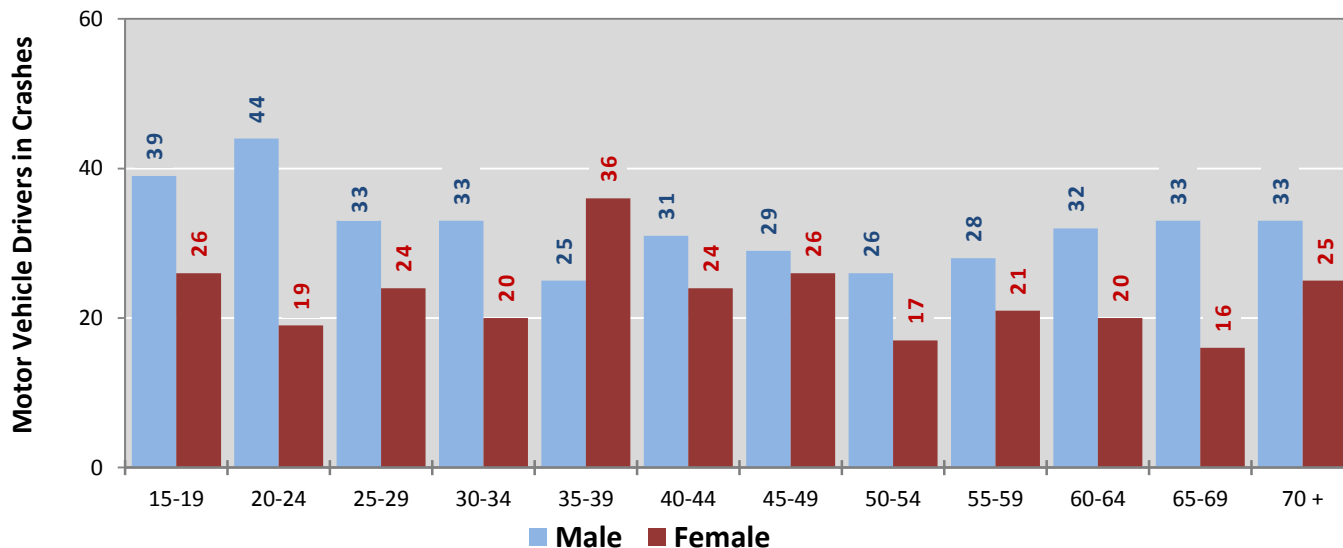
Age Groups	Motor Vehicle ¹ Drivers by Vehicle Type and Age Group								Total Drivers
	Bus	Motor-cycle	Passenger	Pickup	Semi	Van 4WD SUV	Other Vehicle	Missing Data	
15-19	0	0	36	17	0	11	0	1	65
20-24	0	4	28	17	0	12	1	1	63
25-29	0	1	35	9	0	11	0	1	57
30-34	0	2	24	10	1	15	1	0	53
35-39	1	1	31	16	0	12	1	0	62
40-44	0	0	27	16	1	10	1	0	55
45-49	0	1	23	18	2	7	2	2	55
50-54	2	1	18	11	1	8	2	0	43
55-59	1	0	24	15	0	9	0	0	49
60-64	0	0	21	16	1	13	1	0	52
65-69	1	0	19	16	0	13	0	0	49
70 +	0	0	30	14	0	13	0	2	59
Missing Data	1	1	15	7	1	3	0	21	49
Total Drivers	6	11	331	182	7	137	9	28	711

Table 12: Alcohol-involved Motor Vehicle Drivers in Crashes by Vehicle Type and Age Group in Taos County, 2016

Age Groups	Alcohol-involved Motor Vehicle ¹ Drivers by Vehicle Type and Age Group								Total Drivers
	Bus	Motor-cycle	Passenger	Pickup	Semi	Van 4WD SUV	Other Vehicle	Missing Data	
15-19	0	0	0	0	0	0	0	0	0
20-24	0	0	0	0	0	1	0	0	1
25-29	0	0	0	0	0	1	0	1	2
30-34	0	0	2	0	0	0	0	0	2
35-39	0	0	2	1	0	1	0	0	4
40-44	0	0	1	0	0	0	0	0	1
45-49	0	0	1	0	0	1	0	0	2
50-54	0	0	0	0	0	0	0	0	0
55-59	0	0	0	0	0	1	0	0	1
60-64	0	0	0	0	0	1	0	0	1
65-69	0	0	0	0	0	0	0	0	0
70 +	0	0	1	0	0	0	0	0	1
Missing Data	0	0	0	0	0	0	0	0	0
Total Drivers	0	0	7	1	0	6	0	1	15

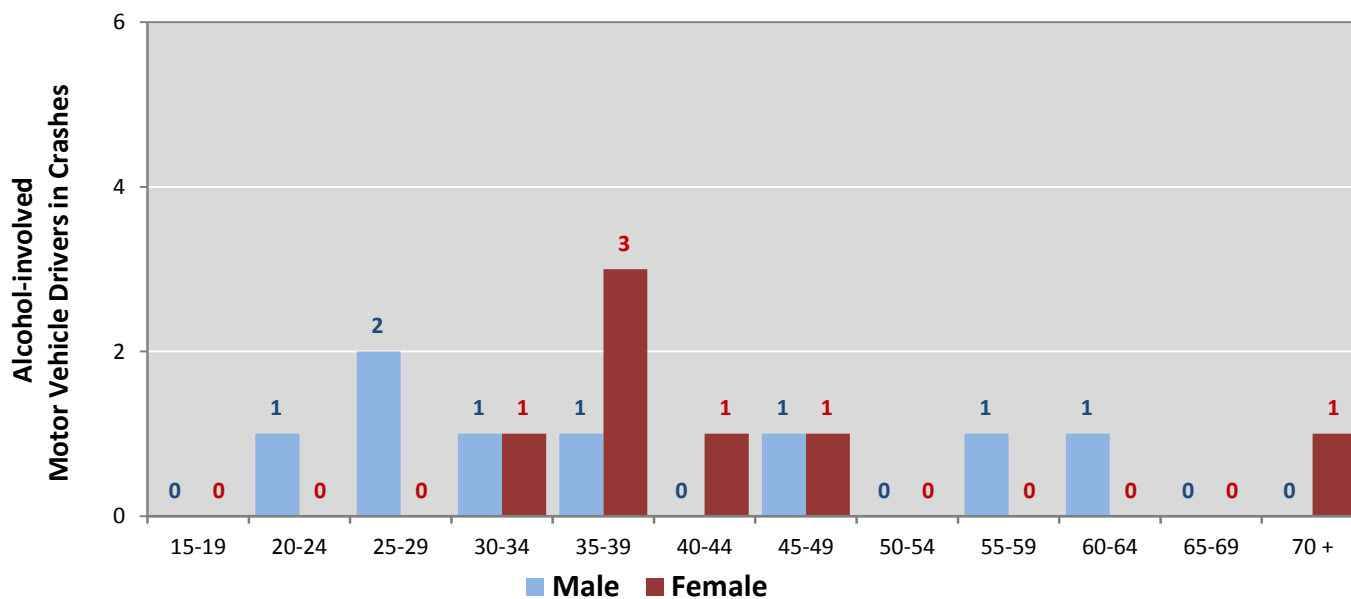
¹ See Page 17 for data on drivers of non-motorized vehicles in crashes (i.e. pedestrians and pedalcyclists).

Figure 6: Motor Vehicle Drivers in Crashes by Age Group and Sex in Taos County, 2016



* In 2016, Taos County had 51 drivers in crashes for which age or sex data were missing.

Figure 7: Alcohol-involved Motor Vehicle Drivers in Crashes by Age Group and Sex in Taos County, 2016



* In 2016, Taos County had 0 drivers in crashes for which age or sex data were missing.

Table 13: Alcohol-involved Motor Vehicle Drivers Under 21 (Ages 15-20) in Crashes in Taos County, 2012-2016

Age ¹	Year					5-Year Total
	2012	2013	2014	2015	2016	
15	0	0	0	0	0	0
16	1	0	0	1	0	2
17	3	0	1	0	0	4
18	0	1	0	1	0	2
19	1	0	0	0	0	1
20	1	0	0	0	0	1
Total Drivers	6	1	1	2	0	10

Table 14: Motor Vehicle Drivers Under 21 (Ages 15-20) in Crashes by Age, Sex and Alcohol-involvement in Taos County, 2016

Age ¹	Total Drivers				Alcohol-involved Drivers			
	Sex		Total Drivers	Percent of Total	Sex		Total Drivers	Percent of Total
	Male	Female			Male	Female		
15	4	1	5	7%	0	0	0	0%
16	9	4	13	17%	0	0	0	0%
17	8	3	11	14%	0	0	0	0%
18	12	9	21	28%	0	0	0	0%
19	6	9	15	20%	0	0	0	0%
20	7	4	11	14%	0	0	0	0%
Total Drivers	46	30	76	100%	0	0	0	0%

¹ For analysis of drivers under age 21, when the driver age or sex are not identified on the crash report (typically hit-and-run drivers), the driver data are considered unreliable and are excluded from the analysis.

**Table 15: Frequency of Contributing Factors in Crashes
by Crash Severity in Taos County, 2016**

Contributing Factors	Frequency of Contributing Factor ¹ by Crash Severity			
	Frequency in Fatal Crashes	Frequency in Injury Crashes	Frequency in Property Damage Only Crashes	Frequency in All Crashes
Human	19	180	368	567
Driver Inattention	2	61	96	159
Following Too Closely	0	34	66	100
Other Improper Driving	1	16	49	66
Failed to Yield Right of Way	0	16	33	49
Excessive Speed	4	15	16	35
Avoid No Contact - Vehicle	0	7	18	25
Improper Backing	0	1	19	20
Alcohol Involved	5	6	6	17
Drove Left Of Center	2	2	12	16
Made Improper Turn	0	4	12	16
Speed Too Fast for Conditions	0	5	10	15
Avoid No Contact - Other	2	4	8	14
Improper Overtaking	1	1	7	9
Passed Stop Sign	0	1	7	8
Improper Lane Change	0	1	6	7
Drug Involved	1	2	0	3
Cell Phone	0	1	1	2
Disregarded Traffic Signal	0	1	1	2
Failed to Yield to Emergency Vehicle	0	1	0	1
Failed to Yield to Police Vehicle	0	1	0	1
Pedestrian Error	1	0	0	1
Vehicle Skidded Before Brake	0	0	1	1
Driverless Moving Vehicle	0	0	0	0
High Speed Pursuit	0	0	0	0
Texting	0	0	0	0
Vehicle	0	1	1	2
Defective Steering	0	1	0	1
Inadequate Brakes	0	0	1	1
Defective Tires	0	0	0	0
Other Mechanical Defect	0	0	0	0
Environment	0	0	4	4
Road Defect	0	0	4	4
Low Visibility Due to Smoke	0	0	0	0
Traffic Control Not Functioning	0	0	0	0
Other	3	120	223	346
None	2	102	169	273
Other - No Driver Error	1	18	54	73

¹ Multiple contributing factors may be reported for any vehicle in a crash.

Table 16: People in Crashes by Crash Classification and Severity of Injuries in Taos County, 2016

Crash Classification	People in Crashes by Severity of Injuries					Total People
	Fatalities (Class K)	Suspected Serious Injuries (Class A)	Suspected Minor Injuries (Class B)	Possible Injuries (Class C)	No Apparent Injuries (Class O)	
Animal	0	0	0	1	30	31
Fixed Object	2	0	5	6	42	55
Other (Non-Collision)	0	0	0	0	3	3
Other (Object)	0	0	0	0	5	5
Other Vehicle	2	2	26	114	719	863
Overturn/Rollover	1	0	4	2	12	19
Parked Vehicle	0	0	0	0	12	12
Pedalcyclist	0	0	2	2	6	10
Pedestrian	1	0	2	3	7	13
Railroad Train	0	0	0	0	0	0
Rollover	2	0	3	0	2	7
Vehicle on Other Road	0	0	0	0	4	4
Missing Data	0	0	0	0	7	7
Total People	8	2	42	128	849	1,029

Table 17: Killed or Injured Unbelted People in Crashes by Sex and Age Group in Taos County, 2016

Age Groups	Unbelted People Killed or Injured ^{1,2}				Total People
	Male	Percent of Male	Female	Percent of Female	
0-4	0	0%	0	0%	0
5-9	0	0%	0	0%	0
10-14	0	0%	0	0%	0
15-19	1	25%	4	80%	5
20-24	0	0%	0	0%	0
25-29	0	0%	0	0%	0
30-34	0	0%	0	0%	0
35-39	1	25%	0	0%	1
40-44	0	0%	0	0%	0
45-49	1	25%	1	20%	2
50-54	0	0%	0	0%	0
55-59	0	0%	0	0%	0
60-64	1	25%	0	0%	1
65-69	0	0%	0	0%	0
70 +	0	0%	0	0%	0
Missing Data	0	0%	0	0%	0
Total People	4	100%	5	100%	9

¹ People injured are in one of three categories: suspected serious injury, suspected minor injury, or possible injury.

² Excludes people in or on buses, heavy trucks, motorcycles, or ATVs.

Figure 8: Seatbelt Use by People in Crashes with Fatal or Suspected Serious Injuries in Taos County, 2012-2016

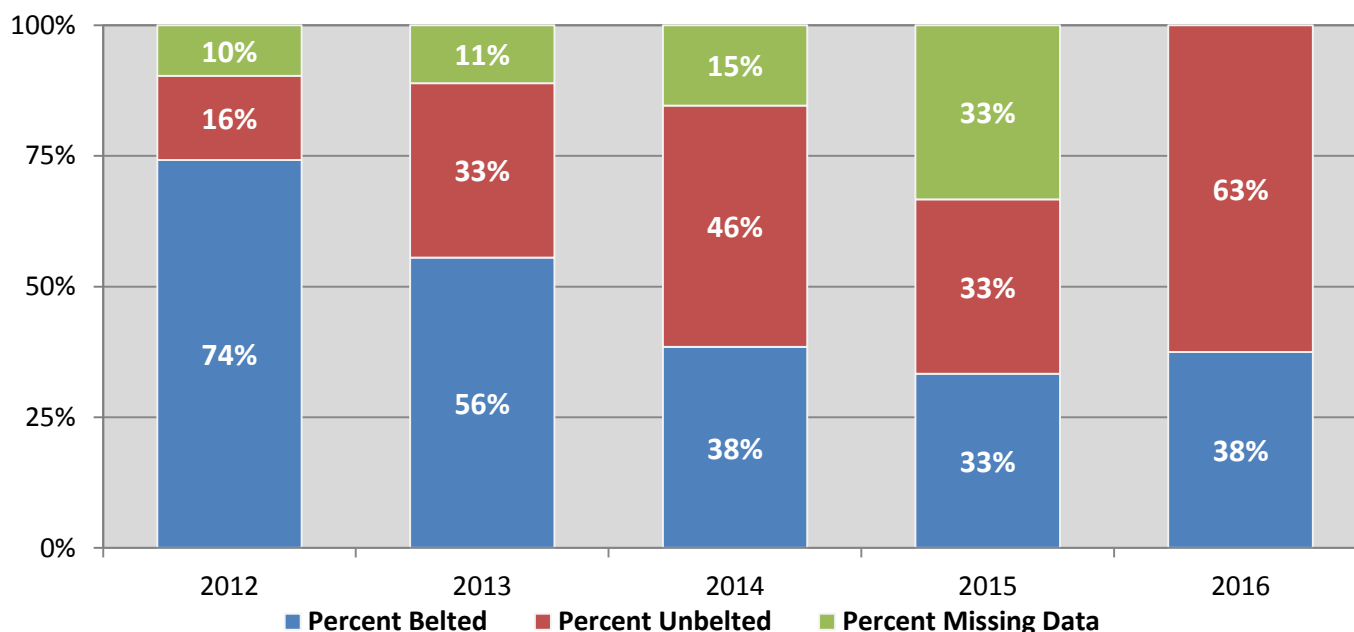
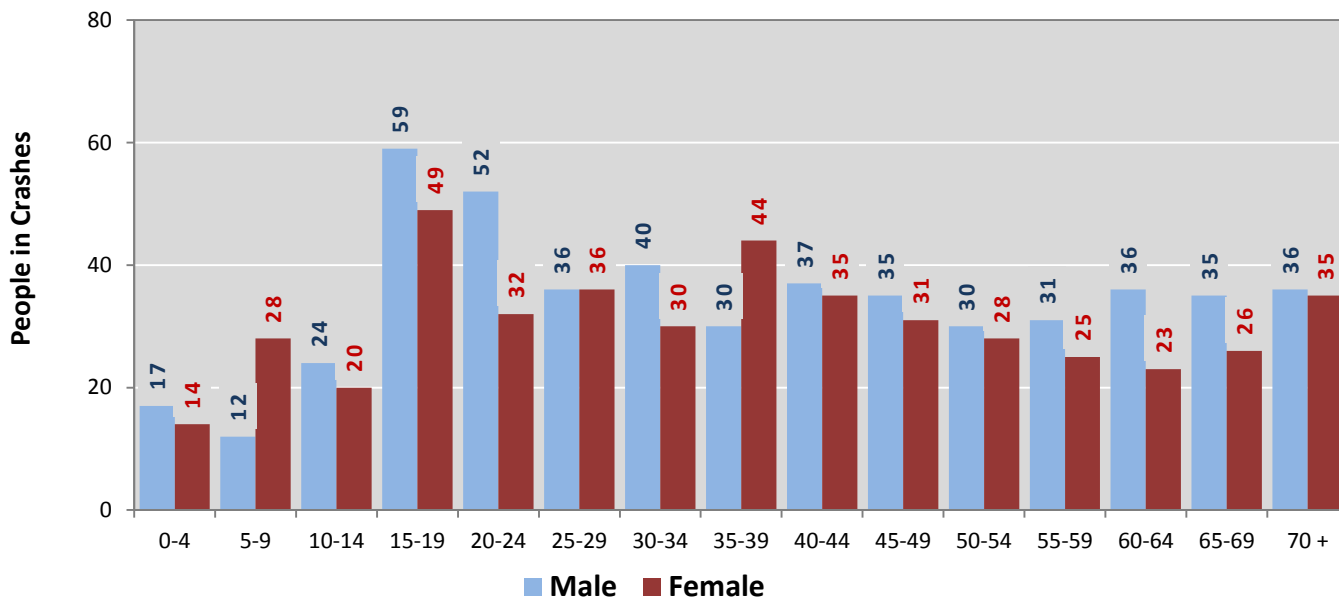
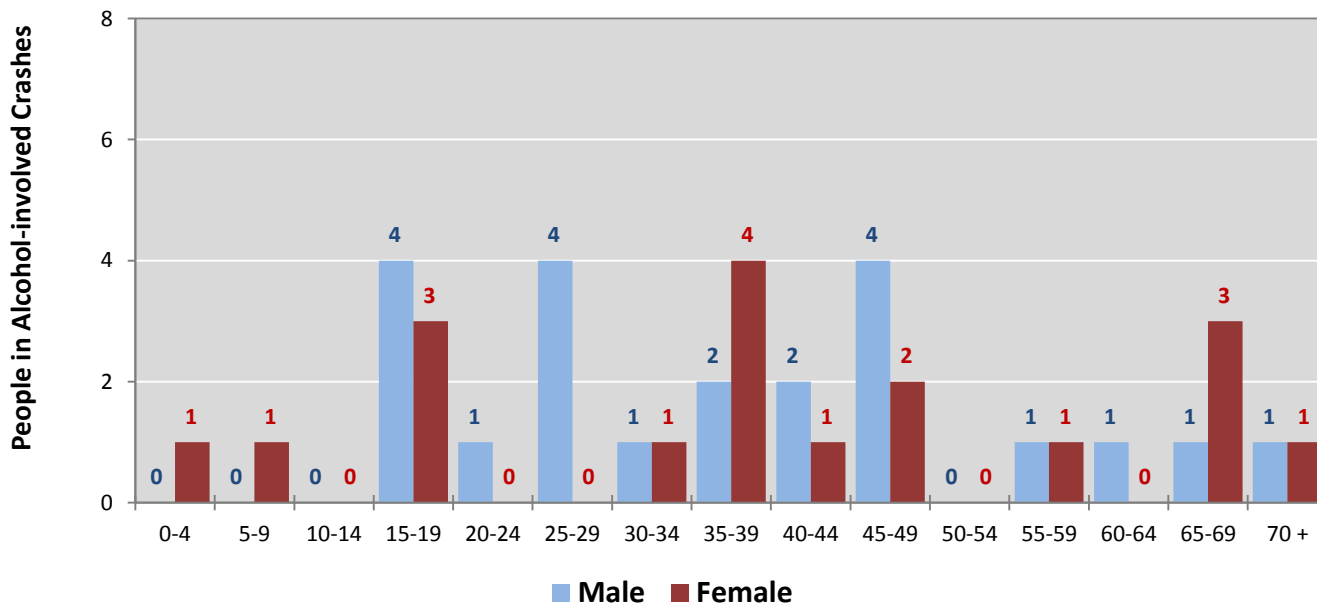


Figure 9: People in Crashes by Age Group and Sex in Taos County, 2016



* In 2016, Taos County had 63 people in crashes for which age or sex data were missing.

Figure 10: People in Alcohol-involved Crashes by Age Group and Sex in Taos County, 2016



* In 2016, Taos County had 1 people in alcohol-involved crashes for which age or sex data were missing.

Table 18: Pedestrians and Pedalcyclists in Crashes by Age Group in Taos County, 2012-2016

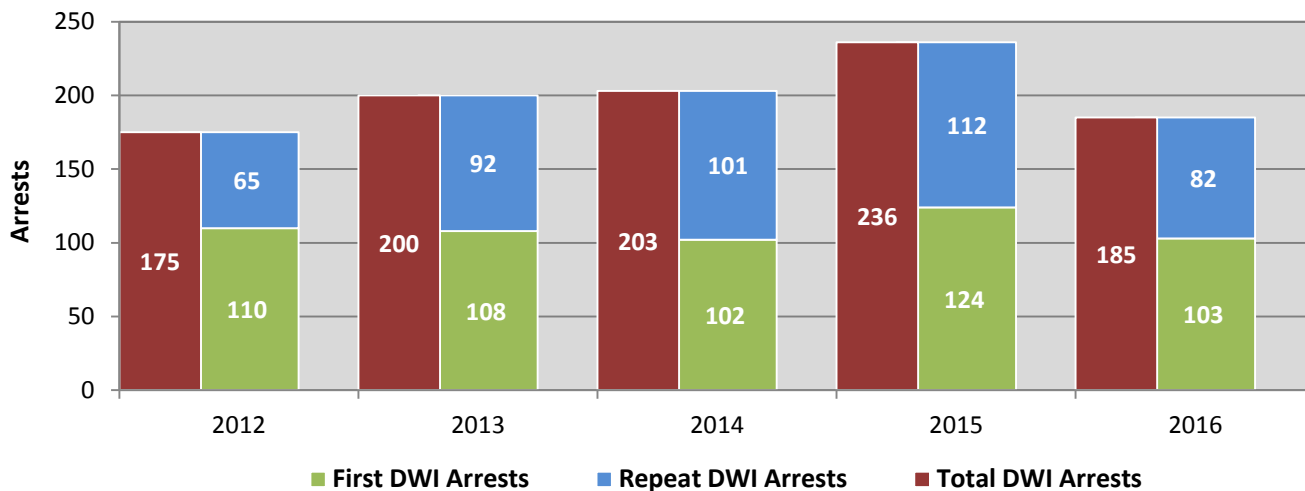
Age Groups	Pedestrians and Pedalcyclists ¹ in Crashes					5-Year Total People
	2012	2013	2014	2015	2016	
0-4	0	1	0	0	0	1
5-9	0	0	0	0	0	0
10-14	1	0	1	1	0	3
15-19	1	0	0	2	0	3
20-24	0	0	2	0	0	2
25-29	1	0	0	1	1	3
30-34	0	0	0	2	3	5
35-39	0	0	0	0	0	0
40-44	0	0	1	1	1	3
45-49	0	1	0	1	1	3
50-54	1	1	0	0	0	2
55-59	1	0	0	1	1	3
60-64	0	0	0	0	0	0
65-69	0	0	0	2	0	2
70 +	0	1	2	0	2	5
Missing Data	0	3	2	2	2	9
Total People	5	7	8	13	11	44

Table 19: Pedestrians and Pedalcyclists in Crashes by Alcohol Involvement and Severity of Injuries in Taos County, 2016

Alcohol Involvement	Pedestrians and Pedalcyclists ¹ in Crashes					Total People
	Fatalities (Class K)	Suspected Serious Injuries (Class A)	Suspected Minor Injuries (Class B)	Possible Injuries (Class C)	No Apparent Injury (Class O)	
Total Pedalcyclists	0	0	2	2	1	5
Involved	0	0	0	0	0	0
Not Involved	0	0	2	2	1	5
Total Pedestrians	1	0	1	3	1	6
Involved	1	0	1	0	0	2
Not Involved	0	0	0	3	1	4
Total People	1	0	3	5	2	11

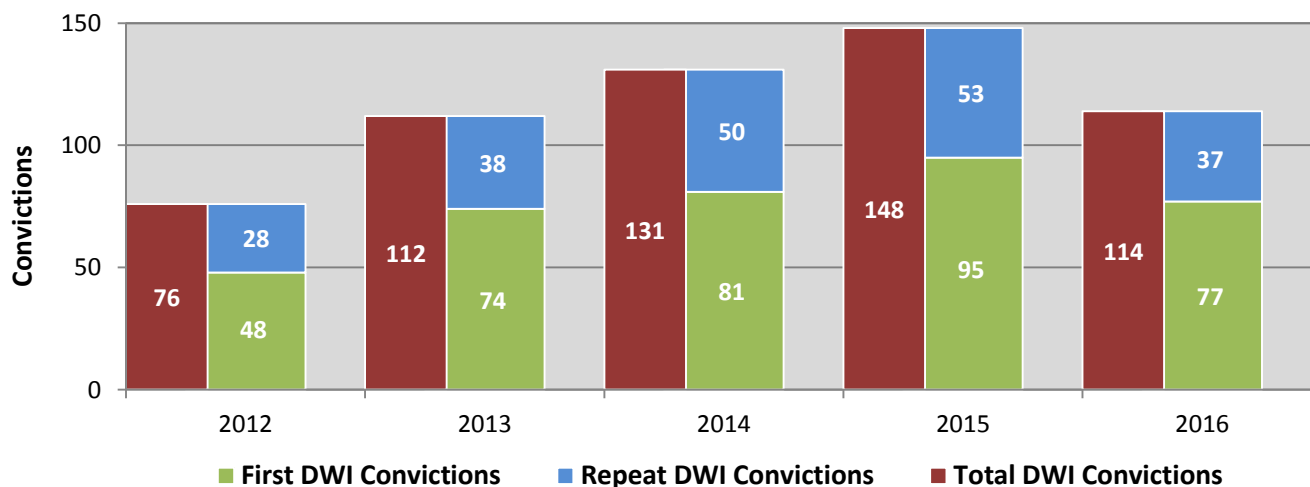
¹ Pedestrians and pedalcyclists are counted as non-motorized vehicles, when involved in a crash with a motor vehicle.

**Figure 11: DWI Arrests in Taos County,
Showing First and Repeat DWI Arrests, 2012-2016**



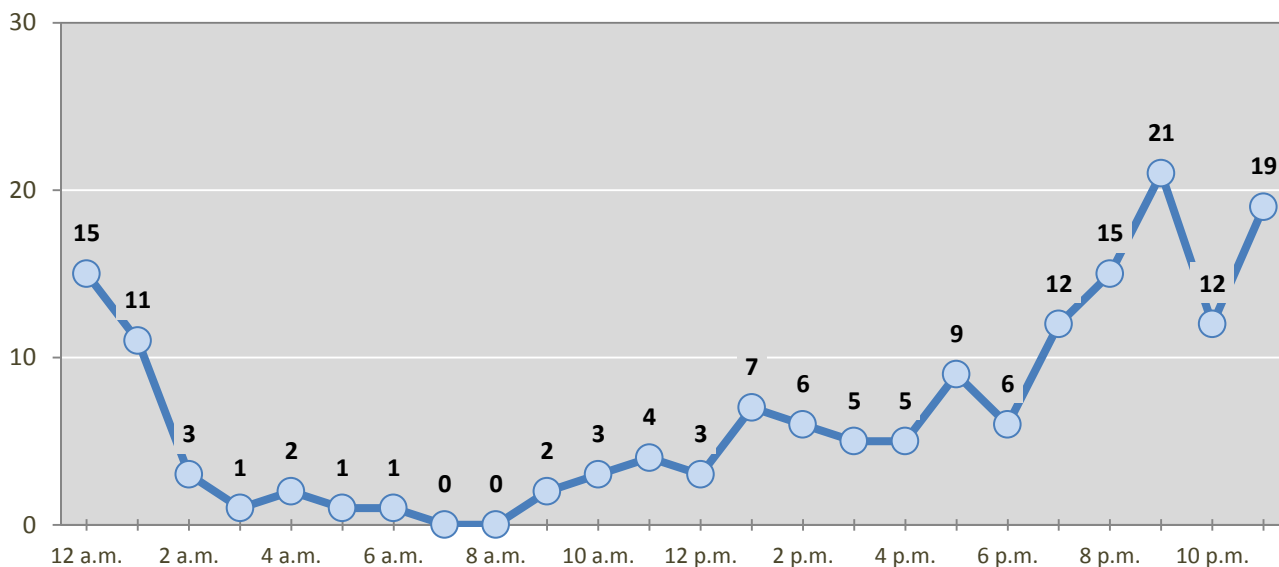
*Values are based upon the year of the arrest.

**Figure 12: DWI Convictions in Taos County,
Showing First and Repeat DWI Convictions, 2012-2016**



*Values are based upon the year of the conviction.

Figure 13: DWI Arrests by Hour in Taos County, 2016



* In 2016, Taos County had 22 arrests for which hour data were missing.

Table 20: DWI Arrests by Day of Week in Taos County, 2012-2016

Day of Week	Year					5-Year Average
	2012	2013	2014	2015	2016	
Sunday	35	33	27	40	30	33
Monday	17	18	24	19	23	20
Tuesday	15	14	19	22	18	18
Wednesday	22	17	24	25	23	22
Thursday	20	32	22	26	17	23
Friday	29	35	33	43	39	36
Saturday	37	51	54	61	35	48
Total Arrests	175	200	203	236	185	200

Table 21: Driver First DWI Arrests by Age Group in Taos County, 2012-2016

Age Groups	Driver First DWI Arrests ¹				
	2012	2013	2014	2015	2016
15-19	11	5	7	5	3
20-24	22	19	14	24	13
25-29	15	23	23	19	20
30-34	7	15	15	13	18
35-39	12	15	10	8	12
40-44	10	8	12	14	10
45-49	11	4	2	8	4
50-54	7	7	6	9	5
55-59	7	7	7	10	6
60-64	5	2	3	6	8
65-69	2	1	2	2	1
70 +	0	1	0	0	0
Missing Data	1	1	1	6	3
Total Drivers	110	108	102	124	103

¹ Values are based upon the year of the arrest.

Table 22: Driver Repeat DWI Arrests by Age Group in Taos County, 2012-2016

Age Groups	Driver Repeat DWI Arrests ¹				
	2012	2013	2014	2015	2016
15-19	1	1	1	0	0
20-24	5	7	8	8	2
25-29	7	12	13	16	3
30-34	8	12	14	16	12
35-39	9	13	9	16	12
40-44	14	10	12	16	15
45-49	8	11	18	14	12
50-54	6	9	8	9	9
55-59	2	10	7	10	8
60-64	4	4	6	2	4
65-69	1	1	3	2	4
70 +	0	2	1	2	1
Missing Data	0	0	1	1	0
Total Drivers	65	92	101	112	82

¹ Values are based upon the year of the arrest.

Table 23: Driver First DWI Convictions by Age Group in Taos County, 2012-2016

Age Groups	Driver First DWI Convictions ¹				
	2012	2013	2014	2015	2016
15-19	0	3	2	3	1
20-24	10	18	6	21	10
25-29	6	9	19	17	22
30-34	4	7	11	13	6
35-39	7	11	13	5	8
40-44	3	5	6	14	6
45-49	6	11	5	5	3
50-54	3	6	5	5	7
55-59	5	3	7	6	6
60-64	1	0	4	5	3
65-69	2	0	1	0	3
70 +	0	1	0	0	1
Missing Data	1	0	2	1	1
Total Drivers	48	74	81	95	77

¹ Values are based upon the year of the conviction.

Table 24: Driver Repeat DWI Convictions by Age Group in Taos County, 2012-2016

Age Groups	Driver Repeat DWI Convictions ¹				
	2012	2013	2014	2015	2016
15-19	0	0	0	0	0
20-24	1	2	3	3	2
25-29	2	3	8	5	3
30-34	6	5	8	7	1
35-39	2	3	3	8	6
40-44	7	8	8	6	8
45-49	7	3	6	9	8
50-54	1	7	7	1	4
55-59	1	4	4	7	4
60-64	0	1	0	4	0
65-69	1	1	2	1	1
70 +	0	1	1	1	0
Missing Data	0	0	0	1	0
Total Drivers	28	38	50	53	37

¹ Values are based upon the year of the conviction.

Table 25: Court Disposition of DWI Arrests for Taos County and the State, 2016

Court Disposition of DWI Arrest ¹	Taos County	Statewide	Percent of Statewide
Total DWI Arrests	185	10,344	1.8%
DWI Arrests Resulting in Convictions	88	5,541	1.6%
DWI Arrests Resulting in Dismissals ²	14	1,512	0.9%
DWI Arrests Awaiting Disposition	83	3,291	2.5%

¹ These are the number of DWI arrests in 2016 and whether the case resulted in a conviction or dismissal, or is still awaiting court disposition, as reported in the NM MVD Citation Tracking System (CTS) as of December 2017.

² For this table, a very small number of "not guilty" rulings may be included in the category Dismissals.

Table 26: Average Number of Days from Date of DWI Arrest to Date of Court Disposition in Taos County and the State, 2016

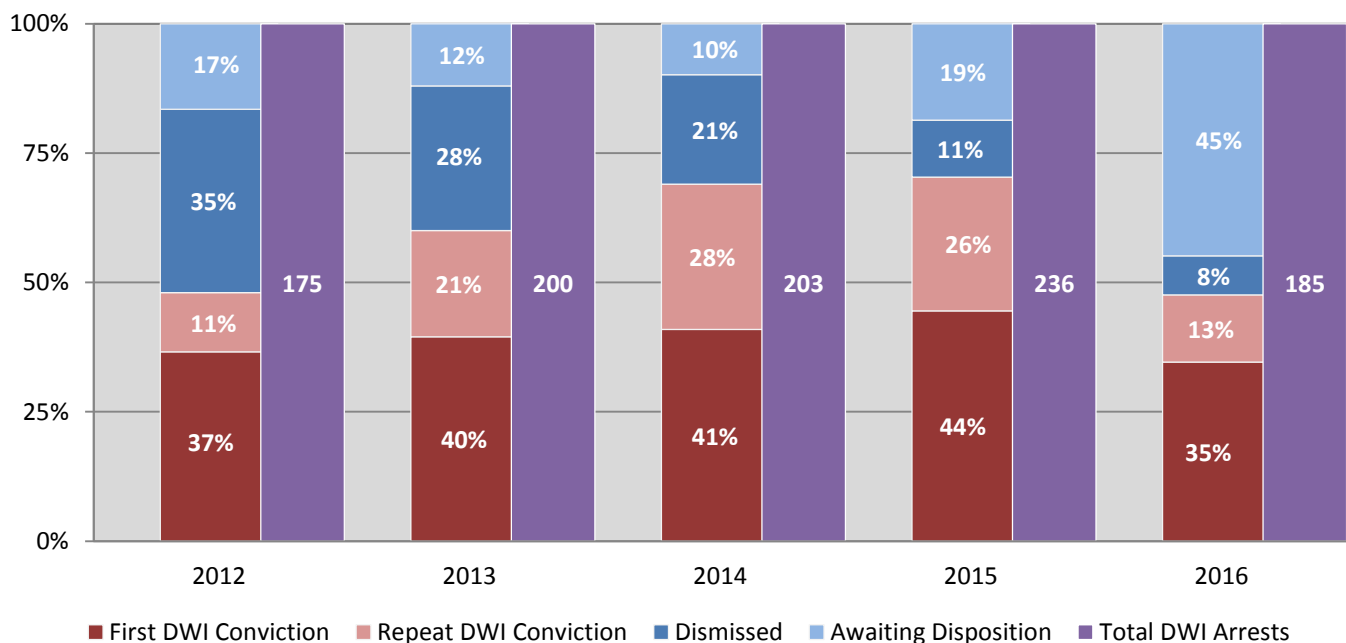
Court Disposition	Average Number of Days		Deviation from Statewide Average
	Taos County	Statewide	
DWI Conviction	196	157	39
DWI Dismissal	105	179	-74

Table 27: Court Disposition of DWI Arrests in Taos County, 2012-2016

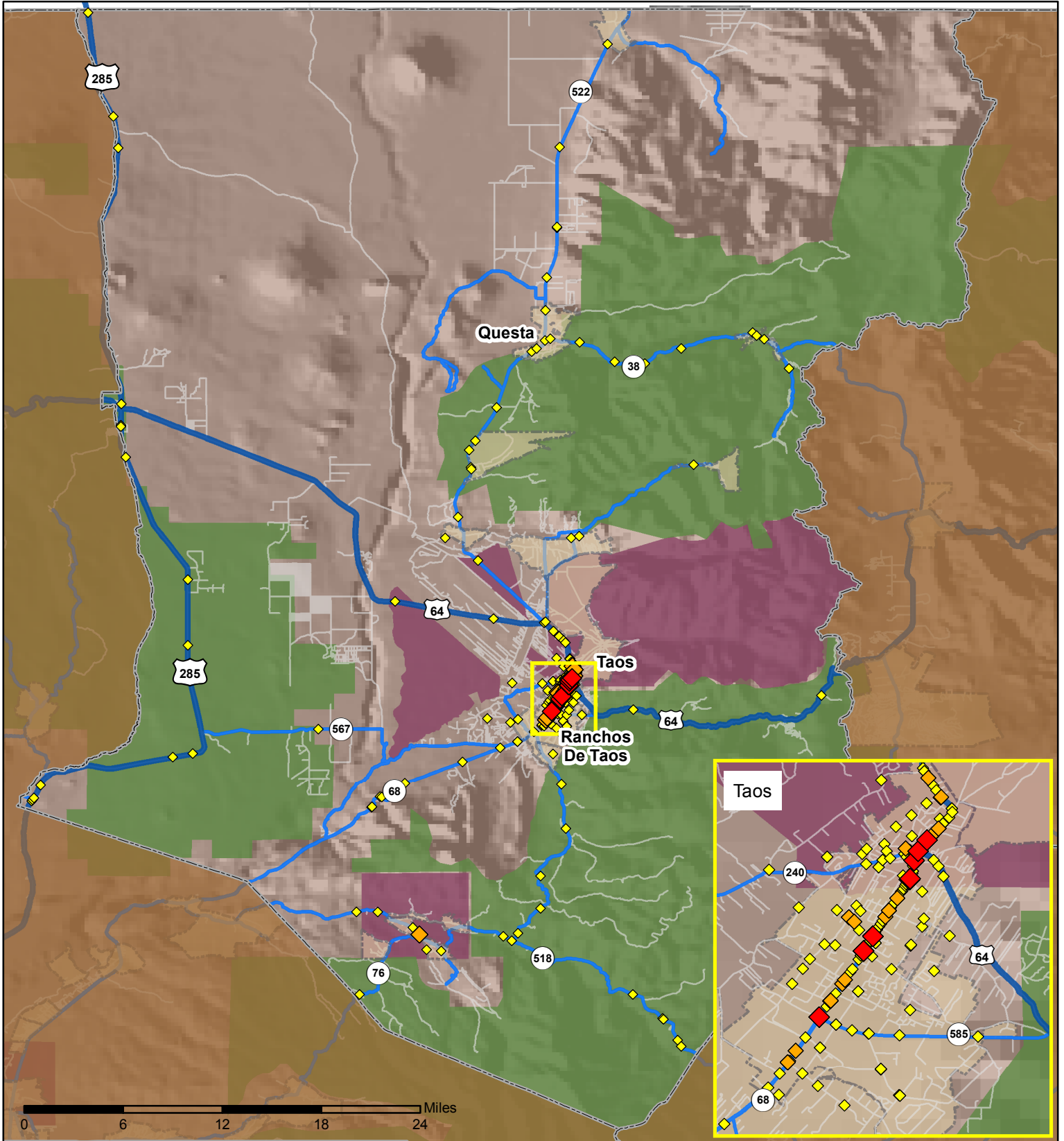
Year of DWI Arrest ¹	Court Disposition				Total DWI Arrests
	First DWI Conviction	Repeat DWI Conviction	Dismissed	Awaiting Disposition	
2012	64	20	62	29	175
2013	79	41	56	24	200
2014	83	57	43	20	203
2015	105	61	26	44	236
2016	64	24	14	83	185

¹ Values are based upon the year of the arrest.

Figure 14: Court Dispositions by Percentage of DWI Arrests in Taos County, 2012-2016



*Table 27 contains the values used to calculate percentages shown in Figure 14.



Legend

- | | |
|-------------------------|---------------------|
| Forest & Wildlife Areas | Interstate Highways |
| Reservations & Pueblos | U.S. Highways |
| County Boundaries | State Highways |
| City Boundaries | Streets & Roadways |

Crashes 2016

- 1 - 2 Crashes
- 3 - 5 Crashes
- 6 - 15 Crashes

